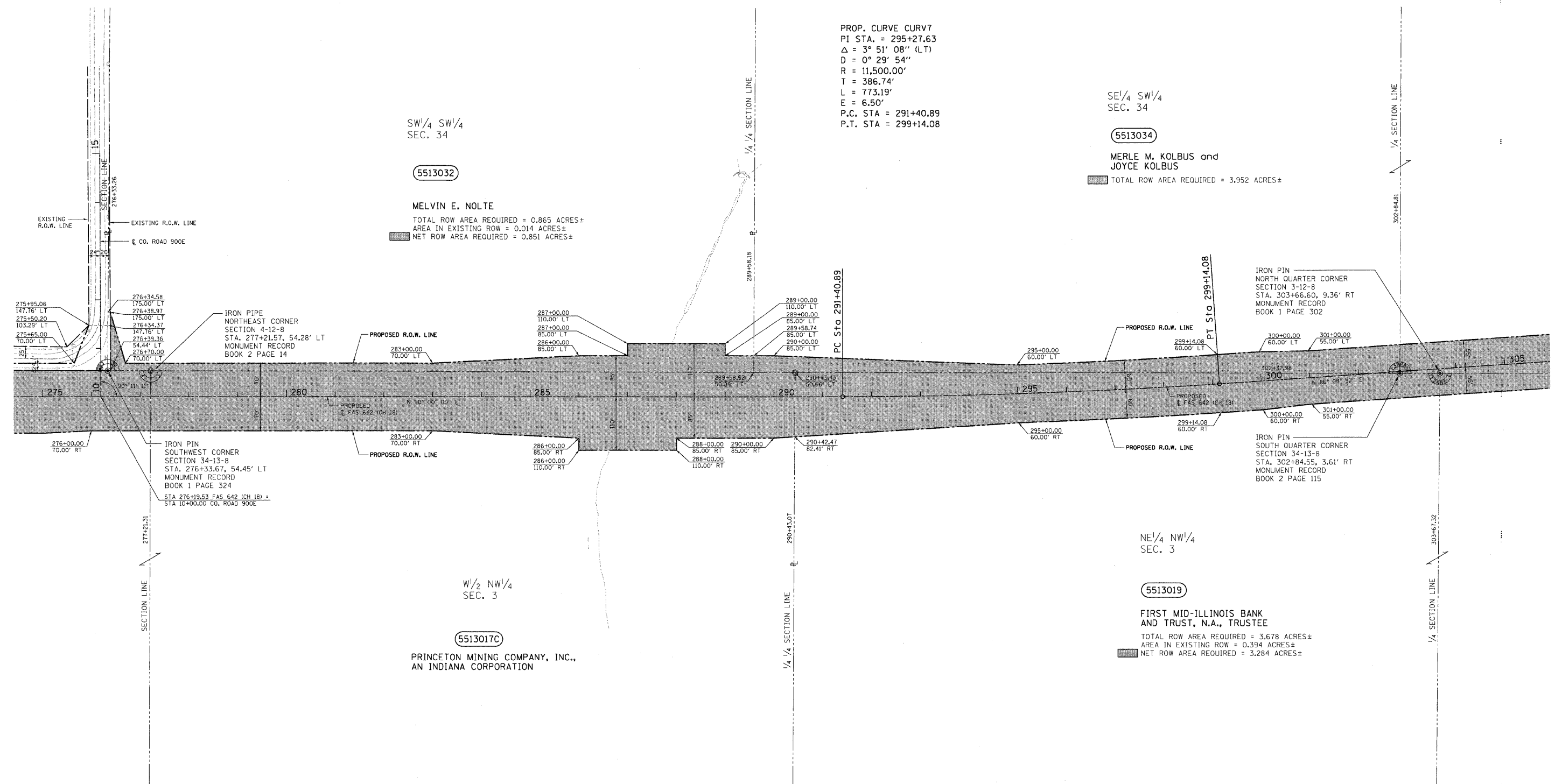


T.13N.-R.8E., 3rd P.M., HUMBOLDT TWP.



03A2009



PROP. CURVE CURV7
 PI STA. = 295+27.63
 Δ = 3° 51' 08" (LT)
 D = 0° 29' 54"
 R = 11,500.00'
 T = 386.74'
 L = 773.19'
 E = 6.50'
 P.C. STA = 291+40.89
 P.T. STA = 299+14.08

SW 1/4 SW 1/4
 SEC. 34
 (5513032)
 MELVIN E. NOLTE
 TOTAL ROW AREA REQUIRED = 0.865 ACRES±
 AREA IN EXISTING ROW = 0.014 ACRES±
 NET ROW AREA REQUIRED = 0.851 ACRES±

SE 1/4 SW 1/4
 SEC. 34
 (5513034)
 MERLE M. KOLBUS and
 JOYCE KOLBUS
 TOTAL ROW AREA REQUIRED = 3.952 ACRES±

IRON PIN
 SOUTHWEST CORNER
 SECTION 34-13-8
 STA. 276+33.67, 54.45' LT
 MONUMENT RECORD
 BOOK 1 PAGE 324
 STA 276+19.53 FAS 642 (CH 18) =
 STA 10+00.00 CO. ROAD 900E

IRON PIN
 NORTH QUARTER CORNER
 SECTION 3-12-8
 STA. 303+66.60, 9.36' RT
 MONUMENT RECORD
 BOOK 1 PAGE 302

IRON PIN
 SOUTH QUARTER CORNER
 SECTION 34-13-8
 STA. 302+84.55, 3.61' RT
 MONUMENT RECORD
 BOOK 2 PAGE 115

NE 1/4 NW 1/4
 SEC. 3
 (5513019)
 FIRST MID-ILLINOIS BANK
 AND TRUST, N.A., TRUSTEE
 TOTAL ROW AREA REQUIRED = 3.678 ACRES±
 AREA IN EXISTING ROW = 0.394 ACRES±
 NET ROW AREA REQUIRED = 3.284 ACRES±

W 1/2 NW 1/4
 SEC. 3
 (5513017C)
 PRINCETON MINING COMPANY, INC.,
 AN INDIANA CORPORATION

LEGEND
 ● - IRON PIN
 ○ - IRON PIPE

STATION	OFFSET	LABEL
276+18.10	-57.89	PIN
276+33.67	-54.45	PIN
277+21.57	-54.28	PIPE
290+43.43	-50.41	PIPE
302+84.55	3.61	PIN
303+66.60	9.36	PIN

NOTES:
 1. TEMPORARY EASEMENTS ARE REQUIRED FOR ENTRANCE CONSTRUCTION AND EARTHWORK.
 2. ALL BEARINGS ARE REFERENCED TO THE ILLINOIS STATE PLANE COORDINATE SYSTEM EAST ZONE DATUM OF 1983.

T.12N.-R.8E., 3rd P.M., LAFAYETTE TWP.

REVISION		COUNTY OF COLES RIGHT OF WAY PLAN
DATE	DESCRIPTION	
		ROUTE F.A.S. 642 (CH 18)
		SECTION 99-00124-03-PV
		COUNTY COLES
		JOB# R-95-051-03
		SEC 3-12-8 & 34-13-8
		STA 275+00 TO STA 305+00
		DRAWN S.A.E. CHECKED D.E.H.
		SCALE: 1" = 100' SHEET NO. 94 OF 97