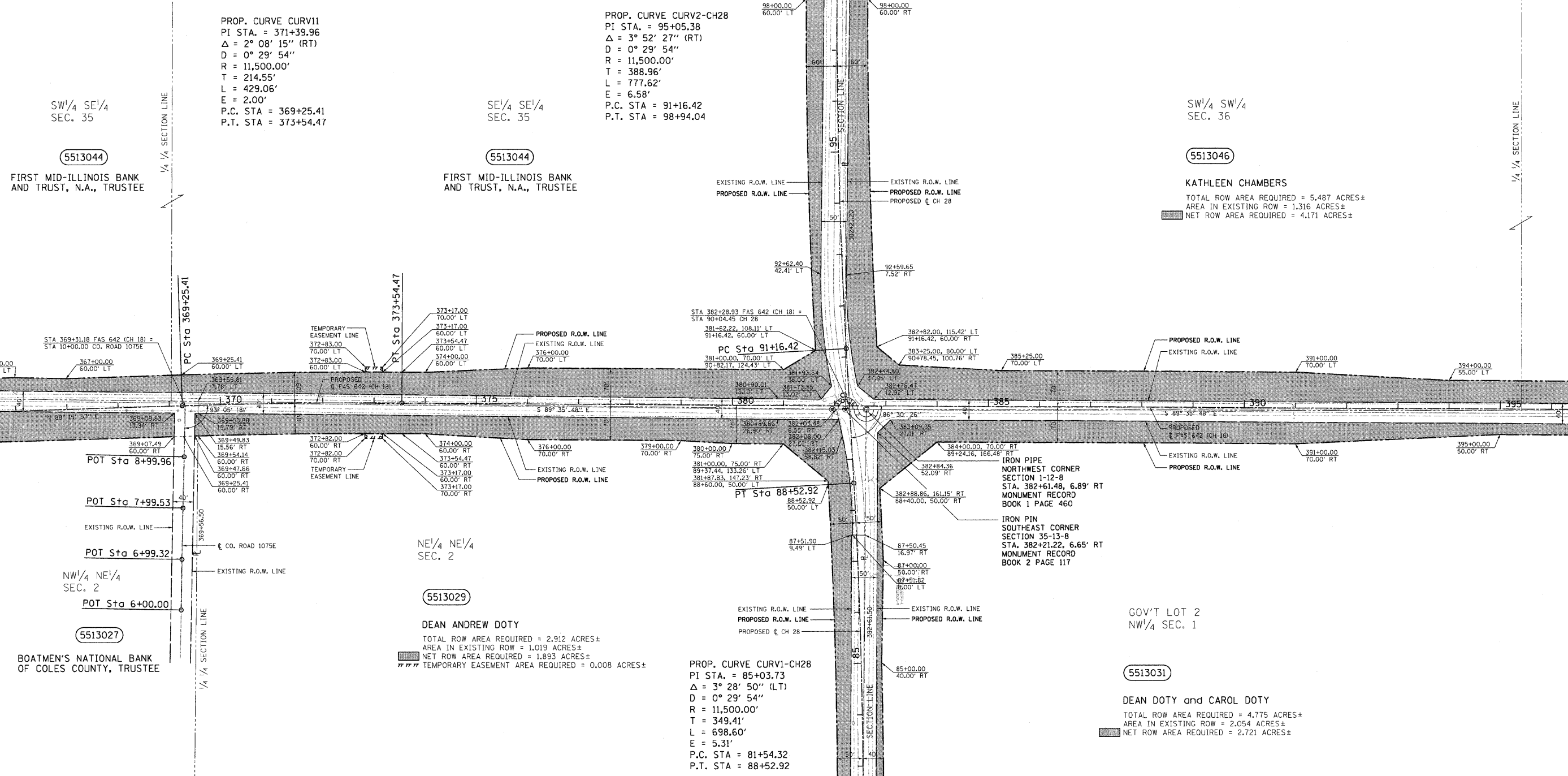


T.13N.-R.8E., 3rd P.M., HUMBOLDT TWP.



PROP. CURVE CURV1
 PI STA. = 371+39.96
 $\Delta = 2^\circ 08' 15''$ (RT)
 $D = 0^\circ 29' 54''$
 $R = 11,500.00'$
 $T = 214.55'$
 $L = 429.06'$
 $E = 2.00'$
 P.C. STA = 369+25.41
 P.T. STA = 373+54.47

PROP. CURVE CURV2-CH28
 PI STA. = 95+05.38
 $\Delta = 3^\circ 52' 27''$ (RT)
 $D = 0^\circ 29' 54''$
 $R = 11,500.00'$
 $T = 388.96'$
 $L = 777.62'$
 $E = 6.58'$
 P.C. STA = 91+16.42
 P.T. STA = 98+94.04

SW 1/4 SW 1/4
 SEC. 36

SW 1/4 SE 1/4
 SEC. 35

SE 1/4 SE 1/4
 SEC. 35

5513044
 FIRST MID-ILLINOIS BANK
 AND TRUST, N.A., TRUSTEE

5513044
 FIRST MID-ILLINOIS BANK
 AND TRUST, N.A., TRUSTEE

5513046
 KATHLEEN CHAMBERS
 TOTAL ROW AREA REQUIRED = 5.487 ACRES±
 AREA IN EXISTING ROW = 1.316 ACRES±
 NET ROW AREA REQUIRED = 4.171 ACRES±

NW 1/4 NE 1/4
 SEC. 2

NE 1/4 NE 1/4
 SEC. 2

5513027
 BOATMEN'S NATIONAL BANK
 OF COLES COUNTY, TRUSTEE

5513029
 DEAN ANDREW DOTY
 TOTAL ROW AREA REQUIRED = 2.912 ACRES±
 AREA IN EXISTING ROW = 1.019 ACRES±
 NET ROW AREA REQUIRED = 1.893 ACRES±
 TEMPORARY EASEMENT AREA REQUIRED = 0.008 ACRES±

PROP. CURVE CURV1-CH28
 PI STA. = 85+03.73
 $\Delta = 3^\circ 28' 50''$ (LT)
 $D = 0^\circ 29' 54''$
 $R = 11,500.00'$
 $T = 349.41'$
 $L = 698.60'$
 $E = 5.31'$
 P.C. STA = 81+54.32
 P.T. STA = 88+52.92

GOV'T LOT 2
 NW 1/4 SEC. 1

5513031
 DEAN DOTY and CAROL DOTY
 TOTAL ROW AREA REQUIRED = 4.775 ACRES±
 AREA IN EXISTING ROW = 2.054 ACRES±
 NET ROW AREA REQUIRED = 2.721 ACRES±

LIST OF IRON PINS, PIPES, OR MONUMENTS TO BE PROTECTED

STATION	OFFSET	LABEL
381+95.54	6.96	PIN
382+21.22	6.65	PIN
382+61.48	6.89	PIPE

- LEGEND
- - IRON PIN
 - - IRON PIPE

NOTES:
 1. TEMPORARY EASEMENTS ARE REQUIRED FOR ENTRANCE CONSTRUCTION AND EARTHWORK.
 2. ALL BEARINGS ARE REFERENCED TO THE ILLINOIS STATE PLANE COORDINATE SYSTEM EAST ZONE DATUM OF 1983.

T.12N.-R.8E., 3rd P.M., LAFAYETTE TWP.

REVISION		COUNTY OF COLES RIGHT OF WAY PLAN
DATE	DESCRIPTION	
1-26-05	ROW/AREA P-031	ROUTE F.A.S. 642 (CH 18) SECTION 99-00124-03-PV COUNTY COLES JOB# R-95-051-03 SEC 1-12-8, 2-12-8, 35-13-8 & 36-13-8 STA 366+00 TO STA 396+00 DRAWN S.A.E. CHECKED D.E.H. SCALE: 1" = 100' SHEET NO. 97 OF 97