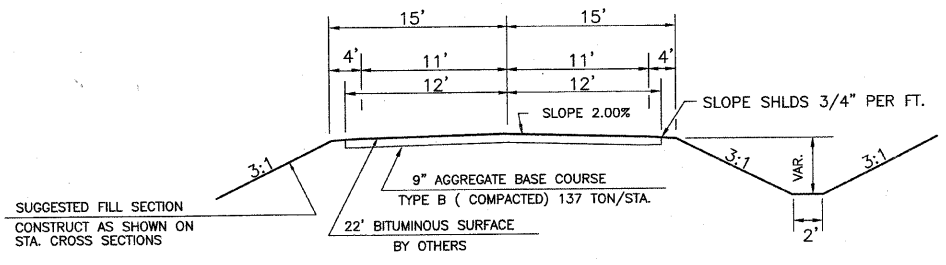
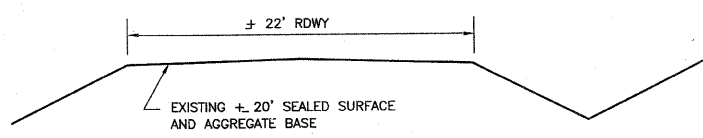


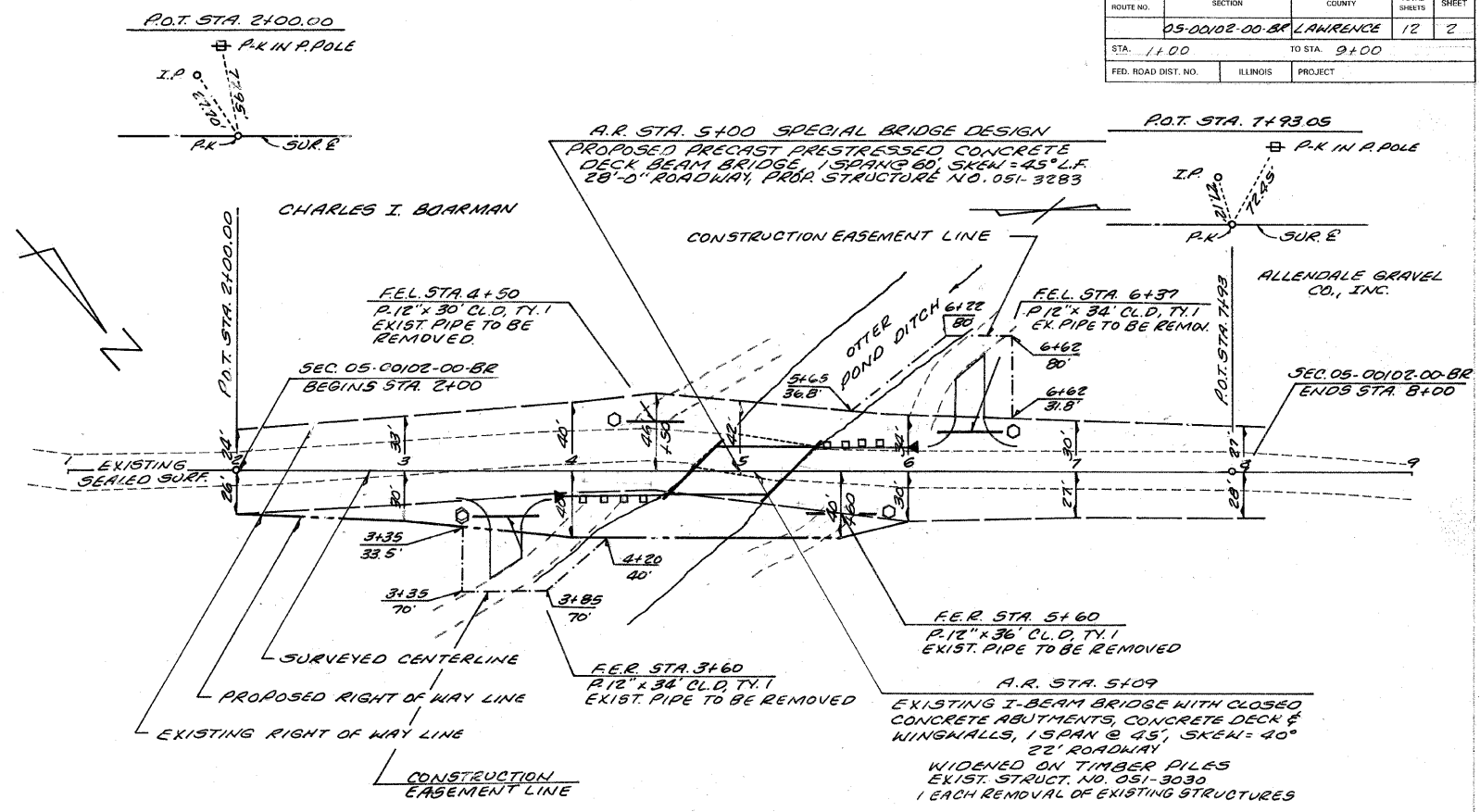
F.A.S. ROUTE NO.	SECTION	COUNTY	TOTAL SHEETS	SHEET
05-00102-00-BR	LAWRENCE		12	2
STA. 1+00	TO STA. 9+00			
FED. ROAD DIST. NO.	ILLINOIS	PROJECT		



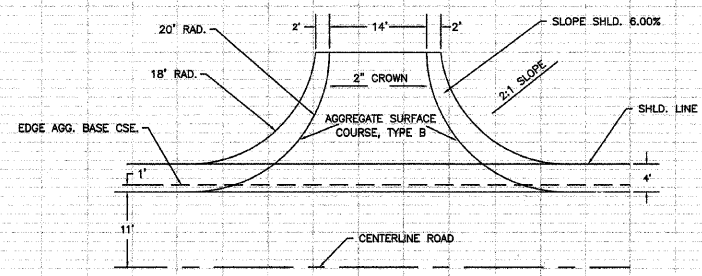
TYPICAL CROSS SECTION OF PROPOSED IMPROVEMENT



TYPICAL CROSS SECTION OF EXISTING ROADWAY



CHARLES I. BOARMAN



DETAIL OF FIELD ENTRANCE

4 @ 10 TON EACH = 40 TONS

UTILITIES
NONE

EARTHWORK SCHEDULE

EMBANKMENT	=	280 CU. YD.
EARTH EXCAVATION	=	1393 CU. YD.
EARTH EXC. ADJ. 25%	=	1045 CU. YD.
CHANNEL EXCAVATION	=	31 CU. YD.
CHANNEL EXC. ADJ. 25%	=	23 CU. YD.
EXCESS EXCAVATION	=	742 CU. YD.

TRAFFIC BARRIER TERMINAL, TYPE 5A
APPROACHING CORNERS = 2 EACH

TRAFFIC BARRIER TERMINAL, TYPE 1, SPECIAL (TANGENT)
APPROACHING CORNERS = 2 EACH

TERMINAL MARKERS - DIRECT APPLIED
APPROACHING CORNERS = 2 EACH

B.M. #1 ELEV. 418.38
P.K. NAIL IN POWER POLE
150' LT. STA. 5+40

CONSTRUCT TRANSITIONS
FROM EXIST. ROWY. TO PROP. 30' ROWY.
STA. 1+50 TO STA. 2+00
STA. 7+50 TO STA. 8+00

EARTHWORK QUANTITIES INCLUDED IN
THOSE LISTED

PERIMETER EROSION BARRIER
20' @ EACH COR. BRIDGE = 80 FEET
(SEE SPEC. PROV.)

SEEDING, CLASS 2 (SPECIAL)
STA. 2+00 TO STA. 8+00 = 0.6 AC.

