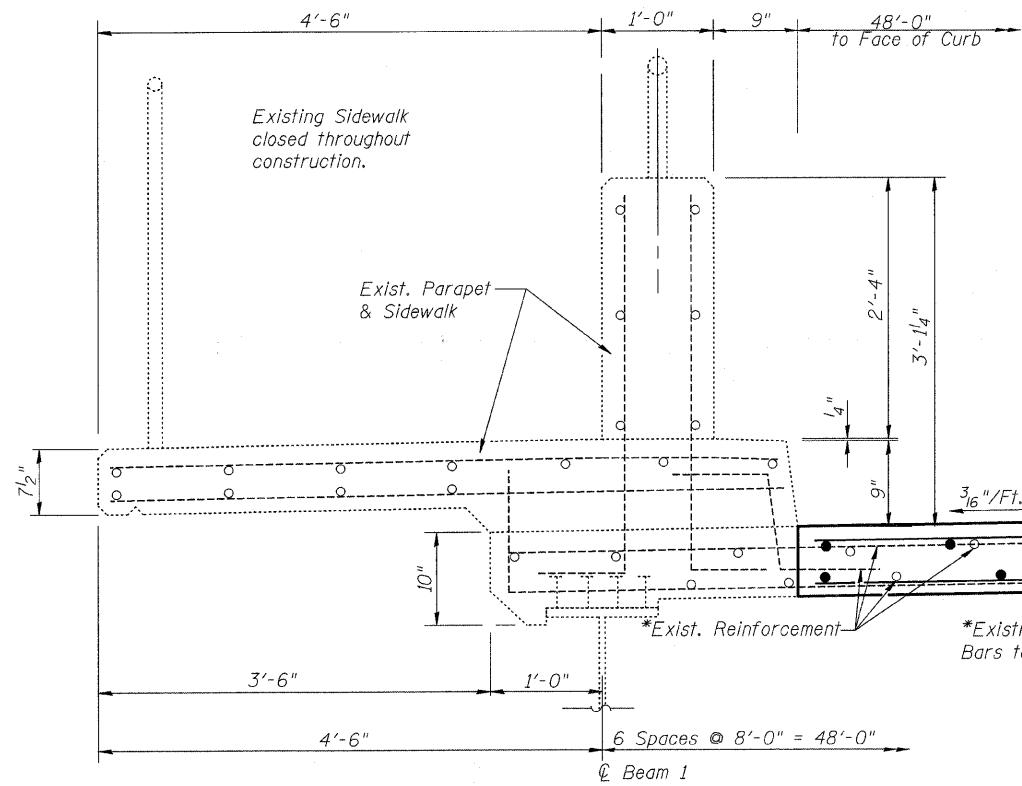
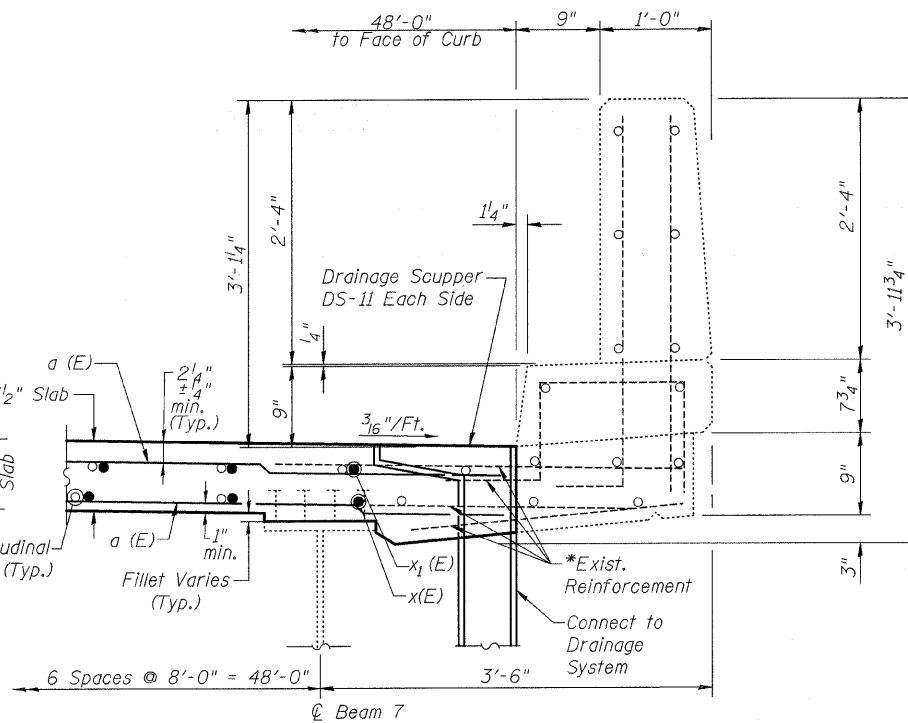


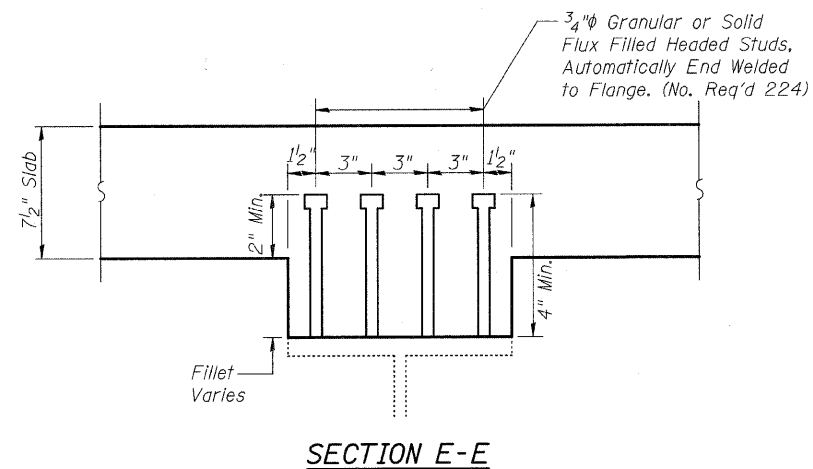
F.A.U. RTE.	SECTION	COUNTY	TOTAL SHEETS	SHEET NO.
7369	08-00503-00-BR	MACON	24	12
STA.		TO STA.		
FED. ROAD DIST. NO.		ILLINOIS	FED. AID PROJECT	



SECTION C-C THRU PARAPET AT BEAM 1
(Looking East)



SECTION D-D THRU PARAPET AT BEAM 7
(Looking East)



SECTION E-E

MIN BAR LAPS

*5 bars - 1'-8"

**SUPERSTRUCTURE
BILL OF MATERIAL**

BAR	NO.	SIZE	LENGTH	SHAPE
a(E)	60	#5	23'-9"	—
a ₁ (E)	16	#5	1'-6"	—
x(E)	100	#5	4'-1"	┘
x ₁ (E)	100	#5	3'-4"	┘
Reinforcement Bars, Epoxy Coated		Pound	2290	
Concrete Superstructure		Cu. Yd.	10.6	
Polymer Concrete		Cu. Ft.	16	
Concrete Removal		Cu. Yd.	39	
Neoprene Expansion Joint 6 1/2"		Foot	96	
Bridge Deck Grooving		Sq. Yd.	27	
Protective Coat		Sq. Yd.	33	
Bar Splicers		Each	30	
Stud Shear Connectors		Each	224	

NOTES

*Existing reinforcement shall be cleaned and incorporated into the new construction. Cost included with Concrete Removal
Work this Sheet With Sheets 5 and 7 of 17.

**DECK JOINT REPAIR DETAILS
GARFIELD AVENUE OVER
CANADIAN NATIONAL RAILROAD
CITY OF DECATUR
MACON COUNTY
STA. 12+59.88
STRUCTURE NUMBER 058-6000**