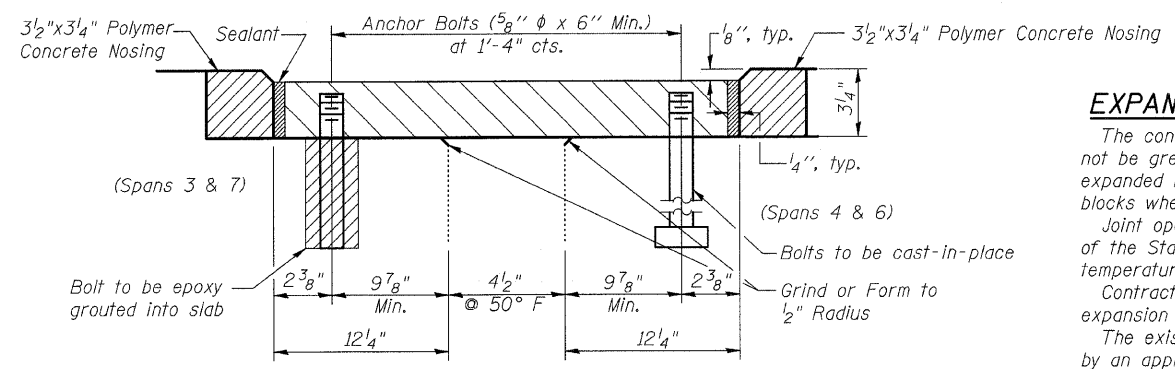


F.A.U. RTE.	SECTION	COUNTY	TOTAL SHEETS	SHEET NO.
7369	08-00503-00-BR	MACON	24	13
STA.		TO STA.		
FED. ROAD DIST. NO.		ILLINOIS FED. AID PROJECT		

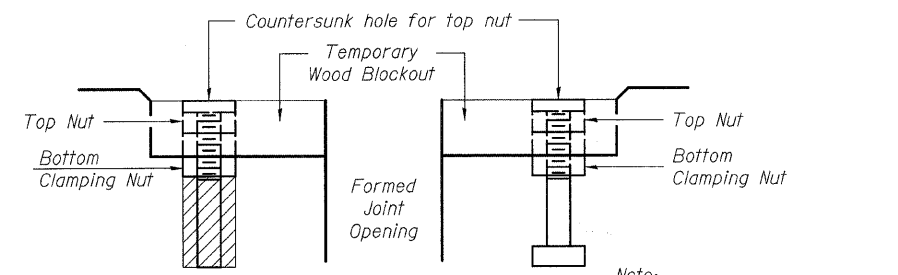
SHEET NO. 7
17 SHEETS



EXPANSION JOINT CROSS SECTION

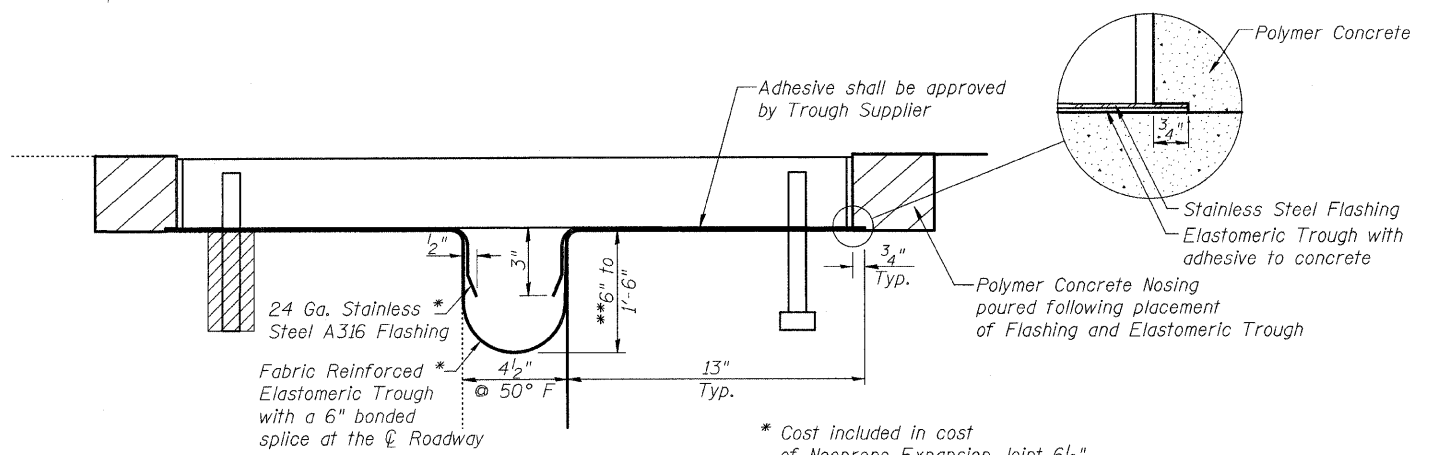
EXPANSION JOINT GENERAL NOTES

The convolution length shall be such that the extended length will not be greater than the manufactured length when the joint is fully expanded in its design range and will not protrude above the anchor blocks when the joint is fully compressed.
 Joint openings shall be adjusted according to Article 503.10(c) of the Standard Specifications when the deck is poured at an ambient temperature other than 50° F.
 Contractor to construct allowance in the form work and blockouts for expansion and contraction in the deck during curing.
 The existing curb and proposed roadway sections shall be made continuous by an approved vulcanizing process. Lapping will not be permitted.
 The approved expansion joint Anchor Bolt spacing shall be offset 4" from the existing anchor bolt pattern.
 See Sheets 3 of 17 for Staging Sections.



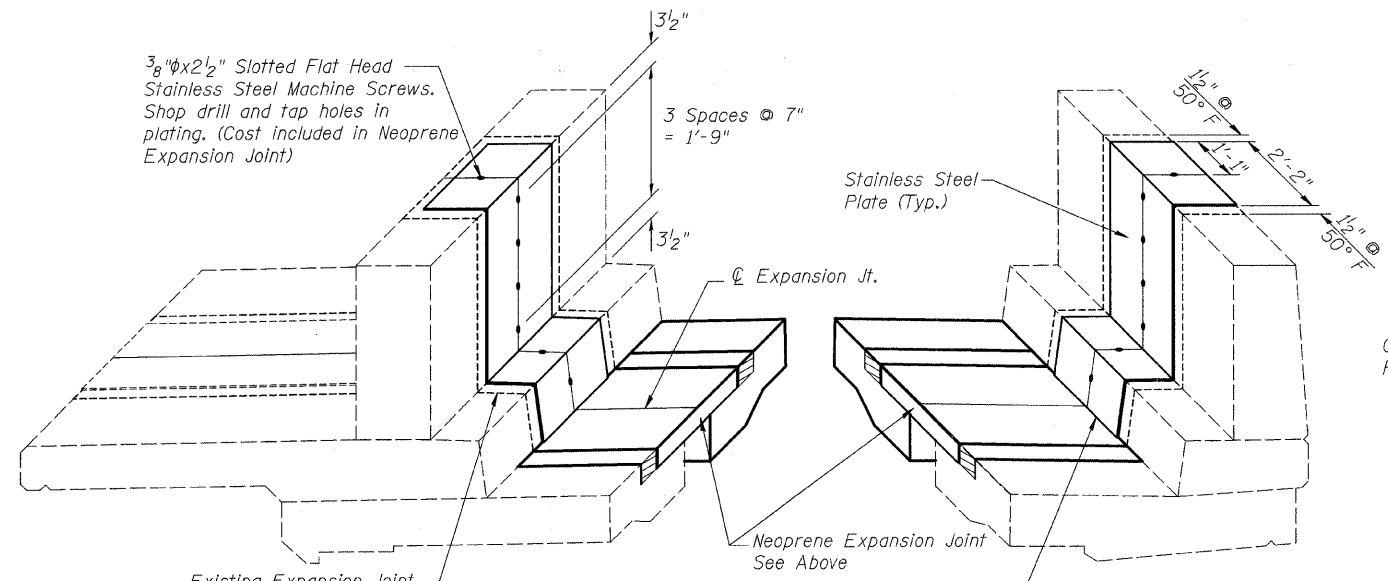
EXPANSION JOINT RECOMMENDED BLOCKOUT DETAIL

NEOPRENE EXPANSION JOINT 6 1/2"



ELASTOMERIC TROUGH DETAIL

* Cost included in cost of Neoprene Expansion Joint 6 1/2"
 ** See Pier Frame Diaphragm on Sheet 9 of 17 for trough slope details.



PARAPET JOINT PLATING

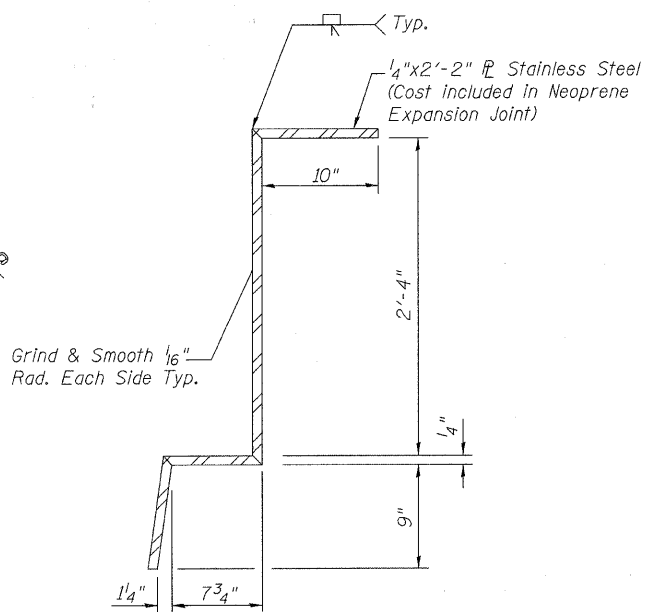


PLATE SECTION AT PARAPETS

PARAPET JOINT PLATING & EXPANSION JOINT
 GARFIELD AVENUE OVER
 CANADIAN NATIONAL RAILROAD
 CITY OF DECATUR
 MACON COUNTY
 STA. 12+59.88
 STRUCTURE NUMBER 058-6000

DATE: FEB. 2009

DRAWN BY: MLO
 CHECKED BY: PBB