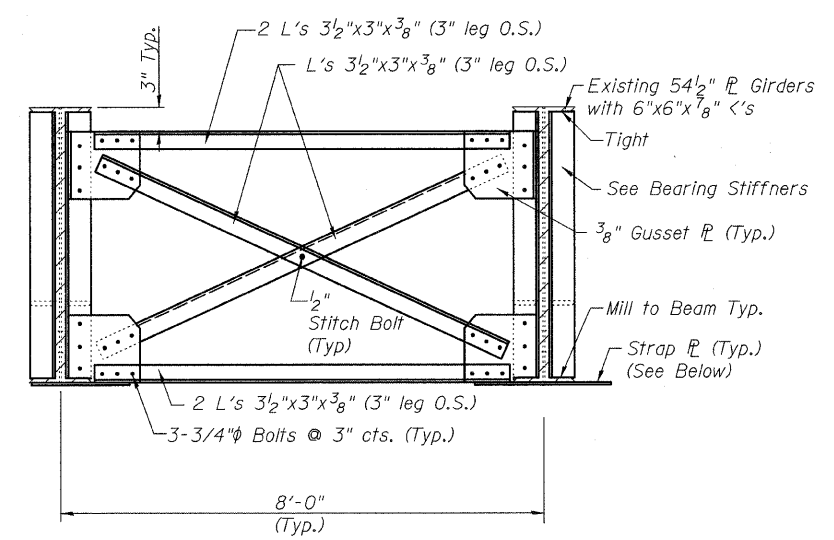
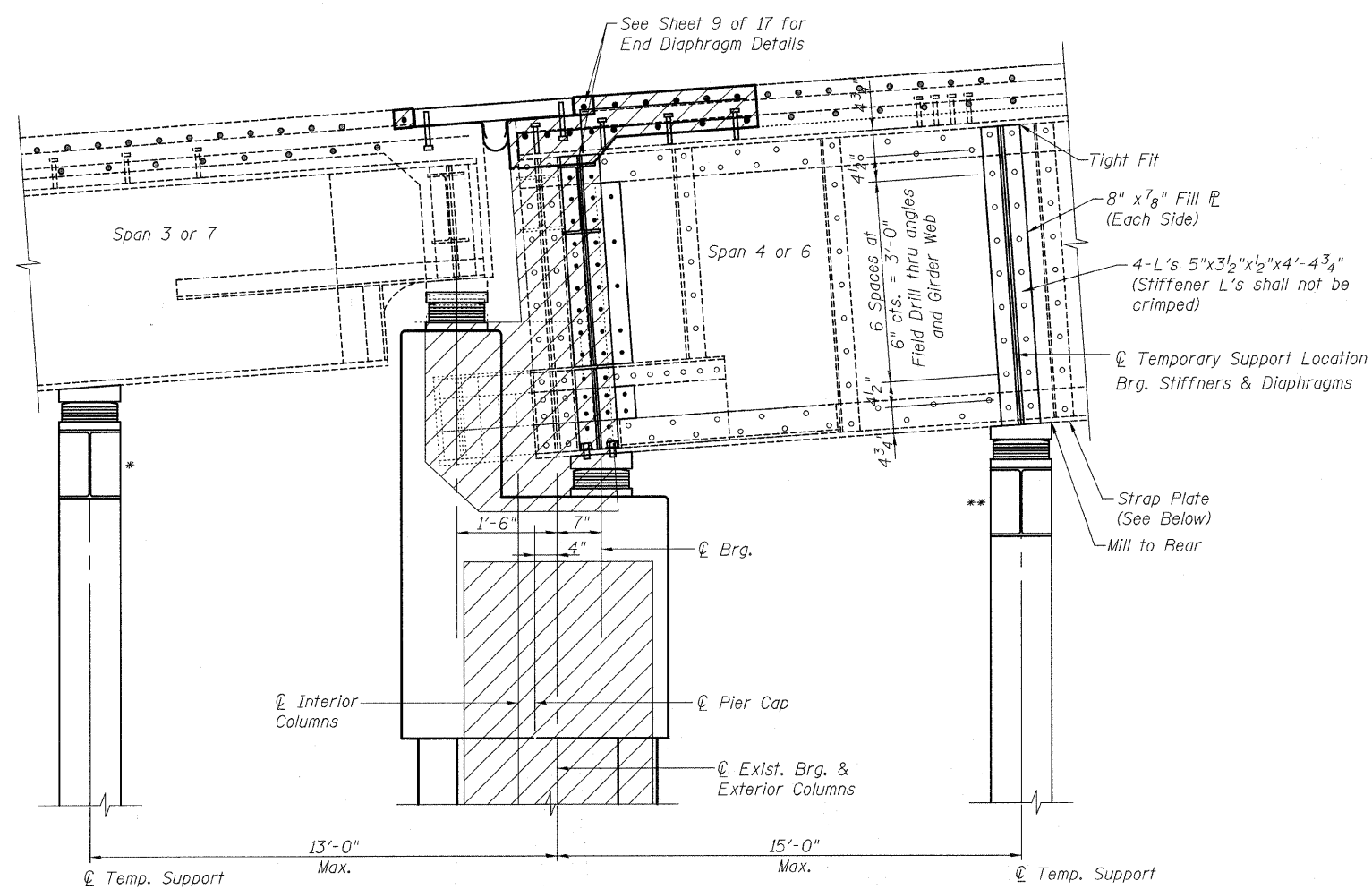


F.A.U. RTE.	SECTION	COUNTY	TOTAL SHEETS	SHEET NO.
7369	08-00503-00-BR	MACON	24	16
STA.		TO STA.		
FED. ROAD DIST. NO.		ILLINOIS	FED. AID PROJECT	

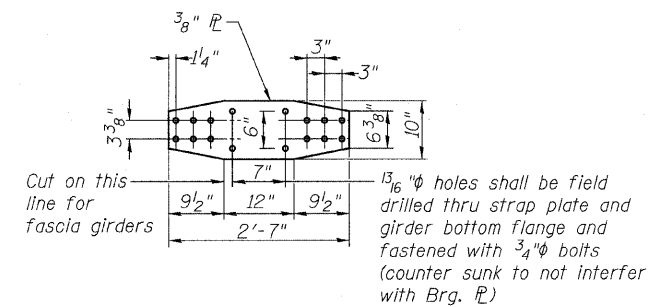
SHEET NO. 10  
17 SHEETS



**DIAPHRAGM AT TEMPORARY SUPPORT LOCATION**  
(12 Locations Required)  
Diaphragms to be installed from Beam ① to Beam ⑦ prior to Stage I jacking.

**TEMPORARY SUPPORT LOCATIONS**

- \* 40k Dead Load/Girder Unfactored plus 7k Lateral Windload (Total/Stage)
  - \*\* 55k Dead Load/Girder Unfactored plus 8k Lateral Windload (Total/Stage)
- Temporary Support Designs shall include allowance for Construction Live Load on Deck. Specify Live Load Limits on Shoring Plan & Design.



**STRAP PLATE**

(10 Required)  
(4 Similar Required at Fascia girders)

**TEMPORARY SUPPORT NOTES:**

Additional bearing stiffeners and diaphragms, at Spans 4 & 6, shall be in place at Temporary Support Locations prior to jacking.

See Utility Location Plan for approximate locations of utilities at Pier 3 and Pier 6.

At least once per week the Contractor shall verify low steel elevations at Girders 1, 4, and 7 for Spans 3, 4, 6, and 7 on either side of Piers 3 and 6 during the duration of the load being carried at the Temporary Support Locations. Elevations shall be forwarded to the Engineer within 24 hours.

**TEMPORARY SUPPORT & DIAPHRAGM DETAILS**  
GARFIELD AVENUE OVER CANADIAN NATIONAL RAILROAD  
CITY OF DECATUR  
MACON COUNTY  
STA. 12+59.88  
STRUCTURE NUMBER 058-6000

DATE: FEB. 2009  
DRAWN BY: MLO  
CHECKED BY: PBB