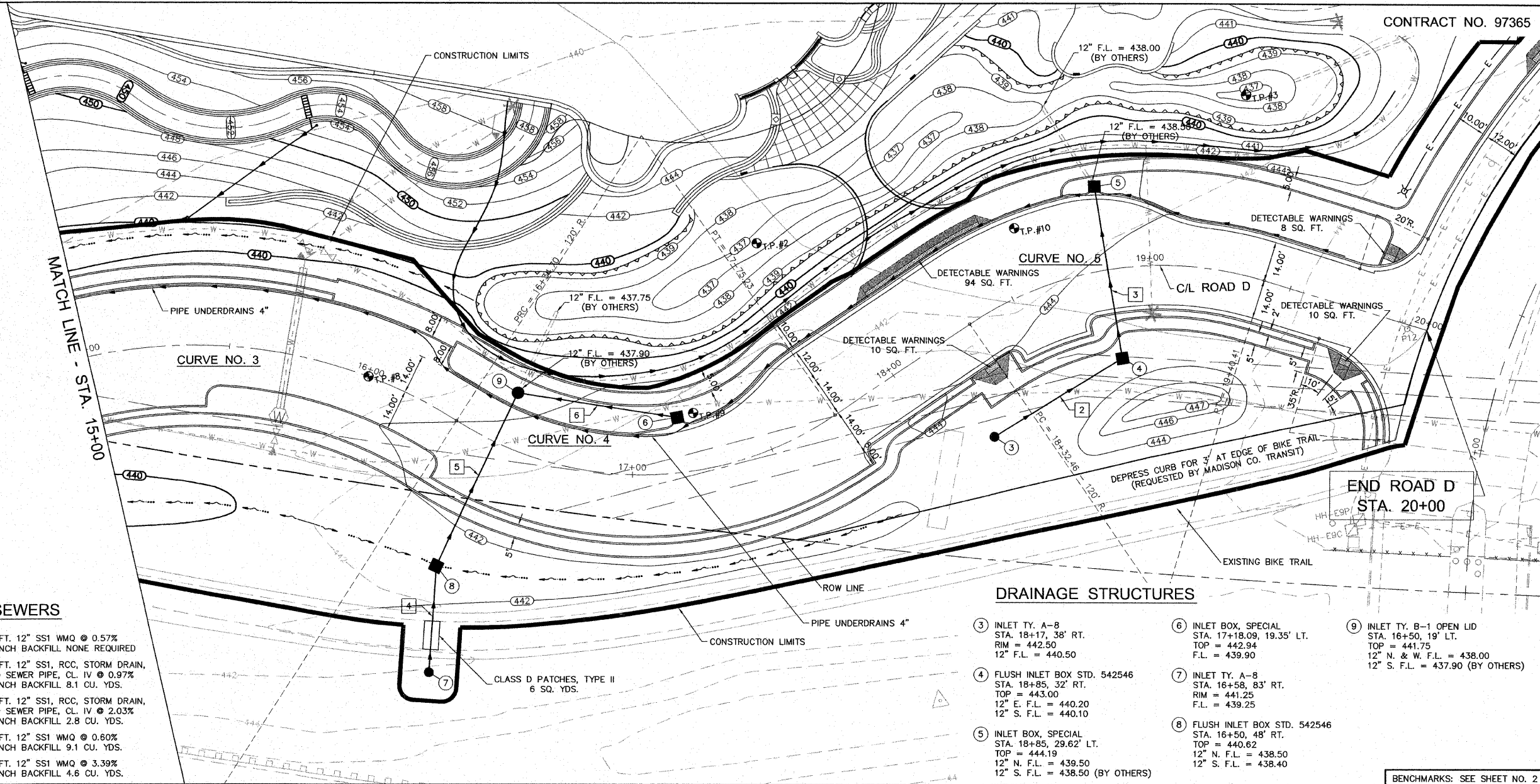


CENTERLINE CURVE DATA

- CURVE NO. 3**
 P.I. STA. = 15+69.10
 $\Delta = 47^{\circ}02'56''$
 $D = 33^{\circ}42'12''$
 $R = 170.00'$
 $T = 74.00'$
 $L = 139.60'$
 $E = 15.41'$
 S.E. = \searrow NO SUPERELEVATIONS
 S.A. = \searrow
 S.R. = \searrow
- CURVE NO. 4**
 P.I. STA. = 17+14.27
 $\Delta = 67^{\circ}05'58''$
 $D = 47^{\circ}44'47''$
 $R = 120.00'$
 $T = 79.58'$
 $L = 140.53'$
 $E = 23.99'$
 S.E. = \searrow NO SUPERELEVATIONS
 S.A. = \searrow
 S.R. = \searrow
- CURVE NO. 5**
 P.I. STA. = 18+90.39
 $\Delta = 51^{\circ}32'37''$
 $D = 47^{\circ}44'47''$
 $R = 120.00'$
 $T = 57.94'$
 $L = 107.95'$
 $E = 13.25'$
 S.E. = \searrow NO SUPERELEVATIONS
 S.A. = \searrow
 S.R. = \searrow

STORM SEWERS

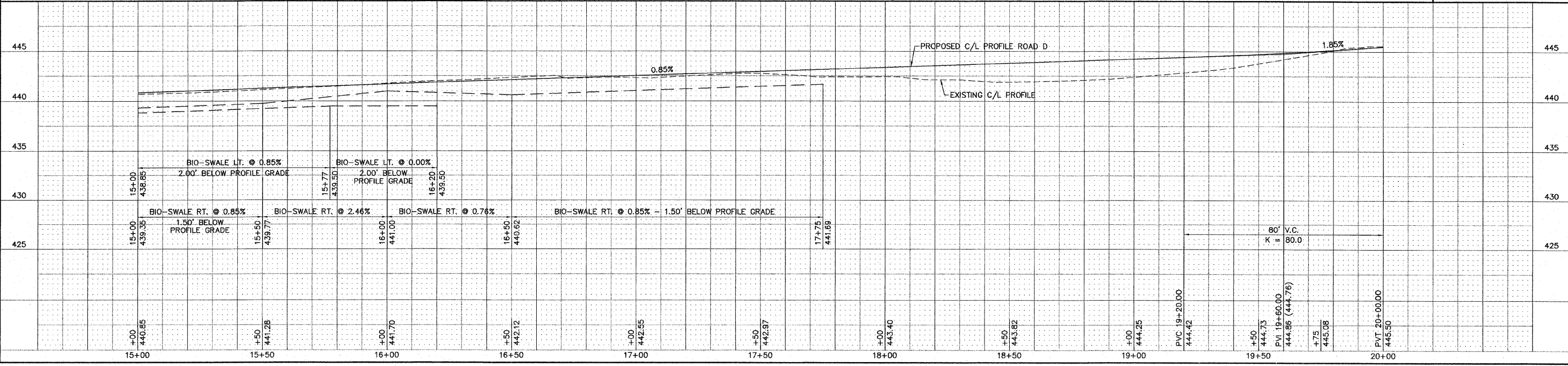
- 2 3 TO 4 53 FT. 12" SS1 WMQ @ 0.57%
TRENCH BACKFILL NONE REQUIRED
- 3 4 TO 5 62 FT. 12" SS1, RCC, STORM DRAIN,
AND SEWER PIPE, CL. IV @ 0.97%
TRENCH BACKFILL 8.1 CU. YDS.
- 4 7 TO 8 37 FT. 12" SS1, RCC, STORM DRAIN,
AND SEWER PIPE, CL. IV @ 2.03%
TRENCH BACKFILL 2.8 CU. YDS.
- 5 8 TO 9 67 FT. 12" SS1 WMQ @ 0.60%
TRENCH BACKFILL 9.1 CU. YDS.
- 6 6 TO 9 56 FT. 12" SS1 WMQ @ 3.39%
TRENCH BACKFILL 4.6 CU. YDS.



DRAINAGE STRUCTURES

- 3 INLET TY. A-8
STA. 18+17, 38' RT.
RIM = 442.50
12" F.L. = 440.50
- 4 FLUSH INLET BOX STD. 542546
STA. 18+85, 32' RT.
TOP = 443.00
12" E. F.L. = 440.20
12" S. F.L. = 440.10
- 5 INLET BOX, SPECIAL
STA. 18+85, 29.62' LT.
TOP = 444.19
12" N. F.L. = 439.50
12" S. F.L. = 438.50 (BY OTHERS)
- 6 INLET BOX, SPECIAL
STA. 17+18.09, 19.35' LT.
TOP = 442.94
F.L. = 439.90
- 7 INLET TY. A-8
STA. 16+58, 83' RT.
RIM = 441.25
F.L. = 439.25
- 8 FLUSH INLET BOX STD. 542546
STA. 16+50, 48' RT.
TOP = 440.62
12" N. F.L. = 438.50
12" S. F.L. = 438.40
- 9 INLET TY. B-1 OPEN LID
STA. 16+50, 19' LT.
TOP = 441.75
12" N. & W. F.L. = 438.00
12" S. F.L. = 437.90 (BY OTHERS)

BENCHMARKS: SEE SHEET NO. 2



CONTRACT NO. 97365

SHEPPARD, MORGAN & SCHWAAB, INC.
 CONSULTING ENGINEERS AND LAND SURVEYORS
 215 MARKET STREET, P.O. BOX E, ALTON, IL 62002 618462-9755 E-MAIL: MAIL@SMSENGINEERS.COM
 10 CENTRAL INDUSTRIAL DRIVE, GRANITE CITY, IL 62040 618877-8700 E-MAIL: MAIL@SMSENGINEERS.COM
 DESIGN FIRM # 184-000992

LEWIS & CLARK COMMUNITY COLLEGE
 SECTION 05-00001-00-PK
 ACCESS ROADS FOR THE
 NATIONAL GREAT RIVERS RESEARCH AND EDUCATION CENTER
 PLAN AND PROFILE - ROAD D

DWG. NO. PHASE I RDWY P-P.DWG
 REF. BK. - PG. -
 JOB NO. 457111.1
 DSN. BY: DEG
 DWN. BY: CAD
 CHK. BY: DEG
 DATE: SEPT. 8, 2008
 SCALE: 1" = 20' H.
 1" = 5' V.
 SHEET 12 OF 36

S:\Lanc Projects\A4C 405829.dwg\Phase I Rdwy P-P.dwg 2/2/2009 8:02:10 AM jman 1:20