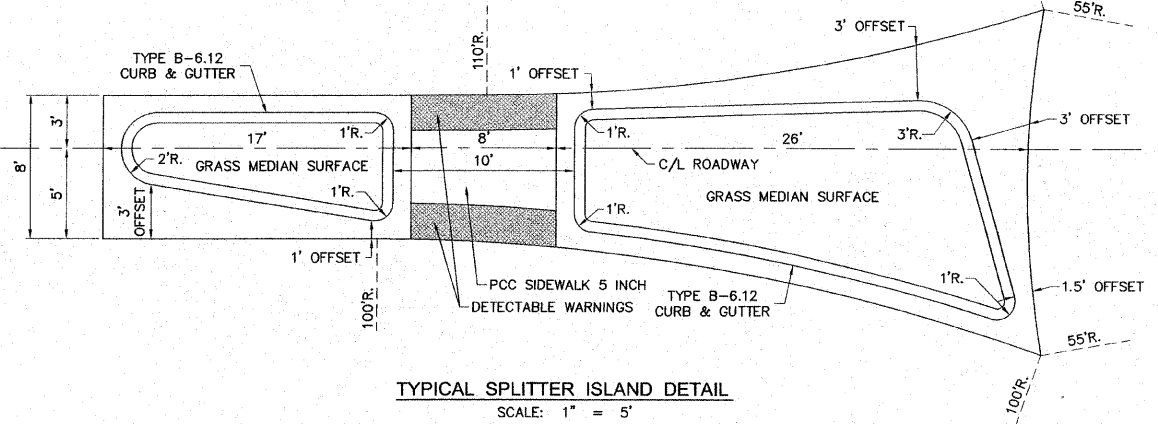
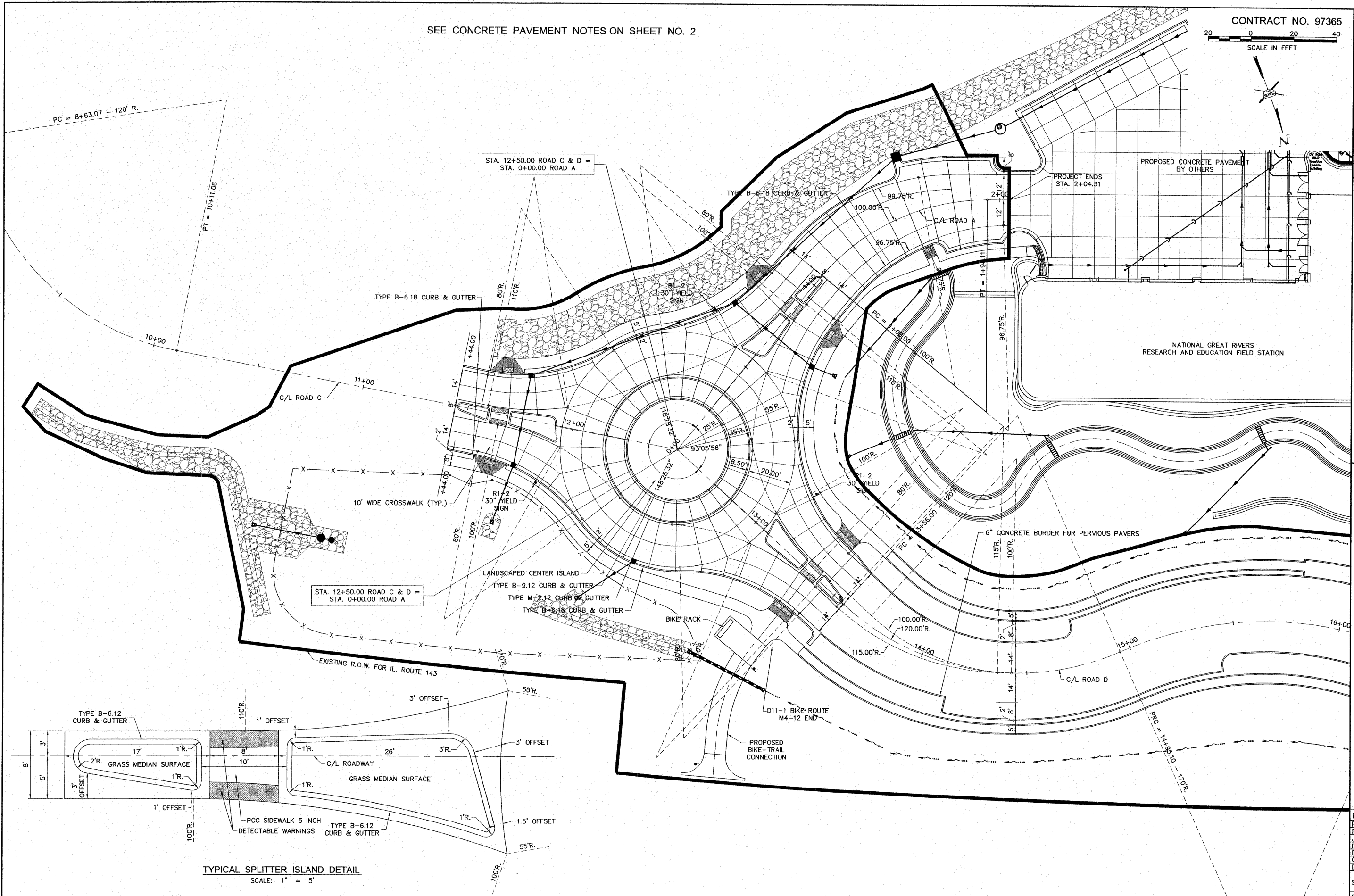


SEE CONCRETE PAVEMENT NOTES ON SHEET NO. 2

CONTRACT NO. 97365
 SCALE IN FEET



TYPICAL SPLITTER ISLAND DETAIL
 SCALE: 1" = 5'

REVISIONS

SMS ENGINEERS
 Sheppard, Morgan & Schwaab, Inc.
 CONSULTING ENGINEERS AND LAND SURVEYORS
 215 Market Street, P.O. Box E, Alton, IL 62002 618492-2925 E-mail: mail@smsengineers.com
 10 Central Industrial Drive, Grantville, IL 62040 618877-5700 E-mail: mail@smsengineers.com
 DESIGN FIRM # 184-000992

LEWIS & CLARK COMMUNITY COLLEGE
 SECTION 05-00001-00-PK
 ACCESS ROADS FOR THE
 NATIONAL GREAT RIVERS RESEARCH AND EDUCATION CENTER
 ROUNDABOUT GEOMETRICS AND JOINTS

DWG. NO. PHASE I ROUNDABOUT DETAIL.DWG
 REF. BK. PG. 1
 JOB NO. 457111.1
 DSN. BY: DEG
 DWN. BY: CAD
 CHK. BY: DEG
 DATE: SEPT. 8, 2008
 SCALE: 1" = 20'
 SHEET 20 OF 36

S:\Land Projects\AAC 455252\dwg\Phase I Roundabout\Detail.dwg, 18/09/2008 3:30:15 PM, jman, 120