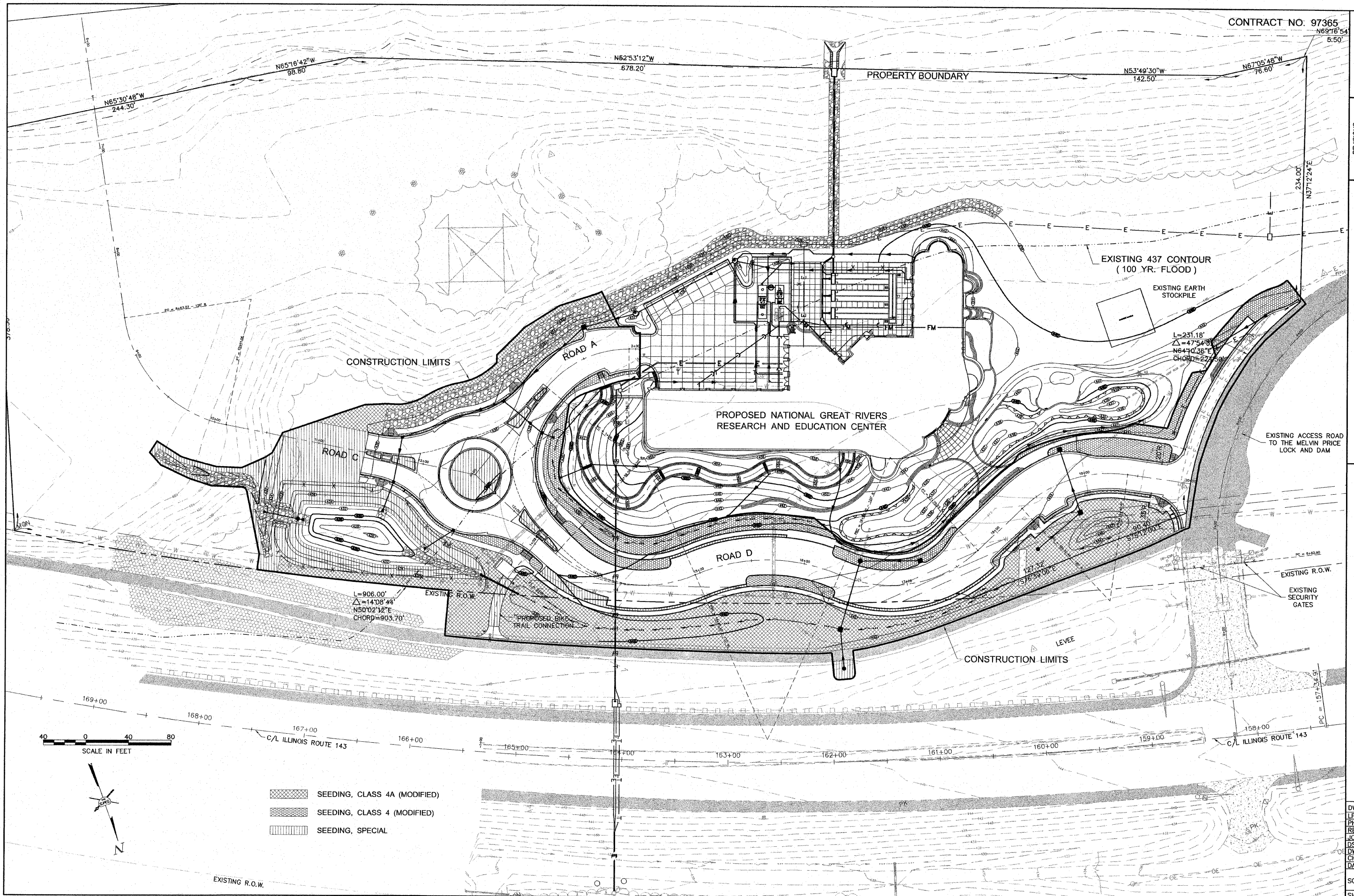





CONTRACT NO. 97365  
 N69°18'54" 6.50'



-  SEEDING, CLASS 4A (MODIFIED)
-  SEEDING, CLASS 4 (MODIFIED)
-  SEEDING, SPECIAL

NO.	REVISIONS

**SMS ENGINEERS**  
 Sheppard, Morgan & Schwaab, Inc.  
 CONSULTING ENGINEERS AND LAND SURVEYORS  
 215 Market Street, P.O. Box E, Alton, IL 62002 618462-9755 E-mail: mail@smsengineers.com  
 10 Central Industrial Drive, Granite City, IL 62040 618677-8700 E-mail: mail@smsengineers.com  
 DESIGN FIRM # 184-000992

LEWIS & CLARK COMMUNITY COLLEGE  
 SECTION 05 - 00001 - 00 - PK  
 ACCESS ROADS FOR THE  
 NATIONAL GREAT RIVERS RESEARCH AND EDUCATION CENTER  
 LANDSCAPE PLAN

DWG. NO. LEXVAIC 405829  
 PHASE I LANDSCAPE.DWG  
 REF. BK. PG. -  
 JOB NO. -  
 DSN. BY: DEG  
 DWN. BY: CAD  
 CHK. BY: DEG  
 DATE: SEPT. 8, 2008  
 SCALE: 1" = 40'  
 SHEET 23 OF 36

S:\land Projects\A1C-405829\Phase I Landscape.dwg 2/2/2008 8:27:48 AM jman 1:40