

F.A.U. RTE.	SECTION	COUNTY	TOTAL SHEETS	SHEET NO.
9024	07-00187-02-RP	MADISON	111	1
FED. ROAD DIST. NO.	ILLINOIS	FED. AID PROJECT		
CONTRACT NO. 97376				

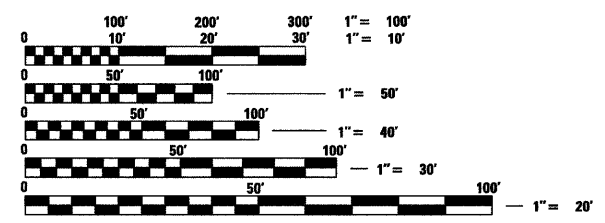
**STATE OF ILLINOIS**  
**DEPARTMENT OF TRANSPORTATION**  
**DIVISION OF HIGHWAYS**  
**F.A.U. ROUTE 9024 (MOCKINGBIRD LANE)**  
**PHASE II**  
**GRANITE CITY, ILLINOIS**  
**FEDERAL PROJECT NO. HPP-0031(027)**  
**JOB NO. C-98-322-08**  
**SECTION NO. 07-00187-02-RP**  
**MADISON COUNTY**  
**HIGH PRIORITY FUNDS**

**INDEX OF SHEETS**

SHEET NUMBER	DESCRIPTION
1	COVER SHEET
2	GENERAL NOTES AND LEGEND
3-4	SUMMARY OF QUANTITIES
5 - 8	TYPICAL SECTIONS - EXISTING
9 - 12	TYPICAL SECTIONS - PROPOSED
13 - 20	QUANTITY SCHEDULES
21	REFERENCE POINT TIES, COORDINATES AND BENCHMARKS
22 - 32	PLAN AND PROFILE SHEETS
33	ADVANCED WARNING SIGNS
34 - 37	STAGE CONSTRUCTION
38 - 51	DRAINAGE SHEETS
52 - 53	INTERSECTION GEOMETRIC DETAIL SHEETS
54 - 56	PAVEMENT MARKING SHEETS
57 - 61	REMOVAL SHEETS
62 - 65	EROSION AND SEDIMENT CONTROL SHEETS
66 - 68	ENTRANCE DETAILS
69 - 70	MISCELLANEOUS DETAIL SHEETS
71 - 111	CROSS SECTIONS

**STANDARDS**

STD. NO.	
000001-05	604091-02
001006	606001-04
280001-04	664001-02
424001-05	701311-03
442201-03	701501-05
542301-02	701801-04
602301-02	701901-01
602306-02	720001-01
602401-02	720006-02
602406-03	720011-01
602601-02	729001-01
602701-02	780001-02
604001-03	BLR 17-4
604006-04	BLR 22-6



FULL SIZE PLANS HAVE BEEN PREPARED USING STANDARD ENGINEERING SCALES, REDUCED SIZED PLANS WILL NOT CONFORM TO STANDARD SCALES, IN MAKING MEASUREMENTS ON REDUCED PLANS, THE ABOVE SCALES MAY BE USED.

**J.U.L.I.E.**  
**JOINT UTILITY LOCATION INFORMATION FOR EXCAVATION**  
**1-800-892-0123**

**DESIGN DESIGNATION**  
**FUNCTIONAL CLASSIFICATION: URBAN COLLECTOR**  
**ADT: 3350 (2005) 4080 (2025)**  
**DHV (2025) : 408**  
**DESIGN SPEED: 30 MPH**

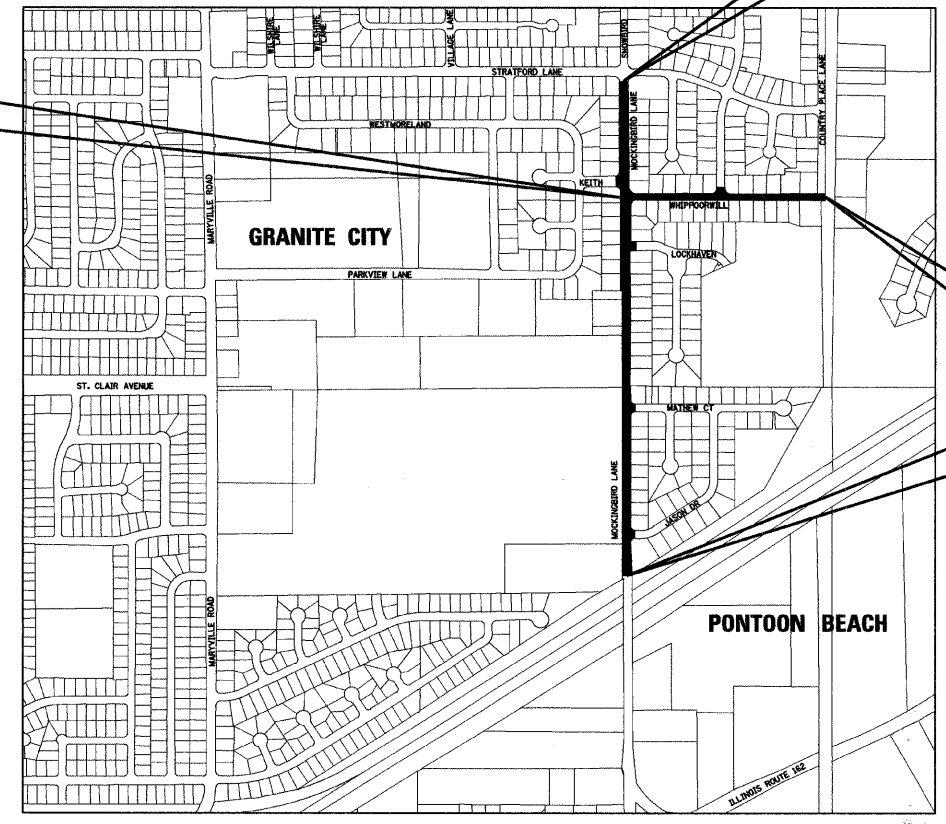
PLAN 1" = 20'  
 PROFILE HORIZ. 1" = 20'  
 PROFILE VERT. 1" = 5'  
 CROSS SECTIONS 1" = 10' HORIZ.  
 1" = 5' VERT.

**BEGIN PROJECT**  
**STA. 10 + 13.00**

**END PROJECT**  
**STA. 148 + 42.56**

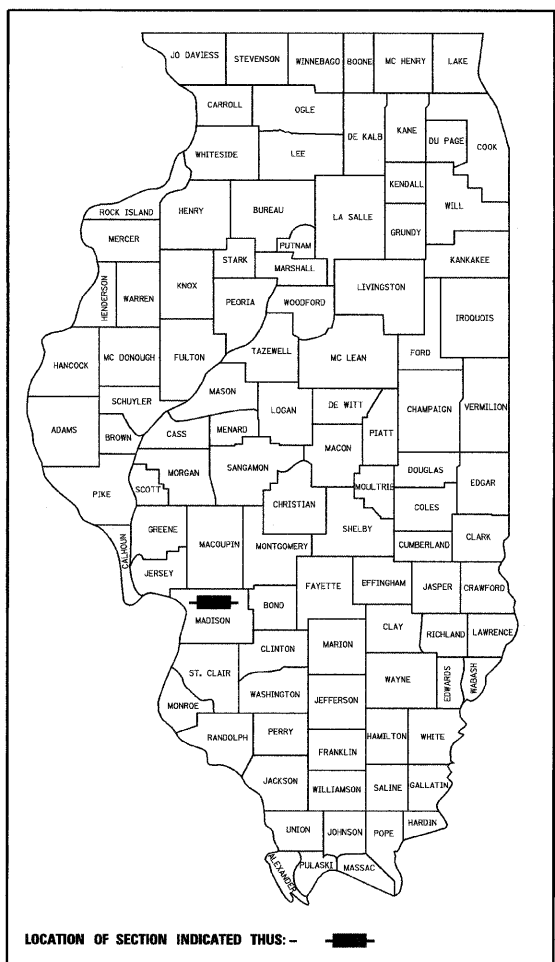
**END PROJECT**  
**STA. 22 + 50.04**

**BEGIN PROJECT**  
**STA. 116 + 92.00**



**LOCATION MAP**

**SCALE: 1" = 400'**  
**NET LENGTH OF PROJECT: 3150.56 FEET - 0.597 MILES - MOCKINGBIRD LANE**  
**NET LENGTH OF PROJECT: 1237.04 FEET - 0.234 MILES - WHIPPOORWILL LANE**  
**SECTION 9, 10, 15 & 16 T. 3 N., R. 9 W., 3RD P.M.**



**STATE OF ILLINOIS**  
**Department of Transportation**

Approved: 4-3-09  
*Ed Wagner*  
 Mayor, Granite City

Passed: 4/10/09  
*[Signature]*  
 District 8 Engineer of Local Roads & Streets

Releasing for Bid Based on Limited Review: 4/10/09  
*Walter C. Davis, Jr.*  
 Deputy Director of Highways, Region 5 Engineer



*Brian E. Kulick* 4/3/09  
**BRIAN E. KULICK, P.E. No. 49936**  
 (Printed by Authority of the State of Illinois)  
 Job No. 050210

**Juneau Associates, Inc. P.C.**  
 CONSULTING ENGINEERS AND LAND SURVEYORS  
 2100 State Street, P.O. Box 1325  
 Granite City, Illinois 62040  
 Phone: (618) 387-1400 / (618) 452-5535  
 Fax: (618) 452-5541