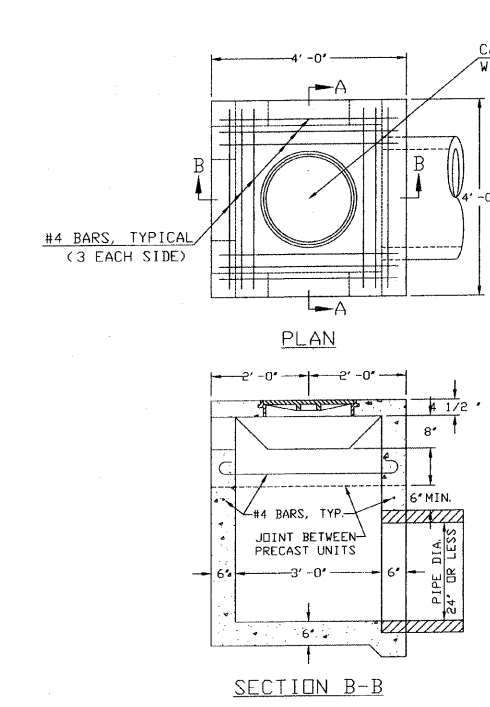
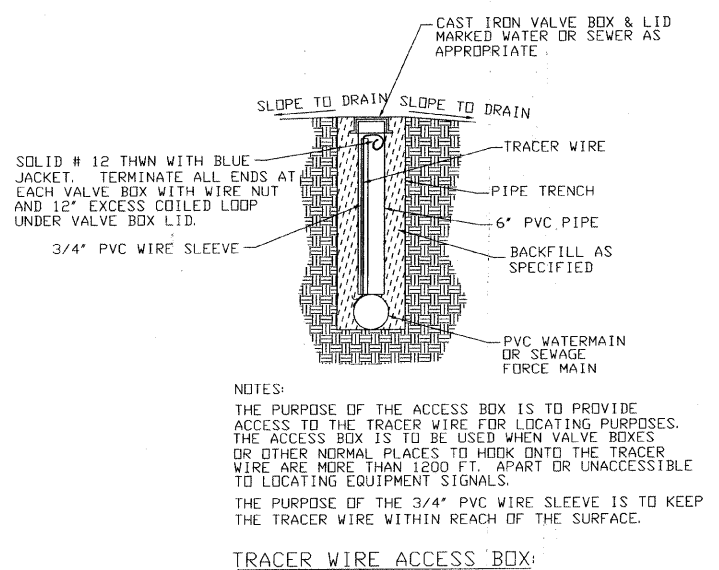
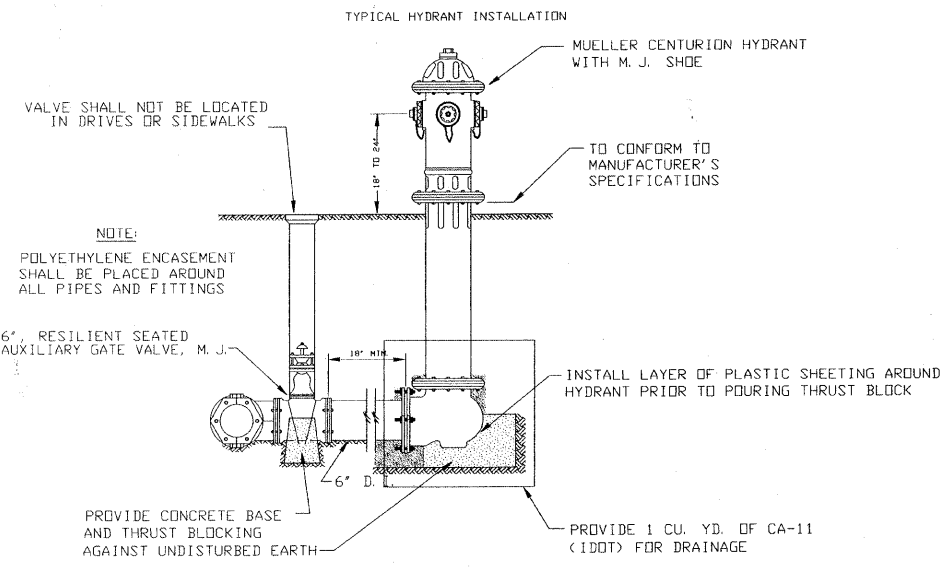


F. A. U. ROUTE	SECTION	COUNTY	TOTAL SHEETS	SHEET NUMBER
9732	00-00103-00-FP	JACKSON	37	3
CITY OF CARBONDALE		PROJECT NO. M-5008(19)		
CONTRACT NO. 99182		JOB NO. C99-504-03		

FEDERAL AID PROJECT



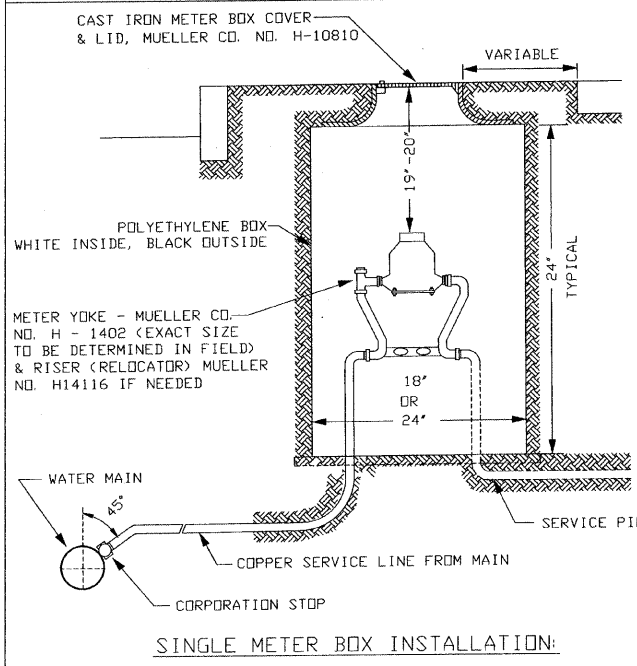
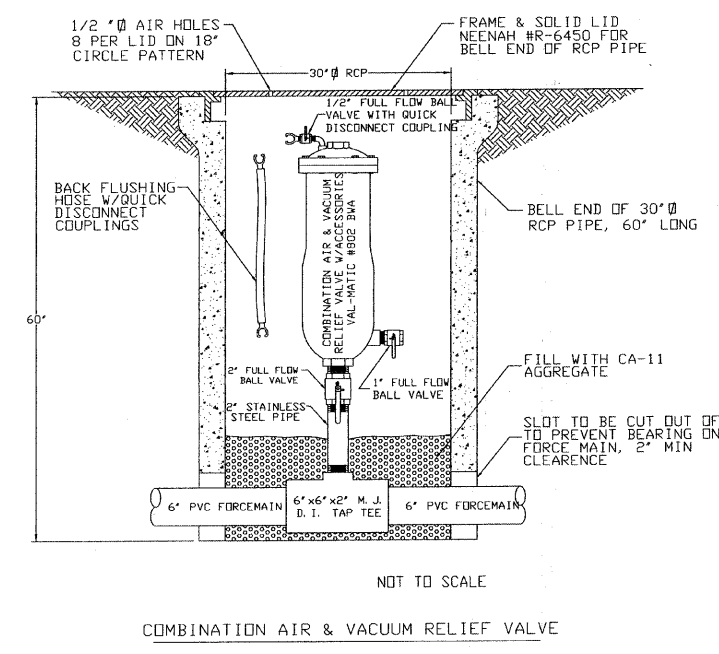
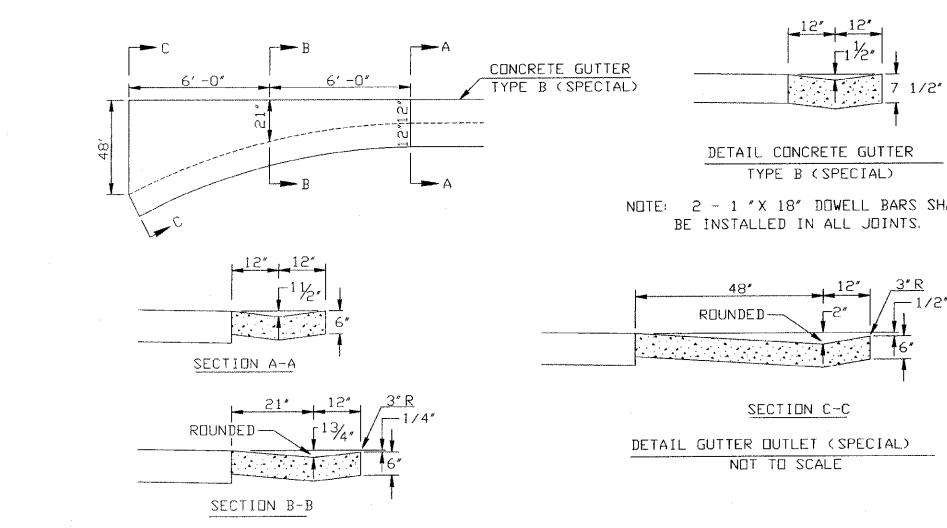
CLASS SI CONCRETE SHALL BE USED THROUGHOUT.

THE INLET SHALL BE PAID FOR AT THE CONTRACT UNIT PRICE FOR INLETS, SPECIAL, TYPE I, WHICH PRICE SHALL INCLUDE THE COST OF THE CAST IRON FRAME WITH TYPE B CLOSED LID AND REINFORCEMENT BARS AND SHALL BE PAYMENT IN FULL FOR FURNISHING ALL MATERIALS AND FOR CONSTRUCTING THE WORK COMPLETE IN PLACE.

THE INLET MAY BE PRECAST OR MAY BE CAST IN PLACE. JOINTS AND STEEL BARS IN THE WALLS SHALL BE OMITTED IF CAST IN PLACE. IF PRECAST, THE JOINTS AND STEEL BARS SHALL BE PLACED AS SHOWN.

THE DEPTH OF THE INLET SHALL BE VARIED TO FIT FIELD CONDITIONS. THE LID MAY BE CAST SEPARATELY OR MONOLITHICALLY WITH THE UPPER SECTION OF THE INLET.

CAST IRON FRAME SHALL BE NEENAH #R-1537



SCHEDULE: WATER UTILITY

OWNED BY LAKESIDE WATER DISTRICT

LOCATION (STATION)	OFFSET	WATER METER AND SERVICE LINE TO BE RELOCATED/ADJUSTED	WATER VALUES TO BE ADJUSTED
2+54	8' LT	1	1
5+80	33' RT	1	1
5+80	35' RT	1	1
9+51	10' LT	1	1
9+63	2' LT	1	1
TOTALS		3	2

* LAKESIDE WATER DISTRICT TO PERFORM THIS WORK. NO PAY ITEMS IN CONTRACT.
* CONTRACTOR TO PERFORM THIS WORK. PAY ITEM INCLUDED IN CONTRACT.

SCHEDULE: CURB AND GUTTER

CURB AND GUTTER (INSTALLATION & REMOVAL)

LOCATION (STATION)	OFFSET	UNIT	FOOT	FOOT	EACH	FOOT	FOOT	SG	F	SQ	F	SQ	F
2+00 TO 2+83	28' LT TO 24' LT				83								
2+63 TO 2+75	23' RT												
2+75 TO 4+50	23' RT			175	1								
4+50 TO 5+71	23' RT TO 20.30' RT			121									
9+94 TO 9+96	35' RT TO 40' RT												
10+21 TO 10+23	35' RT TO 40' RT												
11+32.5 TO 11+55	28.5' LT TO 5' LT												
11+77 TO 11+97	6' LT TO 18' LT												
11+32.5 TO 11+53	27' LT TO RC		20										
11+77 TO 11+97	27' LT TO RC		20										
3+47.5 TO 3+53.7	14.6' LT TO 51.5' LT												
3+77.3 TO 4+03.6	6.6' LT TO 8.6' LT												
3+82.8 TO 4+04.5	6.9' LT TO 14.0' LT												
3+82.8 TO 4+06.5	6.9' LT TO 25.0' LT												
3+471 TO 3+538	23' LT TO 51.6' LT		32.2										
3+77.3 TO 3+93.8	6.6' LT TO 23' LT		48										
13+02.9 TO 13+29.2	20.9' LT TO 42.1' LT												
13+51 TO 13+76.5	42.1' LT TO 20.7' LT												
13+04.2 TO 13+28.2	18' LT TO 42.1' LT		38										
13+52 TO 13+76	42.1' LT TO 18' LT		38										
20+27.7 TO 20+36.3	16.2' RT TO 40' RT												
20+60.2 TO 20+69	40' RT TO 16' RT												
20+21.3 TO 20+36.3	18' RT TO 40' RT		31										
20+60.3 TO 20+75.3	40' RT TO 18' RT		31										
22+85.7 TO 22+95.5	15.7' RT TO 42.1' RT												
22+76.5 TO 22+95.5	18' RT TO 42.1' RT												
23+20.6 TO 23+29.6	42.1' RT TO 18' RT		35										
22+78.4 TO 22+96.6	6.4' LT TO 40' LT												
23+26.6 TO 23+45.3	40' LT TO 5' LT												
22+76.6 TO 22+96.6	18' LT TO 40' LT		33.4										
23+26.6 TO 23+46.6	40' LT TO 18' LT		33.4										
TOTALS			395	296	1	449	74	219	254				

SCHEDULE: SANITARY SEWER UTILITY

OWNED BY THE CITY OF CARBONDALE

LOCATION (STATION)	OFFSET	UNIT	FOOT	FOOT	EACH	EACH	CU. YD	EACH	EACH	FOOT	EACH	EACH
4+36.5	18.5' LT											
4+40 TO 32+97	40' RT TO 35' RT		2882	2865			55					
5+98	20' RT TO 30' RT				1							
8+78	30.3' LT											
8+98	53' LT											
9+20	52' LT											
12+68	40.5' RT											
14+86	39' RT TO 44' RT											
16+48	35' RT											
16+68	35' RT											
19+82	20' RT TO 35' RT											
21+03	15' RT TO 35' RT											
22+06	29' RT TO 39' RT											
23+36	31' RT TO 39' RT											
24+35	21' LT TO 35' LT											
27+37 TO 27+59	35' RT											
31+58	24' RT TO 35' RT											
TOTALS			2882	2865	2	2	55	2	2	22	7	7

SCHEDULE: WATER UTILITIES

OWNED BY THE CITY OF CARBONDALE

LOCATION (STATION)	OFFSET	UNIT	EACH	EACH	FOOT	FOOT	FOOT	EACH
9+67	29' RT TO 39' RT							
10+50	7' LT TO 38' LT		1	1				
12+32	33' RT TO 44' RT				45			
13+09	15' RT							
13+80 TO 13+85	19' LT TO 45' LT		1		5			
14+68	40' LT TO 40' RT							
16+55	34' RT TO 41' RT							
19+55	31' RT TO 39' RT							
20+79	36' RT TO 39' RT							
24+50	29' RT TO 41' RT		3		270			
TOTALS			2	8	50	270	320	1

* NOT OWNED BY CITY OF CARBONDALE, HOWEVER, CONTRACTOR TO PERFORM THIS WORK.

** NOT PAID FOR SEPARATELY, BUT CONSIDERED INCIDENTAL TO RECONNECT SANITARY SERVICE.



REV. 9-24-03 JT
REV. 3-07-08 CEB