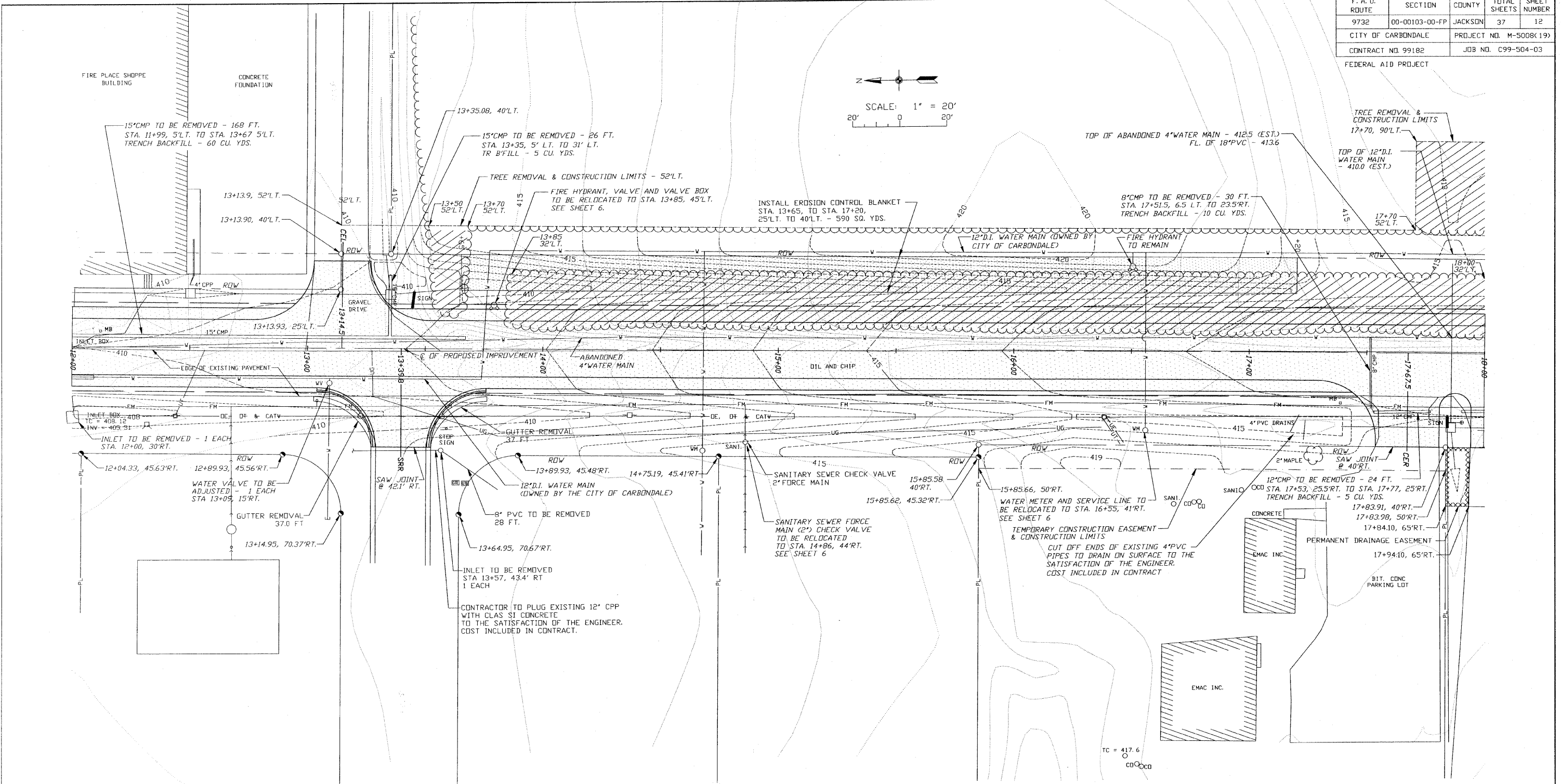


F. A. U. ROUTE	SECTION	COUNTY	TOTAL SHEETS	SHEET NUMBER
9732	00-00103-00-FP	JACKSON	37	12
CITY OF CARBONDALE		PROJECT NO. M-5008(19)		
CONTRACT NO. 99182		JOB NO. C99-504-03		

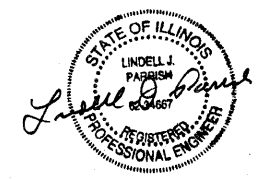
FEDERAL AID PROJECT



LEGEND

—●— POWER POLE	—●— FENCE
—□— POWER / TELEPHONE POLE	—●— TREELINE
—●— POWER POLE W/ LIGHT	—○— RCP - REINFORCED CONCRETE PIPE
—●— TELEPHONE POLE	—○— CMP - CORRUGATED METAL PIPE CULVERT
—□TP— TELEPHONE PEDESTAL	—○— CPVC - CORRUGATED PLASTIC PIPE CULVERT
—●— ANCHOR	—○TC— TOP OF CASTING - TOP OF CURB
—○— SANITARY SEWER AND MANHOLE	—○FL— FLOW LINE
—○— SANITARY SEWER CLEANOUT	—○PL— PROPERTY LINE
—○— STORM INLET	—○— EXISTING RIGHT-OF-WAY
—○— FIRE HYDRANT	—○— TEMPORARY CONSTRUCTION EASEMENT AND CONSTRUCTION LIMITS
—○— WATER VALVE	—○400— EXISTING CONTOUR
—○— WATER METER	—○400— PROPOSED CONTOUR
—○— WATER MAIN	—○— TREE REMOVAL, ACRES
—○— OVERHEAD ELECTRIC LINE	—○— TREE REMOVAL, UNITS
—○— UNDERGROUND ELECTRIC LINE	—○— DRIVEWAY PAVEMENT REMOVAL
—○— OVERHEAD TELEPHONE LINE	—○— PROPOSED BITUMINOUS CONCRETE PAVEMENT
—○— UNDERGROUND TELEPHONE LINE	—○— PROPOSED EARTH SHOULDER
—○— UNDERGROUND GAS LINE	—○— PROPOSED AGGREGATE SURFACE
—○— CATV - CABLE TELEVISION	
—○— SIGN	

BENCHMARKS
 B.M. NO.3 - 1" CUT ON NORTH SIDE OF CONCRETE BASE TO LIGHT POLE AT STA. 11+30, 40'L.T. (ELEV. = 412.09)
 B.M. NO.4 - 1" CUT AT NORTH EAST CORNER OF CONCRETE PARKING LOT AT STA. 18+50, 65'RT. (ELEV. = 420.12)



CIP NO. ST0102 - REED STATION ROAD
GRADING AND ITEM REMOVAL PLAN
STA. 12+00 TO STA. 18+00