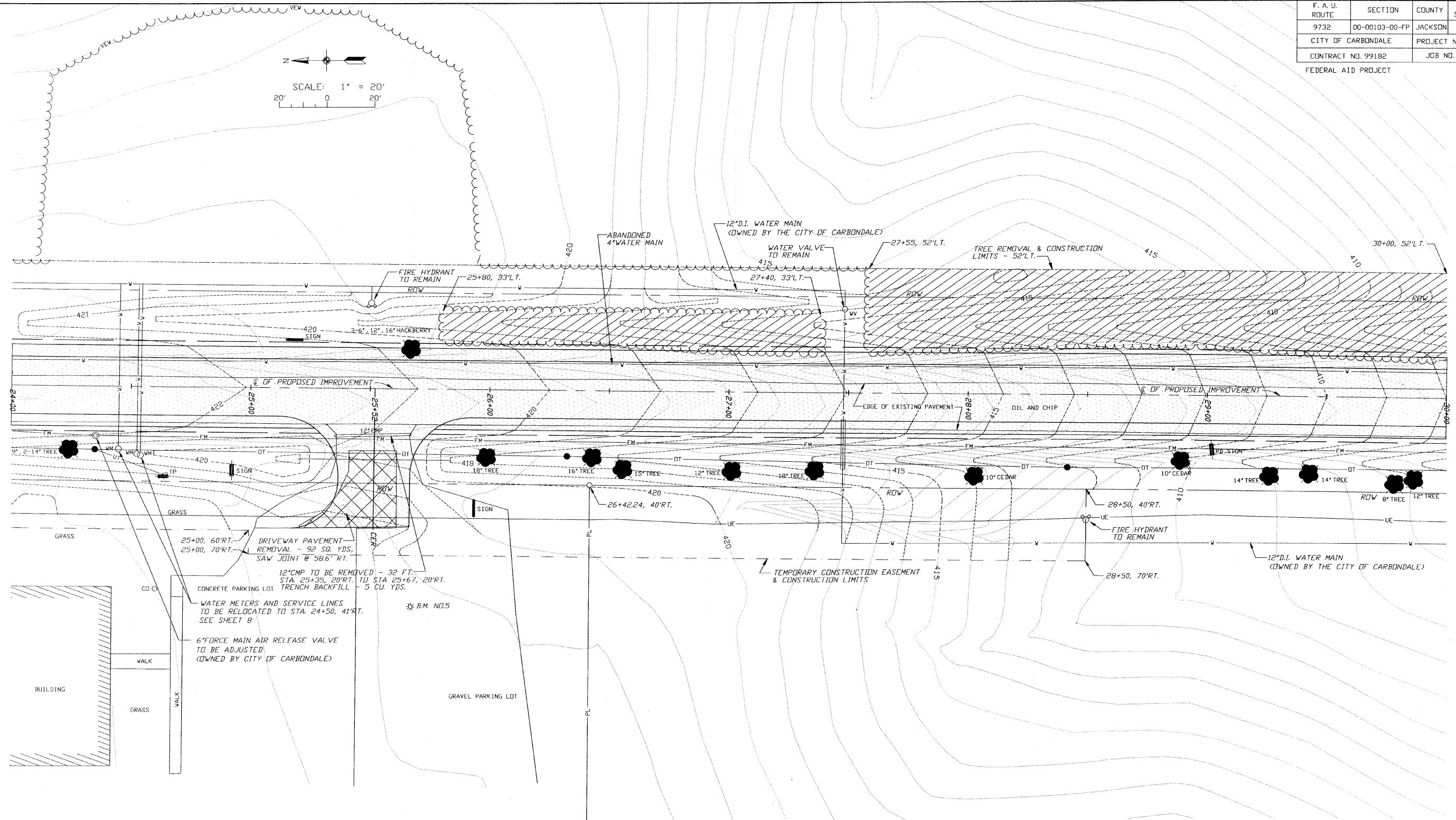
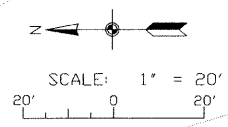


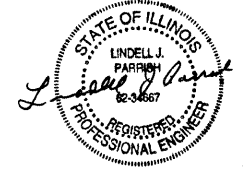
F. A. U. ROUTE	SECTION	COUNTY	TOTAL SHEETS	SHEET NUMBER
9732	00-00103-00-FP	JACKSON	37	14
CITY OF CARBONDALE		PROJECT NO. M-5008(19)		
CONTRACT NO. 99182		JOB NO. C99-504-03		
FEDERAL AID PROJECT				



LEGEND

- | | |
|--|---|
| <ul style="list-style-type: none"> —●— POWER POLE —□— POWER / TELEPHONE POLE —●— POWER POLE W/ LIGHT —●— TELEPHONE POLE —□TP— TELEPHONE PEDESTAL —○— ANCHOR —○— SANITARY SEWER AND MANHOLE —FM— FORCE MAIN —CO— SANITARY SEWER CLEANOUT —○— STORM INLET —○— FIRE HYDRANT —V— WATER VALVE —WM— WATER METER —V— WATER MAIN —DE— OVERHEAD ELECTRIC LINE —UE— UNDERGROUND ELECTRIC LINE —DT— OVERHEAD TELEPHONE LINE —UT— UNDERGROUND TELEPHONE LINE —UG— UNDERGROUND GAS LINE —CATV— CABLE TELEVISION —■— SIGN | <ul style="list-style-type: none"> —x— FENCE —○— TREELINE —RCP— REINFORCED CONCRETE PIPE —CMP— CORRUGATED METAL PIPE CULVERT —CPVC— CORRUGATED PLASTIC PIPE CULVERT —TC— TOP OF CASTING - TOP OF CURB —FL— FLOW LINE —PL— PROPERTY LINE —○— EXISTING RIGHT-OF-WAY —○— TEMPORARY CONSTRUCTION EASEMENT AND CONSTRUCTION LIMITS —400— EXISTING CONTOUR —400— PROPOSED CONTOUR —■— TREE REMOVAL, ACRES —●— TREE REMOVAL, UNITS —X— DRIVEWAY PAVEMENT REMOVAL —■— PROPOSED BITUMINIOUS CONCRETE PAVEMENT —■— PROPOSED EARTH SHOULDER —■— PROPOSED AGGREGATE SURFACE |
|--|---|

BENCHMARKS
 B.M. NO.5 - "□" CUT ON EAST SIDE OF CONCRETE BASE TO LIGHT POLE AT STA. 25+70, 90" RT. (ELEV. = 426.15)



CIP NO. ST0102 - REED STATION ROAD
GRADING AND ITEM REMOVAL PLAN
STA. 24+00 TO STA. 30+00