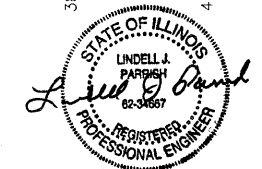
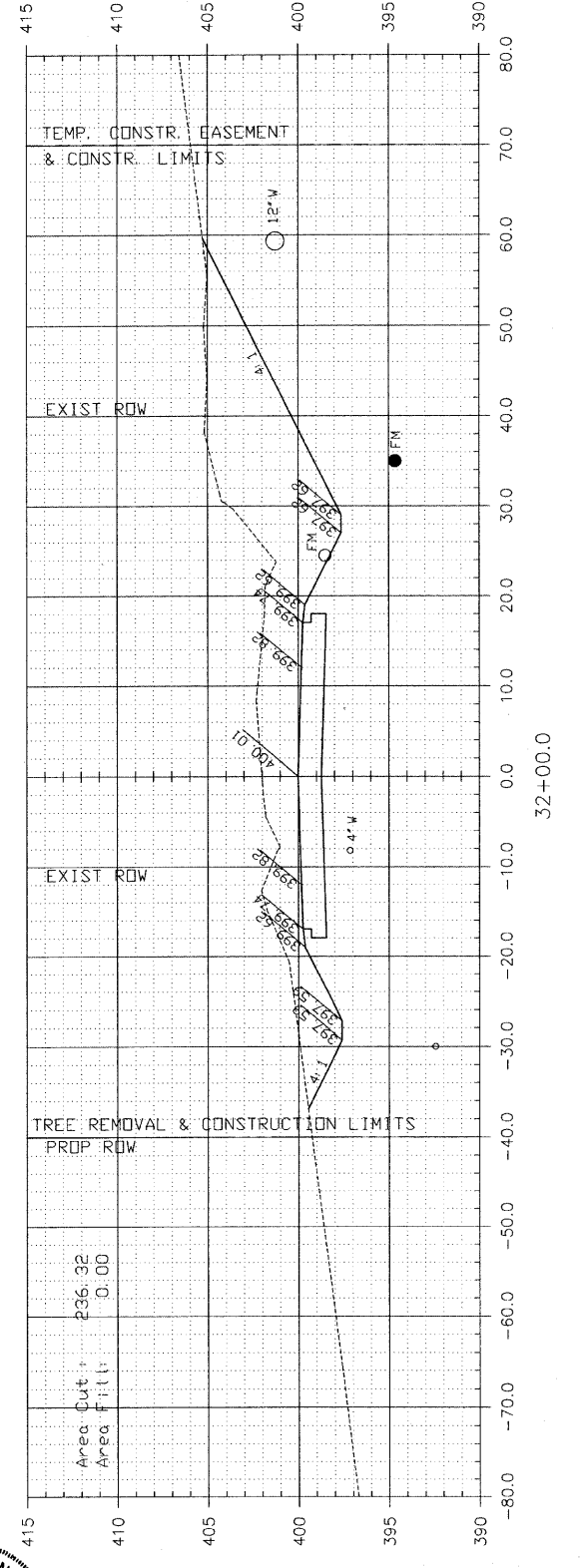
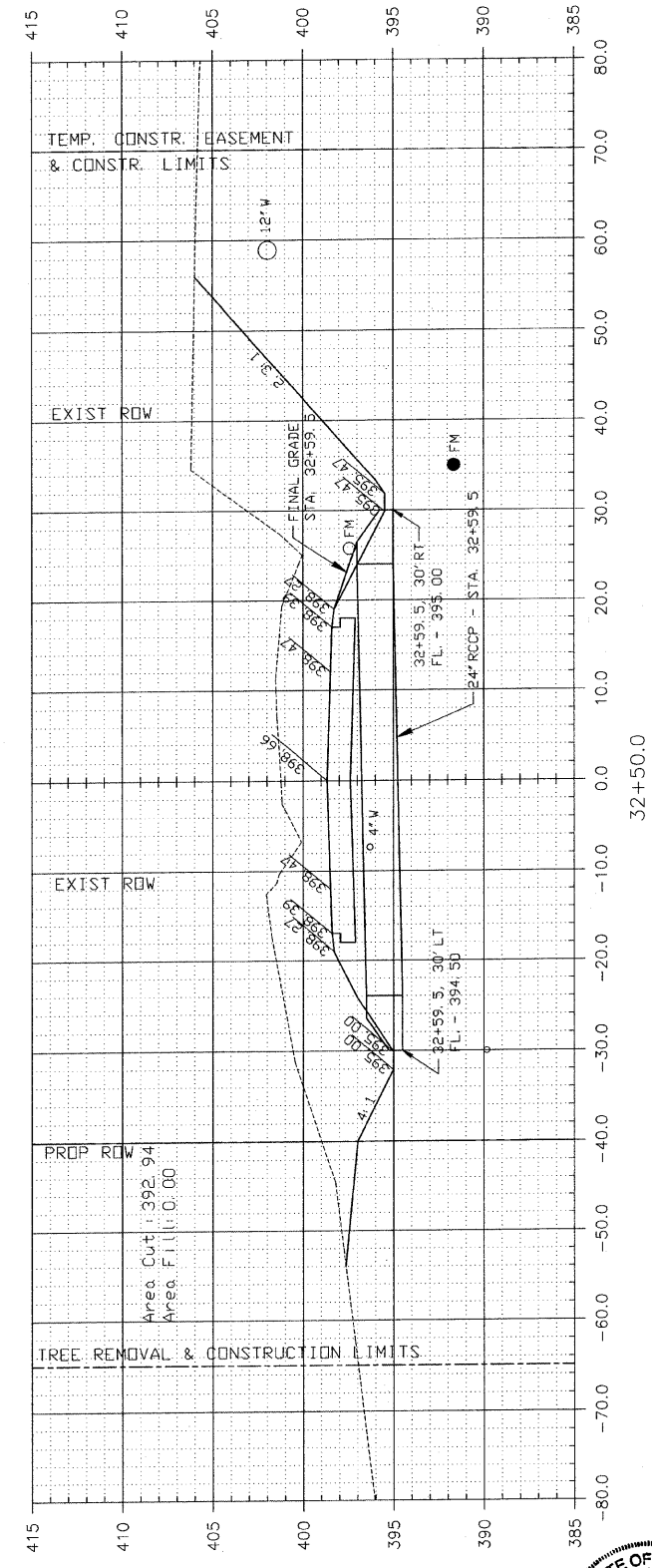
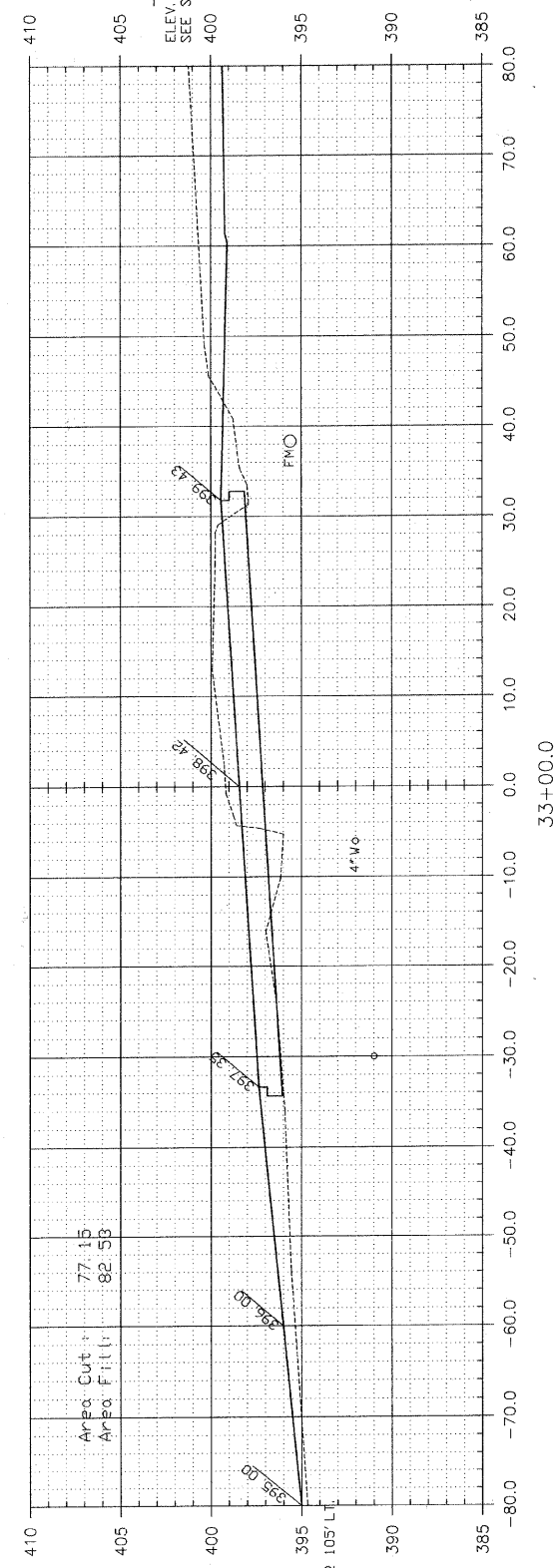
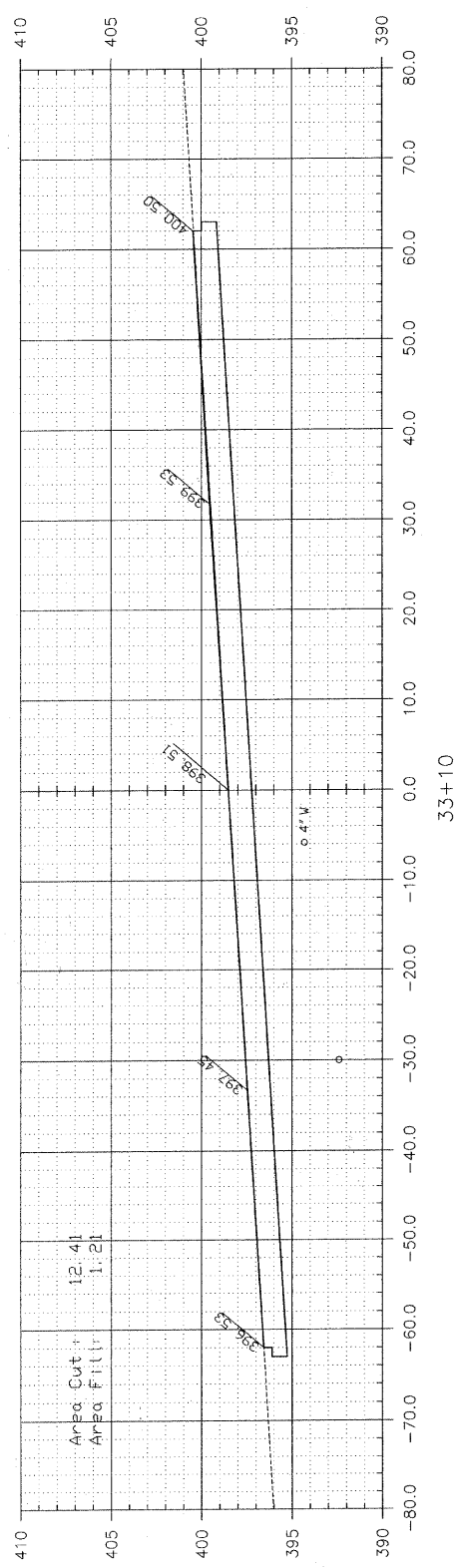


| F. A. U. ROUTE     | SECTION        | COUNTY      | TOTAL SHEETS | SHEET NUMBER |
|--------------------|----------------|-------------|--------------|--------------|
| 9732               | 00-00103-00-FP | JACKSON     | 37           | 31           |
| CITY OF CARBONDALE |                | PROJECT NO. | M-5008(19)   |              |
| CONTRACT NO. 99182 |                | JOB NO.     | C99-504-03   |              |

FEDERAL AID PROJECT

ESTIMATED EARTHWORK QUANTITIES  
 EARTH EXCAVATION - 12,000 CU. YDS.  
 EMBANKMENT - 6,000CU. YDS.  
 WASTE - 4,500BU. YDS. @ 25%.

CROSS SECTION VOLUMES  
 CALCULATED TO FINISH GRADE  
 CUT = 8890CU. YDS.  
 FILL = 8492 CU. YDS.  
 FOR EARTHWORK COMPUTATIONS ADJUST  
 THESE FIGURES TO INCLUDE VOLUMES OF  
 AGGREGATE BASE & BITUMINOUS CONCRETE



NOTE: CUT AND FILL AREA SHOWN ARE TO FINISH GRADE

|                                    |
|------------------------------------|
| CIP NO. ST0102 - REED STATION ROAD |
| CROSS SECTIONS                     |
| STA. 33+00 TO STA. 33+10           |