

INDEX OF SHEETS

SHEET NO.	DESCRIPTION
1	TITLE SHEET
2-3	SUMMARY OF QUANTITIES, TYPICAL SECTIONS, GENERAL NOTES & MISC. DETAILS
4-6	EROSION CONTROL PLAN
7-14	PLAN & PROFILE SHEETS
15-32	ROADWAY CROSS SECTIONS

**THE FOLLOWING STANDARDS
ARE A PART OF THESE PLANS AND
ARE INCLUDED AFTER SHEET NO. 32**

000001-05	STANDARD SYMBOLS, ABBREVIATIONS & PATTERNS
280001-04	TEMPORARY EROSION CONTROL SYSTEMS
406201-01	MAILBOX TURNOUT
542301-02	PRECAST REINFORCED CONCRETE FLARED END SECTION
542306-02	PRECAST REINFORCED CONCRETE ELLIPTICAL FLARED END SECTION
542401-01	METAL END SECTION FOR PIPE CULVERTS
701901-01	TRAFFIC CONTROL DEVICES
720006-02	SIGN PANEL ERECTION DETAILS
720011-01	METAL POSTS FOR SIGNS, MARKERS & DELINEATORS
729001-01	APPLICATIONS OF TYPES A & B METAL POSTS (FOR SIGNS & MARKERS)
B.L.R. 21-8	TYPICAL APPLICATION OF TRAFFIC CONTROL DEVICES FOR CONSTRUCTION ON RURAL LOCAL HIGHWAYS
B.L.R. 22-6	TYPICAL APPLICATION OF TRAFFIC CONTROL DEVICES FOR CONSTRUCTION ON RURAL LOCAL HIGHWAYS (TWO-LANE TWO-WAY RURAL TRAFFIC) (ROAD CLOSED TO THRU TRAFFIC)

PLAN	1" = 50'	
PROFILE	1" = 50'	
PROFILE VERT.	1" = 5'	
CROSS SECTIONS	1" = 5'	

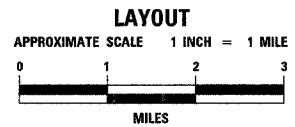
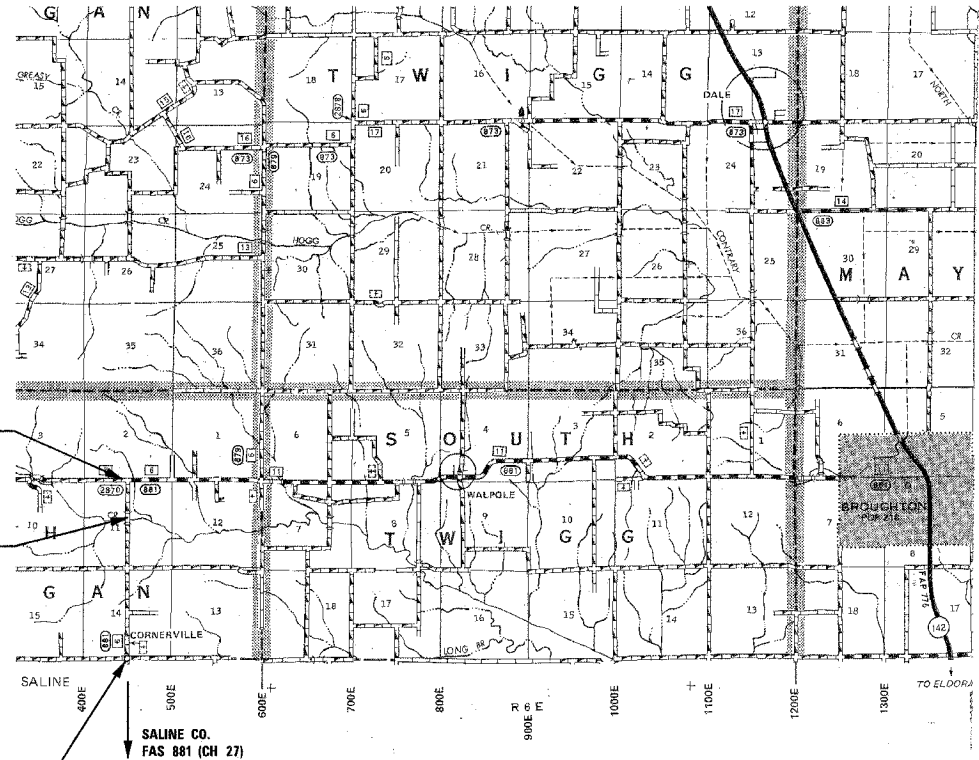
DESIGN DESIGNATION:
DESIGN SPEED: 40 MPH
HIGHWAY CLASS - RURAL MAJOR COLLECTOR
CURRENT A.D.T. = 190
CONTRACT NO. 99340



SECTION 05-00094-00-FP
ENDS STATION 105+90

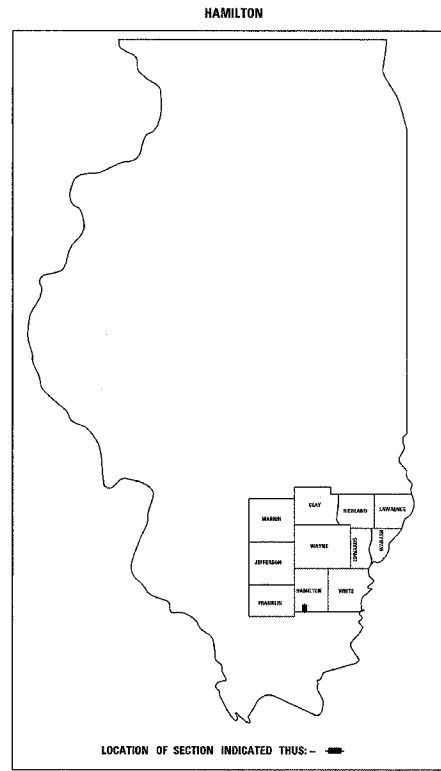
STRUCTURE # 033-3285
OMISSION
STA 82+47 TO STA 83+34

SECTION 05-00094-00-FP
BEGINS STATION 0+09



GROSS LENGTH	10,581 FT	2.004 MILES
OMISSION	87 FT	0.016 MILES
NET LENGTH	10,494 FT	1.988 MILES

STATE OF ILLINOIS
DEPARTMENT OF TRANSPORTATION
DIVISION OF HIGHWAYS
**PLANS FOR PROPOSED
FEDERAL-AID S.T.R. PROJECT**
F.A.S. 881 (CH 6) SECTION 05-00094-00-FP HAMILTON COUNTY
PROJECT RS-881(116) JOB NO. C-99-553-06



STATE OF ILLINOIS
DEPARTMENT OF TRANSPORTATION

APPROVED 3/17/2009
Kim D. Patton
COUNTY ENGINEER

PASSED 4/1/2009
Richard W. Miller
ENGINEER OF LOCAL ROADS AND STREETS

RELEASING FOR BID
BASED ON LIMITED
REVIEW 4/1/09
Mary C. Lamie
MARY C. LAMIE, P.E.
DEPUTY DIRECTOR OF HIGHWAY
REGION FIVE ENGINEER

F.A.S.	SECTION	COUNTY	TOTAL SHEETS	SHEET NO.
881	05-00094-00-FP	HAMILTON	32	1
FED. ROAD DIST. NO. 9 ILLINOIS CORNERVILLE ROAD				
PROJECT # RS-881(116) CONTRACT # 99340				
LEC JOB # H061.0229M				

323 W. 3RD ST.
P.O. BOX 160
MT. CARMEL, IL
62863
PHONE: (618)-262-8651
FAX: (618)-263-3327

405 W. STATE ST
SUITE 1
PRINCETON, IN
47670
PHONE: (812)-386-7611
FAX: (812)-385-2812

LAMAC
ENGINEERING CO.

PROFESSIONAL
DESIGN FIRM
LAND SURVEY &
PROFESSIONAL
ENGINEERING
CORPORATION
184-00087
(62-032435)(35-002769)

AARON M. MEFFORD
NAME
Aaron M. Mefford
SIGNATURE
3/17/09
DATE
11-30-09
EXPIRES

56284
REGISTERED
PROFESSIONAL
ENGINEER
OF
ILLINOIS

F.A.S. 881 (CH 6)
CORNERVILLE ROAD
SECTION 05-00094-00-FP
HAMILTON COUNTY, ILLINOIS

SHEET TITLE:
GEN NOTES
MISC DETAILS

SCALE: VARIES

BY: AMM
DATE: 3/10/09
REV:

1 OF 32
SHEETS

SHEET NO.
1