

STATE OF ILLINOIS
DEPARTMENT OF TRANSPORTATION
DIVISION OF HIGHWAYS

PLANS FOR PROPOSED
HIGHWAY BRIDGE PROGRAM

PROJECT BROS-065(050)
SECTION 07-08126-00-BR
McLEANSBORO ROAD DISTRICT
HAMILTON COUNTY

T.R. 200
PROPOSED STRUCTURE NO. 033-3308
JOB C-99-525-08

INDEX OF SHEETS

SHEET NO. DESCRIPTION

- 1. COVER SHEET & SUMMARY OF QUANTITIES
- 2. PLAN AND PROFILE & TYPICAL SECTIONS
- 3.-4. STATION CROSS SECTIONS
- 5.-12. BRIDGE PLANS
- 13. BORINGS

HIGHWAY STANDARDS:

- 280001-04 TEMPORARY EROSION CONTROL SYSTEMS
- 515001-03 NAME PLATE FOR BRIDGES
- 701901-01 TRAFFIC CONTROL DEVICES
- BLR 21-8 TYPICAL APPLICATION OF TRAFFIC CONTROL DEVICES FOR CONSTRUCTION ON RURAL LOCAL HIGHWAYS
- BLR 22-6 TYPICAL APPLICATION OF TRAFFIC CONTROL DEVICES FOR CONSTRUCTION ON RURAL LOCAL HIGHWAYS (TWO-LANE TWO-WAY RURAL TRAFFIC) (ROAD CLOSED TO THRU TRAFFIC)
- BLR 23-3 TRAFFIC BARRIER TERMINAL, TYPE 1
- BLR 27-1 TRAFFIC BARRIER TERMINAL, TYPE 5A

SUMMARY OF QUANTITIES

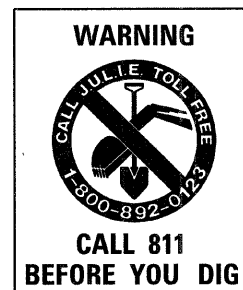
CODE NO.	ITEM	UNIT	QUANTITY
20100500	TREE REMOVAL, ACRES	ACRE	0.4
20200100	EARTH EXCAVATION	CU YD	452
20300100	CHANNEL EXCAVATION	CU YD	333
20400800	FURNISHED EXCAVATION	CU YD	2,460
> 25001000	SEEDING, CLASS 2 (SPECIAL)	ACRE	0.6
28000300	TEMPORARY DITCH CHECKS	EACH	5
> 28001000	AGGREGATE (EROSION CONTROL)	TON	18
28100807	STONE DUMPED RIPRAP, CLASS A4	TON	350
28102600	STONE RIPRAP DITCH	TON	105
40200800	AGGREGATE SURFACE COURSE, TYPE B	TON	375
50100100	REMOVAL OF EXISTING STRUCTURES	EACH	1
50300225	CONCRETE STRUCTURES	CU YD	30.0
50300280	CONCRETE ENCASEMENT	CU YD	3.4
50400605	PRECAST PRESTRESSED CONCRETE DECK BEAMS (33" DEPTH)	SQ FT	1,920
50800105	REINFORCEMENT BARS	POLIND	3,600
* 50900205	STEEL RAILING, TYPE S1	FOOT	161
51201600	FURNISHING STEEL PILES HP12X53	FOOT	210
51202305	DRIVING PILES	FOOT	125
51500100	NAME PLATES	EACH	1
54200220	PIPE CULVERTS, CLASS D TYPE 1 15"	FOOT	90
* 63100075	TRAFFIC BARRIER TERMINAL, TYPE 5A	EACH	2
67100100	MOBILIZATION	L SUM	1
* > LR631020	TRAFFIC BARRIER TERMINAL, TYPE 1	EACH	2
> 70065000	SETTING PILES IN ROCK	EACH	5

> SEE SPECIAL PROVISIONS
* SPECIALTY ITEMS

CONTRACT NO. 99356

HAMILTON COUNTY

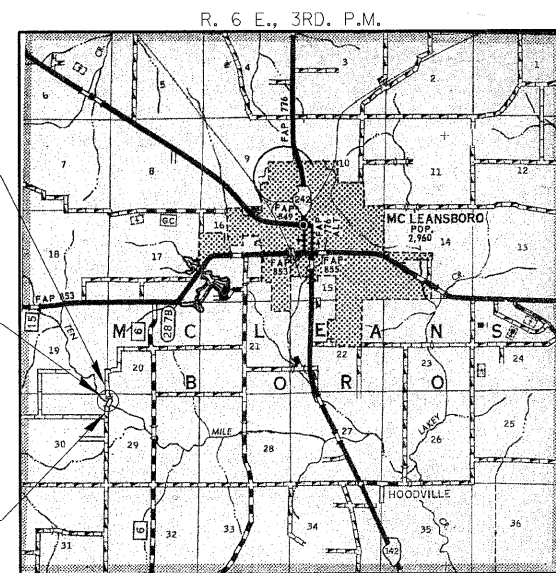
SECTION 07-08126-00-BR



IMPROVEMENT ENDS
STATION 8+70

STA. 5+00
PRECAST PRESTRESSED CONCRETE DECK BEAM
BRIDGE, SINGLE SPAN 80'-0"
24'-0" RDWY.; SKEW = 30°; S.E. = 2.0%
EXISTING STRUCTURE NO. 033-3075
PROPOSED STRUCTURE NO. 033-3308

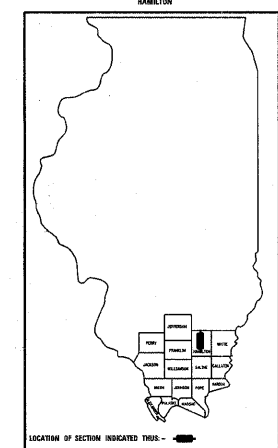
IMPROVEMENT BEGINS
STATION 2+20



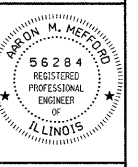
LOCATION MAP

APPROXIMATE SCALE: 0 1 MILE
NET LENGTH OF SECTION = 650 FEET = 0.123 MILES

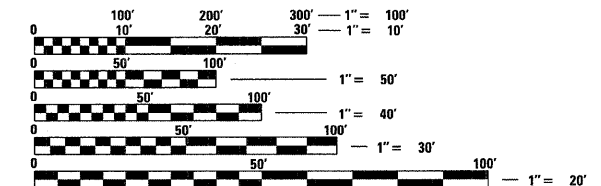
T.R.	SECTION	COUNTY	TOTAL SHEETS	SHEET NO.
200	07-08126-00-BR	HAMILTON	13	1
FED. ROAD DIST. NO. ILLINOIS		FED. AID PROJECT		PHONE:
PROJECT# BROS-065(050)		CONTRACT# 99356		(618)-262-8651
JOB #C-99-525-08		McLEANSBORO R.D.		FAX:
LEC JOB # H0812608M				(618)-263-3327



PROFESSIONAL DESIGN FIRM
LAND SURVEY & PROFESSIONAL ENGINEERING CORPORATION
184-00087
(62-03243)(35-002769)



AARON M. MEFFORD
NAME
SIGNATURE
1-23-09
DATE
11-30-09
EXPIRES



FULL SIZE PLANS HAVE BEEN PREPARED USING STANDARD ENGINEERING SCALES. REDUCED SIZED PLANS WILL NOT CONFORM TO STANDARD SCALES. IN MAKING MEASUREMENTS ON REDUCED PLANS, THE ABOVE SCALES MAY BE USED.

HAMILTON COUNTY

APPROVED January 27, 20 09
Rini Blith
COUNTY ENGINEER

APPROVED Robert Drake 20 09
Feb 3
TOWNSHIP COMMISSIONER

PASSED March 13, 20 09
Robert W. Halder
DISTRICT NINE ENGINEER OF LOCAL ROADS & STREETS

Releasing For Bid Based on Limited Review
March 13, 20 09
Mary C. Lami
DEPUTY DIRECTOR OF HIGHWAYS
REGION FIVE ENGINEER
STATE OF ILLINOIS
DEPARTMENT OF TRANSPORTATION

MCLEANSBORO TOWNSHIP
OVER TEN MILE CREEK
HAMILTON COUNTY, ILLINOIS

SHEET TITLE:

TITLE SHEET

SCALE: VARIES

BY: AMM

DATE: 2/10/09

REV:

1 OF 13 SHEETS

SHEET NO. 1

PROJECT NUMBER: 08, 0103, 130 DATE: 01/21/09

HAMPTON, LENZINI & RENWICK, INC.
CIVIL & STRUCTURAL ENGINEERS
LAND SURVEYORS

3085 STEVENSON DRIVE, SUITE 201
SPRINGFIELD, ILLINOIS 62703
(217) 546-3400

ELGIN • SPRINGFIELD