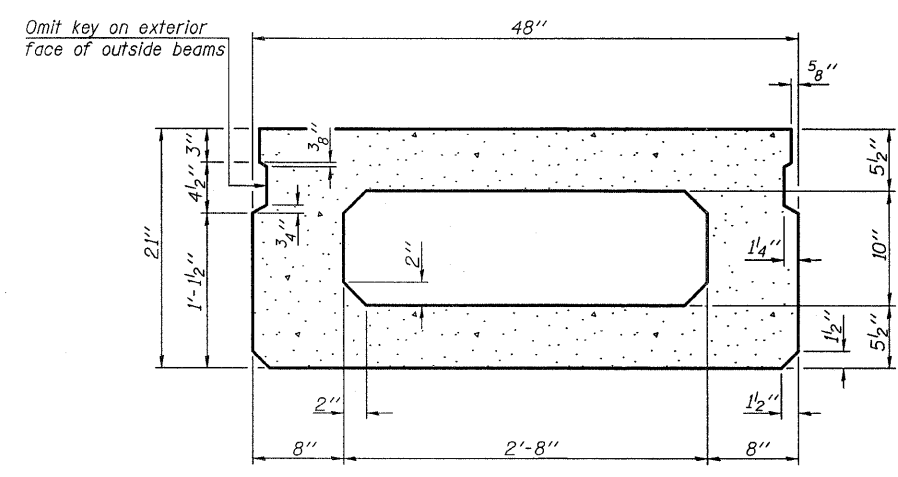
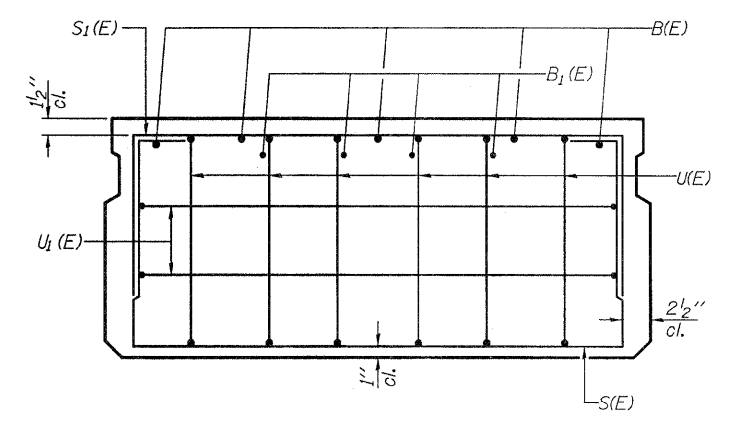


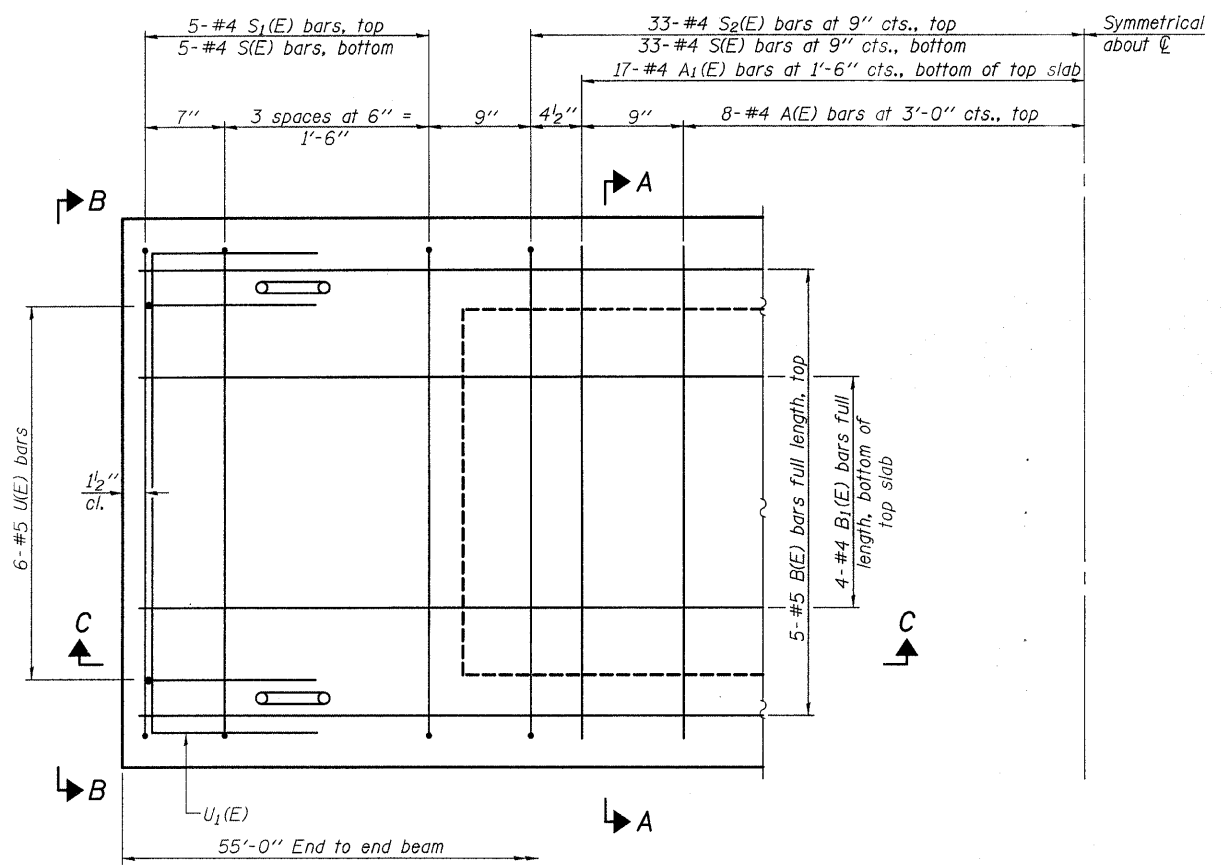
**SECTION C-C**



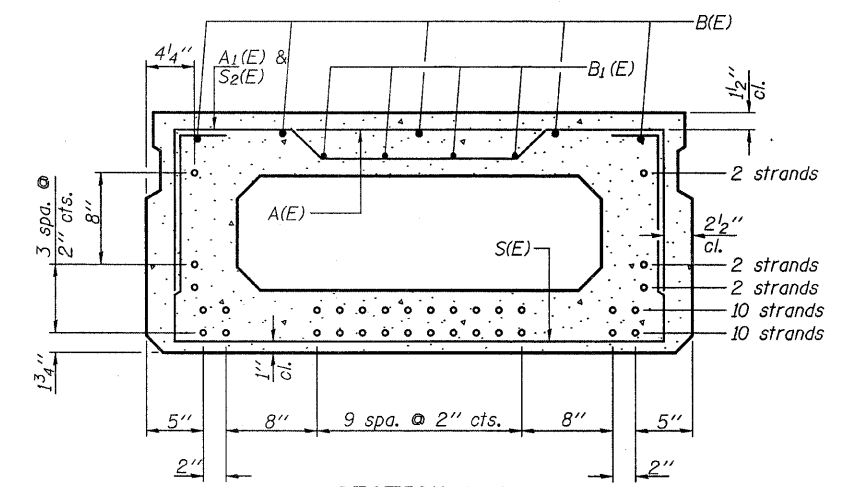
**SECTION A-A**  
(Showing dimensions)



**VIEW B-B**



**PLAN VIEW**



**SECTION A-A**  
(Showing reinforcement and permissible strand locations)  
Note: Place the number of strands specified in each row symmetrically about the centerline of beam in the permissible strand locations shown.

**BAR LIST**  
**ONE BEAM ONLY**  
(For Information Only)

Bar	No.	Size	Length	Shape
A(E)	16	#4	3'-7"	—
A1(E)	34	#4	3'-10"	—
B(E)	5	#5	54'-8"	—
B1(E)	4	#4	54'-8"	—
S(E)	76	#4	7'-5"	□
S1(E)	10	#4	5'-11"	□
S2(E)	66	#4	6'-2"	□
U1(E)	12	#5	4'-0"	□
U1(E)	4	#4	6'-0"	□

Note: See sheet 3 & 4 of 9 for additional details and Bill of Material.

Note: Spacing of S(E) and S2(E) bars may be adjusted up to 4" in the immediate area of the transverse tie diaphragms to miss the block outs for the transverse ties.

DESIGNED - S.M.S.
CHECKED - S.W.M.
DRAWN - D.T.M.
CHECKED - D.A.B.

PD-2148-0 10-1-08

**HAMPTON, LENZINI & RENWICK, INC.**  
CIVIL & STRUCTURAL ENGINEERS  
LAND SURVEYORS  
**HLR** 3085 STEVENSON DRIVE, SUITE 201  
SPRINGFIELD, ILLINOIS 62703  
(217) 548-3400

SHEET NO. 2	T.R.	SECTION	COUNTY	TOTAL SHEETS	SHEET NO.
	125	06-09121-00-BR	WHITE	13	6
9 SHEETS	MILL SHOALS ROAD DISTRICT		CONTRACT NO. 99371		
	FED. ROAD DIST. NO.	ILLINOIS	FED. AID PROJECT BROS-193(27)		

**SUPERSTRUCTURE**  
**21" X 48" PPC DECK BEAM**  
**STRUCTURE NO. 097-3252**