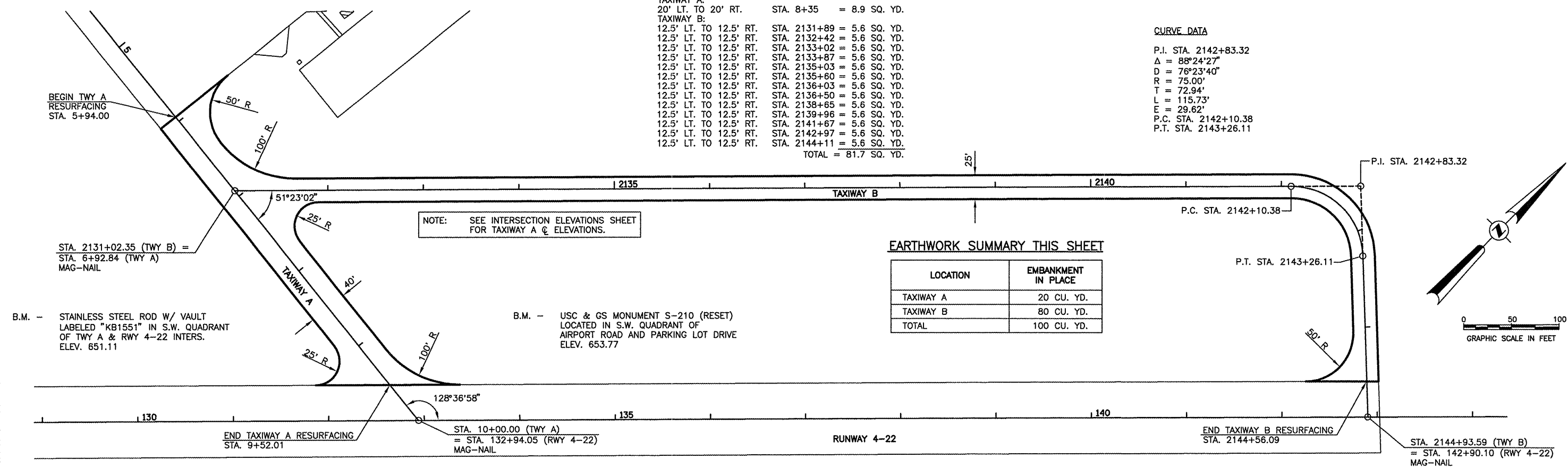


BASE COURSE CRACK REPAIR

TAXIWAY A:		
20' LT. TO 20' RT.	STA. 8+35	= 8.9 SQ. YD.
TAXIWAY B:		
12.5' LT. TO 12.5' RT.	STA. 2131+89	= 5.6 SQ. YD.
12.5' LT. TO 12.5' RT.	STA. 2132+42	= 5.6 SQ. YD.
12.5' LT. TO 12.5' RT.	STA. 2133+02	= 5.6 SQ. YD.
12.5' LT. TO 12.5' RT.	STA. 2133+87	= 5.6 SQ. YD.
12.5' LT. TO 12.5' RT.	STA. 2135+03	= 5.6 SQ. YD.
12.5' LT. TO 12.5' RT.	STA. 2135+60	= 5.6 SQ. YD.
12.5' LT. TO 12.5' RT.	STA. 2136+03	= 5.6 SQ. YD.
12.5' LT. TO 12.5' RT.	STA. 2136+50	= 5.6 SQ. YD.
12.5' LT. TO 12.5' RT.	STA. 2138+65	= 5.6 SQ. YD.
12.5' LT. TO 12.5' RT.	STA. 2139+96	= 5.6 SQ. YD.
12.5' LT. TO 12.5' RT.	STA. 2141+67	= 5.6 SQ. YD.
12.5' LT. TO 12.5' RT.	STA. 2142+97	= 5.6 SQ. YD.
12.5' LT. TO 12.5' RT.	STA. 2144+11	= 5.6 SQ. YD.
TOTAL		= 81.7 SQ. YD.

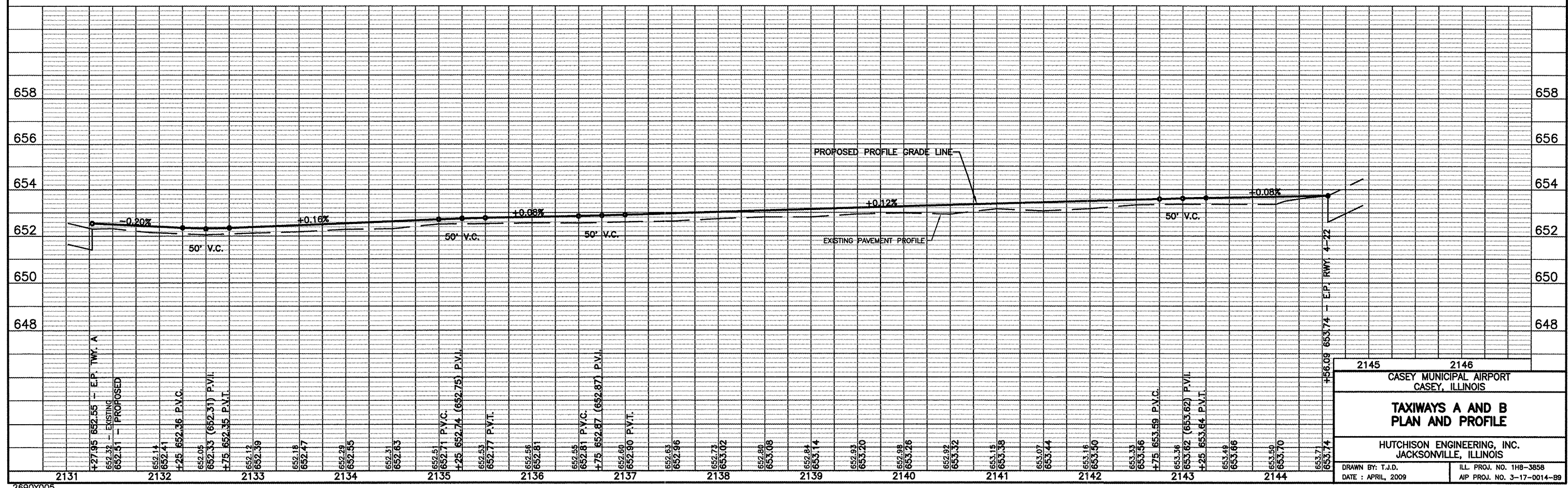
CURVE DATA

P.I. STA. 2142+83.32
 Δ = 88°24'27"
 D = 76°23'40"
 R = 75.00'
 T = 72.94'
 L = 115.73'
 E = 29.62'
 P.C. STA. 2142+10.38
 P.T. STA. 2143+26.11



EARTHWORK SUMMARY THIS SHEET

LOCATION	EMBANKMENT IN PLACE
TAXIWAY A	20 CU. YD.
TAXIWAY B	80 CU. YD.
TOTAL	100 CU. YD.



2145 2146

CASEY MUNICIPAL AIRPORT
 CASEY, ILLINOIS

**TAXIWAYS A AND B
 PLAN AND PROFILE**

HUTCHISON ENGINEERING, INC.
 JACKSONVILLE, ILLINOIS

DRAWN BY: T.J.D. ILL. PROJ. NO. 1HB-3858
 DATE: APRIL, 2009 AIP PROJ. NO. 3-17-0014-89