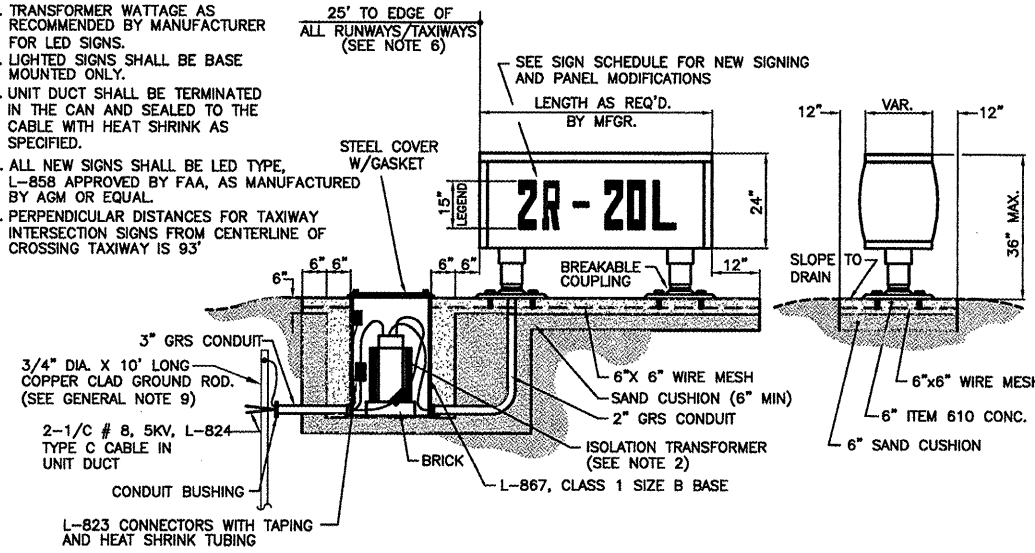


**NOTES**

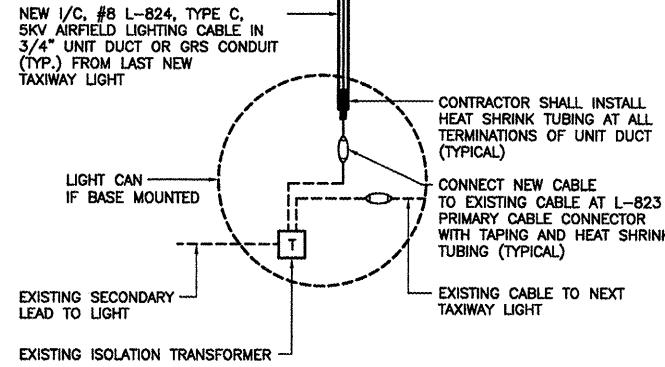
1. ALL SIGNS ARE 2 - SIDED SIGNS.
2. TRANSFORMER WATTAGE AS RECOMMENDED BY MANUFACTURER FOR LED SIGNS.
3. LIGHTED SIGNS SHALL BE BASE MOUNTED ONLY.
4. UNIT DUCT SHALL BE TERMINATED IN THE CAN AND SEALED TO THE CABLE WITH HEAT SHRINK AS SPECIFIED.
5. ALL NEW SIGNS SHALL BE LED TYPE, L-858 APPROVED BY FAA, AS MANUFACTURED BY AGM OR EQUAL.
6. PERPENDICULAR DISTANCES FOR TAXIWAY INTERSECTION SIGNS FROM CENTERLINE OF CROSSING TAXIWAY IS 93'



**HOLD LINE/TAXIWAY GUIDANCE SIGN LED L-858, SIZE 2, STYLE 2, CLASS 2**

NOT TO SCALE

CONTRACTOR SHALL SUBMIT DETAILED SHOP DRAWING INCLUDING SIGN, COLOR, SIZE, PROPOSED LEGEND, IN ENOUGH DETAIL AND DETERMINE NEW SPACING AND OTHER INFORMATION REQUIRED BY SPECIAL PROVISIONS. CONTRACTOR TO VERIFY NEW SIGN LOCATIONS AND ORIENTATIONS WITH RESIDENT ENGINEER PRIOR TO INSTALLATION. SIGN SHALL BE FAA APPROVED LED TYPE SIGN.

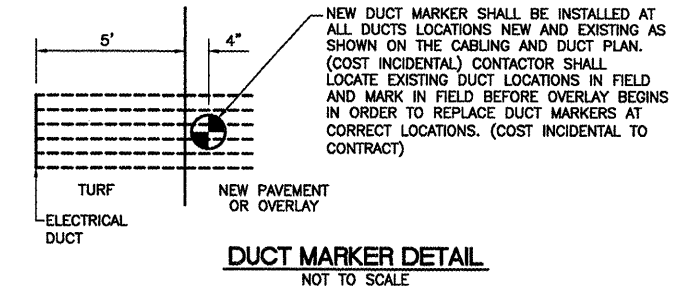
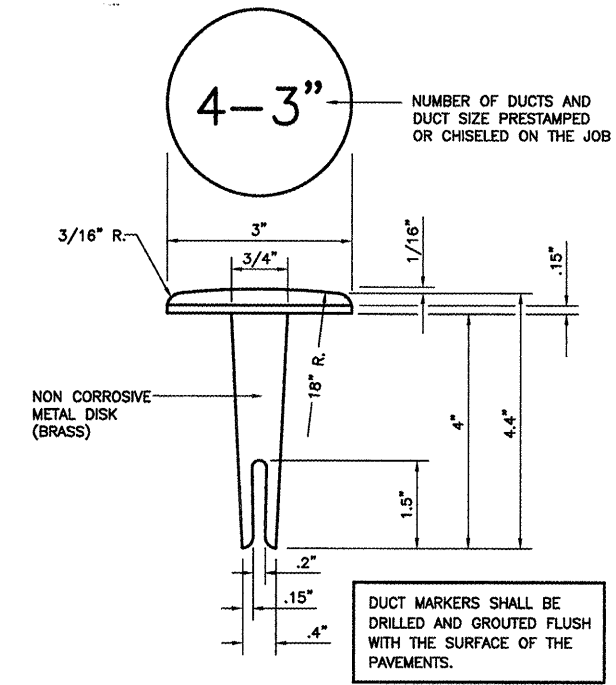


**RUNWAY/TAXIWAY LIGHTING CIRCUIT CONNECTION DETAIL**

NOT TO SCALE

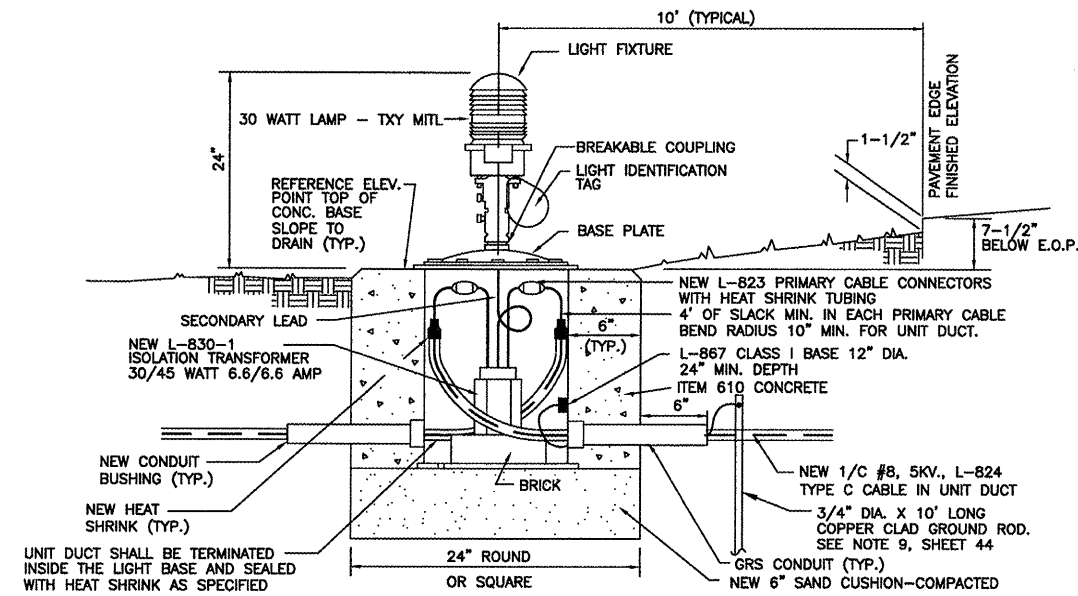
**GENERAL NOTES:**

1. THE CONCRETE BASE FOR BASE MTD. LIGHTS AND SIGNS SHALL BE TROWEL FINISHED WITH A 45° BEVELED EDGE. SLOPE TO DRAIN (610).
2. TRANSFORMER HOLDER SHALL BE ANY COMMERCIALY AVAILABLE BRICK.
3. BREAKING GROOVE COUPLINGS SHALL NOT BE OVER 1" ABOVE GROUND LINE.
4. ISOLATION TRANSFORMERS COME WITH A FACTORY INSTALLED PLUG (TYPE 1, CLASS A, STYLE 2) AND RECEPTACLE (TYPE 1, CLASS A, STYLE 9). A TYPE 1, CLASS B, STYLE 3 PLUG AND TYPE 1, CLASS B, STYLE 10 RECEPTACLE SHALL BE INSTALLED ON THE 1/C, No. 8, 5000 V., L-824 TYPE C CABLES FOR CONNECTION TO EACH TRANSFORMER.
5. TO FURTHER REDUCE THE POSSIBILITY OF WATER/MOISTURE ENTRANCE INTO THE CONNECTOR BETWEEN THE CABLE AND THE FIELD ATTACHED CONNECTOR, IT IS REQUIRED THAT A HEAT SHRINKABLE TUBING WITH INTERNAL ADHESIVE BE APPLIED OVER THE ENTIRE CABLE CONNECTOR.
6. ALL SIGNS, LIGHTS, CABLES AND TRANSFORMERS TO BE REMOVED SHALL REMAIN THE PROPERTY OF THE AIRPORT. AT THE DISCRETION OF THE AIRPORT DIRECTOR, THE CONTRACTOR MAY BE REQUIRED TO DISPOSE OF THESE MATERIALS OFFSITE.
7. CONTRACTOR SHALL HAVE THE OPTION TO TRENCH OR PLOW UNIT DUCT. NO ADDITIONAL PAYMENT SHALL BE MADE FOR TRENCHING.
8. ALL RUNWAY/TAXIWAY EDGE LIGHTS SHALL HAVE 2" DIA. COLUMN AND FRANGIBLE COUPLINGS, UNLESS NOTED OTHERWISE.



**DUCT MARKER DETAIL**

NOT TO SCALE

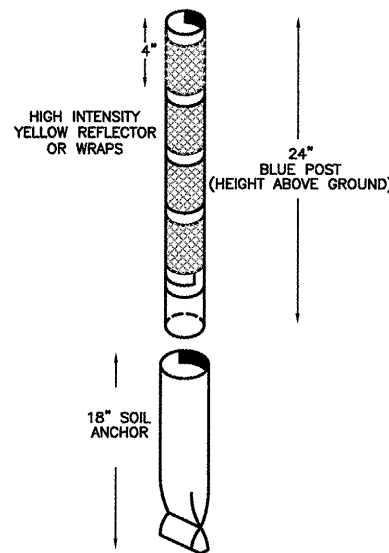


**NEW BASE MOUNTED MEDIUM INTENSITY TAXIWAY LIGHT**

NOT TO SCALE

**NOTES**

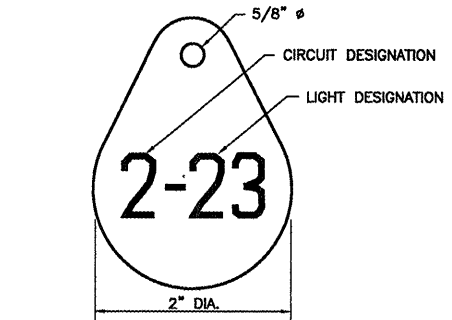
1. BASE MOUNTED MITLS THAT ARE WITHIN THE LIMITS OF THE NEW PAVED SHOULDER PAVEMENT SHALL FOLLOW THE BASE MOUNTED HIRL DETAIL.



**TAXIWAY RETROREFLECTIVE MARKER DETAIL**

NOT TO SCALE

NOTE: RETROREFLECTIVE MARKER SHALL BE UNIPAR, INC. EVAFLEX OR APPROVED EQUAL.



**LIGHT IDENTIFICATION DETAIL**

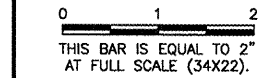
NOT TO SCALE

**NOTES:**

1. INSTALL A NONCORROSIVE DISC OF 2" MINIMUM DIAMETER WITH THE NUMBER PERMANENTLY STAMPED, CUT OUT, OR ENGRAVED UNDER THE HEAD OF THE BASE PLATE BOLT OR ATTACHED TO LIGHT FLANGE WITH A SET SCREW.
2. NUMERALS SHOWN ARE FOR ILLUSTRATIVE PURPOSES ONLY. ALL EXISTING AND NEW TAXIWAY LIGHTS SHALL BE TAGGED AS DIRECTED BY THE RESIDENT ENGINEER. ALL LIGHTS ON EXISTING CIRCUITS THAT HAVE LIGHTING IMPROVEMENTS (NEW OR RELOCATED LIGHTS) SHALL BE RETAGGED.
3. COST OF TAGGING LIGHTS SHALL NOT BE PAID FOR SEPARATELY BUT SHALL BE CONSIDERED INCIDENTAL TO THE CONTRACT.

**REVISIONS**

NUMBER	BY	DATE
1	DLP	03/07/06



**DUPAGE AIRPORT**  
**WEST CHICAGO, ILLINOIS**  
**SOUTH FLIGHT CENTER APRON - PHASE 4**

**ELECTRICAL DETAILS**  
**SHEET 1**

Copyright, CMT, Inc.

**CMT**  
 CRAWFORD, MURPHY & TILLY, INC.  
 CONSULTING ENGINEERS  
 License No. 184-000613



DESIGN BY:	AB
DRAWN BY:	JRO
CHECKED BY:	AB
APPROVED BY:	MJS
DATE:	01/30/09
JOB No:	04257-04-00-00
A.I.P. PROJECT:	3-17-0017-B18
ILLINOIS PROJECT:	DPA-3391
SHEET	20 OF 31 SHEETS