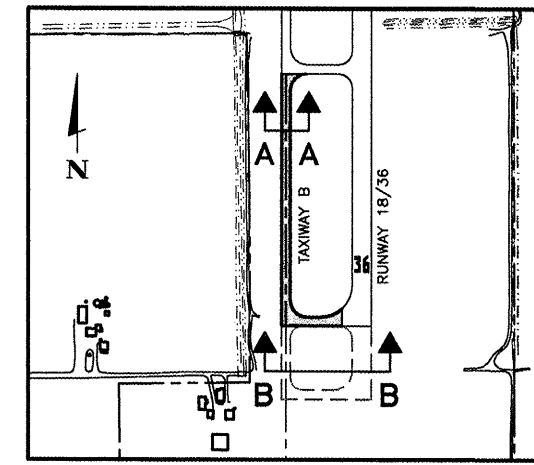


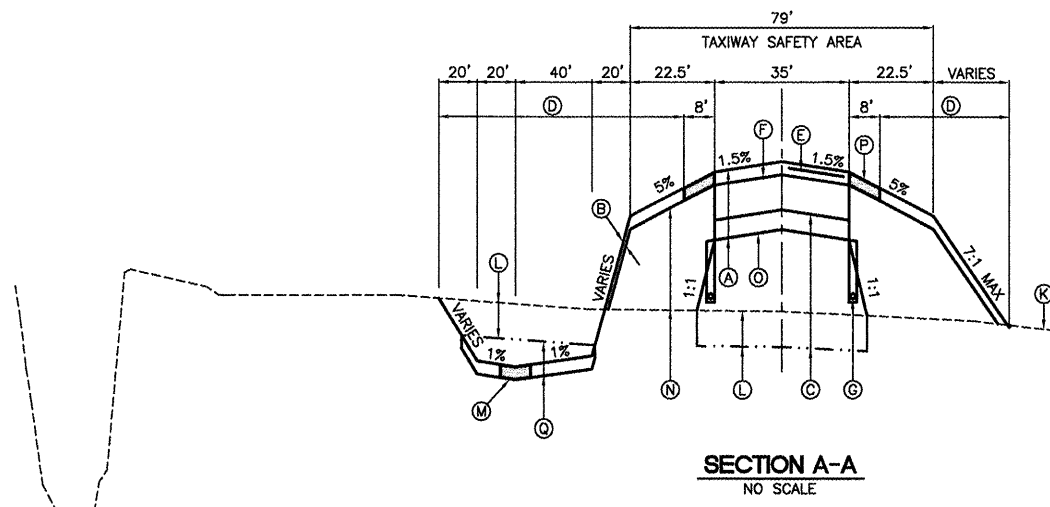
REVISIONS

NUMBER	BY	DATE

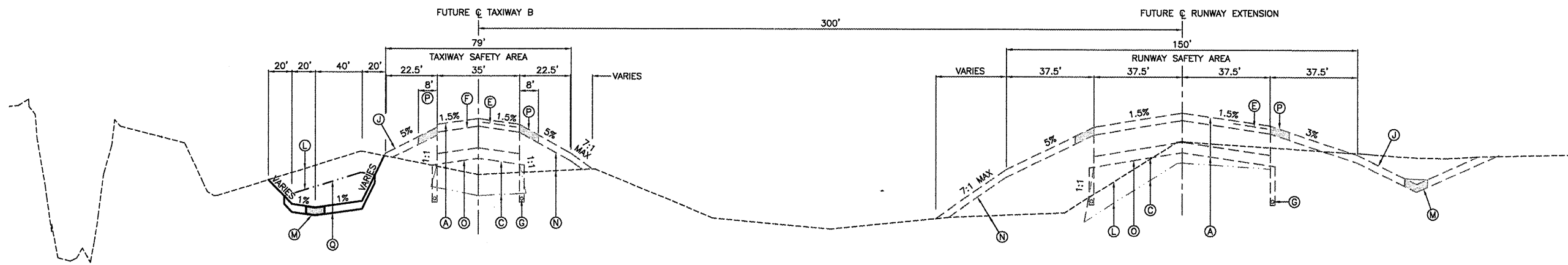
0 1 2  
 THIS BAR IS EQUAL TO 2" AT FULL SCALE (34X22).



KEY MAP



SECTION A-A  
 NO SCALE



SECTION B-B  
 NO SCALE

LANSING MUNICIPAL AIRPORT  
 LANSING, ILLINOIS  
 PARTIAL PARALLEL TAXIWAY TO RUNWAY 18/36

TYPICAL SECTIONS

© Copyright CMT, Inc.

**CMT**  
 CRAWFORD, MURPHY & TULLY, INC.  
 CONSULTING ENGINEERS  
 License No. 184-000618

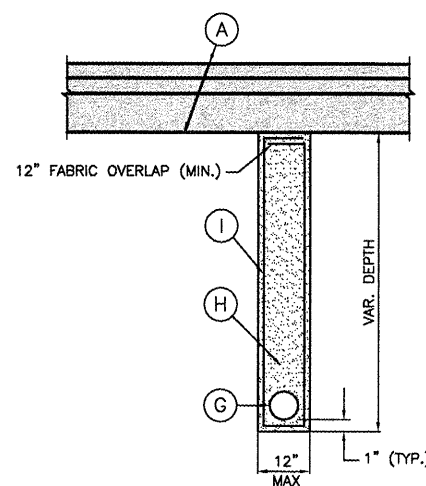


DESIGN BY:	ARM
DRAWN BY:	JRO
CHECKED BY:	ARM
APPROVED BY:	ARM
DATE:	02/27/09
JOB No:	05297-02

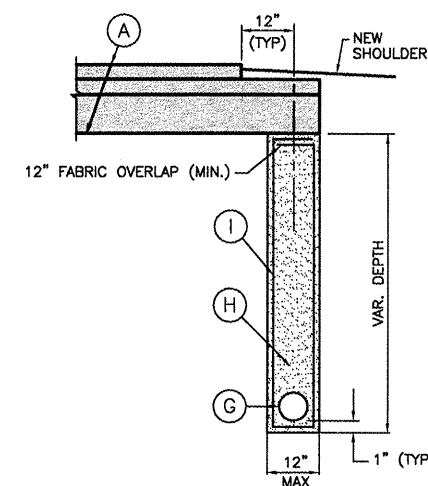
IL PROJECT: IGQ-3681  
 A.I.P. PROJECT: 3-17-0121-B26

LEGEND

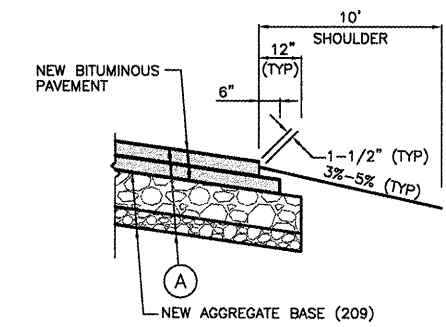
- (A) NEW TAXIWAY PAVEMENT STRUCTURE  
 1.5" BITUMINOUS SURFACE COURSE (401)  
 2.5" BITUMINOUS BASE COURSE (201)  
 11" CRUSHED AGGREGATE BASE COURSE (209)  
 6" POROUS GRANULAR EMBANKMENT (208)
- (B) NEW TOPSOIL PLACEMENT (4' MIN.)(905)
- (C) NEW EMBANKMENT FILL (152)
- (D) NEW SEEDING AND MULCHING (901 AND 908)
- (E) NEW TACK COAT (603)
- (F) NEW PRIME COAT (602)
- (G) NEW 6" C.P.P.U.P. W/ SOCK (705)
- (H) NEW POROUS BACKFILL (705) COST INCIDENTAL TO PROPOSED UNDERDRAIN
- (I) NEW UNDERDRAIN TRENCH FABRIC ENVELOPE (705) COST INCIDENTAL TO UNDERDRAIN
- (J) NEW GROUNDLINE
- (K) EXISTING GROUNDLINE
- (L) NEW 12" AVERAGE TOPSOIL STRIPPING (152)
- (M) NEW 16' WIDE EROSION CONTROL BLANKET (156)
- (N) NEW SHOULDER FILL (152)
- (O) NEW SOIL STABILIZATION FABRIC (152)
- (P) NEW 8' WIDE EROSION CONTROL BLANKET (156)
- (Q) NEW UNCLASSIFIED EXCAVATION (152)



UNDERDRAIN DETAIL - PAVED AREAS  
 NO SCALE



UNDERDRAIN DETAIL -  
 EDGE OF PAVEMENT AREAS  
 NO SCALE



AIRFIELD PAVEMENT EDGE DETAIL  
 NO SCALE