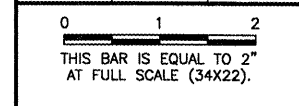


REVISIONS

NUMBER	BY	DATE



LANSING MUNICIPAL AIRPORT
 LANSING, ILLINOIS
 PARTIAL PARALLEL TAXIWAY TO RUNWAY 18/36

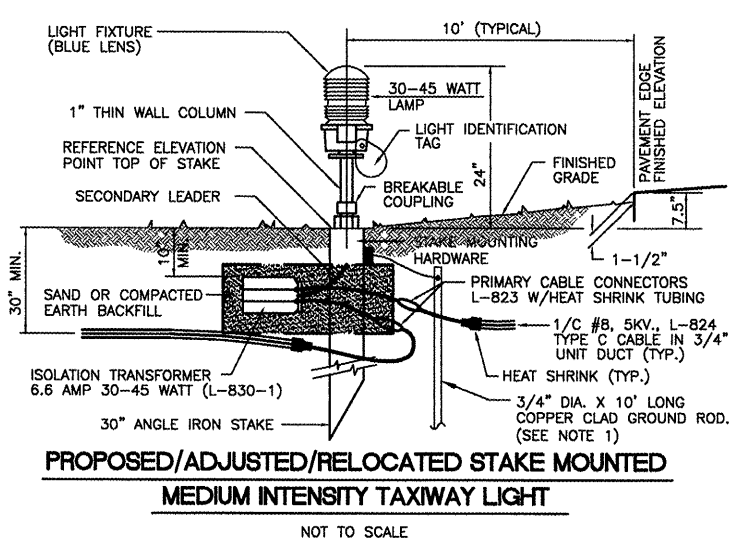
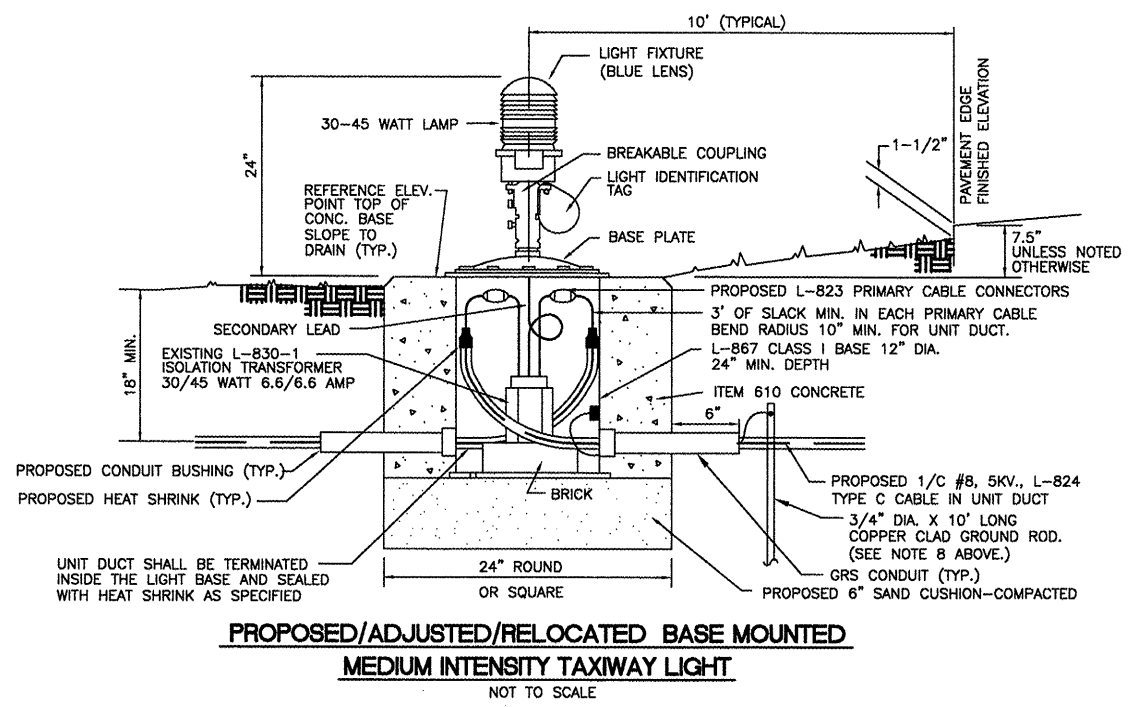
ELECTRICAL DETAILS - SHEET 2

© Copyright CMT, Inc.

CMT
 CRAVENS, MURPHY & TILLY, INC.
 CONSULTING ENGINEERS
 License No. 84-006618

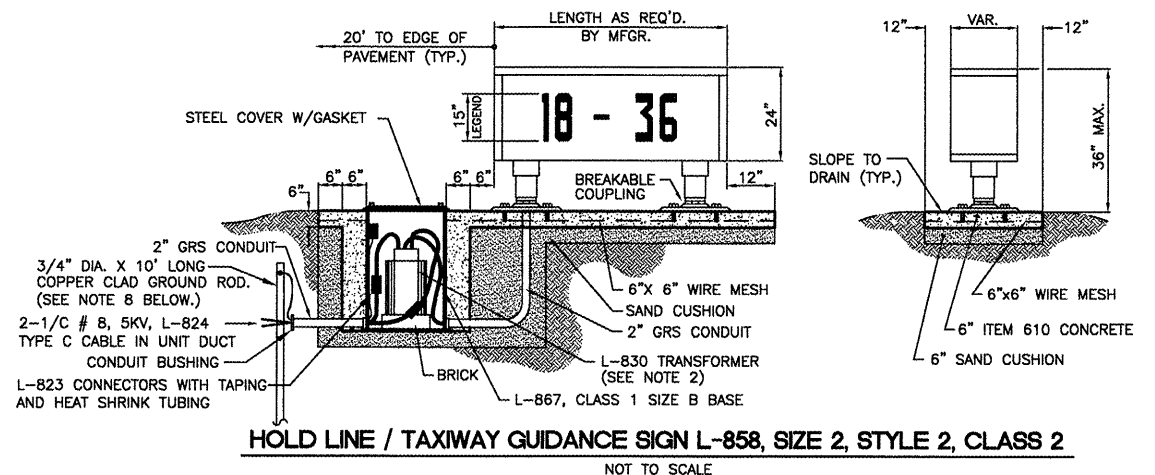


DESIGN BY:	ARM
DRAWN BY:	JRO
CHECKED BY:	ARM
APPROVED BY:	ARM
DATE:	02/27/09
JOB No:	05297-02
IL PROJECT:	IGQ-3681
A.I.P. PROJECT:	3-17-0121-B26
SHEET	14 OF 30 SHEETS



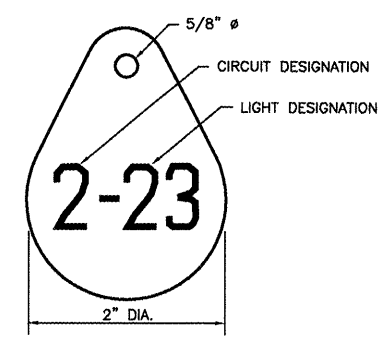
GENERAL NOTES:

- INSTALL 1/2 #6 AWG BARE COPPER GROUND JUMPER CONNECTED TO GROUND LUG INSIDE BASE CAN AND EXOTHERMICALLY WELDED TO GROUND ROD.



SIGNAGE NOTES

- ALL SIGNS ARE LUMACURVE 2-SIDED SIGNS BY STANDARD SIGNS OR APPROVED EQUAL.
- TRANSFORMER WATTAGE AS RECOMMENDED BY MANUFACTURER.
- LIGHTED SIGNS SHALL BE BASE MOUNTED ONLY.
- UNIT DUCT SHALL BE TERMINATED IN THE CAN AND SEALED TO THE CABLE WITH HEAT SHRINK AS SPECIFIED.
- THE NUMBER OF MODULES PER SIGN SHALL BE AS RECOMMENDED BY THE MANUFACTURER.
- CONTRACTOR SHALL SUBMIT DETAILED SHOP DRAWING INCLUDING SIGN, COLOR, SIZE AND PROPOSED LEGEND, IN ENOUGH DETAIL AND DETERMINE PROPOSED SPACING AND OTHER INFORMATION REQUIRED BY SPECIAL PROVISIONS. CONTRACTOR TO VERIFY PROPOSED SIGN LOCATIONS AND ORIENTATIONS WITH RESIDENT ENGINEER PRIOR TO INSTALLATION.
- WHEN EXISTING SIGNS ARE PROPOSED TO BE RETROFITTED WITH NEW SIGN PANELS, THE SIGN PANELS SHALL CONFORM TO THE APPLICABLE REQUIREMENTS OF ADVISORY CIRCULAR 150/5340-18 (LATEST EDITION). THE CONTRACTOR SHALL VERIFY THAT THE PROPOSED SIGN PANELS ARE COMPATIBLE WITH THE EXISTING SIGN ASSEMBLIES WHICH ARE LUMACURVE BY STANDARD SIGNS.
- INSTALL 1/2 #6 AWG BARE COPPER GROUND JUMPER CONNECTED TO GROUND LUG INSIDE BASE CAN AND EXOTHERMICALLY WELDED TO GROUND ROD.



LIGHT IDENTIFICATION DETAIL

NOTES:

- INSTALL A NONCORROSIVE DISC OF 2" MINIMUM DIAMETER WITH THE NUMBER PERMANENTLY STAMPED, CUT OUT, OR ENGRAVED UNDER THE HEAD OF THE BASE PLATE BOLT OR ATTACHED TO LIGHT FLANGE WITH A SET SCREW.
- NUMERALS SHOWN ARE FOR ILLUSTRATIVE PURPOSES ONLY. ALL EXISTING AND PROPOSED TAXIWAY AND RUNWAY LIGHTS SHALL BE TAGGED AS DIRECTED BY THE RESIDENT ENGINEER. ALL LIGHTS ON EXISTING CIRCUITS THAT HAVE LIGHTING IMPROVEMENTS (PROPOSED OR RELOCATED LIGHTS) SHALL BE RETAGGED.
- COST OF TAGGING LIGHTS SHALL NOT BE PAID FOR SEPARATELY BUT SHALL BE CONSIDERED INCIDENTAL TO THE CONTRACT.