

LA038

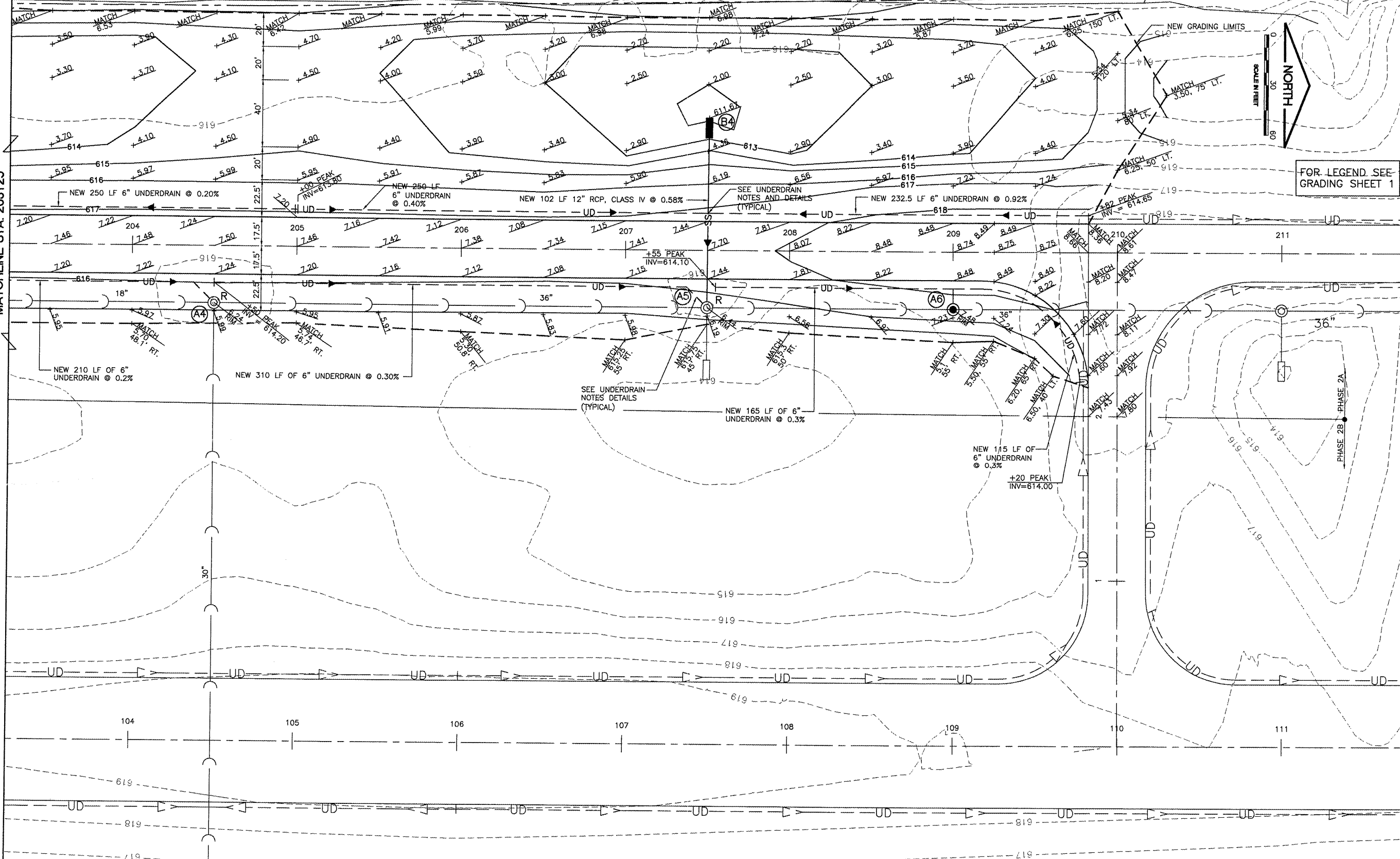
FILE: 16-grade & Drain2.dwg  
LAYOUT: Layout 1  
UPDATE BY: Tony Marin  
SURVEY BOOK #  
DATE: Friday, February 27, 2009 3:11:24 PM  
XREF DWG: Base-ty.dwg  
tbcint.dwg  
tb.dwg  
e-topo.dwg

REVISIONS

NUMBER	BY	DATE

0 1 2  
THIS BAR IS EQUAL TO 2"  
AT FULL SCALE (34X22).

MATCHLINE STA. 203+25



FOR LEGEND SEE GRADING SHEET 1

LANSING MUNICIPAL AIRPORT  
LANSING, ILLINOIS  
PARTIAL PARALLEL TAXIWAY TO RUNWAY 18/36

GRADING AND DRAINAGE PLAN -  
SHEET 2

© Copyright CMT, Inc.

**CMT**  
CRAWFORD, MURPHY & TILLY, INC.  
CONSULTING ENGINEERS  
License No. BA-000513



DESIGN BY:	ARM
DRAWN BY:	JRO
CHECKED BY:	ARM
APPROVED BY:	ARM
DATE:	02/27/09
JOB No:	05297-02
IL PROJECT: IGO-3681 A.I.P. PROJECT: 3-17-0121-B26	
SHEET 16 OF 30 SHEETS	