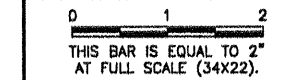


- LEGEND**
- DRAINAGE CONDUIT MATERIAL-CONCRETE
 - MIDDLE BEDDING LOOSELY PLACED UNCOMPACTED BEDDING
 - HAUNCH AND OUTER BEDDING COMPACTION- TO ENGINEER'S SATISFACTION OR 95% STANDARD PROCTOR
 - LOWER SIDE AND OVERFILL COMPACTION- SAME AS EMBANKMENT REQUIREMENTS
- D_o PIPE OUTSIDE DIAMETER
 D_i PIPE INSIDE DIAMETER

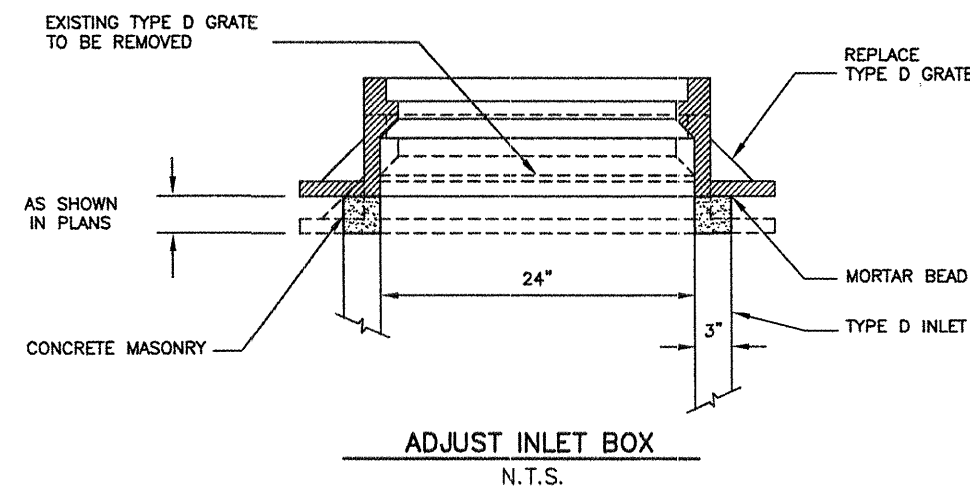
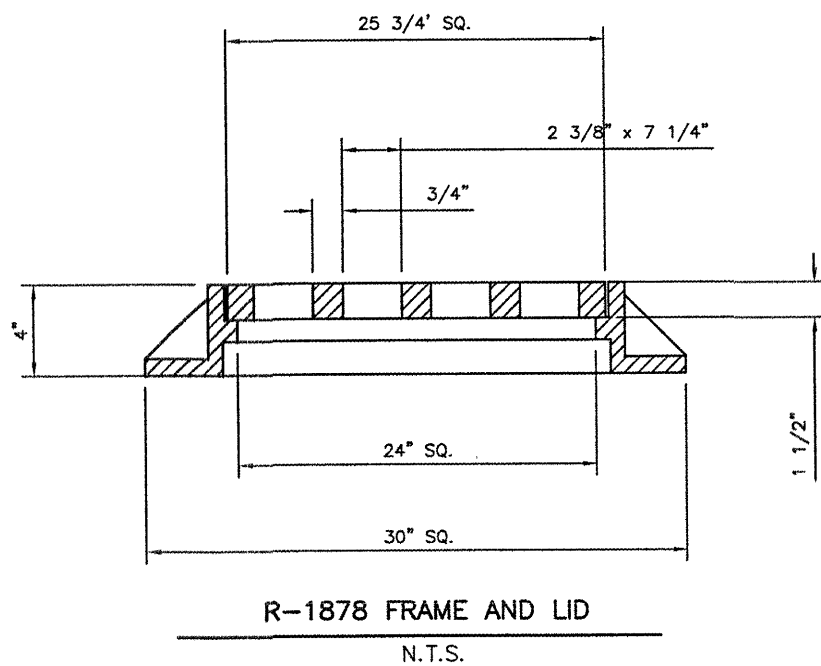
- NOTES**
1. BEDDING SHOWN IS IN ACCORDANCE WITH "STANDARD EMBANKMENT INSTALLATIONS", STANDARD INSTALLATION & BEDDING FACTORS FOR THE INDIRECT DESIGN METHOD (DESIGN DATA 40), AMERICAN CONCRETE PIPE ASSOCIATION.
 2. BACKFILL TO EXTEND 3' BEYOND EDGES OF PROPOSED PAVEMENT.

REVISIONS

NUMBER	BY	DATE



**PINCKNEYVILLE-DUQUOIN AIRPORT
 PERRY COUNTY, ILLINOIS
 T-HANGAR SITE WORK
 DRAINAGE DETAILS**



© Copyright CMT, Inc.
CMT
 CRAWFORD, MURPHY & TILLY, INC.
 CONSULTING ENGINEERS
 License No. 184-000613

DESIGN BY: KLB
 DRAWN BY: CMT
 CHECKED BY: JEF
 APPROVED BY: JEF
 DATE: 4/17/2009
 JOB No: 07062-03-00