

RO017

5A



Chicago Rockford International Airport



ROCKFORD, ILLINOIS  
GREATER ROCKFORD AIRPORT AUTHORITY  
3-17-0088-XX  
RFD-3909

REHAB. TWY B SOUTH PHASE 2

Revisions

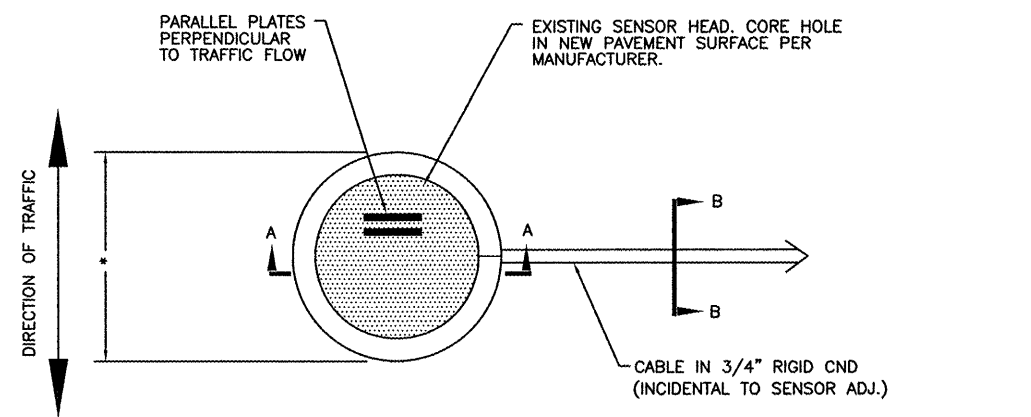
Date	Description

0 1  
THIS BAR IS EQUAL TO 1" AT FULL SCALE (17 X 11).

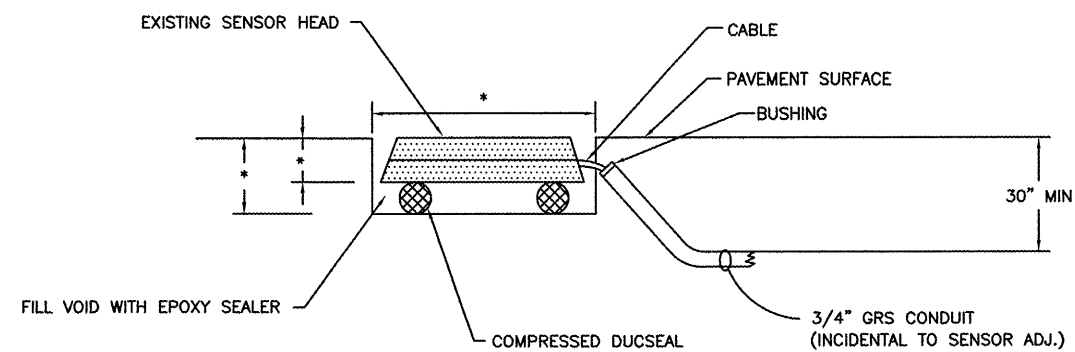
DESIGN BY: CMT-ARR  
DRAWN BY: CMT-ARR  
CHECKED BY: CMT-ARR  
APPROVED BY: CMT-RFD  
DATE: 5/8/2009  
JOB No: 09258-04-00

ELECTRICAL DETAILS - 4 (ELD4)

31



PLAN

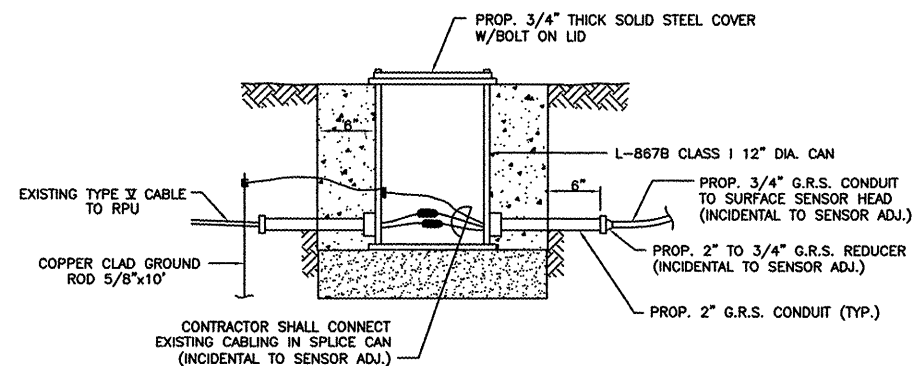


SECTION A-A

SURFACE SENSOR HEAD DETAIL

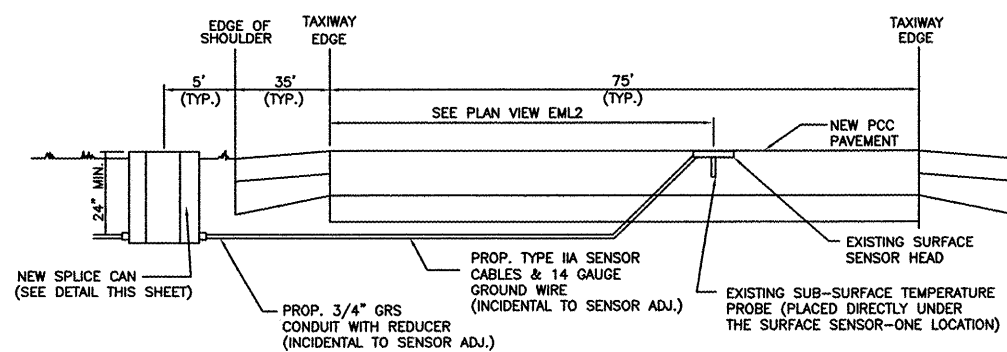
N.T.S.

\* DIMENSIONS AS REQUIRED BY SENSOR MANUFACTURER.



PROPOSED PAVEMENT SENSOR SPLICE CAN DETAIL

N.T.S.



SURFACE SENSOR INSTALLATION OVERVIEW

N.T.S.

NOTES FOR UPGRADING SURFACE SENSOR SYSTEM

- EXISTING SURFACE SENSOR SYSTEM IS SCAN, MANUFACTURED BY SURFACE SYSTEMS, INC. (QUIXOTE).
- REMOVE AND RE-INSTALL EXISTING (FP2000 TYPE) SURFACE SENSOR IN PAVEMENT AT PROXIMITY OF EXISTING SENSOR LOCATION AS SHOWN IN THE PLANS. INSTALL PROPOSED SPLICE CAN AT EDGE OF THE PAVEMENT TO INTERCEPT EXISTING SENSOR CABLE. INSTALL EXISTING SENSOR CABLE IN PROPOSED CONDUIT TO SPLICE CAN. SPLICE EXISTING SENSOR CABLE IN SPLICE CAN.
- SPLICE CAN PAID FOR SEPARATELY.

DATE: Monday, May 11, 2009 4:00:14 PM  
FILE: K:\Rockford\0925804\_Rehab\_Twy B\_South\_RFD\Drawn\Sheet\28-31-ELD1-4.dwg  
UPDATE BY: Jeremy Linke  
LAYOUT: 31-ELD4  
IMAGE\_PLOT\_SIZE: 101.50 X 72.00  
XREF: DWG: 000001.DWG