

STATE OF ILLINOIS
DEPARTMENT OF TRANSPORTATION
DIVISION OF HIGHWAYS

**PLANS FOR PROPOSED
FEDERAL AID HIGHWAY**

F. A. RFL.	SECTION	COUNTY	TOTAL SHEETS	SHEET NO.
	14-00031-00-RS	COOK	17	1
STA. 10+46.86		TO STA. 62+94.00		
FED. ROAD DIST. NO. 1		ILLINOIS	FED. AID PROJECT M-4003 (433)	

CONTRACT #61B49

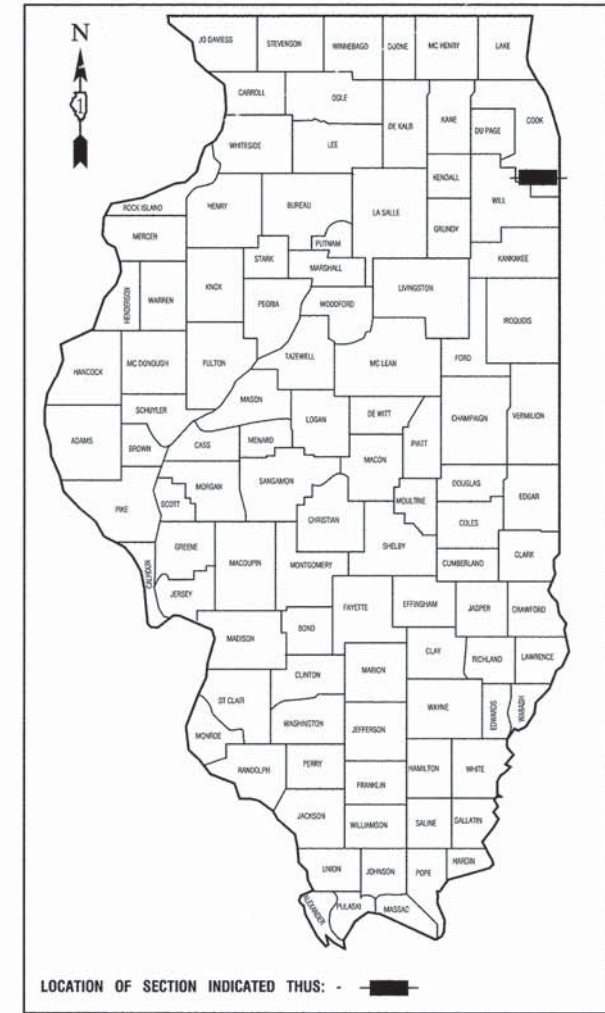
INDEX OF SHEETS

1. COVER SHEET, INDEX OF SHEETS & STATE STANDARDS
2. SUMMARY OF QUANTITIES & GENERAL NOTES
3. TYPICAL SECTIONS
- 4.-6. PAVEMENT PLAN
- 7.-9. PAVEMENT MARKING PLAN
- 10.-17. IDOT DISTRICT 1 STANDARD DETAILS

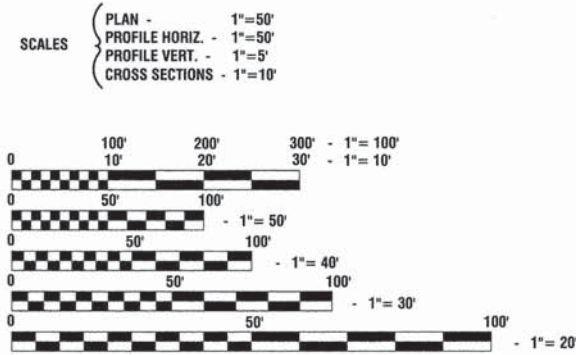
HIGHWAY STANDARDS

- | | |
|-----------|---|
| 000001-06 | STANDARD SYMBOLS, ABBREVIATIONS AND PATTERNS |
| 424001-08 | PERPENDICULAR CURB RAMPS |
| 442201-03 | CLASS C AND D PATCHES |
| 606001-04 | CONCRETE CURB TYPE B AND COMBINATION CONCRETE CURB AND GUTTER |
| 701501-06 | URBAN LANE CLOSURE, 2L, 2W, UNDIVIDED |
| 701801-05 | SIDEWALK, CORNER OR CROSSWALK CLOSURE |
| 701901-04 | TRAFFIC CONTROL DEVICES |

198TH STREET
FAU 2937 (TORRENCE AVENUE) TO FAU 2943 (BURNHAM AVENUE)
ROADWAY RESURFACING
SECTION NO.: 14-00031-00-RS
PROJECT NO.: M-4003 (433)
VILLAGE of LYNWOOD
COOK COUNTY
JOB NO.: C-91-157-15



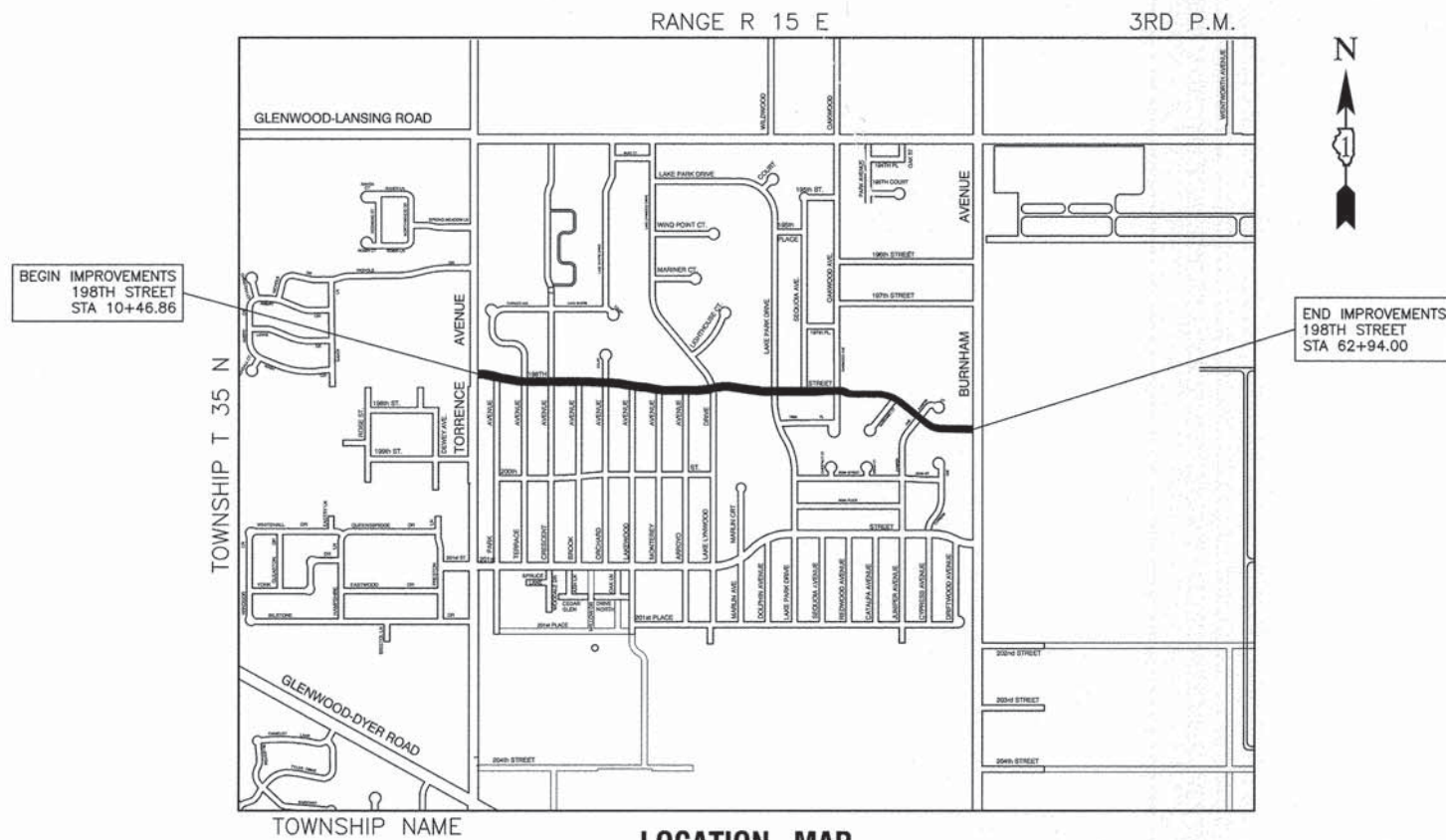
198TH STREET	
2014 ADT -	3,000
2040 ADT -	3,000
POSTED SPEED LIMIT -	25 mph
DESIGN PERIOD -	20 YEARS
DESIGN SPEED LIMIT -	30 mph
STREET CLASSIFICATION -	COLLECTOR URBAN



FULL SIZE PLANS HAVE BEEN PREPARED USING STANDARD ENGINEERING SCALES, REDUCED SIZED PLANS WILL NOT CONFORM TO STANDARD SCALES, IN MAKING MEASUREMENTS ON REDUCED PLANS, THE ABOVE SCALES MAY BE USED.

J. U. L. I. E.
JOINT UTILITY LOCATION INFORMATION FOR EXCAVATION
1-800-892-0123 or 811

CONTRACT NO. 61B49



LOCATION MAP

GROSS LENGTH= 5,246 FEET= 0.99 MILES
NET LENGTH= 5,246 FEET= 0.99 MILES

STATE OF ILLINOIS DEPARTMENT OF TRANSPORTATION
DIVISION OF HIGHWAYS

Approved: *Eugene Williams* 3/9/15
Village of Lynwood

Passed: *April 8, 2015*
John Forthman
District 1 Engineer of Local Roads & Streets

Released for Bid Based on Limited Review
April 8 2015
John Forthman
Deputy Director of Highways, Region 1 Engineer

PRINTED BY THE AUTHORITY OF THE STATE OF ILLINOIS

PREPARED BY OR UNDER THE DIRECT SUPERVISION OF:
David W. Shilling
3/9/2015

DAVID W. SHILLING
62-62411
REGISTERED PROFESSIONAL ENGINEER
STATE OF ILLINOIS
LICENSE EXPIRES: 11/30/15

I.D.O.T. FEDERAL AID DESIGN ENGINEER: FAWAD AQUEEL, P.E. 847-705-4021, SCHAMBOURG, IL. CONSULTANTS: ROBINSON ENGINEERING, LTD. 708-331-6700

SUMMARY OF QUANTITIES					CONSTRUCTION TYPE CODE
S.I.	CODE NO.	ITEM	UNIT	TOTAL QUANTITY	0005
	20101700	SUPPLEMENTAL WATERING	UNIT	5	5
	35800100	PREPARATION OF BASE	SQ YD	200	200
	35800200	AGGREGATE BASE REPAIR	TON	80	80
	40201000	AGGREGATE FOR TEMPORARY ACCESS	TON	230	230
	40600275	BITUMINOUS MATERIALS (PRIME COAT)	POUND	9372	9372
	40600400	MIXTURE FOR CRACKS, JOINTS, AND FLANGEWAYS	TON	5	5
	40600827	POLYMERIZED LEVELING BINDER (MACHINE METHOD), IL-4.75, N50	TON	875	875
	40600982	HOT-MIX ASPHALT SURFACE REMOVAL - BUTT JOINT	SQ YD	728	728
	40603335	HOT-MIX ASPHALT SURFACE COURSE, MIX "D", N50	TON	1749	1749
	42300300	PORTLAND CEMENT CONCRETE DRIVEWAY PAVEMENT, 7 INCH	SQ YD	227	227
	42400200	PORTLAND CEMENT CONCRETE SIDEWALK 5 INCH	SQ FT	2777	2777
	42400800	DETECTABLE WARNINGS	SQ FT	520	520
	44000157	HOT-MIX ASPHALT SURFACE REMOVAL, 2"	SQ YD	20171	20171
	44000200	DRIVEWAY PAVEMENT REMOVAL	SQ YD	516	516
	44000600	SIDEWALK REMOVAL	SQ FT	3070	3070
	44201717	CLASS D PATCHES, TYPE II, 6 INCH	SQ YD	34	34
	44201721	CLASS D PATCHES, TYPE III, 6 INCH	SQ YD	85	85
	44201723	CLASS D PATCHES, TYPE IV, 6 INCH	SQ YD	379	379
	60250200	CATCH BASINS TO BE ADJUSTED	EACH	36	36
	60252800	CATCH BASINS TO BE RECONSTRUCTED	EACH	1	1
	60255500	MANHOLES TO BE ADJUSTED	EACH	6	6
	67100100	MOBILIZATION	L SUM	1	1
	70102620	TRAFFIC CONTROL AND PROTECTION, STANDARD 701501	L SUM	1	1

* - INDICATES SPECIALTY ITEMS

SUMMARY OF QUANTITIES					CONSTRUCTION TYPE CODE
S.I.	CODE NO.	ITEM	UNIT	TOTAL QUANTITY	0005
	70102640	TRAFFIC CONTROL AND PROTECTION, STANDARD 701801	L SUM	1	1
*	78000200	THERMOPLASTIC PAVEMENT MARKING - LINE 4"	FOOT	1310	1310
*	78000650	THERMOPLASTIC PAVEMENT MARKING - LINE 24"	FOOT	522	522
	X2520700	SODDING, SPECIAL	SQ YD	598	598
	Z0004530	HOT-MIX ASPHALT DRIVEWAY PAVEMENT, 8"	SQ YD	289	289
	Z0004562	COMBINATION CONCRETE CURB AND GUTTER REMOVAL AND REPLACEMENT	FOOT	2708	2708

GENERAL NOTES

* - INDICATES SPECIALTY ITEMS

- BEFORE STARTING ANY EXCAVATION THE CONTRACTOR SHALL CALL "J.U.L.I.E." AT (800) 892-0123 OR 811 AND (312) 744-7000 FOR FIELD LOCATIONS OF BURIED ELECTRIC, TELEPHONE AND GAS UTILITIES. (48 HOUR NOTIFICATION REQUIRED)
- UTILITIES INDICATED ON THE PLANS ARE PROVIDED FOR THE CONTRACTOR'S USE AND ARE BASED UPON INFORMATION AVAILABLE AT THE TIME OF THE ADVERTISEMENT FOR BIDS. THE OWNER AND ENGINEER DO NOT GUARANTEE THE ACCURACY OF UTILITY INFORMATION.
- IT SHALL BE THE CONTRACTOR'S RESPONSIBILITY TO VERIFY ALL DIMENSIONS AND CONDITIONS EXISTING IN THE FIELD PRIOR TO CONSTRUCTION AND ORDERING OF MATERIALS.
- THE THICKNESS OF HMA MIXTURE STATED IN THE SPECIFICATIONS IS THE NOMINAL THICKNESS. DEVIATIONS FROM THE NOMINAL THICKNESS WILL BE PERMITTED WHEN SUCH DEVIATIONS OCCUR DUE TO IRREGULARITIES IN THE EXISTING SURFACE OR BASE ON WHICH THE HMA SURFACE IS PLACED.
- ACCESS TO DRIVEWAYS SHALL BE MAINTAINED AT ALL TIMES BY LIMITING CURB AND GUTTER REPAIR TO ONE-HALF THE DRIVEWAY WIDTH AT ONE TIME AS WELL AS TEMPORARY AGGREGATE. ANY TEMPORARY AGGREGATE REQUIRED SHALL BE CONSIDERED INCLUDED IN THE COST OF THE RELATED PAY ITEM IT IS NEEDED FOR WHEN DIRECTED BY THE ENGINEER.
- THE REMOVAL AND/OR REPLACEMENT OF ANY DRIVEWAYS, PAVEMENT, CURB, SIDEWALK, ETC. SHALL BE ACCOMPLISHED BY MEANS OF A SAW CUT JOINT, AT THE DIRECTION OF THE ENGINEER. SAW CUTTING WILL NOT BE PAID FOR SEPARATELY, BUT SHALL BE INCLUDED IN THE UNIT PRICE FOR THE VARIOUS REMOVAL ITEMS.
- ANY LOOSE MATERIAL DEPOSITED IN THE FLOW LINE OF DITCHES, GUTTERS OR OTHER DRAINAGE STRUCTURES SHALL BE REMOVED BY THE END OF EACH DAY BY THE CONTRACTOR AT THEIR EXPENSE.
- THE CONTRACTOR SHALL LEAVE ANY CLEAN EXCESS ORGANIC FILL EXCAVATED DURING THE CURB AND GUTTER AND SIDEWALK REMOVAL AND REPLACEMENT OPERATIONS ON SITE. ANY EXCESS MATERIAL SHALL BE SPREAD OR PLACED AT LOCATIONS DETERMINED BY THE ENGINEER. THIS WORK WILL NOT BE PAID FOR SEPARATELY, BUT SHALL BE INCLUDED IN THE UNIT PRICE FOR THE VARIOUS REMOVAL AND REPLACEMENT ITEMS. RESTORATION OF AREAS WHERE EXCESS MATERIALS IS PLACED SHALL BE PAID FOR AS SEEDING (COMPLETE).

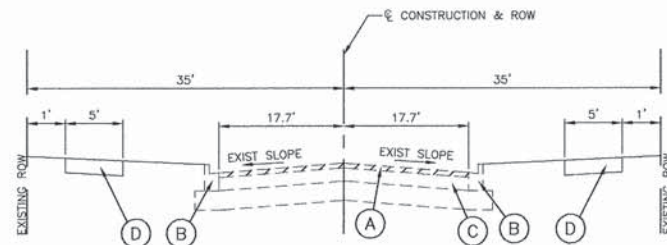
FILE NAME = 14612-QUAN-01 - IDOT P01

USER NAME =	DESIGNED -- DWS	REVISION --
	CHECKED -- PKB	REVISION --
PLOT SCALE =	DRAWN -- RG	REVISION --
PLOT DATE = 03-09-15	CHECKED -- AG	REVISION --

STATE OF ILLINOIS
DEPARTMENT OF TRANSPORTATION

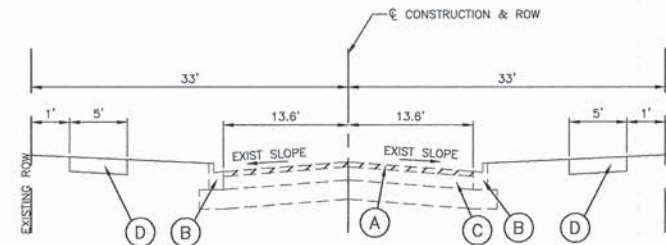
198TH STREET ROADWAY RESURFACING			F.A. RTE.	SECTION	COUNTY	TOTAL SHEETS	SHEET NO.
SUMMARY OF QUANTITIES & GENERAL NOTES				14-00031-00-RS	COOK	17	2
SCALE: NONE	SHEET NO. 2	OF 17 SHEETS	STA.	TO STA.		CONTRACT NO. 61B49	

FED. ROAD DIST. NO. 1	ILLINOIS	FED. AID PROJECT M-4003 (433)
-----------------------	----------	-------------------------------



EXISTING TYPICAL SECTION

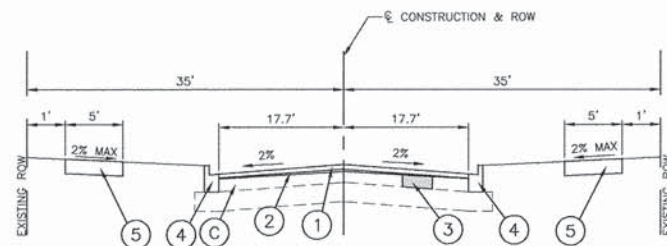
198TH STREET
TORRENCE AVENUE TO OAKWOOD AVENUE
STA 10+50 TO STA 48+50



EXISTING TYPICAL SECTION

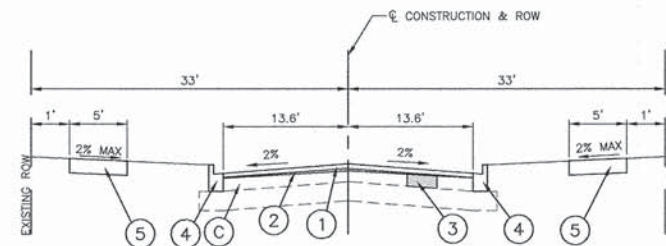
198TH STREET
OAKWOOD AVENUE TO BURNHAM AVENUE
STA 48+50 TO STA 62+94

- EXISTING LEGEND**
- (A) HOT MIX ASPHALT SURFACE REMOVAL, 2"
 - (B) EXISTING CURB & GUTTER TO BE REMOVED AT LOCATIONS SHOWN ON PLANS OR DIRECTED BY ENGINEER
 - (C) EXISTING HOT-MIX ASPHALT PAVEMENT
 - (D) EXISTING PCC SIDEWALK TO BE REMOVED AT LOCATIONS SHOWN ON PLANS OR DIRECTED BY ENGINEER



PROPOSED TYPICAL SECTION

198TH STREET
TORRENCE AVENUE TO OAKWOOD AVENUE
NOTE: CONTRACTOR SHALL MILL BEFORE PATCHING
STA 10+50 TO STA 48+50



PROPOSED TYPICAL SECTION

198TH STREET
OAKWOOD AVENUE TO BURNHAM AVENUE
NOTE: CONTRACTOR SHALL MILL BEFORE PATCHING
STA 48+50 TO STA 62+94

- PROPOSED LEGEND**
- (1) HOT MIX ASPHALT SURFACE COURSE, MIX "D", N50, 1-1/2"
 - (2) POLYMERIZED LEVELING BINDER (MACHINE METHOD), IL-4.75, N50, 3/4"
 - (3) CLASS D PATCH, 6" AT LOCATIONS SHOWN ON PLANS OR DIRECTED BY ENGINEER
 - (4) PROPOSED CURB AND GUTTER TO BE INSTALLED AT LOCATIONS SHOWN ON PLAN OR DIRECTED BY ENGINEER (IN KIND)
 - (5) PROPOSED PORTLAND CEMENT CONCRETE SIDEWALK 5" REPLACEMENT AT LOCATIONS AS SHOWN ON PLANS OR DIRECTED BY THE ENGINEER

HOT-MIX ASPHALT MIXTURE REQUIREMENTS
(CONTRACTOR SHALL MILL BEFORE PATCHING)

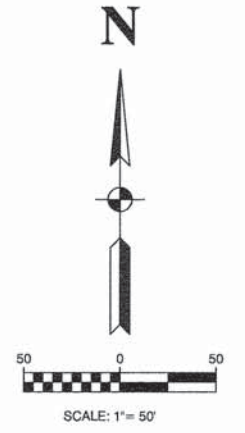
MIXTURE TYPE	AIR VOIDS @ Ndes
RESURFACING	
HOT-MIX ASPHALT SURFACE COURSE, MIX "D", N50, 1-1/2" (IL 9.5 MM)	4% @ 50 Gyr.
POLYMERIZED LEVELING BINDER (MACHINE METHOD), IL-4.75, N50, 3/4"	3.5% @ 50 Gyr.
PATCHING	
CLASS D PATCHES, TYPE I, II, III, IV, (HMA BINDER IL-19.0mm): 6" (IN 3 LIFTS)	4% @ 70 Gyr.
DRIVEWAYS	
HOT-MIX ASPHALT SURFACE COURSE, MIX "D", N50, 2" (IL 9.5 MM)	4% @ 50 Gyr.
HOT-MIX ASPHALT BINDER COURSE, IL-19.0, N50, 6" (IN 3 LIFTS)	4% @ 50 Gyr.
CURB PATCH	
HOT-MIX ASPHALT PATCH (HMA BINDER IL-19.0mm): 6" (IN 3 LIFTS)	4% @ 70 Gyr.

NOTES:

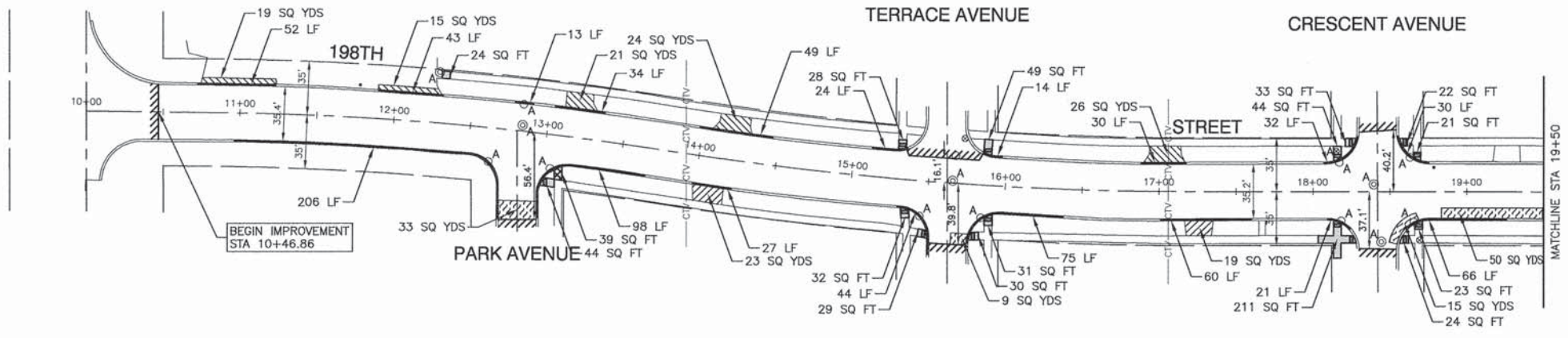
- THE UNIT WEIGHT USED TO CALCULATE ALL HMA SURFACE MIXTURE QUANTITIES IS 112 LBS/SQ YD/IN. FOR "AC TYPE" AND "PERCENT RAP" SEE DISTRICT ONE SPECIAL PROVISIONS.
- THE "AC TYPE" FOR POLYMERIZED HMA MIXES SHALL BE "SBS/SBR PG 76-22" AND FOR NON-POLYMERIZED HMA THE "AC TYPE" SHALL BE "PG 64-22" UNLESS MODIFIED BY DISTRICT ONE SPECIAL PROVISIONS. FOR "PERCENT OF RAP" SEE DISTRICT ONE SPECIAL PROVISIONS.

NOTE:

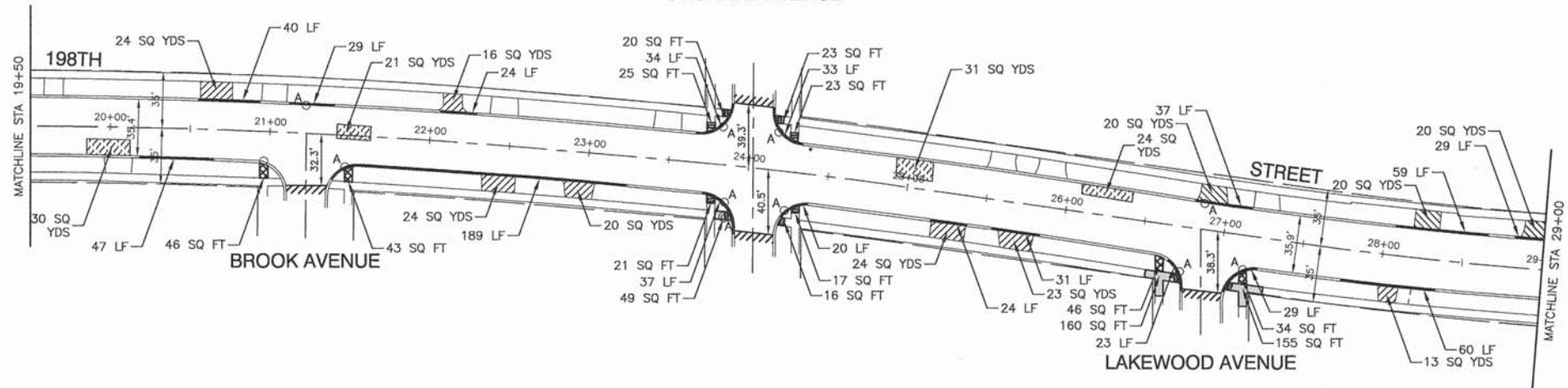
CLASS D PATCHES, TYPE I, II, III & IV AT APPROXIMATE STATIONS AS SHOWN ON THE PLANS OR AS DIRECTED BY THE ENGINEER.



TORRENCE AVENUE



ORCHARD AVENUE



LEGEND

- CLASS D PATCH, 6"
- HMA DRIVEWAY REMOVAL AND REPLACEMENT
- CONCRETE DRIVEWAY REMOVAL AND REPLACEMENT
- CONCRETE SIDEWALK REMOVAL
- CONCRETE SIDEWALK REMOVAL AND REPLACEMENT
- DETECTABLE WARNINGS
- BUTT JOINTS
- COMBINATION CONCRETE CURB AND GUTTER REMOVAL AND REPLACEMENT
- "A" STRUCTURE TO BE ADJUSTED
- "R" STRUCTURE TO BE RECONSTRUCTED

FILE NAME = 14612-PLAN-01 - IDOT P01

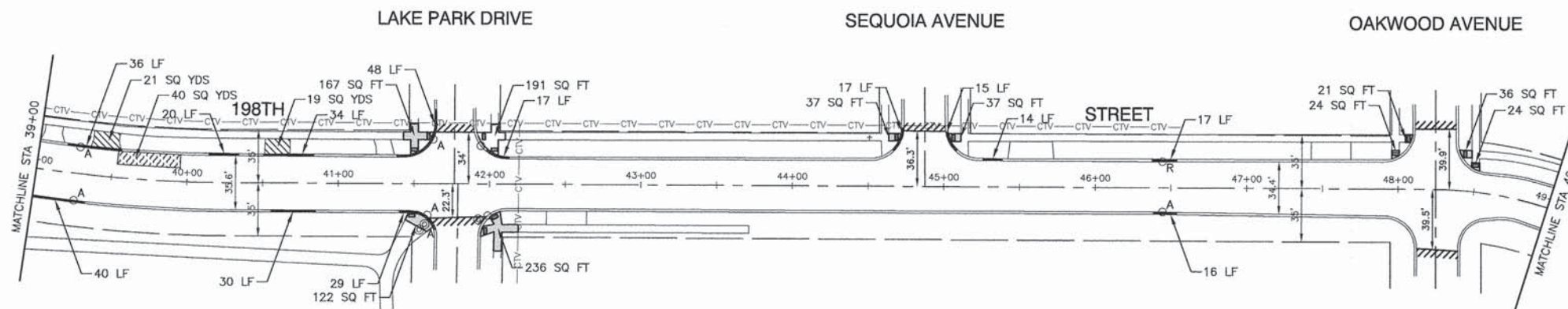
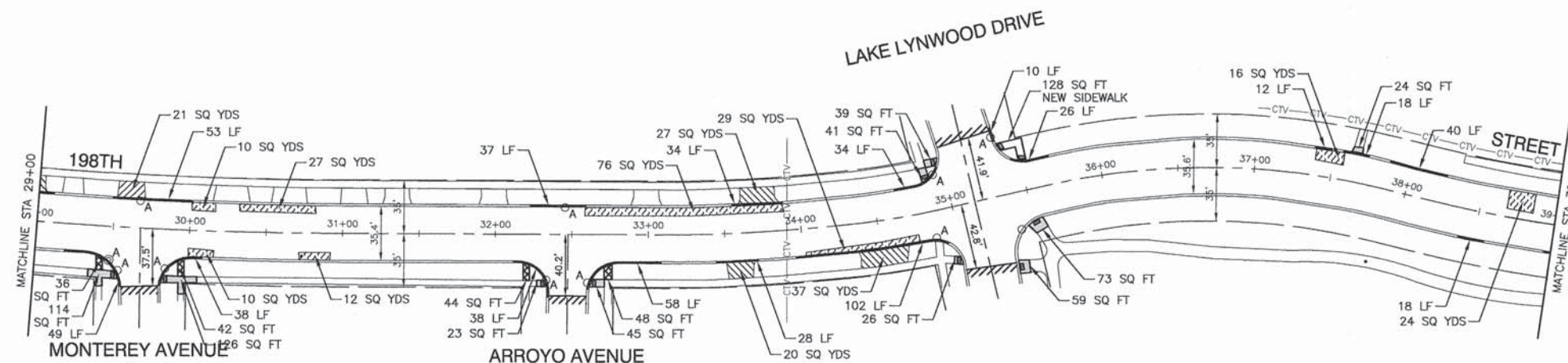
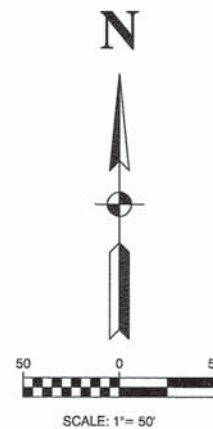
USER NAME =	DESIGNED — DWS	REVISED —
	CHECKED — PKB	REVISED —
PLOT SCALE =	DRAWN — RG	REVISED —
PLOT DATE = 03-09-15	CHECKED — AG	REVISED —

STATE OF ILLINOIS
DEPARTMENT OF TRANSPORTATION

198TH STREET
ROADWAY RESURFACING
PROPOSED PLAN

SCALE: 1"=50' SHEET NO. 4 OF 17 SHEETS STA. TO STA.

F.A. RTE.	SECTION	COUNTY	TOTAL SHEETS	SHEET NO.
	14-00031-00-RS	COOK	17	4
CONTRACT NO. 61B49				
FED. ROAD DIST. NO. 1 ILLINOIS FED. AID PROJECT M-4003 (433)				



LEGEND

- CLASS D PATCH, 6"
- HMA DRIVEWAY REMOVAL AND REPLACEMENT
- CONCRETE DRIVEWAY REMOVAL AND REPLACEMENT
- CONCRETE SIDEWALK REMOVAL
- CONCRETE SIDEWALK REMOVAL AND REPLACEMENT
- DETECTABLE WARNINGS
- BUTT JOINTS
- COMBINATION CONCRETE CURB AND GUTTER REMOVAL AND REPLACEMENT
- "A" STRUCTURE TO BE ADJUSTED
- "R" STRUCTURE TO BE RECONSTRUCTED

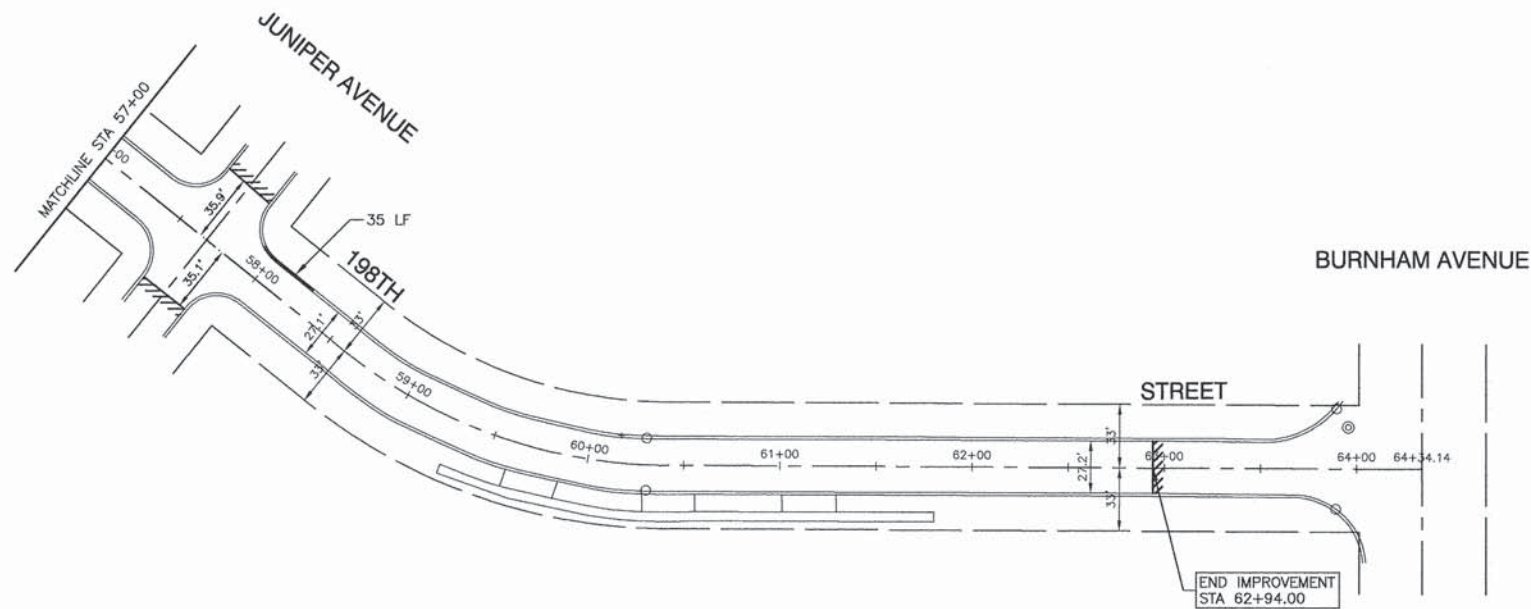
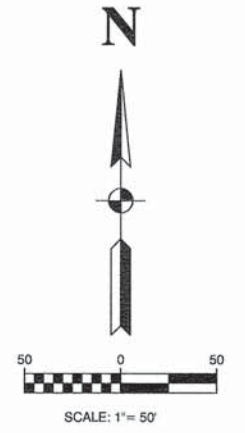
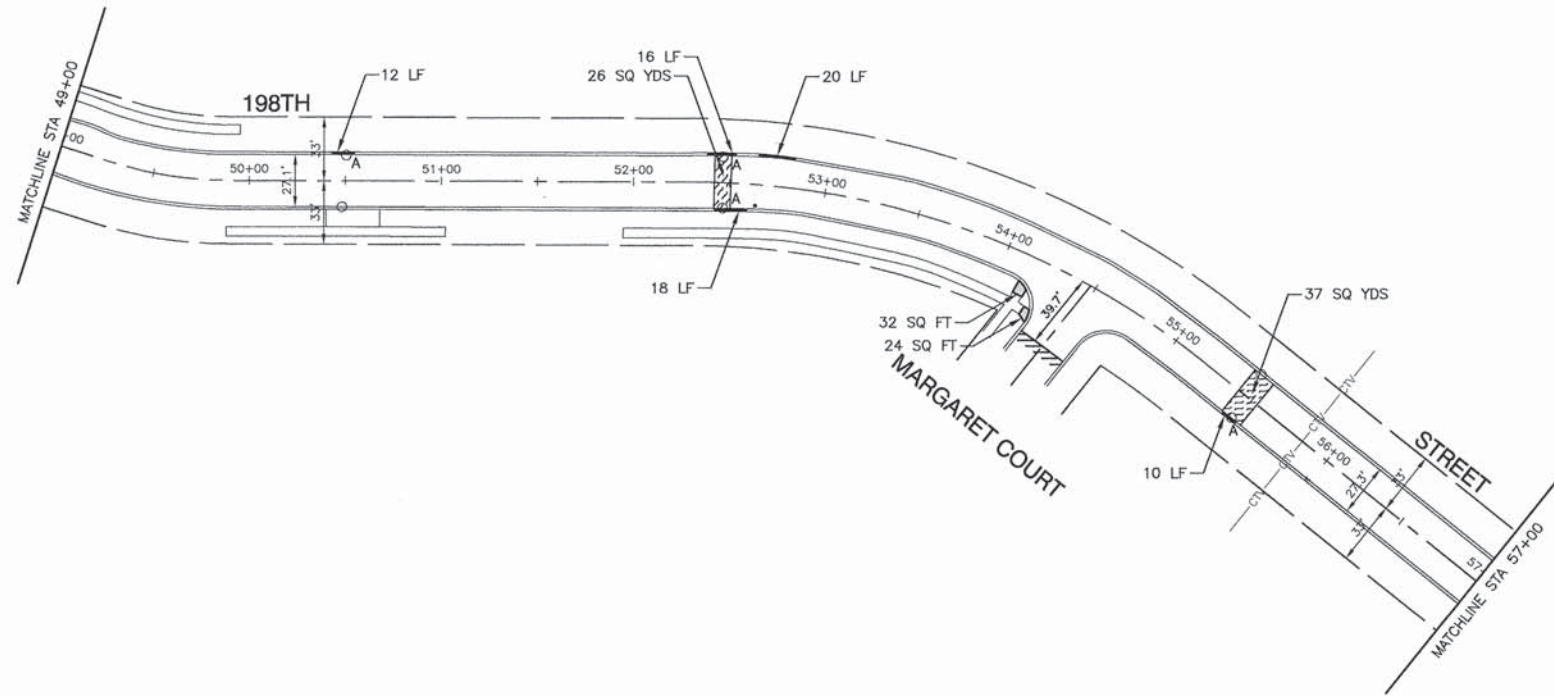
FILE NAME = 14612-PLAN-01 - IDOT P02

USER NAME =	DESIGNED -- DWS	REVISED --
PLOT SCALE =	CHECKED -- PKB	REVISED --
PLOT DATE = 03-09-15	DRAWN -- RG	REVISED --
	CHECKED -- AG	REVISED --

STATE OF ILLINOIS
DEPARTMENT OF TRANSPORTATION

198TH STREET ROADWAY RESURFACING PROPOSED PLAN		
SCALE: 1"=50'	SHEET NO. 5 OF 17 SHEETS	STA. TO STA.

F.A. RTE.	SECTION	COUNTY	TOTAL SHEETS	SHEET NO.
	14-00031-00-RS	COOK	17	5
CONTRACT NO. 61B49				
FED. ROAD DIST. NO. 1 ILLINOIS FED. AID PROJECT M-4003 (433)				



LEGEND

- CLASS D PATCH, 6"
- HMA DRIVEWAY REMOVAL AND REPLACEMENT
- CONCRETE DRIVEWAY REMOVAL AND REPLACEMENT
- CONCRETE SIDEWALK REMOVAL
- CONCRETE SIDEWALK REMOVAL AND REPLACEMENT
- DETECTABLE WARNINGS
- BUTT JOINTS
- COMBINATION CONCRETE CURB AND GUTTER REMOVAL AND REPLACEMENT
- "A" STRUCTURE TO BE ADJUSTED
- "R" STRUCTURE TO BE RECONSTRUCTED

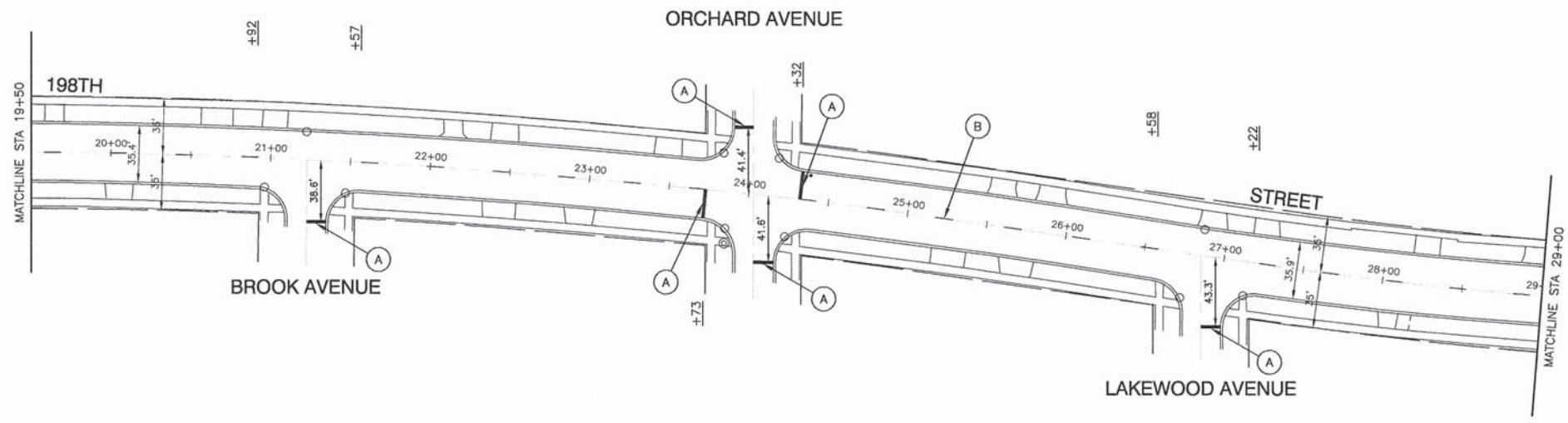
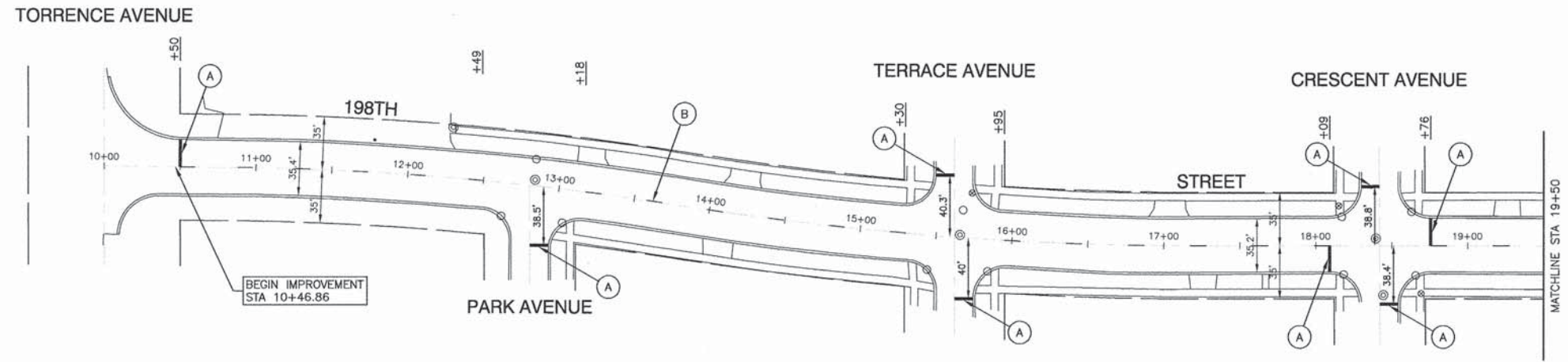
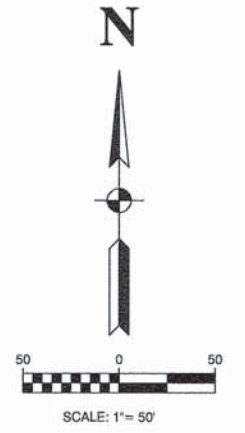
FILE NAME = 14612-PLAN-01 - IDOT P03

USER NAME =	DESIGNED — DWS	REVISED —
	CHECKED — PKB	REVISED —
PLOT SCALE =	DRAWN — RG	REVISED —
PLOT DATE = 03-09-15	CHECKED — AG	REVISED —

**STATE OF ILLINOIS
DEPARTMENT OF TRANSPORTATION**

198TH STREET ROADWAY RESURFACING PROPOSED PLAN			
SCALE: 1"=50'	SHEET NO. 6 OF 17 SHEETS	STA. TO STA.	

F.A. RTE.	SECTION	COUNTY	TOTAL SHEETS	SHEET NO.
	14-00031-00-RS	COOK	17	6
CONTRACT NO. 61B49				
FED. ROAD DIST. NO. 1 ILLINOIS FED. AID PROJECT M-4003 (433)				



- LEGEND**
- (A) THERMOPLASTIC PAVEMENT MARKING
WHITE, 24"
 - (B) THERMOPLASTIC PAVEMENT MARKING
YELLOW, LINE, 4", SKIP DASH (10' LINE-30' SPACE)

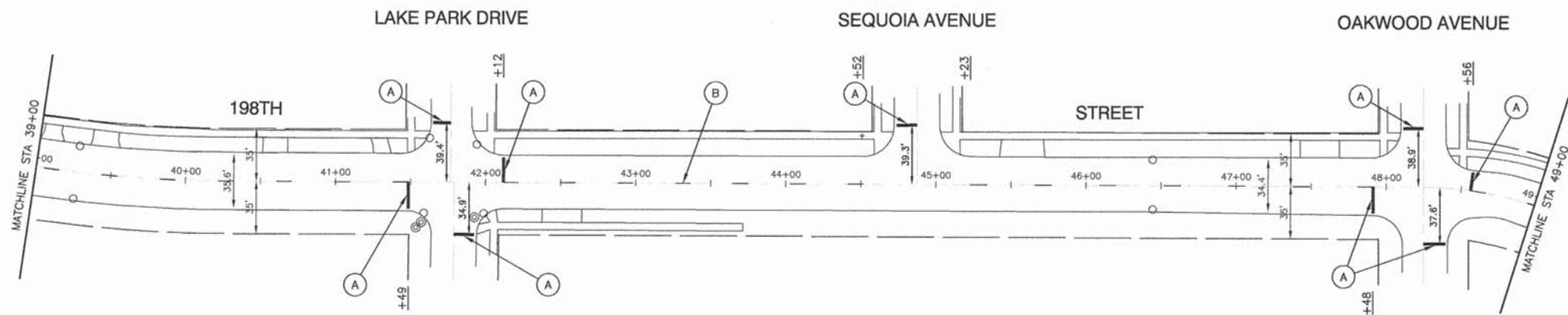
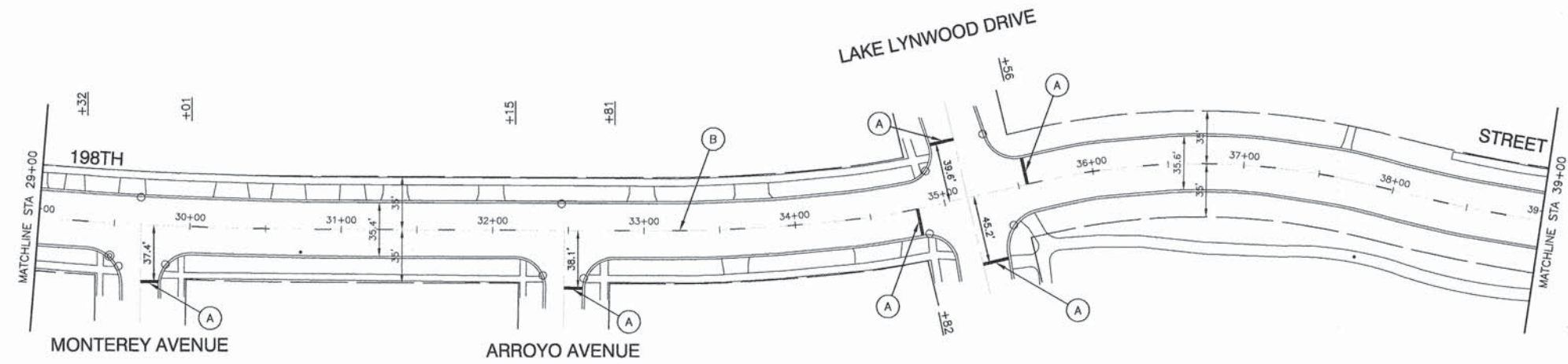
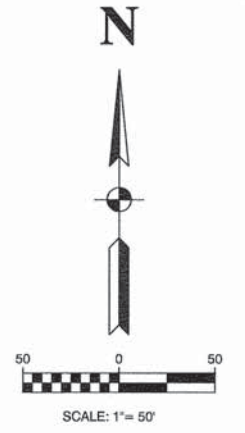
FILE NAME = 14612-PLAN-01 - PVMK P01

USER NAME =	DESIGNED — DWS	REVISED —
	CHECKED — PKB	REVISED —
PLOT SCALE =	DRAWN — RG	REVISED —
PLOT DATE = 03-09-15	CHECKED — AG	REVISED —

STATE OF ILLINOIS
DEPARTMENT OF TRANSPORTATION

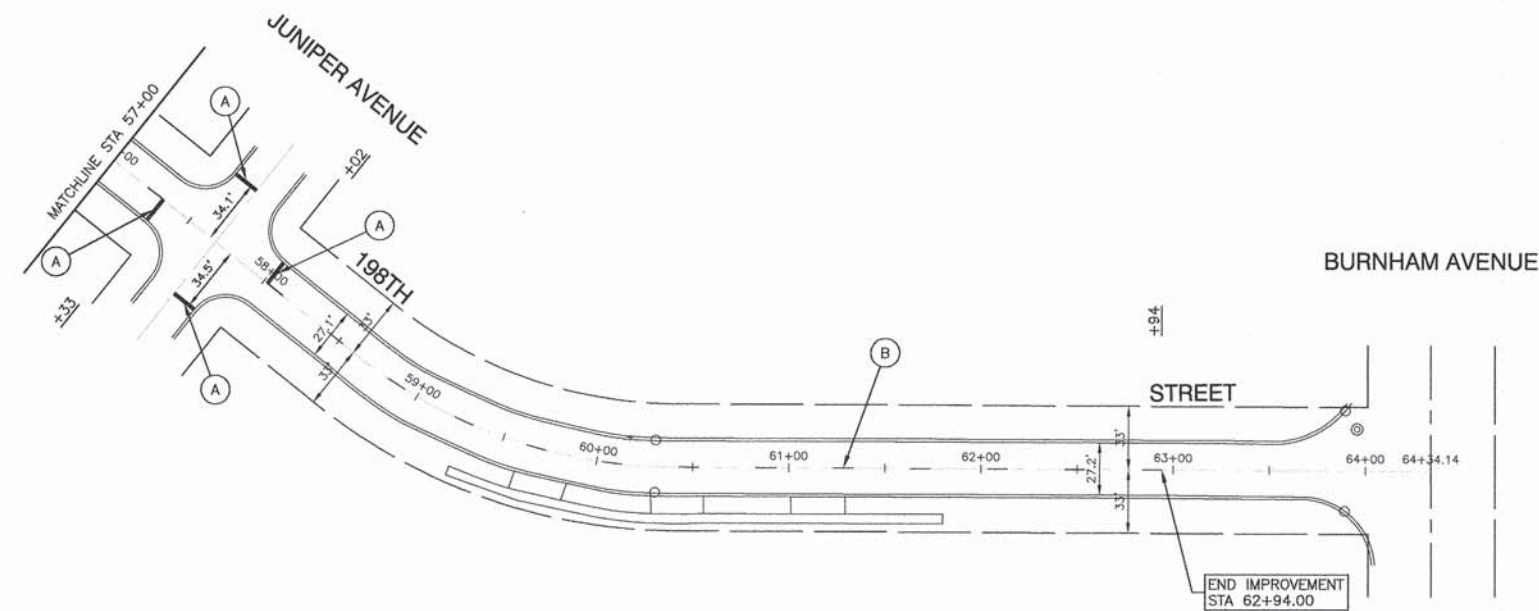
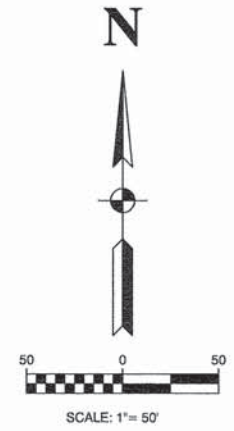
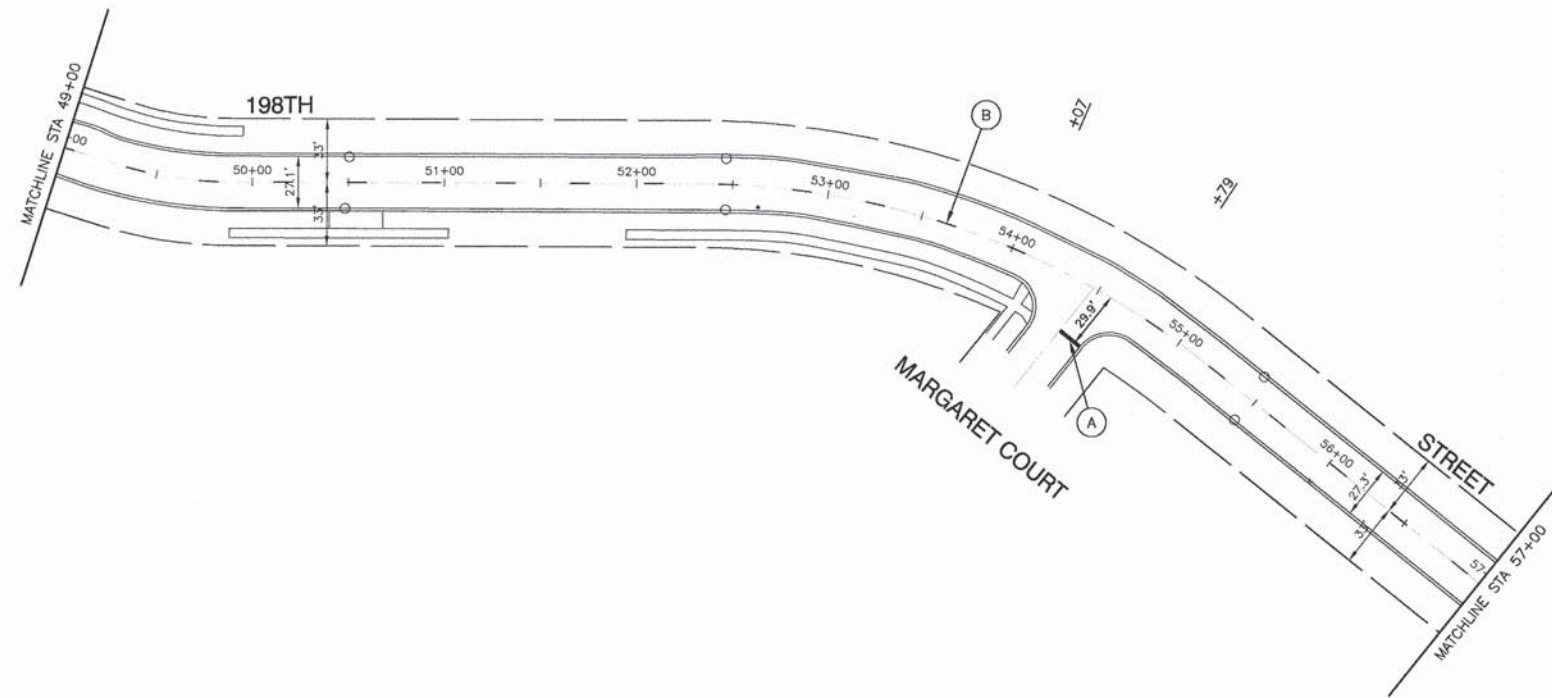
198TH STREET ROADWAY RESURFACING PAVEMENT MARKING PLAN			
SCALE: 1"=50'	SHEET NO. 7 OF 17 SHEETS	STA.	TO STA.

F.A. RTE.	SECTION	COUNTY	TOTAL SHEETS	SHEET NO.
	14-00031-00-RS	COOK	17	7
CONTRACT NO. 61B49				
FED. ROAD DIST. NO. 1 ILLINOIS FED. AID PROJECT M-4003 (433)				



- LEGEND**
- (A) THERMOPLASTIC PAVEMENT MARKING
WHITE, 24"
 - (B) THERMOPLASTIC PAVEMENT MARKING
YELLOW, LINE, 4", SKIP DASH (10' LINE-30' SPACE)

FILE NAME = 14612-PLAN-01 - PVMK P02	USER NAME =	DESIGNED - DWS	REVISED -	STATE OF ILLINOIS DEPARTMENT OF TRANSPORTATION	198TH STREET ROADWAY RESURFACING PAVEMENT MARKING PLAN			F.A. RTE.	SECTION	COUNTY	TOTAL SHEETS	SHEET NO.
	PLOT SCALE =	CHECKED - PKB	REVISED -		SCALE: 1"=50'	SHEET NO. 8	OF 17 SHEETS	STA.	TO STA.	14-00031-00-RS	COOK	17
	PLOT DATE = 03-09-15	DRAWN - RG	REVISED -					CONTRACT NO. 61B49				
		CHECKED - AG	REVISED -					FED. ROAD DIST. NO. 1 ILLINOIS FED. AID PROJECT M-4003 (433)				



LEGEND

- (A) THERMOPLASTIC PAVEMENT MARKING
WHITE, 24"
- (B) THERMOPLASTIC PAVEMENT MARKING
YELLOW, LINE, 4", SKIP DASH (10' LINE--30' SPACE)

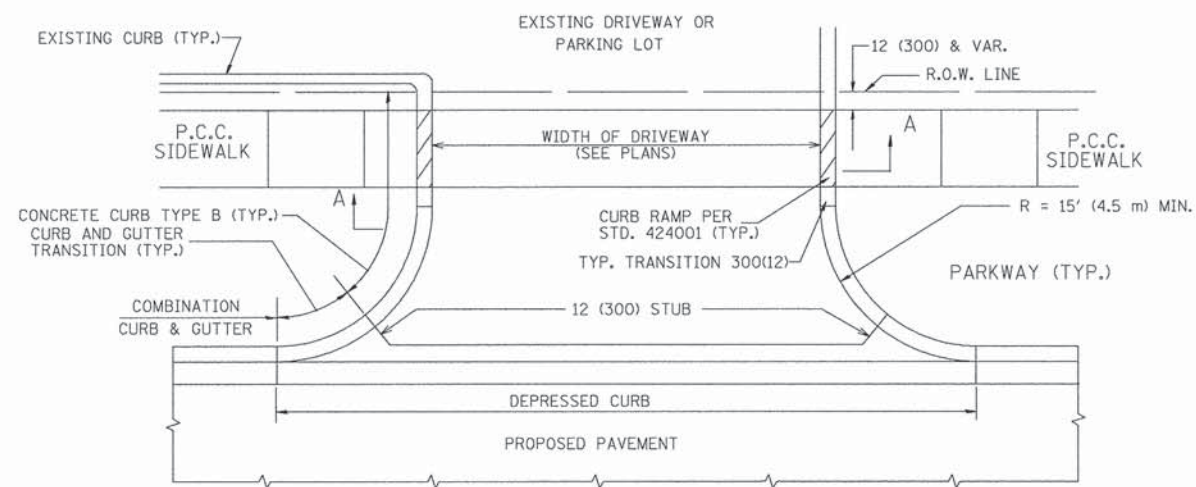
FILE NAME = 14612-PLAN-01 - PVMK P03

USER NAME =	DESIGNED -- DWS	REVISED --
PLOT SCALE =	CHECKED -- PKB	REVISED --
PLOT DATE = 03-09-15	DRAWN -- RG	REVISED --
	CHECKED -- AG	REVISED --

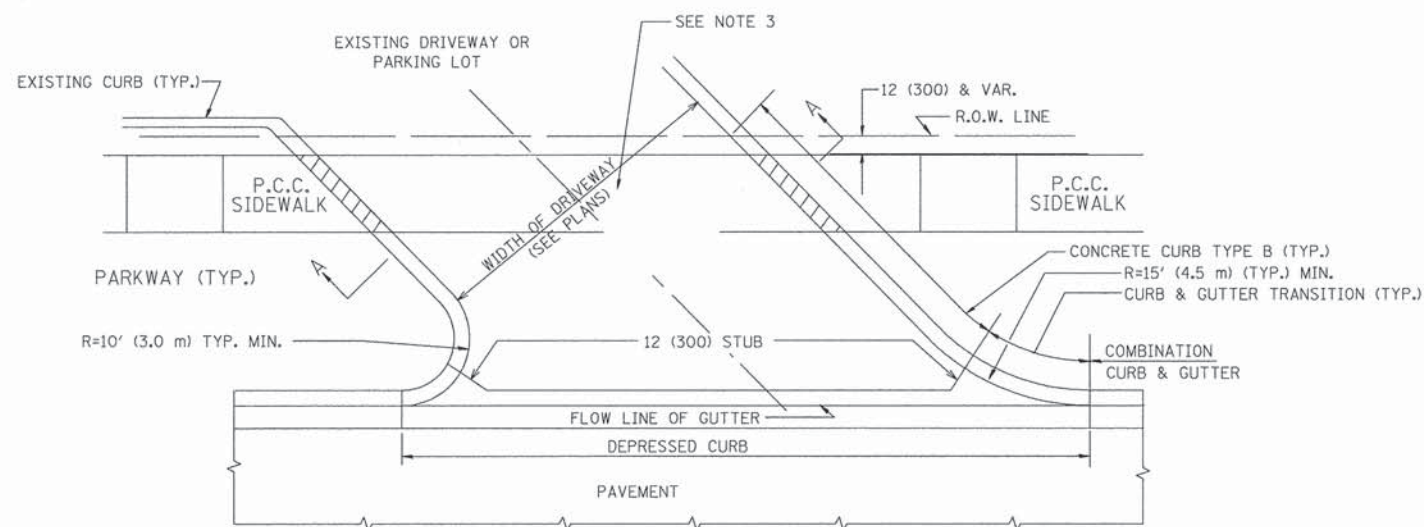
STATE OF ILLINOIS
DEPARTMENT OF TRANSPORTATION

198TH STREET ROADWAY RESURFACING PAVEMENT MARKING PLAN	
SCALE: 1"=50'	SHEET NO. 9 OF 17 SHEETS
STA.	TO STA.

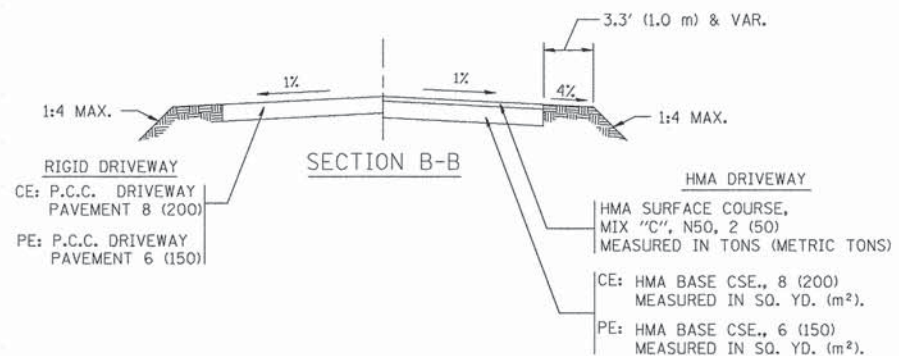
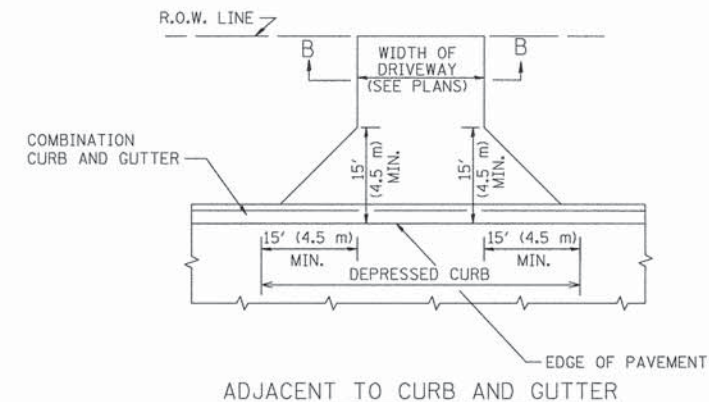
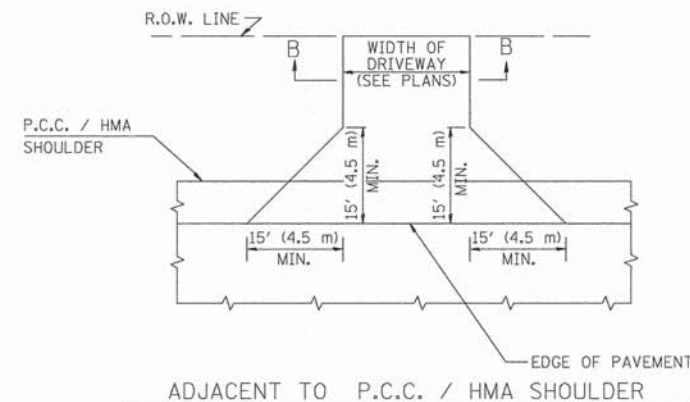
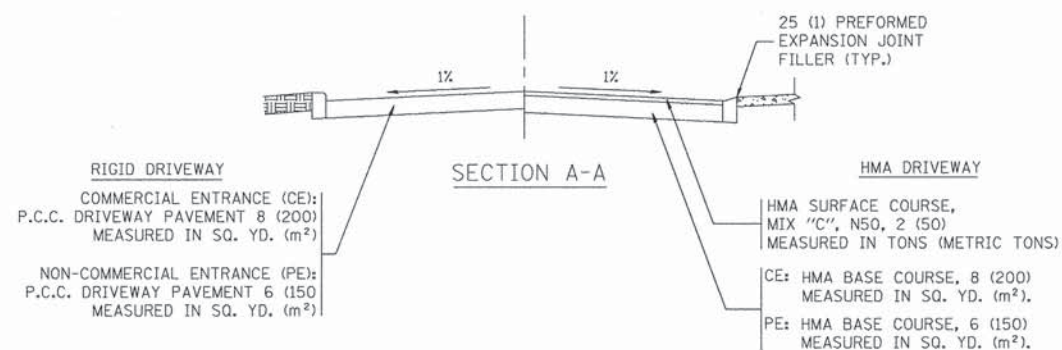
F.A. RTE.	SECTION	COUNTY	TOTAL SHEETS	SHEET NO.
	14-00031-00-RS	COOK	17	9
CONTRACT NO. 61B49				
FED. ROAD DIST. NO. 1 ILLINOIS FED. AID PROJECT M-4003 (433)				



WITH CONCRETE CURB, TYPE B



WITH CONCRETE CURB, TYPE B



GENERAL NOTES:

DRIVEWAY SLOPES, LOCATIONS, & GEOMETRIC LAYOUT SHALL BE IN ACCORDANCE WITH THE LATEST EDITION OF THE "HANDBOOK FOR POLICY ON PERMITS FOR ACCESS DRIVEWAYS TO STATE HIGHWAYS". FOR FURTHER LAYOUT REQUIREMENTS, REFER TO ILLUSTRATIONS IN THE PERMIT HANDBOOK. DRIVEWAYS SHALL BE REPLACED IN KIND, UNLESS OTHERWISE NOTED ON THE PLANS.

COMMERCIAL DRIVEWAYS SHALL BE CONSTRUCTED WITH CONCRETE CURB, TYPE B RETURNS EXCEPT WHEN THE SIDEWALK EDGE IS 4 FEET (1.2 METERS) OR LESS FROM THE BACK OF CURB, CONSTRUCT A FLARE DRIVEWAY WITHOUT CURB.

THE RESIDENT ENGINEER SHALL CONTACT THE TRAFFIC PERMIT OFFICE AT 847/ 705-4131 FOR ANY QUESTIONS ON DRIVEWAYS SHOWN IN THE PLANS; SPECIFICALLY IN REFERENCE TO ADDITIONAL AND/OR RELOCATION/REMOVAL OF A DRIVEWAY.

COMBINATION CONCRETE CURB & GUTTER SHALL BE MEASURED STRAIGHT ACROSS THE DRIVEWAY. NO ADDITIONAL COMPENSATION WILL BE ALLOWED FOR THE CURB & GUTTER TRANSITION.

1 (25) PREFORMED EXPANSION JOINT FILLER WILL NOT BE PAID SEPARATELY, BUT SHALL BE CONSIDERED INCLUDED IN THE COST OF THE P.C.C. DRIVEWAY PAVEMENT OR P.C.C. SIDEWALK.

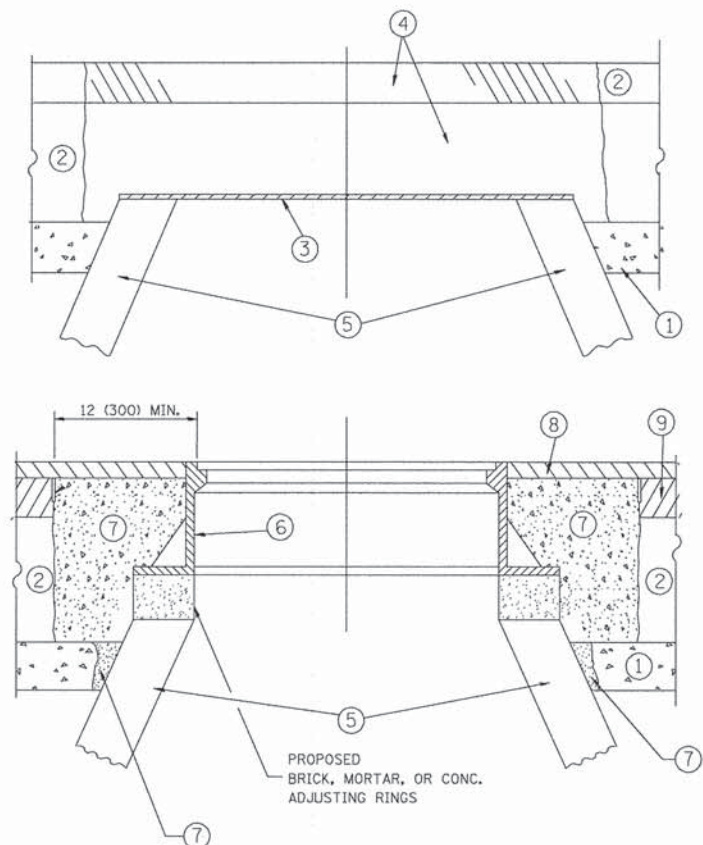
WHEN THE P.C.C. SIDEWALK EXTENDS THROUGH THE DRIVEWAY, THE THICKNESS OF THE SIDEWALK IN THE DRIVEWAY AREA SHALL BE THE SAME AS THE DRIVEWAY THICKNESS. SIDEWALK WILL BE PAID FOR AS P.C.C. SIDEWALK OF THE THICKNESS SPECIFIED. SIDEWALK CROSS SLOPE THRU DRIVEWAY AREA TO BE A MAXIMUM OF 1:50.

FILE NAME = c:\p\o\jects\d\statd22x34\bd01.dgn	USER NAME = bauerdl	DESIGNED - R. SHAH	REVISED - M. GOMEZ 04-06-01
		DRAWN -	REVISED - P. LoFLUER 04-15-03
	PLOT SCALE = 49.9999' / IN.	CHECKED -	REVISED - R. BORO 01-01-07
	PLOT DATE = 6/12/2008	DATE - 11-04-95	REVISED - R. BORO 06-11-08

**STATE OF ILLINOIS
DEPARTMENT OF TRANSPORTATION**

DISTRICT ONE DRIVEWAY DETAILS	
DISTANCE BETWEEN ROW AND FACE OF CURB & EDGE OF SHOULDER >= 15' (4.5m)	
SCALE: NONE	SHEET NO. 10 OF 17 SHEETS
STA.	TO STA.

F.A. RTE.	SECTION	COUNTY	TOTAL SHEETS	SHEET NO.
	14-00031-00-RS	COOK	17	10
BD0156-07 BD-01		CONTRACT NO. 61B49		
FED. ROAD DIST. NO. 1 ILLINOIS FED. AID PROJECT M-4003 (433)				



CONSTRUCTION PROCEDURES

- STAGE 1 (BEFORE PAVEMENT MILLING)**
- A) REMOVE A MINIMUM OF 12 (300) OF THE PAVEMENT FROM AROUND THE STRUCTURE.
 - B) REMOVE THE EXISTING FRAME AND LID FROM THE STRUCTURE.
 - C) COVER THE STRUCTURE OPENING WITH A 36 (900) DIAMETER METAL PLATE.
 - D) BACKFILL WITH CRUSHED STONE AND A MINIMUM 1 1/2 (40) THICK HMA SURFACE MIX APPROVED BY THE ENGINEER.

- STAGE 2 (AFTER PAVEMENT MILLING)**
- A) REMOVE THE HMA SURFACE MIX AND CRUSHED STONE.
 - B) INSTALL THE FRAME AND LID; ADJUST THE FRAME TO ITS FINAL SURFACE ELEVATION.
 - C) THE SURROUNDING SPACE SHALL BE FILLED WITH CLASS PP-1* CONCRETE TO THE ELEVATION OF THE SURFACE OF THE EXISTING BASE COURSE OR THE BINDER COURSE.
- *UNLESS OTHERWISE SPECIFIED IN THE PLANS.

THE PROCEDURE EXPLAINED ABOVE SHALL CONFORM TO THE APPLICABLE PORTIONS OF SECTIONS 353, 406, 602, AND 603 OF THE STANDARD SPECIFICATIONS EXCEPT THAT "THE CONTRACTOR SHALL ADJUST THE STRUCTURES TO THE FINISHED PAVEMENT ELEVATION NO MORE THAN 5 CALENDAR DAYS PRIOR TO PLACEMENT OF THE FINAL LIFT OF SURFACE UNLESS APPROVED BY THE ENGINEER."

LEGEND

- ① SUB-BASE GRANULAR MATERIAL
- ② EXISTING PAVEMENT
- ③ 36 (900) DIAMETER METAL PLATE
- ④ PROPOSED CRUSHED STONE AND HMA SURFACE MIX
- ⑤ EXISTING STRUCTURE
- ⑥ FRAME AND LID (SEE NOTES)
- ⑦ CLASS PP-1* CONCRETE
- ⑧ PROPOSED HMA SURFACE COURSE
- ⑨ PROPOSED HMA BINDER COURSE

LOCATION OF STRUCTURES:

THE CONTRACTOR WILL BE REQUIRED TO KEEP A RECORD OF THE LOCATIONS OF THE BURIED STRUCTURES ACCORDING TO THE STATION AND DISTANCE LEFT OR RIGHT OF THE CENTERLINE OF PAVEMENT. UPON COMPLETION OF THE WORK, THE CONTRACTOR WILL DELIVER THE RECORD TO THE ENGINEER.

BASIS OF PAYMENT:

REMOVING FRAMES AND LIDS ON DRAINAGE AND UTILITY STRUCTURES IN THE PAVEMENT PRIOR TO MILLING, AND ADJUSTING TO FINAL GRADE PRIOR TO PLACING THE SURFACE COURSE, WILL BE PAID FOR AT THE CONTRACT UNIT PRICE EACH FOR "FRAMES AND LIDS TO BE ADJUSTED (SPECIAL)."

THIS WORK WILL NOT BE PAID FOR WHEN DRAINAGE AND UTILITY STRUCTURES ARE SPECIFIED FOR PAYMENT AS STRUCTURE RECONSTRUCTION.

NEW FRAMES AND LIDS, WHEN SPECIFIED, WILL BE PAID FOR SEPARATELY.

NOTES:

EXISTING BROKEN FRAMES AND LIDS SHALL BE REMOVED AND DISPOSED OF BY THE CONTRACTOR AND SHALL BE REPLACED AS DIRECTED BY THE ENGINEER. REPLACEMENT FRAMES AND LIDS WILL BE PAID FOR IN ACCORDANCE WITH ARTICLE 109.04 OF THE STANDARD SPECIFICATIONS UNLESS A SEPARATE PAY ITEM HAS BEEN PROVIDED.

IF THE EXISTING LIDS ARE OPEN, THE FRAME WILL BE ADJUSTED TO THE ELEVATION OF THE MILLED PAVEMENT SURFACE PRIOR TO THE MILLING OPERATION. THE FRAME WILL NOT BE REMOVED AND COVERED BY THE METAL PLATE.

CITY OF CHICAGO CASTINGS ARE THE PROPERTY OF THE CITY AND THE CONTRACTOR SHALL NOTIFY THE CITY FOR REMOVAL AND DISPOSITION OF THE CASTINGS.

THE METAL PLATE USED TO COVER THE STRUCTURE SHALL REMAIN THE PROPERTY OF THE CONTRACTOR.

WHEN STRUCTURES ARE TO BE ADJUSTED OR RECONSTRUCTED, THE LOWERING AND RAISING OF THE FRAMES AND LIDS WILL NOT BE PAID FOR SEPARATELY BUT WILL BE INCLUDED IN THE COST OF THE CORRESPONDING PAY ITEM.

DETAILS FOR FRAMES AND LIDS ADJUSTMENT WITH MILLING

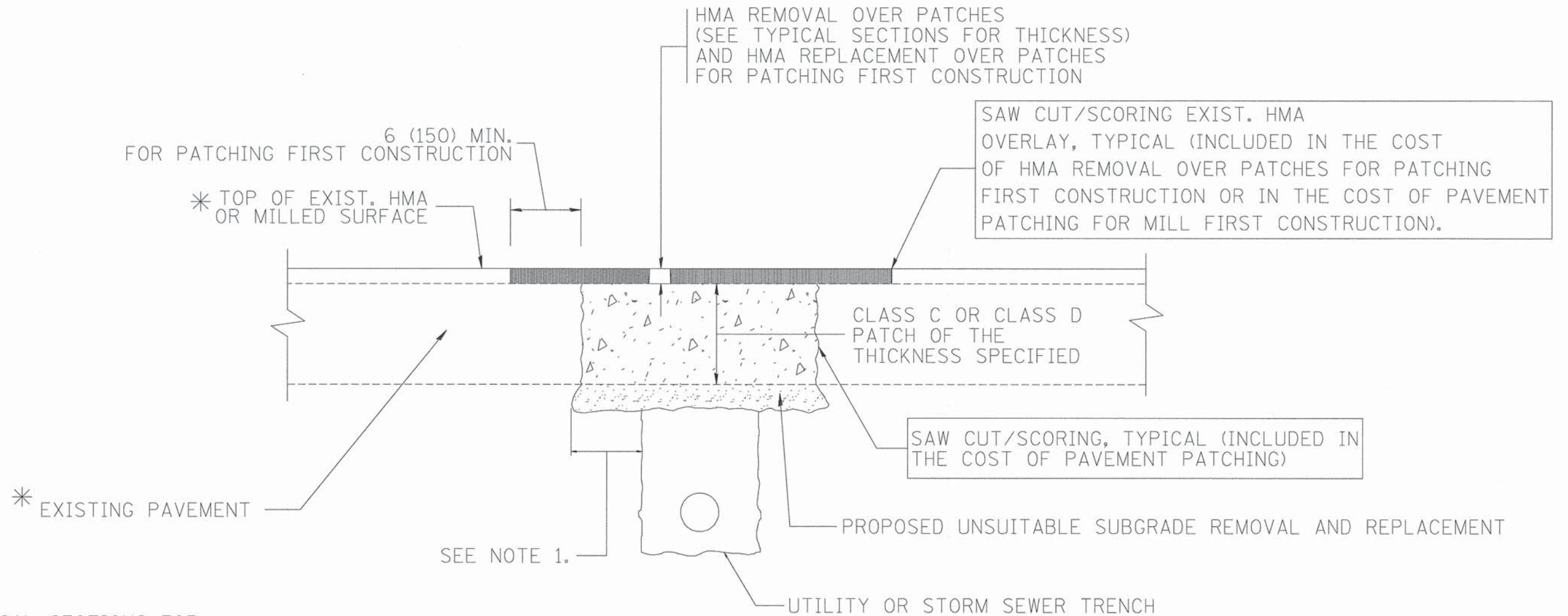
ALL DIMENSIONS ARE IN INCHES (MILLIMETERS) UNLESS OTHERWISE SHOWN

FILE NAME =	USER NAME = bauerdl	DESIGNED - R. SHAH	REVISED - R. WIEDEMAN 05-14-04
ct:\pw_work\pjsdot\bauerdl\2108315\bd08.dgn		DRAWN -	REVISED - R. BORO 01-01-07
		PLDT SCALE = 1/8" = 1'-0"	REVISED - R. BORO 03-09-11
		PLDT DATE = 12/6/2011	REVISED - R. BORO 12-06-11
		DATE - 10-25-94	

**STATE OF ILLINOIS
DEPARTMENT OF TRANSPORTATION**

DETAILS FOR FRAMES AND LIDS ADJUSTMENT WITH MILLING		
SCALE: NONE	SHEET NO. 11 OF 17 SHEETS	STA. TO STA.

F.A. RTE.	SECTION	COUNTY	TOTAL SHEETS	SHEET NO.
	14-00031-00-RS	COOK	17	11
BD600-03 (BD-8)		CONTRACT NO. 61B49		
FED. ROAD DIST. NO. 1	ILLINOIS	FED. AID PROJECT M-4003 (433)		



* SEE TYPICAL SECTIONS FOR THICKNESS AND MATERIALS

NOTES:

1. THE WIDTH OF THE FULL DEPTH PATCH OVER A TRENCH SHALL BE 12 (300) WIDER ON EACH SIDE OF THE TRENCH.
2. FOR METHOD OF MEASUREMENT AND BASIS OF PAYMENT, SEE RECURRING SPECIAL PROVISION "PATCHING WITH HOT-MIX ASPHALT OVERLAY REMOVAL".

SEQUENCE OF CONSTRUCTION (PATCHING FIRST)

1. REMOVE THE EXISTING HMA MATERIAL OVER THE AREA TO BE PATCHED.
2. REMOVE AND REPLACE WITH CLASS C OR D PATCH.
3. REPLACE HMA MATERIAL OVER THE AREA TO BE PATCHED.

SEQUENCE OF CONSTRUCTION (MILLING FIRST)

1. MILL HMA FIRST IF THERE IS AT LEAST 4 1/2 INCHES OR MORE OF HMA MATERIAL ON TOP OF THE EXISTING PAVEMENT OR IF THE PAVEMENT IS FULL DEPTH HMA. A MINIMUM OF 2 INCHES OF HMA MATERIAL SHALL BE IN PLACE AFTER MILLING.
2. REMOVE AND REPLACE WITH FULL DEPTH CLASS D PATCHES TO TOP OF MILLED SURFACE.

ALL DIMENSIONS ARE IN INCHES (MILLIMETERS) UNLESS OTHERWISE SHOWN.

FILE NAME = ct\projects\diststd22x34\bd22.dgn	USER NAME = bauerdl	DESIGNED - R. SHAH	REVISED - A. ABBAS 04-27-98	STATE OF ILLINOIS DEPARTMENT OF TRANSPORTATION	DISTRICT ONE PAVEMENT PATCHING FOR HMA SURFACED PAVEMENT			F.A. RTE.	SECTION	COUNTY	TOTAL SHEETS	SHEET NO.
		DRAWN -	REVISED - R. BORO 01-01-07		SCALE: NONE	SHEET NO. 12 OF 17 SHEETS	STA.	TO STA.	14-00031-00-RS	COOK	17	12
		PLOT SCALE = 50.000' / IN.	REVISED - R. BORO 09-04-07		BD400-04 (BD-22)		CONTRACT NO. 61B49					
		PLOT DATE = 10/27/2008	REVISED - K. ENG 10-27-08		FED. ROAD DIST. NO. 1 ILLINOIS FED. AID PROJECT M-4003 (433)							

VARIABLE - TO MEET EXISTING DIMENSIONS AND FIELD CONDITIONS (SEE NOTE ②)

PROP. CONC. CURB OR CURB AND GUTTER REPLACEMENT IN ACCORDANCE WITH STATE STANDARD 606001. (SEE NOTE ②)

SAW CUT FULL DEPTH - INCLUDED IN THE COST OF SIDEWALK, DRIVEWAY OR MEDIAN SURFACE REMOVAL PAY ITEM.

SEE STATE STANDARD 606001
EXISTING OR PROPOSED HMA SURFACE (IF APPLICABLE)

18" (450) MAX.

1/4" (5) **

EXISTING SIDEWALK, DRIVEWAY, MEDIAN SURFACE, SOD OR GROUND.

PROPOSED SIDEWALK, DRIVEWAY PAVEMENT, MEDIAN SURFACE OR SODDING SALT TOLERANT WITH TOP SOIL, 4" (100) SOD RESTORATION (SEE NOTE ①).

EXISTING CONCRETE PAVEMENT, CONCRETE BASE COURSE OR FLEXIBLE PAVEMENT

3" (75) MIN.

SUITABLE BACKFILL MATERIAL (INCLUDED IN THE COST OF CURB OR CURB AND GUTTER REMOVAL AND REPLACEMENT)

PROPOSED 3/4" (20) PREFORMED EXPANSION JOINT AT CONCRETE SIDEWALKS, DRIVEWAYS, AND MEDIANS. (INCLUDED IN THE COST OF CURB OR CURB AND GUTTER REMOVAL AND REPLACEMENT.)

- * 3" (75) MINIMUM FROM TOP AND BOTTOM OF THE CONCRETE PAVEMENT OR BASE COURSE.
- ** IF THE FINAL SURFACE OF THE PAVEMENT IS CONCRETE, THE GUTTER IS TO BE FLUSH WITH THE PAVEMENT.

UNSUITABLE SUB-BASE MATERIAL TO BE REMOVED, IF DIRECTED BY THE ENGINEER, SHALL BE REPLACED WITH EITHER SUB-BASE GRANULAR MATERIAL, TYPE B OR ADDITIONAL THICKNESS OF CONCRETE.

NOTE: ① SIDEWALK, DRIVEWAY PAVEMENT OR MEDIAN SURFACE SHALL BE SIMILAR TO THE MATERIAL BEING REMOVED AND WILL BE PAID FOR SEPARATELY.
SODDING, SPECIAL AND TOP SOIL, FURNISH AND PLACE 4" WILL BE PAID FOR SEPARATELY.

REMOVAL AND REPLACEMENT 4" (100) OR LESS IS INCLUDED IN THE COST OF CURB OR CURB AND GUTTER REMOVAL AND REPLACEMENT.

② FERTILIZER FOR THE PLACEMENT OF THE SOD IS NOT REQUIRED

REMOVAL AND REPLACEMENT IN EXCESS OF 4" (100) WILL BE PAID FOR IN ACCORDANCE WITH ARTICLE 109.04 OF THE STANDARD SPECIFICATIONS.

③ CURB OR CURB AND GUTTER REPLACEMENT SHALL MATCH THE SHAPE OF THE EXISTING CURB OR CURB AND GUTTER UNLESS OTHERWISE SPECIFIED.

PROPOSED #6 (20) EPOXY COATED TIE BARS 24" (600) LONG AT 24" (600) CENTERS WILL NOT BE PAID FOR SEPARATELY. DELETE EPOXY COATED TIE BARS IF EXISTING TIE BARS ARE USABLE AS DETERMINED BY THE ENGINEER. (SEE NOTE ③).

④ FOR CURB OR CURB AND GUTTER REMOVAL AND REPLACEMENT ADJACENT TO FLEXIBLE PAVEMENT DELETE EPOXY COATED TIE BARS.

⑤ LONGITUDINAL BARS, IF ENCOUNTERED IN THE EXISTING CURB OR CURB AND GUTTER, ARE NOT TO BE REPLACED. CUTTING AND REMOVING LONGITUDINAL BARS SHALL BE INCLUDED IN THE COST OF CURB OR CURB AND GUTTER REMOVAL AND REPLACEMENT.

⑥ THE COST OF HMA SURFACE REMOVAL IN THE EXISTING GUTTER FLAG SHALL BE INCLUDED IN THE COST OF THE CURB AND GUTTER REMOVAL AND REPLACEMENT.

BASIS OF PAYMENT:

THIS WORK WILL BE PAID FOR AT THE CONTRACT UNIT PRICE PER FOOT (METER) FOR "CURB REMOVAL AND REPLACEMENT" OR "COMBINATION CONCRETE CURB AND GUTTER REMOVAL AND REPLACEMENT".

⑦ THE REMOVAL AND REPLACEMENT OF THE EXISTING CURB OR CURB AND GUTTER SHALL BE DONE IN ACCORDANCE WITH THE APPLICABLE PORTIONS OF SECTION 440 AND 606 OF THE STANDARD SPECIFICATIONS.

⑧ THE LOCATIONS OF REMOVAL AND REPLACEMENT OF EXISTING CURB OR CURB AND GUTTER SHALL BE DETERMINED BY THE RESIDENT ENGINEER AT THE TIME OF CONSTRUCTION.

CURB OR CURB AND GUTTER REMOVAL AND REPLACEMENT

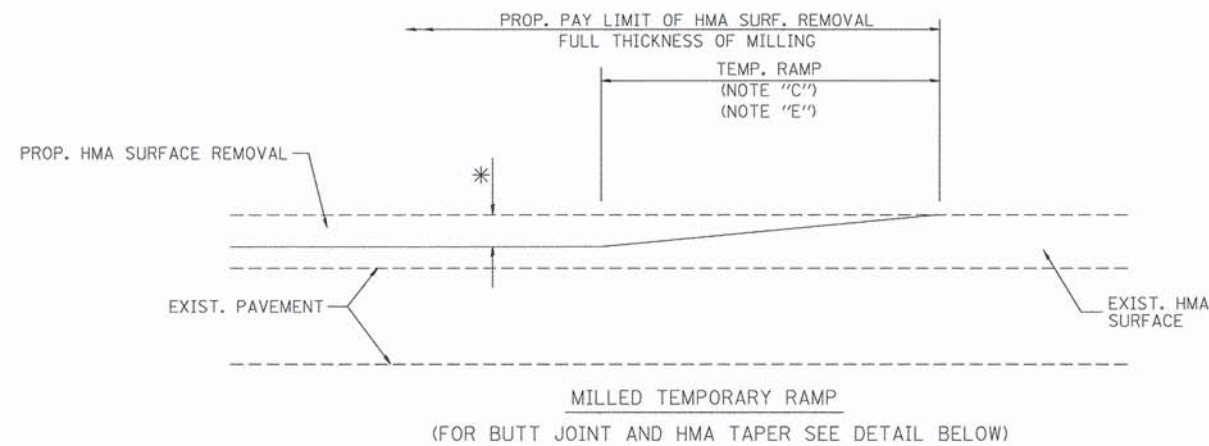
ALL DIMENSIONS ARE IN INCHES (MILLIMETERS) UNLESS OTHERWISE SHOWN.

FILE NAME =	USER NAME = drivakosgn	DESIGNED - A. HOUSEH	REVISED - R. SHAH 10-03-96
es:\pw\work\p\dot\drivakosgn\d0108315\bd24.dgn		DRAWN -	REVISED - A. ABBAS 03-21-97
	PLOT SCALE = 50.0000' / 1"	CHECKED -	REVISED - M. GOMEZ 01-22-01
	PLOT DATE = 12/15/2009	DATE - 03-11-94	REVISED - R. BORO 12-15-09

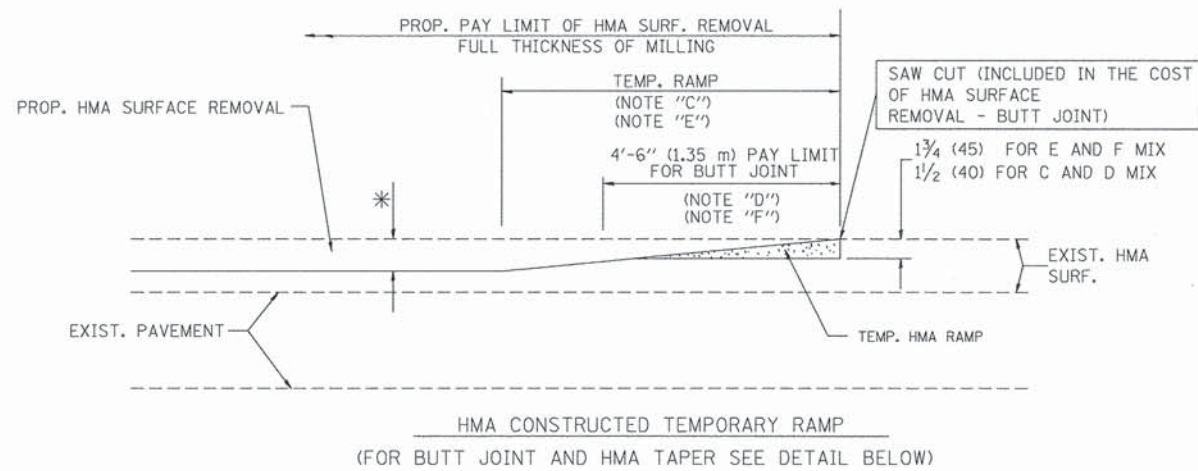
STATE OF ILLINOIS
DEPARTMENT OF TRANSPORTATION

CURB OR CURB AND GUTTER REMOVAL AND REPLACEMENT	
SCALE: NONE	SHEET NO. 13 OF 17 SHEETS
STA.	TO STA.

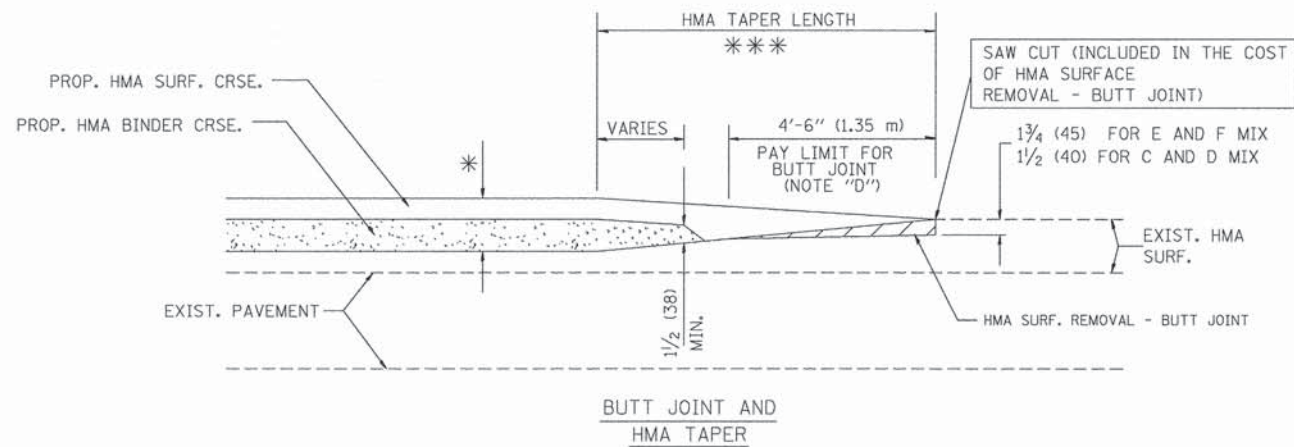
F.A. RTE.	SECTION	COUNTY	TOTAL SHEETS	SHEET NO.
	14-00031-00-RS	COOK	17	13
BD600-06 (BD-24)		CONTRACT NO. 61B49		
FED. ROAD DIST. NO. 1	ILLINOIS	FED. AID PROJECT M-4003 (433)		



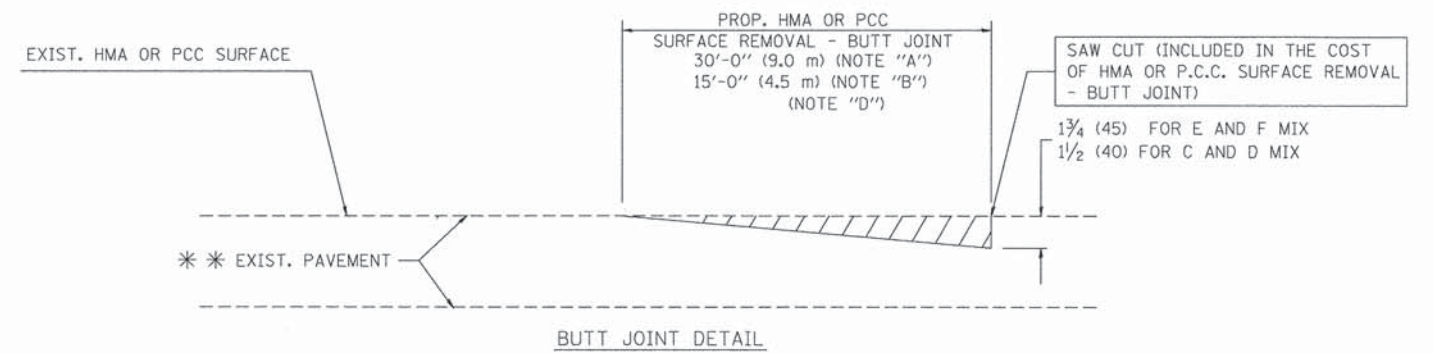
OPTION 1



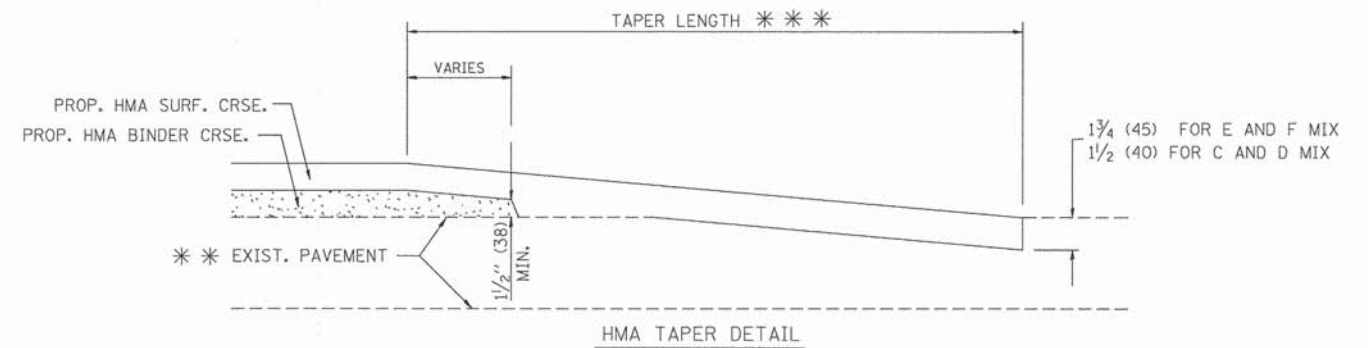
OPTION 2
TYPICAL TEMPORARY RAMP



TYPICAL BUTT JOINT AND HMA TAPER
FOR MILLING AND RESURFACING



BUTT JOINT DETAIL



HMA TAPER DETAIL

TYPICAL BUTT JOINT AND HMA TAPER
FOR RESURFACING ONLY

*** PC CONCRETE, HMA OR HMA RESURFACED PAVEMENT.

NOTES

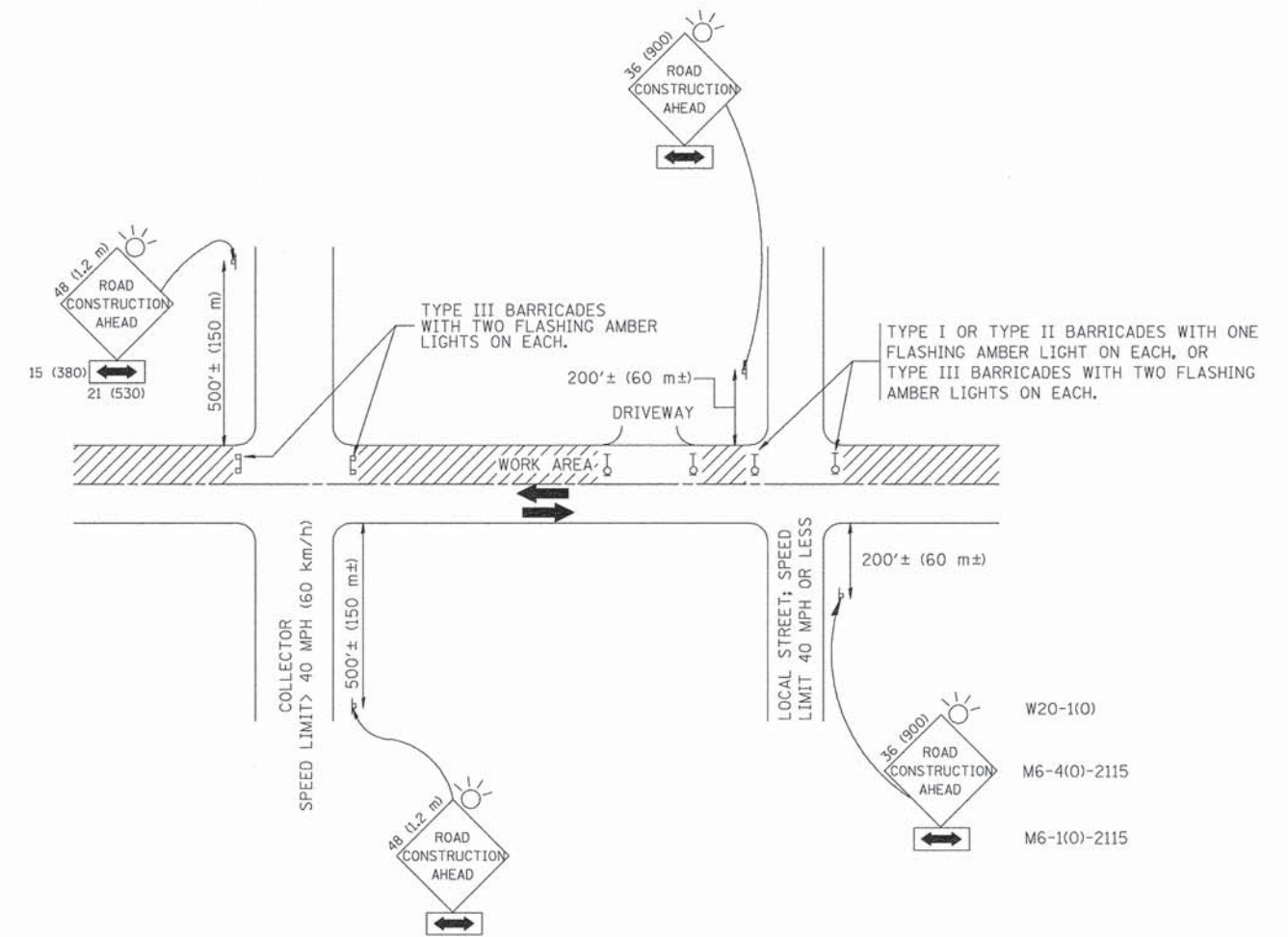
- A: MAINLINE ROADWAYS AND MAJOR SIDE ROADS.
 - B: MINOR SIDE ROADS.
 - C: THE TEMP. RAMP SHALL BE CONSTRUCTED IMMEDIATELY UPON REMOVAL OF THE EXISTING HMA SURFACE.
 - D: THE BUTT JOINT SHALL BE CONSTRUCTED IMMEDIATELY PRIOR TO PLACING THE PROPOSED HMA COURSES.
 - E: TAPER THE TEMP. RAMP AT A RATE OF 3'-0" (900 mm) PER 1 INCH (25 mm) OF MILLING THICKNESS.
 - F: INSTALLATION AND REMOVAL OF THE 4'-6" (1.35 m) TEMP. RAMP IS INCLUDED IN COST OF HMA SURFACE REMOVAL - BUTT JOINT
 - G: SEE ARTICLE 406.08 AND 406.14 OF THE STANDARD SPECIFICATIONS FOR "HMA AND/OR PCC SURFACE REMOVAL, BUTT JOINT".
- * SEE TYPICAL SECTIONS FOR MILLING THICKNESS.
- *** 20'-0" (6.1 m) PER 1 (25) RESURFACING (NOTE "A")
10'-0" (3.0 m) PER 1 (25) RESURFACING (NOTE "B")

BASIS OF PAYMENT:

THE BUTT JOINT WILL BE PAID FOR AT THE CONTRACT UNIT PRICE PER SQUARE YARD (SQUARE METER) FOR "HOT-MIX ASPHALT SURFACE REMOVAL - BUTT JOINT" OR FOR "PORTLAND CEMENT CONCRETE SURFACE REMOVAL - BUTT JOINT".

ALL DIMENSIONS ARE IN INCHES (MILLIMETERS) UNLESS OTHERWISE SHOWN.

FILE NAME = W:\diststd\22x34\bd32.dgn	USER NAME = gegl:anobt	DESIGNED - M. DE YONG	REVISED - R. SHAH 10-25-94	STATE OF ILLINOIS DEPARTMENT OF TRANSPORTATION	DISTRICT ONE BUTT JOINT AND HMA TAPER DETAILS			F.A. RTE.	SECTION	COUNTY	TOTAL SHEETS	SHEET NO.
	PLOT SCALE = 50.0000' / IN.	DRAWN -	REVISED - A. ABBAS 03-21-97		SCALE: NONE			14-00031-00-RS	COOK	17	14	
	PLOT DATE = 1/4/2008	CHECKED -	REVISED - M. GOMEZ 04-06-01		SHEET NO. 14 OF 17 SHEETS			BD400-05 BD32	CONTRACT NO. 61B49			
		DATE - 06-13-90	REVISED - R. BORO 01-01-07		STA. TO STA.			FED. ROAD DIST. NO. 1	ILLINOIS	FED. AID PROJECT M-4003 (433)		



TRAFFIC CONTROL AND PROTECTION FOR SIDE ROADS, INTERSECTIONS, AND DRIVEWAYS

NOTES:

- A. FOR NO LANE RESTRICTION ON THE SIDE ROAD OR DRIVEWAYS
 1. SIDE ROAD WITH A SPEED LIMIT OF 40 MPH (60 km/h) OR LESS AS SHOWN ON THE DRAWING AND AS DIRECTED BY THE ENGINEER:
 - a) ONE **ROAD CONSTRUCTION AHEAD** SIGN 36 x 36 (900x900) WITH A FLASHER AND FLAG MOUNTED ON IT APPROXIMATELY 200' (60 m) IN ADVANCE OF THE MAIN ROUTE.
 - b) THE CLOSED PORTION OF THE MAIN ROUTE SHALL BE PROTECTED BY BLOCKING WITH TYPE I, TYPE II OR TYPE III BARRICADES, 1/3 OF THE CROSS SECTION OF THE CLOSED PORTION.
 2. SIDE ROAD WITH A SPEED LIMIT GREATER THAN 40 MPH (60 km/h) AS SHOWN ON THE DRAWING AND AS DIRECTED BY THE ENGINEER:
 - a) ONE **ROAD CONSTRUCTION AHEAD** SIGN 48 x 48 (1.2 m x 1.2 m) WITH A FLASHER MOUNTED ON IT APPROXIMATELY 500' (150 m) IN ADVANCE OF THE MAIN ROUTE.
 - b) THE CLOSED PORTION OF THE MAIN ROUTE SHALL BE PROTECTED BY BLOCKING WITH TYPE III BARRICADES, 1/2 OF THE CROSS SECTION OF THE CLOSED PORTION.
 3. WHEN THE SIDE ROAD LIES BETWEEN THE BEGINNING OF THE MAINLINE SIGNING AND THE WORK ZONE, A SINGLE HEADED ARROW (M6-1) SHALL BE USED IN LIEU OF THE DOUBLE HEADED ARROW (M6-4).
- B. FOR A LANE CLOSURE ON A SIDE ROAD OR DRIVEWAY:

USE APPLICABLE PORTIONS OF THE TYPICAL APPLICATION OF TRAFFIC CONTROL DEVICES (STD. 701501, STD. 701606 OR THE APPROPRIATE STANDARD). THE SPACING OF SIGNS AND BARRICADES SHALL BE ADJUSTED FOR FIELD CONDITIONS AS DIRECTED BY THE ENGINEER. THE DIRECTIONAL ARROW SHALL BE COVERED OR REMOVED WHEN NO LONGER CONSISTENT WITH THE SIDE ROAD LANE CLOSURE.
- C. ADVANCE WARNING SIGNS ARE TO BE OMITTED ON DRIVEWAY UNLESS OTHERWISE NOTED.
- D. THE TRAFFIC CONTROL AND PROTECTION FOR SIDE ROADS, INTERSECTIONS, AND DRIVEWAYS SHALL BE INCIDENTAL TO THE COST OF SPECIFIED TRAFFIC CONTROL STANDARDS OR ITEMS.

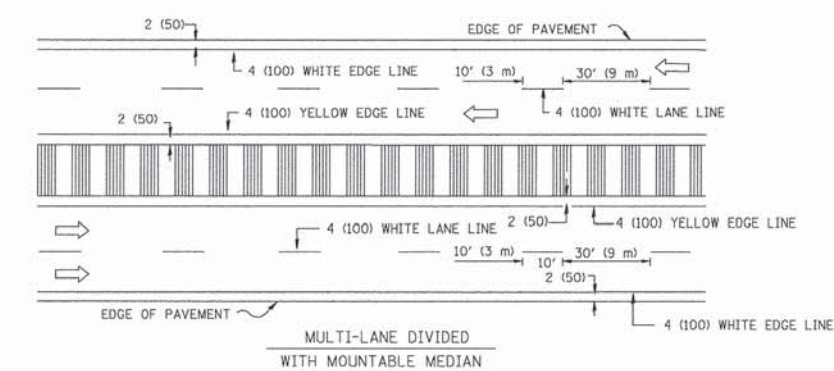
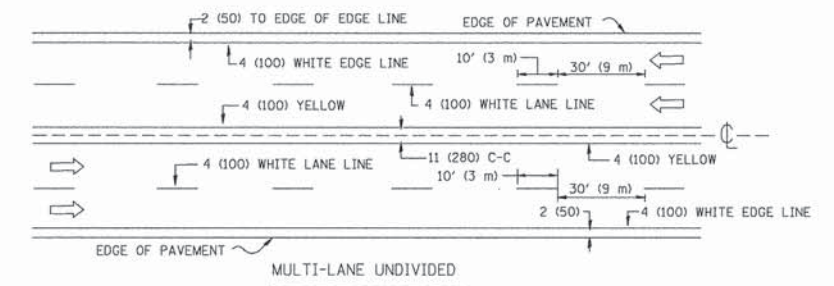
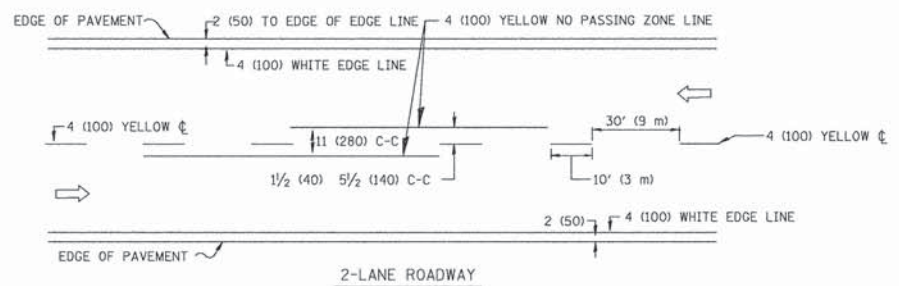
All dimensions are in millimeters (inches) unless otherwise shown.

FILE NAME = W:\diststd\22x34\tcl8.dgn	USER NAME = goglianob	DESIGNED - LHA	REVISED - J. OBERLE 10-18-95
		DRAWN -	REVISED - A. HOUSEH 03-06-96
		PLOT SCALE = 58.0000' / IN.	REVISED - A. HOUSEH 10-15-96
		PLOT DATE = 1/4/2008	REVISED - T. RAMMACHER 01-06-00
		DATE - 06-89	

STATE OF ILLINOIS
DEPARTMENT OF TRANSPORTATION

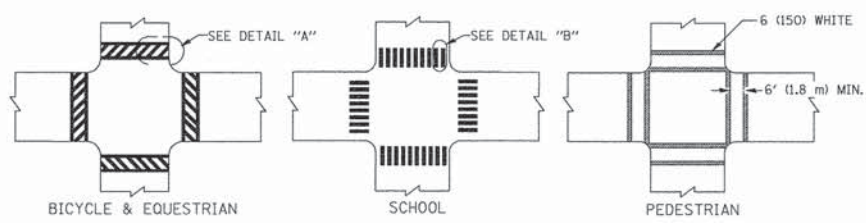
DISTRICT ONE	
TRAFFIC CONTROL AND PROTECTION FOR	
SIDE ROADS, INTERSECTIONS, AND DRIVEWAYS	
SCALE: NONE	SHEET NO. 15 OF 17 SHEETS
STA. TO STA.	

F.A. RTE.	SECTION	COUNTY	TOTAL SHEETS	SHEET NO.
	14-00031-00-RS	COOK	17	15
TC-10		CONTRACT NO. 61B49		
FED. ROAD DIST. NO. 1	ILLINOIS	FED. AID PROJECT M-4003 (433)		

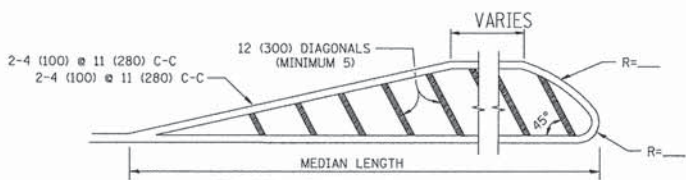
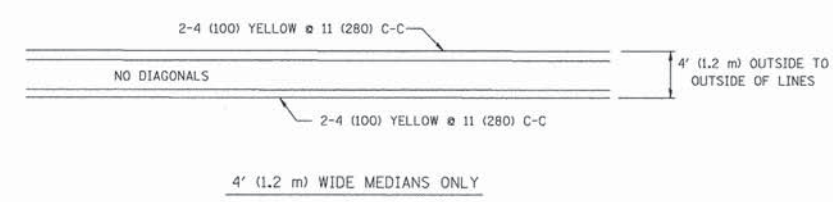


NOTE: MEDIANS WITH BARRIER CURB DO NOT REQUIRE AN EDGE LINE

TYPICAL LANE AND EDGE LINE MARKING



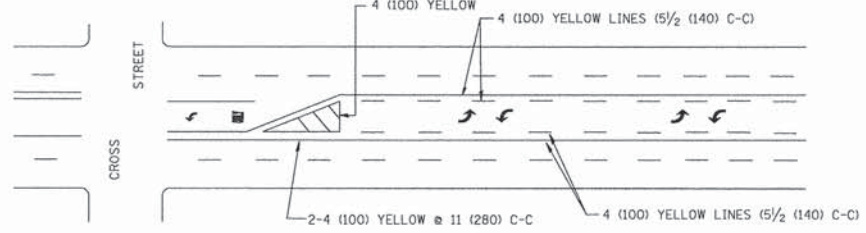
TYPICAL CROSSWALK MARKING



FOR MEDIAN LENGTHS WHERE DIAGONAL SPACING CANNOT BE ATTAINED, USE 5 (FIVE) EQUALLY SPACED DIAGONAL LINES.

DIAGONAL LINE SPACING: 50' (15 m) C-C (LESS THAN 30MPH (50 km/h))
75' (25 m) C-C 30MPH (50 km/h) TO 45MPH (70 km/h)
150' (45 m) C-C (MORE THAN 45MPH (70 km/h))

MEDIANS OVER 4' (1.2 m) WIDE

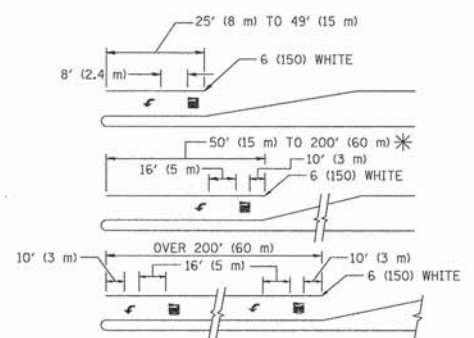


A MINIMUM OF TWO PAIRS OF TURN ARROWS SHALL BE USED, WHITE IN COLOR. ADDITIONAL PAIRS SHALL BE PLACED AT 200' (60 m) TO 300' (90 m) INTERVALS.



MEDIAN WITH TWO-WAY LEFT TURN LANE

TYPICAL PAINTED MEDIAN MARKING

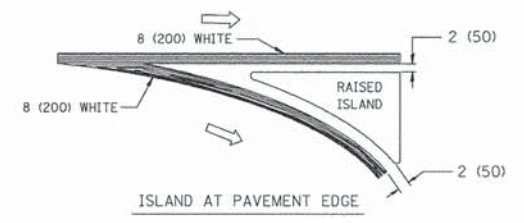
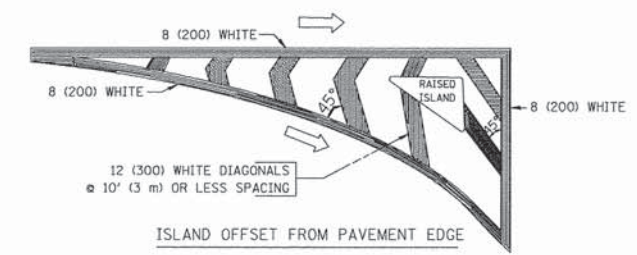


FULL SIZE LETTERS 8' (2.4 m) AND ARROWS SHALL BE USED.
AREA = 15.6 SQ. FT. (1.5 m²) ONLY AREA = 20.8 SQ. FT. (1.9 m²)

* TURN LANES IN EXCESS OF 400' (120 m) IN LENGTH MAY HAVE AN ADDITIONAL SET OF ARROW - "ONLY" INSTALLED MIDWAY BETWEEN THE OTHER TWO SETS OF ARROW - "ONLY".

TYPICAL LEFT (OR RIGHT) TURN LANE

TYPICAL TURN LANE MARKING



TYPICAL ISLAND MARKING

TYPE OF MARKING	WIDTH OF LINE	PATTERN	COLOR	SPACING / REMARKS
CENTERLINE ON 2 LANE PAVEMENT	4 (100)	SKIP-DASH	YELLOW	10' (3 m) LINE WITH 30' (9 m) SPACE
CENTERLINE ON MULTI-LANE UNDIVIDED PAVEMENT	2 @ 4 (100)	SOLID	YELLOW	11 (280) C-C
NO PASSING ZONE LINES: FOR ONE DIRECTION	4 (100)	SOLID	YELLOW	5 1/2 (140) C-C FROM SKIP-DASH CENTERLINE
NO PASSING ZONE LINES: FOR BOTH DIRECTIONS	2 @ 4 (100)	SOLID	YELLOW	11 (280) C-C OMIT SKIP-DASH CENTERLINE BETWEEN
LANE LINES	4 (100)	SKIP-DASH	WHITE	10' (3 m) LINE WITH 30' (9 m) SPACE
LANE LINES	5 (125) ON FREEWAYS	SKIP-DASH	WHITE	
DOTTED LINES (EXTENSIONS OF CENTER, LANE OR TURN LANE MARKINGS)	SAME AS LINE BEING EXTENDED	SKIP-DASH	SAME AS LINE BEING EXTENDED	2' (600) LINE WITH 6' (1.8 m) SPACE
EDGE LINES	4 (100)	SOLID	YELLOW-LEFT WHITE-RIGHT	OUTLINE MOUNTABLE MEDIANS IN YELLOW; EDGE LINES ARE NOT USED NEXT TO BARRIER CURB
TURN LANE MARKINGS	6 (150) LINE; FULL SIZE LETTERS & SYMBOLS (8' (2.4m))	SOLID	WHITE	SEE TYPICAL TURN LANE MARKING DETAIL
TWO WAY LEFT TURN MARKING	2 @ 4 (100) EACH DIRECTION	SKIP-DASH AND SOLID	YELLOW	10' (3 m) LINE WITH 30' (9 m) SPACE FOR SKIP-DASH; 5 1/2 (140) C-C BETWEEN SOLID LINE AND SKIP-DASH LINE
TWO WAY LEFT TURN MARKING	8' (2.4m) LEFT ARROW	IN PAIRS	WHITE	SEE TYPICAL TWO-WAY LEFT TURN MARKING DETAIL
CROSSWALK LINES (PEDESTRIAN)	2 @ 6 (150)	SOLID	WHITE	NOT LESS THAN 6' (1.8 m) APART
A. DIAGONALS (BIKE & EQUESTRIAN)	12 (300) @ 45°	SOLID	WHITE	2' (600) APART
B. LONGITUDINAL BARS (SCHOOL)	12 (300) @ 90°	SOLID	WHITE	2' (600) APART
STOP LINES	24 (600)	SOLID	WHITE	PLACE 4' (1.2 m) IN ADVANCE OF AND PARALLEL TO CROSSWALK, IF PRESENT. OTHERWISE, PLACE AT DESIRED STOPPING POINT, PARALLEL TO CROSSROAD CENTERLINE, WHERE POSSIBLE
PAINTED MEDIANS	2 @ 4 (100) WITH 12 (300) DIAGONALS @ 45°	SOLID	YELLOW: TWO WAY TRAFFIC WHITE: ONE WAY TRAFFIC	11 (280) C-C FOR THE DOUBLE LINE SEE TYPICAL PAINTED MEDIAN MARKING.
NO DIAGONALS USED FOR 4' (1.2 m) WIDE MEDIANS				
GORE MARKING AND CHANNELIZING LINES	8 (200) WITH 12 (300) DIAGONALS @ 45°	SOLID	WHITE	DIAGONALS: 15' (4.5 m) C-C (LESS THAN 30MPH (50 km/h)) 20' (6 m) C-C 30MPH (50 km/h) TO 45MPH (70 km/h) 30' (9 m) C-C (OVER 45MPH (70 km/h))
RAILROAD CROSSING	24 (600) TRANSVERSE LINES; "RR" 15 6' (1.8 m) LETTERS; 16 (400) LINE FOR "X"	SOLID	WHITE	SEE STATE STANDARD 780001 AREA OF: "R"=3.6 SQ. FT. (0.33 m ²) EACH "X"=54.0 SQ. FT. (5.0 m ²)
SHOULDER DIAGONALS	12 (300) @ 45°	SOLID	WHITE - RIGHT YELLOW - LEFT	50' (15 m) C-C (LESS THAN 30MPH (50 km/h)) 75' (25 m) C-C 30 MPH (50 km/h) TO 45MPH (70 km/h) 150' (45 m) C-C (OVER 45MPH (70 km/h))

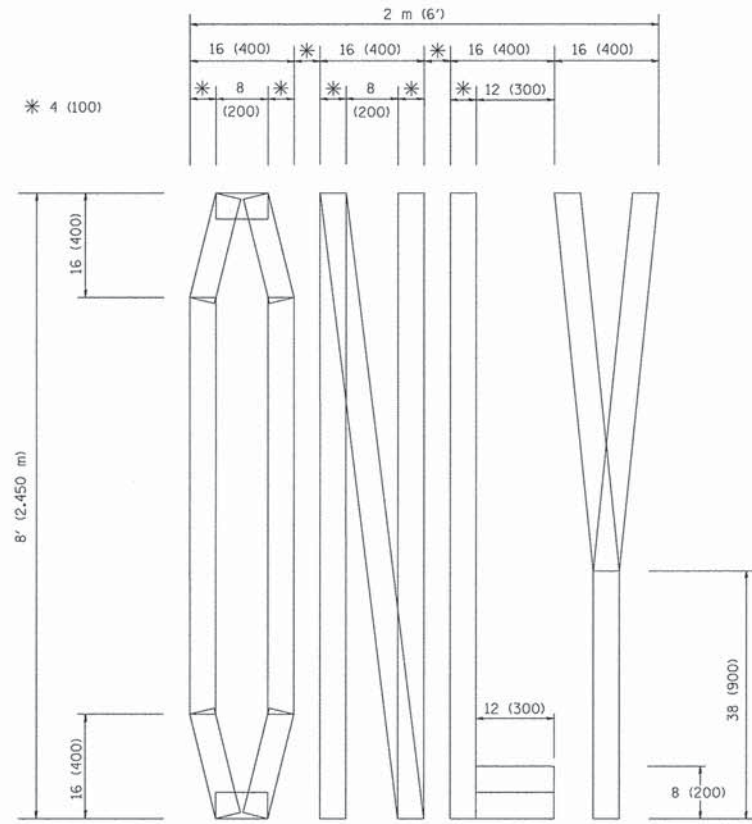
FOR FURTHER DETAILS ON PAVEMENT MARKING REFER TO STANDARD SPECIFICATIONS FOR ROAD AND BRIDGE CONSTRUCTION AND STATE STANDARD 780001.

All dimensions are in inches (millimeters) unless otherwise shown.

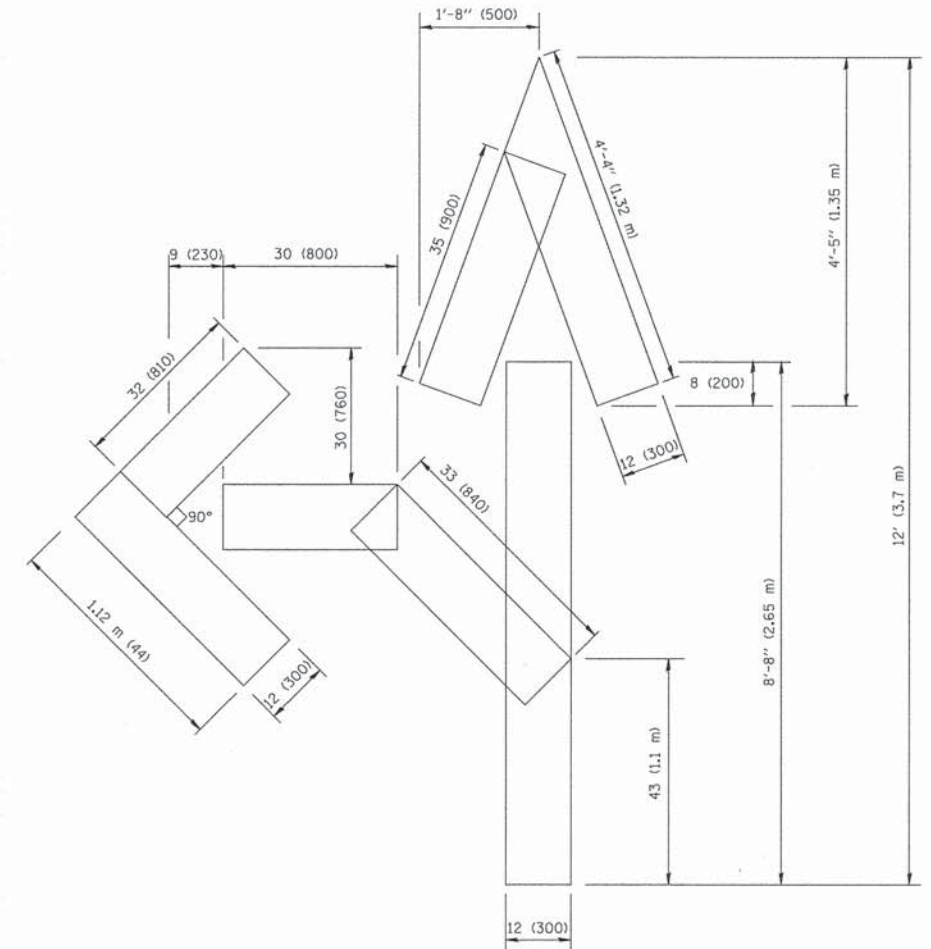
FILE NAME =	USER NAME = drlvakosgn	DESIGNED - EVERS	REVISED - T. RAMMACHER 10-27-94
al:\pw\work\p\dot\drlvakosgn\d0108315\to3.dgn		DRAWN -	REVISED - C. JUCIUS 09-09-09
	PLOT SCALE = 50.000 / IN.	CHECKED -	REVISED -
	PLOT DATE = 9/9/2009	DATE - 03-19-90	REVISED -

STATE OF ILLINOIS
DEPARTMENT OF TRANSPORTATION

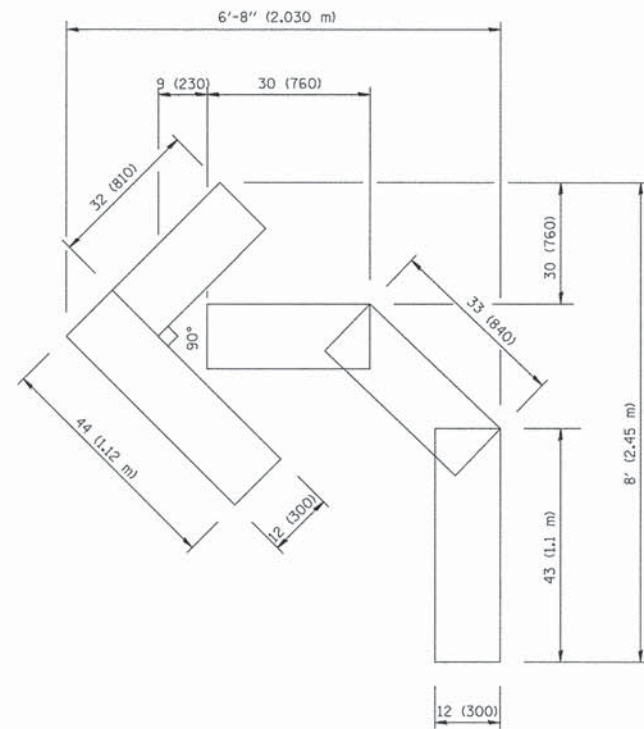
DISTRICT ONE		F.A. RTE.	SECTION	COUNTY	TOTAL SHEETS	SHEET NO.
TYPICAL PAVEMENT MARKINGS			14-00031-00-RS	COOK	17	16
SCALE: NONE		SHEET NO. 16 OF 17 SHEETS		STA. TO STA.		
		TC-13		CONTRACT NO. 61B49		
		FED. ROAD DIST. NO. 1		ILLINOIS		FED. AID PROJECT M-4003 (433)



QUANTITY
 4 (100) LINE = 64.1 ft. (19.7 m)
 21.1 sq. ft. (1.97 sq. m)



QUANTITY
 4 (100) LINE = 82.5 ft. (25.3 m)
 27.5 sq. ft. (2.53 sq. m)



QUANTITY
 4 (100) LINE = 45.5 ft. (13.9 m)
 15.2 sq. ft. (1.39 sq. m)

All dimensions are in inches (millimeters) unless otherwise shown.

FILE NAME = W:\dststd\22x34\to16.dgn	USER NAME = goglianobt	DESIGNED -	REVISED -T. RAMMACHER 06-05-96
		DRAWN -	REVISED -T. RAMMACHER 11-04-97
	PLOT SCALE = 50.0000' / IN.	CHECKED -	REVISED -T. RAMMACHER 03-02-98
	PLOT DATE = 1/4/2008	DATE = 09-18-94	REVISED -E. GOMEZ 08-28-00

STATE OF ILLINOIS
 DEPARTMENT OF TRANSPORTATION

DISTRICT ONE - PAVEMENT MARKING LETTERS AND
 SYMBOLS FOR TRAFFIC STAGING

SCALE: NONE SHEET NO. 17 OF 17 SHEETS STA. TO STA.

F.A. RTE.	SECTION	COUNTY	TOTAL SHEETS	SHEET NO.
	14-00031-00-RS	COOK	17	17
TC-16			CONTRACT NO. 61B49	
FED. ROAD DIST. NO. 1	ILLINOIS	FED. AID PROJECT M-4003 (433)		