

STATE OF ILLINOIS
DEPARTMENT OF TRANSPORTATION
DIVISION OF HIGHWAYS

**PROPOSED
HIGHWAY PLANS**

FAP ROUTE 607: US 52 (JEFFERSON ST)
OVER DUPAGE RIVER (SN 099-0276)
SECTION: 128B-BR(14)
BRIDGE REPAIR
WILL COUNTY

C-91-194-15

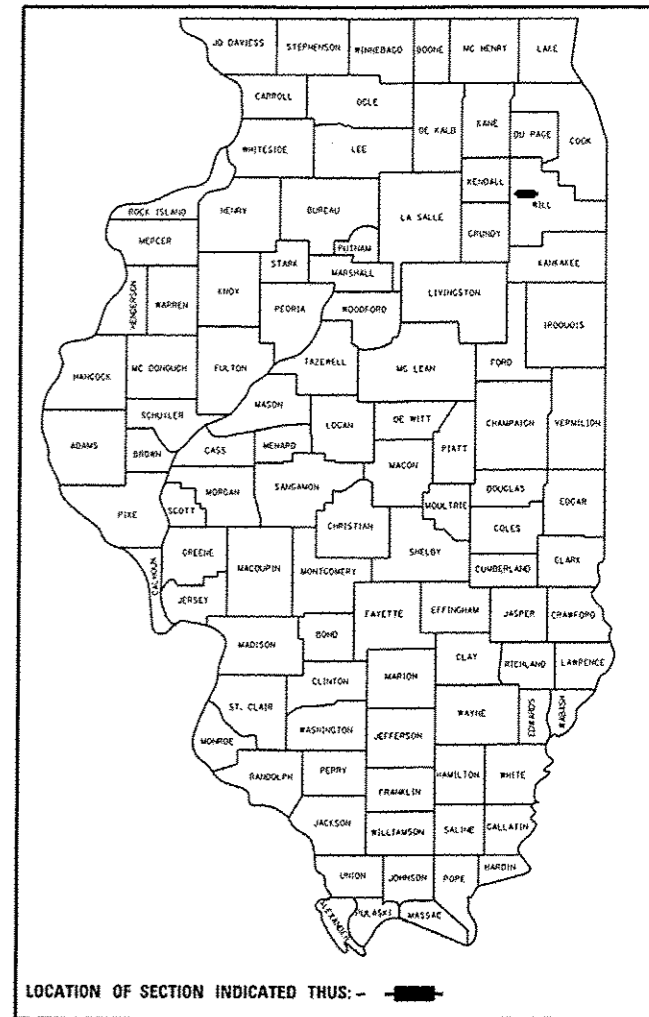
F.A.P. RTE.	SECTION	COUNTY	TOTAL SHEETS	SHEET NO.
607	128B-BR(14)	WILL	14	1
		ILLINOIS	CONTRACT NO. 62A44	

D-91-194-15

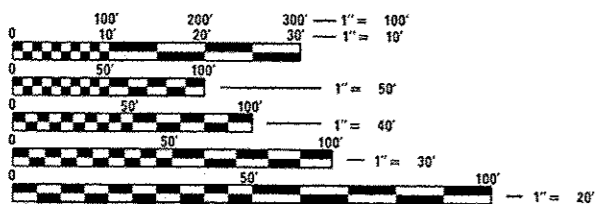
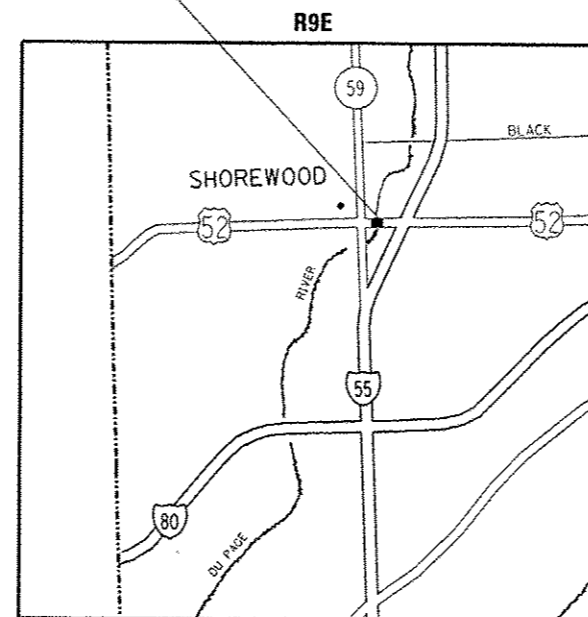
FOR INDEX OF SHEETS, SEE SHEET NO. 2

THE IMPROVEMENT IS LOCATED
IN THE VILLAGE OF SHOREWOOD

TRAFFIC DATA
2013 ADT = 26,100
POSTED SPEED = 40 MPH



LOCATION OF IMPROVEMENT
SN 099-0276



FULL SIZE PLANS HAVE BEEN PREPARED USING STANDARD
ENGINEERING SCALES. REDUCED SIZED PLANS WILL NOT
CONFORM TO STANDARD SCALES. IN MAKING MEASUREMENTS
ON REDUCED PLANS, THE ABOVE SCALES MAY BE USED.

J.U.L.I.E.
JOINT UTILITY LOCATION INFORMATION FOR EXCAVATION
1-800-892-0123
OR 811

PROJECT ENGINEER: J. ALAIN MIDY (847)-221-3056
PROJECT MANAGER: ISSAM RAYYAN
CONTRACT NO. 62A44

GROSS LENGTH = 655.00 FT. = 0.124 MILE
NET LENGTH = 655.00 FT. = 0.124 MILE

STATE OF ILLINOIS
DEPARTMENT OF TRANSPORTATION
DIVISION OF HIGHWAYS

SUBMITTED March 31 20 15

John F. Vroman
DEPUTY DIRECTOR OF HIGHWAYS, REGION ENGINEER

May 8 20 15
John D. Baranzelli P.E.
ENGINEER OF DESIGN AND ENVIRONMENT

May 8 20 15
Omer Osman P.E.
DIRECTOR OF HIGHWAYS, CHIEF ENGINEER

PRINTED BY THE AUTHORITY
OF THE STATE OF ILLINOIS

INDEX OF SHEETS

- 1 COVER SHEET
- 2 INDEX OF SHEETS, STATE STANDARDS, AND GENERAL NOTES
- 3 SUMMARY OF QUANTITIES
- 4-6 SUGGESTED STAGES OF CONSTRUCTION
- 7-9 SN 099-0276 REPAIR DETAILS
- 10 PAVEMENT MARKING DETAILS
- 11 CURB OR CURB AND GUTTER REMOVAL AND REPLACEMENT (BD-24)
- 12 TRAFFIC CONTROL AND PROTECTION FOR SIDE ROADS, INTERSECTIONS, AND DRIVEWAYS. (TC-10)
- 13 TYPICAL PAVEMENT MARKINGS (TC-13)
- 14 ARTERIAL ROAD INFORMATION SIGN (TC-22)

STATE STANDARDS

- 701427-03 LANE CLOSURE, MULTI LANE, INTERMITTENT OR MOVING OPER., FOR SPEEDS < 40 MPH
- 701601-09 URBAN LANE CLOSURE, MULTILANE, 1W OR 2W WITH NONTRAVERSABLE MEDIAN
- 701606-10 Urban Single Lane Closure, Multilane, 2W with Mountable Median
- 701701-09 Urban Lane Closure, Multilane Intersection
- 701801-05 Lane Closure, Multilane 1W or 2W Crosswalk or Sidewalk Closure
- 701901-04 Traffic Control Devices

GENERAL NOTES

1. BEFORE STARTING ANY EXCAVATION, THE CONTRACTOR SHALL CALL "J.U.L.I.E." AT (800) 892-0123 OR 811 FOR FIELD LOCATIONS OF BURIED ELECTRIC, TELEPHONE AND GAS UTILITIES. 48 HOUR NOTIFICATION IS REQUIRED.
2. THE CONTRACTOR SHALL COORDINATE CONSTRUCTION ACTIVITIES WITH UTILITY COMPANIES, AND THE VILLAGE OF SHOREWOOD.
3. THE CONTRACTOR WILL NOT BE ALLOWED TO SET UP A YARD OR FIELD OFFICE ON STATE PROPERTY WITHOUT WRITTEN PERMISSION FROM THE DEPARTMENT.
4. ALL DAMAGE TO EXISTING PAVEMENT MARKINGS OR RAISED REFLECTIVE PAVEMENT MARKERS OUTSIDE THE REMOVAL LINE SHOWN ON THE PLANS SHALL BE REPLACED AT NO ADDITIONAL COST TO THE DEPARTMENT.
5. BEFORE BEGINNING ANY WORK, THE CONTRACTOR SHALL RETAIN AND RECORD FOR FUTURE REFERENCE, ALL EXISTING PAVEMENT MARKING LINES AND RAISED REFLECTIVE PAVEMENT MARKERS IN ORDER THAT THESE LOCATIONS CAN BE RE-ESTABLISHED FOR STRIPING. EXACT LOCATIONS OF ALL PAVEMENT MARKINGS SHALL BE AS DIRECTED BY THE ENGINEER.
6. IT SHALL BE THE CONTRACTOR'S RESPONSIBILITY TO VERIFY ALL DIMENSIONS AND CONDITIONS EXISTING IN THE FIELD PRIOR TO CONSTRUCTION AND ORDERING OF MATERIALS.
7. THE CONTRACTOR SHALL CONTACT THE DISTRICT ONE TRAFFIC CONTROL SUPERVISOR AT (847)705-4470 A MINIMUM OF 72 HOURS IN ADVANCE OF BEGINNING WORK.
8. THE ENGINEER SHALL CONTACT ERIC CAMPOS AREA TRAFFIC FIELD ENGINEER, AT (815) 485-6475 A MINIMUM OF TWO (2) WEEKS PRIOR TO THE PLACEMENT OF PERMANENT PAVEMENT MARKINGS.
9. THESE PLANS HAVE BEEN PREPARED FROM NOTES RECEIVED FROM THE BUREAU OF MAINTENANCE BRIDGE INSPECTORS.
10. THE CONTRACTOR SHALL BE REQUIRED TO PROVIDE ACCESS TO ABUTTING PROPERTY AT ALL TIMES DURING THE CONSTRUCTION OF THIS PROJECT.
11. DO NOT SCALE PLANS FOR CONSTRUCTION DIMENSIONS

FILE NAME :	USER NAME :	DESIGNED :	REVISED :	STATE OF ILLINOIS DEPARTMENT OF TRANSPORTATION	US52 (JEFFERSON ST) OVER DUPAGE RIVER (SN 099-0276) INDEX OF SHEETS, STATE STANDARDS, AND GENERAL NOTES	F.A.P. RTE.	SECTION	COUNTY	TOTAL SHEETS	SHEET NO.	
c:\pwork\pwork\pwork\dahhan\0424261\011945\shg-gennote.dgn		DRAWN :	REVISED :			607	128B-BR(14)	WILL	14	2	
PLOT SCALE :	CHECKED :	DATE :	REVISED :			CONTRACT NO. 62A44		ILLINOIS FED. AID PROJECT			
Default						SCALE:	SHEET OF SHEETS	STA. TO STA.			

SUMMARY OF QUANTITIES			LIRBAN 100% STATE TOTAL QUANTITIES		CONSTRUCTION TYPE CODE				
CODE NO	ITEM	UNIT		0014					
31101100	SUBBASE GRANULAR MATERIAL, TYPE B	CU YD	1	1					
42400200	PORTLAND CEMENT CONCRETE SIDEWALK 5 INCH	SO FT	54	54					
44000600	SIDEWALK REMOVAL	SO FT	54	54					
60300105	FRAMES AND GRATES TO BE ADJUSTED	EACH	1	1					
67100100	MOBILIZATION	L SUM	1	1					
70301000	WORK ZONE PAVEMENT MARKING REMOVAL	SO FT	2227	2227					
* 78000200	THERMOPLASTIC PAVEMENT MARKING - LINE 4"	FOOT	200	200					
* 78008210	POLYUREA PAVEMENT MARKING TYPE I - LINE 4"	FOOT	2960	2960					
* 78100300	REPLACEMENT REFLECTOR	EACH	28	28					
78300100	PAVEMENT MARKING REMOVAL	SO FT	997	997					
X7010216	TRAFFIC CONTROL AND PROTECTION, (SPECIAL)	L SUM	1	1					
X7030030	WET REFLECTIVE TEMPORARY TAPE TYPE III, 4 INCH	FOOT	6680	6680					
Z0001700	APPROACH SLAB REPAIR (FULL DEPTH)	SO YD	12.6	12.6					

SUMMARY OF QUANTITIES			LIRBAN 100% STATE TOTAL QUANTITIES		CONSTRUCTION TYPE CODE				
CODE NO	ITEM	UNIT		0014					
Z0001800	APPROACH SLAB REPAIR (PARTIAL DEPTH)	SO YD	12.6	12.6					
Z0004562	COMBINATION CONCRETE CURB AND GUTTER REMOVAL AND REPLACEMENT	FOOT	6	6					
Z0016200	DECK SLAB REPAIR (PARTIAL)	SO YD	4	4					
Z0021400	EXPANSION JOINT (SPECIAL)	FOOT	306	306					
Z0030850	TEMPORARY INFORMATION SIGNING	SO FT	51.4	51.4					
Z0041895	POLYMER CONCRETE	CU FT	34	34					
Z0073510	TEMPORARY TRAFFIC SIGNAL TIMING	EACH	1	1					

* Specialty Items

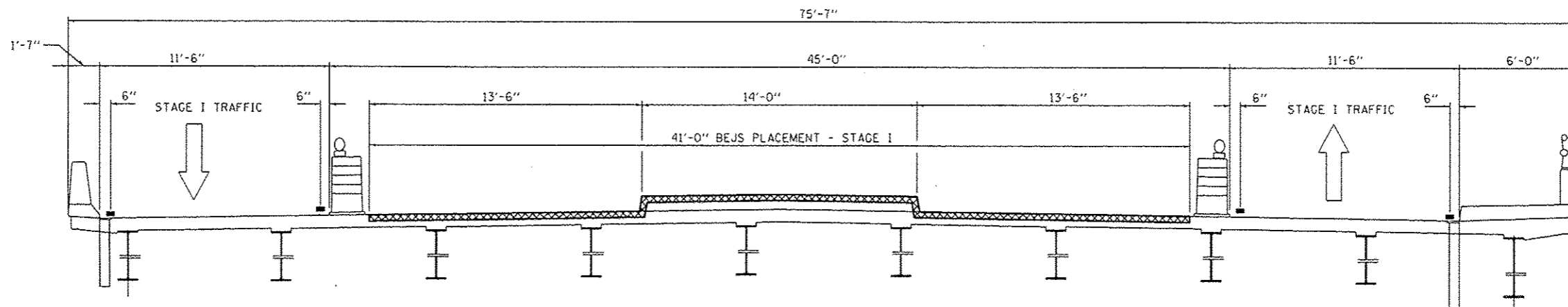
FILE NAME :	USER NAME :	DESIGNED -	REVISED -
		DRAWN -	REVISED -
		CHECKED -	REVISED -
		DATE -	REVISED -

STATE OF ILLINOIS
DEPARTMENT OF TRANSPORTATION

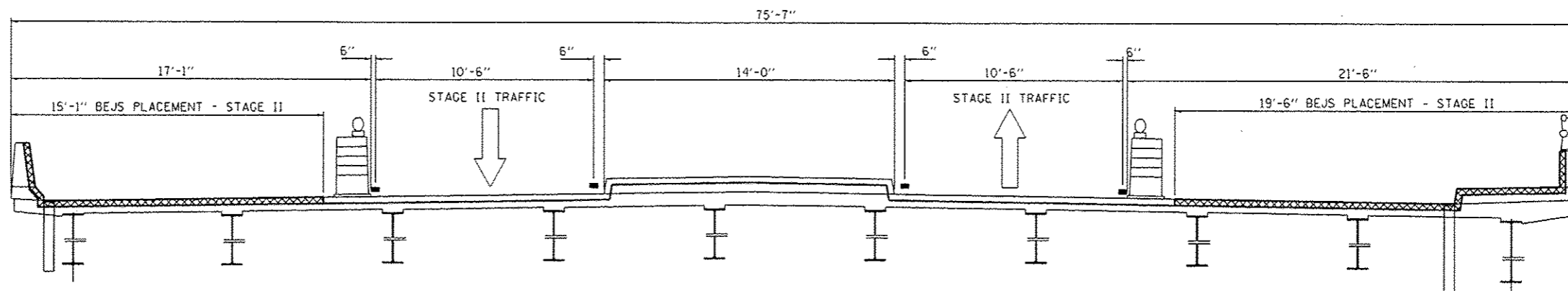
US 52 (JEFFERSON ST) OVER DUPAGE RIVER (SN 099-0276)
SUMMARY OF QUANTITIES

F.A.P. RTE. 607	SECTION 1288-BR(14)	COUNTY WILL	TOTAL SHEETS 14	SHEET NO. 3
CONTRACT NO. 62A44			FED. ROAD DIST. NO. 1 ILLINOIS FED. AID PROJECT	

SCALE: SHEET NO. 1 OF 1 SHEETS STA. TO STA.



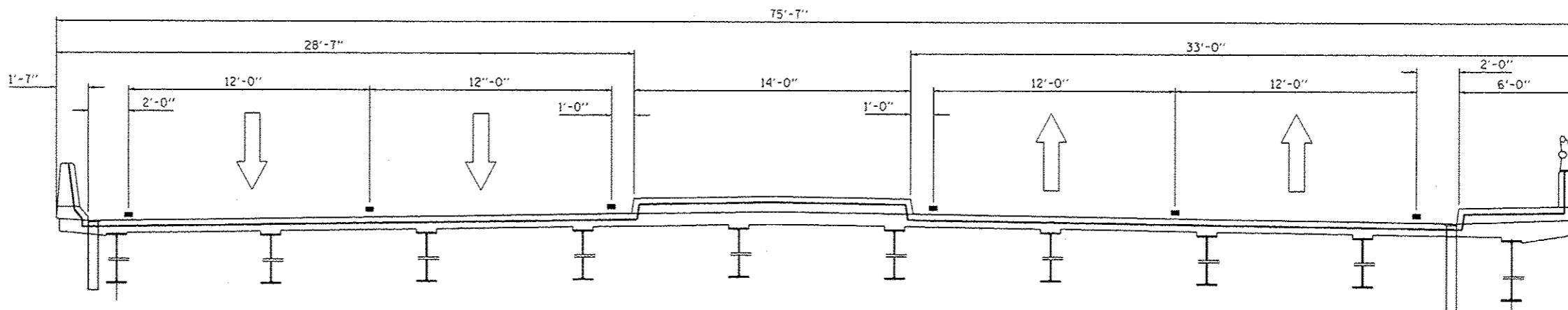
CROSS SECTION STAGE I



CROSS SECTION STAGE II

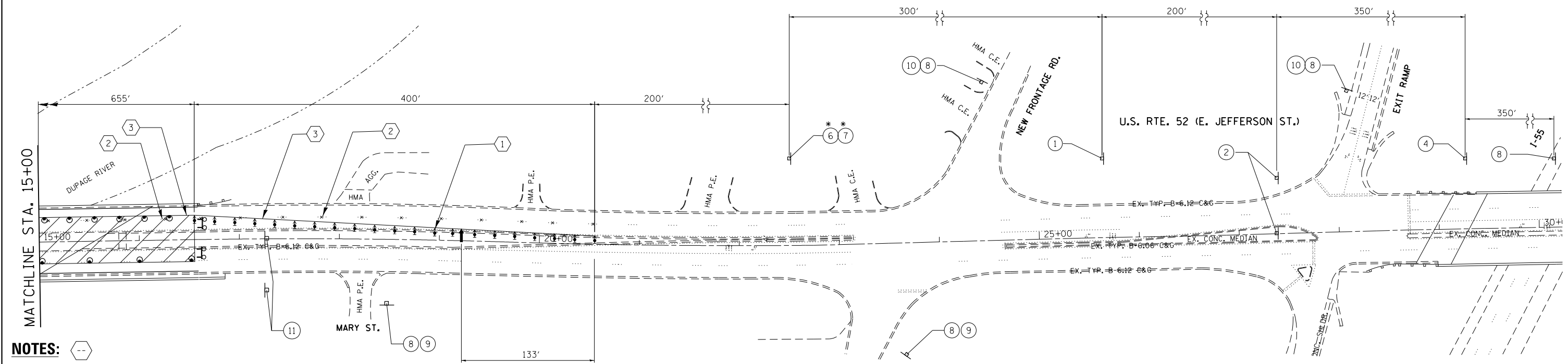
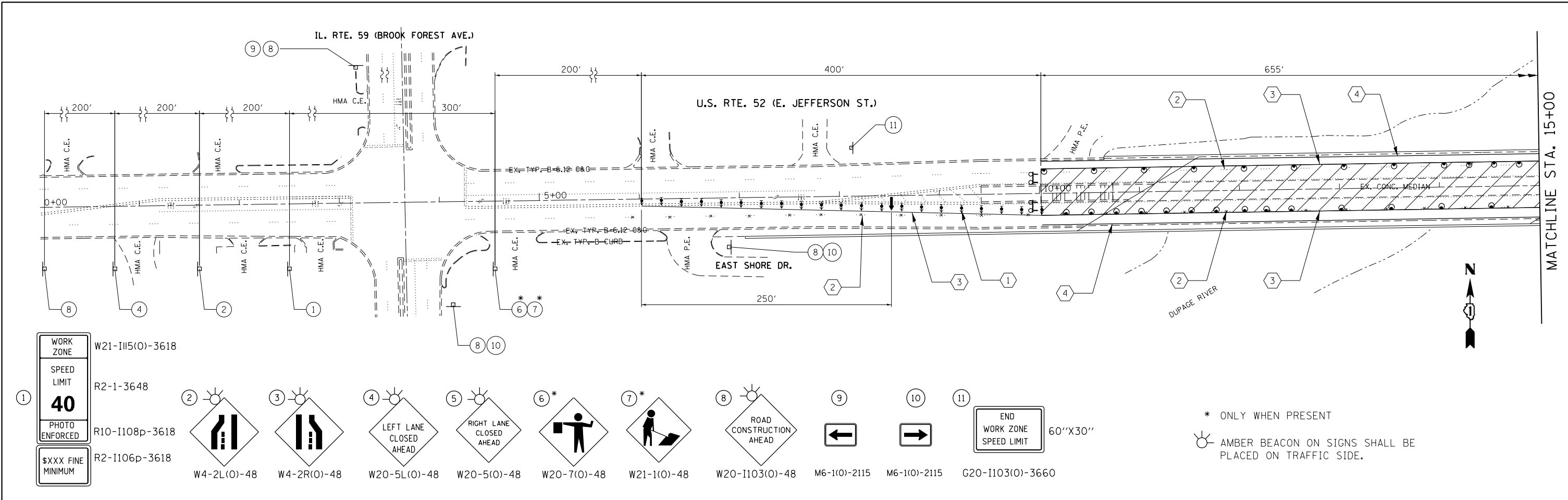
LEGEND

 **REMOVAL**



CROSS SECTION FINAL

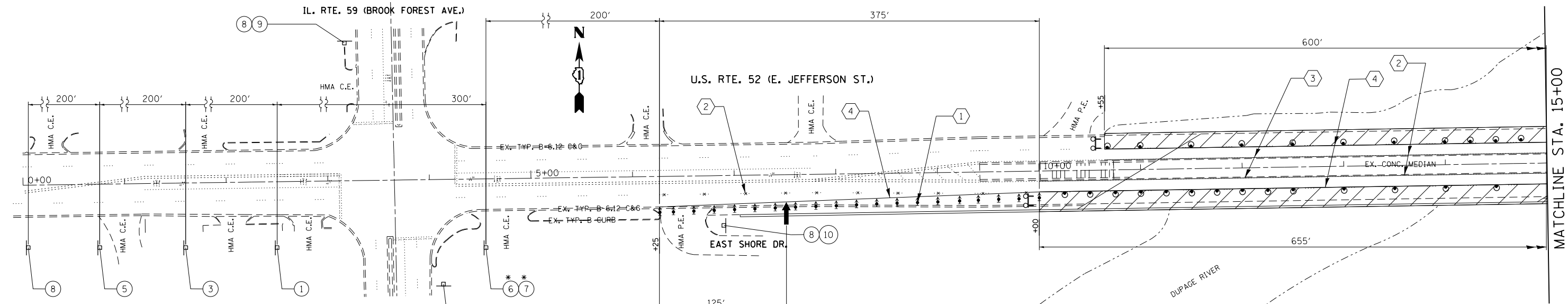
FILE NAME *	USER NAME = daherr	DESIGNED -	REVISED -	STATE OF ILLINOIS DEPARTMENT OF TRANSPORTATION	U.S. ROUTE 52 (JEFFERSON ST) OVER DUPAGE RIVER (SN 099-0276) TRAFFIC STAGING	F.A.P. RTE.	SECTION	COUNTY	TOTAL SHEETS	SHEET NO.	
c:\pe-work\p\dot\daherr\0424261\0119-05-shl-plandgn	PLOT SCALE = 100.0000' / in.	DRAWN -	REVISED -			50T	128B-BR(14)	WILL	14	4	
Default	PLOT DATE = 4/6/2015	CHECKED -	REVISED -			SCALE: 1"=50'		SHEET 1 OF 3 SHEETS		STA. 0+00 TO STA. 30+00	
		DATE -	REVISED -			ILLINOIS FED. AID PROJECT		CONTRACT NO. 62A44			



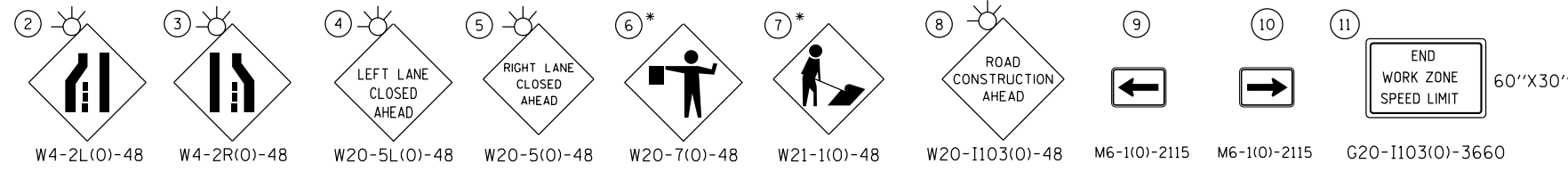
LEGEND

- Work area
- Direction indicator barricade with steady burn monodirectional light at 20' C-C
- Sign
- Type III barricade with flashing lights
- Arrow board
- Drum with steady burn monodirectional light

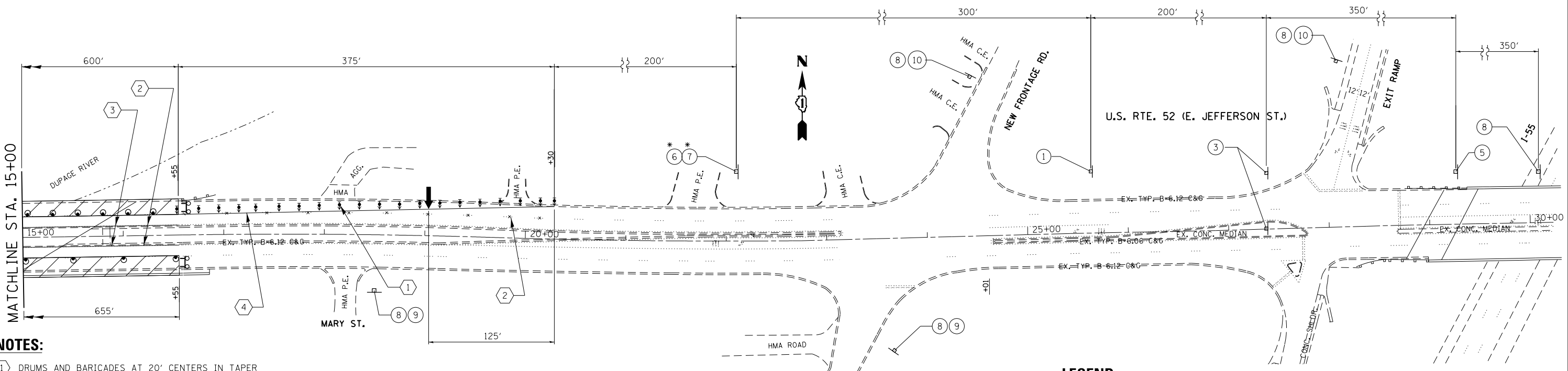
FILE NAME = c:\pw\work\p1dot\dahhnr\d0424261\011905-sh1-p1en.dgn	USER NAME = dahhnr	DESIGNED -	REVISED -	STATE OF ILLINOIS DEPARTMENT OF TRANSPORTATION	U.S. ROUTE 52 (JEFFERSON ST) OVER DUPAGE RIVER (SN 099-0276) TRAFFIC CONTROL PLAN STAGE I	F.A.P. RTE. 607	SECTION 128B-BR(14)	COUNTY WILL	TOTAL SHEETS 14	SHEET NO. 5	
Default	PLOT SCALE = 100.0000' / in.	CHECKED -	REVISED -			CONTRACT NO. 62A44					
	PLOT DATE = 4/1/2015	DATE -	REVISED -			ILLINOIS FED. AID PROJECT					
						SCALE: 1"=50'	SHEET 2 OF 3 SHEETS	STA. 0+00	TO STA. 30+00		



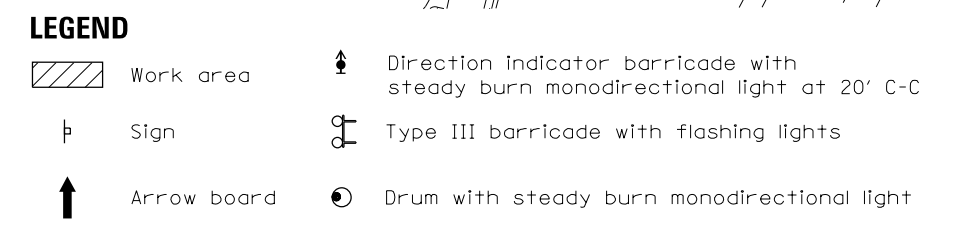
WORK ZONE	W21-1115(O)-3618
SPEED LIMIT	R2-1-3648
PHOTO ENFORCED	R10-1108p-3618
\$XXX FINE MINIMUM	R2-1106p-3618



* ONLY WHEN PRESENT
 AMBER BEACON ON SIGNS SHALL BE PLACED ON TRAFFIC SIDE.



- NOTES:**
- 1 DRUMS AND BARRICADES AT 20' CENTERS IN TAPER
 - 2 PAVEMENT MARKING REMOVAL
 - 3 WET REFLECTIVE TEMPORARY TAPE, TYPE III - 4" YELLOW
 - 4 WET REFLECTIVE TEMPORARY TAPE, TYPE III - 4" WHITE
 - 5 ALL EXISTING PAVEMENT MARKINGS WHICH CONFLICT WITH THE CURRENT STAGING SHALL BE REMOVED.



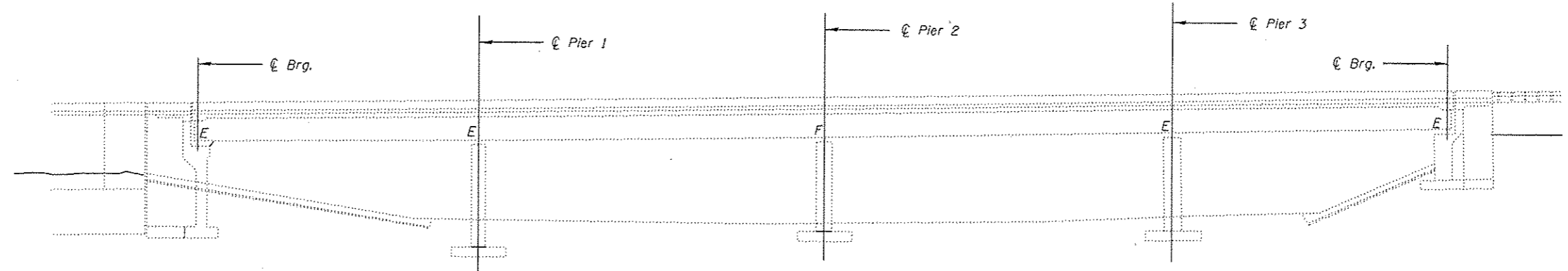
FILE NAME =	USER NAME = dahhnr	DESIGNED -	REVISED -
ei:\pw_work\p1dot\dahhnr\d0424261\0119405-sh1-p1en.dgn		DRAWN -	REVISED -
Default	PLOT SCALE = 100.0000' / in.	CHECKED -	REVISED -
	PLOT DATE = 4/1/2015	DATE -	REVISED -

**STATE OF ILLINOIS
 DEPARTMENT OF TRANSPORTATION**

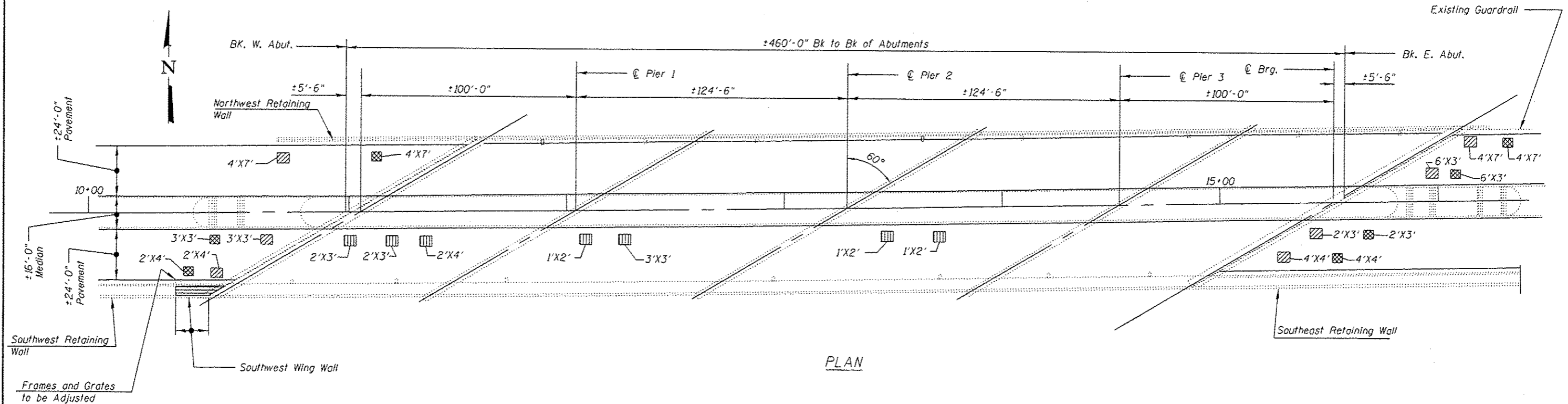
**U.S. ROUTE 52 (JEFFERSON ST) OVER DUPAGE RIVER (SN 099-0276)
 TRAFFIC CONTROL PLAN STAGE II**

F.A.P. RTE.	SECTION	COUNTY	TOTAL SHEETS	SHEET NO.
607	128B-BR(14)	WILL	14	6
CONTRACT NO. 62A44				
ILLINOIS FED. AID PROJECT				

SCALE: 1"=50' SHEET 3 OF 3 SHEETS STA. 0+00 TO STA. 30+00



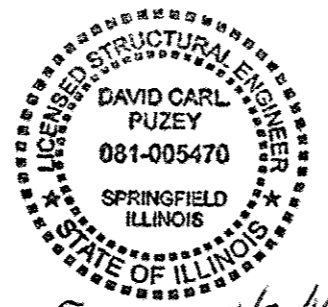
ELEVATION



PLAN

LEGEND

- Approach Slab Repair (Full Depth)
- Approach Slab Repair (Partial Depth)
- Deck Slab Repair (Partial)
- Sidewalk Removal and PCC Sidewalk 5 inch



Expires 11/30/16

TOTAL BILL OF MATERIAL

ITEM	UNIT	TOTAL
Approach Slab Repair (Full Depth)	SO YD	12.6
Approach Slab Repair (Partial Depth)	SO YD	12.6
Deck Slab Repair (Partial)	SO YD	4
Expansion Joint (Special)	Foot	306
Polymer Concrete	CU. FT.	34

DESIGNED - JAM
 CHECKED - CCC
 DRAWN -
 CHECKED -

EXAMINED
 PASSED
 ENGINEER OF STRUCTURAL SERVICES
 ENGINEER OF BRIDGES AND STRUCTURES

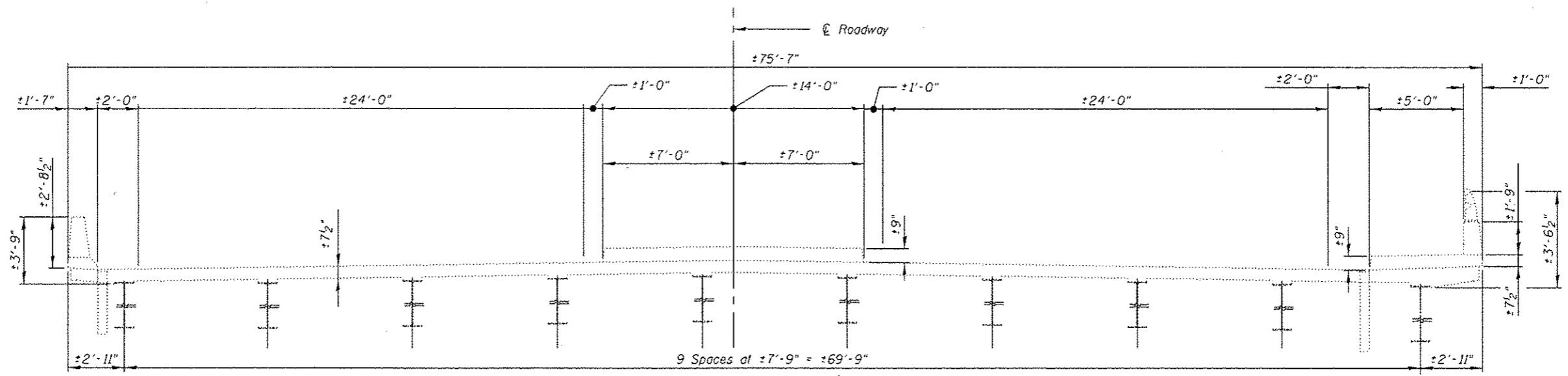
DATE - 4/27/15
 REVISED
 REVISED

STATE OF ILLINOIS
 DEPARTMENT OF TRANSPORTATION

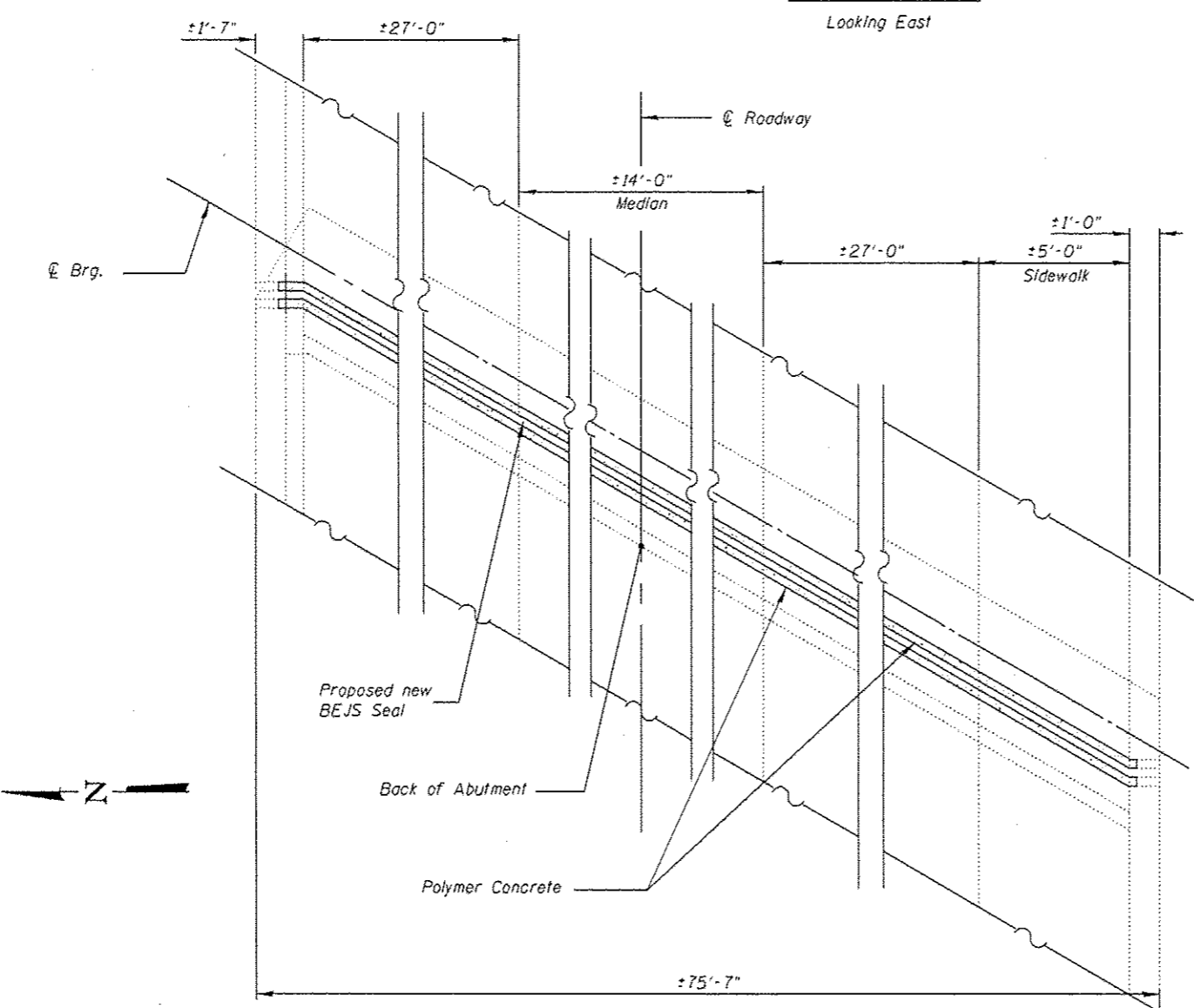
US 52 (JEFFERSON ST) OVER DUPAGE RIVER (SN 099-0276)
 GENERAL PLAN AND ELEVATION

SHEET NO. 1 OF 3 SHEETS

F.A.P. RTE.	SECTION	COUNTY	TOTAL SHEETS	SHEET NO.
607	1288-BR(14)	WILL	14	7
CONTRACT NO. 62A44			ILLINOIS FED. AID PROJECT	



CROSS SECTION
Looking East



WEST ABUTMENT PLAN
East abutment Similar

GENERAL NOTES:

Plan dimensions and details relative to existing plans are subject to nominal construction variations. The Contractor shall field verify existing dimensions and details affecting new construction and make necessary approved adjustments prior to construction or ordering of materials. Such variations shall not be cause for additional compensation for a change in scope of the work, however, the Contractor will be paid for the quantity actually furnished based at the unit price bid for the work.

Areas of deck repairs shown are estimated. The Engineer shall show actual locations of deck repairs on As-built Plans.

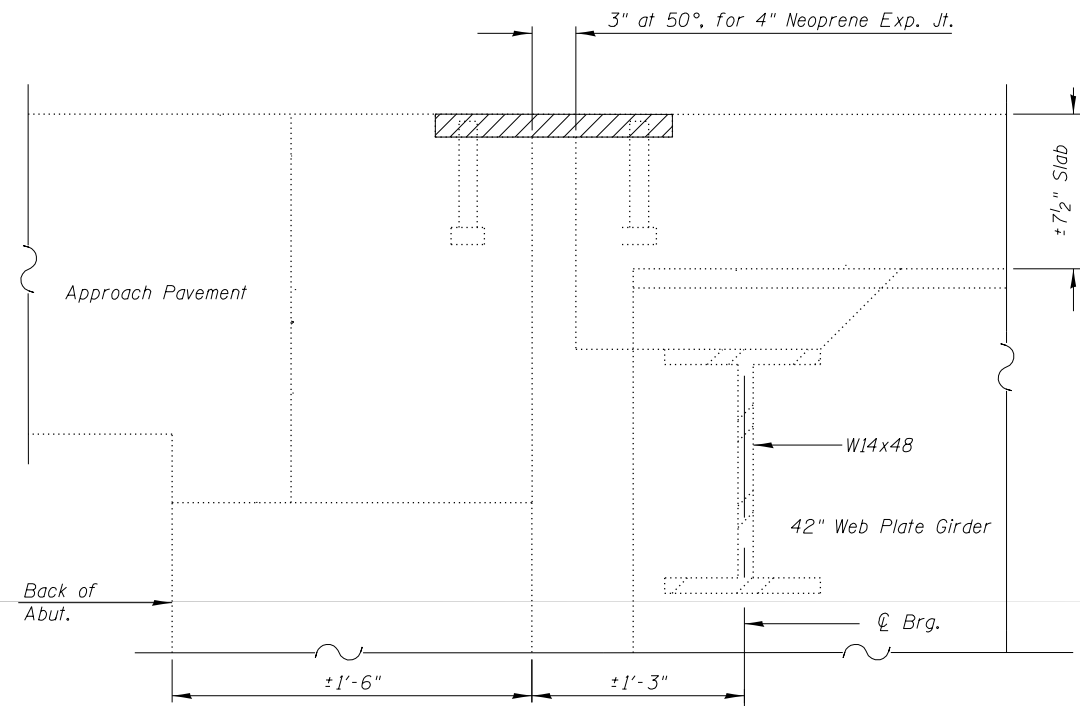
Joint openings shall be adjusted according to Article 520.04 of the Std. Specs. when the deck is poured at an ambient temperature other than 50° F.

The removal of the existing joint is included in the cost of the Polymer Concrete.

All loose foreign material shall be removed.

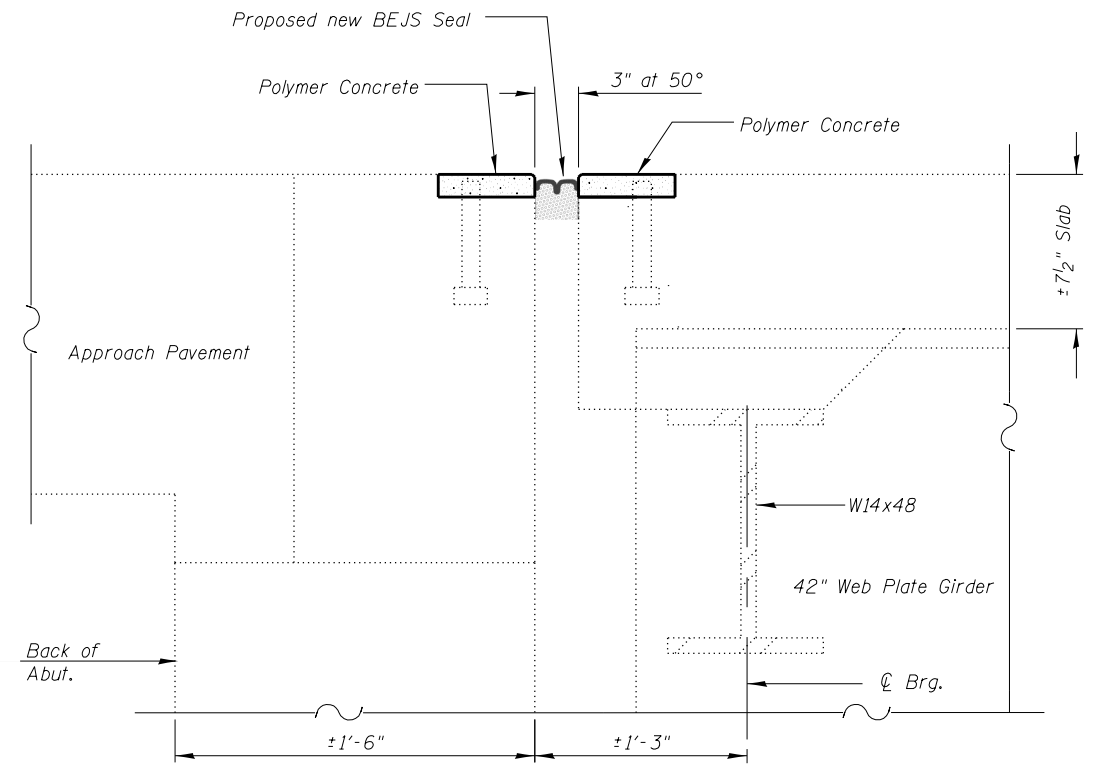
Detach existing guardrail terminal and reinstall to complete the necessary work as detailed on the plans and as specified in the special provisions. Cost shall be included with Expansion Joint (Special)

DESIGNED -	EXAMINED	DATE -	STATE OF ILLINOIS DEPARTMENT OF TRANSPORTATION	US 52 (JEFFERSON ST) OVER DUPAGE RIVER (SN 099-0276) CROSS SECTION AND JOINT PLAN	F.A.P. RTE.	SECTION	COUNTY	TOTAL SHEETS	SHEET NO.	
CHECKED -	ENGINEER OF STRUCTURAL SERVICES	REVISED			607	1288-BR(14)	WILL	14	8	
DRAWN -	PASSED	REVISED			CONTRACT NO. 62A44					
CHECKED -	ENGINEER OF BRIDGES AND STRUCTURES	REVISED			SHEET NO. 2 OF 3 SHEETS					



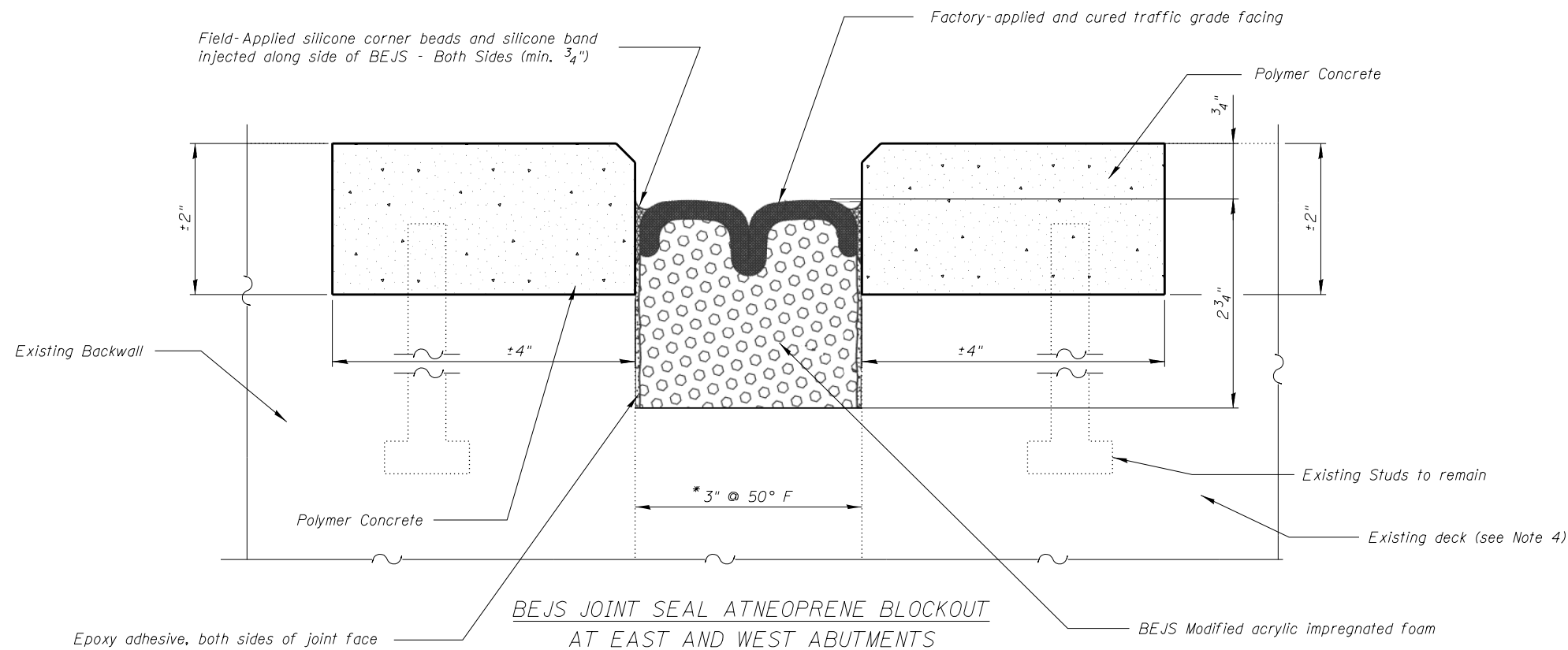
SECTION A-A
EXISTING NEOPRENE EXPANSION JOINT, 4"

Dimensions are at right angles to abutment UNO



SECTION A-A
PROPOSED BEJS SEAL AT EAST AND WEST ABUTMENTS

Dimensions are at right angles to abutment UNO



BEJS JOINT SEAL AT NEOPRENE BLOCKOUT
AT EAST AND WEST ABUTMENTS

*Measured normal to joint

Notes:

1. Provide an expansion joint seal system as shown
2. Install expansion joint sealing system in accordance with the manufacturer's recommendations.
3. Verify dimensions before fabrication of expansion joint seal
4. Repair areas of spalled or deteriorated concrete adjacent to expansion joints.
5. Stage installation of expansion joint seals in accordance with traffic control plans

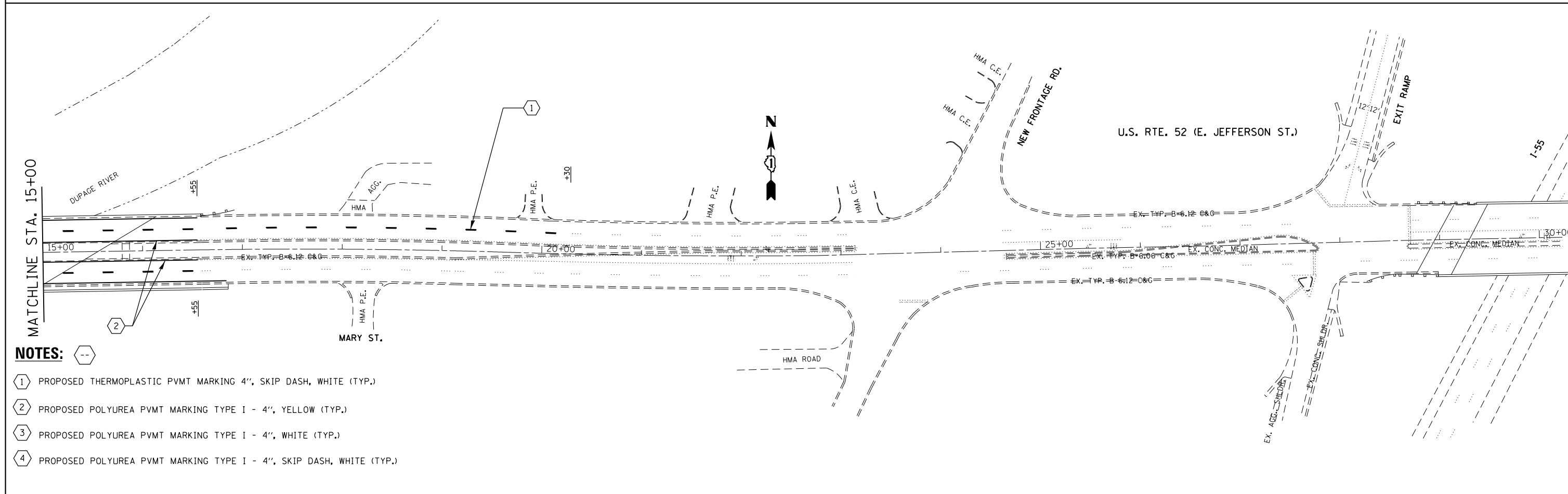
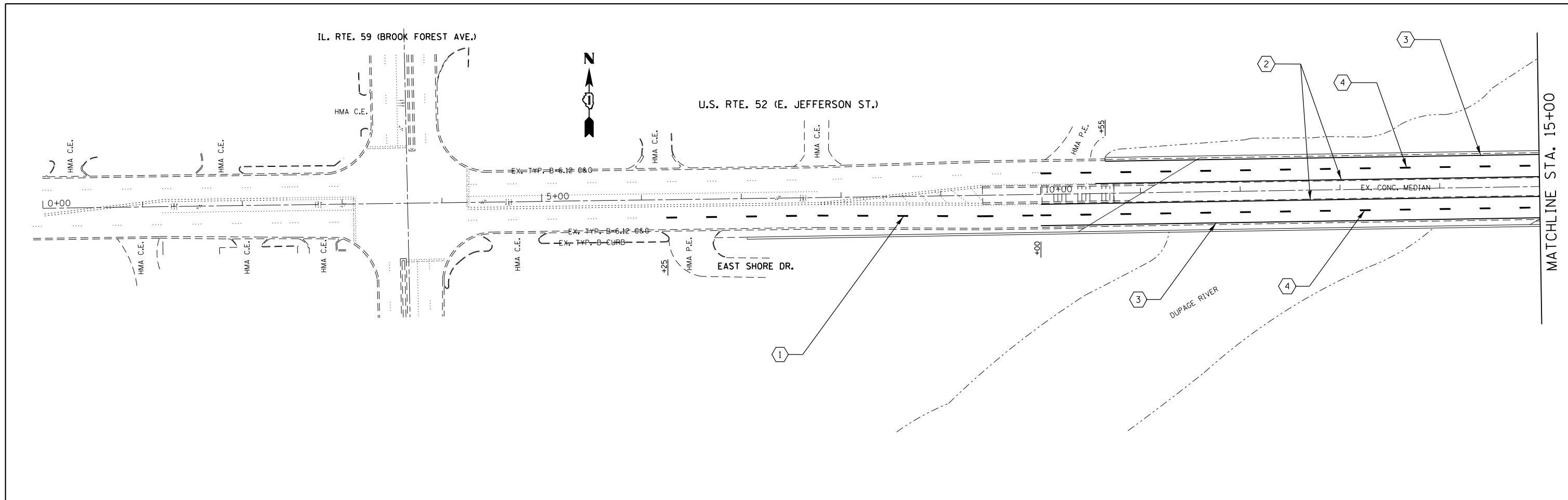
DESIGNED -	EXAMINED	DATE -
CHECKED -	ENGINEER OF STRUCTURAL SERVICES	
DRAWN -	PASSED	REVISED
CHECKED -	ENGINEER OF BRIDGES AND STRUCTURES	REVISED

STATE OF ILLINOIS
DEPARTMENT OF TRANSPORTATION

US 52 (JEFFERSON ST) OVER DUPAGE RIVER (SN 099-0276)
DETAILS

F.A.P. RTE.	SECTION	COUNTY	TOTAL SHEETS	SHEET NO.
607	128B-BR(14)	WILL	14	9
CONTRACT NO. 62A44				
ILLINOIS FED. AID PROJECT				

SHEET NO. 3 OF 3 SHEETS



NOTES:

- ① PROPOSED THERMOPLASTIC PVMT MARKING 4", SKIP DASH, WHITE (TYP.)
- ② PROPOSED POLYUREA PVMT MARKING TYPE I - 4", YELLOW (TYP.)
- ③ PROPOSED POLYUREA PVMT MARKING TYPE I - 4", WHITE (TYP.)
- ④ PROPOSED POLYUREA PVMT MARKING TYPE I - 4", SKIP DASH, WHITE (TYP.)

FILE NAME =	USER NAME = dahhnr	DESIGNED -	REVISED -
ei:\pwork\pwork\dot\dahhnr\d0424261\0119405-sh1-plen.dgn		DRAWN -	REVISED -
Default	PLOT SCALE = 100.0000' / in.	CHECKED -	REVISED -
	PLOT DATE = 4/1/2015	DATE -	REVISED -

**STATE OF ILLINOIS
DEPARTMENT OF TRANSPORTATION**

**U.S. ROUTE 52 (JEFFERSON ST) OVER DUPAGE RIVER (SN 099-0276)
PAVEMENT MARKING DETAILS**

SCALE: 1"=50' SHEET 1 OF 1 SHEETS STA. 0+00 TO STA. 30+00

F.A.P. RTE.	SECTION	COUNTY	TOTAL SHEETS	SHEET NO.
607	128B-BR(14)	WILL	14	10
CONTRACT NO. 62A44				

ILLINOIS FED. AID PROJECT

VARIABLE - TO MEET EXISTING DIMENSIONS AND FIELD CONDITIONS (SEE NOTE ②)

PROP. CONC. CURB OR CURB AND GUTTER REPLACEMENT IN ACCORDANCE WITH STATE STANDARD 606001. (SEE NOTE ②)

SAW CUT FULL DEPTH - INCLUDED IN THE COST OF SIDEWALK, DRIVEWAY OR MEDIAN SURFACE REMOVAL PAY ITEM.

SEE STATE STANDARD 606001
EXISTING OR PROPOSED HMA SURFACE (IF APPLICABLE)

18" (450) MAX.

1/4" (5) **

EXISTING SIDEWALK, DRIVEWAY, MEDIAN SURFACE, SOD OR GROUND.

PROPOSED SIDEWALK, DRIVEWAY PAVEMENT, MEDIAN SURFACE OR SODDING SALT TOLERANT WITH TOP SOIL, 4" (100) SOD RESTORATION (SEE NOTE ①).

EXISTING CONCRETE PAVEMENT, CONCRETE BASE COURSE OR FLEXIBLE PAVEMENT

3" (75) MIN.

SUITABLE BACKFILL MATERIAL (INCLUDED IN THE COST OF CURB OR CURB AND GUTTER REMOVAL AND REPLACEMENT)

PROPOSED 3/4" (20) PREFORMED EXPANSION JOINT AT CONCRETE SIDEWALKS, DRIVEWAYS, AND MEDIANS. (INCLUDED IN THE COST OF CURB OR CURB AND GUTTER REMOVAL AND REPLACEMENT.)

* 3" (75) MINIMUM FROM TOP AND BOTTOM OF THE CONCRETE PAVEMENT OR BASE COURSE.

** IF THE FINAL SURFACE OF THE PAVEMENT IS CONCRETE, THE GUTTER IS TO BE FLUSH WITH THE PAVEMENT.

NOTE: ① SIDEWALK, DRIVEWAY PAVEMENT OR MEDIAN SURFACE SHALL BE SIMILAR TO THE MATERIAL BEING REMOVED AND WILL BE PAID FOR SEPARATELY.

SODDING, SALT TOLERANT AND TOP SOIL, FURNISH AND PLACE 4" WILL BE PAID FOR SEPARATELY.

② FERTILIZER FOR THE PLACEMENT OF THE SOD IS NOT REQUIRED

③ CURB OR CURB AND GUTTER REPLACEMENT SHALL MATCH THE SHAPE OF THE EXISTING CURB OR CURB AND GUTTER UNLESS OTHERWISE SPECIFIED.

④ FOR CURB OR CURB AND GUTTER REMOVAL AND REPLACEMENT ADJACENT TO FLEXIBLE PAVEMENT DELETE EPOXY COATED TIE BARS.

⑤ LONGITUDINAL BARS, IF ENCOUNTERED IN THE EXISTING CURB OR CURB AND GUTTER, ARE NOT TO BE REPLACED. CUTTING AND REMOVING LONGITUDINAL BARS SHALL BE INCLUDED IN THE COST OF CURB OR CURB AND GUTTER REMOVAL AND REPLACEMENT.

⑥ THE COST OF HMA SURFACE REMOVAL IN THE EXISTING GUTTER FLAG SHALL BE INCLUDED IN THE COST OF THE CURB AND GUTTER REMOVAL AND REPLACEMENT.

⑦ THE REMOVAL AND REPLACEMENT OF THE EXISTING CURB OR CURB AND GUTTER SHALL BE DONE IN ACCORDANCE WITH THE APPLICABLE PORTIONS OF SECTION 440 AND 606 OF THE STANDARD SPECIFICATIONS.

⑧ THE LOCATIONS OF REMOVAL AND REPLACEMENT OF EXISTING CURB OR CURB AND GUTTER SHALL BE DETERMINED BY THE RESIDENT ENGINEER AT THE TIME OF CONSTRUCTION.

UNSUITABLE SUB-BASE MATERIAL TO BE REMOVED, IF DIRECTED BY THE ENGINEER, SHALL BE REPLACED WITH EITHER SUB-BASE GRANULAR MATERIAL, TYPE B OR ADDITIONAL THICKNESS OF CONCRETE.

REMOVAL AND REPLACEMENT 4" (100) OR LESS IS INCLUDED IN THE COST OF CURB OR CURB AND GUTTER REMOVAL AND REPLACEMENT.

REMOVAL AND REPLACEMENT IN EXCESS OF 4" (100) WILL BE PAID FOR IN ACCORDANCE WITH ARTICLE 109.04 OF THE STANDARD SPECIFICATIONS.

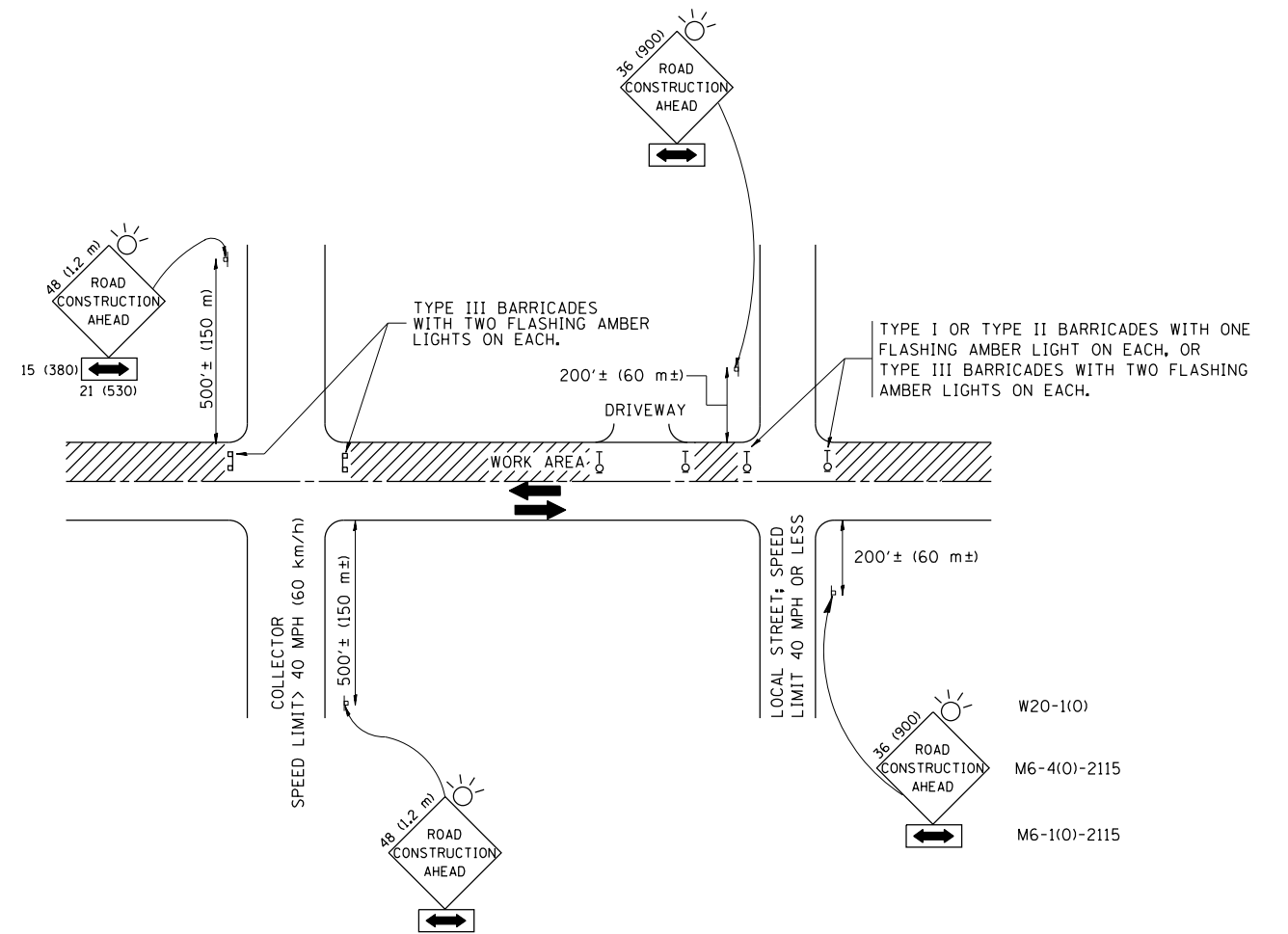
PROPOSED #6 (20) EPOXY COATED TIE BARS 24" (600) LONG AT 24" (600) CENTERS WILL NOT BE PAID FOR SEPARATELY. DELETE EPOXY COATED TIE BARS IF EXISTING TIE BARS ARE USUABLE AS DETERMINED BY THE ENGINEER. (SEE NOTE ③).

BASIS OF PAYMENT:
THIS WORK WILL BE PAID FOR AT THE CONTRACT UNIT PRICE PER FOOT (METER) FOR "CURB REMOVAL AND REPLACEMENT" OR "COMBINATION CONCRETE CURB AND GUTTER REMOVAL AND REPLACEMENT".

CURB OR CURB AND GUTTER REMOVAL AND REPLACEMENT

ALL DIMENSIONS ARE IN INCHES (MILLIMETERS) UNLESS OTHERWISE SHOWN.

FILE NAME =	USER NAME = dahhnr	DESIGNED - A. HOUSEH	REVISED - R. SHAH 10-03-96	STATE OF ILLINOIS DEPARTMENT OF TRANSPORTATION	CURB OR CURB AND GUTTER REMOVAL AND REPLACEMENT			F.A.P. RTE.	SECTION	COUNTY	TOTAL SHEETS	SHEET NO.
et:\pw\work\p\dot\dahhnr\d0424261\Dist	DRAWN -	REVISED - A. ABBAS 03-21-97	607					128B-BR(14)	WILL	14	11	
PLOT SCALE = 100.0000' / in.	CHECKED -	REVISED - M. GOMEZ 01-22-01	BD600-06 (BD-24)					CONTRACT NO. 62A44				
PLOT DATE = 4/1/2015	DATE - 03-11-94	REVISED - R. BORO 12-15-09	SCALE: NONE					SHEET NO. 1 OF 1 SHEETS	STA.	TO STA.	FED. ROAD DIST. NO. 1 ILLINOIS FED. AID PROJECT	



TRAFFIC CONTROL AND PROTECTION FOR SIDE ROADS, INTERSECTIONS, AND DRIVEWAYS

NOTES:

A. FOR NO LANE RESTRICTION ON THE SIDE ROAD OR DRIVEWAYS

1. SIDE ROAD WITH A SPEED LIMIT OF 40 MPH (60 km/h) OR LESS AS SHOWN ON THE DRAWING AND AS DIRECTED BY THE ENGINEER:

a) ONE ROAD CONSTRUCTION AHEAD SIGN 36 x 36 (900x900) WITH A FLASHER AND FLAG MOUNTED ON IT APPROXIMATELY 200' (60 m) IN ADVANCE OF THE MAIN ROUTE.

b) THE CLOSED PORTION OF THE MAIN ROUTE SHALL BE PROTECTED BY BLOCKING WITH TYPE I, TYPE II OR TYPE III BARRICADES, 1/3 OF THE CROSS SECTION OF THE CLOSED PORTION.

2. SIDE ROAD WITH A SPEED LIMIT GREATER THAN 40 MPH (60 km/h) AS SHOWN ON THE DRAWING AND AS DIRECTED BY THE ENGINEER:

a) ONE ROAD CONSTRUCTION AHEAD SIGN 48 x 48 (1.2 m x 1.2 m) WITH A FLASHER MOUNTED ON IT APPROXIMATELY 500' (150 m) IN ADVANCE OF THE MAIN ROUTE.

b) THE CLOSED PORTION OF THE MAIN ROUTE SHALL BE PROTECTED BY BLOCKING WITH TYPE III BARRICADES, 1/2 OF THE CROSS SECTION OF THE CLOSED PORTION.

3. WHEN THE SIDE ROAD LIES BETWEEN THE BEGINNING OF THE MAINLINE SIGNING AND THE WORK ZONE, A SINGLE HEADED ARROW (M6-1) SHALL BE USED IN LIEU OF THE DOUBLE HEADED ARROW (M6-4).

B. FOR A LANE CLOSURE ON A SIDE ROAD OR DRIVEWAY:

USE APPLICABLE PORTIONS OF THE TYPICAL APPLICATION OF TRAFFIC CONTROL DEVICES (STD. 701501, STD. 701606 OR THE APPROPRIATE STANDARD). THE SPACING OF SIGNS AND BARRICADES SHALL BE ADJUSTED FOR FIELD CONDITIONS AS DIRECTED BY THE ENGINEER. THE DIRECTIONAL ARROW SHALL BE COVERED OR REMOVED WHEN NO LONGER CONSISTENT WITH THE SIDE ROAD LANE CLOSURE.

C. ADVANCE WARNING SIGNS ARE TO BE OMITTED ON DRIVEWAY UNLESS OTHERWISE NOTED.

D. THE TRAFFIC CONTROL AND PROTECTION FOR SIDE ROADS, INTERSECTIONS, AND DRIVEWAYS SHALL BE INCIDENTAL TO THE COST OF SPECIFIED TRAFFIC CONTROL STANDARDS OR ITEMS.

All dimensions are in millimeters (inches) unless otherwise shown.

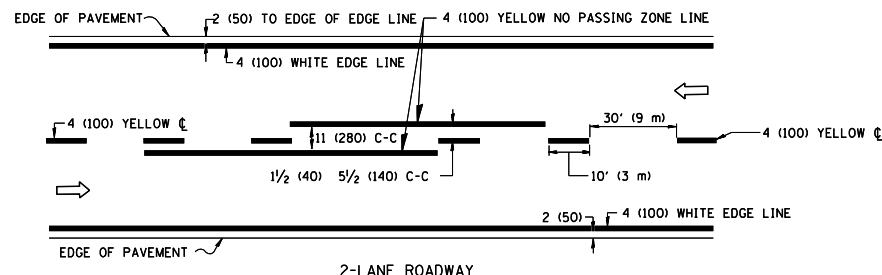
FILE NAME =	USER NAME = dahhnr	DESIGNED - LHA	REVISED - J. OBERLE 10-18-95
et:\pwork\pwork\dot\dahhnr\d0424261\Dist		DRAWN -	REVISED - A. HOUSEH 03-06-96
	PLOT SCALE = 100.0000' / in.	CHECKED -	REVISED - A. HOUSEH 10-15-96
	PLOT DATE = 4/1/2015	DATE - 06-89	REVISED - T. RAMMACH 01-06-00

STATE OF ILLINOIS
DEPARTMENT OF TRANSPORTATION

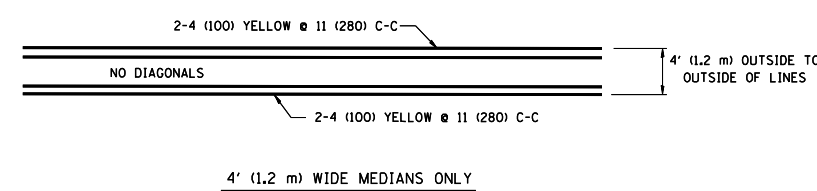
TRAFFIC CONTROL AND PROTECTION FOR
SIDE ROADS, INTERSECTIONS, AND DRIVEWAYS

SCALE: NONE SHEET NO. 1 OF 1 SHEETS STA. TO STA.

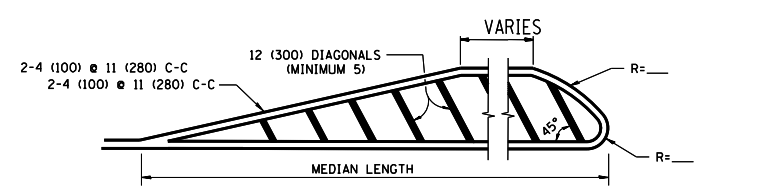
F.A.P. RTE.	SECTION	COUNTY	TOTAL SHEETS	SHEET NO.
607	128B-BR(14)	WILL	14	12
TC-10		CONTRACT NO. 62A44		
FED. ROAD DIST. NO. 1 ILLINOIS FED. AID PROJECT				



2-LANE ROADWAY

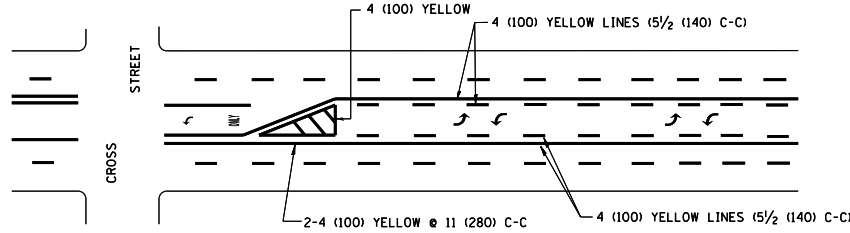


4' (1.2 m) WIDE MEDIANS ONLY

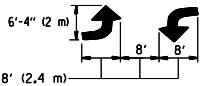


MEDIANS OVER 4' (1.2 m) WIDE

DIAGONAL LINE SPACING: 50' (15 m) C-C (LESS THAN 30MPH (50 km/h))
75' (25 m) C-C 30MPH (50 km/h) TO 45MPH (70 km/h)
150' (45 m) C-C (MORE THAN 45MPH (70 km/h))

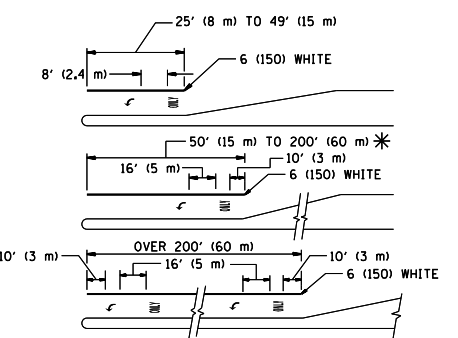


TYPICAL PAINTED MEDIAN MARKING



MEDIAN WITH TWO-WAY LEFT TURN LANE

TYPICAL PAINTED MEDIAN MARKING

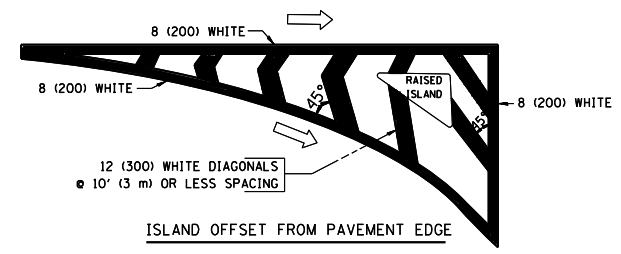


FULL SIZE LETTERS 8' (2.4 m) AND ARROWS SHALL BE USED.
AREA = 15.6 SQ. FT. (1.5 m²) ONLY AREA = 20.8 SQ. FT. (1.9 m²)

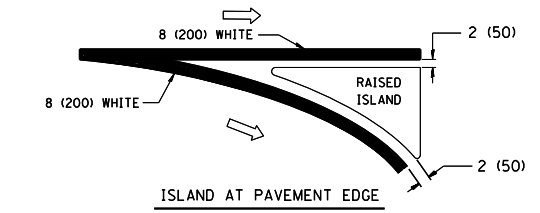
* TURN LANES IN EXCESS OF 400' (120 m) IN LENGTH MAY HAVE AN ADDITIONAL SET OF ARROW - "ONLY" INSTALLED MIDWAY BETWEEN THE OTHER TWO SETS OF ARROW - "ONLY".

TYPICAL LEFT (OR RIGHT) TURN LANE

TYPICAL TURN LANE MARKING



ISLAND OFFSET FROM PAVEMENT EDGE



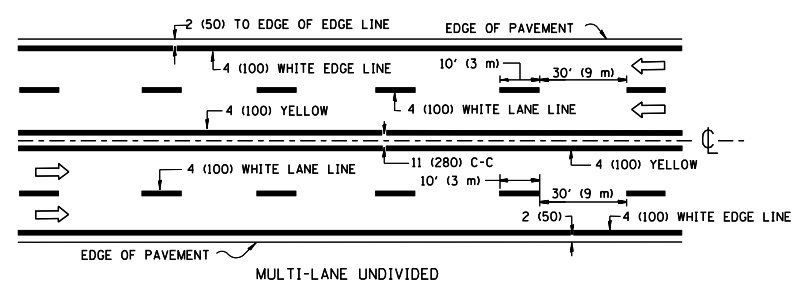
ISLAND AT PAVEMENT EDGE

TYPICAL ISLAND MARKING

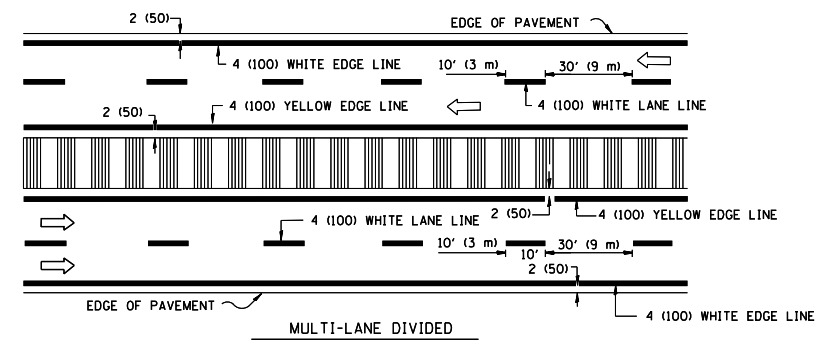
TYPE OF MARKING	WIDTH OF LINE	PATTERN	COLOR	SPACING / REMARKS
CENTERLINE ON 2 LANE PAVEMENT	4 (100)	SKIP-DASH	YELLOW	10' (3 m) LINE WITH 30' (9 m) SPACE
CENTERLINE ON MULTI-LANE UNDIVIDED PAVEMENT	2 @ 4 (100)	SOLID	YELLOW	11 (280) C-C
NO PASSING ZONE LINES: FOR ONE DIRECTION	4 (100)	SOLID	YELLOW	5/2 (140) C-C FROM SKIP-DASH CENTERLINE
NO PASSING ZONE LINES: FOR BOTH DIRECTIONS	2 @ 4 (100)	SOLID	YELLOW	11 (280) C-C OMIT SKIP-DASH CENTERLINE BETWEEN
LANE LINES	4 (100) 5 (125) ON FREEWAYS	SKIP-DASH SKIP-DASH	WHITE WHITE	10' (3 m) LINE WITH 30' (9 m) SPACE
DOTTED LINES (EXTENSIONS OF CENTER, LANE OR TURN LANE MARKINGS)	SAME AS LINE BEING EXTENDED	SKIP-DASH	SAME AS LINE BEING EXTENDED	2' (600) LINE WITH 6' (1.8 m) SPACE
EDGE LINES	4 (100)	SOLID	YELLOW-LEFT WHITE-RIGHT	OUTLINE MOUNTABLE MEDIANS IN YELLOW; EDGE LINES ARE NOT USED NEXT TO BARRIER CURB
TURN LANE MARKINGS	6 (150) LINE; FULL SIZE LETTERS & SYMBOLS (8' (2.4m))	SOLID	WHITE	SEE TYPICAL TURN LANE MARKING DETAIL
TWO WAY LEFT TURN MARKING	2 @ 4 (100) EACH DIRECTION 8' (2.4m) LEFT ARROW	SKIP-DASH AND SOLID IN PAIRS	YELLOW WHITE	10' (3 m) LINE WITH 30' (9 m) SPACE FOR SKIP-DASH; 5/2 (140) C-C BETWEEN SOLID LINE AND SKIP-DASH LINE. SEE TYPICAL TWO-WAY LEFT TURN MARKING DETAIL
CROSSWALK LINES (PEDESTRIAN) A. DIAGONALS (BIKE & EQUESTRIAN) B. LONGITUDINAL BARS (SCHOOL)	2 @ 6 (150) 12 (300) @ 45° 12 (300) @ 90°	SOLID SOLID SOLID	WHITE WHITE WHITE	NOT LESS THAN 6' (1.8 m) APART 2' (600) APART 2' (600) APART SEE TYPICAL CROSSWALK MARKING DETAILS.
STOP LINES	24 (600)	SOLID	WHITE	PLACE 4' (1.2 m) IN ADVANCE OF AND PARALLEL TO CROSSWALK, IF PRESENT. OTHERWISE, PLACE AT DESIRED STOPPING POINT, PARALLEL TO CROSSROAD CENTERLINE, WHERE POSSIBLE
PAINTED MEDIANS	2 @ 4 (100) WITH 12 (300) DIAGONALS @ 45° NO DIAGONALS USED FOR 4' (1.2 m) WIDE MEDIANS	SOLID	YELLOW; TWO WAY TRAFFIC WHITE; ONE WAY TRAFFIC	11 (280) C-C FOR THE DOUBLE LINE. SEE TYPICAL PAINTED MEDIAN MARKING.
GORE MARKING AND CHANNELIZING LINES	8 (200) WITH 12 (300) DIAGONALS @ 45°	SOLID	WHITE	DIAGONALS: 15' (4.5 m) C-C (LESS THAN 30MPH (50 km/h)) 20' (6 m) C-C 30MPH (50 km/h) TO 45MPH (70 km/h) 30' (9 m) C-C (OVER 45MPH (70 km/h))
RAILROAD CROSSING	24 (600) TRANSVERSE LINES; "RR" 15' (4.5 m) MIN. LETTERS; 16 (400) LINE FOR "X"	SOLID	WHITE	SEE STATE STANDARD 780001 AREA OF: "R"=3.6 SQ. FT. (0.33 m ²) EACH "X"=54.0 SQ. FT. (5.0 m ²) EACH
SHOULDER DIAGONALS	12 (300) @ 45°	SOLID	WHITE - RIGHT YELLOW - LEFT	50' (15 m) C-C (LESS THAN 30MPH (50 km/h)) 75' (25 m) C-C 30 MPH (50 km/h) TO 45MPH (70 km/h) 150' (45 m) C-C (OVER 45MPH (70 km/h))

FOR FURTHER DETAILS ON PAVEMENT MARKING REFER TO STANDARD SPECIFICATIONS FOR ROAD AND BRIDGE CONSTRUCTION AND STATE STANDARD 780001.

All dimensions are in inches (millimeters) unless otherwise shown.



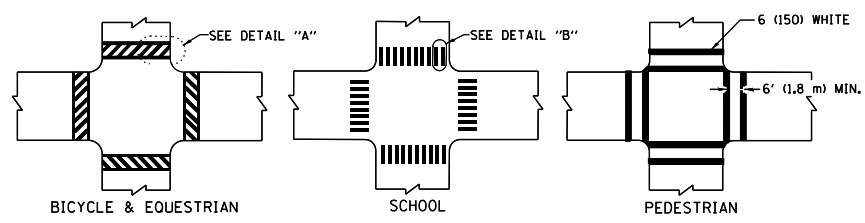
MULTI-LANE UNDIVIDED



MULTI-LANE DIVIDED WITH MOUNTABLE MEDIAN

NOTE: MEDIANS WITH BARRIER CURB DO NOT REQUIRE AN EDGE LINE

TYPICAL LANE AND EDGE LINE MARKING



BICYCLE & EQUESTRIAN

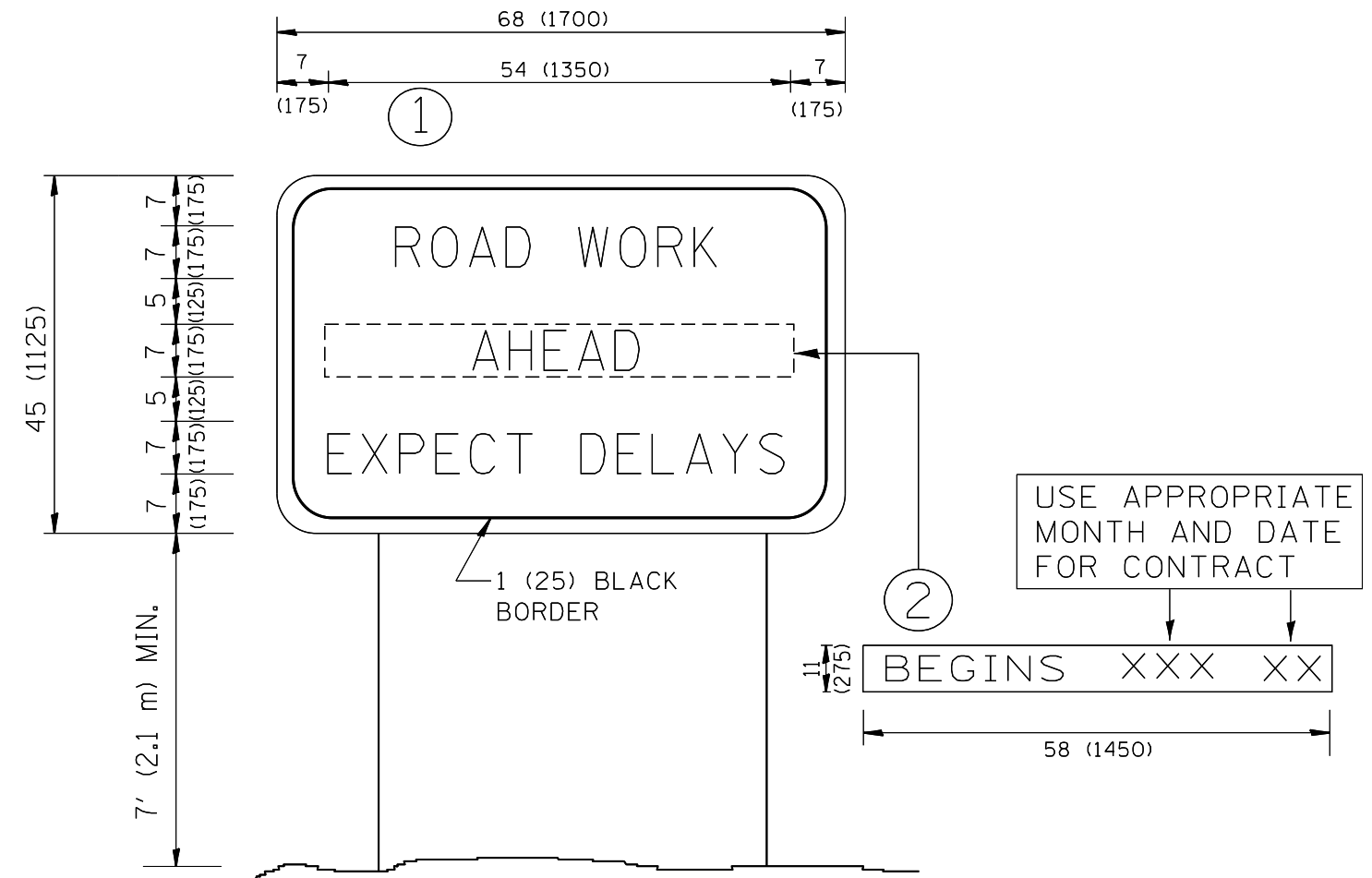
SCHOOL

PEDESTRIAN

DETAIL "A"

DETAIL "B"

TYPICAL CROSSWALK MARKING



NOTES:

1. USE BLACK LETTERING ON ORANGE BACKGROUND.
2. ERECT SIGNS IN ADVANCE OF THE LOCATION FOR THE "ROAD CONSTRUCTION AHEAD" SIGN AT LOCATIONS AS DIRECTED BY THE ENGINEER.
3. ERECT SIGN ① WITH INSTALLED PANEL ② ONE WEEK PRIOR TO THE START OF CONSTRUCTION.
4. REMOVE PANEL ② SOON AFTER THE START OF CONSTRUCTION.
5. SEE SPECIAL PROVISION FOR "TEMPORARY INFORMATION SIGNING" FOR ADDITIONAL INFORMATION.
6. ONE SIGN ASSEMBLY EQUALS 25.70 SQ. FT. (2.3 SQ. M.)
7. SHALL BE PAID FOR AS TEMPORARY INFORMATION SIGNING.

ALL DIMENSIONS ARE IN INCHES (MILLIMETERS) UNLESS OTHERWISE SHOWN.

FILE NAME =	USER NAME = dahhnr	DESIGNED -	REVISED - R. MIRS 09-15-97
et:\pwork\pwork\dahhnr\d0424261\dist\d.dgn		DRAWN -	REVISED - R. MIRS 12-11-97
	PLOT SCALE = 100.0000' / 1in.	CHECKED -	REVISED - T. RAMMACHER 02-02-99
	PLOT DATE = 4/1/2015	DATE -	REVISED - C. JUCIUS 01-31-07

**STATE OF ILLINOIS
DEPARTMENT OF TRANSPORTATION**

**ARTERIAL ROAD
INFORMATION SIGN**

SCALE: NONE SHEET NO. 1 OF 1 SHEETS STA. TO STA.

F.A.P. RTE.	SECTION	COUNTY	TOTAL SHEETS	SHEET NO.
607	128B-BR(14)	WILL	14	14
TC-22		CONTRACT NO. 62A44		
FED. ROAD DIST. NO. 1 ILLINOIS FED. AID PROJECT				