

STATE OF ILLINOIS
DEPARTMENT OF TRANSPORTATION
DIVISION OF HIGHWAYS

**PROPOSED
HIGHWAY PLANS**

FAI ROUTE 57 (I-57)
SECTION (46, 38-1, 38-2) I-2
PROJECT: ACHSIP-0057(319)
HIGH TENSION CABLE MEDIAN BARRIER
IROQUOIS & KANKAKEE COUNTIES

C-93-091-15

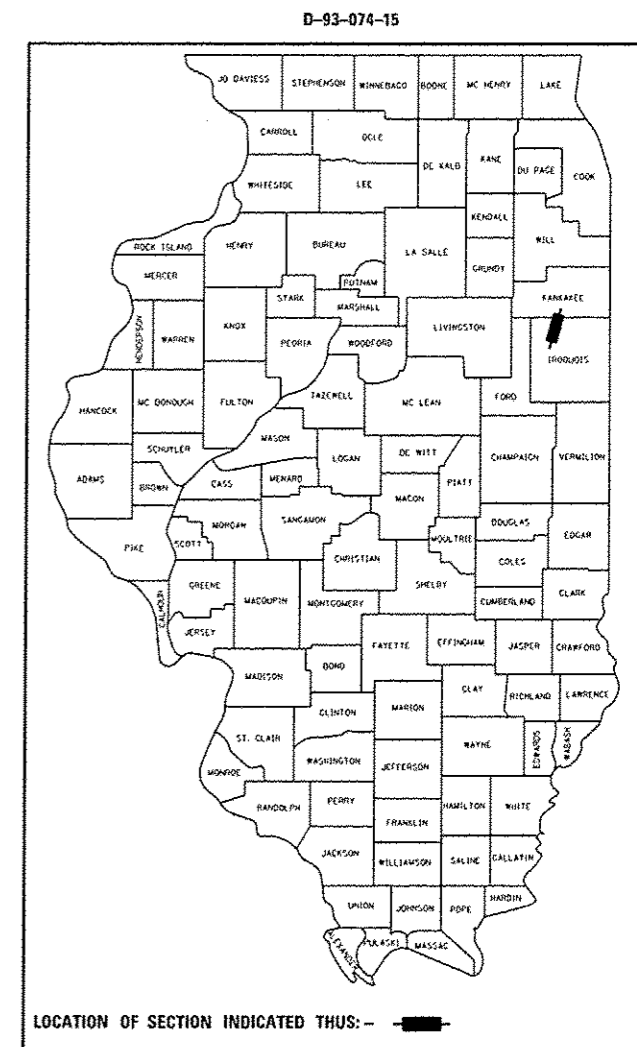
F.A.I. RTE.	SECTION	COUNTY	TOTAL SHEETS	SHEET NO.
57	(46, 38-1, 38-2) I-2	ILLINOIS	7	1
CONTRACT NO. 66E70			•IROQUOIS AND KANKAKEE	

INDEX OF SHEETS

- 1 COVER SHEET
- 2 GENERAL NOTES
- 3 SUMMARY OF QUANTITIES
- 4 TYPICAL SECTIONS
- 5 SCHEDULES
- 6 STANDARD 701400 (SPECIAL)
- 7 DETAILS

STANDARDS

- 000001-06 STANDARD SYMBOLS, ABBREVIATIONS AND PATTERNS
- 001006 DECIMAL OF AN INCH AND OF A FOOT
- 701101-04 OFF-ROAD OPERATIONS MULTILANE, 15' (4.5 m) TO 24' (600 mm) FROM PAVEMENT EDGE
- 701106-02 OFF-ROAD OPERATIONS, MULTILANE, MORE THAN 15' (4.5 m) AWAY
- 701406-09 LANE CLOSURE, FREEWAY/EXPRESSWAY, DAY OPERATIONS ONLY
- 701901-04 TRAFFIC CONTROL DEVICES



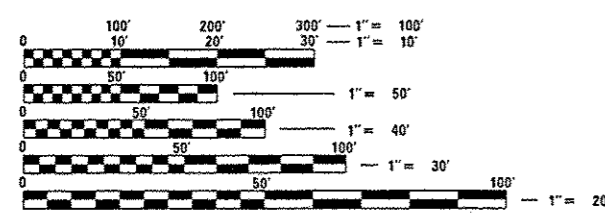
I-57, RURAL INTERSTATE
2013 ADT = 16,900
P.V. = 64.3% S.U. = 6.7% M.U. = 29.0%

STATE OF ILLINOIS
DEPARTMENT OF TRANSPORTATION
DIVISION OF HIGHWAYS

SUBMITTED March 27 2015
Paul Costello
DEPUTY DIRECTOR OF HIGHWAYS, REGION ENGINEER

May 8 2015
John D. Baranzelli, P.E.
ENGINEER OF DESIGN AND ENVIRONMENT

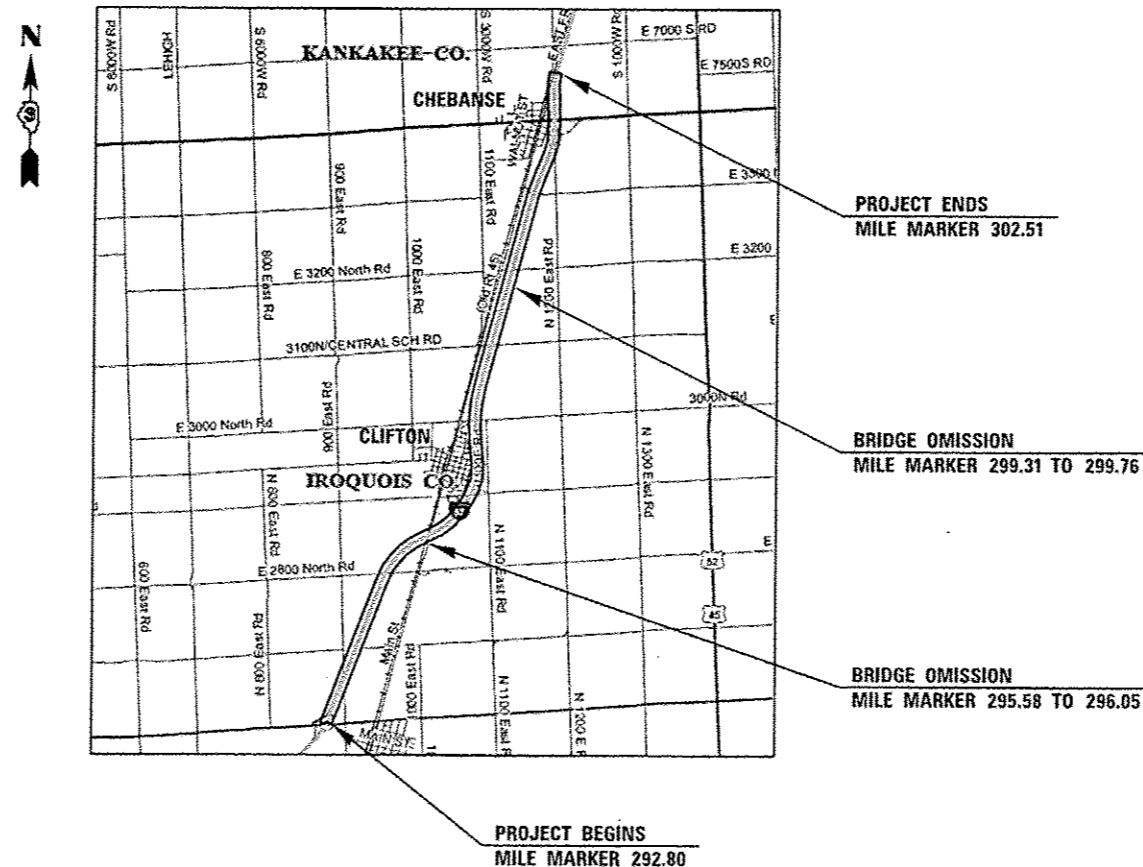
May 8 2015
Omer Osman, P.E.
DIRECTOR OF HIGHWAYS, CHIEF ENGINEER



FULL SIZE PLANS HAVE BEEN PREPARED USING STANDARD ENGINEERING SCALES. REDUCED SIZED PLANS WILL NOT CONFORM TO STANDARD SCALES. IN MAKING MEASUREMENTS ON REDUCED PLANS, THE ABOVE SCALES MAY BE USED.

J.U.L.I.E.
JOINT UTILITY LOCATION INFORMATION FOR EXCAVATION
1-800-892-0123
OR 811

PROJECT ENGINEER: SCOTT FERGUSON, P.E.
UNIT CHIEF: MARC BUDZYNSKI
DISTRICT 3 NO. (815) 434-6131
CONTRACT NO. 66E70



GROSS LENGTH = 51,269 FT. = 9.71 MILES
NET LENGTH = 46,411 FT. = 8.79 MILES

PRINTED BY THE AUTHORITY
OF THE STATE OF ILLINOIS

GENERAL NOTES

THE THICKNESS OF HMA SHOWN ON THE PLANS IS THE NOMINAL THICKNESS. DEVIATIONS FROM THE NOMINAL THICKNESS WILL BE PERMITTED WHEN SUCH DEVIATIONS OCCUR DUE TO IRREGULARITIES IN THE EXISTING SURFACE OR BASE ON WHICH THE HMA IS PLACED.

THE ENGINEER WILL BE THE SOLE JUDGE CONCERNING CURING TIME FOR THE VARIOUS HMA LIFTS.

FOR STABILIZATION, ALL TYPE III BARRICADES WILL REQUIRE A MINIMUM OF FOUR SAND BAGS PER BARRICADE.

ALL EXCAVATED MATERIAL, WHICH INCLUDES DIGGING OR GRADING OF ANY SOIL OR FILL MATERIAL, WITH THE EXCEPTION OF AGGREGATE FILLS, MUST BE INCORPORATED WITHIN THE IDOT RIGHT OF WAY DUE TO ENVIRONMENTAL DOCUMENTATION REQUIREMENTS.

ANY REFERENCE TO A STANDARD IN THESE PLANS SHALL BE INTERPRETED TO MEAN THE EDITION AS INDICATED BY THE SUBNUMBER SHOWN IN THE LIST OF STANDARDS OR THE COPY INCLUDED IN THESE PLANS.

MEMBERS OF JULIE KNOWN TO BE WITHIN THE LIMITS OF THE IMPROVEMENT ARE:

NON-MEMBERS OF JULIE KNOWN TO BE WITHIN THE LIMITS OF THE IMPROVEMENT ARE:

THE CONTRACTOR SHALL CONTACT JULIE AT LEAST 48 HOURS PRIOR TO EXCAVATION TO DETERMINE WHICH UTILITIES ARE IN THE AREA.

COMMITMENTS:

STATE OF ILLINOIS
DEPARTMENT OF TRANSPORTATION
DISTRICT THREE

PREPARED BY: Tom Brown
DISTRICT STUDIES & PLANS ENGINEER

DATE: March 27, 2015

EXAMINED BY: Hub Jung
DISTRICT CONSTRUCTION ENGINEER

Wayne Phillips
DISTRICT MATERIALS ENGINEER

Bruce A. Kuehn
DISTRICT OPERATIONS ENGINEER

FILE NAME =	USER NAME = budzynskim	DESIGNED -	REVISED -
c:\pov_work\pexidot\budzynskim\d04272691D	66E70-ahs-deto1a.dgn	DRAWN -	REVISED -
	PLD1 SCALE = 1/8"=1'-0"	CHECKED -	REVISED -
	FLOT DATE = 3/27/2015	DATE -	REVISED -

STATE OF ILLINOIS
DEPARTMENT OF TRANSPORTATION

GENERAL NOTES

SCALE: SHEET OF SHEETS STA. TO STA.

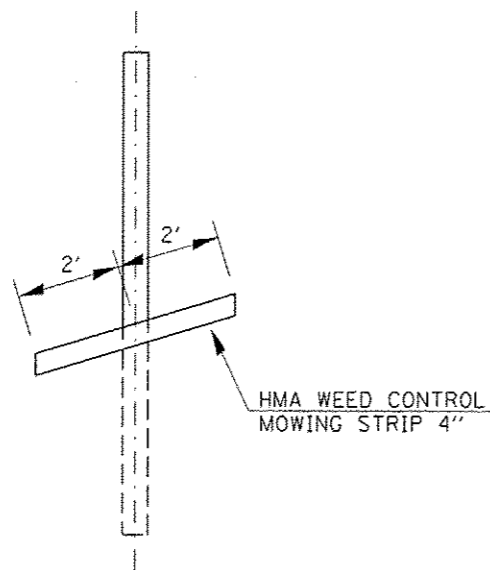
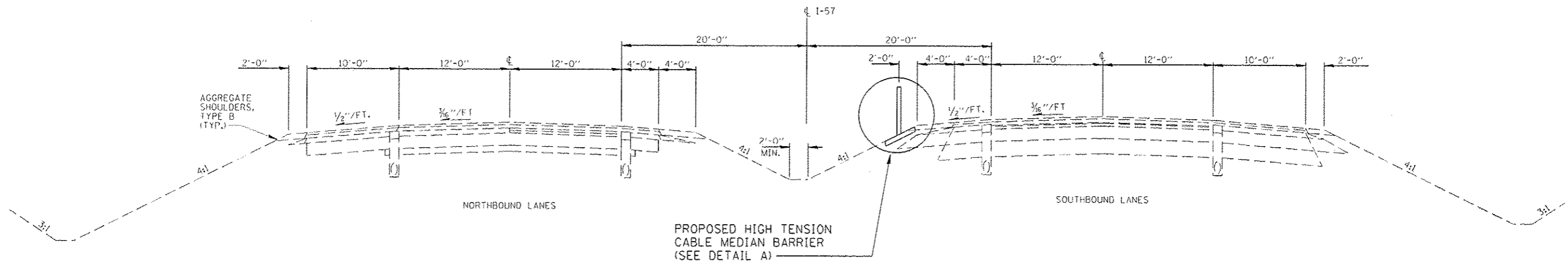
F.A.I. RTE.	SECTION	COUNTY	TOTAL SHEETS	SHEET NO.
57	(46, 38-1, 38-2) 1-2		7	2
CONTRACT NO. 66E70			ILLINOIS FED. AID PROJECT	

*IROQUOIS AND KANKAKEE

90% FED./10% STATE
 CONSTRUCTION CODE
 IROQUOIS CO. ROADWAY 0021 RURAL
 KANKAKEE CO. ROADWAY 0021 RURAL

CODE NO.	ITEM	UNIT	TOTAL QUANTITY	IROQUOIS CO. ROADWAY 0021 RURAL	KANKAKEE CO. ROADWAY 0021 RURAL
64401100	HIGH TENSION CABLE MEDIAN BARRIER	FOOT	46411	43454	2957
64401200	HIGH TENSION CABLE MEDIAN BARRIER DEMONSTRATION	EACH	1	0.5	0.5
64401300	HIGH TENSION CABLE MEDIAN BARRIER TERMINALS	EACH	14	13	1
67100100	MOBILIZATION	L SUM	1	0.5	0.5
70106800	CHANGEABLE MESSAGE SIGN	CAL MO	3	1.5	1.5
78202000	TERMINAL MARKER - POST MOUNTED	EACH	14	13	1
X0325231	CABLE GUARD MARKER	EACH	1164	1090	74
X7010410	SPEED DISPLAY TRAILER	CAL MO	3	1.5	1.5
X7010600	TRAFFIC CONTROL AND PROTECTION, STANDARD 701406, SPECIAL	L SUM	1	0.5	0.5
X0500002	HOT-MIX ASPHALT MDW STRIP	SO YD	20627	19313	1314

10



DETAIL A

FILE NAME : c:\work\p\1dot\budzynski\42726\1D	USER NAME : budzynski	DESIGNED -	REVISED -
	66E78-sh1-deta1a.dgn	DRAWN -	REVISED -
	PLOT SCALE : 1/8" = 1' - 0"	CHECKED -	REVISED -
	PLOT DATE : 3/27/2015	DATE -	REVISED -

**STATE OF ILLINOIS
DEPARTMENT OF TRANSPORTATION**

TYPICAL SECTIONS

SCALE: SHEET OF SHEETS STA. TO STA.

F.A.I. RTE.	SECTION	COUNTY	TOTAL SHEETS	SHEET NO.
57	(46, 38-1, 38-2) 1-2		7	4
CONTRACT NO. 66E70				
ILLINOIS FED. AID PROJECT				

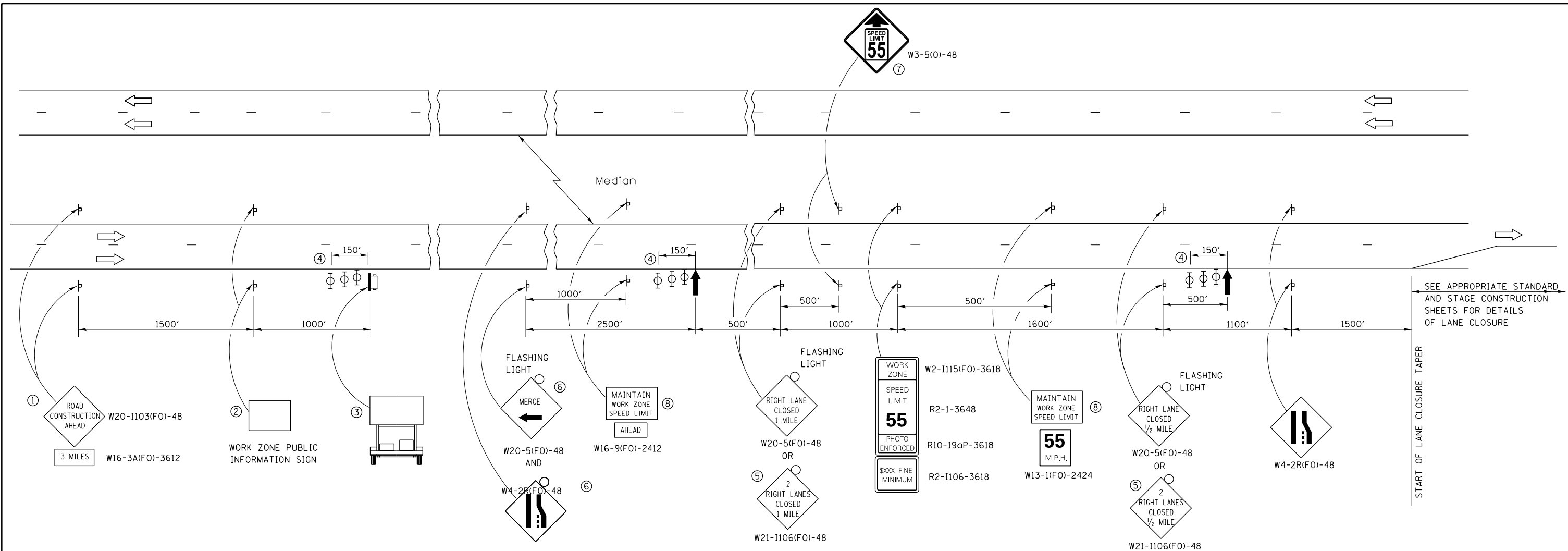
Rev. •IROQUOIS AND KANKAKEE

CABLE BARRIER INSTALLATION SCHEDULE								
LOCATION			LENGTH	HT CBL MEDIAN BARRIER	CABLE GUARD MARKER	HT CBL MED BAR TERM	TERMINAL MARKER - POST MOUNTED	HMA MOW STRIP
M.M.	TO	M.M.	MILES	FOOT	EACH	EACH	EACH	SO YD
IROQUOIS COUNTY								
IL 116*		CROSSOVER						
292.80	TO	294.74	1.94	10243	257	2	2	4553
CROSSOVER		CROSSOVER						
294.74	TO	295.58	0.84	4435	111	2	2	1971
BRIDGE OMISSION								
CROSSOVER		CROSSOVER						
296.05	TO	297.38	1.33	7022	176	2	2	3121
CROSSOVER		CROSSOVER						
297.38	TO	298.73	1.35	7128	179	2	2	3168
CROSSOVER		CROSSOVER						
298.73	TO	299.31	0.58	3062	77	2	2	1361
BRIDGE OMISSION								
CROSSOVER		CROSSOVER						
299.76	TO	300.81	1.05	5544	139	2	2	2464
CROSSOVER		CO. LINE**						
300.81	TO	301.95	1.14	6019	151	1	1	2675
IROQUOIS COUNTY SUBTOTAL			8.23	43454	1090	13	13	19313
KANKAKEE COUNTY								
CO. LINE**		CROSSOVER						
301.95	TO	302.51	0.56	2957	74	1	1	1314
KANKAKEE COUNTY SUBTOTAL			0.56	2957	74	1	1	1314
TOTAL			8.79	46411	1164	14	14	20627

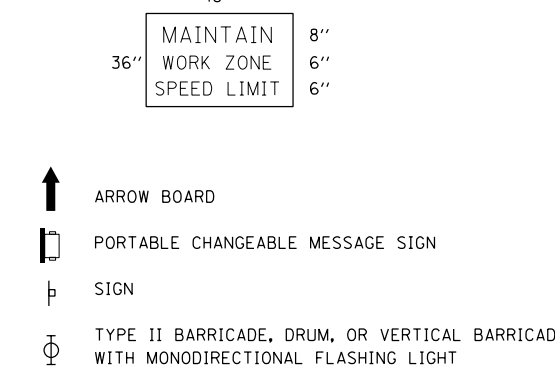
- *THE PROJECT WILL BEGIN JUST NORTH OF THE PIER LOCATED IN THE MEDIAN
- **CABLE MEDIAN BARRIER WILL BE CONTINUOUS THROUGH THE IROQUOIS/KANKAKEE COUNTY LINE

FILE NAME : c:\pwworkspace\bdrynski\102427261\10	USER NAME : bdrynski	DESIGNED -	REVISED -	STATE OF ILLINOIS DEPARTMENT OF TRANSPORTATION	SCHEDULES			F.A.I. RTE.	SECTION	COUNTY	TOTAL SHEETS	SHEET NO.
		DRAWN -	REVISED -					57	(46, 38-1, 38-2) 1-2		7	5
	PLOT SCALE : 1/8" = 1'-0"	CHECKED -	REVISED -		SCALE:	SHEET	OF	SHEETS	STA.	TO STA.	CONTRACT NO. 66E70	
	PLOT DATE : 1/27/2015	DATE -	REVISED -		ILLINOIS FED. AID PROJECT							

Rev. *IROQUOIS AND KANKAKEE



- ① THE ROAD CONSTRUCTION AHEAD SIGN SHALL BE LOCATED 3 MILES IN ADVANCE OF THE PROJECT LIMITS.
- ② THE MESSAGE AND SIZE OF THE WORK ZONE PUBLIC INFORMATION SIGN SHALL BE AS SPECIFIED BY THE DEPARTMENT.
- ③ TO BE PLACED IN THE MEDIAN WHEN FEASIBLE. THE MESSAGE BOARD SHALL BE USED TO DISPLAY STATUS OF LANES WITHIN THE PROJECT. THE PRIMARY MESSAGES SHALL BE:
 "RIGHT LANE CLOSED" / " x MILES AHEAD"
 "LEFT LANE CLOSED" / " x MILES AHEAD"
 "ALL LANES OPEN"
- ④ THREE, TYPE II BARRICADES, DRUMS, OR VERTICAL BARRICADES AT 50' CENTERS.
- ⑤ THIS SIGN SHALL BE USED WHEN 2 LANES ARE CLOSED.
- ⑥ WHEN THE LEFT LANE IS CLOSED, SWITCH THESE TWO SIGNS AND THE DIRECTION OF THE MERGE ARROW.
- ⑦ THIS SIGN SHALL ONLY BE USED IF THE EXISTING SPEED LIMIT IS GREATER THAN 65 MPH.
- ⑧ 48"x36" FLUORESCENT ORANGE SIGN WITH BLACK LETTERS.



GENERAL NOTE:

THIS STANDARD IS USED WHERE AT ANY TIME A LANE IS CLOSED ON A FREEWAY/EXPRESSWAY.

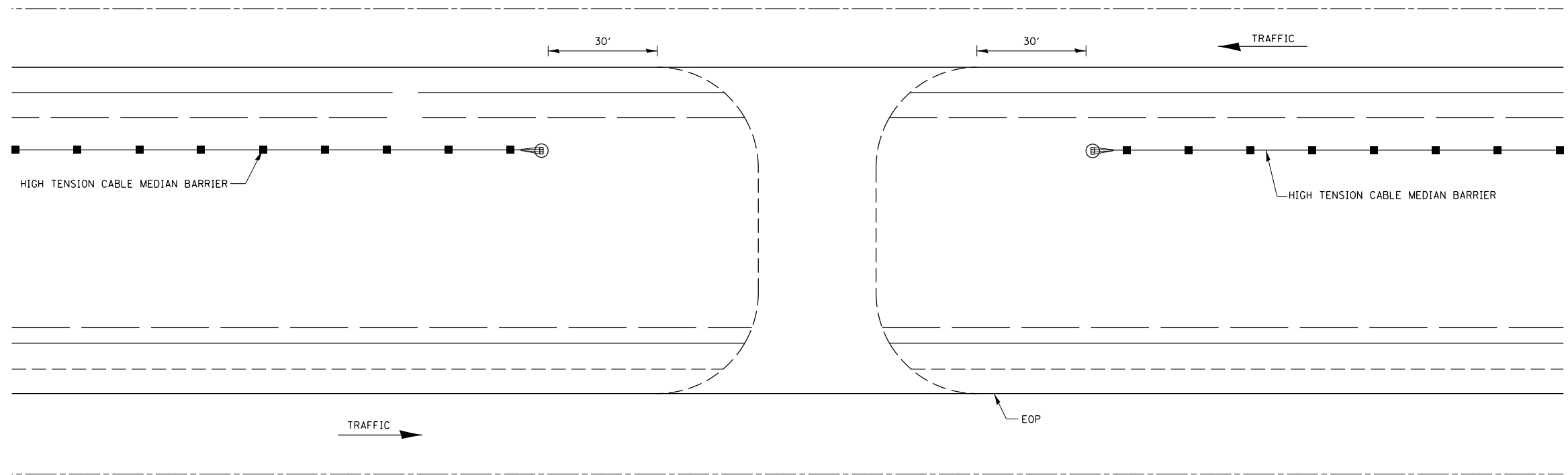
WHEN THE LEFT LANE IS CLOSED, LEFT LANE CLOSED SIGNS SHALL BE SUBSTITUTED FOR THE RIGHT LANE CLOSED SIGNS.

THE FIRST TWO SIGNS AND THE MESSAGE BOARD ARE STATIONARY. THE OTHER SIGNS AND ARROWBOARDS SHALL BE MOVED AS NECESSARY TO MAINTAIN THE REQUIRED DISTANCE FROM THE START OF THE LANE CLOSURE TAPER(S).

SEE SPECIAL PROVISIONS.

ALL DIMENSIONS ARE IN INCHES UNLESS OTHERWISE SHOWN.

FILE NAME =	USER NAME = budzynskim	DESIGNED -	REVISED -	STATE OF ILLINOIS DEPARTMENT OF TRANSPORTATION	STANDARD 701400 (SPECIAL)	F.A.I. RTE.	SECTION	COUNTY	TOTAL SHEETS	SHEET NO.	
et:\pw\work\p\idot\budzynskim\d0427269\066E70-sh-t-details.dgn		DRAWN -	REVISED -			57	(46, 38-1, 38-2) I-2	*	7	6	
PLOT SCALE = 100.0000' / 1in.		CHECKED -	REVISED -			CONTRACT NO. 66E70					
PLOT DATE = 3/27/2015		DATE -	REVISED -			ILLINOIS FED. AID PROJECT					



MAINTENANCE CROSSOVER DETAIL

FILE NAME =	USER NAME = budzynskim	DESIGNED -	REVISED -
ca:\pwork\pwork\budzynskim\d0427269\066E70-shd-details.dgn		DRAWN -	REVISED -
	PLOT SCALE = 100.0000' / 1in.	CHECKED -	REVISED -
	PLOT DATE = 3/27/2015	DATE -	REVISED -

**STATE OF ILLINOIS
DEPARTMENT OF TRANSPORTATION**

DETAILS			
SCALE:	SHEET	OF	SHEETS
	STA.		TO STA.

F.A.I. RTE.	SECTION	COUNTY	TOTAL SHEETS	SHEET NO.
57	(46, 38-1, 38-2) I-2	*	7	7
ILLINOIS FED. AID PROJECT			CONTRACT NO. 66E70	

•IROOUOIS AND KANKAKEE