

F.A.I. RTE.	SECTION	COUNTY	TOTAL SHEETS	SHEET NO.
180	(06-3, 078-1)MBPM-3	BUREAU	9	1
		ILLINOIS	CONTRACT NO. 66E73	

1. COVER SHEET
2. GENERAL NOTES
3. SUMMARY OF QUANTITIES
4. TYPICAL SECTIONS
5. SCHEDULES
6. TRAFFIC CONTROL AND PROTECTION STANDARD 701402 (SPECIAL)
7. PAVEMENT MARKING
- 8-9. STRUCTURE PLANS

DEPARTMENT OF TRANSPORTATION

DIVISION OF HIGHWAYS

PROPOSED HIGHWAY PLANS

FAI 180 (I-180)
(06-3, 078-1)MBPM-3

BRIDGE REPAIRS
BUREAU COUNTY

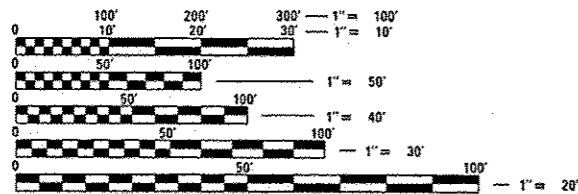
C-93-097-15

STANDARDS

- 000001-06 STANDARD SYMBOLS, ABBREVIATIONS AND PATTERNS
- 001001-02 AREAS OF REINFORCEMENT BARS
- 001006 DECIMAL OF AN INCH AND OF A FOOT
- 635011-02 REFLECTOR MARKER AND MOUNTING DETAILS
- 701101-04 OFF-ROAD OPERATIONS MULTILANE, 15' (4.5 m) TO 24" (600 mm) FROM PAVEMENT EDGE
- 701106-02 OFF-ROAD OPERATIONS, MULTILANE, MORE THAN 15' (4.5 m) AWAY
- 701400-08 APPROACH TO LANE CLOSURE, FREEWAY/EXPRESSWAY
- 701428 TRAFFIC CONTROL SETUP AND REMOVAL FREEWAY/EXPRESSWAY
- 701901-04 TRAFFIC CONTROL DEVICES
- 704001-07 TEMPORARY CONCRETE BARRIER
- 701011-04
- 701426-07

PROJECT LOCATION

STRUCTURE NUMBER 078-0001
CARRYING FAI RT. 180 (I-180)
OVER THE ILLINOIS RIVER
1.82 MILES EAST OF IL 26
AT HENNEPIN



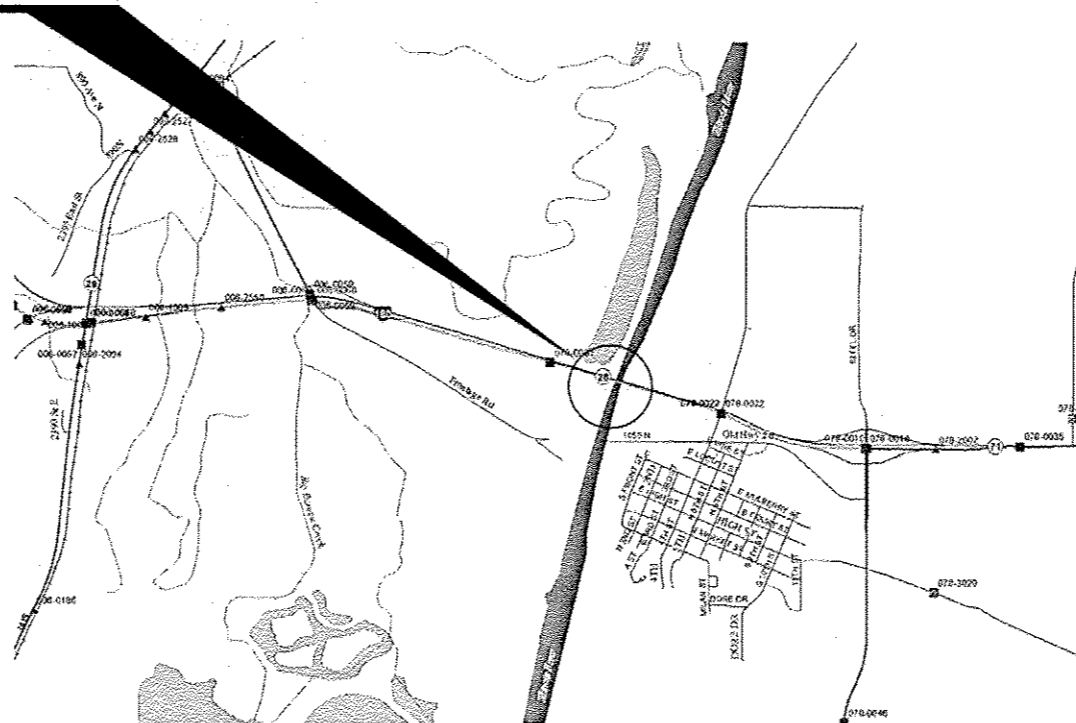
FULL SIZE PLANS HAVE BEEN PREPARED USING STANDARD ENGINEERING SCALES. REDUCED SIZED PLANS WILL NOT CONFORM TO STANDARD SCALES. IN MAKING MEASUREMENTS ON REDUCED PLANS, THE ABOVE SCALES MAY BE USED.

J.U.L.I.E.
JOINT UTILITY LOCATION INFORMATION FOR EXCAVATION
1-800-892-0123
OR 811

DISTRICT 3 (815) 434-6131

PROJECT ENGINEER JOE KANNEL P.E.
UNIT CHIEF RON WOODSHANK
TOWNSHIP LEEPERTOWN

CONTRACT NO. 66E73



POINT LOCATION
LOCATION MAP NOT TO SCALE



LOCATION OF SECTION INDICATED THIS: - [thick black line] -

RURAL	
INTERSTATE	
FAI 180 (I-180)	
2013	
ADT	2600
P.V.	75%
S.U.	8.65%
M.U.	16.35%

STATE OF ILLINOIS
DEPARTMENT OF TRANSPORTATION
DIVISION OF HIGHWAYS

SUBMITTED *April 2 2015*

Paul Loeteb
DEPUTY DIRECTOR OF HIGHWAYS, REGION ENGINEER

May 8 2015
John D. Baranzelli P.E.
ENGINEER OF DESIGN AND ENVIRONMENT

May 8 2015
Omer Osman P.E.
DIRECTOR OF HIGHWAYS, CHIEF ENGINEER

PRINTED BY THE AUTHORITY
OF THE STATE OF ILLINOIS

GENERAL NOTES

PLAN DIMENSIONS AND DETAILS RELATIVE TO EXISTING PLANS ARE SUBJECT TO ROUTINE VARIATIONS. THE CONTRACTOR SHALL FIELD VERIFY EXISTING DIMENSIONS AND DETAILS AFFECTING NEW CONSTRUCTION AND MAKE NECESSARY APPROVED ADJUSTMENT PRIOR TO CONSTRUCTION OR ORDERING OF MATERIALS. SUCH VARIATIONS SHALL NOT BE CAUSE FOR ADDITIONAL COMPENSATION FOR A CHANGE IN THE SCOPE OF THE WORK. HOWEVER, THE CONTRACTOR WILL BE PAID FOR THE QUANTITY FURNISHED BASED UPON THE UNIT BID FOR THE WORK.

AS PER ARTICLE 107.20 OF THE STANDARD SPECIFICATIONS WHENEVER PUBLIC OR PRIVATE PROPERTY IS DAMAGE OR DESTROYED DUE TO THE OPERATIONS OF THE CONTRACTOR, THE CONTRACTOR SHALL, AT NO ADDITIONAL COST TO THE DEPARTMENT, RESTORE SUCH PROPERTY TO A CONDITION EQUAL TO THE EXISTING BEFORE SUCH DAMAGE OR INJURY WAS DONE BY REPAIRING, REBUILDING, OR REPLACING IT AS MAY BE DIRECTED, OR THE CONTRACTOR SHALL OTHERWISE MAKE GOOD SUCH DAMAGE OR DESTRUCTION IN AN ACCEPTABLE MANNER.

THE CONTRACTOR SHALL NOT CLOSE A LANE IN THE EASTBOUND AND WESTBOUND TRAFFIC LANES AT THE SAME TIME UNLESS APPROVED IN WRITING BY THE ENGINEER.

FOR STABILIZATION, ALL TYPE III BARRICADES SHALL REQUIRE A MINIMUM OF FOUR SAND BAGS PER BARRICADE.

THE CONTRACTOR SHALL BE RESPONSIBLE FOR PROTECTING UTILITY PROPERTY FROM CONSTRUCTION OPERATIONS AS OUTLINED IN ARTICLE 107.31 OF THE STANDARD SPECIFICATIONS. THE "JULIE" NUMBER IS 1-800-892-0123. A MINIMUM OF FORTY-EIGHT (48) HOURS ADVANCE NOTICE IS REQUIRED.

WHERE SECTION OR SUBSECTION MONUMENTS ARE ENCOUNTERED, THE ENGINEER SHALL BE NOTIFIED BEFORE SUCH MONUMENTS ARE REMOVED. THE CONTRACTOR SHALL PROTECT AND CAREFULLY PRESERVE ALL MONUMENTS UNTIL AN AUTHORIZED SURVEYOR OR AGENT HAS WITNESSED OR OTHERWISE REFERENCED THEIR LOCATION. THE CONTRACTOR SHALL BE RESPONSIBLE FOR HAVING AN AUTHORIZED SURVEYOR REESTABLISH ANY SECTION OR SUBSECTION MONUMENTS DESTROYED BY HIS OPERATIONS.

ANY REFERENCE TO A STANDARD IN THESE PLANS SHALL BE INTERPRETED TO MEAN THE EDITION AS INDICATED BY THE SUBNUMBER LISTED ON THE INDEX OF SHEETS OR THE COPY OF THE STANDARD INCLUDED IN THESE PLANS.

COMMITMENTS

DATE: April 2, 2015

PREPARED BY: *Don Brannil*
DISTRICT STUDIES & PLANS ENGINEER

EXAMINED BY: *Harold Jones*
DISTRICT CONSTRUCTION ENGINEER

Ray Phillips
DISTRICT MATERIALS ENGINEER

Bruce A. Vachon
DISTRICT OPERATIONS ENGINEER

FILE NAME =	USER NAME = potelyj	DESIGNED - Z.JL	REVISED -	STATE OF ILLINOIS DEPARTMENT OF TRANSPORTATION	GENERAL NOTES	F.A.I. RTE.	SECTION	COUNTY	TOTAL SHEETS	SHEET NO.
c:\pwwork\poto\tpotelyj\d0429120\0366673-sh1-detailed.dgn	DRAWN - Z.JL	REVISED -	180			106-3, 078-1MBPM-3	BUREAU	9	2	
PLOT SCALE = 100.0000' / 1" =	CHECKED - RLW	REVISED -	CONTRACT NO. 66E73							
PLOT DATE = 3/23/2015	DATE -	REVISED -	ILLINOIS FED. AID PROJECT							
SCALE: SHEET 1 OF 1 SHEETS STA. TO STA.										

CODE NO.	ITEM	UNIT	TOTAL QUANTITY	CONSTR. CODE
				MBPM 100% STATE BRIDGE 0014 S.N. 078-0001
67100100	MOBILIZATION	LSUM	1	1
70400100	TEMPORARY CONCRETE BARRIER	FOOT	3330	3330
70400200	RELOCATE TEMPORARY CONCRETE BARRIER	FOOT	3330	3330
70600250	IMPACT ATTENUATORS, TEMPORARY (NON- REDIRECTIVE), TEST LEVEL 3	EACH	1	1
70600350	IMPACT ATTENUATORS, RELOCATE (NON- REDIRECTIVE), TEST LEVEL 3	EACH	1	1
78009004	MODIFIED URETHANE PAVEMENT MARKING - LINE 4"	FOOT	6460	6460
78009006	MODIFIED URETHANE PAVEMENT MARKING - LINE 6"	FOOT	2400	2400
78300100	PAVEMENT MARKING REMOVAL	SO FT	3332	3332
X7010208	TRAFFIC CONTROL AND PROTECTION, STANDARD 701402 (SPECIAL)	EACH	1	1
X7010410	SPEED DISPLAY TRAILER	CAL MO	1	1
Z0012754	STRUCTURAL REPAIR OF CONCRETE (DEPTH EQUAL TO OR LESS THAN 5 INCHES)	SO FT	580	580
Z0030850	TEMPORARY INFORMATION SIGNING	SO FT	42	42

*SPECIALITY ITEMS

FILE NAME *	USER NAME *	DESIGNED - ZJL	REVISED -	STATE OF ILLINOIS DEPARTMENT OF TRANSPORTATION	SUMMARY OF QUANTITIES	F.A.I. RTE.	SECTION	COUNTY	TOTAL SHEETS	SHEET NO.	
		DRAWN - ZJL	REVISED -			180	(06-3, 078-1)MBPM-3	BUREAU	9	3	
		CHECKED - RLW	REVISED -			CONTRACT NO. 66E73					
		DATE -	REVISED -			ILLINOIS FED. AID PROJECT					
		PLOT SCALE * 100.0000 1/2" = 1'		SCALE:		SHEET 1 OF 2 SHEETS		STA.	TO STA.		
		PLOT DATE * 3/25/2015									

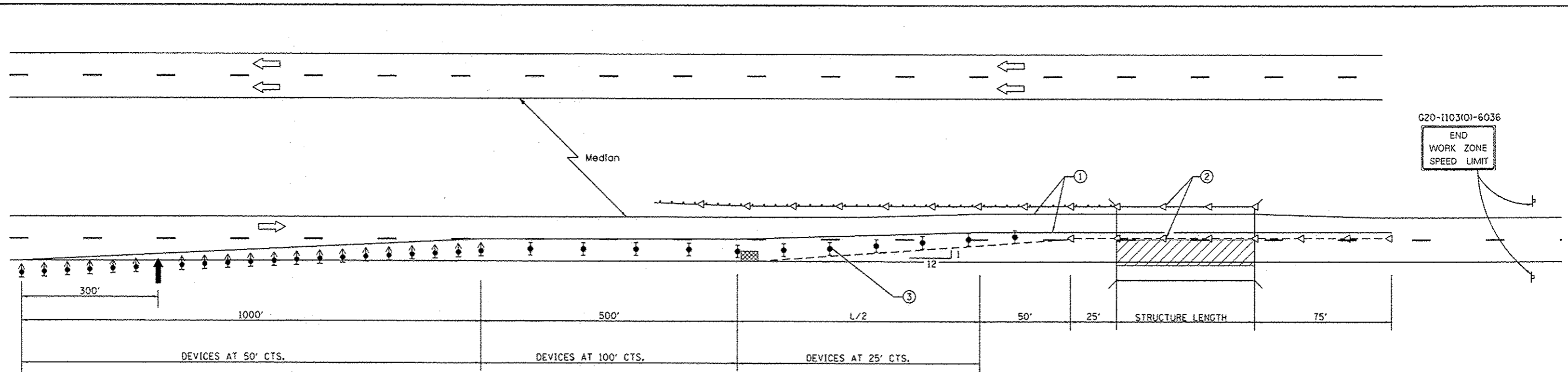
SCHEDULE			
LOCATION	REPAIR LENGTH	STRUCTURAL REPAIR OF CONCRETE (DEPTH < TO 5") (PARAPET)	
STA. - STA.	FOOT	SQ FT	
EAST BOUND LANE			
53+28 - 53+64	36	36	
57+18 - 57+62	44	44	
57+59 - 58+13	54	54	
58+19 - 58+39	20	20	
60+64 - 60+83	19	19	
61+09 - 61+27	18	18	
61+39 - 61+57	18	18	
69+28 - 69+76	48	48	
75+26 - 75+46	20	20	
77+97 - 78+15	18	18	
80+55 - 80+69	14	14	
EAST BOUND TOTAL	309	309	

SCHEDULE			
LOCATION	REPAIR LENGTH	STRUCTURAL REPAIR OF CONCRETE (DEPTH < TO 5") (PARAPET)	
STA. - STA.	FOOT	SQ FT	
WEST BOUND LANE			
65+99 - 65+89	10	10	
64+41 - 64+05	36	36	
58+15 - 57+82	33	33	
56+74 - 56+47	27	27	
56+36 - 56+21	15	15	
55+33 - 55+19	14	14	
55+11 - 54+97	14	14	
53+67 - 53+53	14	14	
52+57 - 51+95	62	62	
51+68 - 51+50	18	18	
51+11 - 50+83	28	28	
WEST BOUND TOTAL	271	271	

FILE NAME =	USER NAME = pately	DESIGNED - ZJL	REVISED -	STATE OF ILLINOIS DEPARTMENT OF TRANSPORTATION	SCHEDULES	F.A.I. RTE.	SECTION	COUNTY	TOTAL SHEETS	SHEET NO.	
cr:\pwork\puidat\pately\09129120\0366	73-shr-details.dgn	DRAWN - ZJL	REVISED -			180	(06-3, DT8-1MBPM-3)	BUREAU	9	5	
	PLOT SCALE = 100.0000 / 1 in.	CHECKED - RLW	REVISED -			CONTRACT NO. 66E73					
	PLOT DATE = 3/23/2015	DATE -	REVISED -			SCALE:	SHEET 1 OF 2 SHEETS	STA.	TO STA.		ILLINOIS FED. AID PROJECT

G20-1103(0)-6036

END
WORK ZONE
SPEED LIMIT



SEE STANDARD 701400 FOR APPROACH
START OF LANE CLOSURE TAPER

SYMBOLS

- ↑ ARROW BOARD
- ▨ WORK AREA
- ↑ SIGN
- ↕ DIRECTION INDICATOR BARRICADE WITH STEADY BURN MONODIRECTIONAL LIGHT
- ⊥ TYPE II BARRICADE, DRUM, OR VERTICAL BARRICADE WITH STEADY BURN MONODIRECTIONAL LIGHT
- TEMPORARY CONCRETE BARRIER
- ◁ MONODIRECTIONAL BARRIER WALL/GUARDRAIL MARKER
- ▣ IMPACT ATTENUATOR

- ① TEMPORARY PAVEMENT MARKING TAPE SHALL BE PLACED THROUGHOUT THE TAPER AND ALONG-SIDE THE WORK AREA. THE RIGHT EDGE LINE SHALL BE WHITE AND THE LEFT EDGE LINE SHALL BE YELLOW.
- ② BARRIER WALL/GUARDRAIL MARKERS AT 25' (7.6 M). MARKERS ON RIGHT SHALL BE SHALL BE CRYSTAL AND MARKERS ON LEFT SHALL BE AMBER.
- ③ VERTICAL BARRICADES SHALL NOT BE USED IN LANE SHIFT TAPER.

GENERAL NOTES

THIS STANDARD IS USED WHERE AT ANY TIME ANY VEHICLE, EQUIPMENT, WORKERS OR THEIR ACTIVITIES WILL ENCRUCH ON THE PAVEMENT OR ON THE SHOULDER WITHIN 24 (600) OF THE EDGE OF PAVEMENT FOR DAYLIGHT OPERATION EXCEEDING ONE DAY AND WHERE TEMPORARY CONCRETE BARRIER IS UTILIZED.

THIS STANDARD MUST ALWAYS BE USED IN COMBINATION WITH STANDARD 701400.

WHEN WORK IS BEING PERFORMED IN THE LEFT LANE, THE SET UP WOULD BE A MIRROR IMAGE TO WHAT IS SHOWN.

TEMPORARY CONCRETE BARRIER SHALL BE ACCORDING TO STANDARD 704001.

CALCULATE L AS FOLLOWS:

NORMAL POSTED SPEED FORMULAS

45 MPH (80 KM/H) OR MORE ENGLISH (METRIC) L=(WXS) L=0.65(WXS)

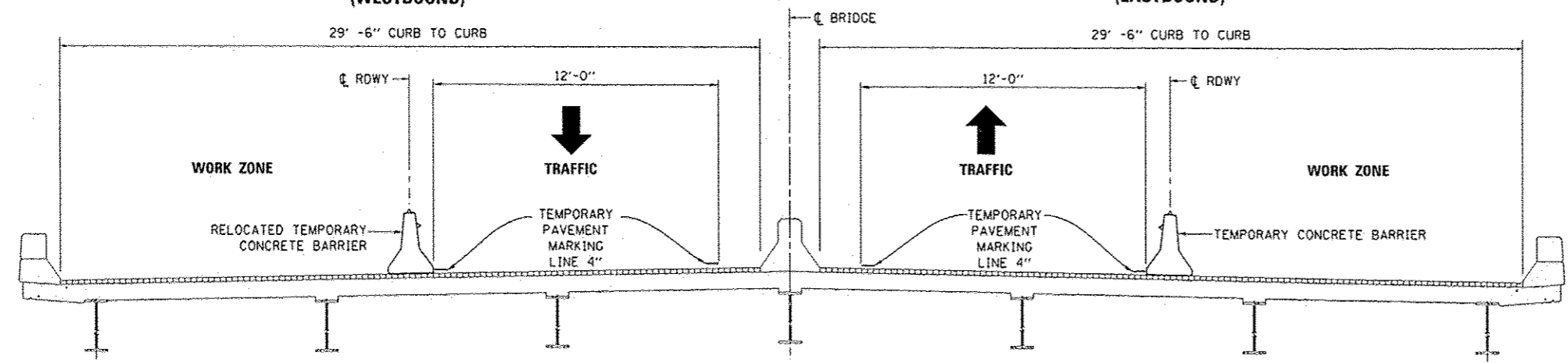
W = Width of offset in feet (meters).

S = Normal posted speed in mph (km/h).

ALL DIMENSIONS ARE IN INCHES (MILLIMETERS) UNLESS OTHERWISE SHOWN.

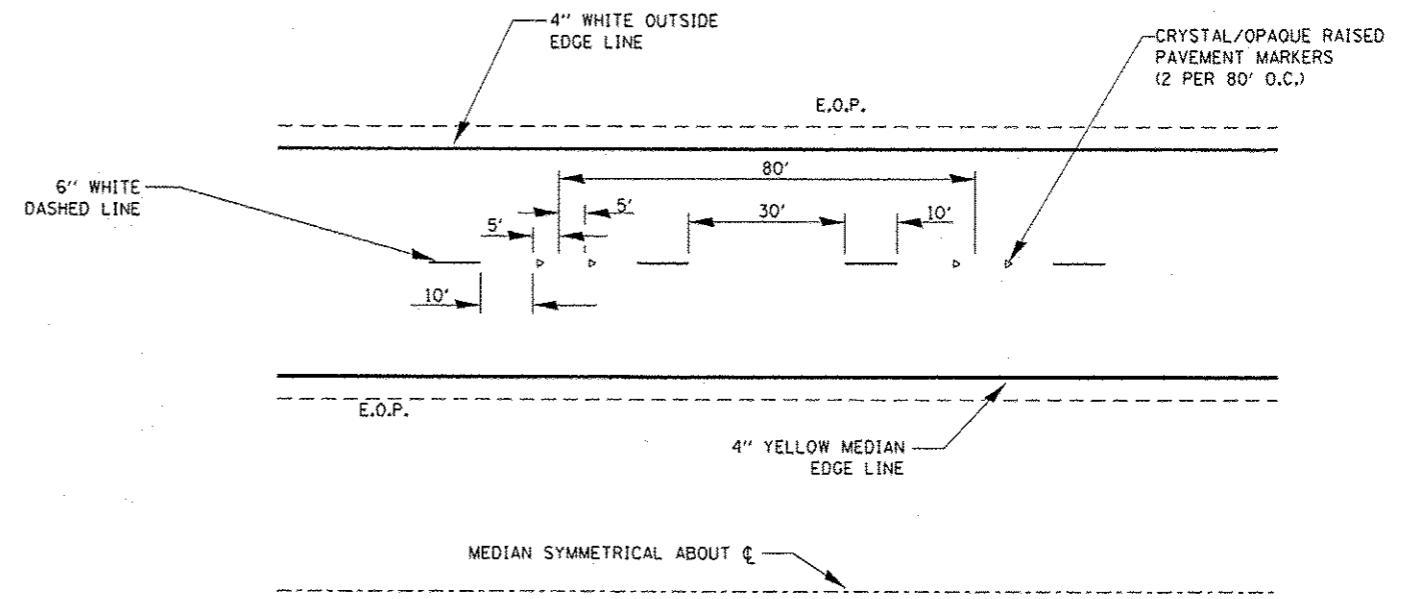
STAGE II CONSTRUCTION (WESTBOUND)

STAGE I CONSTRUCTION (EASTBOUND)



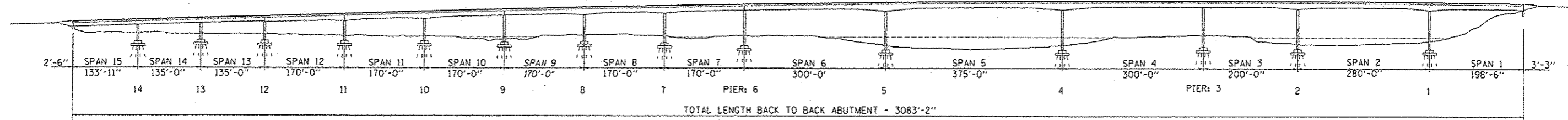
CROSS SECTION (LOOKING EAST)

FILE NAME =	USER NAME = patelvj	DESIGNED - ZJL	REVISED -	STATE OF ILLINOIS DEPARTMENT OF TRANSPORTATION	TRAFFIC CONTROL AND PROTECTION STANDARD 701402 (SPECIAL)	F.A.I. RTE.	SECTION	COUNTY	TOTAL SHEETS	SHEET NO.	
c:\pwwork\pwwork\patelvj\d0429120\03661	73-shct\detailed.dgn	DRAWN - ZJL	REVISED -			180	106-3, 078-11MBPM-3	ILLINOIS	9	6	
	PLOT SCALE = 100.0000 1" = 100'	CHECKED - RLW	REVISED -			CONTRACT NO. 66E73		ILLINOIS FED. AID PROJECT			
	PLOT DATE = 3/23/2019	DATE -	REVISED -			SCALE:	SHEET 2 OF 2 SHEETS	STA. TO STA.			



TYPICAL PAVEMENT MARKINGS

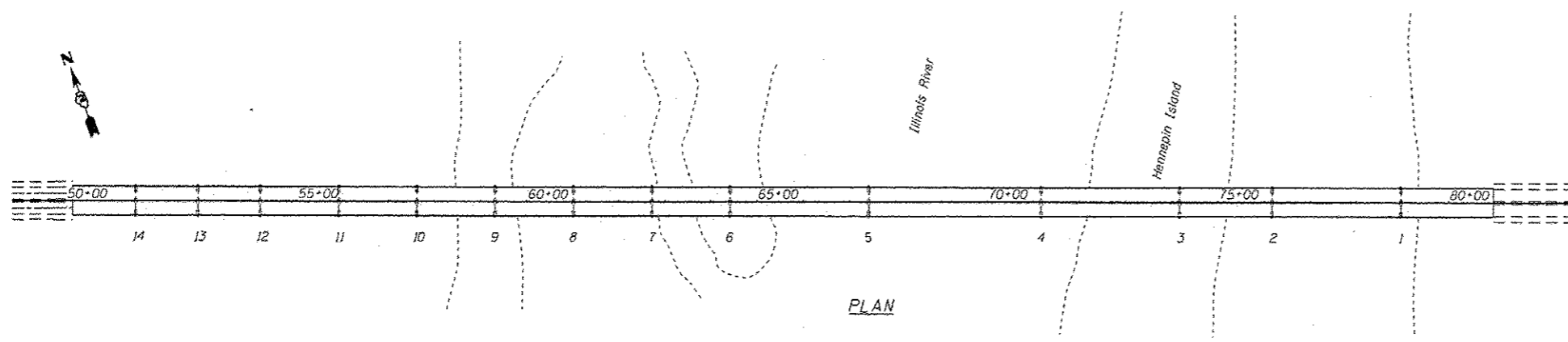
FILE NAME =	USER NAME = pateljj	DESIGNED - ZJL	REVISED -	STATE OF ILLINOIS DEPARTMENT OF TRANSPORTATION	PAVEMENT STRIPING	F.A.I. RTE. 180	SECTION 106-3, DT8-1MBPM-3	COUNTY	TOTAL SHEETS 9	SHEET NO. 7
c:\pwork\pwork\pateljj\091210\03665	73-sh1-details.dgn	DRAWN - ZJL	REVISED -			CONTRACT NO. 66E73	ILLINOIS FED. AID PROJECT			
	PLOT SCALE = 100.0000 / in.	CHECKED - RLW	REVISED -			SCALE:	SHEET 1 OF 1 SHEETS	STA.	TO STA.	
	PLOT DATE = 3/23/2015	DATE -	REVISED -							



ELEVATION

GENERAL NOTES

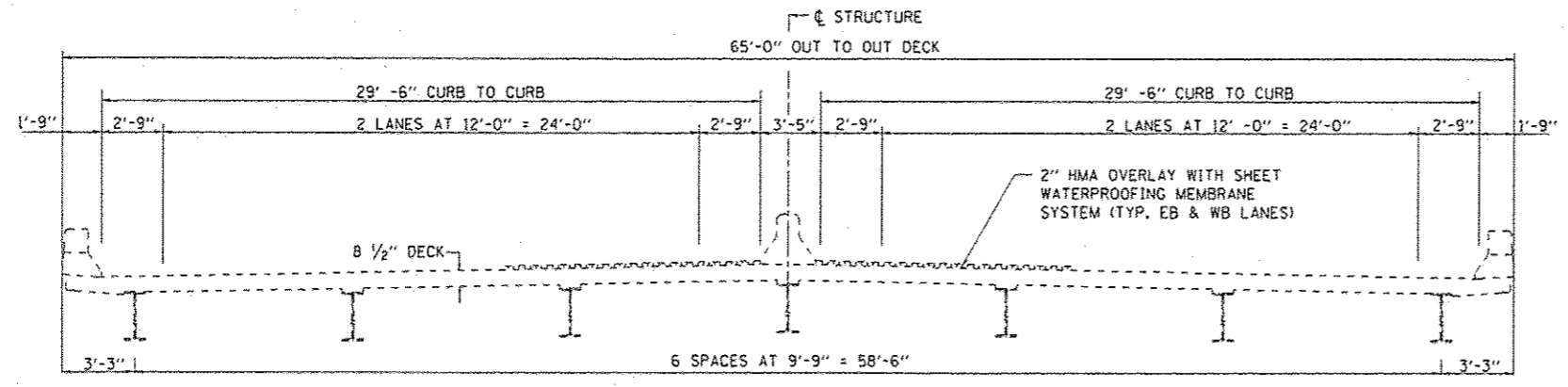
1. PLAN DIMENSIONS AND DETAILS RELATIVE TO EXISTING PLANS ARE SUBJECT TO NOMINAL CONSTRUCTION VARIATIONS. THE CONTRACTOR SHALL FIELD VERIFY EXISTING DIMENSIONS AND DETAILS AFFECTING NEW CONSTRUCTION AND MAKE NECESSARY APPROVED ADJUSTMENTS PRIOR TO CONSTRUCTION OR ORDERING OF MATERIALS. SUCH VARIATIONS SHALL NOT BE CAUSE FOR ADDITIONAL COMPENSATION FOR A CHANGE IN SCOPE OF WORK; HOWEVER, THE CONTRACTOR WILL BE PAID FOR THE QUANTITY ACTUALLY FURNISHED AT THE UNIT PRICE BID FOR THE WORK.



PLAN

TOTAL BILL OF MATERIAL

ITEM	UNIT	078-0001	TOTAL
STRUCTURAL REPAIR OF CONCRETE (DEPTH EQUAL TO OR LESS THAN 5 INCHES)	SO FT	580	580



CROSS SECTION



David Carl Puzey 5/1/15
Expires 11/30/16

FILE NAME :	USER NAME :	DESIGNED - ZJL	REVISOR -	STATE OF ILLINOIS DEPARTMENT OF TRANSPORTATION	EXISTING STRUCTURE PLANS FOR STRUCTURE NO. 078-0001	F.A.I. RTE.	SECTION	COUNTY	TOTAL SHEETS	SHEET NO.	
	DRAWN - ZJL	CHECKED - RLW	REVISOR -			180	(06-3, 078-1MBPM-3)	BUREAU	9	8	
	PLT SCALE = 100.0000 1/4" = 1'	DATE -	REVISOR -			CONTRACT NO. 66ET3		ILLINOIS FED. AID PROJECT			
	PLT DATE = 3/24/2015					SCALE: _____	SHEET 1 OF 2 SHEETS	STA. 50+17	TO STA. 80+97		

