

SEE SHEET 2 FOR INDEX OF SHEETS

STATE OF ILLINOIS

DEPARTMENT OF TRANSPORTATION
DIVISION OF HIGHWAYS

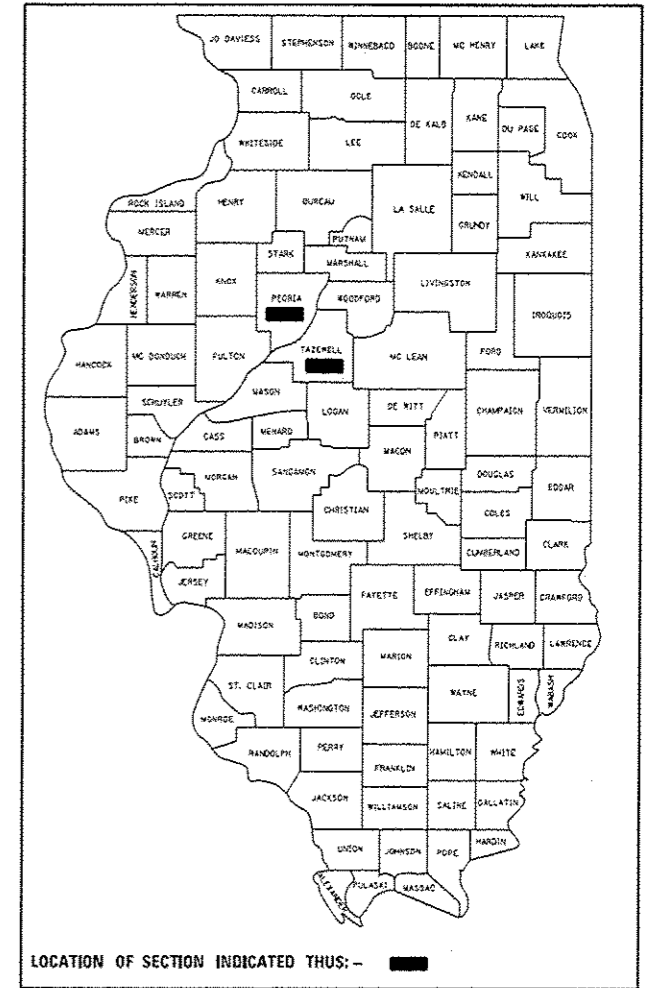
PROPOSED
HIGHWAY PLANS

VARIOUS ROUTES
SECTION D4 TRAFFIC SIGNALS 2015
PEORIA-TAZEWELL COUNTIES

C-94-069-15

RTE.	SECTION	COUNTY	TOTAL SHEETS	SHEET NO.
VAR.	D4 TRAFFIC SIGNALS 2015	PEORIA-TAZEWELL	14	1
ILLINOIS CONTRACT NO. 68C53				

D-94-034-15



LOCATION OF SECTION INDICATED THUS: - [Black Box]

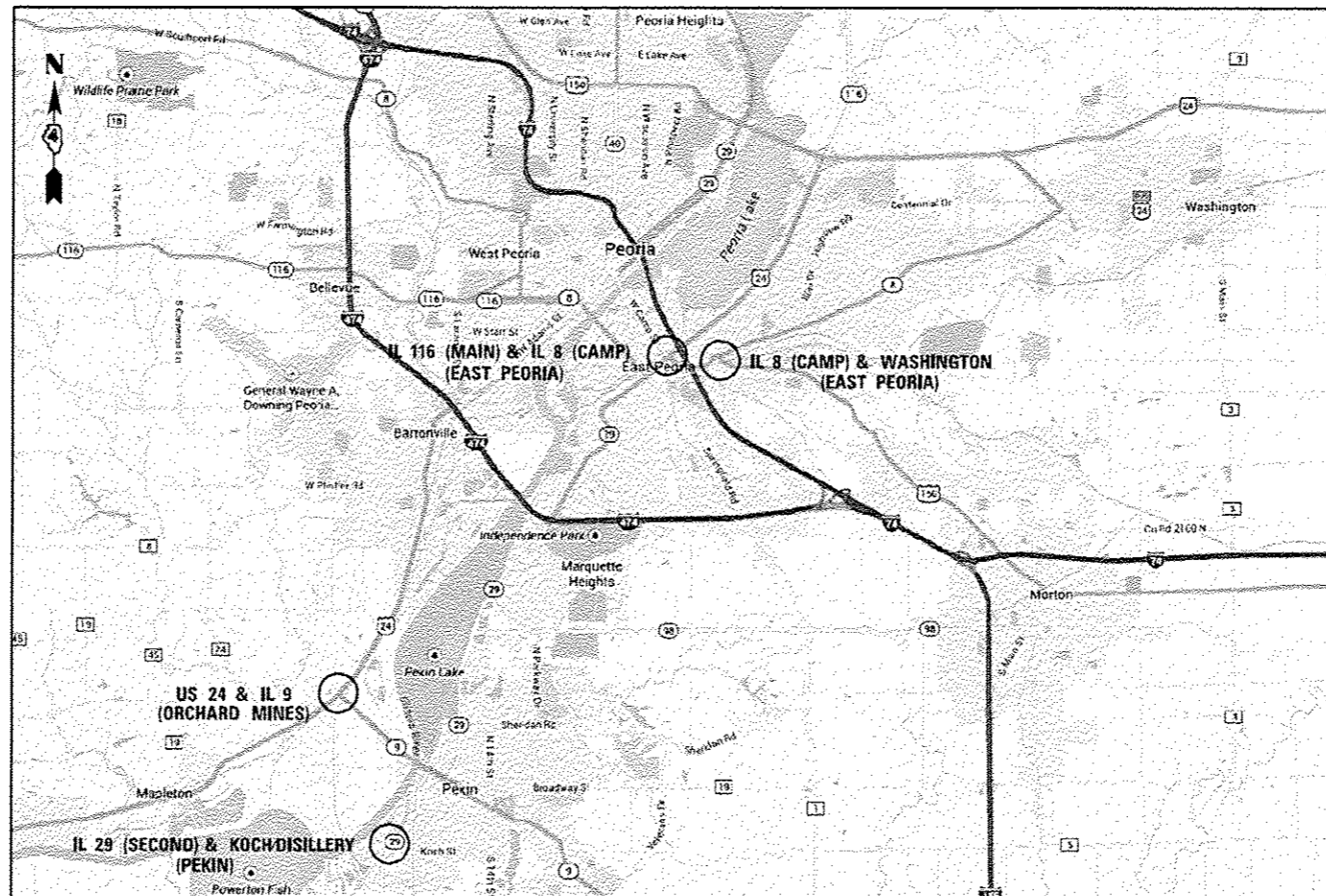
HIGHWAY STANDARDS

SEE SHEET 2 FOR A LIST OF APPLICABLE HIGHWAY STANDARDS

PROJECT DESCRIPTION

INSTALLATION OF TRAFFIC SIGNAL CONTROLLER CABINETS, BATTERY BACKUP SYSTEMS, LED BLANKOUT SIGNS, AND RAILROAD INTERCONNECT RELAYS AT FIVE INTERSECTIONS LOCATED IN PEORIA AND TAZEWELL COUNTIES.

J.U.L.I.E.
JOINT UTILITY LOCATION INFORMATION FOR EXCAVATION
1-800-892-0123
OR 811



PROJECT ENGINEER: ERIC HOWALD (309) 671-4481
PROJECT MANAGER: RANDY LANINGA (309) 671-4477
CATALOG NO. 35260-00D
CONTRACT NO. 68C53

STATE OF ILLINOIS
DEPARTMENT OF TRANSPORTATION
DIVISION OF HIGHWAYS

SUBMITTED *March 25 20 15*
Kenneth A. Granett
DEPUTY DIRECTOR OF HIGHWAYS, REGION ENGINEER

May 8 20 15
Don D. Baranzelli
ENGINEER OF DESIGN AND ENVIRONMENT

May 8 20 15
Orin C. Moran
DIRECTOR OF HIGHWAYS, CHIEF ENGINEER

PRINTED BY THE AUTHORITY
OF THE STATE OF ILLINOIS

COMMITMENTS

THERE ARE NO COMMITMENTS MADE IN CONJUNCTION WITH THIS PROJECT.

INDEX OF SHEETS	
PAGE	DESCRIPTION
1	COVER SHEET
2	COMMITMENTS, CONSTRUCTION NOTES, INDEX OF SHEETS, AND HIGHWAY STANDARDS
3	SUMMARY OF QUANTITIES
4	SCHEDULE OF QUANTITIES
5	PROPOSED TRAFFIC SIGNALS - IL 8 (CAMP) & WASHINGTON
6	PROPOSED RAILROAD PREEMPTION DETAILS - IL 8 (CAMP) & WASHINGTON
7	PROPOSED TRAFFIC SIGNALS - IL 116 (MAIN) & IL 8 (CAMP)
8	PROPOSED TRAFFIC SIGNALS - IL 9 (SECOND) & KOCH/DISTILLERY
9	PROPOSED RAILROAD PREEMPTION DETAILS - IL 9 (SECOND) & KOCH/DISTILLERY
10	PROPOSED TRAFFIC SIGNALS - US 24 & IL 9 (ORCHARD MINES)
11	PROPOSED RAILROAD PREEMPTION DETAILS - US 24 & IL 9 (ORCHARD MINES)
12	BATTERY BACKUP SYSTEM CABINET DETAIL
13	BATTERY BACKUP SYSTEM CABINET WIRING DIAGRAM
14	BATTERY BACKUP SYSTEM BLOCK AND BYPASS SWITCH DIAGRAMS

CONTROLLER CABINET MODIFICATION - CONSTRUCTION NOTES	
1.	THE CONTRACTOR WILL BE ALLOWED TO PLACE THE INTERSECTION INTO ALL-RED FLASH MODE AND ALL-WAY STOP CONTROL BETWEEN THE HOURS OF 9AM TO 3:30PM TO INSTALL THE PROPOSED TRAFFIC SIGNAL CABINETS AND MAKE MODIFICATIONS TO THE EXISTING CONTROLLER CABINETS.
2.	THE CONTRACTOR SHALL FURNISH AND INSTALL A MINIMUM OF TWO STOP SIGNS PER APPROACH WHEN THE INTERSECTION IS OPERATING IN ALL-RED FLASH MODE OR ALL-WAY STOP CONTROL. THE STOP SIGNS SHALL BE DISPLAYED IN ACCORDANCE WITH ALL APPLICABLE MUTCD REQUIREMENTS.
3.	ALL COSTS (LABOR, MATERIALS, AND EQUIPMENT) ASSOCIATED WITH THESE REQUIREMENTS SHALL BE INCLUDED IN THE CONTRACT BID PRICE FOR THE PROPOSED TRAFFIC SIGNAL CABINET AND MODIFY EXISTING CONTROLLER CABINET PAY ITEMS. THERE WILL BE NO ADDITIONAL COMPENSATION FOR THIS WORK.

CONSTRUCTION NOTES	
1.	ANY MAINTENANCE OF EXISTING TRAFFIC SIGNALS WILL BE CONSIDERED EXTRA WORK IN ACCORDANCE WITH ARTICLE 109.04 OF THE STANDARD SPECIFICATIONS.
2.	THE LOCATION OF ALL UTILITIES AND PRIVATELY OWNED FACILITIES SHALL BE FIELD VERIFIED BY THE CONTRACTOR PRIOR TO THE INSTALLATION OF ANY COMPONENTS.
3.	THE CONTRACTOR SHALL BE RESPONSIBLE FOR LOCATING EXISTING IDOT ELECTRICAL FACILITIES AT HIS/HER OWN EXPENSE IF REQUIRED. THE CONTRACTOR SHALL ALSO BE LIABLE FOR ANY DAMAGE TO IDOT FACILITIES RESULTING FROM INACCURATE LOCATING.
4.	ELECTRICAL WORK SHALL CONFORM WITH NATIONAL, STATE, AND LOCAL CODES.
5.	ALL TRAFFIC SIGNAL HEAD BRACKETS ARE TO BE ALUMINUM WITH A NATURAL FINISH.
6.	THE EXISTING TRAFFIC SIGNALS SHALL REMAIN IN OPERATION DURING THE CONSTRUCTION OF THE PROPOSED TRAFFIC SIGNALS.
7.	THE CONTRACTOR SHALL PROVIDE ELECTRICAL CABLE SLACK IN ACCORDANCE WITH ARTICLE 873.03.
8.	ELECTRICAL CABLE WILL BE MEASURED FOR PAYMENT IN ACCORDANCE WITH ARTICLE 873.04.
9.	ALL SURPLUS MATERIALS SHALL BE DISPOSED OF IN ACCORDANCE WITH ARTICLE 202.03 OF THE STANDARD SPECIFICATIONS.
10.	REMOVAL OF EXISTING TRAFFIC SIGNAL COMPONENTS WILL NOT BE PAID FOR SEPARATELY, BUT SHALL BE INCLUDED IN THE UNIT BID PRICES FOR THE PROPOSED ITEMS.
11.	THE CONTRACTOR SHALL REMOVE THE EXISTING TRAFFIC SIGNAL CABINETS AND BATTERY BACKUP SYSTEMS AND DELIVER THEM TO THE IDOT TRAFFIC BUILDING LOCATED AT 1025 W. DETWEILLER DR, PEORIA. THE CONTRACTOR SHALL NOTIFY PAUL GRANT AT (309) 671-4474 FORTY-EIGHT HOURS IN ADVANCE OF EQUIPMENT DELIVERY. THE CONTRACTOR SHALL DISPOSE OF ALL OTHER ITEMS OFF OF THE RIGHT OF WAY AND REFLECT THE SALVAGE VALUE OF THESE ITEMS IN CONTRACT UNIT BID PRICES.
12.	THE CONTRACTOR SHALL RELOCATE ALL EXISTING PHOTOCCELL RELAYS, VIDEO DETECTION COMPONENTS, AND RADIO INTERCONNECT EQUIPMENT FROM EXISTING CONTROLLER CABINETS TO THE PROPOSED CONTROLLER CABINETS. THE COST OF THIS WORK SHALL BE INCLUDED IN THE PAY ITEMS FOR THE PROPOSED TRAFFIC SIGNAL CONTROLLER CABINETS.

HIGHWAY STANDARDS	
STANDARD	APPLICATION
000001-06	STANDARD SYMBOLS, ABBREVIATIONS, AND PATTERNS
001006	DECIMAL OF AN INCH AND OF A FOOT
701001-02	OFF-ROAD OPERATIONS, 2L, 2W, MORE THAN 4.5 M (15') AWAY
701006-05	OFF-ROAD OPERATIONS, 2L, 2W, 4.5 M (15') TO 600 MM (24") FROM PAVEMENT EDGE
701101-04	OFF-ROAD OPERATIONS, MULTILANE, 4.5 M (15') TO 600 MM (24") FROM PAVEMENT EDGE
701106-02	OFF-ROAD OPERATIONS, MULTILANE, MORE THAN 4.5 (15') AWAY
701701-09	URBAN LANE CLOSURE, MULTILANE INTERSECTION
701801-05	SIDEWALK, CORNER OR CROSSWALK CLOSURE
701901-04	TRAFFIC CONTROL DEVICES
857001-01	STANDARD PHASE DESIGNATION DIAGRAMS AND PHASE SEQUENCES
857006-01	SUPERVISED RAILROAD INTERCONNECT CIRCUIT
862001-01	UNINTERRUPTABLE POWER SUPPLY (UPS)
880006-01	TRAFFIC SIGNAL MOUNTING DETAILS
701602-07	URBAN LANE CLOSURE, MULTILANE, 2W WITH BIDIRECTIONAL LEFT TURN LANE

SUMMARY OF QUANTITIES

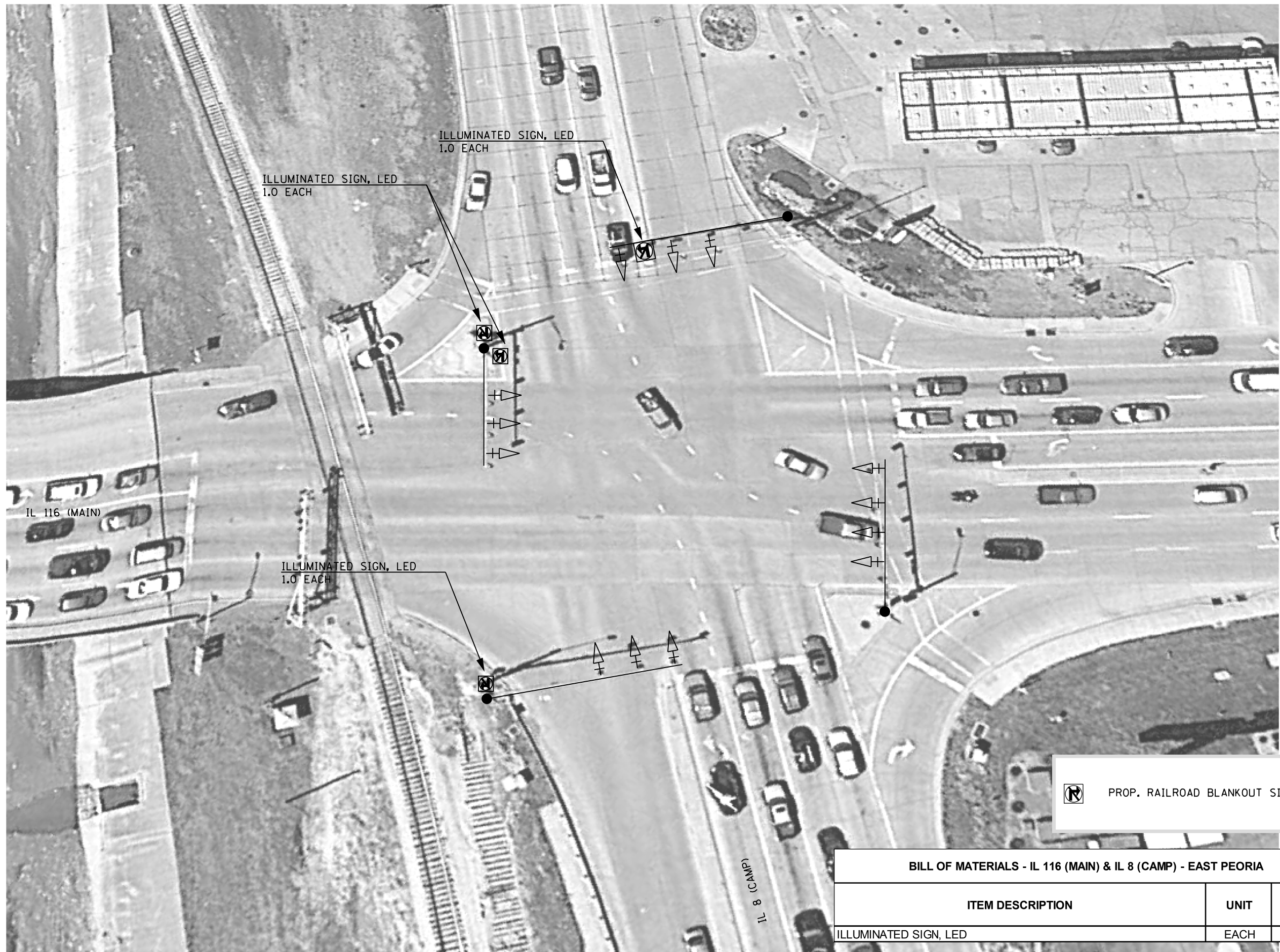
SUMMARY OF QUANTITIES				PEORIA COUNTY	TAZEWELL COUNTY	
				CONST. TYPE CODE 0021 100% STATE URBAN ORCHARD MINES	CONST. TYPE CODE 0021 100% STATE URBAN EAST PEORIA PEKIN	CONST. TYPE CODE 0021 90% STATE 10% CITY URBAN PEKIN
CODE	ITEM DESCRIPTION	UNIT	TOTAL QTY.			
67100100	MOBILIZATION	L SUM	1.0	0.25	0.50	0.25
70102635	TRAFFIC CONTROL AND PROTECTION, STANDARD 701701	L SUM	1.0	0.25	0.50	0.25
85700310	RAILROAD, FULL-ACTUATED CONTROLLER AND TYPE V CABINET	EACH	2.0		1.0	1.0
88500100	INDUCTIVE LOOP DETECTOR	EACH	13.0		9.0	4.0
89100400	ILLUMINATED SIGN, LED	EACH	8.0		6.0	2.0
89502210	MODIFY EXISTING CONTROLLER CABINET	EACH	1.0	1.0		
X0323071	SPARE FULL ACTUATED CONTROLLER, SPECIAL	EACH	2.0		1.0	1.0
Z0033068	TRAFFIC SIGNAL BATTERY BACKUP SYSTEM	EACH	2.0		1.0	1.0
Z0048665	RAILROAD PROTECTIVE LIABILITY INSURANCE	L SUM	1.0	0.25	0.50	0.25

9

FILE NAME =	USER NAME = aubreygn	DESIGNED -	REVISED -	STATE OF ILLINOIS DEPARTMENT OF TRANSPORTATION	SUMMARY OF QUANTITIES	RTE.	SECTION	COUNTY	TOTAL SHEETS	SHEET NO.
68C53 - Railroad Cabines Project ifinal	23-19.dgn	DRAWN -	REVISED -			VAR.	04 TRAFFIC SIGNALS 2015	PEORIA-TAZEWELL	14	3
	PLOT SCALE = 30.0500' / in.	CHECKED -	REVISED -		SCALE:					
	PLOT DATE = 3/27/2015	DATE -	REVISED -			STA.	TO STA.			
ILLINOIS FED. AID PROJECT										

SCHEDULE OF QUANTITIES

SCHEDULE OF QUANTITIES			PEORIA COUNTY	TAZEWELL COUNTY		
			US 24 & IL 9 ORCHARD MINES 100% IDOT	IL 116 (MAIN) & IL 8 (CAMP) EAST PEORIA 100% IDOT	IL 8 (CAMP) & WASHINGTON EAST PEORIA 100% IDOT	IL 9 (SECOND) & KOCH/DISTILLERY PEKIN 90% IDOT 10% CITY
ITEM DESCRIPTION	UNIT	TOTAL QTY.				
MOBILIZATION	L SUM	1.0	0.25	0.25	0.25	0.25
TRAFFIC CONTROL AND PROTECTION, STANDARD 701701	L SUM	1.0	0.25	0.25	0.25	0.25
RAILROAD, FULL-ACTUATED CONTROLLER AND TYPE V CABINET	EACH	2.0			1.0	1.0
INDUCTIVE LOOP DETECTOR	EACH	13.0			9.0	4.0
ILLUMINATED SIGN, LED	EACH	8.0		4.0	2.0	2.0
MODIFY EXISTING CONTROLLER CABINET	EACH	1.0	1.0			
SPARE FULL ACTUATED CONTROLLER, SPECIAL	EACH	2.0			1.0	1.0
TRAFFIC SIGNAL BATTERY BACKUP SYSTEM	EACH	2.0			1.0	1.0
RAILROAD PROTECTIVE LIABILITY INSURANCE	L SUM	1.0	0.25	0.25	0.25	0.25



 PROP. RAILROAD BLANKOUT SIGN

BILL OF MATERIALS - IL 116 (MAIN) & IL 8 (CAMP) - EAST PEORIA		
ITEM DESCRIPTION	UNIT	TOTAL QTY.
ILLUMINATED SIGN, LED	EACH	4.0

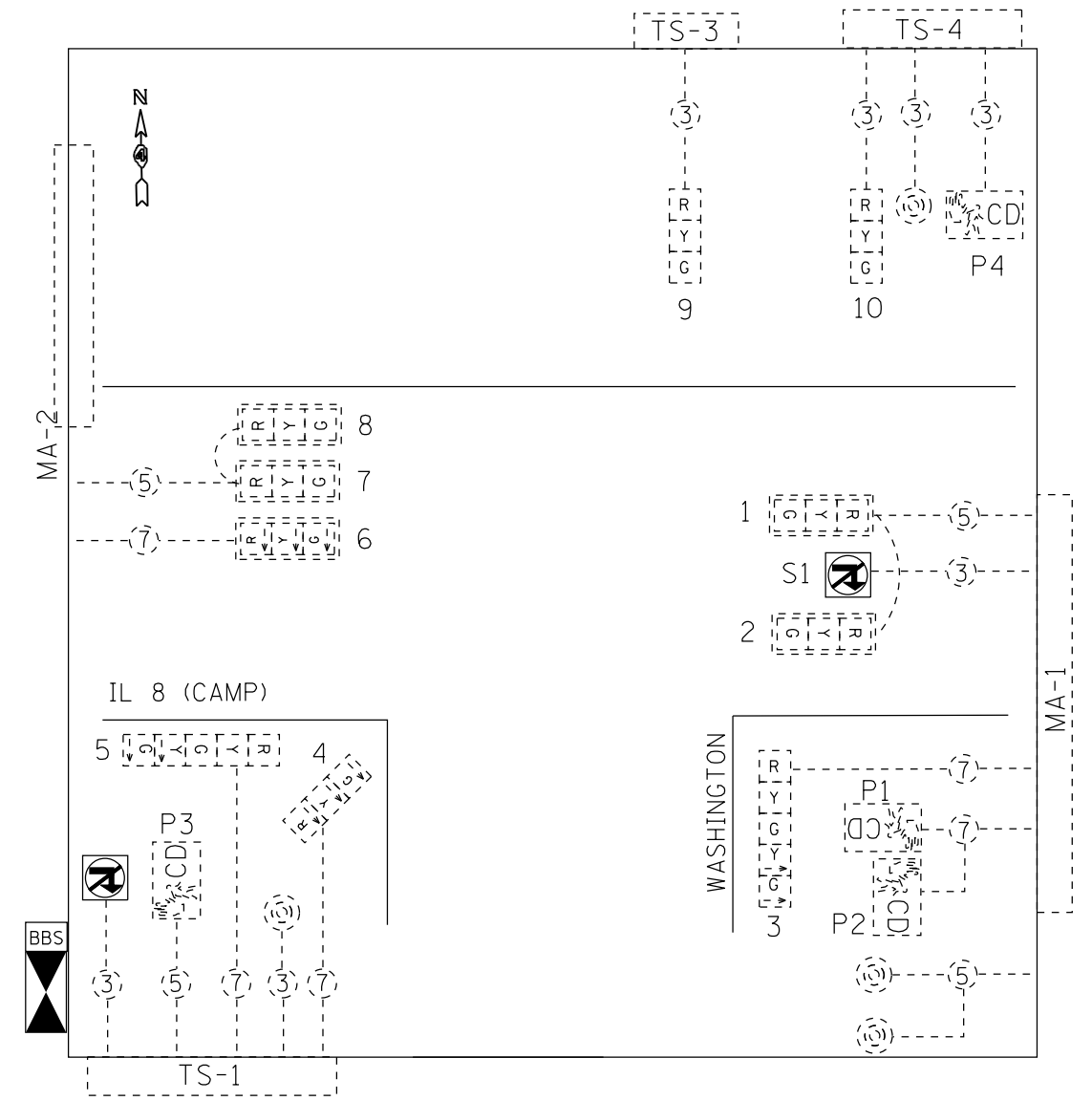
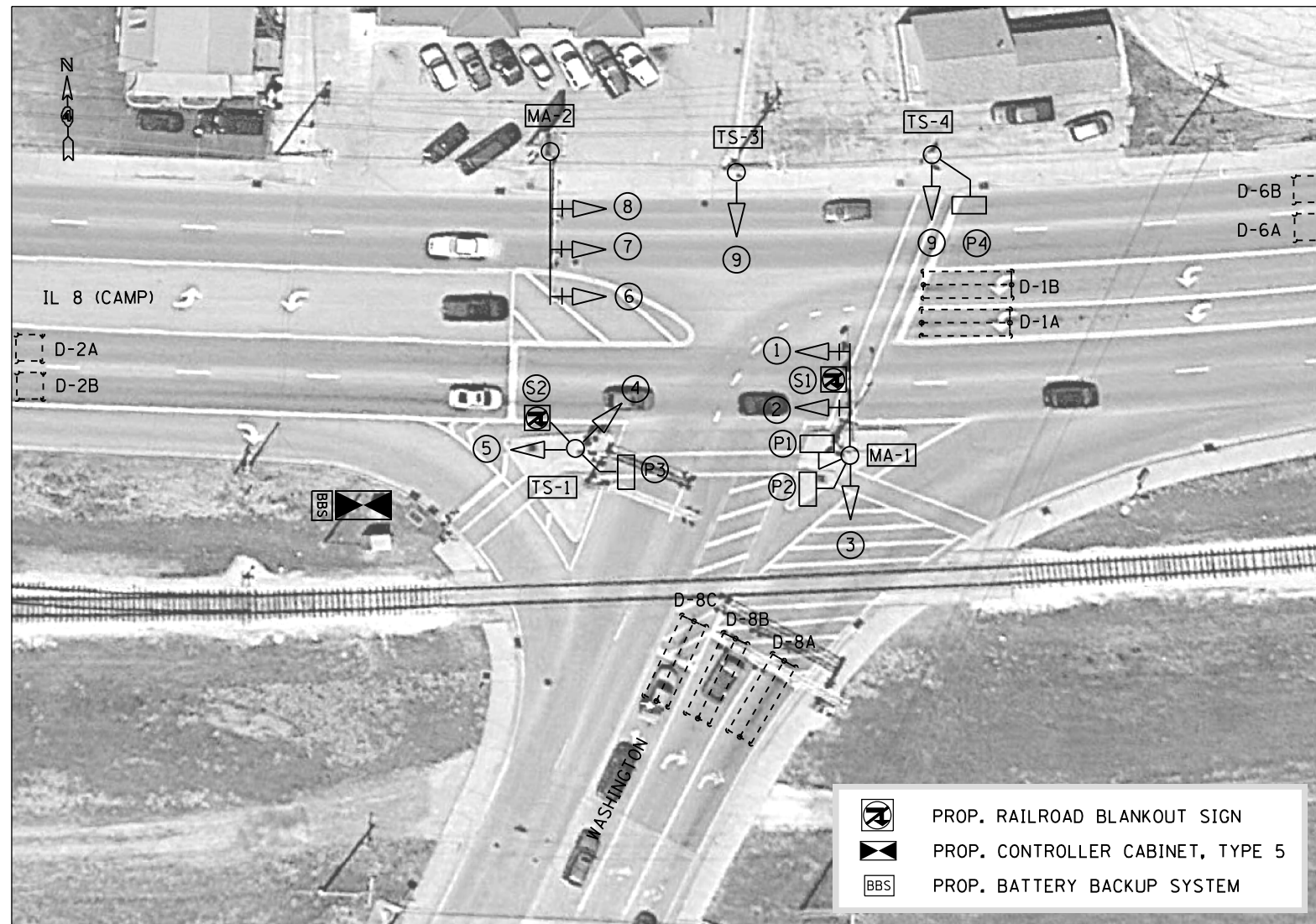
FILE NAME = 68C53 - Railroad Cabinet Project (Final)	USER NAME = aubreys	DESIGNED -	REVISED - ERH 10-31-14
	3-23-15.dgn	DRAWN -	REVISED -
	PLOT SCALE = 38.0568' / in.	CHECKED -	REVISED -
	PLOT DATE = 3/27/2015	DATE -	REVISED -

**STATE OF ILLINOIS
DEPARTMENT OF TRANSPORTATION**

**PROPOSED TRAFFIC SIGNALS
IL 116 (MAIN) & IL 8 (CAMP) - EAST PEORIA**

SCALE: _____ STA. _____ TO STA. _____

RTE. RTÉ.	SECTION	COUNTY	TOTAL SHEETS	SHEET NO.
VAR.	D4 TRAFFIC SIGNALS 2015	PEORIA-TAZEWell	14	5
CONTRACT NO. 68C53				
ILLINOIS FED. AID PROJECT				



BILL OF MATERIALS - IL 8 (CAMP) & WASHINGTON (EAST PEORIA)

ITEM DESCRIPTION	UNIT	TOTAL QTY.
RAILROAD, FULL-ACTUATED CONTROLLER AND TYPE V CABINET	EACH	1.0
INDUCTIVE LOOP DETECTOR	EACH	9.0
TRAFFIC SIGNAL BATTERY BACKUP SYSTEM	EACH	1.0
ILLUMINATED SIGN, LED	EACH	2.0

CABLE DIAGRAM

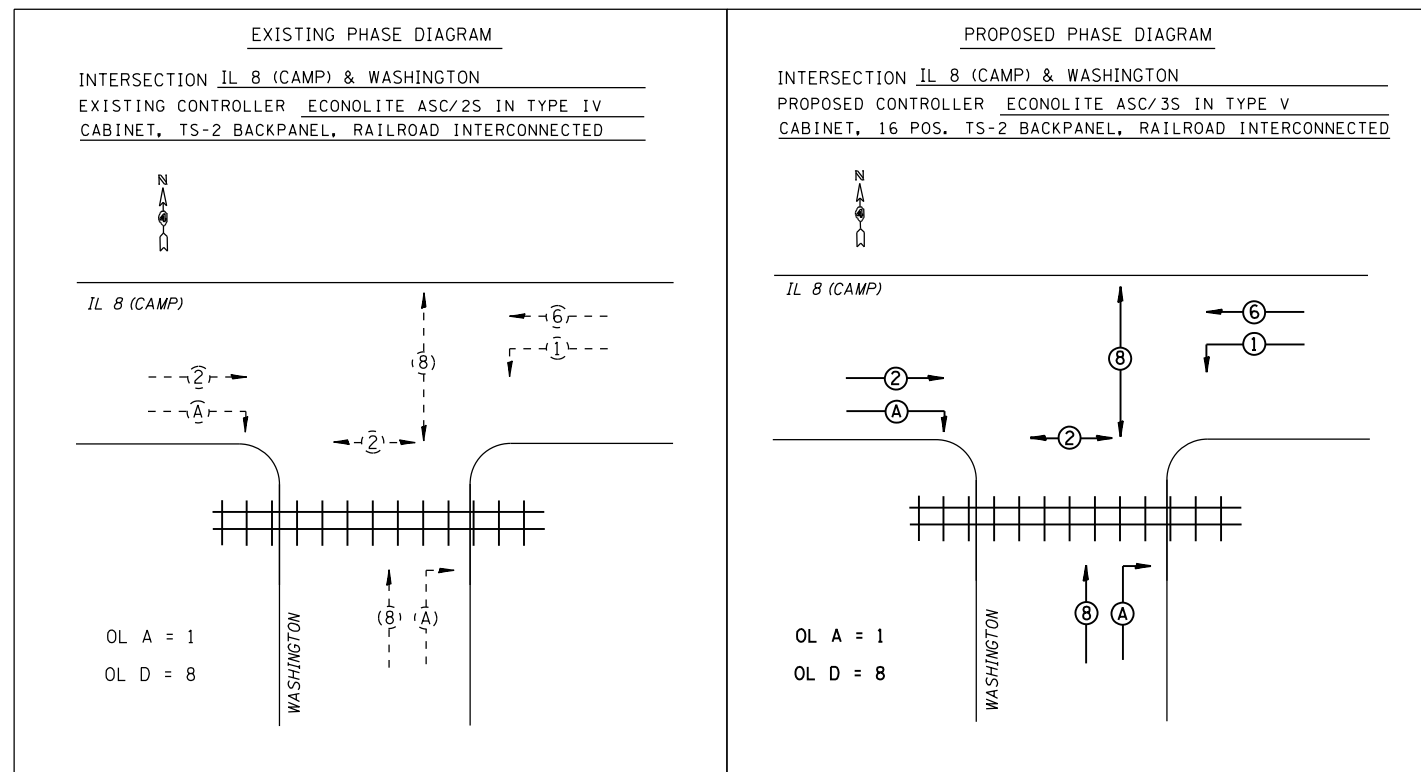
FILE NAME = 68C53 - Railroad Cabinet Project (Final) 3-23-15.dgn	USER NAME = aubreys	DESIGNED -	REVISED - ERH 10-31-14
		DRAWN -	REVISED -
	PLOT SCALE = 38.0568' / in.	CHECKED -	REVISED -
	PLOT DATE = 3/27/2015	DATE -	REVISED -

STATE OF ILLINOIS
DEPARTMENT OF TRANSPORTATION

SCALE:		STA.	TO STA.
--------	--	------	---------

PROPOSED TRAFFIC SIGNALS
IL 8 (CAMP) & WASHINGTON - EAST PEORIA

RTE. RTÉ.	SECTION	COUNTY	TOTAL SHEETS	SHEET NO.
VAR.	D4 TRAFFIC SIGNALS 2015	PEORIA-TAZEWELL	14	6
CONTRACT NO. 68C53				
ILLINOIS FED. AID PROJECT				

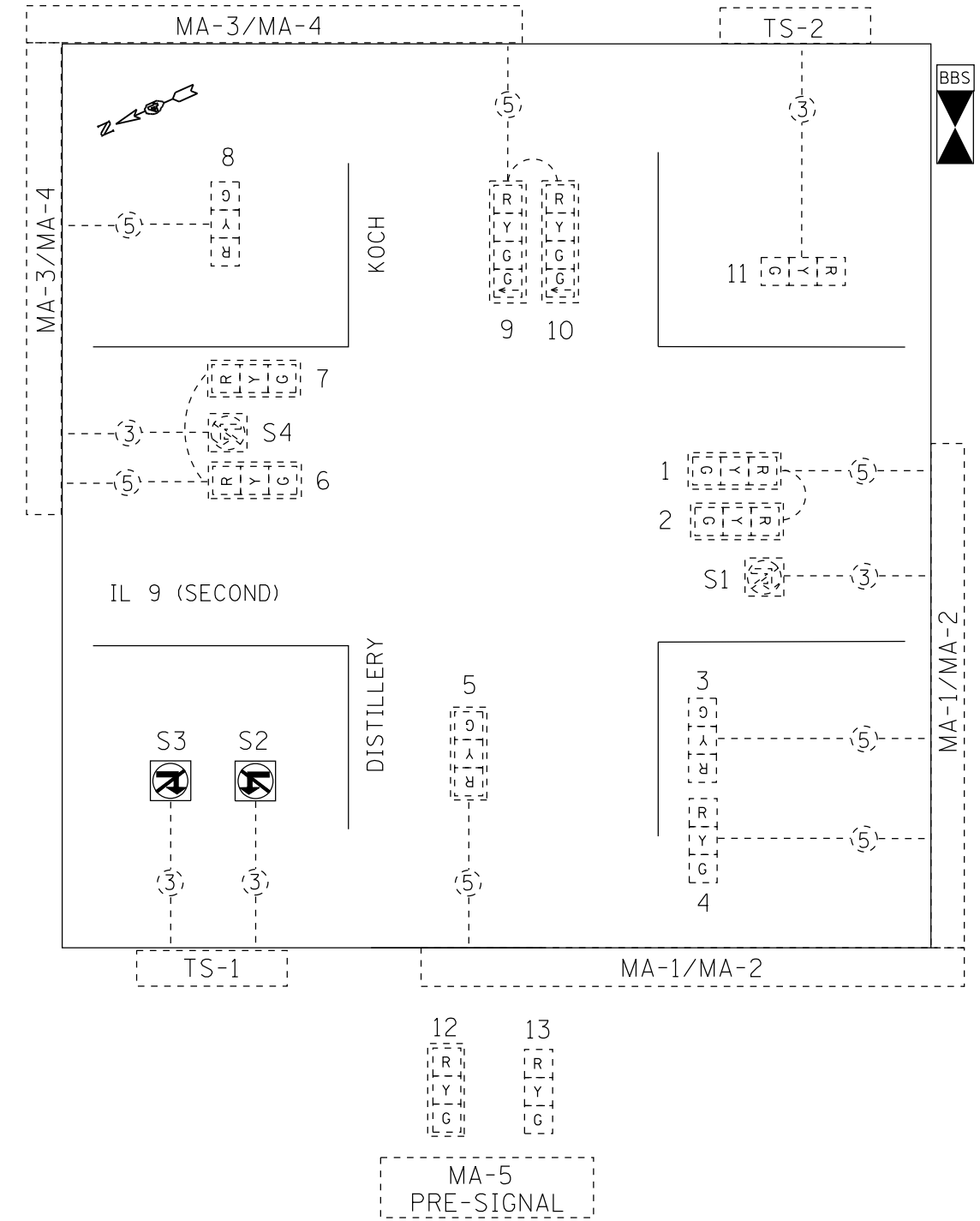


EXISTING AND PROPOSED RAILROAD PREEMPTION PARAMETERS							
PREEMPT 1 (SUPERVISORY CIRCUIT)				PREEMPT 2 (RAILROAD)			
PED CLEAR THRU YELLOW: YES				PED CLEAR THRU YELLOW: YES			
PRIORITY PREEMPTION: YES				PRIORITY PREEMPTION: YES			
HOLD FLASH: YES				HOLD FLASH: NO			
TRACK CLEAR PHASE: 8				TRACK CLEAR PHASE: 8			
TERMINATE OVERLAP: D				HOLD PHASES: 2,6			
DURATION TIME: 0				EXIT PHASES: 8			
DELAY TIME: 1				EXIT CALLS: 8			
INHIBIT TIME: 0				TERMINATE OVERLAP: D			
EXIT MAX:0				DURATION TIME: 0			
MINIMUM PED CLEAR: 4				DELAY TIME: 1			
MAX TIME: 0				INHIBIT TIME: 0			
MINIMUM HOLD TIME: 15				EXIT MAX:0			
HOLD DELAY TIME: 0				MINIMUM PED CLEAR: 4			
				MAX TIME: 0			
				MINIMUM HOLD TIME: 15			
				HOLD DELAY TIME: 0			
MINIMUM	GREEN	YELLOW	RED	MINIMUM	GREEN	YELLOW	RED
TRACK CLR	1.0	4.0	2.0	TRACK CLR	1.0	4.0	2.0

DETECTOR LOOP AND DETECTOR ASSIGNMENT SCHEDULE IL 8 (CAMP) & WASHINGTON		
DETECTOR LOOP	ASSIGNED PHASE	CHANNELS REQUIRED
D-1A, D1-B	1	2
D-2A, D2B	2	2
D-6A, D6B	6	2
D-8A, D-8B, D-8C	8	3
TOTAL:		9

PREEMPTION SEQUENCE NOTES:

1. UPON RR PREEMPTION, BLANK OUT SIGNS SHALL ILLUMINATE AND ACTIVE VEHICLE AND PEDESTRIAN PHASES SHALL TERMINATE TO PHASE 8 (TRACK CLEARANCE).
2. PEDESTRIAN CLEARANCE TIME SHALL BE LIMITED TO DISPLAYING FLASHING DON'T WALK (HAND INDICATION) THROUGH THE ASSOCIATED VEHICULAR YELLOW CLEARANCE INTERVAL ONLY.
3. AFTER THE TRACK CLEARANCE INTERVAL HAS COMPLETED, THE CONTROLLER SHALL DWELL IN PHASES 2 AND 6.
4. UPON COMPLETION OF RR PREEMPTION, BLANK OUT SIGNS SHALL TURN OFF AND THE CONTROLLER SHALL RESUME NORMAL OPERATION.



BILL OF MATERIALS - IL 9 (SECOND) & KOCH/DISTILLERY (PEKIN)

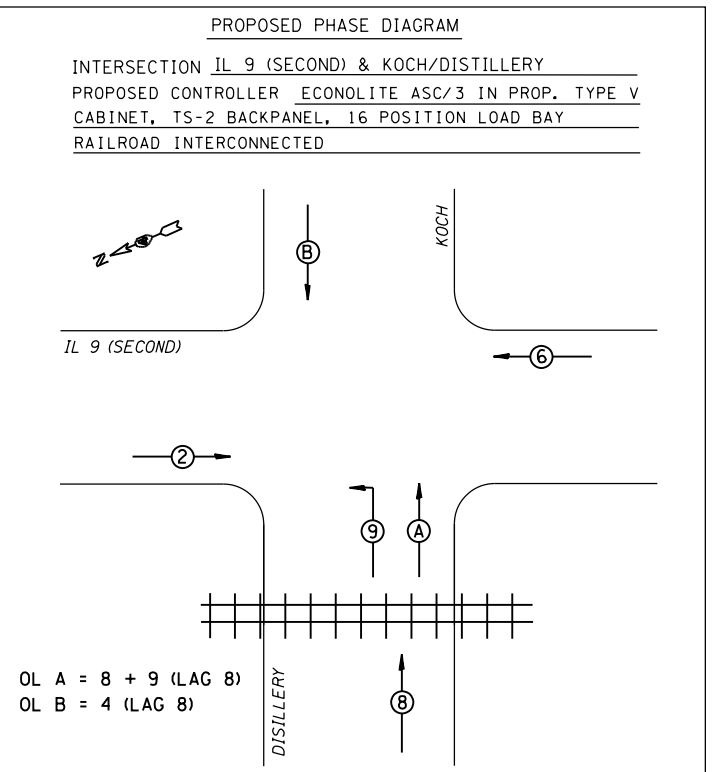
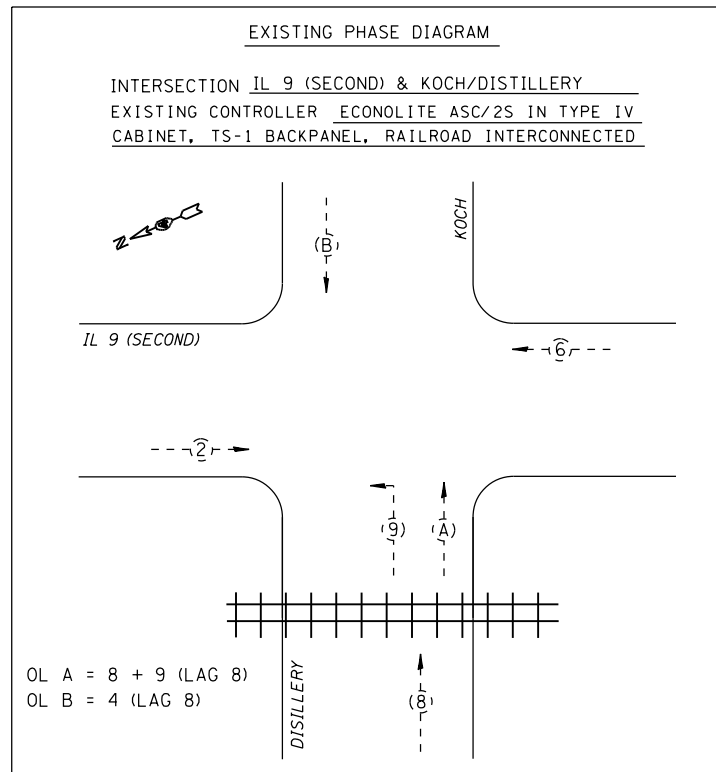
ITEM DESCRIPTION	UNIT	TOTAL QTY.
RAILROAD, FULL-ACTUATED CONTROLLER AND TYPE V CABINET	EACH	1.0
INDUCTIVE LOOP DETECTOR	EACH	4.0
TRAFFIC SIGNAL BATTERY BACKUP SYSTEM	EACH	1.0
ILLUMINATED SIGN, LED	EACH	2.0

FILE NAME = 68C53 - Railroad Cabinet Project (Final)	USER NAME = aubreys	DESIGNED - 23-15.dgn	REVISED - ERH 10-31-14
		DRAWN -	REVISED -
		PLOT SCALE = 38.0568' / in.	REVISED -
		DATE = 3/27/2015	REVISED -

**STATE OF ILLINOIS
DEPARTMENT OF TRANSPORTATION**

PROPOSED TRAFFIC SIGNALS IL 29 (SECOND) & KOCH/DISTILLERY - PEKIN		RTE. RTÉ.	SECTION	COUNTY	TOTAL SHEETS	SHEET NO.
SCALE:	STA.	TO STA.	D4 TRAFFIC SIGNALS 2015	PEORIA-TAZEWELL	14	8
				CONTRACT NO. 68C53		

ILLINOIS FED. AID PROJECT	
---------------------------	--

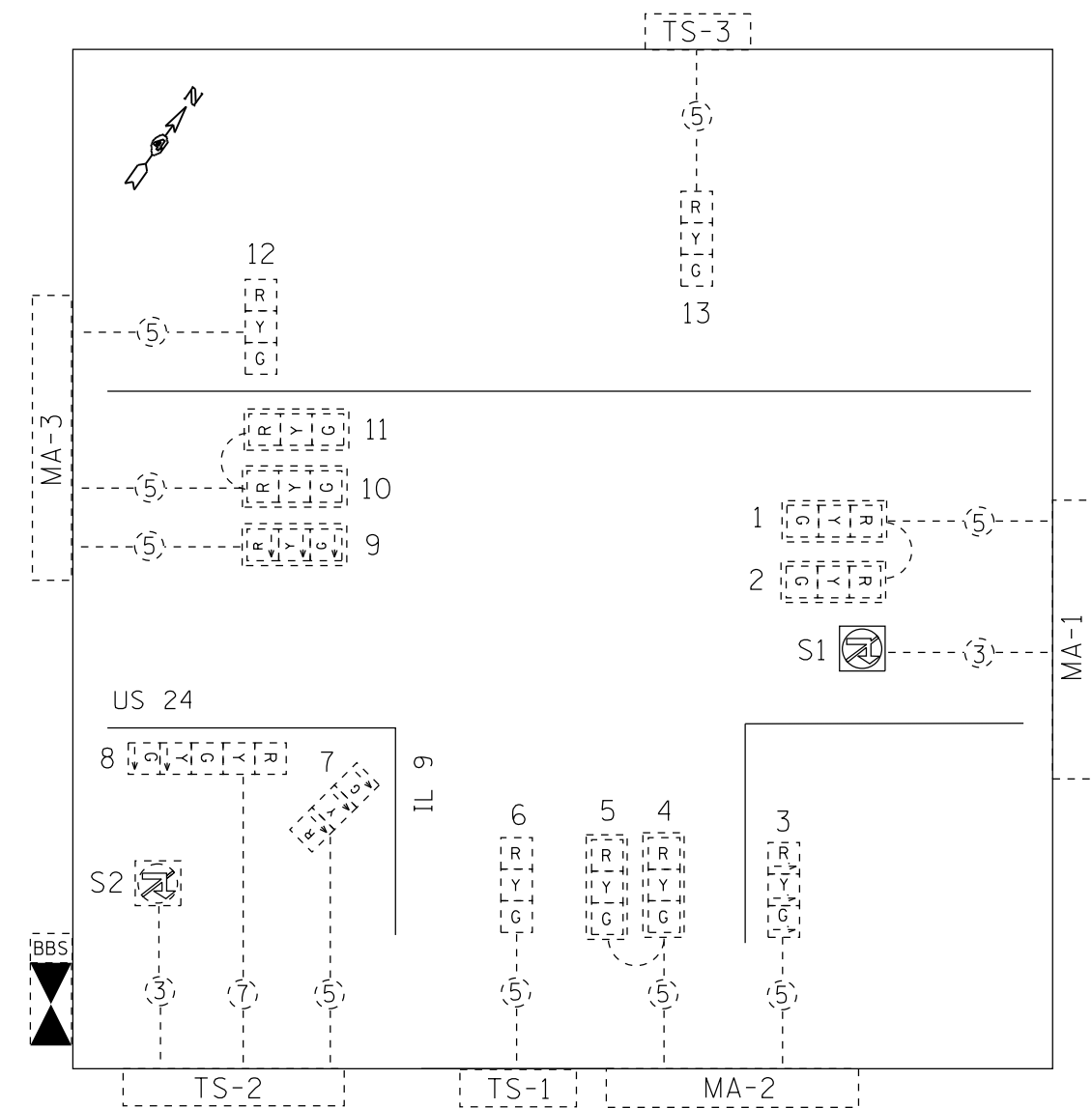


EXISTING AND PROPOSED RAILROAD PREEMPTION PARAMETERS							
PREEMPT 1 (SUPERVISORY CIRCUIT)				PREEMPT 2 (RAILROAD)			
PRIORITY PREEMPTION: YES				PRIORITY PREEMPTION: YES			
HOLD FLASH: YES				HOLD FLASH: NO			
TRACK CLEAR PHASE: 9				TRACK CLEAR PHASE: 9			
DURATION TIME: 0				HOLD PHASES: 2,6			
DELAY TIME: 1				EXIT PHASES: 4,8			
INHIBIT TIME: 0				DURATION TIME: 0			
EXIT MAX:0				DELAY TIME: 1			
MAX TIME: 0				INHIBIT TIME: 0			
MINIMUM HOLD TIME: 15				EXIT MAX:0			
HOLD DELAY TIME: 10				MAX TIME: 0			
				MINIMUM HOLD TIME: 15			
				HOLD DELAY TIME: 10			
MINIMUM	GREEN	YELLOW	RED	MINIMUM	GREEN	YELLOW	RED
	1.0	4.0	2.0		1.0	4.0	2.0
TRACK CLR	17.0	4.0	2.0	TRACK CLR	17.0	4.0	2.0

DETECTOR LOOP AND DETECTOR ASSIGNMENT SCHEDULE IL 9 (SECOND) & KOCH/DISTILLERY		
DETECTOR LOOP	ASSIGNED PHASE	CHANNELS REQUIRED
D-2	2	1
D-4	4	1
D-6	6	1
D-8	8	1
TOTAL:		4

PREEMPTION SEQUENCE NOTES:

1. UPON RR PREEMPTION, BLANK OUT SIGNS SHALL ILLUMINATE AND ACTIVE VEHICLE PHASES SHALL TERMINATE TO PHASE 8 (TRACK CLEARANCE).
2. AFTER THE TRACK CLEARANCE INTERVAL HAS COMPLETED, THE CONTROLLER SHALL DWELL IN PHASES 2 AND 6.
3. UPON COMPLETION OF RR PREEMPTION, BLANK OUT SIGNS SHALL TURN OFF AND THE CONTROLLER SHALL RESUME NORMAL OPERATION.



BILL OF MATERIALS - US 24 & IL 9 (ORCHARD MINES)

ITEM DESCRIPTION	UNIT	TOTAL QTY.
MODIFY EXISTING CONTROLLER CABINET	EACH	1.0

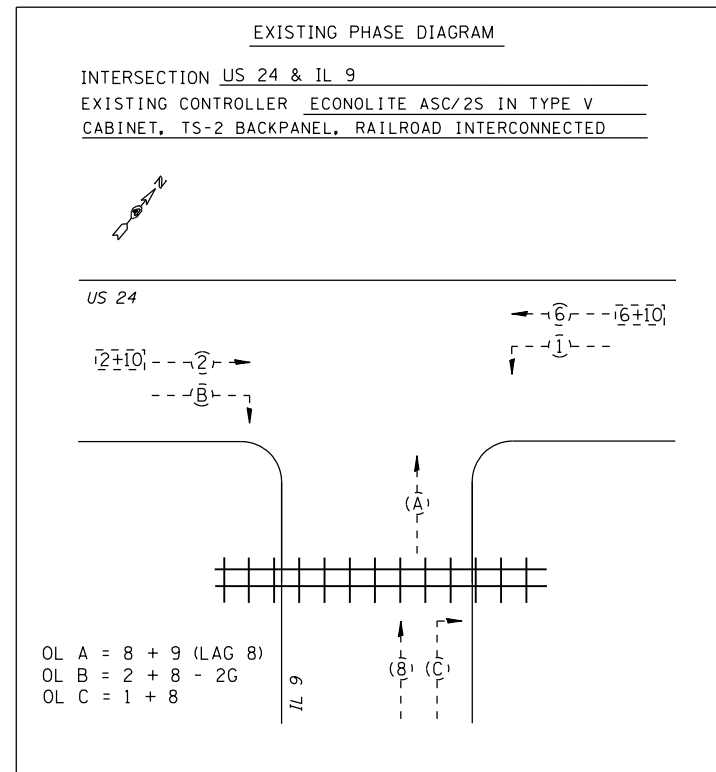
FILE NAME = 68C53 - Railroad Cabinet Project (Final) 3-23-15.dgn	USER NAME = aubreys	DESIGNED -	REVISED - ERH 10-31-14
	PLOT SCALE = 38.0568' / in.	DRAWN -	REVISED -
	PLOT DATE = 3/27/2015	CHECKED -	REVISED -
		DATE -	REVISED -

**STATE OF ILLINOIS
DEPARTMENT OF TRANSPORTATION**

**PROPOSED TRAFFIC SIGNALS
US 24 & IL 9 - ORCHARD MINES**

SCALE: STA. TO STA.

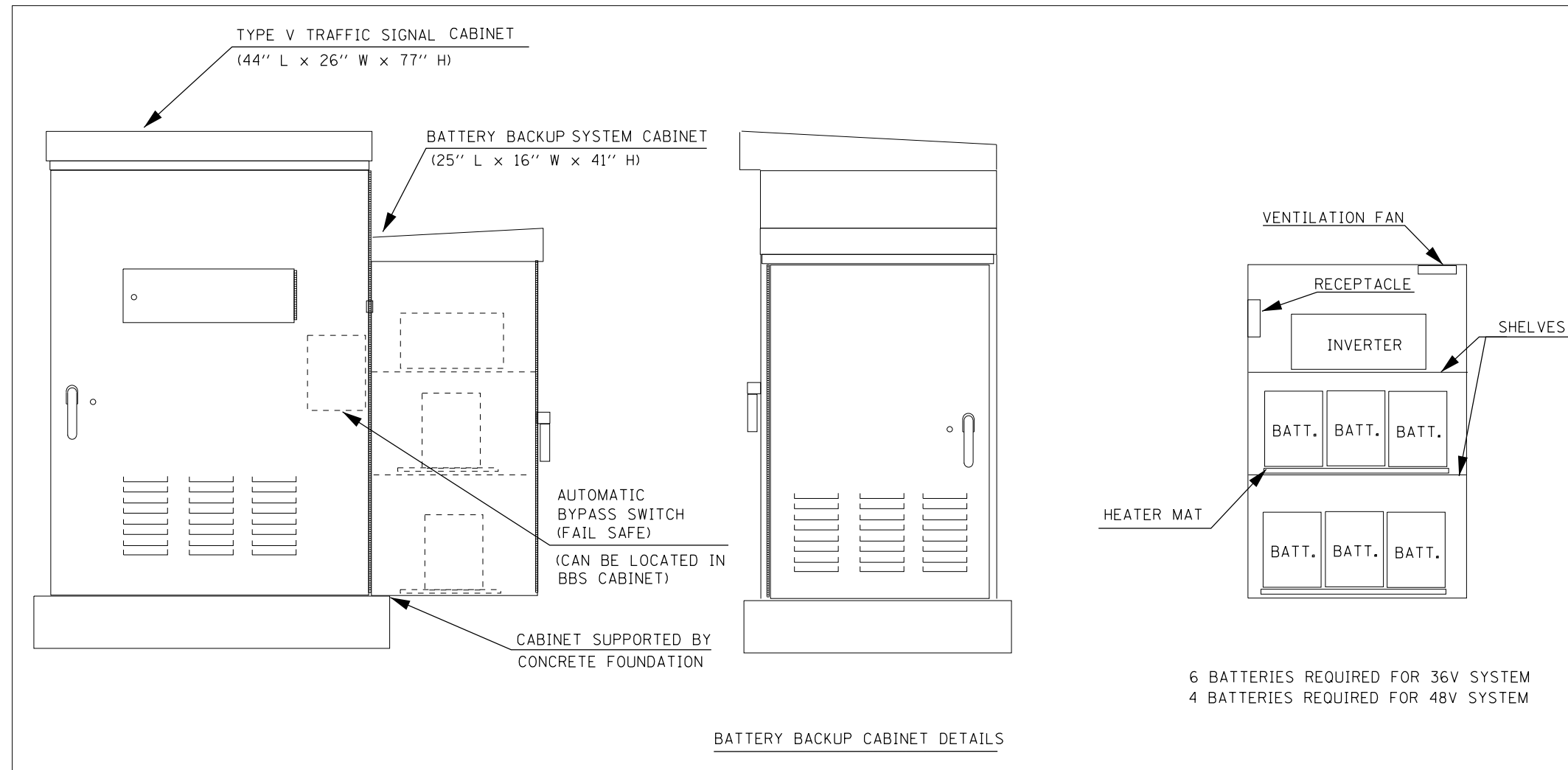
RTE. RTÉ.	SECTION	COUNTY	TOTAL SHEETS	SHEET NO.
VAR.	D4 TRAFFIC SIGNALS 2015	PEORIA-TAZEWELL	14	10
CONTRACT NO. 68C53				
ILLINOIS FED. AID PROJECT				



EXISTING AND PROPOSED RAILROAD PREEMPTION PARAMETERS							
PREEMPT 1 (SUPERVISORY CIRCUIT)				PREEMPT 2 (RAILROAD)			
PRIORITY PREEMPTION: YES				PRIORITY PREEMPTION: YES			
HOLD FLASH: YES				HOLD FLASH: NO			
TRACK CLEAR PHASE: 9				TRACK CLEAR PHASE: 9			
DURATION TIME: 0				HOLD PHASES: 10			
DELAY TIME: 1				EXIT PHASES: 8			
INHIBIT TIME: 0				EXIT CALLS: 1			
EXIT MAX: 0				DURATION TIME: 0			
MAX TIME: 0				DELAY TIME: 1			
MINIMUM HOLD TIME: 15				INHIBIT TIME: 0			
HOLD DELAY TIME: 0				EXIT MAX: 0			
				MAX TIME: 0			
				MINIMUM HOLD TIME: 15			
				HOLD DELAY TIME: 0			
MINIMUM	GREEN	YELLOW	RED	MINIMUM	GREEN	YELLOW	RED
TRACK CLR	12.0	4.5	2.0	TRACK CLR	12.0	4.5	2.0

PREEMPTION SEQUENCE NOTES:

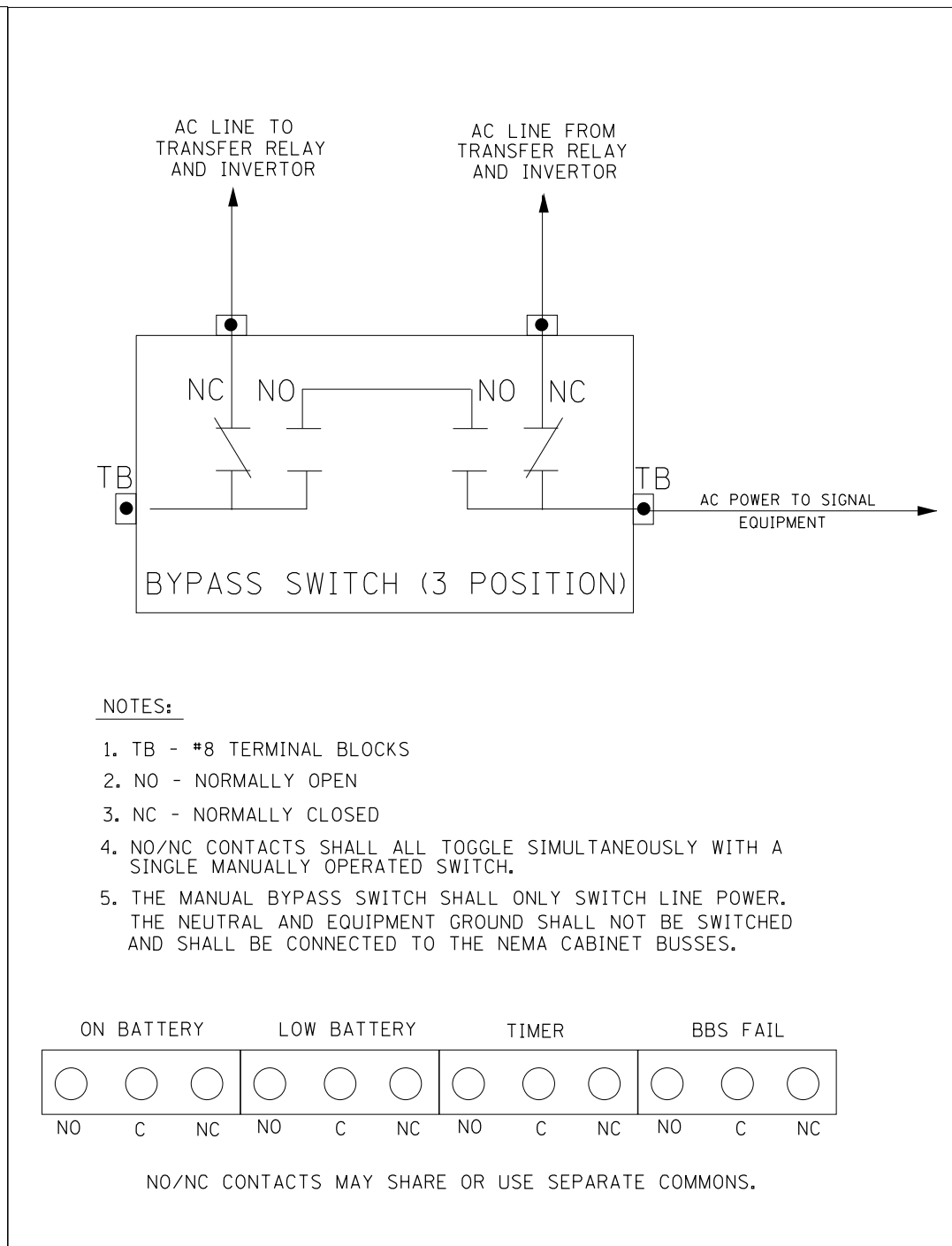
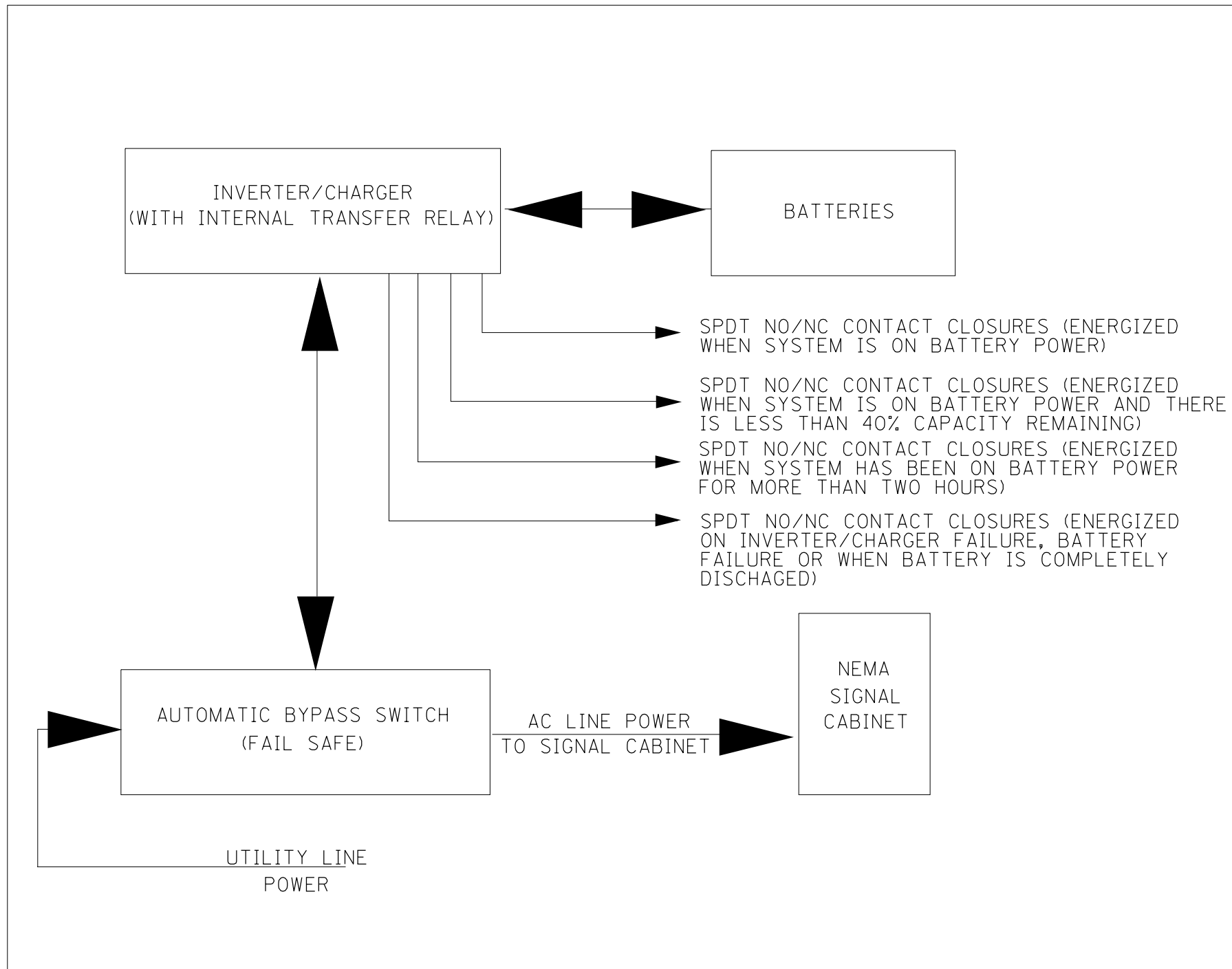
1. UPON RR PREEMPTION, BLANK OUT SIGNS SHALL ILLUMINATE AND ACTIVE VEHICLE PHASES SHALL TERMINATE TO PHASE 8 (TRACK CLEARANCE).
2. AFTER THE TRACK CLEARANCE INTERVAL HAS COMPLETED, THE CONTROLLER SHALL DWELL IN PHASES 2 AND 6.
3. UPON COMPLETION OF RR PREEMPTION, BLANK OUT SIGNS SHALL TURN OFF AND THE CONTROLLER SHALL RESUME NORMAL OPERATION.
4. THE CONTRACTOR SHALL MODIFY THE EXISTING TRAFFIC SIGNAL CABINET BY INSTALLING A RAILROAD PREEMPTION INTERLOCK RELAY. THE RELAY SHALL BE INSTALLED BY THE MANUFACTURER OF THE EXISTING TRAFFIC SIGNAL CABINET.



NOTES

1. THE BATTERY BACKUP SYSTEM CABINET SHALL BE A NEMA TYPE 3R CABINET WITH MINIMUM OUTSIDE DIMENSIONS OF 41" (H) X 25" (W) X 16" (D). THE CABINET SHALL BE EQUIPPED WITH A THREE POINT LATCHING MECHANISM, TWO SHELVES, THERMOSTATICALLY CONTROLLED VENTILATION FAN, AND A POWER RECEPTACLE. THE CABINET SHALL BE MOUNTED TO THE SIDE OF THE PROPOSED TYPE IV CABINET WITH THE BOTTOM OF THE CABINET SUPPORTED BY THE CONCRETE FOUNDATION.
2. ALL CABINET LIGHTS, HEATER STRIPS, VENTILATION FANS, AND SERVICE RECEPTACLES SHALL BE BYPASSED WHEN THE BATTERY BACKUP UNIT IS OPERATING IN BATTERY MODE.
3. THE BATTERY BACKUP UNITS CONTACTS SHALL BE WIRED TO PROVIDE LOCAL CONTROLLER ALARMS (AS AVAILABLE IN THE SIGNAL CABINETS).

FILE NAME =	USER NAME = aubreys	DESIGNED -	REVISED -	STATE OF ILLINOIS DEPARTMENT OF TRANSPORTATION	BATTERY BACKUP SYSTEM CABINET DETAIL	RTE.	SECTION	COUNTY	TOTAL SHEETS	SHEET NO.	
68C53 - Railroad Cabinet Project (Final	3-23-15.dgn	DRAWN -	REVISED -			VAR.	D4 TRAFFIC SIGNALS 2015	PEORIA-TAZEWELL	14	12	
	PLOT SCALE = 38.0588 ' / in.	CHECKED -	REVISED -			CONTRACT NO. 68C53					
	PLOT DATE = 3/27/2015	DATE -	REVISED -			ILLINOIS FED. AID PROJECT					



FILE NAME =	USER NAME = aubreys	DESIGNED -	REVISED -
68C53 - Railroad Cabinet Project (Final 3-23-15).dgn		DRAWN -	REVISED -
	PLOT SCALE = 38.0588' / in.	CHECKED -	REVISED -
	PLOT DATE = 3/27/2015	DATE -	REVISED -

**STATE OF ILLINOIS
DEPARTMENT OF TRANSPORTATION**

BATTERY BACKUP SYSTEM BLOCK AND BYPASS SWITCH DIAGRAMS

SCALE: _____ STA. _____ TO STA. _____

RTE. RTÉ.	SECTION	COUNTY	TOTAL SHEETS	SHEET NO.
VAR.	D4 TRAFFIC SIGNALS 2015	PEORIA-TAZEWELL	14	14
CONTRACT NO. 68C53			ILLINOIS FED. AID PROJECT	