

STATE OF ILLINOIS
DEPARTMENT OF TRANSPORTATION
DIVISION OF HIGHWAYS

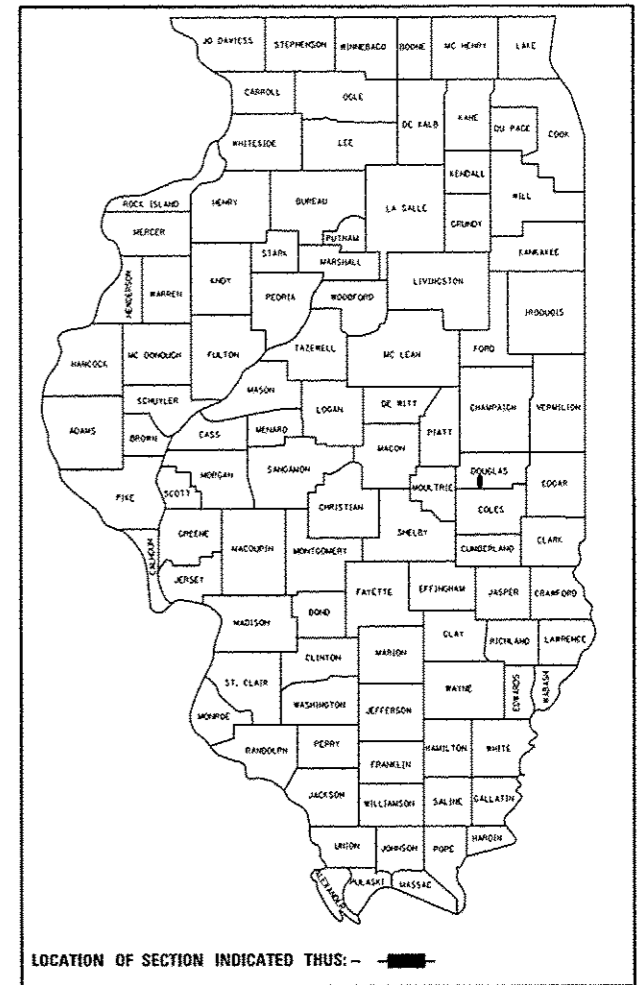
**PROPOSED
HIGHWAY PLANS**

F.A.I. ROUTE 57 (I-57)
SECTION D5 LIGHTING CM 2015-1
INTERCHANGE LIGHTING MODERNIZATION
DOUGLAS COUNTY

C-95-033-14

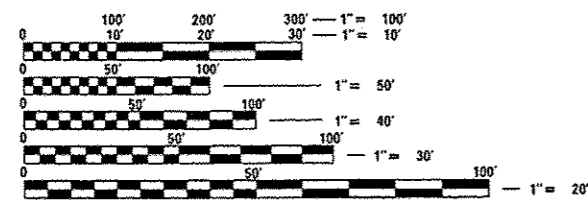
F.A.I. RTE.	SECTION	COUNTY	TOTAL SHEETS	SHEET NO.
57	D5 LIGHTING CM 2015-1	DOUGLAS	7	1
		ILLINOIS	CONTRACT NO. 70A78	

D-95-033-14



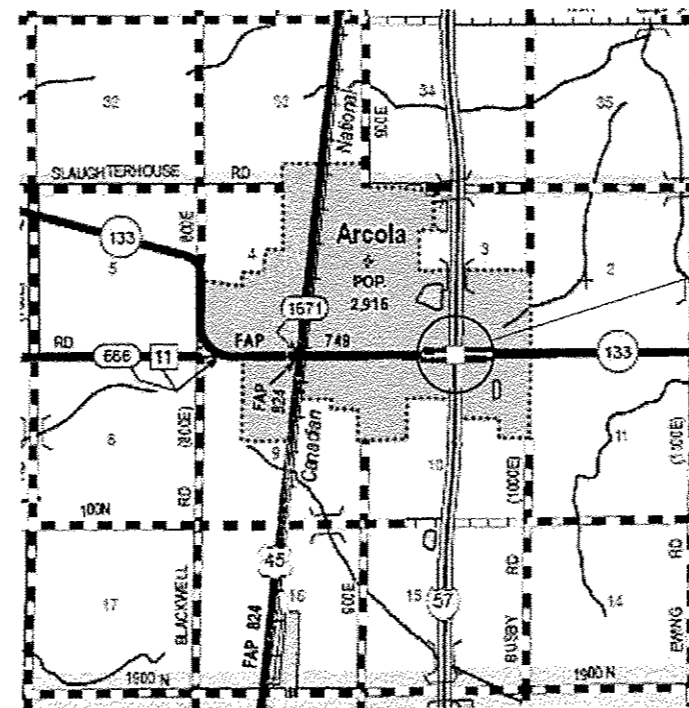
LOCATION OF SECTION INDICATED THUS: - [black rectangle] -

FOR INDEX OF SHEETS, SEE SHEET NO. 2



FULL SIZE PLANS HAVE BEEN PREPARED USING STANDARD ENGINEERING SCALES. REDUCED SIZED PLANS WILL NOT CONFORM TO STANDARD SCALES. IN MAKING MEASUREMENTS ON REDUCED PLANS, THE ABOVE SCALES MAY BE USED.

J.U.L.I.E.
JOINT UTILITY LOCATION INFORMATION FOR EXCAVATION
1-800-892-0123
OR 811



I-57 & IL 133
INTERCHANGE LIGHTING MODERNIZATION

CITY OF ARCOLA

STATE OF ILLINOIS
DEPARTMENT OF TRANSPORTATION
DIVISION OF HIGHWAYS

SUBMITTED January 15, 2015

[Signature]
DEPUTY DIRECTOR OF HIGHWAYS, REGION ENGINEER

May 8, 2015
[Signature] P.E./a
ENGINEER OF DESIGN AND ENVIRONMENT

May 8, 2015
[Signature] P.E./a
DIRECTOR OF HIGHWAYS, CHIEF ENGINEER

**PRINTED BY THE AUTHORITY
OF THE STATE OF ILLINOIS**

PROJECT ENGINEER: JEFF ALLEN
PROJECT MANAGER: ROGER BIGGS

CONTRACT NO. 70A78

GENERAL LIGHTING NOTES

1. CONTRACTOR SHALL INSTALL LIGHT POLES AT THE LOCATIONS INDICATED ON THE PLANS, MAINTAINING ADEQUATE CLEARANCE FROM OVERHEAD UTILITY LINES. CONTRACTOR SHALL BE RESPONSIBLE TO VERIFY CLEARANCES PER THE NATIONAL ELECTRICAL SAFETY CODE AND/OR THE REQUIREMENTS OF THE UTILITY COMPANIES. THE CONTRACTOR SHALL NOTIFY THE ENGINEER OF ALL CONFLICTS BETWEEN PROPOSED LIGHT POLE LOCATIONS AND UTILITY LINES. THE LOCATION OF BURIED AND ABOVE GROUND UTILITIES SHOWN ARE APPROXIMATE AND ARE SHOWN FOR INFORMATION ONLY. REROUTING, DISCONNECTION, RELOCATION, PROTECTION ETC., OF ANY UTILITIES MUST BE COORDINATED BETWEEN THE CONTRACTOR, UTILITY COMPANY, AND OWNER. THE CONTRACTOR SHALL VERIFY THE EXACT LOCATION OF ALL UNDERGROUND UTILITIES PRIOR TO CONSTRUCTION.
2. THE CONTRACTOR IS RESPONSIBLE FOR UNCOVERING OR HAND DIGGING AROUND UTILITIES AS NECESSARY. THE COST OF THIS WORK IS TO BE INCLUDED WITH THE APPLICABLE UNDERGROUND CONDUIT OR UNIT DUCT PAY ITEM.
3. PROPOSED LIGHT POLES TO BE INSTALLED AT A 30 FEET SETBACK FROM THE EDGE OF TRAVELED PAVEMENT OR 5 FEET BEHIND THE GUARDRAIL UNLESS NOTED OTHERWISE ON THE PLANS. NO POLES TO BE INSTALLED IN THE FLOWLINE OF DITCH. POLE SETBACK TO BE INCREASED IF NECESSARY AS DIRECTED BY THE ENGINEER.
4. UNDERGROUND COILABLE NON-METALLIC CONDUIT SHALL BE SCHEDULE 80.
5. STAINLESS STEEL SCREEN INSTALLED AROUND BREAKAWAY COUPLINGS OR ANCHOR RODS AND NUTS SHALL BE ACCORDING TO ARTICLE 1070.04(a)(2)c OF THE STANDARD SPECIFICATIONS EXCEPT THE MINIMUM WIRE DIAMETER SHALL BE AWG NO. 16 (1.6 mm).
6. BREAKAWAY DEVICES SHALL NOT BE INSTALLED FOR POLES LOCATED BEHIND THE GUARDRAIL.
7. PROPOSED UNIT DUCT SHALL BE SCHEDULE 40.
8. REMOVE AND SURPLUS MATERAIL INCLUDING SOIL SHALL BECOME PROPERTY OF CONTRACTOR AND BE REMOVED FROM SITE ACCORDING TO ART. 202.03.

HIGHWAY STANDARDS

701006-05	OFF ROAD OPERATION - 2 LANE 2 WAY LESS THAN 15 FT TO EOP
701101-04	OFF ROAD OPERATION - MULTILANE - LESS THAN 15 FT TO EOP
701301-04	LANE CLOSURE - 2 LANE 2 WAY - SHORT TIME OPERATION
701456-03	PARTIAL EXIT RAMP CLOSURE - FREEWAY / EXPRESSWAY
701901-04	TRAFFIC CONTROL DEVICES
821101-01	LUMINAIRE WIRING DIAGRAM
825011-03	LIGHTING CONTROLLER, PEDESTAL MOUNTED, 240V
830021-02	LIGHT POLE STEEL TENON TOP
836001-02	LIGHT POLE FOUNDATION
838001	BREAKAWAY DEVICES

LIGHTING SCHEDULE OF QUANTITIES

<p>REMOVAL OF LIGHTING UNIT, NO SALVAGE REMOVAL OF POLE FOUNDATION</p> <table border="0"> <tr> <th>LOCATION</th> <th>EACH</th> </tr> <tr> <td>STA. 40+34 LT.</td> <td style="text-align: right;">1</td> </tr> <tr> <td>STA. 59+72 RT.</td> <td style="text-align: right;">1</td> </tr> <tr> <td style="text-align: right;">TOTAL</td> <td style="text-align: right;">2 EACH</td> </tr> </table> <p>REMOVAL OF LIGHT TOWER, NO SALVAGE REMOVAL OF TOWER FOUNDATION</p> <table border="0"> <tr> <th>LOCATION</th> <th>EACH</th> </tr> <tr> <td>STA. 379+27 RT.</td> <td style="text-align: right;">1</td> </tr> <tr> <td>STA. 113+51 RT.</td> <td style="text-align: right;">1</td> </tr> <tr> <td>STA. 43+58 LT.</td> <td style="text-align: right;">1</td> </tr> <tr> <td>STA. 56+31 RT.</td> <td style="text-align: right;">1</td> </tr> <tr> <td style="text-align: right;">TOTAL</td> <td style="text-align: right;">4 EACH</td> </tr> </table> <p>REMOVAL OF LIGHTING CONTROLLER REMOVAL OF LIGHTING CONTR. FND.</p> <table border="0"> <tr> <th>LOCATION</th> <th>EACH</th> </tr> <tr> <td>STA. 58+11 RT.</td> <td style="text-align: right;">1</td> </tr> </table>	LOCATION	EACH	STA. 40+34 LT.	1	STA. 59+72 RT.	1	TOTAL	2 EACH	LOCATION	EACH	STA. 379+27 RT.	1	STA. 113+51 RT.	1	STA. 43+58 LT.	1	STA. 56+31 RT.	1	TOTAL	4 EACH	LOCATION	EACH	STA. 58+11 RT.	1	<p>LIGHT POLE, GS, 45 FT. M.H., TENON MT-TWIN</p> <table border="0"> <tr> <th>LOCATION</th> <th>EACH</th> </tr> <tr> <td>STA. 43+50 LT.</td> <td style="text-align: right;">1</td> </tr> <tr> <td>STA. 56+50 RT.</td> <td style="text-align: right;">1</td> </tr> <tr> <td style="text-align: right;">TOTAL</td> <td style="text-align: right;">2 EACH</td> </tr> </table> <p>LIGHT POLE, GS, 45 FT. M.H., TENON MT</p> <table border="0"> <tr> <th>LOCATION</th> <th>EACH</th> </tr> <tr> <td>STA. 376+60 RT.</td> <td style="text-align: right;">1</td> </tr> <tr> <td>STA. 378+50 RT.</td> <td style="text-align: right;">1</td> </tr> <tr> <td>STA. 380+40 RT.</td> <td style="text-align: right;">1</td> </tr> <tr> <td>STA. 382+30 RT.</td> <td style="text-align: right;">1</td> </tr> <tr> <td>STA. 116+80 LT.</td> <td style="text-align: right;">1</td> </tr> <tr> <td>STA. 114+90 LT.</td> <td style="text-align: right;">1</td> </tr> <tr> <td>STA. 113+00 LT.</td> <td style="text-align: right;">1</td> </tr> <tr> <td>STA. 111+10 LT.</td> <td style="text-align: right;">1</td> </tr> <tr> <td>STA. 40+25 LT.</td> <td style="text-align: right;">1</td> </tr> <tr> <td>STA. 42+35 LT.</td> <td style="text-align: right;">1</td> </tr> <tr> <td>STA. 44+40 LT.</td> <td style="text-align: right;">1</td> </tr> <tr> <td>STA. 46+60 LT. / RT.</td> <td style="text-align: right;">2</td> </tr> <tr> <td>STA. 48+80 LT. / RT.</td> <td style="text-align: right;">2</td> </tr> <tr> <td>STA. 51+15 LT. / RT.</td> <td style="text-align: right;">2</td> </tr> <tr> <td>STA. 53+35 LT. / RT.</td> <td style="text-align: right;">2</td> </tr> <tr> <td>STA. 55+55 LT.</td> <td style="text-align: right;">1</td> </tr> <tr> <td>STA. 57+70 LT.</td> <td style="text-align: right;">1</td> </tr> <tr> <td>STA. 59+80 LT.</td> <td style="text-align: right;">1</td> </tr> <tr> <td style="text-align: right;">TOTAL</td> <td style="text-align: right;">22 EACH</td> </tr> </table>	LOCATION	EACH	STA. 43+50 LT.	1	STA. 56+50 RT.	1	TOTAL	2 EACH	LOCATION	EACH	STA. 376+60 RT.	1	STA. 378+50 RT.	1	STA. 380+40 RT.	1	STA. 382+30 RT.	1	STA. 116+80 LT.	1	STA. 114+90 LT.	1	STA. 113+00 LT.	1	STA. 111+10 LT.	1	STA. 40+25 LT.	1	STA. 42+35 LT.	1	STA. 44+40 LT.	1	STA. 46+60 LT. / RT.	2	STA. 48+80 LT. / RT.	2	STA. 51+15 LT. / RT.	2	STA. 53+35 LT. / RT.	2	STA. 55+55 LT.	1	STA. 57+70 LT.	1	STA. 59+80 LT.	1	TOTAL	22 EACH	<p>LIGHT POLE FOUNDATION, 30" DIA.</p> <table border="0"> <tr> <th>LOCATION</th> <th>FOOT</th> </tr> <tr> <td>STA. 376+60 RT.</td> <td style="text-align: right;">6.5</td> </tr> <tr> <td>STA. 378+50 RT.</td> <td style="text-align: right;">6.5</td> </tr> <tr> <td>STA. 380+40 RT.</td> <td style="text-align: right;">6.5</td> </tr> <tr> <td>STA. 382+30 RT.</td> <td style="text-align: right;">6.5</td> </tr> <tr> <td>STA. 116+80 LT.</td> <td style="text-align: right;">6.5</td> </tr> <tr> <td>STA. 114+90 LT.</td> <td style="text-align: right;">6.5</td> </tr> <tr> <td>STA. 113+00 LT.</td> <td style="text-align: right;">6.5</td> </tr> <tr> <td>STA. 111+10 LT.</td> <td style="text-align: right;">6.5</td> </tr> <tr> <td>STA. 40+25 LT.</td> <td style="text-align: right;">6.5</td> </tr> <tr> <td>STA. 42+35 LT.</td> <td style="text-align: right;">6.5</td> </tr> <tr> <td>STA. 43+50 LT.</td> <td style="text-align: right;">6.5</td> </tr> <tr> <td>STA. 44+40 LT.</td> <td style="text-align: right;">6.5</td> </tr> <tr> <td>STA. 46+60 LT.</td> <td style="text-align: right;">6.5</td> </tr> <tr> <td>STA. 46+60 RT.</td> <td style="text-align: right;">6.5</td> </tr> <tr> <td>STA. 48+80 LT.</td> <td style="text-align: right;">6.5</td> </tr> <tr> <td>STA. 48+80 RT.</td> <td style="text-align: right;">6.5</td> </tr> <tr> <td>STA. 51+15 LT.</td> <td style="text-align: right;">6.5</td> </tr> <tr> <td>STA. 51+15 RT.</td> <td style="text-align: right;">6.5</td> </tr> <tr> <td>STA. 53+35 LT.</td> <td style="text-align: right;">6.5</td> </tr> <tr> <td>STA. 53+35 RT.</td> <td style="text-align: right;">6.5</td> </tr> <tr> <td>STA. 55+55 LT.</td> <td style="text-align: right;">6.5</td> </tr> <tr> <td>STA. 56+50 RT.</td> <td style="text-align: right;">6.5</td> </tr> <tr> <td>STA. 57+70 LT.</td> <td style="text-align: right;">6.5</td> </tr> <tr> <td>STA. 59+80 LT.</td> <td style="text-align: right;">6.5</td> </tr> <tr> <td style="text-align: right;">Total =</td> <td style="text-align: right;">156 FOOT</td> </tr> </table>	LOCATION	FOOT	STA. 376+60 RT.	6.5	STA. 378+50 RT.	6.5	STA. 380+40 RT.	6.5	STA. 382+30 RT.	6.5	STA. 116+80 LT.	6.5	STA. 114+90 LT.	6.5	STA. 113+00 LT.	6.5	STA. 111+10 LT.	6.5	STA. 40+25 LT.	6.5	STA. 42+35 LT.	6.5	STA. 43+50 LT.	6.5	STA. 44+40 LT.	6.5	STA. 46+60 LT.	6.5	STA. 46+60 RT.	6.5	STA. 48+80 LT.	6.5	STA. 48+80 RT.	6.5	STA. 51+15 LT.	6.5	STA. 51+15 RT.	6.5	STA. 53+35 LT.	6.5	STA. 53+35 RT.	6.5	STA. 55+55 LT.	6.5	STA. 56+50 RT.	6.5	STA. 57+70 LT.	6.5	STA. 59+80 LT.	6.5	Total =	156 FOOT
LOCATION	EACH																																																																																																																													
STA. 40+34 LT.	1																																																																																																																													
STA. 59+72 RT.	1																																																																																																																													
TOTAL	2 EACH																																																																																																																													
LOCATION	EACH																																																																																																																													
STA. 379+27 RT.	1																																																																																																																													
STA. 113+51 RT.	1																																																																																																																													
STA. 43+58 LT.	1																																																																																																																													
STA. 56+31 RT.	1																																																																																																																													
TOTAL	4 EACH																																																																																																																													
LOCATION	EACH																																																																																																																													
STA. 58+11 RT.	1																																																																																																																													
LOCATION	EACH																																																																																																																													
STA. 43+50 LT.	1																																																																																																																													
STA. 56+50 RT.	1																																																																																																																													
TOTAL	2 EACH																																																																																																																													
LOCATION	EACH																																																																																																																													
STA. 376+60 RT.	1																																																																																																																													
STA. 378+50 RT.	1																																																																																																																													
STA. 380+40 RT.	1																																																																																																																													
STA. 382+30 RT.	1																																																																																																																													
STA. 116+80 LT.	1																																																																																																																													
STA. 114+90 LT.	1																																																																																																																													
STA. 113+00 LT.	1																																																																																																																													
STA. 111+10 LT.	1																																																																																																																													
STA. 40+25 LT.	1																																																																																																																													
STA. 42+35 LT.	1																																																																																																																													
STA. 44+40 LT.	1																																																																																																																													
STA. 46+60 LT. / RT.	2																																																																																																																													
STA. 48+80 LT. / RT.	2																																																																																																																													
STA. 51+15 LT. / RT.	2																																																																																																																													
STA. 53+35 LT. / RT.	2																																																																																																																													
STA. 55+55 LT.	1																																																																																																																													
STA. 57+70 LT.	1																																																																																																																													
STA. 59+80 LT.	1																																																																																																																													
TOTAL	22 EACH																																																																																																																													
LOCATION	FOOT																																																																																																																													
STA. 376+60 RT.	6.5																																																																																																																													
STA. 378+50 RT.	6.5																																																																																																																													
STA. 380+40 RT.	6.5																																																																																																																													
STA. 382+30 RT.	6.5																																																																																																																													
STA. 116+80 LT.	6.5																																																																																																																													
STA. 114+90 LT.	6.5																																																																																																																													
STA. 113+00 LT.	6.5																																																																																																																													
STA. 111+10 LT.	6.5																																																																																																																													
STA. 40+25 LT.	6.5																																																																																																																													
STA. 42+35 LT.	6.5																																																																																																																													
STA. 43+50 LT.	6.5																																																																																																																													
STA. 44+40 LT.	6.5																																																																																																																													
STA. 46+60 LT.	6.5																																																																																																																													
STA. 46+60 RT.	6.5																																																																																																																													
STA. 48+80 LT.	6.5																																																																																																																													
STA. 48+80 RT.	6.5																																																																																																																													
STA. 51+15 LT.	6.5																																																																																																																													
STA. 51+15 RT.	6.5																																																																																																																													
STA. 53+35 LT.	6.5																																																																																																																													
STA. 53+35 RT.	6.5																																																																																																																													
STA. 55+55 LT.	6.5																																																																																																																													
STA. 56+50 RT.	6.5																																																																																																																													
STA. 57+70 LT.	6.5																																																																																																																													
STA. 59+80 LT.	6.5																																																																																																																													
Total =	156 FOOT																																																																																																																													

INDEX OF SHEETS

- | | |
|-----|--|
| 1 | COVER SHEET |
| 2 | GENERAL NOTES, SCHEDULES AND INDEX OF SHEETS |
| 3-4 | SUMMARY OF QUANTITIES |
| 5 | EXISTING LIGHTING REMOVAL PLAN SHEET |
| 6 | PROPOSED LIGHTING PLAN SHEET |
| 7 | WIRING DIAGRAM & ELECTRIC SERVICE MOUNTING DETAILS |

SUMMARY OF QUANTITIES

LOCATION OF WORK:

DOUGLAS CO.
I-57
&
IL 133
ARCOLA
100% STATE

CONSTRUCTION TYPE CODE:

0021

CODE NO	ITEM	UNIT	TOTAL QUANTITY	QUANTITY
67100100	MOBILIZATION	L SUM	1.0	1.0
70100825	TRAFFIC CONTROL AND PROTECTION, STANDARD 701456	L SUM	1.0	1.0
80400100	ELECTRIC SERVICE INSTALLATION	EACH	1.0	1.0
81028760	UNDERGROUND CONDUIT, COILABLE NONMETALLIC CONDUIT, 2 1/2" DIA.	FOOT	260.0	260.0
81028770	UNDERGROUND CONDUIT, COILABLE NONMETALLIC CONDUIT, 3" DIA.	FOOT	240.0	240.0
81603030	UNIT DUCT, 600V, 2-1C NO.4, 1/C NO.6 GROUND, (XLP-TYPE USE), 1" DIA. POLYETHYLENE	FOOT	2,580.0	2,580.0
81603040	UNIT DUCT, 600V, 2-1C NO.6, 1/C NO.8 GROUND, (XLP-TYPE USE), 1" DIA. POLYETHYLENE	FOOT	6,110.0	6,110.0
82500330	LIGHTING CONTROLLER, PEDESTAL MOUNTED, 240VOLT, 60AMP	EACH	1.0	1.0
83060830	LIGHT POLE, GALVANIZED STEEL, 45 FT. M.H., TENON MOUNT	EACH	22.0	22.0
83060835	LIGHT POLE, GALVANIZED STEEL, 45 FT. M.H., TENON MOUNT-TWIN	EACH	2.0	2.0
83600300	LIGHT POLE FOUNDATION, 30" DIAMETER	FOOT	156.0	156.0
83800650	BREAKAWAY DEVICE, COUPLING WITH STAINLESS STEEL SCREEN	EACH	76.0	76.0
84200600	REMOVAL OF LIGHTING UNIT, NO SALVAGE	EACH	2.0	2.0

15

FILE NAME *	USER NAME # biggard	DESIGNED -	REVISED -	STATE OF ILLINOIS DEPARTMENT OF TRANSPORTATION	SUMMARY OF QUANTITIES	F.A. RTE.	SECTION	COUNTY	TOTAL SHEETS	SHEET NO.	
cr:\pwwork\pavidot\biggard\0404932\057078-sh1-Plan.dgn		DRAWN -	REVISED -								
PLOT SCALE # 1/8"=1'-0"		CHECKED -	REVISED -			SCALE:	SHEET OF	SHEETS	STA.	TO STA.	
PLOT DATE # 1/6/2015		DATE -	REVISED -			CONTRACT NO.					
ILLINOIS FED. AID PROJECT											

SUMMARY OF QUANTITIES

LOCATION OF WORK:

DOUGLAS CO.
I-57
&
IL 133
ARCOLA
100% STATE


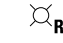

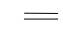

CONSTRUCTION TYPE CODE:

0021

CODE NO	ITEM	UNIT	TOTAL QUANTITY	QUANTITY
84200804	REMOVAL OF POLE FOUNDATION	EACH	2.0	2.0
84500110	REMOVAL OF LIGHTING CONTROLLER	EACH	1.0	1.0
84500120	REMOVAL OF ELECTRIC SERVICE INSTALLATION	EACH	1.0	1.0
84500130	REMOVAL OF LIGHTING CONTROLLER FOUNDATION	EACH	1.0	1.0
X1400089	LUMINAIRE, LED, MULTI-MOUNT, HW	EACH	26.0	26.0
X8420502	REMOVAL OF LIGHT TOWER, NO SALVAGE	EACH	4.0	4.0
X8420510	REMOVAL OF TOWER FOUNDATION	EACH	4.0	4.0

10

LEGEND

-  EXISTING TOWER TO BE REMOVED
-  EXISTING LIGHT POLE TO BE REMOVED
-  EXISTING LIGHTING CONTROLLER TO BE REMOVED
-  EXISTING CONDUIT
-  EXISTING LIGHTING UNIT DUCT



REMOVE LIGHT UNIT, NO SALVAGE = 1 EA.
REMOVE POLE FOUNDATION = 1 EA.

REMOVE LIGHT TOWER, NO SALVAGE = 1 EA.
REMOVE TOWER FOUNDATION = 1 EA.

REMOVE LIGHT TOWER, NO SALVAGE = 1 EA.
REMOVE TOWER FOUNDATION = 1 EA.

REMOVE LIGHT TOWER, NO SALVAGE = 1 EA.
REMOVE TOWER FOUNDATION = 1 EA.

REMOVE LIGHT TOWER, NO SALVAGE = 1 EA.
REMOVE TOWER FOUNDATION = 1 EA.

REMOVE LIGHTING CONTROLLER = 1 EA.
REMOVE LIGHTING CONTROLLER FOUNDATION = 1 EA.

REMOVE LIGHT UNIT, NO SALVAGE = 1 EA.
REMOVE POLE FOUNDATION = 1 EA.

ABANDONED UNIT DUCT

NOTE: SEE SCHEDULE OF REMOVAL ITEMS
ON SHEET 2

FILE NAME =	USER NAME = biggsrd	DESIGNED -	REVISED -
et:\pw\work\p\dot\biggsrd\d0404932\0570778-sht-Removal.dgn		DRAWN -	REVISED -
\$MODELNAME\$	PLOT SCALE = 7874.8157' / m	CHECKED -	REVISED -
	PLOT DATE = 1/6/2015	DATE -	REVISED -






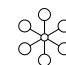
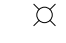

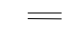

**STATE OF ILLINOIS
DEPARTMENT OF TRANSPORTATION**

EXISTING LIGHTING REMOVAL PLAN

SCALE: SHEET OF SHEETS STA. TO STA.

F.A.I. RTE.	SECTION	COUNTY	TOTAL SHEETS	SHEET NO.
57	(28X-1,30X-1)RS-4	DOUGLAS	7	5
CONTRACT NO. 70A78				
ILLINOIS FED. AID PROJECT				

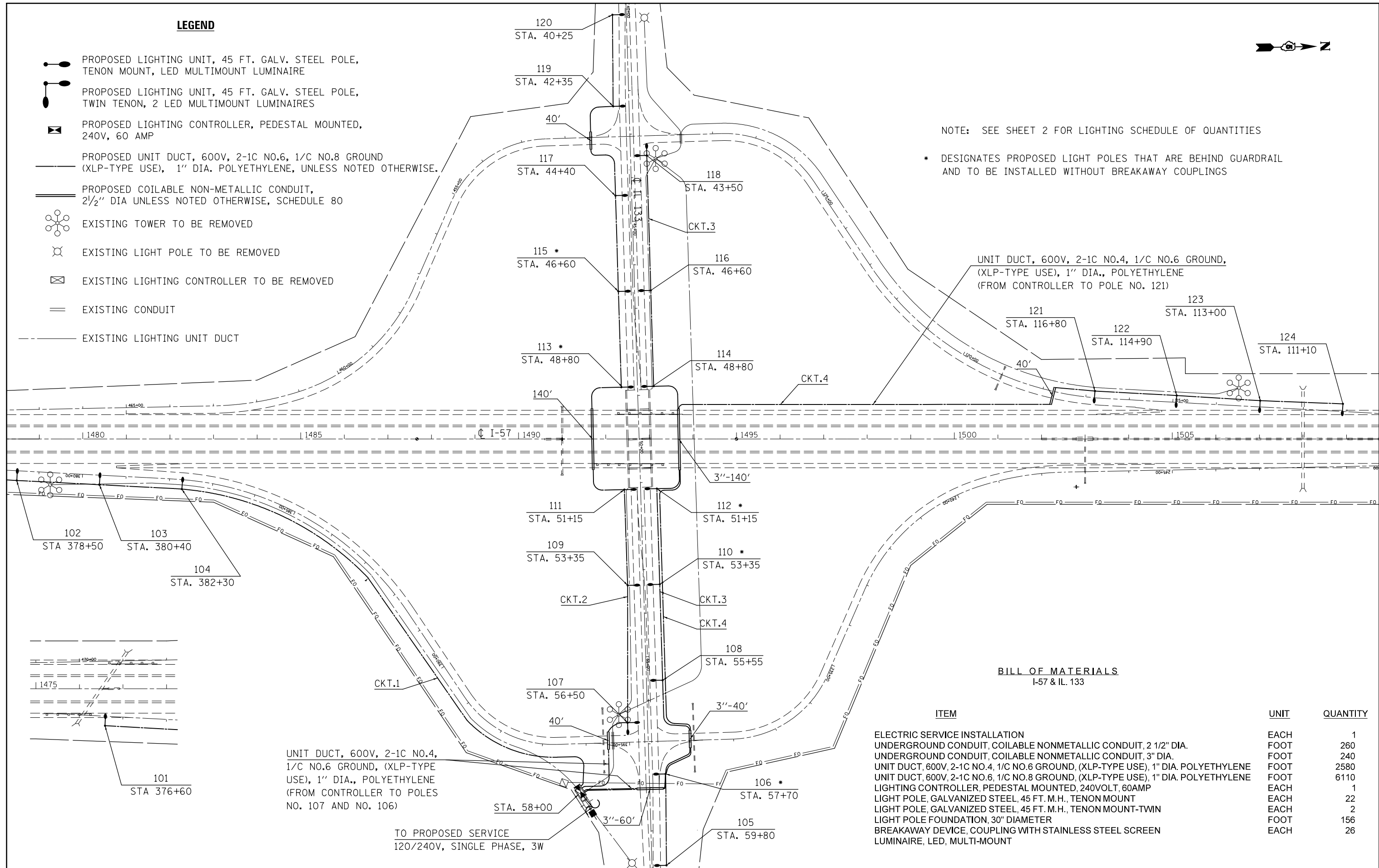
LEGEND

-  PROPOSED LIGHTING UNIT, 45 FT. GALV. STEEL POLE, TENON MOUNT, LED MULTIMOUNT LUMINAIRE
-  PROPOSED LIGHTING UNIT, 45 FT. GALV. STEEL POLE, TWIN TENON, 2 LED MULTIMOUNT LUMINAIRES
-  PROPOSED LIGHTING CONTROLLER, PEDESTAL MOUNTED, 240V, 60 AMP
-  PROPOSED UNIT DUCT, 600V, 2-1C NO.6, 1/C NO.8 GROUND (XLP-TYPE USE), 1" DIA. POLYETHYLENE, UNLESS NOTED OTHERWISE.
-  PROPOSED COILAIBLE NON-METALLIC CONDUIT, 2 1/2" DIA UNLESS NOTED OTHERWISE, SCHEDULE 80
-  EXISTING TOWER TO BE REMOVED
-  EXISTING LIGHT POLE TO BE REMOVED
-  EXISTING LIGHTING CONTROLLER TO BE REMOVED
-  EXISTING CONDUIT
-  EXISTING LIGHTING UNIT DUCT



NOTE: SEE SHEET 2 FOR LIGHTING SCHEDULE OF QUANTITIES

* DESIGNATES PROPOSED LIGHT POLES THAT ARE BEHIND GUARDRAIL AND TO BE INSTALLED WITHOUT BREAKAWAY COUPLINGS



UNIT DUCT, 600V, 2-1C NO.4, 1/C NO.6 GROUND, (XLP-TYPE USE), 1" DIA., POLYETHYLENE (FROM CONTROLLER TO POLE NO. 121)

UNIT DUCT, 600V, 2-1C NO.4, 1/C NO.6 GROUND, (XLP-TYPE USE), 1" DIA., POLYETHYLENE (FROM CONTROLLER TO POLES NO. 107 AND NO. 106)

TO PROPOSED SERVICE
120/240V, SINGLE PHASE, 3W

BILL OF MATERIALS
I-57 & IL. 133

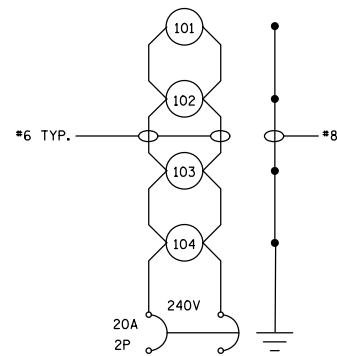
ITEM	UNIT	QUANTITY
ELECTRIC SERVICE INSTALLATION	EACH	1
UNDERGROUND CONDUIT, COILAIBLE NONMETALLIC CONDUIT, 2 1/2" DIA.	FOOT	260
UNDERGROUND CONDUIT, COILAIBLE NONMETALLIC CONDUIT, 3" DIA.	FOOT	240
UNIT DUCT, 600V, 2-1C NO.4, 1/C NO.6 GROUND, (XLP-TYPE USE), 1" DIA. POLYETHYLENE	FOOT	2580
UNIT DUCT, 600V, 2-1C NO.6, 1/C NO.8 GROUND, (XLP-TYPE USE), 1" DIA. POLYETHYLENE	FOOT	6110
LIGHTING CONTROLLER, PEDESTAL MOUNTED, 240VOLT, 60AMP	EACH	1
LIGHT POLE, GALVANIZED STEEL, 45 FT. M.H., TENON MOUNT	EACH	22
LIGHT POLE, GALVANIZED STEEL, 45 FT. M.H., TENON MOUNT-TWIN	EACH	2
LIGHT POLE FOUNDATION, 30" DIAMETER	FOOT	156
BREAKAWAY DEVICE, COUPLING WITH STAINLESS STEEL SCREEN	EACH	26
LUMINAIRE, LED, MULTI-MOUNT		

PROPOSED WIRING DIAGRAM

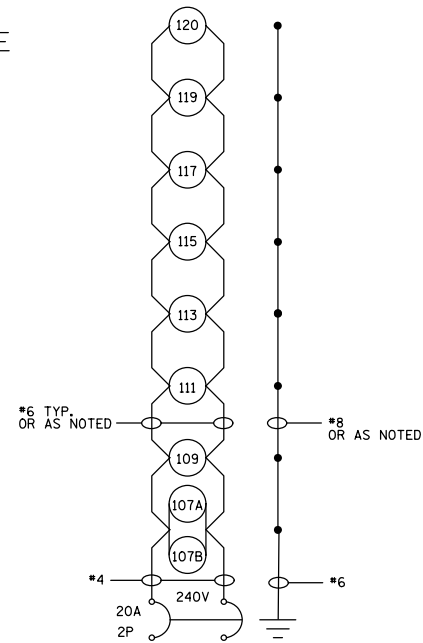
NOTE:

ALL NECESSARY REVISIONS TO THE WIRING SHOWN ON THIS SHEET SHALL BE MADE AT NO ADDITIONAL COST TO THE DEPARTMENT AND SHALL BE TO THE SATISFACTION OF THE ENGINEER.

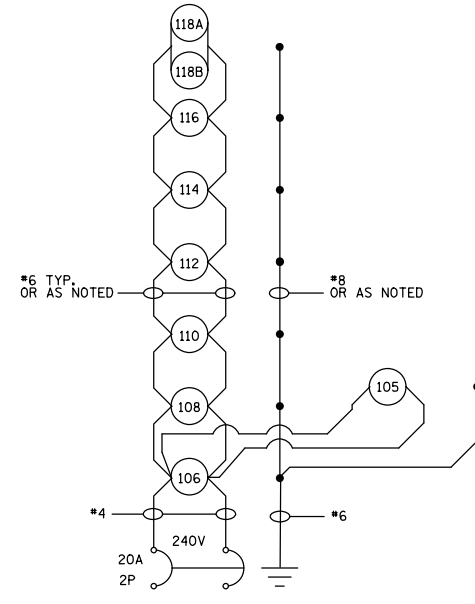
○ PROPOSED LUMINAIRE, LED



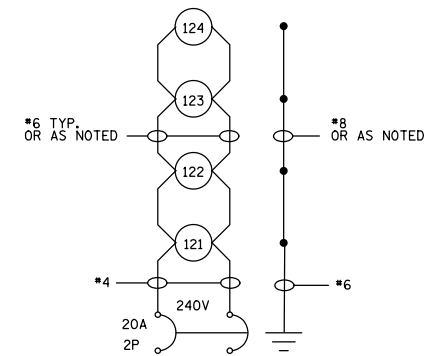
LIGHTING CKT 1
PROPOSED LIGHTING CONTROLLER



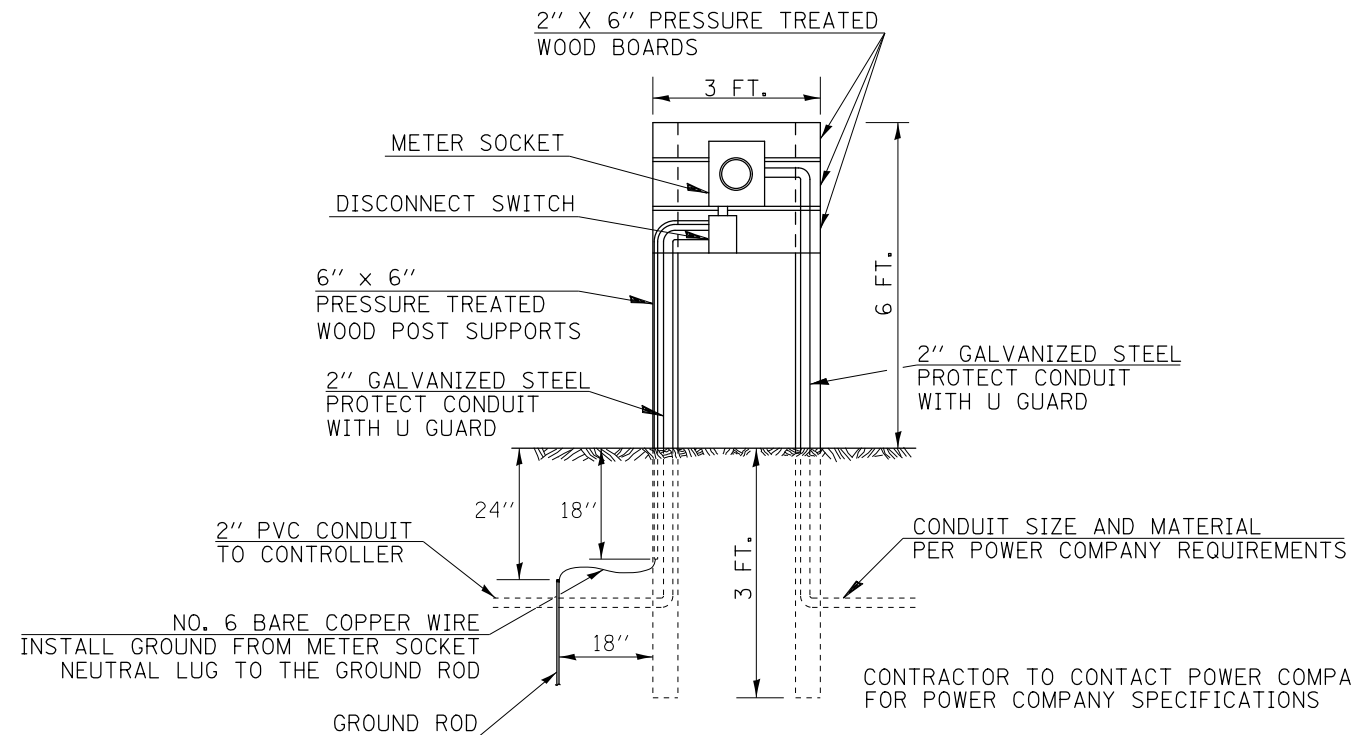
LIGHTING CKT 2
PROPOSED LIGHTING CONTROLLER



LIGHTING CKT 3
PROPOSED LIGHTING CONTROLLER



LIGHTING CKT 4
PROPOSED LIGHTING CONTROLLER



MOUNTING DETAIL OF ELECTRIC SERVICE INSTALLATION

NOTE: SERVICE INSTALLATION COMPONENTS TO BE IN ACCORDANCE WITH TO STANDARD 825011

FILE NAME =	USER NAME = biggsrd	DESIGNED -	REVISED -	STATE OF ILLINOIS DEPARTMENT OF TRANSPORTATION	WIRING DIAGRAMS	F.A.I. RTE.	SECTION	COUNTY	TOTAL SHEETS	SHEET NO.	
et:\pw\work\p\idot\biggsrd\d0404932\0570778-sht-Plens.dgn		DRAWN -	REVISED -			57	D5 LIGHTING CM 2015-1	DOUGLAS	7	7	
	PLOT SCALE = 1/574.8031' / m	CHECKED -	REVISED -			CONTRACT NO. 70A78					
MODELNAME	PLOT DATE = 4/15/2015	DATE -	REVISED -			ILLINOIS FED. AID PROJECT					