

06-12-2015 LETTING ITEM 096

STATE OF ILLINOIS
 DEPARTMENT OF TRANSPORTATION
 DIVISION OF HIGHWAYS
**PROPOSED
 HIGHWAY PLANS**

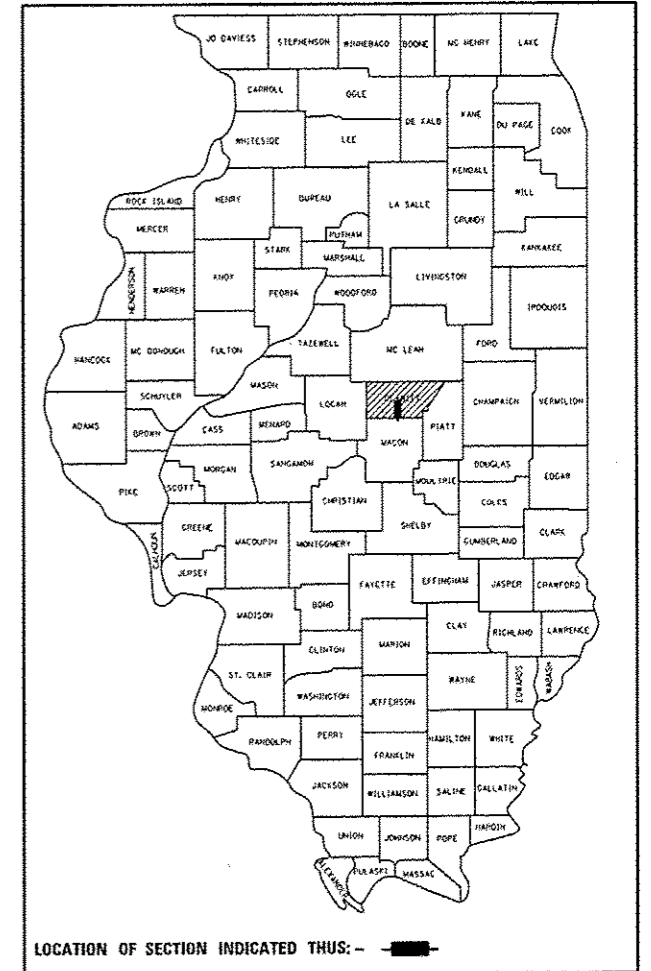
F.A.P. ROUTE 322 (U.S. 51)
 SECTION D5 BRIDGE PAINTING 2015-3

BRIDGE PAINTING
 DEWITT COUNTY

F.A.P. RTE.	SECTION	COUNTY	TOTAL SHEETS	SHEET NO.
322	*	DEWITT	6	1
		ILLINOIS	CONTRACT NO. 70B27	

*D5 BRIDGE PAINTING 2015-3

D-95-025-15

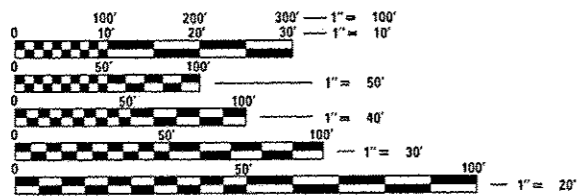
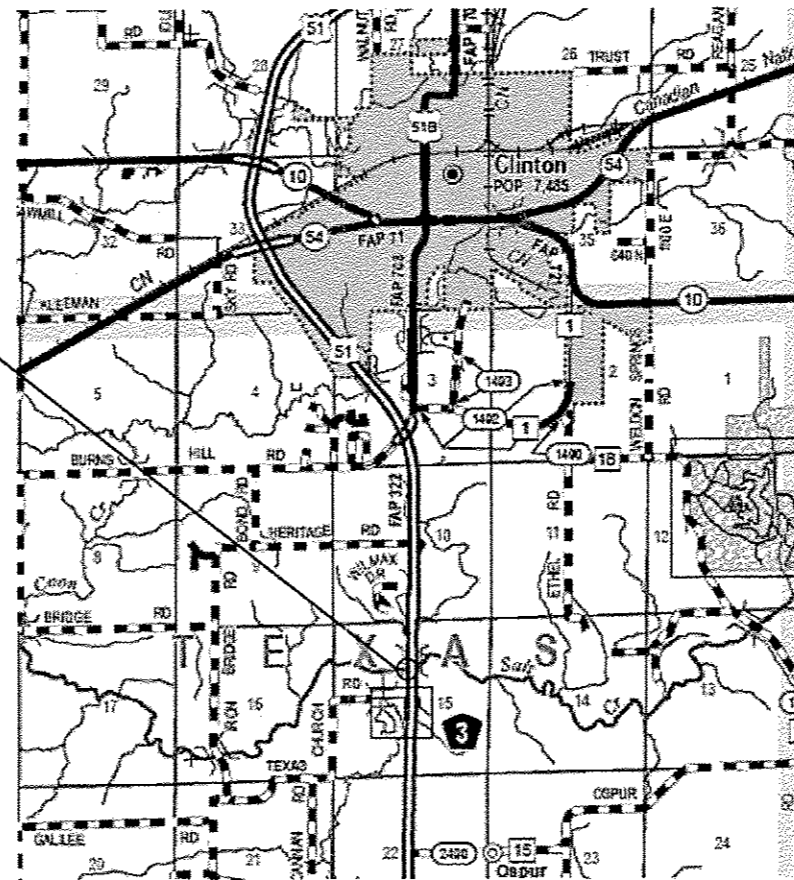


FOR INDEX OF SHEETS, SEE SHEET NO. 2
 FOR SUMMARY OF QUANTITIES, SEE SHEET NO. 3

CURRENT ADT
 ADT (2014) = 5,650

C-95-025-15

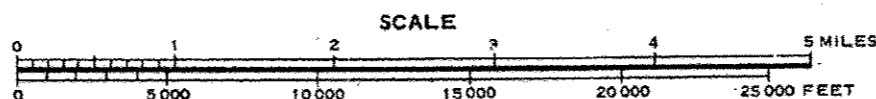
LOCATION 1
 S.N. 020-0005



FULL SIZE PLANS HAVE BEEN PREPARED USING STANDARD ENGINEERING SCALES. REDUCED SIZED PLANS WILL NOT CONFORM TO STANDARD SCALES. IN MAKING MEASUREMENTS ON REDUCED PLANS, THE ABOVE SCALES MAY BE USED.

J.U.L.I.E.
 JOINT UTILITY LOCATION INFORMATION FOR EXCAVATION
 1-800-892-0123 TOWNSHIPS: TEXAS
 OR 811

PROJECT ENGINEER: NANCY FASIG
 SQUAD LEADER: STEVE COOMBES
 DESIGNER: BYRON SMITH
 (217) 465-4181
 CONTRACT NO. 70B27



STATE OF ILLINOIS
 DEPARTMENT OF TRANSPORTATION
 DIVISION OF HIGHWAYS

SUBMITTED: March 6, 2015
David A. Janssen
 DEPUTY DIRECTOR OF HIGHWAYS, REGION ENGINEER

May 8, 2015
John D. Baranzello, PE
 ENGINEER OF DESIGN AND ENVIRONMENT

May 8, 2015
Chris Osman, PE
 DIRECTOR OF HIGHWAYS, CHIEF ENGINEER

**PRINTED BY THE AUTHORITY
 OF THE STATE OF ILLINOIS**

INDEX OF SHEETS

1	COVER SHEET
2	INDEX OF SHEETS, HIGHWAY STANDARDS, & GENERAL NOTES
3	SUMMARY OF QUANTITIES & BRIDGE DESCRIPTION LOCATION #1 S.N. 020-2005
4-6	BRIDGE INFORMATION LOCATION #1 S.N. 020-0005

HIGHWAY STANDARDS

000001-06	STANDARD SYMBOLS, ABBREVIATIONS AND PATTERNS
701101-04	OFF-ROAD OPERATIONS, MULTILANE, 15' (4.5 m) TO 24" (600 mm) FROM PAVEMENT EDGE
701106-02	OFF-ROAD OPERATIONS, MULTILANE, MORE THAN 15' (4.5 m) AWAY
701400-08	APPROACH TO LANE CLOSURE, FREEWAY/EXPRESSWAY
701401-09	LANE CLOSURE, FREEWAY/EXPRESSWAY
701901-04	TRAFFIC CONTROL DEVICES

GENERAL NOTES

G.N.-100
ENGLISH UNITS OF MEASURE SHALL GOVERN OVER AND SUPERSEDE ANY METRIC UNITS SHOWN IN THIS CONTRACT. WHERE INCLUDED, METRIC UNITS ARE FOR INFORMATION ONLY.

G.N.-100A
ELECTRONIC FILES AND/OR ELECTRONIC SURVEY INFORMATION INCLUDING CADD FILES WILL NOT BE AVAILABLE TO THE CONTRACTOR.

G.N.-501A
THE EXISTING STRUCTURAL STEEL COATING CONTAINS LEAD. THE CONTRACTOR SHALL FOLLOW THE GUIDE BRIDGE SPECIAL PROVISIONS FOR CONTAINMENT AND DISPOSAL OF LEAD PAINT CLEANING RESIDUES TO DEAL WITH THE PRESENCE OF LEAD ON THIS PROJECT.

ONLY THE STRUCTUAL STEEL AND OTHER DESIGNATED SURFACES SHALL BE PAINTED. ALL OTHER SURFACES SHALL BE PROTECTED FROM CONTRACTORS BLASTING AND PAINTING OPERATIONS. ANY OVERSPRAY OR DAMAGED AREAS WILL BE REMOVED OR REPAIRED AT THE CONTRACTORS EXPENSE AND NO ADDITIONAL COMPENSATION WILL BE ALLOWED.

ALL TRASH AND PAINTING DEBRIS, EXCLUDING WASTE BARRELS OR ROLL-OFF DUMPSTERS, SHALL BE REMOVED.

THE SSPC-QP1 AND QP2 PAINTING CONTRACTOR CERTIFICATIONS WILL BE REQUIRED FOR THIS CONTRACT.

*05 BRIDGE PAINTING 2015-3

FILE NAME :	USER NAME : boombasef	DESIGNED -	REVISED -	STATE OF ILLINOIS DEPARTMENT OF TRANSPORTATION	INDEX OF SHEETS, HIGHWAY STANDARDS, & GENERAL NOTES	F.A.P. RTE.	SECTION	COUNTY	TOTAL SHEETS	SHEET NO.	
ct:\pvc\work\p\dot\boombasef\0421850\70	127-ahtr-plan.dgn	DRAWN -	REVISED -			322	.	DEWITT	6	2	
	PLOT SCALE = 40,0000' / in.	CHECKED -	REVISED -			CONTRACT NO. 70B27					
	PLOT DATE = 2/27/2015	DATE -	REVISED -			[ILLINOIS] FED. AID PROJECT					
					SCALE:	SHEET NO. OF SHEETS		STA. TO STA.			

215 21 NAM

SUMMARY OF QUANTITIES

LOCATION OF WORK: LOCATION #1
 F.A.P. 322
 STR# 020-0005
 DEWITT CO.
 RURAL
 100 % STATE
 CONSTRUCTION TYPE CODE: 0014
 TOTAL QUANTITY

CODE NO.	DESCRIPTION	UNIT	TOTAL QUANTITY
67100100	MOBILIZATION	L SUM	1.0
70100800	TRAFFIC CONTROL AND PROTECTION STANDARD 701401	L SUM	1.0
X5067501	BRIDGE CLEANING AND PAINTING WARRANTY NUMBER 1	L SUM	1.0
X7010410	SPEED DISPLAY TRAILER	CAL MO	2.0
X7015005	CHANGEABLE MESSAGE SIGN	CAL DA	7.0
Z0007101	CONTAINMENT AND DISPOSAL OF LEAD PAINT CLEANING RESIDUES NO. 1	L SUM	1.0
Z0010501	CLEANING AND PAINTING STEEL BRIDGE NO.1	L SUM	1.0

X

**LOCATION #1
DESCRIPTION**

DESCRIPTION: FAP 322 US51(SB), 2 MILES SOUTH OF CLINTON
 COUNTY: DEWITT
 ROUTE: FAP 322
 MARKED ROUTE: US 51 SALT CREEK
 SECTION: 52 BR
 STRUCTURE NO.: 020-0005
 TYPE OF STRUCTURE 4 SPAN - 7 BEAM LINES PAINTED STEEL

CLEANING AND PAINTING OF THE EXISTING STRUCTURAL STEEL SHALL BE AS SPECIFIED IN THE SPECIAL PROVISIONS FOR "CLEANING AND PAINTING EXISTING STEEL STRUCTURES." ALL BEAMS, BEARINGS AND OTHER STRUCTURAL STEEL SHALL BE CLEANED PER NEAR WHITE BLASTING SSPC-SP10.

THE EXISTING STRUCTURAL STEEL COATING CONTAINS LEAD. THE CONTRACTOR SHALL FOLLOW THE GUIDE BRIDGE SPECIAL PROVISIONS FOR CONTAINMENT AND DISPOSAL OF LEAD PAINT CLEANING RESIDUES TO DEAL THE PRESENCE OF LEAD ON THIS STRUCTURE.

THE DESIGNATED AREAS CLEANED PER NEAR WHITE BLAST CLEANING SSPC-SP10 SHALL BE PAINTED ACCORDING TO THE REQUIREMENTS OF PAINT SYSTEM 1OZ/E/U. THE COLOR OF THE FINAL FINISH COAT FOR ALL INTERIOR AND EXTERIOR STEEL BOTTOM FLANGE FASCIA BEAMS SURFACES SHALL BE GRAY, MUNSELL NO. 5B 7/1.

PAINT WARRANTY REQUIRED FOR THIS BRIDGE

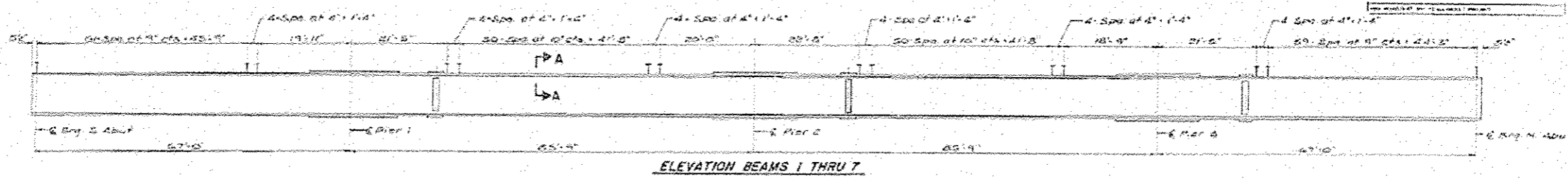
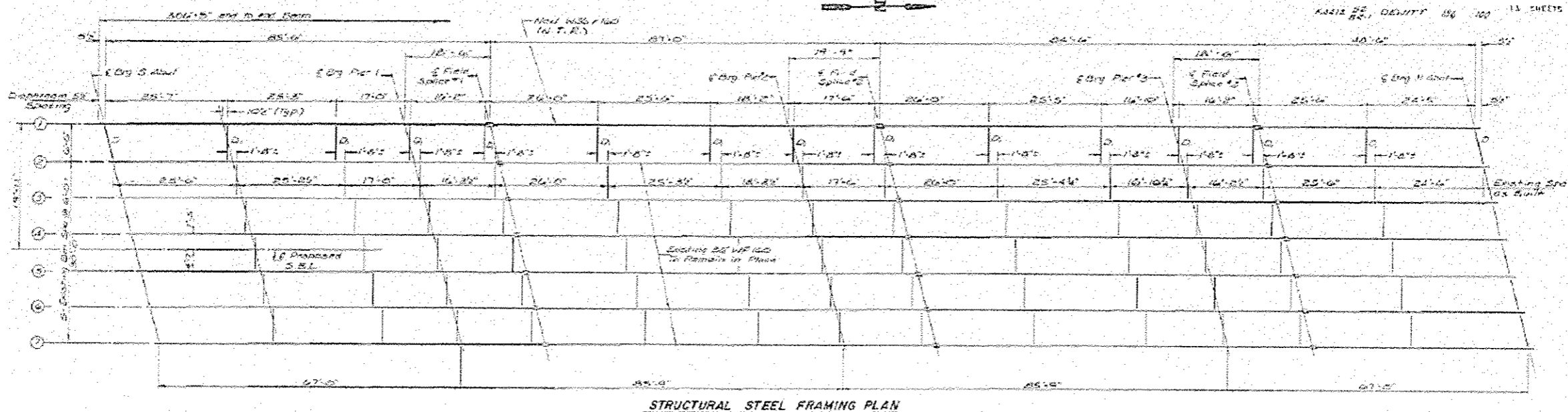
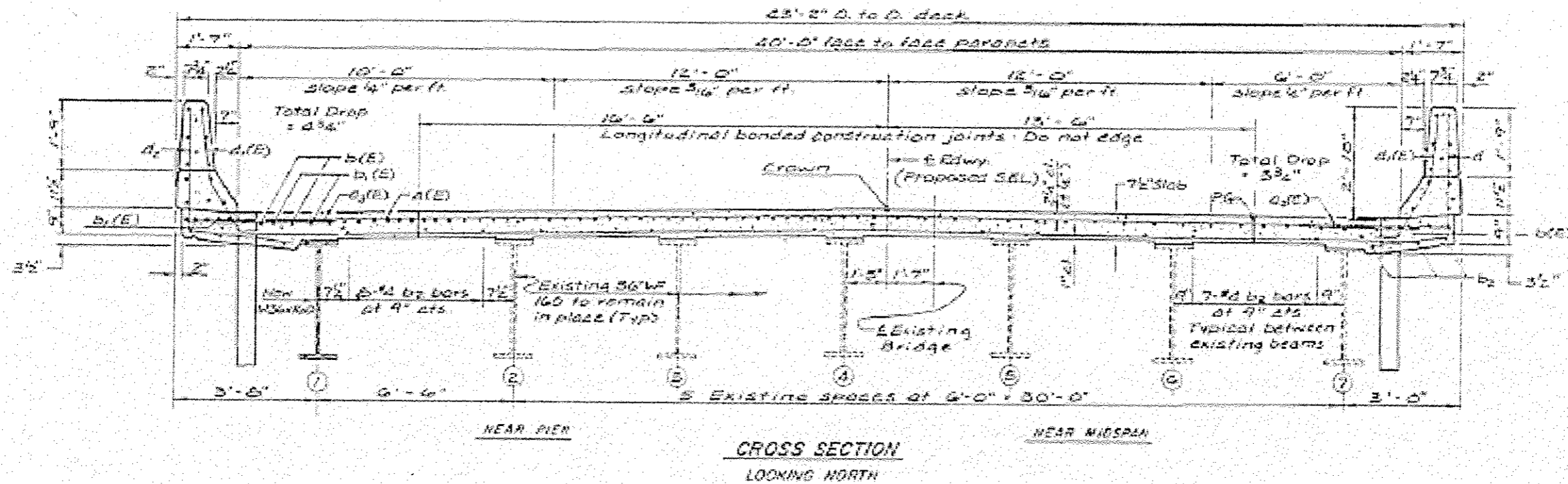
A MINIMUM OF THREE (3) HIGH VOLUME AIR MONITORS WILL BE REQUIRED TO MONITOR AIR QUALITY DURING DUST PRODUCING OPERATIONS AT THIS SITE. SEE SPECIAL PROVISIONS FOR CONTAINMENT AND DISPOSAL OF LEAD PAINT CLEANING RESIDUES.

NOTE: DECK DRAIN DOWNSPOUT EXTENSIONS ALONG THE FASCIA BEAMS ARE TO RECEIVE A COAT OF EPOXY AND A COAT OF URETHANE FINISH. THE DOWNSPOUTS ARE TO BE FREE OF DIRT, SALTS AND BLASTING RESIDUE BEFORE COATING APPLICATION. COST OF PAINTING DOWNSPOUTS ARE TO BE INCLUDED WITH CLEANING AND PAINTING OF STRUCTURAL STEEL.

*05 BRIDGE PAINTING 2015-3

FILE NAME :	USER NAME : coombesef	DESIGNED -	REVISED -	STATE OF ILLINOIS DEPARTMENT OF TRANSPORTATION	SUMMARY OF QUANTITIES & LOCATION #1 DESCRIPTION	F.A.P. RTE.	SECTION	COUNTY	TOTAL SHEETS	SHEET NO.
en:\pvc\work\pvc\dot\coombesef\0204210501\7027.rht-plan.dgn	DRAWN -	REVISED -	322			-	DEWITT	6	3	
PLOT SCALE = 48.0000 / in.	CHECKED -	REVISED -	CONTRACT NO. 70827							
PLOT DATE = 2/2/2015	DATE -	REVISED -	ILLINOIS FED. AID PROJECT							
					SCALE:	SHEET NO. OF SHEETS		STA. TO STA.		

FOR INFORMATION ONLY
S.N. 020-0005

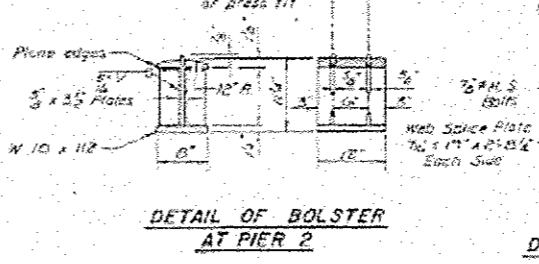
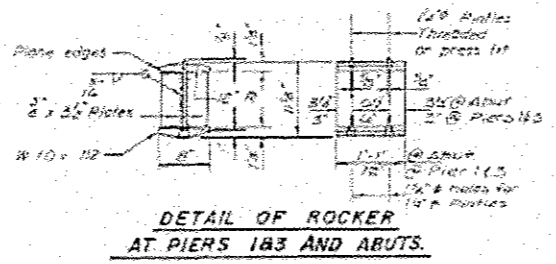
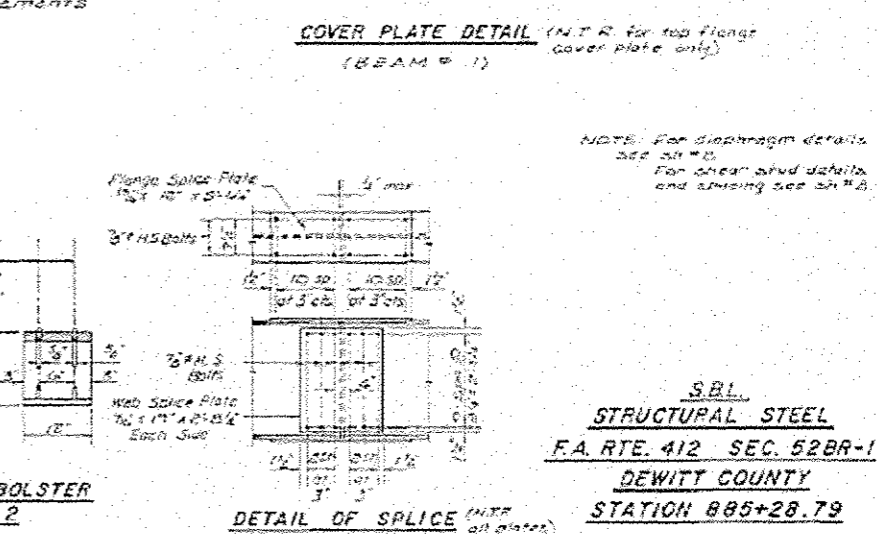
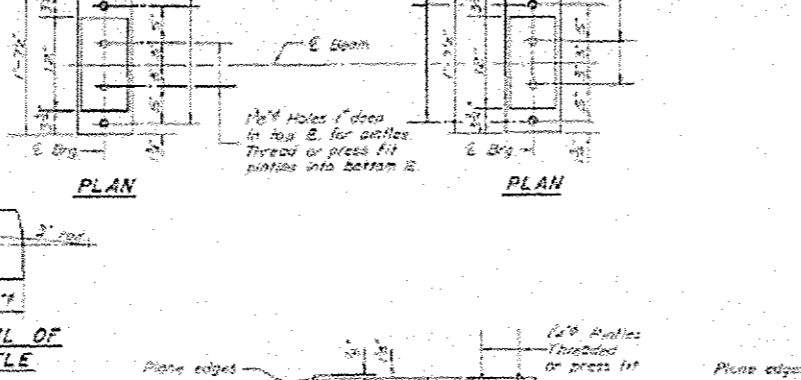
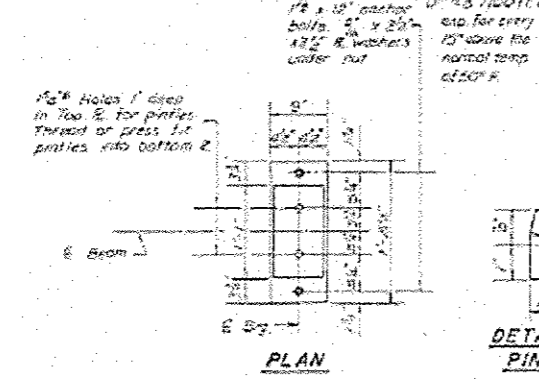
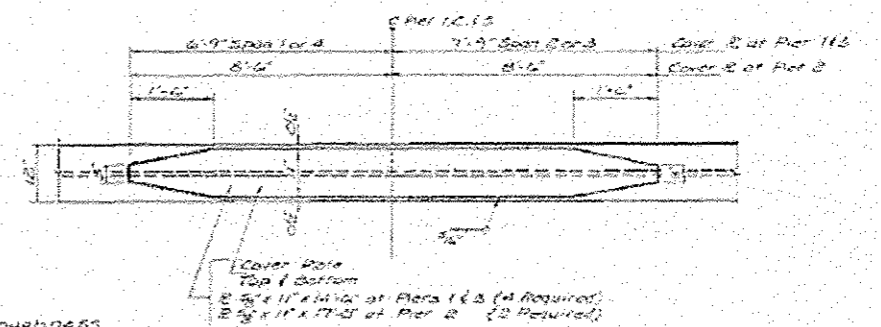
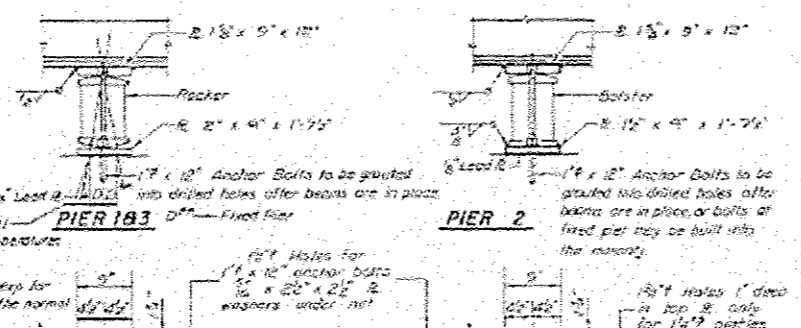
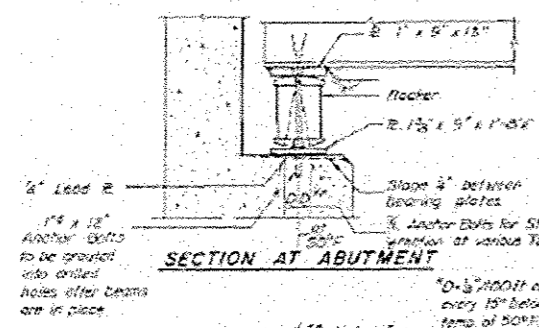
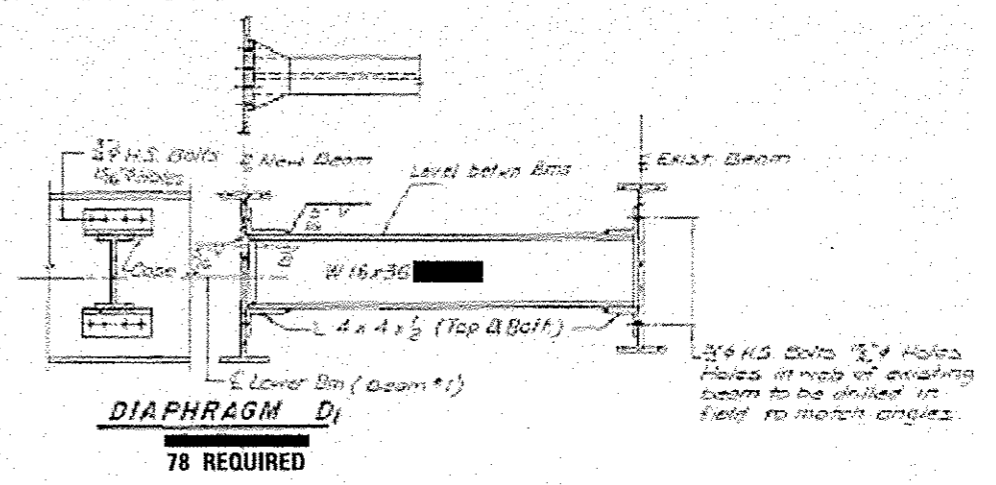
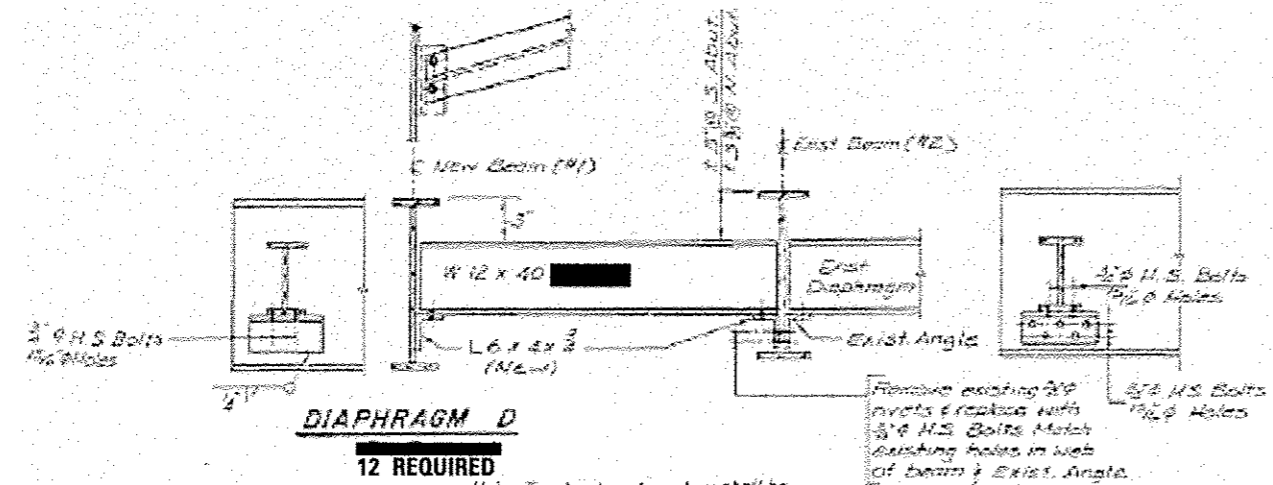


WORK LIMITS INCLUDE ALL STRUCTURAL STEEL AT THIS BRIDGE

05 BRIDGE PAINTING 2015-3

FILE NAME : c:\p\work\pawdot\coombess\10421850\7027-shs-plan.dgn	USER NAME : coombessf	DESIGNED : -	REVISED : -	STATE OF ILLINOIS DEPARTMENT OF TRANSPORTATION	LOCATION #1 STRUCTURE DETAILS			F.A.P. RTE. 322	SECTION -	COUNTY DEWITT	TOTAL SHEETS 6	SHEET NO. 5			
PLT SCALE : 40,0000 ' / in.	CHECKED : -	REVISED : -	REVISED : -					SCALE:	SHEET NO. OF SHEETS	STA. TO STA.	CONTRACT NO. 70B27				
PLT DATE : 2/2/2015	DATE : -	REVISED : -	REVISED : -					ILLINOIS FED. AID PROJECT							

FOR INFORMATION ONLY
S.N. 020-0005



S.B.L.
STRUCTURAL STEEL
F.A. RTE. 412 SEC. 52BR-1
DEWITT COUNTY
STATION 885+28.79

WORK LIMITS INCLUDE ALL STRUCTURAL STEEL AT THIS BRIDGE

*05 BRIDGE PAINTING 2015-3

FILE NAME: c:\pwwork\pudoc\coombessf\042105017027-shr-plan.dgn	USER NAME: coombessf	DESIGNED: -	REVISED: -	STATE OF ILLINOIS DEPARTMENT OF TRANSPORTATION	LOCATION #1 STRUCTURE DETAILS	F.A.P. RTE. 322	SECTION -	COUNTY DEWITT	TOTAL SHEETS 6	SHEET NO. 6		
PLT SCALE: 40,0000 1/2 in.	CHECKED: -	REVISED: -	SCALE: -			SHEET NO. -	OF SHEETS -	STA. -	TO STA. -	CONTRACT NO. 70B27		
PLT DATE: 2/2/2015	DATE: -	REVISED: -	ILLINOIS FED. AID PROJECT									