

STATE OF ILLINOIS
DEPARTMENT OF TRANSPORTATION
DIVISION OF HIGHWAYS

**PROPOSED
IMPROVEMENTS**

FAI 55, FAU 7998, FAP 325
(I-55/L 108, I-55/EAST LAKE DRIVE, I-55/L 16)
Section D6 PATCHING 2015

MONTGOMERY & SANGAMON CO.

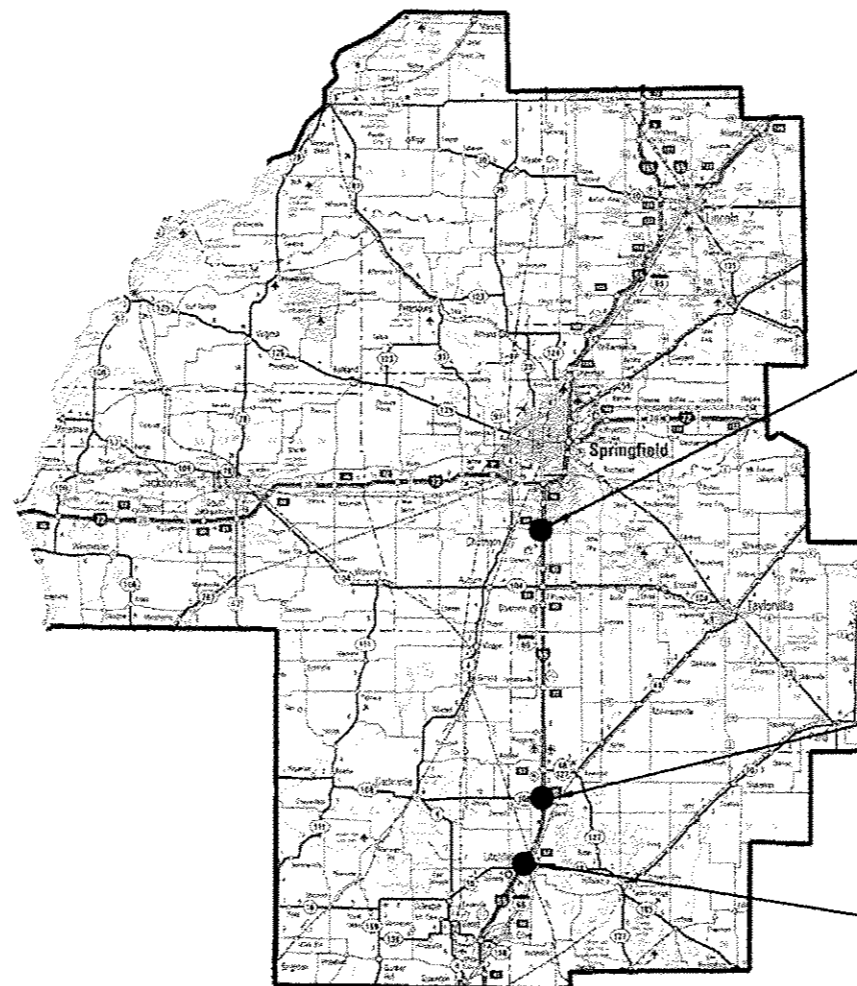
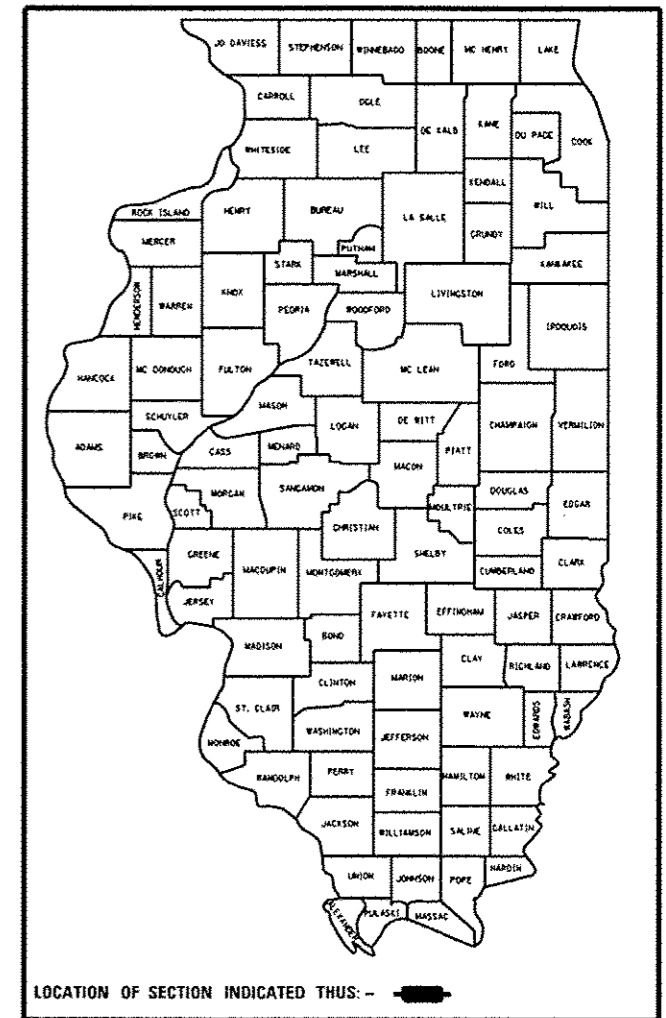
C-96-056-15

FOR INDEX OF SHEETS, SEE SHEET NO. 2

RTE.	SECTION	COUNTY	TOTAL SHEETS	SHEET NO.
*	D6 PATCHING 2015	VARIOUS	8	1
ILLINOIS CONTRACT NO. 72H79				

* FAI 55, FAU 7998, FAP 325
(I-55 & IL 108, I-55 & EAST LAKE DRIVE, I-55 & IL 16)

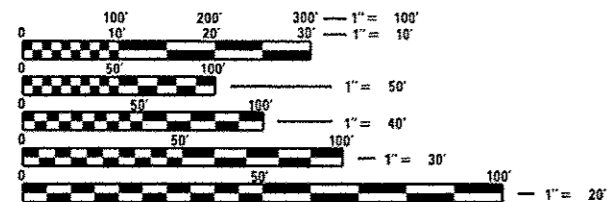
D-96-056-15



LOCATION #1

LOCATION #2

LOCATION #3



FULL SIZE PLANS HAVE BEEN PREPARED USING STANDARD ENGINEERING SCALES. REDUCED SIZED PLANS WILL NOT CONFORM TO STANDARD SCALES. IN MAKING MEASUREMENTS ON REDUCED PLANS, THE ABOVE SCALES MAY BE USED.

J.U.L.I.E.
JOINT UTILITY LOCATION INFORMATION FOR EXCAVATION
1-800-892-0123
OR 811

PROJECT ENGINEER
PROJECT MANAGER

CONTRACT NO. 72H79

LOCATION MAP

STATE OF ILLINOIS
DEPARTMENT OF TRANSPORTATION
DIVISION OF HIGHWAYS

SUBMITTED April 3, 2015
Roger L. Dushell, Jr.
DEPUTY DIRECTOR OF HIGHWAYS, REGION ENGINEER

May 8, 2015
John D. Baranzelli, PE
ENGINEER OF DESIGN AND ENVIRONMENT

May 8, 2015
Orin Osman, PE
DIRECTOR OF HIGHWAYS, CHIEF ENGINEER

PRINTED BY THE AUTHORITY
OF THE STATE OF ILLINOIS

INDEX OF SHEETS

- 1. COVER
- 2. INDEX OF SHEETS, GENERAL NOTES, AND HIGHWAY STANDARDS
- 3. SUMMARY OF QUANTITIES
- 4-6. PLANS
- 7-8. TYPICAL SECTIONS

HIGHWAY STANDARDS

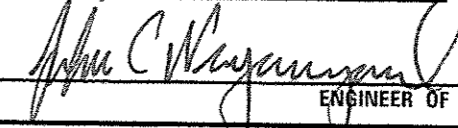
- 442201-03 CLASS C & D PATCHES
- 701001-02 OFF-RD OPERATIONS, 2L, 2W, MORE THAN 15' AWAY FROM EDGE OF PAVEMENT
- 701201-04 LANE CLOSURE, 2L, 2W, DAY ONLY, FOR SPEED >45 MPH.
- 701422-07 LANE CLOSURE, MULTILANE, FOR SPEEDS >45 MPH TO 55 MPH.
- 701451-03 RAMP CLOSURE FREEWAY/EXPRESSWAY.
- 701701-09 URBAN LANE CLOSURE, MULTILANE INTERSECTION.
- 701901-04 TRAFFIC CONTROL DEVICES


GENERAL NOTES

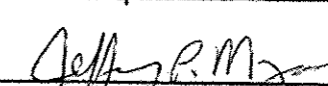
- 1. ANY REFERENCE TO THE STANDARDS THROUGHOUT THE PLANS SHALL BE INTERPRETED TO BE THE LATEST STANDARDS OF THE DEPARTMENT AS INCLUDED IN THE PLANS.

MIXTURE REQUIREMENTS	
THE FOLLOWING MIXTURE REQUIREMENTS ARE APPLICABLE FOR THIS PROJECT	
MIXTURE USES (S):	CLASS D PATCHES 3" INCH
AC/PG:	PG 64-22
DESIGN AIR VOIDS:	4.0% @ N50
MIXTURE COMPOSITION:	IL 9.5
FRICTION AGGREGATE:	MIX C
QUALITY MANAGEMENT	QC/QA

**STATE OF ILLINOIS
DEPARTMENT OF TRANSPORTATION
DIVISION OF HIGHWAYS
DISTRICT 6**

EXAMINED APRIL 3rd 20 15

 ENGINEER OF OPERATIONS

EXAMINED April 2 20 15

 ENGINEER OF PROJECT IMPLEMENTATION

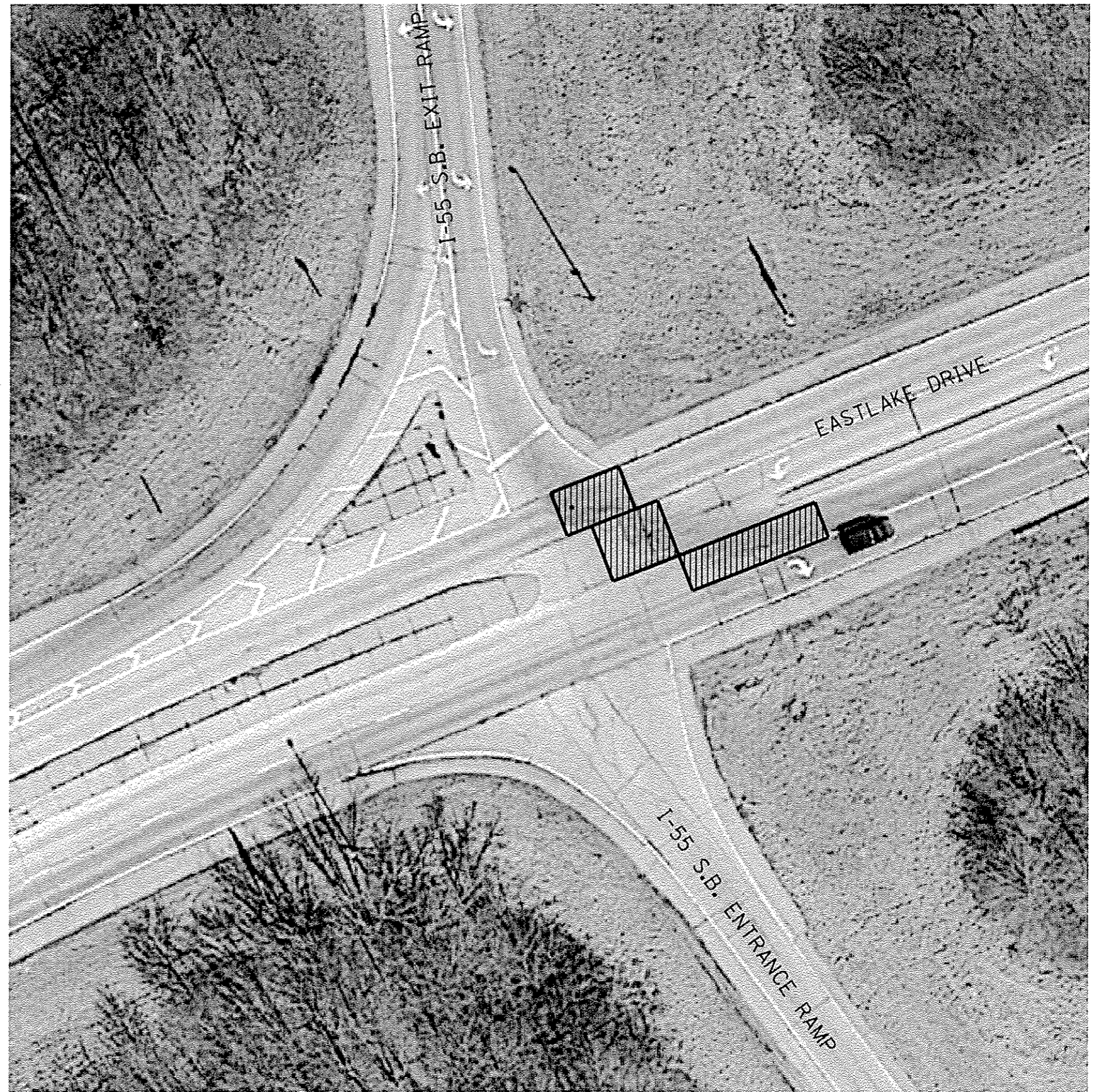
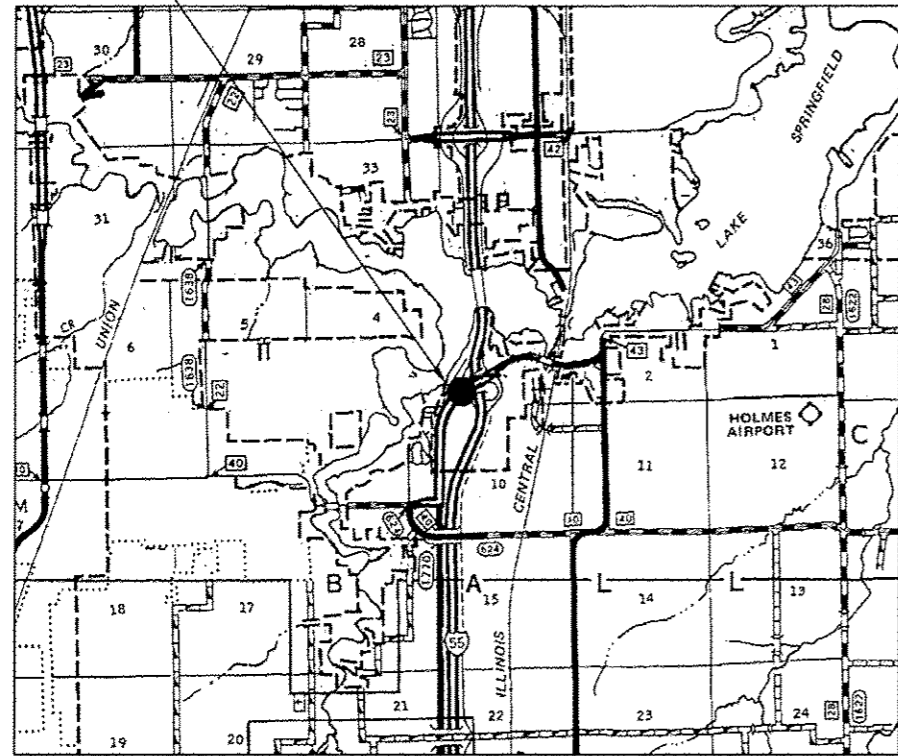
EXAMINED April 3 20 15

 ENGINEER OF PROGRAM DEVELOPMENT

FILE NAME	USER NAME	DESIGNED	REVISED	STATE OF ILLINOIS DEPARTMENT OF TRANSPORTATION	INDEX OF SHEETS, HIGHWAY STANDARDS AND GENERAL NOTES	RTE.	SECTION	COUNTY	TOTAL SHEETS	SHEET NO.	
#FILE#		DRAWN	REVISED			8	D6 PATCHING 2015	MONT., SANG.	8	2	
		CHECKED	REVISED			CONTRACT NO. 72479					
Default		DATE	REVISED			ILLINOIS FED. AID PROJECT					

* F&E 55, FAU 7998, F&I 325 (1-55) @ IL 108, I-55 @ EAST ALEX DRIVE, I-55 @ IL 18)

CODE NO.	ITEM	UNIT	TOTAL QUANTITY	100 % STATE		
				CONSTR. CODE	CONSTR. CODE	CONSTR. CODE
				LOCATION #1 FAU 7998	LOCATION #2 FAP 325	LOCATION #3 FAI 55
				ROADWAY 0005 URBAN	ROADWAY 0005 RURAL	ROADWAY 0005 RURAL
44200988	CLASS B PATCHES, TYPE IV, 11 INCH	50 YD	534	72	462	0
44201013	CLASS B PATCHES, TYPE IV, 13 INCH	50 YD	171	0	0	171
44201299	DOWEL BARS 1 1/2"	EACH	184	46	92	46
44201684	CLASS D PATCHES, TYPE IV, 3 INCH	SQ YD	769	136	462	171
44213200	SAW CUTS	FOOT	1,124	156	692	276
44213204	TIE BARS 3/4"	EACH	213	16	143	54
67100100	MOBILIZATION	L SUM	1	0.33	0.33	0.34
70100450	TRAFFIC CONTROL AND PROTECTION, STANDARD 701201	L SUM	1	0	1	0
70100320	TRAFFIC CONTROL AND PROTECTION, STANDARD 701422	L SUM	1	0	0	1
70100820	TRAFFIC CONTROL AND PROTECTION, STANDARD 701451	L SUM	1	0.33	0.33	0.34
70102635	TRAFFIC CONTROL AND PROTECTION, STANDARD 701701	L SUM	1	0.5	0.5	0
70106800	CHANGEABLE MESSAGE SIGN	CAL MO.	1.0	0.33	0.33	0.34

LOCATION #1



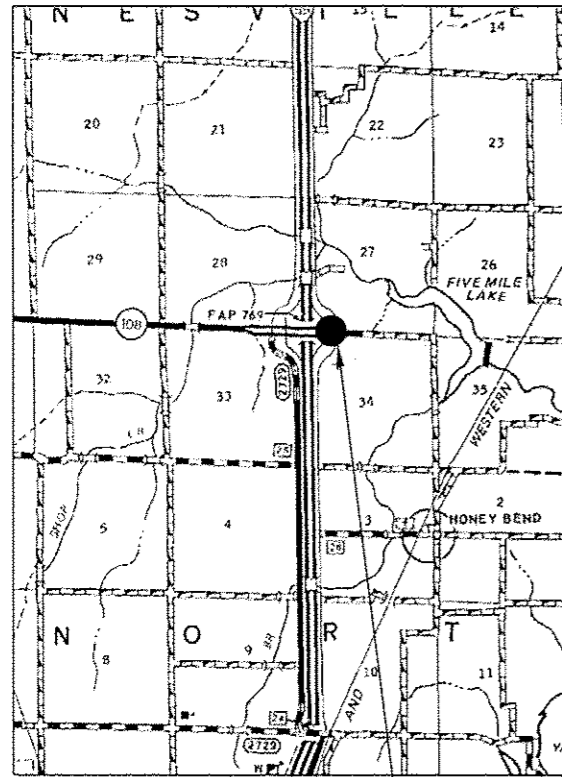
FILE NAME *	USER NAME * #USER*	DESIGNED -	REVISED -
#FILE#		DRAWN -	REVISED -
		CHECKED -	REVISED -
Default		DATE -	REVISED -
	PLOT SCALE * #SCALE*		
	PLOT DATE * #DATE*		

STATE OF ILLINOIS
DEPARTMENT OF TRANSPORTATION

PLAN	
SCALE:	SHEET OF SHEETS STA. TO STA.

RTE.	SECTION	COUNTY	TOTAL SHEETS	SHEET NO.
*	D6 PATCHING 2015	MONT. SANG.	8	4
CONTRACT NO. 72H79				
ILLINOIS FED. AID PROJECT				

*FAT 55, FAU 7996, YAP 325 I-55 @ IL 108, I-55 @ EAST LAKE DRIVE, I-55 @ IL 161



LOCATION #2



FILE NAME *
S:\CONTRMINT_CAD\72H79-FA155FAU 7998F

USER NAME * aherptd
P 325-D6 PATCHING 2015\0672H86-aherptd
PLOT SCALE * 1:8039 / 1" = 30'
PLOT DATE * Apr-03-2015 11:08:06AM

DESIGNED -
DRAWN -
CHECKED -
DATE -

REVISED -
REVISED -
REVISED -
REVISED -

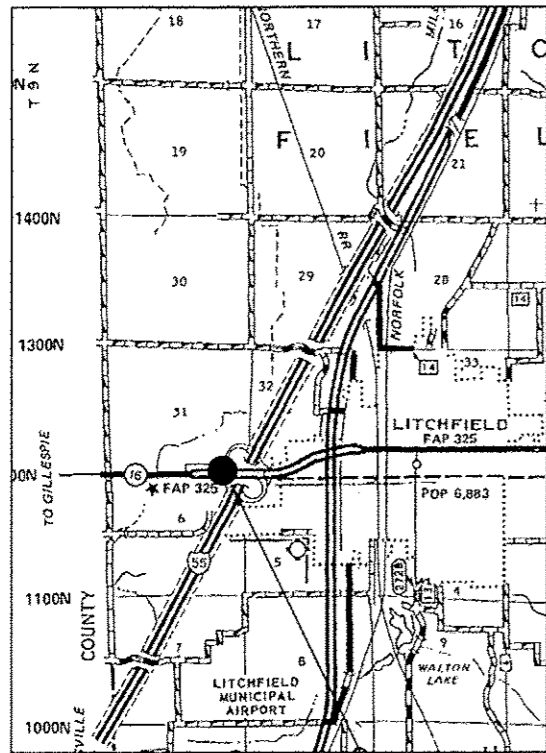
STATE OF ILLINOIS
DEPARTMENT OF TRANSPORTATION

PLAN

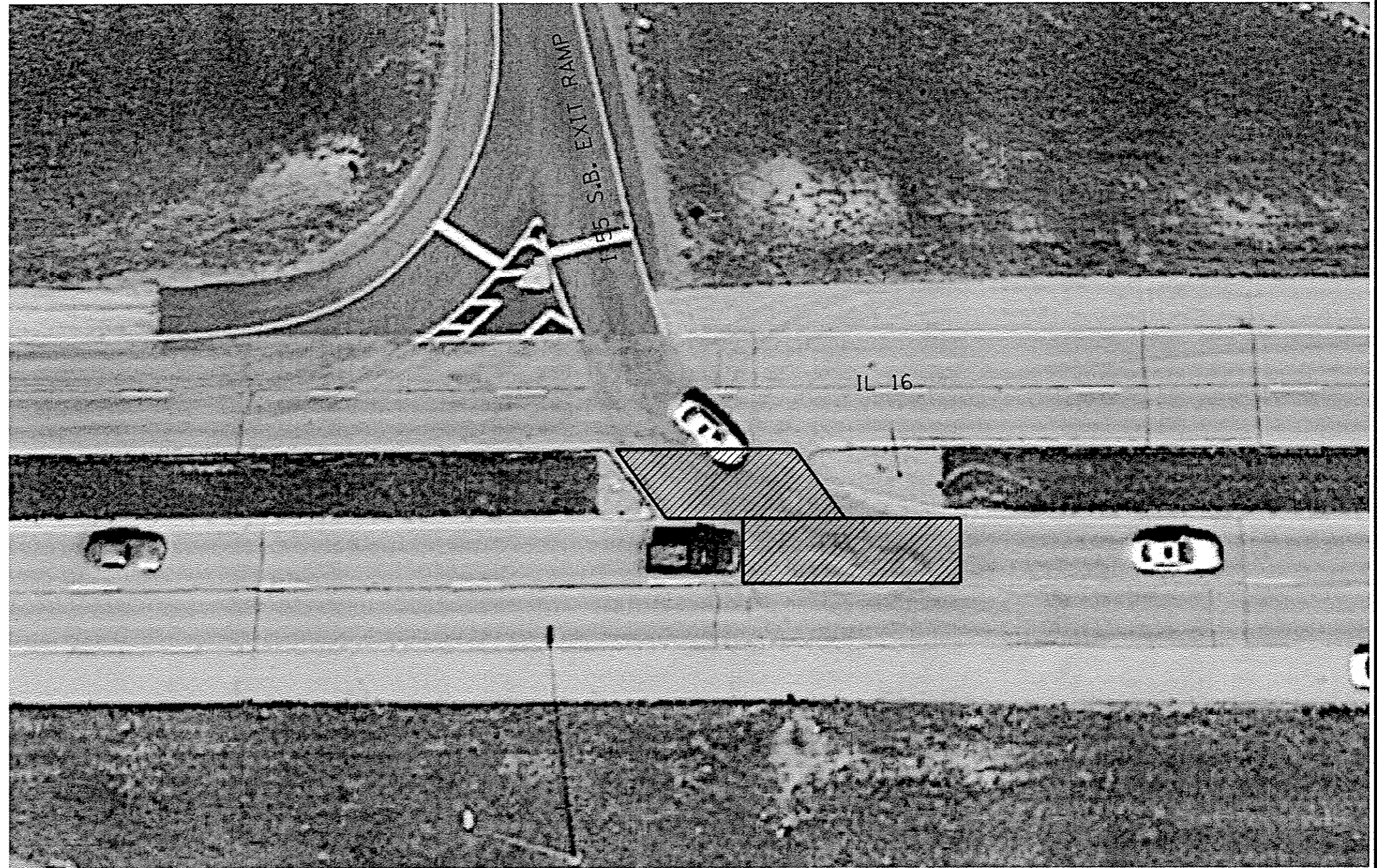
SCALE: SHEET OF SHEETS STA. TO STA.

RTE.	SECTION	COUNTY	TOTAL SHEETS	SHEET NO.
*	D6 PATCHING 2015	MONT., SANG.	8	5
CONTRACT NO. 72H79				
ILLINOIS FED. AID PROJECT				

*FAT 55, FAU 1998, FAP 325 I-55 & IL 108, I-55 @ EAST LAKE DRIVE, I-55 @ IL 160

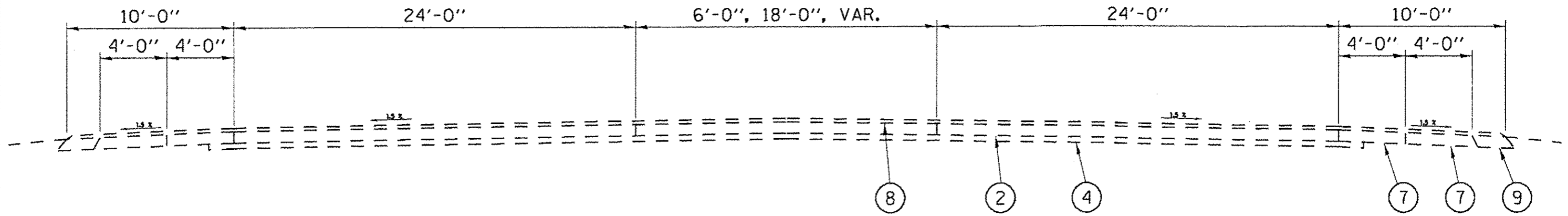


LOCATION #3



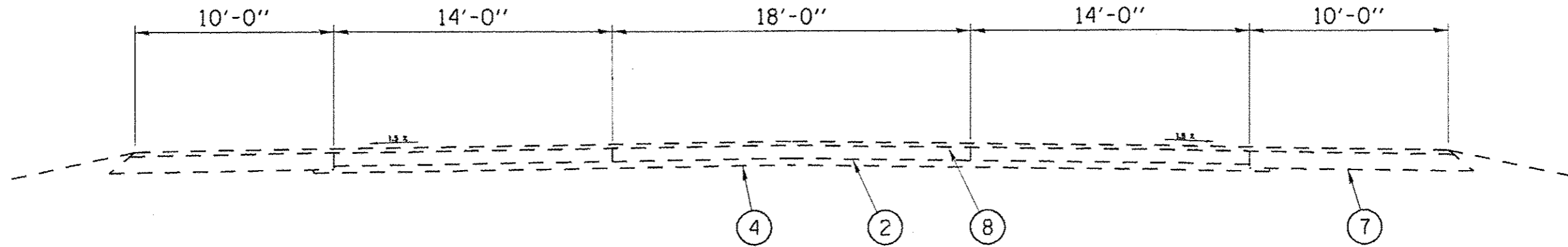
FILE NAME #	USER NAME # USER#	DESIGNED -	REVISED -	STATE OF ILLINOIS DEPARTMENT OF TRANSPORTATION	PLAN			RTE.	SECTION	COUNTY	TOTAL SHEETS	SHEET NO.	
#FILE#		DRAWN -	REVISED -		SCALE#	SHEET	OF	SHEETS	STA.	TO STA.	ILLINOIS FED. AID PROJECT		
Default		CHECKED -	REVISED -										
		DATE -	REVISED -										

*FAI 55, FAU 7998, FAP 325 (I-55 @ IL 108, I-55 @ EAST LAKE DRIVE, I-55 @ IL 16)



TYPICAL SECTION

LOCATION #1
EAST LAKE DRIVE

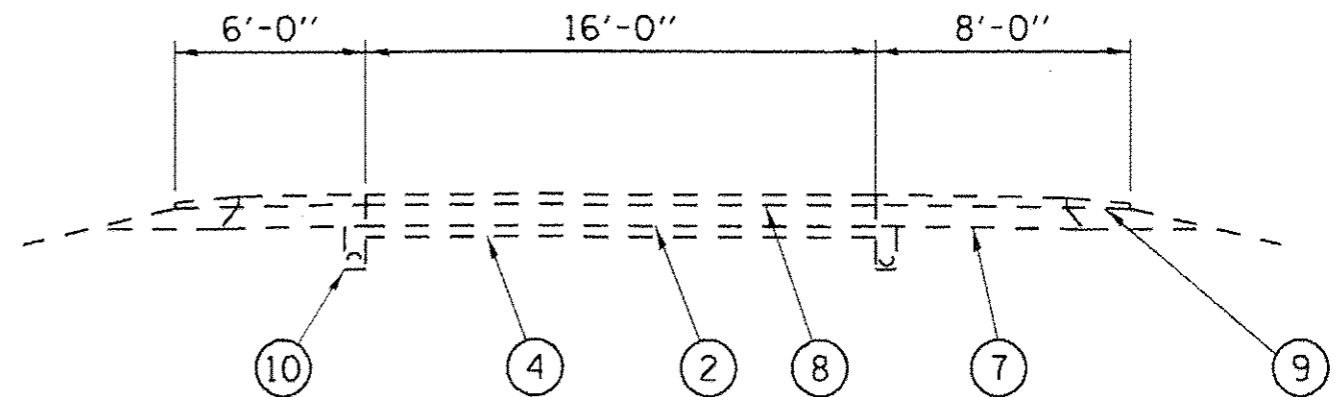


TYPICAL SECTION

LOCATION #2
IL 108

LEGEND

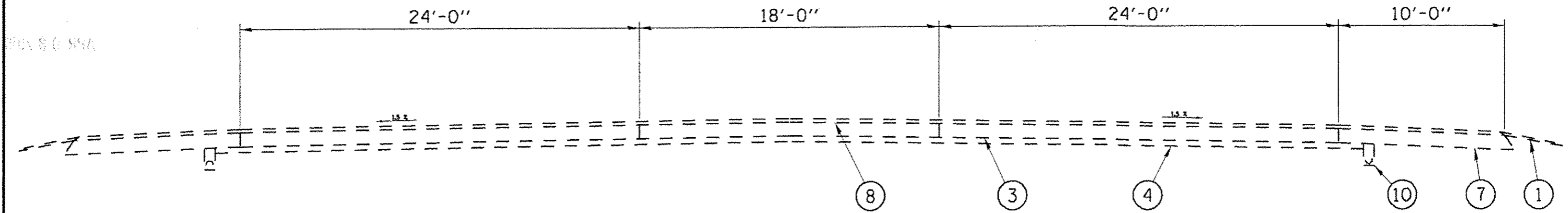
- ① EXIST P.C.C. PAVEMENT (9-6-9)
- ② EXIST. P.C.C. PAVEMENT 8"
- ③ EXIST. P.C.C. PAVEMENT 10"
- ④ EXIST. STABILIZED SUB-BASE 4"
- ⑤ EXIST. 3/4" SMOOTH BAR
- ⑥ EXIST. 1/2" TIE BAR
- ⑦ EXIST. H.M.A. SHOULDER
- ⑧ EXIST. H.M.A. SURFACE
- ⑨ EXIST. AGGREGATE SHOULDER
- ⑩ EXIST. PIPE UNDERDRAIN



TYPICAL SECTION

LOCATION #2
I-55 • IL 108 RAMP

FILE NAME *	USER NAME * shorptd	DESIGNED -	REVISED -	STATE OF ILLINOIS DEPARTMENT OF TRANSPORTATION	PLAN				RTE.	SECTION	COUNTY	TOTAL SHEETS	SHEET NO.		
S:\CONTRACT\MNT_CAD\72H79-FAI55FAU 7998P	P 325-D6 PATCHING 2015\062H68-ahx-plans.dwg	DRAWN -	REVISED -		SCALE:	SHEET	OF	SHEETS	STA.	TO STA.	-	D6 PATCHING 2015	MONT., SANG.	8	7
Default	PLOT SCALE = 1:8039 / in.	CHECKED -	REVISED -		CONTRACT NO. 72H79										
	PLOT DATE = Apr-03-2015 11:09:43AM	DATE -	REVISED -		<small>ILLINOIS FED. AID PROJECT</small>										



TYPICAL SECTION

LOCATION #3
IL 16

LEGEND

- ① EXIST P.C.C. PAVEMENT (9-6-9)
- ② EXIST. P.C.C. PAVEMENT 8"
- ③ EXIST. P.C.C. PAVEMENT 10"
- ④ EXIST. STABILIZED SUB-BASE 4"
- ⑤ EXIST. 3/4" SMOOTH BAR
- ⑥ EXIST. 1/2" TIE BAR
- ⑦ EXIST. H.M.A. SHOULDER
- ⑧ EXIST. H.M.A. SURFACE
- ⑨ EXIST. AGGREGATE SHOULDER
- ⑩ EXIST. PIPE UNDERDRAIN

FILE NAME *	USER NAME * shorptd	DESIGNED -	REVISED -	STATE OF ILLINOIS DEPARTMENT OF TRANSPORTATION	PLAN		RTE.	SECTION	COUNTY	TOTAL SHEETS	SHEET NO.
SA\CONTRMINT_CAD\72479-FAISSFAU 7998P	P 325-DB PATCHING 2015\0572H66-shr-plans.dwg	DRAWN -	REVISED -				•	DB PATCHING 2015	MONT., SANG.	B	B
Default	PLOT SCALE * 1/8000 1/4 in.	CHECKED -	REVISED -		SCALE:	SHEET	OF	SHEETS	STA.	TO STA.	CONTRACT NO. 72479
	PLOT DATE * Apr-03-2015 11:09:00AM	DATE -	REVISED -								ILLINOIS FED. AID PROJECT