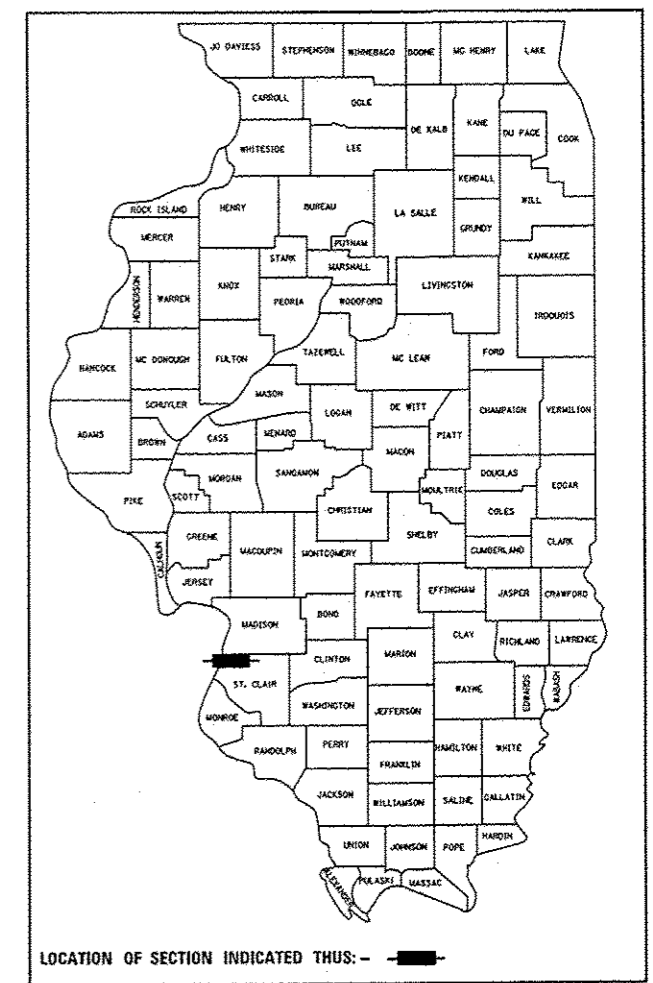


F.A.I. RTE.	SECTION	COUNTY	TOTAL SHEETS	SHEET NO.
•	82-2HB-1-P	ST CLAIR	9	1
		ILLINOIS	CONTRACT NO. 76662	

• 55/64

D-98-060-13



06-12-2015 LETTING ITEM 121

STATE OF ILLINOIS
DEPARTMENT OF TRANSPORTATION
DIVISION OF HIGHWAYS

**PROPOSED
HIGHWAY PLANS**

FAI ROUTE 5564 (I-55/64)
SECTION 82-2HB-1-P

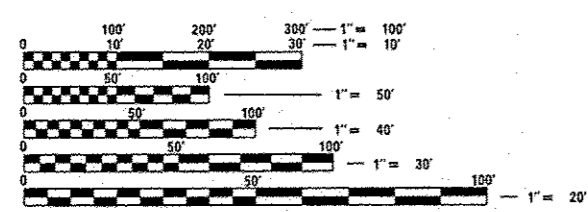
BRIDGE PAINTING IL 3 (ST. CLAIR AVE)
OVER FAI 55/64
ST CLAIR COUNTY

C-98-063-13

FOR INDEX OF SHEETS, SEE SHEET NO. 2

ADT	
ST CLAIR AVE	
2015 ADT= 6500 (ACTUAL)	
2035 ADT= 6700 (ESTIMATED)	
SU= 5.9% MU= 5.2%	
I-64 EB	
2015 ADT= 30100 (ACTUAL)	
2035 ADT= 36700 (ESTIMATED)	
SU= 2.0% MU= 5.0%	
I-55 EB	
2015 ADT= 29400 (ACTUAL)	
2035 ADT= 35900 (ESTIMATED)	
SU= 3.0% MU= 12.1%	

SN 082-0099
LAT: 38°37'57.57"
LONG: 90°08'44.79"

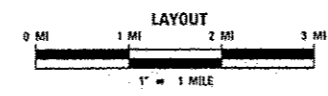
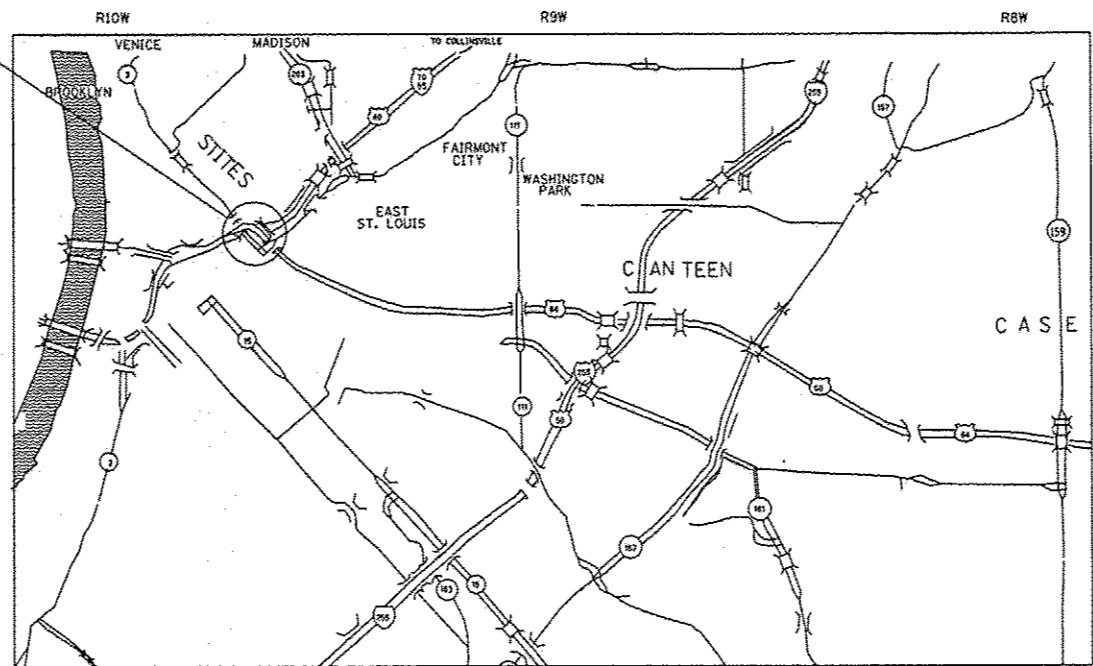


FULL SIZE PLANS HAVE BEEN PREPARED USING STANDARD ENGINEERING SCALES. REDUCED SIZED PLANS WILL NOT CONFORM TO STANDARD SCALES. IN MAKING MEASUREMENTS ON REDUCED PLANS, THE ABOVE SCALES MAY BE USED.

J.U.L.I.E.
JOINT UTILITY LOCATION INFORMATION FOR EXCAVATION
1-800-892-0123
OR 811

PROJECT ENGINEER: TIM PADGETT : 618-346-3325
PROJECT MANAGER PHILLIP COPPERNOLL : 618-346-3980

CONTRACT NO. 76662



GROSS LENGTH = 177.15 FT. = 0.034 MILE
NET LENGTH = 177.15 FT. = 0.034 MILE

STATE OF ILLINOIS
DEPARTMENT OF TRANSPORTATION
DIVISION OF HIGHWAYS

SUBMITTED *March 24, 2015*

Jeffrey Z...
DEPUTY DIRECTOR OF HIGHWAYS, REGION ENGINEER

May 8, 2015
D. Baranzelli, P.E.
ENGINEER OF DESIGN AND ENVIRONMENT

May 8, 2015
Chris...
DIRECTOR OF HIGHWAYS, CHIEF ENGINEER

PRINTED BY THE AUTHORITY
OF THE STATE OF ILLINOIS

INDEX OF SHEETS

- 1 COVER SHEET
- 2 INDEX OF SHEETS, HIGHWAY STANDARDS, COMMITMENTS & GENERAL NOTES
- 3 SUMMARY OF QUANTITIES
- 4 EXISTING STRUCTURE DETAILS
- 5-6 FRAMING AND EXISTING STRUCTURE DETAILS
- 7 EXISTING STRUCTURE DETAILS
- 8-9 EXISTING BEARING DETAILS

STANDARDS

- 000001-06
- 001006
- 701101-04
- 701106-02
- 701400-08
- 701401-09
- 701411-09
- 701428
- 701446-06
- 701606-10
- 701701-09
- 701801-05
- 701901-04

COMMITMENTS

NONE

GENERAL NOTES

1. ILLINOIS STATE LAW REQUIRES A 48-HOUR NOTICE TO BE GIVEN TO UTILITIES BEFORE DIGGING. FIELD MARKING OF FACILITIES MAY BE OBTAINED BY CONTACTING J.U.L.I.E (1-800-892-0123 OR 811) OR FOR NON-MEMBERS, THE UTILITY COMPANY DIRECTLY.
2. UTILITY INTERFERENCES ARE NOT ANTICIPATED ON THIS CONTRACT. IT SHALL BE THE CONTRACTOR'S RESPONSIBILITY TO COORDINATE HIS CONSTRUCTION ACTIVITIES WITH THE VARIOUS UTILITY OWNERS. ALL POTENTIAL CONFLICTS SHALL BE INVESTIGATED AND REMEDIAL ACTION TAKEN PRIOR TO INTERRUPTION OF THE CONTRACTOR'S PROGRESS. NO ADDITIONAL COST SHALL BE ADDED TO THE CONTRACT RESULTING FROM UTILITY CONFLICTS.
3. A MINIMUM OF TWO AIR MONITORS WILL BE REQUIRED AT SN 082-0099 TO MONITOR ABRASIVE BLASTING OPERATION, SEE SPECIAL PROVISIONS FOR "CONTAINMENT AND DISPOSAL OF LEAD PAINT CLEANING RESIDUES."
4. THE SSPC-OP1 AND SSPC-OP2 CERTIFICATIONS WILL BE REQUIRED FOR THE BRIDGE.
5. CLEANING AND PAINTING OF THE EXISTING STRUCTURAL STEEL SHALL BE AS SPECIFIED IN THE SPECIAL PROVISION FOR "CLEANING AND PAINTING EXISTING STEEL STRUCTURES". ALL EXISTING STEEL SHALL BE CLEANED PER NEAR WHITE BLAST CLEANING- SSPC-SP10. ALL EXISTING STEEL SHALL BE PAINTED ACCORDING TO THE REQUIREMENTS OF PAINT SYSTEM I-OZ/E/U. THE COLOR OF THE FINAL FINISH COAT FOR ALL STEEL SURFACES SHALL BE INTERSTATE GRAY, MUNSELL NO 5B 7/1.
6. ALL TURF AREA DISTURBED BY THE CONTRACTOR SHALL BE SEEDED WITH THE APPROPRIATE EROSION CONTROL AS DIRECTED BY THE RESIDENT ENGINEER/TECHNICIAN AT THE CONTRACTOR'S EXPENSE.
7. THE USE OF CONES SHALL NOT BE PERMITTED AT THIS LOCATION.
8. "ROAD CONSTRUCTION AHEAD" SIGNS SHALL BE PLACED AT EACH END OF THE PROJECT LOCATIONS AND ALL INTERSECTING SIDE ROADS AND WILL BE INCLUDED IN THE TRAFFIC CONTROL PAY ITEMS. ALL CONSTRUCTION SIGNS SHALL BE FLUORESCENT ORANGE. 48".
9. CHANGEABLE MESSAGE SIGN SHALL BE PLACED TWO (2) WEEKS PRIOR TO ANY LANE RESTRICTIONS AS DIRECTED BY THE RESIDENT ENGINEER/TECHNICIAN.
10. THE DEPARTMENT STRONGLY ENCOURAGES THE PRIME CONTRACTOR AND THEIR APPROVED SUB-CONTRACTORS TO HIRE MINORITY, WOMEN AND DISADVANTAGED INDIVIDUALS FROM ITS FEDERALLY FUNDED HIGHWAY CONSTRUCTION CAREERS TRAINING PROGRAM (HCCTP) TO HELP MEET WORKFORCE AND TRAINEE GOALS. THIS PROGRAM IS TRAINING MINORITIES, WOMEN AND DISADVANTAGED INDIVIDUALS IN HIGHWAY CONSTRUCTION-RELATED SKILLS, E.G., MATH FOR THE TRADES, JOB READINESS, TECHNICAL SKILLS COURSE WORK (CARPENTRY, CONCRETE FLATWORK, BLUEPRINT READING, SITE PLANS, SITE WORK, TOOLS USE, ETC.) AND OSHA 10 HOUR CERTIFICATION, TO PREPARE THEM FOR A CAREER IN THE HIGHWAY CONSTRUCTION TRADES. GRADUATES ARE WELL- TRAINED AND READY TO BECOME PRODUCTIVE ENTRY-LEVEL CONSTRUCTION WORKERS. CONTACT THE DISTRICT 8 EEO OFFICE AT 618-346-3360 AND/OR THE HCCTP COORDINATOR AT 618-874-6528 TO LEARN MORE ABOUT THE PROGRAM AND FOR ASSISTANCE IN MEETING WORKFORCE AND TRAINEE GOALS.

I-55 EB & I-64 EB PEAK HOUR RESTRICTIONS

MINIMUM NUMBER OF LANES TO BE LEFT OPEN SUNDAY TO SATURDAY *																									
	12:00 AM	1:00 AM	2:00 AM	3:00 AM	4:00 AM	5:00 AM	6:00 AM	7:00 AM	8:00 AM	9:00 AM	10:00 AM	11:00 AM	12:00 PM	1:00 PM	2:00 PM	3:00 PM	4:00 PM	5:00 PM	6:00 PM	7:00 PM	8:00 PM	9:00 PM	10:00 PM	11:00 PM	12:00 AM
I-55 EB (AFTER SPLIT)	1 LANE CLOSURE ALLOWED											ALL LANES OPEN						1 LANE CLOSURE ALLOWED							
I-64 EB (AFTER SPLIT)	1 LANE CLOSURE ALLOWED											ALL LANES OPEN						1 LANE CLOSURE ALLOWED							

*SEE SPECIAL PROVISIONS FOR ADDITIONAL PEAK HOUR RESTRICTIONS

FILE NAME =	USER NAME = ruholids	DESIGNED -	REVISED -	STATE OF ILLINOIS DEPARTMENT OF TRANSPORTATION	INDEX OF SHEETS, GENERAL NOTES, HIGHWAY STANDARD & COMMITMENTS				F.A.T. RTE.	SECTION	COUNTY	TOTAL SHEETS	SHEET NO.
o:\pvc\work\pvd\dot\ruholids\0345436\087062-shc-plan.dgn	DRAWN -	REVISED -											
PLOT SCALE = 100.0000' / 1"	CHECKED -	REVISED -	SCALE: N/A		SHEET NO. OF	SHEETS	STA.	TO STA.	FED. ROAD DIST. NO.	ILLINOIS FED. AID PROJECT			
PLOT DATE = 2/25/2015	DATE -	REVISED -									CONTRACT NO. 76662		

CODE NO.	ITEM	UNIT	TOTAL QUANTITY	100% STATE
				CONSTR. CODE
				URBAN
				BRIDGE
				0014
				082-0099
67100100	MOBILIZATION	L SUM	1	1
70100205	TRAFFIC CONTROL AND PROTECTION, STANDARD 701401	EACH	1	1
70100420	TRAFFIC CONTROL AND PROTECTION, STANDARD 701411	EACH	1	1
70100430	TRAFFIC CONTROL AND PROTECTION, STANDARD 701446	EACH	1	1
70102635	TRAFFIC CONTROL AND PROTECTION, STANDARD 701701	L SUM	1	1
70102640	TRAFFIC CONTROL AND PROTECTION, STANDARD 701801	L SUM	1	1
70106800	CHANGEABLE MESSAGE SIGN	CAL MO	2	2
70200100	NIGHTTIME WORK ZONE LIGHTING	L SUM	1	1
X 7010410	SPEED DISPLAY TRAILER	CAL MO	3	3
Z0007101	CONTAINMENT AND DISPOSAL OF LEAD PAINT CLEANING RESIDUES NO. 1	L SUM	1	1
Z0010501	CLEANING AND PAINTING STEEL BRIDGE NO. 1	L SUM	1	1

11

FILE NAME *	USER NAME = rnhallid	DESIGNED -	REVISED -	STATE OF ILLINOIS DEPARTMENT OF TRANSPORTATION	SUMMARY OF QUANTITIES STRUCTURE NO. 082-0099	F.A.I. R.T.E.	SECTION	COUNTY	TOTAL SHEETS	SHEET NO.	
o:\p\work\p\dot\rnhallid\0345438\087	g62-sht-plan.dgn	DRAWN -	REVISED -			*	82-2HB-1-P	ST CLAIR	9	3	
	PLOT SCALE = 100.0000' / 1" / 12	CHECKED -	REVISED -			SCALE: N/A SHEET NO. OF SHEETS STA. TO STA.					
	PLOT DATE = 2/24/2015	DATE -	REVISED -			FED. ROAD DIST. NO. ILLINOIS FED. AID PROJECT CONTRACT NO. 76662					

Benchmark
 RFS5: Chiselled "X" in rim of manhole at
 St. Clair Ave. and Katherine Dunham Place
 St. Clair Sta 54+02 13' Rt. Elev. 413.21

Existing Structure:
 Bridge No. 082-0099 was originally constructed in 1959. The Structure is a 2 span
 continuous steel multi girder bridge with floor beams and a reinforced concrete deck.
 The Bridge is approximately 175.65' long (C to C Bearings) and varies in width 92'
 to 108.22' (out to out of deck). Traffic to be maintained during the rehabilitation using
 stage construction.

STATE OF ILLINOIS
 DEPARTMENT OF TRANSPORTATION

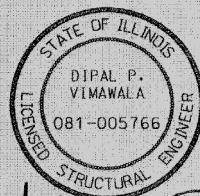
DESIGN SPECIFICATIONS
 2002 AASHTO Standard Specification for
 Highway Bridges

DESIGN STRESSES

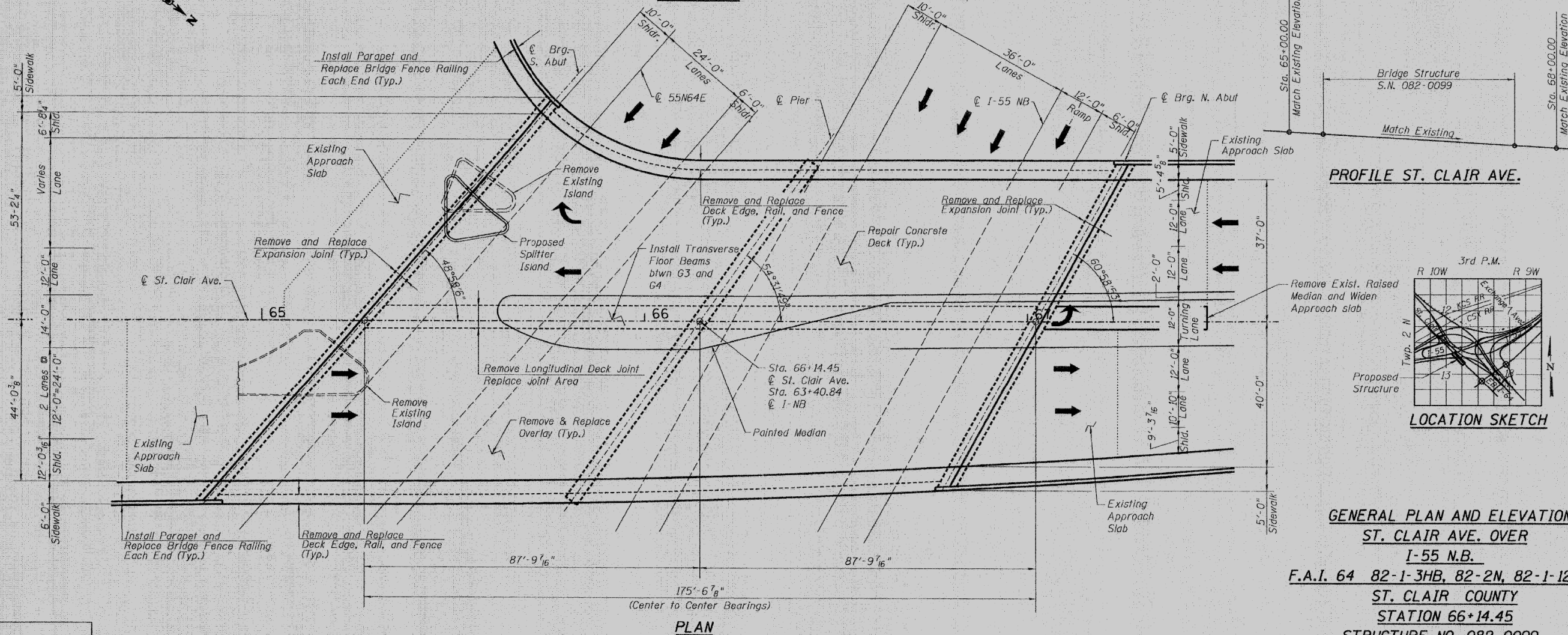
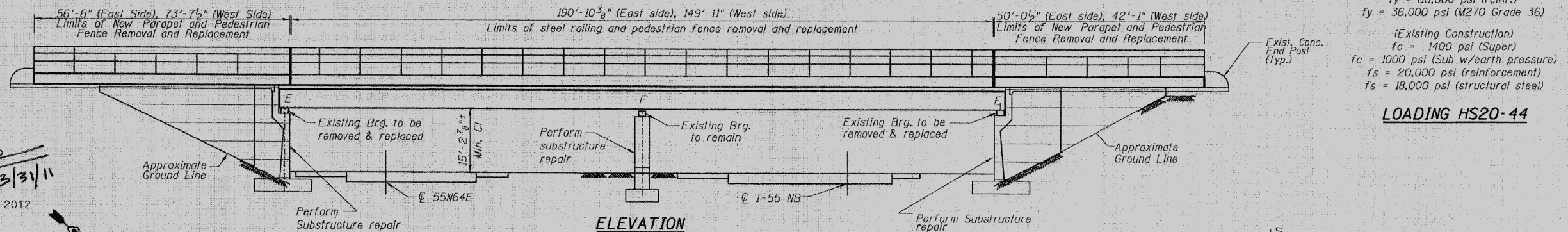
(New Construction)
 $f'_c = 3500$ psi
 $f_y = 60,000$ psi (reinf.)
 $f_y = 36,000$ psi (M270 Grade 36)

(Existing Construction)
 $f_c = 1400$ psi (Super)
 $f_c = 1000$ psi (Sub w/earth pressure)
 $f_s = 20,000$ psi (reinforcement)
 $f_s = 18,000$ psi (structural steel)

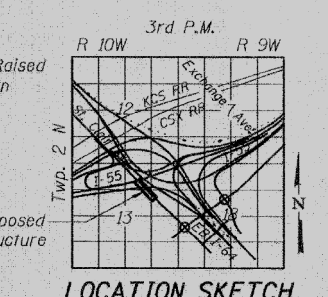
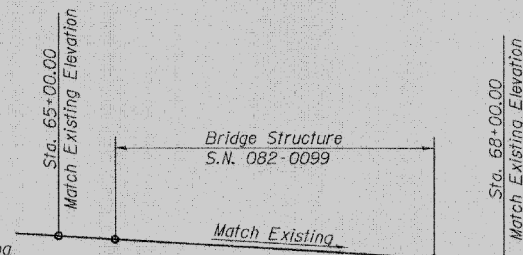
LOADING HS20-44



EXPIRATION DATE: 11-30-2012



PROFILE ST. CLAIR AVE.

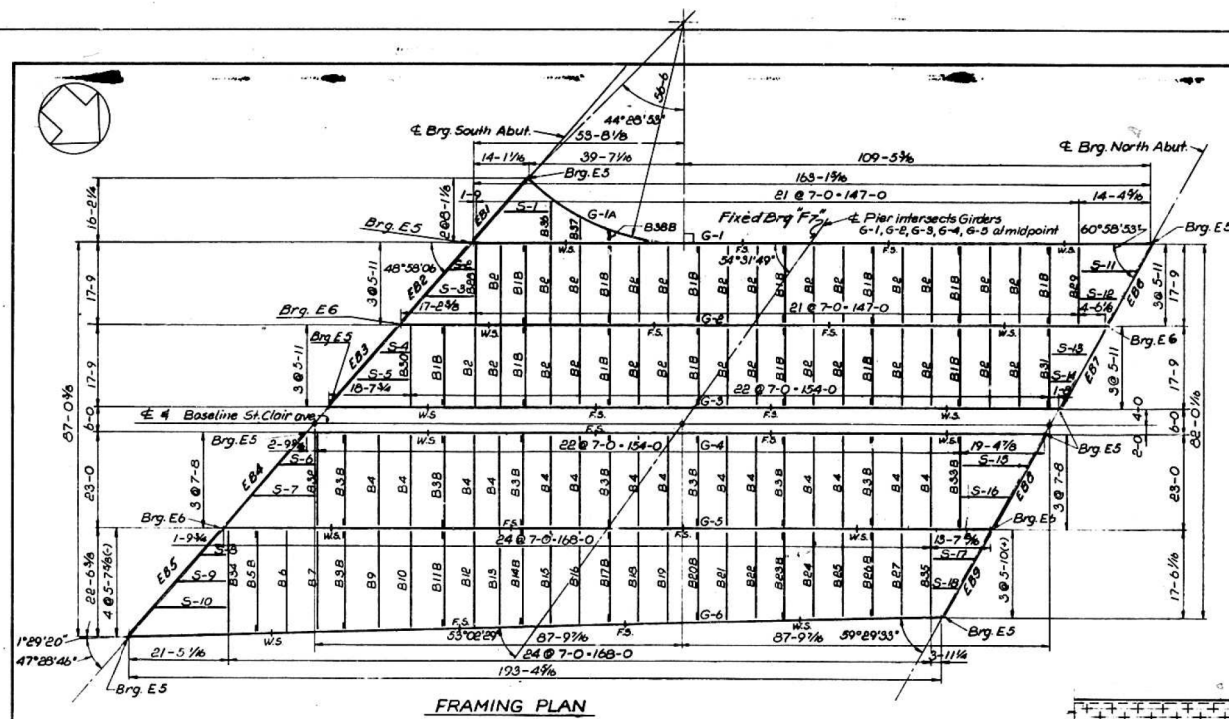


**GENERAL PLAN AND ELEVATION
 ST. CLAIR AVE. OVER
 I-55 N.B.**
 F.A.I. 64 82-1-3HB, 82-2N, 82-1-12RS
 ST. CLAIR COUNTY
 STATION 66+14.45
 STRUCTURE NO. 082-0099

DESIGNED - DEV
CHECKED - EJO
DRAWN - JHR
CHECKED - EJO

FOR INFORMATION ONLY

SHEET NO.	F.A.I. RTE.	SECTION	COUNTY	TOTAL SHEETS	SHEET NO.
S1	64	82-1-3HB, 82-2N, 82-1-12RS	ST. CLAIR	352	239
S20 SHEETS	F.A.U. 9166 / F.A.U. 9180		CONTRACT NO. 76C51		
FED. ROAD DIST. NO.		ILLINOIS FED. AID PROJECT			

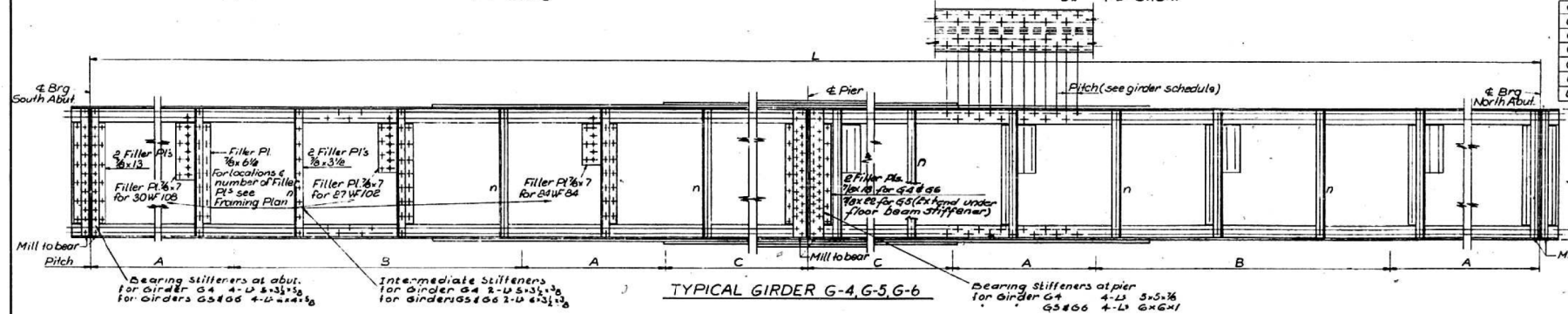
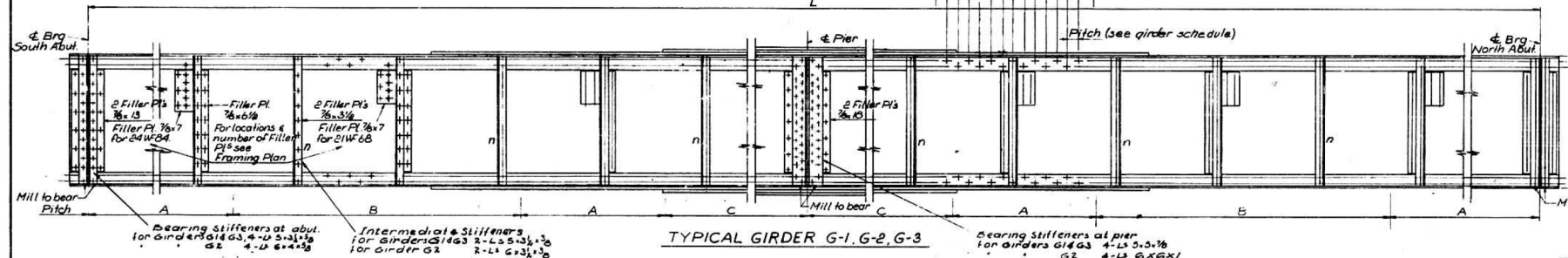


Note: Max. intermediate stiffener spacing 3'-6"

Mark	L	Main Material	Pitch
G-1	163-19 1/2	1 Web Pl. 34 x 7/8 - 4 L ^s 6 x 6 x 7/8 Cover Pl's 2-14 x 1/2 x 12 1/2 2-14 x 1/2 x 11 1/2 2-14 x 1/2 x 14	A: 16-0 @ 4' B: 33-6 @ 5' C: 16-0 @ 5'
G-1A	36-7 1/2	1 Web Pl. 34 x 7/8 - 4 L ^s 6 x 6 x 7/8 Cover Pl's 2-14 x 1/2 x 12 1/2 2-14 x 1/2 x 11 1/2 2-14 x 1/2 x 14	36-6 @ 5'
G-2	168-0 1/2	1 Web Pl. 34 x 7/8 - 4 L ^s 6 x 6 x 7/8 Cover Pl's 2-14 x 1/2 x 12 1/2 2-14 x 1/2 x 11 1/2 2-14 x 1/2 x 14	A: 16-0 @ 3' B: 34-0 @ 4' C: 16-0 @ 2 1/4'
G-3	174-3 3/4	1 Web Pl. 34 x 7/8 - 4 L ^s 6 x 6 x 7/8 Cover Pl's 2-14 x 1/2 x 12 1/2 2-14 x 1/2 x 11 1/2 2-14 x 1/2 x 14	A: 17-6 @ 4' B: 34-0 @ 4' C: 17-6 @ 5'
G-4	176-2 7/8	1 Web Pl. 34 x 7/8 - 4 L ^s 6 x 6 x 7/8 Cover Pl's 2-14 x 1/2 x 12 1/2 2-14 x 1/2 x 11 1/2 2-14 x 1/2 x 14	A: 17-6 @ 3 3/4' B: 35-0 @ 4 1/2' C: 17-6 @ 2 1/4'
G-5	183-5 1/8	1 Web Pl. 34 x 7/8 - 4 L ^s 6 x 6 x 7/8 Cover Pl's 2-14 x 1/2 x 12 1/2 2-14 x 1/2 x 11 1/2 2-14 x 1/2 x 14	A: 18-0 @ 2 3/4' B: 36-0 @ 5 1/2' C: 18-0 @ 1 3/4'
G-6	193-5 1/8	1 Web Pl. 34 x 7/8 - 4 L ^s 6 x 6 x 7/8 Cover Pl's 2-14 x 1/2 x 12 1/2 2-14 x 1/2 x 11 1/2 2-14 x 1/2 x 14	A: 19-0 @ 3 3/4' B: 39-6 @ 4 1/2' C: 19-0 @ 2 1/4'

Mark	L	Material
BIB & BE	17-9	21WF68
B3B & B4	23-0	27WF102
B5B	21-9 1/2	24WF84
B6	21-7 1/2	---
B7	21-5 1/2	---
B8B	21-3	---
B9	21-0 3/4	---
B10	20-10 3/4	---
B11B	20-8 3/4	---
B12	20-6 1/4	---
B13	20-4 1/4	---
B4B	20-1 1/2	24WF84
B15	19-11 1/2	24WF76
B16	19-9 1/2	---
B17B	19-7 1/2	---
B18	19-5 1/2	---
B19	19-2 1/2	---
B20B	19-0 3/4	---
B21	18-10 3/4	---
B22	18-8 3/4	---
B23B	18-6 3/4	---
B24	18-4	---
B25	18-1 1/2	---
B26B	17-11 1/2	---
B27	17-9 1/2	---
B28B & B29	17-9	24WF76
B30 & B31B	23-0	30WF102
B34	21-11 1/2	27WF102
B35	17-7 1/2	24WF76
B36	9-2 1/2	21WF68
B37	5-3 1/2	---
B38B	2-7 1/2	21WF68

ELEVATIONS - TOP OF GIRDERS @ BRGS.		
SOUTH ABUT.	PIER	NORTH ABUT.
G1A	412.69	B38B & B29
G1	414.00	B30 & B31B
G2	415.10	B34
G3	415.31	B35
G4	415.30	B36
G5	415.10	B37
G6	414.95	B38B



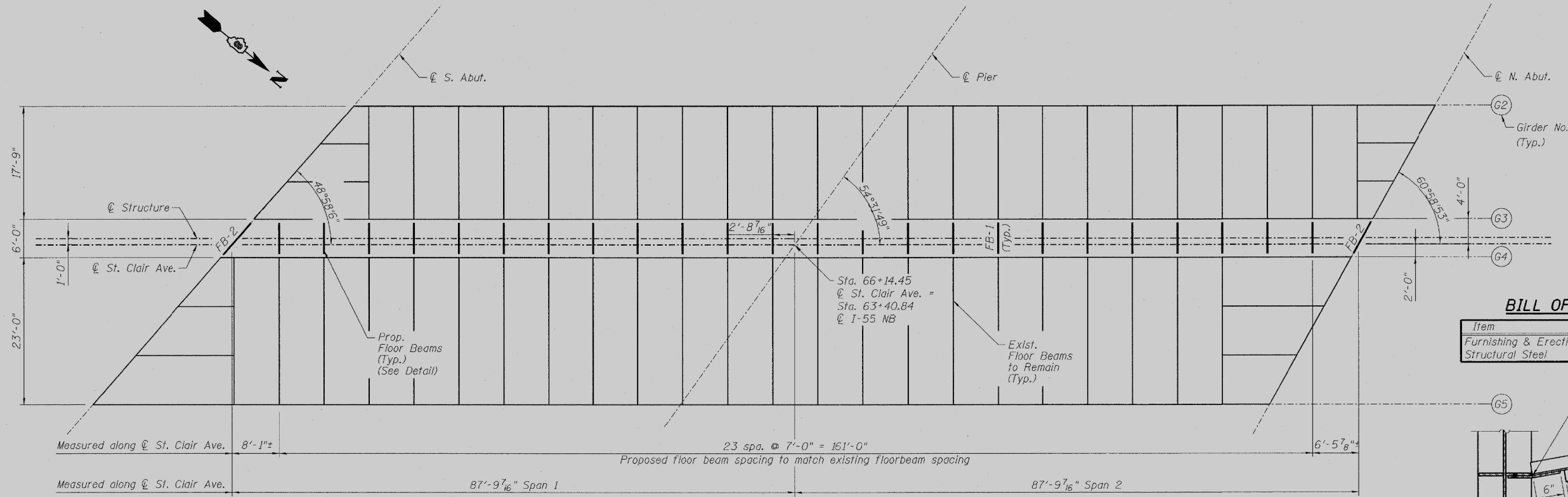
Elevs. given top of cover ds.
 STATE OF ILLINOIS
 DEPARTMENT OF PUBLIC WORKS & BLDGS.
 DIVISION OF HIGHWAYS &
 CITY OF EAST ST. LOUIS
EAST ST. LOUIS EXPRESSWAY
 ST. CLAIR AVE. OVER EAST BOUND EXPRESSWAY
 AND ROADWAY "R"
 FRAMING PLAN & STEEL DETAILS
 H. W. LOCHNER, INC.
 ENGINEERS
 DATE: MAY 1958 CHICAGO, ILLINOIS SHEET NO. 13

Designed by: B.S.T.
 Drawn by: E.A.
 Checked by: B.S.T.

FOR 'INFORMATION' ONLY

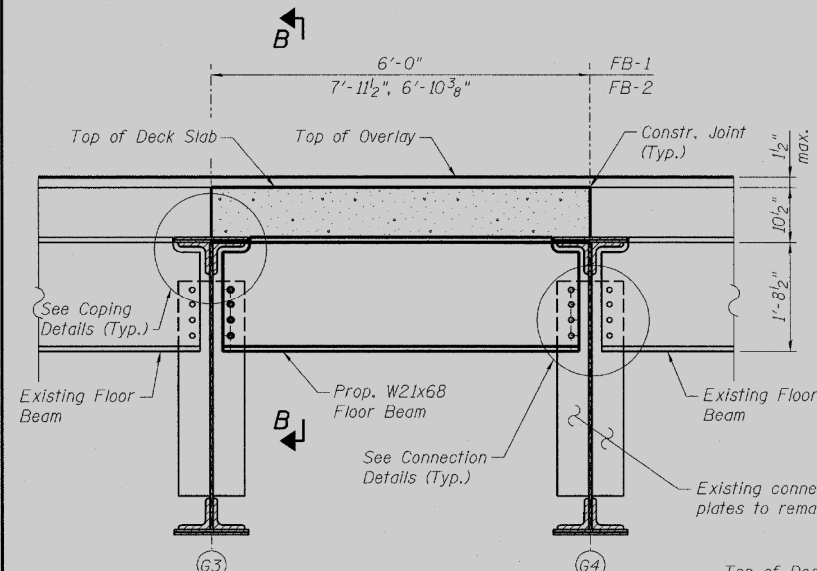
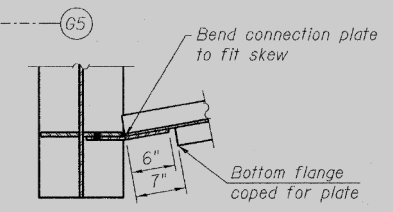
FOR INFORMATION ONLY

STATE OF ILLINOIS
DEPARTMENT OF TRANSPORTATION



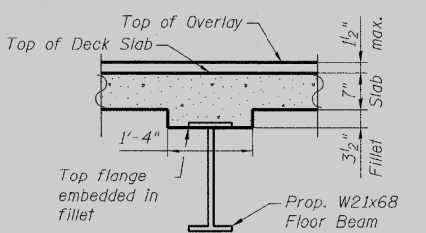
BILL OF MATERIAL

Item	Unit	Quantity
Furnishing & Erecting Structural Steel	Pound	10,740



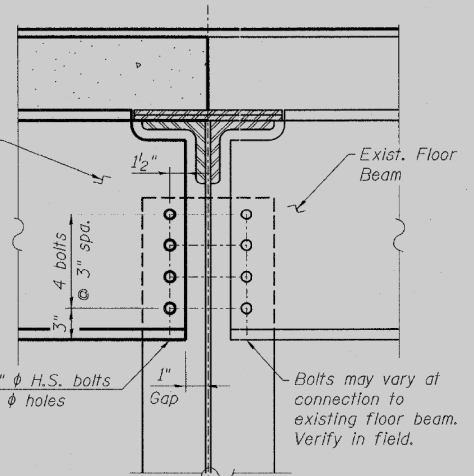
TYPICAL FLOOR BEAM DETAIL
FB-1 = (24 required)
FB-2 = (2 required)

DESIGNED	-	DEV
CHECKED	-	EJO
DRAWN	-	MRK
CHECKED	-	EJO



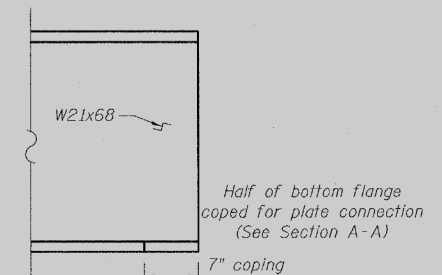
SECTION B-B

PARTIAL FRAMING PLAN

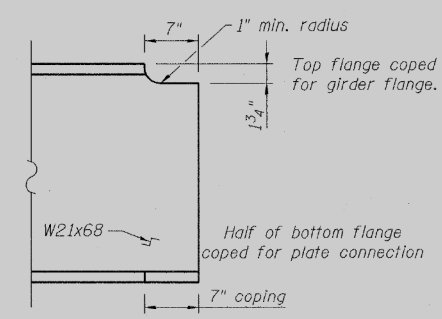


FLOOR BEAM CONNECTION DETAIL - FB-1

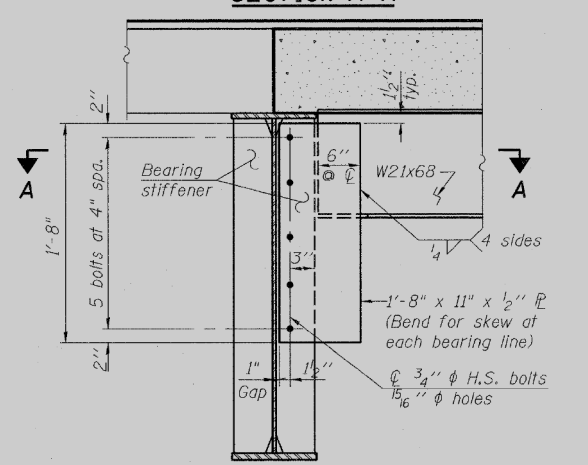
$\text{\textcircled{C}}$ 15/16" bolt holes in new floor beams shall be shop drilled. Field drill bolt holes in connection plates to ensure proper alignment. Drilling holes included in Furnishing and Erecting Structural Steel pay item. Two hardened washers required for each set of oversized holes.



END FLOOR BEAM COPING DETAIL - FB-2



FLOOR BEAM COPING DETAIL - FB-1



END FLOOR BEAM CONNECTION DETAIL - FB-2
 $\text{\textcircled{C}}$ 15/16" bolt holes in new floor beam connection plate shall be shop drilled. Field drill bolt holes in existing connection plate to ensure proper alignment. Drilling holes included in Furnishing and Erecting Structural Steel pay item. Two hardened washers required for each set of oversized holes.

FRAMING PLAN
STRUCTURE NO. 082-0099

SHEET NO. S14	F.A.I. RTE. 64	SECTION 82-1-3HB, 82-2N, 82-1-12RS	COUNTY ST. CLAIR	TOTAL SHEETS 352	SHEET NO. 252
S20 SHEETS	F.A.U. 9166 / F.A.U. 9180	CONTRACT NO. 76C51			
FED. ROAD DIST. NO.		ILLINOIS FED. AID PROJECT			

FILE NAME =	USER NAME = ruhollds	DESIGNED -	REVISED -
et:\pwork\pwork\ruhollds\d0345436\d87662-sht-plan.dgn		DRAWN -	REVISED -
PLOT SCALE = 100.0000' / 1in.		CHECKED -	REVISED -
PLOT DATE = 3/21/2015		DATE -	REVISED -

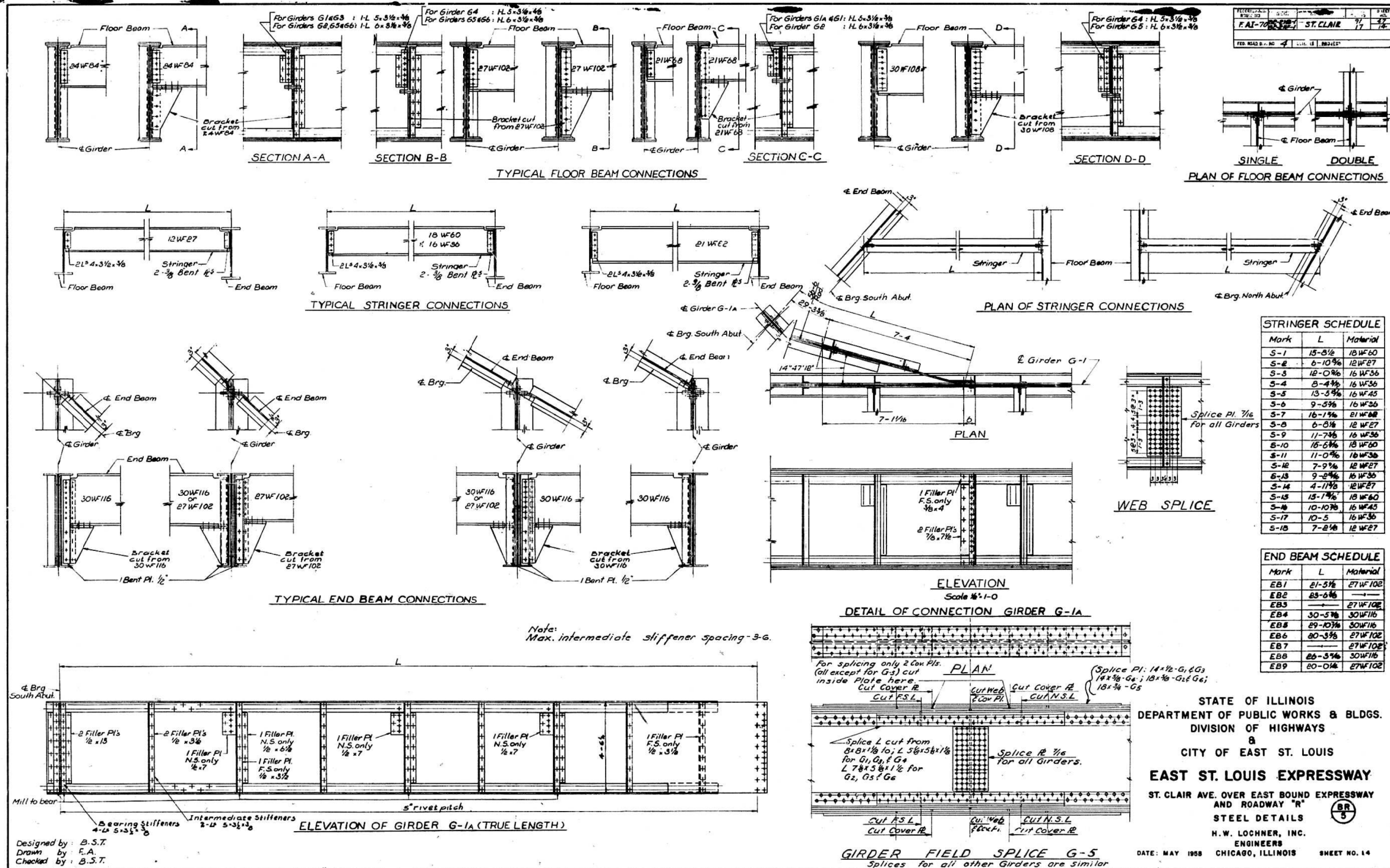
STATE OF ILLINOIS
DEPARTMENT OF TRANSPORTATION

EXISTING STRUCTURE DETAILS
STRUCTURE NO. 082-0099

SCALE: N/A SHEET NO. OF SHEETS STA. TO STA.

F.A.I. RTE.	SECTION	COUNTY	TOTAL SHEETS	SHEET NO.
64	82-2HB-1-P	ST CLAIR	9	6
FED. ROAD DIST. NO.		ILLINOIS FED. AID PROJECT		

FOR INFORMATION ONLY



STATE OF ILLINOIS
 DEPARTMENT OF PUBLIC WORKS & BLDGS.
 DIVISION OF HIGHWAYS
 &
 CITY OF EAST ST. LOUIS
EAST ST. LOUIS EXPRESSWAY
 ST. CLAIR AVE. OVER EAST BOUND EXPRESSWAY
 AND ROADWAY "R"
 STEEL DETAILS
 H. W. LOCHNER, INC.
 ENGINEERS
 CHICAGO, ILLINOIS

DATE: MAY 1958
 SHEET NO. 14



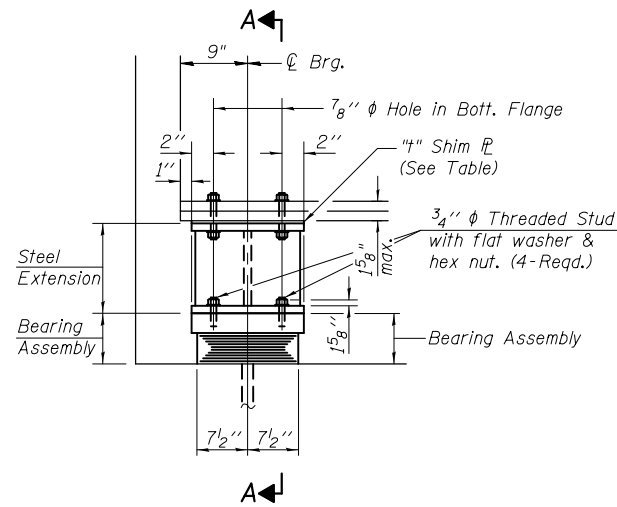
FILE NAME =	USER NAME = ruhollds	DESIGNED -	REVISED -
et:\pw\work\p\dtd\ruhollds\d0345436\d87662-sht-plan.dgn		DRAWN -	REVISED -
PLOT SCALE = 100.0000' / in.		CHECKED -	REVISED -
PLOT DATE = 3/21/2015		DATE -	REVISED -

STATE OF ILLINOIS
 DEPARTMENT OF TRANSPORTATION

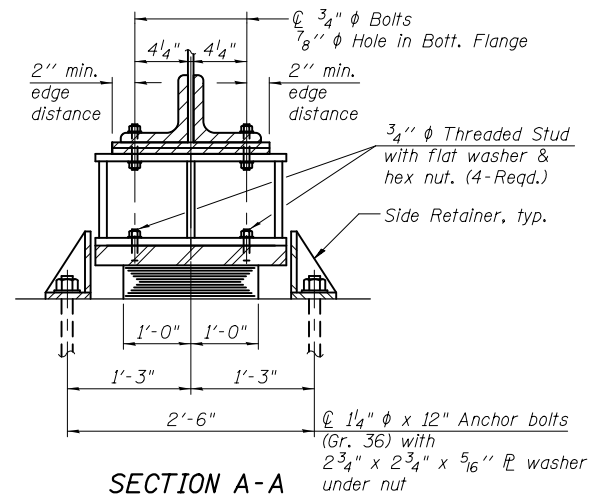
EXISTING STRUCTURE DETAILS
 STRUCTURE NO. 082-0099

SCALE: N/A SHEET NO. OF SHEETS STA. TO STA.

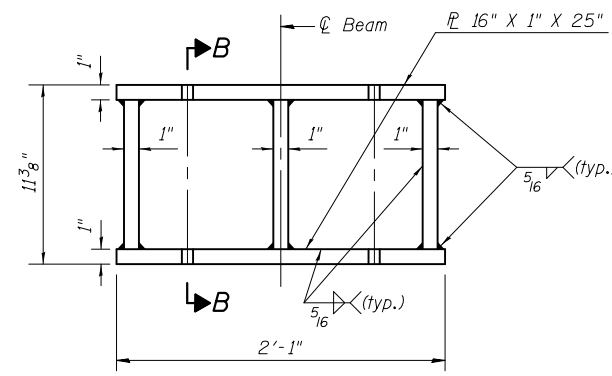
F.A.I. RTE.	SECTION	COUNTY	TOTAL SHEETS	SHEET NO.
ST. CLAIR	82-2HB-1-P	ST. CLAIR	9	7
CONTRACT NO. 76G62				
FED. ROAD DIST. NO.		ILLINOIS FED. AID PROJECT		



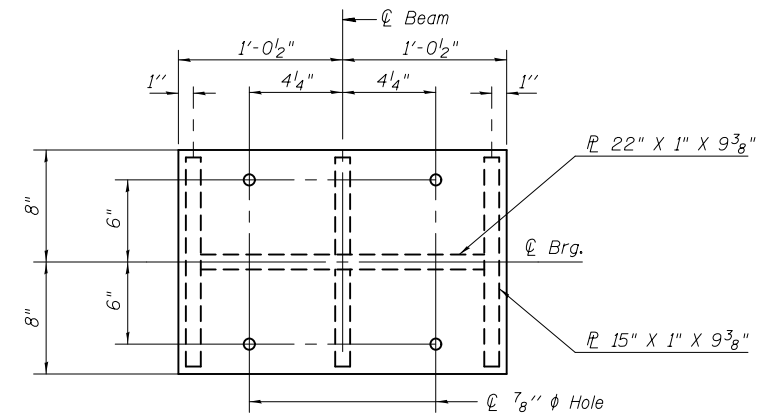
ELEVATION AT ABUT.



SECTION A-A

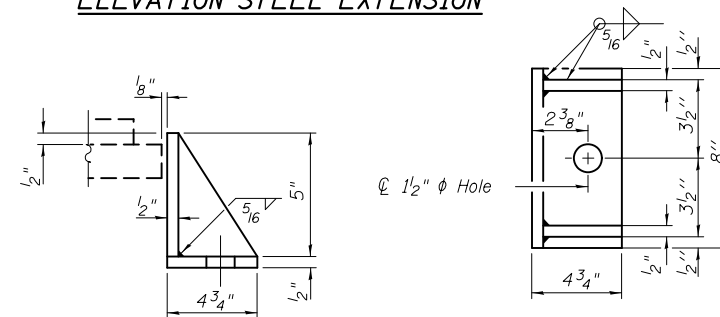


ELEVATION STEEL EXTENSION



PLAN STEEL EXTENSION

TYPE I ELASTOMERIC EXP. BRG.



SIDE RETAINER

Equivalent rolled angle with stiffeners will be allowed in lieu of welded plates.

Existing Beam	North Abutment Shim P., "t"	South Abutment Shim P., "t"
G-1	3/8"	1/8"
G-1A	-	1/8"
G-2	7/8"	5/8"
G-3	3/8"	1/8"
G-4	3/8"	1/8"
G-5	7/8"	5/8"
G-6	3/8"	1/8"

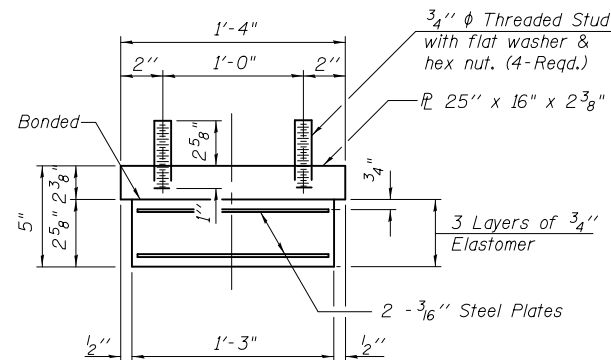
SHIM PLATE THICKNESS

REACTIONS FOR JACKING FORCES

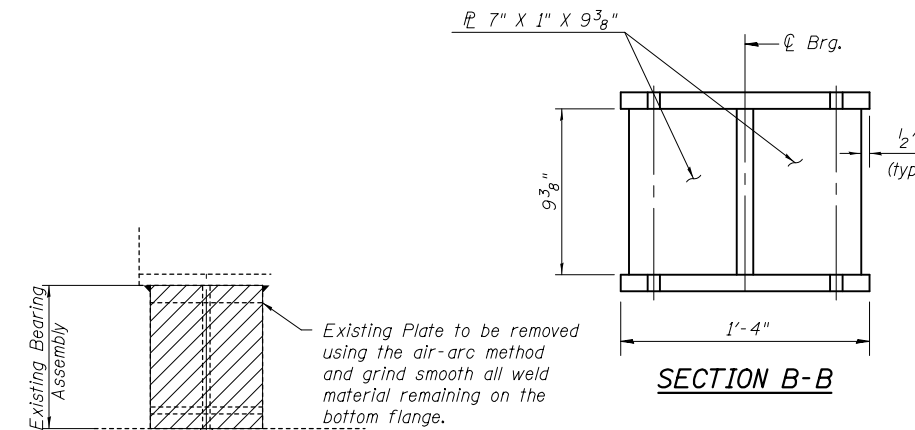
Location	DL (kips)	LL+I (kips)	Total (kips)
South Abutment	123.7	159.8	283.5
North Abutment	117.5	159.5	277.0

BILL OF MATERIAL

Item	Unit	Quantity
Elastomeric Bearing Assembly, Type I	Each	13
Jack and Remove Existing Bearings	Each	13
Anchor Bolts, 1/4" φ	Each	26



BEARING ASSEMBLY



SECTION B-B

EXISTING ABUTMENT BEARING REMOVAL DETAIL

(Existing pier bearings are to remain)

Existing Bearing Assembly

Existing Plate to be removed using the air-arc method and grind smooth all weld material remaining on the bottom flange.

Burn existing anchor bolts flush with existing concrete surface. Grind existing anchor bolt smooth and seal with epoxy. Cost is incidental to "Jack and Remove Existing Bearings".

EXPANSION BEARING DETAILS
STRUCTURE NO. 082-0099

FOR INFORMATION ONLY

