

STATE OF ILLINOIS
DEPARTMENT OF TRANSPORTATION
DIVISION OF HIGHWAYS

**PROPOSED
HIGHWAY PLANS**

FAP ROUTE 761 (IL 108)
SECTION (101,102)RS-3

CAPE SEAL
GREENE COUNTY

C-98-025-15

F.A.P. RTE.	SECTION	COUNTY	TOTAL SHEETS	SHEET NO.
761	(101,102)RS-3	GREENE	8	1
		ILLINOIS	CONTRACT NO. 76H73	

FOR INDEX OF SHEETS, SEE SHEET NO. 2

TRAFFIC DATA - FROM E OF ILLINOIS RIVER TO ELDRED

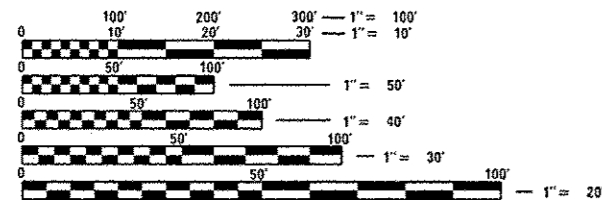
ADT 2015 = 500 (ESTIMATED)
ADT 2020 = 550 (ESTIMATED)
SU = 6.0%
MU = 14.0%

TRAFFIC DATA - FROM ELDRED TO W OF 11TH ST.

ADT 2015 = 1700 (ESTIMATED)
ADT 2020 = 1800 (ESTIMATED)
SU = 3.6%
MU = 1.2%

BRIDGE OMISSION
SN 031-0038
M.P. 2.00 - M.P. 2.03

PROJECT STARTS
M.P. 0.00
LAT: 39.300091
LONG: -90.604188

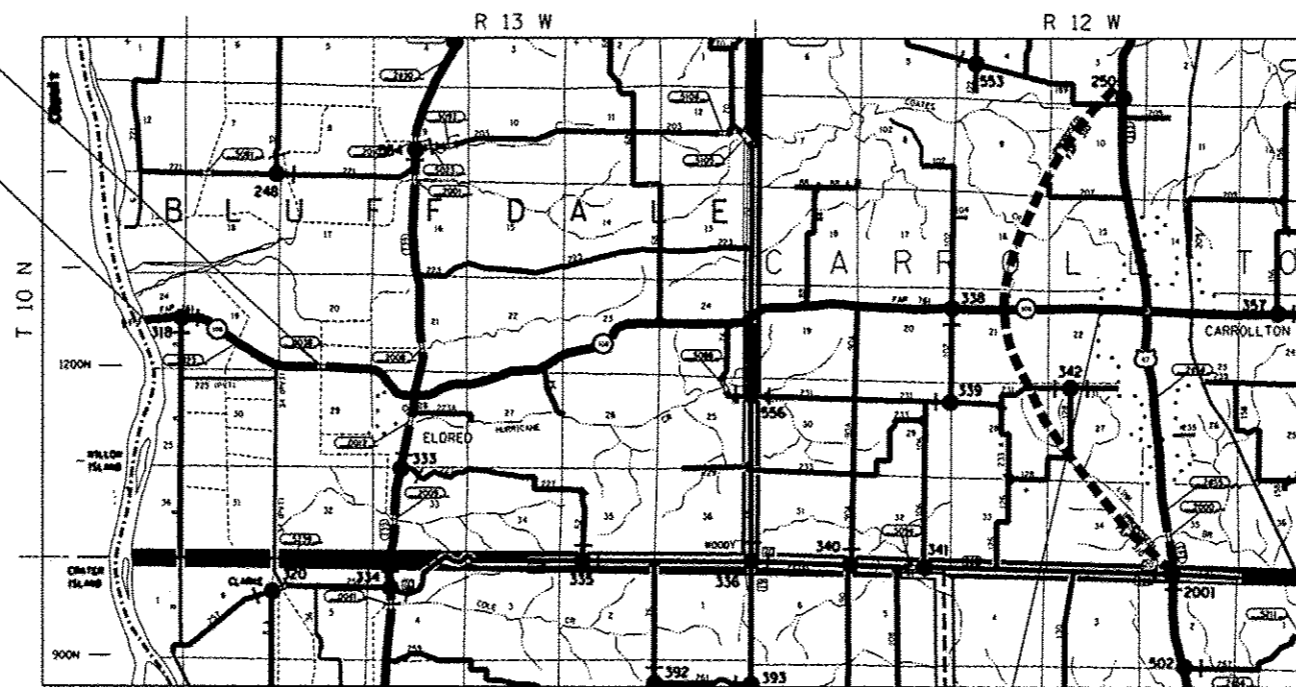


FULL SIZE PLANS HAVE BEEN PREPARED USING STANDARD ENGINEERING SCALES. REDUCED SIZED PLANS WILL NOT CONFORM TO STANDARD SCALES. IN MAKING MEASUREMENTS ON REDUCED PLANS, THE ABOVE SCALES MAY BE USED.

J.U.L.I.E.
JOINT UTILITY LOCATION INFORMATION FOR EXCAVATION
1-800-892-0123
OR 811

PROJECT ENGINEER: MICHAEL PRITCHETT (618)346-3180
DESIGNER: DIANA MURRAY (618)346-3454

CONTRACT NO. 76H73

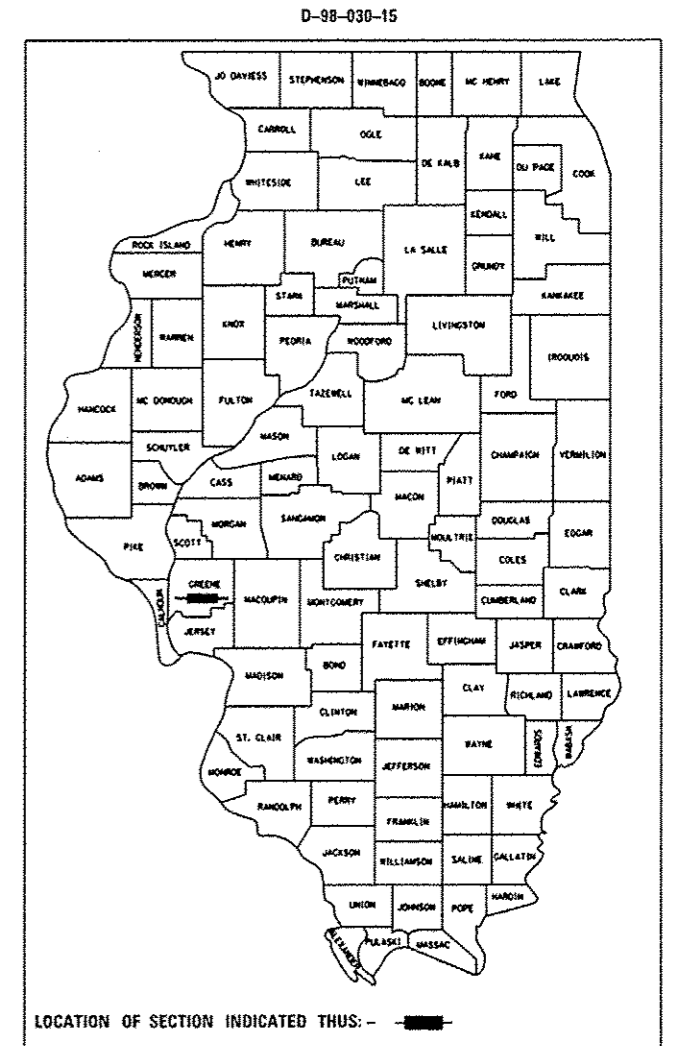


BLUFFDALE TOWNSHIP
CARROLLTON TOWNSHIP

NOT TO SCALE

PROJECT ENDS
M.P. 10.55
LAT: 39.302325
LONG: -90.420385

GROSS LENGTH = 55,704 FT. = 10.55 MILE
NET LENGTH = 55,559 FT. = 10.52 MILE



STATE OF ILLINOIS
DEPARTMENT OF TRANSPORTATION
DIVISION OF HIGHWAYS

SUBMITTED *March 20 15*
Jeffrey Z. Kovacs
DEPUTY DIRECTOR OF HIGHWAYS, REGION 5 ENGINEER

May 8 20 15
John D. Baranelli, P.E.
ENGINEER OF DESIGN AND ENVIRONMENT

May 8 20 15
Chris Osman, P.E.
DIRECTOR OF HIGHWAYS, CHIEF ENGINEER

PRINTED BY THE AUTHORITY
OF THE STATE OF ILLINOIS

INDEX OF SHEETS

- 1 COVER
- 2 INDEX OF SHEETS, STANDARDS, GENERAL NOTES & COMMITMENTS
- 3 SUMMARY OF QUANTITIES
- 4 LOCATION MAP
- 5 TYPICAL SECTIONS
- 6-7 SCHEDULES
- 8 SURVEY MONUMENT COVER ASSEMBLY DETAIL

STANDARDS

- 000001-06 STANDARD SYMBOLS, ABBREVIATIONS AND PATTERNS
- 001001-02 AREAS OF REINFORCEMENT BARS
- 001006 DECIMAL OF AN INCH AND OF A FOOT
- 420701-02 PAVEMENT FABRIC
- 442101-07 CLASS B PATCHES
- 701006-05 OFF-RD OPERATIONS, 2L, 2W, 15' (4.5M) TO 24' (600MM) FROM PAVEMENT EDGE
- 701011-04 OFF-RD MOVING OPERATIONS, 2L, 2W, DAY ONLY
- 701201-04 LANE CLOSURE, 2L, 2W, DAY ONLY, FOR SPEEDS > 45 MPH
- 701301-04 LANE CLOSURE, 2L, 2W SHORT TERM OPERATIONS
- 701306-03 LANE CLOSURE, 2L, 2W, SLOW MOVING OPERATIONS DAY ONLY, FOR SPEEDS > 45 MPH
- 701311-03 LANE CLOSURE, 2L, 2W, MOVING OPERATIONS - DAY ONLY
- 701336-06 LANE CLOSURE, 2L, 2W WORK AREAS IN SERIES, FOR SPEEDS > 45 MPH
- 701901-04 TRAFFIC CONTROL DEVICES
- 780001-05 TYPICAL PAVEMENT MARKINGS
- 781001-03 TYPICAL APPLICATIONS RAISED REFLECTIVE PAVEMENT MARKERS

GENERAL NOTES

1. THE STANDARDS AND REVISION NUMBERS SHALL APPLY TO THIS PROJECT.
2. ILLINOIS STATE LAW REQUIRES A 48-HOUR NOTICE TO BE GIVEN TO ALL UTILITIES WITHIN THE PROJECT AREA BEFORE DIGGING. FIELD MARKING OF FACILITIES MAY BE OBTAINED BY CONTACTING J.U.L.I.E. OR FOR NON-MEMBERS, THE UTILITY COMPANY DIRECTLY. AGENCIES KNOWN TO HAVE FACILITIES WITHIN THE PROJECT AREA ARE AS FOLLOWS:

UTILITY	ABOVE GROUND	BELOW GROUND
•AMEREN ILLINOIS (GAS & ELECTRIC)	X	X
•CITY OF CARROLLTON (WATER & SANITARY SEWER)		X
•FRONTIER NORTH, INC. (COMMUNICATIONS)	X	X
•GREENE COUNTY RURAL WATER DISTRICT (WATER)		X
•NEW WAVE COMMUNICATIONS (CABLE TV)	X	X

MEMBERS OF J.U.L.I.E. (800-892-0123 OR 811) ARE INDICATED BY AN *. NON-JULIE MEMBERS MUST BE NOTIFIED INDIVIDUALLY.
3. THE CONTRACTOR AND THE ENGINEER SHALL BE AWARE THAT NO SURVEY WAS PERFORMED FOR THIS PROJECT, THE STATIONING, TOPOGRAPHY AND QUANTITIES SHOWN ON THESE PLANS WERE CREATED USING MICROFILM AND FIELD MEASUREMENTS. ALL SHALL BE ASSUMED TO BE APPROXIMATE. THE CONTRACTOR SHALL VERIFY DIMENSIONS AND CONDITIONS IN THE FIELD PRIOR TO CONSTRUCTION AND ORDERING OF MATERIALS.
4. PROPOSED PAVEMENT MARKING SHALL BE PLACED IN THE SAME LOCATION AS EXISTING AS DIRECTED BY THE RESIDENT ENGINEER.
5. THE AGGREGATE GRADATION FOR THE A-1 SURFACE TREATMENT SHALL BE CA16 OR CM16. THE AGGREGATES FOR THE MICRO-SURFACING SHALL MEET THE FRICTION AGGEGATE REQUIREMENTS FOR MIXTURE C IN ARTICLE 1004.03(a).
6. "ROAD CONSTRUCTION AHEAD" SIGNS SHALL BE PLACED AT THE BEGINNING AND END OF THE PROJECT PLUS ALL INTERSECTING SIDE ROADS AND WILL BE INCLUDED IN THE TRAFFIC CONTROL PAY ITEMS. ALL CONSTRUCTION SIGNS SHALL BE 48" X 48" FLUORESCENT ORANGE.
7. THE CONTRACTOR SHALL POST THE ROADWAY WITH "LOOSE GRAVEL" AND "SPEED LIMIT 35" SIGNS IN ACCORDANCE WITH APPLICABLE ARTICLES OF DIVISION 700 OF THE STANDARD SPECIFICATIONS. THESE SIGNS SHALL BE PLACED AT THE START OF WORK, NEAR INTERSECTING ROADWAYS AND THEN AT AN AVERAGE SPACING OF 0.5 MILES. THE SIGNS MAY BE REMOVED AS SOON AS THE SWEEPING OPERATION HAS BEEN COMPLETED. THE COST SHALL BE INCLUDED IN THE TRAFFIC CONTROL ITEM.
8. A QUANTITY OF SHORT TERM PAVEMENT MARKING AND WORK ZONE PAVEMENT MARKING REMOVAL SHALL BE INCLUDED TO ACCOUNT FOR CENTERLINE BEING REMOVED WITH CLASS B PATCHING.
9. THE CONTRACTOR SHALL POST AND MAINTAIN THE ROADWAY WITH "NO PASSING ZONES NOT STRIPED NEXT MILES" SIGNS UNTIL MARKINGS HAVE BEEN RESTORED IN ACCORDANCE WITH ARTICLE 701.17(C). THE COST SHALL BE INCLUDED IN THE TRAFFIC CONTROL ITEM.

10. NO OVERNIGHT LANE CLOSURES WILL BE PERMITTED.
11. A QUANTITY FOR BUMP REMOVAL AND FIBER MODIFIED ASPHALT CRACK SEALING HAS BEEN ESTIMATED FROM A FIELD REVIEW AND INCLUDED IN THE PLANS FOR USE AT LOCATIONS AS DIRECTED BY THE RESIDENT ENGINEER. THE ACTUAL QUANTITY FOR THESE PAY ITEMS WILL BE DETERMINED DURING CONSTRUCTION.
12. FLAGGERS SHALL BE PRESENT DURING ALL CLOSURE HOURS INCLUDING LUNCH HOUR AND NO ADDITIONAL COMPENSATION SHALL BE ALLOWED.
13. FLAGGERS SHALL BE REQUIRED AT ALL TIMES DURING PATCHING OPERATIONS.
14. ALL TRAFFIC CONTROL DEVICES AS HEREIN SPECIFIED AND ANY ADDITIONAL TRAFFIC CONTROL DEVICES AND FLAGGERS AS DEEMED NECESSARY BY THE RESIDENT ENGINEER SHALL BE INCLUDED IN THE CONTRACT TRAFFIC CONTROL AND PROTECTION PAY ITEMS.
15. A QUANTITY OF TEMPORARY PAVEMENT MARKING EQUAL TO THE QUANTITY OF PERMANENT PAVEMENT MARKING IS INCLUDED IN THE PLANS.

COMMITMENTS

NONE

MIXTURE REQUIREMENTS

ROUTE	FAP 761 (IL 108)
SECTION	(101,102)RS-3
COUNTY	GREENE
CONTRACT	76H73

DESCRIPTION:	CAPE SEAL - IL 108 FROM ILLINOIS RIVER TO 0.1 MILES W OF 11TH STREET IN CARROLLTON
--------------	--

MIXTURE USE	HMA REPLACEMENT
AC/PC	PC 64-22
RAP % (MAX)	SEE SPECIAL PROVISION
DESIGN AIR VOIDS	4.0% @ Ndes=70
MIX COMPOSITION (GRADATION MIXTURE)	IL 19.0
FRICTION AGG	MIXTURE "B"
QUALITY MGMT PROGRAM	QC/OA

PLAN QUANTITIES FOR HMA ITEMS ARE CALCULATED USING A UNIT WEIGHT OF 112 LB/SQ YD/IN (59.8 KG/SQ M/25 MM THICKNESS).

CODE NO.	ITEM	UNIT	100% STATE		CONSTR. CODE	
			TOTAL QUANTITY	ROADWAY		RURAL
				0005		
40601005	HOT-MIX ASPHALT REPLACEMENT OVER PATCHES	TON	45	45		
44002216	HOT-MIX ASPHALT REMOVAL OVER PATCHES, 4"	SO YD	201	201		
44200956	CLASS B PATCHES, TYPE II, 9 INCH	SO YD	18	18		
44200964	CLASS B PATCHES, TYPE IV, 9 INCH	SO YD	184	184		
44201299	DOWEL BARS 1 1/2"	EACH	88	88		
44213100	PAVEMENT FABRIC	SO YD	184	184		
44213200	SAW CUTS	FOOT	460	460		
44213204	TIE BARS 3/4"	EACH	69	69		
67100100	MOBILIZATION	L SUM	1	1		
70100450	TRAFFIC CONTROL AND PROTECTION, STANDARD 701201	L SUM	1	1		
70100460	TRAFFIC CONTROL AND PROTECTION, STANDARD 701306	L SUM	1	1		
70100600	TRAFFIC CONTROL AND PROTECTION, STANDARD 701336	L SUM	1	1		
70300100	SHORT TERM PAVEMENT MARKING	FOOT	5051	5051		
70300220	TEMPORARY PAVEMENT MARKING - LINE 4"	FOOT	166892	166892		

CODE NO.	ITEM	UNIT	100% STATE		CONSTR. CODE	
			TOTAL QUANTITY	ROADWAY		RURAL
				0005		
70300280	TEMPORARY PAVEMENT MARKING - LINE 24"	FOOT	12	12		
70301000	WORK ZONE PAVEMENT MARKING REMOVAL	SO FT	57338	57338		
* 78000200	THERMOPLASTIC PAVEMENT MARKING - LINE 4"	FOOT	166892	166892		
* 78000650	THERMOPLASTIC PAVEMENT MARKING - LINE 24"	FOOT	12	12		
* 78100100	RAISED REFLECTIVE PAVEMENT MARKER	EACH	694	694		
78300100	PAVEMENT MARKING REMOVAL	SO FT	55631	55631		
78300200	RAISED REFLECTIVE PAVEMENT MARKER REMOVAL	EACH	694	694		
X0326218	FIBER-MODIFIED ASPHALT CRACK SEALING	FOOT	247548	247548		
X0326219	BUMP REMOVAL	EACH	62	62		
X7810400	TEMPORARY RAISED PAVEMENT MARKER	EACH	7468	7468		
Z0064265	CAPE SEAL	SO YD	160922	160922		
φ Z0076604	TRAINEES TRAINING PROGRAM GRADUATE	Hour	500	500		
Z0070100	SURVEY MONUMENT COVER ASSEMBLY	EACH	1	1		

12

* SPECIALTY ITEM

φ 0042



ILLINOIS RIVER

FERRY LANDING BEGINS

FERRY LANDING ENDS
JOINT SEPARATING
CONC AND BIT PAVEMENT

BEGIN PROJECT - M.P. 0.0
EAST OF KAMPSVILLE FERRY

100E - M.P. 0.38

200E - M.P. 1.52

S.N. 031-0038
BRIDGE OMISSION
M.P. 2.00 - M.P. 2.03

CEDAR ST - M.P. 2.93

GUTTER BEGINS - M.P. 3.00

BLUFF
ELDRED
350E - M.P. 3.13

GUTTER ENDS - M.P. 3.64

490E - M.P. 4.48

600E - M.P. 5.86

675E - M.P. 6.62

700E - M.P. 6.90

750E - M.P. 7.50

800E - M.P. 8.00

900E - M.P. 9.01

END PROJECT - M.P. 10.55

M.P. 10.56 - 11TH ST.

NOT TO SCALE

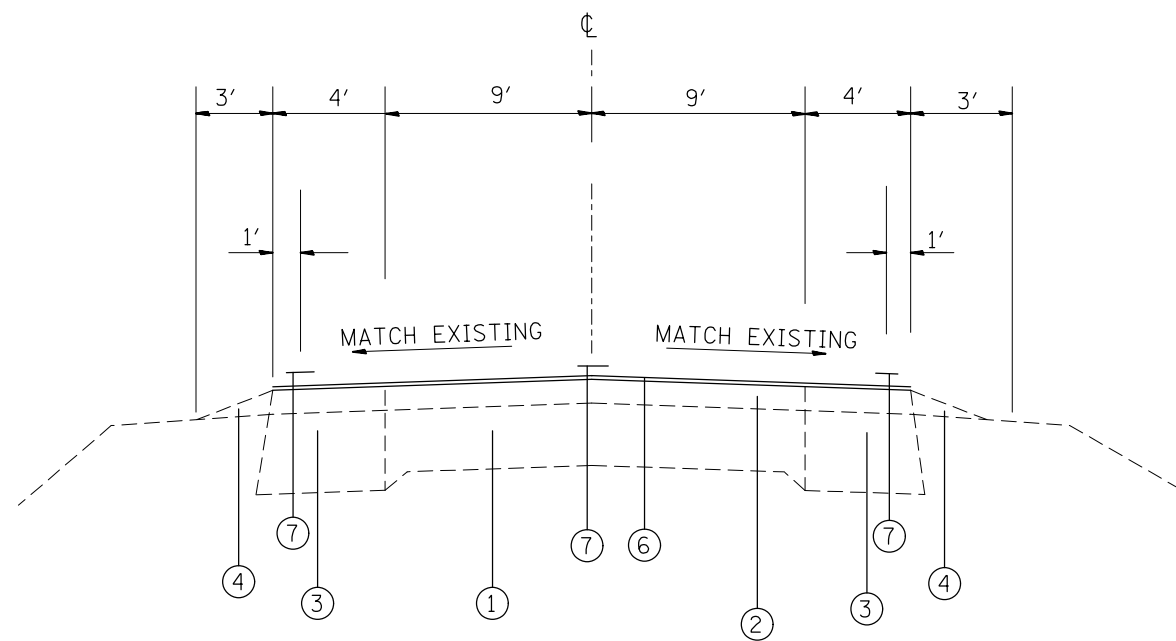
FILE NAME = c:\p\work\p\dot\murrayda\dms99927\d876h73-sht-plan.dgn	USER NAME = DEFAULT	DESIGNED - ___	REVISED - ___
		DRAWN - ___	REVISED - ___
	PLOT SCALE = 100.0000' / in.	CHECKED - ___	REVISED - ___
	PLOT DATE = 3/26/2015	DATE - ___	REVISED - ___

STATE OF ILLINOIS
DEPARTMENT OF TRANSPORTATION

LOCATION MAP

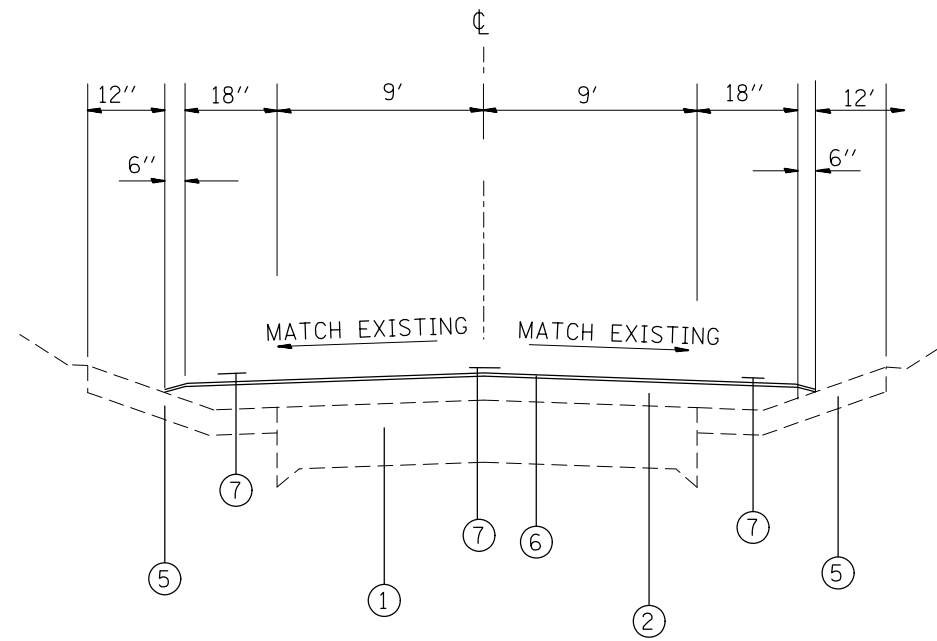
SCALE: _____ SHEET NO. ___ OF ___ SHEETS STA. _____ TO STA. _____

F.A. RTE.	SECTION	COUNTY	TOTAL SHEETS	SHEET NO.
761	(101,102)RS-3	GREENE	8	4
CONTRACT 76H73				
FED. ROAD DIST. NO. - [ILLINOIS] FED. AID PROJECT				



TYPICAL SECTION

MILE STATION 0.00 TO MILE STATION 2.00
 MILE STATION 2.03 TO MILE STATION 3.00
 MILE STATION 3.64 TO MILE STATION 10.55



TYPICAL SECTION

MILE STATION 3.00 TO MILE STATION 3.64

LEGEND

- ① EXISTING PCC PAVEMENT (9''-6''-9'')
- ② EXISTING RESURFACING 3''±
- ③ EXISTING WIDENING 9''
- ④ EXISTING AGGREGATE SHOULDER
- ⑤ EXISTING GUTTER, TYPE A
- ⑥ PROPOSED CAPE SEAL
- ⑦ PROPOSED THERMOPLASTIC PAVEMENT MARKING - LINE 4''

FILE NAME =	USER NAME = DEFAULT	DESIGNED -	REVISD -
et:\pw\work\p1dot\murrayda\dms99927\d876h73-sht-plan.dgn		DRAWN -	REVISD -
	PLOT SCALE = 100.0000' / 1in.	CHECKED -	REVISD -
	PLOT DATE = 3/26/2015	DATE -	REVISD -

**STATE OF ILLINOIS
 DEPARTMENT OF TRANSPORTATION**

TYPICAL SECTION	
SCALE: _____	SHEET NO. ___ OF ___ SHEETS
STA. _____ TO STA. _____	

F.A.P. RTE.	SECTION	COUNTY	TOTAL SHEETS	SHEET NO.
761	(101,102)RS-3	GREENE	8	5
				76H73
FED. ROAD DIST. NO. - ILLINOIS FED. AID PROJECT				

PAVEMENT PATCHING SCHEDULE									
DIR	MILE STATION TO MILE STATION	DIMENSIONS		CLASS B PATCHES, 9"		SAW CUTS	DOWEL BARS 1 1/2"	TIE BARS 3/4", NO 6	PAVEMENT FABRIC
		LENGTH	WIDTH	TY-II	TY-IV				
		FT	FT	SQ YDS	SQ YDS				
WB	0.01 - 0.02	50	12		67	136	20	25	67
FB	0.90 - 0.90	6	12	8		48	20		
WB	0.90 - 0.90	6	12	8		48	20		
FB	3.28 - 3.33	75	12		100	186	20	38	100
SUBTOTAL				16	167	418	80	63	167
10% SUBTOTAL (ADDITIONAL)*				2	17	42	8	6	17
TOTAL				18	184	460	88	69	184

*NOTE: AN ADDITIONAL 10% HAS BEEN ADDED TO THE FINAL PATCHING QUANTITY TO ALLOW FOR WINTER DAMAGE.

HOT-MIX ASPHALT PATCHING SCHEDULE					
DIR	MILE STATION TO MILE STATION	DIMENSIONS		HOT-MIX ASPHALT REMOVAL OVER PATCHES, 4"	HOT-MIX ASPHALT REPLACEMENT OVER PATCHES
		LENGTH	WIDTH		
		FT	FT		
WB	0.01 - 0.02	50	12	67	15
FB	0.90 - 0.90	6	12	8	2
WB	0.90 - 0.90	6	12	8	2
FB	3.28 - 3.33	75	12	100	22
SUBTOTAL				183	41
10% SUBTOTAL (ADDITIONAL)*				18	4
TOTAL				201	45

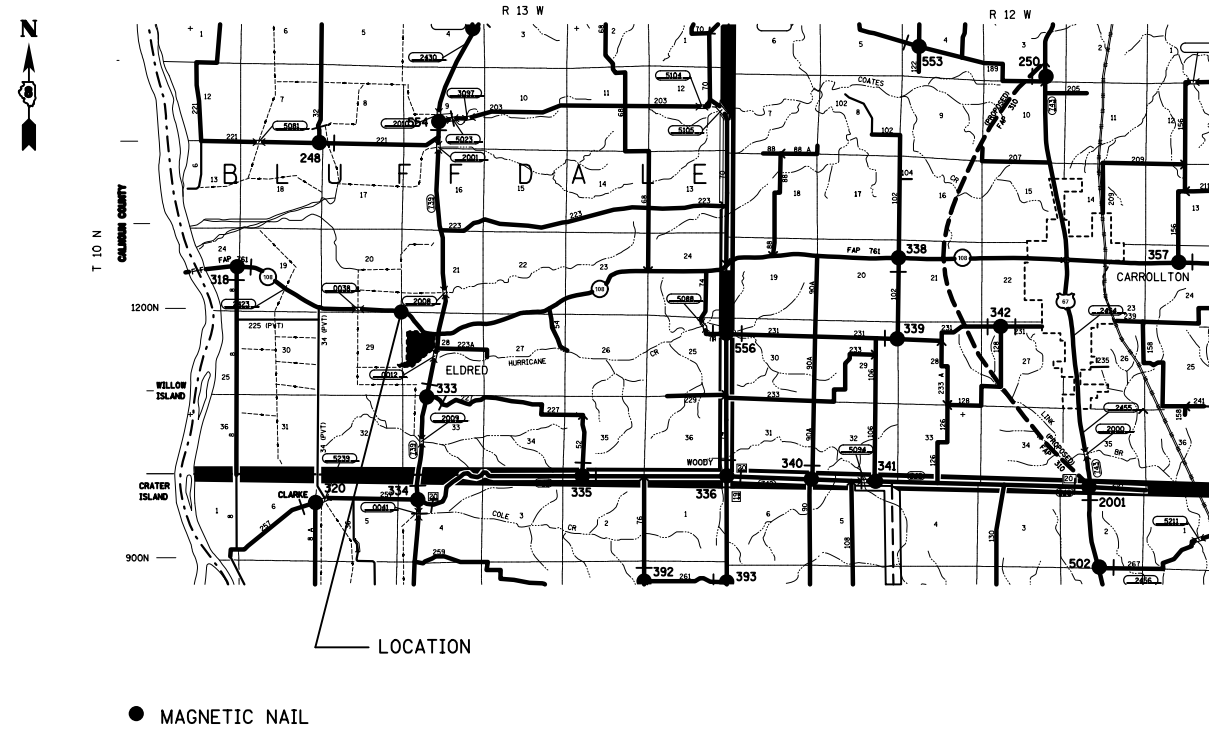
CRACK SEAL / BUMP REMOVAL SCHEDULE						
LOCATION				BUMP REMOVAL	FIBER-MODIFIED ASPHALT CRACK SEALING	
MILE STATION	TO	MILE STATION	LENGTH		LONGITUDINAL	TRANSVERSE
			FOOT	EACH	FOOT	FOOT
0.00	TO	2.03	10718	11	32155	11147
BRIDGE OMISSION						
2.00	TO	2.03				
2.03	TO	10.55	44986	45	134957	46785
SUBTOTAL				56	167112	57932
10% SUBTOTAL (ADDITIONAL)*				6	16711	5793
TOTAL				62	183823	63725
GRAND TOTAL				62	247548	

NOTE: QUANTITIES FOR BUMPS ARE DETERMINED BASED ON ONE BUMP EVERY 1000 FT.
QUANTITIES FOR CRACKS ARE BASED ON 3 LONGITUDINAL CRACKS THE LENGTH OF
THE PROJECT AND 1 TRANSVERSE CRACK EVERY 25 FT.

CAPE SEAL SCHEDULE				
LOCATION				CAPE SEAL
MILE STATION	TO	MILE STATION	LENGTH	
			FOOT	SQ YD
0.00	TO	2.03	10718	30964
BRIDGE OMISSION				
2.00	TO	2.03		
2.03	TO	10.55	44986	129958
SUBTOTAL				160922
TOTAL				160922

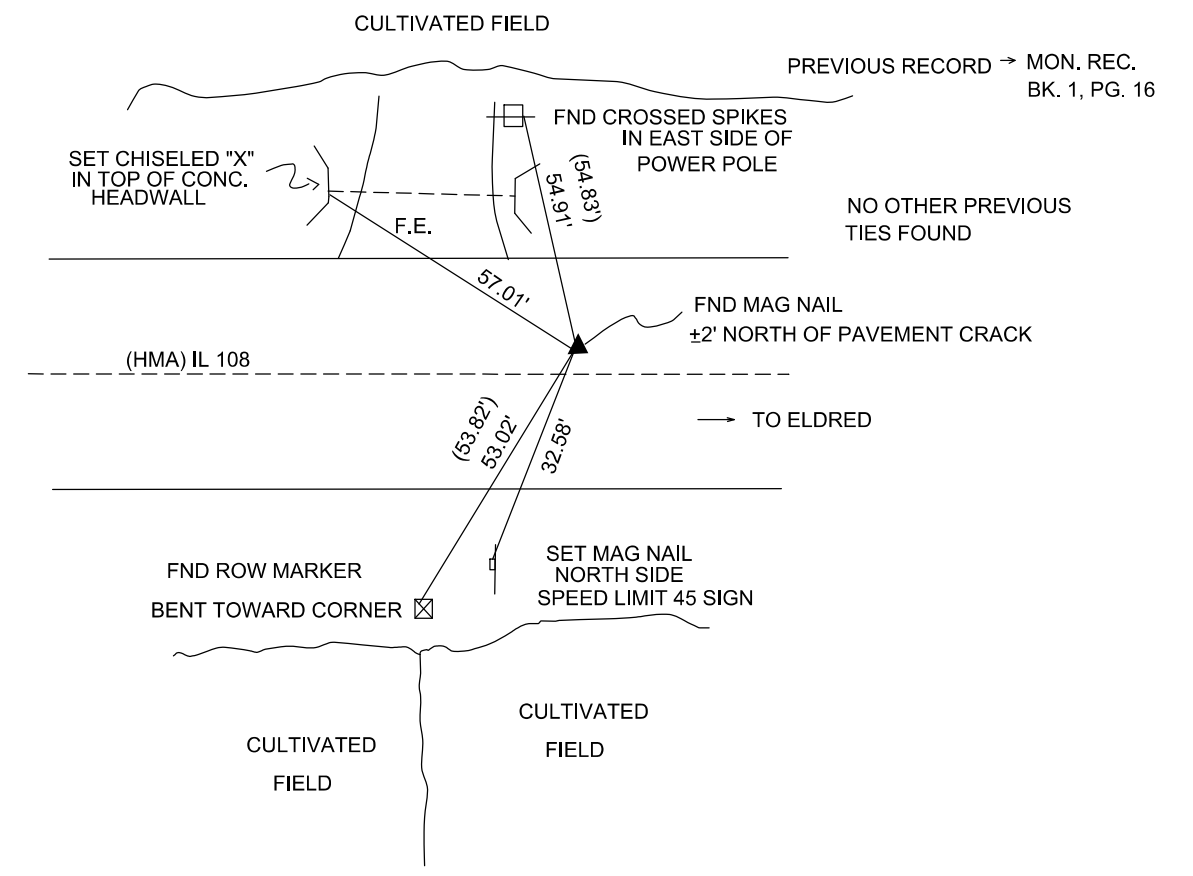
PAVEMENT MARKING SCHEDULE

MILE STATION TO MILE STATION	LENGTH	NO PASSING ZONES	RAISED REFLECTIVE PAVEMENT MARKER REMOVAL	PAVEMENT MARKING REMOVAL	TEMPORARY RAISED PAVEMENT MARKERS	AMBER RAISED REFLECTIVE PAVEMENT MARKERS	SHORT TERM PAVEMENT MARKING	TEMPORARY PAVEMENT MARKING				WORK ZONE PAVEMENT MARKING REMOVAL	THERMOPLASTIC PAVEMENT MARKING				
			EACH	SQ FT	EACH	EACH	FOOT	4" SOLID YELLOW	4" SKIP-DASH YELLOW	4" SOLID WHITE	24" SOLID WHITE	SQ FT	4" SOLID YELLOW	4" SKIP-DASH YELLOW	4" SOLID WHITE	24" SOLID WHITE	
			FOOT					FOOT	FOOT	FOOT	FOOT		FOOT	FOOT	FOOT	FOOT	
0.00 - 0.07	380	BOTH	5	507	76	5	35	760		760	12	518	760		760	12	
0.07 - 0.23	845	WB	11	915	169	11	77	845	211	1690		941	845	211	1690		
0.23 - 0.36	686		9	515	34	9	62		172	1373		536		172	1373		
0.36 - 0.59	1214	WB	15	1316	243	15	110	1214	304	2429		1352	1214	304	2429		
0.59 - 0.65	317	BOTH	4	422	63	4	29	634		634		432	634		634		
0.65 - 0.86	1109	WB	14	1201	222	14	101	1109	277	2218		1235	1109	277	2218		
0.86 - 1.76	4752		59	3564	238	59	432		1188	9504		3708		1188	9504		
1.76 - 1.98	1162	EB	15	1258	232	15	106	1162	290	2323		1294	1162	290	2323		
1.98 - 2.00	106	BOTH	1	141	21	1	10	211		211		144	211		211		
BRIDGE OMISSION																	
2.00 - 2.03																	
2.03 - 2.24	1109	WB	14	1201	222	14	101	1109	277	2218		1235	1109	277	2218		
2.24 - 3.01	4066		51	3049	203	51	370		1016	8131		3172		1016	8131		
3.01 - 3.12	581	EB	7	629	116	7	53	581	145	1162		647	581	145	1162		
3.12 - 4.77	8712	BOTH	109	11616	1742	109	792	17424		17424		11880	17424		17424		
4.77 - 5.16	2059	WB	26	2231	412	26	187	2059	515	4118		2293	2059	515	4118		
5.16 - 5.52	1901	BOTH	24	2534	380	24	173	3802		3802		2592	3802		3802		
5.52 - 6.06	2851	WB	36	3089	570	36	259	2851	713	5702		3175	2851	713	5702		
6.06 - 6.54	2534		32	1901	127	32	230		634	5069		1978		634	5069		
6.54 - 6.75	1109	EB	14	1201	222	14	101	1109	277	2218		1235	1109	277	2218		
6.75 - 7.07	1690	BOTH	21	2253	338	21	154	3379		3379		2304	3379		3379		
7.07 - 7.16	475	WB	6	515	95	6	43	475	119	950		529	475	119	950		
7.16 - 7.18	106	BOTH	1	141	21	1	10	211		211		144	211		211		
7.18 - 7.37	1003	EB	13	1087	201	13	91	1003	251	2006		1117	1003	251	2006		
7.37 - 7.50	686	BOTH	9	915	137	9	62	1373		1373		936	1373		1373		
7.50 - 7.63	686	WB	9	744	137	9	62	686	172	1373		764	686	172	1373		
7.63 - 8.60	5122		64	3841	256	64	466		1280	10243		3996		1280	10243		
8.60 - 8.76	845	EB	11	915	169	11	77	845	211	1690		941	845	211	1690		
8.76 - 8.81	264		3	198	13	3	24		66	528		206		66	528		
8.81 - 8.92	581	WB	7	629	116	7	53	581	145	1162		647	581	145	1162		
8.92 - 8.97	264	BOTH	3	352	53	3	24	528		528		360	528		528		
8.97 - 9.03	317	EB	4	343	63	4	29	317	79	634		353	317	79	634		
9.03 - 9.13	528		7	396	26	7	48		132	1056		412		132	1056		
9.13 - 9.35	1162	WB	15	1258	232	15	106	1162	290	2323		1294	1162	290	2323		
9.35 - 10.55	6336		79	4752	317	79	576		1584	12672		4944		1584	12672		
SUBTOTAL				694	55631	7468	694	5051	45430	10349	111114	12	57314	45430	10349	111114	12
TOTAL				694	55631	7468	694	5051	166904			57314	166904				



JMK
RCJ
3-10-15

* ALL TIES PULLED DIRECT



FILE NAME = c:\pwork\pwork\murrayda\dms99927\d876h73-sht-plen.dgn	USER NAME = DEFAULT	DESIGNED - ____	REVISED - ____
PLOT SCALE = 100.0000' / 1in.	CHECKED - ____	REVISIED - ____	REVISIED - ____
PLOT DATE = 3/26/2015	DATE - ____	REVISIED - ____	REVISIED - ____

**STATE OF ILLINOIS
DEPARTMENT OF TRANSPORTATION**

SURVEY MONUMENT COVER ASSEMBLY DETAIL			
SCALE: _____	SHEET NO. ____ OF ____ SHEETS	STA. _____ TO STA. _____	

F.A.P. RTE.	SECTION	COUNTY	TOTAL SHEETS	SHEET NO.
761	(101,102)RS-3	GREENE	8	8
FED. ROAD DIST. NO. - ILLINOIS FED. AID PROJECT				76H73