

STATE OF ILLINOIS
DEPARTMENT OF TRANSPORTATION
DIVISION OF HIGHWAYS

SAFE ROUTES TO SCHOOLS PROGRAM
SIDEWALK IMPROVEMENTS
CITY OF WAVERLY
SECTION 15-00007-00-SW
PROJECT - SRTS-4009(340)
MORGAN COUNTY
C-96-238-15

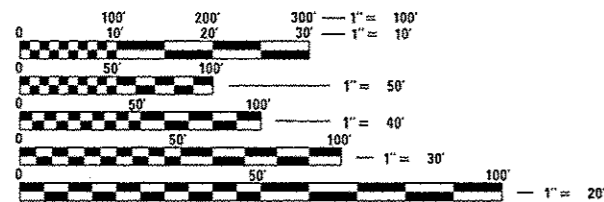
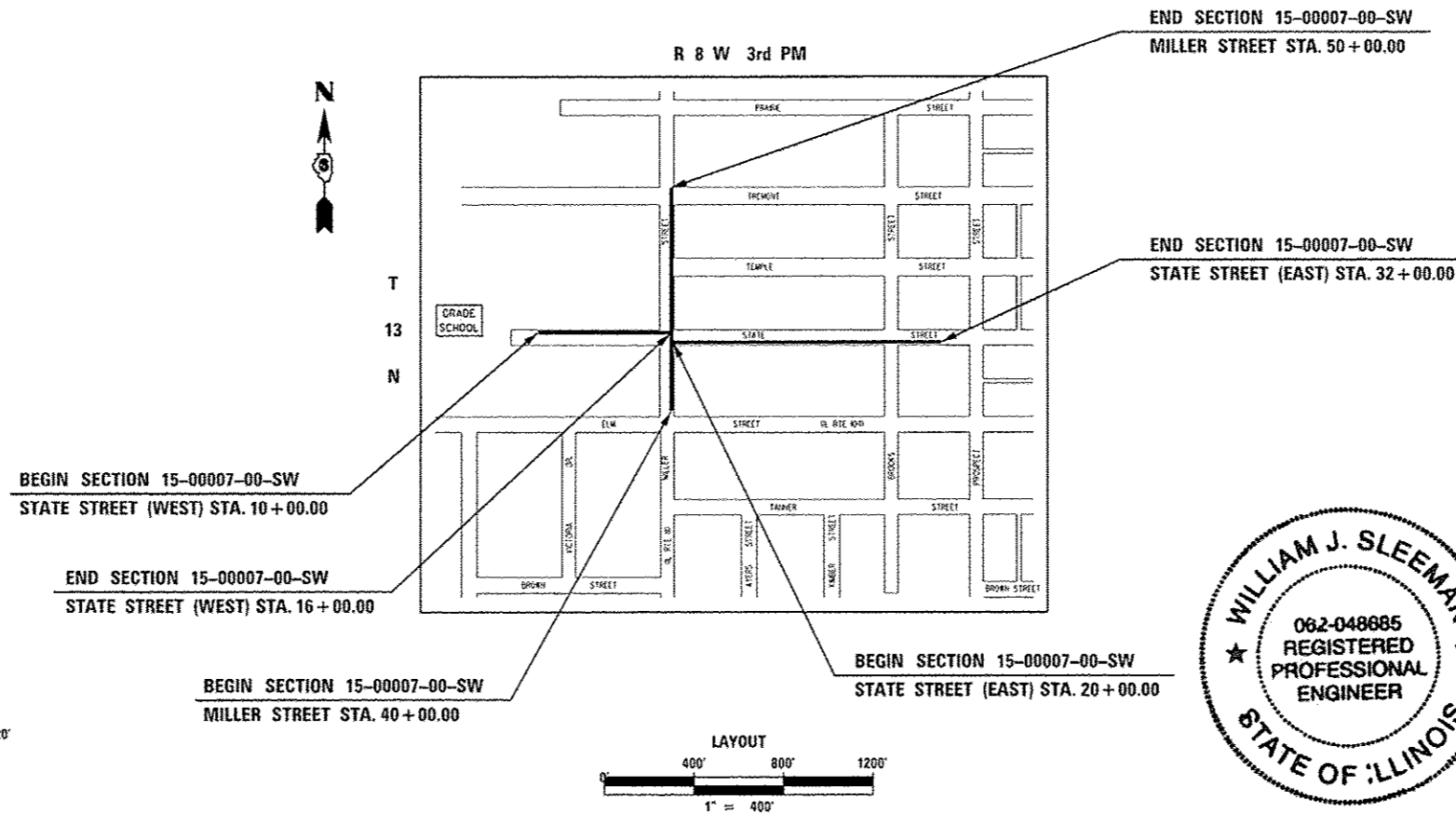
F.A. RTE.	SECTION	COUNTY	TOTAL SHEETS	SHEET NO.
	15-00007-00-SW	MORGAN	25	1
FED. ROAD DIST. NO.	ILLINOIS	CONTRACT NO. 93653		

INDEX OF SHEETS

SHEET NO.	ITEM
1	COVER SHEET
2	GENERAL NOTES
3-4	SUMMARY OF QUANTITIES
5-6	TYPICAL SECTIONS
7	SCHEDULE OF QUANTITIES
8	ALIGNMENT, TIES & BENCHMARKS
9	PLAN AND PROFILE STATE STREET (WEST)
10-12	PLAN AND PROFILE STATE STREET (EAST)
13-14	PLAN AND PROFILE MILLER STREET
15	CONSTRUCTION DETAILS
16-25	CROSS SECTIONS

HIGHWAY STANDARDS

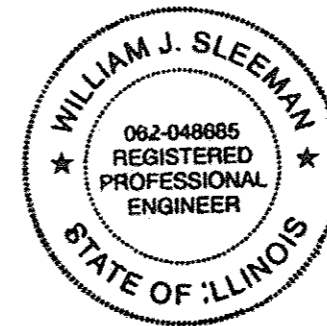
- 000001-06 - STANDARD SYMBOLS, ABBREVIATIONS AND PATTERNS
- 280001-07 - TEMPORARY EROSION CONTROL SYSTEMS
- 424001-08 - PERPENDICULAR CURB RAMPS FOR SIDEWALKS
- 424026-01 - ENTRANCE /ALLEY PEDESTRIAN CROSSINGS
- 602301-04 - INLET - TYPE A
- 604036-03 - GRATE TYPE B
- 701006-05 - OFF-ROAD OPERATIONS, 2L, 2W, 15' TO 24" FROM PAVEMENT EDGE
- 701301-04 - LANE CLOSURE, 2L, 2W, SHORT TIME OPERATIONS
- 701501-06 - URBAN LANE CLOSURE, 2L, 2W, UNDIVIDED
- 701801-05 - SIDEWALK, CORNER OR CROSSWALK CLOSURE
- 701901-04 - TRAFFIC CONTROL DEVICES



FULL SIZE PLANS HAVE BEEN PREPARED USING STANDARD ENGINEERING SCALES. REDUCED SIZED PLANS WILL NOT CONFORM TO STANDARD SCALES. IN MAKING MEASUREMENTS ON REDUCED PLANS, THE ABOVE SCALES MAY BE USED.

J.U.L.I.E.
JOINT UTILITY LOCATION INFORMATION FOR EXCAVATION
1-800-892-0123
OR 811

LENGTH OF IMPROVEMENT (STATE STREET) (WEST) = 600.00 FEET = 0.114 MILES
LENGTH OF IMPROVEMENT (MILLER STREET) = 1000.00 FEET = 0.189 MILES
LENGTH OF IMPROVEMENT (STATE STREET) (EAST) = 1200.00 FEET = 0.227 MILES
TOTAL LENGTH OF IMPROVEMENT = 2800.00 FEET = 0.530 MILES
NET LENGTH OF IMPROVEMENT = 2501.10 FEET = 0.474 MILES



BY [Signature] EXPIRES: 11-30-2015
DATE 4/9/2015

STATE OF ILLINOIS DEPARTMENT OF TRANSPORTATION DIVISION OF HIGHWAYS	
APPROVED	<u>April 9 2015</u> <u>[Signature]</u> MAYOR - CITY OF WAVERLY
PASSED	<u>4/14 2015</u> <u>[Signature]</u> DISTRICT 6 ENGINEER OF LOCAL ROADS & STREETS
PASSED	<u>April 20 2015</u> <u>[Signature]</u> DISTRICT 6 CONSTRUCTION ENGINEER
Releasing For Bid Based on Limited Review	<u>4/14 2015</u> <u>[Signature]</u> DEPUTY DIRECTOR OF HIGHWAYS, REGION 4 ENGINEER

GENERAL NOTES

1. THE LOCATION OF UNDERGROUND UTILITIES SHOWN ON THE PLANS REPRESENTS THE BEST KNOWLEDGE OF THE OWNER AND THE INDICATED ADJUSTMENTS ARE CONSIDERED TO BE REASONABLY ACCURATE. IT SHALL BE THE CONTRACTORS RESPONSIBILITY TO VERIFY LOCATIONS OF UNDERGROUND INSTALLATIONS BEFORE STARTING CONSTRUCTION OPERATIONS. THE CONTRACTOR SHALL INDEMNIFY THE OWNER, ITS OFFICERS AND EMPLOYEES AGAINST ALL CLAIMS DUE TO DAMAGE TO CORPORATE OR PRIVATE PROPERTY RESULTING FROM HIS/HER CONSTRUCTION OPERATIONS AS DESCRIBED IN ARTICLE 107.20 AND 107.26 OF THE STANDARD SPECIFICATIONS FOR ROAD AND BRIDGE CONSTRUCTION.
2. THIS SECTION SHALL BE CONSTRUCTED IN ACCORDANCE WITH THE PLANS, THE "STANDARD SPECIFICATIONS FOR ROAD AND BRIDGE CONSTRUCTION" ADOPTED JANUARY 1, 2012, THE "MANUAL ON UNIFORM TRAFFIC CONTROL DEVICES", THE "SUPPLEMENTAL SPECIFICATIONS AND RECURRING SPECIAL PROVISIONS", AND THE SPECIAL PROVISIONS INCLUDED IN THE PROPOSAL.
3. THE CONTRACTOR MAY BE REQUIRED TO CONDUCT SOME OF HIS/HER GRADING OPERATIONS AROUND TRANSMISSION POLES AND UNDER TRANSMISSION LINES. THE ADDED COST OF SO DOING SHALL BE INCLUDED WITH THE COST OF THE CONSTRUCTION ITEM FOR WHICH THE GRADING IS BEING ACCOMPLISHED.
4. WHERE SECTION OR SUBSECTION MONUMENTS ARE ENCOUNTERED, THE ENGINEER SHALL BE NOTIFIED BEFORE SUCH MONUMENTS ARE REMOVED. THE CONTRACTOR SHALL PROTECT AND CAREFULLY PRESERVE ALL MONUMENTS UNTIL AN AUTHORIZED SURVEYOR OR AGENT HAS WITNESSED OR OTHERWISE REFERENCED THEIR LOCATION. THE CONTRACTOR WILL BE RESPONSIBLE FOR HAVING AN AUTHORIZED SURVEYOR RE-ESTABLISH ANY SECTION OR SUBSECTION MONUMENTS DESTROYED BY HIS OPERATIONS.
5. ALL ELEVATIONS SHOWN REFER TO THE U.S.G.S. DATUM - NORTH AMERICAN VERTICAL DATUM OF 1988 (NAVD88).
6. ALL EXISTING ROADWAY FEATURES SUCH AS PAVEMENT, CURB, SIDEWALK, DRIVEWAY PAVEMENT, CULVERTS, HEADWALLS, FENCING, RETAINING WALLS, ETC. WHICH INTERFERE WITH THE PROPOSED CONSTRUCTION SHALL BE REMOVED BY THE CONTRACTOR UNLESS NOTED OTHERWISE ON THE PLANS. ALL MISCELLANEOUS FEATURES WHICH ARE TO BE REMOVED AND FOR WHICH THERE IS NO SPECIFIC PAY ITEM, WILL NOT BE MEASURED SEPARATELY FOR PAYMENT. THE COST OF THIS REMOVAL WORK SHALL BE INCLUDED WITH THE COST OF THE CONSTRUCTION ITEM FOR WHICH THE REMOVAL IS BEING ACCOMPLISHED.
7. ALL EXISTING PUBLIC AND MUNICIPAL OWNED UTILITIES REQUIRING ADJUSTMENT WILL BE MADE BY THE UTILITY OWNED INVOLVED UNLESS OTHERWISE NOTED. WHERE NO PROVISIONS HAVE BEEN MADE FOR ADJUSTMENT ON THE PLANS, NO ADDITIONAL COMPENSATION WILL BE ALLOWED DUE TO DELAYS OR INCONVENIENCES CAUSED BY THE SAID UTILITY ADJUSTMENTS.
8. IT IS THE CONTRACTORS RESPONSIBILITY TO ASCERTAIN EXISTING FIELD CONDITIONS BEFORE BIDDING ON THIS PROJECT, SPECIFICALLY AS THEY RELATE TO THE LUMP SUM PAY ITEMS.
9. ABANDONED UNDERGROUND UTILITIES THAT CONFLICT WITH CONSTRUCTION SHALL BE DISPOSED OUTSIDE THE LIMITS OF RIGHT OF WAY ACCORDING TO ARTICLE 202.03 OF THE STANDARD SPECIFICATIONS AND AS DIRECTED BY THE ENGINEER. THIS WORK WILL NOT BE PAID FOR SEPARATELY, BUT SHALL BE CONSIDERED INCLUDED IN THE COST OF EARTH EXCAVATION AND NO ADDITIONAL COMPENSATION WILL BE ALLOWED.
10. THE CONTRACTOR SHALL VERIFY ALL DIMENSIONS AND CONDITIONS IN THE FIELD PRIOR TO CONSTRUCTION AND ORDERING OF MATERIALS.
11. REMOVAL OF EXISTING BITUMINOUS SURFACE (OIL AND CHIP), HMA SURFACE, AGGREGATE BASE COURSE AND AGGREGATE SURFACE COURSE SHALL BE CONSIDERED INCIDENTAL TO EARTH EXCAVATION.
12. EXISTING PAVEMENT, SIDEWALK AND CURB AND CUTTER DAMAGED DUE TO THE CONTRACTORS NEGLIGENCE SHALL BE REPLACED TO THE SATISFACTION OF THE ENGINEER, AT NO ADDITIONAL COST TO THE DEPARTMENT.
13. DURING CONSTRUCTION OPERATIONS, THE CONTRACTOR SHALL COMPLY WITH THE LEGAL LOADING LIMITS. THE CONTRACTOR SHALL BE RESPONSIBLE FOR REPAIRING AND DAMAGE CAUSED BY THE LUGS OR CLEATS ON TREADS OR WHEELS, OR EQUIPMENT, OR BY EXCESSIVE WEIGHTS AND LOADS.
14. THE CONTRACTOR SHALL CONFINE HIS/HER OPERATIONS TO THE AREA LOCATED WITHIN THE CONSTRUCTION LIMITS SHOWN ON THE PLANS. ANY AREA DISTURBED BEYOND THESE LIMITS SHALL BE RESTORED TO ITS ORIGINAL CONDITION AT NO ADDITIONAL COST TO THE DEPARTMENT.
15. DURING CONSTRUCTION OPERATIONS, IF ANY LOOSE MATERIAL IS DEPOSITED IN THE FLOW LINE OF DITCHES, CUTTERS OR DRAINAGE STRUCTURES SO THAT THE NATURAL FLOW OF WATER IS OBSTRUCTED, IT SHALL BE REMOVED AT THE CLOSE OF EACH WORKING DAY. AT THE CONCLUSION OF CONSTRUCTION OPERATIONS, ALL DRAINAGE STRUCTURES SO AFFECTED SHALL BE FREE FROM ALL DEBRIS. THIS WORK SHALL BE INCLUDED IN THE COST OF EARTH EXCAVATION.
16. ALL SAW CUTS THAT ARE INDICATED IN THE PLANS SHALL BE CONSIDERED INCIDENTAL TO THE PORTLAND CEMENT CONCRETE SIDEWALK AND NO ADDITIONAL COST WILL BE ALLOWED.
17. ALL AREAS OF SIDEWALK REMOVAL INDICATED IN THE PLANS WHERE NO SIDEWALK IS BEING RECONSTRUCTED SHALL HAVE CLEAN EARTHEN MATERIAL PLACED, GRADED AND SEEDED. THE COST OF THE REQUIRED EARTHEN MATERIAL SHALL BE CONSIDERED INCLUDED IN THE COST OF THE SIDEWALK REMOVAL AND NO ADDITIONAL COST WILL BE ALLOWED.
18. ANY NECESSARY TRENCH BACKFILL REQUIRED FOR INSTALLATION OF PIPE CULVERTS OR STORM SEWERS AS INDICATED IN THE PLANS SHALL BE INCLUDED IN THE COST OF THE CULVERT PIPE OR STORM SEWER AND NO ADDITIONAL COST WILL BE ALLOWED.

TRAFFIC CONTROL

1. NO OVERNIGHT LANE CLOSURES WILL BE ALLOWED.
2. "ROAD CONSTRUCTION AHEAD" SIGNS SHALL BE PLACED AT THE BEGINNING AND END OF THE PROJECT AND ON THE INTERSECTING SIDE ROADS, AND SHALL BE INCLUDED IN THE TRAFFIC CONTROL PAY ITEMS.
3. FLAGMEN SHALL BE PRESENT DURING CLOSURE OF ANY ADJACENT TRAFFIC LANES AND NO ADDITIONAL COMPENSATION SHALL BE ALLOWED.
4. FOR STABILIZATION, ALL TYPE III BARRICADES SHALL REQUIRE A MINIMUM OF FOUR SANDBAGS PER BARRICADE.

UTILITY COORDINATION

ILLINOIS STATE LAW REQUIRES A 48 - HOUR NOTICE BE GIVEN TO ALL UTILITIES BEFORE DIGGING. FIELD MARKING OF FACILITIES MAY BE OBTAINED BY CONTACTING J.U.L.I.E. OR FOR NON-MEMBERS, THE UTILITY COMPANY DIRECTLY. AGENCIES KNOWN TO HAVE FACILITIES WITHIN THE PROJECT AREA ARE AS FOLLOWS:

- AMEREN CIPS - ELECTRIC
- FRONTIER COMMUNICATIONS - TELEPHONE
- MEDIACOM - CABLE TELEVISION
- CITY OF WAVERLY - WATER
- CITY OF WAVERLY - SEWER
- CITY OF WAVERLY - GAS

MEMBERS OF J.U.L.I.E. (800-892-0123) ARE INDICATED BY AN *. NON-J.U.L.I.E. MEMBERS MUST BE NOTIFIED INDIVIDUALLY.

UNDERGROUND FACILITIES, STRUCTURES AND UTILITIES HAVE BEEN PLOTTED FROM AVAILABLE INFORMATION FURNISHED BY THE UTILITY OWNERS AND MUST BE CONSIDERED APPROXIMATE. IT IS POSSIBLE THERE MAY BE OTHERS, THE EXISTENCE OF WHICH IS NOT PRESENTLY KNOWN OR SHOWN. IT IS THE CONTRACTOR'S RESPONSIBILITY TO DETERMINE THEIR EXISTENCE AND EXACT LOCATION AND TO AVOID DAMAGE THERETO.

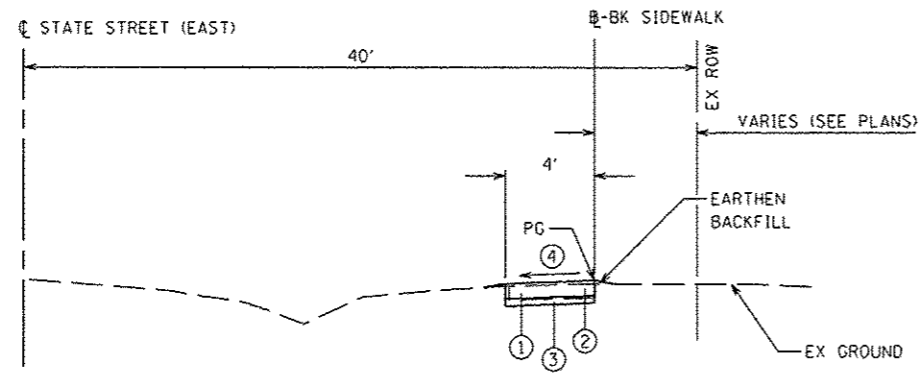
FILE NAME =	USER NAME = #USER#	DESIGNED -	REVISED -	CITY OF WAVERLY SAFE ROUTES TO SCHOOLS PROGRAM	GENERAL NOTES	F.A. RTE.	SECTION	COUNTY	TOTAL SHEETS	SHEET NO.
P:\1402596\Design\Design\C400 Sheets\06	516-002-shr-general notes.dgn	DRAWN - M. MCEVERS	REVISED -			15-00007-00-SW	MORGAN	25	2	
Default	PLOT SCALE = 48.0000 "/ in.	CHECKED - W. SLEEMAN	REVISED -			CONTRACT NO. 93653		ILLINOIS FED. AID PROJECT		
	PLOT DATE = 4/9/2015	DATE - 02/18/2015	REVISED -			SCALE:	SHEET 1 OF 1 SHEETS	STA.	TO STA.	

CODE NO.	ITEM	UNIT	TOTAL QUANTITY	CONSTRUCTION CODE						
				0021						
20200100	EARTH EXCAVATION	CU YD	132	132						
25000100	SEEDING, CLASS 1	ACRE	0.25	0.25						
25000400	NITROGEN FERTILIZER NUTRIENT	POUND	23	23						
25000500	PHOSPHOROUS FERTILIZER NUTRIENT	POUND	23	23						
25000600	POTASSIUM FERTILIZER NUTRIENT	POUND	23	23						
25100115	MULCH, METHOD 2	ACRE	0.25	0.25						
28000500	INLET AND PIPE PROTECTION	EACH	7	7						
40200800	AGGREGATE SURFACE COURSE, TYPE B	TON	20	20						
42400100	PORTLAND CEMENT CONCRETE SIDEWALK 4 INCH	SQ FT	10,360	10,360						
42400300	PORTLAND CEMENT CONCRETE SIDEWALK 6 INCH	SQ FT	1194	1194						
42400800	DETECTABLE WARNINGS	SQ FT	98	98						
44000200	DRIVEWAY PAVEMENT REMOVAL	SO YD	16	16						
44000600	SIDEWALK REMOVAL	SO FT	11,455	11,455						
50105220	PIPE CULVERT REMOVAL	FOOT	30	30						

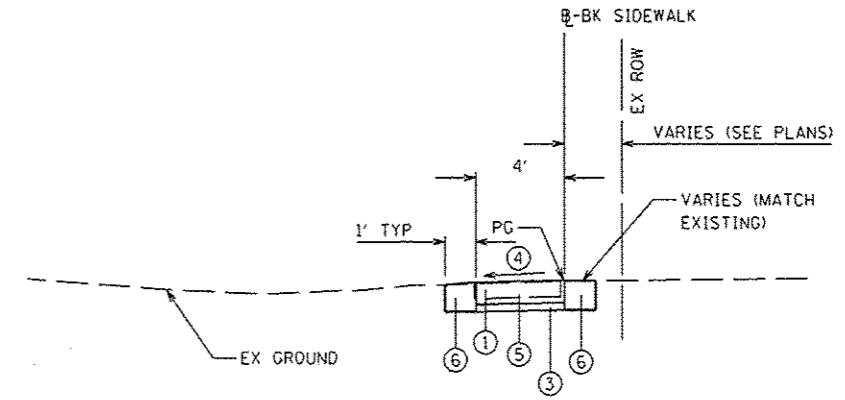
(S) SEE SPECIAL PROVISIONS

FILE NAME : P:\142576\Design\Design\CADD Sheets\00	USER NAME : *USERS* 576-003-004-rlt-500.dgn	DESIGNED - DRAWN - M. MCEVERS	REVISED - REVISED -	CITY OF WAVERLY SAFE ROUTES TO SCHOOLS PROGRAM	SUMMARY OF QUANTITIES			F.A. RTE.	SECTION 15-0000T-00-SW	COUNTY MORGAN	TOTAL SHEETS 25	SHEET NO. 3
Default	PLOT SCALE : 40.0000 ' / in.	CHECKED - W. SLEEMAN	REVISED -					SCALE:	SHEET 1	OF 2 SHEETS	STA.	TO STA.
	PLOT DATE : 4/9/2015	DATE - 02/18/2015	REVISED -									

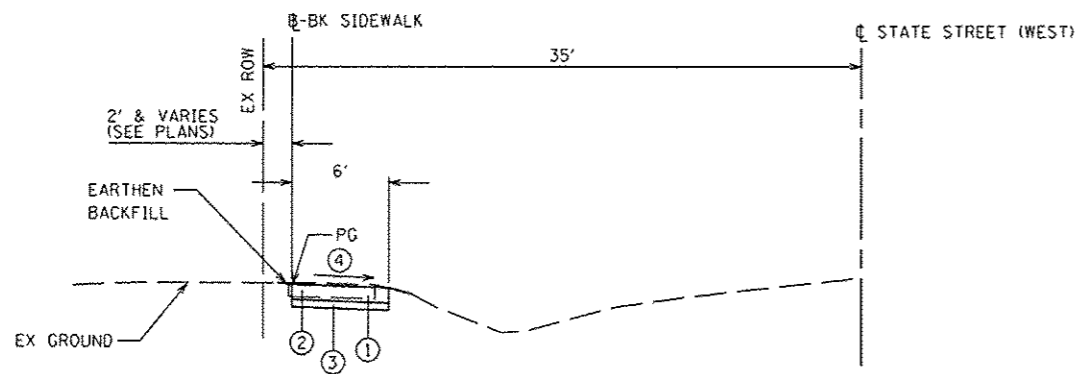
- ① EXISTING CONCRETE SIDEWALK (TO BE REMOVED UNLESS NOTED OTHERWISE)
- ② PROPOSED PORTLAND CEMENT CONCRETE SIDEWALK, 4 INCH
- ③ PROPOSED FINE AGGREGATE SUBBASE, 2" (COST TO BE INCLUDED IN PCC SIDEWALK)
- ④ CROSS SLOPE SHALL BE 1.5% NOMINAL (2% MAX) UNLESS OTHERWISE SHOWN
- ⑤ PROPOSED PORTLAND CEMENT CONCRETE SIDEWALK, 6 INCH
- ⑥ PROPOSED AGGREGATE SURFACE COURSE, TYPE B



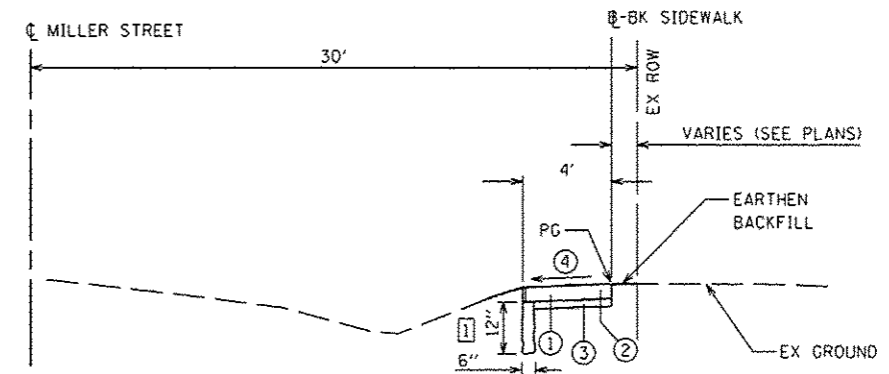
TYPICAL SIDEWALK SECTION
 STA. 20+00.00 TO STA. 29+62.20
 STA. 29+86.70 TO STA. 31+66.70
 (EXCEPT TRANSITIONS)



TYPICAL SIDEWALK SECTION - ACROSS GRAVEL ENTRANCES
 (EXCEPT TRANSITIONS)



TYPICAL SIDEWALK SECTION
 STA. 10+47.50 TO STA. 15+57.80
 (EXCEPT TRANSITIONS)



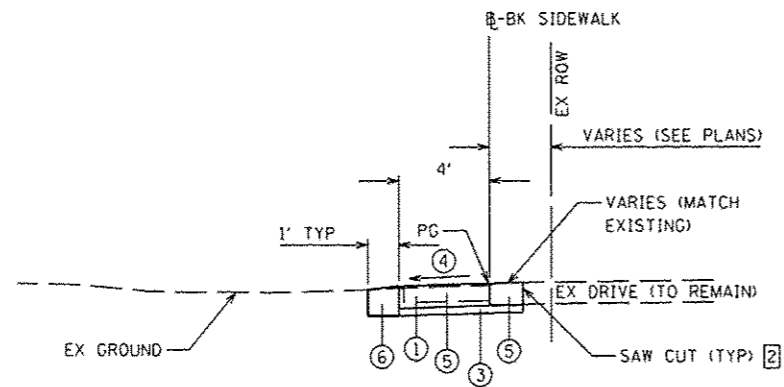
TYPICAL SIDEWALK SECTION
 STA. 40+01.50 TO STA. 43+18.00
 STA. 43+47.00 TO STA. 46+33.40
 STA. 46+65.00 TO STA. 49+55.00
 (EXCEPT TRANSITIONS)

NOTE:

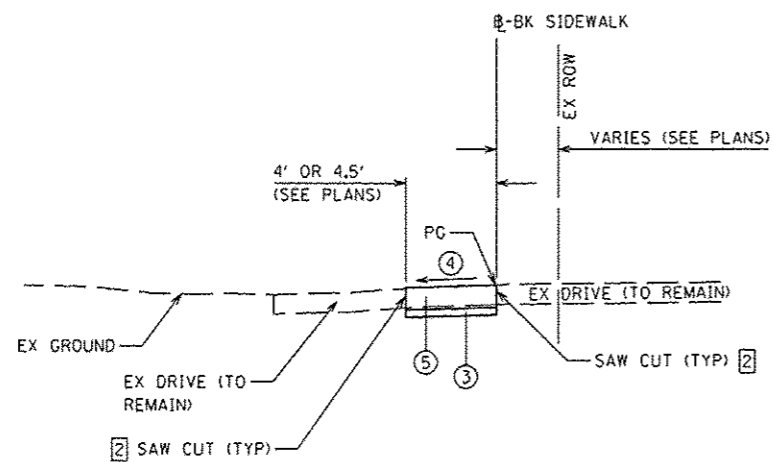
① PCC SWK, 4 INCH SHALL BE CONSTRUCTED WITH A MONOLITHIC 12"x6" TOE WALL FROM STATION 40+03.00 TO STATION 43+05.00. THE TOE WALL IS NOT REQUIRED TO BE FORMED AND SHALL NOT BE CONSTRUCTED THROUGH DRIVES. ALL COST FOR THIS WORK SHALL BE INCLUDED IN COST OF PORTLAND CEMENT CONCRETE SIDEWALK, 4 INCH.

FILE NAME #	USER NAME #	DESIGNED -	REVISED -	CITY OF WAVERLY SAFE ROUTES TO SCHOOLS PROGRAM	TYPICAL SECTIONS	F.A. RTE.	SECTION	COUNTY	TOTAL SHEETS	SHEET NO.
P:\1402596\Design\Design\CADD Sheets\DD	2576-002-006-sh1-typical.sdw	DRAWN - M. MCEVERS	REVISED -			15-00007-00-SW	MORGAN	25	5	
Default	PLOT SCALE = 40.0000' / 1"	CHECKED - W. SLEEMAN	REVISED -			CONTRACT NO. 93653		ILLINOIS FED. AID PROJECT		
	PLOT DATE = 4/9/2015	DATE - 02/18/2015	REVISED -			SCALE:	SHEET 1 OF 2 SHEETS	STA.	TO STA.	

- ① EXISTING CONCRETE SIDEWALK (TO BE REMOVED UNLESS NOTED OTHERWISE)
- ② PROPOSED PORTLAND CEMENT CONCRETE SIDEWALK, 4 INCH
- ③ PROPOSED FINE AGGREGATE SUBBASE, 2" (COST TO BE INCLUDED IN PCC SIDEWALK)
- ④ CROSS SLOPE SHALL BE 1.5% NOMINAL (2% MAX) UNLESS OTHERWISE SHOWN
- ⑤ PROPOSED PORTLAND CEMENT CONCRETE SIDEWALK, 6 INCH
- ⑥ PROPOSED AGGREGATE SURFACE COURSE, TYPE B



TYPICAL SIDEWALK SECTION - ACROSS CONCRETE ENTRANCES
(EXCEPT TRANSITIONS)



TYPICAL SIDEWALK SECTION - ACROSS ASPHALT ENTRANCES
(EXCEPT TRANSITIONS)

NOTE:

② SAW CUT ASPHALT AND CONCRETE DRIVES ONLY. COST OF SAWING SHALL BE INCLUDED IN COST OF PORTLAND CEMENT CONCRETE SIDEWALK, 6 INCH.

FILE NAME >	USER NAME > #USER#	DESIGNED -	REVISED -	CITY OF WAVERLY SAFE ROUTES TO SCHOOLS PROGRAM	TYPICAL SECTIONS	F.A. RTE.	SECTION	COUNTY	TOTAL SHEETS	SHEET NO.
P:\14a2596\Design\Design\CADD Sheets\06	596-805-006-sh1-typical.dgn	DRAWN - M. MCEVERS	REVISED -			15-00007-00-SW	MORGAN	25	6	
Default	PLOT SCALE x 10.0000 1/16"	CHECKED - W. SLEEMAN	REVISED -			CONTRACT NO. 93653		ILLINOIS FED. AID PROJECT		
	PLOT DATE : 4/9/2015	DATE - 02/18/2015	REVISED -			SCALE:	SHEET 2 OF 2 SHEETS	STA.	TO STA.	

EARTHWORK

LOCATION STATION TO STATION	EARTH EXCAVATION CU YD	EARTH EXCAVATION ADJUSTED FOR SHRINKAGE* CU YD	EMBANKMENT (NOT A PAY ITEM) CU YD	EARTHWORK BALANCE** CU YD
STATE STREET (WEST)				
STA. 10+47.50 TO 15+57.80, RT. & LT.	31	23	5	+18
STATE STREET (EAST)				
STA. 20+00.00 TO 31+66.70, RT. & LT.	54	41	16	+25
MILLER STREET				
STA. 40+01.50 TO 49+55.00, RT. & LT.	47	35	9	+26
TOTAL	132	99	30	+69

*25% SHRINKAGE ASSUMED

**WASTE, UNLESS NOTED OTHERWISE (+) OR SHORTAGE (-)

REMOVAL SCHEDULE

LOCATION STATION TO STATION	DRIVEWAY PAVEMENT REMOVAL SQ YD	SIDEWALK REMOVAL SQ FT	PIPE CULVERT REMOVAL		
			FOOT	CULVERT TYPE	SIZE (INCH)
STATE STREET (WEST)					
STA. 10+47.50 TO 13+17.50, RT.		1620.0			
STA. 13+11.50 TO 13+17.50, LT.		13.2			
STA. 13+43.40 TO 15+58.00, RT.		1287.6	6	CMP	10
STA. 15+43.50 TO 15+47.50, LT.		12.0			
STATE STREET (EAST)					
STA. 20+00.00 TO 29+62.20, LT.	5.5	3799.6	6	CMP	10
STA. 21+86.60 TO 27+56.20, RT.		55.0			
STA. 29+40.40 TO 29+44.40, RT.		48.0			
STA. 29+40.40 TO 29+44.40, LT.		78.0			
STA. 29+48.00 TO 29+49.00, RT. & LT.			6	CMP	10
STA. 29+86.70 TO 31+66.70, LT.		748.0			
STA. 29+97.50 TO 29+97.50, RT. & LT.			12	CONC	12
STA. 30+05.00 TO 30+08.00, RT.		25.5			
STA. 30+50.60 TO 31+29.20, RT.		13.4			
MILLER STREET					
STA. 40+01.50 TO 43+18.00, LT.		1266.0			
STA. 40+86.50 TO 40+95.50, RT.	2.0				
STA. 42+64.00 TO 42+68.00, RT.		6.0			
STA. 43+47.00 TO 46+33.40, LT.		1101.6			
STA. 44+64.50 TO 44+82.50, RT.	3.0				
STA. 46+13.00 TO 46+17.00, RT.		200.0			
STA. 46+65.00 TO 49+55.00, LT.	5.0	1116.0			
STA. 49+33.50 TO 49+37.50, RT.		65.2			
TOTAL	15.5	11,455.1	30		

SIDEWALK SCHEDULE

LOCATION STATION TO STATION	PC CONC SIDEWALK 4 INCH	PC CONC SIDEWALK 6 INCH	DETECTABLE WARNINGS	AGGREGATE SURFACE COURSE, TYPE B
	SO FT	SO FT	SO FT	TON
STATE STREET (WEST)				
STA. 10+47.50 TO 13+17.50, RT.	1620.0		12	
STA. 13+11.50 TO 13+17.50, LT.	13.2			
STA. 13+43.40 TO 15+57.80, RT.	1286.4		12	
STATE STREET (EAST)				
STA. 20+00.00 TO 29+62.20, LT.	3180.6	579.5	8	4.7
STA. 21+86.60 TO 27+56.20, RT.	55.0			5.2
STA. 29+40.40 TO 29+44.40, LT.	78.0		8	
STA. 29+40.40 TO 29+44.40, RT.	48.0			
STA. 29+86.70 TO 31+66.70, LT.	657.0	68.0	8	0.7
STA. 30+04.50 TO 30+08.50, RT.	34.0			
STA. 30+50.60 TO 31+29.20, RT.	13.4			
STA. 31+44.00 TO 31+60.50, RT.				0.8
MILLER STREET				
STA. 40+01.50 TO 43+18.00, LT.	959.0	312.0	8	3.3
STA. 40+54.00 TO 42+45.00, RT.				3.1
STA. 42+64.80 TO 42+68.30, RT.	5.3			
STA. 43+47.00 TO 46+33.40, LT.	1038.6	130.0	16	0.9
STA. 43+58.00 TO 43+63.00, LT.	45.0		10	
STA. 46+13.00 TO 46+17.00, RT.	200.0			
STA. 46+65.00 TO 49+55.00, LT.	1061.0	104.0	16	0.7
STA. 48+58.00 TO 48+72.00, RT.				0.7
STA. 49+33.50 TO 49+37.50, RT.	65.2			
TOTAL	10,359.7	1193.5	98	20.1

INLET AND PIPE SCHEDULE

LOCATION STATION TO STATION	INLET AND PIPE PROTECTION EACH	PIPE CULV. CLASS D. TY. 1, 10"	PIPE CULV. CLASS D. TY. 1, 12"	STORM SEWERS CLASS B, TY. 1, 10"	INLETS, TY. A TY. 8 GRATE
		FOOT	FOOT	FOOT	EACH
STATE STREET (WEST)					
STA. 15+44.00 TO 15+50.50, RT.	1			6	
STA. 15+50.50, RT. & LT.	2			12	1
STATE STREET (EAST)					
STA. 29+37.50 TO 29+47.00, LT.	1	10			
STA. 29+49.00 TO 29+49.50, RT. & LT.	1	10			
STA. 29+97.50, RT. & LT.	2		20		
TOTAL	7	20	20	18	1

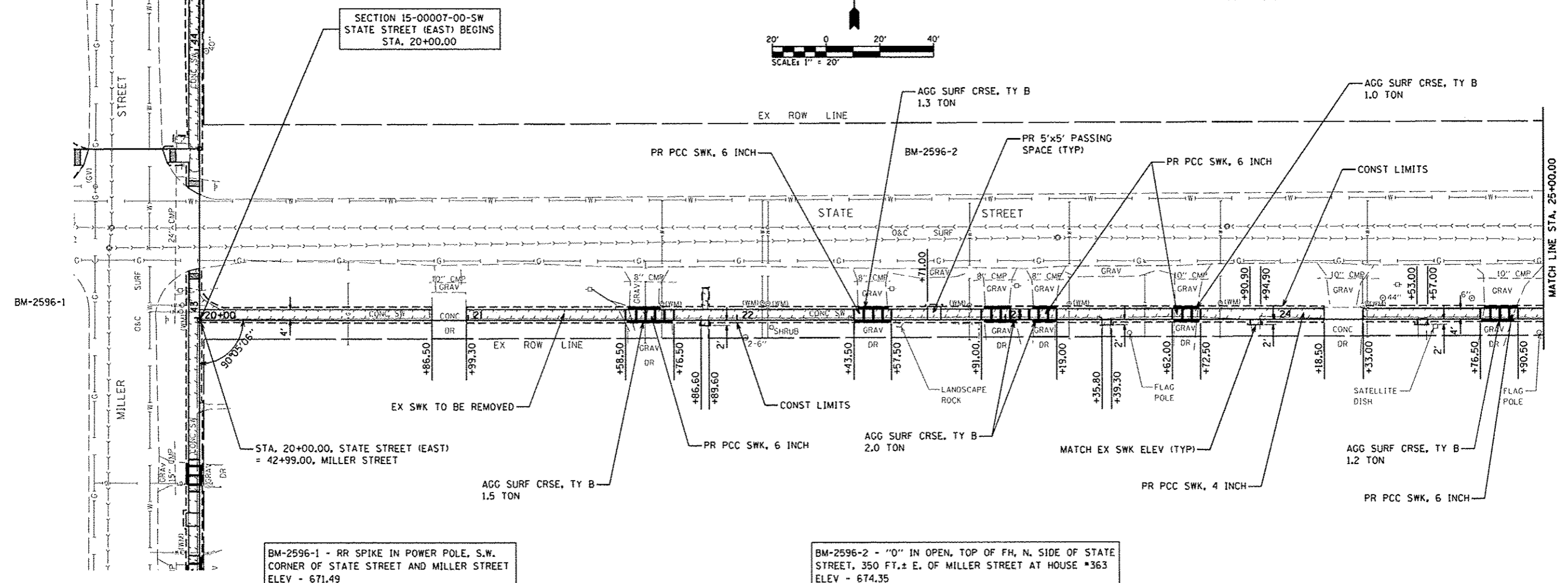
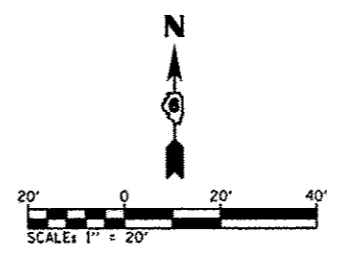
SEEDING SCHEDULE

LOCATION STATION TO STATION	SEEDING, CLASS 1	NITROGEN FERTILIZER NUTRIENT	PHOSPHORUS FERTILIZER NUTRIENT	POTASSIUM FERTILIZER NUTRIENT	MULCH, METHOD 2
	ACRE	POUND	POUND	POUND	ACRE
STATE STREET (WEST)					
STA. 10+47.50 TO 15+58.00, RT. & LT.	0.05	4.5	4.5	4.5	0.05
STATE STREET (EAST)					
STA. 20+00.00 TO 29+62.00, RT. & LT.	0.08	7.2	7.2	7.2	0.08
STA. 29+86.00 TO 31+67.00, RT. & LT.	0.02	1.8	1.8	1.8	0.02
MILLER STREET					
STA. 40+01.50 TO 43+18.00, RT. & LT.	0.02	1.8	1.8	1.8	0.02
STA. 43+47.00 TO 46+34.00, RT. & LT.	0.03	2.7	2.7	2.7	0.03
STA. 46+65.00 TO 49+55.00, RT. & LT.	0.03	2.7	2.7	2.7	0.03
TOTAL	0.23	20.7	20.7	20.7	0.23
USE	0.25	23	23	23	0.25

PLAN	REVISION	DATE
NO.	BY	
1		
2		
3		
4		
5		
6		
7		
8		
9		
10		

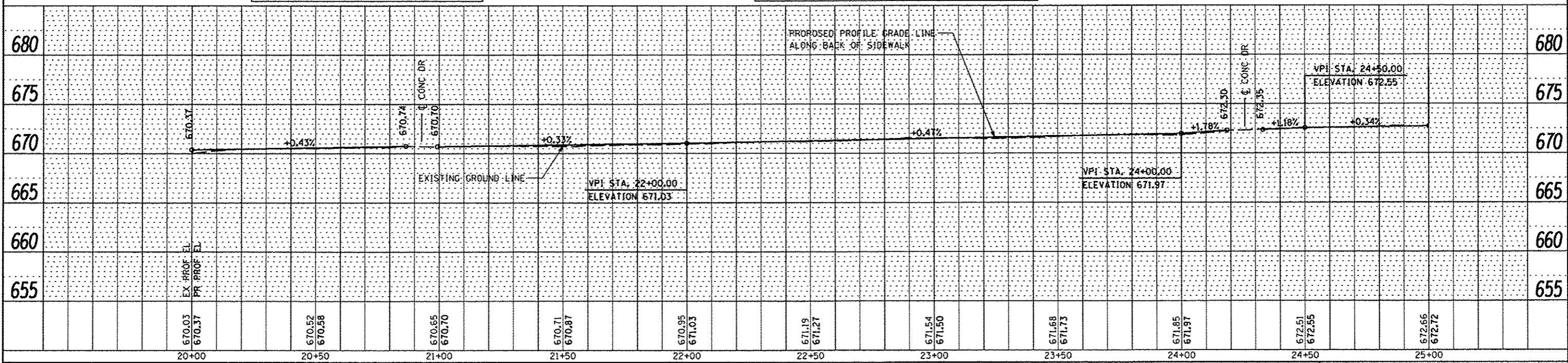
PROFILE	REVISION	DATE
NO.	BY	
1		
2		
3		
4		
5		
6		
7		
8		
9		
10		

TOTALS THIS SHEET
 EX SWK TO BE REMOVED - 1964 SF
 PR PCC SWK, 4 INCH - 1587 SF
 PR PCC SWK, 6 INCH - 338 SF



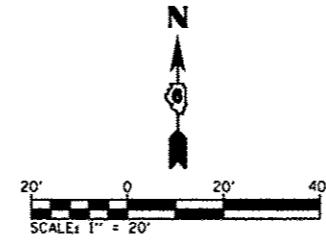
BM-2596-1 - RR SPIKE IN POWER POLE, S.W. CORNER OF STATE STREET AND MILLER STREET ELEV - 671.49

BM-2596-2 - "0" IN OPEN, TOP OF FH, N. SIDE OF STATE STREET, 350 FT.± E. OF MILLER STREET AT HOUSE #363 ELEV - 674.35



FILE NAME =	USER NAME = #USERS	DESIGNED - M. MCEVERS	REVISED -	CITY OF WAVERLY SAFE ROUTES TO SCHOOLS PROGRAM	PLAN AND PROFILE STATE STREET (EAST)	SCALE:	SHEET 1 OF 3 SHEETS	STA. TO STA.	F.A. RTE.	SECTION	COUNTY	TOTAL SHEETS	SHEET NO.
P:\142596\Design\Design\CADD Sheets\062596-018-012-shi-plnprf-state east.dgn		DRAWN - M. MCEVERS	REVISED -						15-00007-00-SW	MORGAN	25	10	
PLOT SCALE = 1/8" = 1' in.		CHECKED - W. SLEEMAN	REVISED -						CONTRACT NO. 93653				
PLOT DATE = 4/9/2015		DATE - 02/18/2015	REVISED -						ILLINOIS FED. AID PROJECT				

TOTALS THIS SHEET
 EX SWK TO BE REMOVED - 2295 SF
 EX CULV TO BE REMOVED - 24 FT
 PR PCC SWK, 4 INCH - 2062 SF
 PR PCC SWK, 6 INCH - 242 SF

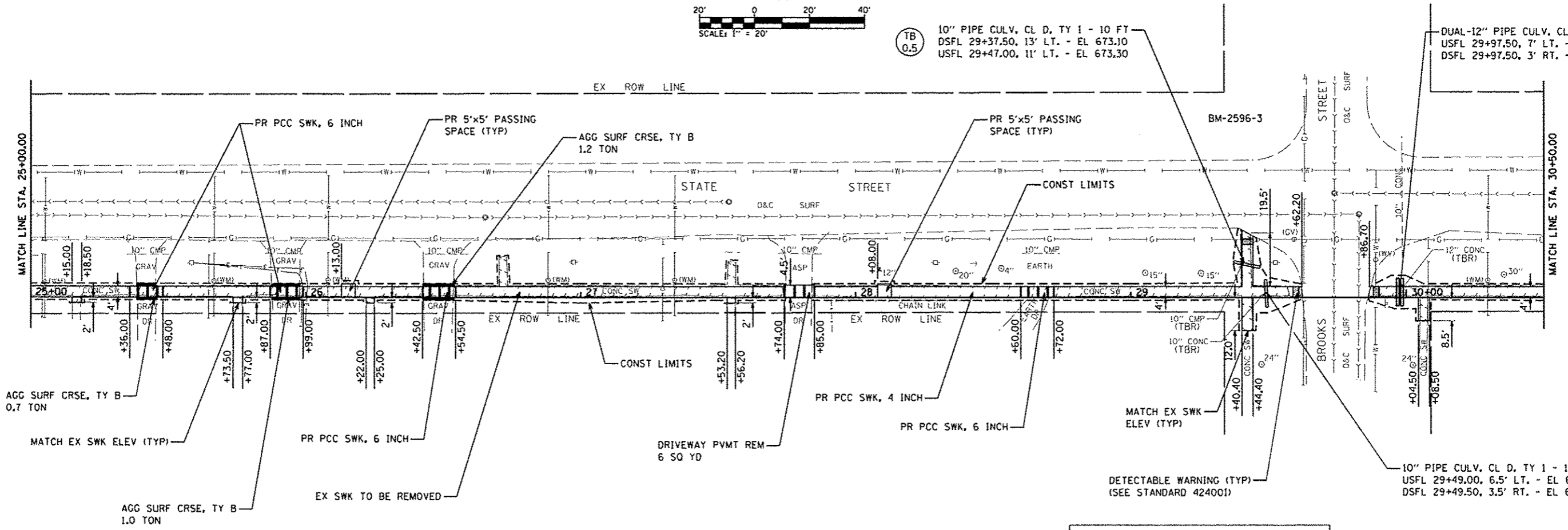


(TB 0.5) 10" PIPE CULV, CL D, TY 1 - 10 FT
 DSFL 29+37.50, 13' LT. - EL 673.10
 USFL 29+47.00, 11' RT. - EL 673.30

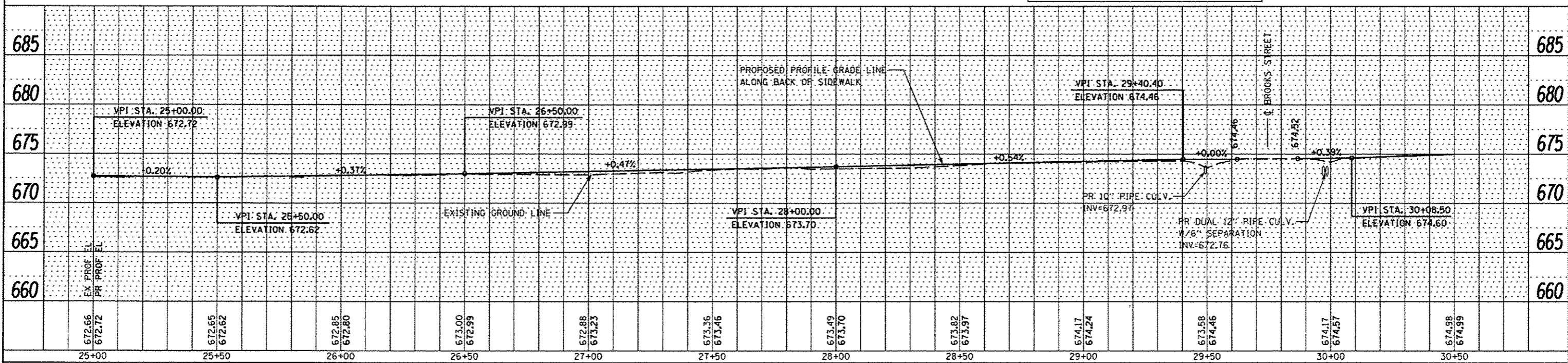
DUAL-12" PIPE CULV, CL D, TY 1 - 20 FT
 USFL 29+97.50, 7' LT. - EL 672.90
 DSFL 29+97.50, 3' RT. - EL 672.90

(TB 1)

(TB 0.5)



BM-2596-3 - "M" IN MUELLER, TOP OF FH, N.W. CORNER OF STATE STREET AND BROOKS STREET
 ELEV - 677.25

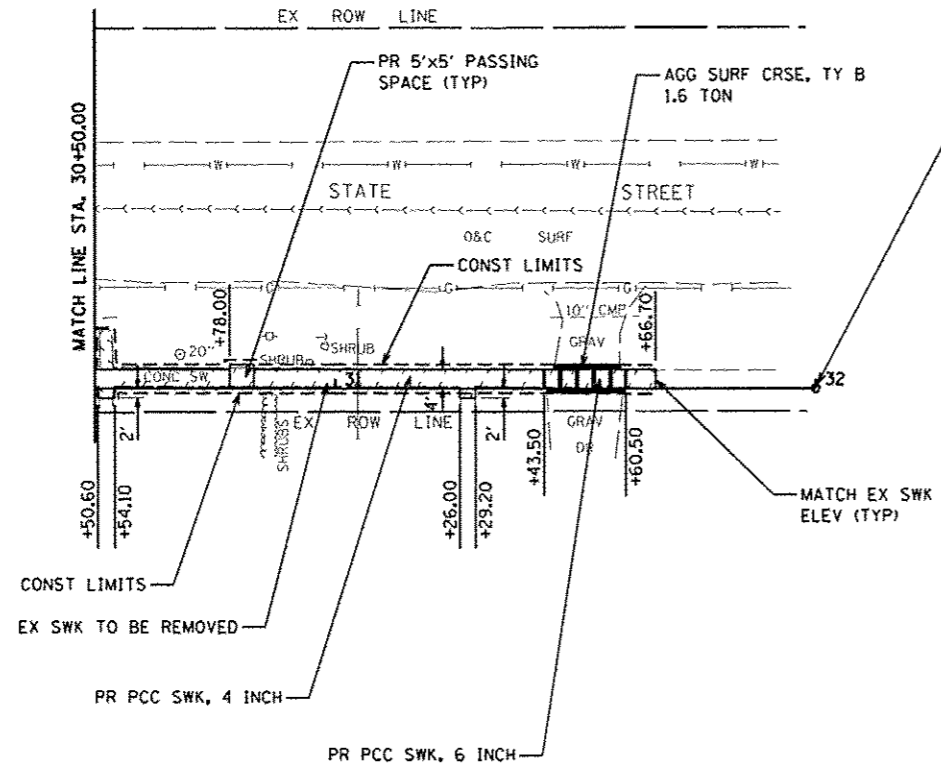
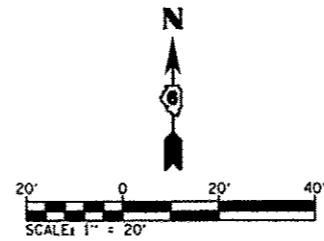


FILE NAME : P:\142596\Design\Design\CADD Sheets\062596-018-012-sht-pln-prf-state east.dgn	USER NAME : MUSER	DESIGNED - M. MCEVERS	REVISED -	CITY OF WAVERLY SAFE ROUTES TO SCHOOLS PROGRAM	PLAN AND PROFILE STATE STREET (EAST)	F.A. RTE.	SECTION	COUNTY	TOTAL SHEETS	SHEET NO.
PLLOT SCALE : 40.0000 / 1 in.	CHECKED - W. SLEEMAN	REVISED -	REVISED -			15-00007-00-SW	MORGAN	25	11	
PLLOT DATE : 4/9/2015	DATE - 02/18/2015	REVISED -	REVISED -			CONTRACT NO. 93653				
Default						ILLINOIS FED. AID PROJECT				

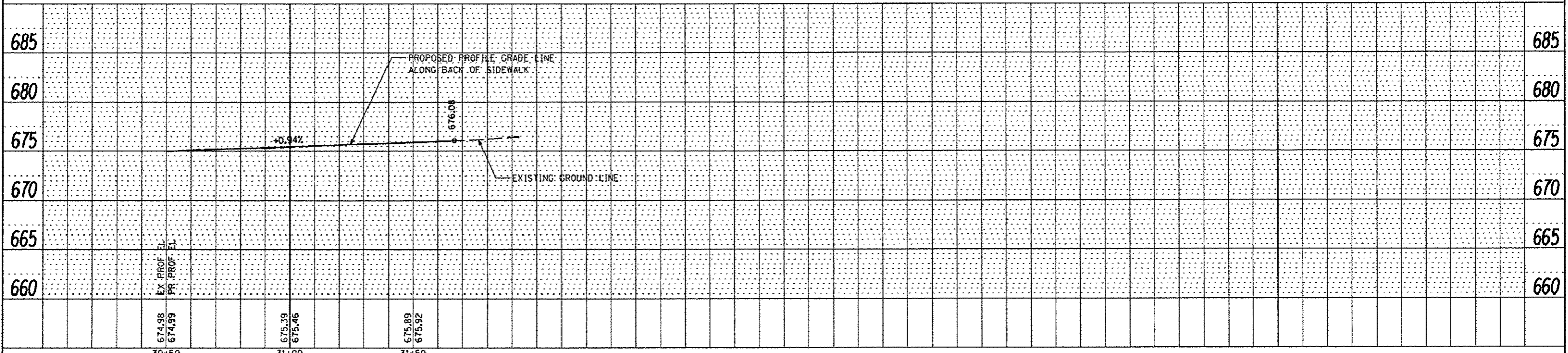
DATE	
BY	
BT	
PLAN	
NOTE SWK	
ALIGNED CROWN	
RT. OF WAY CHECKED	
NO. /	
ADD FILE NAME	

DATE	
BY	
BT	
PROFILE	
NOTE SWK	
ALIGNED CROWN	
RT. OF WAY CHECKED	
NO. /	
ADD FILE NAME	

TOTALS THIS SHEET
 EX SWK TO BE REMOVED - 508 SF
 PR PCC SWK, 4 INCH - 417 SF
 PR PCC SWK, 6 INCH - 68 SF



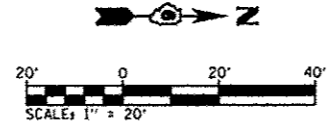
SECTION 15-00007-00-SW
 STATE STREET (EAST) ENDS
 STA. 32+00.00



DATE	
BY	
PLANNED	
CHECKED	
DATE	
NO.	

DATE	
BY	
PROFILING	
CHECKED	
DATE	
NO.	

FILE NAME = P:\14e2595\Design\Design\CADD Sheets\062515-010-012-sh1-plnpr-f-state east.dgn	USER NAME = #USER#	DESIGNED - M. MCEVERS	REvised -	CITY OF WAVERLY SAFE ROUTES TO SCHOOLS PROGRAM	PLAN AND PROFILE STATE STREET (EAST)	F.A. R.T.E.	SECTION	COUNTY	TOTAL SHEETS	SHEET NO.
PLLOT SCALE = 40.0000' / in.	CHECKED - W. SLEEMAN	REvised -				15-00007-00-SW	MORGAN	25	12	
PLLOT DATE = 4/9/2015	DATE - 02/18/2015	REvised -				CONTRACT NO. 93653		ILLINOIS FED. AID PROJECT		
Default						SCALE:	SHEET 3 OF 3 SHEETS	STA.	TO STA.	



TOTALS THIS SHEET
 EX SWK TO BE REMOVED - 2040 SF
 PR PCC SWK, 4 INCH - 1714 SF
 PR PCC SWK, 6 INCH - 442 SF

SECTION 15-00007-00-SW
 MILLER STREET BEGINS
 STA. 40+00.00

DETECTABLE WARNING (TYP)
 (SEE STANDARD 424001)

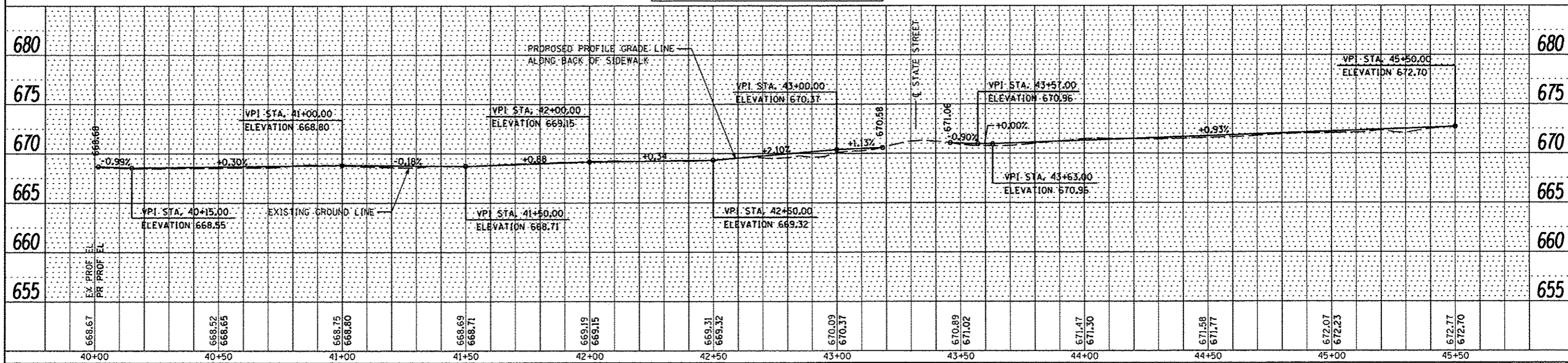
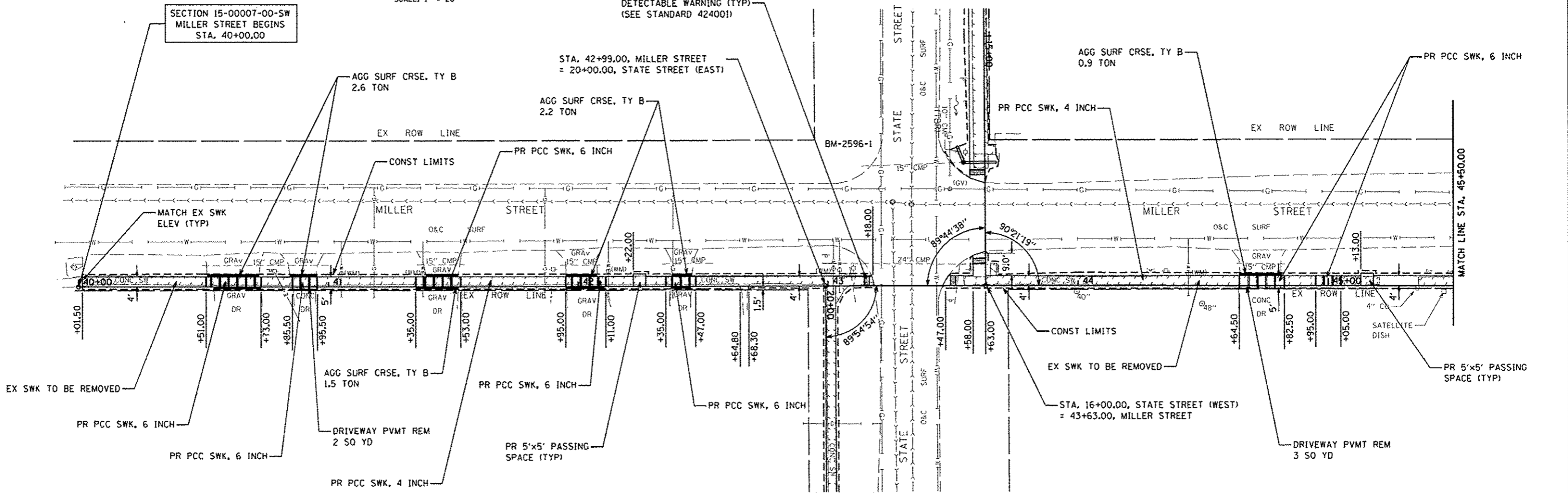
STA. 42+99.00, MILLER STREET
 = 20+00.00, STATE STREET (EAST)

AGG SURF CRSE, TY B
 0.9 TON

PR PCC SWK, 6 INCH

PLAN	SURVEYED	DATE
	DESIGNED	
	CHECKED	
	NOTED	
	BY	
	NO.	

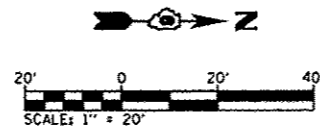
PROFILE	SURVEYED	DATE
	DESIGNED	
	CHECKED	
	NOTED	
	BY	
	NO.	



FILE NAME: P:\142596\Design\Design\CADD Sheets\062536-013-014-sht-plan-prf-miller.dgn	USER NAME: *USER*	DESIGNED: M. MCEVERS	REVISED:	CITY OF WAVERLY SAFE ROUTES TO SCHOOLS PROGRAM	PLAN AND PROFILE MILLER STREET	F.A. RTE.	SECTION	COUNTY	TOTAL SHEETS	SHEET NO.
PLOT SCALE: = 40.0000' / in.	CHECKED: W. SLEEMAN	REVISED:				15-00007-00-SW	MORGAN	25	13	
PLOT DATE: = 4/9/2015	DATE: 02/18/2015	REVISED:				CONTRACT NO. 93653				
						ILLINOIS FED. AID PROJECT				

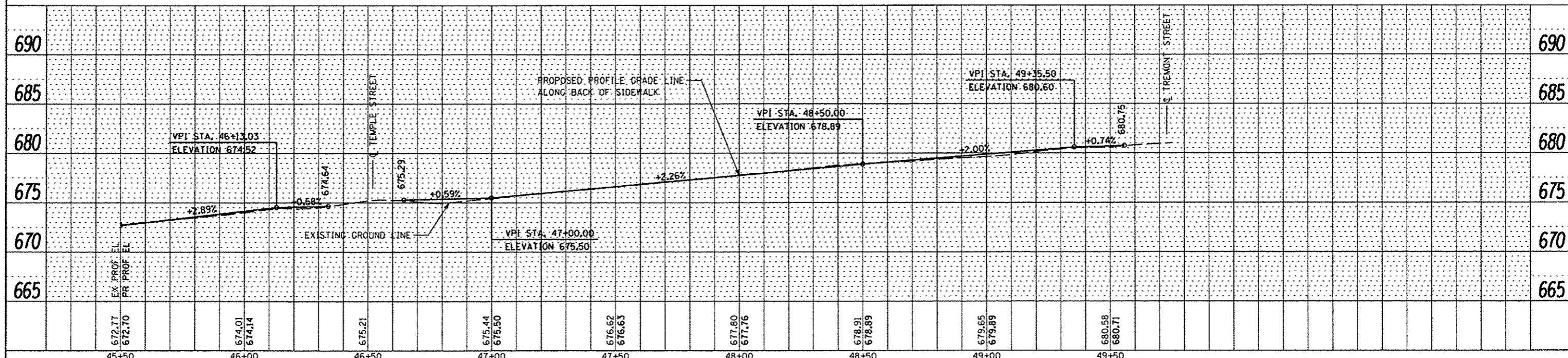
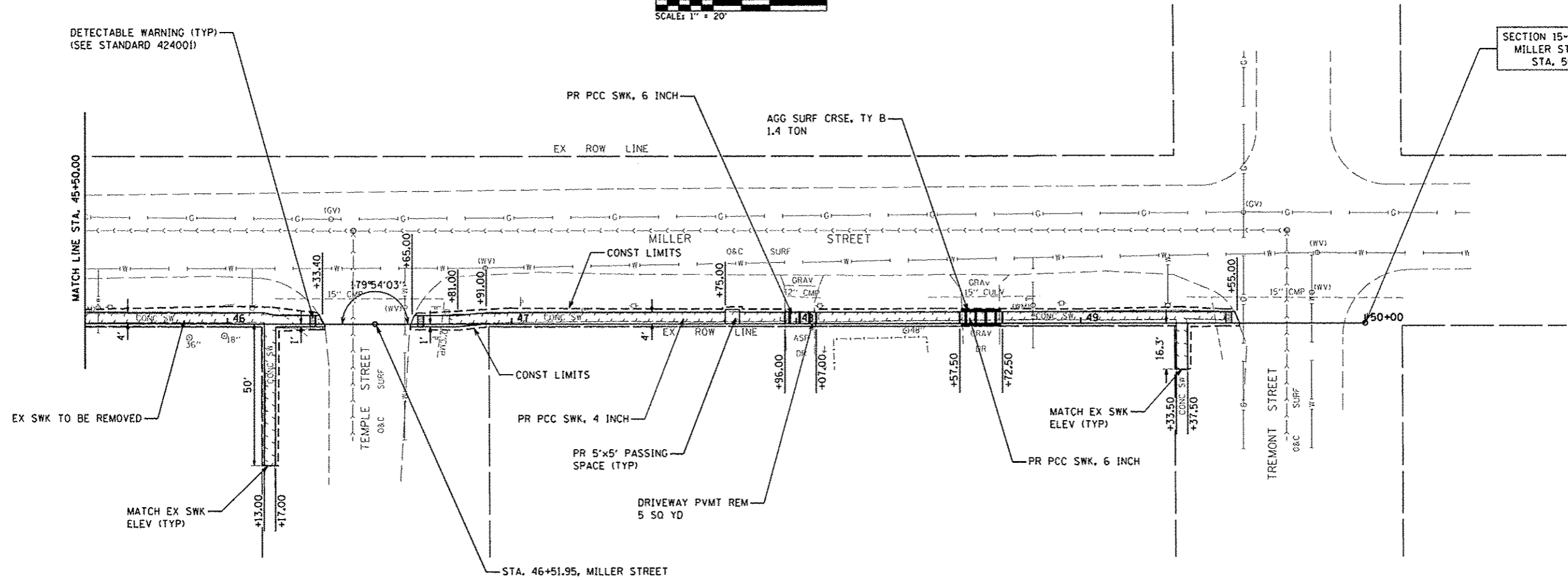
TOTALS THIS SHEET

EX SWK TO BE REMOVED - 1715 SF
 PR PCC SWK, 4 INCH - 1660 SF
 PR PCC SWK, 6 INCH - 104 SF



DETECTABLE WARNING (TYP)
 (SEE STANDARD 424001)

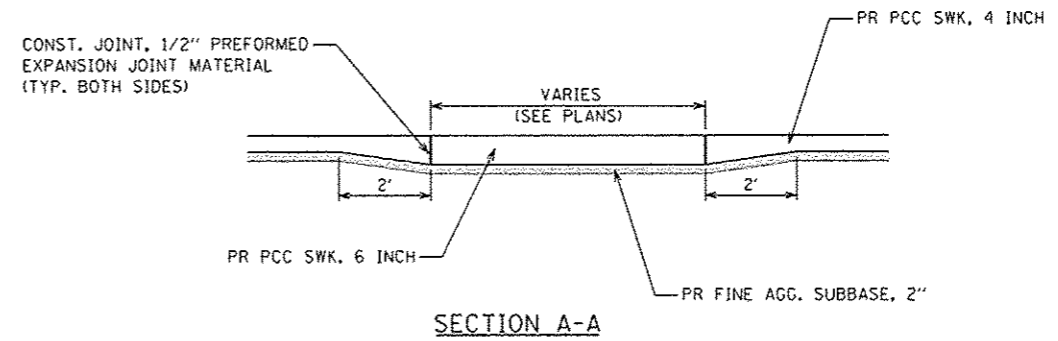
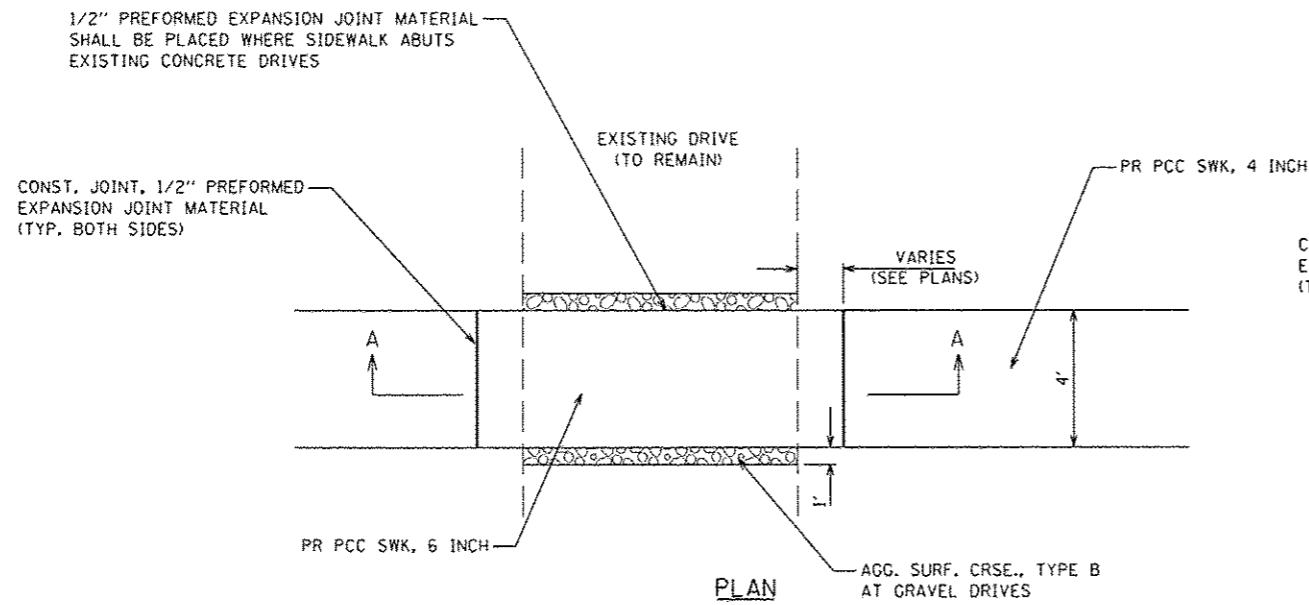
SECTION 15-00007-00-SW
 MILLER STREET ENDS
 STA. 50+00.00



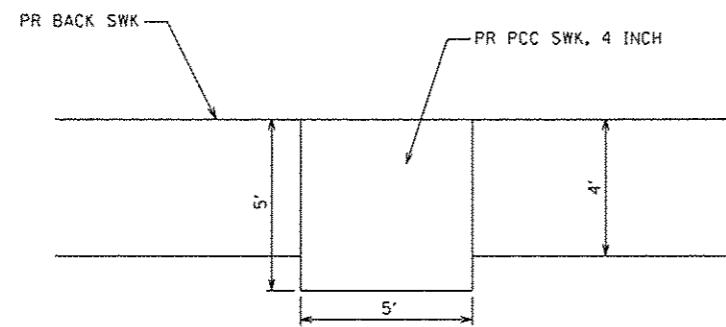
DATE	
BY	
PLAN	
DATE	
BY	
NOTE BOOK	
NO.	
ADD FILE NAME	

DATE	
BY	
PROFILE	
DATE	
BY	
NOTE BOOK	
NO.	
STRUCTURE NOTATIONS DATED	

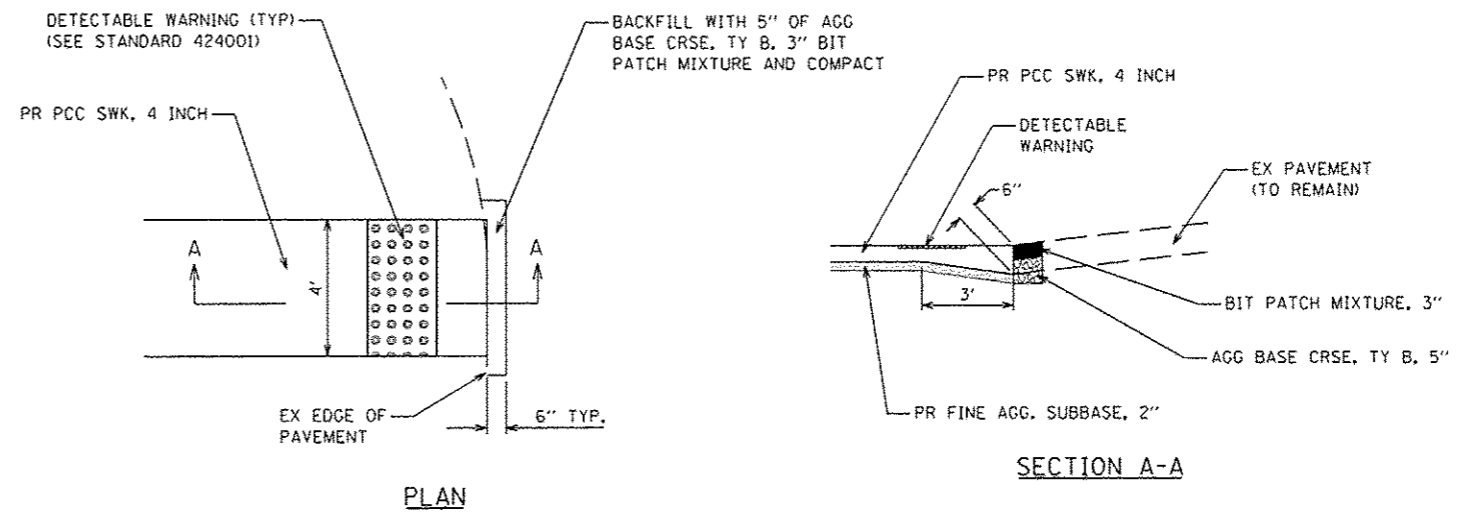
FILE NAME =	USER NAME =	DESIGNED -	REVISED -	CITY OF WAVERLY SAFE ROUTES TO SCHOOLS PROGRAM	PLAN AND PROFILE MILLER STREET	F.A. RTE.	SECTION	COUNTY	TOTAL SHEETS	SHEET NO.
P:\142596\Design\Design\CADD Sheets\062515-013-014-sht-pln-prf-miller.dgn	#USER*	M. MCEVERS				15-00007-00-SW	MORGAN	25	14	
PLOT SCALE = 40.0000' / in.	CHECKED -	W. SLEEMAN				CONTRACT NO. 93653		ILLINOIS FED. AID PROJECT		
Default	DATE -	02/18/2015				SCALE:	SHEET 2 OF 2 SHEETS	STA.	TO STA.	



PROPOSED PCC SIDEWALK TRANSITION DETAIL ACROSS DRIVES
NOT TO SCALE



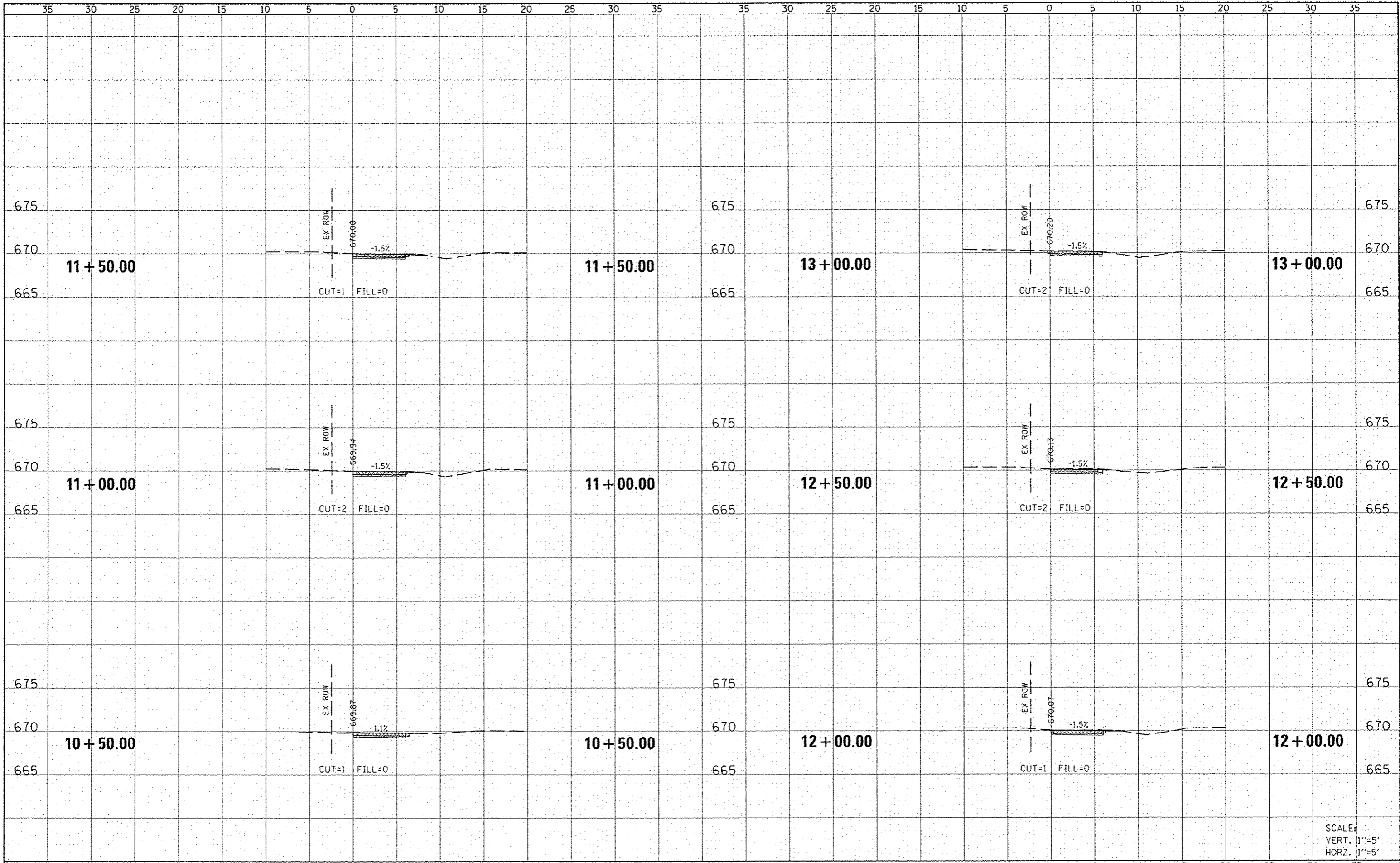
PROPOSED PCC SIDEWALK PASSING SPACE DETAIL
NOT TO SCALE



NOTE: COST OF ADDED THICKNESS OF SWK AT EDGE OF EX PAVEMENT AND THE AGGREGATE BASE COURSE, TYP. B CAPPED WITH BIT. PATCH MIXTURES SHALL BE INCLUDED IN THE COST OF PORTLAND CEMENT CONCRETE SIDEWALK, 4 INCH

PROPOSED PCC SIDEWALK END ABUTTING EXISTING ROADWAY DETAIL
NOT TO SCALE

FILE NAME =	USER NAME = #USERS	DESIGNED -	REVISED -	CITY OF WAVERLY SAFE ROUTES TO SCHOOLS PROGRAM	CONSTRUCTION DETAILS		F.A. RTE.	SECTION	COUNTY	TOTAL SHEETS	SHEET NO.
P:\14e2596\Design\Design\CADD Sheets\061596-015-shs-const details.dgn	DESIGNED - M. MCEVERS	REVISED -					15-00007-00-SW	MORGAN	25	15	
PLOT SCALE = 40,0000' / in.	CHECKED - W. SLEEMAN	REVISED -			SCALE: SHEET 1 OF 1 SHEETS STA. TO STA.		CONTRACT NO. 93653				
Default	DATE - 02/18/2015	REVISED -			ILLINOIS FED. AID PROJECT						



SCALE:
 VERT. 1"=5'
 HORZ. 1"=5'

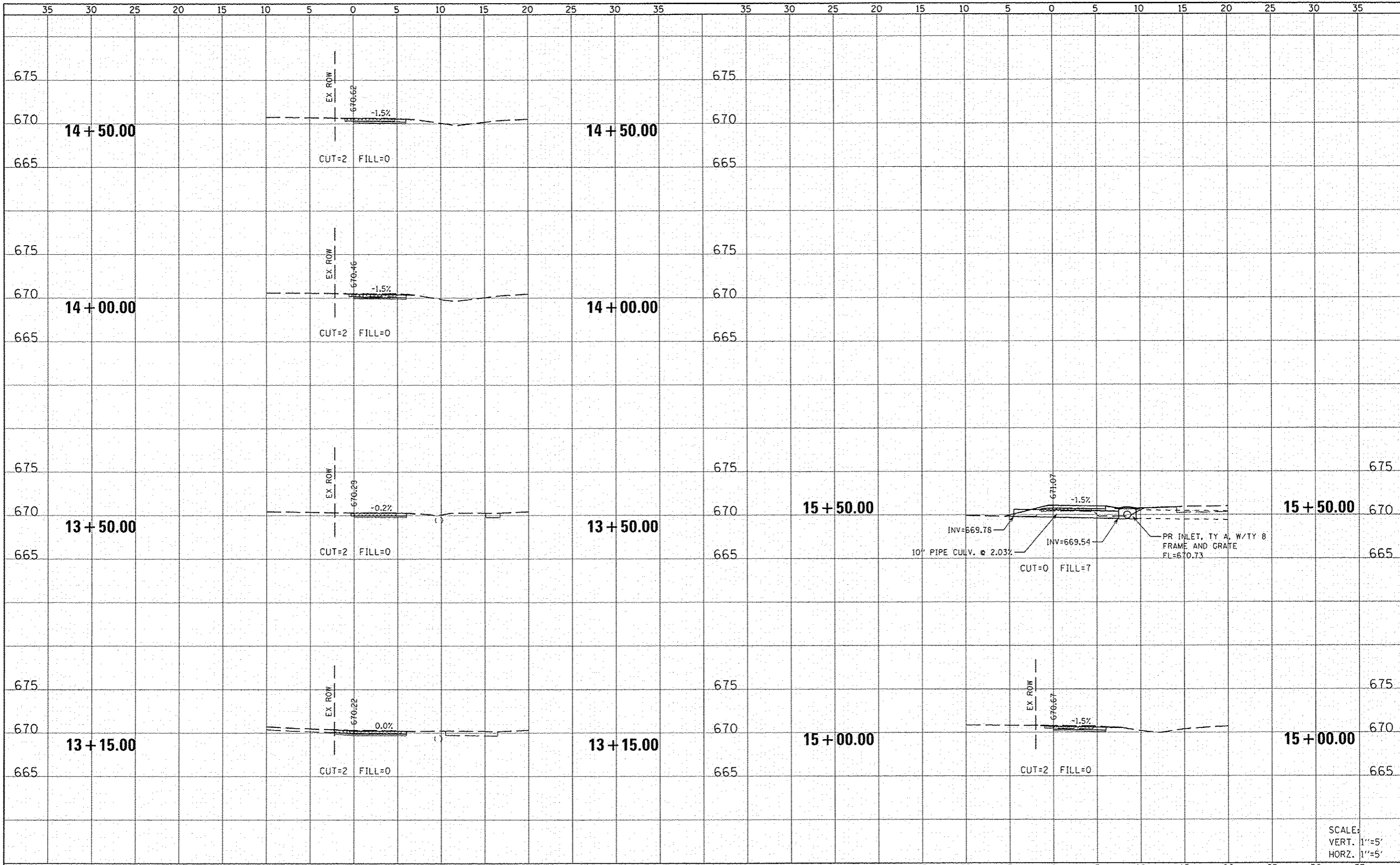
DATE	
BY	
DESIGNED	
DRAWN	
CHECKED	
DATE	
FILE NAME	
USER NAME	
DESIGNED	
DRAWN	
CHECKED	
DATE	

DATE	
BY	
DESIGNED	
DRAWN	
CHECKED	
DATE	
FILE NAME	
USER NAME	
DESIGNED	
DRAWN	
CHECKED	
DATE	

FILE NAME	USER NAME	DESIGNED	REVISED	CITY OF WAVERLY SAFE ROUTES TO SCHOOLS PROGRAM	STATE STREET (WEST) CROSS SECTIONS	SCALE: SHEET 1 OF 2 SHEETS STA. 10+50.00 TO STA. 13+00.00	ILLINOIS FED. AID PROJECT
P:\1462595\Design\Design\CADD Sheets\0622190-01	#USER#	M. MCEVERS	-				
P:\1462595\Design\Design\CADD Sheets\0622190-01		M. MCEVERS	-				
		W. SLEEMAN	-				
Default		DATE	REVISED				
		02/18/2015	-				

DATE	
BY	
FINISHED	
SURVEY	
PLOTTED	
NOTE BOOK	
AREAS CHECKED	

DATE	
BY	
FINISHED	
SURVEY	
PLOTTED	
NOTE BOOK	
AREAS CHECKED	

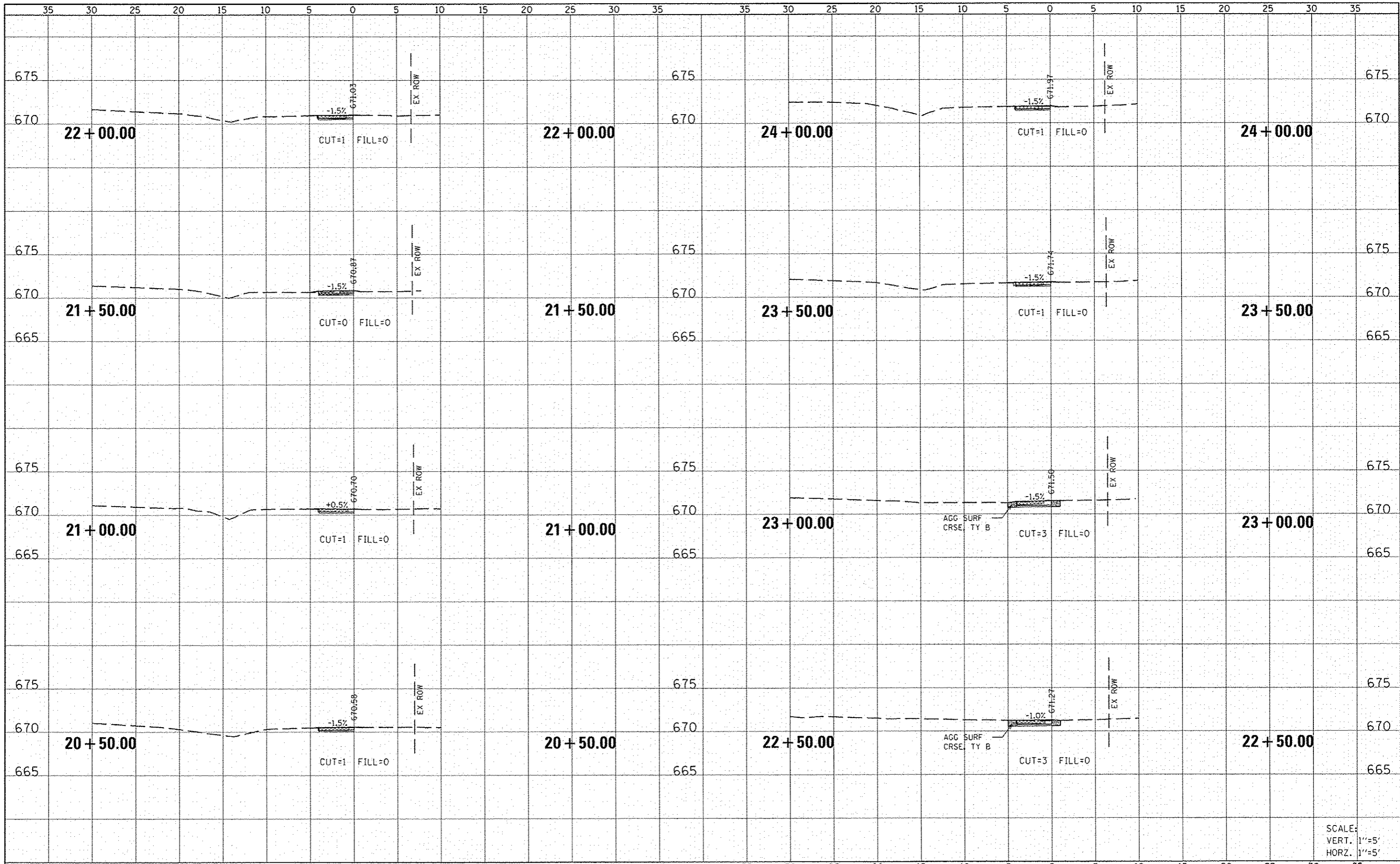


SCALE:
VERT. 1"=5'
HORZ. 1"=5'

FILE NAME P:\142596\Design\Design\G00 Sheets\062596-01	USER NAME #USER#	DESIGNED M. MCEVERS	REVISIONS -	CITY OF WAVERLY SAFE ROUTES TO SCHOOLS PROGRAM	STATE STREET (WEST) CROSS SECTIONS			F.A. RTE.	SECTION 15-00007-00-SW	COUNTY MORGAN	TOTAL SHEETS 25	SHEET NO. 17
Default	Plot Scale 10.0000 / in.	CHECKED W. SLEEMAN	REVISIONS -		SCALE:	SHEET 2 OF 2 SHEETS	STA. 13+15.00 TO STA. 15+50.00	CONTRACT NO. 93653				
	Plot Date 4/9/2015	DATE 02/18/2015	REVISIONS -		ILLINOIS FED. AID PROJECT							

DATE	
BY	
FINAL SURVEY	
TEMPLATE	
NOTE BOOK	
AREAS CHECKED	
NO.	

DATE	
BY	
ORIGINAL SURVEY	
TEMPLATE	
NOTE BOOK	
AREAS CHECKED	
NO.	

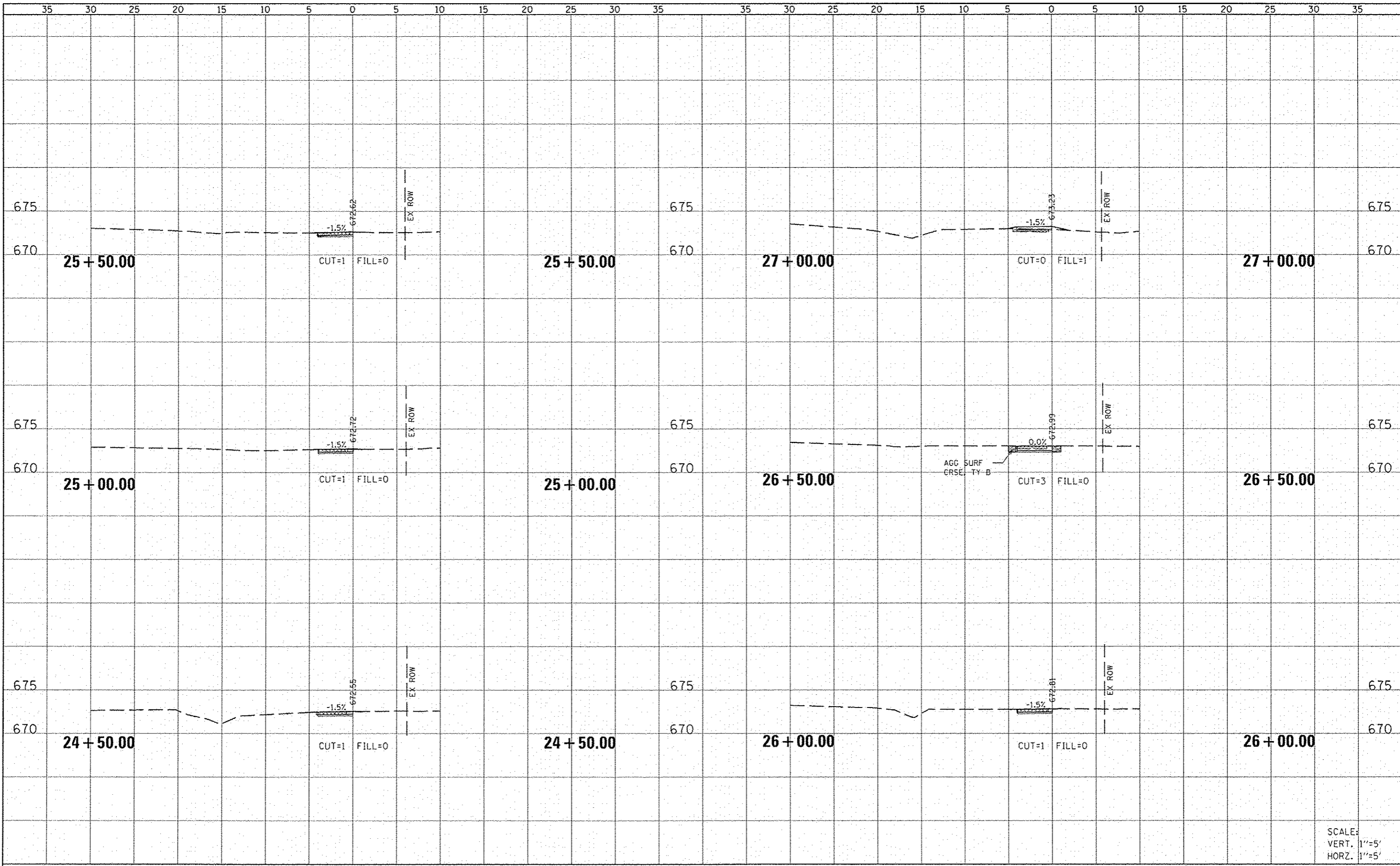


SCALE:
VERT. 1"=5'
HORIZ. 1"=5'

FILE NAME =	USER NAME = #USER#	DESIGNED - M. MCEVERS	REVISED -	CITY OF WAVERLY SAFE ROUTES TO SCHOOLS PROGRAM	STATE STREET (EAST) CROSS SECTIONS			F.A. RTE.	SECTION	COUNTY	TOTAL SHEETS	SHEET NO.
P:\14e2596\Design\CADD Sheets\062596-01	021-shi-ssht-state east.dgn	DRAWN - M. MCEVERS	REVISED -		15-00007-00-SW	MORGAN	25	18				
Default	PLOT SCALE = 10.0000' / 1"	CHECKED - W. SLEEMAN	REVISED -		SCALE: SHEET 1 OF 4 SHEETS STA. 20+50.00 TO STA. 24+00.00			CONTRACT NO. 93653				
	PLOT DATE = 4/9/2015	DATE - 02/18/2015	REVISED -		ILLINOIS FED. AID PROJECT							

DATE	
BY	
DESIGNED	
DRAWN	
CHECKED	
DATE	
NO.	

DATE	
BY	
DESIGNED	
DRAWN	
CHECKED	
DATE	
NO.	

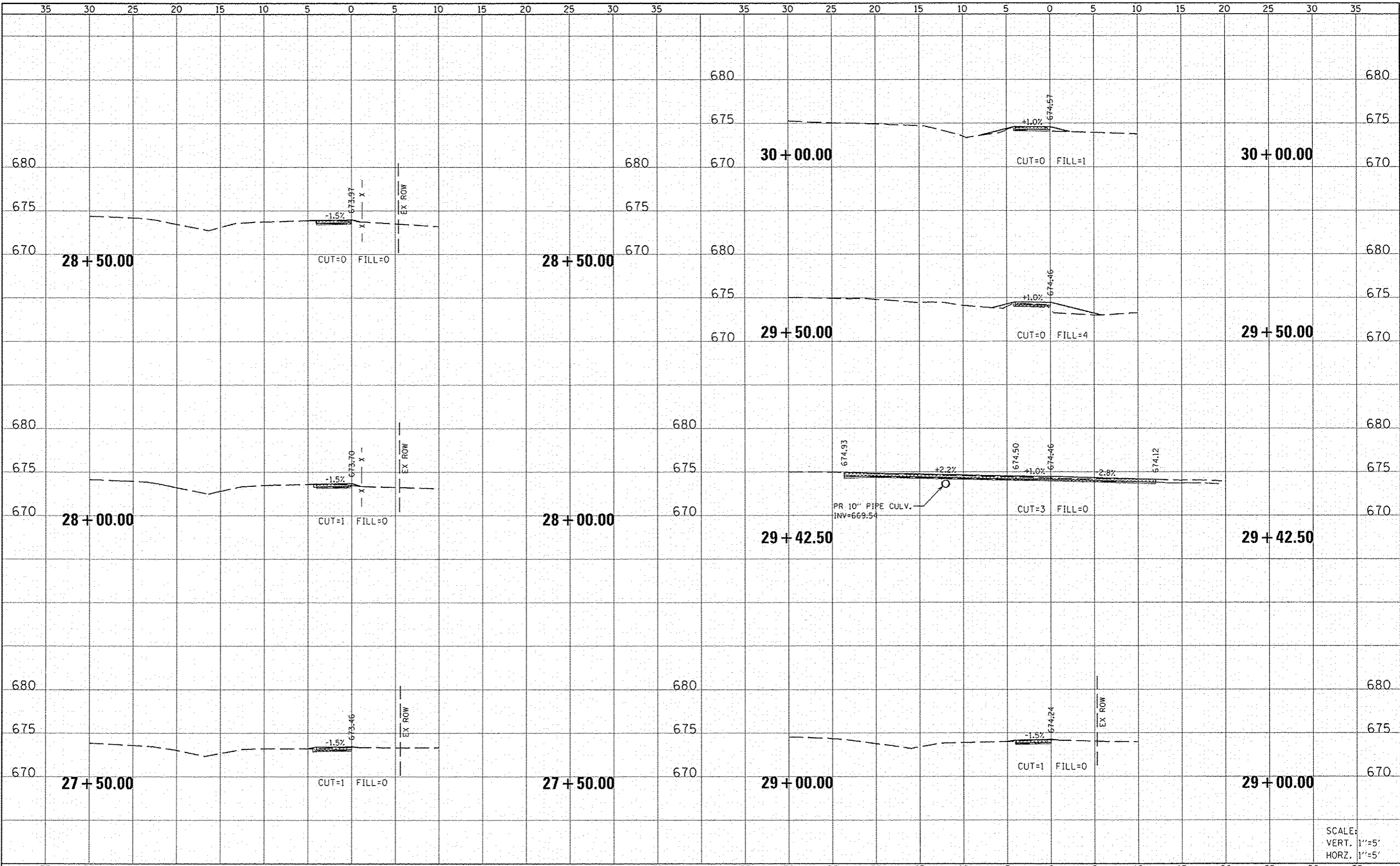


SCALE:
 VERT. 1"=5'
 HORZ. 1"=5'

FILE NAME =	USER NAME = MCEVER	DESIGNED - M. MCEVERS	REVISED -	CITY OF WAVERLY SAFE ROUTES TO SCHOOLS PROGRAM	STATE STREET (EAST) CROSS SECTIONS	F.A. RTE.	SECTION	COUNTY	TOTAL SHEETS	SHEET NO.
P:\1402596\Design\Design\CADD Sheets\062596-01	021-sht-ssst-state east.dgn	DRAWN - M. MCEVERS	REVISED -			15-00007-00-SW	MORCAN	25	19	
Default	PLOT SCALE = 10.0000' / in.	CHECKED - W. SLEEMAN	REVISED -			CONTRACT NO. 93653				
	PLOT DATE = 4/9/2015	DATE - 02/18/2015	REVISED -			[ILLINOIS] FED. AID PROJECT				
					SCALE:	SHEET 2 OF 4 SHEETS		STA. 24+50.00 TO STA. 27+00.00		

DATE	
BY	
DESIGNED	
DRAWN	
CHECKED	
DATE	
NO.	

DATE	
BY	
DESIGNED	
DRAWN	
CHECKED	
DATE	
NO.	

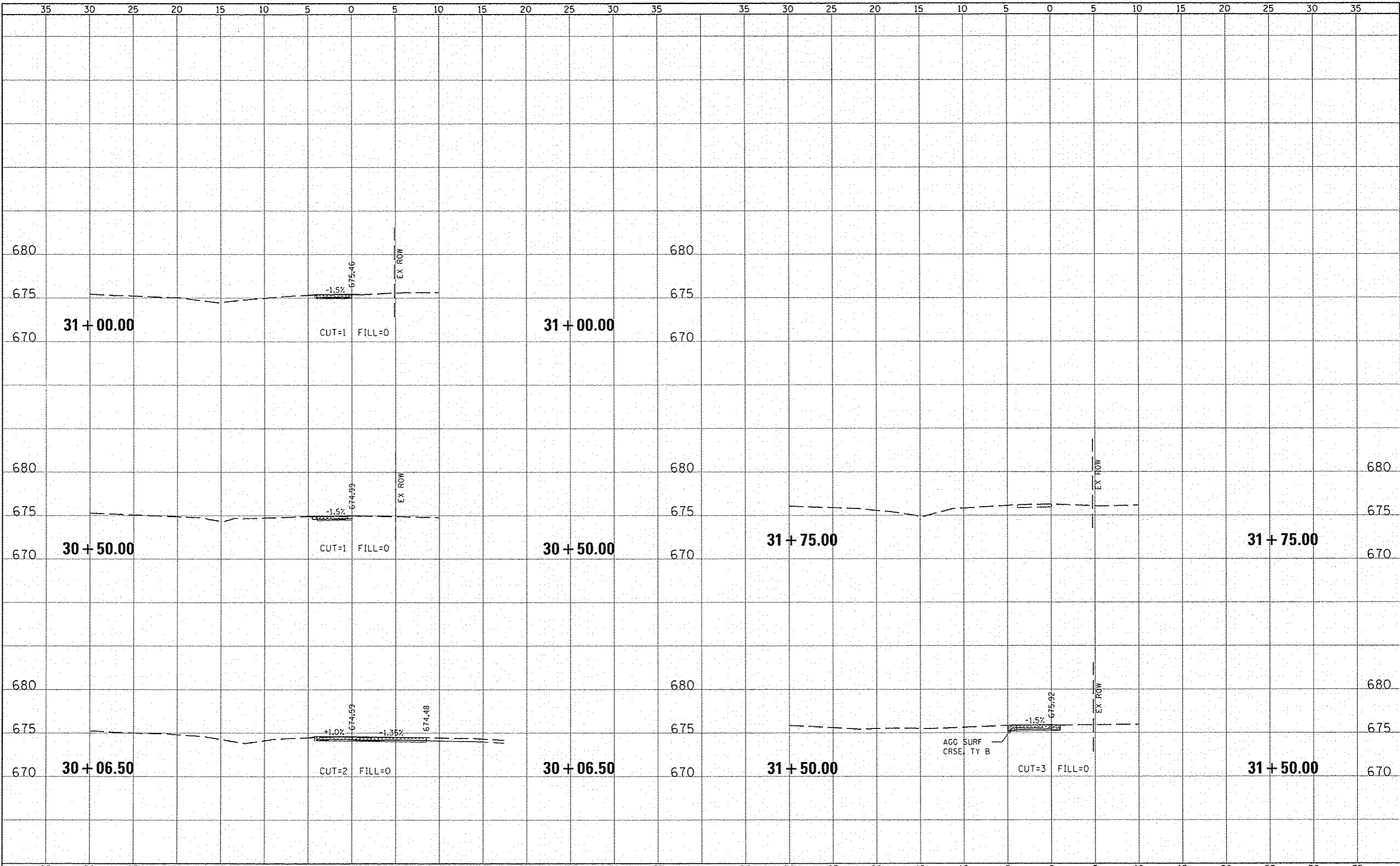


SCALE:
VERT. 1"=5'
HORZ. 1"=5'

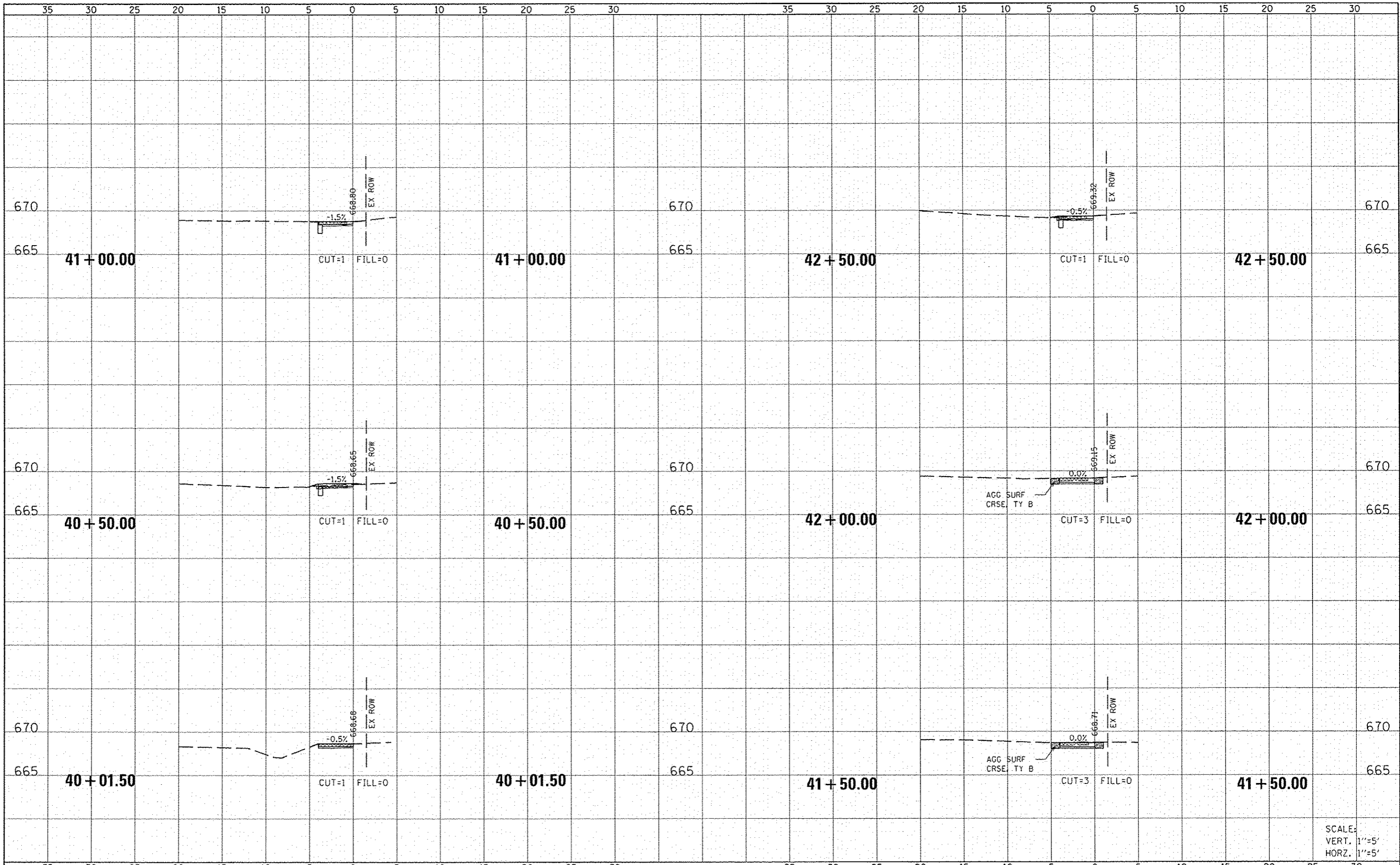
FILE NAME: P:\142596\Design\Design\CADD Sheets\062596-01	USER NAME: USER	DESIGNED: M. MCEVERS	REVISED:	CITY OF WAVERLY SAFE ROUTES TO SCHOOLS PROGRAM	STATE STREET (EAST) CROSS SECTIONS			F.A. RTE.	SECTION	COUNTY	TOTAL SHEETS	SHEET NO.
PLT SCALE: 10.0000' / 1"	PLT DATE: 4/9/2015	DRAWN: M. MCEVERS	REVISED:		SCALE:	SHEET 3 OF 4 SHEETS	STA. 27+50.00 TO STA. 30+00.00	15-00007-00-SW	MORGAN	25	20	
DATE: 02/18/2015	DATE: 02/18/2015	CHECKED: W. SLEEMAN	REVISED:					CONTRACT NO. 93653			ILLINOIS FED. AID PROJECT	
		DATE: 02/18/2015	REVISED:									

DATE	
BY	
DESIGNED	
DRAWN	
CHECKED	
DATE	
FILE NAME	
USER NAME	
DESIGNED	
DRAWN	
CHECKED	
DATE	

DATE	
BY	
DESIGNED	
DRAWN	
CHECKED	
DATE	
FILE NAME	
USER NAME	
DESIGNED	
DRAWN	
CHECKED	
DATE	



FILE NAME	USER NAME	DESIGNED	REVISED	<p align="center">CITY OF WAVERLY SAFE ROUTES TO SCHOOLS PROGRAM</p>	<p align="center">STATE STREET (EAST) CROSS SECTIONS</p>	F.A. RTE.	SECTION	COUNTY	TOTAL SHEETS	SHEET NO.
Pr:\14e2996\Design\Design\CADD Sheets\062596-01	821-shi-ssht-stete east.dgn	M. MCEVERS				15-00007-00-SW	MORGAN	25	21	
PLT SCALE = 10,0000 1/2 in.	CHECKED	W. SLEEMAN	REVISED			CONTRACT NO. 93653		ILLINOIS FED. AID PROJECT		
PLT DATE = 4/9/2015	DATE	02/18/2015	REVISED			SCALE:	SHEET 4 OF 4 SHEETS	STA. 30+06.50 TO STA. 31+75.00		



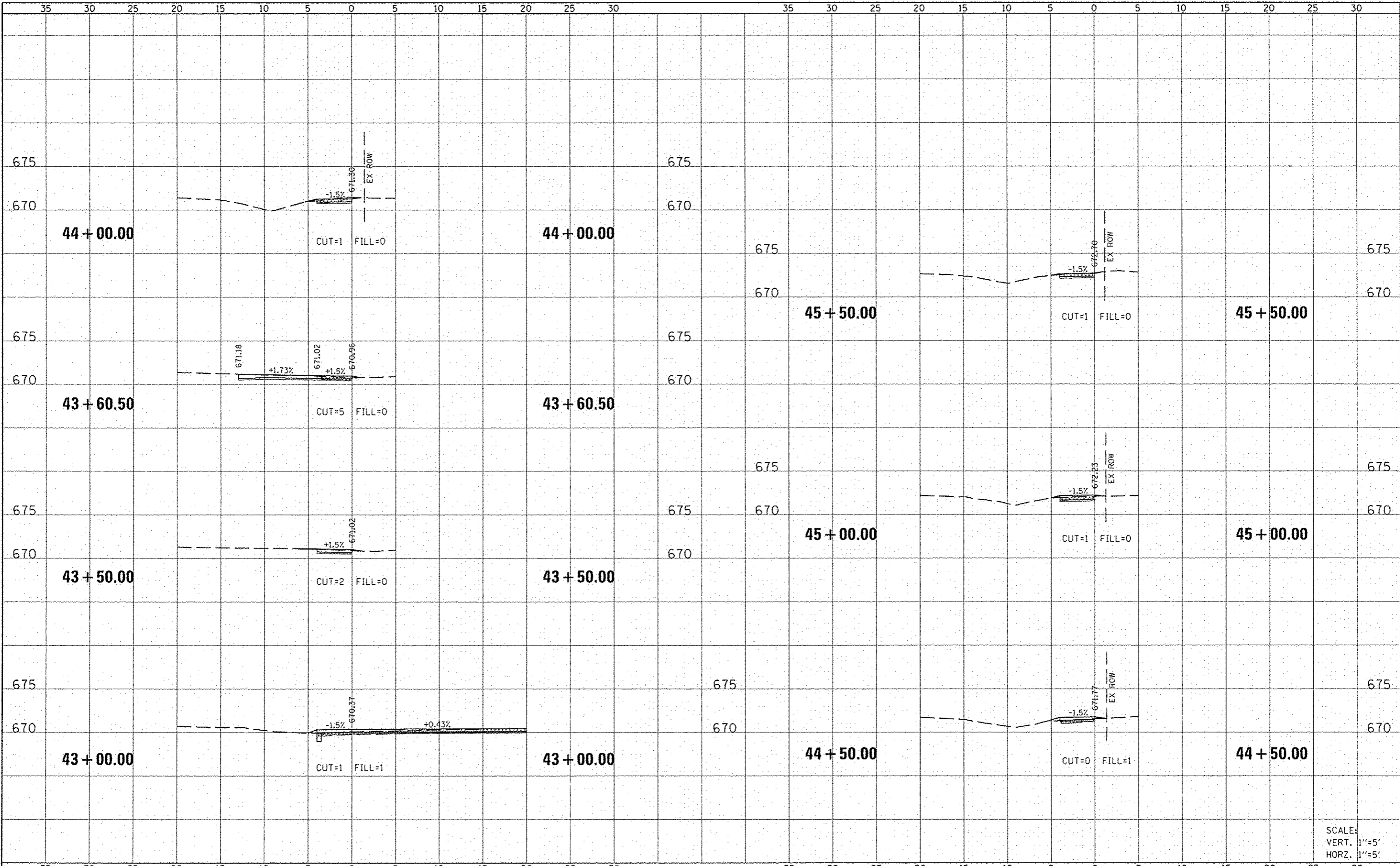
DATE	
BY	
NO.	
AREAS CHECKED	
TEMP. DATE	
NOTE BOOK	
NO.	
ORIGINAL SURVEY	
NO.	
DATE	
BY	
NO.	
AREAS CHECKED	
TEMP. DATE	
NOTE BOOK	
NO.	
ORIGINAL SURVEY	
NO.	
DATE	
BY	
NO.	
AREAS CHECKED	

DATE	
BY	
NO.	
AREAS CHECKED	
TEMP. DATE	
NOTE BOOK	
NO.	
ORIGINAL SURVEY	
NO.	
DATE	
BY	
NO.	
AREAS CHECKED	
TEMP. DATE	
NOTE BOOK	
NO.	
ORIGINAL SURVEY	
NO.	
DATE	
BY	
NO.	
AREAS CHECKED	

FILE NAME : P:\14e2596\Design\Design\CADD Sheets\062596-02\025-shr-wsht-miller.dgn	USER NAME : AUSER4	DESIGNED - M. MCEVERS	REVISED -	CITY OF WAVERLY SAFE ROUTES TO SCHOOLS PROGRAM	MILLER STREET CROSS SECTIONS				SCALE: VERT. 1"=5' HORZ. 1"=5'
PLT SCALE : 10.0000' / in.	PLDT DATE : 4/9/2015	DRAWN - M. MCEVERS	REVISED -		SECTION : 15-00007-00-SW	COUNTY : MORGAN	TOTAL SHEETS : 25	SHEET NO. : 22	
PLDT DATE : 4/9/2015	DATE : 02/18/2015	CHECKED - W. SLEEMAN	REVISED -		CONTRACT NO. 93653				
PLDT DATE : 4/9/2015	DATE : 02/18/2015	DATE : 02/18/2015	REVISED -		ILLINOIS FED. AID PROJECT				

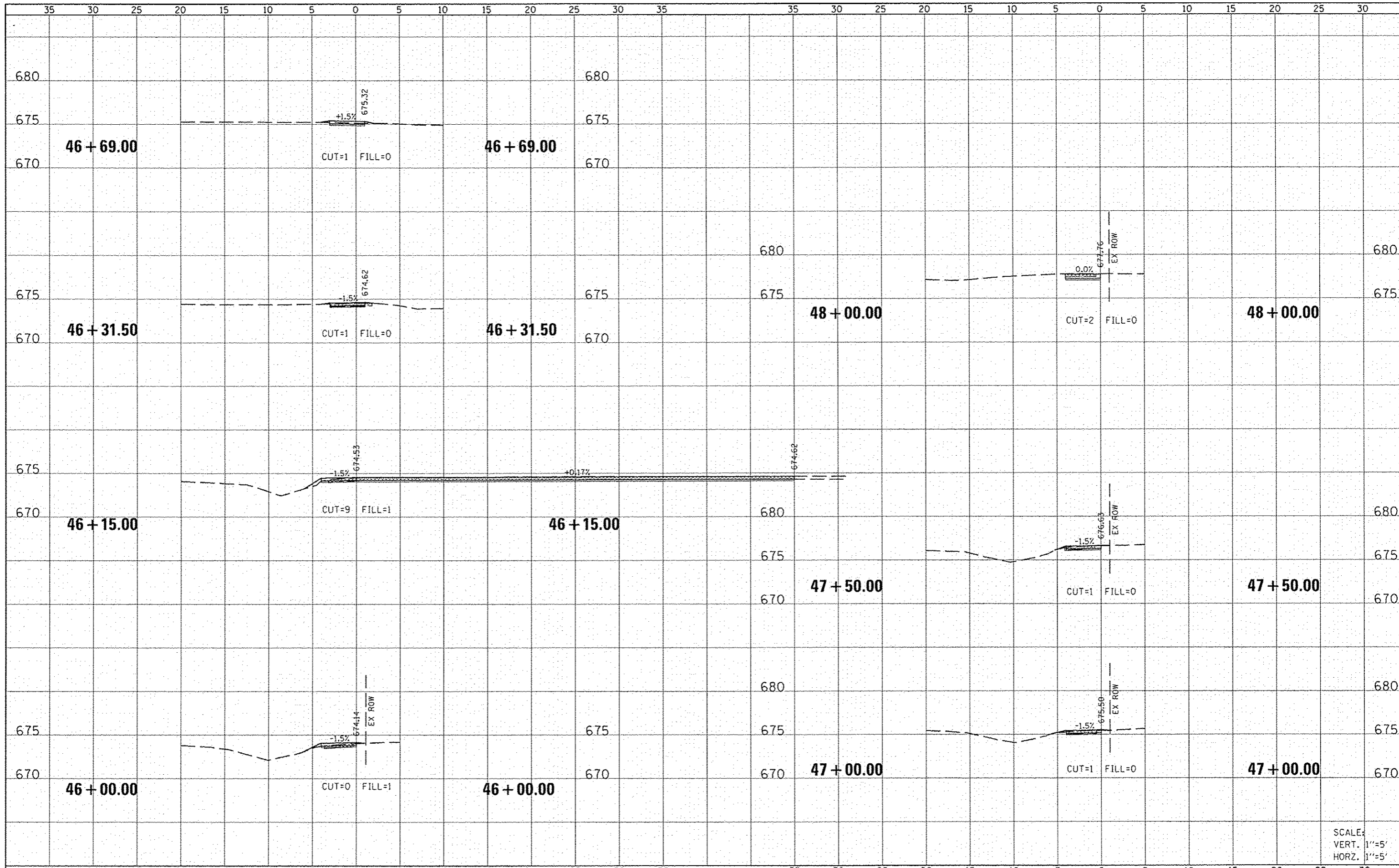
DATE	
BY	
DESIGNED	
DRAWN	
CHECKED	
DATE	
PROJECT	
NO.	

DATE	
BY	
DESIGNED	
DRAWN	
CHECKED	
DATE	
PROJECT	
NO.	



SCALE:
VERT. 1"=5'
HORZ. 1"=5'

FILE NAME	USER NAME	DESIGNED	REVISED	CITY OF WAVERLY SAFE ROUTES TO SCHOOLS PROGRAM	MILLER STREET CROSS SECTIONS		F.A. RTE.	SECTION	COUNTY	TOTAL SHEETS	SHEET NO.
P:\142595\Design\Design\CADD Sheets\062595-02-025-shr-ssht-miller.dgn	M. MCEVERS	M. MCEVERS			15-0000-00-SW	MORGAN	25	23			
PLOT SCALE = 10.0000 1/4" = 1'		W. SLEEMAN			CONTRACT NO. 93653						
PLOT DATE = 4/14/2015					ILLINOIS FED. AID PROJECT						
Default		DATE = 02/18/2015		SCALE:		SHEET 2 OF 4 SHEETS	STA. 43+00.00 TO STA. 45+50.00				

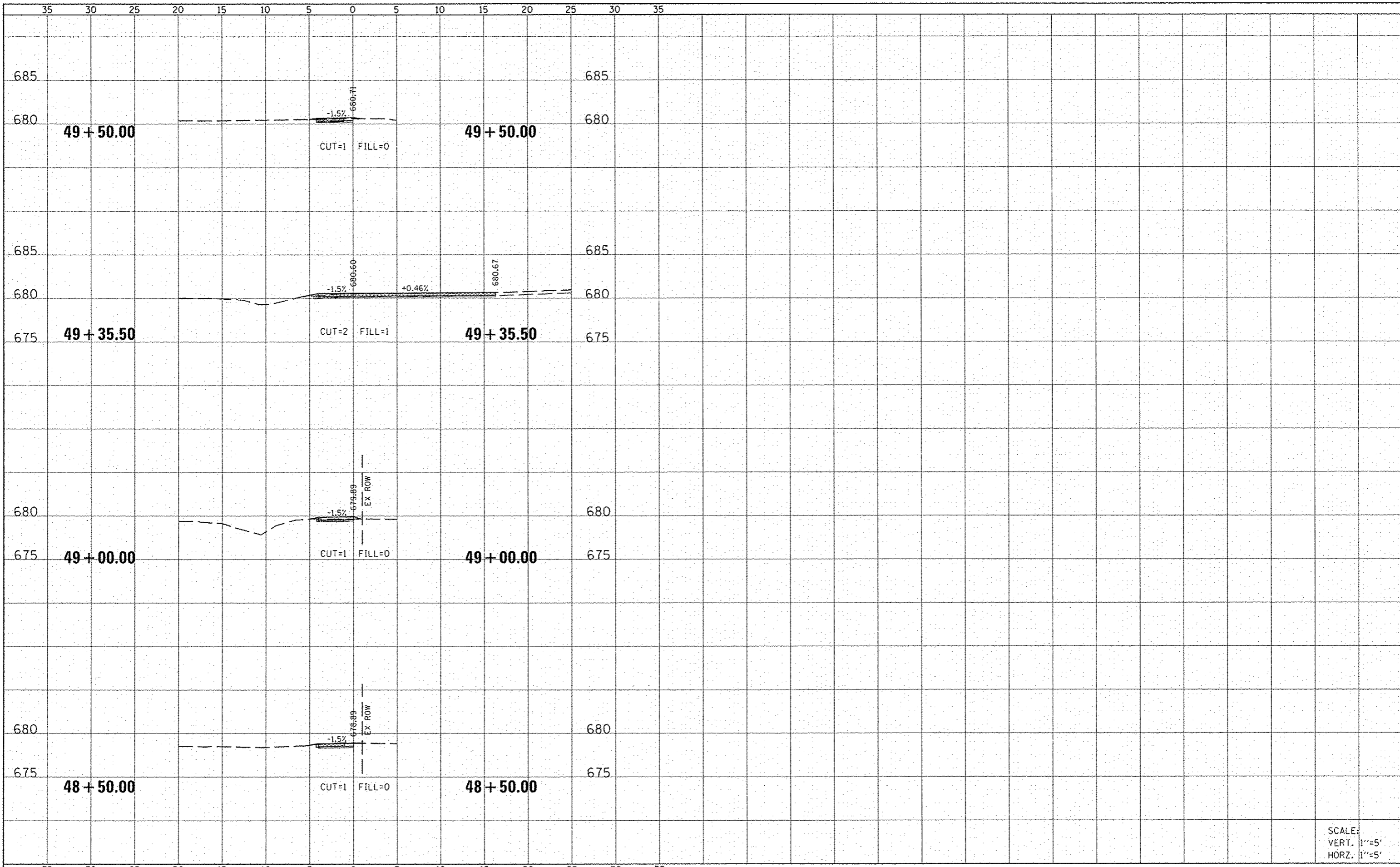


DATE	
BY	
REVISIONS	
NO.	
DATE	
BY	
REVISIONS	
NO.	
DATE	
BY	
REVISIONS	
NO.	

DATE	
BY	
REVISIONS	
NO.	
DATE	
BY	
REVISIONS	
NO.	
DATE	
BY	
REVISIONS	
NO.	

DATE	
BY	
REVISIONS	
DATE	
BY	
DESCRIPTION	
NO.	

DATE	
BY	
REVISIONS	
DATE	
BY	
DESCRIPTION	
NO.	



SCALE:
VERT. 1"=5'
HORZ. 1"=5'

FILE NAME	USER NAME	DESIGNED	REVISIONS	<p align="center">CITY OF WAVERLY SAFE ROUTES TO SCHOOLS PROGRAM</p>	<p align="center">MILLER STREET CROSS SECTIONS</p>	F.A. RATE	SECTION	COUNTY	TOTAL SHEETS	SHEET NO.
P:\14e2598\Design\Design\C600_Shoots\062595-02-025-shr-xssht-miller.dgn	M. MCEVERS	M. MCEVERS				15-00007-00-SW	MORGAN	25	25	
PLLOT SCALE = 10.0000' / 1"	W. SLEEMAN					CONTRACT NO. 93653		ILLINOIS FED. AID PROJECT		
PLLOT DATE = 4/9/2015	DATE = 02/18/2015					SCALE:	SHEET 4 OF 4 SHEETS	STA. 48+50.00 TO STA. 49+50.00		