

|                     |         |                    |           |
|---------------------|---------|--------------------|-----------|
| SECTION             | COUNTY  | TOTAL SHEETS       | SHEET NO. |
| 12-00031-01-RS      | MADISON | 14                 | 1         |
| FEDERAL AID PROJECT |         | CONTRACT NO. 97596 |           |

STATE OF ILLINOIS  
DEPARTMENT OF TRANSPORTATION  
DIVISION OF HIGHWAYS  
FEDERAL AID HIGHWAY  
**PIASA LANE RESURFACING  
F.A.U. 9005 (PIASA LANE)**  
SECTION 12-00031-01-RS  
FEDERAL PROJECT NO. M-5011 (381)  
VILLAGE OF HARTFORD  
MADISON COUNTY  
JOB C-98-352-12

FOR UTILITY LOCATION PURPOSES, THIS PROJECT IS LOCATED IN SOUTHEAST QUARTER OF SECTION 9, TOWNSHIP 4 NORTH, RANGE 9 WEST OF THE 3RD PRINCIPAL MERIDIAN.

ILLINOIS STATE LAW REQUIRES A 48-HOUR NOTICE BE GIVEN TO UTILITIES BEFORE DIGGING. FIELD MARKING OF FACILITIES MAY BE OBTAINED BY CONTACTING J.U.L.I.E. (800) 892-0123 OR FOR NON-MEMBERS, UTILITY COMPANY DIRECTLY. AGENCIES KNOWN TO HAVE FACILITIES WITHIN THE PROJECT AREA ARE AS FOLLOWS:

WATER AND SANITARY SEWER:  
HARTFORD PUBLIC WORKS DEPT.  
140 WEST HAWTHORNE  
HARTFORD, IL 62048  
(618) 251-2680

ELECTRIC:  
AMEREN ILLINOIS  
700 OAKWOOD AVENUE  
ALTON, IL 62002  
(800) 325-7002

AT&T  
203 GOETHE  
COLLINSVILLE, IL 62234  
(618) 346-6400

CHARTER COMMUNICATIONS  
4767 SIGNATURE INDUSTRIAL DRIVE  
EDWARDSVILLE, IL 62025  
(618) 307-5730

PETROLEUM PIPELINE:  
PHILLIPS 66  
2300 S. DELMAR AVE.  
HARTFORD, IL 62048  
(618) 610-7431

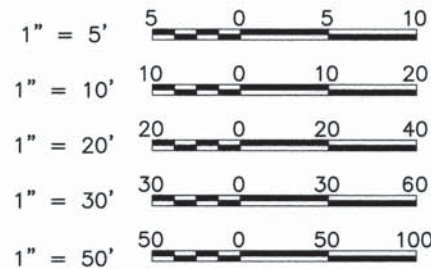
TRAFFIC SIGNALS:  
ILLINOIS DEPARTMENT OF TRANSPORTATION  
1102 EASTPORT PLAZA DRIVE  
COLLINSVILLE, IL 62234  
(618) 346-3110

PROPANE PIPELINE:  
LACLEDE PIPELINE CO.  
720 OLIVE ST.  
ST. LOUIS, MO 63101  
(314) 658-5552  
POST 552

**INDEX TO SHEETS**

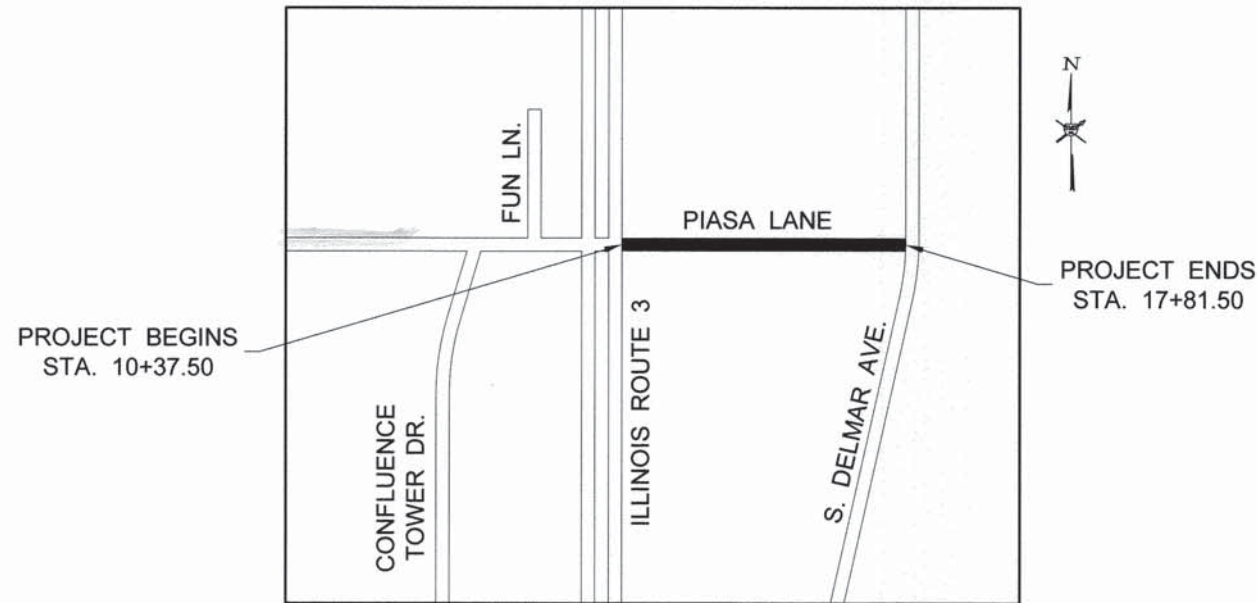
1. COVER SHEET, INDEX TO SHEETS
2. SUMMARY OF QUANTITIES
3. GENERAL NOTES, LEGEND & CONTROL POINTS, HIGHWAY STANDARDS
4. EXISTING TYPICAL SECTIONS/PROPOSED TYPICAL SECTIONS
5. PLAN/PROFILE
6. REMOVAL PLAN
7. STORM SEWER PLAN
8. DETOUR PLAN
9. EROSION CONTROL PLAN
10. PIASA LANE/DELMAR AVENUE INTERSECTION DETAIL
11. PAVEMENT MARKING & SIGNAGE PLAN
- 12.-14. EXISTING TRAFFIC SIGNALS

**SCALES**



FULL SIZE PLANS HAVE BEEN PREPARED USING STANDARD ENGINEERING SCALES. REDUCED SIZED PLANS WILL NOT CONFORM TO STANDARD SCALES. IN MAKING MEASUREMENTS ON REDUCED PLANS THE ABOVE SCALES MAY BE USED.

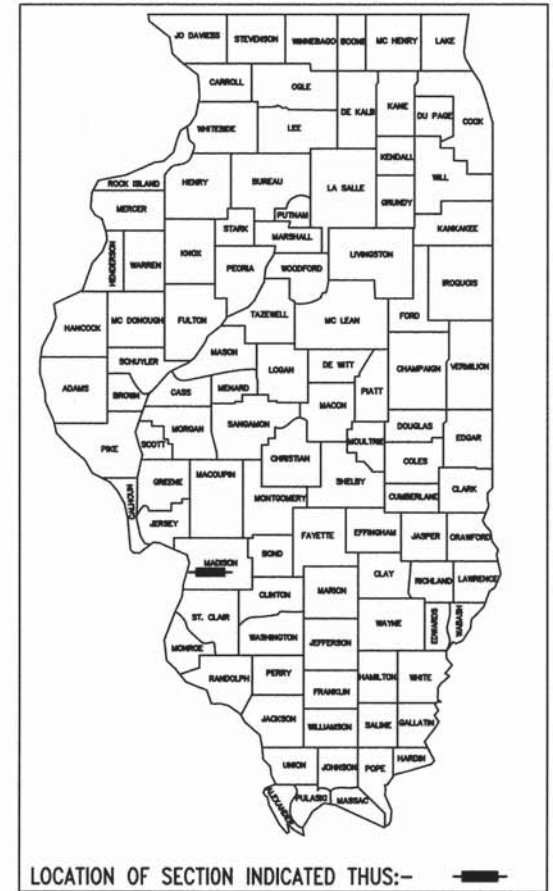
2015 ADT = 990  
% TRUCKS = 10  
FUNCTIONAL CLASSIFICATION: URBAN COLLECTOR  
DESIGN SPEED = 25 M.P.H.



**LOCATION MAP**

NOT TO SCALE

LENGTH OF PROJECT = 744.00 FEET = 0.141 MILES



LOCATION OF SECTION INDICATED THUS:-

|  |   |
|--|---|
| STATE OF ILLINOIS<br>DEPARTMENT OF TRANSPORTATION - DIVISION OF HIGHWAYS |   |
| APPROVED   | March 26, 2015<br><i>James W. Spann</i><br>VILLAGE OF HARTFORD, MAYOR   |
| PASSED   | April 8, 2015<br><i>[Signature]</i><br>DISTRICT 8 ENGINEER OF LOCAL ROADS & STREETS                                 |
| APPROVED   | April 8, 2015<br><i>[Signature]</i><br>JEFFREY W. KERN, P.E.<br>DEPUTY DIRECTOR OF HIGHWAYS<br>REGION FIVE ENGINEER |
| STATE OF ILLINOIS<br>DEPARTMENT OF TRANSPORTATION                        |   |

PRINTED BY THE AUTHORITY OF THE STATE OF ILLINOIS



*Larry D. Anderson*

DATE SIGNED 3/26/15  
EXPIRATION DATE 11/30/15

**SMS ENGINEERS** Sheppard, Morgan & Schwaab, Inc.  
CONSULTING ENGINEERS AND LAND SURVEYORS  
215 Market Street, P.O. Box E, Alton, IL 62002 618/462-9755 E-mail: mail@smsengineers.com  
10 Central Industrial Drive, Suite 3, Granite City, IL 62040 618/877-8700 E-mail: mail@smsengineers.com  
DESIGN FIRM # 184-000992

|                     |         |                    |           |
|---------------------|---------|--------------------|-----------|
| SECTION             | COUNTY  | TOTAL SHEETS       | SHEET NO. |
| 12-00031-01-RS      | MADISON | 14                 | 2         |
| FEDERAL AID PROJECT |         | CONTRACT NO. 97596 |           |

**SUMMARY OF QUANTITIES**

| CODE NO. | CONSTRUCTION TYPE CODE                               | ROADWAY           |       |
|----------|--|-------------------|-------|
|          |  | 75% FED/25% LOCAL | 0005  |
| ITEM     | UNIT   | TOTAL QUANTITY    |       |
| 20201200 | REMOVAL AND DISPOSAL OF UNSUITABLE MATERIAL          | CU YD             | 131   |
| 20800150 | TRENCH BACKFILL                                      | CU YD             | 22    |
| 21001000 | GEOTECHNICAL FABRIC FOR GROUND STABILIZATION         | SQ YD             | 235   |
| 25000200 | SEEDING, CLASS 2                                     | ACRE              | 0.1   |
| 25000400 | NITROGEN FERTILIZER NUTRIENT                         | POUND             | 9     |
| 25000500 | PHOSPHORUS FERTILIZER NUTRIENT                       | POUND             | 9     |
| 25000600 | POTASSIUM FERTILIZER NUTRIENT                        | POUND             | 9     |
| 25000700 | AGRICULTURAL GROUND LIMESTONE                        | TON               | 0.2   |
| 25100115 | MULCH, METHOD 2                                      | ACRE              | 0.1   |
| 28000250 | TEMPORARY EROSION CONTROL SEEDING                    | POUND             | 10    |
| 28000305 | TEMPORARY DITCH CHECKS                               | FOOT              | 12    |
| 28000400 | PERIMETER EROSION BARRIER                            | FOOT              | 301   |
| 35800100 | PREPARATION OF BASE                                  | SQ YD             | 2,598 |
| 35800200 | AGGREGATE BASE REPAIR                                | TON               | 106   |
| 40201000 | AGGREGATE FOR TEMPORARY ACCESS                       | TON               | 46    |
| 40600275 | BITUMINOUS MATERIALS (PRIME COAT)                    | POUND             | 5,845 |
| 40600990 | TEMPORARY RAMP                                       | SQ YD             | 203   |
| 40603090 | HOT-MIX ASPHALT BINDER COURSE, IL-19.0, N90          | TON               | 394   |
| 40603320 | HOT-MIX ASPHALT SURFACE COURSE, MIX "C", N90         | TON               | 224   |
| 42101300 | PROTECTIVE COAT                                      | SQ YD             | 163   |
| 44000165 | HOT-MIX ASPHALT SURFACE REMOVAL, 4"                  | SQ YD             | 2,598 |
| 44000400 | GUTTER REMOVAL                                       | FOOT              | 532   |
| 44201341 | CLASS C PATCHES, TYPE II, 9 INCH                     | SQ YD             | 14    |
| 54213657 | PRECAST REINFORCED CONCRETE FLARED END SECTION 12"   | EACH              | 1     |
| 550A0050 | STORM SEWERS, CLASS A, TYPE 1 12"                    | FOOT              | 224   |
| 60235300 | INLETS, TYPE A, TYPE 1 FRAME CLOSED LID              | EACH              | 2     |
| 60236700 | INLETS, TYPE A, TYPE 10 FRAME AND GRATE              | EACH              | 3     |
| 60600095 | CLASS SI CONCRETE (OUTLET)                           | CU YD             | 18.5  |
| 60602800 | CONCRETE GUTTER TYPE B                               | FOOT              | 280   |
| 67100100 | MOBILIZATION   | L SUM             | 1     |
| 70300100 | SHORT-TERM PAVEMENT MARKING                          | FOOT              | 74    |
| 70300210 | TEMPORARY PAVEMENT MARKING LETTERS AND SYMBOLS       | SQ FT             | 47    |
| 70300220 | TEMPORARY PAVEMENT MARKING - LINE 4"                 | FOOT              | 2,181 |
| 70300280 | TEMPORARY PAVEMENT MARKING - LINE 24"                | FOOT              | 49    |
| 70301000 | WORK ZONE PAVEMENT MARKING REMOVAL                   | SQ FT             | 25    |
| 72000100 | SIGN PANEL-TYPE 1                                    | SQ FT             | 16    |
| 72400710 | RELOCATE SIGN PANEL - TYPE 1                         | SQ FT             | 6     |
| 72900200 | METAL POST - TYPE B                                  | FOOT              | 57    |
| 78000100 | THERMOPLASTIC PAVEMENT MARKING - LETTERS AND SYMBOLS | SQ FT             | 47    |
| 78000200 | THERMOPLASTIC PAVEMENT MARKING - LINE 4"             | FOOT              | 2,068 |
| 78000650 | THERMOPLASTIC PAVEMENT MARKING - LINE 24"            | FOOT              | 49    |
| 78001110 | PAINT PAVEMENT MARKING-LINE 4"                       | FOOT              | 113   |
| 88600100 | DETECTOR LOOP, TYPE I                                | FOOT              | 345   |
| X4402720 | GUTTER REMOVAL SPECIAL                               | FOOT              | 52    |
| X7010216 | TRAFFIC CONTROL AND PROTECTION, (SPECIAL)            | L SUM             | 1     |
| Z0054530 | ROCK FILL-SUBGRADE                                   | TON               | 161   |
| Z0056648 | STORM SEWERS, TYPE 1, WATER MAIN QUALITY PIPE, 12"   | FOOT              | 310   |

\* SPECIALITY ITEM

REVISIONS

**SMS ENGINEERS**  
**Sheppard, Morgan & Schwaab, Inc.**  
CONSULTING ENGINEERS AND LAND SURVEYORS  
115 Market Street, P.O. Box E, Albany, IL 61803 618465-0735 E-mail: [msm@smsengineers.com](mailto:msm@smsengineers.com)  
10 Central Industrial Park, Suite 1, Grand City, IL 62040 618877-8700 E-mail: [mail@smsengineers.com](mailto:mail@smsengineers.com)  
DESIGN FIRM # 184-000992

PIASA LANE RESURFACING  
SECTION 12-00031-01-RS  
VILLAGE OF HARTFORD  
SUMMARY OF QUANTITIES

DWG. NO.  
P:\HARTFORD\448213\PIASA LANE\2 QUANTITIES.DWG  
2 QUANTITIES.DWG  
REF. BK. 10061 PG. 1  
JOB NO. 448213  
DSN. BY: LDA  
DWN. BY: CAD  
CHK. BY: LDA  
DATE: MARCH, 2015  
SCALE: NOT TO SCALE  
SHEET 2 OF 14

**GENERAL NOTES**

- THIS PROJECT SHALL BE CONSTRUCTED ACCORDING TO THE "STANDARD SPECIFICATIONS FOR ROAD AND BRIDGE CONSTRUCTION" ADOPTED JANUARY 1, 2012 AND THE SPECIAL PROVISIONS OF THE PROJECT CONTRACT.
- EXCEPT WHERE DESIGNATED OTHERWISE, THE LOCATIONS AND/OR DEPTHS OF UNDERGROUND UTILITIES SHOWN HAVE BEEN TAKEN FROM OFFICE RECORD INFORMATION FURNISHED BY THE UTILITY OWNERS AND MUST BE CONSIDERED APPROXIMATE.
- ALL ELEVATIONS REFER TO NATIONAL GEODETIC SURVEY (N.G.S.) DATUM.
- PROPOSED ELEVATIONS SHOWN ON THE PLANS AS ± ARE APPROXIMATE, EXACT ELEVATIONS SHALL BE DETERMINED BY THE ENGINEER IN THE FIELD, IF APPLICABLE, ELEVATIONS SHALL BE DETERMINED PRIOR TO FABRICATION OF THE DRAINAGE STRUCTURES.
- FOR SIMPLICITY, STORM SEWER LENGTHS SHOWN ON THE PLANS ARE FROM CENTER TO CENTER OF STRUCTURES. ACTUAL PIPE REQUIRED WILL BE LESS. MEASUREMENT FOR PAYMENT PURPOSES SHALL BE ACCORDING TO ARTICLE 550.09 OF THE STANDARD SPECIFICATIONS.
- PLAN QUANTITIES FOR HOT-MIX ASPHALT ITEMS WERE CALCULATED BASED ON USING 112 LBS. / SQ. YD. / IN.
- PLAN QUANTITIES FOR BITUMINOUS MATERIALS (PRIME COAT) WERE BASED ON USING 0.05 LBS./SQ. FT. FOR CONCRETE, H.M.A. AND OIL & CHIP SURFACES. AGGREGATE BASES SHALL BE PRIMED USING 0.25 LBS./SQ. FT.
- PLAN QUANTITIES FOR AGGREGATE BASE REPAIR, AGGREGATE FOR TEMPORARY ACCESS, AND ROCK FILL-SUBGRADE WERE CALCULATED BASED ON USING 2.05 TONS/CU. YD.
- ALL PROPOSED STORM SEWERS SHALL BE REINFORCED CONCRETE CULVERT, STORM DRAIN AND SEWER PIPE.
- THE QUANTITY SHOWN FOR REMOVAL AND DISPOSAL OF UNSUITABLE MATERIAL, ROCK FILL-SUBGRADE, AND AGGREGATE BASE REPAIR ARE ESTIMATES. THE ENGINEER SHALL DETERMINE ANY AREAS REQUIRING THESE MATERIALS ONCE THE HMA SURF. REM., 4" IS COMPLETED IN AN AREA.

**GENERAL LEGEND**

|  |                                    |  |                                    |
|--|------------------------------------|--|------------------------------------|
|  | CENTERLINE OF PROPOSED IMPROVEMENT |  | EXISTING INLET                     |
|  | EXISTING RIGHT-OF-WAY LINE         |  | EXISTING PIPE CULVERT              |
|  | PROPOSED RIGHT-OF-WAY LINE         |  | EXISTING SANITARY SEWER            |
|  | TEMPORARY CONSTRUCTION EASEMENT    |  | EXISTING STORM SEWER               |
|  | PROPERTY LINE                      |  | EXISTING WATER LINE                |
|  | SECTION LINE                       |  | EXISTING GAS LINE                  |
|  | 1/2 SECTION LINE                   |  | EXISTING TELEPHONE LINE            |
|  | IRON PIPE FOUND                    |  | EXISTING FIBER OPTIC CABLE         |
|  | IRON PIPE SET                      |  | EXISTING ELECTRIC CABLE            |
|  | MONUMENT FOUND                     |  | EXISTING PIPE LINE                 |
|  | PROPOSED R.O.W. MONUMENT           |  | SIDEWALK TO BE REMOVED             |
|  | FENCE                              |  | 18" TREE                           |
|  | EDGE OF EXISTING FEATURES          |  | SOIL BORING LOCATION               |
|  | CONSTRUCTION LIMITS                |  | PROPOSED DITCH                     |
|  | EXISTING DITCH                     |  | PROPOSED MANHOLE                   |
|  | UTILITY POLE                       |  | PROPOSED INLET                     |
|  | UTILITY POLE W/ DOWN GUY           |  | PROPOSED STORM SEWER               |
|  | LIGHT POLE                         |  | PROPOSED INLET / PIPE PROTECTION   |
|  | GAS METER                          |  | PROPOSED PERIMETER EROSION BARRIER |
|  | WATER METER                        |  | EXISTING SPOT ELEVATION            |
|  | FIRE HYDRANT                       |  | PROPOSED SPOT ELEVATION            |
|  | WATER OR GAS VALVE                 |  | PROPOSED DEPRESSED CURB            |
|  | TELEPHONE PEDESTAL                 |  | PROPOSED HOT-MIX-ASPHALT SURFACING |
|  | EXISTING SIGN                      |  | PROPOSED DETECTABLE WARNING        |
|  | PROPOSED SIGN                      |  |                                    |
|  | MAIL BOX                           |  |                                    |
|  | EXISTING MANHOLE                   |  |                                    |
|  | CONTROL POINT                      |  |                                    |

**COMMITMENTS**

NONE

**HIGHWAY STANDARDS**

|           |           |
|-----------|-----------|
| 280001-07 | 701422-07 |
| 420111-03 | 701501-06 |
| 442201-03 | 701701-09 |
| 542301-03 | 701901-04 |
| 602301-04 | 720001-01 |
| 602701-02 | 720006-04 |
| 604001-04 | 720011-01 |
| 604046-03 | 729001-01 |
| 606201-02 | 780001-05 |
| 701301-04 | 886001-01 |
|           | 886006-01 |

**MIX DESIGNS**

|                  |                |
|------------------|----------------|
| MIXTURE USE      | SURFACE        |
| AC/PG            | PG 64-22       |
| RAP% (MAX.)      | 10%            |
| DESIGN AIR VOIDS | 4.0% @ NDES=90 |
| MIX COMPOSITION  | --             |
| FRICTION AGG.    | MIX C          |

|                  |                |
|------------------|----------------|
| MIXTURE USE      | BINDER         |
| AC/PG            | PG 64-22       |
| RAP% (MAX.)      | 15%            |
| DESIGN AIR VOIDS | 4.0% @ NDES=90 |
| MIX COMPOSITION  | IL-19.0        |
| FRICTION AGG.    | --             |

**ABBREVIATIONS**

|         |   |
|---------|---|
| T.C.    | - TOP OF CURB                                       |
| E.P.    | - EDGE OF PAVEMENT                                  |
| F.L.    | - FLOW LINE   |
| F. & G. | - FRAME AND GRATE                                   |
| O.L.    | - OPEN LID  |
| C.L.    | - CLOSED LID  |
| SS1     | - STORM SEWER TYPE 1                                |
| T.B.    | - TRENCH BACKFILL                                   |
| C       | - EARTH EXCAVATION QUANTITY SHOWN ON CROSS SECTIONS |
| F       | - EMBANKMENT QUANTITY SHOWN ON CROSS SECTIONS       |

**BENCHMARKS**

| CONTROL POINT | NORTHING    | EASTING       | ELEVATION | DESCRIPTION             |
|---------------|-------------|---------------|-----------|-------------------------|
| CP #1583      | 781,749.032 | 2,316,243.064 | 431.66    | R/R SPIKE IN POWER POLE |

**SURVEY CONTROL POINTS**

| CONTROL POINT | NORTHING    | EASTING       | ELEVATION | DESCRIPTION      |
|---------------|-------------|---------------|-----------|------------------|
| CP #1000      | 781,759.089 | 2,316,590.521 | 430.84    | REBAR w/ SMS CAP |
| CP #1001      | 781,808.703 | 2,316,067.955 | 430.18    | REBAR w/ SMS CAP |
| CP #75020     | 781,802.665 | 2,316,786.421 | 430.27    | REBAR w/ SMS CAP |

| SECTION             | COUNTY  | TOTAL SHEETS       | SHEET NO. |
|---------------------|---------|--------------------|-----------|
| 12-00031-01-RS      | MADISON | 14                 | 3         |
| FEDERAL AID PROJECT |         | CONTRACT NO. 97596 |           |

REVISIONS

**SMS ENGINEERS**  
 Sheppard, Morgan & Schwaab, Inc.  
 CONSULTING ENGINEERS AND LAND SURVEYORS  
 215 Market Street, P.O. Box E, Alton, IL 62002 6184826755 E-mail: mail@smsengineers.com  
 10 Central Industrial Drive, Suite 3, Granite City, IL 62040 6189774700 E-mail: mail@smsengineers.com  
 DESIGN FIRM # 184-000992

PIASA LANE RESURFACING  
 SECTION 12-00031-01-RS  
 VILLAGE OF HARTFORD  
 GENERAL NOTES, HIGHWAY STANDARDS,  
 MIX DESIGNS, LEGEND & CONTROL POINTS

|                      |                               |
|----------------------|-------------------------------|
| DWG. NO.             | EP/HARTFORD 448213 PIASA LANE |
| 3 GENERAL NOTES.DWG  |                               |
| REF. BK. 10061 PG. 1 |                               |
| JOB NO. 448213       |                               |
| DSN. BY: LDA         |                               |
| DWN. BY: CAD         |                               |
| CHK. BY: LDA         |                               |
| DATE: MARCH, 2015    |                               |
| SCALE: NOT TO SCALE  |                               |
| SHEET 3 OF 14        |                               |

|                     |         |                    |           |
|---------------------|---------|--------------------|-----------|
| SECTION             | COUNTY  | TOTAL SHEETS       | SHEET NO. |
| 12-00031-01-RS      | MADISON | 14                 | 4         |
| FEDERAL AID PROJECT |         | CONTRACT NO. 97596 |           |

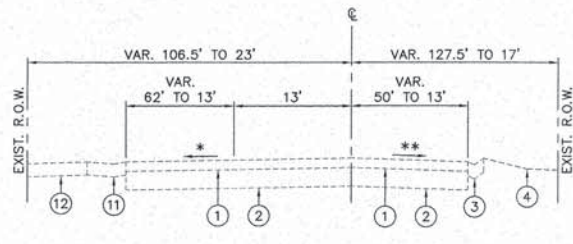
REVISIONS

**SMS** Sheppard, Morgan & Schwaab, Inc.  
 CONSULTING ENGINEERS AND LAND SURVEYORS  
 215 Walnut Street, P.O. Box E, Alton, IL 62002 618/462-9755 E-mail: mail@smseng.com  
 10 Central Industrial Drive, Suite 1, Granite City, IL 62040 618/877-8700 E-mail: mail@mseng.com  
 DESIGN FIRM # 184-000992

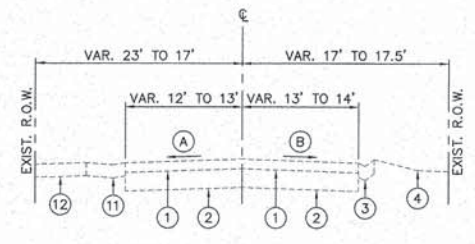
PIASA LANE RESURFACING  
 SECTION 12-00031-01-RS  
 VILLAGE OF HARTFORD  
 TYPICAL SECTIONS

|                        |                             |
|------------------------|-----------------------------|
| DWG. NO.               | FWHARTF00 448213 PIASA LANE |
| 4 TYPICAL SECTIONS.DWG |                             |
| REF. BY: 10081 PG. 1   |                             |
| IOR NO. 448213         |                             |
| DSN. BY: LDA           |                             |
| DWN. BY: CAD           |                             |
| CHK. BY: LDA           |                             |
| DATE: MARCH, 2015      |                             |

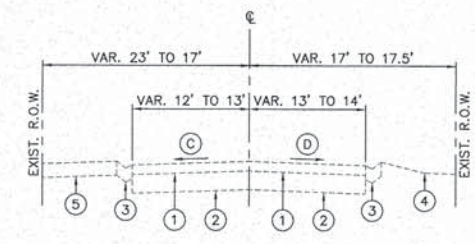
SCALE: NOT TO SCALE  
 SHEET 4 OF 14



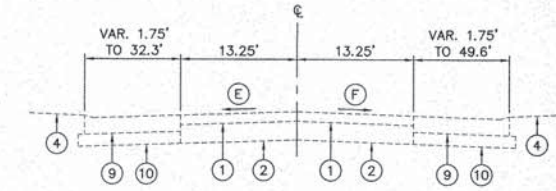
EXISTING TYPICAL SECTION  
 PIASA LANE  
 STA. 10+37.50 TO STA. 12+73  
 \* VARIES 1.23% TO 1.76%  
 \*\* VARIES 1.07% TO 1.54%



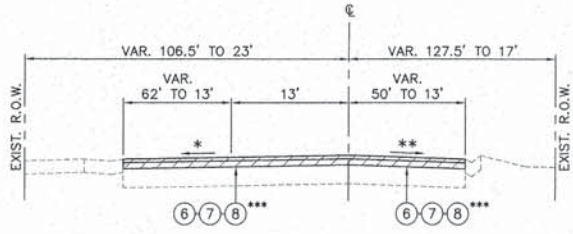
EXISTING TYPICAL SECTION  
 PIASA LANE  
 STA. 12+73 TO STA. 15+65  
 A VARIES 0.21% TO 1.46%  
 B VARIES 1.04% TO 2.31%



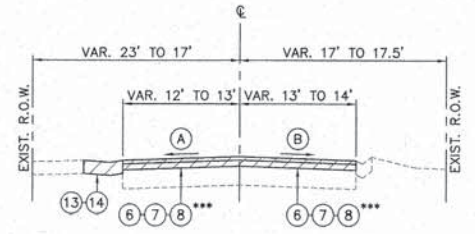
EXISTING TYPICAL SECTION  
 PIASA LANE  
 STA. 15+65 TO STA. 17+33.40  
 C VARIES 0.07% TO 0.89%  
 D VARIES 0.16% TO 2.08%



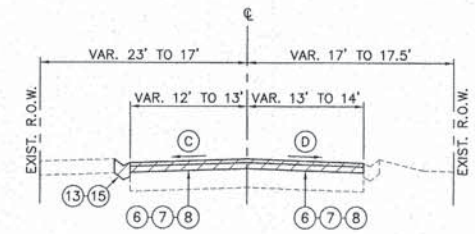
EXISTING TYPICAL SECTION  
 PIASA LANE  
 STA. 17+33.40 TO STA. 17+81.50  
 NOTE: EXIST. R.O.W. IS 17' LT. AND 18' RT. FROM STA. 17+33.40 TO STA. 17+69.75± THEN THE EXIST. R.O.W. LINE FOLLOWS DELMAR AVE. EXISTING R.O.W.  
 E VARIES FROM +0.80% TO -1.69%  
 F VARIES FROM +0.07% TO -2.62%



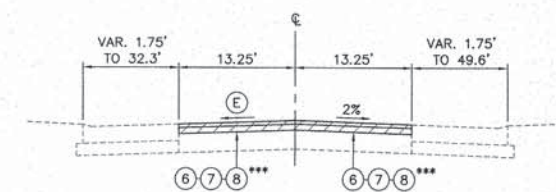
PROPOSED TYPICAL SECTION  
 PIASA LANE  
 STA. 10+37.50 TO STA. 12+73  
 \* VARIES 1.50% TO 2.00%  
 \*\* VARIES 1.50% TO 2.00%  
 \*\*\* VARIES FROM 2.5" TO 3.3"



PROPOSED TYPICAL SECTION  
 PIASA LANE  
 STA. 12+73 TO STA. 15+65  
 A VARIES 1.50% TO 2.00%  
 B VARIES 1.50% TO 2.00%  
 \*\*\* VARIES FROM 2.5" TO 3"



PROPOSED TYPICAL SECTION  
 PIASA LANE  
 STA. 15+65 TO STA. 17+33.40  
 C VARIES 1.50% TO 2.00%  
 D VARIES 1.50% TO 2.00%

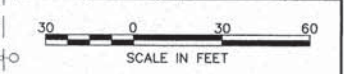


PROPOSED TYPICAL SECTION  
 PIASA LANE  
 STA. 17+33.40 TO STA. 17+81.50  
 NOTE: EXIST. R.O.W. IS 17' LT. AND 18' RT. FROM STA. 17+33.40 TO STA. 17+69.75± THEN THE EXIST. R.O.W. LINE FOLLOWS DELMAR AVE. EXISTING R.O.W.  
 E VARIES 1.50% TO 2.00%  
 \*\*\* VARIES FROM 2.5" TO 4"

LEGEND

- 1 EXISTING HMA RESURFACING, 4"
- 2 EXISTING AGGREGATE BASE COURSE, 8"
- 3 EXISTING CONCRETE GUTTER, TYPE B
- 4 EXISTING GROUNDLINE
- 5 EXISTING OIL AND CHIP OR AGGREGATE SURFACE
- 6 PROPOSED HMA SURFACE REMOVAL, 4"
- 7 PROPOSED HOT-MIX ASPHALT SURFACE COURSE, MIX "C", N90, 1.5"
- 8 PROPOSED HMA BINDER COURSE, IL-19.0, N90, 2.5" (TYP. UNLESS NOTED OTHERWISE)
- 9 EXISTING P.C.C. PAVEMENT, 8"
- 10 EXISTING AGGREGATE BASE, 6"
- 11 EXISTING TYPE B GUTTER, ENTRANCE
- 12 EXISTING HMA SURFACE
- 13 PROPOSED GUTTER REMOVAL
- 14 PROPOSED CLASS SI CONCRETE (OUTLET)
- 15 PROPOSED CONCRETE GUTTER TYPE B

| SECTION             | COUNTY  | TOTAL SHEETS       | SHEET NO. |
|---------------------|---------|--------------------|-----------|
| 12-00031-01-RS      | MADISON | 14                 | 5         |
| FEDERAL AID PROJECT |         | CONTRACT NO. 97596 |           |

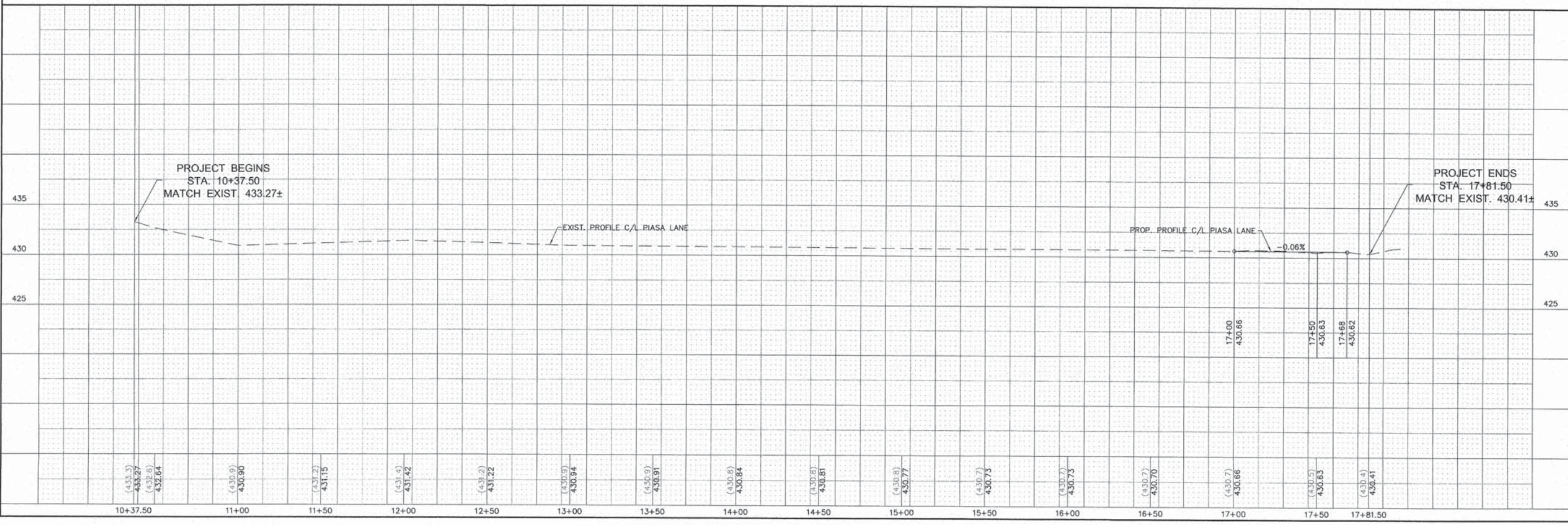
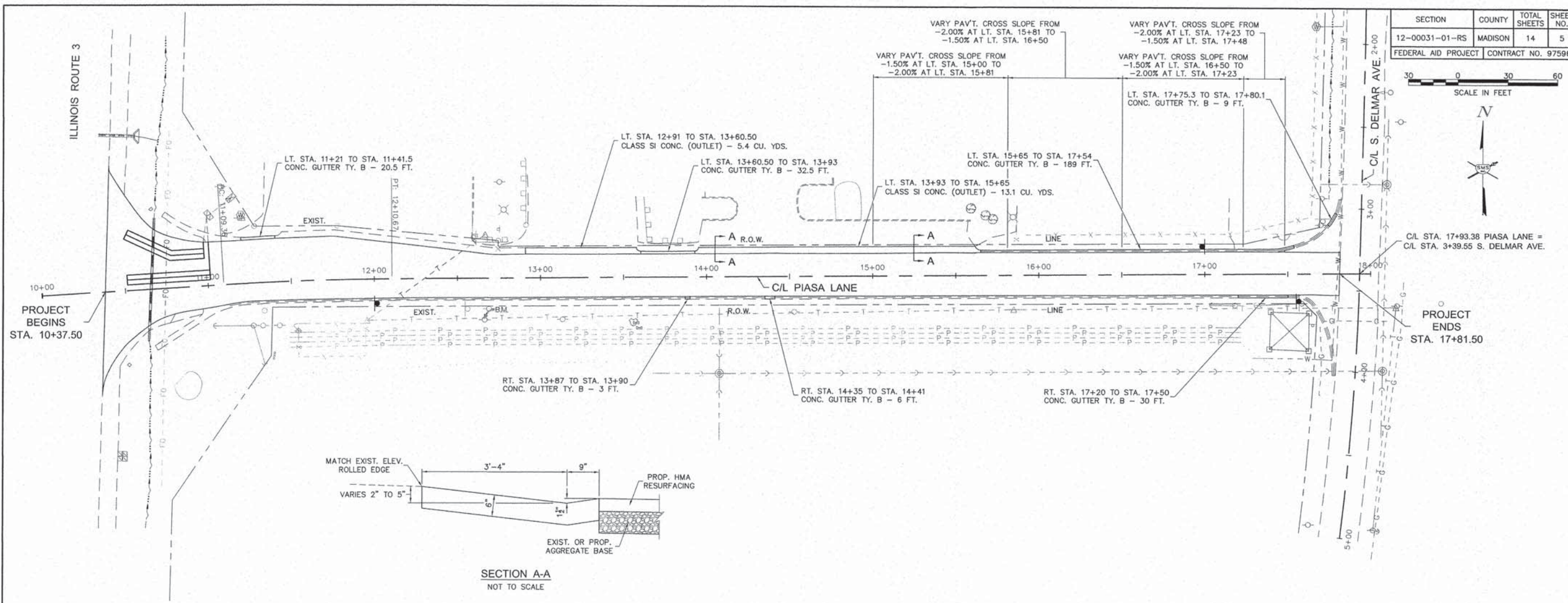


REVISIONS

**SMS** Sheppard, Morgan & Schwaab, Inc.  
 CONSULTING ENGINEERS AND LAND SURVEYORS  
 215 Market Street, P.O. Box E, Alton, IL 62002 618450-9155 E-mail: mail@smsengr.com  
 10 Central Industrial Drive, Suite 3, Granite City, IL 62040 618777-8700 E-mail: mail@smsengr.com  
 DESIGN FIRM # 184-000992

PIASA LANE RESURFACING  
 SECTION 12-00031-01-RS  
 VILLAGE OF HARTFORD  
 PLAN / PROFILE

DWG. NO. P:\HARTFORD\448213\PIASA LANE\5 ROADWAY P-P.DWG  
 REF. BY: 10061 PG. 1  
 JOB NO. 448213  
 DSN. BY: LDA  
 DWN. BY: CAD  
 CHK. BY: LDA  
 DATE: MARCH, 2015  
 SCALE: 1" = 30'  
 1" = 5'  
 SHEET 5 OF 14



|                     |         |                    |           |
|---------------------|---------|--------------------|-----------|
| SECTION             | COUNTY  | TOTAL SHEETS       | SHEET NO. |
| 12-00031-01-RS      | MADISON | 14                 | 6         |
| FEDERAL AID PROJECT |         | CONTRACT NO. 97596 |           |

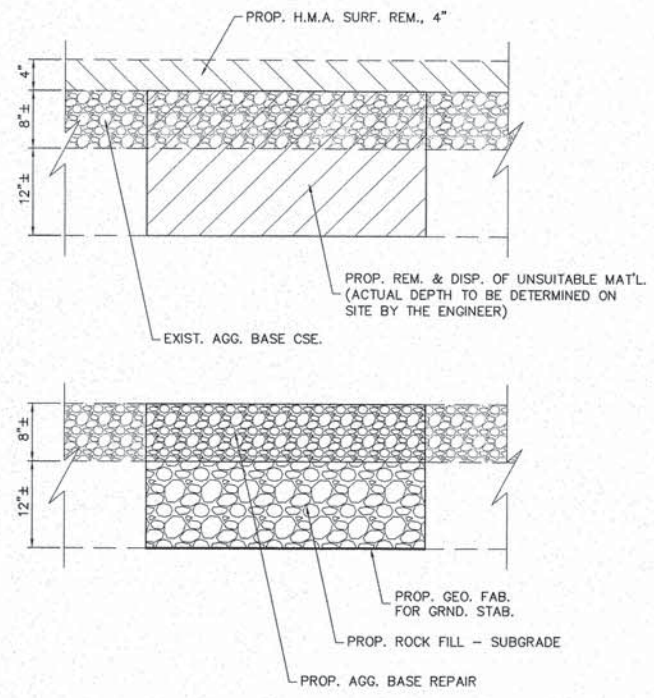


REVISIONS

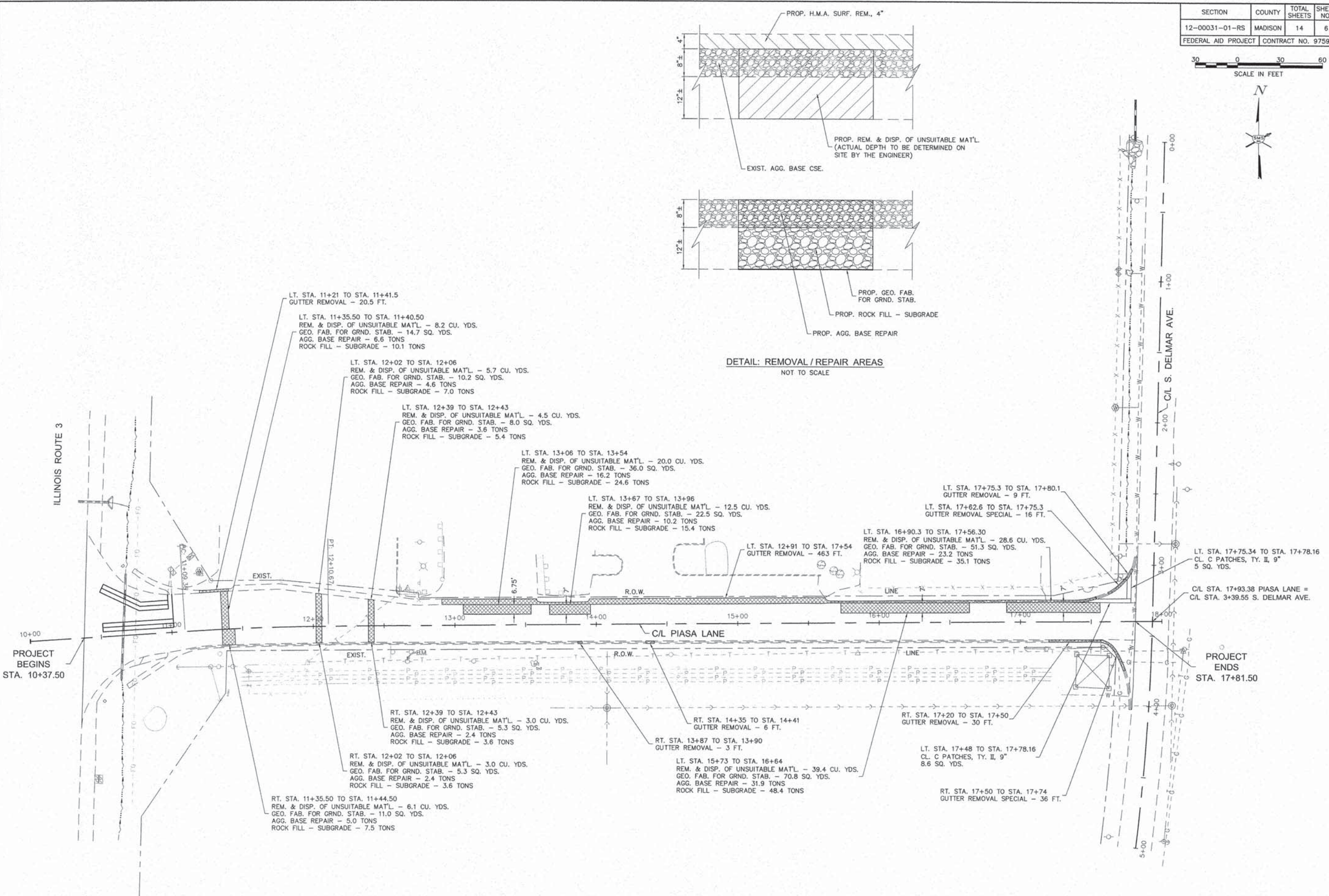
**SMS** Sheppard, Morgan & Schwaab, Inc.  
 CONSULTING ENGINEERS AND LAND SURVEYORS  
 215 North Street, P.O. Box E, Ste. 1, Elroy, WI 53528-9155 E-mail: [msm@smseng.com](mailto:msm@smseng.com)  
 11 Central Industrial Drive, Suite 3, Geneva, NY 14456-1209 Phone: 315-787-4700 Fax: 315-787-4700  
 DESIGN FIRM # 184-000992

PIASA LANE RESURFACING  
 SECTION 12-00031-01-RS  
 VILLAGE OF HARTFORD  
 REMOVAL PLAN

|          |                        |
|----------|------------------------|
| DWG. NO. | 12-00031-01-RS         |
| PROJECT  | PIASA LANE RESURFACING |
| DATE     | 12/15/14               |
| SCALE    | 1" = 30'               |
| DATE     | MARCH, 2015            |



DETAIL: REMOVAL / REPAIR AREAS  
 NOT TO SCALE



S:\Land Projects\HARTFORD, VILLAGE OF (448213.0) PIASA LANE\dwg\6 REMOVAL PLAN.dwg, 3/25/2015 12:07:51 PM, jiman, 1:30

|                     |         |                    |           |
|---------------------|---------|--------------------|-----------|
| SECTION             | COUNTY  | TOTAL SHEETS       | SHEET NO. |
| 12-00031-01-RS      | MADISON | 14                 | 7         |
| FEDERAL AID PROJECT |         | CONTRACT NO. 97596 |           |



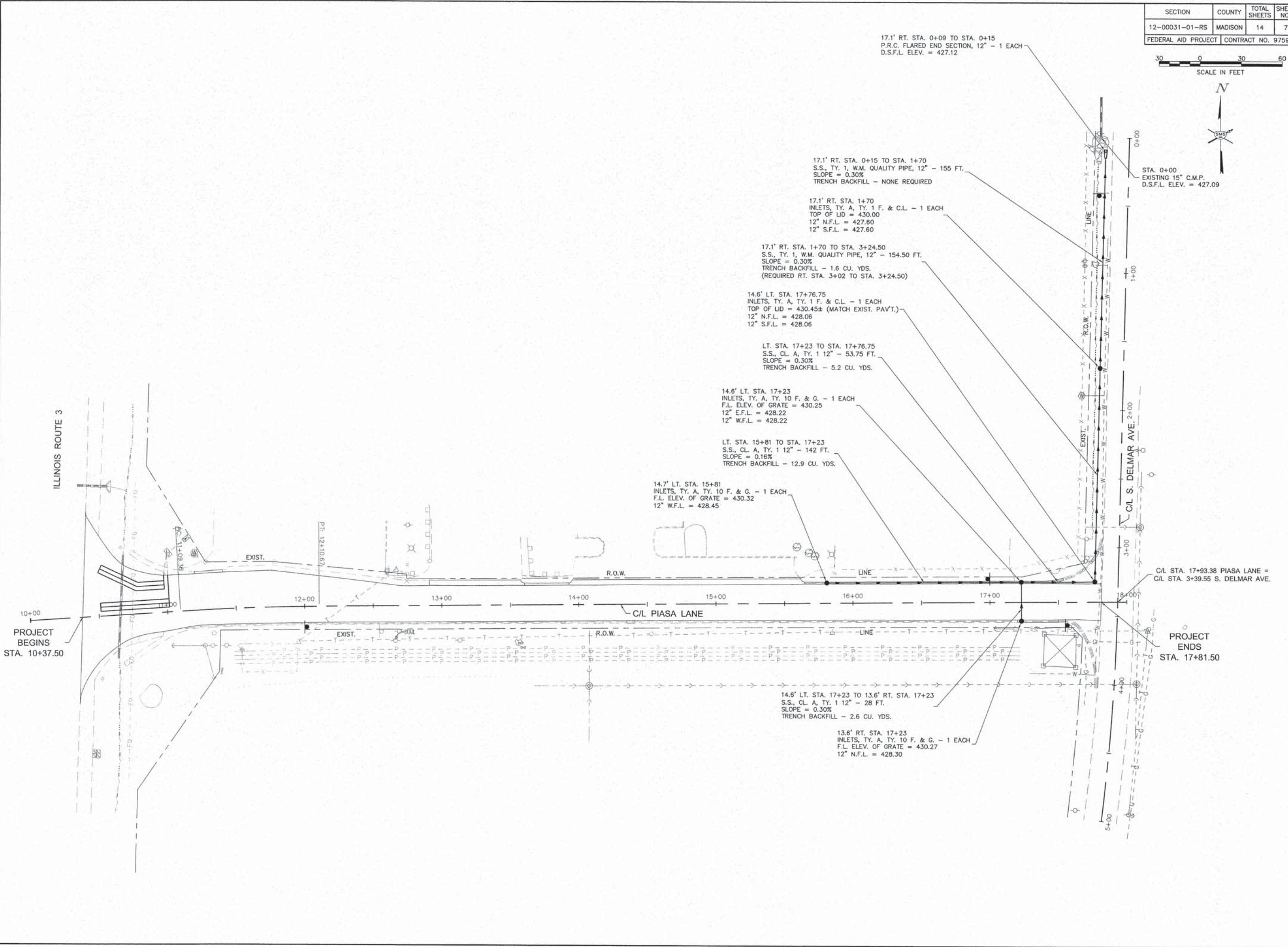
REVISIONS

**SMS** Sheppard, Morgan & Schwaab, Inc.  
 CONSULTING ENGINEERS AND LAND SURVEYORS  
 275 Meador Street P.O. Box E, Alton, IL 62002 618462-9755 E-mail: mail@smsengr.com  
 10 Central Industrial Drive, Suite 3, Centralia, IL 62801 618577-4700 E-mail: mail@smsengr.com  
 DESIGN FIRM # 184-000992

PIASA LANE RESURFACING  
 SECTION 12-00031-01-RS  
 VILLAGE OF HARTFORD  
 STORM SEWER PLAN

|          |  |
|----------|--|
| DWG. NO. | 448213                                     |
| PROJECT  | HARTFORD VILLAGE OF PIASA LANE STORM SEWER |
| REF. BK. | 10061                                      |
| JOB NO.  | 448213                                     |
| DSN. BY: | LDA  |
| DWN. BY: | CAD  |
| CHK. BY: | LDA  |
| DATE:    | MARCH, 2015                                |

SCALE: 1" = 30'  
 SHEET 7 OF 14

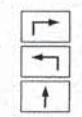


S:\Land Projects\HARTFORD, VILLAGE OF (448213) PIASA LANE.dwg 7 STORM SEWER.dwg 3/25/2015 12:10:52 PM, Jiman, L30

|                     |         |                    |           |
|---------------------|---------|--------------------|-----------|
| SECTION             | COUNTY  | TOTAL SHEETS       | SHEET NO. |
| 12-00031-01-RS      | MADISON | 14                 | 8         |
| FEDERAL AID PROJECT |         | CONTRACT NO. 97596 |           |

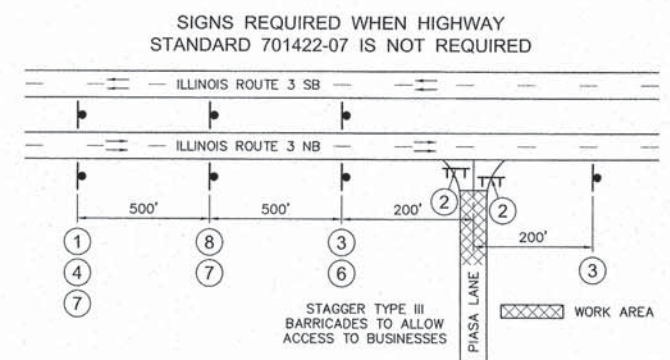
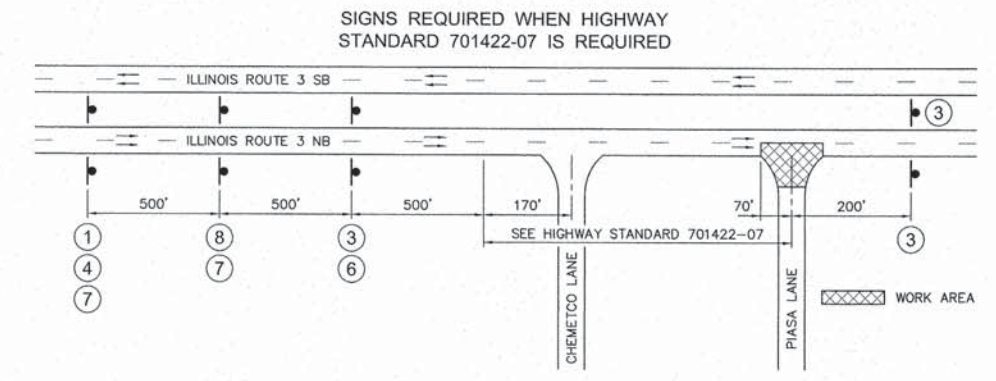
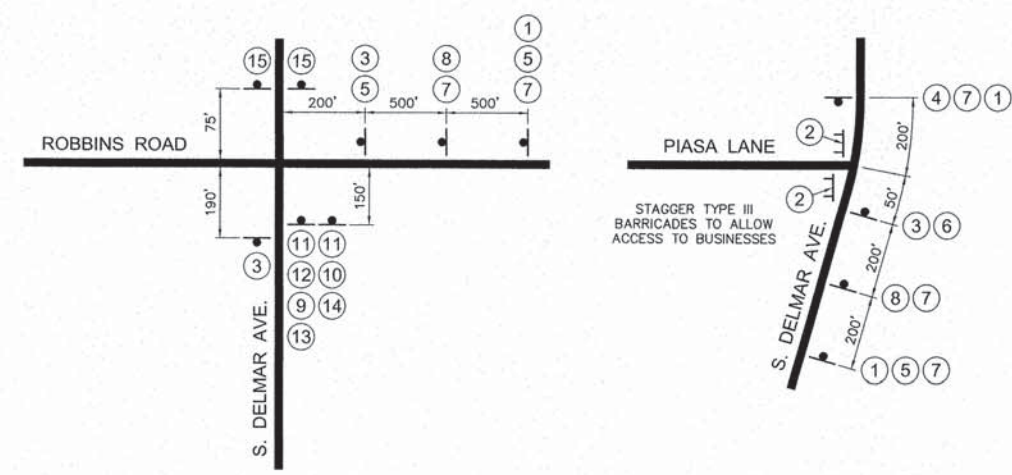
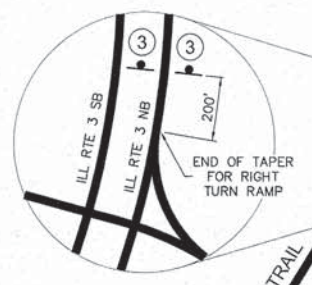
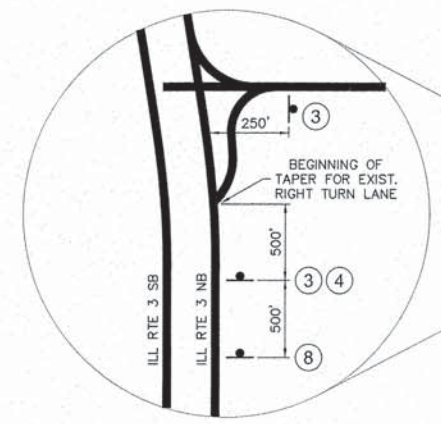
**LEGEND**

- ① SIGN, "ROAD CLOSED AHEAD", W20-3(0)48
- ② SIGN, "ROAD CLOSED TO THROUGH TRAFFIC", R11-4, ATTACHED TO TYPE III BARRICADES
- ③ SIGN, "DETOUR", M4-8, 24" x 12", BLACK ON ORANGE
- ④ SIGN, BLACK ARROW ON ORANGE BACKGROUND, M5-1, 21" x 15"
- ⑤ SIGN, BLACK ARROW ON ORANGE BACKGROUND, M5-1, 21" x 15"
- ⑥ SIGN, BLACK ARROW ON ORANGE BACKGROUND, M6-3, 21" x 15"
- ⑦ SIGN, "PIASA LANE", W17-I100, BLACK ON ORANGE
- ⑧ SIGN, "DETOUR AHEAD", W20-2
- ⑨ SIGN, "ILLINOIS 3", M1-I100, 24" x 24", BLACK ON WHITE BACKGROUND
- ⑩ SIGN, "ILLINOIS 111", M1-I100, 24" x 24", BLACK ON WHITE BACKGROUND
- ⑪ SIGN, "TO", M4-5, 24" x 12", BLACK ON WHITE BACKGROUND
- ⑫ SIGN, "NORTH", M3-1, 24" x 12", BLACK ON WHITE BACKGROUND
- ⑬ SIGN, BLACK ARROW ON WHITE BACKGROUND, M6-1, 21" x 15"
- ⑭ SIGN, BLACK ARROW ON WHITE BACKGROUND, M5-1, 21" x 15"
- ⑮ SIGN, NO TRUCK SYMBOL, BLACK TRUCK SYMBOL WITH RED CIRCLE AND RED SLASH ON WHITE BACKGROUND, R5-2, 24" x 24"



**GENERAL NOTES**

1. PROPOSED SIGNS LESS THAN 36" SHALL BE MOUNTED ON TYPE B METAL POSTS.
2. PROPOSED SIGNS 36" OR GREATER SHALL BE MOUNTED ON 2 TYPE B METAL POSTS OR 1 WOOD POST.
3. THE ENGINEER SHALL DETERMINE THE FINAL LOCATION OF ALL SIGNS AND BARRICADES. DISTANCES SHOWN MAY BE REVISED DUE TO EXISTING SITE CONDITIONS.
4. ALL SIGNS AND BARRICADES FOR THE PROPOSED DETOUR SHALL BE IN PLACE BEFORE PIASA LANE IS CLOSED.
5. ALL SIGNS SHALL MEET THE REQUIREMENTS OF THE LATEST EDITION OF THE "MANUAL ON UNIFORM TRAFFIC CONTROL DEVICES FOR STREETS AND HIGHWAYS".
6. INSTALLATION, MAINTENANCE AND REMOVAL OF ALL SIGNS, HARDWARE, BARRICADES AND POSTS SHALL BE INCLUDED IN THE CONTRACT UNIT PRICE FOR TRAFFIC CONTROL AND PROTECTION, (SPECIAL).



S:\Land Projects\HARTFORD, VILLAGE OF\PIASA LANE\dwg\8 DETOUR PLAN.dwg, 3/25/2015 12:11:11 PM, jman, 1:1

REVISIONS

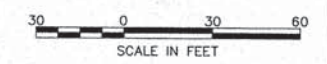
**SMS** Sheppard, Morgan & Schwaab, Inc.  
 CONSULTING ENGINEERS AND LAND SURVEYORS  
 215 Market Street, P.O. Box E, Alton, IL 62002, 618462-9795 E-mail: mail@smsengineers.com  
 10 Central Industrial Drive, Suite 3, Geneva, IL 60136, 61867-5100 E-mail: mail@smsengineers.com  
 DESIGN FIRM # 184-000992

PIASA LANE RESURFACING  
 SECTION 12-00031-01-RS  
 VILLAGE OF HARTFORD  
 DETOUR PLAN

DWG. NO. 448213  
 B DETOUR PLAN.DWG  
 REF. BK. 10061 PG. 1  
 JOB NO. 448213  
 DSN. BY: LDA  
 DWN. BY: CAD  
 CHK. BY: LDA  
 DATE: MARCH, 2015  
 SCALE: NOT TO SCALE  
 SHEET 8 OF 14



|                     |         |                    |           |
|---------------------|---------|--------------------|-----------|
| SECTION             | COUNTY  | TOTAL SHEETS       | SHEET NO. |
| 12-00031-01-RS      | MADISON | 14                 | 9         |
| FEDERAL AID PROJECT |         | CONTRACT NO. 97596 |           |

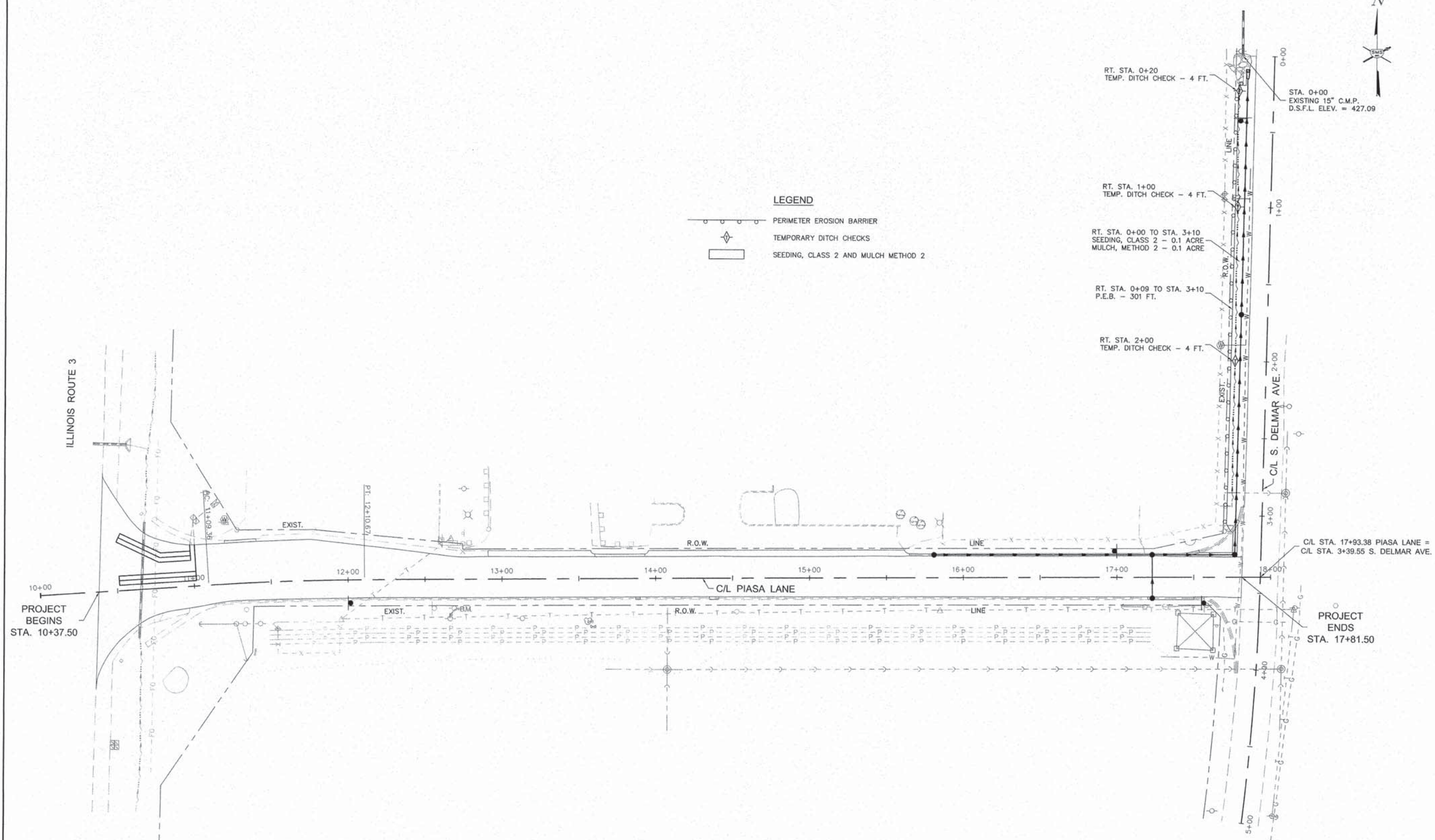


REVISIONS

**SMS ENGINEERS**  
**Sheppard, Morgan & Schwaab, Inc.**  
 CONSULTING ENGINEERS AND LAND SURVEYORS  
 215 Maple Street, P.O. Box E, Alton, IL 62002 618-662-3705 E-mail: mail@smsengineers.com  
 10 Central Industrial Drive, Suite 3, Granite City, IL 62040 618-717-3100 E-mail: mail@smsengineers.com  
 DESIGN FIRM # 184-000992

PIASA LANE RESURFACING  
 SECTION 12-00031-01-RS  
 VILLAGE OF HARTFORD  
 EROSION CONTROL

DWG. NO. 12-00031-01-RS  
 9 EROSION CONTROL DWG  
 REF. BK. 10061 PG. 1  
 JOB NO. 445213  
 DSN. BY: LDA  
 DWN. BY: CAD  
 CHK. BY: LDA  
 DATE: MARCH, 2015  
 SCALE: 1" = 30'  
 SHEET 9 OF 14



- LEGEND**
- PERIMETER EROSION BARRIER
  - TEMPORARY DITCH CHECKS
  - SEEDING, CLASS 2 AND MULCH METHOD 2

ILLINOIS ROUTE 3

PROJECT BEGINS  
 STA. 10+37.50

C/L STA. 17+93.38 PIASA LANE =  
 C/L STA. 3+39.55 S. DELMAR AVE.

PROJECT ENDS  
 STA. 17+81.50

S:\Land Projects\HARTFORD, VILLAGE OF (448213) PIASA LANE\dwg\9 EROSION CONTROL.dwg, 3/25/2015 12:11:28 PM, jmain, 130

|                     |         |                    |           |
|---------------------|---------|--------------------|-----------|
| SECTION             | COUNTY  | TOTAL SHEETS       | SHEET NO. |
| 12-00031-01-RS      | MADISON | 14                 | 10        |
| FEDERAL AID PROJECT |         | CONTRACT NO. 97596 |           |

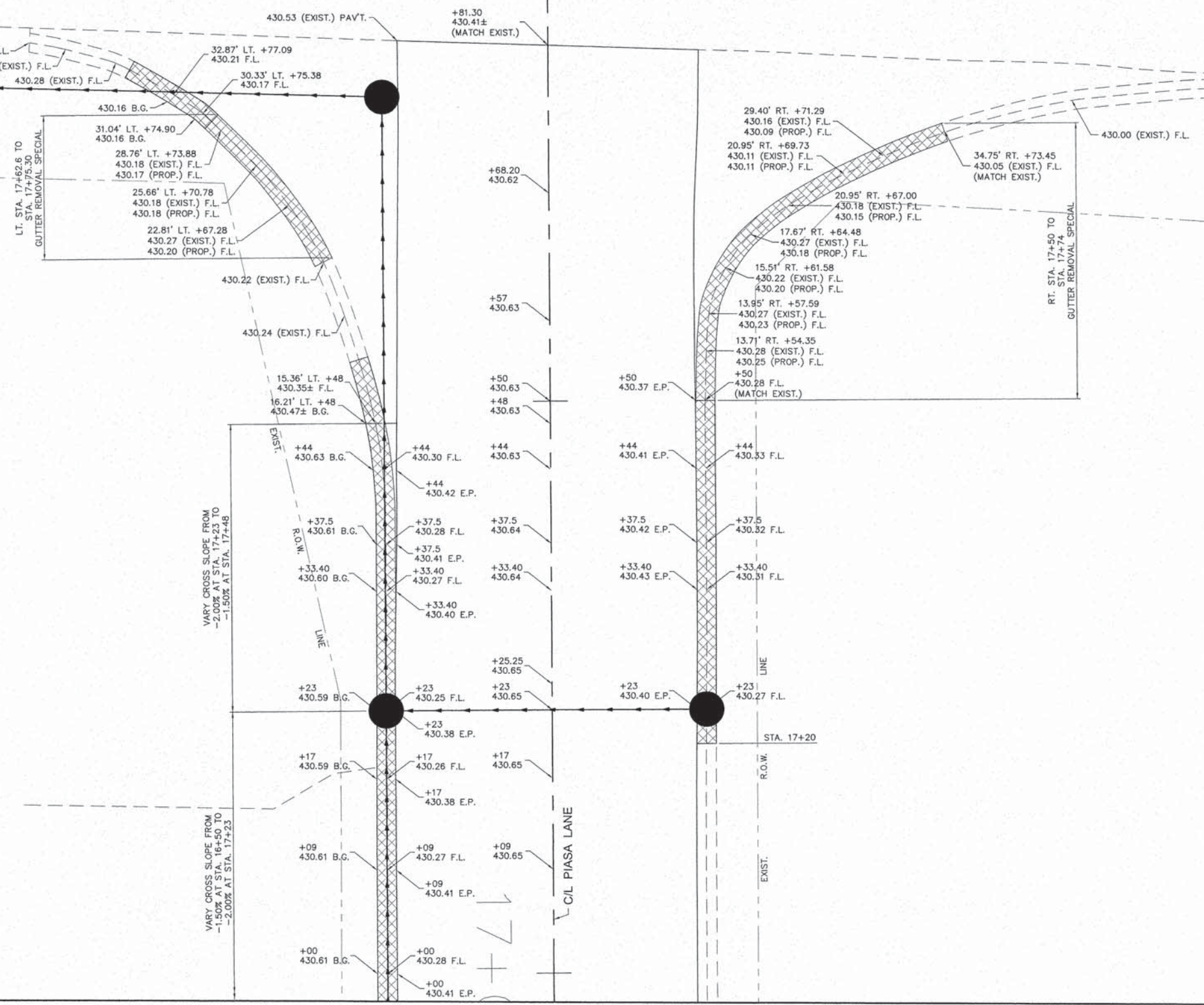


3+00

1  
00  
00

C/L STA. 17+93.38 PIASA LANE =  
C/L STA. 3+39.55 S. DELMAR AVE.

C/L S. DELMAR AVE.



REVISIONS

**SMS** Sheppard, Morgan & Schwaab, Inc.  
CONSULTING ENGINEERS AND LAND SURVEYORS  
215 Market Street, P.O. Box E, Alton, IL 62902, 618/493-2155, E-mail: mail@smssurvey.com  
10 Central Industrial Drive, Suite 3, Granite City, IL 62040, 618/977-8700, E-mail: mail@smssurvey.com  
DESIGN FIRM # 184-000992

PIASA LANE RESURFACING  
SECTION 12-00031-01-RS  
VILLAGE OF HARTFORD  
PIASA LANE / DELMAR AVENUE INTERSECTION DETAIL

|          |  |
|----------|--|
| DWG. NO. | P:\HARTFORD\448213\PIASA LANE\10 DELMAR INTERSECTION.DWG |
| REF. BK. | 10061 PG. 1  |
| JOB NO.  | 448213   |
| DSN. BY: | LDA  |
| DWN. BY: | CAD  |
| CHK. BY: | LDA  |
| DATE:    | MARCH, 2015  |
| SCALE:   | 1" = 5'  |
| SHEET    | 10 OF 14   |

S:\Land Projects\HARTFORD, VILLAGE OF (448213) PIASA LANE.dwg(10 DELMAR INTERSECTION.dwg, 3/25/2015 12:11:51 PM, jiman, 1:5

|                     |         |                    |           |
|---------------------|---------|--------------------|-----------|
| SECTION             | COUNTY  | TOTAL SHEETS       | SHEET NO. |
| 12-00031-01-RS      | MADISON | 14                 | 11        |
| FEDERAL AID PROJECT |         | CONTRACT NO. 97596 |           |



REVISIONS

**SMS ENGINEERS**  
**Sheppard, Morgan & Schwaab, Inc.**  
 CONSULTING ENGINEERS AND LAND SURVEYORS  
 215 Market Street, P.O. Box E, Alton, IL 62002 618-462-9755 E-mail: mail@smsengineers.com  
 10 Central Industrial Drive, Suite 3, Granite City, IL 62040 618-877-8700 E-mail: mail@smsengineers.com  
 DESIGN FIRM # 184-000992

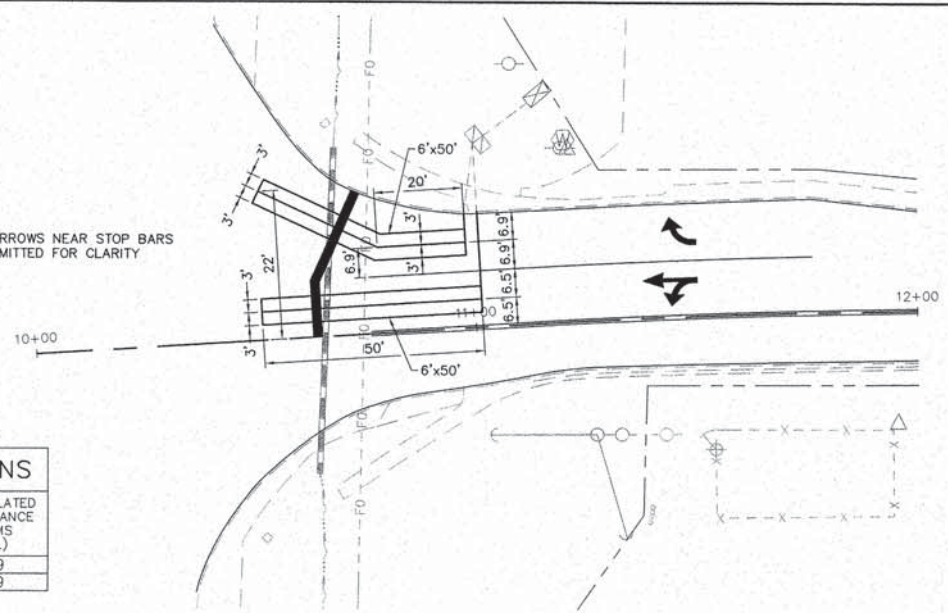
PIASA LANE RESURFACING  
 SECTION 12-00031-01-RS  
 VILLAGE OF HARTFORD  
 PAVEMENT MARKING PLAN & SIGNAGE PLAN

DWG. NO. 12-00031-01-RS  
 REF. BK. 10061 PG. 1  
 JOB NO. 448213  
 DSN. BY: LDA  
 DWN. BY: CAD  
 CHK. BY: LDA  
 DATE: MARCH, 2015  
 SCALE: 1" = 30'  
 SHEET 11 OF 14

| LOOP               | PHASE | LOOP SIZE (FT.) | REQUIRED NO. OF TURNS | LEAD-IN LENGTH (FT.) | CALCULATED INDUCTANCE MICROHENRIES (-μH) | CALCULATED RESISTANCE OHMS (Ω) |
|--------------------|-------|-----------------|-----------------------|----------------------|--|--------------------------------|
| 1. W.B. RIGHT CD   | 4     | 6x50            | 3-6-3                 | 53                   | 797.7                                    | 1.9                            |
| 2. W.B. THRU/LT CD | 4     | 6x50            | 3-6-3                 | 65                   | 800.3                                    | 1.9                            |

NOTE: THE ABOVE VALUES ARE CALCULATED OF COMBINED LOOP AND LEAD-IN INDUCTANCE AND RESISTANCE. ACTUAL MEASURED VALUES SHOULD BE WITHIN +/- 20% OF THESE VALUES.

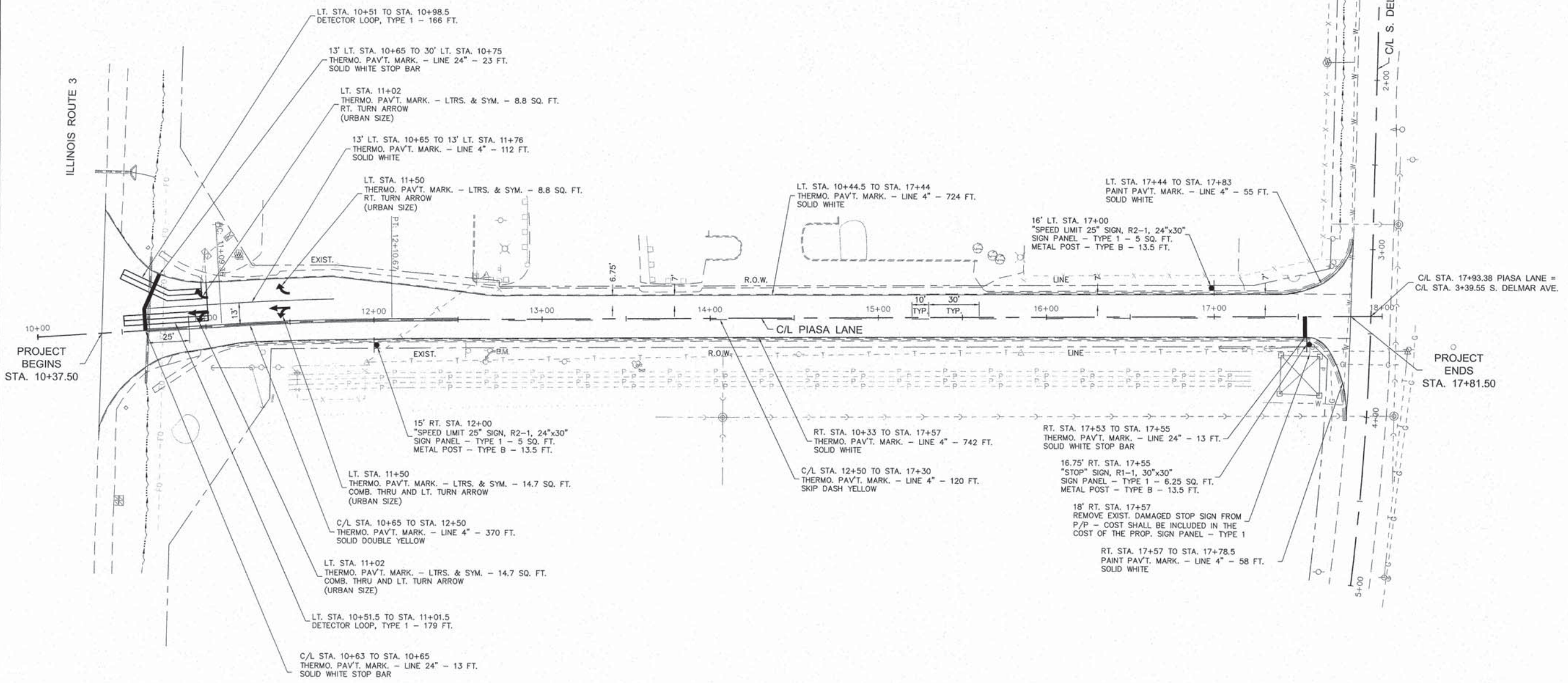
NOTE: ARROWS NEAR STOP BARS OMITTED FOR CLARITY



DETAIL: DETECTOR LOOP LAYOUT  
 SCALE: 1" = 20"

18.8' RT. STA. 0+41.50  
 EXIST. "R/R TRACK AND SIDEROAD" SYMBOL SIGN AND POST TO BE REMOVED.  
 RELOCATE SIGN ON A NEW POST TO 21' RT. STA. 0+41.50

21' RT. STA. 0+41.50  
 RELOCATE EXIST. SIGN PANEL FROM 18.8' RT. STA. 0+41.50  
 RELOCATE SIGN PANEL - TYPE 1 - 6.25 SQ. FT.  
 METAL POST - TYPE B - 16 FT.



S:\Land Projects\HARTFORD, VILLAGE OF (448213) PIASA LANE.dwg(11) PAVEMENT MARKING.dwg 3/25/2015 12:12:15 PM jimma 1:30

| F.A. DIST.   | SECTION | COUNTY  | TOTAL SHEETS | SHEET NO. |
|--------------|---------|---------|--------------|-----------|
| 789          | 202RS-3 | MADISON | 14           | 12        |
| STA. TO STA. |         |         |              |           |

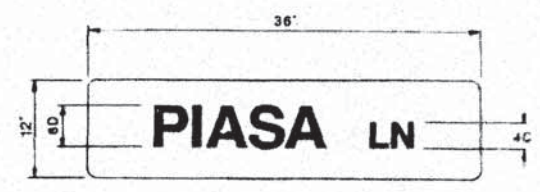
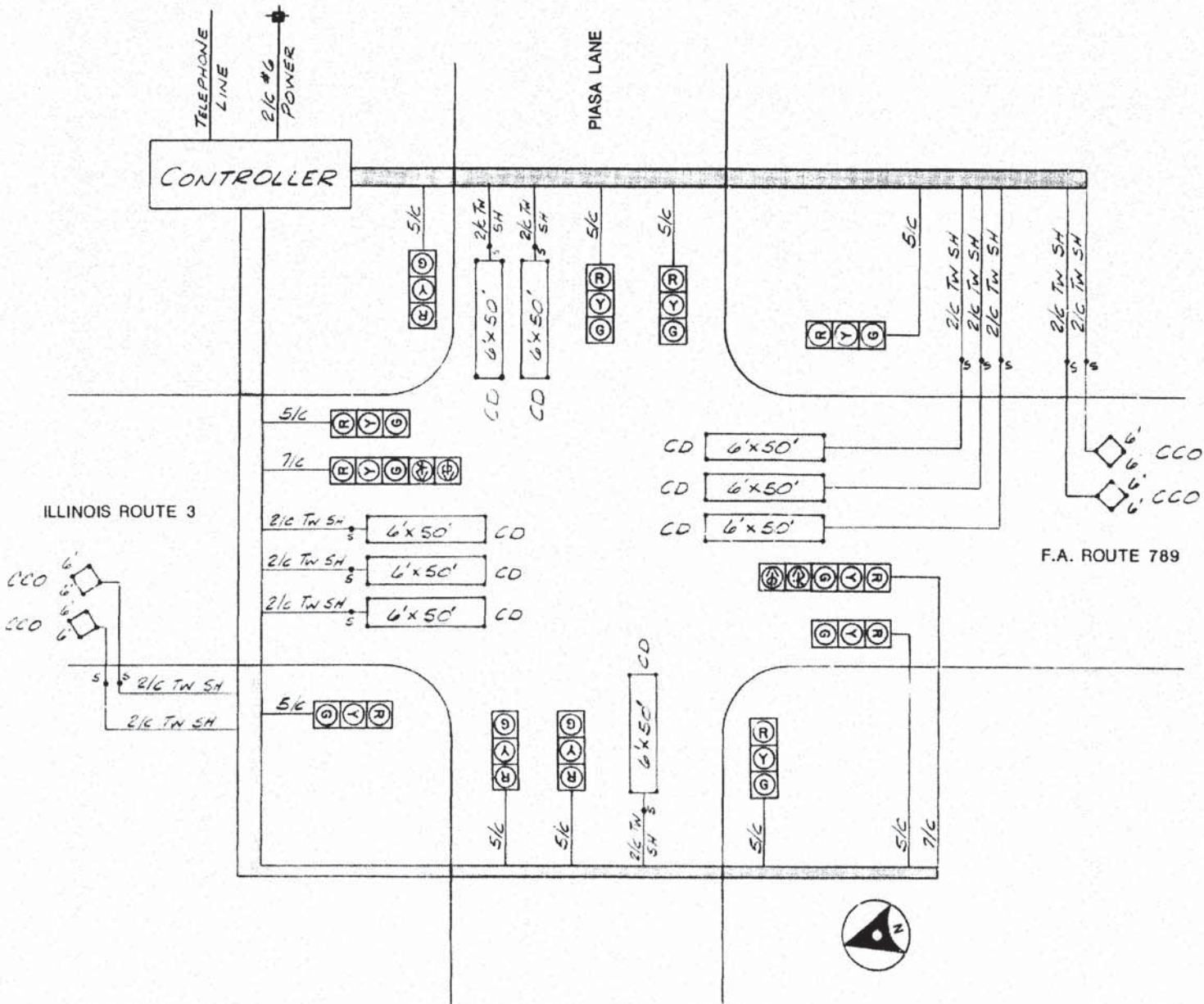
| SECTION             | COUNTY  | TOTAL SHEETS       | SHEET NO. |
|---------------------|---------|--------------------|-----------|
| 12-00031-01-RS      | MADISON | 14                 | 12        |
| FEDERAL AID PROJECT |         | CONTRACT NO. 97596 |           |

REVISIONS

Sheppard, Morgan & Schwaab, Inc.  
CONSULTING ENGINEERS AND LAND SURVEYORS  
215 Menard Street, P.O. Box E, Alton, IL 62002 618/462-2705 E-mail: sm@smengineers.com  
10 Central Industrial Drive, Suite 3, Greenville, IL 62040 618/877-5100 E-mail: mail@smengineers.com  
DESIGN FIRM # 184-000992

**SMS ENGINEERS**

PIASA LANE RESURFACING  
SECTION 12-00031-01-RS  
VILLAGE OF HARTFORD  
CABLE DIAGRAM



- TRAFFIC SIGNALS LEGEND**
- Proposed Signal Head with Backplate, Mast Arm Mounted
  - Proposed Service Installation
  - Proposed Controller
  - Proposed Handhole
  - Proposed Double Handhole
  - Proposed Conduit "T" Trench, "P" Push, Size Specified
  - Proposed Detector Loop
  - Galvanized Steel Conduit
  - Polyvinyl Chloride Conduit
  - Proposed Street Name Sign

- CABLE DIAGRAM LEGEND**
- Electric Cable in Conduit
  - Proposed Service Installation
  - Cable Splice (See General Note #6)
  - 2/C Indicates Numbers of Conductors in Cable
  - Twisted and Shielded Cable
  - Call Delay
  - Call Carry Over
  - #6 symbol"/> #6 Indicates American Wire Gauge (AWG) Size 6 Conductors (See General Notes)

| ITEM   | UNIT QUANTITIES | TOTAL |
|--|-----------------|-------|
| SIGN PANEL - TYPE 1  | SU. FT.         | 6     |
| SIGNAL HEAD, POLYCARBONATE, 1-FACE 3-SECTION, BRACKET MOUNTED        | EACH            | 4     |
| SIGNAL HEAD, POLYCARBONATE, 1-FACE 3-SECTION, MAST ARM MOUNTED       | EACH            | 6     |
| SIGNAL HEAD, POLYCARBONATE, 1-FACE 5-SECTION, MAST ARM MOUNTED       | EACH            | 2     |
| TRAFFIC SIGNAL BACKPLATE   | EACH            | 8     |
| STEEL MAST ARM ASSEMBLY & POLE, 36 FT.                               | EACH            | 2     |
| STEEL MAST ARM ASSEMBLY & POLE, 44 FT.                               | EACH            | 1     |
| STEEL MAST ARM ASSEMBLY & POLE, 50 FT.                               | EACH            | 1     |
| WOOD POLE, 25 FT., CLASS 5   | EACH            | 1     |
| FULL-ACTUATED CONTROLLER, SPECIAL SEQUENCE, 6 PHASE, TYPE IV CABINET | EACH            | 1     |
| INDUCTION LOOP DETECTOR AMPLIFIER                                    | EACH            | 13    |
| DETECTOR LOOP, TYPE 1  | LIN. FT.        | 1729  |
| GALVANIZED STEEL CONDUIT, PUSHED 3"                                  | LIN. FT.        | 58    |
| PVC CONDUIT IN TRENCH 1"   | LIN. FT.        | 166   |
| PVC CONDUIT IN TRENCH 1 1/2"   | LIN. FT.        | 76    |
| PVC CONDUIT IN TRENCH 2"   | LIN. FT.        | 216   |

| ITEM   | UNIT QUANTITIES | TOTAL |
|--|-----------------|-------|
| PVC CONDUIT IN TRENCH 2 1/2"                           | LIN. FT.        | 301   |
| PVC CONDUIT IN TRENCH 3"                               | LIN. FT.        | 148   |
| PVC CONDUIT IN TRENCH 4"                               | LIN. FT.        | 26    |
| ELECTRIC CABLE IN CONDUIT NO. 6 2/C                    | LIN. FT.        | 15    |
| ELECTRIC CABLE IN CONDUIT NO. 14 5/C                   | LIN. FT.        | 2615  |
| ELECTRIC CABLE IN CONDUIT NO. 14 7/C                   | LIN. FT.        | 537   |
| ELECTRIC CABLE IN CONDUIT NO. 14 2/C TWISTED, SHIELDED | LIN. FT.        | 3946  |
| SERVICE INSTALLATION, TYPE A (MODIFIED)                | EACH            | 1     |
| CONCRETE FOUNDATION, TYPE D                            | LIN. FT.        | 3.5   |
| CONCRETE FOUNDATION, TYPE E 30-INCH DIAMETER           | LIN. FT.        | 50    |
| CONCRETE HANDHOLE                                      | EACH            | 5     |
| CONCRETE DOUBLE HANDHOLE                               | EACH            | 1     |
| TRENCH AND BACKFILL                                    | LIN. FT.        | 1449  |
| TRENCH AND BACKFILL (SPECIAL)                          | LIN. FT.        | 40    |
| INTERSECTION MONITOR UNIT                              | EACH            | 1     |

FOR INFORMATION ONLY

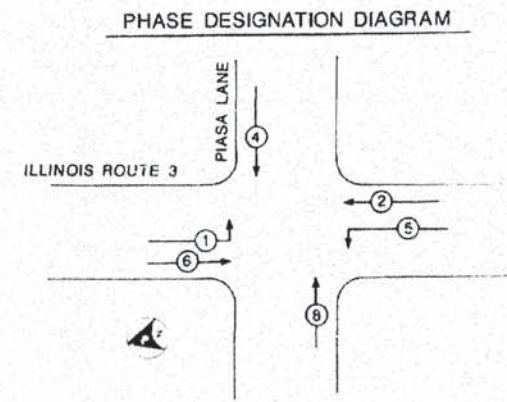
ILLINOIS DEPARTMENT OF TRANSPORTATION

**CABLE DIAGRAM**  
ILL. RTE. 7 & PIASA LANE  
F.A.P. ROUTE 789  
SECTION 202RS-3  
MADISON COUNTY

| REVISIONS |      |
|-----------|------|
| NAME      | DATE |
|           |      |
|           |      |
|           |      |
|           |      |

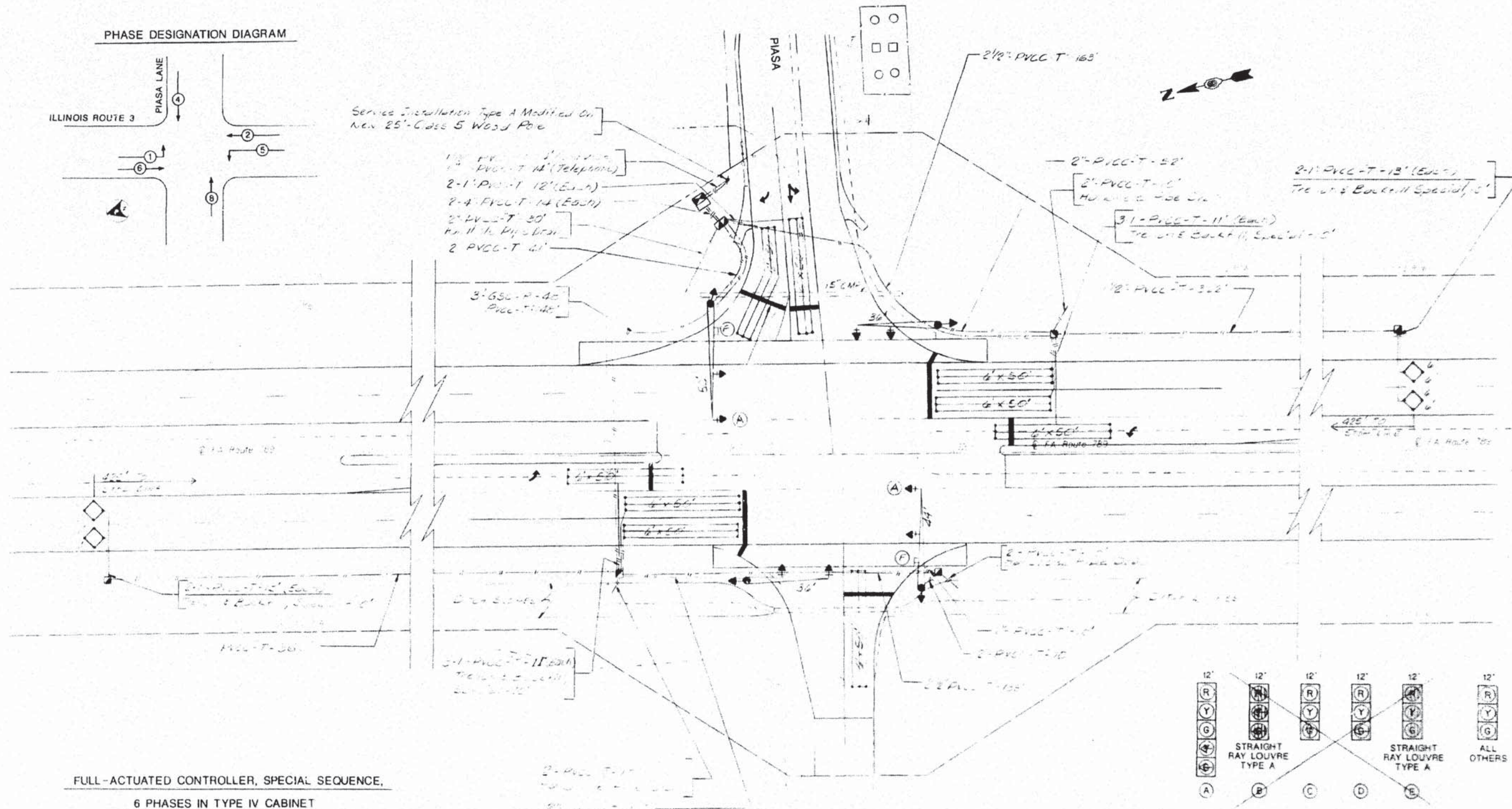
DATE \_\_\_\_\_ DRAWN BY **CSB** CHECKED BY \_\_\_\_\_ SCALE: NOT TO SCALE SHEET 12 OF 14

S:\Land Projects\HARTFORD, VILLAGE OF (448213) PIASA LANE\dwg\12.IDOT CABLE DIAGRAM.dwg, 3/25/2015 11:13:56 AM, jman, 1:1



Service Installation Type A Modified On  
 New 25'-Class 5 Wood Pole

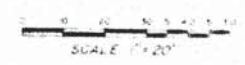
1-1 PVCC-T-14' (Telephone)  
 2-1 PVCC-T-12' (EACH)  
 2-4 PVCC-T-14' (EACH)  
 2-2V-T-30'  
 No. 11 to Pole Base  
 2 PVCC-T-41'



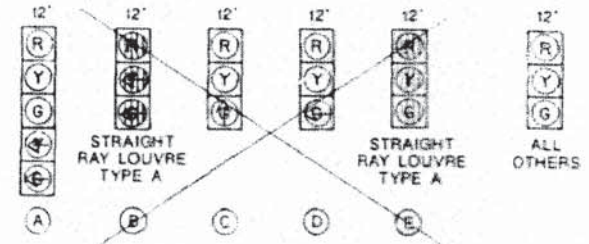
FULL-ACTUATED CONTROLLER, SPECIAL SEQUENCE,  
 6 PHASES IN TYPE IV CABINET

| PROPOSED OPERATION            |        |        |          |   |        |        |          |   |
|-------------------------------|--------|--------|----------|---|--------|--------|----------|---|
| PHASE Ø                       | 1      | 2      | 3        | 4 | 5      | 6      | 7        | 8 |
| MOVEMENT                      | →      | ←      |          | ↓ | ↑      | →      |          | ↑ |
| CONCURRENT MOVEMENT PERMITTED | 5 OR 6 | 5 OR 6 | NOT USED | 8 | 1 OR 2 | 1 OR 2 | NOT USED | 4 |

NOTE: PHASE 4 AND PHASE 8 SHALL TIME CONCURRENTLY.



FOR INFORMATION ONLY



EXISTING AND PROPOSED SIGNAL FACES

ILLINOIS DEPARTMENT OF TRANSPORTATION  
 TRAFFIC SIGNAL PLAN  
 ILL. RTE. 3 & PIASA  
 F&P ROUTE 789  
 SECTION 202RS-3  
 MADISON COUNTY

REVISIONS

**SMS ENGINEERS**  
 Sheppard, Morgan & Schwaab, Inc.  
 CONSULTING ENGINEERS AND LAND SURVEYORS  
 215 Market Street, P.O. Box E, Alton, IL 62002 618462-9755 E-mail: mail@smsengineers.com  
 10 Central Industrial Drive, Suite 3, Granite City, IL 62040 618377-4700 E-mail: mail@smsengineers.com  
 DESIGN FIRM # 184-000992

PIASA LANE RESURFACING  
 SECTION 12-00031-01-RS  
 VILLAGE OF HARTFORD  
 TRAFFIC SIGNAL PLAN

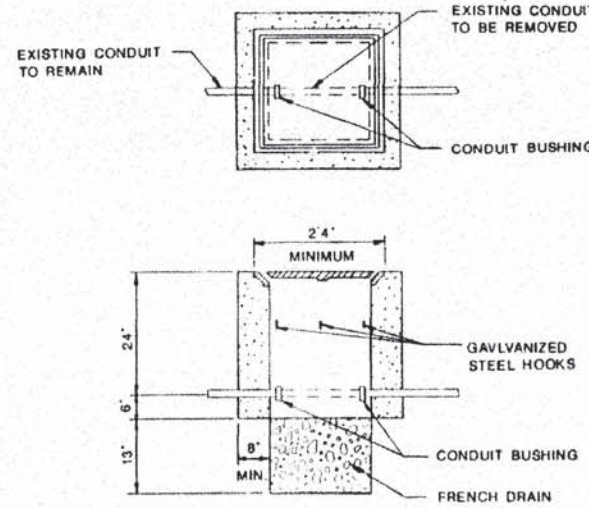
DWG. NO. 12-00031-01-RS  
 ILL. DOT TRAFFIC SIGNAL PLAN/DWG  
 REF. BK. 10061 PG. 1  
 JOB NO. 448213  
 DSN. BY: LDA  
 DWN. BY: CAD  
 CHR. BY: LDA  
 DATE: MARCH, 2015  
 SCALE: NOT TO SCALE  
 SHEET 13 OF 14

S:\Land Projects\HARTFORD, VILLAGE OF (448213.D) PIASA LANE\DWG\13 IDOT TRAFFIC SIGNAL PLAN.dwg, 3/25/2015 11:13:41 AM, jiman, 11

|           |         |         |              |           |
|-----------|---------|---------|--------------|-----------|
| F.A. #/E. | SECTION | COUNTY  | TOTAL SHEETS | SHEET NO. |
| 789       | 202RS-3 | MADISON | 14           | 14        |
| STA.      | TO STA. |         |              |           |

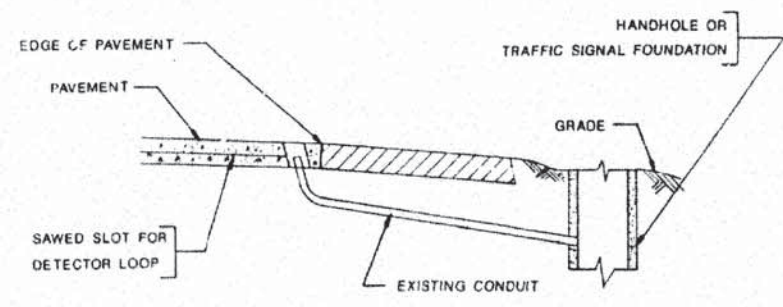
|                     |         |                    |           |
|---------------------|---------|--------------------|-----------|
| SECTION             | COUNTY  | TOTAL SHEETS       | SHEET NO. |
| 12-00031-01-RS      | MADISON | 14                 | 14        |
| FEDERAL AID PROJECT |         | CONTRACT NO. 97596 |           |

REVISIONS



**DETAIL G**  
HANDHOLE TO INTERCEPT EXISTING CONDUIT\*  
\*NOT A PAY ITEM

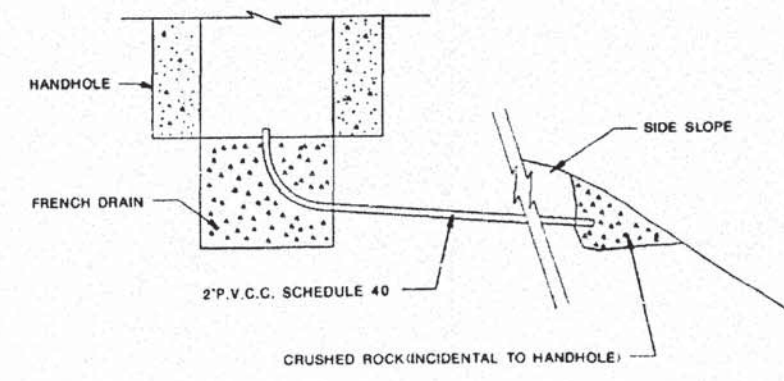
1. REMOVAL OF EXISTING CONDUIT FROM THE HANDHOLE AND THE INSTALLATION OF THE CONDUIT BUSHING SHALL BE INCIDENTAL TO THE HANDHOLE.
2. THE CONTRACTOR SHALL BE PAID TO LOCATE THE CONDUIT UNDER OTHER PROVISIONS OF THIS CONTRACT. SEE 'LOCATING UNDERGROUND CABLE' IN THE SPECIAL PROVISIONS.



**DETAIL H**  
LEAD-IN CONDUIT TO BE RE-USED  
(NOT TO SCALE)

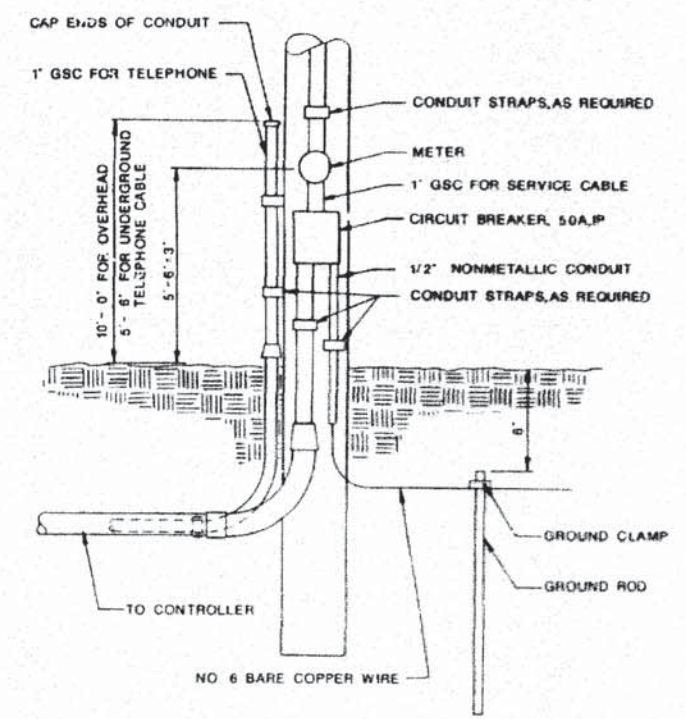
1. DRILL OUT PAVEMENT SEALANT & CLEAN EXISTING CONDUIT.
2. REMOVE EXISTING CABLE TO HANDHOLE.
3. INSTALL NEW LOOP LEAD-INS.

NOT A PAY ITEM. THE COST OF THIS WORK SHALL BE INCLUDED IN THE PAY ITEM, 'DETECTOR LOOP, TYPE 1'.

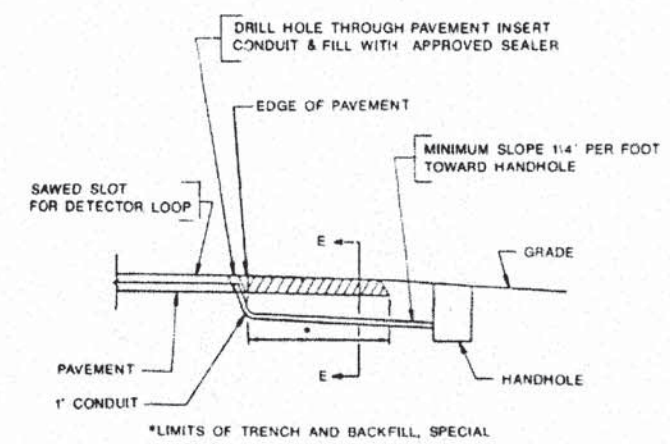


- NOTES:**
1. The pipe will be paid for as PVC Conduit in Trench, 2\".
  2. The trench will be paid for as Trench & Backfill.
  3. The exact length of the pipe drain will be determined by the conditions in the field.

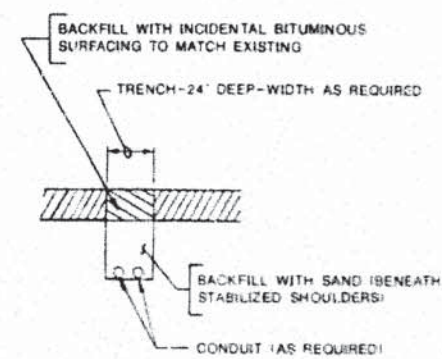
**HANDHOLE PIPE DRAIN DETAIL**  
(NOT TO SCALE)



**SERVICE INSTALLATION**  
TYPE 'A' MODIFIED  
(NOT TO SCALE)



**TRENCH AND BACKFILL, SPECIAL**  
(NOT TO SCALE)



**SECTION E-E**  
(NOT TO SCALE)

FOR INFORMATION ONLY

ILLINOIS DEPARTMENT OF TRANSPORTATION

ELECTRICAL DETAILS

F.A.P. ROUTE 789  
SECTION 202RS-3  
MADISON COUNTY

| REVISIONS |      |
|-----------|------|
| NAME      | DATE |
|           |      |
|           |      |
|           |      |
|           |      |
|           |      |

DATE

DRAWN BY: CBB  
CHECKED BY:

|          |                                |
|----------|--------------------------------|
| DWG. NO. | 14 IDOT ELECTRICAL DETAILS.DWG |
| REF. BK. | 10061 PG. 1                    |
| JOB NO.  | 448213                         |
| DSN. BY: | LDA                            |
| DWN. BY: | CAD                            |
| CHK. BY: | LDA                            |
| DATE:    | MARCH, 2015                    |
| SCALE:   | NOT TO SCALE                   |
| SHEET    | 14 OF 14                       |

**SMS ENGINEERS**  
Sheppard, Morgan & Schwaab, Inc.  
CONSULTING ENGINEERS AND LAND SURVEYORS  
115 Market Street, P.O. Box E, Alton, IL 62903, 618462-2752, E-mail: smsemail@msse.com  
10 Central Industrial Drive, Suite 3, Granite City, IL 62040, 618977-7070, E-mail: mail@msse.com  
DESIGN FIRM # 184-000992

PIASA LANE RESURFACING  
SECTION 12-00031-01-RS  
VILLAGE OF HARTFORD  
ELECTRICAL DETAILS