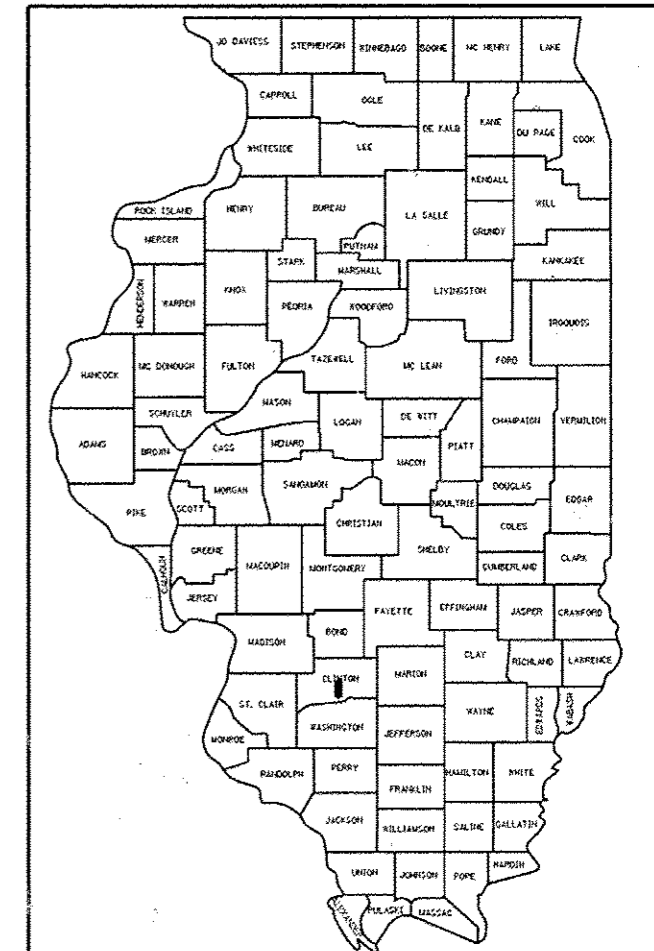


STATE OF ILLINOIS  
 DEPARTMENT OF TRANSPORTATION  
 DIVISION OF HIGHWAYS  
**PROPOSED  
 HIGHWAY PLANS**

FAS ROUTE 784 – COUNTY HIGHWAY 11  
 (JAMESTOWN ROAD) & HOLY CROSS LANE  
 SECTION 09-00095-01-SS  
 PROJECT NO. RS-0027(045)  
 FEDERAL AID PROJECT  
 CLINTON COUNTY  
 JOB NO. C-98-331-12

F.A.S. RTE.	SECTION	COUNTY	TOTAL SHEETS	SHEET NO.
784	09-00095-01-SS	CLINTON	24	1
FEDERAL AID PROJECT		ILLINOIS	CONTRACT NO. 97598	

FOR INDEX OF SHEETS, SEE SHEET NO. 2  
 FOR HIGHWAY STANDARDS SEE SHEET NO. 2



LOCATION OF SECTION INDICATED THUS: — ■ —

STATE OF ILLINOIS  
 DEPARTMENT OF TRANSPORTATION  
 DIVISION OF HIGHWAYS

APPROVED *April 3 2015*  
 Dan Behrens, P.E., CLINTON CO. HWY. ENGINEER

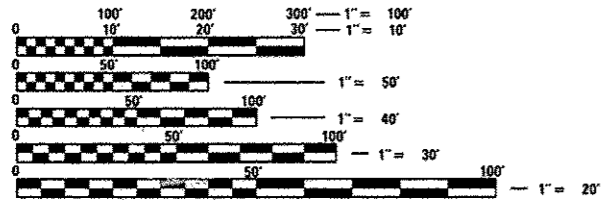
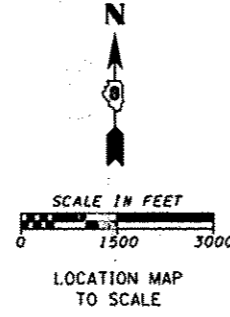
PASSED *April 13 2015*  
 DISTRICT 8 ENGINEER OF LOCAL ROADS & STREETS

RELEASING FOR BID BASED ON LIMITED REVIEW *April 13 2015*  
 DEPUTY DIRECTOR OF HIGHWAYS, REGION FIVE ENGINEER

PRINTED BY THE AUTHORITY OF THE STATE OF ILLINOIS

HMG PREPARED BY:  
 HMG ENGINEERS, INC.  
 1075 LAKE ROAD, BOX 184  
 CARLYLE, ILLINOIS 62201  
 REGISTERED PROFESSIONAL ENGINEER  
 (618) 594-3711

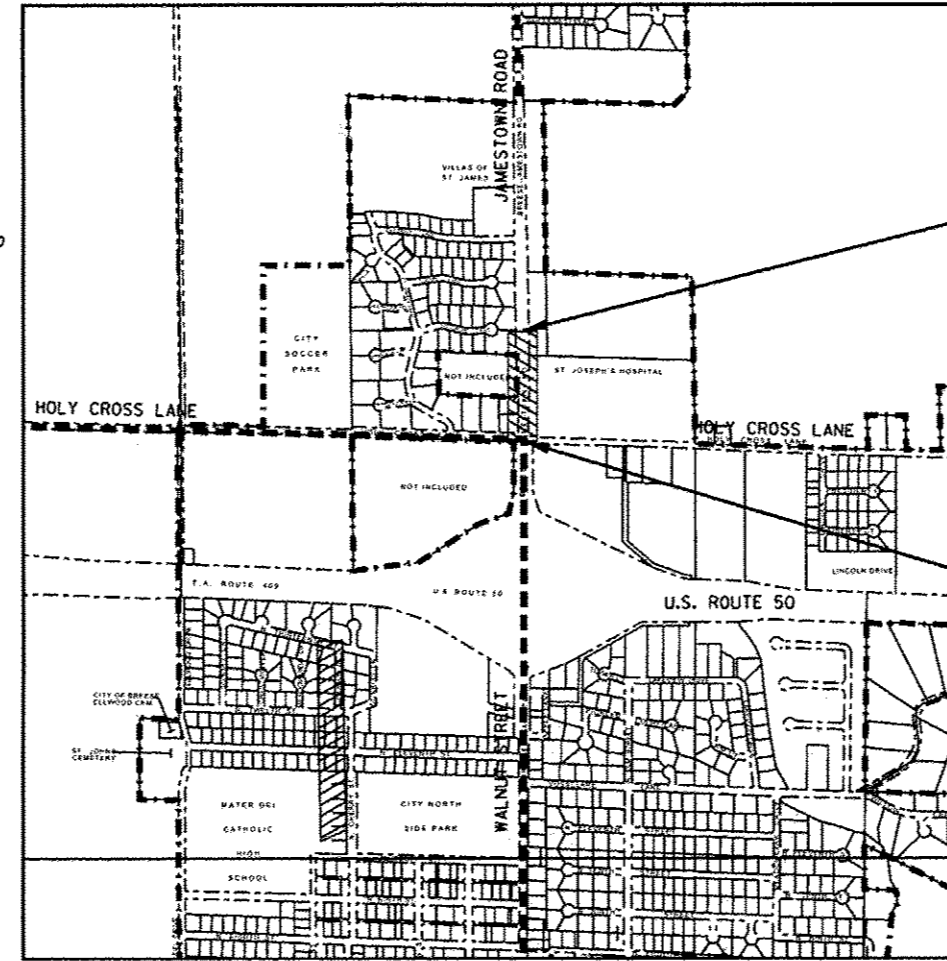
*Christopher R. Wilson*  
 CHRISTOPHER R. WILSON, P.E.  
 LICENSED PROFESSIONAL ENGINEER OF ILLINOIS, NO. 062-051234  
 REGISTRATION EXPIRES NOVEMBER 30, 2015



FULL SIZE PLANS HAVE BEEN PREPARED USING STANDARD ENGINEERING SCALES. REDUCED SIZED PLANS WILL NOT CONFORM TO STANDARD SCALES. IN MAKING MEASUREMENTS ON REDUCED PLANS, THE ABOVE SCALES MAY BE USED.

J.U.L.I.E.  
 JOINT UTILITY LOCATION INFORMATION FOR EXCAVATION  
 1-800-892-0123  
 OR 811

ROADWAY DESIG.: MAJOR COLLECTOR – RURAL  
 DESIGN SPEED: 35 MPH  
 CURRENT ADT (2014–S. LEG C.H. 11): 6,185  
 DESIGN YEAR ADT (2024–S. LEG C.H. 11): 7,414



--- FAS RTE. 784  
 [Hatched Box] CONSTRUCTION LIMITS

END PROJECT STA. 40+75

BEGIN PROJECT STA. 32+16

LENGTH OF IMPROVEMENTS  
 [Hatched Box] GROSS LENGTH = 861 FT. = 0.163 MILE  
 NET LENGTH = 859 FT. = 0.163 MILE

**GENERAL NOTES**

- ALL ELEVATIONS REFER TO U.S.G.S. MEAN SEA LEVEL DATUM.
- THE PRIME CONTRACTOR SHALL BE RESPONSIBLE FOR ALL SUB-CONTRACTED WORK, REGARDLESS OF FUNDING SOURCE. THE SPECIAL PROVISIONS, SPECIFICATIONS, AND STANDARD SPECIFICATIONS SHALL GOVERN CONTRACTUAL REQUIREMENTS FOR SAID ARRANGEMENTS.
- THE PRIME CONTRACTOR SHALL BE RESPONSIBLE FOR TRAFFIC CONTROL AND PROTECTION.
- THE CONTRACTOR SHALL EXERCISE CARE IN EXCAVATING AROUND EXISTING UTILITIES TO REMAIN IN PLACE, SUCH AS WATER AND SEWER MAINS, AND SHALL BE RESPONSIBLE FOR REPAIR OF THESE AND MAINTENANCE OF SERVICE, IF DAMAGED BY THE CONTRACTOR'S ACTIVITIES, AS DEEMED SUCH BY THE ENGINEER.
- THE CONTRACTOR SHALL BE RESPONSIBLE FOR ESTABLISHING POSITIVE DRAINAGE IN THE DISTURBED AREAS, TO THE SATISFACTION OF THE ENGINEER.
- ALL AREAS THAT ARE DISTURBED BEYOND THE SEEDING LIMITS SHALL BE GRADED BY THE CONTRACTOR AT HIS/HER EXPENSE, IN THE SAME MANNER AS FINAL GRADING WORK PER THE SPECIFICATIONS, TO THE SATISFACTION OF THE ENGINEER.
- REMOVAL OF EXISTING OIL AND CHIP SURFACE, AGGREGATE, AND CURB HAS BEEN INCLUDED IN PATCHING QUANTITIES AND WILL BE PAID FOR AT THE CONTRACT UNIT PRICE PER SQ. YD. FOR PATCHES OF THE CLASS, TYPE, AND THICKNESS SPECIFIED.
- ALL ADVANCED WARNING SIGNS SHALL BE 48" FLUORESCENT ORANGE.
- IF ASH TREES ARE REMOVED ON THE PROJECT, THE CONTRACTOR SHALL BECOME FAMILIAR WITH AND COMPLY WITH MEASURES SPECIFIED BY THE ILLINOIS DEPARTMENT OF AGRICULTURE (IDOA) TO PREVENT THE SPREAD OF THE EMERALD ASH BORER. THE IDOA INFORMATION FOR ASH TREE REMOVAL CAN BE FOUND ON THE IDOA WEBSITE AT [WWW.AGR.STATE.IL.US/EAB](http://WWW.AGR.STATE.IL.US/EAB).
- THE FOLLOWING RATES OF APPLICATION HAVE BEEN USED IN CALCULATING PLAN QUANTITIES.

**INDEX OF SHEETS**

- COVER SHEET
- INDEX OF SHEETS, GENERAL NOTES, UTILITY COMPANIES, AND LIST OF HIGHWAY STANDARDS
- SUMMARY OF QUANTITIES
- 5. TYPICAL SECTIONS
- STORM SEWER SCHEDULE
- 8. SCHEDULES
- ALIGNMENTS, EXISTING R.O.W., PROPERTY OWNERS, BENCH MARKS
- 13. PLAN & PROFILES
- 15. EROSION CONTROL
- STORM SEWER DETAILS
- 24. CROSS SECTIONS

**COMMITMENTS**

NONE

**APPLICATION RATES**

AGGREGATE MATERIALS 2.05 TONS/CU YD  
 GRANULAR MATERIALS 2.05 TONS/CU YD

FOR SEEDED AREAS  
 NITROGEN FERTILIZER NUTRIENT 90 LBS/ACRE  
 PHOSPHORUS FERTILIZER NUTRIENT 90 LBS/ACRE  
 POTASSIUM FERTILIZER NUTRIENT 90 LBS/ACRE  
 LIME 2 TONS/ACRE  
 TEMPORARY EROSION CONTROL SEEDING 100 LB/ACRE

**KNOWN UTILITY COMPANIES**

STORM SEWER, WATER, SANITARY SEWER, AND BURIED ELECTRIC (BOTH POWER & STREET LIGHTS):  
 CITY OF BREESE  
 500 NORTH FIRST STREET  
 BREESE, ILLINOIS 62230  
 ATTENTION:  
 DON VOSS, PUBLIC WORKS MANAGER  
 TELEPHONE: (618) 526-7151  
 EMAIL: [dvoss@charter.net](mailto:dvoss@charter.net)

NATURAL GAS:  
 AMEREN IP  
 1050 WEST BOULEVARD  
 PO BOX 428, MC P-10  
 BELLEVILLE, ILLINOIS 62222  
 ATTENTION:  
 RON CRANNAGE, SENIOR FIELD ENGINEERING REPRESENTATIVE  
 TELEPHONE: (618) 236-4365  
 EMAIL: [RCrannage@ameren.com](mailto:RCrannage@ameren.com)

FIBER OPTIC AND COPPER, BURIED:  
 AT&T  
 203 GOETHE STREET, FLOOR 2 1/2  
 COLLINSVILLE, ILLINOIS 62234  
 ATTENTION:  
 DEAN LITZENBURG, MANAGER  
 OSP PLANNING & ENGINEERING DESIGN  
 TELEPHONE: (618) 346-6422, 402-9819  
 EMAIL: [dll6686@att.com](mailto:dll6686@att.com)

CABLE TV, OVERHEAD ON O.H.E.:  
 CHARTER COMMUNICATIONS  
 4767 SIGNATURE INDUSTRIAL DRIVE  
 EDWARDSVILLE, ILLINOIS 62025  
 ATTENTION:  
 GARRY WARREN  
 TELEPHONE: (618) 779-4179  
 EMAIL: [Garry.Warren@charter.com](mailto:Garry.Warren@charter.com)

OVERHEAD ELECTRIC (O.H.E.):  
 CLINTON COUNTY ELECTRIC COOPERATIVE, INC.  
 475 NORTH MAIN STREET,  
 PO BOX 40  
 BREESE, ILLINOIS 62230-0040  
 ATTENTION:  
 AARON LANGHAUSER  
 TELEPHONE: (618) 526-7282  
 EMAIL: [langhauser@cceci.com](mailto:langhauser@cceci.com)

FIBER OPTIC (FOR HOSPITAL):  
 IHRN (NIU BROADBAND DEVELOPMENT GROUP)  
 ATTENTION:  
 STEVE FEDECZKO  
 TELEPHONE: (815) 753-8946  
 EMAIL: [sfedeczko@niu.edu](mailto:sfedeczko@niu.edu)  
 G45 TECHNOLOGY, LLC  
 ATTENTION:  
 CHRIS ROBERTS  
 TELEPHONE: (815) 405-1358  
 EMAIL: [christopher.roberts@usa.gs4.com](mailto:christopher.roberts@usa.gs4.com)

**LIST OF HIGHWAY STANDARDS**

- 00001-06 STANDARD SYMBOLS, ABBREVIATIONS AND PATTERNS
- 001001-02 AREAS OF REINFORCEMENT BARS
- 001006 DECIMAL OF AN INCH AND OF A FOOT
- 280001-07 TEMPORARY EROSION CONTROL SYSTEMS
- 442201-03 CLASS C & D PATCHES
- 542301-03 PRECAST REINFORCED CONCRETE FLARED END SECTION
- 542606-02 REINFORCED CONCRETE PIPE TEE
- 602301-04 INLET - TYPE A
- 602306-03 INLET - TYPE B
- 602401-03 MANHOLE TYPE A
- 602421-04 MANHOLE TYPE A 9' DIAMETER
- 602601-03 PRECAST REINFORCED CONCRETE FLAT SLAB TOP
- 602701-02 MANHOLE STEPS
- 604001-04 FRAME AND LIDS TYPE 1
- 604036-03 GRATE TYPE 8
- 701001-04 OFF-RD OPERATIONS, 2L, 2W, MORE THAN 15' AWAY
- 701006-05 OFF-RD OPERATIONS, 2L, 2W, 15' TO 24" FROM PAVEMENT EDGE
- 701011-04 OFF-RD MOVING OPERATIONS, 2L, 2W, DAY ONLY
- 701301-04 LANE CLOSURE, 2L, 2W, SHORT TIME OPERATIONS
- 701311-03 LANE CLOSURE 2L, 2W MOVING OPERATIONS - DAY ONLY
- 701501-06 URBAN LANE CLOSURE, 2L, 2W, UNDIVIDED
- 701901-04 TRAFFIC CONTROL DEVICES
- 720001-01 SIGN PANEL MOUNTING DETAILS
- 720006-04 SIGN PANEL ERECTION DETAILS
- 720011-01 METAL POSTS FOR SIGNS, MARKERS & DELINEATORS

FILE NAME = 6382-7rgennotes.dgn	USER NAME = c:\ibon	DESIGNED -	REVISED -	<b>STATE OF ILLINOIS DEPARTMENT OF TRANSPORTATION</b>	<b>INDEX, GENERAL NOTES, STANDARDS APPLICATION RATES, &amp; UTILITIES</b>	F.A. RTE.	SECTION	COUNTY	TOTAL SHEETS	SHEET NO.	
H: 6382 Breeze Pounds about 6382Design 6382-7rgennotes.dgn	PLOT SCALE = 20.0000 in.	DRAWN -	REVISED -			784	09-00095-01-S5	CLINTON	24	2	
HMC JOB NO. 6382.007	PLOT DATE = 4-3-2015	CHECKED -	REVISED -			CONTRACT NO. 97598					
						SCALE:	SHEET NO.	OF	SHEETS	STA.	TO STA.

HMC ENGINEERS INC 1075 LAKE ROAD PO BOX 70 CARLYLE IL 62931 PHONE (618) 594-3711 WWW.HMCENGINEERS.COM

SUMMARY OF QUANTITIES

CODE NO.	ITEM	UNIT	TOTAL QUANTITIES
20200100	EARTH EXCAVATION	CU. YD.	123.0
20400800	FURNISHED EXCAVATION	CU. YD.	613.8
25000210	SEEDING, CLASS 2A	ACRE	0.95
25000400	NITROGEN FERTILIZER NUTRIENT	POUND	85
25000500	PHOSPHORUS FERTILIZER NUTRIENT	POUND	85
25000600	POTASSIUM FERTILIZER NUTRIENT	POUND	85
25000700	AGRICULTURAL GROUND LIMESTONE	TON	1.9
25100115	MULCH, METHOD 2	ACRE	0.2
25100635	HEAVY DUTY EROSION CONTROL BLANKET	SO. YD.	3,453.0
28000250	TEMPORARY EROSION CONTROL SEEDING	POUND	94.7
28000305	TEMPORARY DITCH CHECKS	FOOT	304
28000500	INLET AND PIPE PROTECTION	EACH	30
28100705	STONE DUMPED RIPRAP, CLASS A3	SO. YD.	55.0
28200200	FILTER FABRIC	SO. YD.	55.0
35100700	AGGREGATE BASE COURSE, TYPE A 8"	SO. YD.	168.8
40201000	AGGREGATE FOR TEMPORARY ACCESS	TON	52
44000600	SIDEWALK REMOVAL	SO. FT.	83.8
44201329	CLASS C PATCHES, TYPE II, 8 INCH	SO. YD.	28.8
44201335	CLASS C PATCHES, TYPE IV, 8 INCH	SO. YD.	33.3
54213681	PRECAST SREINFORCED CONCRETE FLARED END SECTIONS 36"	EACH	2
54216200	REINFORCED CONCRETE PIPE TEE, 24" PIPE WITH 12" RISER	EACH	2
54216220	REINFORCED CONCRETE PIPE TEE, 36" PIPE WITH 12" RISER	EACH	3
54216597	REINFORCED CONCRETE PIPE TEE, 36" PIPE WITH 15" RISER	EACH	8
54216960	REINFORCED CONCRETE PIPE TEE, 36" PIPE WITH 18" RISER	EACH	2
54217700	REINFORCED CONCRETE PIPE TEE, 36" PIPE WITH 24" RISER	EACH	1
54248510	CONCRETE COLLAR	CU. YD.	2.5
550A0340	STORM SEWERS, CLASS A, TYPE 2 12"	FOOT	51.0
550A0360	STORM SEWERS, CLASS A, TYPE 2 15"	FOOT	16.8

SUMMARY OF QUANTITIES

CODE NO.	ITEM	UNIT	TOTAL QUANTITIES
550A0380	STORM SEWERS, CLASS A, TYPE 2 18"	FOOT	4.0
550A0410	STORM SEWERS, CLASS A, TYPE 2 24"	FOOT	229.3
550A0450	STORM SEWERS, CLASS A, TYPE 2 36"	FOOT	965.3
550B2600	STORM SEWERS, RUBBER GASKET, CLASS B, TYPE 2 36"	FOOT	172.0
55100500	STORM SEWER REMOVAL 12"	FOOT	38.5
55100900	STORM SEWER REMOVAL 18"	FOOT	48.0
55101200	STORM SEWER REMOVAL 24"	FOOT	399.2
60100905	PIPE DRAINS 4"	FOOT	3.7
60100925	PIPE DRAINS 8"	FOOT	2.0
60224470	MANHOLES, TYPE A, 9"-DIAMETER, TYPE 1 FRAME, OPEN LID	EACH	1
60236200	INLETS, TYPE A, TYPE 8 GRATE	EACH	4
60240215	INLETS, TYPE B, TYPE 1 FRAME, CLOSED LID	EACH	4
60240301	INLETS, TYPE B, TYPE 8 GRATE	EACH	8
60257900	MANHOLES TO BE RECONSTRUCTED	EACH	2
60500060	REMOVING INLETS	EACH	4
67100100	MOBILIZATION	LUMP SUM	1
70102620	TRAFFIC CONTROL AND PROTECTION, STANDARD 701501	LUMP SUM	1
X0322208	TEMPORARY STORM SEWER PLUGS	EACH	5
X2090215	SELECT GRANULAR BACKFILL, SPECIAL	CU. YD.	566.2
X4420706	CLASS B PATCHES, TYPE IV, 7 INCH (SPECIAL)	SO. YD.	95.6
X5422015	REINFORCED CONCRETE PIPE TEE, SPECIAL	EACH	2
X6020099	MANHOLES, TYPE A, 9"-DIAMETER, WITH SPECIAL FRAME AND GRATE	EACH	4
X6024502	INLETS, TYPE B, WITH SPECIAL FRAME AND GRATE	EACH	2
X7010216	TRAFFIC CONTROL AND PROTECTION, (SPECIAL)	LUMP SUM	1
Z0018100	DRAINAGE STRUCTURE RECONSTRUCTION (SPECIAL)	EACH	1

• = SPECIAL PROVISION ITEMS  
S = SPECIALTY ITEMS

FILE NAME : 6382-7-summaryofquant.dgn  
H:\6382 Breese Roundabout 6382Design\6382-7-summaryofquant.dgn  
HMC JOB NO. 6382.007

USER NAME : caulson  
PLOT SCALE : 20.0000 in.  
PLOT DATE : 4-3-2015

DESIGNED -  
DRAWN -  
CHECKED -  
DATE -

REVISED -  
REVISED -  
REVISED -  
REVISED -

STATE OF ILLINOIS  
DEPARTMENT OF TRANSPORTATION

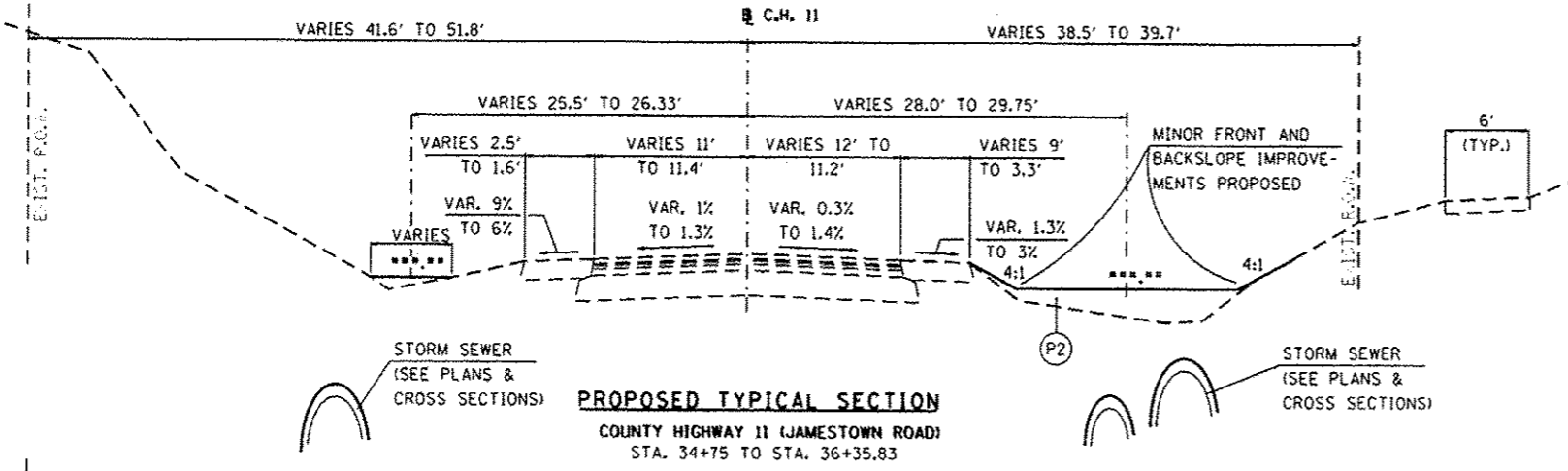
SUMMARY OF QUANTITIES

SCALE: SHEET NO. OF SHEETS STA. TO STA.

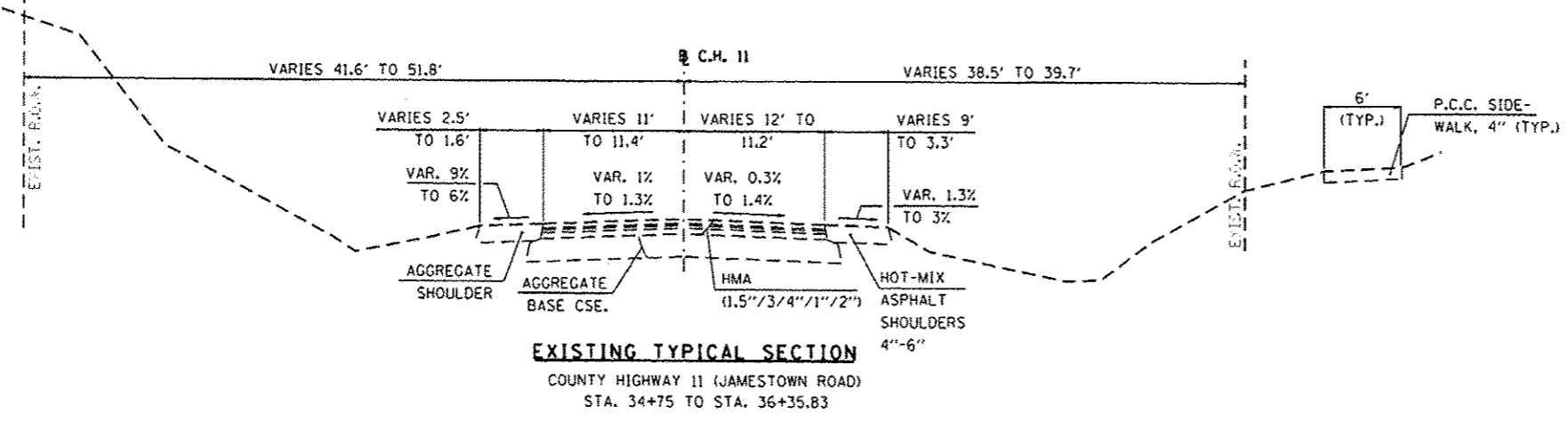
F.A. RTE.	SECTION	COUNTY	TOTAL SHEETS	SHEET NO.
784	09-00095-01-55	CLINTON	24	3
CONTRACT NO. 97598			ILLINOIS FED. AID PROJECT	

**LEGEND**

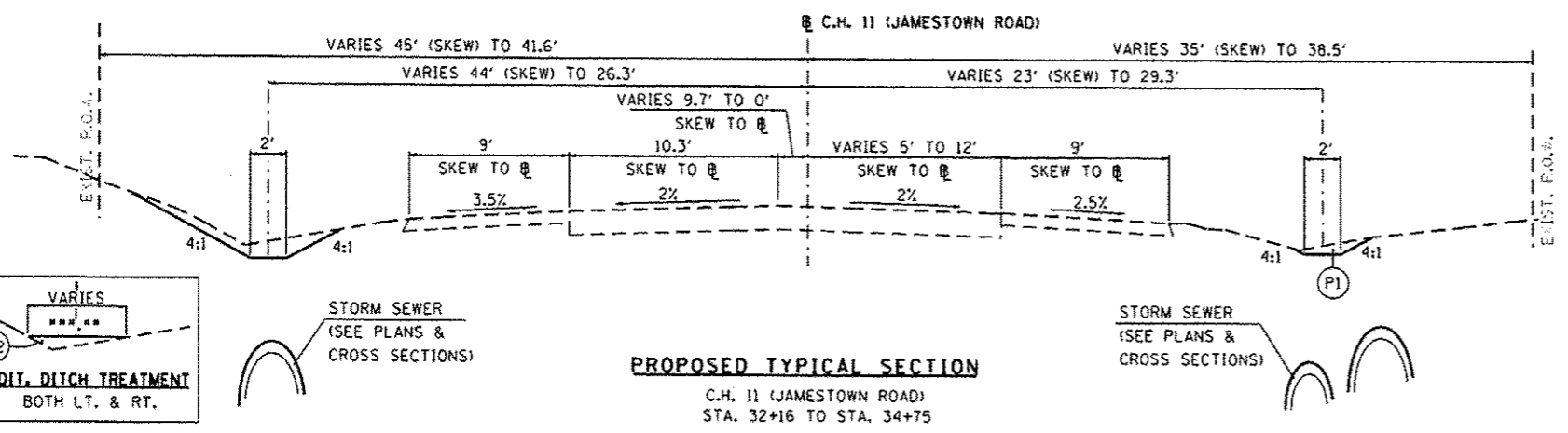
- (P1) EARTH EXCAVATION
- (P2) EMBANKMENT
- \*\*\* \*\* SEE PLANS AND CROSS SECTIONS FOR DITCH ELEVATIONS



**PROPOSED TYPICAL SECTION**  
 COUNTY HIGHWAY 11 (JAMESTOWN ROAD)  
 STA. 34+75 TO STA. 36+35.83

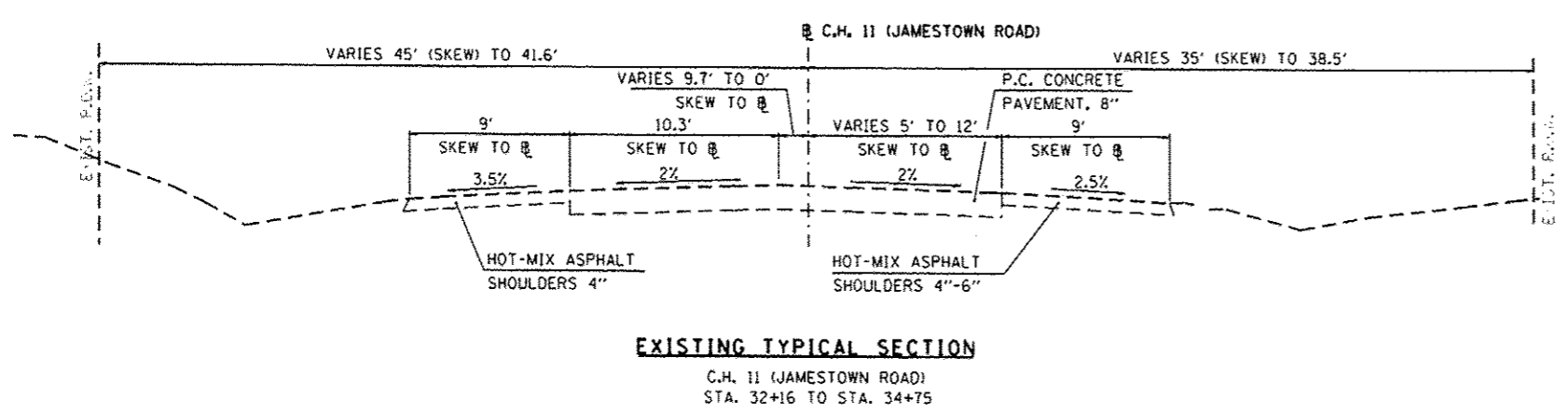


**EXISTING TYPICAL SECTION**  
 COUNTY HIGHWAY 11 (JAMESTOWN ROAD)  
 STA. 34+75 TO STA. 36+35.83



**PROPOSED TYPICAL SECTION**  
 C.H. 11 (JAMESTOWN ROAD)  
 STA. 32+16 TO STA. 34+75

VARIES  
 \*\*\* \*\*  
 ADDIT. DITCH TREATMENT  
 BOTH LT. & RT.



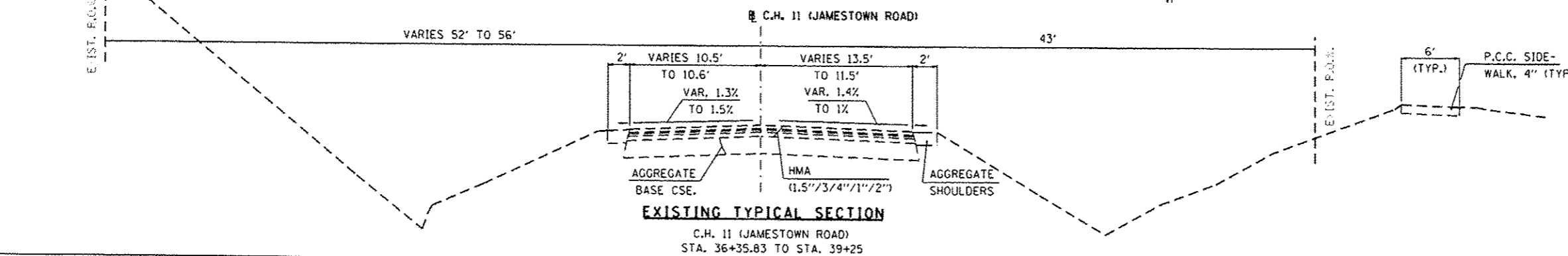
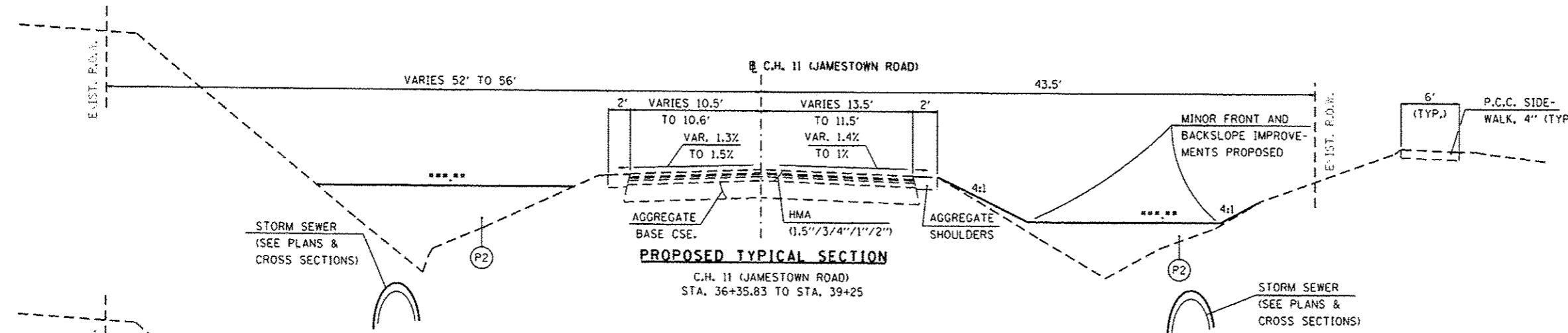
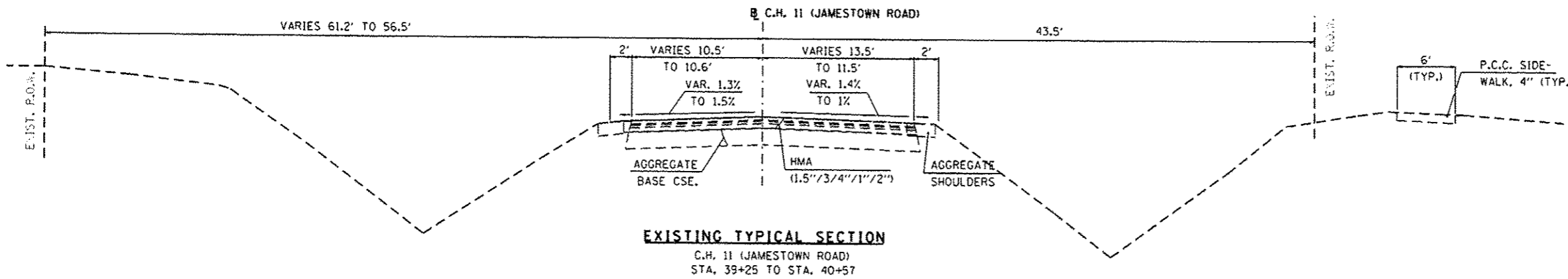
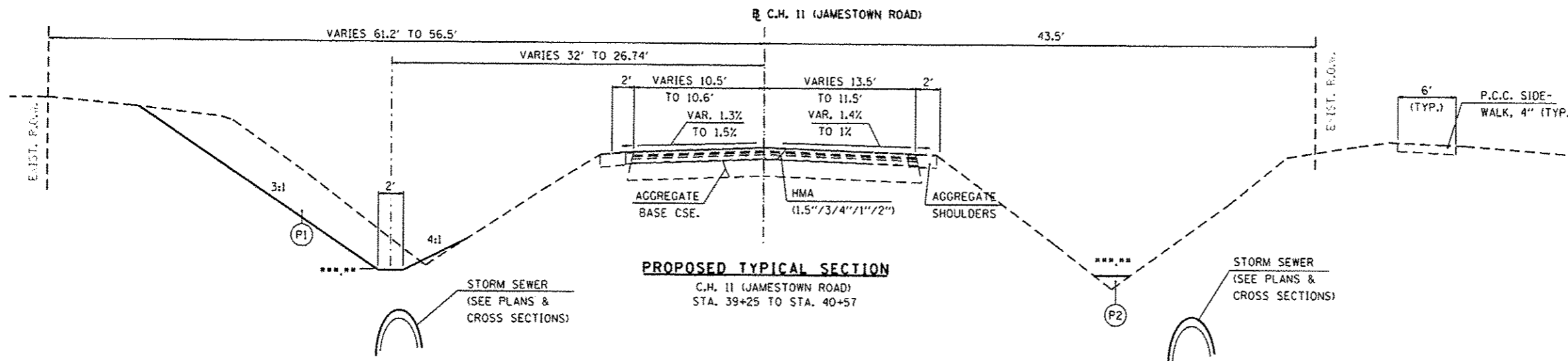
**EXISTING TYPICAL SECTION**  
 C.H. 11 (JAMESTOWN ROAD)  
 STA. 32+16 TO STA. 34+75

FILE NAME = 6382-7-typicalsections.dgn	USER NAME = cwillson	DESIGNED -	REVISED -	<b>STATE OF ILLINOIS DEPARTMENT OF TRANSPORTATION</b>	<b>TYPICAL SECTIONS</b>				F.A. RTE.	SECTION	COUNTY	TOTAL SHEETS	SHEET NO.
6382-7-typicalsections.dgn	6382-7-typicalsections.dgn	DRAWN -	REVISED -		784	09-00085-01-SS	CLINTON	24	4				
HMC JOB NO. 6382.007	PLOT SCALE = 20,000 1/4"	CHECKED -	REVISED -		SCALE: SHEET NO. OF SHEETS STA. TO STA.				CONTRACT NO. 97598				
	PLOT DATE = 4-9-2015	DATE -	REVISED -		ILLINOIS FED. AID PROJECT								

HMC ENGINEERS INC 1075 LAKE ROAD PO BOX 70 CARLYLE IL 62931 PHONE (618) 504-3711 WWW.HMCENGINEERS.COM

**LEGEND**

- (P1) EARTH EXCAVATION
- (P2) EMBANKMENT
- \*\*\* \*\* SEE PLANS AND CROSS SECTIONS FOR DITCH ELEVATIONS



FILE NAME: 6382-7-typicalsections2.dgn	USER NAME: caxton	DESIGNED: -	REVISED: -	<b>STATE OF ILLINOIS DEPARTMENT OF TRANSPORTATION</b>	<b>TYPICAL SECTIONS</b>			F.A. RTE.	SECTION	COUNTY	TOTAL SHEETS	SHEET NO.
M: 6382-7-typicalsections2.dgn	PLOT SCALE: 1" = 20.0000'	DRAWN: -	REVISED: -					784	09-00095-01-SS	CLINTON	24	5
HMG JOB NO. 6382.007	PLOT DATE: 1-3-2019	CHECKED: -	REVISED: -		SCALE:	SHEET NO. OF SHEETS	STA. TO STA.	CONTRACT NO. 97598				
		DATE: -	REVISED: -					ILLINOIS FED. AID PROJECT				

HMG ENGINEERS INC 1075 LAKE ROAD PO BOX 70 CARLYLE IL 62831 PHONE (618) 694-3711 WWW.HMGENGINEERS.COM

**STORM SEWER SCHEDULE**

LOCATION	STORM SEWER REMOVAL			MANHOLES TO BE RECON-STRUCTED	REMOVING INLETS	INLETS, TYPE A W/TYPE B GRATE	INLETS, TYPE B			REINFORCED CONCRETE PIPE TEES							
	12"	18"	24"				W/TYPE B GRATE	W/TYPE I FRAME, CLOSED LID	W/SPECIAL FRAME AND GRATE	24" PIPE W/12" RISER	36" PIPE W/12" RISER	36" PIPE W/15" RISER	36" PIPE W/18" RISER	36" PIPE W/24" RISER	REINF. CONC. PIPE TEE, SPECIAL (36" PIPE W/2-12" RISERS)		
STATION	FOOT	FOOT	FOOT	EACH	EACH	EACH	EACH	EACH	EACH	EACH	EACH	EACH	EACH	EACH	EACH		
<b>C.H. II (JAMESTOWN ROAD)</b>																	
JT-MHNR-5 TO JTN-TR-2	32+76.56 TO 33+21.29	RT.	3.0	-	44.0	1	1	1	1	-	-	-	1	-	-	-	
JTN-TR-2 TO JTN-JCTR-1	33+21.29 TO 35+25.00	RT.	-	-	150.2	-	-	-	-	2	-	2	-	2	-	-	
JTN-JCTR-1 TO JTN-MHNR-1	35+25.00 TO 36+30.00	RT.	-	-	-	-	-	-	-	-	1	-	-	1	-	-	
JTN-MHNR-1 TO JTN-TR-11	36+30.00 TO 37+40.00	RT.	15.6	48.0	-	-	-	2	3	-	-	-	-	3	-	-	
JTN-TR-11 TO JTN-MHNR-2	37+40.00 TO 38+46.00	RT.	-	-	-	-	-	1	1	-	-	-	-	1	-	-	
JTN-MHNR-2 TO JTN-FESR-1	38+46.00 TO 39+43.60	RT.	-	-	-	-	-	-	-	-	-	-	-	-	-	-	
JT-MHSL-2 TO JTN-TL-2	33+11.47 TO 33+67.47	LT.	10.5	-	56.0	1	2	-	1	2	-	-	-	-	-	2	
JTN-TL-2 TO JTN-MHNL-1	33+67.47 TO 34+70.93	LT.	9.4	-	115.0	-	1	-	-	-	-	-	-	2	-	-	
JTN-MHNL-1 TO JTN-MHNL-2	34+70.93 TO 37+69.42	LT.	-	-	34.0	-	-	-	2	-	1	2	1	-	-	-	
JTN-MHNL-2 TO JTN-MHNL-3	37+69.42 TO 38+46.00	LT.	-	-	-	-	-	-	-	-	-	-	-	-	-	-	
JTN-MHNL-3 TO JTN-FESL-1	38+46.00 TO 39+43.60	LT.	-	-	-	-	-	-	-	-	-	-	-	-	-	-	
<b>TOTALS</b>			<b>38.5</b>	<b>48.0</b>	<b>399.2</b>	<b>2</b>	<b>4</b>	<b>4</b>	<b>8</b>	<b>4</b>	<b>2</b>	<b>2</b>	<b>3</b>	<b>8</b>	<b>2</b>	<b>1</b>	<b>2</b>

CONTINUED

LOCATION	MANHOLES, TYPE A, 9'-DIAMETER			CONCRETE COLLAR	STORM SEWERS, CLASS A, TYPE 2					S.S., RUB. GASK., CL. B, TY. 2	PIPE DRAIN, 4"	PIPE DRAIN, 8"	PRC FLARED END SECTIONS 36"	TEMPORARY STORM SEWER PLUGS	DRAINAGE STRUCTURE RECON-STRUCTION (SPECIAL)	SELECT GRANULAR BACKFILL, SPECIAL	
	TYPE I FR. OPEN LID	WITH SPECIAL FRAME AND GRATE	CUBIC YARD		12"	15"	18"	24"	36"								36"
STATION	EACH	EACH	CUBIC YARD	FOOT		FOOT	FOOT	FOOT	FOOT	FOOT	FOOT	FOOT	EACH	EACH	EACH	CU YD	
<b>C.H. II (JAMESTOWN ROAD)</b>																	
JT-MHNR-5 TO JTN-TR-2	32+76.56 TO 33+21.29	RT.	-	-	-	1.5	-	-	44.0	44.0	-	-	-	-	-	62.8	
JTN-TR-2 TO JTN-JCTR-1	33+21.29 TO 35+25.00	RT.	-	-	-	11.6	-	-	185.3	173.3	-	-	-	2	1	177.8	
JTN-JCTR-1 TO JTN-MHNR-1	35+25.00 TO 36+30.00	RT.	-	-	-	-	1.5	-	93.0	-	-	-	-	-	-	-	
JTN-MHNR-1 TO JTN-TR-11	36+30.00 TO 37+40.00	RT.	1	-	0.25	7.0	6.5	-	106.0	-	2.0	-	-	-	-	96.9	
JTN-TR-11 TO JTN-MHNR-2	37+40.00 TO 38+46.00	RT.	-	-	-	3.5	7.3	-	79.5	-	-	-	-	-	-	1.3	
JTN-MHNR-2 TO JTN-FESR-1	38+46.00 TO 39+43.60	RT.	-	1	1.00	-	-	-	-	86.0	-	-	1	-	-	-	
JT-MHSL-2 TO JTN-TL-2	33+11.47 TO 33+67.47	LT.	-	-	0.25	14.9	-	-	56.0	-	3.7	-	-	1	-	73.4	
JTN-TL-2 TO JTN-MHNL-1	33+67.47 TO 34+70.93	LT.	-	-	-	-	-	4.0	71.1	-	-	-	-	2	-	88.9	
JTN-MHNL-1 TO JTN-MHNL-2	34+70.93 TO 37+69.42	LT.	-	1	-	12.5	1.5	-	272.4	-	-	-	-	-	-	65.1	
JTN-MHNL-2 TO JTN-MHNL-3	37+69.42 TO 38+46.00	LT.	-	1	-	-	-	-	70.0	-	-	-	-	-	-	-	
JTN-MHNL-3 TO JTN-FESL-1	38+46.00 TO 39+43.60	LT.	-	1	1.00	-	-	-	-	86.0	-	-	1	-	-	-	
<b>TOTALS</b>			<b>1</b>	<b>4</b>	<b>2.5</b>	<b>51.0</b>	<b>16.8</b>	<b>4.0</b>	<b>229.3</b>	<b>965.3</b>	<b>172.0</b>	<b>3.7</b>	<b>2.0</b>	<b>2</b>	<b>5</b>	<b>1</b>	<b>566.2</b>

CONTINUED

FILE NAME: 6382-7-ssschedule.dgn

USER NAME: c:\sison

DESIGNED: -

REVISED: -

PLT 6382-7-ssschedule.dgn

SCALE: 1"=20.0000'

DRAWN: -

REVISED: -

HMG JOB NO. 6382.007

DATE: 1/3/2015

CHECKED: -

REVISED: -

DATE: -

REVISED: -

**STATE OF ILLINOIS  
DEPARTMENT OF TRANSPORTATION**

**STORM SEWER SCHEDULE**

SCALE: SHEET NO. OF SHEETS STA. TO STA.

F.A. RTE.	SECTION	COUNTY	TOTAL SHEETS	SHEET NO.
784	09-00095-01-SS	CLINTON	24	6
CONTRACT NO. 97598			ILLINOIS FED. AID PROJECT	

HMG ENGINEERS INC 10751 AKE ROAD PO BOX 70 CARIYI IL 62231 PHONE (618) 694-3711 WWW.HMGENGINEERS.COM

**EARTHWORK SCHEDULE**

LOCATION	1	2*	3	4	5	6	7	8*
	EARTH EXCAVATION MATERIAL INCL. S.S. WORK CU. YD.	EARTH EXCAVATION (PAY ITEM) CU. YD.	EARTH EXCAV. x SHRINKAGE FACTOR CU. YD.	EMBANKMENT INCLUDING S.S. WORK CU. YD.	EMBANKMENT NOT INCL. S.S. WORK	BALANCE (+) WASTE (-) BORROW W/S.S. WORK CU. YD.	BALANCE (+) WASTE (-) BORROW CU. YD.	FURNISHED EXCAVATION CU. YD.
<b>STORM SEWER EXCAVATION</b>								
LT. 32+16 - 39+43.60	590.0	0	442.50	0	0	442.50	NA	NA
RT. 32+16 - 39+43.60	767.0	0	575.25	0	0	575.25	NA	NA
<b>STORM SEWER EARTH BACKFILL</b>								
LT. 32+16 - 39+43.60	0.0	0	0	189.0	0	-189.00	NA	NA
RT. 32+16 - 39+43.60	0.0	0	0	95.0	0	-95.00	NA	NA
<b>DITCHWORK</b>								
LT. 32+16 - 40+00	108.0	108.0	81.00	197.0	197.0	-116.00	-116.0	116.0
RT. 32+16 - 40+57	15.0	15.0	11.25	509.0	509.0	-497.75	-497.8	497.8
<b>TOTALS:</b>	<b>1,480.0</b>	<b>123.0</b>	<b>1,110.00</b>	<b>990.0</b>	<b>706.0</b>	<b>120.00</b>	<b>-613.8</b>	<b>613.8</b>

\*PAY ITEM. "NA" = NOT APPLICABLE

COLUMN 1: FROM CROSS SECTIONS. STORM SEWER EXCAVATION SHOULD BE INCLUDED IN THE UNIT PRICE FOR STORM SEWERS. EST. QUANTITIES OF USABLE EXCAVATION MATERIAL FROM STORM SEWER WORK IS INCLUDED FOR INFORMATION ONLY.  
 COLUMN 2: SAME AS COLUMN 4 WITH STORM SEWER QUANTITIES REMOVED.  
 COLUMN 3: COLUMN 1 x 0.75, TO ACCOUNT FOR LOSS OF MOISTURE.  
 COLUMN 4: FROM CROSS SECTIONS. STORM SEWER EMBANKMENT EQUATES TO EARTH BACKFILL FOR S.S. WORK AND IS INCLUDED FOR INFORMATION ONLY.  
 COLUMN 5: SAME AS COLUMN 7 WITH STORM SEWER QUANTITIES REMOVED.  
 COLUMN 6: COLUMN 3 - COLUMN 4. NOTE, AS INFORMATION ONLY, THAT NO OFFSITE MATERIAL SHOULD BE REQUIRED WITH USE OF EXCAVATED MATERIAL FROM S.S. WORK.  
 COLUMN 7: COLUMN 3 - COLUMN 5 FOR DITCHWORK ONLY, NOT INCLUDING S.S. WORK.  
 COLUMN 8: EQUATES TO COLUMN 7 AND IS A PAY ITEM.

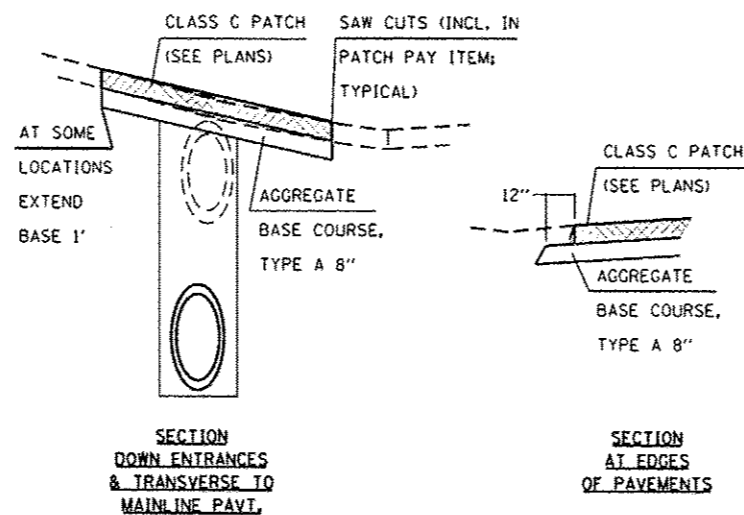
**EROSION CONTROL SCHEDULE**

LOCATION	TEMPORARY					PERMANENT						
	TEMPORARY EROSION CONTROL SEEDING	MULCH METHOD 2	HEAVY DUTY EROSION CONTROL BLANKET	INLET AND PIPE PROTECTION	TEMPORARY DITCH CHECKS	SEEDING, CLASS 2A	NITROGEN FERTILIZER NUTRIENT	PHOSPHORUS FERTILIZER NUTRIENT	POTASSIUM FERTILIZER NUTRIENT	AGRICULTURAL GROUND LIMESTONE	FILTER FABRIC	STONE DUMPED RIPRAP, CLASS A3
STATION	POUND	ACRE	SQ. YD.	EACH	EACH*	ACRE	POUND	POUND	POUND	TON	SQ. YD.	SQ. YD.
<b>C.H. 11 (JAMESTOWN ROAD)</b>												
32+49.40 TO 33+81.70 LT.	5.8	0.034	117.0	5	2	0.058	5.2	5.2	5.2	0.1	-	-
34+53.94 TO 37+18.75 LT.	20.9	0.085	600.0	4	4	0.209	18.8	18.8	18.8	0.4	-	-
37+18.75 TO 40+25.00 LT.	24.8	0.094	744.0	3	3	0.248	22.3	22.3	22.3	0.5	27.5	27.5
32+16.33 TO 36+76.11 RT.	18.6	0.021	799.0	11	6	0.186	16.7	16.7	16.7	0.4	-	-
36+76.11 TO 40+25.00 RT.	24.6	0.000	1,193.0	7	4	0.246	22.2	22.2	22.2	0.5	27.5	27.5
<b>TOTALS</b>	<b>94.7</b>	<b>0.234</b>	<b>3,453.0</b>	<b>30</b>	<b>19</b>	<b>0.947</b>	<b>85.3</b>	<b>85.3</b>	<b>85.3</b>	<b>1.9</b>	<b>55.0</b>	<b>55.0</b>
<b>TOTALS (ROUNDED)</b>	<b>94.7</b>	<b>0.23</b>	<b>3,453.0</b>	<b>30</b>	<b>19</b>	<b>0.95</b>	<b>85</b>	<b>85</b>	<b>85</b>	<b>1.9</b>	<b>55.0</b>	<b>55.0</b>

\* = NOT A PAY ITEM. SHOWING THE NUMBER OF LOCATIONS AS INFO. TO THE CONTRACTOR. PAY ITEM UNIT = FOOT. TOTAL QUANTITY = 19 x 16 = 304 FOOT

**PATCHING SCHEDULE**

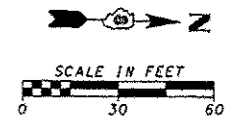
LOCATION	AGGREGATE BASE COURSE, TYPE A 8"	CLASS C PATCHES		
		TYPE II, 8"	TYPE IV, 8"	TYPE IV, 7" SPECIAL
STATION	SQ. YD.	SQ. YD.	SQ. YD.	SQ. YD.
<b>C.H. 11 (JAMESTOWN ROAD)</b>				
33+61.59 TO 33+70.00 LT.	6.5	5.6	0.0	0.0
33+78.35 TO 34+7.47 LT.	99.7	0.0	0.0	95.6
37+19.08 TO 37+32.59 LT.	14.1	12.0	0.0	0.0
33+69.82 TO 33+77.70 RT.	6.5	5.6	0.0	0.0
34+85.86 TO 34+93.73 RT.	6.5	5.6	0.0	0.0
36+57.87 TO 36+94.01 RT.	35.5	0.0	33.3	0.0
<b>TOTALS</b>	<b>168.8</b>	<b>28.8</b>	<b>33.3</b>	<b>95.6</b>



**PATCHING DETAILS**

HMC ENGINEERS INC. 10751 AKE ROAD PO BOX 70 CARLYLE IL 62931 PHONE (618) 594-3711 WWW.HMCENGINEERS.COM



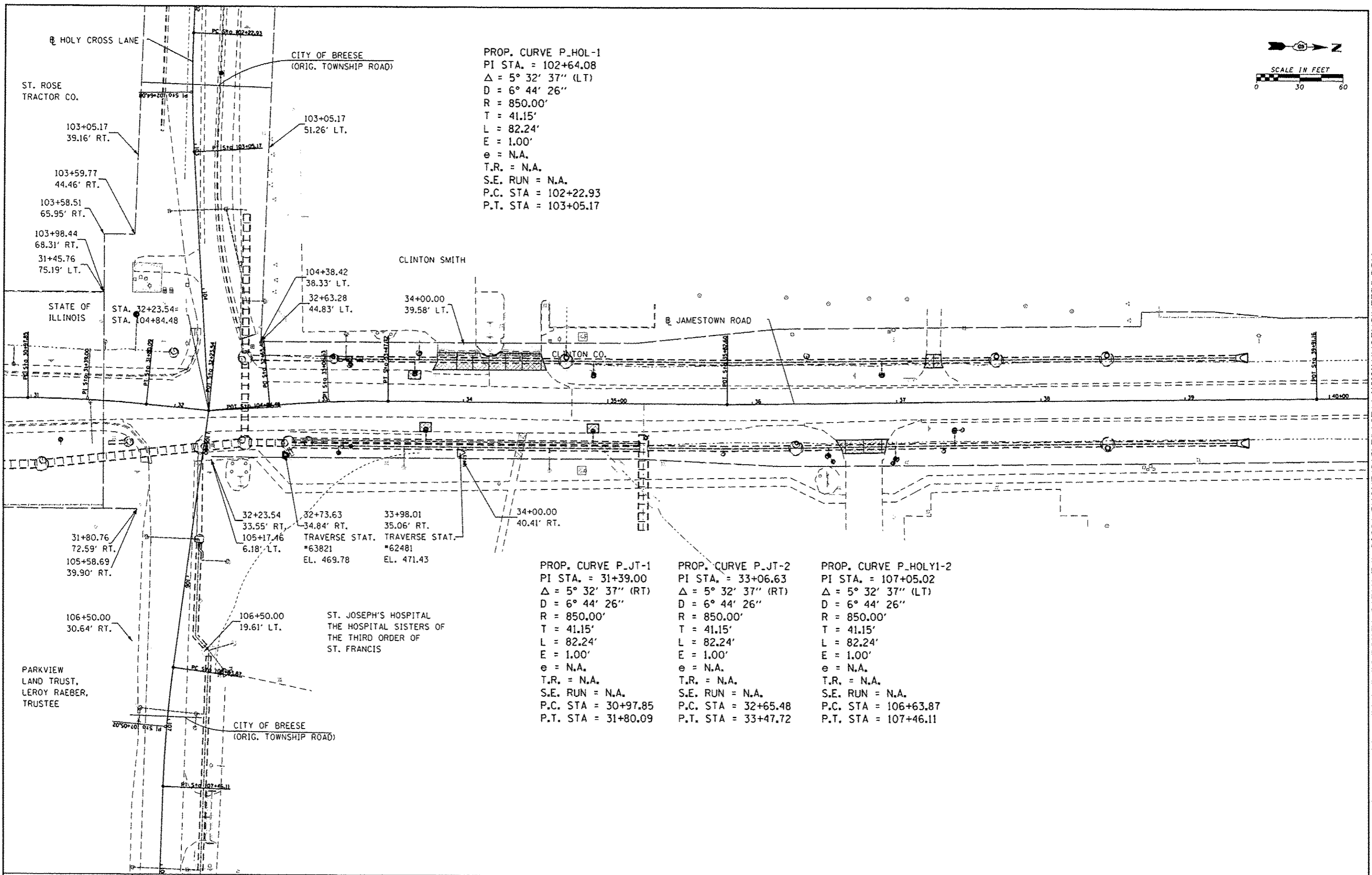


PROP. CURVE P\_HOL-1  
 PI STA. = 102+64.08  
 $\Delta = 5^\circ 32' 37''$  (LT)  
 $D = 6^\circ 44' 26''$   
 $R = 850.00'$   
 $T = 41.15'$   
 $L = 82.24'$   
 $E = 1.00'$   
 $e = \text{N.A.}$   
 $T.R. = \text{N.A.}$   
 $S.E. \text{ RUN} = \text{N.A.}$   
 P.C. STA = 102+22.93  
 P.T. STA = 103+05.17

PROP. CURVE P\_JT-1  
 PI STA. = 31+39.00  
 $\Delta = 5^\circ 32' 37''$  (RT)  
 $D = 6^\circ 44' 26''$   
 $R = 850.00'$   
 $T = 41.15'$   
 $L = 82.24'$   
 $E = 1.00'$   
 $e = \text{N.A.}$   
 $T.R. = \text{N.A.}$   
 $S.E. \text{ RUN} = \text{N.A.}$   
 P.C. STA = 30+97.85  
 P.T. STA = 31+80.09

PROP. CURVE P\_JT-2  
 PI STA. = 33+06.63  
 $\Delta = 5^\circ 32' 37''$  (RT)  
 $D = 6^\circ 44' 26''$   
 $R = 850.00'$   
 $T = 41.15'$   
 $L = 82.24'$   
 $E = 1.00'$   
 $e = \text{N.A.}$   
 $T.R. = \text{N.A.}$   
 $S.E. \text{ RUN} = \text{N.A.}$   
 P.C. STA = 32+65.48  
 P.T. STA = 33+47.72

PROP. CURVE P\_HOLY1-2  
 PI STA. = 107+05.02  
 $\Delta = 5^\circ 32' 37''$  (LT)  
 $D = 6^\circ 44' 26''$   
 $R = 850.00'$   
 $T = 41.15'$   
 $L = 82.24'$   
 $E = 1.00'$   
 $e = \text{N.A.}$   
 $T.R. = \text{N.A.}$   
 $S.E. \text{ RUN} = \text{N.A.}$   
 P.C. STA = 106+63.87  
 P.T. STA = 107+46.11



FILE NAME: 6382-Transp\alignments\...  
 HMG JOB NO. 6382.007

DESIGNED -  
 DRAWN -  
 CHECKED -  
 DATE -

REVISED -  
 REVISED -  
 REVISED -  
 REVISED -

STATE OF ILLINOIS  
 DEPARTMENT OF TRANSPORTATION

F.A. RTE.	SECTION	COUNTY	TOTAL SHEETS	SHEET NO.
784	09-00095-01-55	CLINTON	24	9

SCALE: SHEET NO. OF SHEETS STA. TO STA.

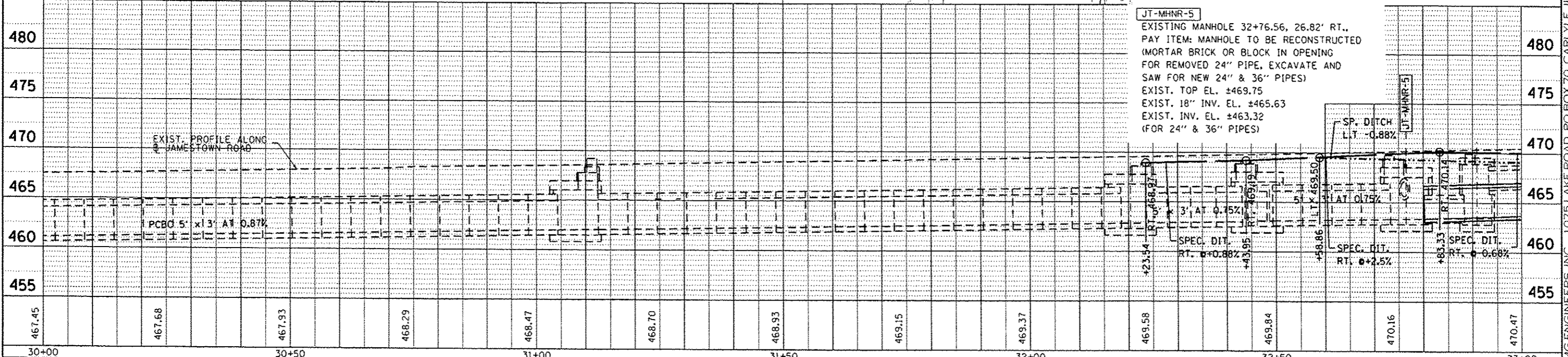
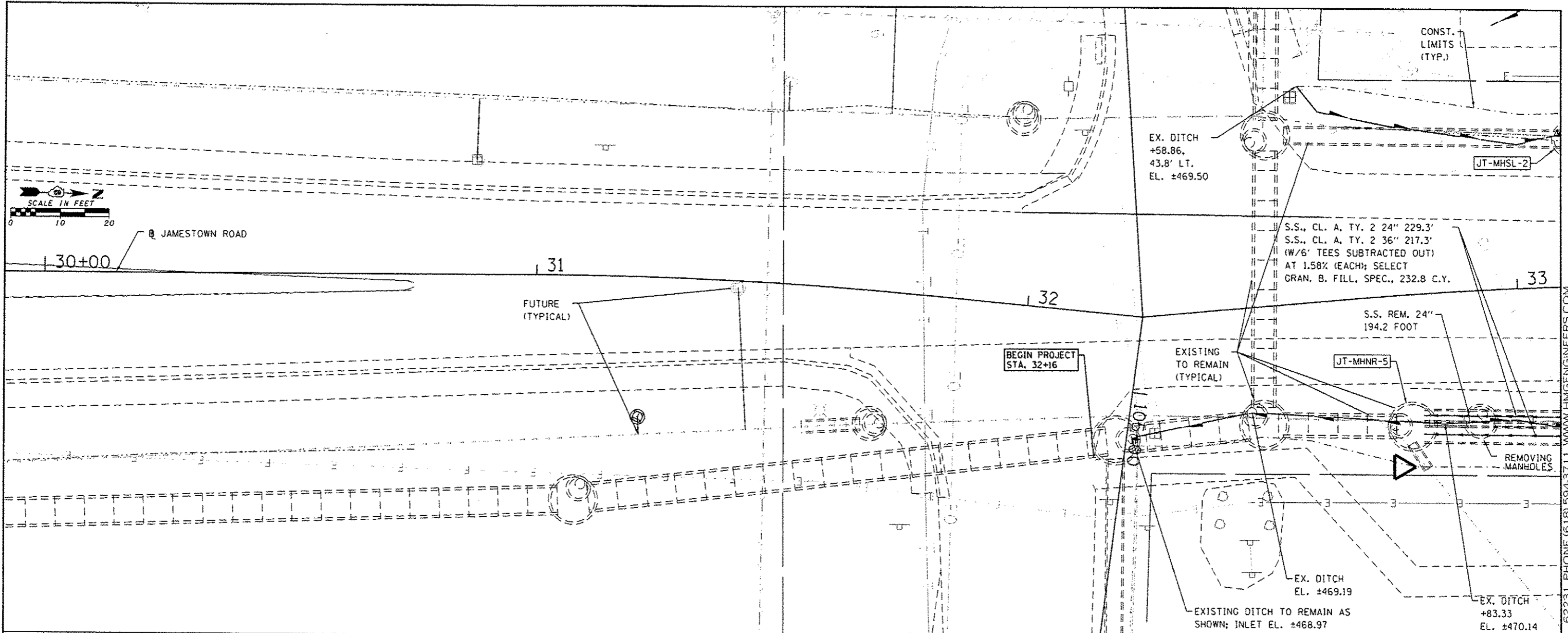
CONTRACT NO.
97598

ILLINOIS FED. AID PROJECT

HMG ENGINEERS, INC. 10751 LAKE ROAD, PO BOX 70, CARLYLE, IL 62931, PHONE (618) 694-3711, WWW.HMGENGINEERS.COM

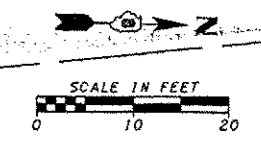
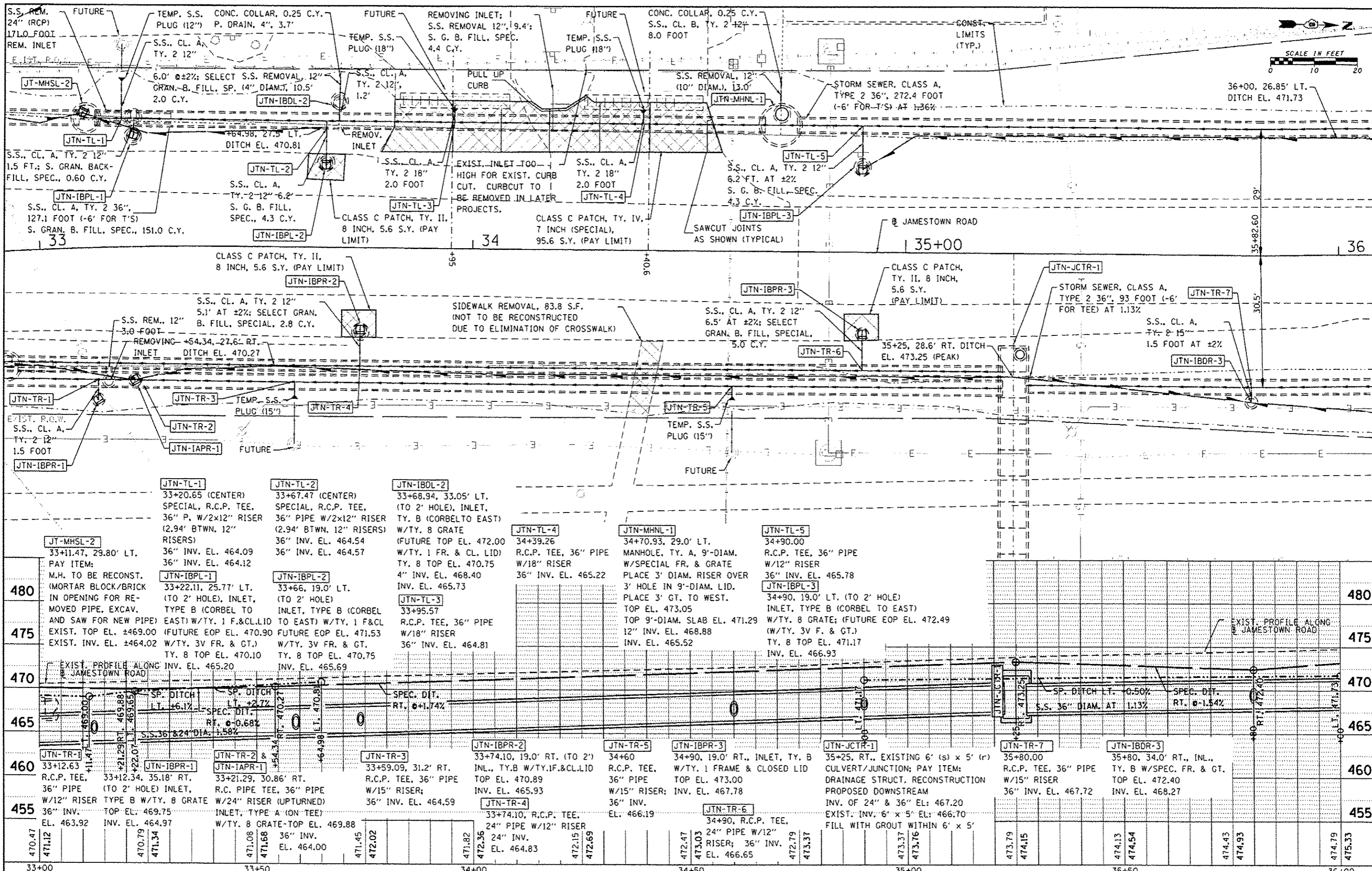
DATE	
SCALE	
PL-111	
NOTE BOX	
NO.	

DATE	
SCALE	
PROFILE	
NO.	



FILE NAME: 6382-7-jtownpp3.dgn	USER NAME: jcollins	DESIGNED: CRW	REVISED: -	<b>STATE OF ILLINOIS</b> <b>DEPARTMENT OF TRANSPORTATION</b>	<b>STORM SEWERS AND REMOVALS</b> <b>JAMESTOWN ROAD</b>	F.A. RTE. 784	SECTION 09-00095-01-SS	COUNTY CLINTON	TOTAL SHEETS 24	SHEET NO. 10	
HMC JOB NO. 6382.007	PLT SCALE: 1"=50.0000'	CHECKED: CRW	REVISED: -			SCALE:	SHEET NO. OF SHEETS	STA. TO STA.	CONTRACT NO. 97598		
	PLT DATE: 4-3-2015	DATE: -	REVISED: -			ILLINOIS FED. AID PROJECT					

HMG ENGINEERS, INC. 1075 LAKE ROAD, PO BOX 70, CARLYLE, IL 62231 PHONE (618) 594-3711 WWW.HMGENGINEERS.COM

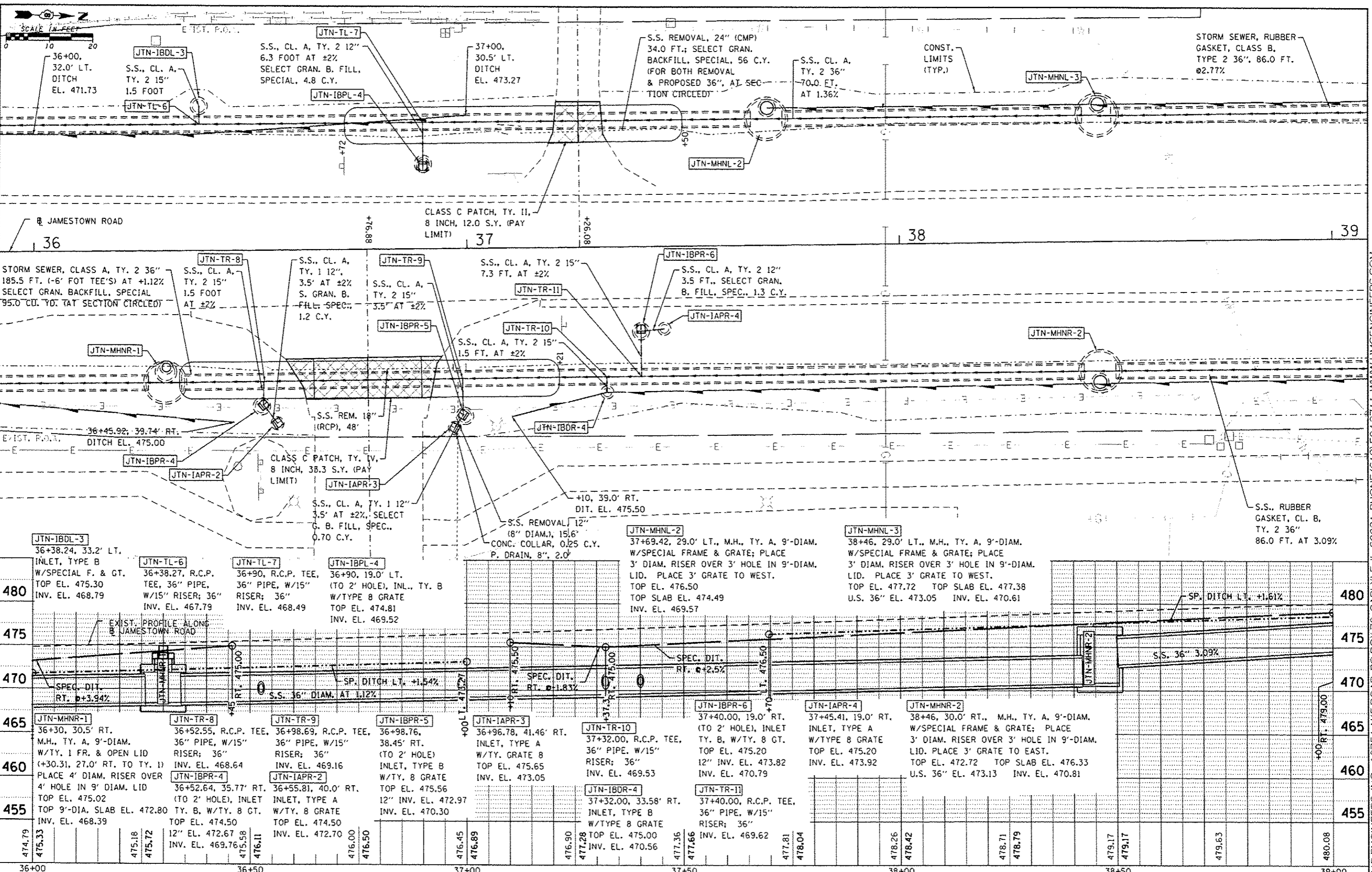


DATE	
BY	
NO.	
REVISION	
DATE	
BY	
NO.	

DATE	
BY	
NO.	
REVISION	
DATE	
BY	
NO.	

480	JTN-MHSL-2 33+11.47, 29.80' LT. PAY ITEM: M.H. TO BE RECONST. (MORTAR BLOCK/BRICK IN OPENING FOR RE- MOVED PIPE. EXCAV. AND SAW FOR NEW PIPE) EXIST. TOP EL. ±469.00 EXIST. INV. EL. ±464.02	JTN-IBPL-1 33+22.11, 25.77' LT. (TO 2' HOLE), INLET, TYPE B (CORBEL TO EAST) W/TY. 1 F&CL LID EXIST. TOP EL. ±470.90 EXIST. INV. EL. ±464.02	JTN-IBPL-2 33+66, 19.0' LT. (TO 2' HOLE) INLET, TYPE B (CORBEL TO EAST) W/TY. 1 F&CL EXIST. TOP EL. ±470.90 EXIST. INV. EL. ±464.02	JTN-IBOL-2 33+68.94, 33.05' LT. (TO 2' HOLE), INLET, TY. B (CORBEL TO EAST) W/TY. 8 GRATE (FUTURE TOP EL. 472.00 W/TY. 1 FR. & CL. LID) TY. 8 TOP EL. 470.75 4" INV. EL. 468.40 INV. EL. 465.73	JTN-TL-4 34+39.26 R.C.P. TEE, 36" PIPE W/18" RISER 36" INV. EL. 465.22	JTN-MHNL-1 34+70.93, 29.0' LT. MANHOLE, TY. A, 9'-DIAM. W/SPECIAL FR. & GRATE PLACE 3' DIAM. RISER OVER 3' HOLE IN 9'-DIAM. LID. PLACE 3' GT. TO WEST. TOP EL. 473.05 TOP 9'-DIAM. SLAB EL. 471.29 12" INV. EL. 468.88 INV. EL. 465.52	JTN-TL-5 34+90.00 R.C.P. TEE, 36" PIPE W/12" RISER 36" INV. EL. 465.78	JTN-IBPL-3 34+90, 19.0' LT. (TO 2' HOLE) INLET, TYPE B (CORBEL TO EAST) W/TY. 8 GRATE; (FUTURE EOP EL. 472.49 (W/TY. 3V F. & GT.) TY. 8 TOP EL. 471.17 INV. EL. 466.93	JTN-TR-1 33+12.63 R.C.P. TEE, 36" PIPE W/12" RISER TYPE B W/TY. 8 GRATE 36" INV. TOP EL. 469.75 EL. 463.92	JTN-IBPR-1 33+12.34, 35.18' RT. (TO 2' HOLE) INLET, R.C. PIPE TEE, 36" PIPE W/12" RISER TYPE B W/TY. 8 GRATE INLET, TY. A (ON TEE) W/TY. 8 GRATE-TOP EL. 469.88 36" INV. EL. 464.97	JTN-TR-2 33+21.29, 30.86' RT. R.C. PIPE TEE, 36" PIPE W/15" RISER; 36" INV. EL. 464.59	JTN-TR-3 33+59.09, 31.2' RT. R.C.P. TEE, 36" PIPE W/15" RISER; 36" INV. EL. 464.59	JTN-TR-4 33+74.10, 19.0' RT. (TO 2') INL., TY. B W/TY. 1 F&CL LID TOP EL. 470.89 INV. EL. 465.93	JTN-TR-5 34+60 R.C.P. TEE, 36" PIPE W/15" RISER; 36" INV. EL. 467.78	JTN-IBPR-3 34+90, 19.0' RT., INLET, TY. B W/TY. 1 FRAME & CLOSED LID TOP EL. 473.00 INV. EL. 467.78	JTN-JCTR-1 35+25, RT., EXISTING 6' (s) x 5' (r) CULVERT/JUNCTION; PAY ITEM: DRAINAGE STRUCT. RECONSTRUCTION PROPOSED DOWNSTREAM INV. OF 24" & 36" EL: 467.20 EXIST. INV. 6' x 5' EL: 466.70 FILL WITH GROUT WITHIN 6' x 5'	JTN-TR-7 35+80.00 R.C.P. TEE, 36" PIPE W/15" RISER 36" INV. EL. 467.72	JTN-IBDR-3 35+80, 34.0' RT., INL., TY. B W/SPEC. FR. & GT. TOP EL. 472.40 INV. EL. 468.27
-----	---	--	---	--	--	--	--	--	--	--	--	--	--	---	---	---	--	---

HMG ENGINEERS, INC., 1075 LAKE ROAD, PO BOX 70, CARLYLE, IL 62231 PHONE (618) 594-3711 WWW.HMGENGINEERS.COM



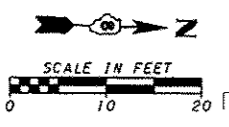
DATE	
SCALE	
PLANT	
NOTE BOOK	
NO.	

DATE	
SCALE	
PLANT	
NOTE BOOK	
NO.	

480	JTN-IBDL-3 36+38.24, 33.2' LT. INLET, TYPE B W/SPECIAL F. & GT. TOP EL. 475.30 INV. EL. 468.79	JTN-TL-6 36+38.27, R.C.P. TEE, 36" PIPE, W/15" RISER; 36" INV. EL. 467.79	JTN-TL-7 36+90, R.C.P. TEE, 36" PIPE, W/15" RISER; 36" INV. EL. 468.49	JTN-IBPL-4 36+90, 19.0' LT. (TO 2' HOLE), INL., TY. B W/TYPE 8 GRATE TOP EL. 474.81 INV. EL. 469.52	JTN-MHNL-2 37+69.42, 29.0' LT., M.H., TY. A, 9'-DIAM. W/SPECIAL FRAME & GRATE; PLACE 3' DIAM. RISER OVER 3' HOLE IN 9'-DIAM. LID. PLACE 3' GRATE TO WEST. TOP EL. 476.50 TOP SLAB EL. 474.49 INV. EL. 469.57	JTN-MHNL-3 38+46, 29.0' LT., M.H., TY. A, 9'-DIAM. W/SPECIAL FRAME & GRATE; PLACE 3' DIAM. RISER OVER 3' HOLE IN 9'-DIAM. LID. PLACE 3' GRATE TO WEST. TOP EL. 477.72 TOP SLAB EL. 477.38 U.S. 36" EL. 473.05 INV. EL. 470.61	480			
475	JTN-MHNR-1 36+30, 30.5' RT. M.H., TY. A, 9'-DIAM. W/TY. 1 FR. & OPEN LID (+30.31, 27.0' RT. TO TY. 1) PLACE 4' DIAM. RISER OVER 4' HOLE IN 9' DIAM. LID TOP EL. 475.02 TOP 9'-DIA. SLAB EL. 472.80 INV. EL. 468.39	JTN-TR-8 36+52.55, R.C.P. TEE, 36" PIPE, W/15" RISER; 36" INV. EL. 468.64	JTN-TR-9 36+98.69, R.C.P. TEE, 36" PIPE, W/15" RISER; 36" INV. EL. 469.16	JTN-IBPR-5 36+98.76, 38.45' RT. (TO 2' HOLE) INLET, TYPE B W/TY. 8 GRATE TOP EL. 475.56 INV. EL. 470.30	JTN-IAPR-3 36+96.78, 41.46' RT. INLET, TYPE A W/TY. GRATE 8 TOP EL. 475.65 INV. EL. 473.05	JTN-TR-10 37+32.00, R.C.P. TEE, 36" PIPE, W/15" RISER; 36" INV. EL. 469.53	JTN-IBDR-4 37+32.00, 33.58' RT. INLET, TYPE B W/TYPE 8 GRATE TOP EL. 475.00 INV. EL. 470.56	JTN-TR-11 37+40.00, R.C.P. TEE, 36" PIPE, W/15" RISER; 36" INV. EL. 469.62	JTN-MHNR-2 38+46, 30.0' RT., M.H., TY. A, 9'-DIAM. W/SPECIAL FRAME & GRATE; PLACE 3' DIAM. RISER OVER 3' HOLE IN 9'-DIAM. LID. PLACE 3' GRATE TO EAST. TOP EL. 472.72 TOP SLAB EL. 476.33 U.S. 36" EL. 473.13 INV. EL. 470.81	475
470	JTN-IBPR-4 36+45.92, 39.74' RT. DITCH EL. 475.00	JTN-IAPR-2 36+52.64, 35.77' RT. (TO 2' HOLE), INLET TY. B, W/TY. 8 CT. TOP EL. 474.50 INV. EL. 469.76	JTN-IAPR-3 36+55.81, 40.0' RT. INLET, TYPE A W/TY. 8 GRATE TOP EL. 474.50 INV. EL. 472.70	JTN-IAPR-4 37+40.00, 19.0' RT. (TO 2' HOLE), INLET TY. B, W/TY. 8 GT. TOP EL. 475.20 INV. EL. 470.79	JTN-MHNR-2 38+46, 30.0' RT., M.H., TY. A, 9'-DIAM. W/SPECIAL FRAME & GRATE; PLACE 3' DIAM. RISER OVER 3' HOLE IN 9'-DIAM. LID. PLACE 3' GRATE TO WEST. TOP EL. 477.72 TOP SLAB EL. 477.38 U.S. 36" EL. 473.05 INV. EL. 470.61	JTN-MHNR-2 38+46, 30.0' RT., M.H., TY. A, 9'-DIAM. W/SPECIAL FRAME & GRATE; PLACE 3' DIAM. RISER OVER 3' HOLE IN 9'-DIAM. LID. PLACE 3' GRATE TO WEST. TOP EL. 477.72 TOP SLAB EL. 477.38 U.S. 36" EL. 473.05 INV. EL. 470.61	470			
465	JTN-MHNR-1 36+30, 30.5' RT. M.H., TY. A, 9'-DIAM. W/TY. 1 FR. & OPEN LID (+30.31, 27.0' RT. TO TY. 1) PLACE 4' DIAM. RISER OVER 4' HOLE IN 9' DIAM. LID TOP EL. 475.02 TOP 9'-DIA. SLAB EL. 472.80 INV. EL. 468.39	JTN-TR-8 36+52.55, R.C.P. TEE, 36" PIPE, W/15" RISER; 36" INV. EL. 468.64	JTN-TR-9 36+98.69, R.C.P. TEE, 36" PIPE, W/15" RISER; 36" INV. EL. 469.16	JTN-IBPR-5 36+98.76, 38.45' RT. (TO 2' HOLE) INLET, TYPE B W/TY. 8 GRATE TOP EL. 475.56 INV. EL. 470.30	JTN-IAPR-3 36+96.78, 41.46' RT. INLET, TYPE A W/TY. GRATE 8 TOP EL. 475.65 INV. EL. 473.05	JTN-TR-10 37+32.00, R.C.P. TEE, 36" PIPE, W/15" RISER; 36" INV. EL. 469.53	JTN-IBDR-4 37+32.00, 33.58' RT. INLET, TYPE B W/TYPE 8 GRATE TOP EL. 475.00 INV. EL. 470.56	JTN-TR-11 37+40.00, R.C.P. TEE, 36" PIPE, W/15" RISER; 36" INV. EL. 469.62	JTN-MHNR-2 38+46, 30.0' RT., M.H., TY. A, 9'-DIAM. W/SPECIAL FRAME & GRATE; PLACE 3' DIAM. RISER OVER 3' HOLE IN 9'-DIAM. LID. PLACE 3' GRATE TO EAST. TOP EL. 472.72 TOP SLAB EL. 476.33 U.S. 36" EL. 473.13 INV. EL. 470.81	465
460	JTN-MHNR-1 36+30, 30.5' RT. M.H., TY. A, 9'-DIAM. W/TY. 1 FR. & OPEN LID (+30.31, 27.0' RT. TO TY. 1) PLACE 4' DIAM. RISER OVER 4' HOLE IN 9' DIAM. LID TOP EL. 475.02 TOP 9'-DIA. SLAB EL. 472.80 INV. EL. 468.39	JTN-TR-8 36+52.55, R.C.P. TEE, 36" PIPE, W/15" RISER; 36" INV. EL. 468.64	JTN-TR-9 36+98.69, R.C.P. TEE, 36" PIPE, W/15" RISER; 36" INV. EL. 469.16	JTN-IBPR-5 36+98.76, 38.45' RT. (TO 2' HOLE) INLET, TYPE B W/TY. 8 GRATE TOP EL. 475.56 INV. EL. 470.30	JTN-IAPR-3 36+96.78, 41.46' RT. INLET, TYPE A W/TY. GRATE 8 TOP EL. 475.65 INV. EL. 473.05	JTN-TR-10 37+32.00, R.C.P. TEE, 36" PIPE, W/15" RISER; 36" INV. EL. 469.53	JTN-IBDR-4 37+32.00, 33.58' RT. INLET, TYPE B W/TYPE 8 GRATE TOP EL. 475.00 INV. EL. 470.56	JTN-TR-11 37+40.00, R.C.P. TEE, 36" PIPE, W/15" RISER; 36" INV. EL. 469.62	JTN-MHNR-2 38+46, 30.0' RT., M.H., TY. A, 9'-DIAM. W/SPECIAL FRAME & GRATE; PLACE 3' DIAM. RISER OVER 3' HOLE IN 9'-DIAM. LID. PLACE 3' GRATE TO EAST. TOP EL. 472.72 TOP SLAB EL. 476.33 U.S. 36" EL. 473.13 INV. EL. 470.81	460
455	JTN-MHNR-1 36+30, 30.5' RT. M.H., TY. A, 9'-DIAM. W/TY. 1 FR. & OPEN LID (+30.31, 27.0' RT. TO TY. 1) PLACE 4' DIAM. RISER OVER 4' HOLE IN 9' DIAM. LID TOP EL. 475.02 TOP 9'-DIA. SLAB EL. 472.80 INV. EL. 468.39	JTN-TR-8 36+52.55, R.C.P. TEE, 36" PIPE, W/15" RISER; 36" INV. EL. 468.64	JTN-TR-9 36+98.69, R.C.P. TEE, 36" PIPE, W/15" RISER; 36" INV. EL. 469.16	JTN-IBPR-5 36+98.76, 38.45' RT. (TO 2' HOLE) INLET, TYPE B W/TY. 8 GRATE TOP EL. 475.56 INV. EL. 470.30	JTN-IAPR-3 36+96.78, 41.46' RT. INLET, TYPE A W/TY. GRATE 8 TOP EL. 475.65 INV. EL. 473.05	JTN-TR-10 37+32.00, R.C.P. TEE, 36" PIPE, W/15" RISER; 36" INV. EL. 469.53	JTN-IBDR-4 37+32.00, 33.58' RT. INLET, TYPE B W/TYPE 8 GRATE TOP EL. 475.00 INV. EL. 470.56	JTN-TR-11 37+40.00, R.C.P. TEE, 36" PIPE, W/15" RISER; 36" INV. EL. 469.62	JTN-MHNR-2 38+46, 30.0' RT., M.H., TY. A, 9'-DIAM. W/SPECIAL FRAME & GRATE; PLACE 3' DIAM. RISER OVER 3' HOLE IN 9'-DIAM. LID. PLACE 3' GRATE TO EAST. TOP EL. 472.72 TOP SLAB EL. 476.33 U.S. 36" EL. 473.13 INV. EL. 470.81	455

HMG ENGINEERS, INC., 1075 LAKE ROAD, PO BOX 70, CARLYLE, IL 62231 PHONE (618) 594-3711 WWW.HMGENGINEERS.COM

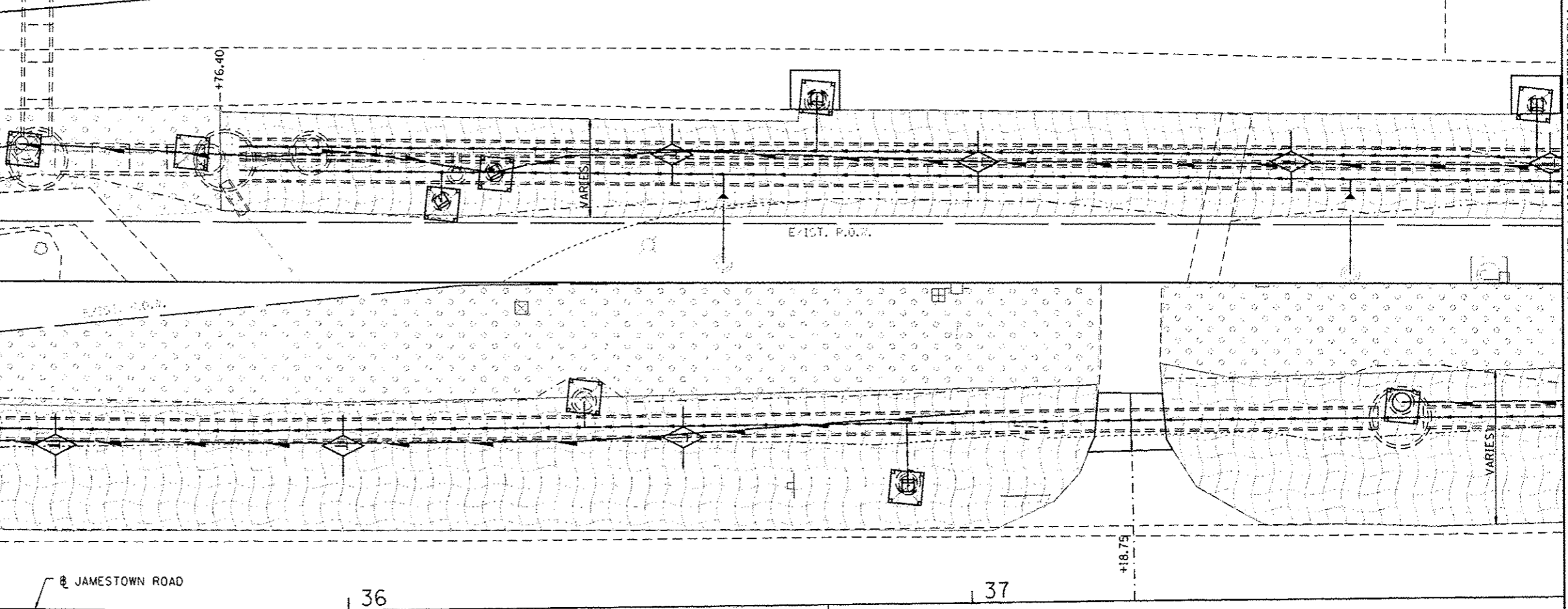
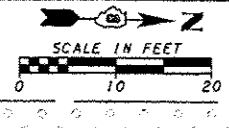
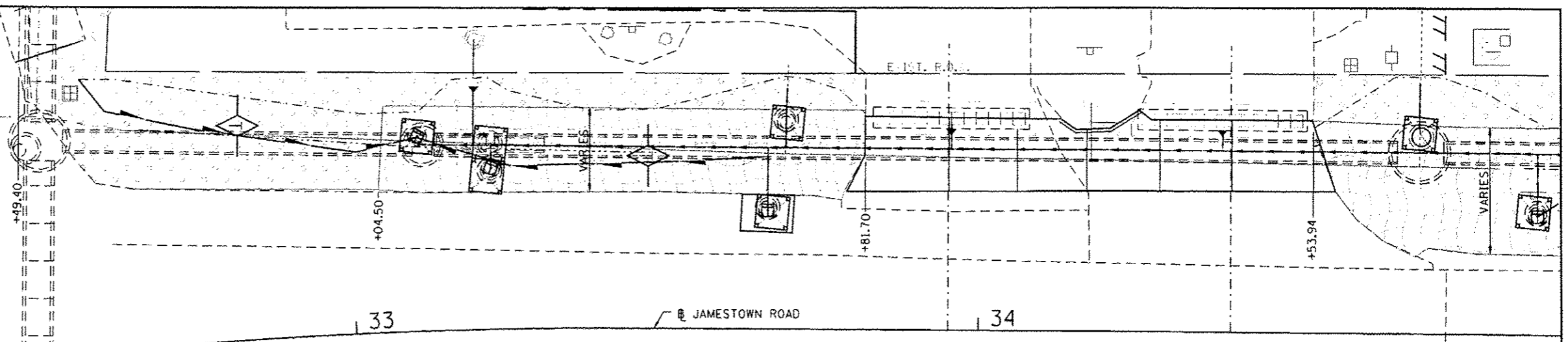




HOLY CROSS LANE

**LEGEND**

- INLET AND PIPE PROTECTION
- TEMPORARY DITCH CHECK
- STONE DUMPED RIPRAP
- SEEDING, CLASS 2A  
HEAVY DUTY EROSION CONTROL BLANKET
- SEEDING, CLASS 2A & MULCH, METHOD 2



FILE NAME = 6382-7-erosplan1.dwg	USER NAME = jason
Hi 6282 Broese Poundabout 6382Design 6382-7-erosplan1.dwg	
HMG JOB NO. 6382.007	
PLOT SCALE = 20,000	
PLOT DATE = 4/3/2015	

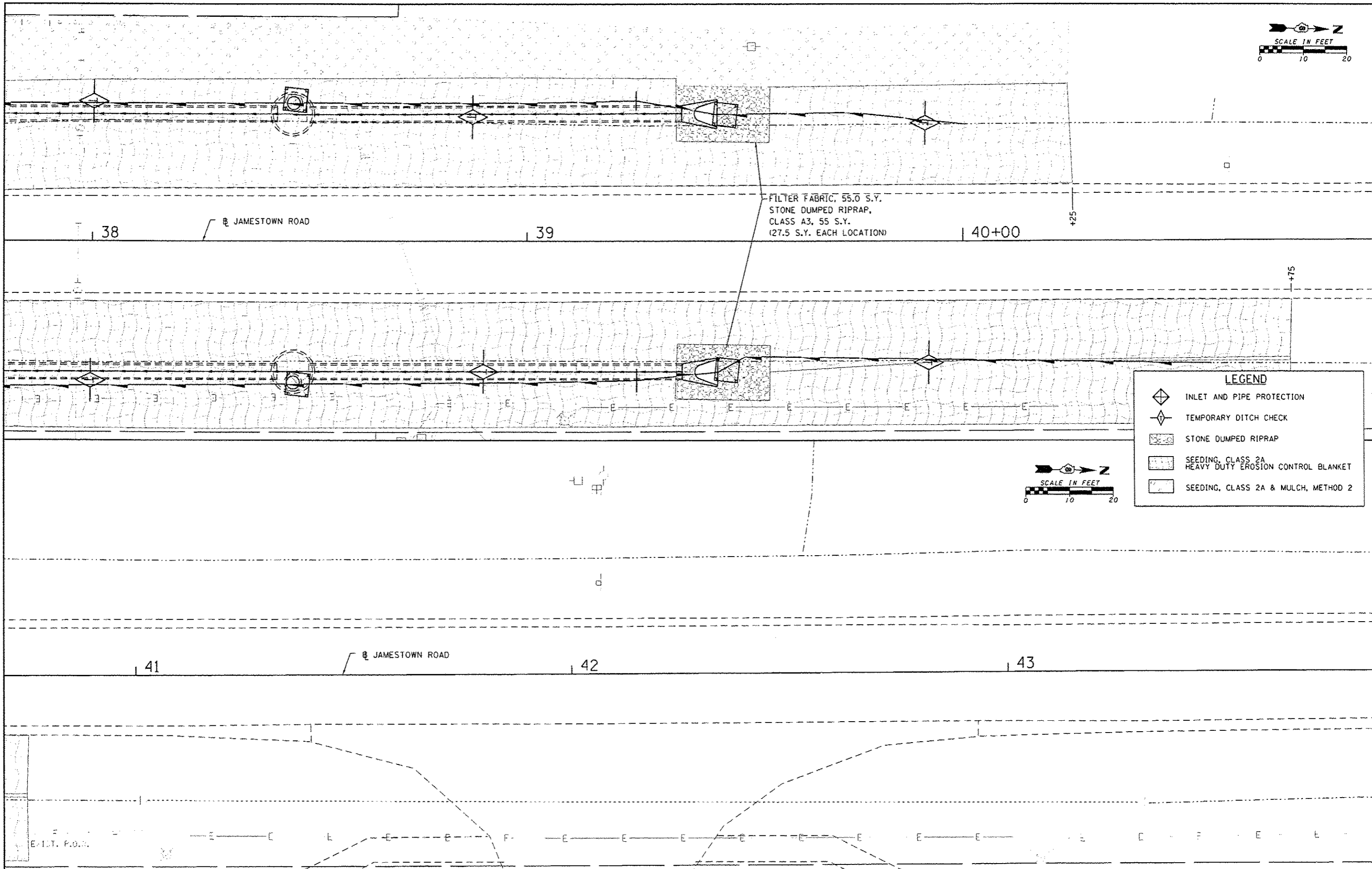
DESIGNED -	REVISED -
DRAWN -	REVISED -
CHECKED -	REVISED -
DATE -	REVISED -

**STATE OF ILLINOIS  
DEPARTMENT OF TRANSPORTATION**

<b>EROSION CONTROL</b>	
SCALE:	SHEET NO. OF SHEETS STA. TO STA.

F.A. RTE.	SECTION	COUNTY	TOTAL SHEETS	SHEET NO.
784	09-00095-01-55	CLINTON	24	14
CONTRACT NO. 9XXXX				
ILLINOIS FED. AID PROJECT				

HMG ENGINEERS, INC. 10751 AKE ROAD PO BOX 70 CARLYLE IL 62831 PHONE (618) 504-3711 WWW.HMGENGINERS.COM



LEGEND	
	INLET AND PIPE PROTECTION
	TEMPORARY DITCH CHECK
	STONE DUMPED RIPRAP
	SEEDING, CLASS 2A HEAVY DUTY EROSION CONTROL BLANKET
	SEEDING, CLASS 2A & MULCH, METHOD 2

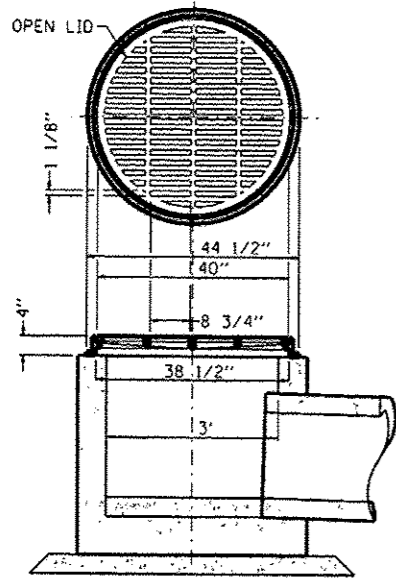
FILE NAME = 6382-7-erosion1.dgn	USER NAME = calson	DESIGNED -	REVISED -
Pl 6282 Breese Roundabout 6382Design 6382-7-erosion1.dgn		DRAWN -	REVISED -
HMG JOB NO. 6382.007	PLOT SCALE = 20.0000 in.	CHECKED -	REVISED -
	PLOT DATE = 4/3/2019	DATE -	REVISED -

**STATE OF ILLINOIS  
DEPARTMENT OF TRANSPORTATION**

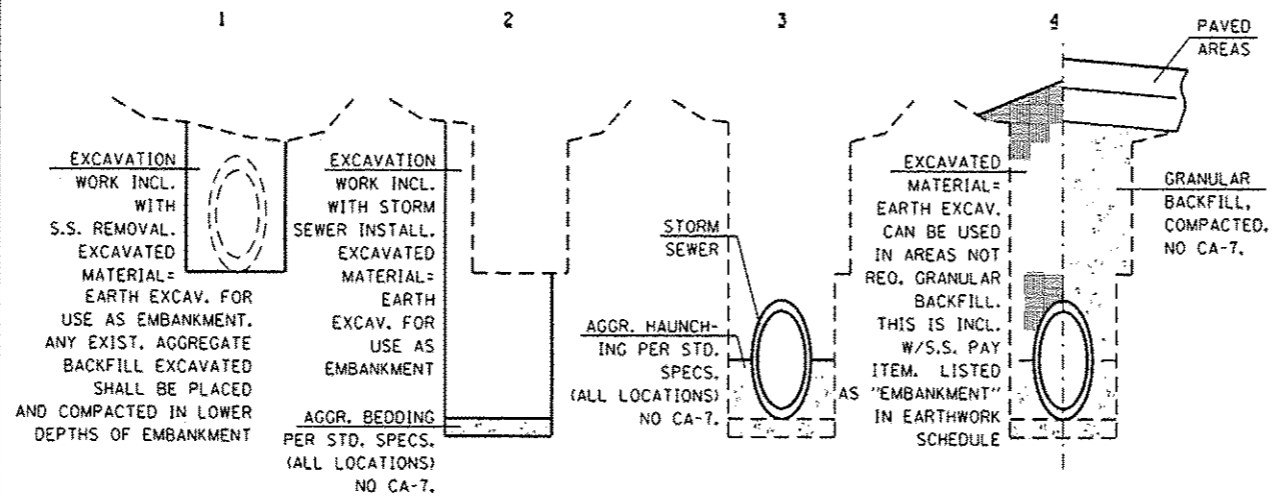
<b>EROSION CONTROL</b>				
SCALE:	SHEET NO.	OF SHEETS	STA.	TO STA.

F.A. RTE.	SECTION	COUNTY	TOTAL SHEETS	SHEET NO.
784	09-00095-01-55	CLINTON	24	15
CONTRACT NO. 9XXXX				
ILLINOIS FED. AID PROJECT				

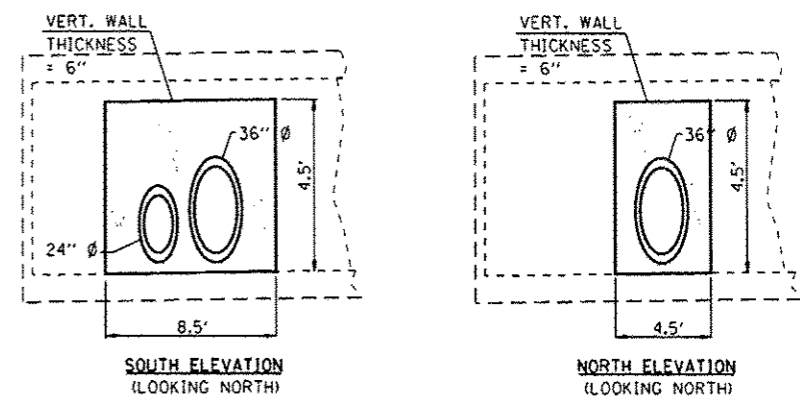
HMG ENGINEERS INC. 10751 AKE ROAD PO BOX 70 CARLYLE IL 62831 PHONE (618) 564-3711 WWW.HMGENGINERS.COM



**INLETS, TYPE B WITH SPECIAL FRAME AND GRATE**

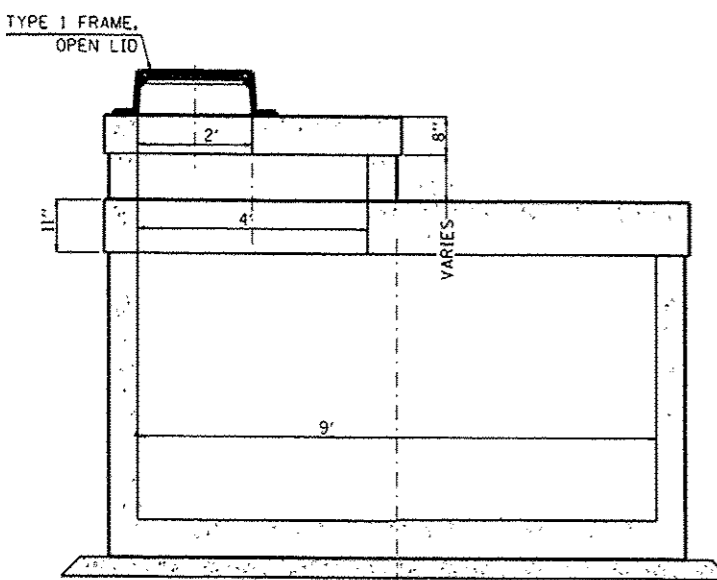


**STORM SEWER EXCAVATION AND BACKFILL**

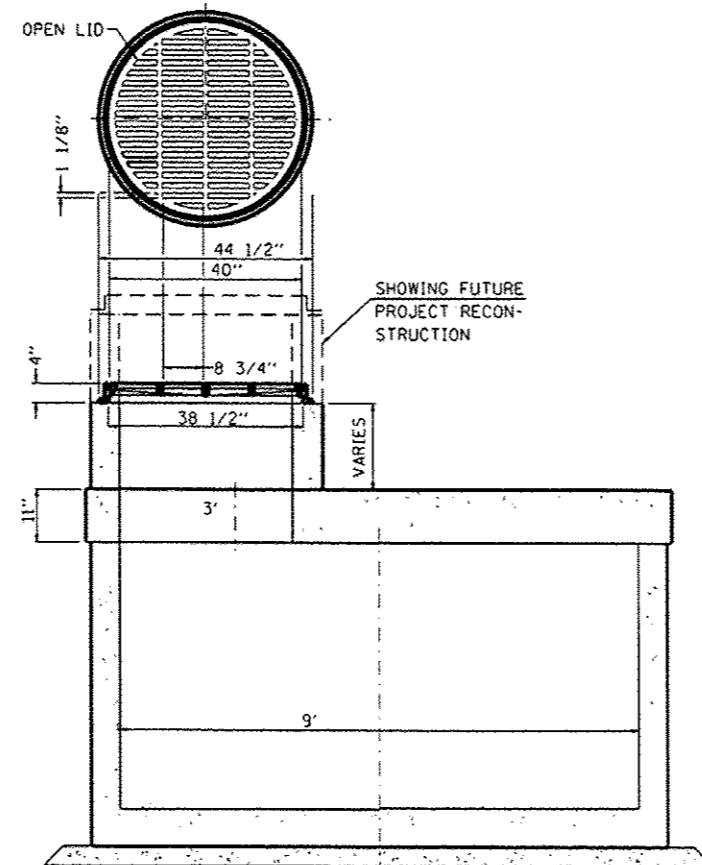


**DRAINAGE STRUCTURE RECONSTRUCTION**

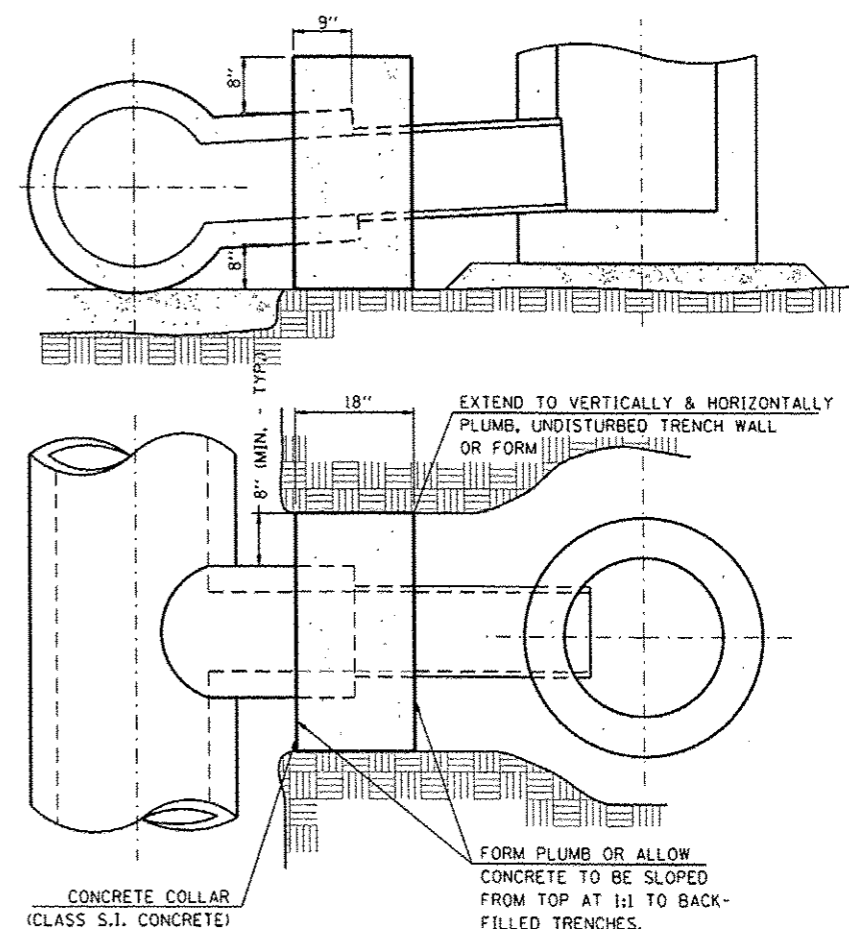
INVOLVES FORMING AND PLACING NON-SHRINK GROUT AROUND PIPE INSERTED INTO EXIST. 6' (s) x 5' (r) BOX CULVERT STRUCTURE.



**MANHOLES, TYPE A, 9'-DIAMETER, TYPE 1 FRAME, OPEN LID**



**MANHOLES, TYPE A, 9'-DIAMETER, WITH SPECIAL FRAME AND GRATE**



**CONCRETE COLLAR DETAIL**

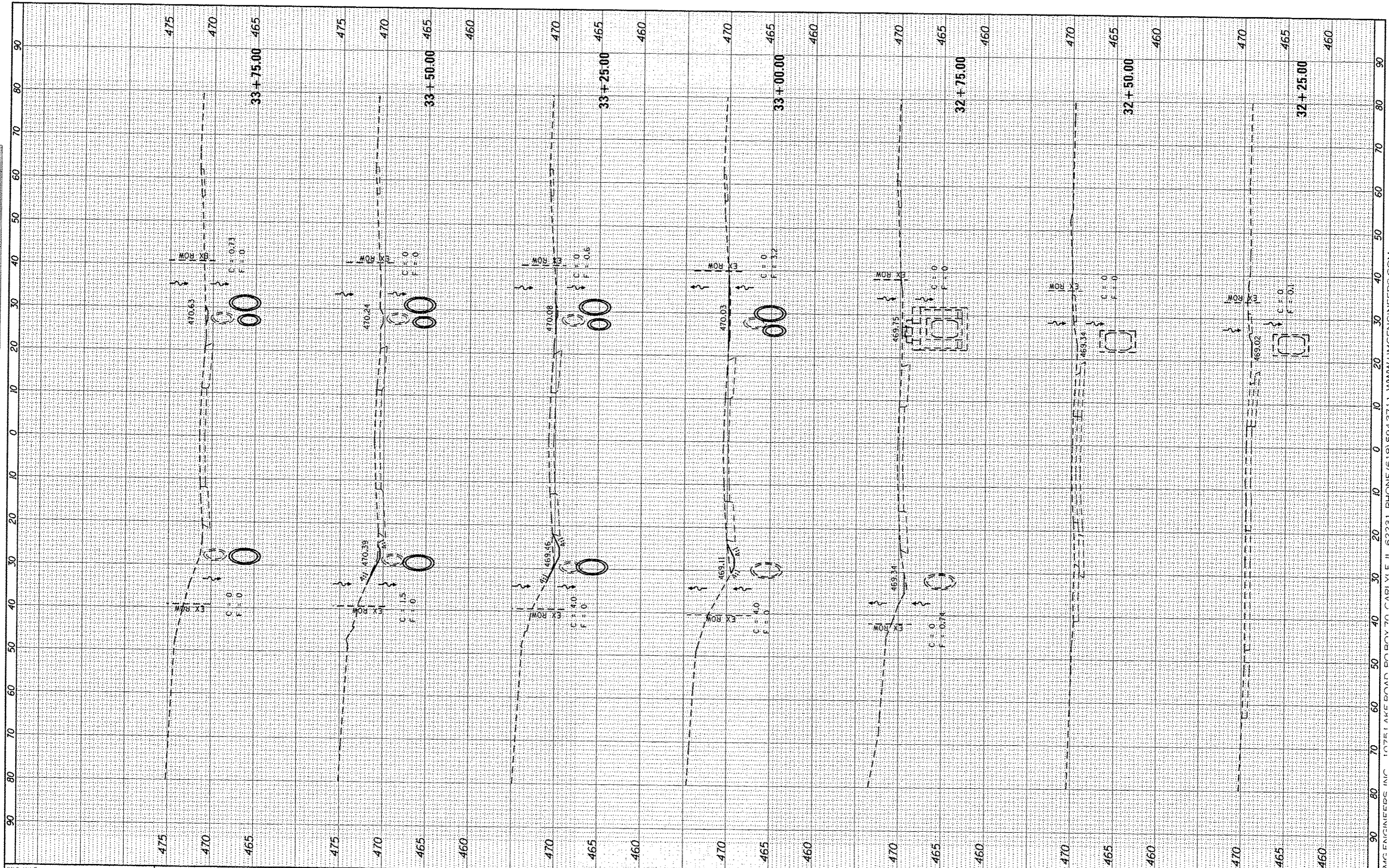
FILE NAME = 6382-07-ssdetail.dwg	USER NAME = gillon	DESIGNED -	REVISED -	<b>STATE OF ILLINOIS DEPARTMENT OF TRANSPORTATION</b>	<b>STORM SEWER DETAILS</b>		F.A. RTE. 784	SECTION 09-00095-01-SS	COUNTY CLINTON	TOTAL SHEETS 24	SHEET NO. 16	
Hi 6382 Breeze Poundabout 6382Design 6382-07-ssdetail.dwg	PLOT SCALE = 20,000 1/4"	DRAWN -	REVISED -		SCALE:	SHEET NO. OF SHEETS	STA. TO STA.	CONTRACT NO. 97598				
HMC JOB NO. 6382.007	PLOT DATE = 4-3-2015	CHECKED -	REVISED -		ILLINOIS FED. AID PROJECT							
		DATE -	REVISED -									

HMC ENGINEERS INC 10751 AKE ROAD PO BOX 70 CARLE VIL IL 62231 PHONE (618) 504-3711 WWW.HMCENGINEERS.COM



FILE NAME	DATE
DATE	
DATE	
DATE	
DATE	
DATE	

FILE NAME	DATE
DATE	
DATE	
DATE	
DATE	
DATE	



FILE NAME	USER NAME	DESIGNED	REVISED
H:\3362 Breeze Poundabout 6382\Design 6382-1\3362\prop-120-334 5-SHT.dgn	c-110n	-	-
Default		DRAWN	REVISED
		-	-
		CHECKED	REVISED
		-	-
		DATE	REVISED
		-	-

USER NAME	DESIGNED
c-110n	-
DATE	REVISED
4-3-2015	-

DESIGNED	REVISED
-	-
DRAWN	REVISED
-	-
CHECKED	REVISED
-	-
DATE	REVISED
-	-

**STATE OF ILLINOIS  
DEPARTMENT OF TRANSPORTATION**

**CROSS SECTIONS**

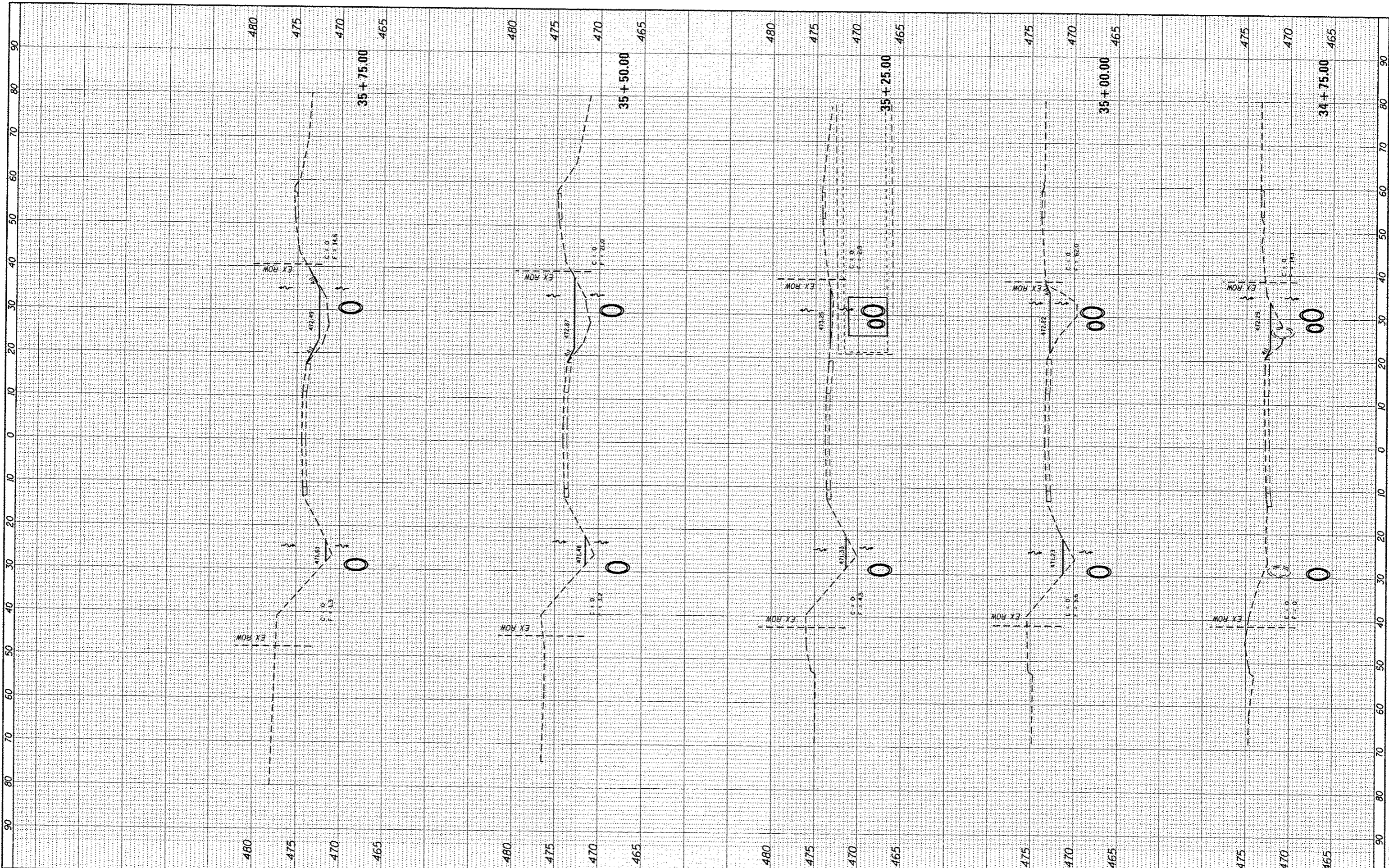
SCALE: SHEET OF SHEETS STA. 32+25.00 TO STA. 33+75.00

F.A.S. RTE.	SECTION	COUNTY	TOTAL SHEETS	SHEET NO.
784	09-00095-01-55	CLINTON	24	17
CONTRACT NO. 97598				
ILLINOIS FED. AID PROJECT				



DATE	
BY	
DESIGNED	
DRAWN	
CHECKED	
DATE	

DATE	
BY	
DESIGNED	
DRAWN	
CHECKED	
DATE	



FILE NAME: \\s16prap\33195\40\75.SHT.dgn  
 My 2382 Bresse Foundation 2382Design 2382-  
 Default

USER: jllson  
 DESIGNED: -  
 DRAWN: -  
 CHECKED: -  
 DATE: -

REVISIONS:  
 REVISION: -  
 REVISION: -  
 REVISION: -  
 REVISION: -

STATE OF ILLINOIS  
 DEPARTMENT OF TRANSPORTATION

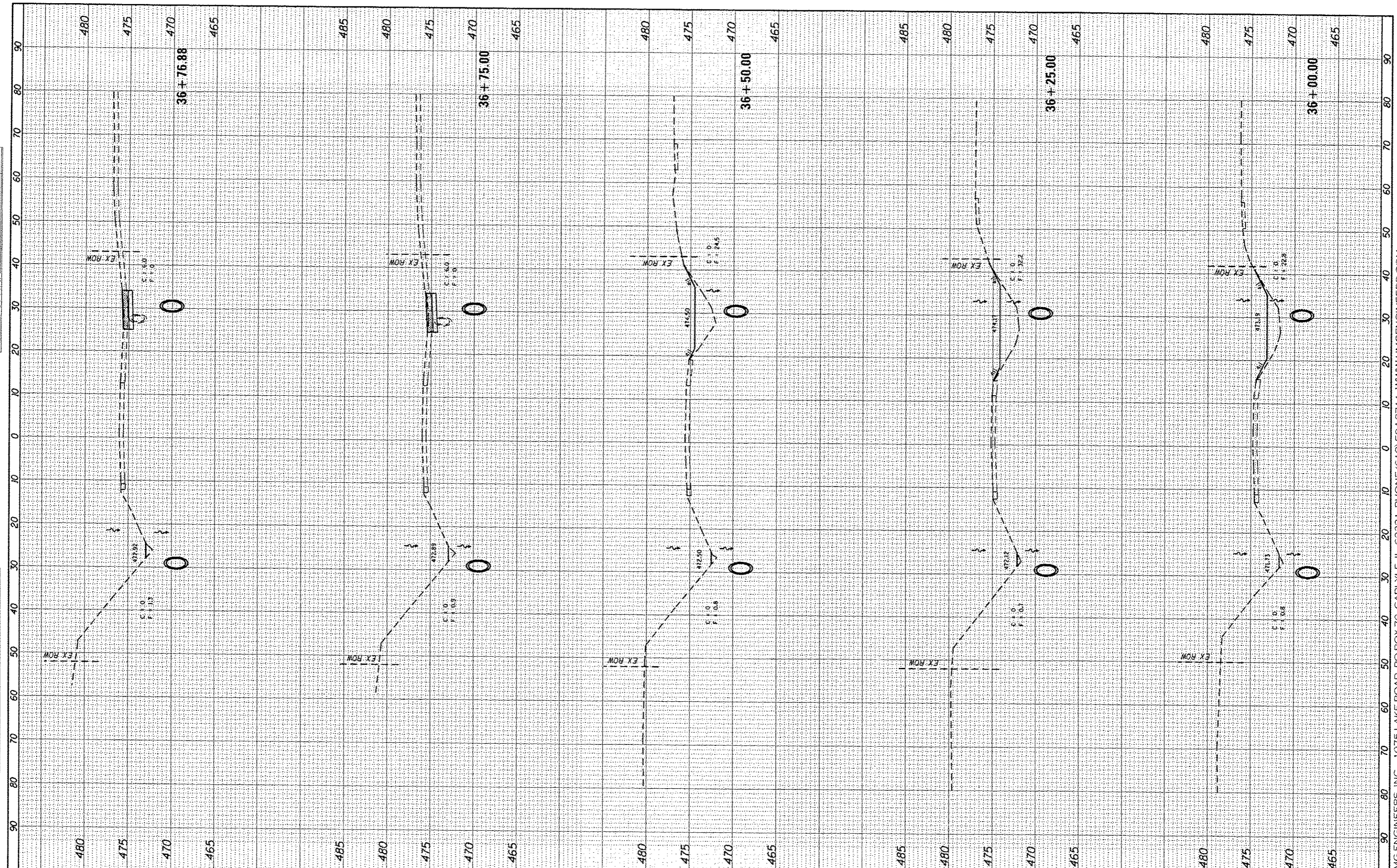
CROSS SECTIONS

SCALE: SHEET OF SHEETS STA. 34+75.00 TO STA. 35+75.00

F.A.S. RTE.	SECTION	COUNTY	TOTAL SHEETS	SHEET NO.
784	09-0095-01-SS	CLINTON	24	19
CONTRACT NO. 97598			ILLINOIS FED. AID PROJECT	

DATE PLOTTED	DATE
DATE CHECKED	DATE
DATE REVISION	DATE
DATE	DATE

DATE PLOTTED	DATE
DATE CHECKED	DATE
DATE REVISION	DATE
DATE	DATE



FILE NAME =  
 H:\2002\Bress Poundabout\2002\Design\2002\1-1.dwg  
 Default

USER NAME = c:\hson  
 PLOT SCALE = 20.0000 in.  
 PLOT DATE = 4/3/2015

DESIGNED	-	REVISED	-
DRAWN	-	REVISED	-
CHECKED	-	REVISED	-
DATE	-	REVISED	-

**STATE OF ILLINOIS  
 DEPARTMENT OF TRANSPORTATION**

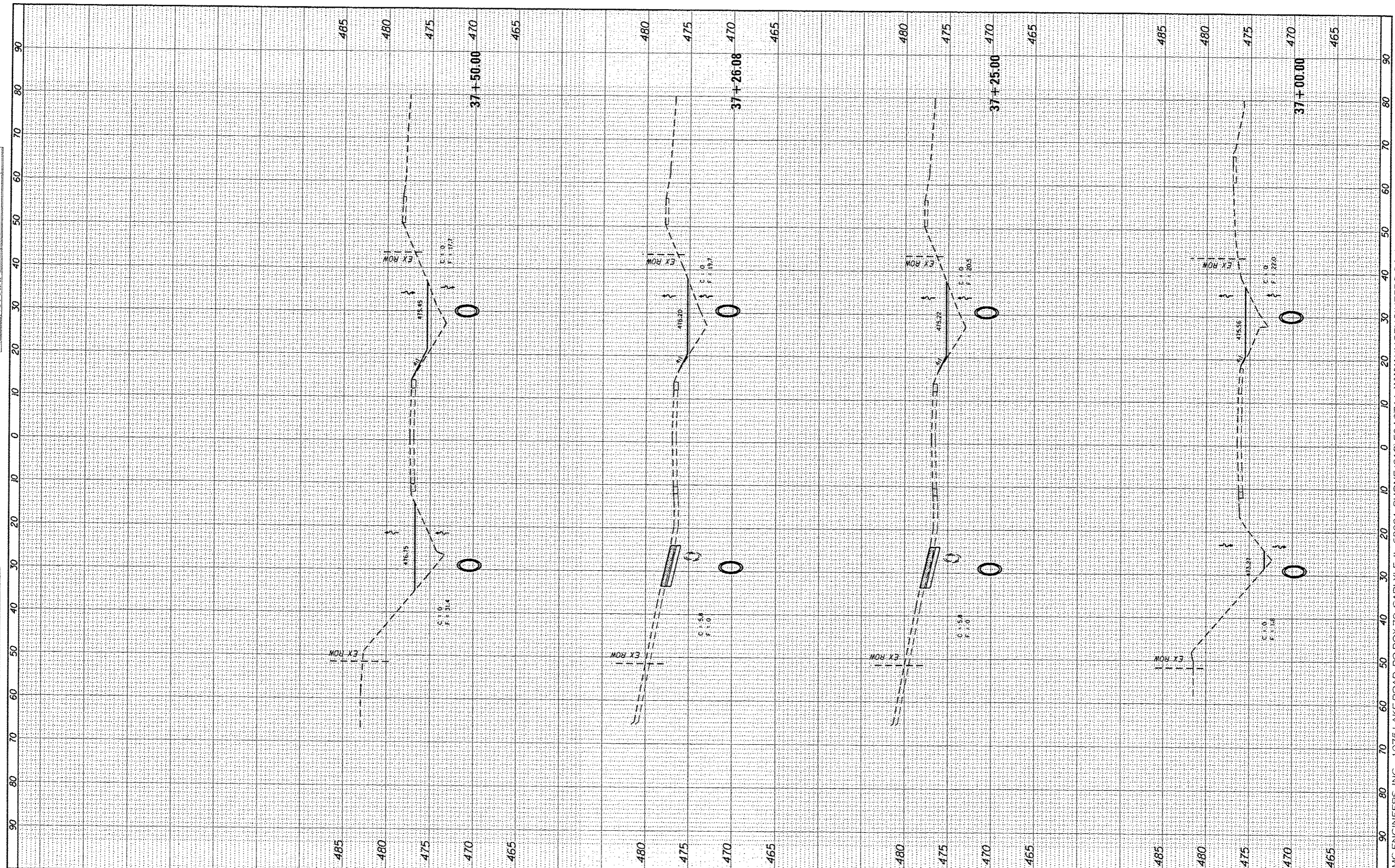
**CROSS SECTIONS**

SCALE: SHEET OF SHEETS STA. 36+00.00 TO STA. 36+76.88

F.A.S. RTE.	SECTION	COUNTY	TOTAL SHEETS	SHEET NO.
784	09-0095-01-55	CLINTON	24	20
			CONTRACT NO. 97598	
ILLINOIS FED. AID PROJECT				

DESIGNED	DATE
DRAWN	DATE
CHECKED	DATE
DATE	

DESIGNED	DATE
DRAWN	DATE
CHECKED	DATE
DATE	



FILE NAME: H:\382 Bresse Pounds\382\Design\382-7-10\382-7-10.dwg  
 USER: jsh  
 PLOT SCALE: 1"=20.000'  
 PLOT DATE: 4-3-2012

DESIGNED -  
 DRAWN -  
 CHECKED -  
 DATE -

REVISED -  
 REVISED -  
 REVISED -  
 REVISED -

STATE OF ILLINOIS  
 DEPARTMENT OF TRANSPORTATION

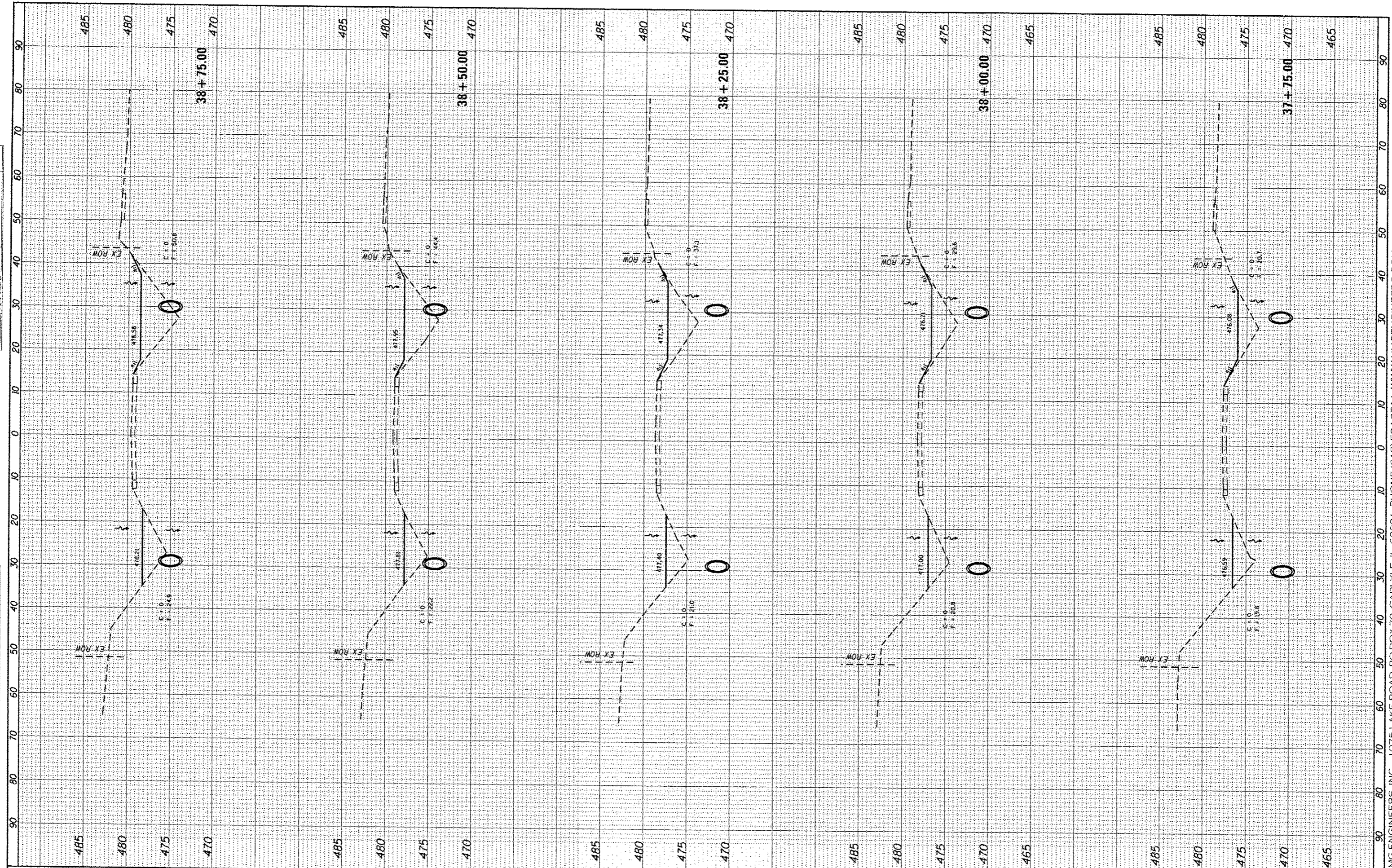
CROSS SECTIONS  
 SCALE: SHEET OF SHEETS STA. 37+00.00 TO STA. 37+50.00

F.A.S. RTE. 784	SECTION 09-0095-01-SS	COUNTY CLINTON	TOTAL SHEETS 24	SHEET NO. 21
CONTRACT NO. 97598				

ILLINOIS FED. AID PROJECT

FILED	DATE
DATE	DATE
DATE	DATE
DATE	DATE
DATE	DATE

DATE	DATE
DATE	DATE
DATE	DATE
DATE	DATE
DATE	DATE



FILE NAME: H:\382 Bress Poundabout 238\Design\382-1-01.dwg  
 USER: jwh  
 PLOT SCALE: 1/8"=1'-0"  
 PLOT DATE: 4/3/2015

DESIGNED: -  
 DRAWN: -  
 CHECKED: -  
 DATE: -

REVISED: -  
 REVISED: -  
 REVISED: -  
 REVISED: -

STATE OF ILLINOIS  
 DEPARTMENT OF TRANSPORTATION

CROSS SECTIONS  
 SCALE: SHEET OF SHEETS STA. 37+75.00 TO STA. 38+75.00

F.A.S. RTE.	SECTION	COUNTY	TOTAL SHEETS	SHEET NO.
784	09-00095-01-55	CLINTON	24	22
CONTRACT NO. 97598				

ILLINOIS FED. AID PROJECT



