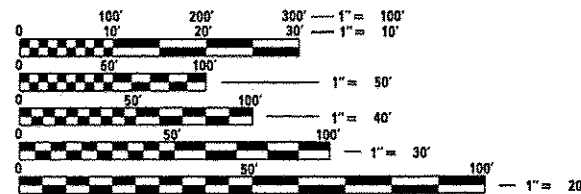


06-12-2015 LETTING ITEM 205
INDEX OF SHEETS

1. COVER SHEET
2. GENERAL NOTES
- 3-5. SUMMARY OF QUANTITIES
6. TYPICAL SECTIONS
7. SCHEDULES
- 8-9. PLAN AND PROFILE
10. DETAILS
- 11-13. CROSS SECTIONS

STANDARDS

- 000001-06 STANDARD SYMBOLS, ABBREVIATIONS, AND PATTERS
- 280001-07 TEMPORARY EROSION CONTROL SYSTEMS
- 542306-02 PRECAST REINFORCED CONCRETE ELLIPTICAL FLARED END SECTION
- 602401-03 MANHOLE TYPE A
- 602601-03 PRECAST REINFORCED CONCRETE FLAT SLAB TOP
- 602701-02 MANHOLE STEPS
- 604001-04 FRAME AND LIDS TYPE 1
- 604031-03 GRATE TYPE 8
- 606001-06 CONCRETE CURB TYPE B AND COMBINATION CONCRETE CURB AND GUTTER
- 606401-01 PAVED DITCH
- 701001-02 OFF-ROAD OPERATIONS, 2L, 2W, MORE THAN 15'(4.5M) AWAY
- 701006-05 OFF-ROAD OPERATIONS, 2L, 2W, 15'(4.5M) TO 24"(600MM) FROM PAVEMENT EDGE
- 701201-04 LANE CLOSURE, 2L, 2W - DAY ONLY
- 701901-04 TRAFFIC CONTROL DEVICES



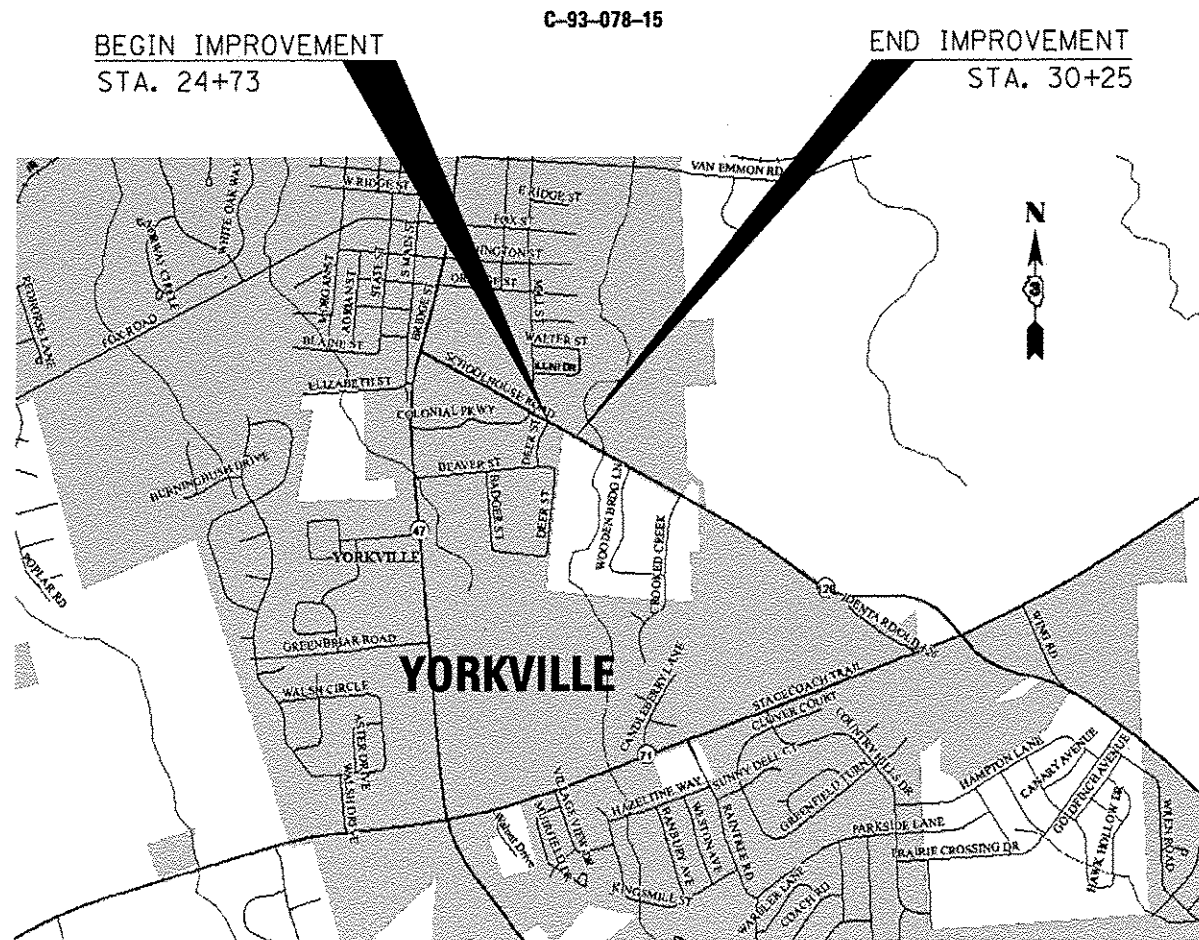
FULL SIZE PLANS HAVE BEEN PREPARED USING STANDARD ENGINEERING SCALES. REDUCED SIZED PLANS WILL NOT CONFORM TO STANDARD SCALES. IN MAKING MEASUREMENTS ON REDUCED PLANS, THE ABOVE SCALES MAY BE USED.

J.U.L.I.E.
JOINT UTILITY LOCATION INFORMATION FOR EXCAVATION
1-800-892-0123
OR 811

PROJECT ENGINEER: JOE KANNEL, P.E.
UNIT CHIEF: RON WOODSHANK
TOWNSHIP: KENDALL
CONTRACT NO. 66E64

STATE OF ILLINOIS
DEPARTMENT OF TRANSPORTATION
DIVISION OF HIGHWAYS
PROPOSED
HIGHWAY PLANS

FAS ROUTE 2312 (IL 126)
SECTION (118)T
DRAINAGE DITCH REPAIR
0.37 MILES EAST OF IL 47
KENDALL COUNTY



GROSS LENGTH = 552.00 FT. = 0.105 MILES
NET LENGTH = 552.00 FT. = 0.105 MILES

F.A.S. RTE. 2312	SECTION (118)T	COUNTY KENDALL	TOTAL SHEETS 13	SHEET NO. 1
		ILLINOIS CONTRACT NO. 66E64		

D-93-042-15



URBAN	
MINOR ARTERIAL	
F. A. S. 2312 (IL 126)	
2014	
ADT	6400
P. V.	91.01%
S. U.	4.69%
M. U.	4.30%

STATE OF ILLINOIS
DEPARTMENT OF TRANSPORTATION
DIVISION OF HIGHWAYS

SUBMITTED April 2 2015
Paul Lott
DEPUTY DIRECTOR OF HIGHWAYS, REGION ENGINEER

May 8 2015
John D. Bovan
ENGINEER OF DESIGN AND ENVIRONMENT

May 8 2015
Emer Omen
DIRECTOR OF HIGHWAYS, CHIEF ENGINEER

PRINTED BY THE AUTHORITY
OF THE STATE OF ILLINOIS

GENERAL NOTES

PLAN DIMENSIONS AND DETAILS RELATIVE TO EXISTING PLANS ARE SUBJECT TO NOMINAL CONSTRUCTION VARIATIONS. THE CONTRACTOR SHALL FIELD VERIFY EXISTING DIMENSIONS AND DETAILS AFFECTING NEW CONSTRUCTION AND MAKE NECESSARY APPROVED ADJUSTMENTS PRIOR TO CONSTRUCTION OR ORDERING OF MATERIALS. SUCH VARIATIONS SHALL NOT BE CAUSE FOR ADDITIONAL COMPENSATION FOR A CHANGE IN SCOPE OF WORK; HOWEVER, THE CONTRACTOR WILL BE PAID FOR THE QUANTITY ACTUALLY FURNISHED AT THE UNIT PRICE BID FOR THE WORK.

THE THICKNESS OF HMA SHOWN ON THE PLANS IS THE NOMINAL THICKNESS. DEVIATIONS FROM THE NOMINAL THICKNESS WILL BE PERMITTED WHEN SUCH DEVIATIONS OCCUR DUE TO IRREGULARITIES IN THE EXISTING SURFACE OR BASE ON WHICH THE HMA IS PLACED.

THE HMA SURFACE OF ALL MAILBOX TURNOUTS, PRIVATE ENTRANCES, COMMERCIAL ENTRANCES, AND SIDE ROADS SHALL BE MADE NEATLY, IN A WORKMANLIKE MANNER, AND SHALL ACCURATELY CONFORM TO THE SHAPES AND DIMENSIONS SHOWN ON THE PLAN DETAILS. IF REQUIRED BY THE ENGINEER, THE CONTRACTOR SHALL SAW CUT THE HMA SURFACE TO CONFORM TO THE SHAPES AND DIMENSIONS SHOWN ON THE PLAN DETAILS. THIS WORK WILL BE INCLUDED IN THE COST OF THE HMA DRIVEWAY PAVEMENT.

BEFORE ORDERING PIPE CULVERTS OR PIPE DRAINS, THE CONTRACTOR SHALL CONSULT THE ENGINEER FOR EXACT LENGTHS.

THE ENGINEER WILL BE THE SOLE JUDGE CONCERNING CURING TIME FOR THE VARIOUS HMA LIFTS.

SEEDING WILL NOT BE PERMITTED AT ANY TIME WHEN THE GROUND IS FROZEN, WET, OR IN AN UNTILLABLE CONDITION. LOCATIONS TO BE SEEDED WILL BE DETERMINED BY THE ENGINEER.

ONLY THOSE TREES DESIGNATED BY THE ENGINEER OR LISTED IN THE TREE REMOVAL SCHEDULE SHALL BE REMOVED. THE CONTRACTOR SHALL PROTECT ALL REMAINING TREES FROM DAMAGE DUE TO HIS OPERATIONS.

THE FINISHED EARTHWORK SHALL HAVE A VEGETATION SUSTAINING SOIL COVERING THE TOP FOUR INCHES IN AREAS TO BE SEEDED OR SODDED. THE VEGETATION SUSTAINING SOIL REQUIRED WILL NOT BE PAID FOR SEPARATELY BUT WILL BE INCLUDED IN THE COST OF FURNISHED EXCAVATION.

ALL EXCAVATED MATERIAL, WHICH INCLUDES DIGGING OR GRADING OF ANY SOIL OR FILL MATERIAL, WITH THE EXCEPTION OF AGGREGATE FILLS, MUST BE INCORPORATED WITHIN THE IDOT RIGHT OF WAY DUE TO ENVIRONMENTAL DOCUMENTATION REQUIREMENTS. EXCAVATED MATERIALS SHALL BE DISPOSED OF AT LOCATIONS DESIGNATED BY THE ENGINEER. ANY SUCH DISPOSAL SHALL BE COMPLETED IN SUCH A MANNER THAT PUBLIC OR PRIVATE PROPERTY WILL NOT BE DAMAGED OR ENDANGERED AND SHALL NOT CREATE AN UNSIGHTLY OR OBJECTIONABLE APPEARANCE OR DETRACT FROM THE NATURAL TOPOGRAPHIC FEATURES WITHOUT WRITTEN PERMISSION FROM THE ENGINEER.

ALL ELEVATIONS REFERRING TO U.S.G.S. MEAN SEA LEVEL DATUM.

ABANDONED UNDERGROUND UTILITIES THAT CONFLICT WITH CONSTRUCTION SHALL BE DISPOSED OF OUTSIDE THE LIMITS OF THE RIGHT OF WAY ACCORDING TO ARTICLE 202.03 OF THE STANDARD SPECIFICATIONS AND AS DIRECTED BY THE ENGINEER. THIS WORK WILL NOT BE PAID FOR SEPARATELY, BUT WILL BE INCLUDED IN THE COST OF EARTH EXCAVATION.

ANY REFERENCE TO A STANDARD IN THESE PLANS SHALL BE INTERPRETED TO MEAN THE EDITION AS INDICATED BY THE SUBNUMBER SHOWN IN THE LIST OF STANDARDS OR THE COPY INCLUDED IN THESE PLANS.

THE FOLLOWING RATES OF APPLICATION HAVE BEEN USED IN CALCULATING PLAN QUANTITIES:

GRANULAR MATERIALS	2.05	TONS / CU YD
HMA RESURFACING	112	LBS / SQ YD / IN
SUPPLEMENTAL WATERING	3	GAL / SQ YD / APPLICATION

THE WORK REQUIRED TO CONNECT ANY SEWER TO AN EXISTING DRAINAGE STRUCTURE OR PIPE WILL NOT BE PAID FOR SEPARATELY, BUT WILL BE CONSIDERED AS INCLUDED IN THE CONTRACT UNIT PRICE BID FOR THE SEWER ITEMS.

COMMITMENTS

MEMBERS OF JULIE KNOWN TO BE WITHIN THE LIMITS OF THE IMPROVEMENT ARE:

AT&T
NICOR

THE CONTRACTOR SHALL CONTACT JULIE AT LEAST 48 HOURS PRIOR TO EXCAVATION TO DETERMINE WHICH UTILITIES ARE IN THE AREA.

HMA MIXTURES TABLE

	INCIDENTAL HMA
PG GRADE	PG 64-22
DESIGN AIR VOIDS	4.0% @ N50
MIXTURE COMPOSITION	IL 9.5
FRICTION AGGREGATE	N/A
DENSITY TEST METHOD	SATISFACTION OF ENGINEER
MIXTURE WEIGHT	112*/SQ. YD./ IN.
QUALITY MANAGEMENT PROGRAM	QC/QA
SUBLOT SIZE	N/A
LOCATIONS	N/A

DATE: April 2, 2015

PREPARED BY: Tom Bonvil
DISTRICT STUDIES & PLANS ENGINEER

EXAMINED BY: Herbert
DISTRICT CONSTRUCTION ENGINEER

[Signature]
DISTRICT MATERIALS ENGINEER

[Signature]
DISTRICT OPERATIONS ENGINEER

CODE NO.	ITEM	UNIT	TOTAL QUANTITY	CONSTR. CODE
				100% STATE ROADWAY 0044 URBAN
20100210	TREE REMOVAL (OVER 15 UNITS DIAMETER)	UNIT	16	16
20400800	FURNISHED EXCAVATION	CU YD	15	15
20800150	TRENCH BACKFILL	CU YD	20	20
25000210	SEEDING, CLASS 2A	ACRE	0.1	0.1
25000400	NITROGEN FERTILIZER NUTRIENT	POUND	9	9
25000500	PHOSPHORUS FERTILIZER NUTRIENT	POUND	9	9
25000600	POTASSIUM FERTILIZER NUTRIENT	POUND	9	9
25100635	HEAVY DUTY EROSION CONTROL BLANKET	SQ YD	505	505
25200200	SUPPLEMENTAL WATERING	UNIT	5	5
28000500	INLET AND PIPE PROTECTION	EACH	3	3
40600275	BITUMINOUS MATERIALS (PRIME COAT)	POUND	8	8
40800050	INCIDENTAL HOT-MIX ASPHALT SURFACING	TON	9	9
44000200	DRIVEWAY PAVEMENT REMOVAL	SQ YD	33	33
44000500	COMBINATION CURB AND GUTTER REMOVAL	FOOT	20	20

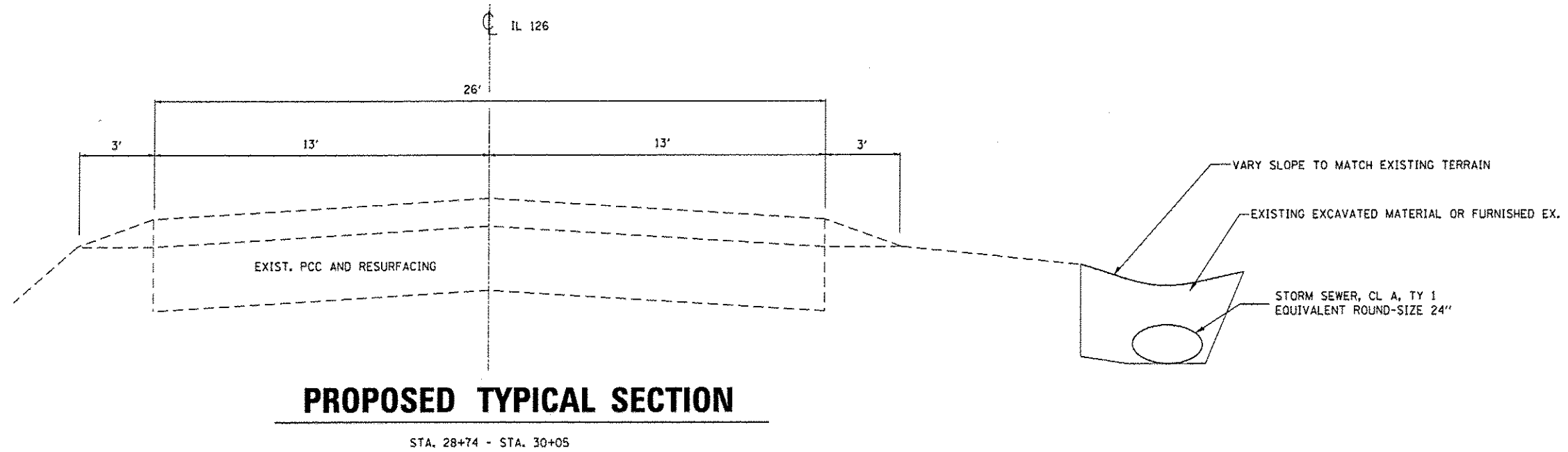
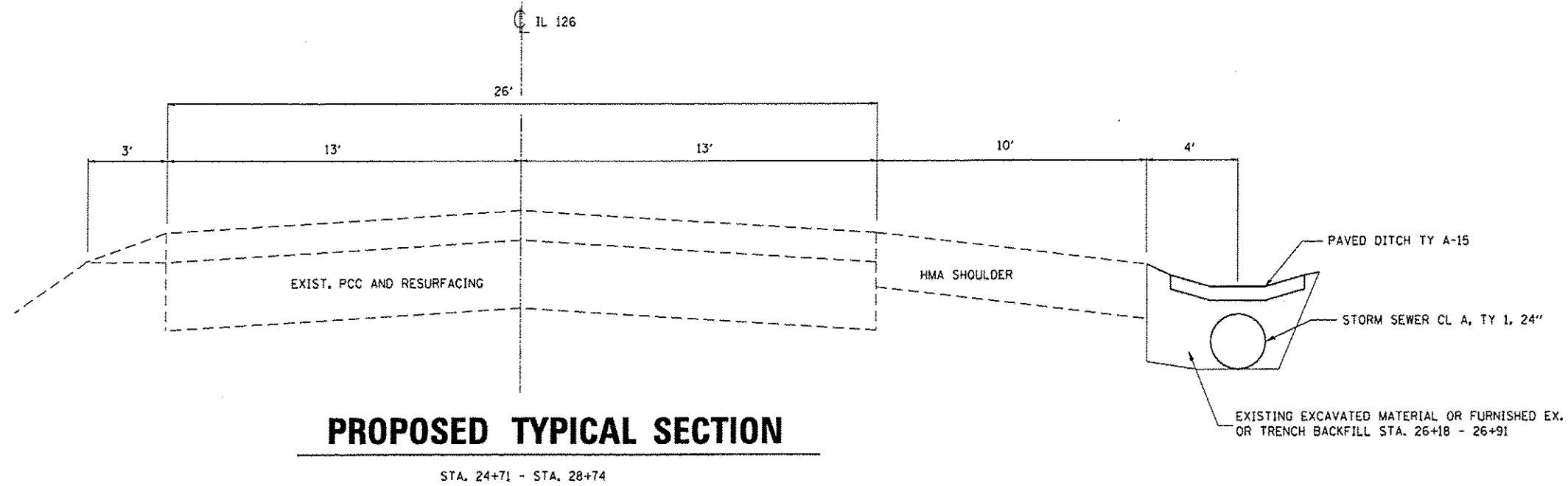
FILE NAME *	USER NAME * patersono	DESIGNED - ECP	REVISED -	STATE OF ILLINOIS DEPARTMENT OF TRANSPORTATION	SUMMARY OF QUANTITIES				F.A.S. RTE.	SECTION	COUNTY	TOTAL SHEETS	SHEET NO.
c:\p\work\p\dot\patersono\d8424387\066E64.sht-detail.dgn		DRAWN - ECP	REVISED -		2312	(118)T	KENDALL	13	3				
PLOT SCALE * 1/8" = 1' / 1"		CHECKED - RW	REVISED -		SCALE: SHEET 1 OF 3 SHEETS STA. TO STA.				CONTRACT NO. 66E64				
PLOT DATE * 4/1/2015		DATE - 3/3/15	REVISED -		ILLINOIS FED. AID PROJECT								

CODE NO.	ITEM	UNIT	TOTAL QUANTITY	CONSTR. CODE
				100% STATE ROADWAY 0044 URBAN
44004000	PAVED DITCH REMOVAL	FOOT	289	289
48102100	AGGREGATE WEDGE SHOULDER, TYPE B	TON	5	5
50105220	PIPE CULVERT REMOVAL	FOOT	109	109
54214719	PRECAST REINFORCED CONCRETE FLARED END SECTIONS - ELLIPTICAL, EQUIVALENT ROUND-SIZE 24"	EACH	1	1
550A0120	STORM SEWERS, CLASS A, TYPE 1 24"	FOOT	366	366
550A4100	STORM SEWERS, CLASS A, TYPE 1 EQUIVALENT ROUND-SIZE 24"	FOOT	156	156
55101400	STORM SEWER REMOVAL 30"	FOOT	8	8
60218400	MANHOLES, TYPE A, 4' -DIAMETER, TYPE 1 FRAME, CLOSED LID	EACH	1	1
60219000	MANHOLES, TYPE A, 4' -DIAMETER, TYPE 8 GRATE	EACH	3	3
60603800	COMBINATION CONCRETE CURB AND GUTTER, TYPE B-6.12	FOOT	20	20
60615400	PAVED DITCH, TYPE A-15	FOOT	289	289
67100100	MOBILIZATION	LSUM	1	1
70100450	TRAFFIC CONTROL AND PROTECTION, STANDARD 701201	LSUM	1	1
X6020084	MANHOLE, SPECIAL	EACH	1	1

FILE NAME =	USER NAME = petersonac	DESIGNED - ECP	REVISED -	STATE OF ILLINOIS DEPARTMENT OF TRANSPORTATION	SUMMARY OF QUANTITIES				F.A.S. RTE.	SECTION	COUNTY	TOTAL SHEETS	SHEET NO.
c:\pwwork\p\dot\petersonac\0242307\066E64-shr-details.dgn	DRAWN - ECP	REVISED -	REVISED -		2312	(118)T	KENDALL	13	4				
PLOT SCALE = 1/8" = 1'-0"	CHECKED - RW	REVISED -	REVISED -		SCALE: SHEET 2 OF 3 SHEETS STA. TO STA.				CONTRACT NO. 66E64				
PLOT DATE = 4/1/2015	DATE - 3/3/15	REVISED -	REVISED -		ILLINOIS FED. AID PROJECT								

CODE NO.	ITEM	UNIT	TOTAL QUANTITY	CONSTR. CODE
				100% STATE ROADWAY
				0044
				URBAN
Z0030850	TEMPORARY INFORMATION SIGNING	50 FT	42	42

FILE NAME *	USER NAME * peter@soned	DESIGNED - ECP	REVISED -	STATE OF ILLINOIS DEPARTMENT OF TRANSPORTATION	SUMMARY OF QUANTITIES			F.A.S. RTE.	SECTION	COUNTY	TOTAL SHEETS	SHEET NO.
di:\pw\work\pripdot\peter@soned\0424307\066E64-ahk-detail.dgn	DRAWN - ECP	REVISED -	2312					(118)T	KENDALL	13	5	
PLOT SCALE * 1/8" = 1' / in.	CHECKED - RW	REVISED -	SCALE:			SHEET 3 OF 3 SHEETS	STA.	TO STA.	ILLINOIS FED. AID PROJECT			
PLOT DATE * 4/1/2015	DATE - 3/3/15	REVISED -	CONTRACT NO. 66E64									



FILE NAME = c:\pwwork\p\idot\petersoneo\d242387	USER NAME = petersoneo	DESIGNED - ECP	REVISED - _____	STATE OF ILLINOIS DEPARTMENT OF TRANSPORTATION	TYPICAL SECTIONS		F.A.S. RTE. = 2312	SECTION = (118)T	COUNTY = KENDALL	TOTAL SHEETS = 13	SHEET NO. = 6
	PLOT SCALE = 1/8" = 1' / in.	CHECKED - RW	REVISED - _____				CONTRACT NO. 66E64				
	PLOT DATE = 4/1/2015	DATE = 3/3/15	REVISED - _____		ILLINOIS FED. AID PROJECT						
				SCALE: _____		SHEET NO. 1 OF 1 SHEETS		STA. 24+71 TO STA. 30+05			

SEEDING SCHEDULE

LOCATION				SEEDING CLASS 2A	NITROGEN FERTILIZER NUTRIENT	PHOSPHORUS FERTILIZER NUTRIENT	POTASSIUM FERTILIZER NUTRIENT	HEAVY DUTY EROSION CONTROL BLANKET	SUPPLEMENTAL WATERING	
				ACRE	POUND	POUND	POUND	SO YD	UNIT	
STA.	24+74	STA.	26+18	RT	0.03	3	3	3	164	2
STA.	26+98	STA.	30+05	RT	0.07	6	6	6	341	3
TOTAL					0.10	9	9	9	505	5

STORM SEWER SCHEDULE

LOCATION				STORM SEWER CL A, TY 1 24"	STORM SEWER CL A, TY 1 ELLIPTICAL EQRS 24"	MANHOLE TY A, 4' -DIA. TY 1 FR. AND CL LID	MANHOLE TY A, 4' -DIA. TY 8 GR.	MANHOLE, SPECIAL	PRC FLARED END SECTION ELLIPTICAL EQRS 24"	PAVED DITCH TY A-15	INLET AND PIPE PROTECTION	TRENCH BACKFILL	PIPE CULVERT REMOVAL	STORM SEWER REMOVAL 30"	PAVED DITCH REMOVAL
				FOOT	FOOT	EACH	EACH	EACH	EACH	FOOT	EACH	CU YD	FOOT	FOOT	FOOT
STA.	24+74	STA.	24+81	RT	12		1	1						8	
STA.	24+81	STA.	26+18	RT	133			1		112	1				112
STA.	26+18	STA.	28+43	RT	221			1		145	1	20	78		145
STA.	28+43	STA.	29+74	RT		127		1		32	1				32
STA.	29+74	STA.	30+05	RT		29			1				31		
TOTAL					366	156	1	1	1	289	3	20	109	8	289

AGGREGATE SCHEDULE

LOCATION				AGGREGATE SHOULDER TY B TONS	
STA.	28+34	STA.	29+74	RT	5
TOTAL					5

DRIVEWAY SCHEDULE

LOCATION			DRIVEWAY PAVEMENT REMOVAL	INCIDENTAL HMA SURFACE	BITUMINOUS MATERIALS (PRIME COAT)	COMB. CURB AND GUTTER REMOVAL	COMB. CURB AND GUTTER TY B 6, 12
			SO YD	TONS	POUND	FOOT	FOOT
STA.	26+62	RT	33	9	8	20	20
TOTAL			33	9	8	20	20

TREE REMOVAL SCHEDULE

LOCATION	OFFSET FEET	TREE REMOVAL > 15 UNITS UNITS
STA. 24+91	37	16
TOTAL		16

- ① 1 EA - MANHOLE, SPECIAL STA. 27+74, 35.5' RT RIM ELEV. 106.42 W. INV 103.13 (EXISTING PIPE) NE. INV 101.50
- ② 12 FT - STORM SEWER CL A, TY 1, 24" ϕ -0.3%
- ③ 1 EA - MAN TY A, 4' DIA, TY1 FR AND CL PRC FLAT TOP SLAB STA. 27+81, 24.0' RT RIM ELEV. 105.5 SW. INV 101.47 E. INV 100.83
- ④ 133 FT - STORM SEWER CL A, TY 1, 24" ϕ -4.74%
- ⑤ 1 EA - MAN TY A, 4' DIA, TY8 GR PRC FLAT TOP SLAB STA. 26+18, 24.0' RT RIM ELEV. 99.00 W. INV 94.77 E. INV 92.53
- ⑥ 221 FT - STORM SEWER CL A, TY 1, 24" ϕ -2.78%
- ⑦ 1 EA - MAN TY A, 4' DIA, TY8 GR, PRC FLAT TOP SLAB STA. 28+43, 24.0' RT RIM ELEV. 90.14 W. INV 86.39 E. INV 86.39

⊕ BENCHMARK 1
SPIKE IN SOUTH FACE OF POWER POLE
ELEV. 106.63

NOTES:

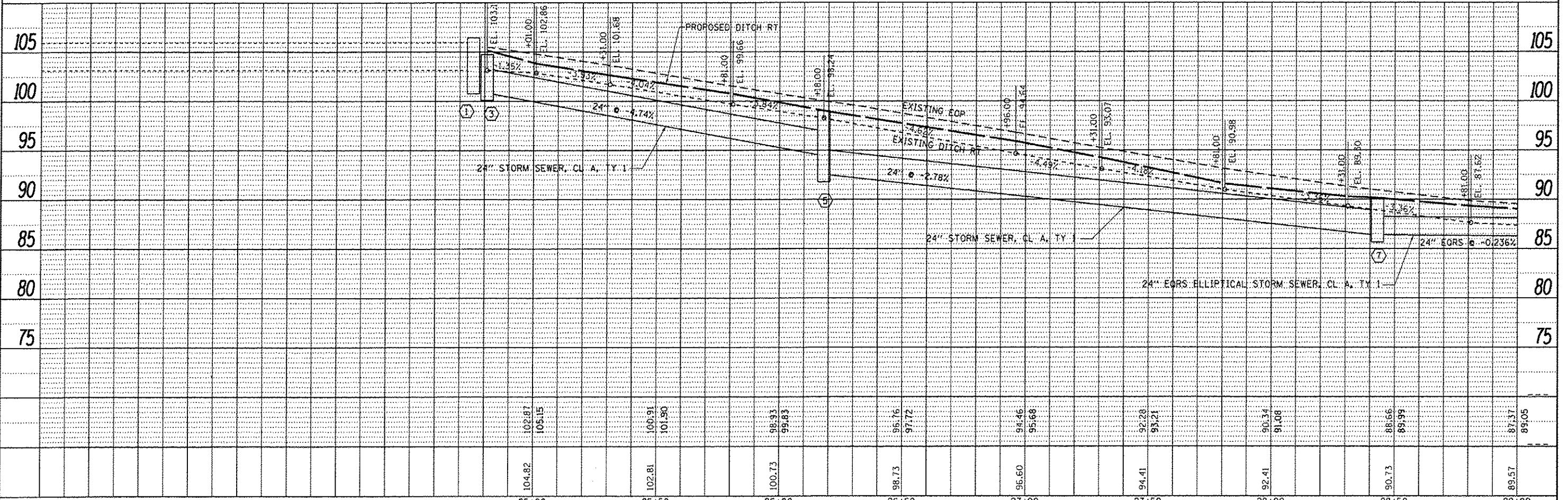
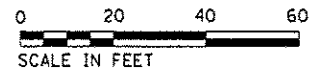
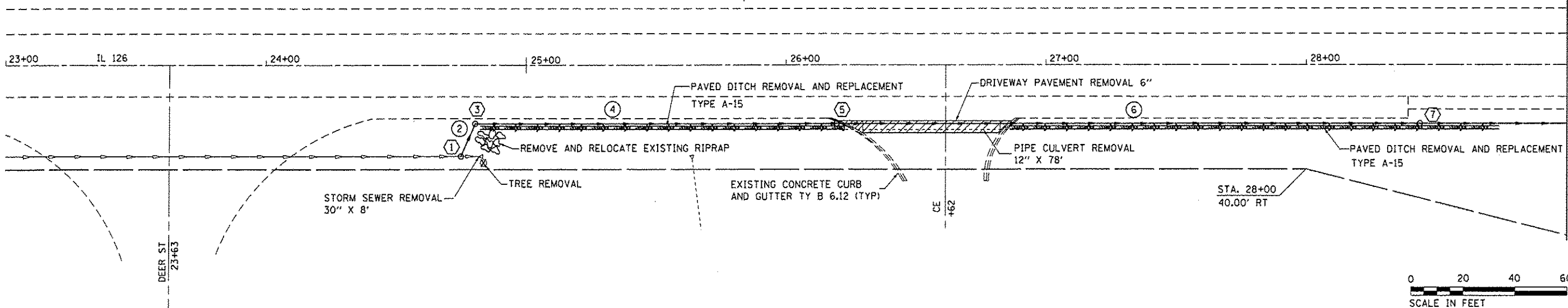
EXISTING SPEED LIMIT SIGN SHALL BE TEMPORARILY RELOCATED DURING CONSTRUCTION AND RETURNED TO ITS LOCATION AFTER COMPLETION OF WORK.

DITCH SLOPES WILL VARY TO MATCH EXISTING TERRAIN.

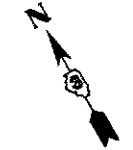


DATE	
BY	
PROF. NO.	
SCALE	
PROJECT	
DATE	
BY	
PROF. NO.	
SCALE	
PROJECT	

DATE	
BY	
PROF. NO.	
SCALE	
PROJECT	
DATE	
BY	
PROF. NO.	
SCALE	
PROJECT	

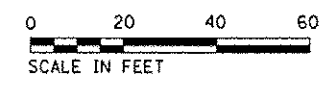
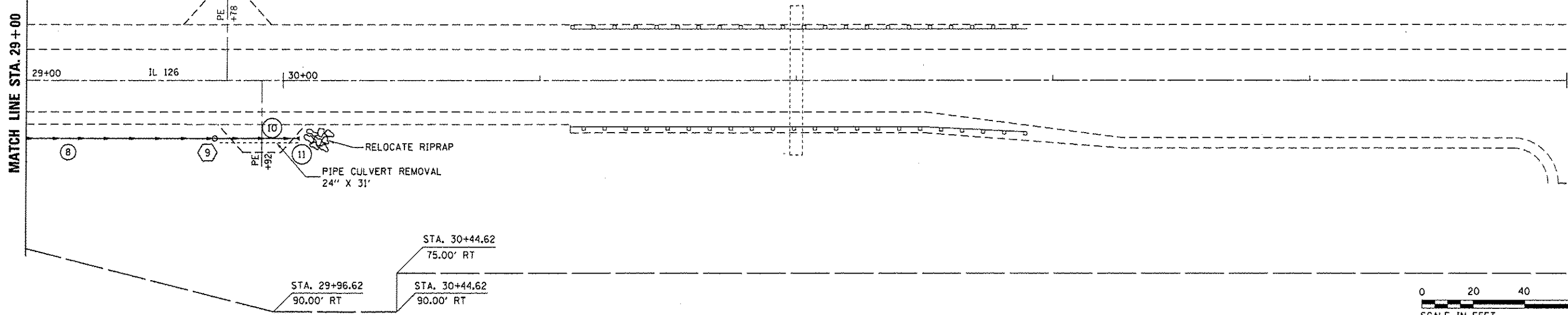


FILE NAME	USER NAME = patorsonae	DESIGNED - ECP	REVISED -	STATE OF ILLINOIS DEPARTMENT OF TRANSPORTATION	PLAN AND PROFILE				F.A.S. RTE.	SECTION	COUNTY	TOTAL SHEETS	SHEET NO.
di:\pw\work\p\idat\patorsonae\0424307\0366664-sh1-details.dgn		DRAWN - ECP	REVISED -		2312	(1187)	KENDALL	13	8				
#MODELNAME#	PLT DATE = 4/1/2015	CHECKED - RW	REVISED -		SCALE: SHEET 1 OF 2 SHEETS STA. 23+00 TO STA. 29+00				CONTRACT NO. 66E64				
		DATE - 3/19/15	REVISED -		ILLINOIS FED. AID PROJECT								

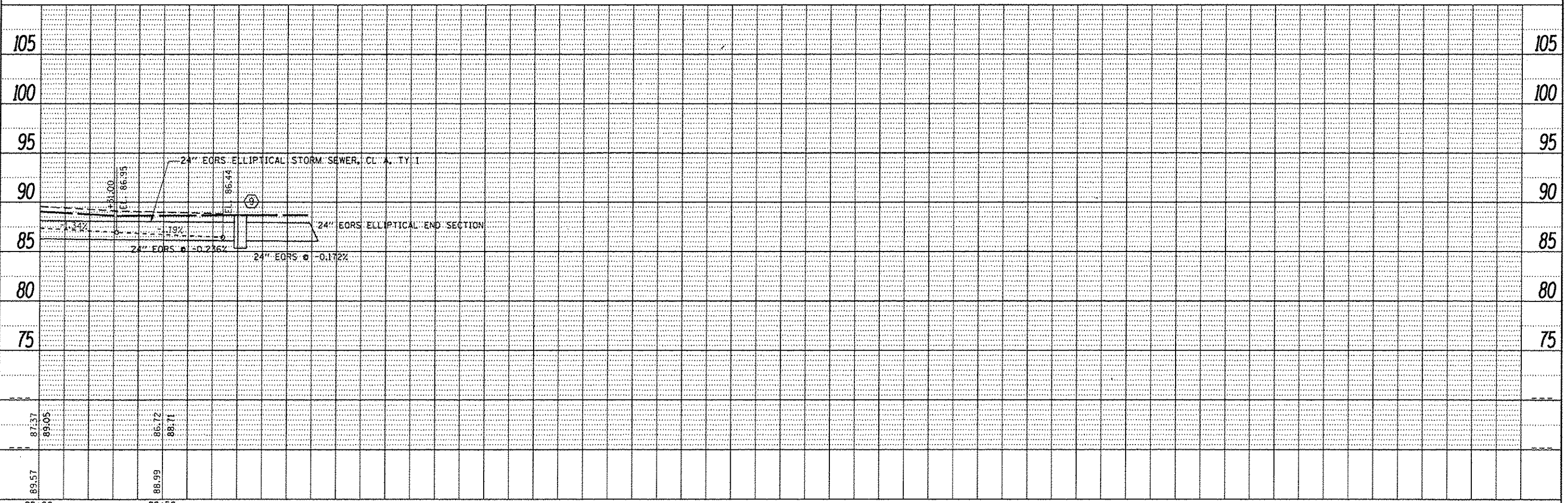


- ⑧ 127 FT - STORM SEWER CL A, TY 1, ELLIPTICAL EORS 24" @ -0.236%
- ⑨ 1 EA - MAN TY A, 4' DIA, TY8 GR, PRC FLAT TOP SLAB
STA. 29+74, 24.0' RT
RIM ELEV. 88.71
W. INV 86.09
E. INV 86.09
- ⑩ 29 FT - STORM SEWER CL A, TY 1, ELLIPTICAL EORS 24" @ -0.172%
- ⑪ 1 EA - PRECAST CONCRETE END SECTION, ELLIPTICAL EORS 24"
STA. 30+05, 24.0' RT
INV 86.04

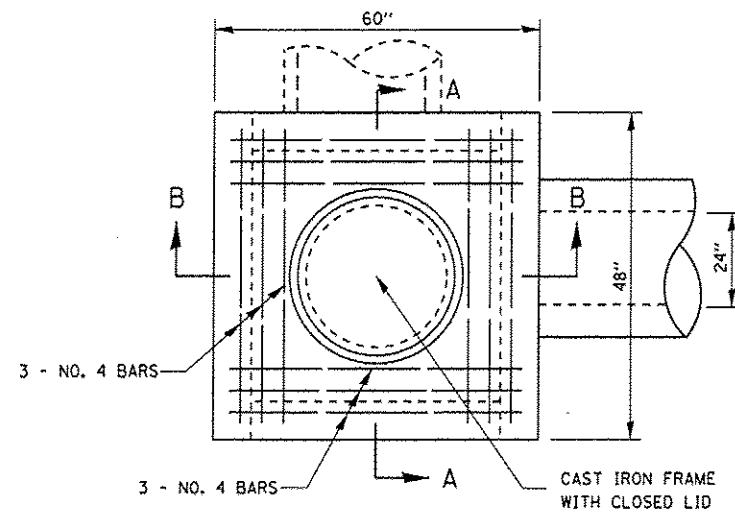
DATE	
BY	
CHECKED	
DESIGNED	
PLANNED	
NOTED	
NO.	



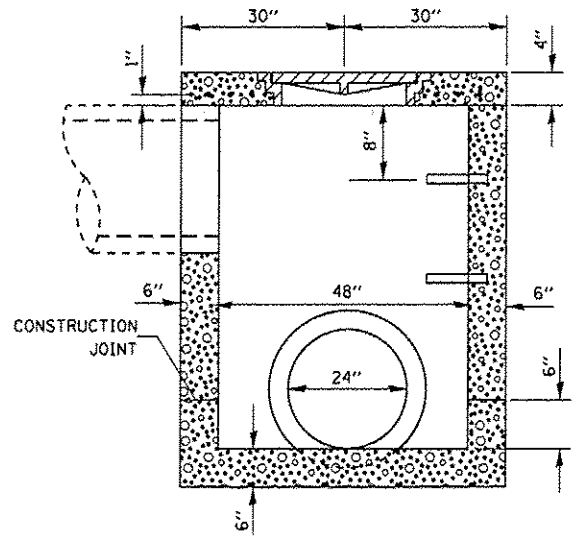
DATE	
BY	
CHECKED	
DESIGNED	
PLANNED	
NOTED	
NO.	



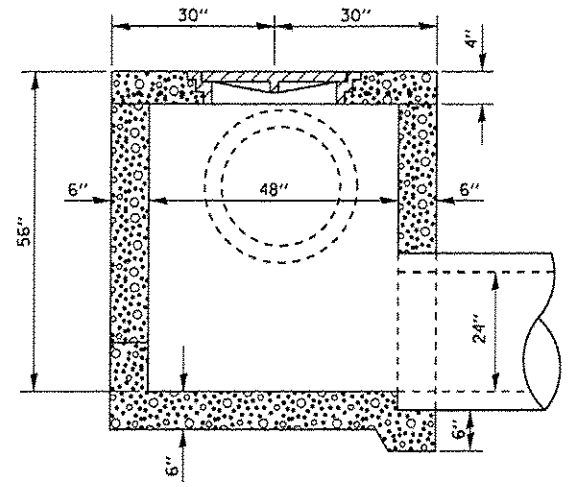
FILE NAME	USER NAME * petersona	DESIGNED - ECP	REVISED -	STATE OF ILLINOIS DEPARTMENT OF TRANSPORTATION	PLAN AND PROFILE	F.A.S. RTE.	SECTION	COUNTY	TOTAL SHEETS	SHEET NO.
cr:\pw\work\p\widat\petersona\d242397\036664-shs-detailed.dgn	DRAWN - ECP	REVISED -	2312			(118T)	KENDALL	13	9	
#MODELNAME#	PLLOT SCALE * 40.0000 / in.	CHECKED - RW	REVISED -			CONTRACT NO. 66E64				
	PLLOT DATE * 4/1/2015	DATE - 3/19/15	REVISED -			ILLINOIS FED. AID PROJECT				



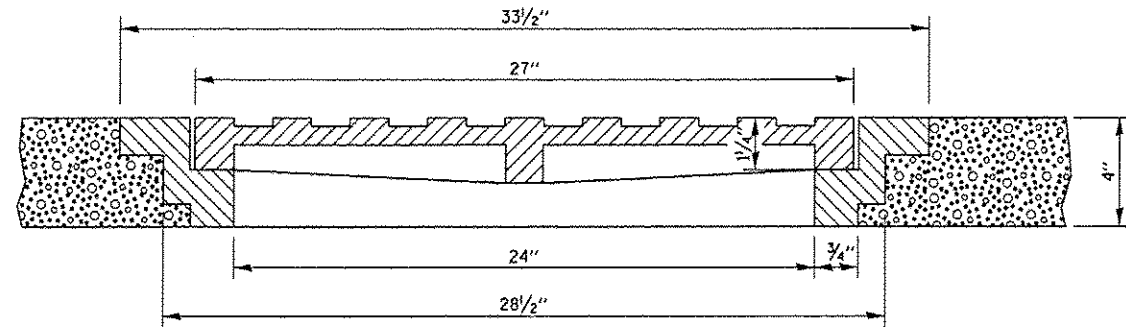
PLAN



SECTION A-A



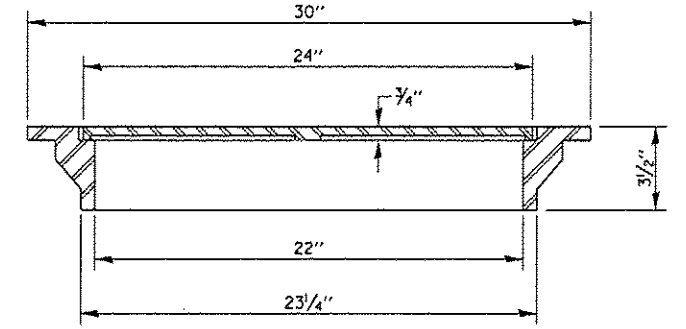
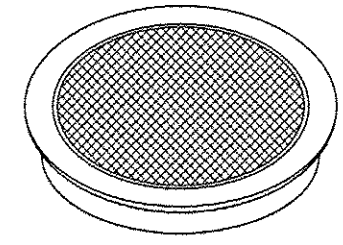
SECTION B-B



SECTION THRU FRAME & LID
WEIGHT OF FRAME & LID, 300 LBS.

NOTES:

- CLASS SI CONCRETE SHALL BE USED THROUGHOUT.
- THE MANHOLE WILL BE PAID FOR AT THE CONTRACT UNIT PRICE EACH FOR MANHOLE, SPECIAL, WHICH PRICE SHALL INCLUDE THE CAST IRON FRAME WITH CLOSED LID, THE STEPS AND THE REINFORCEMENT BARS.
- CONSTRUCT NUMBER OF PIPE CONNECTIONS AS DIRECTED BY THE ENGINEER.
- STEPS AT 12" TO 16" CENTERS SEE STANDARD 602701 FOR DETAILS OF STEPS.



TOTAL WEIGHT: 160 LBS

NOTE:

- THE CLOSED LID MAY BE MADE OF EITHER GRAY IRON OR DUCTILE IRON, CONFORMING TO THE STANDARD SPECIFICATIONS.
- DUCTILE IRON CASTING SHALL BE GRADE 60-40-18 AND SHALL BE PROOF LOADED IN ACCORDANCE WITH FEDERAL SPECIFICATIONS RR-F-621b, SECTION 3.8.
- THE PROOF LOAD SHALL BE 25,000 LBS ON A 9" x 9" CAST BLOCK.

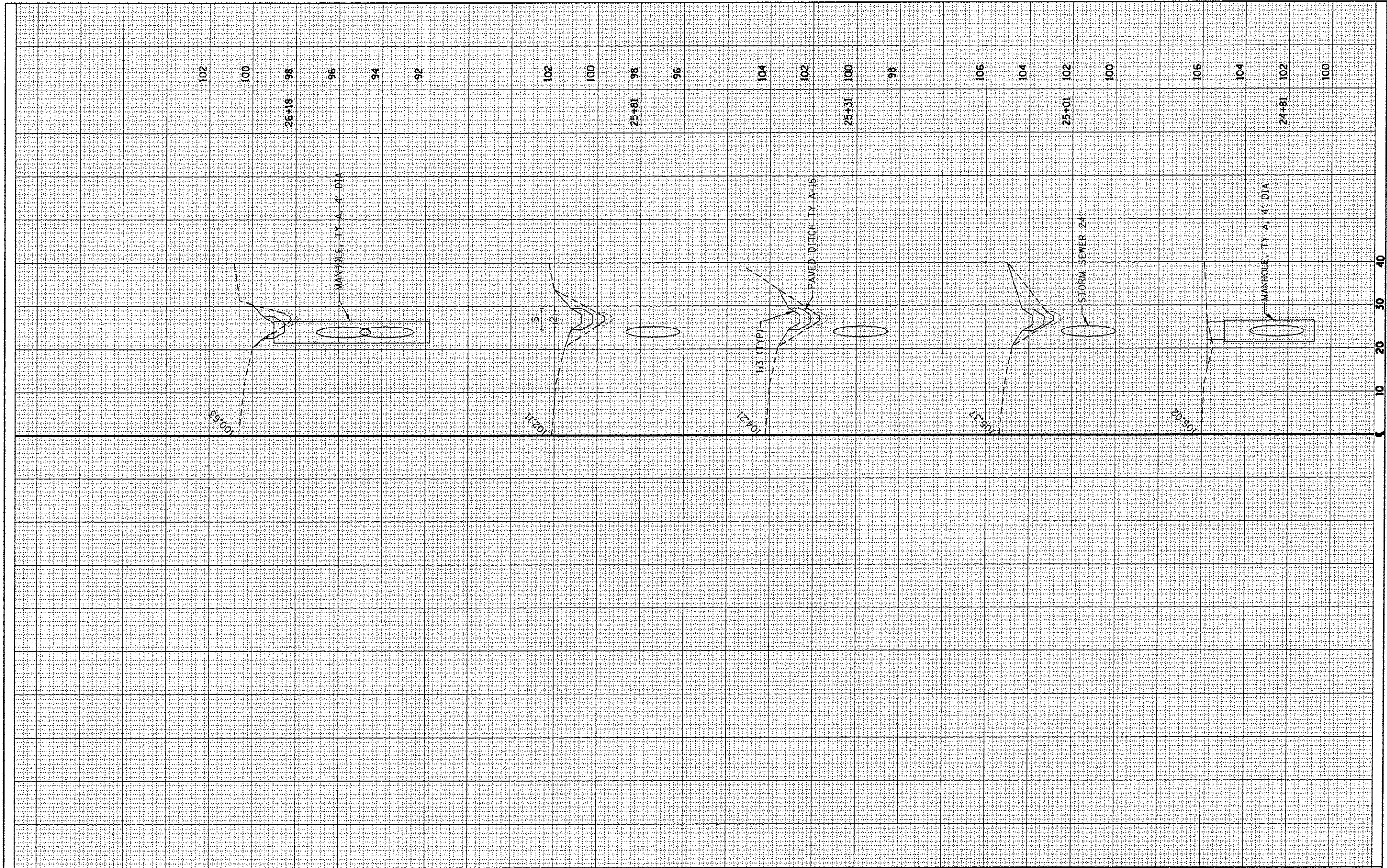
SPECIAL FRAME CLOSED LID

MANHOLE, SPECIAL
PRECAST REINFORCED CONCRETE,
4' DIA., SPECIAL FRAME AND CLOSED LID

FILE NAME *	USER NAME = peter.sono	DESIGNED -- ECP	REVISED --	STATE OF ILLINOIS DEPARTMENT OF TRANSPORTATION	MANHOLE, SPECIAL DETAILS		F.A.S. RTE.	SECTION	COUNTY	TOTAL SHEETS	SHEET NO.
or:\pvc\work\pavidot\peter.sono\d8424387\066E64.sht-details.dgn	DRAWN -- ECP	REVISED --	2312				(1187)	KENDALL	13	10	
PLOT SCALE = 1/80.0000' / in.	CHECKED -- RW	REVISED --	CONTRACT NO. 66E64								
PLOT DATE = 4/1/2015	DATE -- 3/3/15	REVISED --	ILLINOIS FED. AID PROJECT								

FINAL SURVEY	SUBMITTED	DATE
NOTE BOOK	PLOTTED	BY
AS	AREAS EXCEEDED	

ORIGINAL SURVEY	SUBMITTED	DATE
NOTE BOOK	PLOTTED	BY
AS	AREAS EXCEEDED	



FILE NAME *	USER NAME *	DESIGNED -	REVISOR -
c:\pwwork\avidot\petersonec\42424387\0366E64	petersonec	ECP	
	shc-detail.dgn	DRAWN -	REVISOR -
		ECP	
		CHECKED -	REVISOR -
		RW	
		DATE -	REVISOR -
		3/19/15	

**STATE OF ILLINOIS
DEPARTMENT OF TRANSPORTATION**

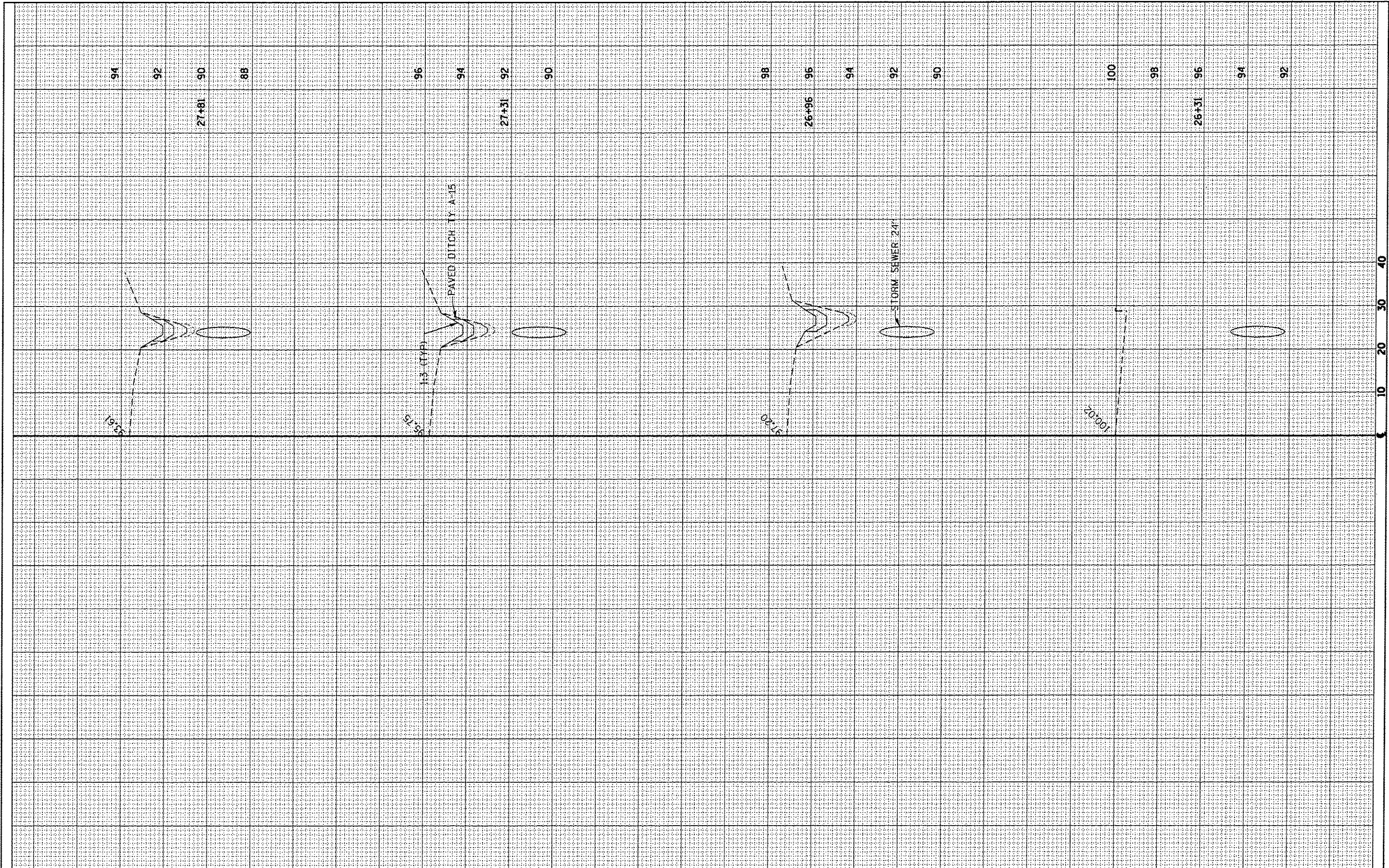
CROSS SECTIONS

SCALE: _____ SHEET 1 OF 3 SHEETS STA. 24+81 TO STA. 26+18

F.A. RTE.	SECTION	COUNTY	TOTAL SHEETS	SHEET NO.
2312	(118T)	KENDALL	13	11
			CONTRACT NO. 66E64	
ILLINOIS FED. AID PROJECT				

FINAL SURVEY	SURVEYED	DATE
NOTE BOOK	PLOTTED	BY
NO.	TEMPLATE	
	AREAS	
	CHECKED	

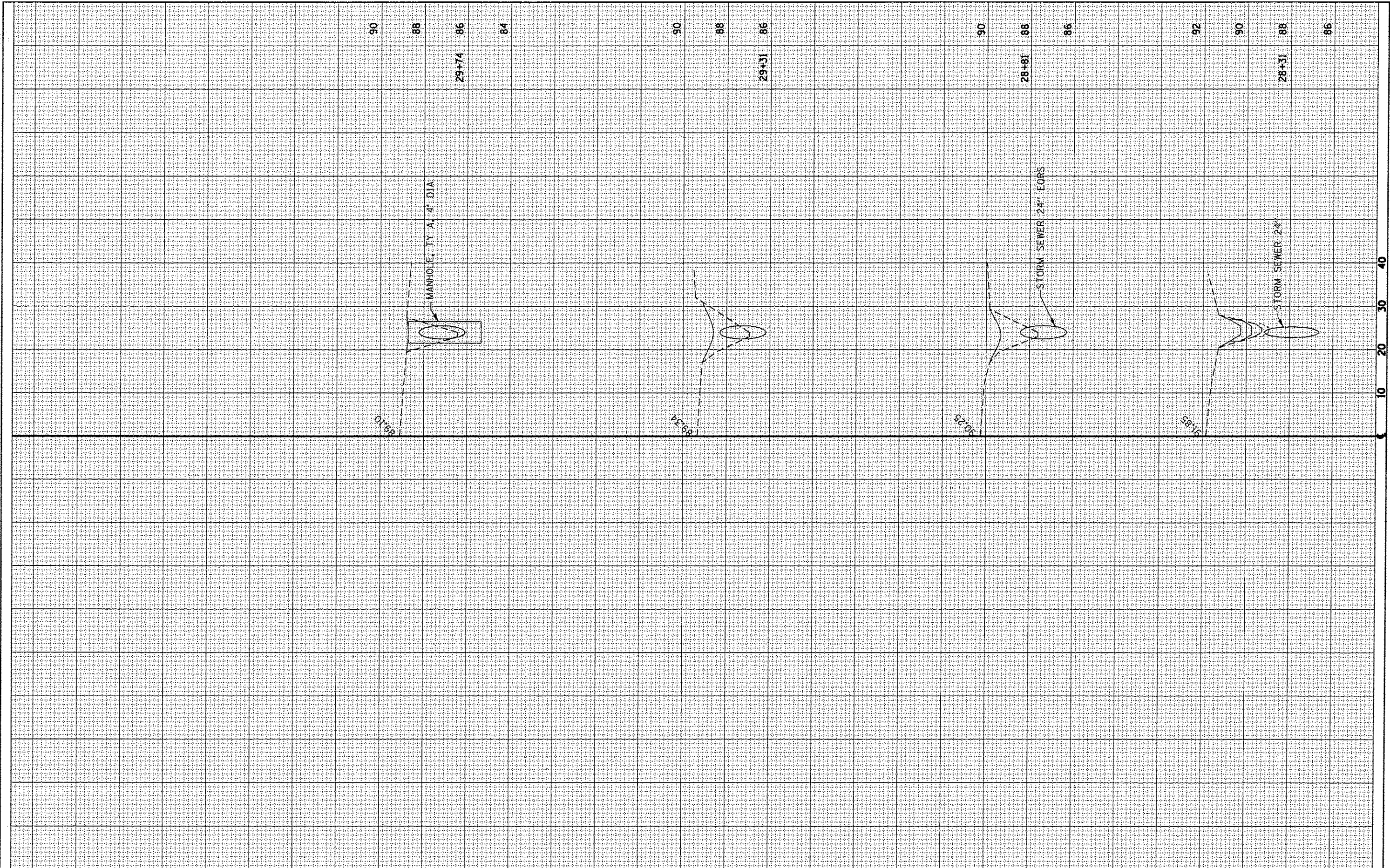
ORIGINAL SURVEY	SURVEYED	DATE
NOTE BOOK	PLOTTED	BY
NO.	TEMPLATE	
	AREAS	
	CHECKED	



FILE NAME =	USER NAME = peter.sonec	DESIGNED - ECP	REVISED -	STATE OF ILLINOIS DEPARTMENT OF TRANSPORTATION	CROSS SECTIONS	F.A. RTE.	SECTION	COUNTY	TOTAL SHEETS	SHEET NO.	
c:\pwwork\pwwork\peter.sonec\d0424387\0366E64	shv-dra1.sld	DRAWN - ECP	REVISED -			2312	(118T)	KENDALL	13	12	
	PLOT SCALE = 28.8276' / in.	CHECKED - RW	REVISED -			CONTRACT NO. 66E64					
MODELNAME	PLOT DATE = 4/1/2015	DATE - 3/9/15	REVISED -			ILLINOIS FED. AID PROJECT					

FINAL SURVEY	DATE
SUBMITTED	BY
PLANNED	
TEMPLATE	
AREAS	
CHECKED	
NO.	

ORIGINAL SURVEY	DATE
SUBMITTED	BY
PLANNED	
TEMPLATE	
AREAS	
CHECKED	
NO.	



FILE NAME *	USER NAME * petersonc	DESIGNED - ECP	REVISED - _____	STATE OF ILLINOIS DEPARTMENT OF TRANSPORTATION	CROSS SECTIONS	F.A. RTE.	SECTION	COUNTY	TOTAL SHEETS	SHEET NO.	
c:\pwwork\pjs\d01\petersonc\10424387\0366E64	shl-details.dgn	DRAWN - ECP	REVISED - _____			2312	(118T)	KENDALL	13	13	
MODELNAME	PLT SCALE * 20.0000' / in.	CHECKED - RW	REVISED - _____			SCALE: _____ SHEET 3 OF 3 SHEETS STA. 28+31 TO STA. 29+74		CONTRACT NO. 66E64			
	PLT DATE * 4/1/2015	DATE - 3/19/15	REVISED - _____			ILLINOIS FED. AID PROJECT					