

STATE OF ILLINOIS
DEPARTMENT OF TRANSPORTATION
DIVISION OF HIGHWAYS

MEETING OF THE GREAT RIVERS SCENIC ROUTE OVERLOOK RESTORATION

| SECTION | COUNTY | TOTAL SHEETS | SHEET NO. |
|---------------------|--------------------|--------------|-----------|
| 12-00235-00-SW | MADISON | 19 | 1 |
| FEDERAL AID PROJECT | CONTRACT NO. 97591 | | |

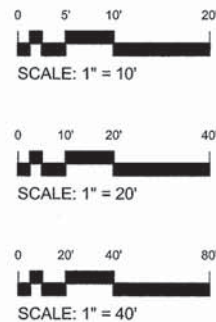
INDEX OF SHEETS

1. COVER SHEET
2. C001 NOTES, LEGEND AND SUMMARY OF QUANTITIES
3. C002 EXISTING SITE SURVEY
4. C003 DEMOLITION PLAN
5. C101 OVERALL SITE PLAN
6. C102 ENLARGED SITE PLANS
7. C103 ENLARGED SITE PLANS
8. C104 EROSION CONTROL PLAN
9. C201 ENLARGED GRADING & DRAINAGE PLAN
10. C202 ENLARGED GRADING & DRAINAGE PLAN
11. C301 SITE DETAILS
12. C302 SITE DETAILS
13. C303 SITE DETAILS
14. L101 LANDSCAPE PLAN
15. L102 PLANTING DETAILS
16. S001 GENERAL STRUCTURAL NOTES
17. S201 WALL PLAN & DETAILS
18. S301 PLAZA TRELIS PLAN & DETAILS
19. A101 RESTROOM RENOVATIONS

SECTION 12-00235-00-SW
PROJECT SBIL12(006)
CITY OF ALTON
MADISON COUNTY
JOB C-98-301-13

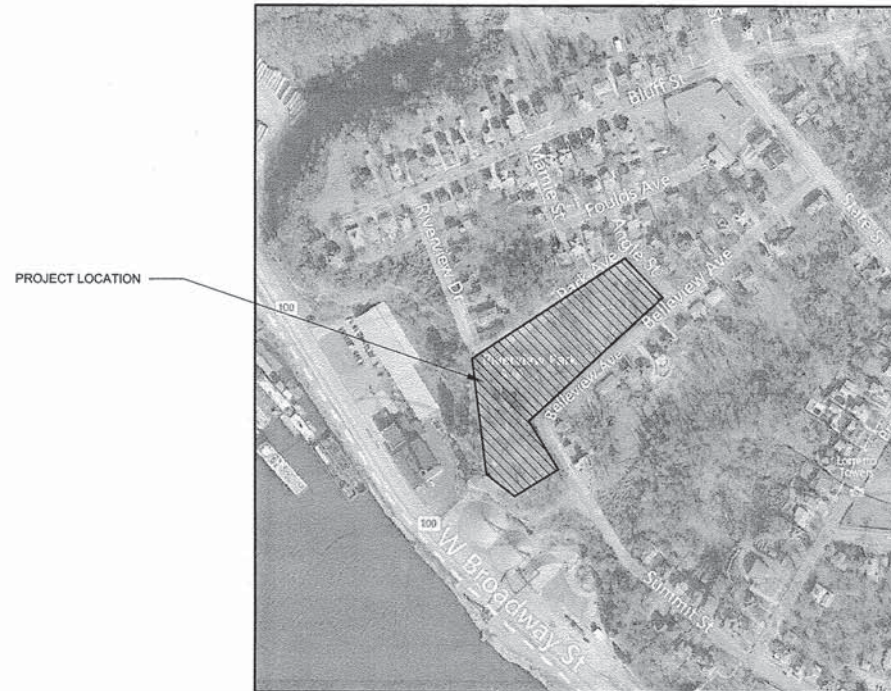
HIGHWAY STANDARDS

- 280001-07
- 780001-05
- 701801-05
- 701901-04
- 424001-08



FULL SIZE PLANS HAVE BEEN PREPARED USING STANDARD ENGINEERING SCALES. REDUCED SIZED PLANS WILL NOT CONFORM TO STANDARD SCALES. IN MAKING MEASUREMENTS ON REDUCED PLANS, THE ABOVE SCALES MAY BE USED.

J.U.L.I.E.
JOINT UTILITY LOCATION INFORMATION FOR EXCAVATION
1-800-892-0123
OR 811



LOCATION MAP

NOT TO SCALE



ILLINOIS DEPARTMENT OF TRANSPORTATION

Approved April 9, 2015
Brent Walker
City of Alton, Mayor

Passed April 15, 2015
[Signature]
District #8 Engineer of Local Roads & Streets

Releasing for Bid Based on Limited Review April 15, 2015
[Signature]
Deputy Director of Highways, Region #5 Engineer

PRINTED BY THE AUTHORITY OF
THE STATE OF ILLINOIS

CTA ARCHITECTS ENGINEERS
411 EAST MAIN STREET
SUITE 101
BOZEMAN, MT 59715
PHONE (406) 556-7100
FAX (406) 585-3031

FOR SHEETS 1 - 15



DATE SIGNED 4-2-15
EXPIRATION DATE 11-30-15

CIVIL ENGINEER

FOR SHEETS 16 - 18



DATE SIGNED 4/1/2015
EXPIRATION DATE 11/30/16

STRUCTURAL ENGINEER

FOR SHEETS 19



DATE SIGNED 4/2/2015
EXPIRATION DATE 11/30/2016

ARCHITECT



CALL AT LEAST 2 WORKING DAYS BEFORE YOU DIG
811 OR 1-800-892-0123

A FEDERAL LAW NOW IN EFFECT STATES THAT ANY PERSON WHO ENGAGES IN EXCAVATION ACTIVITIES WITHOUT FIRST USING AN AVAILABLE ONE-CALL NOTIFICATION SYSTEM TO DETERMINE LOCATIONS OF UNDERGROUND FACILITIES; OR WITHOUT HEEDING LOCATION INFORMATION OR MARKINGS AND SUBSEQUENT DAMAGES A PIPELINE FACILITY SHALL BE SUBJECT TO A FINE, IMPRISONMENT, OR BOTH. THE LAW ALSO STATES THAT OSHA MAY BE NOTIFIED OF ANY ACCIDENT CAUSED BY AN EXCAVATOR.

GENERAL NOTES:

- THIS PROJECT SHALL BE CONSTRUCTED ACCORDING TO THE "STANDARD SPECIFICATIONS FOR ROAD AND BRIDGE CONSTRUCTION" ADOPTED JANUARY 1, 2012 AND THE SPECIAL PROVISIONS OF THE PROJECT CONTRACT.
- EXCEPT WHERE DESIGNATED OTHERWISE, THE LOCATIONS AND/OR DEPTHS OF UNDERGROUND UTILITIES SHOWN HAVE BEEN TAKEN FROM OFFICE RECORD INFORMATION FURNISHED BY THE UTILITY OWNERS AND MUST BE CONSIDERED APPROXIMATE.
- ALL ELEVATIONS REFER TO NATIONAL GEODETIC SURVEY (N.G.S.) DATUM.
- PROPOSED ELEVATIONS SHOWN ON THE PLANS AS ± ARE APPROXIMATE, EXACT ELEVATIONS SHALL BE DETERMINED BY THE ENGINEER IN THE FIELD.

COMMITMENTS:
NONE

LEGEND:

- ⊙ SANITARY SEWER MANHOLE
- ⊕ STORM CATCH BASIN - EXISTING
- ⊕ TRANSFORMER
- ⊕ TELEPHONE PEDESTAL
- ⊕ FIRE HYDRANT
- ⊕ WATER VALVE
- ⊕ LIGHTPOLE
- ⊕ SINGLE POLE SIGN
- CONTOURS - EXISTING
- ⊕ DECIDUOUS TREE
- ⊕ CONIFEROUS TREE
- ⊕ CONCRETE - EXISTING
- ⊕ CONCRETE - DEMO
- ⊕ ASPHALT - EXISTING
- ⊕ ASPHALT - DEMO
- FENCE
- ss --- SANITARY SEWER LINE - EXISTING
- wm --- WATER LINE - EXISTING
- bt --- UNDERGROUND TELEPHONE - EXISTING
- irr --- IRRIGATION LINE - EXISTING
- gas --- UNDERGROUND GAS LINE - EXISTING
- bp --- UNDERGROUND ELECTRIC - EXISTING
- PROPERTY BOUNDARY
- BUILDING
- W --- WATER LINE - NEW
- SS --- SANITARY SEWER - NEW
- NG --- GAS LINE - NEW
- F --- FIRE LINE - NEW
- BP --- BURIED POWER - NEW
- COMM --- COMMUNICATION LINE - NEW
- ⊕ CONCRETE - NEW
- ⊕ ASPHALT STANDARD - NEW
- ⊕ STORM TRENCH DRAIN - NEW
- ⊕ STORM MANHOLE - NEW
- ⊕ LIGHT POLE - NEW
- ⊕ ASPHALT SEAL COAT - NEW

| | | | |
|---------------------|---------|--------------------|-----------|
| SECTION | COUNTY | TOTAL SHEETS | SHEET NO. |
| 12-00235-00-SW | MADISON | 19 | 2 |
| FEDERAL AID PROJECT | | CONTRACT NO. 97591 | |

REVISIONS

SUMMARY OF QUANTITIES

| Item Number | Pay Item Description | Unit of Measure | Quantity |
|--------------|---|-----------------|----------|
| 20100110 | TREE REMOVAL (6 TO 15 UNITS DIAMETER) | UNIT | 8 |
| * 21101505 | TOPSOIL EXCAVATION AND PLACEMENT | CU YD | 56 |
| * 21101625 | TOPSOIL FURNISH AND PLACE, 6" | SQ YD | 931 |
| 21400100 | GRADING AND SHAPING DITCHES | FOOT | 30 |
| Δ 25000115 | SEEDING, CLASS 1B | ACRE | 0.31 |
| Δ * 25100105 | MULCH, METHOD 1 | ACRE | 0.31 |
| 28000400 | PERIMETER EROSION BARRIER | FOOT | 440 |
| 35100300 | AGGREGATE BASE COURSE, TYPE A 4" | CU YD | 76.9 |
| 42400100 | PORTLAND CEMENT CONCRETE SIDEWALK 4 INCH | SQ FT | 4894 |
| 42400800 | DETECTABLE WARNINGS | SQ FT | 40 |
| 44000100 | PAVEMENT REMOVAL | SQ YD | 32.1 |
| 44000161 | HOT-MIX ASPHALT SURFACE REMOVAL, 3" | SQ YD | 238.1 |
| 44000300 | CURB REMOVAL | FOOT | 16 |
| * 542C0211 | PIPE CULVERTS, CLASS C, TYPE 1 6" | FOOT | 7 |
| Δ * 56200300 | WATER SERVICE LINE 1" | FOOT | 42 |
| 67100100 | MOBILIZATION | LSUM | 1 |
| 72400310 | REMOVE SIGN PANEL - TYPE 1 | SQ FT | 30 |
| 72400710 | RELOCATE SIGN PANEL - TYPE 1 | SQ FT | 30 |
| Δ 78008210 | POLYUREA PAVEMENT MARKING TYPE 1 - LINE 4" | FOOT | 660 |
| Δ B2001116 | TREE, CERES CANADENSIS (EASTERN RED BUD), 2" CALIPER, TREE FORM, BALLED AND BURLAPPED | EACH | 6 |
| Δ B2001316 | TREE, CORNUS FLORIDA (FLOWERING DOGWOOD), 2" CALIPER, TREE FORM, BALLED AND BURLAPPED | EACH | 4 |

* SPECIALITY ITEM

| Item Number | Pay Item Description | Unit of Measure | Quantity |
|--------------|---|-----------------|----------|
| Δ E20220G1 | VINE - PARTHENOCISSUS TRICUSPIDATA (BOSTON IVY), 1-GALLON POT | EACH | 20 |
| Δ * K1003679 | MULCH | CU YD | 0.89 |
| X0301430 | PRECAST CONCRETE PARKING BLOCK | EACH | 3 |
| * X0322983 | STONE CURB | FOOT | 44 |
| * X0325225 | BRICK PAVEMENT REMOVAL AND REPLACEMENT | SQ FT | 135 |
| * X5030225 | CONCRETE STRUCTURES (SPECIAL) | CU YD | 75 |
| Δ * X5051200 | FURNISH AND ERECTING STRUCTURAL STEEL, SPECIAL | LSUM | 1 |
| * X6060505 | CONCRETE CURB (SPECIAL) | FOOT | 228.5 |
| * X0323407 | FLAG POLES | EACH | 1 |
| Δ * X0323553 | ORNAMENTAL FENCE, WROUGHT IRON | FOOT | 215 |
| * XX007457 | FLAGSTONE PAVERS | SQ FT | 512 |
| * X0326817 | STANDARD BRICK VENEER | SQ FT | 1052 |
| Δ * X0327404 | DRINKING FOUNTAIN REMOVAL & REPLACEMENT | EACH | 1 |
| * Z0004002 | BOLLARDS | EACH | 7 |
| Z0022800 | FENCE REMOVAL | FOOT | 215 |
| * XX007100 | LIMESTONE CAP | FOOT | 120 |
| * Z0013798 | CONSTRUCTION LAYOUT | LSUM | 1 |
| * X4240420 | PORTLAND CEMENT CONCRETE SIDEWALK 4 INCH, SPECIAL | SQ FT | 886 |
| Δ * XX000504 | RESTORATION WORK | LSUM | 1 |
| | * SPECIAL PROVISION | | |
| | Δ SPECIALTY ITEMS | | |

NOTE TO CONTRACTOR - CALL 1-800-424-5555 TWO WORKING DAYS PRIOR TO ANY EXCAVATION TO HAVE ALL EXISTING UTILITIES LOCATED.

MEETING OF THE GREAT RIVERS
SCENIC BYWAY
OVERLOOK RESTORATION
SECTION 12-00235-00-SW

GENERAL NOTES,
SUMMARY OF
COMMITMENTS
& LEGEND

COPYRIGHT
CTA INC.
ALL RIGHTS RESERVED
DRAWN BY: KA
CHECKED BY: MS
DATE: 04-10-2015
CTA # ALTONRIV_SB



NOTES AND LEGEND

SHEET
C001

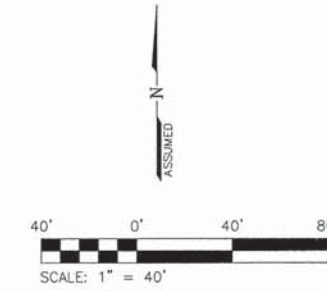
| SECTION | COUNTY | TOTAL SHEETS | SHEET NO. |
|---------------------|---------|--------------------|-----------|
| 12-00235-00-SW | MADISON | 19 | 3 |
| FEDERAL AID PROJECT | | CONTRACT NO. 97591 | |

REVISIONS

PLAT OF SURVEY

of part of the Southwest Quarter of
Section 11 Township 5 North, Range 10
West of the Third Principal Meridian,
City of Alton, Madison County, Illinois

W
SUB
(P.B)



- SURVEY LEGEND**
- IRON PIN OR PIPE FOUND
 - CONCRETE MONUMENT FOUND
 - ⊕ DRILL ROD FOUND
 - ⊕ CUT "X" FOUND
 - CLENCHED PIPE FOUND
 - IRON PIN OR PIPE FOUND
 - 1/2" IRON PIN SET
 - xxx.xx' MEASURED DIMENSION
 - (xxx.xx') RECORDED DIMENSION
 - EXISTING RIGHT OF WAY LINE
 - PROPERTY LINE
 - UNDERGROUND ELECTRIC
 - - - EXISTING FENCE
 - BOLLARD
 - ⊕ TREE 24" DIAMETER OR LARGER
 - ⊕ LIGHT POLE
 - ⊕ SIGN
 - ⊕ WATER SPIGOT
 - ⊕ CLEANOUT
 - n/s NOT SUBDIVIDED

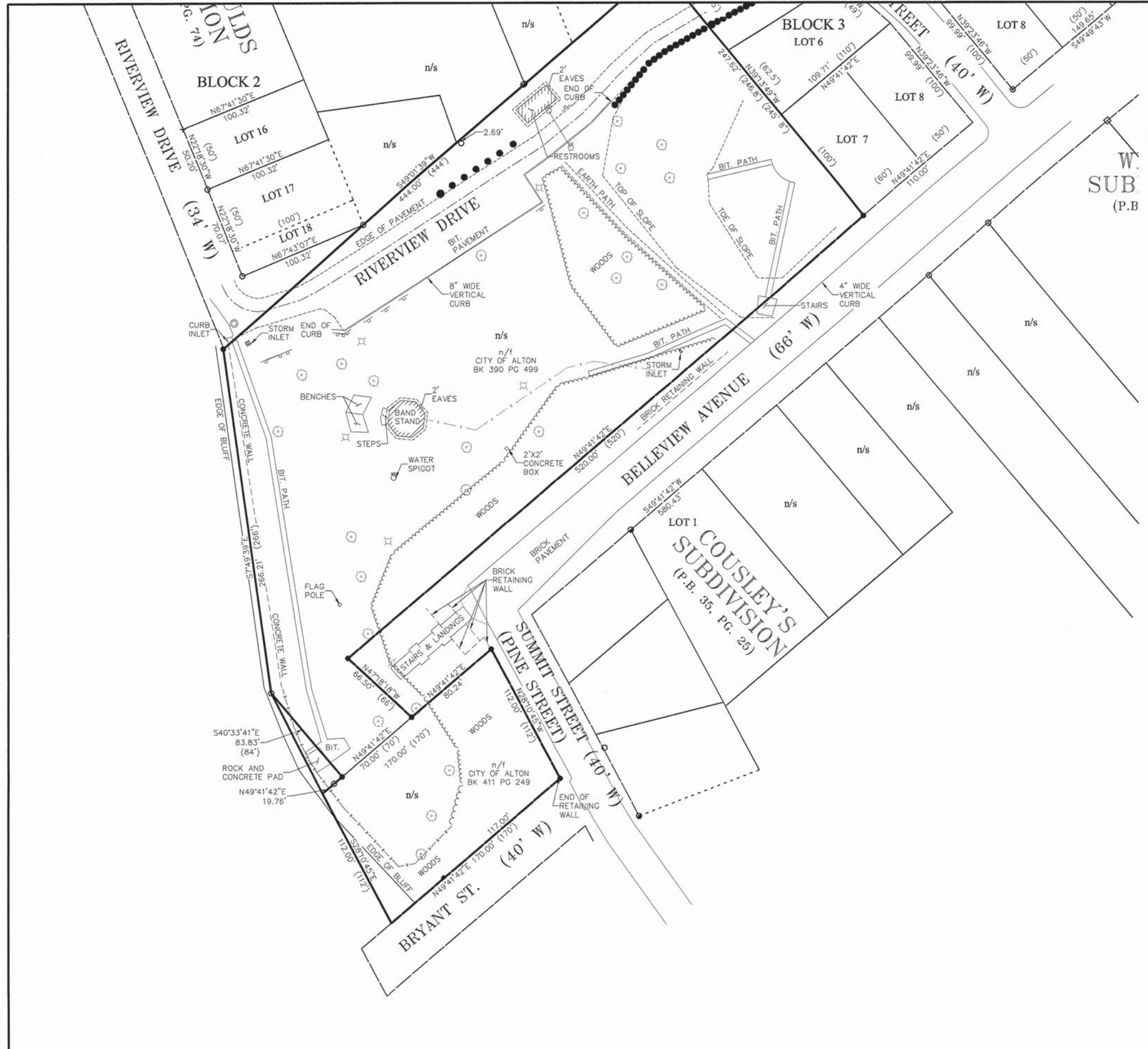
NOTE:
BASIS OF BEARING IS THE SOUTHEASTERLY RIGHT OF
WAY LINE OF BELLEVUE AVENUE. ASSUMED BEARING
BEING S49°41'42"W.

NOTE:
EXISTING SITE SURVEY PROVIDED BY:
HENEGHAN AND ASSOCIATES, P.C.
1004 STATE HWY. 16
JERSEYVILLE, ILLINOIS 62052
PHONE: (618) 498-6418
SURVEY DATED: AUGUST 28, 2014
SURVEY PROJECT NO.: 2235-101

THE CONTRACTOR SHALL BE SOLELY RESPONSIBLE FOR LOCATING ALL EXISTING
UTILITY INSTALLATIONS ABOVE AND BELOW GROUND IN ADVANCE OF THE PROJECT
BY CONTACTING THEIR RESPECTIVE OWNERS. ALL COSTS RELATED TO LOCATING
EXISTING UTILITIES ARE INCIDENTAL AND SHALL NOT BE PAID SEPARATELY. NOT ALL
UTILITIES ARE IDENTIFIED ON THE PLANS. NOTIFY ENGINEER OF POTENTIAL
CONFLICTS.

NOTE TO CONTRACTOR -
CALL 1-800-424-5555 TWO WORKING
DAYS PRIOR TO ANY EXCAVATION TO
HAVE ALL EXISTING UTILITIES
LOCATED.

A FEDERAL LAW NOW IN EFFECT STATES THAT ANY PERSON WHO ENGAGES IN
EXCAVATION ACTIVITIES WITHOUT FIRST USING AN AVAILABLE ONE-CALL
NOTIFICATION SYSTEM TO DETERMINE LOCATIONS OF UNDERGROUND FACILITIES;
OR WITHOUT HEEDING LOCATION INFORMATION OR MARKINGS AND SUBSEQUENT
DAMAGES A PIPELINE FACILITY SHALL BE SUBJECT TO A FINE, IMPRISONMENT, OR
BOTH. THE LAW ALSO STATES THAT OSHA MAY BE NOTIFIED OF ANY ACCIDENT
CAUSED BY AN EXCAVATOR.



MEETING OF THE GREAT RIVERS
SCENIC BYWAY
OVERLOOK RESTORATION
SECTION 12-00235-00-SW

EXISTING
SITE SURVEY

COPYRIGHT
CTA INC.
ALL RIGHTS RESERVED
DRAWN BY: KA
CHECKED BY: MS
DATE: 04-10-2015
CTA # ALTONRIV_SW

CTA
EXISTING
SITE SURVEY

SHEET
C002

| SECTION | COUNTY | TOTAL SHEETS | SHEET NO. |
|---------------------|--------------------|--------------|-----------|
| 12-00235-00-SW | MADISON | 19 | 4 |
| FEDERAL AID PROJECT | CONTRACT NO. 97591 | | |

REVISIONS

MEETING OF THE GREAT RIVERS
SCENIC BYWAY
OVERLOOK RESTORATION
SECTION 12-00235-00-SW

DEMOLITION
PLAN

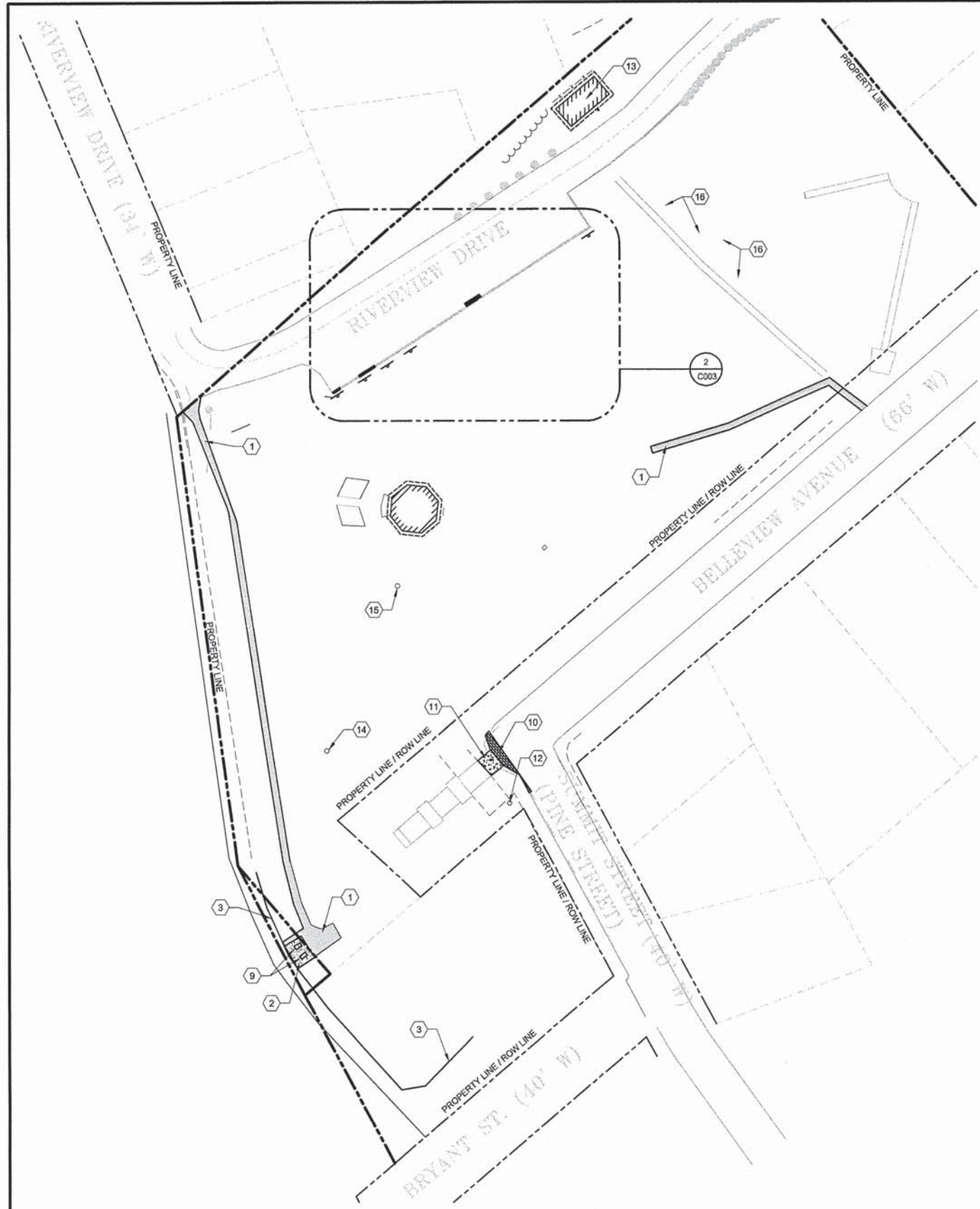
COPYRIGHT
CTA INC.
ALL RIGHTS RESERVED
DRAWN BY: KA
CHECKED BY: MS
DATE: 04-10-2015
CTA # ALTONRIV_SB



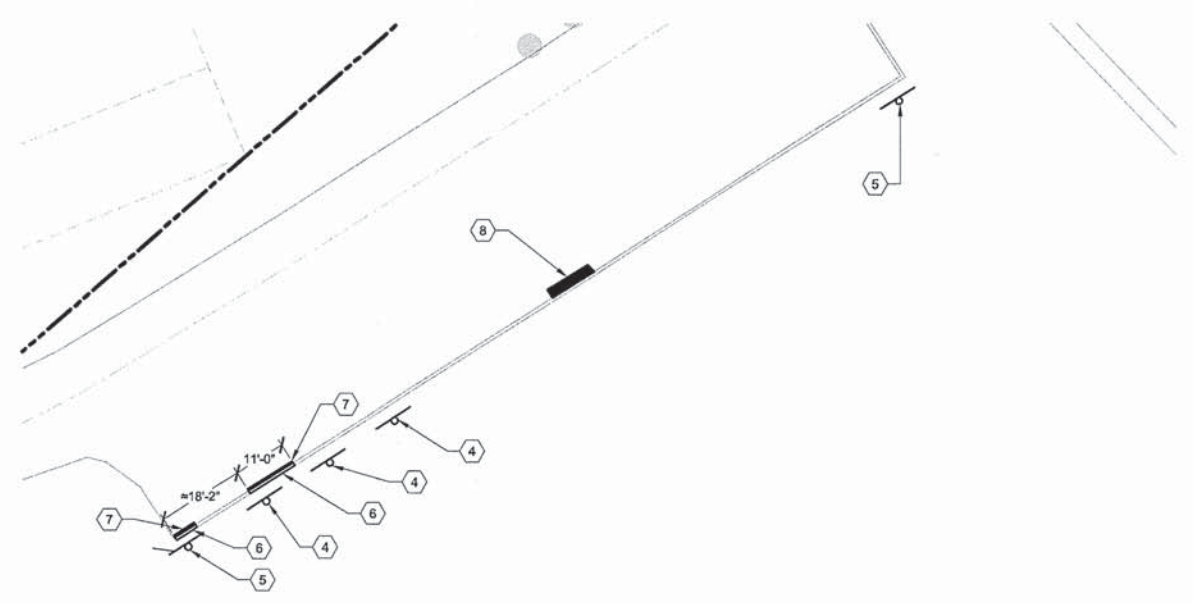
SHEET
C003

DEMOLITION KEY NOTES:

- 1 REMOVE EXISTING ASPHALT PATH = 238.1 SQ YD
- 2 REMOVE EXISTING FLAGSTONE PAVERS = 175.5 SF (CITY TO SALVAGE AND STORE PAVERS OFF-SITE, SEE SPECIAL PROVISIONS)
- 3 REMOVE EXISTING CHAIN LINK FENCE. = 215 LF
- 4 EXISTING ADA PARKING SIGN TO BE REMOVED AND RELOCATED. SEE SHEET C102 FOR NEW LOCATION. = 3 EACH
- 5 EXISTING NO PARKING SIGN TO BE REMOVED AND RELOCATED. SEE SHEET C102 FOR NEW LOCATION. = 2 EACH
- 6 REMOVE EXISTING CURB. SAWCUT AND REMOVE. = 16 LF
- 7 SAWCUT ASPHALT 6" FROM CURB AND REMOVE. = 2.5 SY
- 8 GRIND DOWN EXISTING ASPHALT RAMP FLUSH WITH ASPHALT PARKING LOT. = 1 EACH
- 9 REMOVE EXISTING BENCH. = 2 EACH
- 10 REMOVE EXISTING BRICK PAVERS AS DEEMED NECESSARY FOR NEW CONSTRUCTION. PAVERS TO BE REPLACED, MATCH EXISTING. = 135 SF
- 11 REMOVE EXISTING CONCRETE LANDING. = 114 SF
- 12 REMOVE EXISTING DEAD TREE AT TOP OF EXISTING RETAINING WALL. = 1 UNIT
- 13 REMOVE EXISTING INTERNAL RESTROOM FIXTURES (FAUCET, SINK AND TOILETS) = 6 EACH
- 14 REMOVE EXISTING FLAGPOLE. = 1 EACH
- 15 REMOVE EXISTING DRINKING FOUNTAIN. = 1 EACH. CAP EXISTING WATER SERVICE LINE IF STILL OPERATIONAL.
- 16 REMOVE EXISTING DEAD TREES AND STUMPS. = 4 EACH



1 DEMOLITION PLAN
SCALE: 1" = 40'
0 20' 40' 80'
NORTH









2 DEMOLITION PLAN
SCALE: 1" = 20'
0 10' 20' 40'

NOTE TO CONTRACTOR -
CALL 1-800-424-5555 TWO WORKING
DAYS PRIOR TO ANY EXCAVATION TO
HAVE ALL EXISTING UTILITIES
LOCATED.

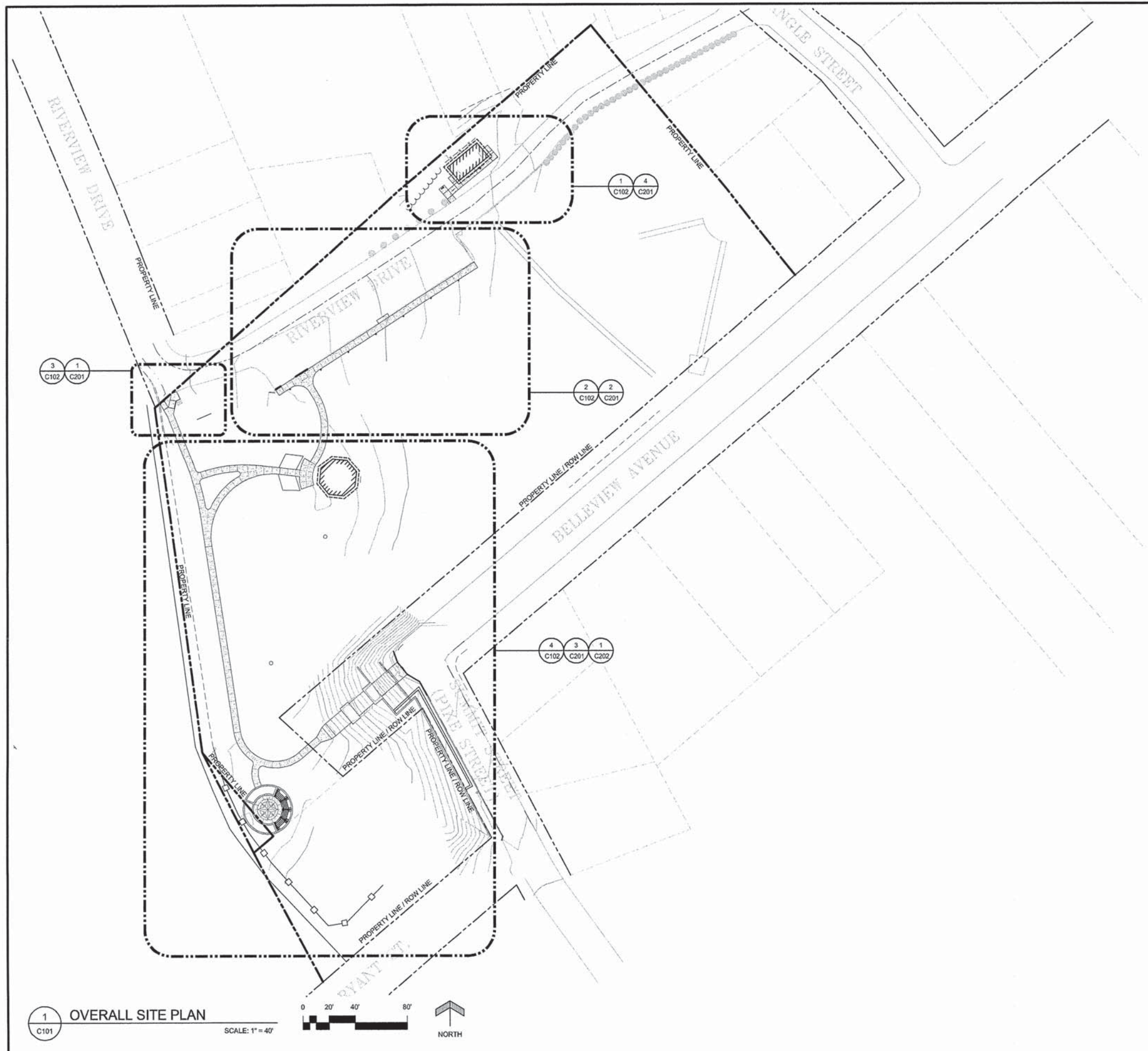
| SECTION | COUNTY | TOTAL SHEETS | SHEET NO. |
|---------------------|--------------------|--------------|-----------|
| 12-00235-00-SW | MADISON | 19 | 5 |
| FEDERAL AID PROJECT | CONTRACT NO. 97591 | | |

SITE LEGEND:

-  PORTLAND CEMENT CONCRETE SIDEWALK, SEE DETAIL
-  LIMESTONE PAVERS, SEE DETAIL
-  CONCRETE CONTROL JOINT
-  CONCRETE EXPANSION JOINT
-  LIMESTONE CURB, SEE DETAIL
-  RETAINING WALL, SEE STRUCTURAL

SITE NOTES:

1. VERIFY EXISTING CONDITIONS AND LOCATE ALL EXISTING UTILITIES INCLUDING ANY THAT MAY NOT BE INDICATED ON THIS PLAN. NOTIFY ENGINEER OF ANY DISCREPANCIES.
2. PROTECT ALL EXISTING IMPROVEMENTS TO REMAIN AND REPAIR BACK TO ORIGINAL CONDITION AT CONTRACTOR'S EXPENSE IF DAMAGE OCCURS RESULTANT FROM CONTRACTOR'S OPERATIONS OR NEGLIGENCE.
3. CONTRACTOR SHALL PROVIDE ALL DEMOLITION REQUIRED FOR NEW CONSTRUCTION WHETHER OR NOT IT IS SPECIFICALLY NOTED.
4. CONTRACTOR TO FIELD VERIFY ALL DIMENSIONS AND EXISTING CONDITIONS PRIOR TO BEGINNING WORK. START OF WORK CONSTITUTES ACCEPTANCE OF CONDITIONS.
5. CHANGES OR DEVIATIONS FROM THE DRAWINGS MADE WITHOUT THE WRITTEN CONSENT OF THE ENGINEER AND/OR AN APPROVED CHANGE ORDER WILL BE CONSIDERED UNAUTHORIZED. COORDINATE NECESSARY MODIFICATIONS WITH ENGINEER PRIOR TO EXECUTING CONSTRUCTION. FOLLOW IDOT SPECIFICATIONS FOR CONTRACT MODIFICATION PROCEDURES.
6. CONTRACTOR IS RESPONSIBLE FOR THE COORDINATION AND COMPLETION OF ALL WORK SHOWN AND SHALL COORDINATE WORK BETWEEN ALL TRADES PRIOR TO BEGINNING WORK.
7. NOTIFY ENGINEER AND OWNER IN WRITING OF ANY EXPECTED DISRUPTIONS IN SERVICE OR CHANGES IN CONSTRUCTION SCHEDULE AND OBTAIN WRITTEN PERMISSION AS SPECIFIED.
8. IT IS THE RESPONSIBILITY OF THE CONTRACTOR TO PROVIDE ALL COMPONENTS AND ACCESSORIES FOR A COMPLETE AND FINISH INSTALLATION FOR PRODUCTS SHOWN ON THE DRAWING SHEETS.



1 OVERALL SITE PLAN
C101

SCALE: 1" = 40'



NOTE TO CONTRACTOR -
CALL 1-800-424-5555 TWO WORKING
DAYS PRIOR TO ANY EXCAVATION TO
HAVE ALL EXISTING UTILITIES
LOCATED.

REVISIONS

MEETING OF THE GREAT RIVERS
SCENIC BYWAY
OVERLOOK RESTORATION
SECTION 12-00235-00-SW

PROPOSED
OVERALL SITE
PLAN

COPYRIGHT
CTA INC.
ALL RIGHTS RESERVED
DRAWN BY: KA
CHECKED BY: MS
DATE: 04-10-2015
CTA # ALTONRIV_SB

CTA
OVERALL
SITE
PLAN

SHEET
C101

| | | | |
|---------------------|--------------------|--------------|-----------|
| SECTION | COUNTY | TOTAL SHEETS | SHEET NO. |
| 12-00235-00-SW | MADISON | 19 | 6 |
| FEDERAL AID PROJECT | CONTRACT NO. 97591 | | |

REVISIONS

MEETING OF THE GREAT RIVERS
SCENIC BYWAY
OVERLOOK RESTORATION
SECTION 12-00235-00-SW

ENLARGED
SITE PLAN

COPYRIGHT
CTA INC.
ALL RIGHTS RESERVED
DRAWN BY: KA
CHECKED BY: MS
DATE: 04-10-2015
CTA # ALTONRIV_SB



SITE PLAN
ENLARGEMENTS

SHEET
C102

SITE LEGEND:

- PORTLAND CEMENT CONCRETE SIDEWALK, SEE DETAIL
- LIMESTONE PAVERS, SEE DETAIL
- CONCRETE CONTROL JOINT
- CONCRETE EXPANSION JOINT
- LIMESTONE CURB, SEE DETAIL
- RETAINING WALL, SEE STRUCTURAL

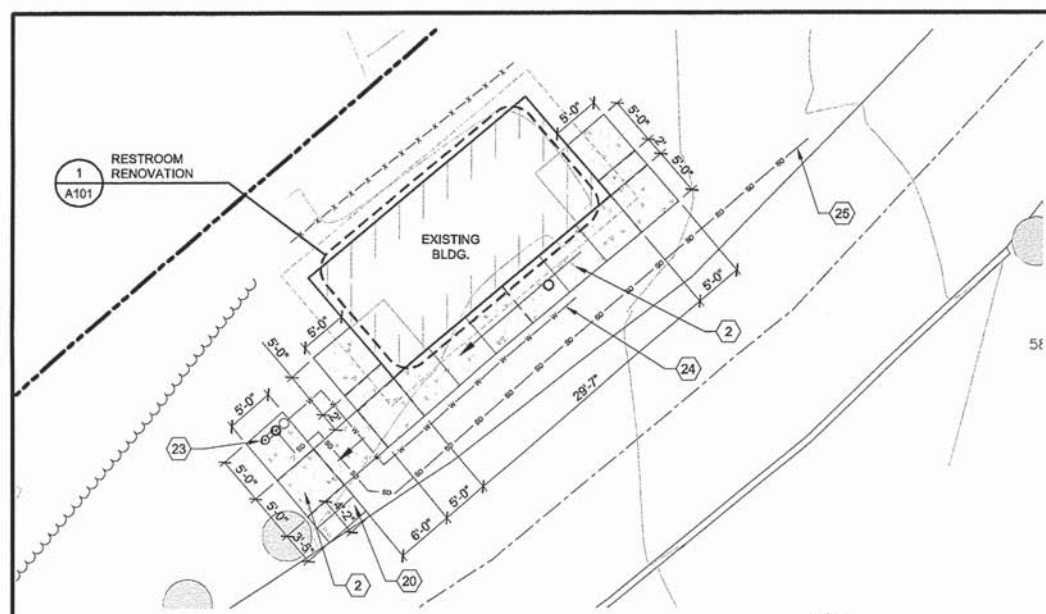
SITE NOTES:

1. VERIFY EXISTING CONDITIONS AND LOCATE ALL EXISTING UTILITIES INCLUDING ANY THAT MAY NOT BE INDICATED ON THIS PLAN. NOTIFY ENGINEER OF ANY DISCREPANCIES.
2. PROTECT ALL EXISTING IMPROVEMENTS TO REMAIN AND REPAIR BACK TO ORIGINAL CONDITION AT CONTRACTOR'S EXPENSE IF DAMAGE OCCURS RESULTANT FROM CONTRACTOR'S OPERATIONS OR NEGLIGENCE.
3. CONTRACTOR SHALL PROVIDE ALL DEMOLITION REQUIRED FOR NEW CONSTRUCTION WHETHER OR NOT IT IS SPECIFICALLY NOTED.
4. CONTRACTOR TO FIELD VERIFY ALL DIMENSIONS AND EXISTING CONDITIONS PRIOR TO BEGINNING WORK. START OF WORK CONSTITUTES ACCEPTANCE OF CONDITIONS.
5. CHANGES OR DEVIATIONS FROM THE DRAWINGS MADE WITHOUT THE WRITTEN CONSENT OF THE ENGINEER AND/OR AN APPROVED CHANGE ORDER WILL BE CONSIDERED UNAUTHORIZED. COORDINATE NECESSARY MODIFICATIONS WITH ENGINEER PRIOR TO EXECUTING CONSTRUCTION. FOLLOW IDOT SPECIFICATIONS FOR CONTRACT MODIFICATION PROCEDURES.
6. CONTRACTOR IS RESPONSIBLE FOR THE COORDINATION AND COMPLETION OF ALL WORK SHOWN AND SHALL COORDINATE WORK BETWEEN ALL TRADES PRIOR TO BEGINNING WORK.
7. NOTIFY ENGINEER AND OWNER IN WRITING OF ANY EXPECTED DISRUPTIONS IN SERVICE OR CHANGES IN CONSTRUCTION SCHEDULE AND OBTAIN WRITTEN PERMISSION AS SPECIFIED.
8. IT IS THE RESPONSIBILITY OF THE CONTRACTOR TO PROVIDE ALL COMPONENTS AND ACCESSORIES FOR A COMPLETE AND FINISH INSTALLATION FOR PRODUCTS SHOWN ON THE DRAWING SHEETS.

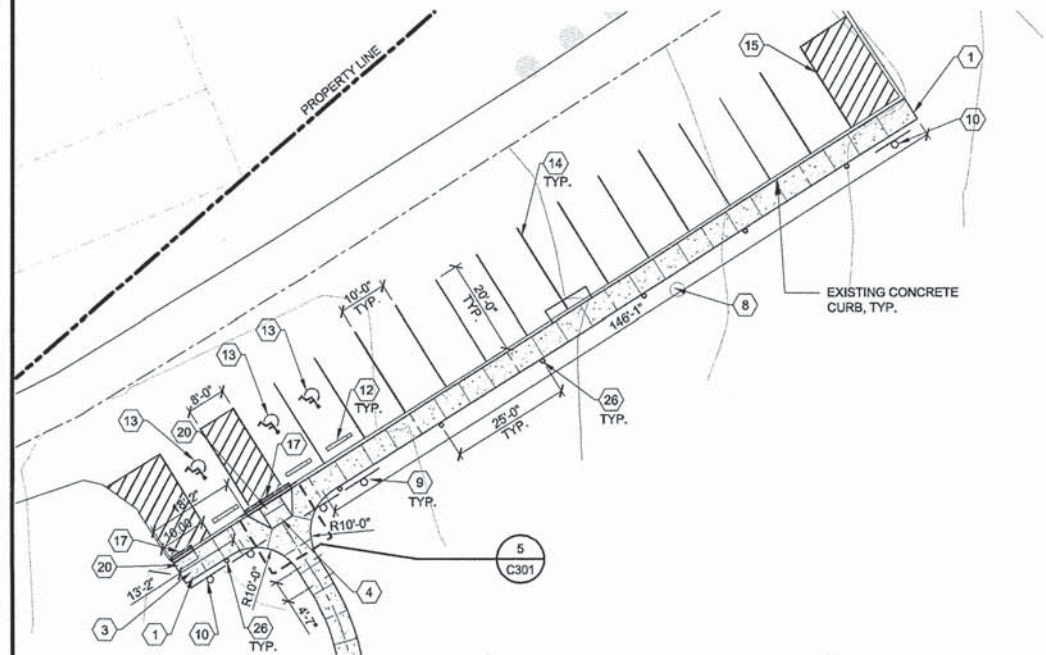
SITE PLAN KEY NOTES:

- 1 CONSTRUCT NEW CONCRETE SIDEWALK. SEE DETAIL 2/C301.
- 2 CONSTRUCT RESTROOM ACCESSIBLE RAMP. SEE DETAIL 4/C301.
- 3 CONSTRUCT ADA RAMP.
- 4 CONSTRUCT ADA RAMP. SEE DETAIL 5/C301.
- 5 CONSTRUCT NEW VERTICAL CURB TRANSITION. SEE DETAIL 1/C301.
- 6 CONSTRUCT PATHWAY ADA RAMP. SEE DETAIL 10/C301.
- 7 CONSTRUCT OVERLOOK PLAZA. SEE SHEET C103.
- 8 EXISTING TREE TO REMAIN.
- 9 INSTALL SALVAGED 'ACCESSIBLE PARKING ONLY' SIGN APPROX. 2'-0" FROM NEW SIDEWALK.
- 10 INSTALL SALVAGED 'NO PARKING' SIGN APPROX 2'-0" FROM NEW SIDEWALK.
- 11 INSTALL NEW WROUGHT IRON FENCE. 215 LF. SEE DETAIL 4/C302.
- 12 INSTALL CONCRETE WHEEL STOP. SEE DETAIL 8/C301.
- 13 PAINT ADA PARKING STALL. SEE DETAIL 3/C301.
- 14 PAINT 4" WHITE PARKING STRIPING.
- 15 PAINT 4" WHITE NO PARKING STRIPING.
- 16 CONSTRUCT CONCRETE LANDING. SEE DETAIL 3/C302.
- 17 EXTEND CONCRETE TO ASPHALT SAWCUT EDGE.
- 18 EXISTING BENCHES TO REMAIN.
- 19 OVERLOOK PLAZA STEEL TRELLIS SYSTEM. SEE STRUCTURAL SHEET.
- 20 DETECTABLE WARNINGS - TRUNCATED DOME
- 21 CONSTRUCT NEW LIMESTONE VERTICAL CURB. SEE DETAIL 7/C301.
- 22 INSTALL NEW FLAGPOLE. SEE DETAIL 2/C303.
- 23 INSTALL NEW DRINKING FOUNTAIN. SEE DETAIL 1/C303.
- 24 INSTALL NEW 1" HDPE WATER SERVICE LINE. 42 LF. CONNECT NEW WATER SERVICE TO EXISTING RESTROOM WATER SERVICE LINE.
- 25 INSTALL NEW 1 1/2" SCH 40 PVC DRAIN FROM DRINKING FOUNTAIN TO DAYLIGHT. 74 LF. SLOPE AT 1/8" PER FOOT.
- 26 INSTALL NEW SOLAR POWERED LED BOLLARDS. 7 TOTAL. SEE DETAIL 5/C302.

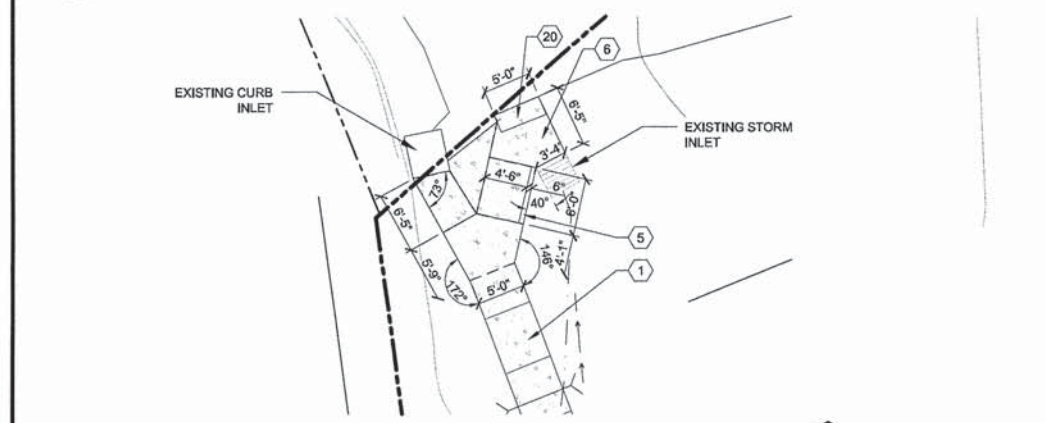
NOTE TO CONTRACTOR -
CALL 1-800-424-5555 TWO WORKING
DAYS PRIOR TO ANY EXCAVATION TO
HAVE ALL EXISTING UTILITIES
LOCATED.



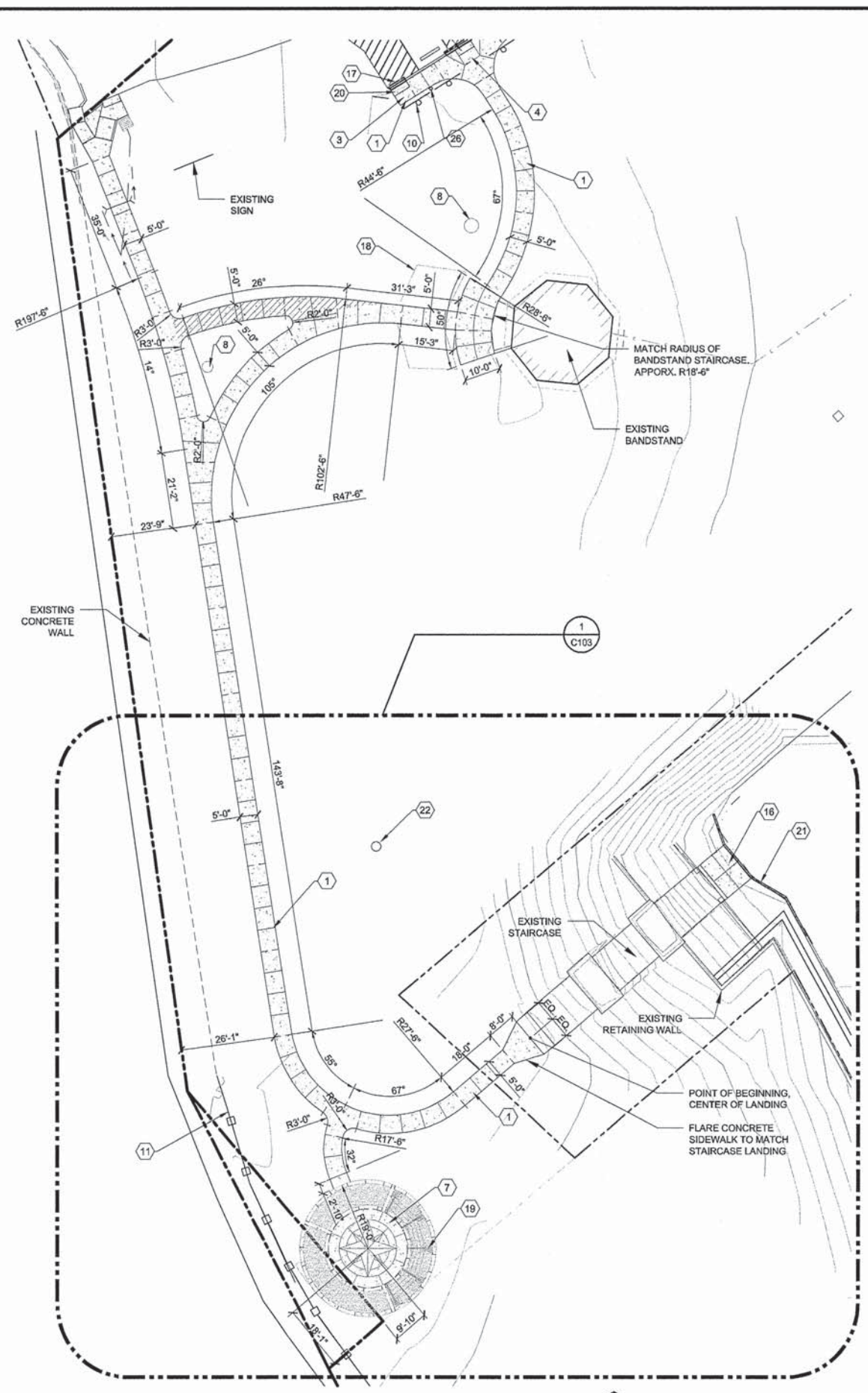
1 RESTROOM FACILITY
SCALE: 1" = 10'
NORTH



2 PARKING SIDEWALK
SCALE: 1" = 20'
NORTH



3 PATHWAY ADA RAMP
SCALE: 1" = 10'
NORTH



4 PATHWAY
SCALE: 1" = 20'
NORTH

| | | | |
|---------------------|--------------------|--------------|-----------|
| SECTION | COUNTY | TOTAL SHEETS | SHEET NO. |
| 12-00235-00-SW | MADISON | 19 | 7 |
| FEDERAL AID PROJECT | CONTRACT NO. 97591 | | |

SITE LEGEND:

-  PORTLAND CEMENT CONCRETE SIDEWALK, SEE DETAIL
-  LIMESTONE PAVERS, SEE DETAIL
-  CONCRETE CONTROL JOINT
-  CONCRETE EXPANSION JOINT
-  LIMESTONE CURB, SEE DETAIL
-  RETAINING WALL, SEE STRUCTURAL

SITE NOTES:

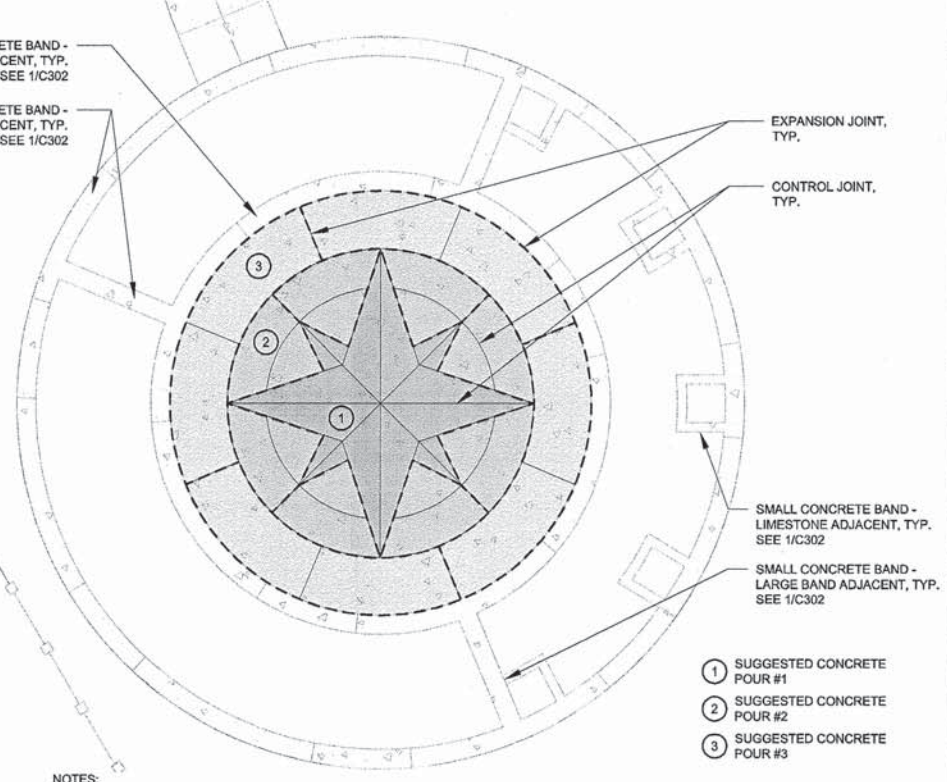
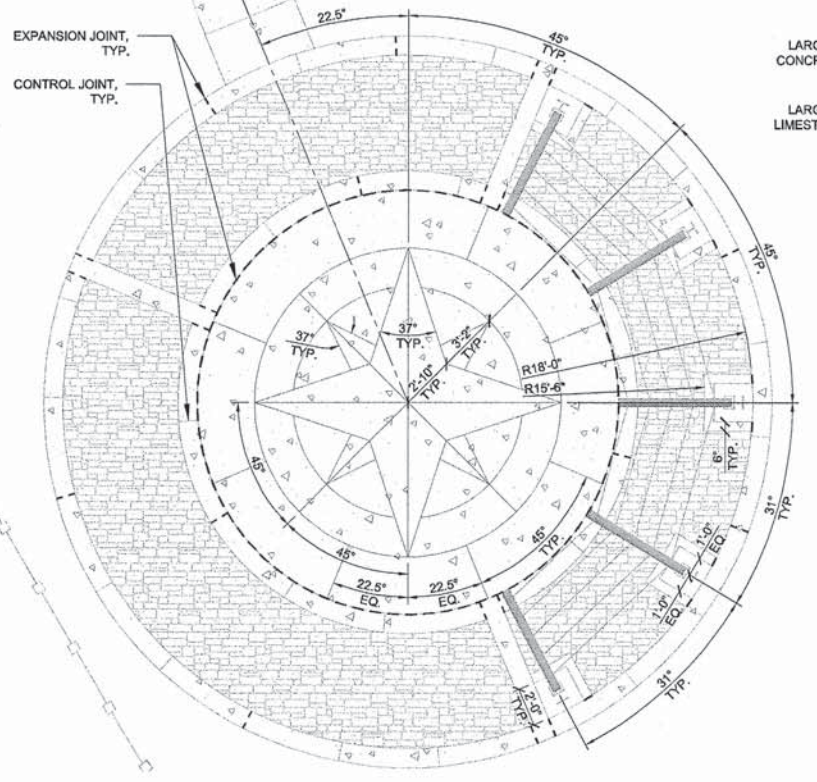
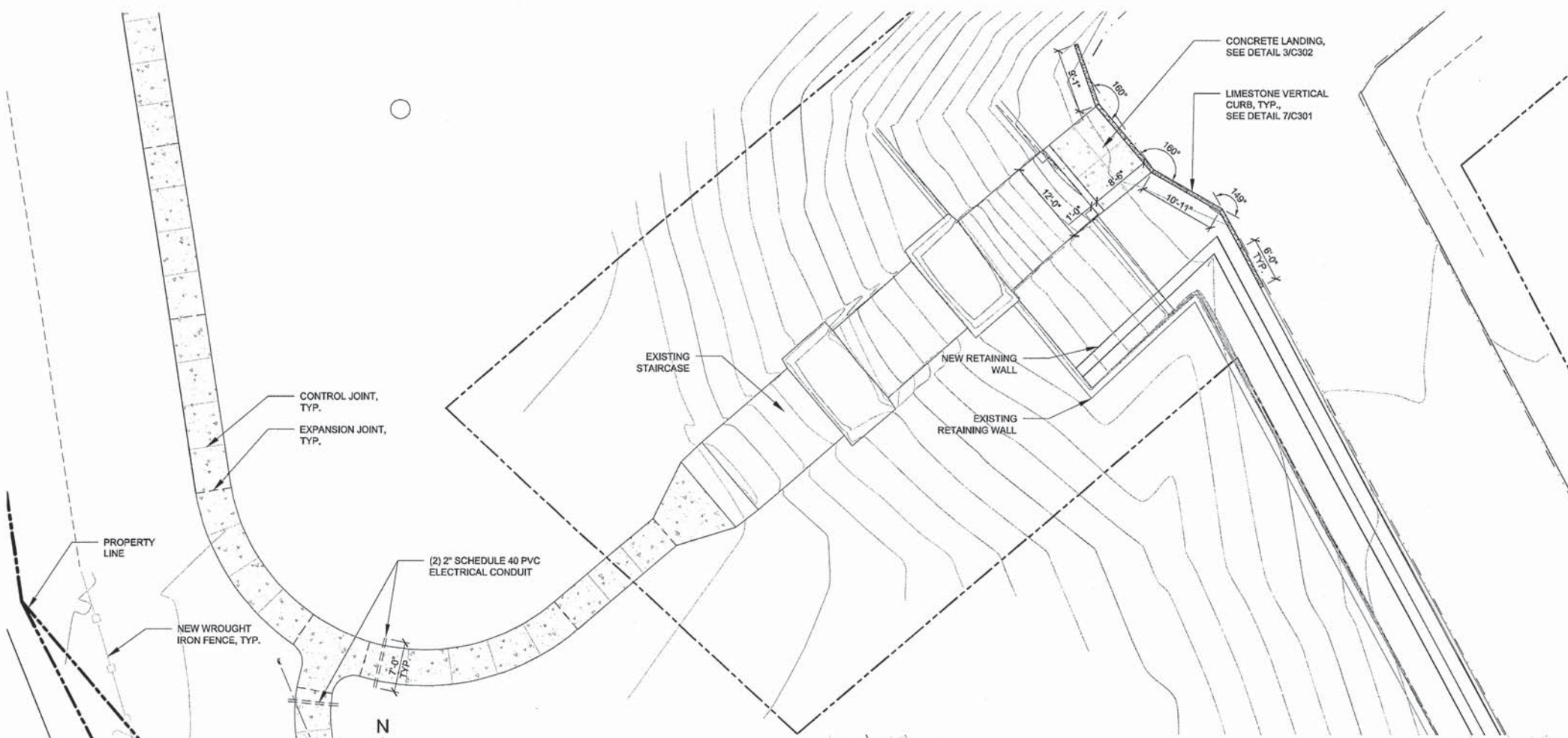
1. VERIFY EXISTING CONDITIONS AND LOCATE ALL EXISTING UTILITIES INCLUDING ANY THAT MAY NOT BE INDICATED ON THIS PLAN. NOTIFY ENGINEER OF ANY DISCREPANCIES.
2. PROTECT ALL EXISTING IMPROVEMENTS TO REMAIN AND REPAIR BACK TO ORIGINAL CONDITION AT CONTRACTOR'S EXPENSE IF DAMAGE OCCURS RESULTANT FROM CONTRACTOR'S OPERATIONS OR NEGLIGENCE.
3. CONTRACTOR SHALL PROVIDE ALL DEMOLITION REQUIRED FOR NEW CONSTRUCTION WHETHER OR NOT IT IS SPECIFICALLY NOTED.
4. CONTRACTOR TO FIELD VERIFY ALL DIMENSIONS AND EXISTING CONDITIONS PRIOR TO BEGINNING WORK, START OF WORK CONSTITUTES ACCEPTANCE OF CONDITIONS.
5. CHANGES OR DEVIATIONS FROM THE DRAWINGS MADE WITHOUT THE WRITTEN CONSENT OF THE ENGINEER AND/OR AN APPROVED CHANGE ORDER WILL BE CONSIDERED UNAUTHORIZED. COORDINATE NECESSARY MODIFICATIONS WITH ENGINEER PRIOR TO EXECUTING CONSTRUCTION. FOLLOW IDOT SPECIFICATIONS FOR CONTRACT MODIFICATION PROCEDURES.
6. CONTRACTOR IS RESPONSIBLE FOR THE COORDINATION AND COMPLETION OF ALL WORK SHOWN AND SHALL COORDINATE WORK BETWEEN ALL TRADES PRIOR TO BEGINNING WORK.
7. NOTIFY ENGINEER AND OWNER IN WRITING OF ANY EXPECTED DISRUPTIONS IN SERVICE OR CHANGES IN CONSTRUCTION SCHEDULE AND OBTAIN WRITTEN PERMISSION AS SPECIFIED.
8. IT IS THE RESPONSIBILITY OF THE CONTRACTOR TO PROVIDE ALL COMPONENTS AND ACCESSORIES FOR A COMPLETE AND FINISH INSTALLATION FOR PRODUCTS SHOWN ON THE DRAWING SHEETS.

REVISIONS
 MEETING OF THE GREAT RIVERS
 SCENIC BYWAY
 OVERLOOK RESTORATION
 SECTION 12-00235-00-SW

ENLARGED
 SITE PLAN

COPYRIGHT
CTA INC.
 ALL RIGHTS RESERVED
 DRAWN BY: KA
 CHECKED BY: MS
 DATE: 04-10-2015
 CTA# ALTONRIV_SB

CTA
 OVERLOOK
 ENLARGEMENT
 SHEET
C103



NOTES:
 1. CONCRETE POURS SHOWN ARE SUGGESTED. CONTRACTOR TO SUBMIT SHOP DRAWING ON PLANNED POUR, CONTROL AND EXPANSION JOINTS.

1 OVERLOOK ENLARGEMENT
 SCALE: 1" = 10'



2 PLAZA LAYOUT
 SCALE: 1" = 5'



3 CONCRETE POURS
 SCALE: 1" = 5'



| | | | |
|---------------------|---------|--------------------|-----------|
| SECTION | COUNTY | TOTAL SHEETS | SHEET NO. |
| 12-00235-00-SW | MADISON | 19 | 8 |
| FEDERAL AID PROJECT | | CONTRACT NO. 97591 | |

REVISIONS

MEETING OF THE GREAT RIVERS
SCENIC BYWAY
OVERLOOK RESTORATION
SECTION 12-00235-00-SW

EROSION
CONTROL PLAN

COPYRIGHT
CTA INC.
ALL RIGHTS RESERVED
DRAWN BY: KA
CHECKED BY: MS
DATE: 04-10-2015
CTA # ALTONRV_SB

CTA
EROSION
CONTROL
PLAN

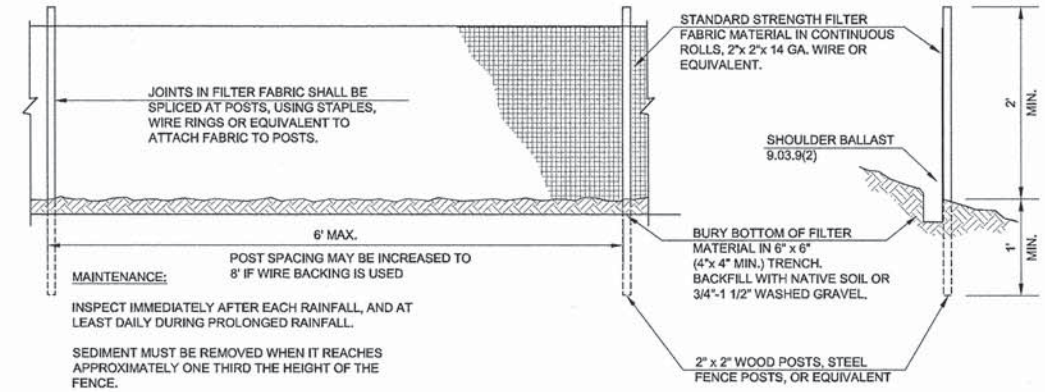
SHEET
C104

SITE LEGEND:

-  PORTLAND CEMENT CONCRETE SIDEWALK, SEE DETAIL
-  LIMESTONE PAVERS, SEE DETAIL
-  CONCRETE CONTROL JOINT
-  CONCRETE EXPANSION JOINT
-  LIMESTONE CURB, SEE DETAIL
-  RETAINING WALL, SEE STRUCTURAL

SITE NOTES:

1. VERIFY EXISTING CONDITIONS AND LOCATE ALL EXISTING UTILITIES INCLUDING ANY THAT MAY NOT BE INDICATED ON THIS PLAN. NOTIFY ENGINEER OF ANY DISCREPANCIES.
2. PROTECT ALL EXISTING IMPROVEMENTS TO REMAIN AND REPAIR BACK TO ORIGINAL CONDITION AT CONTRACTOR'S EXPENSE IF DAMAGE OCCURS RESULTANT FROM CONTRACTOR'S OPERATIONS OR NEGLIGENCE.
3. CONTRACTOR SHALL PROVIDE ALL DEMOLITION REQUIRED FOR NEW CONSTRUCTION WHETHER OR NOT IT IS SPECIFICALLY NOTED.
4. CONTRACTOR TO FIELD VERIFY ALL DIMENSIONS AND EXISTING CONDITIONS PRIOR TO BEGINNING WORK. START OF WORK CONSTITUTES ACCEPTANCE OF CONDITIONS.
5. CHANGES OR DEVIATIONS FROM THE DRAWINGS MADE WITHOUT THE WRITTEN CONSENT OF THE ENGINEER AND/OR AN APPROVED CHANGE ORDER WILL BE CONSIDERED UNAUTHORIZED. COORDINATE NECESSARY MODIFICATIONS WITH ENGINEER PRIOR TO EXECUTING CONSTRUCTION. FOLLOW IDOT SPECIFICATIONS FOR CONTRACT MODIFICATION PROCEDURES.
6. CONTRACTOR IS RESPONSIBLE FOR THE COORDINATION AND COMPLETION OF ALL WORK SHOWN AND SHALL COORDINATE WORK BETWEEN ALL TRADES PRIOR TO BEGINNING WORK.
7. NOTIFY ENGINEER AND OWNER IN WRITING OF ANY EXPECTED DISRUPTIONS IN SERVICE OR CHANGES IN CONSTRUCTION SCHEDULE AND OBTAIN WRITTEN PERMISSION AS SPECIFIED.
8. IT IS THE RESPONSIBILITY OF THE CONTRACTOR TO PROVIDE ALL COMPONENTS AND ACCESSORIES FOR A COMPLETE AND FINISH INSTALLATION FOR PRODUCTS SHOWN ON THE DRAWING SHEETS.



2 SILT FENCE
C104

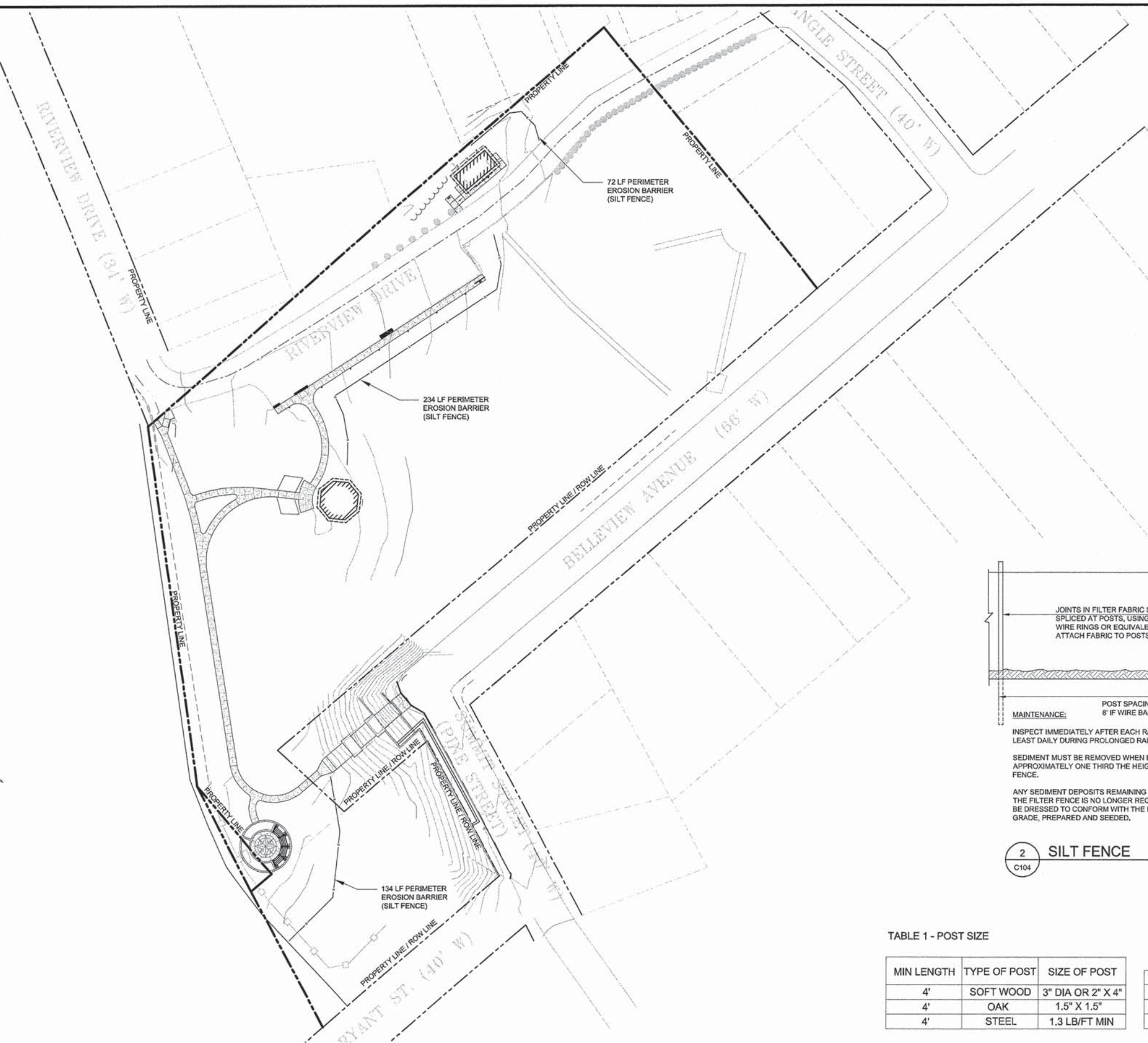
SCALE: NTS

TABLE 1 - POST SIZE

| MIN LENGTH | TYPE OF POST | SIZE OF POST |
|------------|--------------|-------------------|
| 4' | SOFT WOOD | 3" DIA OR 2" X 4" |
| 4' | OAK | 1.5" X 1.5" |
| 4' | STEEL | 1.3 LB/FT MIN |

TABLE 2 - FASTENERS FOR WOOD POSTS

| TYPE | GAUGE | CROWN | LEGS | STAPLE/POST |
|--------------|--------|-----------|--------------|-------------|
| WIRE STAPLES | 17 MIN | 3/4" WIDE | 1/2" LONG | 5 MIN |
| TYPE | GAUGE | LENGTH | BUTTON HEADS | NAIL/POST |
| NAILS | 14 MIN | 1" | 3/4" | " |



1 EROSION CONTROL PLAN
C104

SCALE: 1" = 40'



| SECTION | COUNTY | TOTAL SHEETS | SHEET NO. |
|---------------------|--------------------|--------------|-----------|
| 12-00235-00-SW | MADISON | 19 | 9 |
| FEDERAL AID PROJECT | CONTRACT NO. 97591 | | |

REVISIONS

MEETING OF THE GREAT RIVERS
SCENIC BYWAY
OVERLOOK RESTORATION
SECTION 12-00235-00-SW

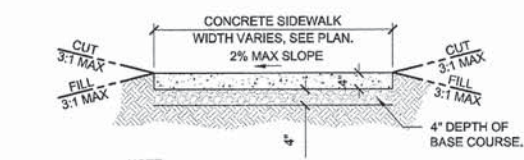
ENLARGED
GRADING &
DRAINAGE
PLAN

COPYRIGHT
CTA INC.
ALL RIGHTS RESERVED
DRAWN BY: KA
CHECKED BY: MS
DATE: 04-10-2015
CTA # ALTONRIV_SB

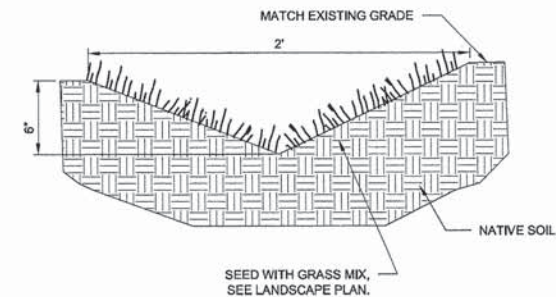
CTA
ENLARGED
GRADING &
DRAINAGE
PLAN

SHEET
C201

- DRAINAGE AND GRADING LEGEND**
- TC 100 PROPOSED 'TOP OF CONCRETE' ELEV.
 - MEG TBC 100 PROPOSED 'MATCH EXISTING TOP BACK OF CURB' ELEV.
 - MEG TA 100 PROPOSED 'MATCH EXISTING TOP OF ASPHALT' ELEV.
 - MEG 100 PROPOSED 'MATCH EXISTING GRADE' ELEV.
 - 0.3% PROPOSED SLOPE (FOR REFERENCE ONLY)
 - PROPOSED CONTOUR
 - - - EXISTING CONTOUR
- NOTES**
- ELEVATION SHOWN ARE BASED ON TOPOGRAPHIC CONTOURS FROM HENEGHAN AND ASSOCIATES, P.C. EXISTING AND PROPOSED ELEVATIONS TO BE VERIFIED BEFORE FINAL CONFIGURATION AND CONSTRUCTION.
 - THE EXISTING SOIL FOR THE AREA OF THE PROPOSED SIDEWALK AND PLAZA SHALL BE REMOVED TO A DEPTH 8 INCHES AND PLACED IN AREAS REQUIRING TOPSOIL. THE AMOUNT OF TOPSOIL EXCAVATION AND PLACEMENT IS 56 CU. YDS.

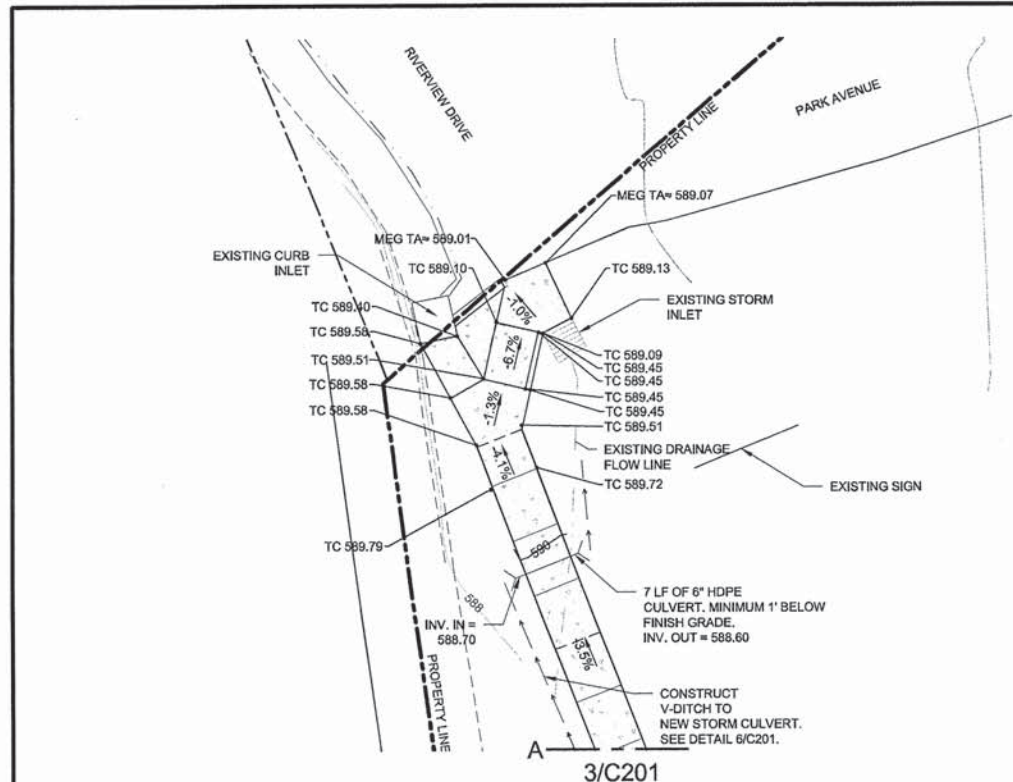


5 CUT-FILL SECTION
NOT TO SCALE

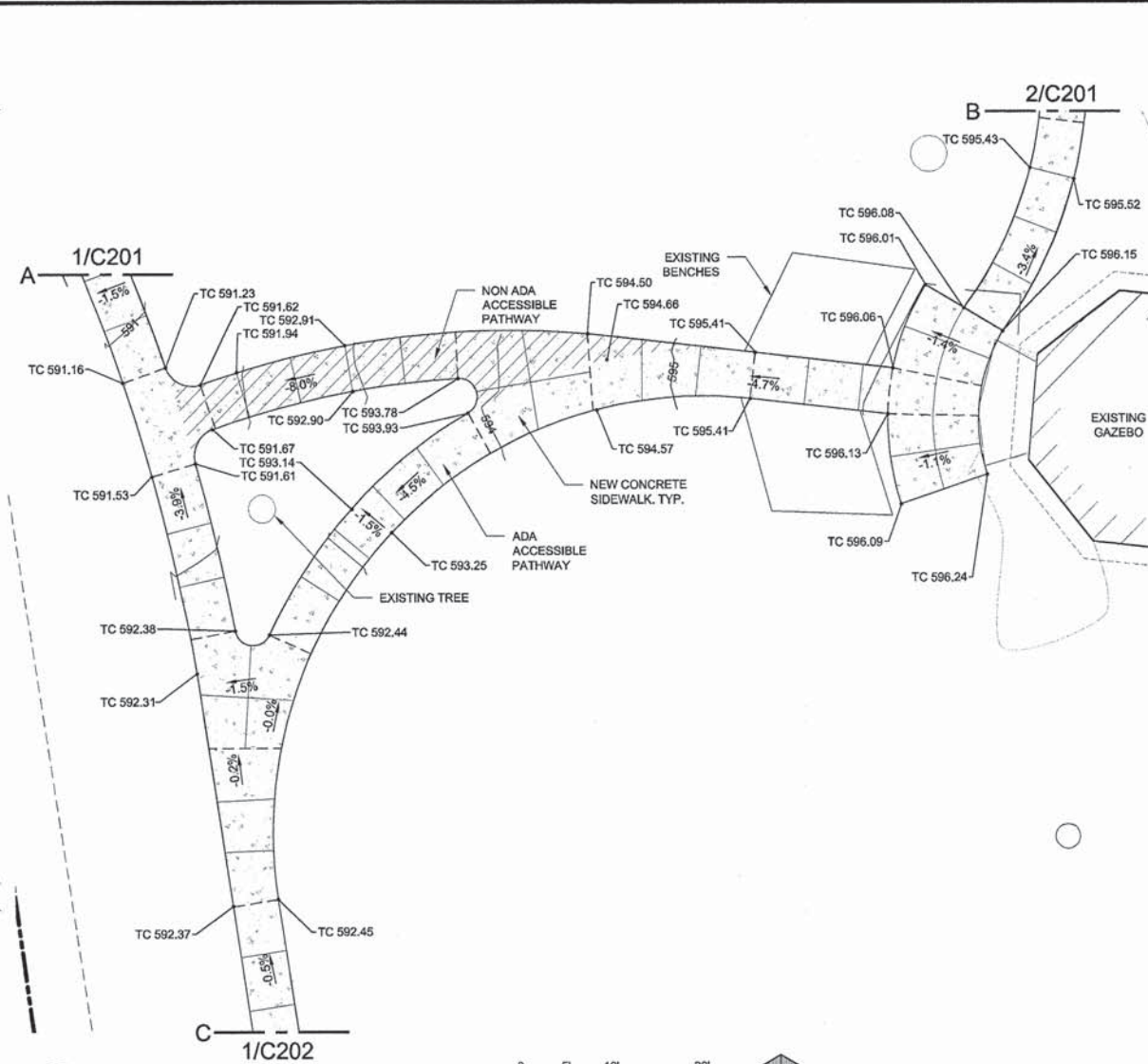


6 V-DITCH
NOT TO SCALE

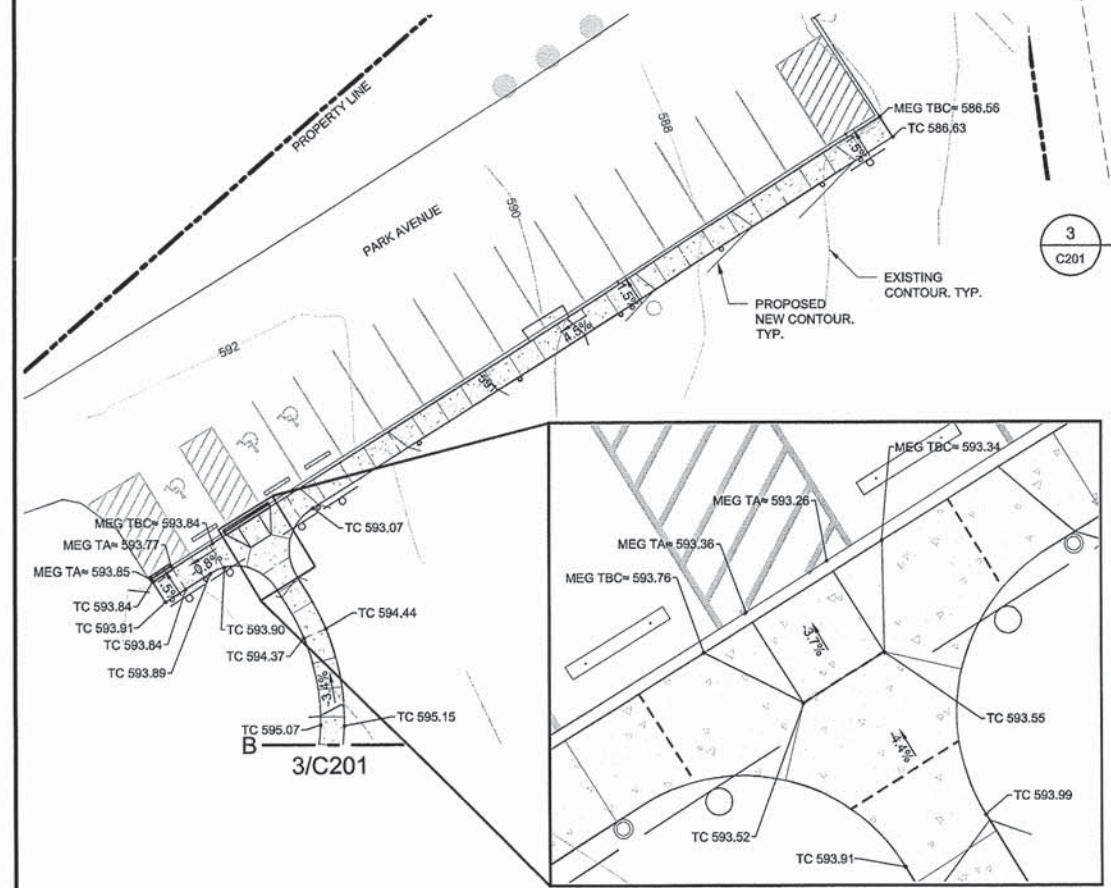
NOTE TO CONTRACTOR -
CALL 1-800-424-5555 TWO WORKING
DAYS PRIOR TO ANY EXCAVATION TO
HAVE ALL EXISTING UTILITIES
LOCATED.



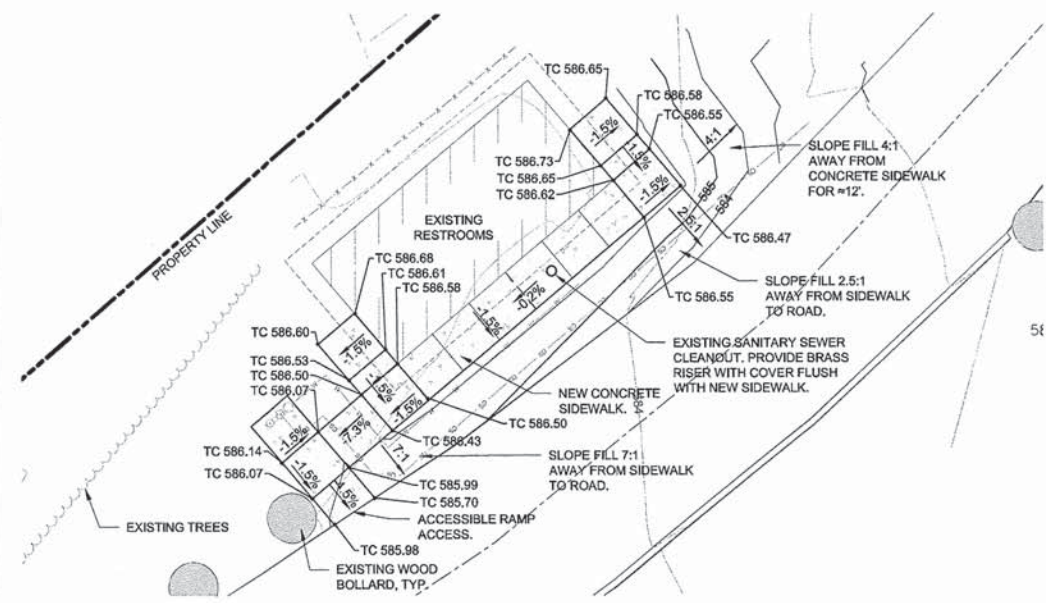
1 ADA PATHWAY RAMP
SCALE: 1" = 10'



3 PATHWAY
SCALE: 1" = 10'



2 PARKING SIDEWALK
SCALE: 1" = 20'



4 RESTROOM FACILITY
SCALE: 1" = 10'

| | | | |
|---------------------|--------------------|--------------|-----------|
| SECTION | COUNTY | TOTAL SHEETS | SHEET NO. |
| 12-00235-00-SW | MADISON | 19 | 10 |
| FEDERAL AID PROJECT | CONTRACT NO. 97591 | | |

REVISIONS

MEETING OF THE GREAT RIVERS
SCENIC BYWAY
OVERLOOK RESTORATION
SECTION 12-00235-00-SW

ENLARGED
GRADING &
DRAINAGE
PLAN

COPYRIGHT
CTA INC.
ALL RIGHTS RESERVED
DRAWN BY: KA
CHECKED BY: MS
DATE: 04-10-2015
CTA # ALTONRIV_SB

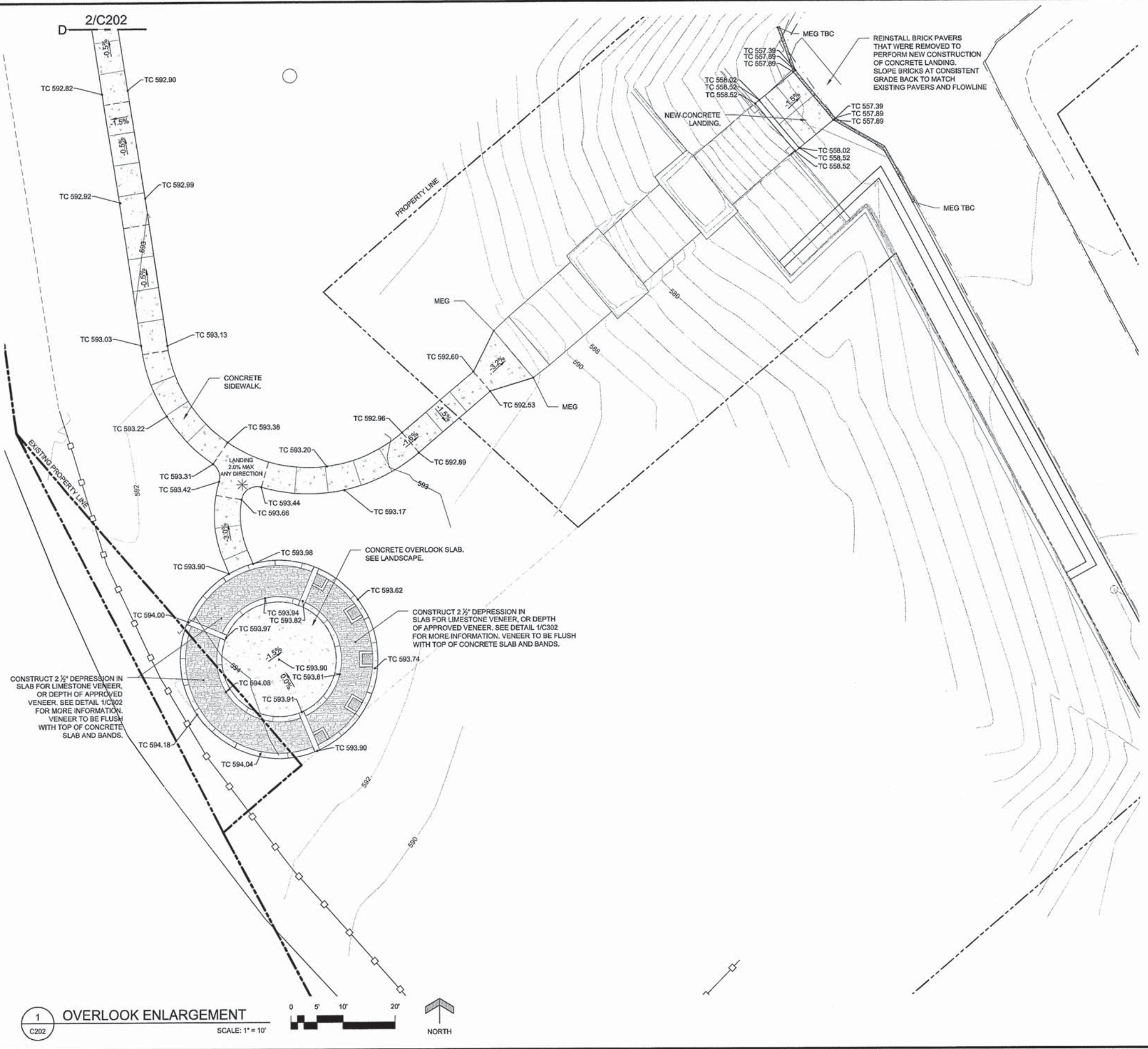
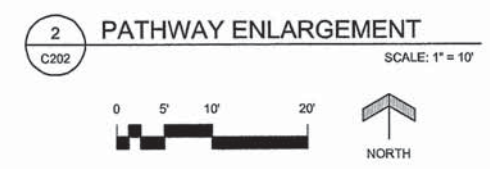
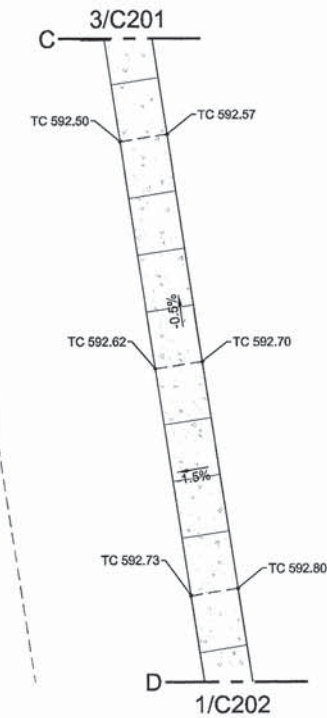


SHEET
C202

DRAINAGE AND GRADING LEGEND

| | |
|-------------|--|
| TC 100 | PROPOSED 'TOP OF CONCRETE' ELEV. |
| MEG TBC 100 | PROPOSED 'MATCH EXISTING TOP BACK OF CURB' ELEV. |
| MEG 100 | PROPOSED 'MATCH EXISTING GRADE' ELEV. |
| -0.3% | PROPOSED SLOPE (FOR REFERENCE ONLY) |
| | PROPOSED CONTOUR |
| | EXISTING CONTOUR |

NOTES
ELEVATION SHOWN ARE BASED ON TOPOGRAPHIC CONTOURS FROM HENEHGAN AND ASSOCIATES, P.C. EXISTING AND PROPOSED ELEVATIONS TO BE VERIFIED BEFORE FINAL CONFIGURATION AND CONSTRUCTION.



1 OVERLOOK ENLARGEMENT
SCALE: 1" = 10'



NOTE TO CONTRACTOR -
CALL 1-800-424-5555 TWO WORKING
DAYS PRIOR TO ANY EXCAVATION TO
HAVE ALL EXISTING UTILITIES
LOCATED.

| | | | |
|---------------------|--------------------|--------------|-----------|
| SECTION | COUNTY | TOTAL SHEETS | SHEET NO. |
| 12-00235-00-SW | MADISON | 19 | 11 |
| FEDERAL AID PROJECT | CONTRACT NO. 97591 | | |

| |
|-----------|
| REVISIONS |
|-----------|

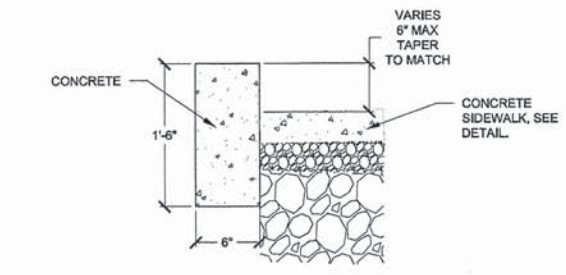
MEETING OF THE GREAT RIVERS
SCENIC BYWAY
OVERLOOK RESTORATION
SECTION 12-00235-00-SW

SITE
DETAILS

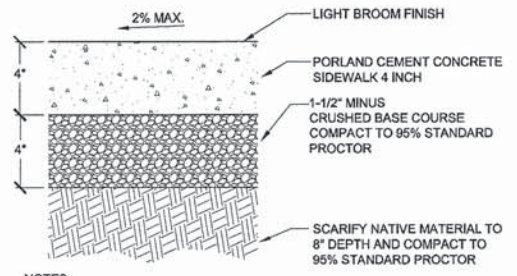
COPYRIGHT
CTA INC.
ALL RIGHTS RESERVED
DRAWN BY: KA
CHECKED BY: MS
DATE: 04-10-2015
CTA # ALTONRV_SB

CTA
CIVIL
DETAILS

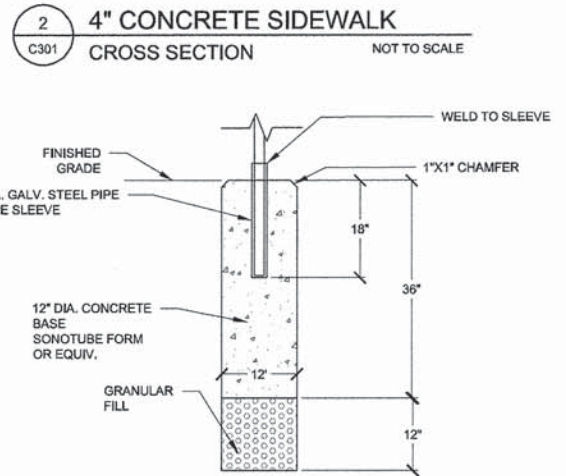
SHEET
C301



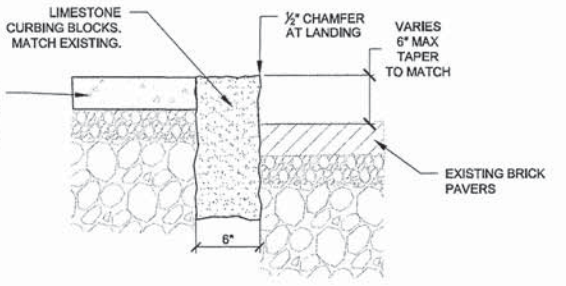
1 VERTICAL CURB TRANSITION
C301 NOT TO SCALE



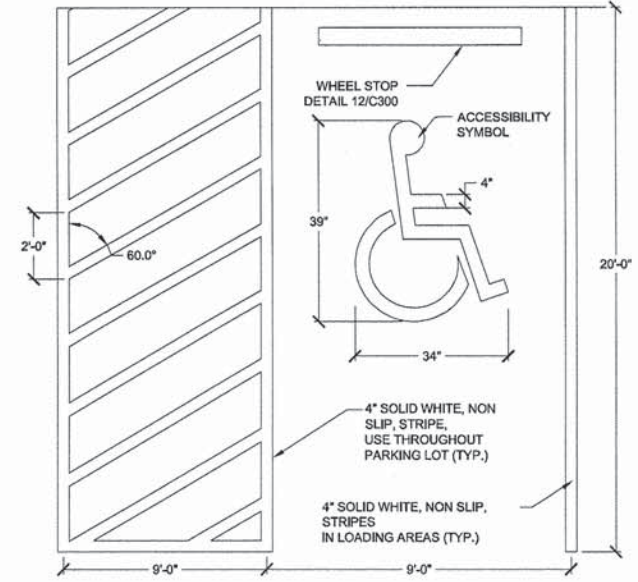
2 4" CONCRETE SIDEWALK CROSS SECTION
C301 NOT TO SCALE



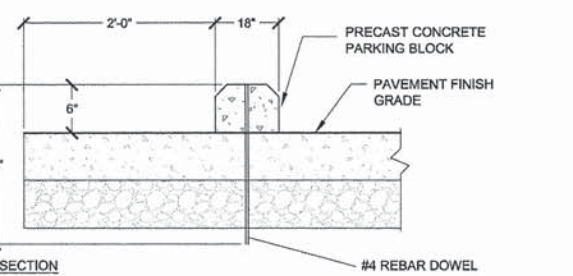
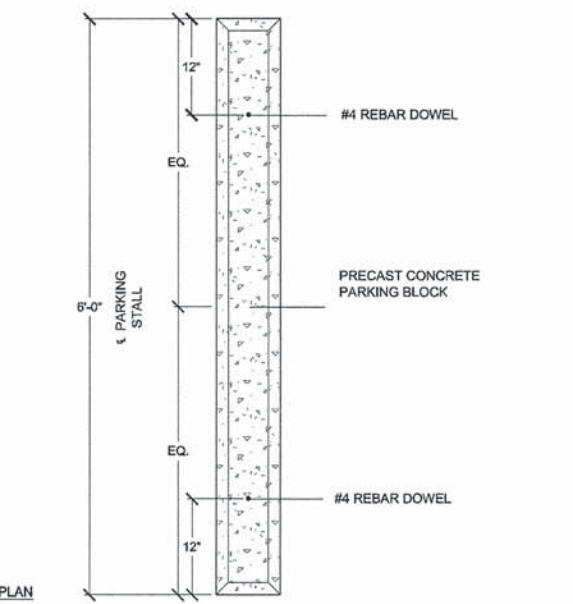
6 SIGN POST DETAIL
C400 NOT TO SCALE



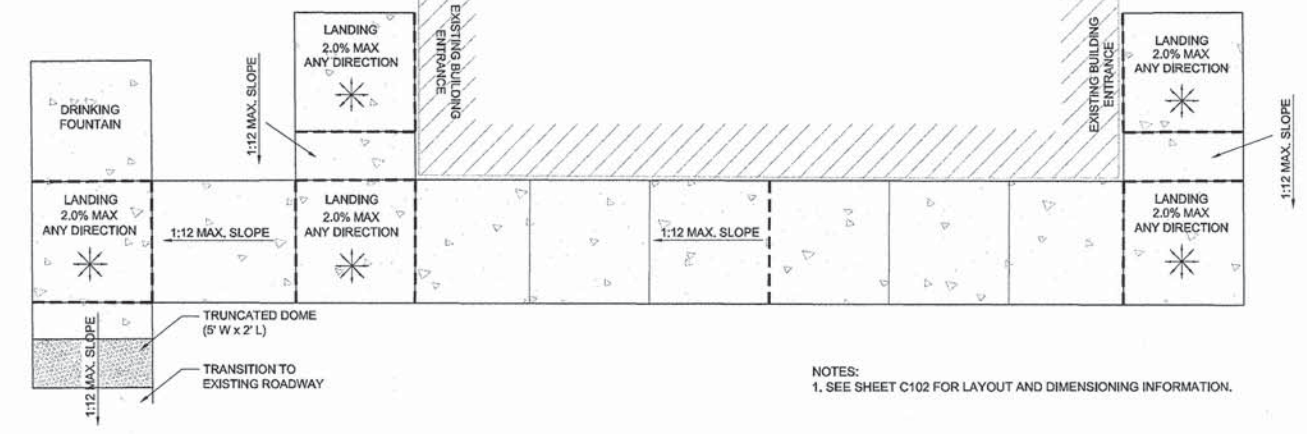
7 LIMESTONE VERTICAL CURB
C301 NOT TO SCALE



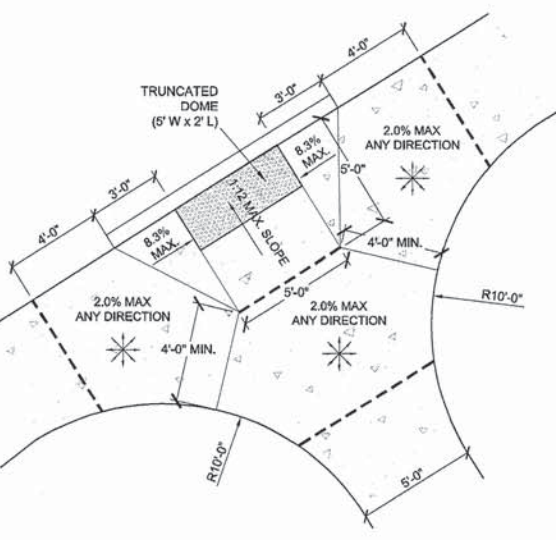
3 ADA PARKING STRIPING
C301 NOT TO SCALE



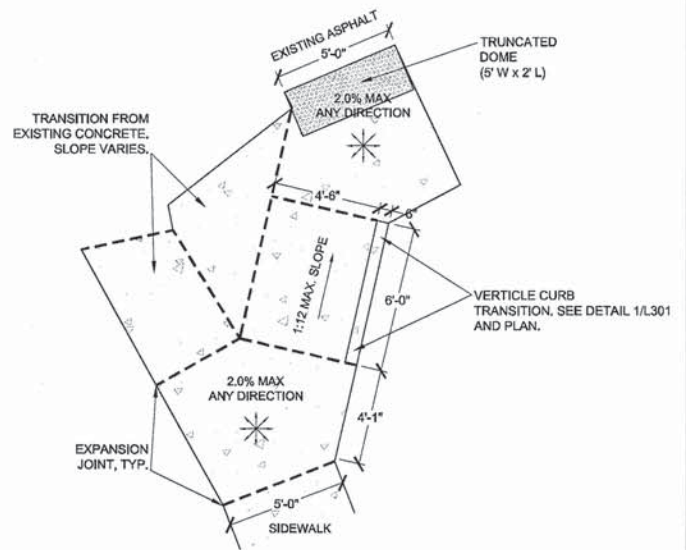
8 WHEEL STOP
C301 NOT TO SCALE



4 RESTROOM ACCESSIBLE RAMP
C301 SCALE: 3" = 1'-0"



5 PARKING ADA RAMP
C301 SCALE: 3" = 1'-0"



10 PATHWAY ADA RAMP
C301 SCALE: 3" = 1'-0"

NOTES:
1. SEE SHEET C102 FOR LAYOUT AND DIMENSIONING INFORMATION.

NOTES:
1. SEE SHEET C102 FOR LAYOUT AND DIMENSIONING INFORMATION.

NOTES:
1. SEE SHEET C102 FOR LAYOUT AND DIMENSIONING INFORMATION.

NOTES:
1. 2% CROSS SLOPE (1/8"/FT) UNLESS OTHERWISE SPECIFIED.
2. EXPANSION JOINTS EVERY 24' OR AS SHOWN.
3. CONTROL JOINTS EVERY 6' OR AS SHOWN.

| | | | |
|---------------------|---------|--------------------|-----------|
| SECTION | COUNTY | TOTAL SHEETS | SHEET NO. |
| 12-00235-00-SW | MADISON | 19 | 12 |
| FEDERAL AID PROJECT | | CONTRACT NO. 97591 | |

REVISIONS

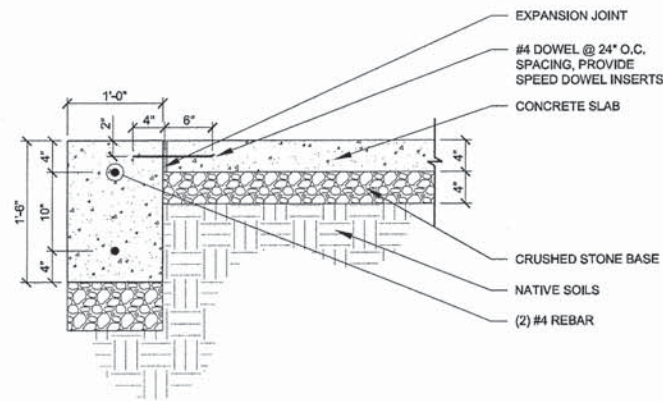
MEETING OF THE GREAT RIVERS
SCENIC BYWAY
OVERLOOK RESTORATION
SECTION 12-00235-00-SW

SITE
DETAILS

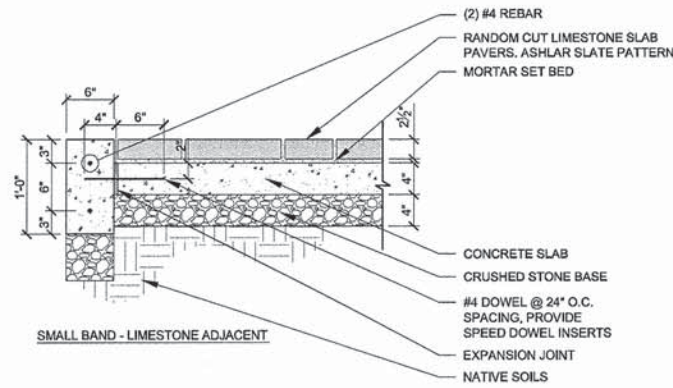
COPYRIGHT
CTA INC.
ALL RIGHTS RESERVED
DRAWN BY: KA
CHECKED BY: MS
DATE: 04-10-2015
CTA # ALTONRIV_SB

CTA
CIVIL
DETAILS

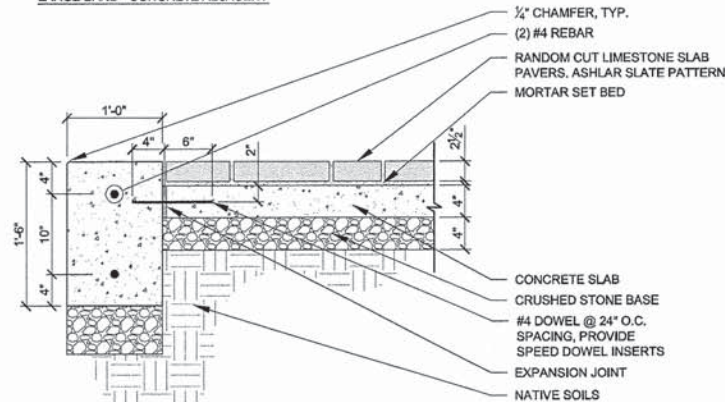
SHEET
C302



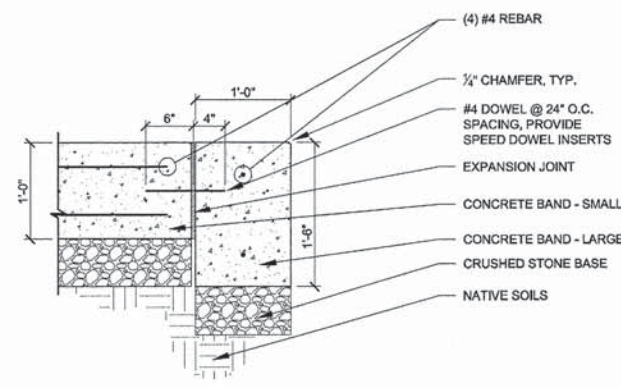
LARGE BAND - CONCRETE ADJACENT



SMALL BAND - LIMESTONE ADJACENT



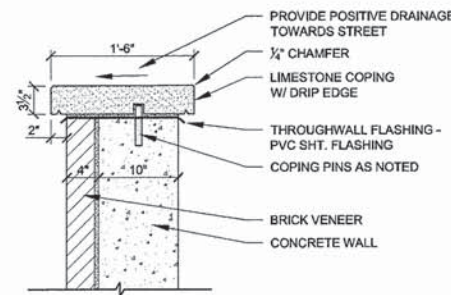
LARGE BAND - LIMESTONE ADJACENT



SMALL BAND - LARGE BAND ADJACENT

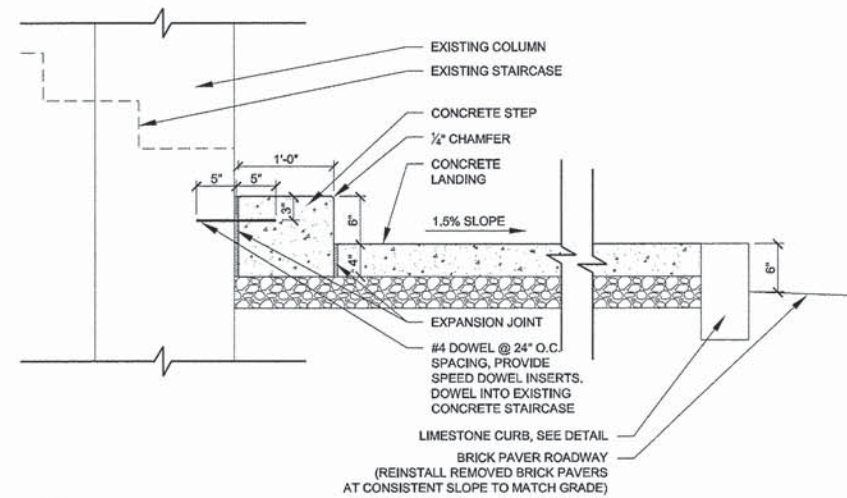
- NOTES:
- SEE PLANS FOR EXPANSION AND TOOLED CONTROL JOINT LAYOUT.
 - PROVIDE SHOP DRAWING PLAN OF CONCRETE POUR SCHEDULE, AS WELL AS PLANS FOR REINFORCING, DOWELS EXPANSION AND CONTROL JOINTS.
 - PROVIDE 1/2" CHAMFER ON ALL CONCRETE BANDS ADJACENT TO PLANTING AREAS AND LAWN.

1 CONCRETE BAND
C302 CONCRETE CURB (SPECIAL) SCALE = 1"=1'-0"

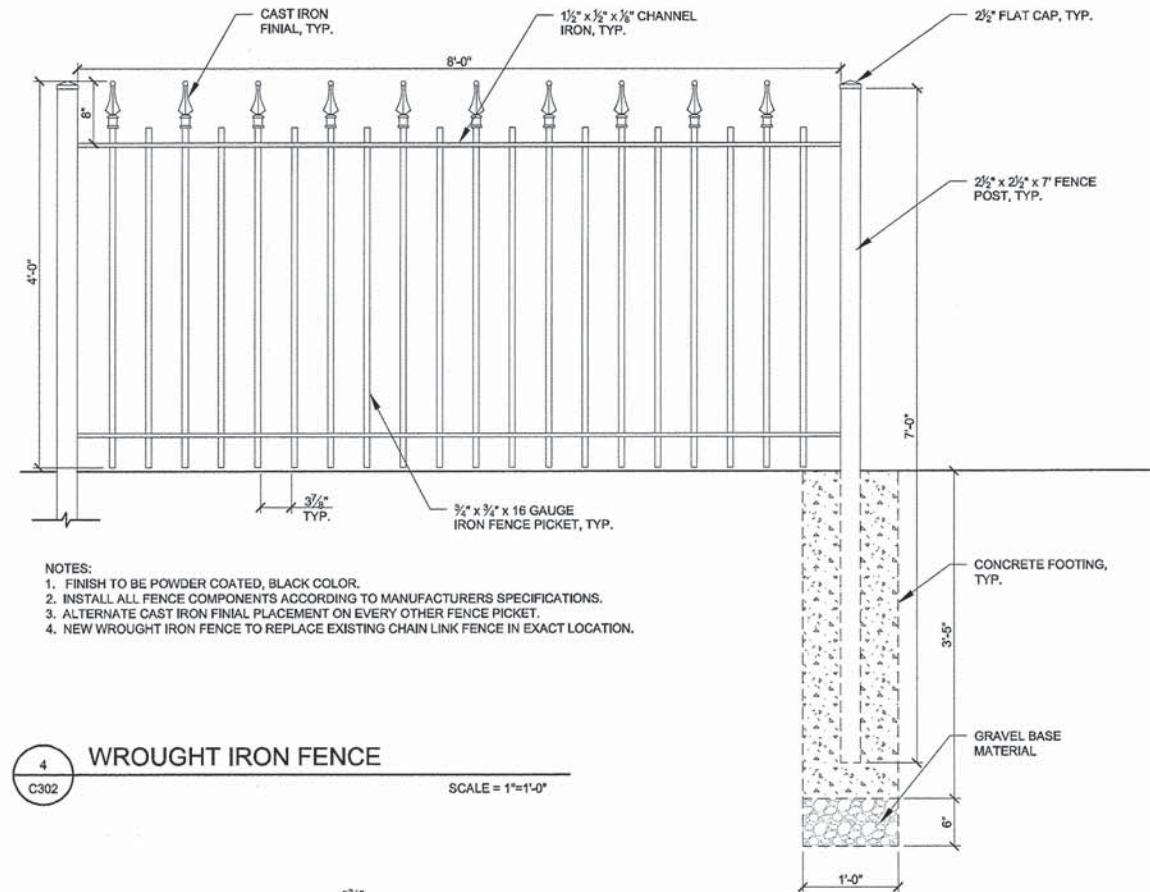


- NOTES:
- CONTRACTOR TO SUBMIT SHOP DRAWING ON RETAINING WALL.
 - INSTALL SST COPING PINS @ 12" O.C. AS REQD.
 - NEW BRICK VENEER TO MATCH AS CLOSELY AS POSSIBLE THE BRICK SIZE, COLOR VARIATIONS, TEXTURE, BOND, AND ALL VISUAL MORTAR CHARACTERISTICS OF THE EXISTING BRICK VENEER.

2 LIMESTONE COPING
C302 SCALE = 1"=1'-0"

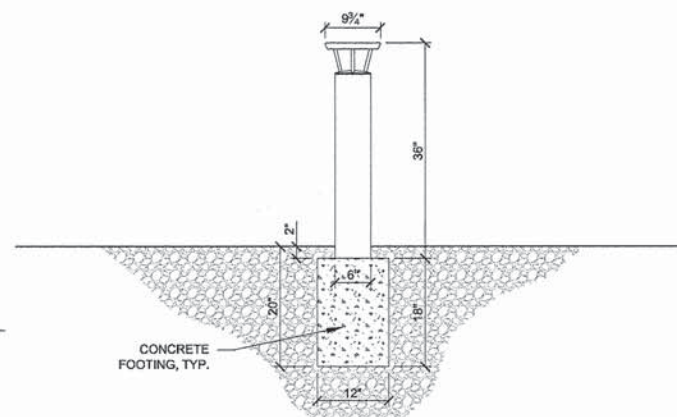


3 CONCRETE LANDING
C302 SCALE = 1"=1'-0"



- NOTES:
- FINISH TO BE POWDER COATED, BLACK COLOR.
 - INSTALL ALL FENCE COMPONENTS ACCORDING TO MANUFACTURERS SPECIFICATIONS.
 - ALTERNATE CAST IRON FINIAL PLACEMENT ON EVERY OTHER FENCE PICKET.
 - NEW WROUGHT IRON FENCE TO REPLACE EXISTING CHAIN LINK FENCE IN EXACT LOCATION.

4 WROUGHT IRON FENCE
C302 SCALE = 1"=1'-0"



- NOTES:
- SOLAR POWERED LED BOLLARDS TO HAVE BLACK FINISH, ASYMMETRICAL LIGHT DISTRIBUTION, 3000K LED COLOR.
 - INSTALLATION TO BE COMPLETED IN ACCORDANCE WITH MANUFACTURER'S SPECIFICATIONS.
 - SURFACE MOUNT BOLLARD ONTO CONCRETE FOOTING.
 - PLACE 2" OF TOPSOIL OVER CONCRETE FOOTING TO ALLOW FOR GRASS SEED MIX.

5 SOLAR POWERED LED BOLLARD
L302 3/4"=1'-0"

| | | | |
|---------------------|---------|--------------------|-----------|
| SECTION | COUNTY | TOTAL SHEETS | SHEET NO. |
| 12-00235-00-SW | MADISON | 19 | 13 |
| FEDERAL AID PROJECT | | CONTRACT NO. 97591 | |

REVISIONS

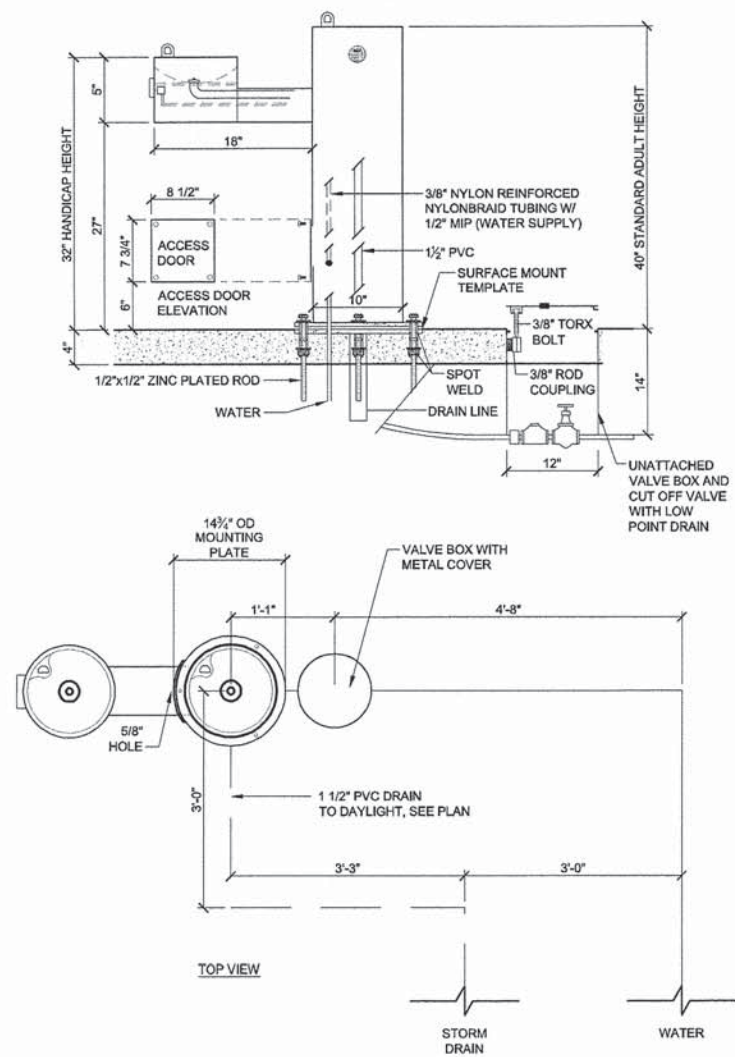
MEETING OF THE GREAT RIVERS
SCENIC BYWAY
OVERLOOK RESTORATION
SECTION 12-00235-00-SW

SITE
DETAILS

COPYRIGHT
CTA INC.
ALL RIGHTS RESERVED
DRAWN BY: KA
CHECKED BY: MS
DATE: 04-10-2015
CTA # ALTONRV_SB

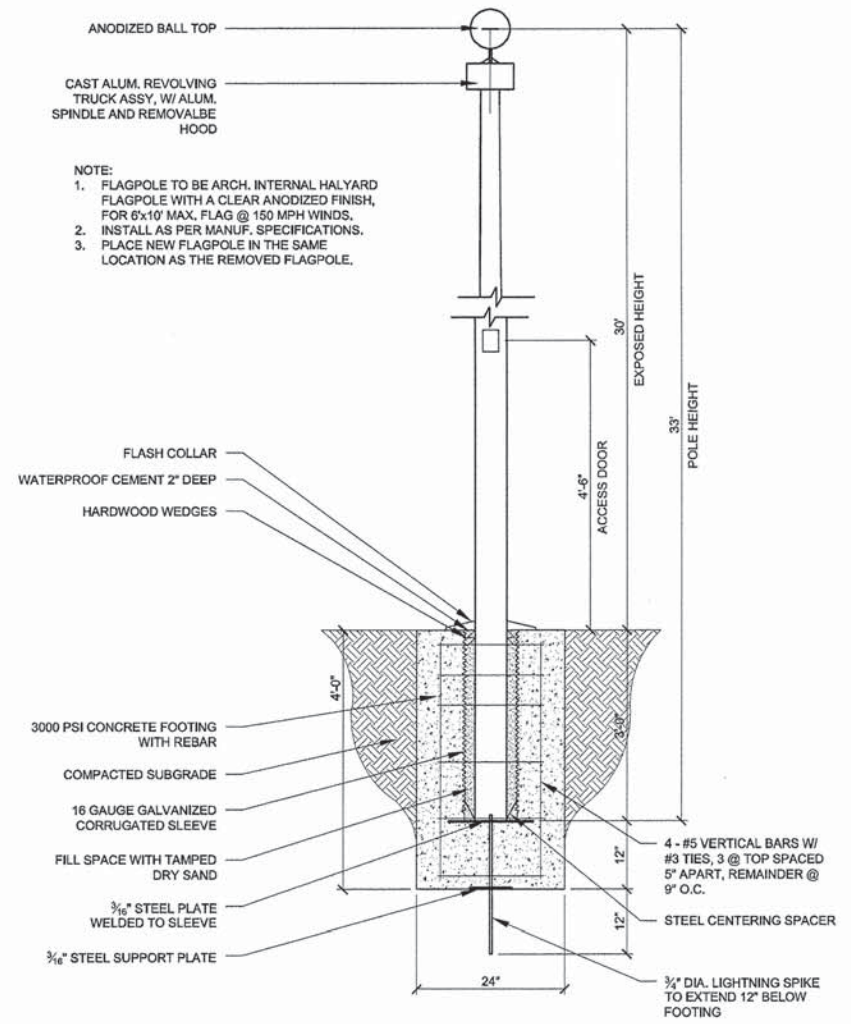


SHEET
C303



- NOTES:
1. MEETS ADA REGULATIONS.
 2. INSTALLATION TO BE COMPLETED IN ACCORDANCE WITH MANUFACTURER'S SPECIFICATIONS.
 3. DRINKING FOUNTAIN SHALL BE EQUIPPED WITH AN UNATTACHED VALVE BOX AND COVER WITH LOW POINT DRAIN.
 4. COLOR TO BE BLACK.

1 DRINKING FOUNTAIN
C303 NTS



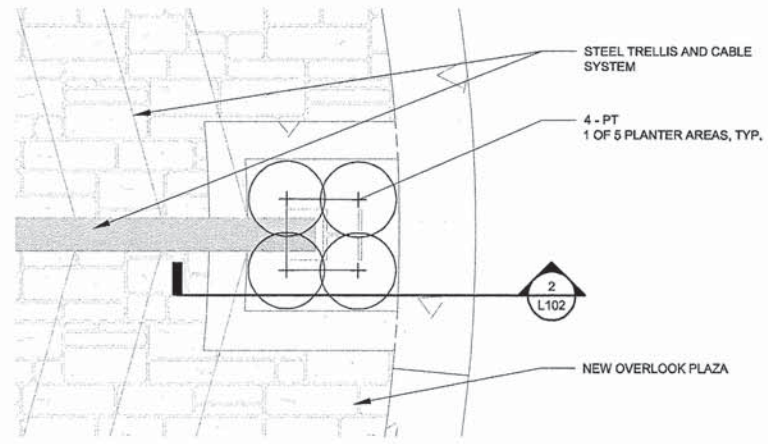
- NOTE:
1. FLAGPOLE TO BE ARCH. INTERNAL HALYARD FLAGPOLE WITH A CLEAR ANODIZED FINISH, FOR 6x10' MAX. FLAG @ 150 MPH WINDS.
 2. INSTALL AS PER MANUF. SPECIFICATIONS.
 3. PLACE NEW FLAGPOLE IN THE SAME LOCATION AS THE REMOVED FLAGPOLE.

2 FLAGPOLE BASE
L303 3/8"=1'-0"

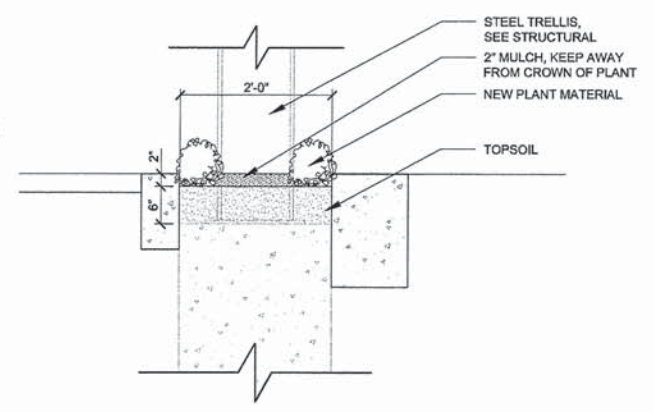
\\VALTONRV\SS\CH\ALTONRV\C303.dwg

| | | | |
|---------------------|--------------------|--------------|-----------|
| SECTION | COUNTY | TOTAL SHEETS | SHEET NO. |
| 12-00235-00-SW | MADISON | 19 | 15 |
| FEDERAL AID PROJECT | CONTRACT NO. 97591 | | |

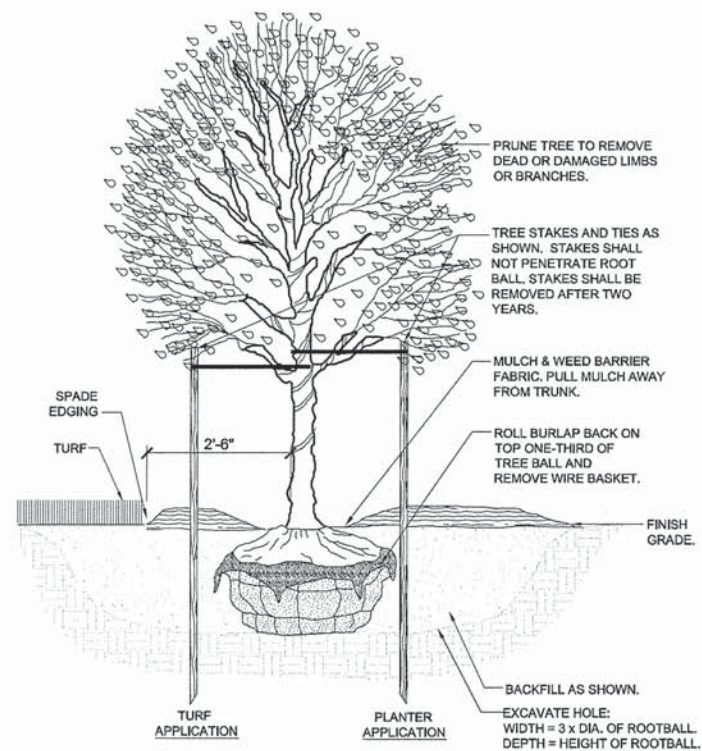
| |
|-----------|
| REVISIONS |
|-----------|



1 ENLARGED PLANTING AREA
L102 NTS



2 PLANTING AREA SECTION
L102 NTS



- NOTES:
1. STAKING AND TREE WRAPPING IS NOT MANDATORY. HOWEVER, THE CONTRACTOR SHALL REPLACE ANY UNSTAKED OR UNWRAPPED TREE WITHOUT QUESTION IF DIRECTED TO DO SO AT ANY TIME THROUGH COMPLETION OF WARRANTY PERIOD.
 2. ALL TREES TO BE PLANTED TO BEAR THE SAME RELATION TO FINISH GRADE AS ORIGINALLY GROWN IN THE NURSERY.
 3. PROVIDE A 2'-6" MULCH RADIUS AROUND TREES IN TURF AREAS.

3 DECIDUOUS TREE PLANTING
L102 SCALE = 1/2" = 1'-0"

MEETING OF THE GREAT RIVERS
SCENIC BYWAY
OVERLOOK RESTORATION
SECTION 12-00235-00-SW

LANDSCAPE
DETAILS

COPYRIGHT
CTA INC.
ALL RIGHTS RESERVED.

DRAWN BY: KA
CHECKED BY: MS
DATE: 04-10-2015
CTA # ALTONRIV_SB

CTA
PLANTING
DETAILS

SHEET
L102

12-00235-00-SW-LANDSCAPE/PLANTING/L102.dwg

GENERAL STRUCTURAL NOTES

GENERAL
GENERAL STRUCTURAL NOTES ARE INTENDED TO HIGHLIGHT RELEVANT STRUCTURAL REQUIREMENTS. REFERENCE CIVIL DRAWINGS FOR BUILDING LOCATION AND ORIENTATION ON THE SITE.

THE GENERAL CONTRACTOR AND ALL SUB-CONTRACTORS ARE RESPONSIBLE FOR COORDINATION OF ALL ARCHITECTURAL, STRUCTURAL, MECHANICAL, ELECTRICAL AND CIVIL WORK. THE CONTRACTOR IS ENCOURAGED TO STUDY THE CONTRACT DOCUMENTS IN DETAIL IN ORDER TO ANTICIPATE ALL INTERACTING TRADES AND THEIR RELATION TO ONE ANOTHER. COORDINATE OPENINGS AND EMBEDDED ITEMS IN CONCRETE WORK WITH ALL TRADES. NOTIFY ENGINEER OF ANY DISCREPANCIES DISCOVERED WHEN COORDINATING WITH OTHER TRADES OR WHEN FIELD CONDITIONS DIFFER FROM THOSE INDICATED. CONSTRUCTION LOADS SHALL NOT BE GREATER THAN THE DESIGN LOADS INDICATED UNLESS REVIEWED AND APPROVED BY THE ENGINEER. COORDINATE DIMENSIONS AND DETAILS WITH EQUIPMENT MANUFACTURERS. TEMPORARILY BRACE THE STRUCTURE TO RESIST ALL LOADS OR COMBINATIONS OF LOADS. IT IS THE CONTRACTORS RESPONSIBILITY TO MAINTAIN THE STABILITY OF THE STRUCTURE UNTIL ALL PERMANENT ELEMENTS ARE IN PLACE AND ALL CONNECTIONS ARE COMPLETE AS SHOWN.

GOVERNING CODES:

- INTERNATIONAL BUILDING CODE (IBC), 2009 EDITION
- BUILDING CODE REQUIREMENTS FOR STRUCTURAL CONCRETE, ACI 318-08
- STEEL CONSTRUCTION MANUAL (AISC), THIRTEENTH EDITION

DESIGN LOADS AND CRITERIA:

GRAVITY LOADS (PSF):

| ROOF | DEAD LOAD | SNOW LOAD |
|---------|-----------------|-----------|
| GENERAL | 15 MAX / 12 MIN | 25 |

| FLOOR | DEAD LOAD | LIVE LOAD |
|-----------|-----------|-----------|
| BANDSTAND | 73 | 100 |

WIND CRITERIA: OCCUPANCY CATEGORY II; IMPORTANCE FACTOR: I= 1.00
BASIC WIND SPEED 90 MPH; EXPOSURE B

SEISMIC CRITERIA: OCCUPANCY CATEGORY II; IMPORTANCE FACTOR: I= 1.00
SITE CLASS D; SDS = .456 / SD1 = .219; DESIGN CATEGORY D

SOIL BEARING PRESSURE: (PER GEOTECH REPORT)
3000 PSF @ SPREAD FOOTINGS
2500 PSF @ CONTINUOUS FOOTINGS

3000 PSF @ TOE OF CONTINUOUS RETAINING WALL
5000 PSF @ HELICAL ANCHORS w/ TOP PLATES AT -10'-0" FROM FIN GRADE

MATERIALS:

CONCRETE:

PORTLAND CEMENT ASTM C150 TYPE I / II
FLY ASH ASTM C615 CLASS C OR F 20% MAX. BY WEIGHT
WATER / CEMENT = FLY ASH = 0.45 MAXIMUM
ENTRAINED AIR 4.5% - 7.0% EXCEPT INTERIOR SLABS
3/4" MAX. NORMAL WEIGHT AGGREGATE

3000 PSI - FOOTINGS
3500 PSI - ELEVATED SLABS ON DECK
4000 PSI - EXTERIOR & EXPOSED INTERIOR SLABS, STEM WALLS & PIERS

MILD REINFORCING: (ALL STEEL TO BE U.S. MANUFACTURED)

REINFORCING BARS: ASTM A615, GRADE 60
ASTM A706, GRADE 60 FOR WELDING
DEFORMED BARS ANCHORS: ASTM A496, Fy = 70KSI
WELDED WIRE FABRIC: ASTM A185, FLAT SHEET MATERIAL

MASONRY:

BRICK: ASTM C-216, GRADE SW, TYPE FBX
MORTAR: ASTM C270, TYPE S

STRUCTURAL STEEL: (ALL STEEL TO BE U.S. MANUFACTURED)

W SHAPES: ASTM A992, Fy = 50 KSI (BANDSTAND); ASTM A588, Fy = 50 KSI (TRELIS)
OTHER SHAPES: ASTM A36
PLATES: ASTM A36, Fy = 36 KSI (BANDSTAND); ASTM A242, Fy = 36 KSI (TRELIS)
HSS (RECT): ASTM A500 GRADE B, Fy = 46 KSI
HSS (ROUND): ASTM A500 GRADE B, Fy = 42 KSI
ANCHOR RODS: ASTM F1554 GRADE 36
THREADED RODS: ASTM A36
HIGH STRENGTH BOLTS: ASTM A325 TYPE 1 UNCOATED, (STEEL-TO-STEEL CONN)
HEADED ANCHOR STUDS: ASTM A108 GRADE 1010 - 1020, Fu = 60 KSI
(AWS D1.1 TABLE 7.1, TYPE B)
WELDS: 7X-EXXX FILLER METAL SHOP, E70XX FILLER METAL FIELD
STEEL DECK: ASTM A446 GRADE A OR A653, Fy = 33 KSI

MISCELLANEOUS:

ADHESIVE ANCHORS: ASTM A36 SHANK - ALL THREAD TYPE, INJECTABLE ADHESIVE
TYPE TO SUIT BASE MATERIAL AS APPROVED BY THE ENGINEER

GROUT: ASTM C1107, NON-METALLIC NON-SHRINK, 3 DAY Fc = 4000 PSI

FOUNDATIONS:

FOOTINGS:
FOUNDATIONS HAVE BEEN DESIGNED BASED ON INFORMATION PRESENTED IN THE "GEOTECHNICAL SERVICES REPORT" BY PSI NO. 00291885-1 DATED DECEMBER 3 2014. LOG BORINGS AND LABORATORY TEST RESULTS ARE INCLUDED FOR REFERENCE IN THE PROJECT MANUAL. PLACE FOOTINGS ON UNDISTURBED NATURAL SOILS OR ENGINEERED FILL PLACED OVER UNDISTURBED NATURAL SOILS AS DESCRIBED IN THE GEOTECHNICAL REPORT. PLAN LIMITS OF ENGINEERED FILL MUST EXTEND AT LEAST 1'-0" BEYOND ALL FOOTING EDGES AT BEARING ELEVATION, PLACED AT 1.5 HORIZONTAL TO 1 VERTICAL OR FLATTER.

SLABS ON GRADE:
PLACE EXTERIOR SLABS ON GRADE OVER OVER A 4" THICK DRAINAGE COURSE OF MINUS 3/4", GRADED FOR COMPACTION WITH < 10% PASSING THE #200 SIEVE. PLACE THE DRAINAGE COURSE LAYER ON NATURAL INORGANIC GRANULAR SOILS. IF PRESENT, REMOVE ALL ORGANIC SOILS AND REPLACE WITH GRANULAR FILL PLACED OVER UNDISTURBED NATURAL INORGANIC GRAVEL SOILS, AS REQUIRED. COMPACT THE 4" DRAINAGE COURSE (AND ANY SUPPLEMENTAL GRANULAR FILL, IF REQUIRED) TO 95% STANDARD PROCTOR ACCORDING TO ASTM D698.

RETAINING WALLS:
BACKFILL RETAINING WALLS AS DESCRIBED IN THE GEOTECHNICAL REPORT.

CAST-IN-PLACE CONCRETE:

PERFORM CONCRETE WORK IN ACCORDANCE WITH ACI 301-05 STANDARD "SPECIFICATIONS FOR STRUCTURAL CONCRETE" UNLESS MORE STRINGENT REQUIREMENTS ARE INDICATED.

MINIMUM MILD REINFORCING BAR COVER: (ALL STEEL TO BE U.S. MANUFACTURED)
3" AT UNFORMED SURFACES EXPOSED TO EARTH,
2" AT FORMED SURFACES EXPOSED TO EARTH OR WEATHER FOR #6 AND LARGER,
1 1/2" AT FORMED SURFACES EXPOSED TO EARTH OR WEATHER FOR #3-#5,
1" AT SLABS AND WALLS NOT EXPOSED TO EARTH OR WEATHER.

SPLICE REINFORCING BARS BY LAPPING ACCORDING TO THE SCHEDULE ON THE DRAWINGS. SECURE ALL REINFORCING IN POSITION WITH CHAIRS BEFORE CONCRETE PLACEMENT. CONCRETE DOBIES MAY BE USED TO POSITION SLAB ON GRADE REINFORCEMENT. TIE DOWELS IN PLACE BEFORE PLACING CONCRETE. DO NOT STAB OR "WET-SET" DOWELS. INSTALL AND SECURE EMBEDMENTS SUCH AS ANCHOR BOLTS AND EMBEDMENT PLATES WITHIN SPECIFIED TOLERANCES BEFORE CONCRETE PLACEMENT.

MECHANICALLY VIBRATE ALL CONCRETE PLACEMENTS EXCEPT SLABS LESS THAN 5" THICK. WHERE SLAB CONTRACTION JOINTS ARE SHOWN ON THE DRAWINGS, CONSTRUCTION JOINTS MAY BE SUBSTITUTED TO ACCOMMODATE THE CONTRACTORS PLACEMENT STRATEGY. PROTECT AND CURE ALL CONCRETE SURFACES. BEGIN CURING WALLS IMMEDIATELY AFTER STRIPPING FORMS AND FLATWORK IMMEDIATELY AFTER FINISHING.

MASONRY:

SECURE MASONRY VENEER TO SUPPORTING STRUCTURE AT 16" VERTICAL AND HORIZONTAL WITH APPROVED TIE ANCHORS.

STRUCTURAL STEEL: (ALL STEEL TO BE U.S. MANUFACTURED)

MEMBERS:
DETAIL, FABRICATE AND ERECT STRUCTURAL STEEL IN ACCORDANCE WITH THE THIRTEEN EDITION OF THE AISC "STEEL CONSTRUCTION MANUAL".

COMPOSITE FLOOR CONSTRUCTION:
IT IS THE INTENTION OF THE DESIGN TO PROVIDE A SLAB OF UNIFORM THICKNESS UNLESS OTHERWISE NOTED. PLACE COMPOSITE FLOOR SLAB IN THE LARGEST PRACTICAL AREAS SO AS TO MINIMIZE THE LENGTH OF CONSTRUCTION JOINTS. IN-PLACE TOP OF BEAM ELEVATIONS MUST BE SURVEYED BY THE CONCRETE CONTRACTOR BEFORE SLAB PLACEMENT TO VERIFY CONFORMANCE WITH THE SPECIFIED ELEVATION PLUS CAMBER. NOTIFY THE ENGINEER OF ANY FIELD ELEVATIONS ± 3/8" OUTSIDE SPECIFIED ELEVATIONS. SUBMIT AN ELEVATED SLAB PLACEMENT STRATEGY/Joint PATTERN TO THE ENGINEER FOR REVIEW AND APPROVAL BEFORE PLACING ELEVATED SLABS. IN GENERAL, PLACE ELEVATED SLABS IN STRIPS PARALLEL TO DECK SPAN.

STEEL DECK:
PROVIDE PHOSPHATIZED SURFACE ON SIDE IN CONTACT WITH CONCRETE. PRIME PAINT ALL OTHER CONDITIONS. FRAME AROUND ALL OPENINGS THROUGH DECK IN ACCORDANCE WITH TYPICAL DETAIL SHOWN UNLESS SPECIFICALLY INDICATED OTHERWISE. INDIVIDUAL SHEET LENGTH SHALL BE CONTINUOUS FOR 3 SPANS. SUBMIT SHOP DRAWINGS SHOWING DECK TYPE, LAYOUT AND DETAILING FOR REVIEW BY THE ENGINEER PRIOR TO FABRICATION. DO NOT ATTACH PIPES, DUCTS, CABLE TRAYS, EQUIPMENT, CEILINGS (UNO) OR HANGERS FOR OTHER WORK DIRECTLY FROM DECK. PROVIDE UNISTRUT FRAMING SUPPORTED DIRECTLY FROM THE BEAMS OR WALLS FOR THE ABOVE ITEMS. LAY-IN ACOUSTICAL CEILINGS AND INDIVIDUAL ELECTRICAL CONDUIT 1" DIA. OR LESS MAY BE ATTACHED DIRECTLY TO THE DECK.

CONNECTIONS:
HIGH STRENGTH BOLTS SHALL BE FULLY TENSIONED. PROVIDE DIRECT TENSION INDICATOR (TENSION INDICATING WASHERS), OR LEJEUUNE TYPE BOLTS (TWIST-OFF BOLTS). COORDINATE BOLT TENSIONING WITH ENGINEER / INSPECTOR. HEADED ANCHOR STUD WELDING MUST CONFORM TO INSTALLATION SPECIFICATIONS PROVIDED BY THE STUD MANUFACTURER.

PERFORM SHOP AND FIELD WELDING IN ACCORDANCE WITH THE AMERICAN WELDING SOCIETY'S "STRUCTURAL WELDING CODE". ALL WELDERS SHALL HAVE EVIDENCE OF PASSING THE AWS STANDARD QUALIFICATION TESTS. NONDESTRUCTIVE WELD TESTS MAY BE PERFORMED. DEFICIENT WELDS WILL BE CORRECTED AND RETESTED AT THE CONTRACTOR'S EXPENSE.

SPECIAL INSPECTIONS:

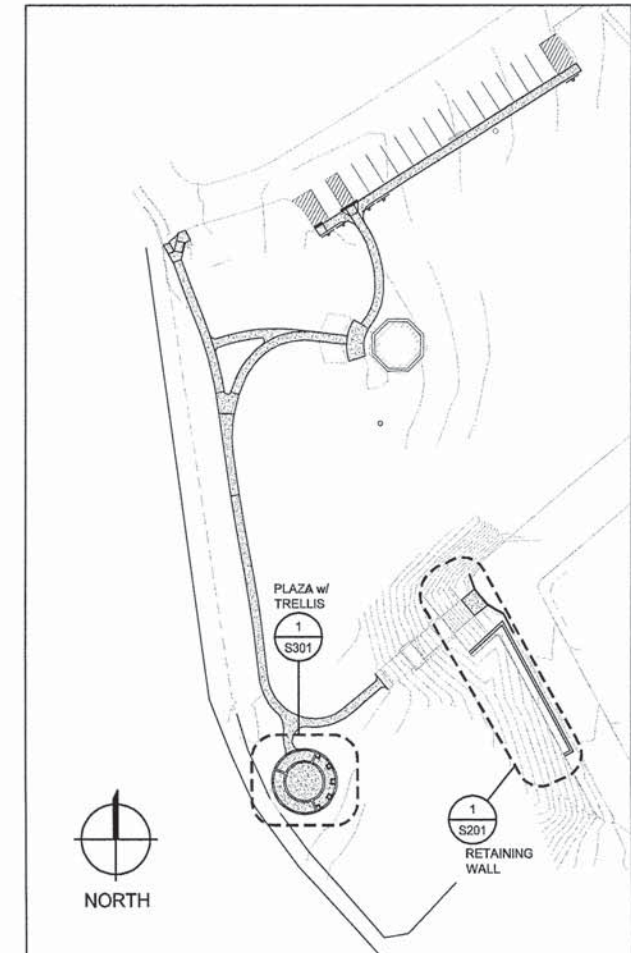
SPECIAL INSPECTIONS DESCRIBED BELOW WILL BE PERFORMED UNDER SEPARATE CONTRACT BY AGENCIES RETAINED BY THE PROJECT OWNER. THE CONTRACTOR IS RESPONSIBLE FOR KEEPING THE ENGINEER APPRISED OF WORK PROGRESS AS IT PERTAINS TO SPECIAL INSPECTIONS AND ENSURING THAT NO WORK REQUIRING SPECIAL INSPECTIONS IS CONCEALED BEFORE SPECIAL INSPECTIONS OCCUR. SEE PROJECT SPECIFICATIONS FOR OTHER INSPECTIONS AND MATERIALS TESTING REQUIREMENTS. ALL SPECIAL INSPECTIONS SHALL MEET THE REQUIREMENTS OF IBC CHAPTER 17 AS FOLLOWS:

ABBREVIATIONS:

(SOME OF THE LISTED ABBREVIATIONS MAY NOT APPEAR ON THE DRAWINGS)

| | | | |
|-----------|--------------------------|-------|-----------------------------|
| ANC | ANCHOR | JST | JOIST |
| AB | ANCHOR BOLT | | |
| ALT | ALTERNATE | K | KIPS |
| ADJ | ADJACENT | KSI | KIPS PER SQUARE INCH |
| | | | |
| BLDG | BUILDING | LBS | POUNDS |
| BRG | BEARING | LF | LINEAR FOOT |
| BETWN | BETWEEN | LL | LIVE LOAD |
| BOT | BOTTOM | LONG | LONGITUDINAL |
| | | LSL | LAMINATE STRAND LUMBER |
| | | LVL | LAMINATE VENEER LUMBER |
| | | | |
| C | CAMBER | MAS | MASONRY |
| CL | CENTERLINE | MAX | MAXIMUM |
| CLR | CLEAR | MB | MACHINE BOLT |
| CMU | CONCRETE MASONRY UNIT | MECHL | MECHANICAL |
| CNTR | CENTER | MIN | MINIMUM |
| CFS | COLD FORMED STEEL | MISC | MISCELLANEOUS |
| COL | COLUMN | ML | MICROLLAM |
| CONC | CONCRETE | | |
| CONN | CONNECTION / CONNECTOR | | |
| CONSTR JT | CONSTRUCTION JOINT | (N) | NEW |
| CONT | CONTINUE / CONTINUOUS | N.A. | NEUTRAL AXIS |
| CONTR | CONTRACTOR | | |
| CONTR JT | CONTRACTION JOINT | | |
| COORD | COORDINATE | OC | ON CENTER |
| CVR | COVER | OVS | OVERSIZED ROUND HOLE |
| | | OPP | OPPOSITE |
| | | OVSJ | OPEN WEB STEEL JOIST |
| | | | |
| DBA | DEFORMED BAR ANCHOR | | |
| DBL | DOUBLE | | |
| DET | DETAIL | PROJ | PROJECTION |
| DIA | DIAMETER | PDP | POWDER-DRIVEN PIN |
| DL | DEAD LOAD | PERP | PERPENDICULAR |
| DP | DEEP | PL | PLATE |
| | | PSF | POUNDS PER SQUARE FOOT |
| EA | EACH | PSI | POUNDS PER SQUARE INCH |
| EF | EACH FACE | PSL | PARALLEL STRAND LUMBER |
| EW | EACH WAY | | |
| ELEV | ELEVATION | REQ | REQUIRED |
| EMBED | EMBEDDED / EMBEDMENT | REINF | REINFORCEMENT / REINFORCING |
| EN | EDGE NAILING | | |
| EQUIP | EQUIPMENT | SCHL | SCHEDULE |
| (E) | EXISTING | SIM | SIMILAR |
| EXP | EXPANSION | SJI | STEEL JOIST INSTITUTE |
| EXT | EXTERIOR | SSL | SHORT SLOTTED HOLE |
| | | STIFF | STIFFENER |
| | | | |
| FF | FINISH FLOOR | | |
| FND | FOUNDATION | THK | THICK / THICKNESS |
| FTG | FOOTING | TAS | THREADED ANCHOR STUDS |
| F.V. | FIELD VERIFY | TRANS | TRANSVERSE |
| | | TS | TUBE STEEL |
| | | TYP | TYPICAL |
| ga | GAUGE | | |
| GLB | GLU-LAM BEAM | UNO | UNLESS NOTED OTHERWISE |
| GSN | GENERAL STRUCTURAL NOTES | | |
| | | | |
| HAS | HEADED ANCHOR STUD | VERT | VERTICAL |
| HDR | HEADER | | |
| HGR | HANGER | WD | WOOD |
| HORIZ | HORIZONTAL | w/ | WITH |
| HP | HIGH POINT | w/OUT | WITH OUT |
| HSS | HIGH STRENGTH BOLT | WF | WIDE FLANGE |
| | | W.P. | WORK POINT |
| | | WWF | WELDED WIRE FABRIC |
| | | | |
| ISOL JT | ISOLATION JOINT | | |
| INT | INTERIOR | | |

KEYPLAN



| SECTION | COUNTY | TOTAL SHEETS | SHEET NO. |
|---------------------|--------------------|--------------|-----------|
| 12-00235-00-SW | MADISON | 19 | 16 |
| FEDERAL AID PROJECT | CONTRACT NO. 97591 | | |

REVISIONS
 MEETING OF THE GREAT RIVERS
 SCENIC BYWAY
 OVERLOOK RESTORATION
 SECTION 12-00235-00-SW

GENERAL
 STRUCTURAL
 NOTES

COPYRIGHT
 CTA INC.
 ALL RIGHTS RESERVED
 DRAWN BY: RAS
 CHECKED BY: ETP
 DATE: 04-10-2015
 CTA # ALTONRRV_SB

GENERAL
 STRUCTURAL
 NOTES

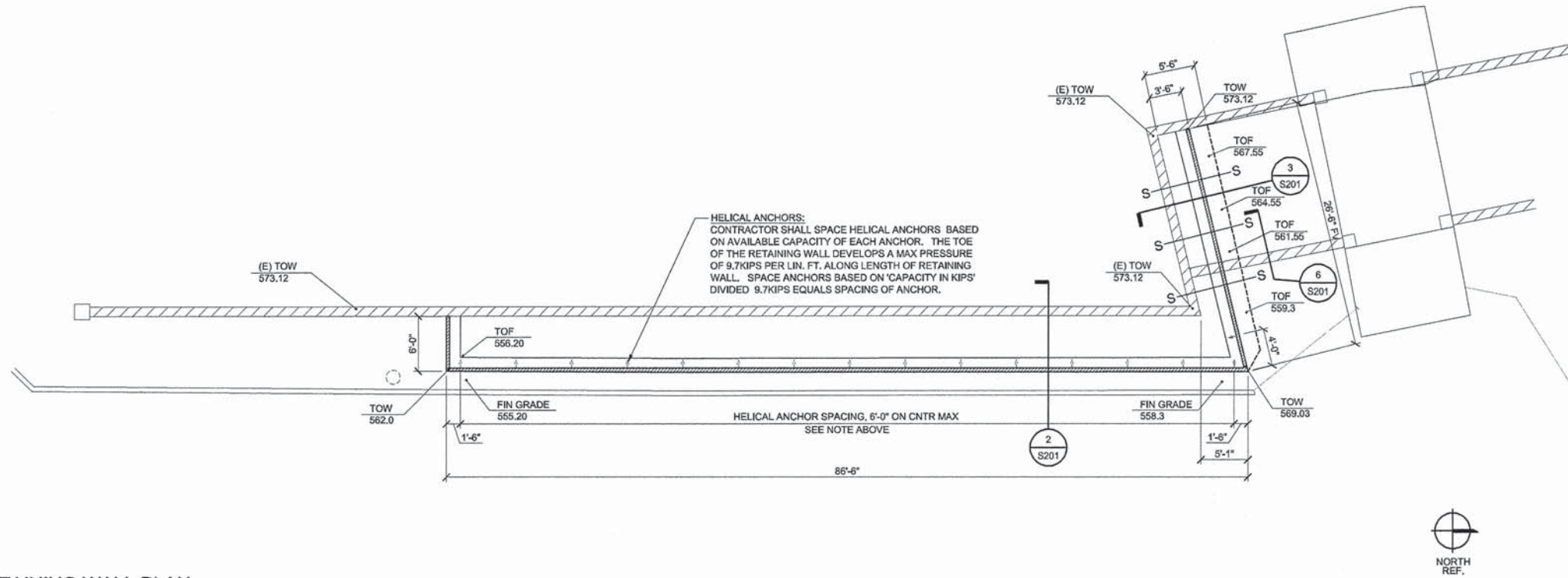
SHEET
 S001

GENERAL NOTES:
 1. NEW BRICK VENEER ON NEW RETAINING WALL TO MATCH AS CLOSELY AS POSSIBLE THE BRICK SIZE, COLOR VARIATIONS, TEXTURE, BOND, AND ALL VISUAL MORTAR CHARACTERISTICS OF THE EXISTING BRICK VENEER.

| SECTION | COUNTY | TOTAL SHEETS | SHEET NO. |
|---------------------|--------------------|--------------|-----------|
| 12-00235-00-SW | MADISON | 19 | 17 |
| FEDERAL AID PROJECT | CONTRACT NO. 97591 | | |

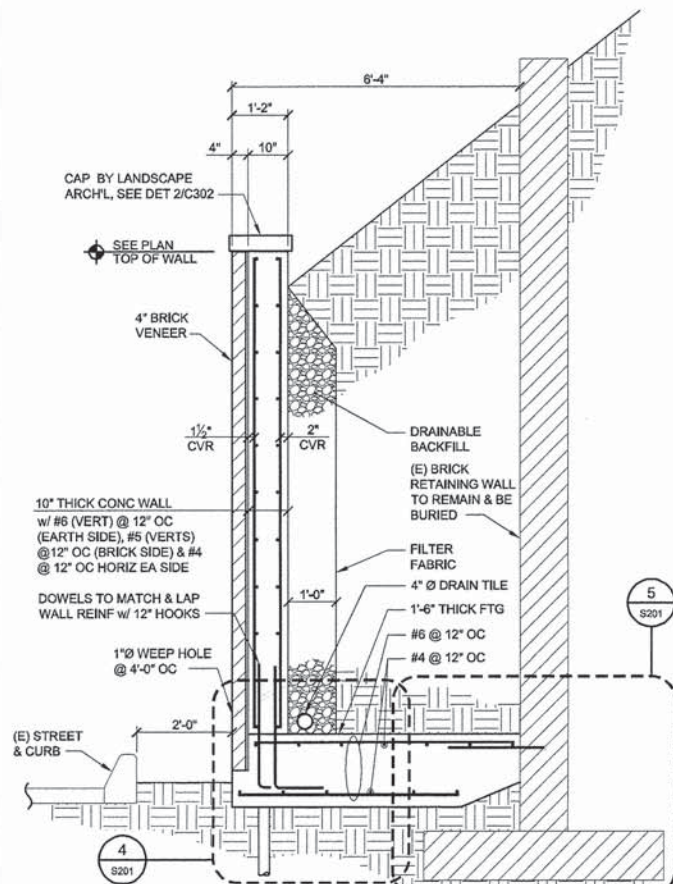
REVISIONS

MEETING OF THE GREAT RIVERS
 SCENIC BYWAY
 OVERLOOK RESTORATION
 SECTION 12-00235-00-SW



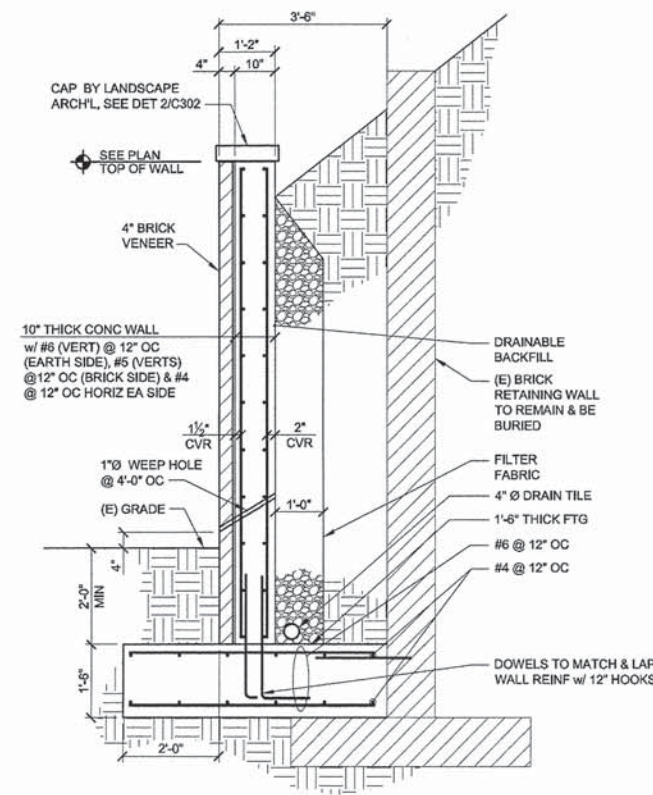
1 REPLACED RETAINING WALL PLAN

S201 1/8"=1'-0"



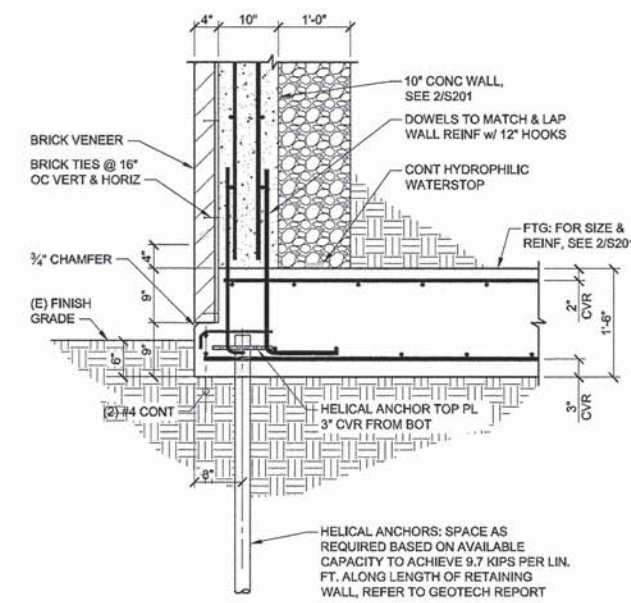
2 WALL SECTION

S201 1/2"=1'-0"



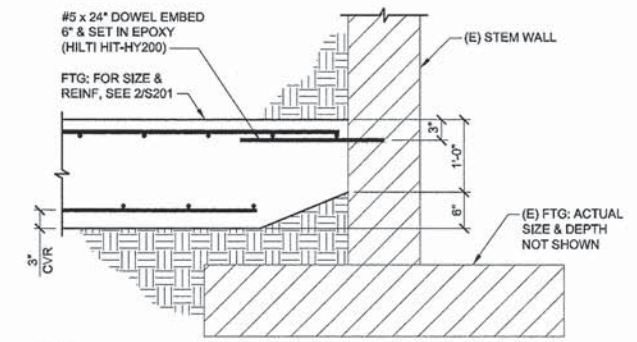
3 WALL SECTION

S201 1/2"=1'-0"



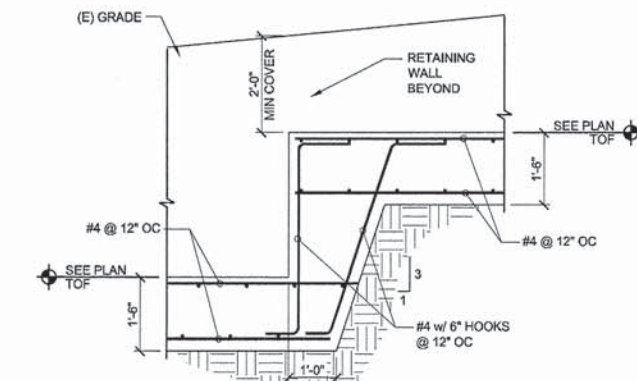
4 BASE OF WALL CONNECTION

S201 3/4"=1'-0"



5 BACK END OF FTG TO (E) WALL

S201 3/4"=1'-0"



6 STEP FOOTING

S201 1/2"=1'-0"

WALL PLAN & DETAILS

COPYRIGHT
 CTA INC.
 ALL RIGHTS RESERVED
 DRAWN BY: RAS
 CHECKED BY: ETP
 DATE: 04-10-2015
 CTA # ALTONRV_SB

CTA
 WALL PLAN & DETAILS

SHEET
 S201

| | | | |
|---------------------|---------|--------------------|-----------|
| SECTION | COUNTY | TOTAL SHEETS | SHEET NO. |
| 12-00235-00-SW | MADISON | 19 | 18 |
| FEDERAL AID PROJECT | | CONTRACT NO. 97591 | |

| |
|-----------|
| REVISIONS |
|-----------|

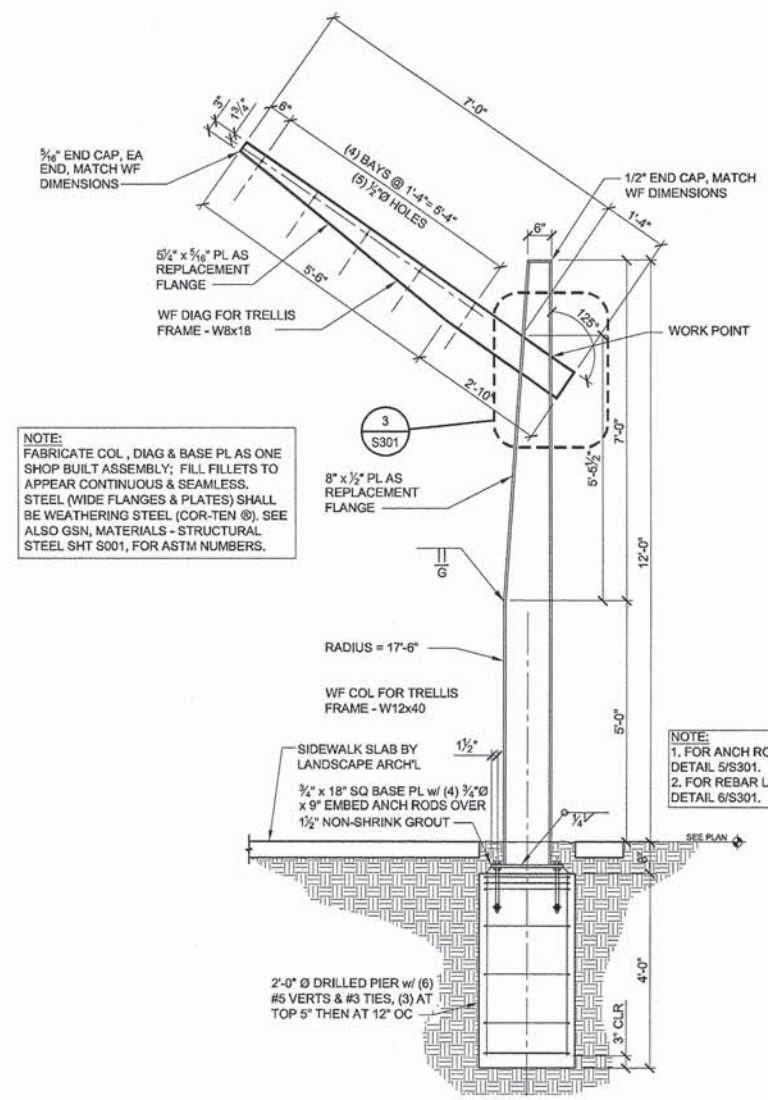
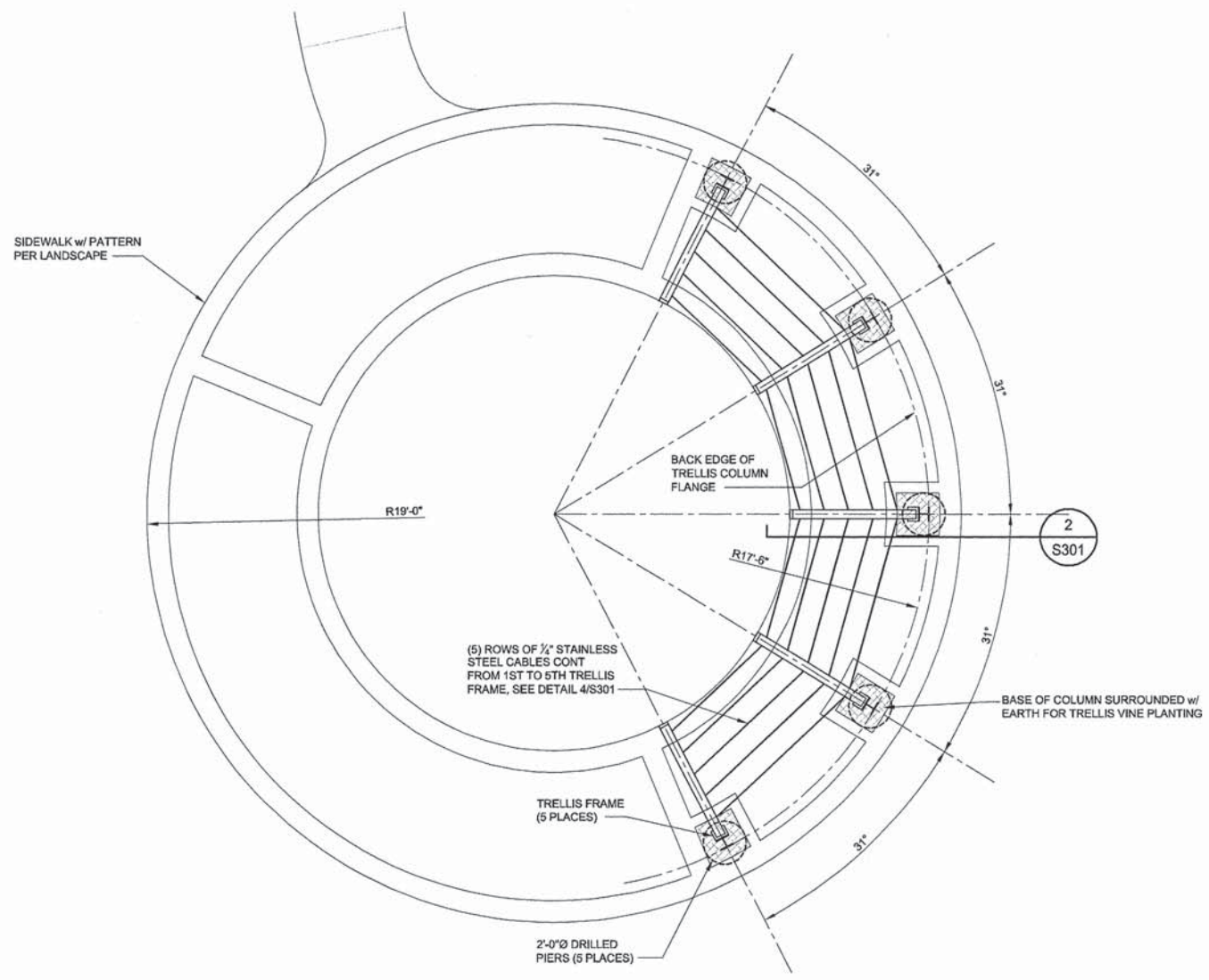
MEETING OF THE GREAT RIVERS
SCENIC BYWAY
OVERLOOK RESTORATION
SECTION 12-00235-00-SW

PLAZA
TRELLIS PLAN
& DETAILS

COPYRIGHT
CTA INC.
ALL RIGHTS RESERVED
DRAWN BY: RAS
CHECKED BY: ETP
DATE: 04-10-2015
CTA # ALTONRIV_SB

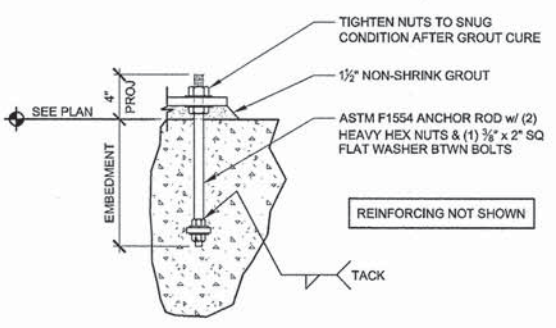
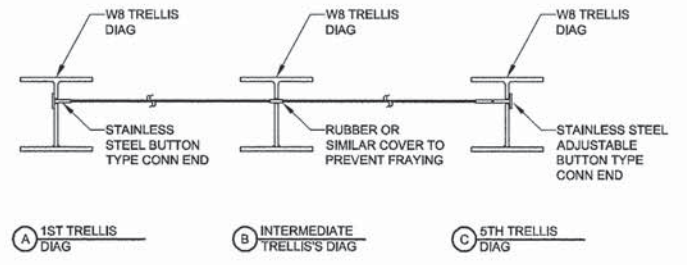
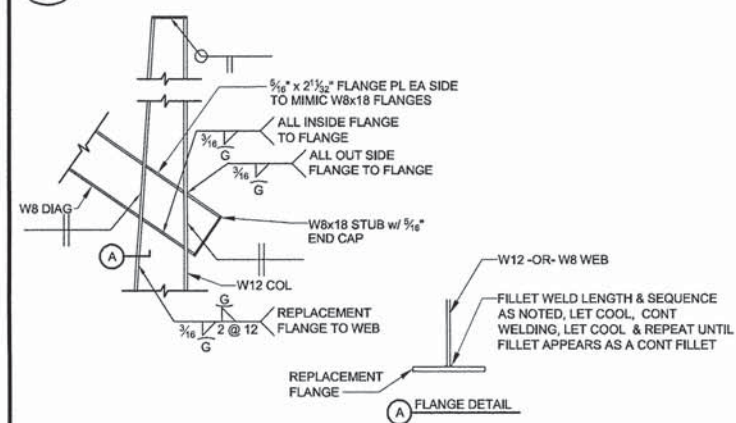


PLAZA TRELLIS
PLAN &
DETAILS
SHEET
S301



1 PLAZA PLAN
S301 1/4"=1'-0"

2 TRELLIS FRAME (5 PLACES)
S301 1/2"=1'-0"



| REBAR SIZE | CONCRETE | | MASONRY |
|------------|-------------|---------|---------|
| | VERT & HORZ | TOP BAR | ALL |
| #3 | 1'-3" | 1'-7" | - |
| #4 | 1'-6" | 2'-1" | 2'-0" |
| #5 | 2'-0" | 2'-7" | 2'-6" |
| #6 | 2'-6" | 3'-1" | 3'-0" |
| #7 | 3'-6" | 4'-6" | 3'-6" |
| #8 | 4'-0" | 5'-2" | 4'-2" |

NOTES:
1. LAP LENGTHS ARE BASED ON MINIMUM COVER REQUIREMENTS INDICATED AND C-C BAR SPACING TO BE NO MORE THAN THREE BAR DIAMETERS.
2. TOP BAR LAPS ARE HORIZONTAL LAPS WHERE MORE THAN 12" OF FRESH CONCRETE IS PLACED BELOW THE BARS.

3 TRELLIS DETAIL
S301 3/4"=1'-0"

4 TRELLIS CABLE DETAIL
S301 3/4"=1'-0"

5 ANCHOR ROD ASSEMBLY
S301 3/4"=1'-0"

6 REINFORCING BAR LAP SCHEDULE
S301 NO SCALE

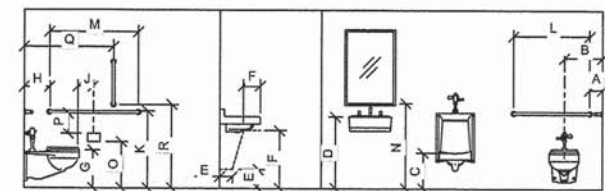
REVISIONS

MEETING OF THE GREAT RIVERS
SCENIC BYWAY
OVERLOOK RESTORATION
SECTION 12-00235-00-SW

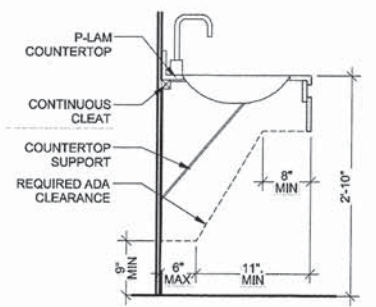
TOILET ACCESSORY SCHEDULE

| EQ # | DESCRIPTION | COUNT | PROVIDED BY OWNER |
|------|----------------------------------|-------|-------------------|
| TA01 | SIDE & BACK WALL GRAB BARS | 2 | NO |
| TA02 | TOILET PAPER DISPENSER | 2 | NO |
| TA03 | SANITARY NAPKIN DISPOSAL | 1 | NO |
| TA04 | MIRROR (24"x36") | 2 | NO |
| TA05 | SOAP DISPENSER | 2 | NO |
| TA06 | PAPER TOWEL DISPENSER | 2 | NO |
| TA07 | FALUCET | 2 | NO |
| TA08 | TOILET | 2 | NO |
| TA09 | URINAL | 1 | NO |
| TA10 | TOILET PARTITION (PAINTED METAL) | 2 | NO |
| TA11 | FLOOR DRAIN | 2 | NO |
| TA12 | URINAL SCREEN (PAINTED METAL) | 1 | NO |

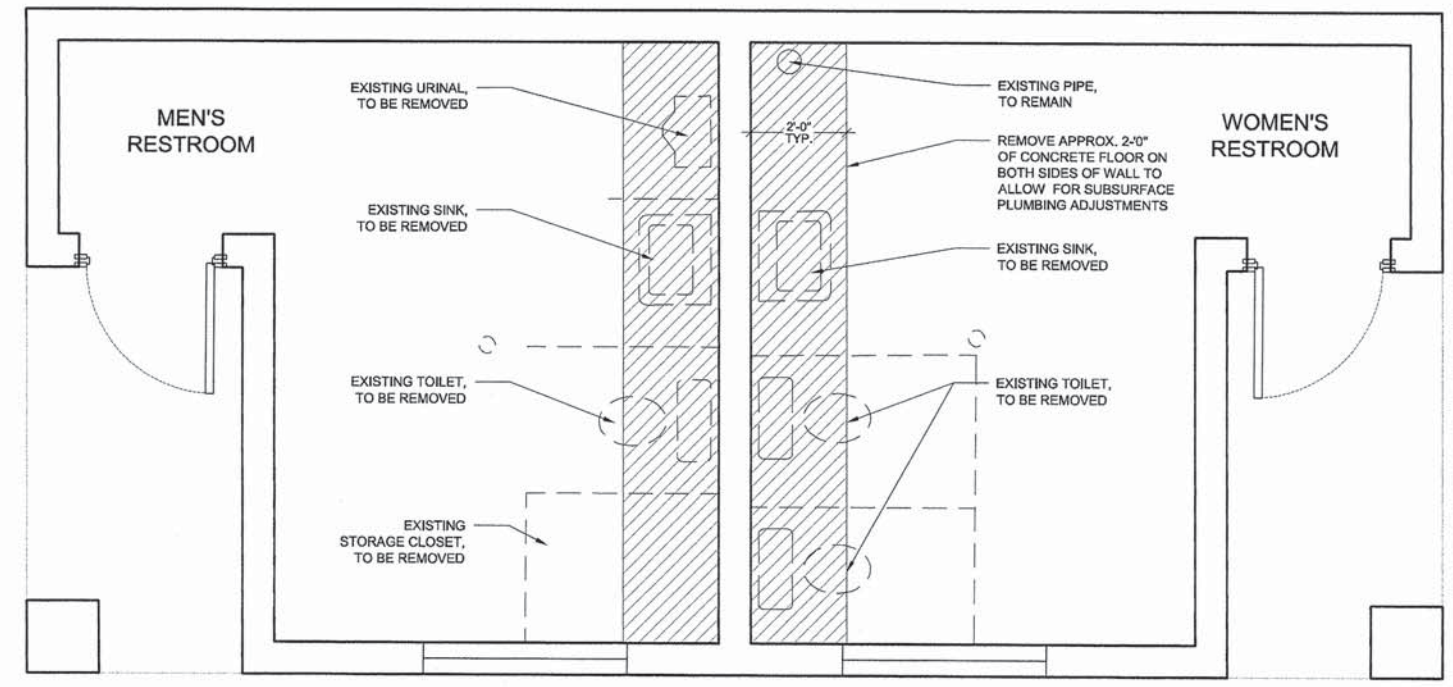
NOTE: ALL TOILET ACCESSORIES TO BE PROVIDED & INSTALLED BY CONTRACTOR



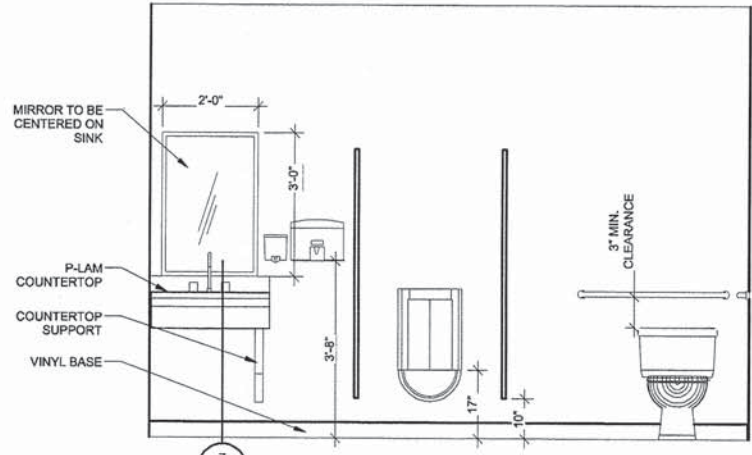
| FIXTURE | DIM# | MOUNTING HEIGHT |
|-----------------------|------|--|
| GRAB BAR | A | 6" TO CENTER FROM ADJACENT WALL |
| TOILET (ADA) | B | 18" TO CENTER FROM ADJACENT WALL |
| URINAL | C | 24" TO RIM ABOVE FINISH FLOOR |
| URINAL (ADA) | C | 17" TO RIM ABOVE FINISH FLOOR |
| SINK (ADA) | D | 34" MAX TO SINK RIM ABOVE FINISH FLOOR |
| SINK (ADA) | E | 9" HIGH X 6" DEEP TOE CLEARANCE |
| SINK (ADA) | F | 27" MIN X 8" DEEP KNEE CLEARANCE |
| TOILET | G | 14" TO TOP OF RIM |
| TOILET (ADA) | G | 17" - 19" TOP OF SEAT |
| GRAB BAR (ADA) | H | 12" TO CENTER FROM ADJACENT WALL |
| TOILET PAPER HOLDER | J | 7" - 9" TO CENTERLINE FROM TOILET |
| GRAB BAR | K | 33" - 36" TO TOP A.F.F. |
| GRAB BAR | L | 36" OUTSIDE TO OUTSIDE |
| GRAB BAR | M | 42" OUTSIDE TO OUTSIDE |
| MIRROR | N | 40" MAX TO BOT OF MIRROR SURFACE |
| TOILET PAPER HOLDER | O | 19" MIN. TO CENTER ABOVE FINISH FLOOR |
| TOILET PAPER HOLDER | P | 1 1/2" MIN. FROM BOTTOM OF GRAB BAR |
| 18" VERTICAL GRAB BAR | Q | 39" - 41" FROM WALL |
| 18" VERTICAL GRAB BAR | R | 39" - 41" FROM FLOOR |



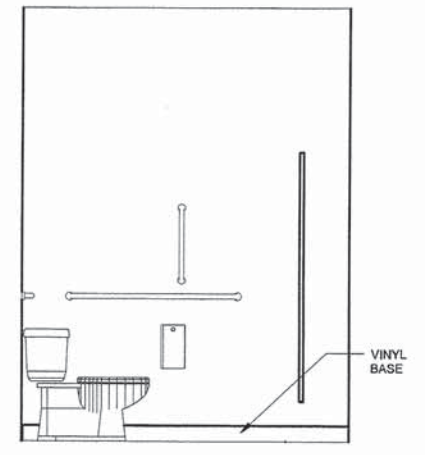
7 RESTROOM COUNTER
A101 3/4" = 1'-0"



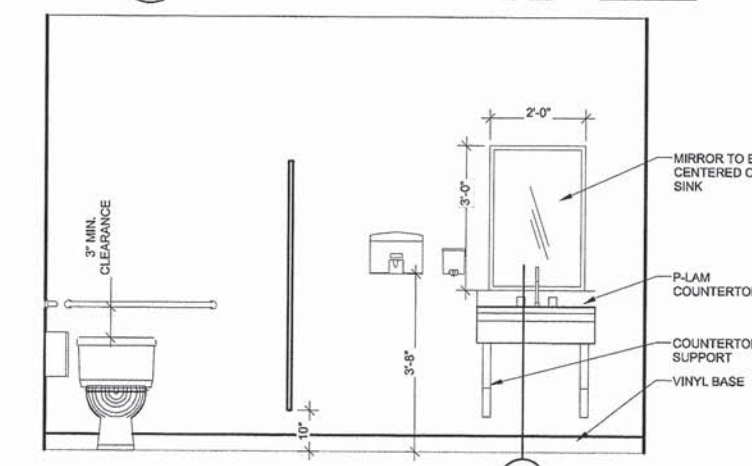
1 DEMOLITION FLOOR PLAN
A101 1/2" = 1'-0"



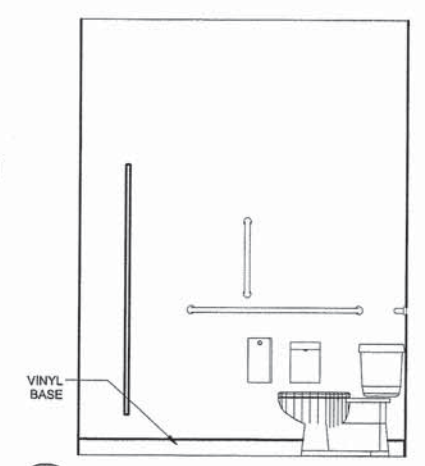
4 MEN'S RESTROOM EAST
A101 1/2" = 1'-0"



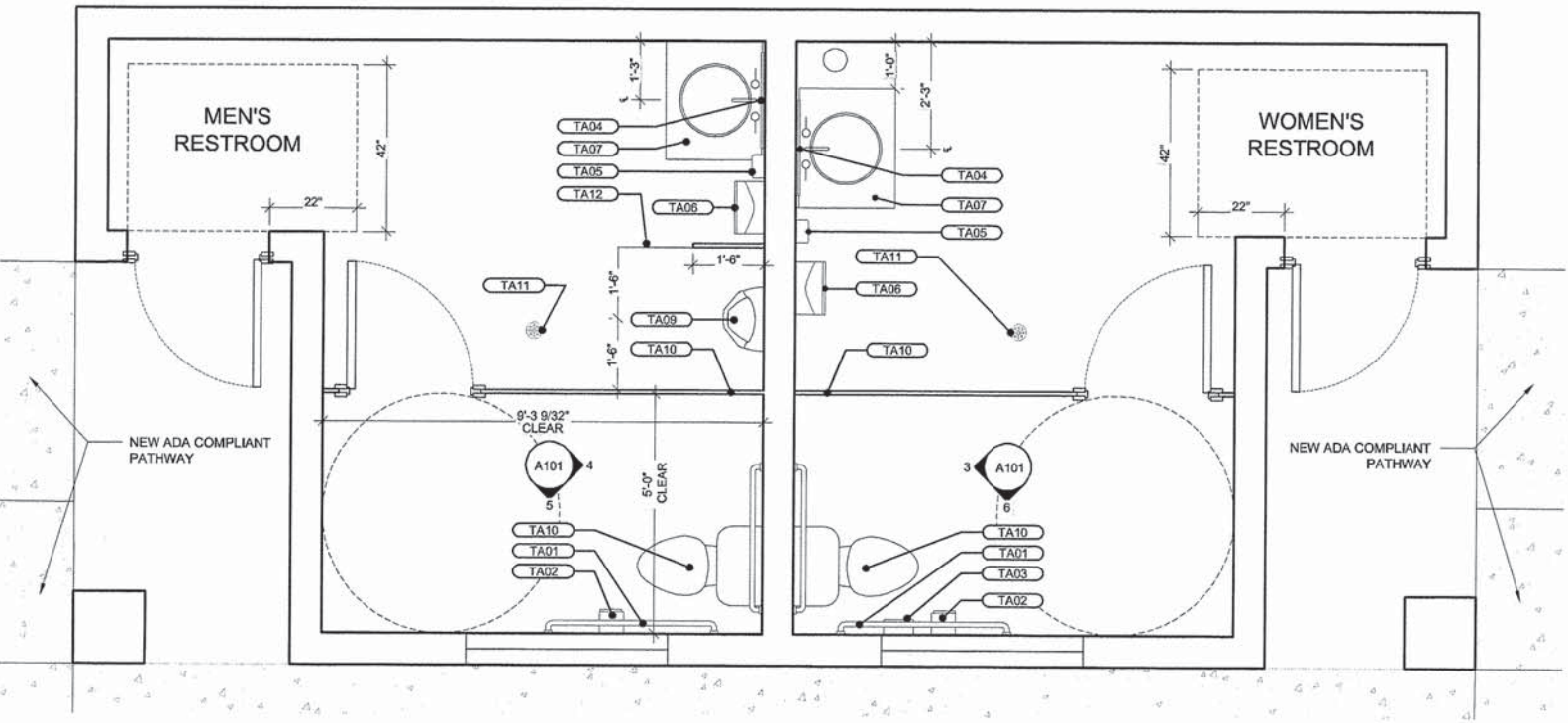
5 MEN'S RESTROOM SOUTH
A101 1/2" = 1'-0"



3 WOMEN'S RESTROOM WEST
A101 1/2" = 1'-0"



6 WOMEN'S RESTROOM SOUTH
A101 1/2" = 1'-0"



2 FIRST FLOOR PLAN
A101 1/2" = 1'-0"

COPYRIGHT
CTA INC.
ALL RIGHTS RESERVED
DRAWN BY: JD
CHECKED BY: RF
DATE: 04-10-2015
CTA # ALTONRIV_SB



RESTROOM RENOVATIONS

SHEET
A101