

06-12-2015 LETTING ITEM 237

STATE OF ILLINOIS  
DEPARTMENT OF TRANSPORTATION  
DIVISION OF HIGHWAYS  
**PROPOSED  
CONTRACT MAINTENANCE**

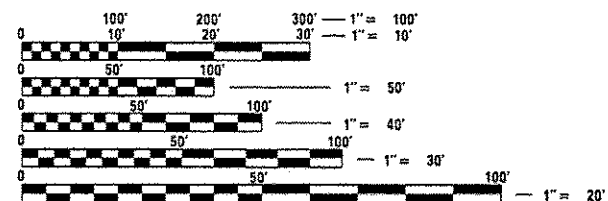
FAP 612 (IL 100)  
SECTION (112) I-3

SCHUYLER COUNTY

C-96-007-14

FOR INDEX OF SHEETS, SEE SHEET NO. 2

ADT = 850  
SU = 50  
MU = 90

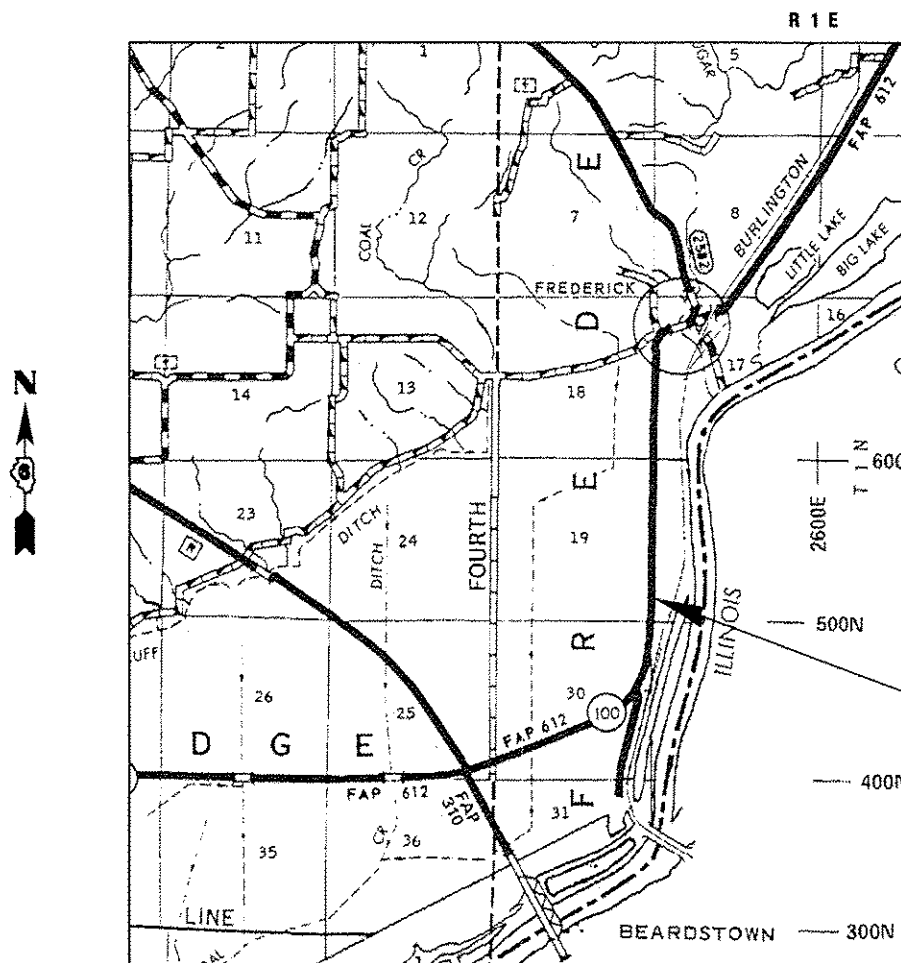


FULL SIZE PLANS HAVE BEEN PREPARED USING STANDARD  
ENGINEERING SCALES. REDUCED SIZED PLANS WILL NOT  
CONFORM TO STANDARD SCALES. IN MAKING MEASUREMENTS  
ON REDUCED PLANS, THE ABOVE SCALES MAY BE USED.

J.U.L.I.E.  
JOINT UTILITY LOCATION INFORMATION FOR EXCAVATION  
1-800-892-0123  
OR 811

PLAN AND CONTRACT TECHNICIAN  
TIMOTHY SHARP (217)782-7743

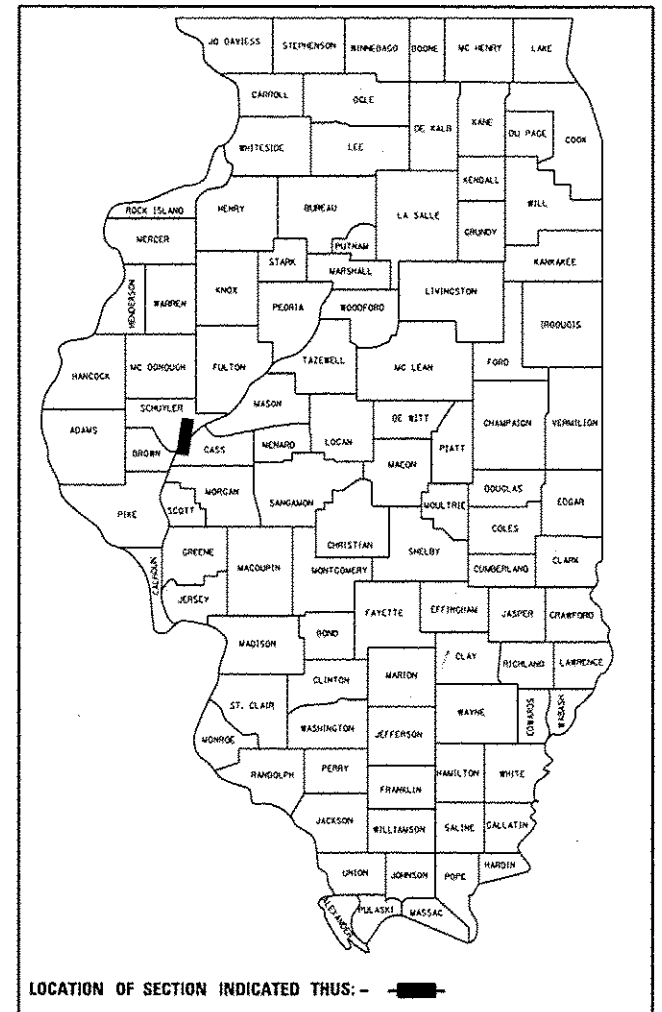
CONTRACT NO. 72G43



PROJECT LOCATION  
STA. 3 + 200.00

F.A.P. RTE.	SECTION	COUNTY	TOTAL SHEETS	SHEET NO.
612	(112) I-3	SCHUYLER	6	1
FED. ROAD DIST. NO.		ILLINOIS	CONTRACT NO. 72G43	

D-96-007-14



LOCATION OF SECTION INDICATED THUS: -

STATE OF ILLINOIS  
DEPARTMENT OF TRANSPORTATION  
DIVISION OF HIGHWAYS

SUBMITTED April 2, 2014  
Rop 2014  
DEPUTY DIRECTOR OF HIGHWAYS, REGION ENGINEER

May 9, 2014  
John D. Baranzelli, P.E.  
ENGINEER OF DESIGN AND ENVIRONMENT

May 9, 2014  
Omer Osman, P.E.  
DIRECTOR OF HIGHWAYS, CHIEF ENGINEER

PRINTED BY THE AUTHORITY  
OF THE STATE OF ILLINOIS

INDEX OF SHEETS

- 1. COVER
- 2. INDEX OF SHEETS, GENERAL NOTES, AND HIGHWAY STANDARDS
- 3. SUMMARY OF QUANTITIES
- 4. PLAN
- 5. TYPICAL SECTIONS
- 6. DETAILS

HIGHWAY STANDARDS

- 701001-02 OFF-RD OPERATIONS, 2L, 2W, MORE THAN 15' AWAY FROM EDGE OF PAVEMENT
- 701006-05 OFF-RD OPERATIONS, 2L, 2W, 15' TO 24" FROM EDGE OF PAVEMENT
- 701011-04 OFF-RD MOVING OPERATIONS, 2L, 2W, DAY ONLY
- 701901-04 TRAFFIC CONTROL DEVICES
- B.L.R. 21-9 TYPICAL APPLICATION OF TRAFFIC CONTROL DEVICES FOR CONSTRUCTION ON RURAL HIGHWAYS
- 701301-04 LANE CLOSURE, 2L, 2W, SHORT TIME OPERATIONS

GENERAL NOTES

- 1. ANY REFERENCE TO THE STANDARDS THROUGHOUT THE PLANS SHALL BE INTERPRETED TO BE THE LATEST STANDARDS OF THE DEPARTMENT AS INCLUDED IN THE PLANS.
- 2. TRENCH BACKFILL UNDER THE ROADWAY WILL BE COURSE AGGREGATE.
- 3. REMOVAL OF EXISTING FIELD TILE WILL BE INCLUDED WITH THE STORM SEWER AND NOT PAID FOR SEPARATELY.

STATE OF ILLINOIS  
DEPARTMENT OF TRANSPORTATION  
DIVISION OF HIGHWAYS  
DISTRICT 6

EXAMINED March 31 20 14  
Michael P. [Signature]  
ENGINEER OF OPERATIONS

EXAMINED MARCH 24 20 14  
[Signature]  
ENGINEER OF PROJECT IMPLEMENTATION

EXAMINED March 31 20 14  
2RM/1  
ENGINEER OF PROGRAM DEVELOPMENT

88.40 11.1

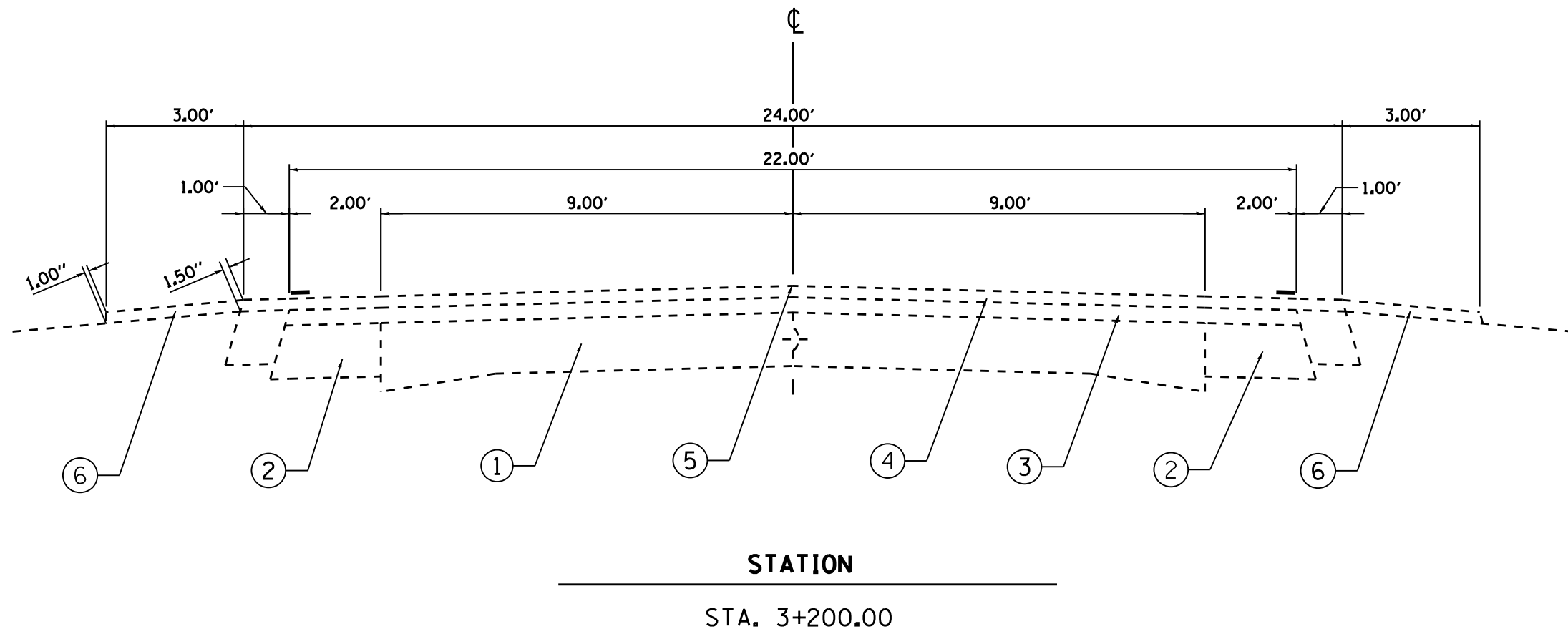
CODE NO.	ITEM	UNIT	TOTAL QUANTITY	CONSTR. CODE
				100% STATE
				ROADWAY
				0044 S. N.
20800150	TRENCH BACKFILL	CU YD	80	80
44201389	CLASS C PATCHES, TYPE II 13 INCH	SO YD	8	8
61101013	STORM SEWER PROTECTED, CLASS A, 12"	FOOT	54	54
61100605	MISCELLANEOUS CONCRETE	CU YD	1.5	1.5
61133100	FIELD TILE JUNCTION VAULT 2' DIAMETER	EACH	2	2
67100100	MOBILIZATION	L SUM	1	1
70101830	TRAFFIC CONTROL AND PROTECTION, STANDARD BLR 2.1	L SUM	1	1
20016702	DETOUR SIGNING	L SUM	1	1

8



PROJECT LOCATION  
STA. 3+200.00

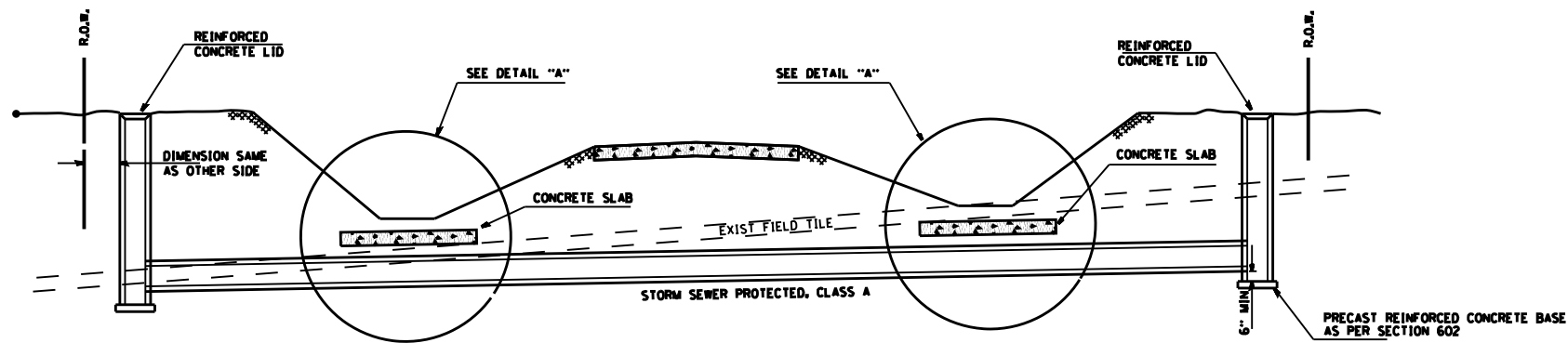
FILE NAME : c:\pe_work\pedit\sharptd\08358729\0672643-sht-plan.dgn Default	USER NAME : sharptd PLOT SCALE : 110.000000 ' / in. PLOT DATE : Apr-03-2014 10:33:48AM	DESIGNED -	REVISED -	STATE OF ILLINOIS DEPARTMENT OF TRANSPORTATION	PLAN			F.A.P. RTE.	SECTION	COUNTY	TOTAL SHEETS	SHEET NO.
		DRAWN -	REVISED -					612	(112) 1-3	SCHUYLER	6	4
		CHECKED -	REVISED -		SCALE: SHEET _ OF _ SHEETS STA. _ TO STA. _			CONTRACT NO. 72643				
		DATE -	REVISED -					ILLINOIS FED. AID PROJECT				



#### LEGEND

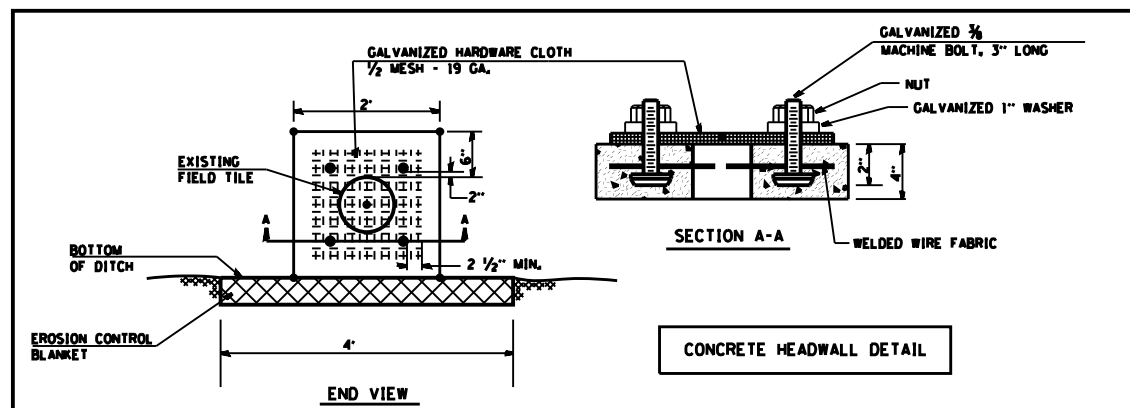
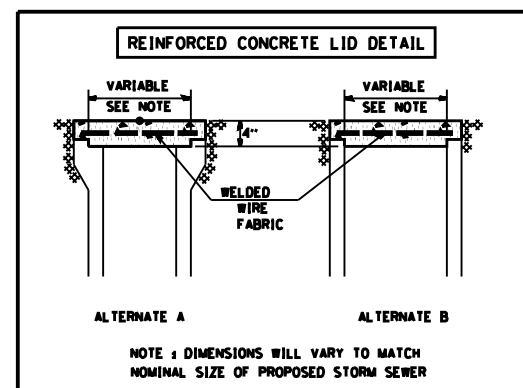
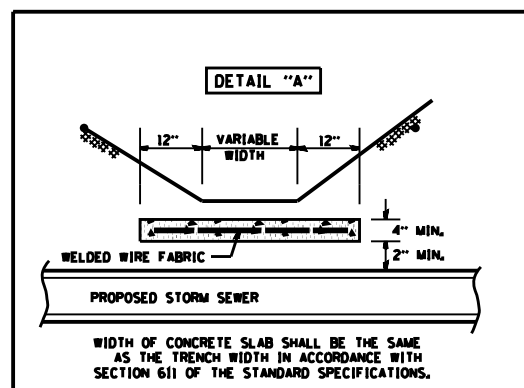
- ① EXIST. P.C.C. PAVEMENT 9-7-9"
- ② EXIST. BIT. CONC. WIDENING 8"
- ③ EXIST. BIT. CONC. OVERLAY 2"
- ④ EXIST. BIT. CONC. SURF. CSE., MIX. D, CL. I, TYPE 2 1/2"
- ⑤ EXIST. RAISED REF. PAVT. MARKERS
- ⑥ EXIST. AGG. SHOULDERS, TYPE B

FILE NAME =	USER NAME = sharptd	DESIGNED - ____	REVISED - ____	STATE OF ILLINOIS DEPARTMENT OF TRANSPORTATION	TYPICAL SECTION				F.A.P. RTE.	SECTION	COUNTY	TOTAL SHEETS	SHEET NO.
cl\pe\work\peidot\sharptd\08358729\0672G43-sht-typical.dgn	0672G43-sht-typical.dgn	DRAWN - ____	REVISED - ____						612	(112) 1-3	SCHUYLER	6	5
SHT_PLAN	PLOT SCALE = 3.0000' / in.	CHECKED - ____	REVISED - ____		SCALE: _____ SHEET . OF .1 SHEETS STA. _____ TO STA. _____				CONTRACT NO. 72G43				
	PLOT DATE = Apr-03-2014 10:34:34AM	DATE - ____	REVISED - ____						ILLINOIS FED. AID PROJECT				



#### GENERAL NOTES

1. FIELD TILE SHALL BE REPLACED IN ACCORDANCE WITH SECTION 611 OF THE STANDARD SPECIFICATIONS. THE COST PER CONTRACT UNIT PRICE OF ITEMS INCLUDED IN THIS CONTRACT SHALL BE PAID FOR AS STATED IN SECTION 611 OF THE STANDARD SPECIFICATIONS. IF THE CONTRACT UNIT PRICE IS NOT INCLUDED IN THIS CONTRACT, PAYMENT FOR THIS WORK WILL BE IN ACCORDANCE WITH ARTICLE 109.04 OF THE STANDARD SPECIFICATIONS.
2. THE DIAMETER OF THE PROPOSED STORM SEWER SHALL BE EQUAL TO OR GREATER THAN THE EXISTING FIELD TILE.
3. THE REINFORCED CONCRETE LID SHALL BE CLASS S1 MISCELLANEOUS CONCRETE OR PRECAST REINFORCED CONCRETE.
4. FIELD TILES LESS THAN 7" DIAMETER INTERCEPTED BY THE BACKSLOPE SHALL BE CRUSHED AND REMAIN IN PLACE UNDER THE ROADBED. INTERCEPTED FIELD TILES 7" OR LARGER IN DIAMETER SHALL BE REMOVED AND BACKFILLED IN ACCORDANCE WITH ARTICLE 611.03.



FILE NAME =	USER NAME =	DESIGNED -	REVISED -	STATE OF ILLINOIS DEPARTMENT OF TRANSPORTATION	DETAILS		F.A.P. RTE.	SECTION	COUNTY	TOTAL SHEETS	SHEET NO.
cl\pe\work\peidot\sharptd\08358729\05029miscd07.dgn	miscd07.dgn	DRAWN -	REVISED -				612	(112) 1-3	SCHUYLER	6	6
PLOT SCALE = 120.0000' / in.	PLOT DATE = Apr-03-2014 10:35:28AM	CHECKED -	REVISED -		SCALE: SHEET OF 1 SHEETS STA. TO STA.		CONTRACT NO. 72643				
SHT.PLAN		DATE -	REVISED -				ILLINOIS FED. AID PROJECT				