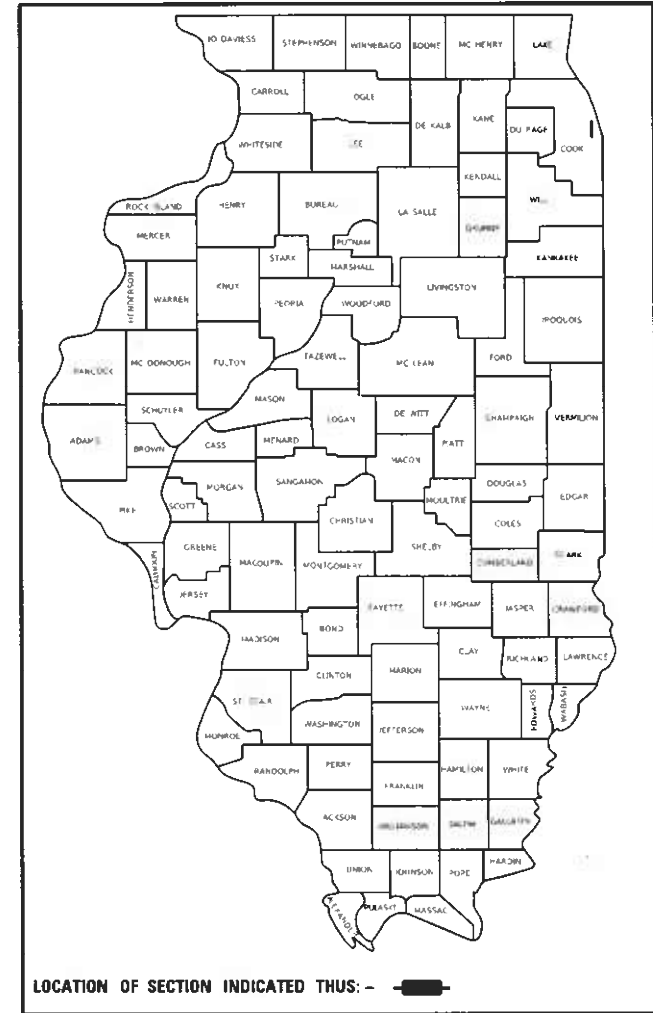


STATE OF ILLINOIS
DEPARTMENT OF TRANSPORTATION

F.A. RTE	SECTION	COUNTY	TOTAL SHEETS	SHEET NO.
*	2019-152-1	COOK	31	1
		ILLINOIS	CONTRACT NO. 62K35	

* 1) F.A.P. 342
2) F.A.I. 9094

0-91-325-20



FOR INDEX OF SHEETS, SEE SHEET NO. 2

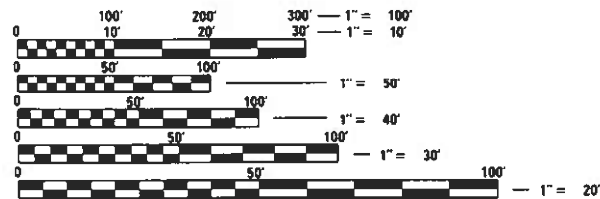
IMPROVEMENT IS LOCATED IN THE VILLAGES OF
ARLINGTON HEIGHTS, PALATINE, ROLLING MEADOWS
AND CITY OF CHICAGO.

**PROPOSED
HIGHWAY PLANS**

FAP ROUTE 342: IL 53
SOUTH OF US 12 (RAND RD) TO IL 62 (ALGONQUIN RD)
FAI 90/94: I-90/94
AT FULTON MARKET STREET
SECTION 2019-152-1
PERMANENT PROTECTIVE SHIELDING
COOK COUNTY
C-91-119-20

TRAFFIC DATA

<u>IL 53</u> 2018 ADT = 142800 POSTED SPEED LIMIT=55 MPH	<u>PALATINE RD</u> 2018 ADT = 39800 POSTED SPEED LIMIT=45 MPH
<u>I-90/94</u> 2018 ADT = 254800 POSTED SPEED LIMIT=55 MPH	<u>US 14</u> 2019 ADT = 20200 POSTED SPEED LIMIT=40 MPH
<u>IL 62</u> 2019 ADT = 33000 POSTED SPEED LIMIT=35 MPH	<u>KIRCHOFF RD</u> 2018 ADT = 8800 POSTED SPEED LIMIT=35 MPH
<u>FULTON MARKET STREET</u> 2018 ADT = 2500 POSTED SPEED LIMIT=30 MPH	<u>ANDERSON DRIVE</u> 2018 ADT = N/A POSTED SPEED LIMIT=25 MPH



FULL SIZE PLANS HAVE BEEN PREPARED USING STANDARD ENGINEERING SCALES. REDUCED SIZED PLANS WILL NOT CONFORM TO STANDARD SCALES. IN MAKING MEASUREMENTS ON REDUCED PLANS, THE ABOVE SCALES MAY BE USED.

J.U.L.I.E.
JOINT UTILITY LOCATION INFORMATION FOR EXCAVATORS
1-800-892-0123
OR 811

G.U.A.N.
CHICAGO UTILITY ALERT NETWORK
1-312-744-7000

PROJECT ENGINEER: MIDY, J. ALAIN (847) 221-3056
PROJECT MANAGER: AQUEEL, FAWAD (847) 705-4247
CONTRACT NO. 62K35

VARIOUS LOCATIONS

SEE SHEETS 4 THROUGH 24

STATE OF ILLINOIS
DEPARTMENT OF TRANSPORTATION

SUBMITTED FEBRUARY 5, 2020
[Signature] REGIONAL ENGINEER
May 8, 2020
[Signature] ENGINEER OF DESIGN AND ENVIRONMENT
May 8, 2020
[Signature] DIRECTOR OF HIGHWAYS PROJECT IMPLEMENTATION

PRINTED BY THE AUTHORITY
OF THE STATE OF ILLINOIS

2) SN 016-0373 NB
3) SN 016-0970 SB
IL 53 OVER
PALATINE RD

1) SN 016-0372
IL 53 NEAR
ANDERSON DR

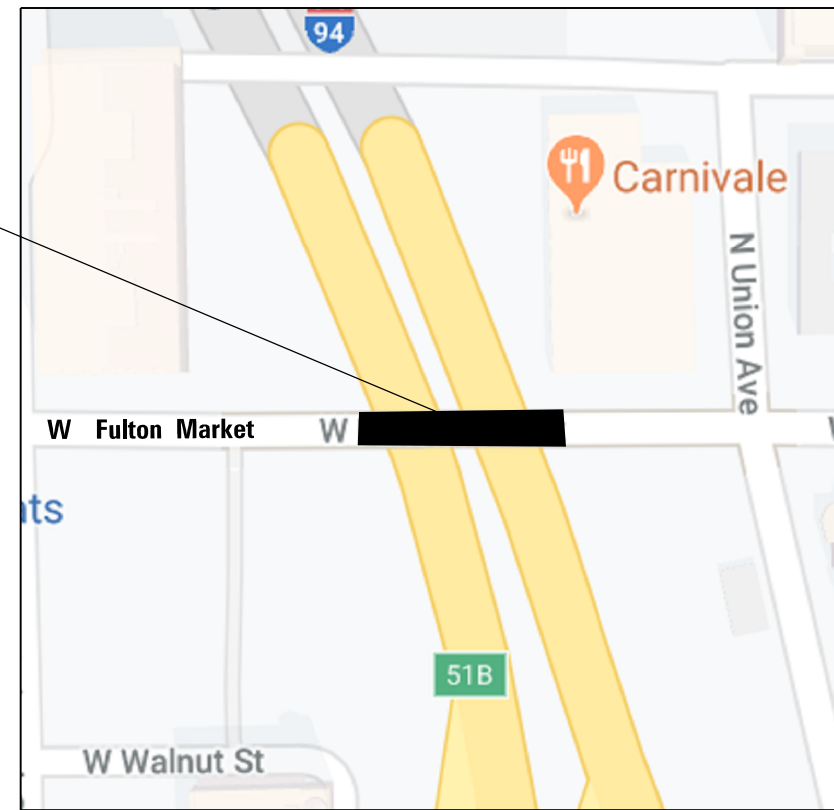
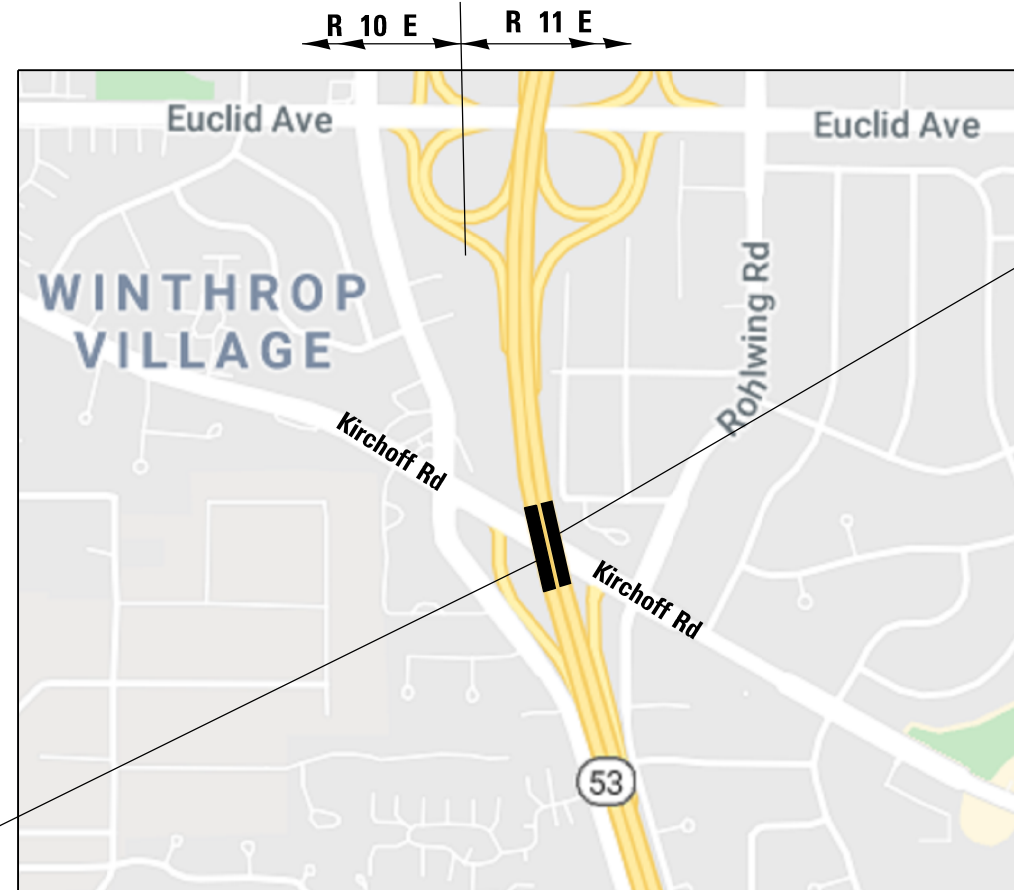
4) SN 016-0374 NB
5) SN 016-1119 SB
IL 53 OVER
US 14 AND RR

7) SN 016-1121 SB
IL 53 OVER
KIRCHOFF RD

8) SN 016-0378 NB
9) SN 016-2133 SB
IL 53 OVER IL 62

6) SN 016-0376 NB
IL 53 OVER
KIRCHOFF RD

10) SN 016-2051
FULTON MARKET ST
OVER I-90



**VILLAGES OF ARLINGTON HEIGHTS, PALATINE, ROLLING MEADOWS
WHEELING, PALATINE AND ELK GROVE TOWNSHIPS**

**VILLAGE OF ROLLING MEADOWS
PALATINE TOWNSHIP
R 14 E**

**CITY OF CHICAGO
WEST CHICAGO TOWNSHIP**

* 1) F.A.P. 342
2) F.A.I. 9094

MODEL: Default
FILE: \\nas01c.psw.ibm.com\data\links\gov\pww\DOT\Documents\DOT_Offices\Director_1\Projects\132570\CADD\data\Design\132570-xxx-xxx-sht-ubn.dgn

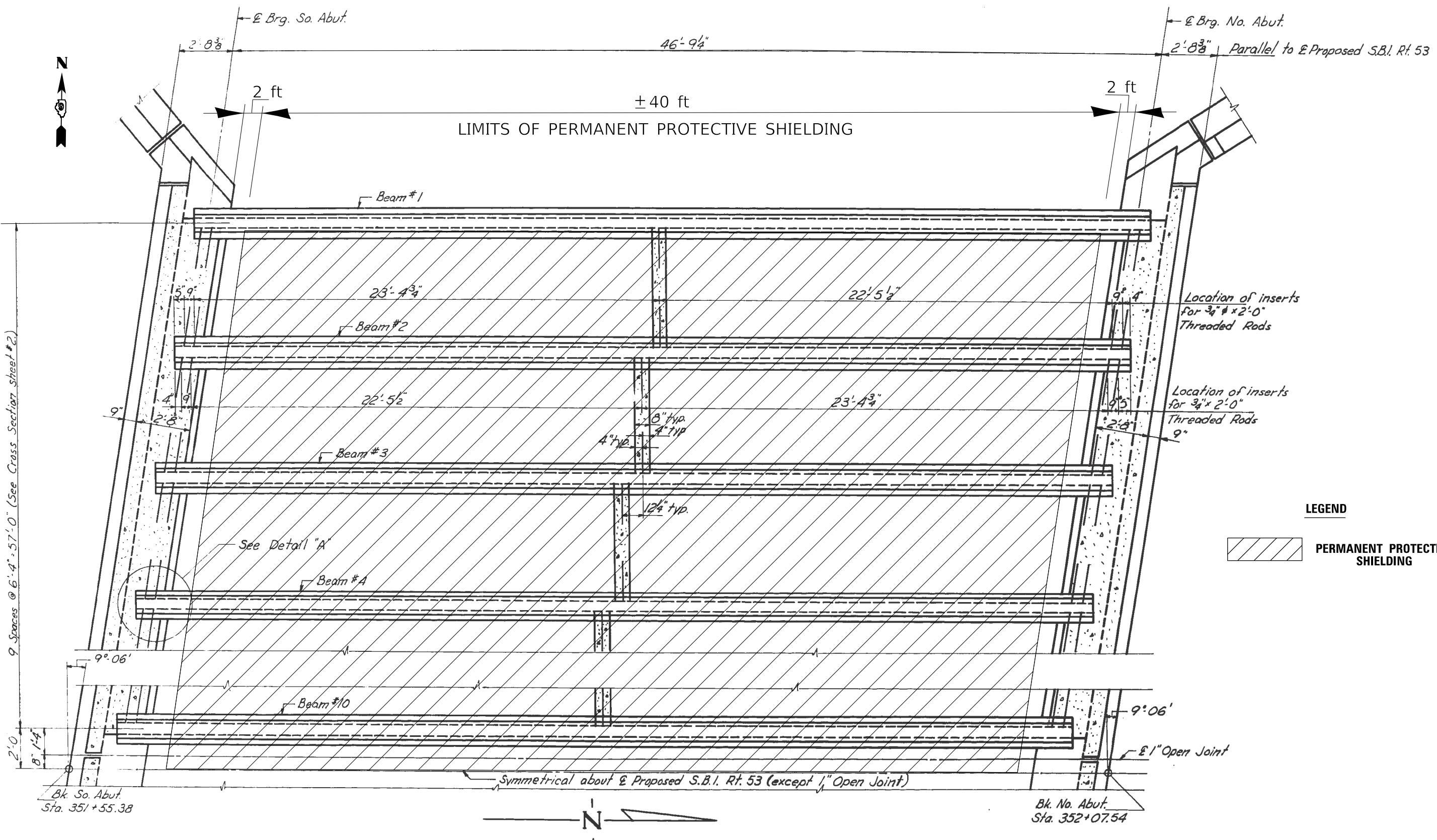
USER NAME = gorenautab	DESIGNED -	REVISED -
	DRAWN -	REVISED -
PLOT SCALE = 100,0000' / in.	CHECKED -	REVISED -
PLOT DATE = 1/31/2020	DATE -	REVISED -

**STATE OF ILLINOIS
DEPARTMENT OF TRANSPORTATION**

**LOCATION MAPS. 1) IL 53 S.OF US 12 (RAND RD) TO IL 62
(ALGONQUIN RD). 2) I-90/94 AT FULTON ST.**

SCALE: SHEET OF SHEETS STA. TO STA.

F.A. RTE.	SECTION	COUNTY	TOTAL SHEETS	SHEET NO.
*	2019-152-I	COOK	31	4
CONTRACT NO. 62K35				
ILLINOIS FED. AID PROJECT				



TOTAL PROPOSED AMOUNT OF PERMANENT SHIELDING FOR SN 016-0372 IS 525 sq. yd.

FRAMING PLAN

MODEL: Default
 FILE: \\blancom.dia.illinois.gov\PI\DOT\Documents\DOT_Offices\Director_1\Projects\01325270\CADD\Drawings\Design\01xxxxx\shlt-uban.dgn

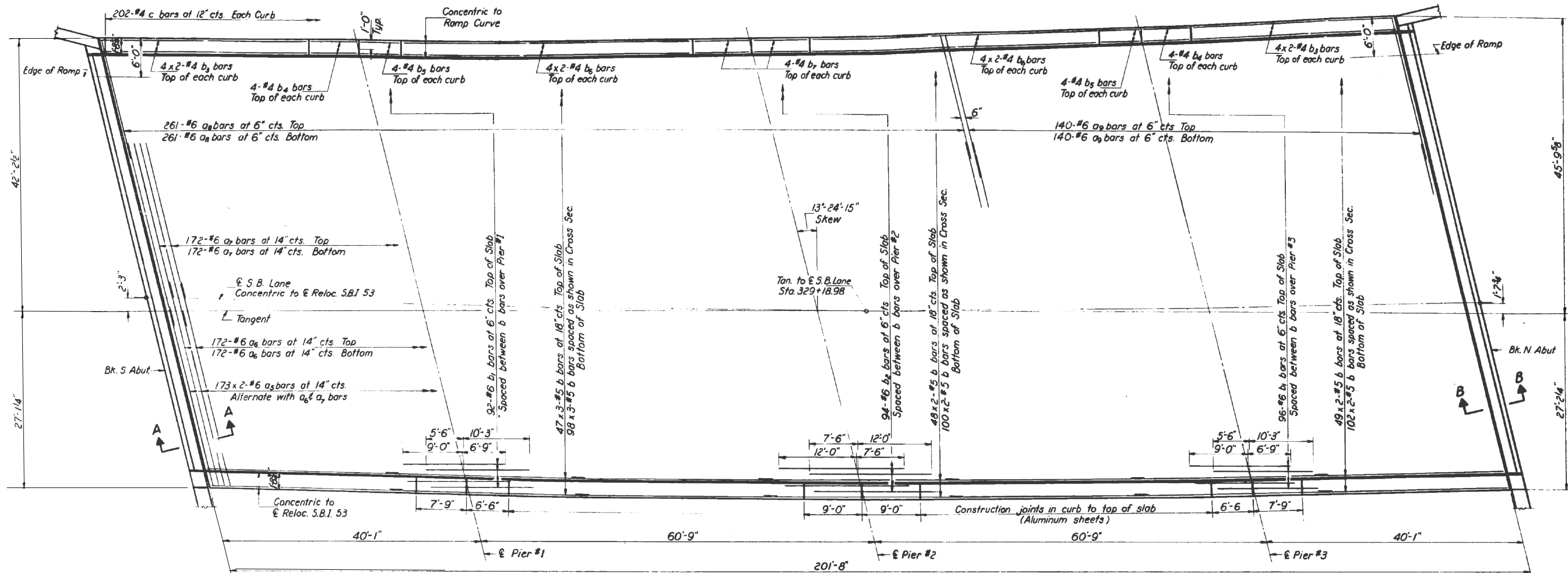
USER NAME = gorenautab	DESIGNED -	REVISED -
	DRAWN -	REVISED -
PLOT SCALE = 100,0000' / in.	CHECKED -	REVISED -
PLOT DATE = 2/6/2020	DATE -	REVISED -

STATE OF ILLINOIS
DEPARTMENT OF TRANSPORTATION

LOCATION 1	
SN 016-0372. IL 53 NEAR ANDERSON DR. FRAMING PLAN	
SCALE:	SHEET 2 OF 2 SHEETS STA. TO STA.

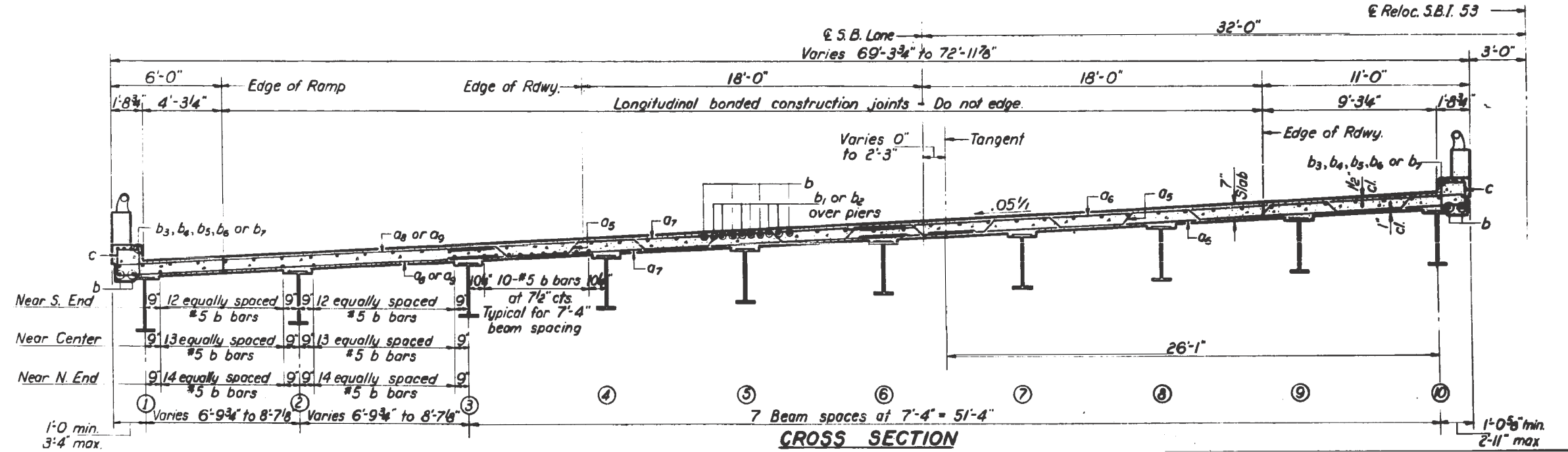
* 1) F.A. P. 342
2) F.A.I. 9094

F.A. RTE.	SECTION	COUNTY	TOTAL SHEETS	SHEET NO.
*	2019-152-I	COOK	31	6
CONTRACT NO. 62K35				
ILLINOIS FED. AID PROJECT				



PLAN

FOR INFORMATION ONLY



CROSS SECTION

* 1) F.A. P. 342
2) F.A.I. 9094

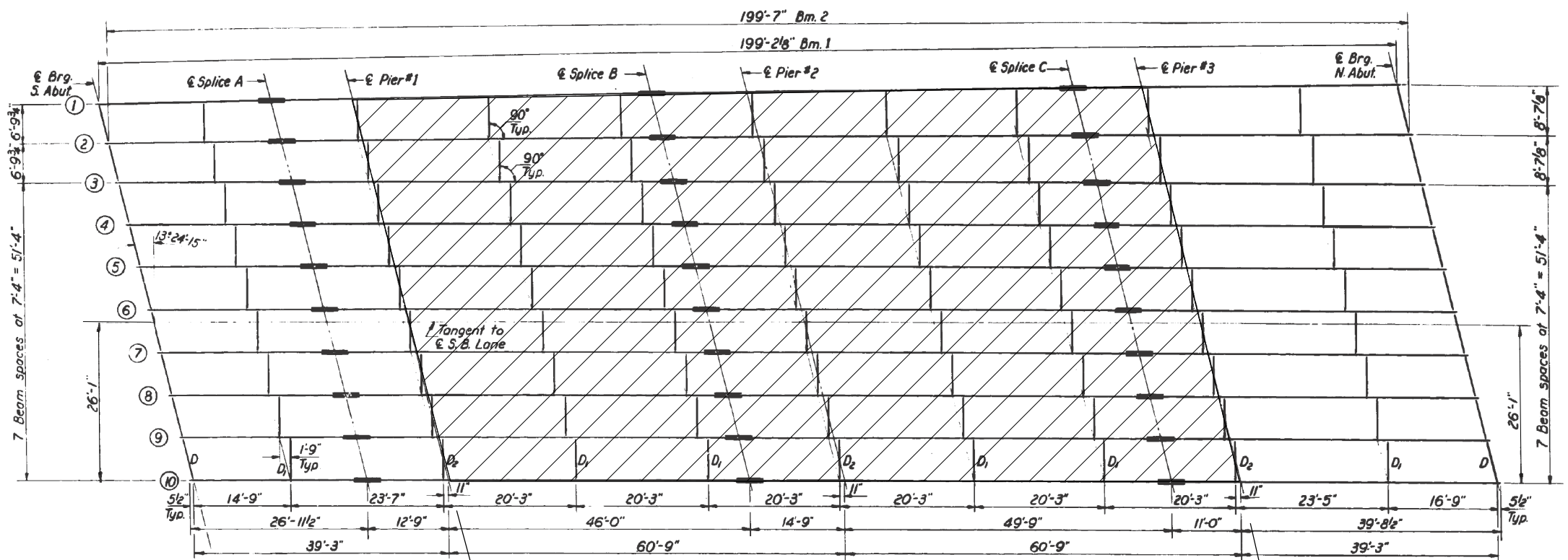
MODEL: Default
 FILE: \\p101\barcom\da\allink\gpc\PROJECTS\DOT\Documents\DOT - Office\District 1\Projects\132520\CADD\Drawings\132520-SB-IL-53-PLAN-3.dwg
 PROJECT: 132520 SB-IL-53 OVER PALATINE RD. PLAN AND CROSS SECTION

USER NAME = gorenautab	DESIGNED -	REVISED -
DRAWN -	REVISOR -	
PLOT SCALE = 100,0000' / in.	CHECKED -	REVISOR -
PLOT DATE = 2/6/2020	DATE -	REVISOR -

STATE OF ILLINOIS
DEPARTMENT OF TRANSPORTATION

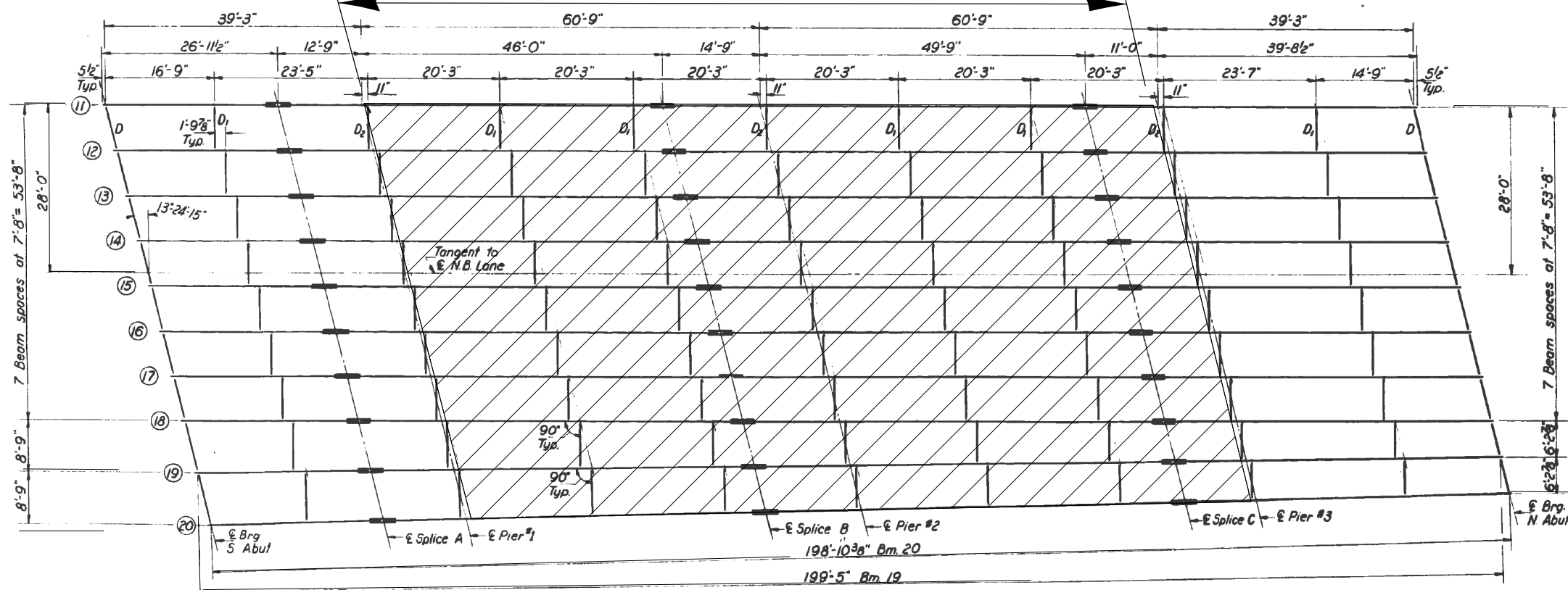
LOCATION 3
SN 016-0970 SB. IL 53 OVER PALATINE RD. PLAN AND CROSS SECTION
SCALE: SHEET 1 OF 2 SHEETS STA. TO STA.

F.A. RTE.	SECTION	COUNTY	TOTAL SHEETS	SHEET NO.
*	2019-152-I	COOK	31	8
CONTRACT NO. 62K35			ILLINOIS FED. AID PROJECT	



FRAMING PLAN ~ S.B. LANE SN 016-0970 SB
All Beams 33WF118

LIMITS OF PERMANENT PROTECTIVE SHIELDING 121.5 ft



FRAMING PLAN ~ N.B. LANE SN 016-0373 NB
All Beams 33WF118

TOTAL PROPOSED AMOUNT OF PERMANENT SHIELDING FOR SN 016-0373 IS 925 sq. yd.
TOTAL PROPOSED AMOUNT OF PERMANENT SHIELDING FOR SN 016-0970 IS 895 sq. yd.

LEGEND

 PERMANENT PROTECTIVE SHIELDING



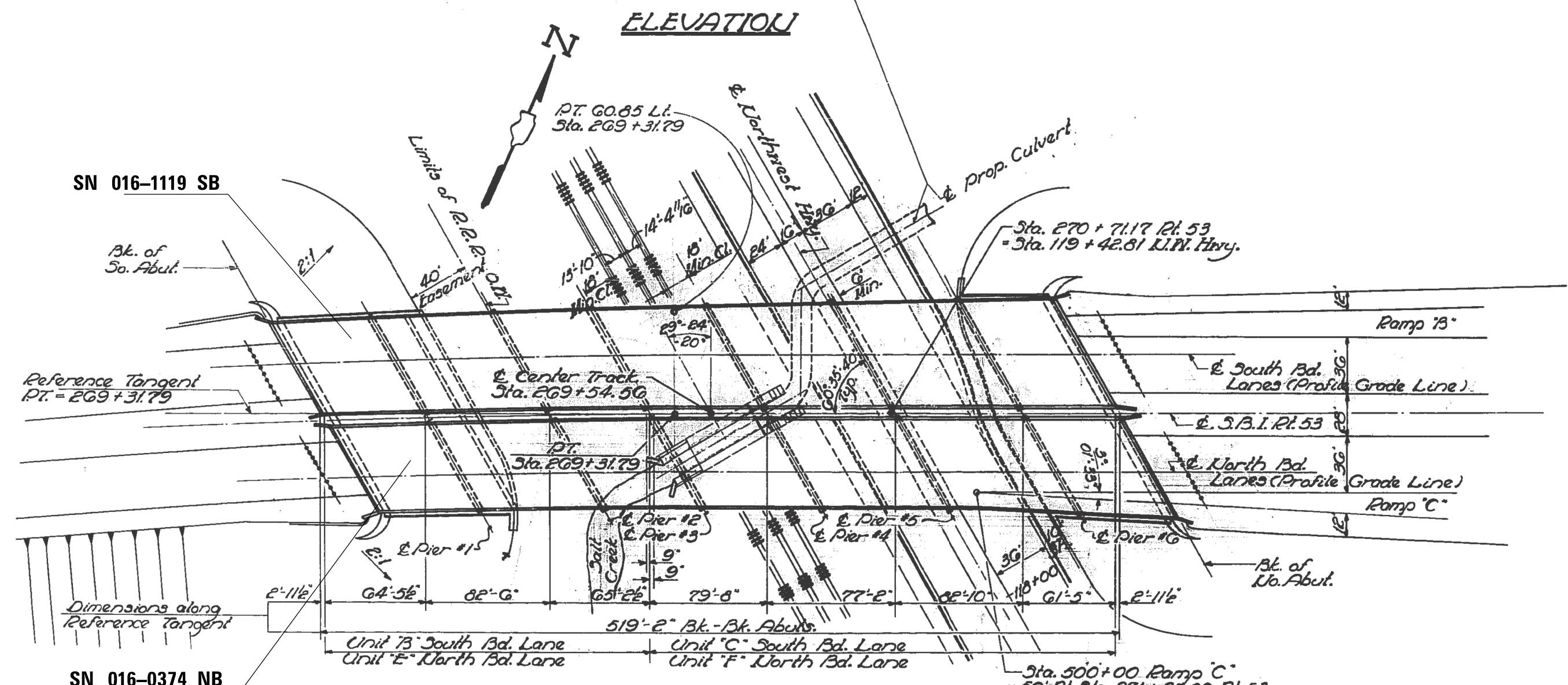
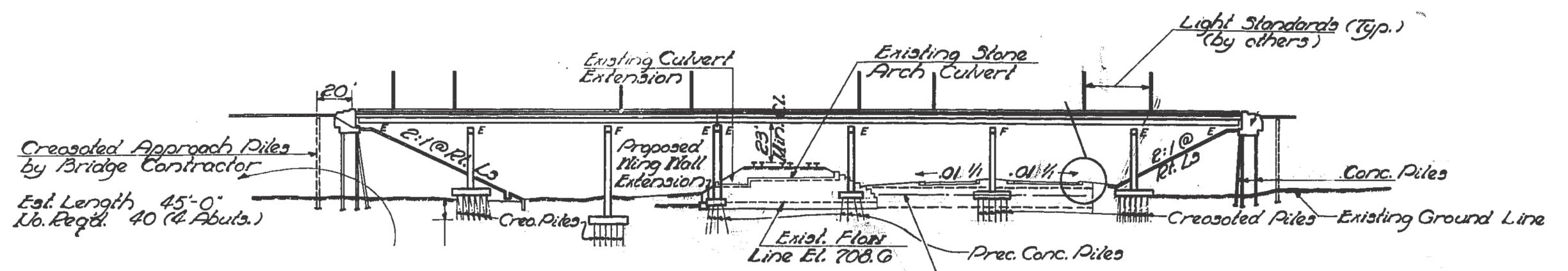
MODEL: Default
FILE: \\blm\c:\pub\blm\room\dat\illinois\pww\DOT\Documents\DOT_Offices\Drawings\1\Projects\132520\CADD\Drawings\Design\01xxxxx-sht-blm.dgn

USER NAME = gorenautab	DESIGNED -	REVISED -
DRAWN -	REVISED -	REVISED -
PLOT SCALE = 100,0000' / in.	CHECKED -	REVISED -
PLOT DATE = 2/6/2020	DATE -	REVISED -

**STATE OF ILLINOIS
DEPARTMENT OF TRANSPORTATION**

LOCATION 2 AND 3
2)SN 016-0373; 3)SN 016-0970. IL 53 OVER PALATINE RD. FRAMING PLAN
SCALE: SHEET 2 OF 2 SHEETS STA. TO STA.

* 1) F.A.P. 342 2) F.A.I. 9094	F.A. RTE.	SECTION	COUNTY	TOTAL SHEETS	SHEET NO.
*	2019-152-I	COOK	31	9	
					CONTRACT NO. 62K35
					ILLINOIS FED. AID PROJECT



FOR INFORMATION ONLY

MODEL: Default
 FILE: \\nas01\proj\pub\arcom\dat\illinois\gov\pww\DOT\Documents\IBDOT_Offices\Dir\ref_1\Project\ID132570\CADD\Drawings\Design\1\1119x0374\sb-ebn.dwg

USER NAME = gorenautab	DESIGNED -	REVISED -
	DRAWN -	REVISED -
PLOT SCALE = 100,0000' / in.	CHECKED -	REVISED -
PLOT DATE = 2/6/2020	DATE -	REVISED -

STATE OF ILLINOIS
 DEPARTMENT OF TRANSPORTATION

LOCATION 4 AND 5
 4) SN 016-0374 NB; 5) SN 016-1119 SB. OVER US 14 AND RR. PLAN

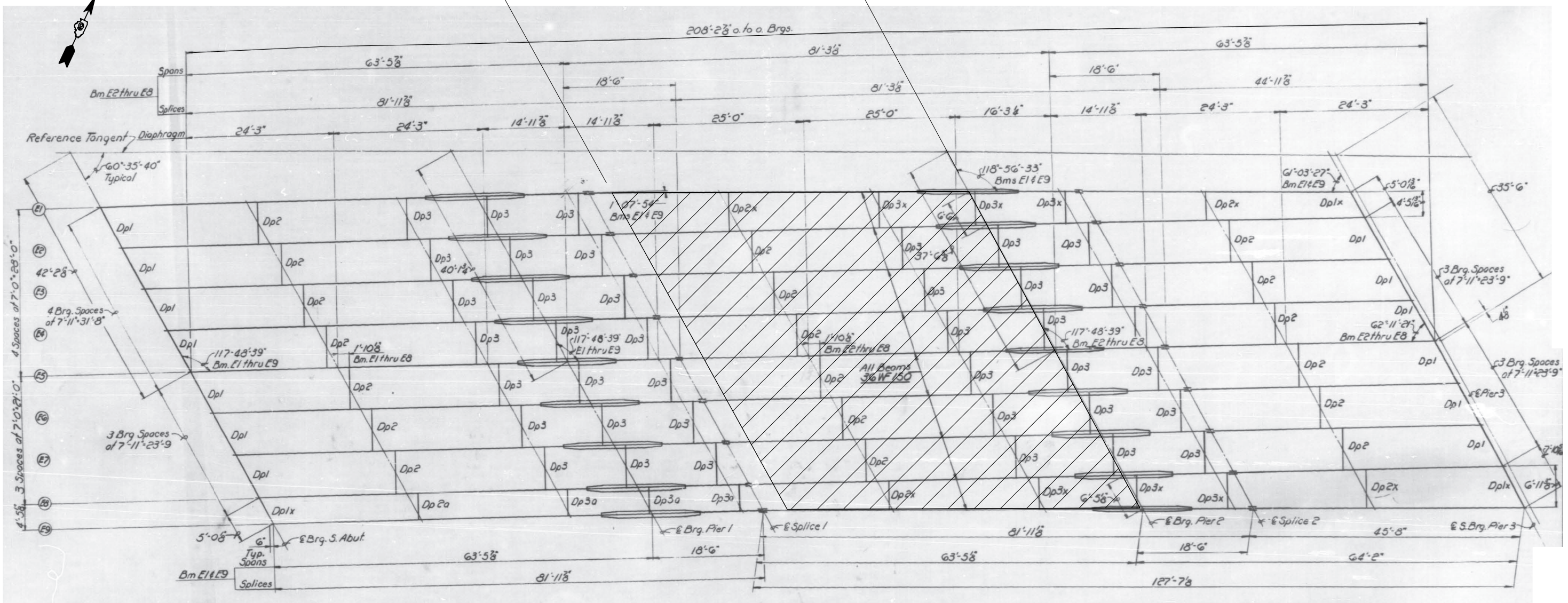
* 1) F.A.P. 342
 2) F.A.I. 9094

F.A. RTE.	SECTION	COUNTY	TOTAL SHEETS	SHEET NO.
*	2019-152-I	COOK	31	10
CONTRACT NO. 62K35				
ILLINOIS FED. AID PROJECT				

SCALE: SHEET 1 OF 4 SHEETS STA. TO STA.



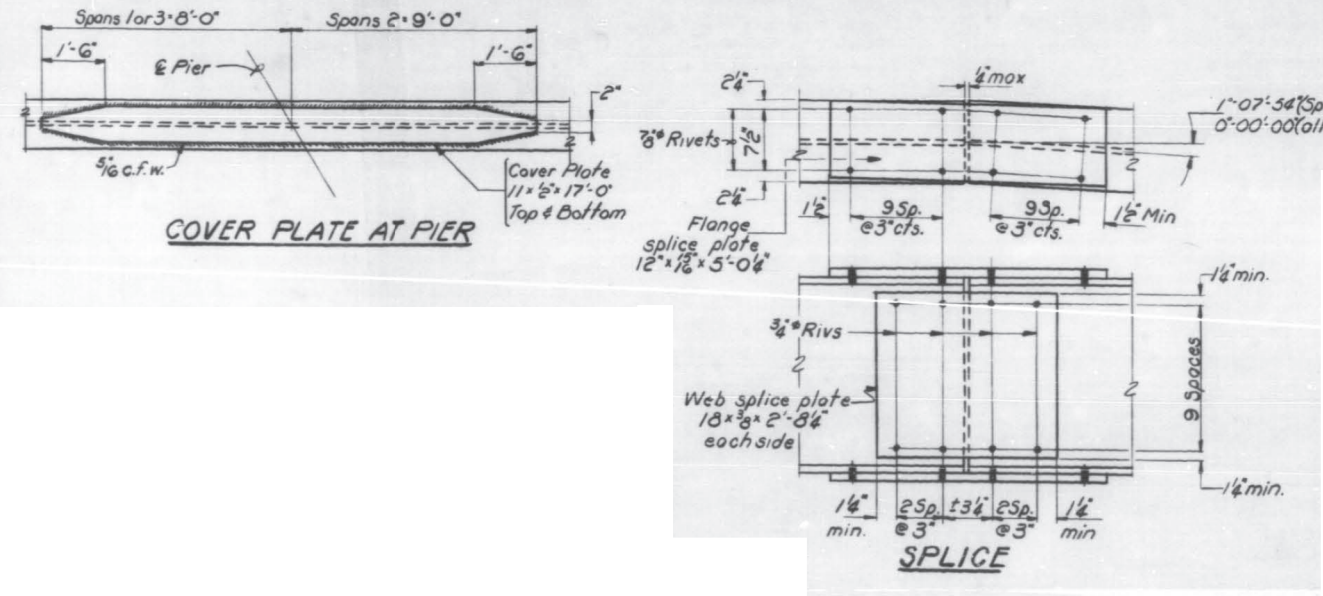
± 50 ft
LIMITS OF PERMANENT
PROTECTIVE SHIELDING



STRUCTURAL STEEL LAYOUT
UNIT E

**TOTAL PROPOSED AMOUNT OF PERMANENT SHIELDING
FOR UNITS "E" AND "F" IS 1691 sq. yd.**

**TOTAL PROPOSED AMOUNT OF PERMANENT SHIELDING
FOR UNITS "B" AND "C" IS 1412 sq. yd.**



LEGEND

PERMANENT PROTECTIVE SHIELDING

* 1) F.A. P. 342
2) F.A.I. 9094

MODEL: D:\default...
 FILE: 2019152-1...
 PROJECT: 2019152-1...
 OFFICE: DISTRICT...
 DRAWN: ...
 CHECKED: ...
 DATE: 2/16/2020

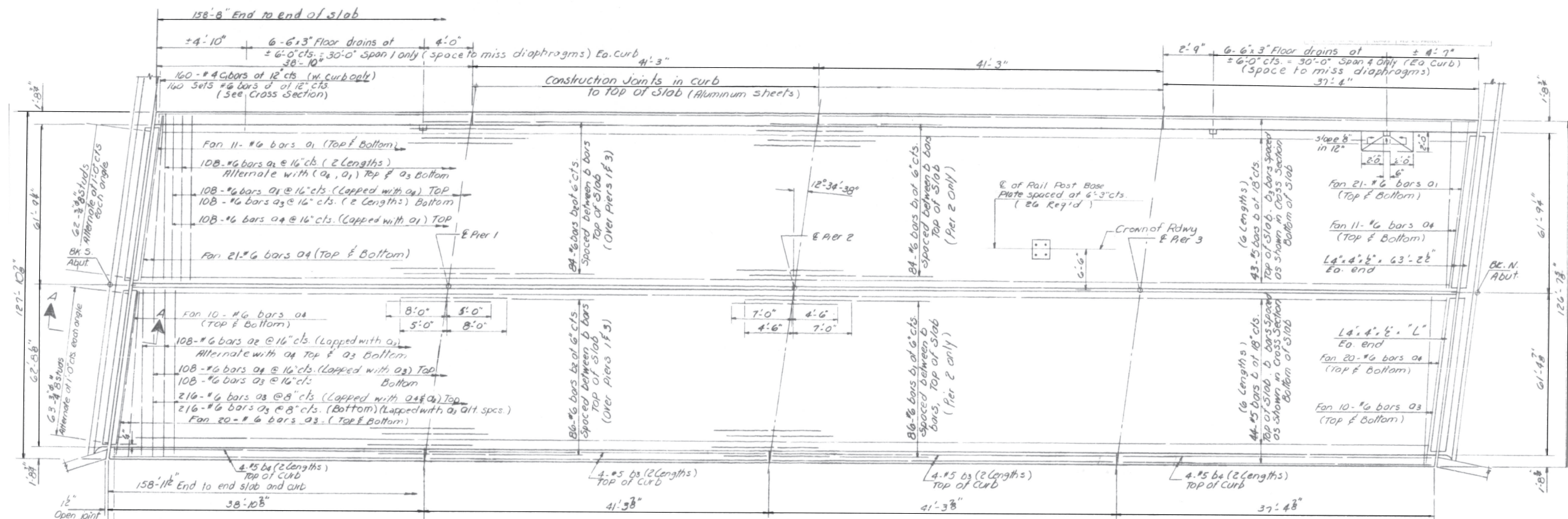
USER NAME = gorengautab	DESIGNED -	REVISED -
PLOT SCALE = 100,000' / in.	DRAWN -	REVISED -
PLOT DATE = 2/16/2020	CHECKED -	REVISED -
	DATE -	REVISED -

**STATE OF ILLINOIS
DEPARTMENT OF TRANSPORTATION**

LOCATION 4
SN 016-0374 NB OVER US 14 AND RR. STRUCTURAL STEEL LAYOUT

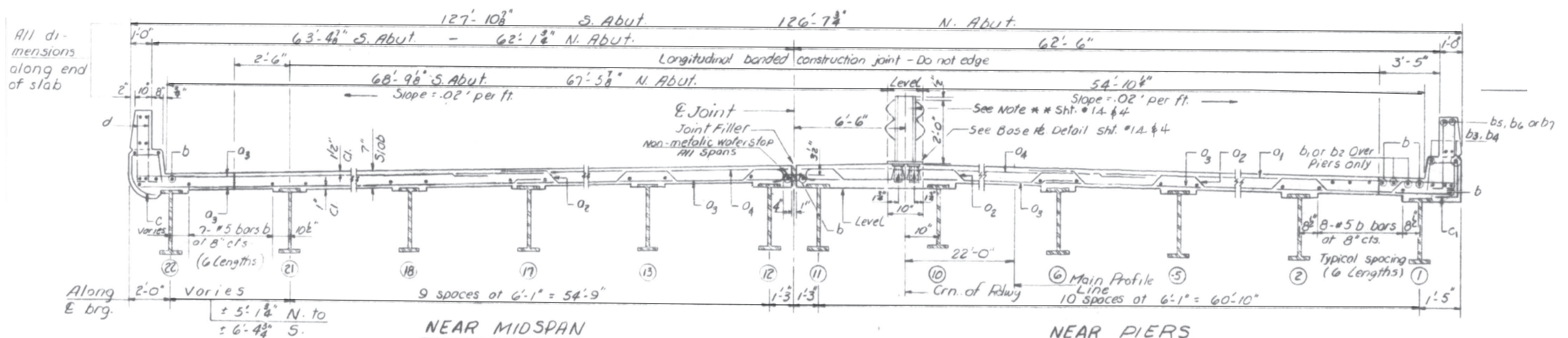
F.A. RTE.	SECTION	COUNTY	TOTAL SHEETS	SHEET NO.
*	2019-152-1	COOK	31	12
CONTRACT NO. 62K35				
ILLINOIS FED. AID PROJECT				

SCALE: SHEET 3 OF 4 SHEETS STA. TO STA.



PLAN
EAST BRIDGE. SN 016-0378 NB

FOR INFORMATION ONLY



CROSS SECTION
(Looking South)

* 1) F.A. P. 342
2) F.A.I. 9094

MODEL: Default
 FILE: \\blm\c:\pwworkspace\blm\blm\proj\016-0378\016-0378.dwg
 PROJECT: 016-0378 NB OVER IL 62
 USER: gorenautab
 DATE: 2/6/2020

USER NAME = gorenautab	DESIGNED -	REVISED -
DRAWN -	REVISED -	
PLOT SCALE = 100,0000' / in.	CHECKED -	REVISED -
PLOT DATE = 2/6/2020	DATE -	REVISED -

STATE OF ILLINOIS
DEPARTMENT OF TRANSPORTATION

LOCATION 8
SN 016-0378 NB OVER IL 62. PLAN & CROSS SECTION.

SCALE: SHEET 1 OF 2 SHEETS STA. TO STA.

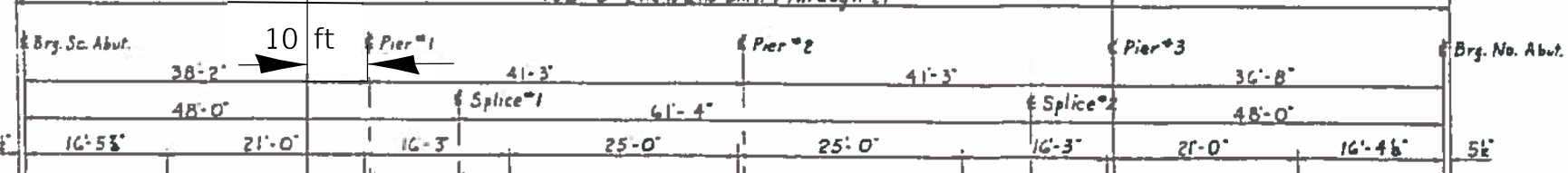
F.A. RTE.	SECTION	COUNTY	TOTAL SHEETS	SHEET NO.
*	2019-152-I	COOK	31	19
CONTRACT NO. 62K35				
ILLINOIS FED. AID PROJECT				

92.6 ft

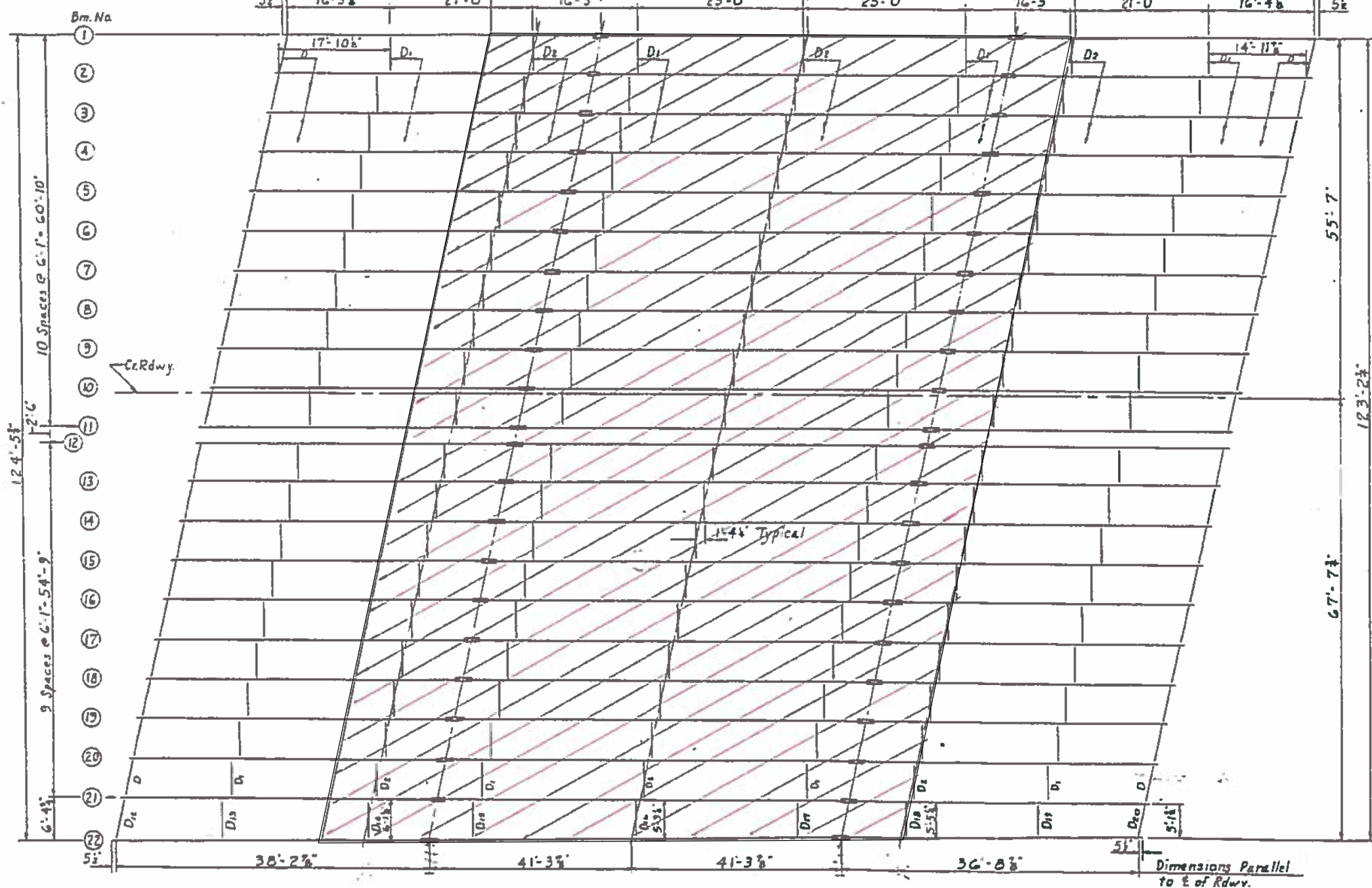
LIMITS OF PERMANENT PROTECTIVE SHIELDING



150'-3" End to End Bms. 1 Through 21



TOTAL PROPOSED AMOUNT OF PERMANENT SHIELDING FOR SN 016-2133 IS sq. yd.



LEGEND



EAST BRIDGE. STRUCTURAL STEEL LAYOUT
SN 016-0378 NB. ALL BEAMS 24WF 84.

* 1) F.A.P. 342
2) F.A.I. 9094

MODEL: Default
FILE: Model: P:\pub\baronm.d\at\links.gcp\PI\DOT\Documents\DOT_Offices\Director_1\Projects\132520\CADD\Design\132520-Sub-Plan.dwg

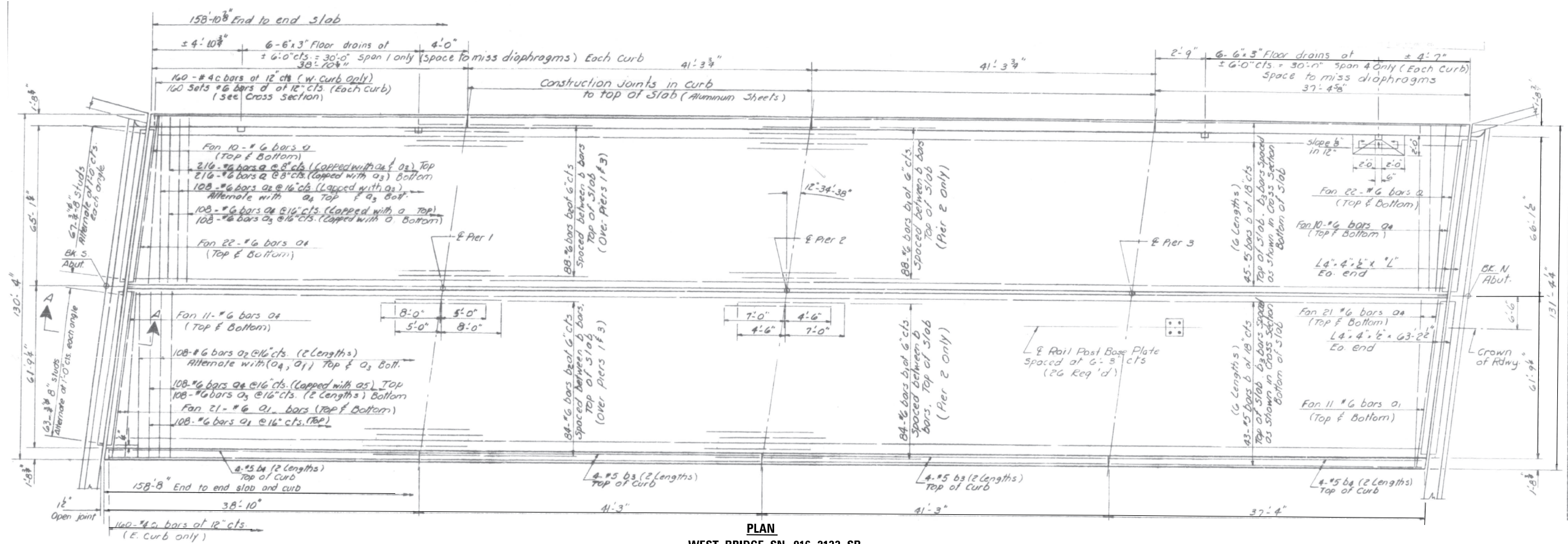
USER NAME = gorenautab	DESIGNED -	REVISED -
	DRAWN -	REVISED -
PLOT SCALE = 100.0000' / in.	CHECKED -	REVISED -
PLOT DATE = 2/6/2020	DATE -	REVISED -

STATE OF ILLINOIS
DEPARTMENT OF TRANSPORTATION

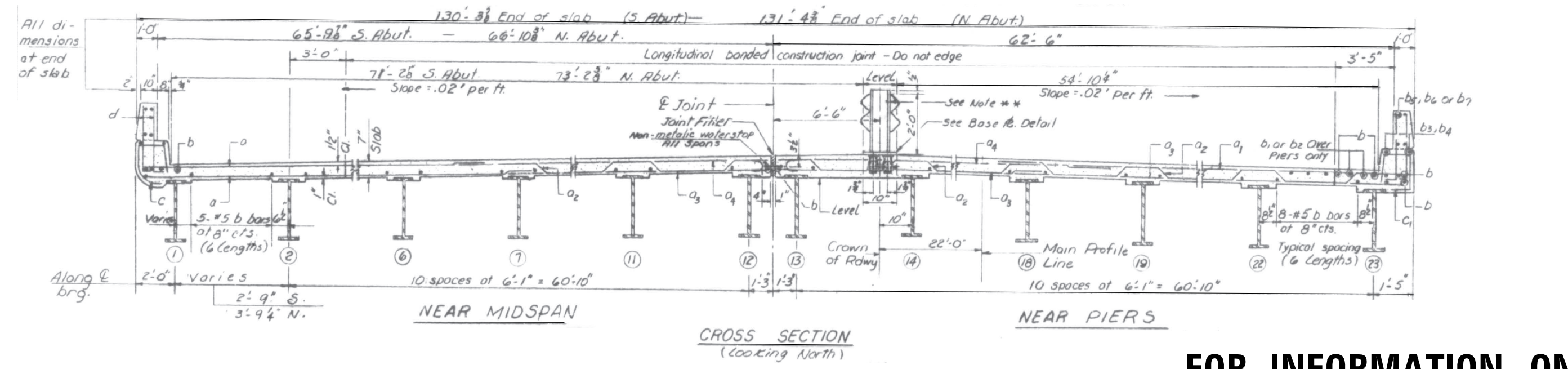
LOCATION 8
SN 016-0378 NB OVER IL 62. STRUCTURAL STEEL LAYOUT.

SCALE: SHEET 2 OF 2 SHEETS STA. TO STA.

F.A. RTE.	SECTION	COUNTY	TOTAL SHEETS	SHEET NO.
*	2019-152-I	COOK	31	20
CONTRACT NO. 62K35				
ILLINOIS FED. AID PROJECT				



PLAN
WEST BRIDGE, SN 016-2133 SB



CROSS SECTION
(Looking North)

FOR INFORMATION ONLY

* 1) F.A.P. 342
2) F.A.I. 9094

MODEL: Default
 FILE: \\blm\c:\pwworkspace\blm\projects\2019\2019-152-4\CADD\Drawings\Design\1\016-2133 SB\016-2133 SB Plan.dwg
 PROJECT: 2019-152-4
 DATE: 2/6/2020

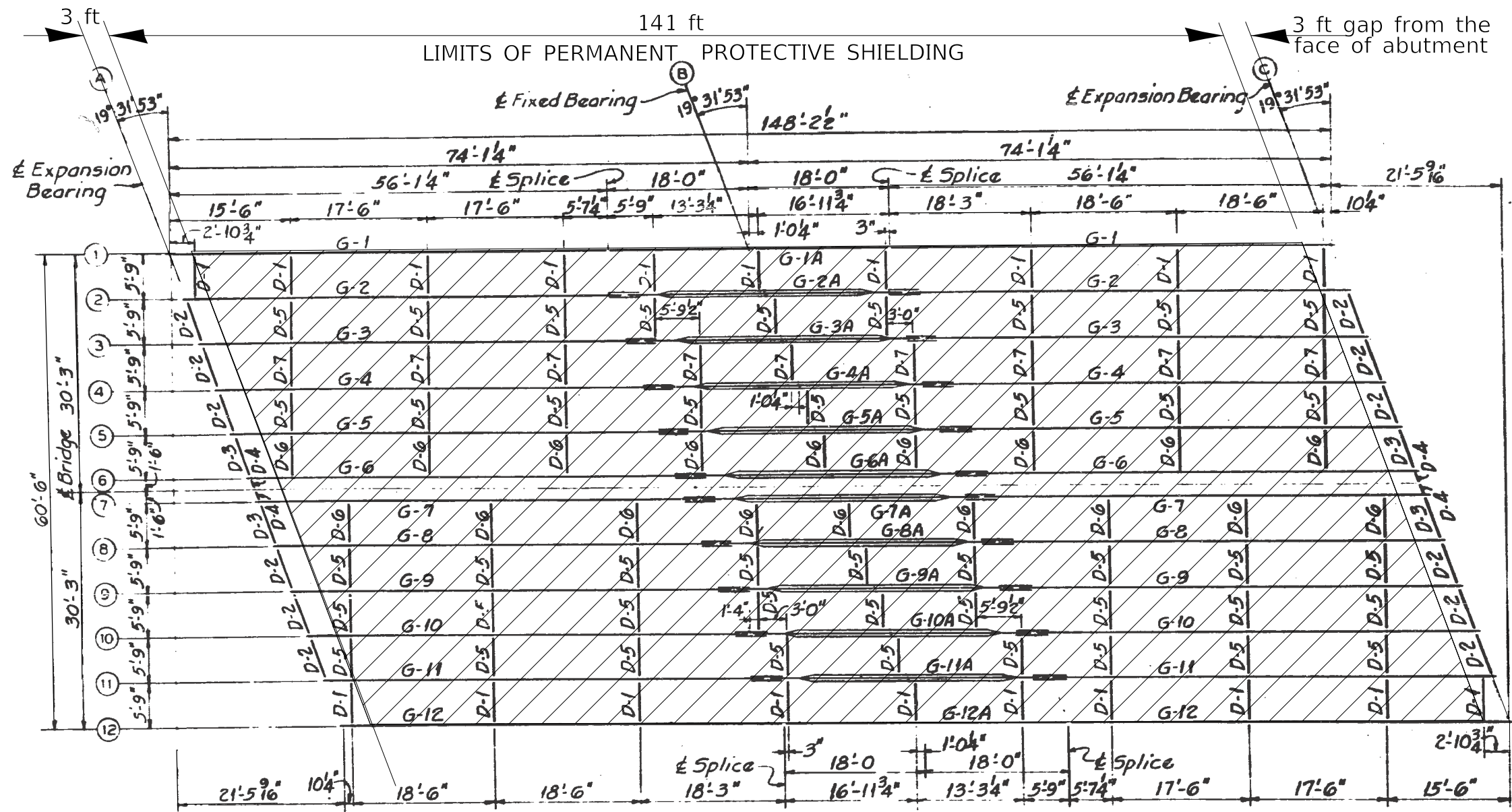
USER NAME = gorenautab	DESIGNED -	REVISED -
DRAWN -	REVISED -	
PLOT SCALE = 100,0000' / in.	CHECKED -	REVISED -
PLOT DATE = 2/6/2020	DATE -	REVISED -

STATE OF ILLINOIS
DEPARTMENT OF TRANSPORTATION

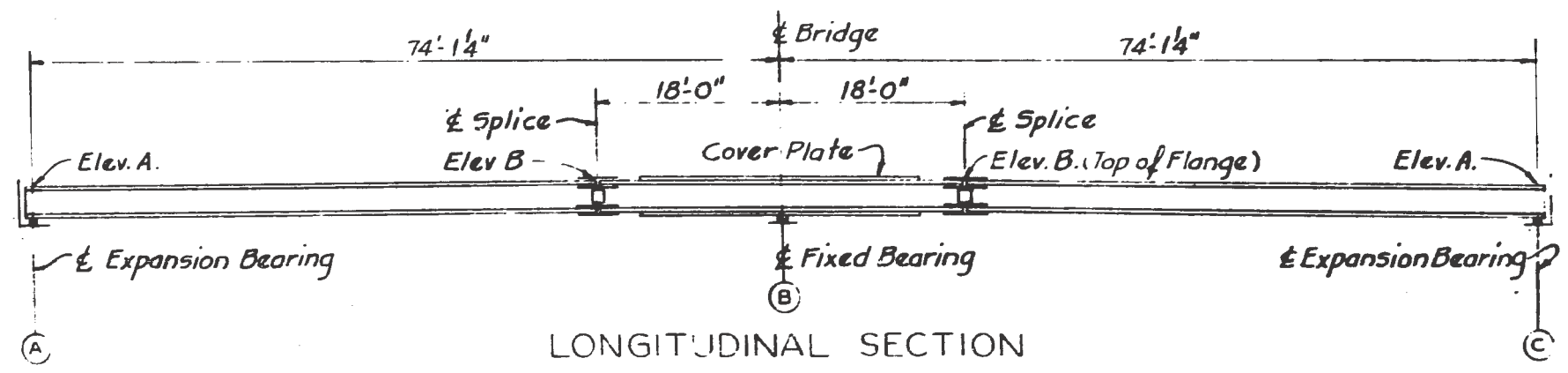
LOCATION 9
SN 016-2133 SB OVER IL 62. PLAN & CROSS SECTION.

SCALE: SHEET 1 OF 2 SHEETS STA. TO STA.

F.A. RTE.	SECTION	COUNTY	TOTAL SHEETS	SHEET NO.
*	2019-152-4	COOK	31	21
CONTRACT NO. 62K35			ILLINOIS FED. AID PROJECT	



FRAMING PLAN



LONGITUDINAL SECTION

LEGEND

 PERMANENT PROTECTIVE SHIELDING

TOTAL PROPOSED AMOUNT OF PERMANENT SHIELDING FOR SN 016-2133 IS 948 sq. yd.

* 1) F.A. P. 342
2) F.A.I. 9094

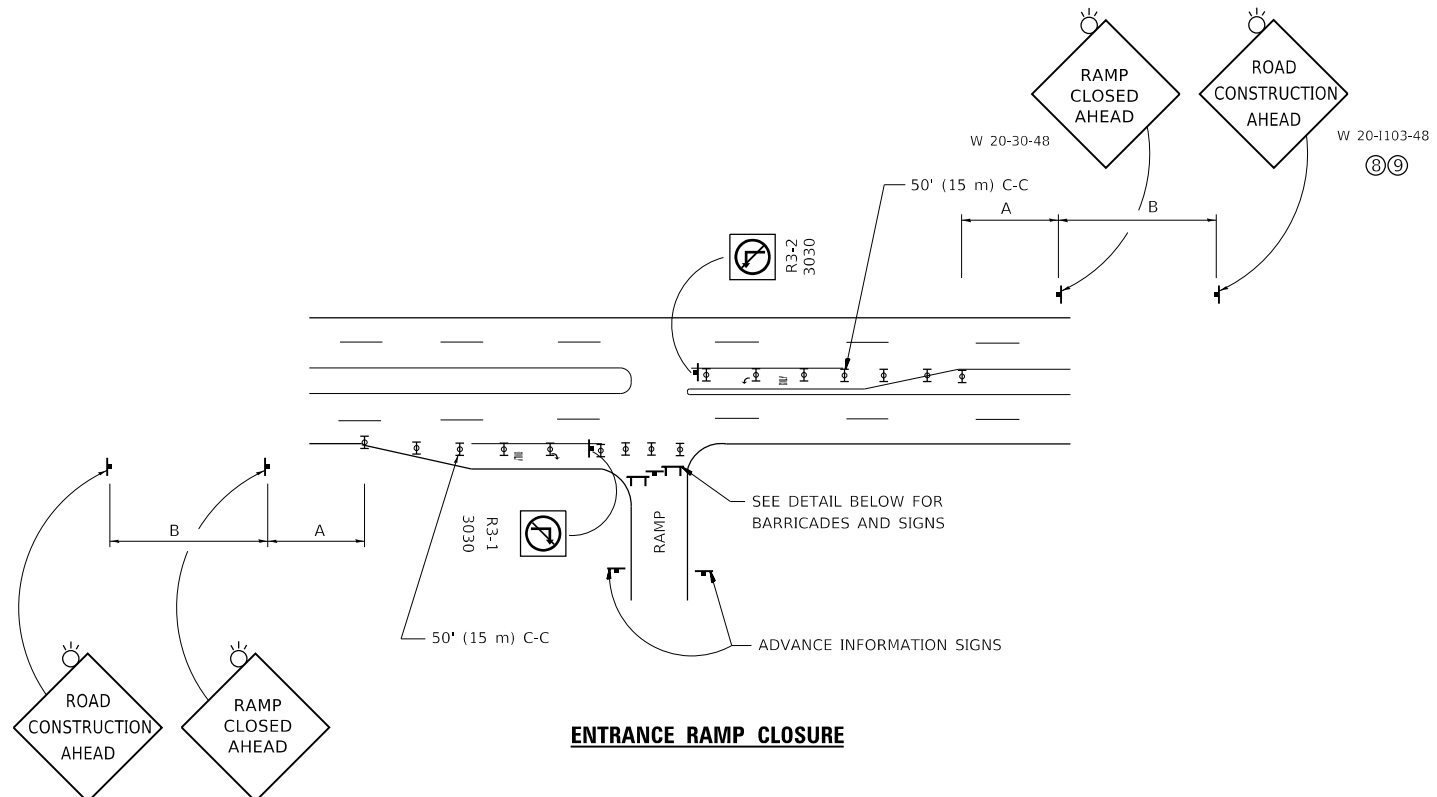
MODEL: Default
FILE: \\nas01\proj\baronm.d\at\links\gov\PI\DOT\Documents\DOT_Offices\District 1\Projects\132520\CaddData\Design\132520-Sub-eht-ubn.dgn

USER NAME = gorenautab	DESIGNED -	REVISED -
	DRAWN -	REVISED -
PLOT SCALE = 100,0000' / in.	CHECKED -	REVISED -
PLOT DATE = 2/6/2020	DATE -	REVISED -

STATE OF ILLINOIS
DEPARTMENT OF TRANSPORTATION

LOCATION 10
SN 016-2051 FULTON MARKET ST OVER I-90. FRAMING PLAN.
SCALE: SHEET 1 OF 2 SHEETS STA. TO STA.

F.A. RTE.	SECTION	COUNTY	TOTAL SHEETS	SHEET NO.
*	2019-152-I	COOK	31	23
CONTRACT NO. 62K35				
ILLINOIS FED. AID PROJECT				

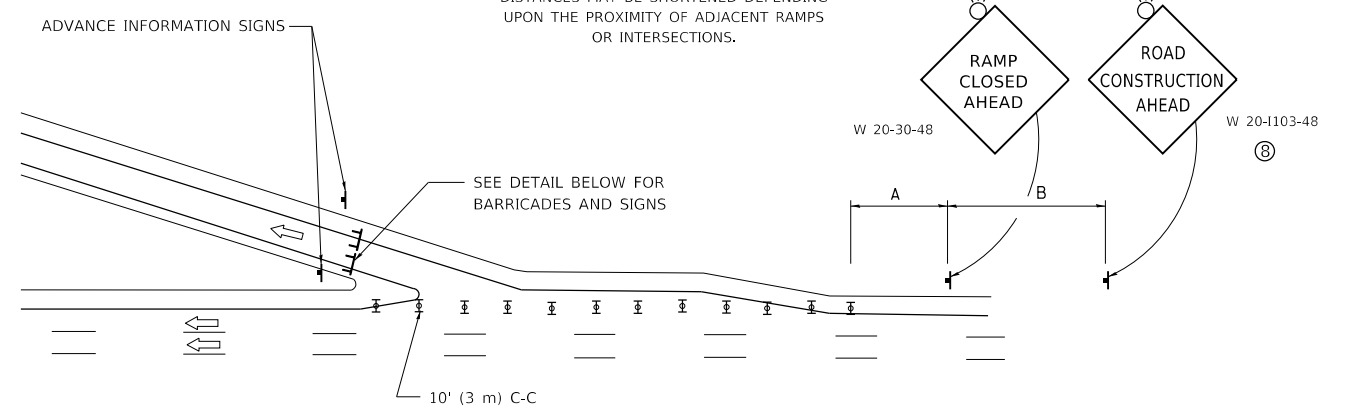


ENTRANCE RAMP CLOSURE

SIGN SPACING TABLE

FACILITY	DISTANCE BETWEEN SIGNS	
	A	B
EXPRESSWAY >24 HOURS	1000' (300 m)	1500' (450 m)
EXPRESSWAY ≤24 HOURS	500' (150 m)	500' (150 m)
ARTERIAL 55 MPH	500' (150 m)	500' (150 m)
ARTERIAL 50-45 MPH	350' (100 m)	350' (100 m)
ARTERIAL <45 MPH	200' (60 m)	200' (60 m)

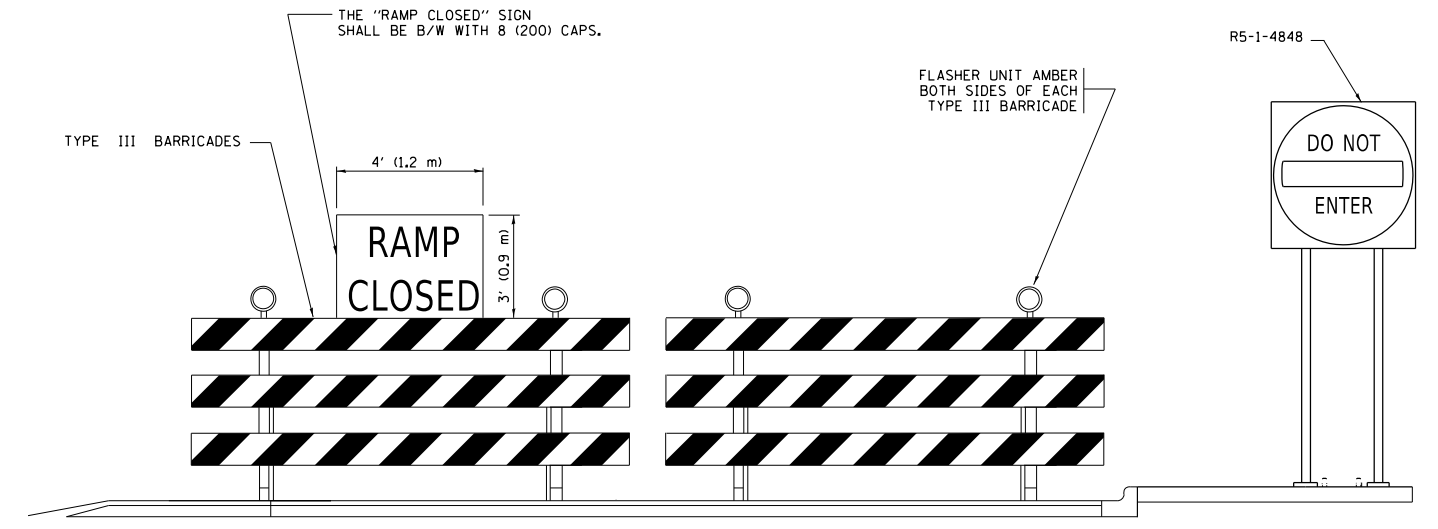
DISTANCES MAY BE SHORTENED DEPENDING UPON THE PROXIMITY OF ADJACENT RAMPS OR INTERSECTIONS.



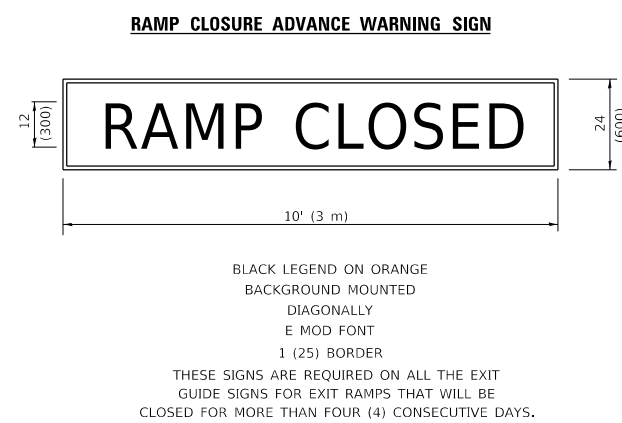
EXIT RAMP CLOSURE

SYMBOLS

- ▬ TYPE II BARRICADE OR DRUM
- ▬ TYPE III BARRICADE WITH 2 FLASHING LIGHTS

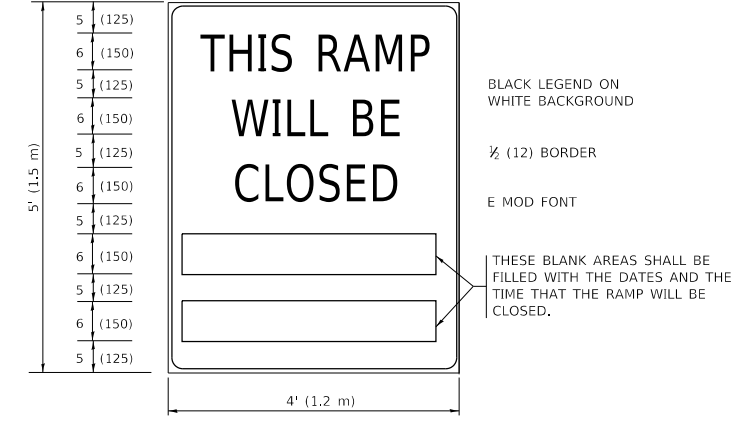


DETAIL FOR REQUIRED BARRICADES & SIGNS



RAMP CLOSURE ADVANCE WARNING SIGN

BLACK LEGEND ON ORANGE BACKGROUND MOUNTED DIAGONALLY
E MOD FONT
1 (25) BORDER
THESE SIGNS ARE REQUIRED ON ALL THE EXIT GUIDE SIGNS FOR EXIT RAMPS THAT WILL BE CLOSED FOR MORE THAN FOUR (4) CONSECUTIVE DAYS.



RAMP CLOSURE ADVANCE INFORMATION SIGN

THESE SIGNS ARE REQUIRED ON BOTH SIDES OF THE RAMP, MINIMUM OF 1 WEEK IN ADVANCE OF THE CLOSURE.
THESE SIGNS SHALL BE FABRICATED AND PAID FOR ACCORDING TO THE TEMPORARY INFORMATION SIGNING SPECIAL PROVISION

GENERAL NOTES:

- 1 CONES MAY BE SUBSTITUTED FOR DRUMS OR TYPE II BARRICADES DURING DAY OPERATIONS. CONES SHALL BE A MINIMUM OF 28 (700) HIGH.
- 2 VERTICAL BARRICADES SHALL NOT BE USED FOR RAMP CLOSURES.
- 3 A FLAGGER SHALL BE POSITIONED AT EACH CLOSED RAMP THAT IS OPEN TO CONSTRUCTION VEHICLES, PRECEDED BY A W20-7 FLAGGER WARNING SIGN.
- 4 ALL ROUTE MARKERS AND TRAILBLAZER ASSEMBLIES WHICH DIRECT MOTORISTS TO A CLOSED ENTRANCE RAMP SHALL BE COVERED WHEN THE RAMP IS CLOSED FOR MORE THAN FOUR (4) DAYS.
- 5 THE SIGNING AND BARRICADING WHICH IS REQUIRED BY THIS DETAIL SHALL BE INCLUDED IN THE COST OF TRAFFIC CONTROL AND PROTECTION (EXPRESSWAYS).
- 6 AUTHORIZATION FROM THE DISTRICT'S BUREAU OF TRAFFIC IS REQUIRED FOR ALL RAMP CLOSURES.
- 7 THE RAMP CLOSURE ADVANCE INFORMATION SIGNS SHALL BE ERECTED IF THE CLOSURE TIME EXCEEDS TWENTY-FOUR (24) HOURS. ADDITIONAL ADVANCE WARNING SIGNS ON EXIT GUIDE SIGNING WILL BE REQUIRED FOR EXIT RAMP CLOSURES THAT EXCEED FOUR (4) DAYS IN LENGTH.
- 8 ROAD CONSTRUCTION AHEAD SIGNS MAY BE OMITTED WHEN THIS DETAIL IS USED IN CONJUNCTION WITH OTHER TRAFFIC CONTROL THAT ALREADY INCLUDES A ROAD CONSTRUCTION AHEAD SIGN.
- 9 ARTERIAL ROAD CONSTRUCTION AHEAD SIGNS SHALL BE INSTALLED ON THE LEFT SIDE OF TRAFFIC IF THE MEDIAN IS MORE THAN 10 FT WIDE.

ALL DIMENSIONS ARE IN INCHES (MILLIMETERS) UNLESS OTHERWISE SHOWN.
* 1) F.A.P. 342
2) F.A.I. 90/94

PROJECT: P:\p\aut\... FILE NAME: P:\p\aut\... PROJECT: 110320\AD\Design\Drawings\...

USER NAME = gorenautab	DESIGNED - D.W.S.	REVISED - S.P.B._01-07
PLOT SCALE = 100.5459' / in.	DRAWN -	REVISED - S.P.B._12-09
PLOT DATE = 1/31/2020	CHECKED -	REVISED - M.D._06-13
	DATE - 02-83	REVISED - M.D._01-18

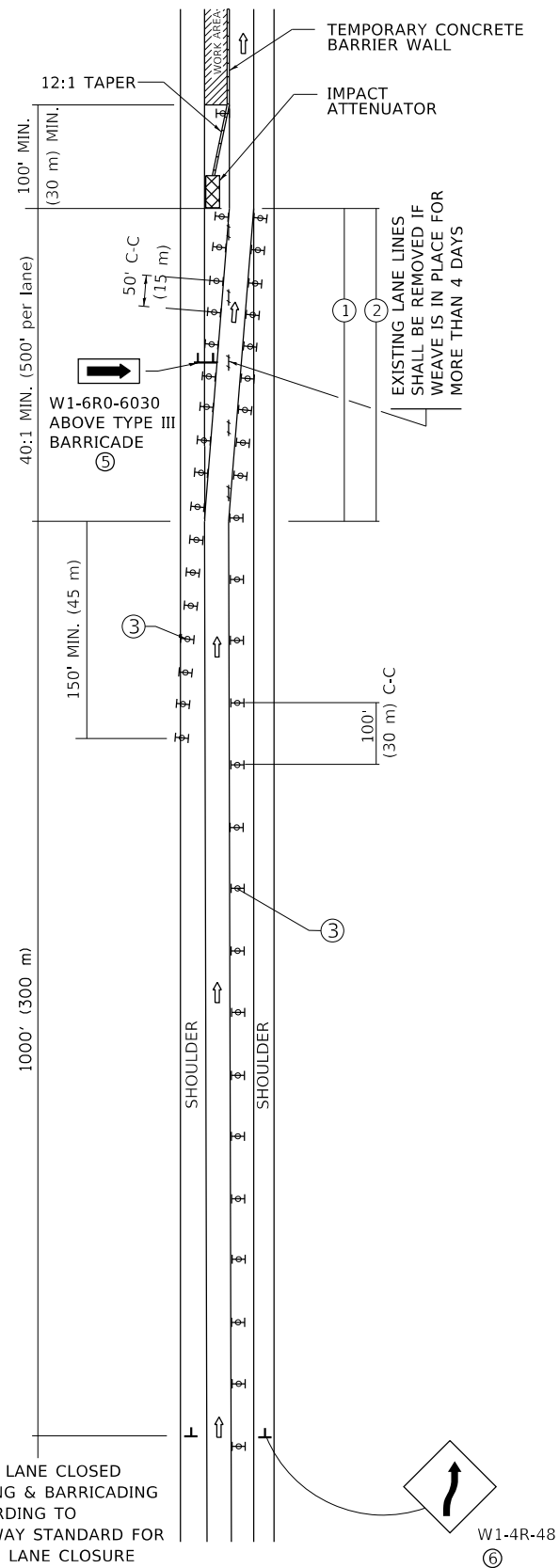
**STATE OF ILLINOIS
DEPARTMENT OF TRANSPORTATION**

**ENTRANCE AND EXIT RAMP
CLOSURE DETAILS**

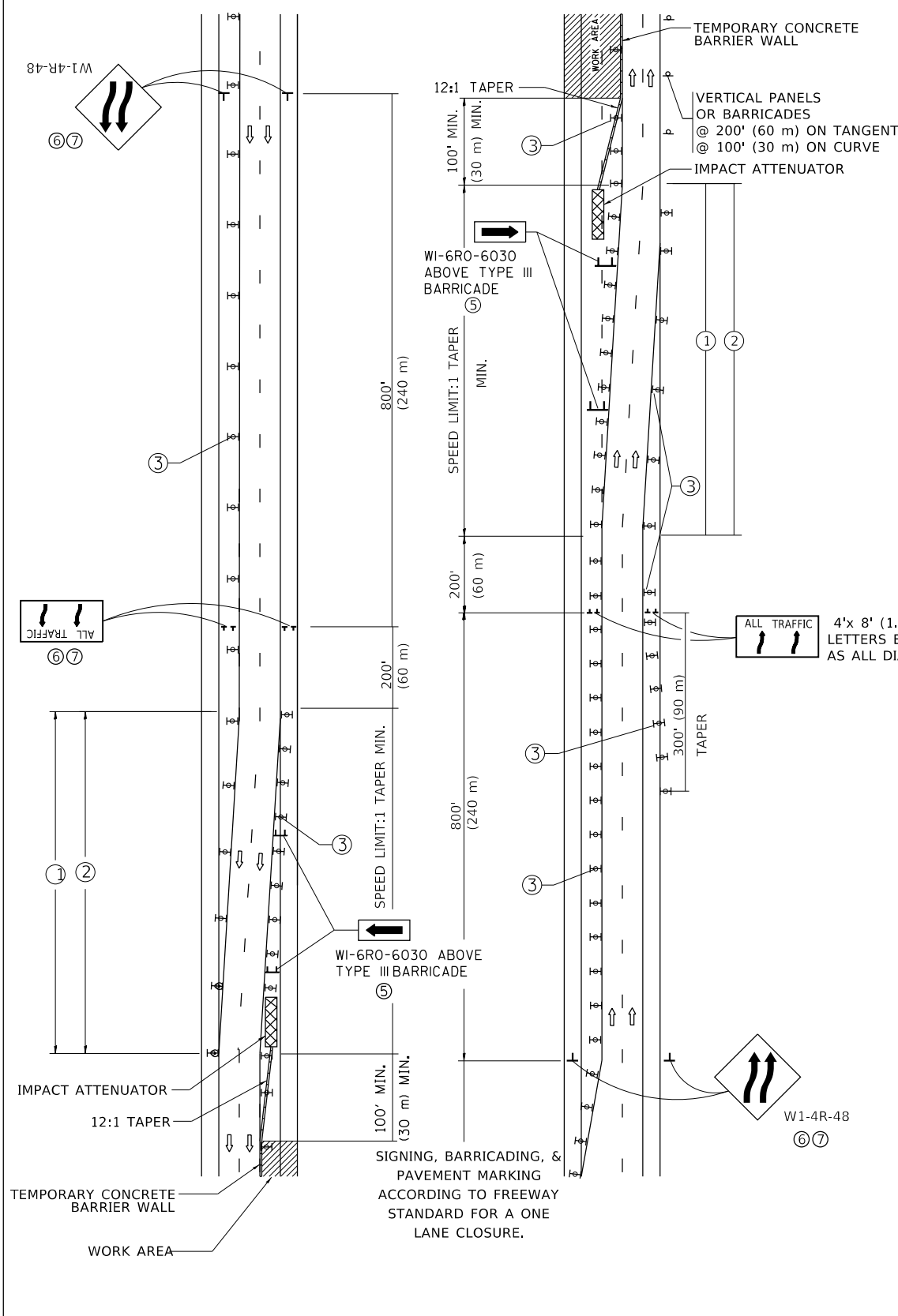
SCALE: NONE SHEET 1 OF 1 SHEETS STA. TO STA.

F.A. RTE.	SECTION	COUNTY	TOTAL SHEETS	SHEET NO.
*	2019-152-I	COOK	31	25
TC-08			CONTRACT NO. 62K35	
ILLINOIS		FED. AID PROJECT		

SINGLE LANE WEAVE

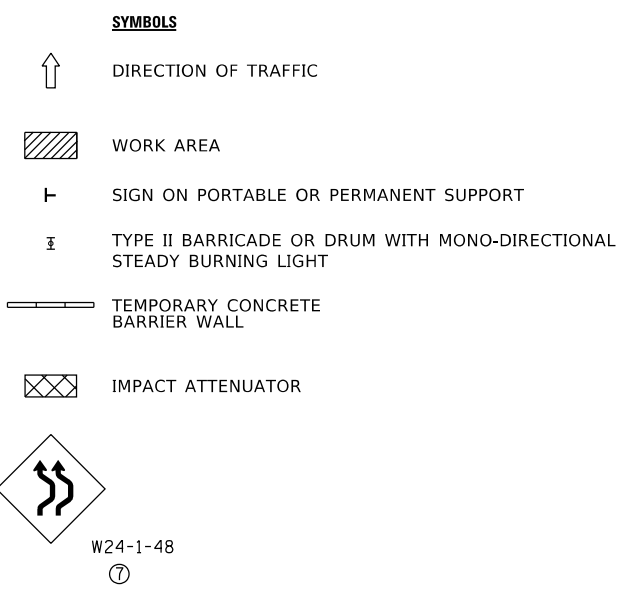


MULTI-LANE WEAVE



GENERAL NOTES:

- ① EXISTING CONFLICTING PAVEMENT MARKING LINES SHALL BE REMOVED. PAVEMENT MARKING REMOVAL SHALL NOT BE REQUIRED FOR SINGLE LANE WEAVES UNDER 4 DAYS IN DURATION.
- ② CONTINUOUS REFLECTIVE TEMPORARY PAVEMENT MARKING TAPE SHALL BE PLACED THROUGHOUT THE TAPER AND FOR 300' (90 m) ALONG SIDE THE WORK AREA WHERE THE CLOSURE TIME IS GREATER THAN FOURTEEN DAYS. THE LEFT EDGE LINE SHALL BE YELLOW AND THE RIGHT EDGE LINE SHALL BE WHITE. FOR MULTI-LANE WEAVES LANE LINES SHALL BE 5 INCH, 10'-30' (3 m-9 m) SKIP DASH, WHITE.
- ③ PLASTIC DRUMS WITH STEADY BURN LIGHTS AT 50' (15 m) C-C SPACING IN TAPERS AND 100' (30 m) C-C SPACING IN TANGENTS.
- ④ ALL SIGNS SHALL BE POST MOUNTED IF THE CLOSURE TIME EXCEEDS FOUR DAYS.
- ⑤ TYPE III BARRICADES MAY BE OMITTED FOR SINGLE-LANE WEAVES UNDER 24-HOURS IN DURATION. W1-6 SIGNS WILL STILL BE REQUIRED. IF THE WIDTH OF OFFSET IS LESS THAN 6' THEN THE TYPE III BARRICADE WITH ATTACHED ARROW SIGN PANEL CAN BE ELIMINATED IN THE TAPER AREAS.
- ⑥ WHEN THE LENGTH OF THE SHIFTED SEGMENT (DISTANCE BETWEEN WEAVE POINTS) IS LESS THAN 1500', DOUBLE REVERSE CURVE SIGNS (W24-1) SHOULD BE USED INSTEAD OF THE REVERSE CURVE (W1-4) SIGNS. ARROWS ON THE 4'X8' "ALL TRAFFIC" SIGNS SHALL BE THE SAME SHAPE.
- ⑦ THE NUMBER OF ARROWS ON THESE SIGNS SHALL MATCH THE NUMBER OF LANES OPEN TO TRAFFIC.



ALL DIMENSIONS ARE IN INCHES (MILLIMETERS) UNLESS OTHERWISE SHOWN
 * 1) F.A.P. 342
 2) F.A.I. 90/94

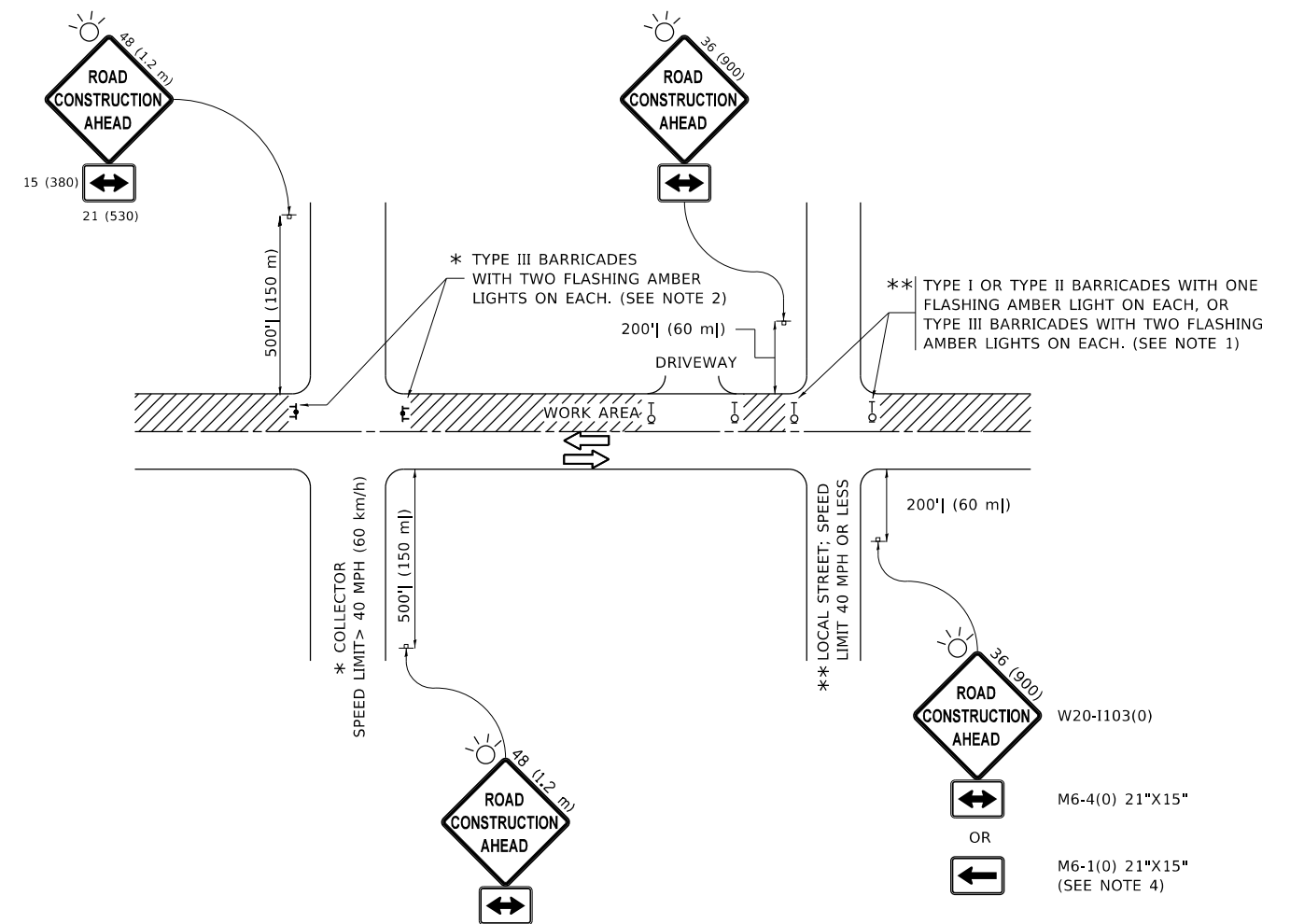
MODEL: Default
 FILE: \\nrcs.pw.com\pub\baronm.d\at\links.gov\PIWDOT\Documents\DOT_Offices\Illinetc_1\Projects\132520\CaddData\Design\DF54.dgn

USER NAME = gorenautab	DESIGNED - D.W.S.	REVISED - J.A.F. 02-06
	DRAWN -	REVISED - S.P.B. 01-07
PLOT SCALE = 100.0000' / in.	CHECKED -	REVISED - S.P.B. 12-09
PLOT DATE = 1/31/2020	DATE - 02-87	REVISED - M.D. 06-13

**STATE OF ILLINOIS
 DEPARTMENT OF TRANSPORTATION**

TRAFFIC CONTROL DETAILS FOR FREEWAY SINGLE & MULTI-LANE WEAVE			
SCALE: NONE	SHEET 1 OF 1 SHEETS	STA. TO STA.	

F.A. RTE.	SECTION	COUNTY	TOTAL SHEETS	SHEET NO.
*	2019-152-1	COOK	31	26
TC-09		CONTRACT NO. 62K35		
ILLINOIS FED. AID PROJECT				



NOTES:

1. SIDE ROAD WITH A SPEED LIMIT OF 40 MPH (60 km/h) OR LESS AS SHOWN ON THE DRAWING AND AS DIRECTED BY THE ENGINEER:
 - a) ONE "ROAD CONSTRUCTION AHEAD" SIGN 36 x 36 (900x900) WITH A FLASHER MOUNTED ON IT APPROXIMATELY 200' (60 m) IN ADVANCE OF THE MAIN ROUTE.
 - b) THE CLOSED PORTION OF THE MAIN ROUTE SHALL BE PROTECTED BY BLOCKING WITH TYPE I, TYPE II OR TYPE III BARRICADES, 1/3 OF THE CROSS SECTION OF THE CLOSED PORTION.
2. SIDE ROAD WITH A SPEED LIMIT GREATER THAN 40 MPH (60 km/h) AS SHOWN ON THE DRAWING AND AS DIRECTED BY THE ENGINEER:
 - a) ONE "ROAD CONSTRUCTION AHEAD" SIGN 48 x 48 (1.2 m x 1.2 m) WITH A FLASHER MOUNTED ON IT APPROXIMATELY 500' (150 m) IN ADVANCE OF THE MAIN ROUTE.
 - b) THE CLOSED PORTION OF THE MAIN ROUTE SHALL BE PROTECTED BY BLOCKING WITH TYPE III BARRICADES, 1/2 OF THE CROSS SECTION OF THE CLOSED PORTION.
3. CONES MAY BE SUBSTITUTED FOR BARRICADES OR DRUMS AT HALF THE SPACING DURING DAY OPERATIONS. CONES SHALL BE A MINIMUM OF 28 (710) IN HEIGHT.
4. SIGNING AND THE WORK ZONE, A SINGLE HEADED ARROW (M6-1) SHALL BE USED IN LIEU OF THE DOUBLE HEADED ARROW (M6-4).
5. WHEN WORK IS BEING PERFORMED ON A SIDE ROAD OR DRIVEWAY, FOLLOW THE APPLICABLE STANDARD(S). THE DIRECTIONAL ARROW (M6-1 OR M6-4) SHALL BE COVERED OR REMOVED WHEN NO LONGER CONSISTENT WITH THE TRAFFIC CONTROL SET-UP.
6. ADVANCE WARNING SIGNS ARE TO BE OMITTED ON DRIVEWAYS UNLESS OTHERWISE SPECIFIED IN THE PLANS OR BY THE ENGINEER.
7. THE TRAFFIC CONTROL AND PROTECTION FOR SIDE ROADS, INTERSECTIONS, AND DRIVEWAYS SHALL BE INCLUDED IN THE COST OF SPECIFIED TRAFFIC CONTROL STANDARDS OR ITEMS.

All dimensions are in inches (millimeters) unless otherwise shown.
 * 1) F.A.P. 342
 2) F.A.I. 90/94

MODEL: Default
 FILE: \\nashville-prod\pub\arooms\data\illinois.gov\PIWDOT\Documents\DOT_Offices\Director - J\Projects\1325270\CADD\Drawings\Design\DRS54.dgn

USER NAME = gorenautab	DESIGNED - L.H.A.	REVISED - A. HOUSEH 10-15-96
PLOT SCALE = 100.0000' / in.	CHECKED -	REVISED - T. RAMMACHER 01-06-00
PLOT DATE = 1/31/2020	DATE - 06-89	REVISED - A. SCHUETZE 07-01-13
		REVISED - A. SCHUETZE 09-15-16

**STATE OF ILLINOIS
DEPARTMENT OF TRANSPORTATION**

**TRAFFIC CONTROL AND PROTECTION FOR
SIDE ROADS, INTERSECTIONS, AND DRIVEWAYS**

SCALE: NONE SHEET 1 OF 1 SHEETS STA. TO STA.

F.A. RTE.	SECTION	COUNTY	TOTAL SHEETS	SHEET NO.
*	2019-152-1	COOK	31	27
TC-10			CONTRACT NO. 62K35	
ILLINOIS FED. AID PROJECT				

TURN BAY ENTRANCE AT START OF LANE CLOSURE TAPER

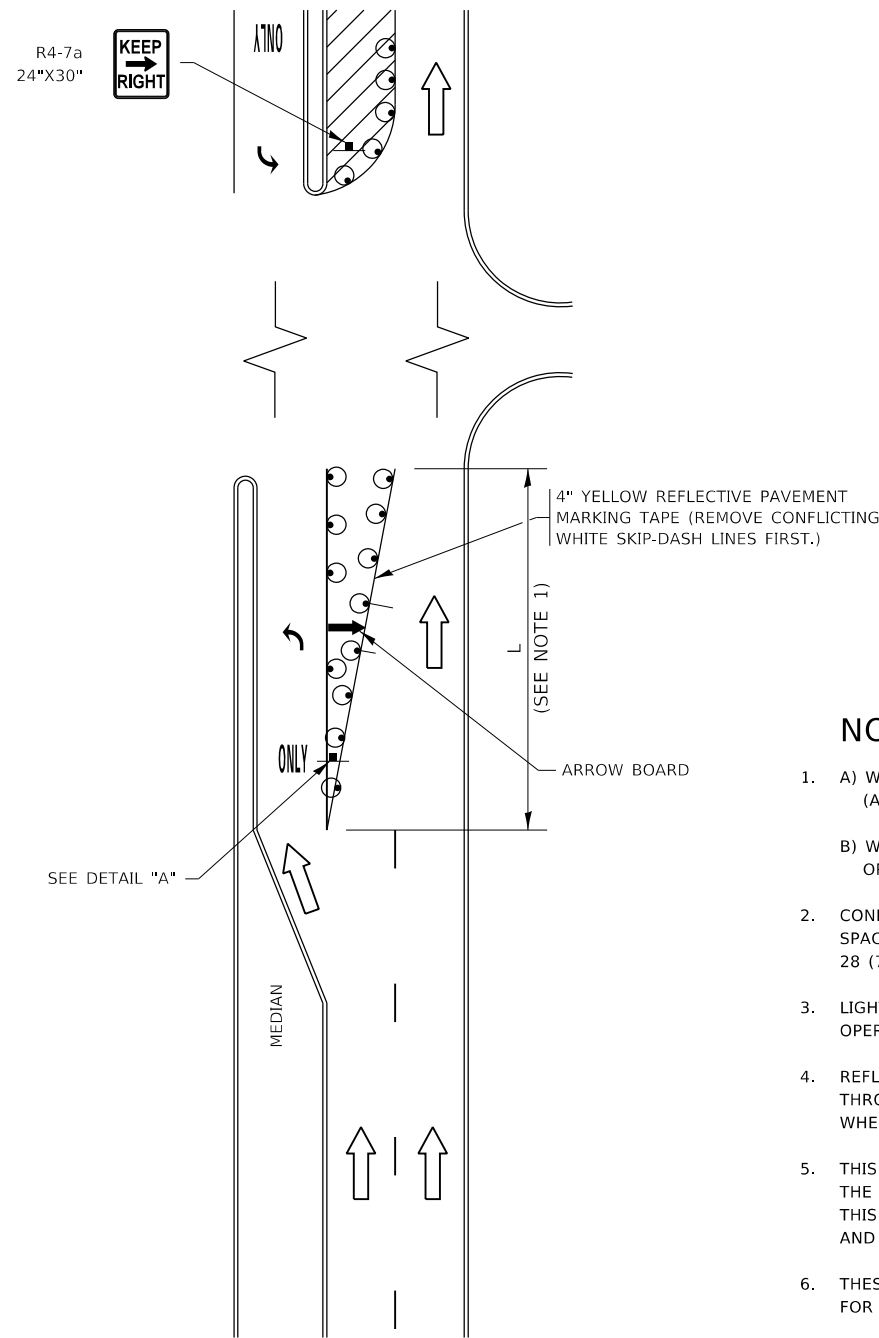


FIGURE 1

TURN BAY ENTRANCE WITHIN A LANE CLOSURE

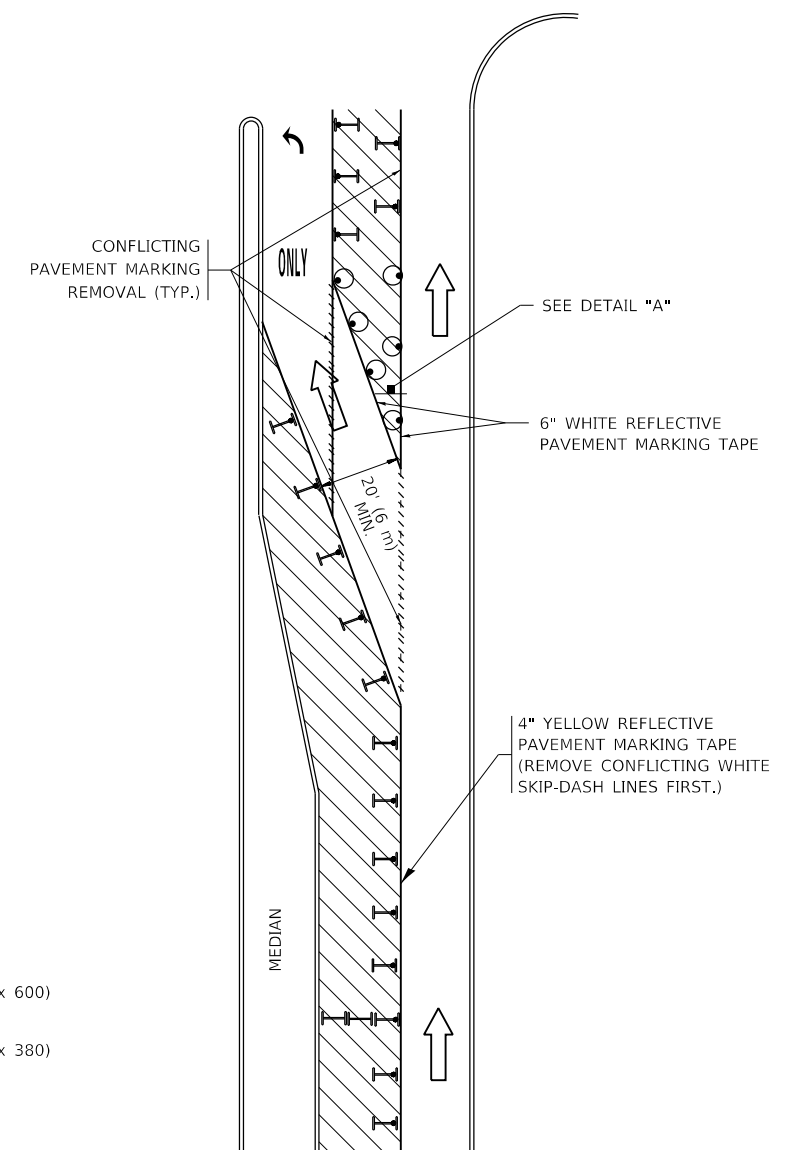
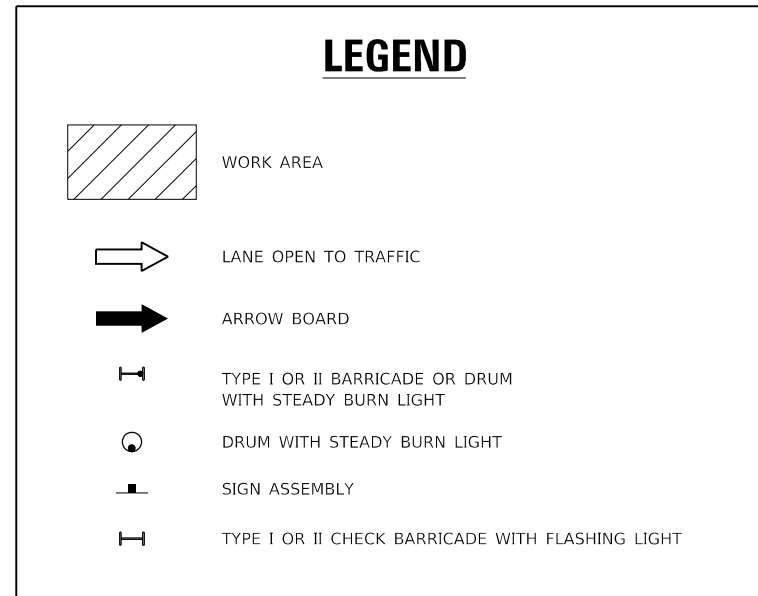
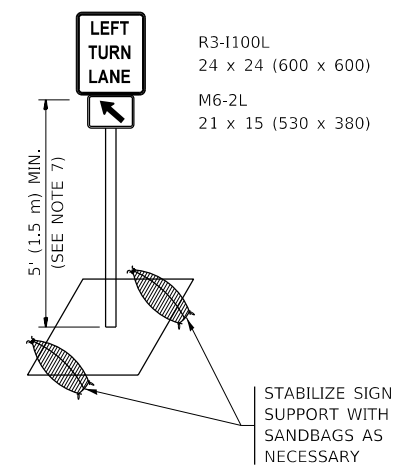


FIGURE 2



NOTES:

1. A) WHEN "L" IS \leq THE STORAGE LENGTH OF THE TURN LANE (AS SHOWN IN FIG. 1), USE FIGURE 1.
B) WHEN "L" IS $>$ THE STORAGE LENGTH OF THE TURN LANE OR THE TURN LANE IS WITHIN THE LANE CLOSURE, USE FIGURE 2.
2. CONES MAY BE SUBSTITUTED FOR BARRICADES OR DRUMS AT HALF THE SPACING DURING DAY OPERATIONS. CONES SHALL BE A MINIMUM OF 28 (710) IN HEIGHT.
3. LIGHTS WILL NOT BE REQUIRED ON BARRICADES OR DRUMS FOR DAY OPERATIONS. ALL LIGHTS SHALL BE MONODIRECTIONAL.
4. REFLECTIVE TEMPORARY PAVEMENT MARKINGS SHALL BE PLACED THROUGHOUT THE BARRICADED AREAS OF EACH TURN BAY AS SHOWN WHERE THE CLOSURE TIME IS GREATER THAN FOURTEEN (14) DAYS.
5. THIS APPLICATION ALSO APPLIES WHEN WORK IS BEING PERFORMED IN THE RIGHT LANE(S) AND THE RIGHT TURN BAY IS TO REMAIN OPEN. UNDER THIS CONDITION, "RIGHT TURN LANE" R3-1100R 24 x 24 (600 x 600) AND M6-2R 21 x 15 (530 x 380) SHALL BE USED.
6. THESE CONTROLS SHALL SUPPLEMENT MAINLINE TRAFFIC CONTROL FOR LANE CLOSURES.
7. THE SIGNS SHALL BE MOUNTED ABOVE THE BARRICADES/DRUMS ON SEPARATE SIGN SUPPORTS THAT MEET NCHRP 350 OR MASH REQUIREMENTS.
8. TRAFFIC CONTROL AND PROTECTION AT TURN BAYS (TO REMAIN OPEN TO TRAFFIC) SHALL BE INCLUDED IN THE COST OF SPECIFIED TRAFFIC CONTROL STANDARDS OR ITEMS.



DETAIL A

All dimensions are in inches (millimeters) unless otherwise shown.

* 1) F.A.P. 342
2) F.A.I. 90/94

MODEL: Default
FILE: h:\mhc\p\pub\haronom.d\at\illinois.gov\PIWDOT\Documents\DOT_Offices\Dir\etec_1\Projects\132520\CaddData\Design\DF54.dgn

USER NAME = gorenautab	DESIGNED - T. RAMMACHER 09-08-94	REVISED - R. BORO 09-14-09
	DRAWN - A. HOUSEH 11-07-95	REVISED - A. SCHUETZE 07-01-13
PLOT SCALE = 100,0000' / in.	CHECKED - A. HOUSEH 10-12-96	REVISED - A. SCHUETZE 09-15-16
PLOT DATE = 1/31/2020	DATE - T. RAMMACHER 01-06-00	REVISED -

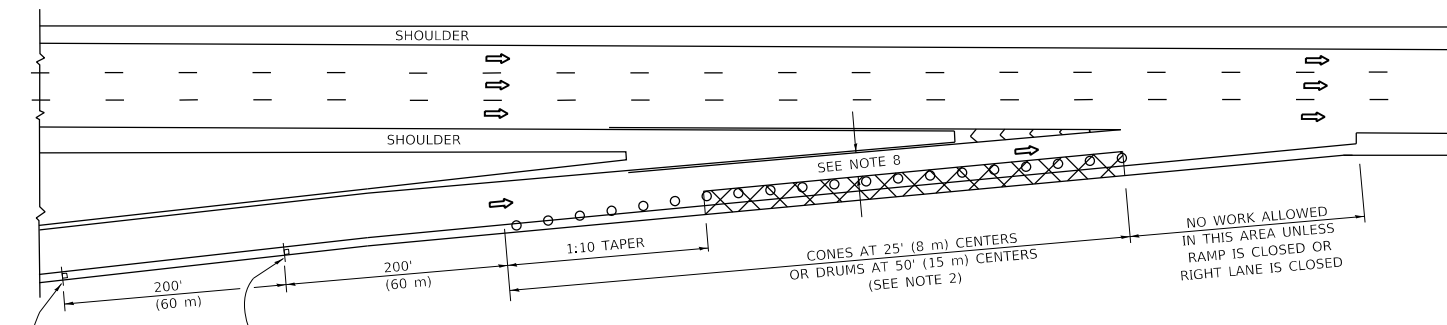
STATE OF ILLINOIS
DEPARTMENT OF TRANSPORTATION

TRAFFIC CONTROL AND PROTECTION AT TURN BAYS
(TO REMAIN OPEN TO TRAFFIC)

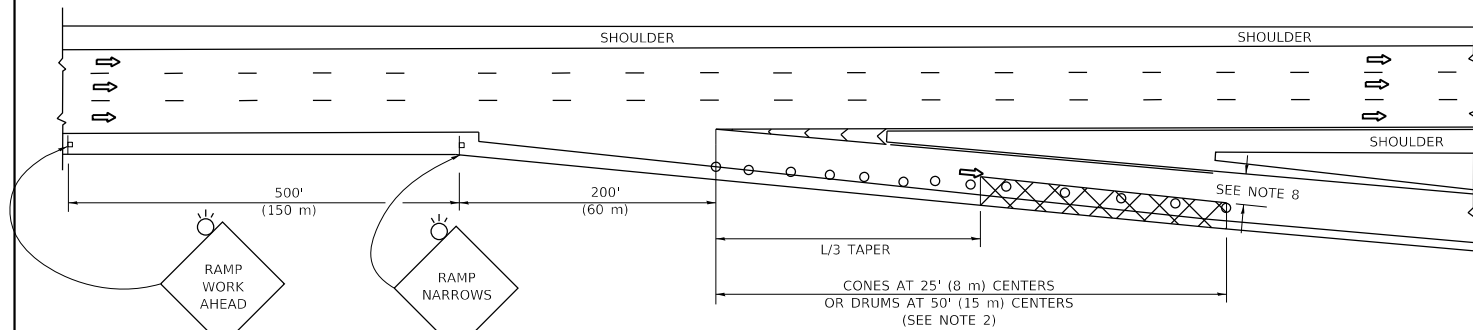
SCALE: NONE SHEET 1 OF 1 SHEETS STA. TO STA.

F.A. RTE.	SECTION	COUNTY	TOTAL SHEETS	SHEET NO.
*	2019-152-I	COOK	31	28
TC-14		CONTRACT NO. 62K35		
ILLINOIS FED. AID PROJECT				

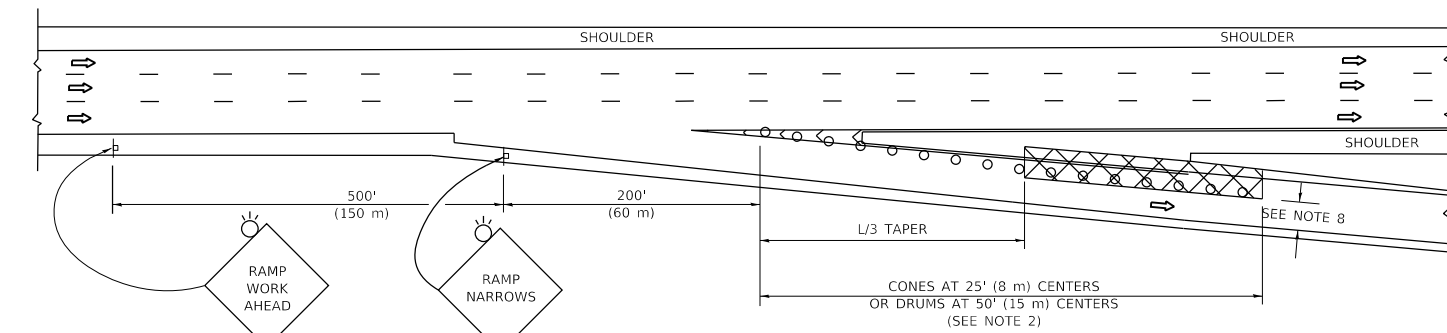
PARTIAL RAMP CLOSURE DETAILS



TYPICAL ENTRANCE RAMP



TYPICAL EXIT RAMP



TYPICAL EXIT RAMP

SYMBOLS

- ACTIVE WORK AREA
- SIGN ON PORTABLE OR PERMANENT SUPPORT
- FLAGGER WITH CONTROL SIGN
- TYPE II BARRICADE OR DRUM
- CONE, DRUM OR BARRICADE
- IMPACT ATTENUATOR OF TYPE AND TEST LEVEL SPECIFIED

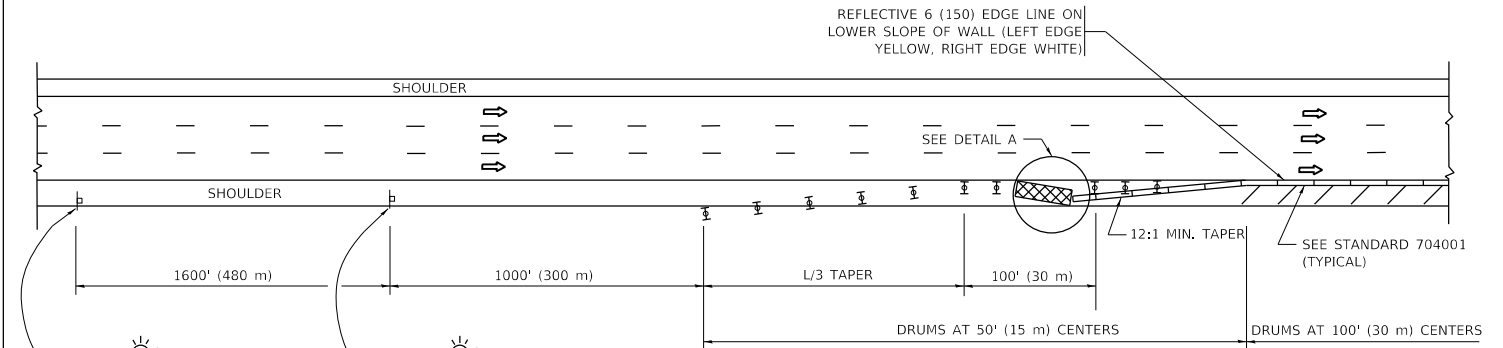
GENERAL NOTES:

- THE "L" DISTANCE EQUALS:

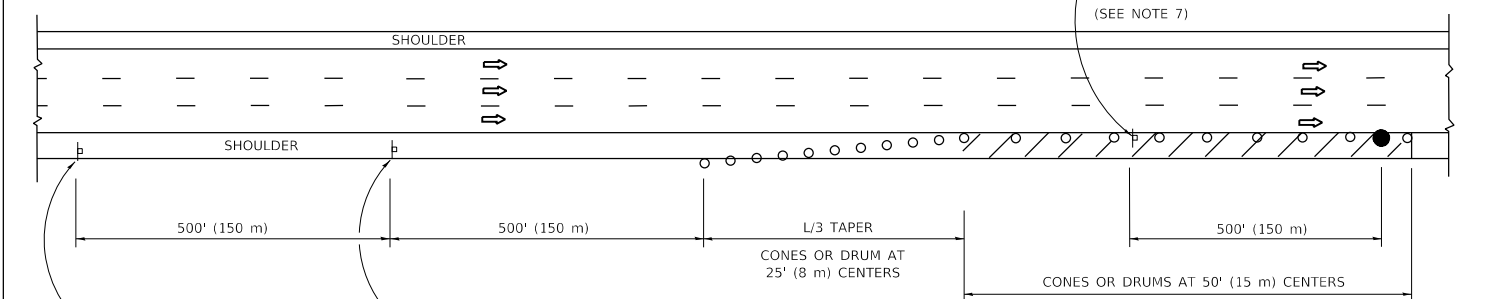
SPEED LIMIT	FORMULAS
45 mph (80 km/h) OR GREATER:	METRIC: $L=0.65(WXS)$ ENGLISH: $L=(WXS)$

W = WIDTH OF OFFSET IN FEET (METERS)
S = NORMAL POSTED SPEED MPH (KM/H)
- TYPE II BARRICADES OR DRUMS ARE REQUIRED FOR ALL NIGHTTIME CLOSURES. TYPE II BARRICADES OR DRUMS WITH MONODIRECTIONAL STEADY BURN LIGHTS ARE REQUIRED FOR DELINEATING OBSTACLES, EXCAVATIONS, OR HAZARDS EXCEEDING 100 FT (30m) IN LENGTH AT NIGHT.
- ALL SIGNS SHALL BE POST MOUNTED IF THE CLOSURE TIME EXCEEDS FOUR DAYS.
- FLASHING LIGHTS SHALL BE USED DURING THE HOURS OF DARKNESS AND SHALL BE INSTALLED ABOVE THE FIRST TWO SETS OF SIGNS.

SHOULDER CLOSURE DETAILS

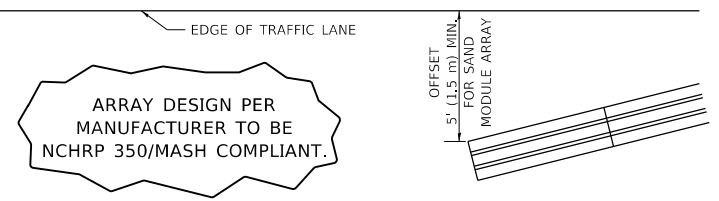


PERMANENT SHOULDER CLOSURE



DAYTIME SHOULDER CLOSURE

THIS DETAIL IS USED WHERE:
1. VEHICLES, EQUIPMENT, WORKERS OR THEIR ACTIVITIES ENCROACH IN AN AREA CLOSER THAN 15' (4.5 m) TO THE EDGE OF PAVEMENT FOR A PERIOD IN EXCESS OF 15 MINUTES.



**DETAIL "A"
IMPACT ATTENUATOR, TEMPORARY
(SEE NOTE 5)**

- THE IMPACT ATTENUATOR, TEMPORARY IS NOT REQUIRED WHEN THE TEMPORARY CONCRETE BARRIER WALL IS PROTECTED BY OR IS TIED INTO THE EXISTING GUARDRAIL. IF OFFSET IS LESS THAN 5 FEET USE NARROW USE TYPE DEVICE TO MEET NCHRP350/MASH.
- AUTHORIZATION FROM THE DISTRICT'S BUREAU OF TRAFFIC IS REQUIRED FOR ALL FREEWAY CLOSURES.
- THE FLAGGER AND FLAGGER SIGN ARE REQUIRED AT THE ABOVE WORK SITES WHEN:
 - FOUR OR MORE WORK VEHICLES ENTER THE TRAFFIC LANES IN A ONE HOUR PERIOD.
 - THE WORK AVTTIVITY REQUIRES FREQUENT ENCROACHMENT INTO THE LANE OPEN TO TRAFFIC.
 THE FLAGGER SHALL BE STATIONED APPROXIMATELY 100' (30 m) TO 200' (60 m) IN ADVANCE OF THE WORKERS.
- 12' MIN. WIDTH TANGENT SECTION
16' MIN. WIDTH CURVE SECTION.

ALL DIMENSIONS ARE IN INCHES (MILLIMETERS) UNLESS OTHERWISE SHOWN.

*1) F.A.P. 342
2) F.A.I. 90/94

MODEL: Default
FILE: \\hpc101\pub\hpc\room\dat\illinois\gov\pww\DOT\Documents\DOT_Offices\Illinet\1\Projects\4132520\Cadd\Drawings\Design\DES\48.dgn

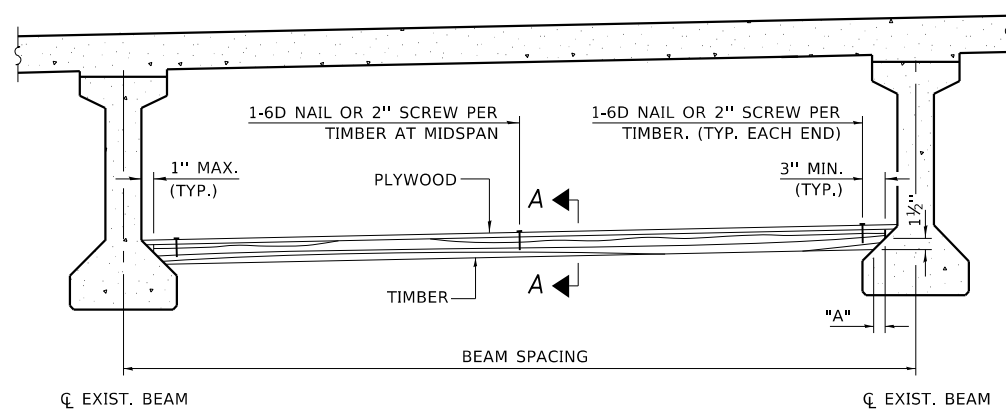
USER NAME = gorenautab	DESIGNED -	REVISED - S.P.B. 01-07
	DRAWN - D.W.S.	REVISED - S.P.B. 12-09
PLOT SCALE = 100.0000' / in.	CHECKED -	REVISED - M.D. 06-13
PLOT DATE = 1/31/2020	DATE - 11-96	REVISED - M.D. 01-18

**STATE OF ILLINOIS
DEPARTMENT OF TRANSPORTATION**

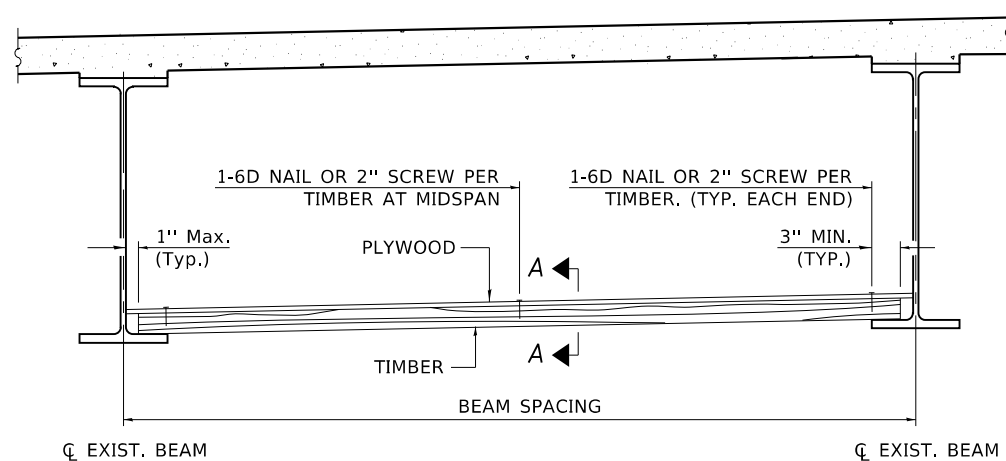
TRAFFIC CONTROL DETAILS FOR FREEWAY SHOULDER CLOSURES AND PARTIAL RAMP CLOSURES			
SCALE: NONE	SHEET 1	OF 1 SHEETS	STA. TO STA.

F.A. RTE.	SECTION	COUNTY	TOTAL SHEETS	SHEET NO.
*	2019-152-I	COOK	31	29
TC-17			CONTRACT NO. 62K35	
ILLINOIS FED. AID PROJECT				

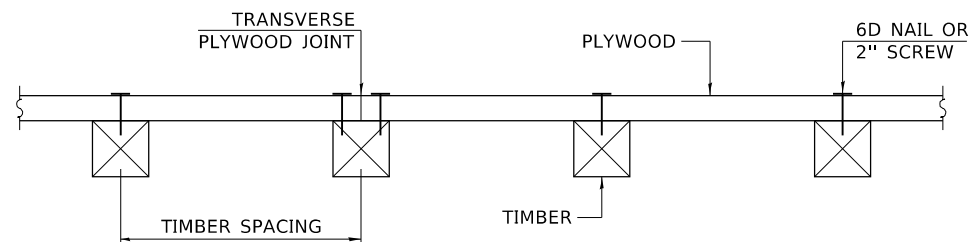
STATE OF ILLINOIS DEPARTMENT OF TRANSPORTATION



PPC I-BEAMS AND BULB-T'S



STEEL BEAMS



SECTION A-A

TIMBER SPACING

BEAM SPACING (FT.)	TIMBER SIZES (IN.)		
	4" X 4" WITH MIN. FB=775 PSI FV=135 PSI	4" X 6" WITH MIN. FB=775 PSI FV=135 PSI	6" X 6" WITH MIN. FB=575 PSI FV=125 PSI
	MAXIMUM TIMBER SPACING (IN.)		
4.5	16	16	16
4.75	16	16	16
5.0	16	16	16
5.25	16	16	16
5.5	16	16	16
5.75	16	16	16
6.0	16	16	16
6.25	12	16	16
6.5	12	16	16
6.75	12	16	16
7.0	8	16	16
7.25	8	16	16
7.5	8	16	16
7.75	8	16	16
8.0	8	12	16
8.25	8	12	16
8.5	6	12	12
8.75	6	12	12
9.0	6	8	12

PPC I-BEAMS AND BULB-T'S

BEAM	"A"
36" I-Beam	1 1/2"
42" I-Beam	1 1/2"
48" I-Beam	1 1/2"
54" I-Beam	1 5/8"
63" Bulb-T	3 3/8"
72" Bulb-T	3 3/8"

NOTES:

1. SEE SPECIAL PROVISION FOR PERMANENT PROTECTIVE SHIELD SYSTEM.
2. TIMBER SIZES SHOWN ARE NOMINAL SIZES. ROUGH SAWN TIMBER OF THE DIMENSIONS SHOWN WILL ALSO BE CONSIDERED ACCEPTABLE.
3. THE MINIMUM FB AND FV VALUES SHOWN ARE THE TABULATED DESIGN VALUES GIVEN IN THE NATIONAL DESIGN SPECIFICATION FOR WOOD CONSTRUCTION FOR NO. 2 SPRUCE-PINE-FIR WITHOUT ADJUSTMENT FACTORS APPLIED. BETTER GRADES OR OTHER SPECIES WITH EQUAL OR HIGHER ALLOWABLE STRESSES WILL ALSO BE CONSIDERED ACCEPTABLE.
4. THE TIMBER SPACINGS SHOWN HAVE BEEN DETERMINED USING ALLOWABLE STRESSES WITH ALL ADJUSTMENT FACTORS NECESSARY FOR THE ANTICIPATED SERVICE CONDITIONS. ALL TIMBER SHALL BE TREATED.
5. PLYWOOD SHALL BE 5/8" RATED EXTERIOR TYPE PLYWOOD BY APA. PLYWOOD SHALL BE PLACED SUCH THAT THE FACE GRAIN IS PERPENDICULAR TO THE TIMBER SUPPORTS. WHEN LESS THAN A FULL SHEET (4' WIDTH) OF PLYWOOD IS USED, THE WIDTH OF THE STRIP USED SHALL NOT BE LESS THAN 2'.
6. TRANSVERSE PLYWOOD JOINTS SHALL BE SUPPORTED BY TIMBERS.
7. WHEN 4" X 6" TIMBERS ARE USED, THEY SHALL BE PLACED SUCH THAT THE WIDE FACE IS HORIZONTAL AND THE NARROW FACE IS VERTICAL.
8. DESIGN LOAD = 200 PSF.

BILL OF MATERIAL

ITEM	UNIT	TOTAL
PROTECTIVE SHIELD (PERMANENT)	SQ. YD.	10457

PERMANENT PROTECTIVE SHIELD

* 1) F.A.P. 342
2) F.A.I. 90/94

PPS-1 01-22-09

USER NAME = gorenautab	DESIGNED -	REVISED -
	DRAWN -	REVISED -
PLOT SCALE = 100.0000' / in.	CHECKED -	REVISED -
PLOT DATE = 1/31/2020	DATE -	REVISED -

**STATE OF ILLINOIS
DEPARTMENT OF TRANSPORTATION**

PERMANENT PROTECTIVE SHIELD

SCALE: NONE SHEET 1 OF 1 SHEETS STA. TO STA.

F.A. RTE.	SECTION	COUNTY	TOTAL SHEETS	SHEET NO.
*	2019-152-I	COOK	31	31
BM-PPS-1			CONTRACT NO. 62K35	
ILLINOIS FED. AID PROJECT				

MODEL: Default
FILE: N:\msc\proj\ppshroom.dwg
PROJECT: 132570\Cadd\Drawings\Design\Design\PPS-1.dwg