

**INDEX OF SHEETS**

- 1. COVER SHEET
- 2. GENERAL NOTES
- 3 - 4. SUMMARY OF QUANTITIES
- 5 - 7. TYPICAL SECTIONS
- 8 - 10. SCHEDULES
- 11. LOCATION MAP
- 12 - 13. CLASS A PATCHING DETAILS
- 14 - 15. CLASS B PATCHING DETAILS
- 16. TEMPORARY INFORMATION SIGNING

**STANDARDS**

- 000001-07 STANDARD SYMBOLS, ABBREVIATIONS AND PATTERNS
- 001001-02 AREAS OF REINFORCEMENT BARS
- 001006 DECIMAL OF AN INCH AND OF A FOOT
- 701001-02 OFF-ROAD OPERATIONS 2L, 2W, MORE THAN 15' (4.5 m) AWAY
- 701006-05 OFF-ROAD OPERATIONS 2L, 2W, 15' (4.5 m) TO 24" (600 mm) FROM PAVEMENT EDGE
- 701101-05 OFF-ROAD OPERATIONS, MULTILANE, 15' (4.5 m) TO 24" (600 mm) FROM PAVEMENT EDGE
- 701106-02 OFF-ROAD OPERATIONS, MULTILANE, MORE THAN 15' (4.5 m) AWAY
- 701201-05 LANE CLOSURE, 2L, 2W, DAY ONLY, FOR SPEEDS  $\geq 45$  MPH
- 701400-09 APPROACH TO LANE CLOSURE, FREEWAY/EXPRESSWAY
- 701406-12 LANE CLOSURE, FREEWAY/EXPRESSWAY, DAY OPERATIONS ONLY
- 701411-09 LANE CLOSURE, MULTILANE, AT ENTRANCE OR EXIT RAMP FOR SPEEDS  $\geq 45$  MPH
- 701428-01 TRAFFIC CONTROL, SETUP AND REMOVAL, FREEWAY/EXPRESSWAY
- 701456-05 PARTIAL EXIT RAMP CLOSURE FREEWAY/EXPRESSWAY
- 701901-08 TRAFFIC CONTROL DEVICES

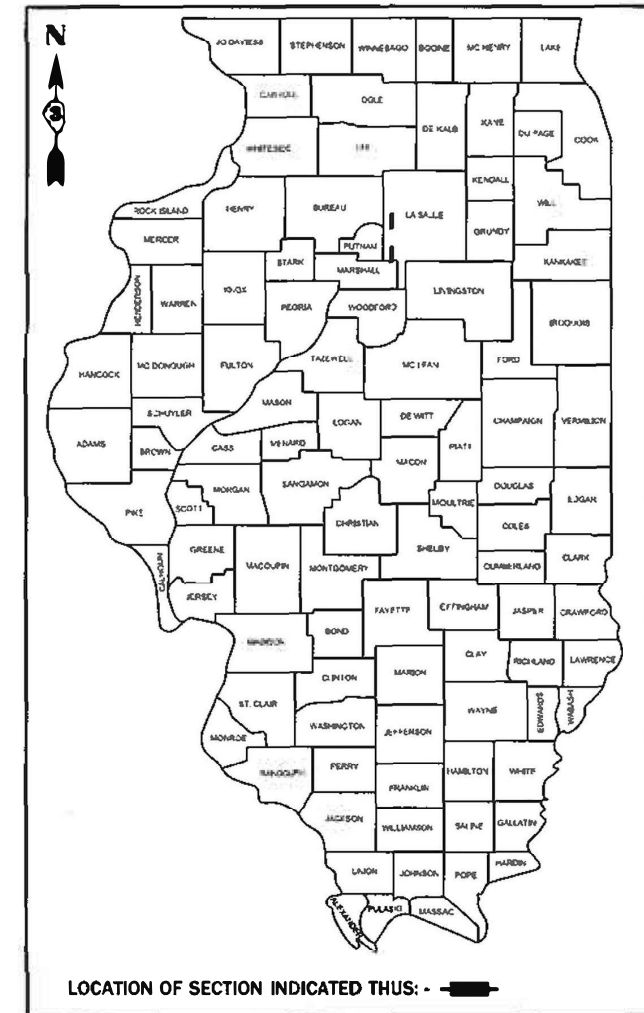
**STATE OF ILLINOIS**  
**DEPARTMENT OF TRANSPORTATION**  
**PROPOSED**  
**HIGHWAY PLANS**

**F.A.I. ROUTE 39 (I-39)**  
**SECTION (50-1,3)K & PP**  
**PAVEMENT PATCHING**  
**IL 71 AND IL 18 MAINLINE**  
**AND I-39 INTERCHANGE RAMP**  
**LASALLE COUNTY**

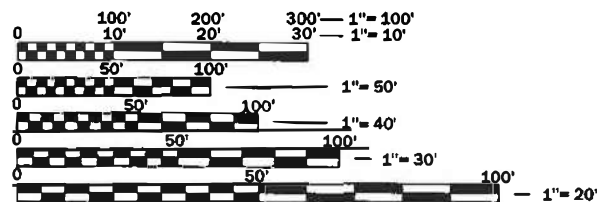
C-93-078-18

F.A.I. RTE.	SECTION	COUNTY	TOTAL SHEETS	SHEET NO.
39	(50-1,3)K & PP	LASALLE	16	1
ILLINOIS			CONTRACT NO. 66J34	

D-93-074-18



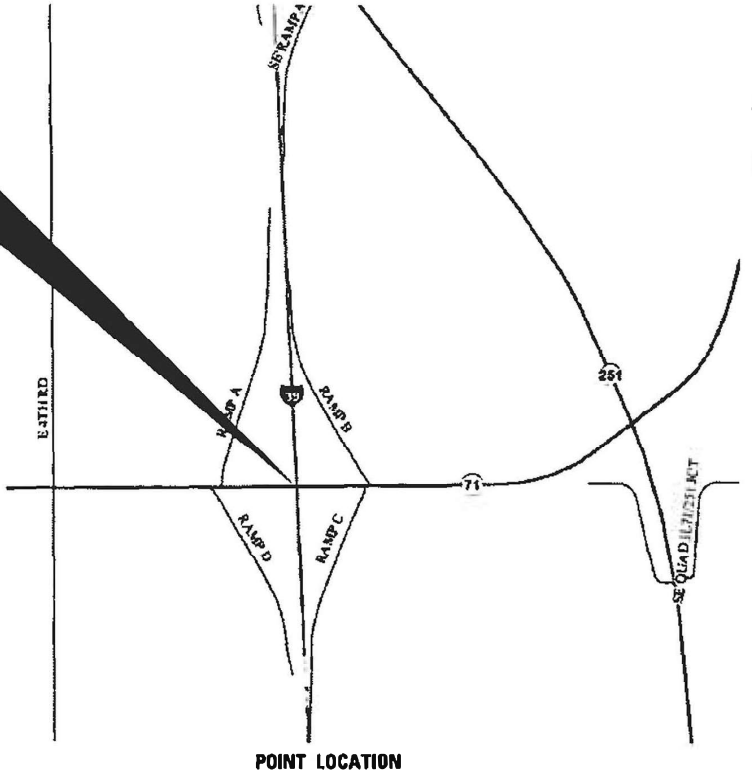
**LOCATION NO. 1**  
**I-39 AND IL 71**  
**INTERCHANGE**



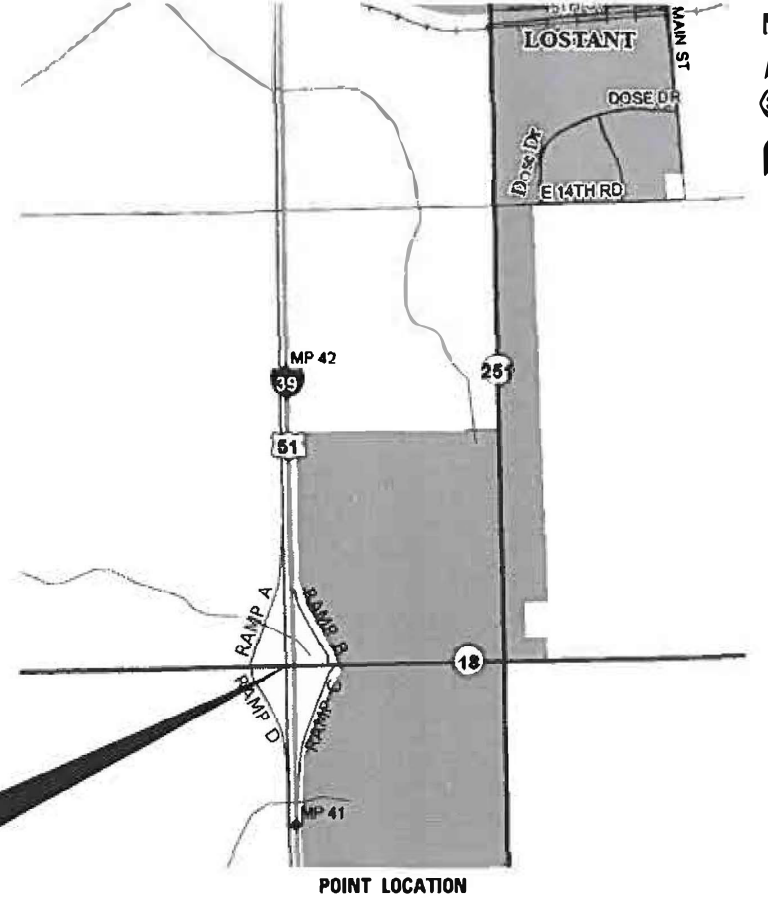
FULL SIZE PLANS HAVE BEEN PREPARED USING STANDARD ENGINEERING SCALES. REDUCED SIZED PLANS WILL NOT CONFORM TO STANDARD SCALES. IN MAKING MEASUREMENTS ON REDUCED PLANS, THE ABOVE SCALES MAY BE USED.

J.U.L.I.E.  
 JOINT UTILITY LOCATION INFORMATION FOR EXCAVATION  
 1-800-892-0123  
 OR 811

**PROJECT ENGINEER: JOE KANNEL P.E.**  
**UNIT CHIEF: RON WOODSHANK**  
**DISTRICT 3 NO. (815) 434-6131**  
**CONTRACT NO. 66J34**



**LOCATION NO. 2**  
**I-39 AND IL 18**  
**INTERCHANGE**



**FUNCTIONAL CLASSIFICATION**  
 RURAL - IL 71 & I-39 INTERCHANGE

ILI	RAMP A	RAMP B	RAMP C	RAMP D
2017 ADT - 2,400	2018 ADT - 700	2016 ADT - 800	2018 ADT - 325	2016 ADT - 175
P.V. 64.2%	P.V. 67.1%	P.V. 71.9%	P.V. 68.2%	P.V. 71.5%
S.U. 12.9%	S.U. 4.3%	S.U. 6.2%	S.U. 9.2%	S.U. 11.4%
M.U. 22.9%	M.U. 28.6%	M.U. 21.9%	M.U. 24.8%	M.U. 17.1%

**FUNCTIONAL CLASSIFICATION**  
 RURAL - IL 18 & I-39 INTERCHANGE

ILI	RAMP A	RAMP B	RAMP C	RAMP D
2017 ADT - 3,300	2016 ADT - 2000	2016 ADT - 1850	2016 ADT - 375	2016 ADT - 400
P.V. 83.8%	P.V. 89.0%	P.V. 90.8%	P.V. 81.4%	P.V. 82.5%
S.U. 4.8%	S.U. 3.5%	S.U. 3.8%	S.U. 5.3%	S.U. 5.0%

**STATE OF ILLINOIS**  
**DEPARTMENT OF TRANSPORTATION**

SUBMITTED March 7, 2020

*[Signature]*  
 REGIONAL ENGINEER

May 8, 2020

*[Signature]*  
 ENGINEER OF DESIGN AND ENVIRONMENT

May 8, 2020

*[Signature]*  
 DIRECTOR OF HIGHWAYS PROJECT IMPLEMENTATION

**PRINTED BY THE AUTHORITY**  
**OF THE STATE OF ILLINOIS**

**GENERAL NOTES**

PLAN DIMENSIONS AND DETAILS RELATIVE TO EXISTING PLANS ARE SUBJECT TO NOMINAL CONSTRUCTION VARIATIONS. THE CONTRACTOR SHALL FIELD VERIFY EXISTING DIMENSIONS AND DETAILS AFFECTING NEW CONSTRUCTION AND MAKE NECESSARY APPROVED ADJUSTMENTS PRIOR TO CONSTRUCTION OR ORDERING OF MATERIALS. SUCH VARIATIONS SHALL NOT BE CAUSE FOR ADDITIONAL COMPENSATION FOR A CHANGE IN SCOPE OF WORK; HOWEVER, THE CONTRACTOR WILL BE PAID FOR THE QUANTITY ACTUALLY FURNISHED AT THE UNIT PRICE BID FOR THE WORK.

FOR STABILIZATION, ALL TYPE III BARRICADES WILL REQUIRE A MINIMUM OF FOUR SAND BAGS PER BARRICADE.

ALL EXCAVATED MATERIAL, WHICH INCLUDES DIGGING OR GRADING OF ANY SOIL OR FILL MATERIAL, WITH THE EXCEPTION OF AGGREGATE FILLS, MUST BE INCORPORATED WITHIN THE IDOT RIGHT OF WAY DUE TO ENVIRONMENTAL DOCUMENTATION REQUIREMENTS.

ANY REFERENCE TO A STANDARD IN THESE PLANS SHALL BE INTERPRETED TO MEAN THE EDITION AS INDICATED BY THE SUBNUMBER SHOWN IN THE LIST OF STANDARDS OR THE COPY INCLUDED IN THESE PLANS.

THE CONTRACTOR SHALL CONTACT JULIE AT LEAST 48 HOURS PRIOR TO EXCAVATION TO DETERMINE WHICH UTILITIES ARE IN THE AREA.

**COMMITMENTS**

STATE OF ILLINOIS  
DEPARTMENT OF TRANSPORTATION  
DISTRICT THREE  
AS BUILT INFORMATION

\_\_\_\_\_  
SUPERVISING CONSTRUCTION FIELD ENGINEER

\_\_\_\_\_  
RESIDENT ENGINEER / TECHNICIAN

START & END DATES  
OF CONSTRUCTION:

\_\_\_\_\_

INSPECTORS:

\_\_\_\_\_

\_\_\_\_\_

\_\_\_\_\_

STATE OF ILLINOIS  
DEPARTMENT OF TRANSPORTATION  
DISTRICT THREE

PREPARED BY: *Don Brumil*  
DISTRICT STUDIES & PLANS ENGINEER

DATE: March 17, 2020

EXAMINED BY: *[Signature]*  
DISTRICT CONSTRUCTION ENGINEER

*[Signature]*  
DISTRICT MATERIALS ENGINEER

*[Signature]*  
DISTRICT OPERATIONS ENGINEER

FILE NAME *	USER NAME = MARINEJ	DESIGNED - RW	REVISED -
pw:\planroom\dot\illinois.gov\PV\DOT\Documents\DOT	Office\District 3\Projects\0366\34\CAD\asb\66J34-details.dgn	DRAWN - RW	REVISED -
Default	PLOT SCALE = 3.9370 / mm	CHECKED - EP	REVISED -
	PLOT DATE = 2/5/2020	DATE - 08/17/2018	REVISED -

STATE OF ILLINOIS  
DEPARTMENT OF TRANSPORTATION

**GENERAL NOTES**

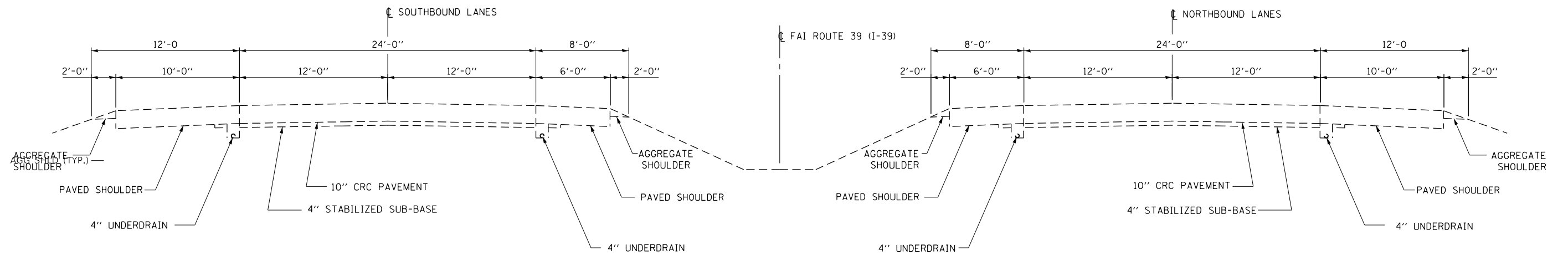
SCALE: SHEET 1 OF 1 SHEETS STA. TO STA.

F.A.I. RTE.	SECTION	COUNTY	TOTAL SHEETS	SHEET NO.
39	(50-1.3)K & PP	LASALLE	16	2
CONTRACT NO. 66J34				
ILLINOIS   FED. AID PROJECT				

CODE NO.	ITEM	UNIT	TOTAL QUANTITY	CONSTRUCTION CODE	
				CONTRACT MAINTENANCE	
				100% STATE	
				ROADWAY	
				0006	
				RURAL	
44200050	WELDED WIRE REINFORCEMENT	SQ YD	255		255
44200559	CLASS A PATCHES, TYPE IV, 10 INCH	SQ YD	170		170
44200970	CLASS B PATCHES, TYPE II, 10 INCH	SQ YD	1249		1249
44200974	CLASS B PATCHES, TYPE III, 10 INCH	SQ YD	22		22
44200976	CLASS B PATCHES, TYPE IV, 10 INCH	SQ YD	233		233
44201299	DOWEL BARS 1 1/2"	EACH	3386		3386
44213000	PATCHING REINFORCEMENT	SQ YD	170		170
44213200	SAW CUTS	FOOT	7847		7847
44213204	TIE BARS 3/4"	EACH	196		196
67100100	MOBILIZATION	L SUM	1		1
70100420	TRAFFIC CONTROL AND PROTECTION, STANDARD 701411	EACH	1		1
70100700	TRAFFIC CONTROL AND PROTECTION, STANDARD 701406	L SUM	1		1
70100825	TRAFFIC CONTROL AND PROTECTION, STANDARD 701456	L SUM	1		1
X7010520	TRAFFIC CONTROL AND PROTECTION, STANDARD 701201 (SPECIAL)	L SUM	1		1

CODE NO.	ITEM	UNIT	TOTAL QUANTITY	CONSTRUCTION CODE	
				CONTRACT MAINTENANCE 100% STATE	ROADWAY
70107025	CHANGEABLE MESSAGE SIGN	CAL DAY	14	0006	RURAL
Z0030850	TEMPORARY INFORMATION SIGNING	SQ FT	42		

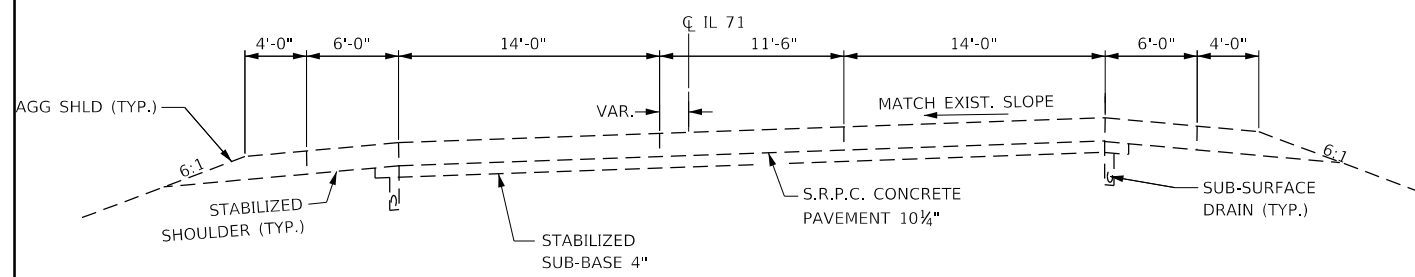
FILE NAME =	USER NAME = MARINIEJ	DESIGNED - RW	REVISED -	<b>STATE OF ILLINOIS DEPARTMENT OF TRANSPORTATION</b>	<b>SUMMARY OF QUANTITIES</b>	F.A.I. RTE.	SECTION	COUNTY	TOTAL SHEETS	SHEET NO.	
pw:\planroom.dot\illinois.gov\PWIDOT\Documents\IDOT	offices\District 3\Projects\0366\34\CADData\66J34-details.dgn	DRAWN - RW	REVISED -			39	(50-1,3)K & PP	LASALLE	16	4	
Default	PLOT SCALE = 3.9370' / mm	CHECKED - EP	REVISED -			CONTRACT NO. 66J34					
	PLOT DATE = 2/6/2020	DATE - 08/17/2018	REVISED -			SCALE:	SHEET 2	OF 2	SHEETS	STA.	TO STA.



## TYPICAL SECTION

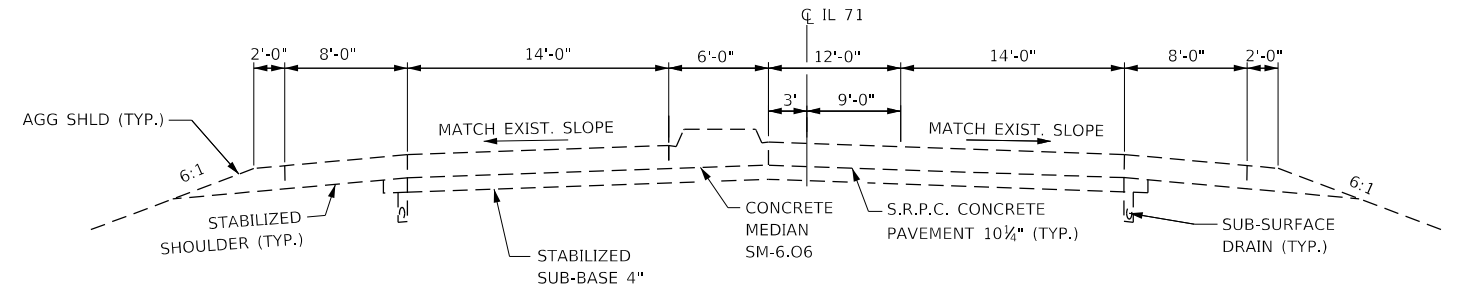
INTERSTATE ROUTE 39

FILE NAME =	USER NAME = woodshank1	DESIGNED - RW	REVISED -	<b>STATE OF ILLINOIS DEPARTMENT OF TRANSPORTATION</b>	<b>TYPICALS - I-39</b>	F.A.I. RTE.	SECTION	COUNTY	TOTAL SHEETS	SHEET NO.	
pw\0\IL084EBIDINTEG\Illinois.gov\PWIDOT\Documents\DOT Offices\District 3\Projects\I39\66J34\CADDData\66J34-deta\lsz	DOT Offices\District 3\Projects\I39\66J34\CADDData\66J34-deta\lsz	DRAWN - RW	REVISED -			39	(50-1.3)K & PP	LASALLE	16	5	
Default	PLOT SCALE = 100,0000' / in.	CHECKED - EP	REVISED -			CONTRACT NO. 66J34					
	PLOT DATE = 8/20/2018	DATE - 08/17/2018	REVISED -			SCALE:	SHEET 1	OF 3	SHEETS	STA.	TO STA.



**TYPICAL #1**

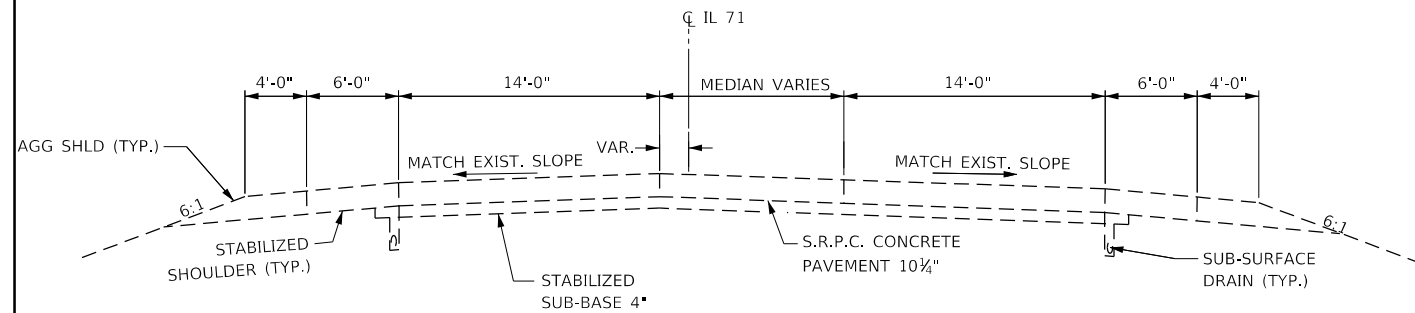
ILLINOIS ROUTE 71  
LOG MILE 0.00 TO 0.04



**TYPICAL#4**

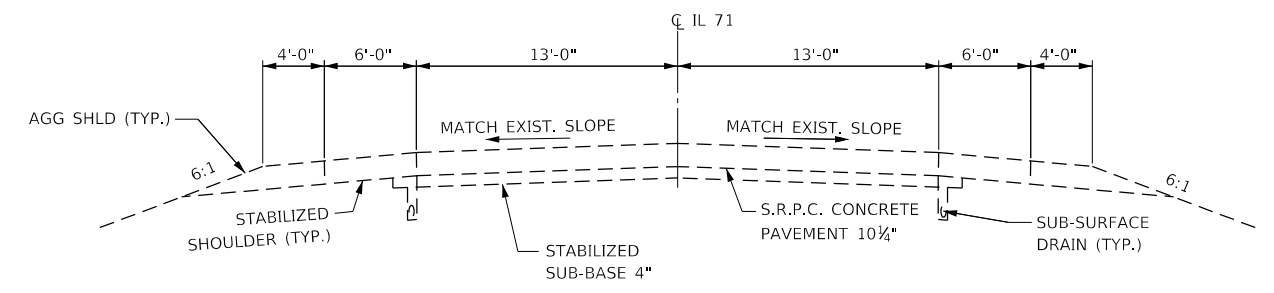
ILLINOIS ROUTE 71  
LOG MILE 0.23 TO 0.28  
LOG MILE 0.33 TO 0.40

**BRIDGE OMISSION: LOG MILE 0.28 TO 0.33**



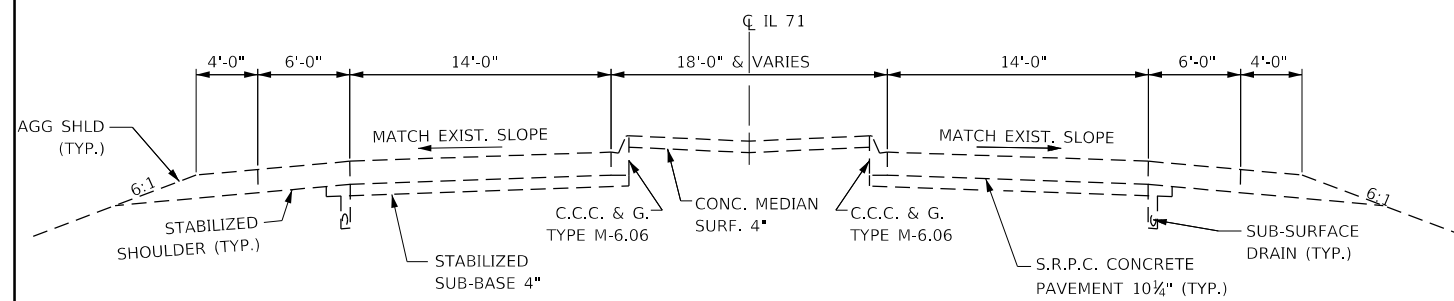
**TYPICAL #2**

ILLINOIS ROUTE 71  
LOG MILE 0.04 TO 0.11



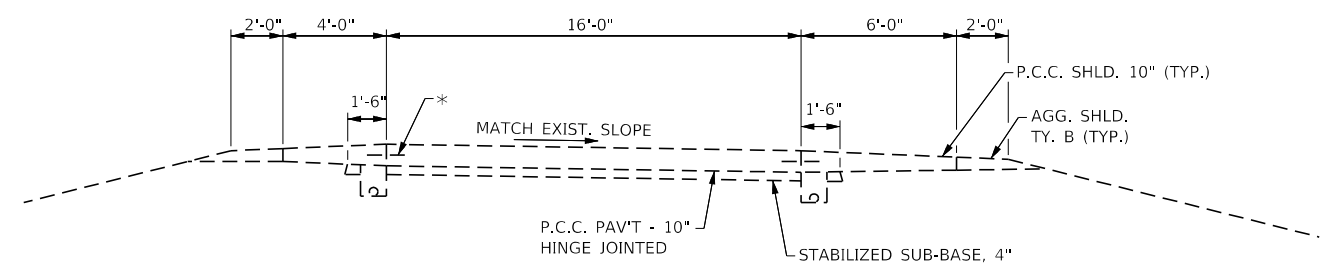
**TYPICAL #5**

ILLINOIS ROUTE 71  
LOG MILE 0.48 TO 0.62



**TYPICAL #3**

ILLINOIS ROUTE 71  
LOG MILE 0.11 TO 0.23  
LOG MILE 0.40 TO 0.48



**TYPICAL #6  
RAMPS A, B, C, & D**

\* NO. 6x24" TIE BARS  
AT 36" CTS. (TYP.)

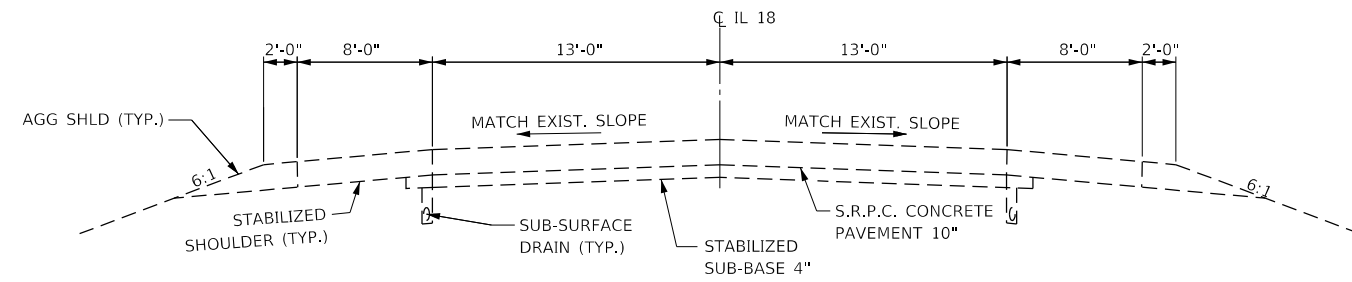
FILE NAME =	USER NAME = woodshankit	DESIGNED - RW	REVISED -
pw:\IL084EBIDINTEG\Illinois.gov\PWIDOT\Documents\DOT Offices\District 3\Projects\0366J34\CADD\066J34-deta\il.scp		DRAWN - RW	REVISED -
Default	PLOT SCALE = 100,0000' / in.	CHECKED - EP	REVISED -
	PLOT DATE = 8/20/2018	DATE - 08/17/2018	REVISED -

STATE OF ILLINOIS  
DEPARTMENT OF TRANSPORTATION

TYPICALS - IL 71

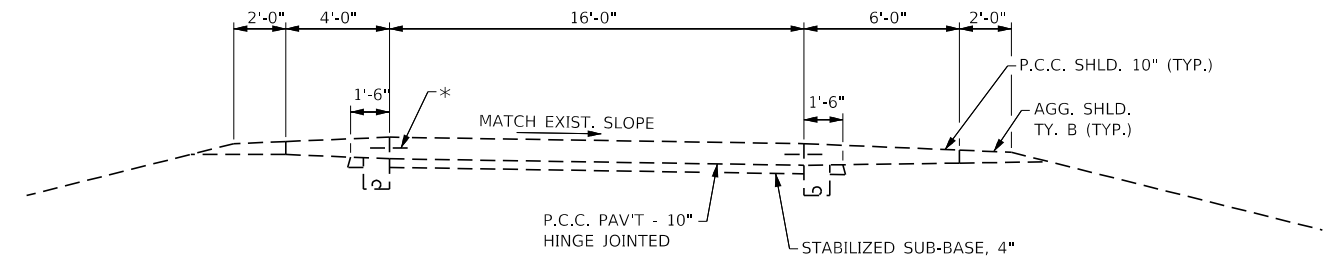
SCALE: SHEET 2 OF 3 SHEETS STA. TO STA.

F.A.I. RTE.	SECTION	COUNTY	TOTAL SHEETS	SHEET NO.
39	(50-1.3)K & PP	LASALLE	16	6
CONTRACT NO. 66J34				
ILLINOIS FED. AID PROJECT				



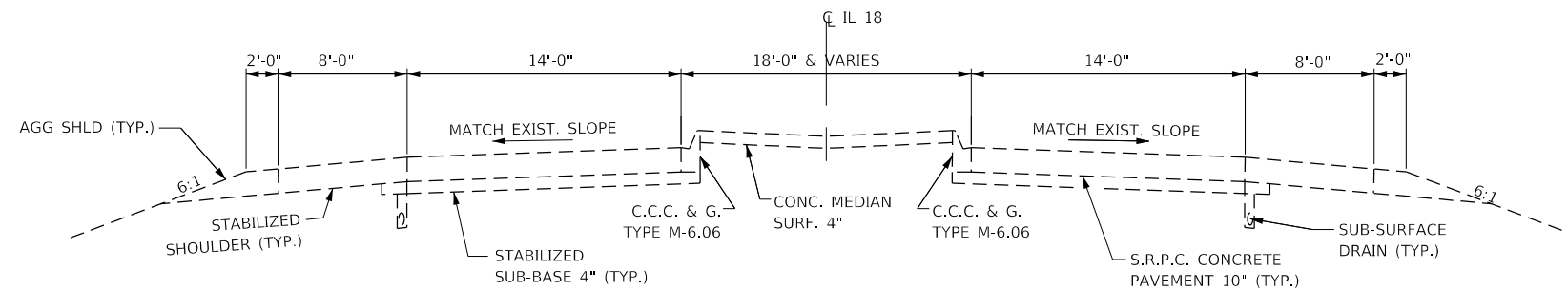
**TYPICAL #7**

ILLINOIS ROUTE 18  
LOG MILE 0.0 TO 0.07  
LOG MILE 0.50 TO 0.60



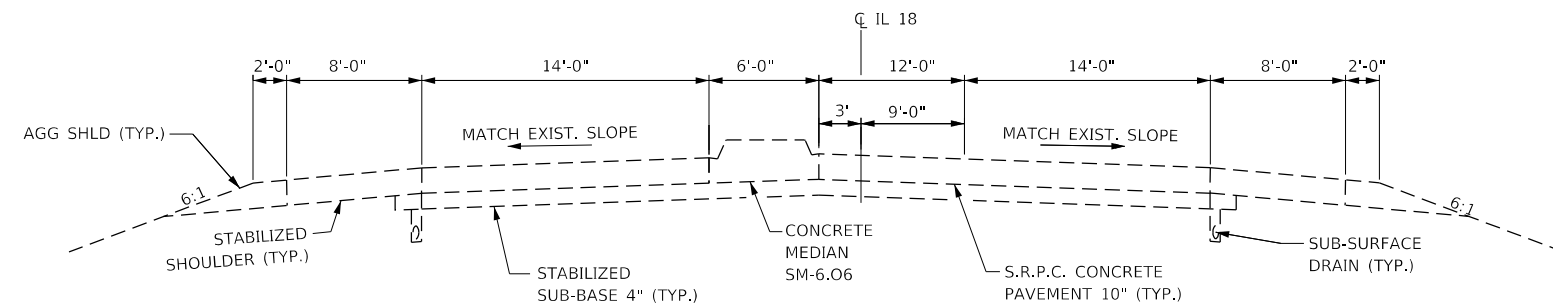
**TYPICAL #10  
RAMPS A, B, C, & D**

\* NO. 6x24" TIE BARS  
AT 36" CTS. (TYP.)



**TYPICAL #8**

ILLINOIS ROUTE 18  
LOG MILE 0.07 TO 0.21  
LOG MILE 0.37 TO 0.50



**TYPICAL #9**

ILLINOIS ROUTE 18  
LOG MILE 0.21 TO 0.26  
LOG MILE 0.32 TO 0.37

**BRIDGE OMISSION: LOG MILE 0.26 TO 0.32**

FILE NAME =	USER NAME = woodshankit	DESIGNED - RW	REVISED -	<b>STATE OF ILLINOIS DEPARTMENT OF TRANSPORTATION</b>	<b>TYPICALS - IL 18</b>			F.A.I. RTE.	SECTION	COUNTY	TOTAL SHEETS	SHEET NO.
Default	PLOT SCALE = 100.0000' / in.	CHECKED - EP	REVISED -					39	(50-1.3)K & PP	LASALLE	16	7
	PLOT DATE = 8/20/2018	DATE - 08/17/2018	REVISED -		SCALE: SHEET 3 OF 3 SHEETS STA. TO STA.			CONTRACT NO. 66J34				
					ILLINOIS FED. AID PROJECT							

**SCHEDULE - PATCHING  
IL 71 MAINLINE (WESTBOUND LANES)**

LOCATION	LEFT TURN LANE				DRIVING LANE			
	PATCH LENGTH	CLASS B	DOWEL BARS 1 1/2"	SAW CUTS	PATCH LENGTH	CLASS B	DOWEL BARS 1 1/2"	SAW CUTS
		TYPE II 10"				TYPE II 10"		
LOG MILE	(FT)	SQ YD	EACH	FOOT	(FT)	SQ YD	EACH	FOOT
0.02					6	9	24	54
0.04					6	9	24	54
0.06					6	9	24	54
0.08					6	9	24	54
0.12					6	9	24	54
0.15					6	9	24	54
0.18					6	9	24	54
0.20					6	9	24	54
0.21					6	9	24	54
0.22					6	9	24	54
0.22					6	9	24	54
0.23					6	9	24	54
0.23					6	9	24	54
0.24					6	9	24	54
0.33	6	8	20	48	6	9	24	54
0.34	6	8	20	48	6	9	24	54
0.41					6	9	24	54
0.42					6	9	24	54
0.42					6	9	24	54
0.43					6	9	24	54
0.43					6	9	24	54
0.45					6	9	24	54
0.46					6	9	24	54
0.46					6	9	24	54
0.47					6	9	24	54
0.48					6	9	24	54
0.49					6	9	22	51
0.51					6	9	22	51
0.52					6	9	22	51
0.53					6	9	22	51
0.54					6	9	22	51
0.54					6	9	22	51
0.55					6	9	22	51
0.56					6	9	22	51
0.57					6	9	22	51
0.58					6	9	22	51
0.61					6	9	22	51
0.62					6	9	22	51
<b>TOTALS</b>		<b>16</b>	<b>40</b>	<b>96</b>		<b>342</b>	<b>888</b>	<b>2016</b>

**SCHEDULE - PATCHING  
RAMP A (SOUTHBOUND OFF RAMP)**

LOCATION	OFF RAMP				
	PATCH LENGTH	CLASS A	PATCH REINF.	SAW CUTS	TIE BARS
		TYPE IV 10"			
LOG MILE	FEET	SQ YD	SQ YD	FOOT	EACH
0.00	60	107	107	152	72
0.01	20	36	36	72	52
<b>TOTALS</b>		<b>143</b>	<b>143</b>	<b>224</b>	<b>124</b>

RAMP A LOG MILE AT 0.0 = BEGINNING OF RAMP PAVEMENT (1' STUB)

**SCHEDULE - PATCHING  
RAMP A (SOUTHBOUND OFF RAMP)**

LOCATION	OFF RAMP			
	PATCH LENGTH	CLASS B	DOWEL BARS 1 1/2"	SAW CUTS
		TYPE II 10"		
LOG MILE	(FT)	SQ YD	EACH	FOOT
0.22	6	11	28	60
0.23	6	11	28	60
<b>TOTALS</b>		<b>22</b>	<b>56</b>	<b>120</b>

**SCHEDULE - PATCHING  
RAMP B (NORTHBOUND ON RAMP)**

LOCATION	ON RAMP					
	PATCH LENGTH	CLASS B		DOWEL BARS 1 1/2"	SAW CUTS	WELDED WIRE REINF.
		TYPE II 10"	TYPE IV 10"			
LOG MILE	(FT)	SQ YD	SQ YD	EACH	FOOT	SQ YD
0.00	6	11		28	60	
0.00	6	11		28	60	
0.05	6	11		28	60	
0.12	6	11		28	60	
0.15	6	11		28	60	
0.22	15		27	28	78	27
<b>TOTALS</b>		<b>55</b>	<b>27</b>	<b>168</b>	<b>378</b>	<b>27</b>

RAMP B LOG MILE 0.0 = TOP OF RAMP AT IL. 71



**SCHEDULE - PATCHING  
IL 71 MAINLINE (EASTBOUND LANES)**

LOCATION	LEFT TURN LANE				DRIVING LANE					
	PATCH LENGTH	CLASS B	DOWEL BARS 1 1/2"	SAW CUTS	PATCH LENGTH	CLASS B		DOWEL BARS 1 1/2"	SAW CUTS	WELDED WIRE REINF.
		TYPE II 10"				TYPE III 10"				
LOG MILE	(FT)	SQ YD	EACH	FOOT	(FT)	SQ YD	SQ YD	EACH	FOOT	SQ YD
0.61					6	9		22	51	
0.60					6	9		22	51	
0.60					6	9		22	51	
0.59					6	9		22	51	
0.59					6	9		22	51	
0.58					6	9		22	51	
0.58					6	9		22	51	
0.57					6	9		22	51	
0.57					15		22	22	69	22
0.56					6	9		22	51	
0.56					6	9		22	51	
0.55					6	9		22	51	
0.53					6	9		22	51	
0.52					6	9		22	51	
0.47					6	9		24	54	
0.46					6	9		24	54	
0.45					6	9		24	54	
0.43					6	9		24	54	
0.42					6	9		24	54	
0.41					6	9		24	54	
0.41					6	9		24	54	
0.40					6	9		24	54	
0.40					6	9		24	54	
0.39					6	9		24	54	
0.38					6	9		24	54	
0.29	6	8	20	48	6	9		24	54	
0.28					6	9		24	54	
0.20					6	9		24	54	
0.19					6	9		24	54	
0.19					6	9		24	54	
0.18					6	9		24	54	
0.18					6	9		24	54	
0.17					6	9		24	54	
0.10					6	9		24	54	
0.09					6	9		24	54	
<b>TOTALS</b>		8	20	48		306	22	812	1866	22

**SCHEDULE - PATCHING  
RAMP D (SOUTHBOUND ON RAMP)**

LOCATION	ON RAMP						
	PATCH LENGTH	CLASS B		DOWEL BARS 1 1/2"	SAW CUTS	WELDED WIRE REINF.	TIE BARS 3/4"
		TYPE II 10"	TYPE IV 10"				
LOG MILE	(FT)	SQ YD	SQ YD	EACH	FOOT	SQ YD	EACH
0.03	6	11		28	60		
0.04	20		36	28	88	36	10
0.05	6	11		28	60		
0.06	6	11		28	60		
<b>TOTALS</b>		33	36	112	268	36	10

RAMP D LOG MILE 0.0 = TOP OF RAMP AT IL. 71

**SCHEDULE - PATCHING  
IL 18 MAINLINE (WESTBOUND LANES)**

LOCATION	LEFT TURN LANE				DRIVING LANE			
	PATCH LENGTH	CLASS B	DOWEL BARS	SAW CUTS	PATCH LENGTH	CLASS B	DOWEL BARS	SAW CUTS
		TYPE II	1 1/2"			TYPE II	1 1/2"	
LOG MILE	(FT)	SQ YD	EACH	FOOT	(FT)	SQ YD	EACH	FOOT
0.01					6	9	22	51
0.12					6	9	24	54
0.16					6	9	24	54
0.18					6	9	24	54
0.22					6	9	24	54
0.24					6	9	24	54
0.25					6	9	24	54
0.33	6	8	20	48	6	9	24	54
0.34	6	8	20	48				
0.35	6	8	20	48	6	9	24	54
0.36	6	8	20	48	6	9	24	54
0.38					6	9	24	54
0.40					6	9	24	54
0.41					6	9	24	54
0.54					6	9	22	51
0.60	END OF CONCRETE SECTION				END OF CONCRETE SECTION			
<b>TOTALS</b>		<b>32</b>	<b>80</b>	<b>192</b>		<b>126</b>	<b>332</b>	<b>750</b>

**SCHEDULE - PATCHING  
RAMP A (SOUTHBOUND OFF RAMP)**

LOCATION	OFF RAMP						
	PATCH LENGTH	CLASS B		DOWEL BARS	SAW CUTS	WELDED WIRE REINF.	TIE BARS
		TYPE IV	10"				
LOG MILE	(FT)	SQ YD	10"	EACH	FOOT	SQ YD	EACH
0.10	60	107		28	168	107	30
<b>TOTALS</b>		<b>107</b>		<b>28</b>	<b>168</b>	<b>107</b>	<b>30</b>

RAMP A LOG MILE 0.0 = BEGINNING OF RAMP PAVEMENT (1' STUB)

**SCHEDULE - PATCHING  
RAMP B (NORTHBOUND ON RAMP)**

LOCATION	PATCH LENGTH	ON RAMP					
		CLASS B		DOWEL BARS	SAW CUTS	WELDED WIRE REINF.	TIE BARS
		TYPE II	TYPE IV				
LOG MILE	(FT)	10"	10"	1 1/2"	FOOT	SQ YD	EACH
0.01	6	11		28	60		
0.01	20		36	28	88		10
0.21	15		27	28	78		
<b>TOTALS</b>		<b>11</b>	<b>63</b>	<b>84</b>	<b>226</b>	<b>63</b>	<b>10</b>

RAMP B LOG MILE 0.0 = TOP OF RAMP AT IL. 18

**SCHEDULE - PATCHING  
IL 18 MAINLINE (EASTBOUND LANES)**

LOCATION	LEFT TURN LANE				DRIVING LANE			
	PATCH LENGTH	CLASS B	DOWEL BARS	SAW CUTS	PATCH LENGTH	CLASS B	DOWEL BARS	SAW CUTS
		TYPE II	1 1/2"			TYPE II	1 1/2"	
LOG MILE	(FT)	SQ YD	EACH	FOOT	(FT)	SQ YD	EACH	FOOT
0.55					6	9	22	51
0.52					6	9	22	51
0.50					6	9	24	54
0.49					6	9	24	54
0.47					6	9	24	54
0.46					6	9	24	54
0.44					6	9	24	54
0.43					6	9	24	54
0.42					6	9	24	54
0.41					6	9	24	54
0.36					6	9	24	54
0.28	6	8	20	48	6	9	24	54
0.26	6	8	20	48				
0.25					6	9	24	54
0.20					6	9	24	54
0.19					6	9	24	54
0.18					6	9	24	54
0.17					6	9	24	54
0.15					6	9	24	54
0.13					6	9	24	54
0.12					6	9	24	54
0.11					6	9	24	54
0.11					6	9	24	54
0.10					6	9	24	54
0.09					6	9	24	54
0.08					6	9	24	54
0.07					6	9	24	54
0.04					6	9	22	51
<b>TOTALS</b>		<b>16</b>	<b>40</b>	<b>96</b>		<b>243</b>	<b>642</b>	<b>1449</b>

**SCHEDULE - PATCHING  
RAMP C (NORTHBOUND OFF RAMP)**

LOCATION	PATCH LENGTH	OFF RAMP			
		CLASS A	PATCH REINF.	SAW CUTS	TIE BARS
LOG MILE	FEET	10"	SQ YD	FOOT	EACH
0.00	15	27	27	62	42
<b>TOTALS</b>		<b>27</b>	<b>27</b>	<b>62</b>	<b>42</b>

RAMP C LOG MILE 0.0 = BEGINNING OF RAMP PAVEMENT (1' STUB)

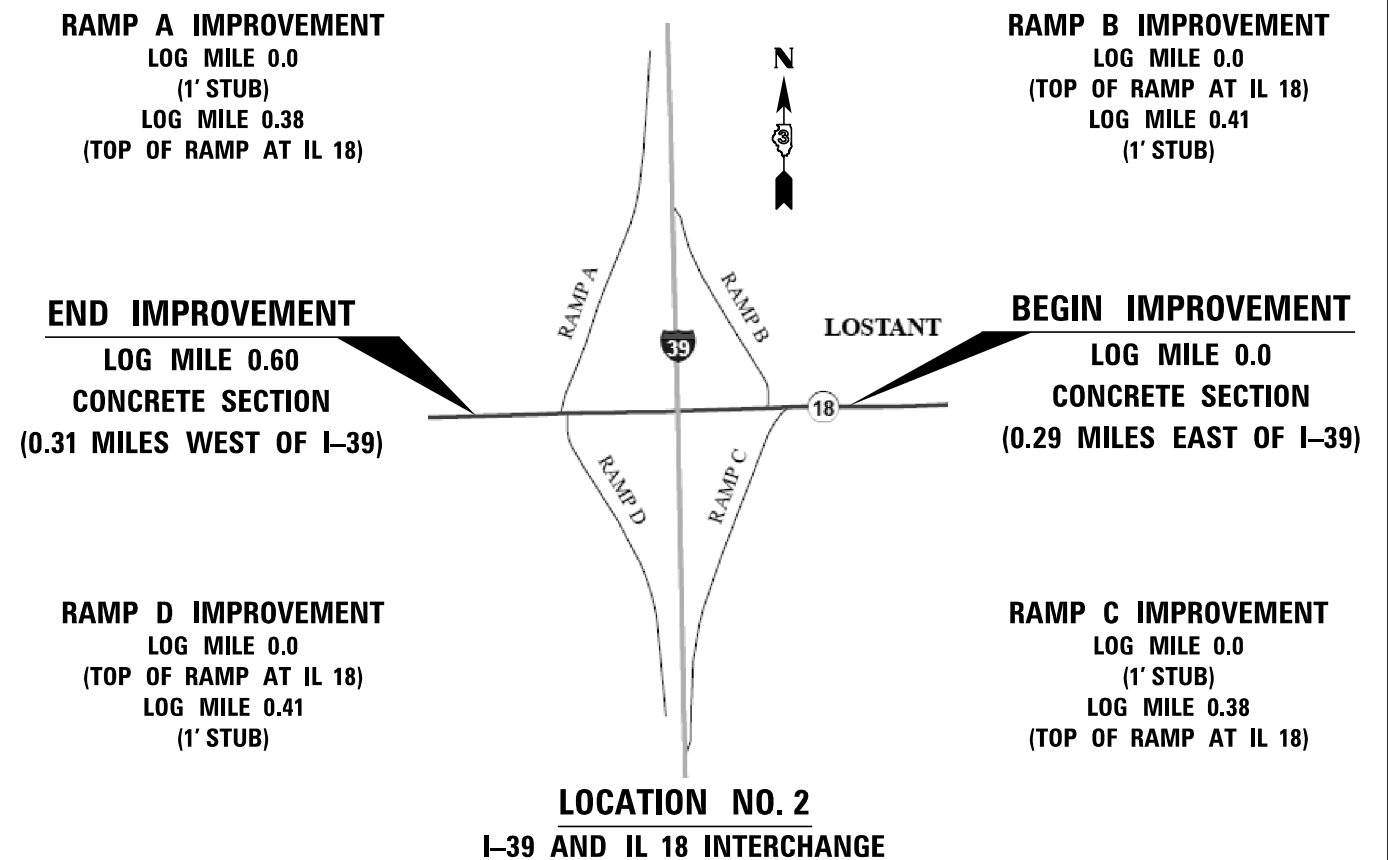
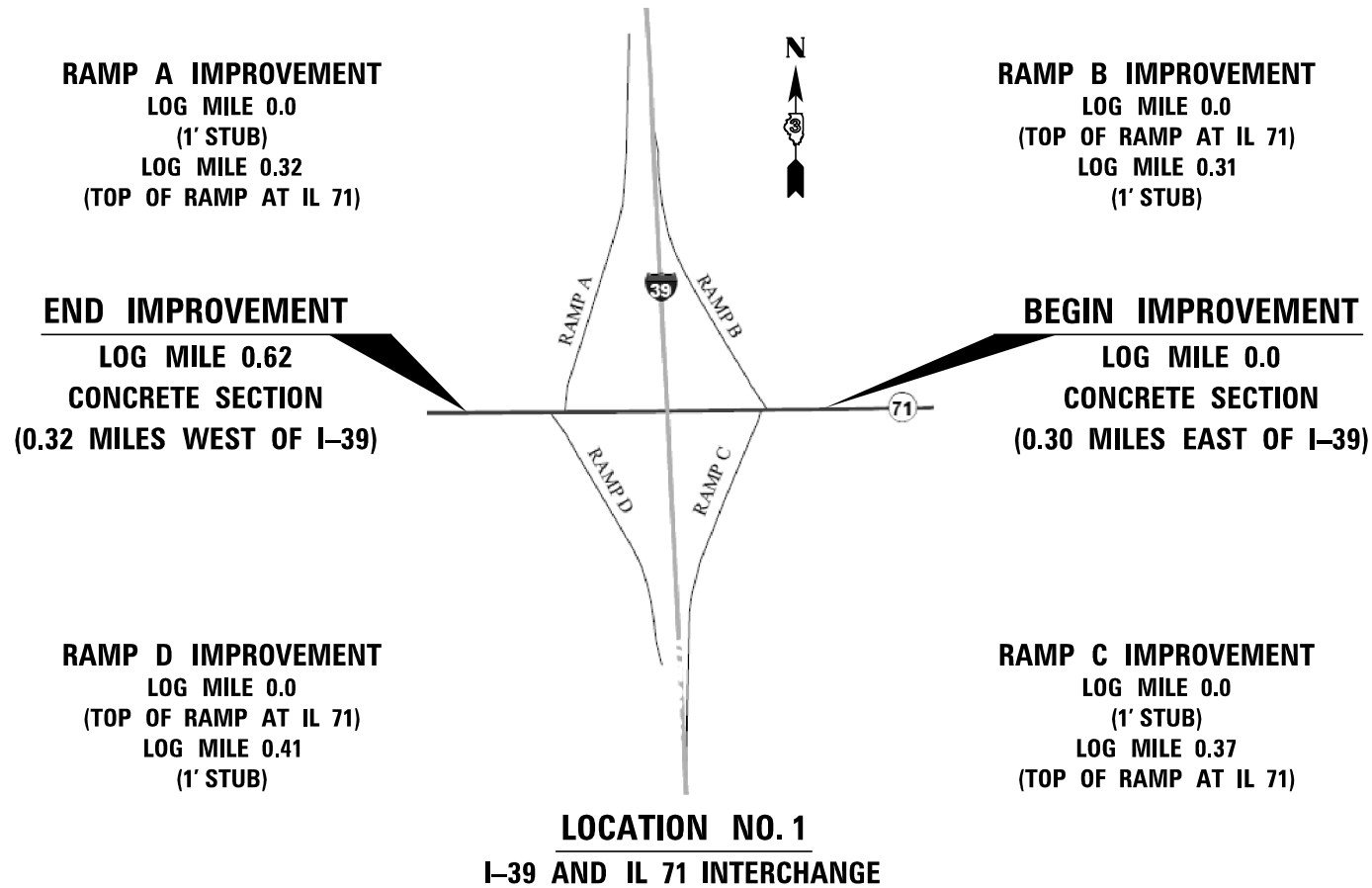
**SCHEDULE - PATCHING  
RAMP C (NORTHBOUND OFF RAMP)**

LOCATION	PATCH LENGTH	OFF RAMP		
		CLASS B	DOWEL BARS	SAW CUTS
		TYPE II	1 1/2"	
LOG MILE	(FT)	SQ YD	EACH	FOOT
0.23	8	14	28	64
<b>TOTALS</b>		<b>14</b>	<b>28</b>	<b>64</b>

**SCHEDULE - PATCHING  
RAMP D (SOUTHBOUND ON RAMP)**

LOCATION	PATCH LENGTH	ON RAMP		
		CLASS B	DOWEL BARS	SAW CUTS
		TYPE II	1 1/2"	
LOG MILE	(FT)	SQ YD	EACH	FOOT
0.02	6	11	28	60
0.20	8	14	28	64
<b>TOTALS</b>		<b>25</b>	<b>56</b>	<b>124</b>

RAMP D LOG MILE 0.0 = TOP OF RAMP AT IL. 18



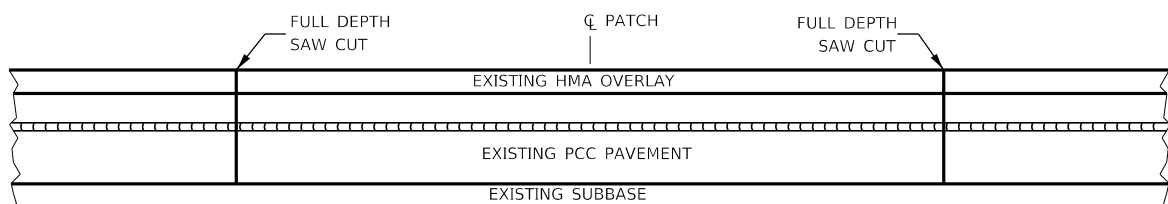
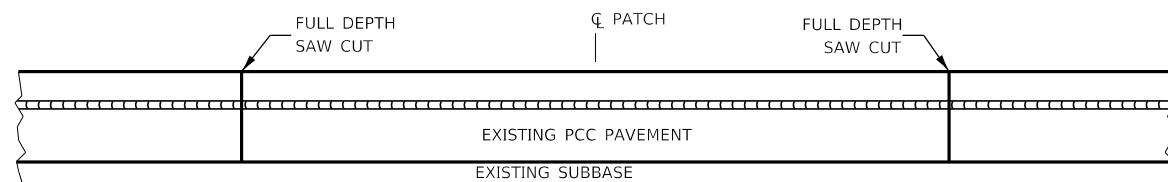
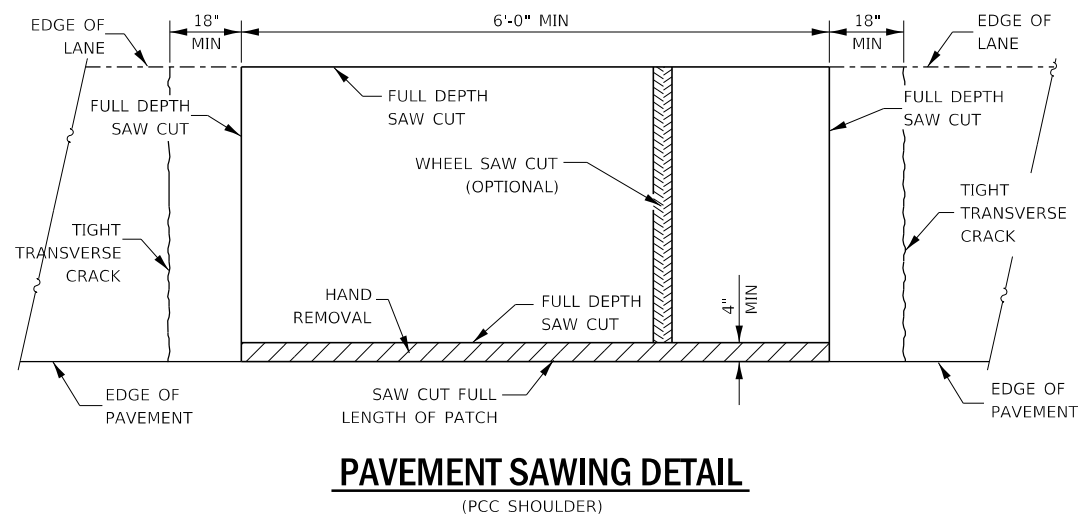
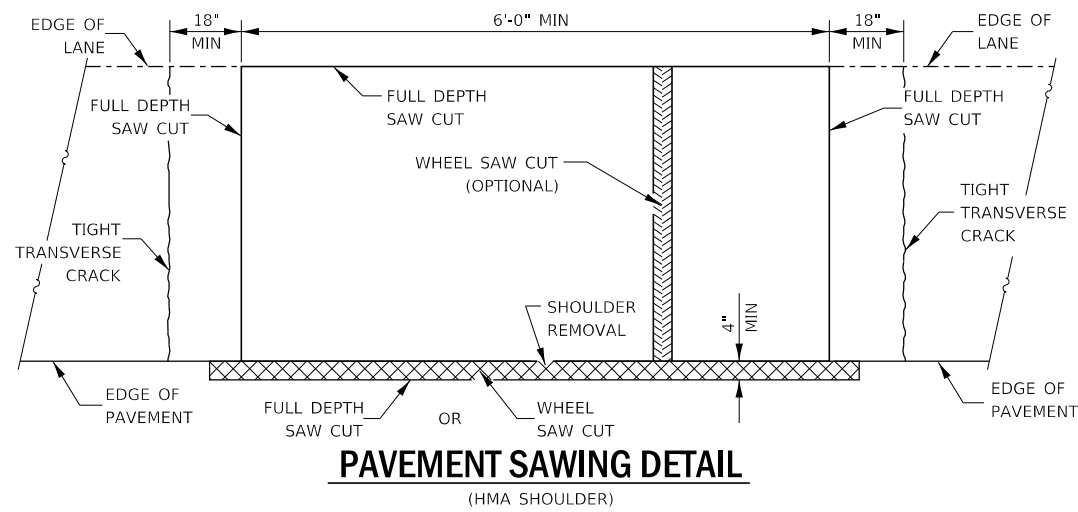
FILE NAME =	USER NAME = woodshank1	DESIGNED - RW	REVISED -
pw:\IL084EBID\INTEGR\Incls\gov\PWIDOT\Documents\DOT Offices\District 3\Projects\0366J34\CADDData\66J34-deta\lsz		DRAWN - RW	REVISED -
Default	PLOT SCALE = 100,0000' / In.	CHECKED - EP	REVISED -
	PLOT DATE = 8/20/2018	DATE - 08/17/2018	REVISED -

STATE OF ILLINOIS  
DEPARTMENT OF TRANSPORTATION

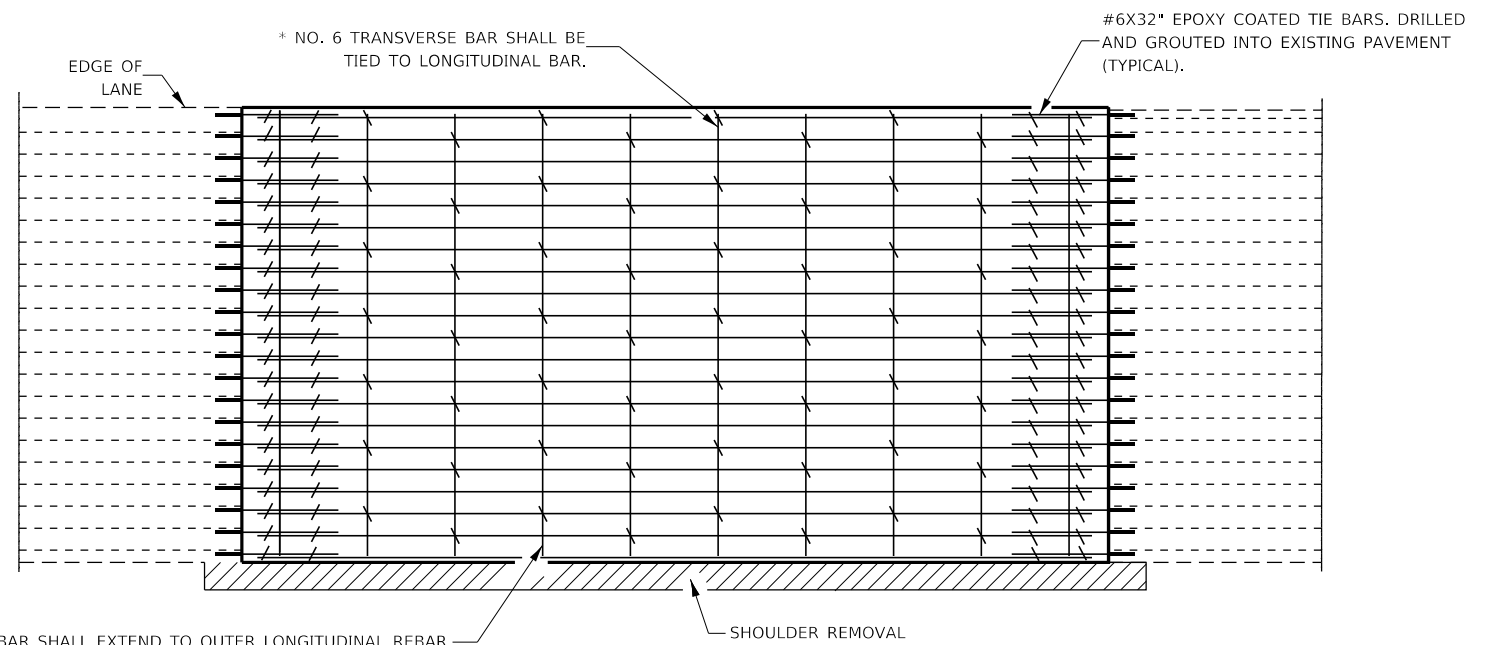
LOCATION MAP

SCALE: SHEET 1 OF 1 SHEETS STA. TO STA.

F.A.I. RTE.	SECTION	COUNTY	TOTAL SHEETS	SHEET NO.
39	(50-1.3)K & PP	LASALLE	16	11
CONTRACT NO. 66J34				
ILLINOIS FED. AID PROJECT				

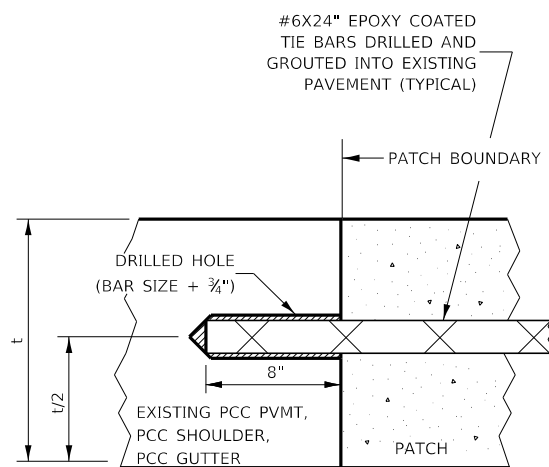


**PAVEMENT SAWING DETAIL FOR CLASS A PATCHING (CRC PAVEMENT)**



TRANSVERSE REBAR SHALL EXTEND TO OUTER LONGITUDINAL REBAR WHILE PROVIDING A MINIMUM 3" CLEARANCE FROM EXISTING PAVEMENT EDGE

**PAVEMENT REINFORCEMENT DETAIL**



**LONGITUDINAL CONSTRUCTION JOINT**

PATCHES MORE THAN 20' IN LENGTH SHALL BE TIED TO ADJACENT PAVEMENT, PCC SHOULDERS OR PCC CURB AND GUTTER WITH #6x24" EPOXY COATED TIE BARS AT 36" CENTERS.

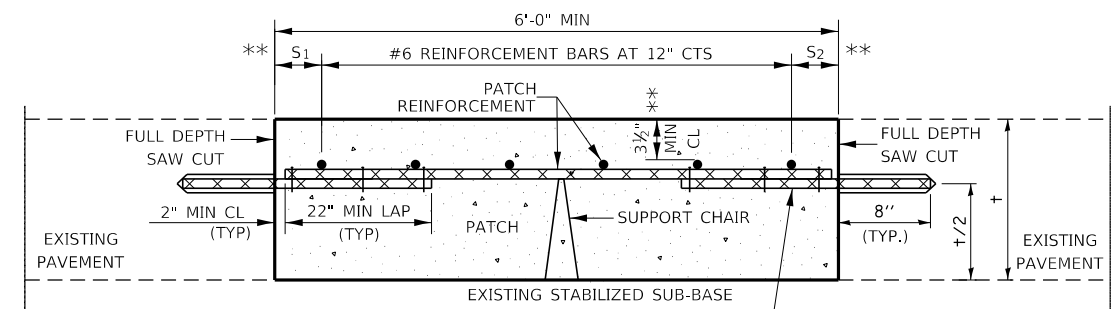
**NOTES:**

EXISTING LONGITUDINAL REINFORCEMENT SPACING: 6 3/4"

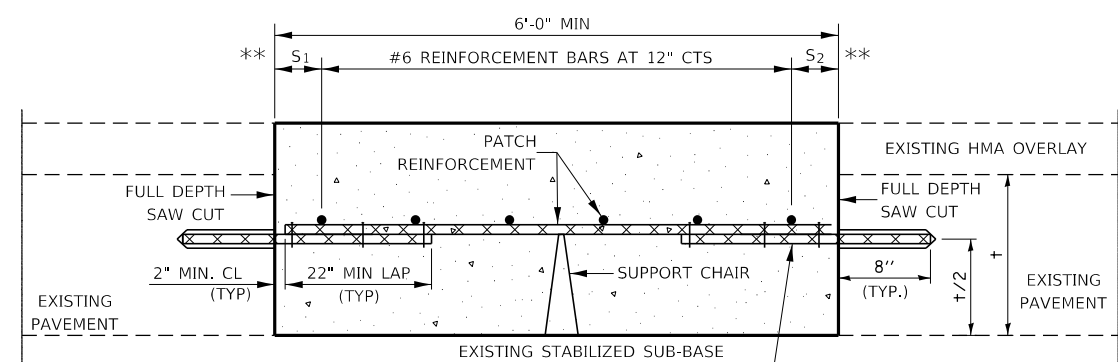
SPACING OF NEW LONGITUDINAL REINFORCEMENT AND NEW LONGITUDINAL TIE BARS SHALL MATCH SPACING OF EXISTING REINFORCEMENT AND SHALL BE TIED TOGETHER WITH A MINIMUM OF TWO TIES PER BAR.

\* EVERY THIRD INTERSECTION MUST BE TIED. WHEN THE MINIMUM CLEARANCE CANNOT BE OBTAINED WITH THE TRANSVERSE REBAR ON TOP, THEN THE TRANSVERSE REBAR SHALL BE TIED TO THE BOTTOM OF THE LONGITUDINAL REBAR.

\*\* VARIABLES WHERE S<sub>1</sub> AND S<sub>2</sub> ARE 2 1/2" MIN. AND 12" MAX.



**WITHOUT HMA OVERLAY**



**WITH HMA OVERLAY**

**PATCHING DETAIL FOR CLASS A PATCHING (CRC PAVEMENT)**

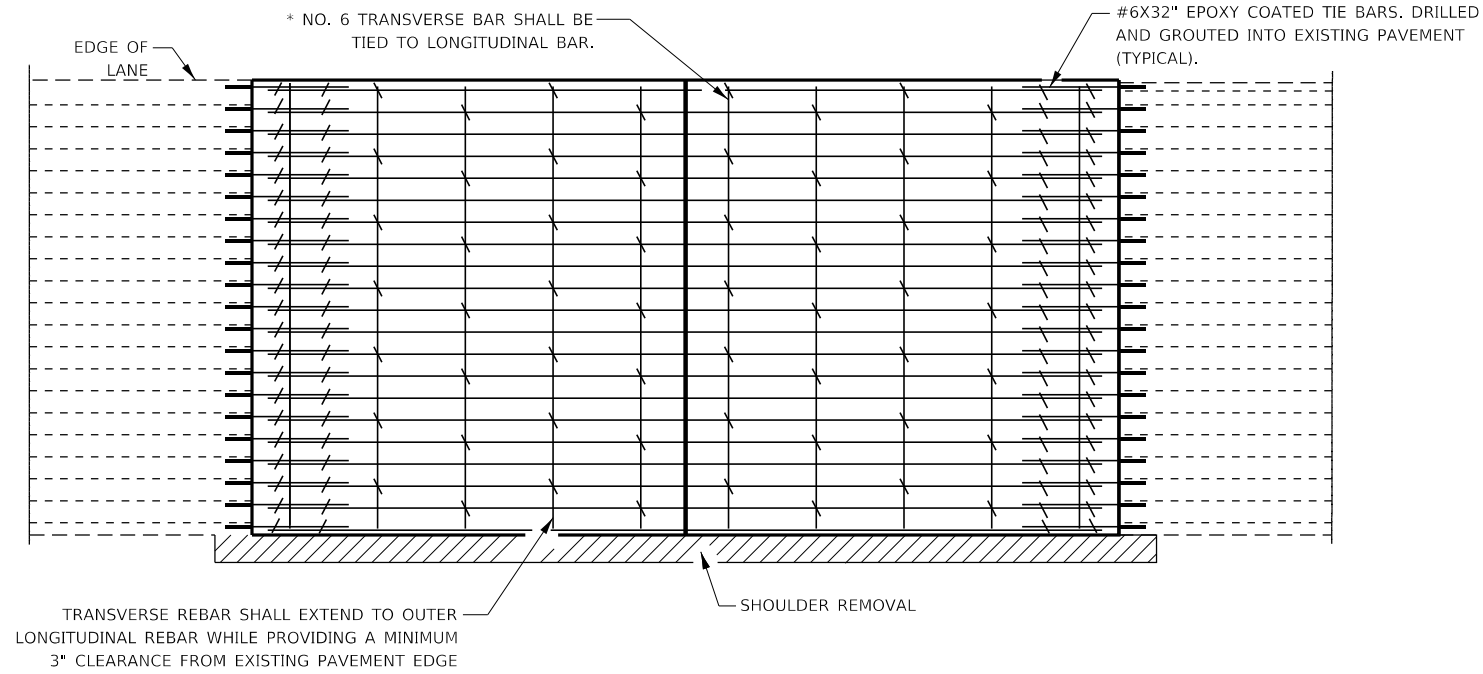
FILE NAME =	USER NAME = woodshank1	DESIGNED - RW	REVISED -
pw\01\084EB\INTEG\Illinois.gov\PWIDOT\Documents\DOT\Office\District 3\Projects\0366\J34\CADData\66J34-deta\1.scp		DRAWN - RW	REVISED -
Default	PLOT SCALE = 100,0000' / in.	CHECKED - EP	REVISED -
	PLOT DATE = 8/20/2018	DATE - 08/17/2018	REVISED -

STATE OF ILLINOIS  
DEPARTMENT OF TRANSPORTATION

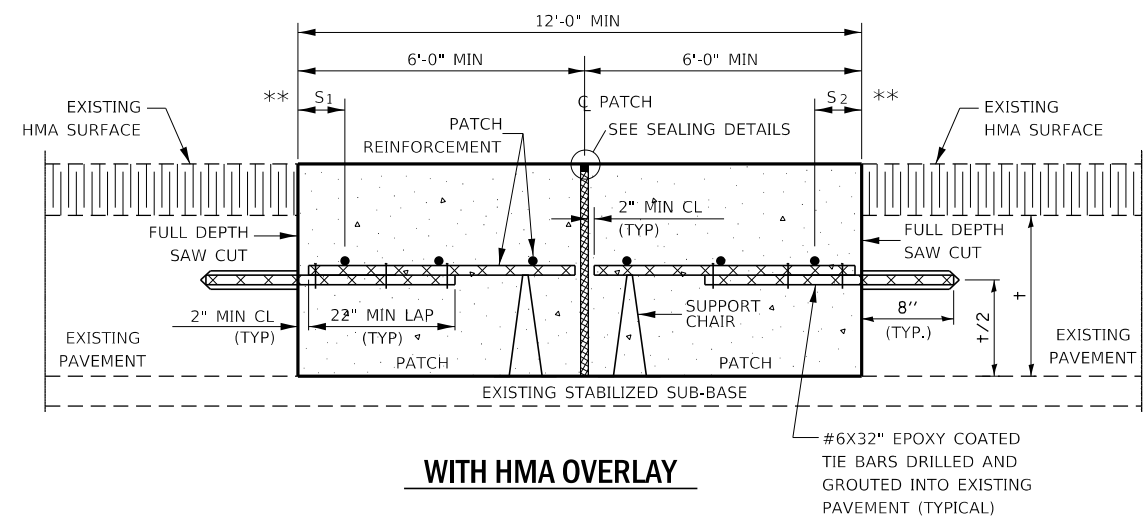
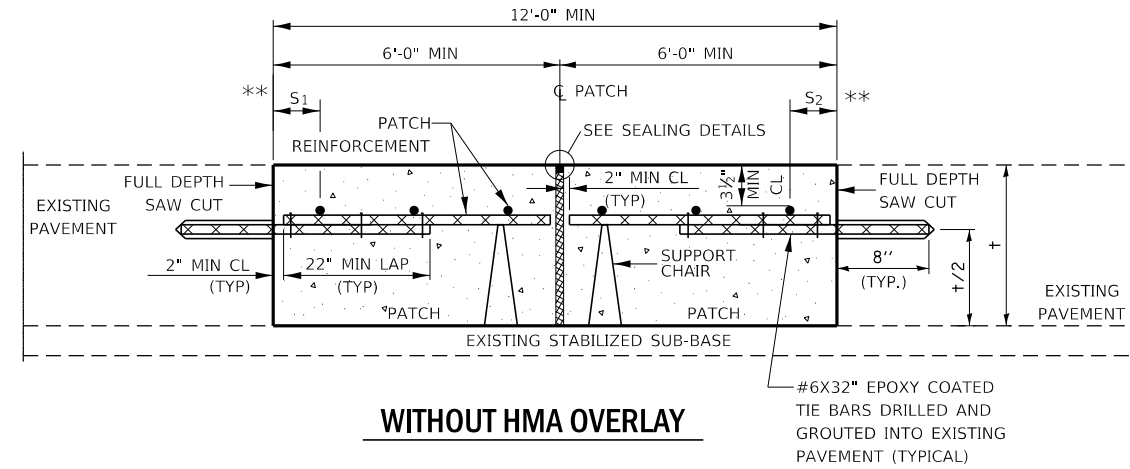
CLASS A PATCHING DETAILS

SCALE: SHEET 1 OF 2 SHEETS STA. TO STA.

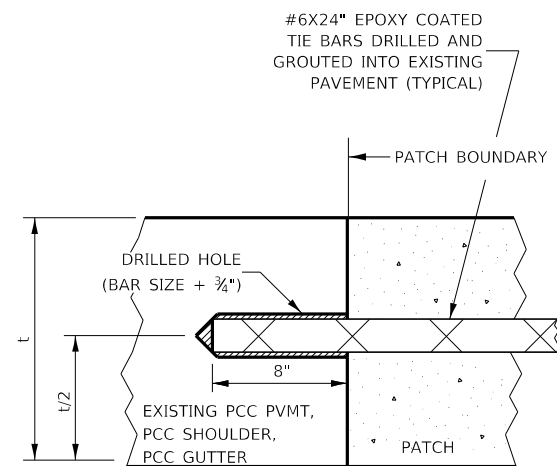
F.A.I. RTE.	SECTION	COUNTY	TOTAL SHEETS	SHEET NO.
39	(50-1.3)K & PP	LASALLE	16	12
CONTRACT NO. 66J34				
ILLINOIS FED. AID PROJECT				



**PAVEMENT REINFORCEMENT DETAIL**

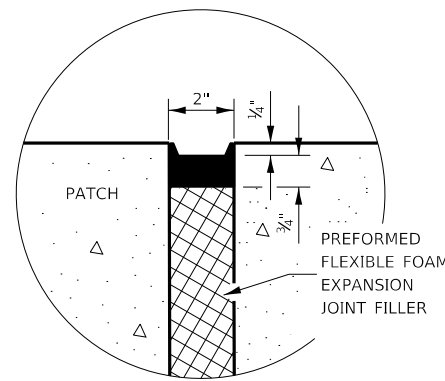


**CLASS A PATCH WITH EXPANSION JOINT**

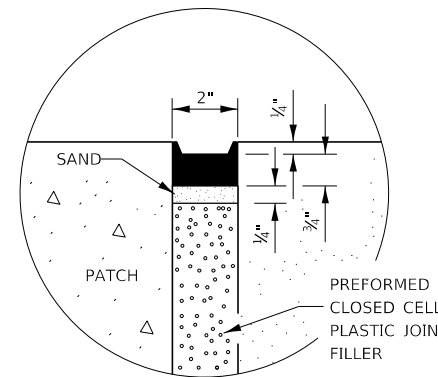


**LONGITUDINAL CONSTRUCTION JOINT**

PATCHES MORE THAN 20' IN LENGTH SHALL BE TIED TO ADJACENT PAVEMENT, PCC SHOULDERS OR PCC CURB AND GUTTER WITH #6X24" EPOXY COATED TIE BARS AT 36" CENTERS.



**SEALING DETAIL**



**SEALING DETAIL**

**NOTES:**

EXISTING LONGITUDINAL REINFORCEMENT SPACING;  $\pm 6\frac{3}{4}$ ".

SPACING OF NEW LONGITUDINAL REINFORCEMENT AND NEW LONGITUDINAL TIE BARS SHALL MATCH SPACING OF EXISTING REINFORCEMENT AND SHALL BE TIED TOGETHER WITH A MINIMUM OF TWO TIES PER BAR.

SUPPORT CHAIRS SHALL BE REQUIRED WHENEVER PATCH LENGTH EXCEEDS 6'-0"

\* EVERY THIRD INTERSECTION MUST BE TIED. WHEN THE MINIMUM CLEARANCE CANNOT BE OBTAINED WITH THE TRANSVERSE REBAR ON TOP, THEN THE TRANSVERSE REBAR SHALL BE TIED TO THE BOTTOM OF THE LONGITUDINAL REBAR.

\*\* VARIABLES WHERE  $S_1$  AND  $S_2$  ARE  $2\frac{1}{2}$ " MIN. AND 12" MAX.

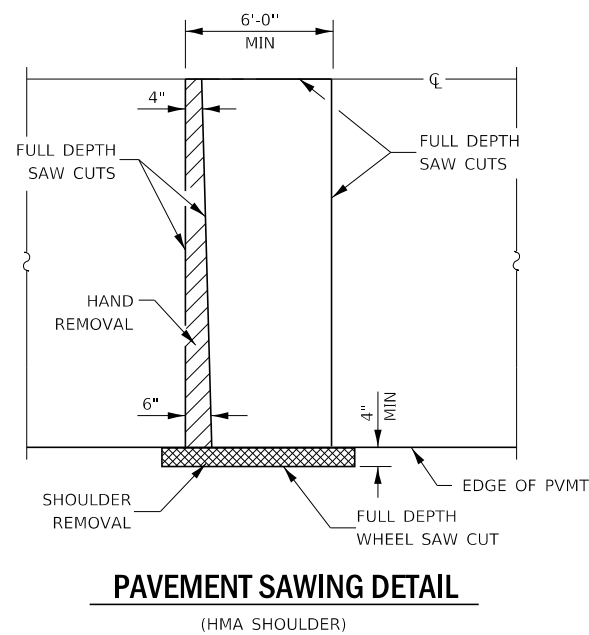
FILE NAME =	USER NAME = woodshank1	DESIGNED - RW	REVISED -
pw\01\084EB\INTEG\Illinois.gov\PWIDOT\Documents\DOT Offices\District 3\Projects\0366J34\CADDData\66J34-deta\1.scp		DRAWN - RW	REVISED -
Default	PLOT SCALE = 100.0000' / in.	CHECKED - EP	REVISED -
	PLOT DATE = 8/20/2018	DATE - 08/17/2018	REVISED -

STATE OF ILLINOIS  
DEPARTMENT OF TRANSPORTATION

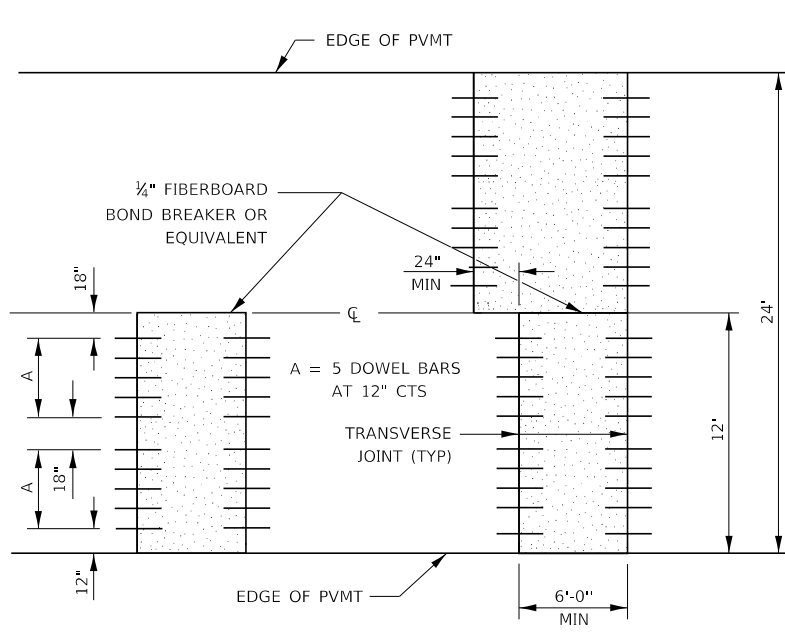
CLASS A PATCHING DETAILS

SCALE: SHEET 2 OF 2 SHEETS STA. TO STA.

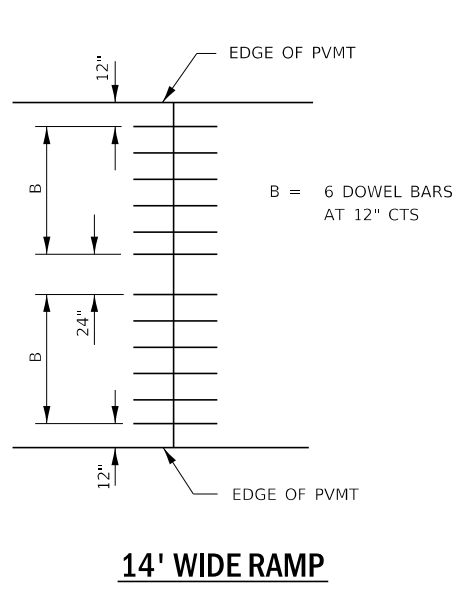
F.A.I. RTE.	SECTION	COUNTY	TOTAL SHEETS	SHEET NO.
39	(50-1.3)K & PP	LASALLE	16	13
CONTRACT NO. 66J34				
ILLINOIS FED. AID PROJECT				



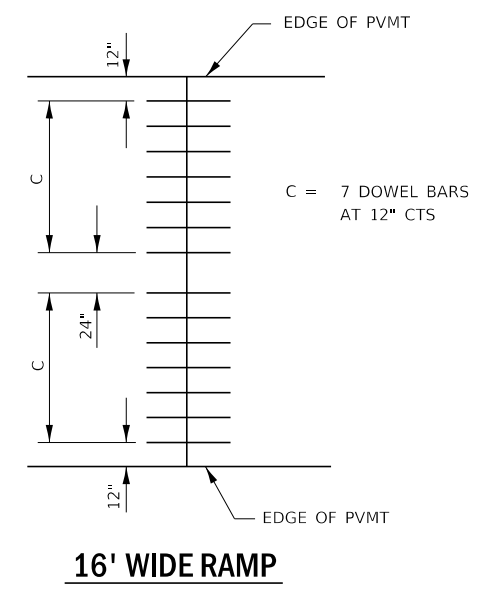
**PAVEMENT SAWING DETAIL**  
(HMA SHOULDER)



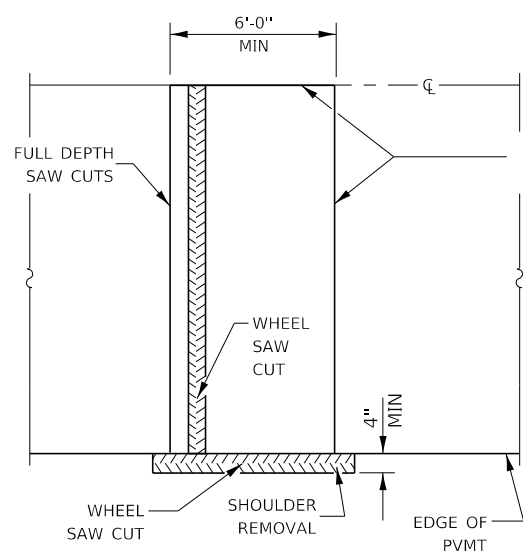
**12' WIDE LANES**



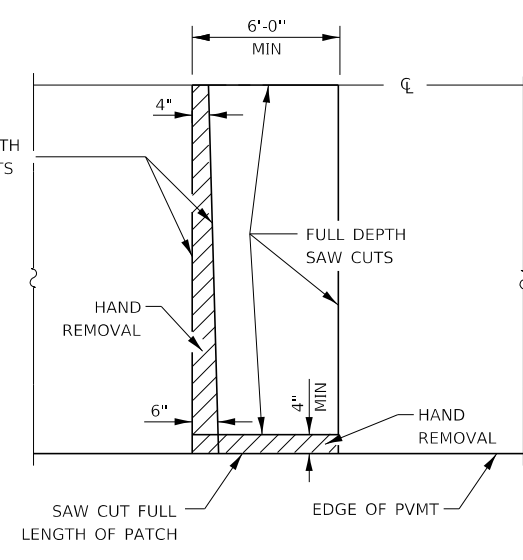
**14' WIDE RAMP**



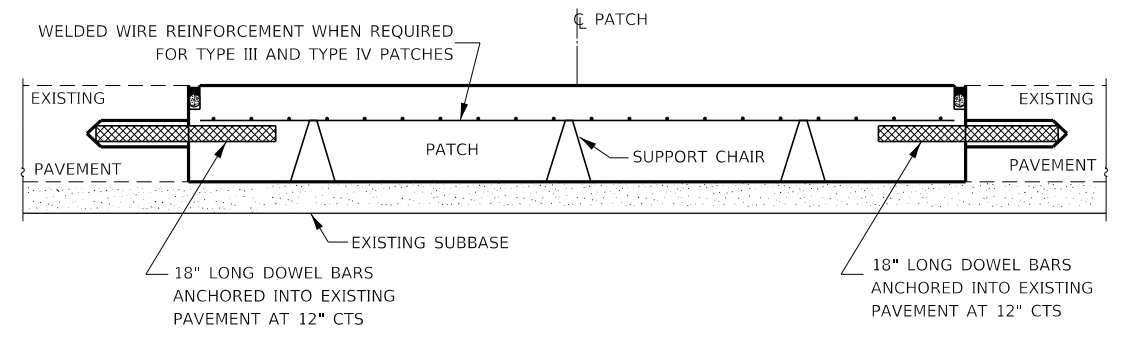
**16' WIDE RAMP**



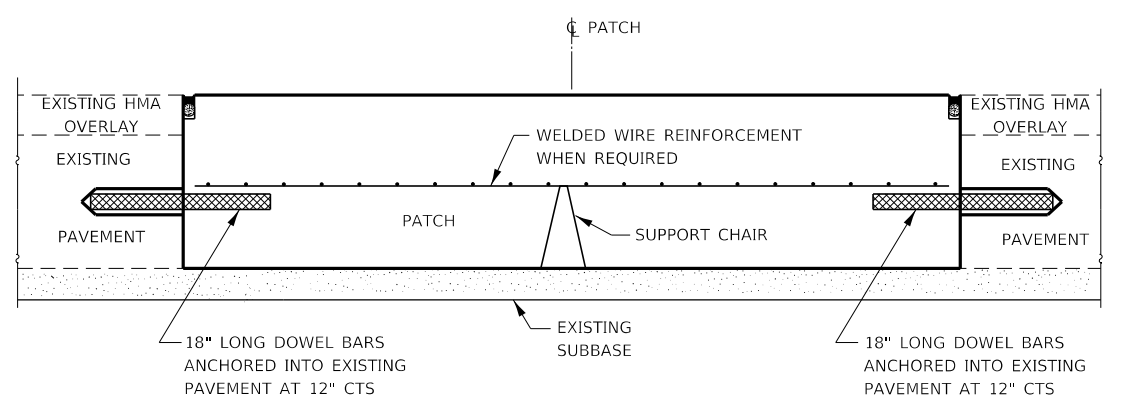
**ALTERNATE SAWING DETAIL**  
(HMA SHOULDER)



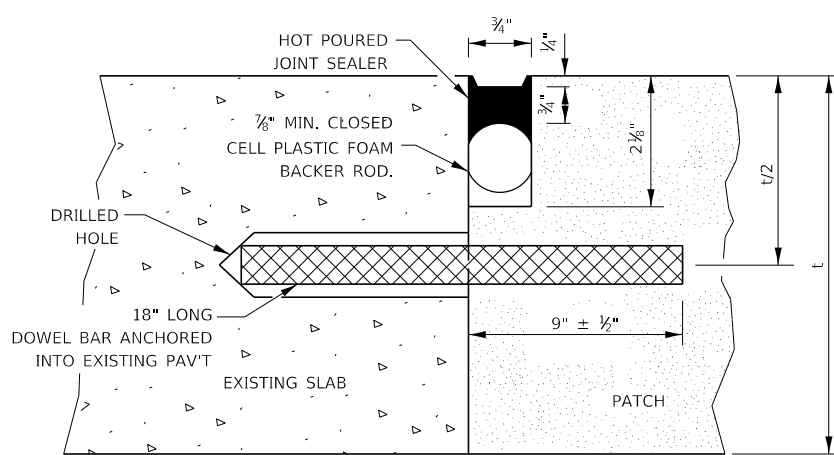
**PAVEMENT SAWING DETAIL**  
(PCC SHOULDER)



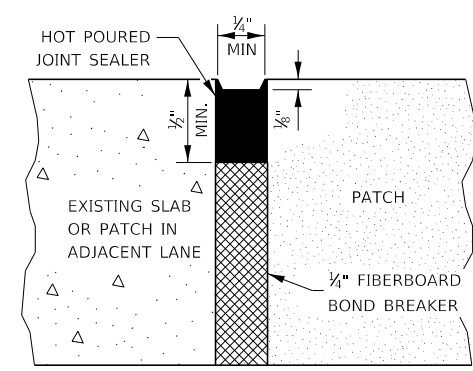
**PATCHING WITHOUT HMA OVERLAY**



**PATCHING WITH HMA OVERLAY**



**TRANSVERSE JOINT**

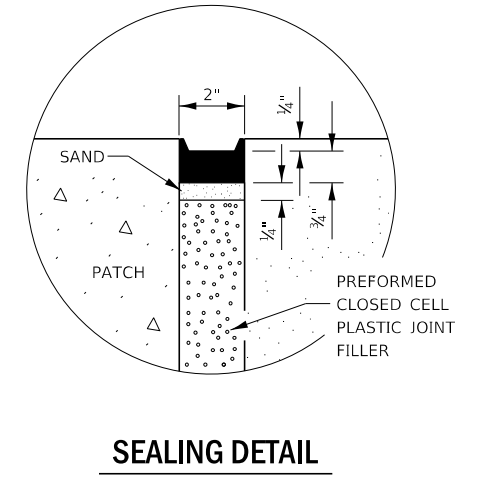
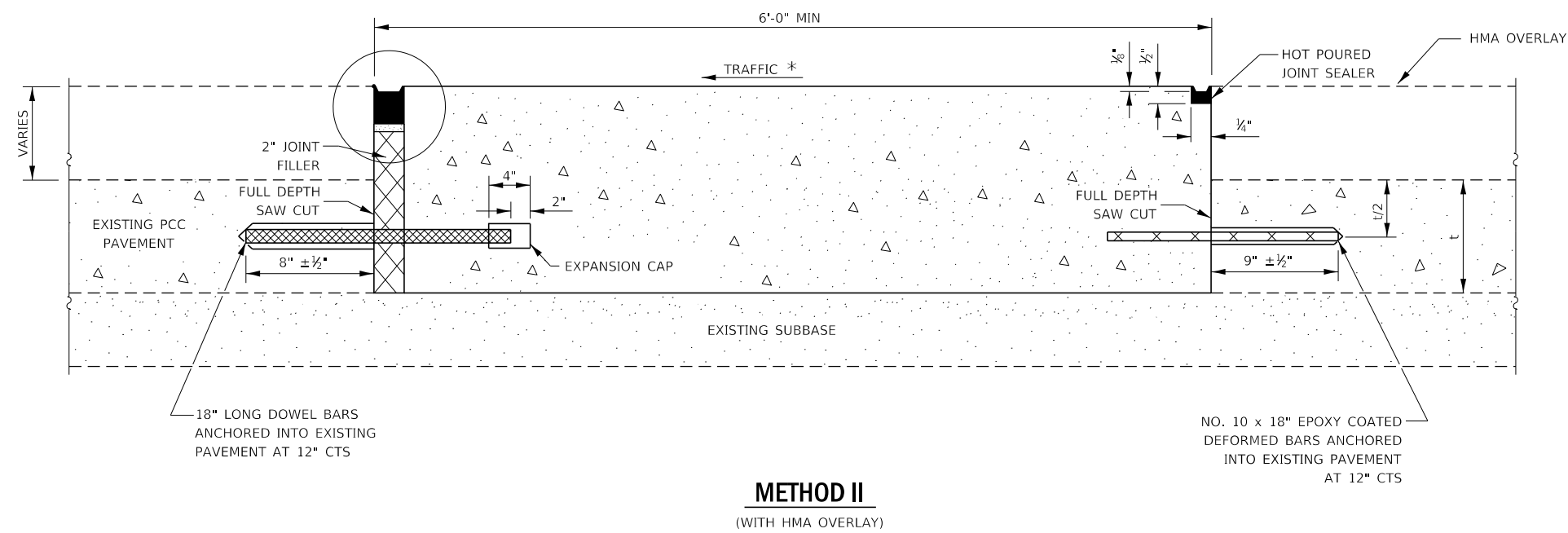
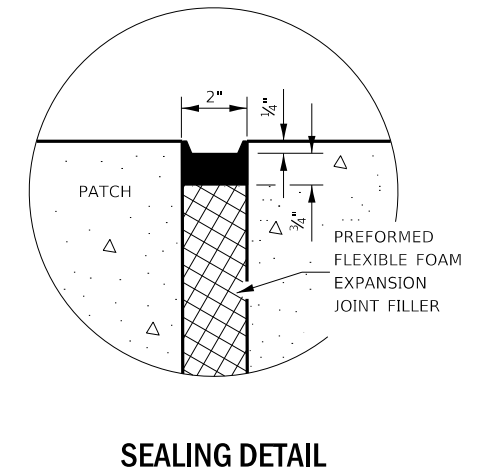
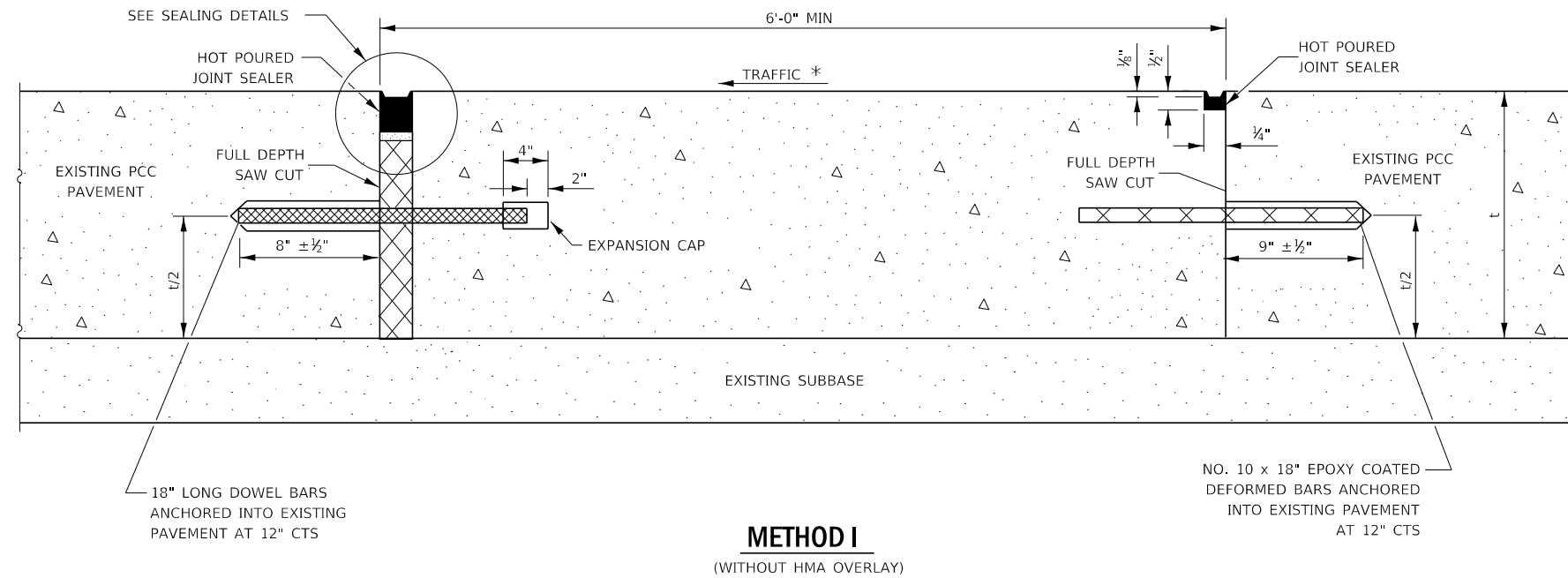


**CENTERLINE JOINT**

DOWEL BAR TABLE		
PAVEMENT THICKNESS	DOWEL BAR DIAMETER	HOLE DIAMETER
8" OR GREATER	1 1/2"	1 3/8"
7" THRU 7.99"	1 1/4"	1 3/16"
LESS THAN 7"	1"	1 3/16"

**GENERAL NOTES**

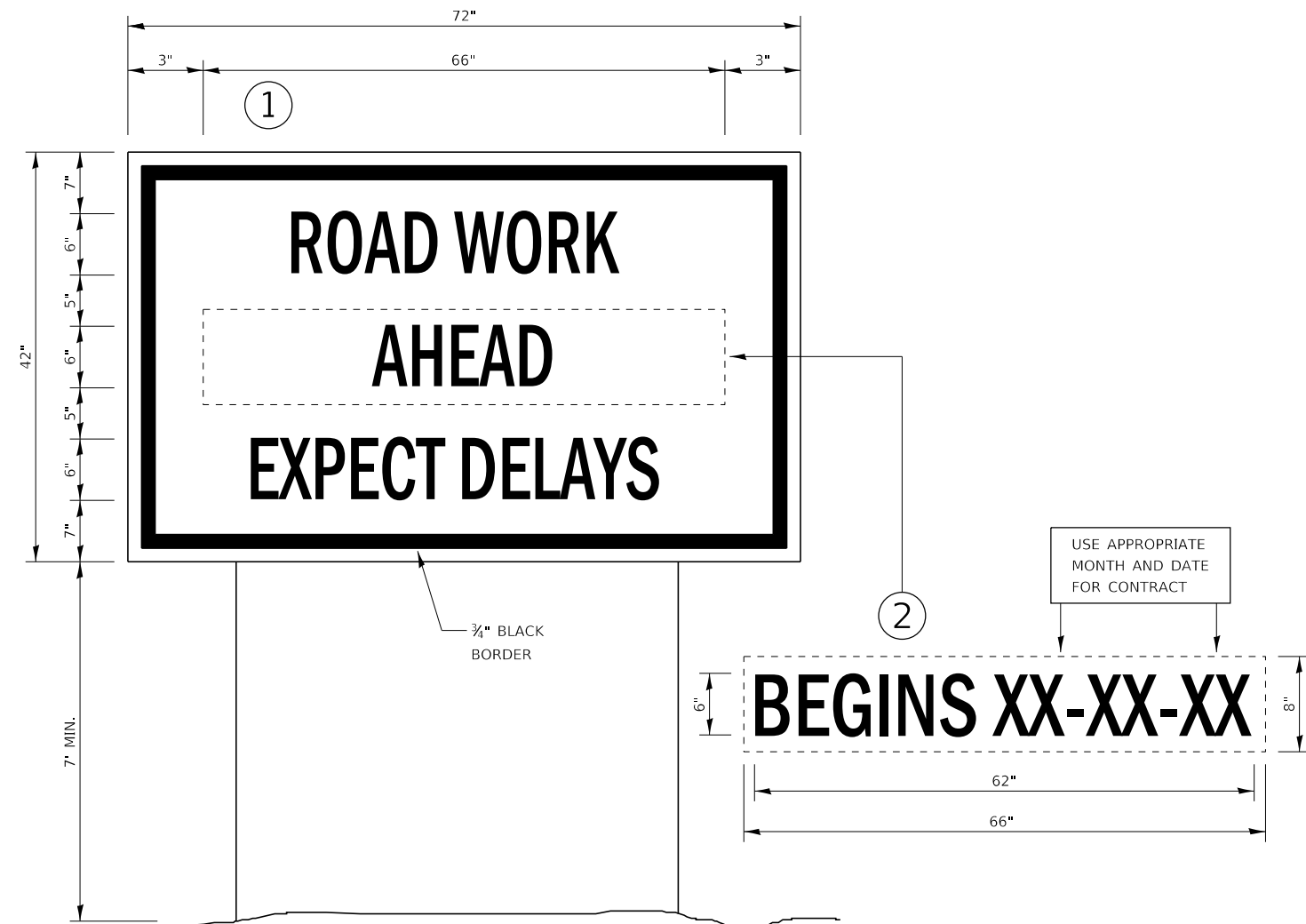
THE TRANSVERSE JOINTS FOR CLASS B PATCHES SHALL ALIGN WITH JOINTS OR CRACKS IN THE ADJACENT LANE WHENEVER POSSIBLE.  
SEE STANDARD 420701 FOR DETAILS OF PAVEMENT WELDED WIRE REINFORCEMENT.



**NOTE**

\* WHEN RE-ESTABLISHING A TRANSVERSE EXPANSION JOINT ON A TWO-WAY ROAD, REVERSE THE ORIENTATION OF THE DOWEL BARS WITH RESPECT TO TRAFFIC FOR ONE OF THE PATCHES SUCH THAT THE JOINT WILL BE CONTINUOUS ACROSS BOTH LANES.

FILE NAME =	USER NAME = woodshank1	DESIGNED - RW	REVISED -	<b>STATE OF ILLINOIS DEPARTMENT OF TRANSPORTATION</b>	<b>CLASS B PATCHING DETAILS</b>			F.A.I. RTE.	SECTION	COUNTY	TOTAL SHEETS	SHEET NO.
pw\01\084EB\INTEG\Illinois.gov\PWIDOT\Documents\DOT Offices\District 3\Projects\0366\J34\CADD\066J34-deta\18.dgn	DRAWN - RW	REVISIONS -	39					(50-1.3)K & PP	LASALLE	16	15	
Default	PLOT SCALE = 100,0000' / in.	CHECKED - EP	REVISIONS -		CONTRACT NO. 66J34			ILLINOIS	FED. AID PROJECT			
	PLOT DATE = 8/20/2018	DATE - 08/17/2018	REVISIONS -		SCALE:	SHEET 2	OF 2	SHEETS	STA.	TO STA.		



### TEMPORARY INFORMATION SIGNING

**NOTES:**

1. TEMPORARY INFORMATION SIGNS SHALL BE LOCATED OR RELOCATED AS DIRECTED BY THE ENGINEER.
2. USE 6" D BLACK LETTERING ON FLUORESCENT ORANGE BACKGROUND.
3. ERECT SIGNS AT LOCATIONS IN ADVANCE OF THE "ROAD CONSTRUCTION AHEAD" SIGNS AS DIRECTED BY THE ENGINEER.
4. ERECT SIGN ① WITH INSTALLED PANEL ② A MINIMUM OF ONE WEEK PRIOR TO THE START OF THE LANE CLOSURE.
5. REMOVE PANEL ② ON THAT DATE.
6. SEE SPECIAL PROVISION "TEMPORARY INFORMATION SIGNING" FOR ADDITIONAL INFORMATION.
7. WILL BE PAID FOR PER SQ FT AS "TEMPORARY INFORMATION SIGNING". EACH SIGN = 21 SQ FT AND THE DATE PANEL ② WILL NOT BE MEASURED SEPARATELY FOR PAYMENT.

FILE NAME =	USER NAME = MARINEJ	DESIGNED - RW	REVISED -	<b>STATE OF ILLINOIS DEPARTMENT OF TRANSPORTATION</b>	<b>TEMPORARY INFORMATION SIGNING</b>			F.A.I. RTE.	SECTION	COUNTY	TOTAL SHEETS	SHEET NO.
pw:\planroom\dott\illinois.gov\PWIDOT\Documents\IDOT	Office\District 3\Projects\0366J34\CADData\66J34-deta	DRAWN - RW	REVISED -					39	(50-1.3)K & PP	LASALLE	16	16
Default	PLOT SCALE = 3.9370' / mm	CHECKED - EP	REVISED -		CONTRACT NO. 66J34			ILLINOIS FED. AID PROJECT				
	PLOT DATE = 2/5/2020	DATE - 08/17/2018	REVISED -		SCALE:	SHEET 1	OF 1	SHEETS	STA.	TO STA.		