



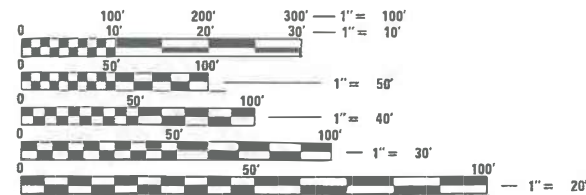
D-94-060-09

INDEX OF SHEETS, SEE SHEET NO. 2
LIST OF STANDARDS, SEE SHEET NO. 2

PROPOSED HIGHWAY PLANS PINECREST STRUCTURE REPLACEMENT

F.A.I. ROUTE 74 (I-74)
SECTION (90-14HB-1)BR1
PROJECT NHPP-WCGE(975)
PINECREST DRIVE ROADWAY IMPROVEMENT
TAZEWELL COUNTY

C-94-086-09



FULL SIZE PLANS HAVE BEEN PREPARED USING STANDARD
ENGINEERING SCALES. REDUCED SIZED PLANS WILL NOT
CONFORM TO STANDARD SCALES. IN MAKING MEASUREMENTS

Roadway	Functional Classification	Design Speed (MPH)	ADT		ADTT	
			Current (as labeled)	Design (2040)	Current (2017)	Design (2040)
Interstate 74 West of Pinecrest	Interstate	75	46300 (2017)	58207	4600	5783
Interstate 74 East of Pinecrest	Interstate		41300 (2017)	51921	5500	6914
Ramp A			1150 (2018)	1431	70	88
Ramp B		30	1200 (2018)	1494	80	101
Ramp C		30	3950 (2018)	4917	160	201
Ramp D		30	4100 (2018)	5103	175	220
Pinecrest	Minor Arterial	45	5100 (2018)	6348	365	459

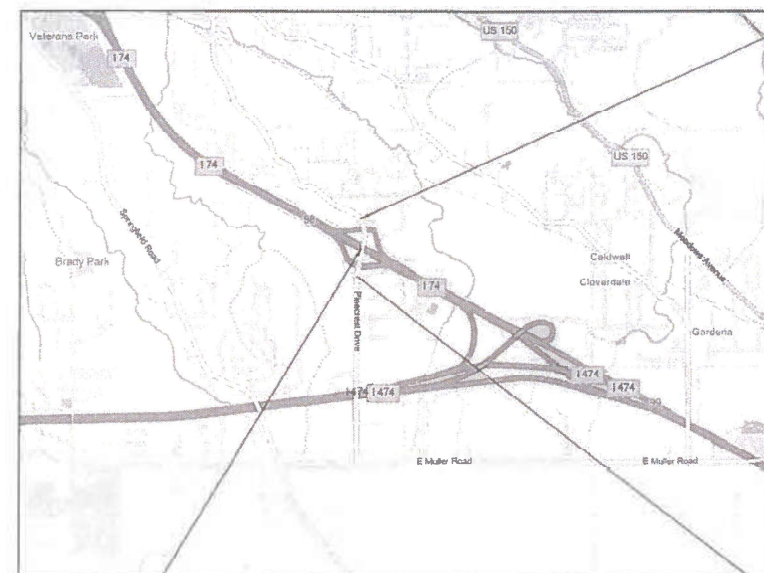
J.U.L.I.E.
JOINT UTILITY LOCATION INFORMATION FOR EXCAVATION
1-800-892-0123
OR 811

PROJECT ENGINEER: RICH DOTSON (309-671-3455)
PROJECT MANAGER: KEVIN HORST (309-671-3472)

CONTRACT NO: 68894
CATALOG NO: 034243-00D

MAURER-STUTZ
ENGINEERS SURVEYORS

3116 N. DRIES LANE, SUITE 100
PEORIA, ILLINOIS 61604
PH. (309) 693-7615
FAX (309) 693-7616
PROFESSIONAL DESIGN FIRM #184-005754



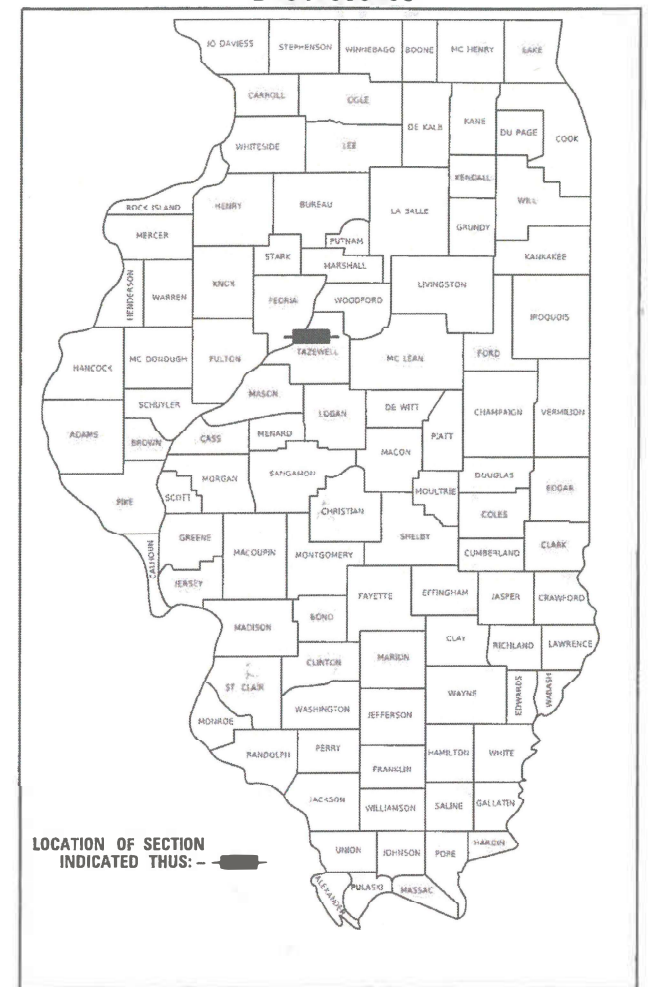
T25N R4W 3RD P.M.

STA. 60 + 09.05 (PINECREST) =
STA. 363 + 40.81 (FAI 74)
SN 090-0091 TO BE REMOVED
AND REPLACED WITH A TWO-
SPAN INTEGRAL ABUTMENT
BRIDGE (SN 090-0181)

IMPROVEMENT ENDS
STA. 67 + 75



IMPROVEMENT BEGINS
STA. 53 + 75



PROPOSED IMPROVEMENT:
THIS PROJECT CONSISTS OF THE RECONSTRUCTION OF
PINECREST DRIVE FROM JUST NORTH OF HIGH POINT
LANE AND CAPITOL DRIVE TO JUST SOUTH OF SABRINA
DRIVE AND HOFFER LANE. CONSTRUCTION CONSISTS
OF BRIDGE REMOVAL AND REPLACEMENT, PAVEMENT
REMOVAL, CONCRETE PAVEMENT, HMA OVERLAY, HMA
SHOULDER RECONSTRUCTION, SHARED-USE PATH, SIGNS,
CURB AND GUTTER, LIGHTING, AND EARTHWORK.



STATE OF ILLINOIS DEPARTMENT OF TRANSPORTATION	
SUBMITTED	Mar 24 2020 Kensil A Barnett RSP REGIONAL ENGINEER
May 8, 2020	J. A. E. K. ENGINEER OF DESIGN AND ENVIRONMENT
May 8, 2020	J. A. E. K. DIRECTOR OF HIGHWAYS PROJECT IMPLEMENTATION
PRINTED BY THE AUTHORITY OF THE STATE OF ILLINOIS	

GROSS LENGTH = 1400 FT. = 0.265 MI.
NET LENGTH = 1400 FT. = 0.265 MI.

MODEL Default
FILE NAME C:\PROGRAMS\WINROADS\DATA\PLNS\Source\03\Pinecrest\Addition of Smart WZ Traffic Control\Index Change CADD Files\0468894-sht-index-sht-stds.dgn

INDEX OF SHEETS

1	COVER
2	INDEX OF SHEETS, HIGHWAY STANDARDS
3	GENERAL NOTES AND PROJECT SPECIFIC NOTES
4-18	SUMMARY OF QUANTITIES
19-29	SCHEDULE OF QUANTITIES
30	STATUS OF UTILITIES
31-41	TYPICAL SECTIONS
42-46	ALIGNMENT, TIES, AND BENCHMARKS
47-51	REMOVAL PLANS
52-62	PLAN & PROFILE SHEETS
63-76	STAGES OF CONSTRUCTION
76A	SMART TRAFFIC MONITORING SYSTEM SET UP DETAIL
76B-76E	DETOUR DETAILS
77-78	SHORT TERM I-74 CLOSURE DETAILS
79-80	EROSION AND SEDIMENT CONTROL DETAILS
81-82	INTERSECTION PAVEMENT ELEVATION DETAILS
83-84	INTERSECTION PAVEMENT JOINT DETAILS
85-89	PAVEMENT MARKING PLANS
90-102	SIGN LOCATION PLAN AND DETAILS
103-116A	LIGHTING AND TEMPORARY TRAFFIC SIGNAL PLANS
117-153	STRUCTURE PLANS
154	BRIDGE APPROACH CONNECT DETAIL
155	RAMP BINDER BUILD UP DETAIL
156	SAND MODULE DETAIL
157-158	ADA CURB RAMP DETAIL
159-171	D4 CADD STANDARDS
205001-D4	SLOPE STEPS DETAIL
406101-04	BUTT JOINT
420401-D4	BRIDGE APPROACH DETAIL
440001-D4	HOT MIX ASPHALT SURFACE REMOVAL (COLD MILLING)
630101-D4	GUARDRAIL EROSION CONTROL TREATMENTS
650002-D4	MEDIAN SAND MODULE IMPACT ATTENUATOR 70 MPH DESIGN - 40' MEDIAN
667101-D4	PERMANENT SURVEY TIE & PERMANENT SURVEY MARKERS TY. I-TY. II
701301-D4	NIGHTTIME LIGHTING INSPECTION
780001-D4	TYPICAL PAVEMENT MARKINGS
172-176	FAI74 CROSS SECTIONS
177-190	PINECREST CROSS SECTIONS
191-198	RAMP A CROSS SECTIONS
199-202	RAMP B CROSS SECTIONS
203-208	RAMP C CROSS SECTIONS
209-212	RAMP D CROSS SECTIONS

HIGHWAY STANDARDS

000001-07	STANDARD SYMBOLS, ABBREVIATIONS AND PATTERNS
001001-02	AREAS OF REINFORCEMENT BARS
001006	DECIMAL OF INCH & FOOT
280001-07	TEMPORARY EROSION CONTROL SYSTEMS
420001-09	PAVEMENT JOINTS
420401-13	PAVEMENT CONNECTOR (PCC) FOR BRIDGE APPROACH SLAB
424001-11	PERPENDICULAR CURB RAMPS
424006-04	DIAGONAL CURB RAMPS
442201-03	CLASS C & D PATCHES
483001-05	PCC SHOULDER
515001-04	NAME PLATE FOR BRIDGES
542001-06	CONCRETE END SECTIONS FOR PIPE CULVERTS 15 IN THRU 84 IN DIAMETER
542311-07	TRAVERSABLE PIPE GRATE FOR CONCRETE END SECTION
542501-02	INLET BOX TYPE 24 (600)A
601101-02	CONCRETE HEADWALL FOR PIPE UNDERDRAINS
602301-04	INLET - TYPE A
602306-03	INLET - TYPE B
604001-05	FRAME AND LIDS TYPE 1
604011-05	FRAME AND GRATE TYPE 3V
606001-07	CONCRETE CURB TYPE B AND COMBINATION CONCRETE CURB AND GUTTER
606006-04	OUTLETS FOR CONCRETE CURB AND GUTTER TYPE B-6.24
606301-04	PC CONCRETE ISLANDS AND MEDIANS
606306-04	CORRUGATED PC CONCRETE MEDIANS
630116	BACKSIDE PROTECTION OF GUARDRAIL
630001-12	STEEL PLATE BEAM GUARDRAIL
630301-09	SHOULDER WIDENING FOR TYPE 1 (SPECIAL) GUARDRAIL TERMINALS
631031-16	TRAFFIC BARRIER TERMINAL, TYPE 6
643001-02	SAND MODULE IMPACT ATTENUATORS
701006-05	OFF-RD OPERATIONS, 2L, 2W, 15' TO 24" FROM PAVEMENT EDGE
701101-05	OFF-RD OPERATIONS, MULTILANE, 15' TO 24" FROM PAVEMENT EDGE
701311-03	LANE CLOSURE 2L2W-MOVING OPERATIONS-DAY ONLY
701400-09	APPROACH TO LANE CLOSURE, FREEWAY/EXPRESSWAY

HIGHWAY STANDARDS CONTINUED

701401-12	LANE CLOSURE, FREEWAT/EXPRESSWAY
701402-12	LANE CLOSURE, FREEWAY/EXPRESSWAY, WITH BARRIER
701406-12	LANE CLOSURE FREEWAY/EXPRESSWAY-DAY OPERATION ONLY
701411-09	LANE CLOSURE, MULTILANE, AT ENTRANCE OR EXIT RAMP, FOR SPEEDS≥45MPH
701426-09	LANE CLOSURE MULTI LANE-INTERMITTENT OR MOVING OP 45 MPH OR MORE
701428-01	TRAFFIC CONTROL SETUP AND REMOVAL FREEWAY/EXPRESSWAY
701451-05	RAMP CLOSURE FREEWAY/EXPRESSWAY
701501-06	URBAN LN CLOSURE 2L2W-UNDIVIDED
701601-09	URBAN LANE CLOSURE, MULTILANE, 1W OR 2W WITH NONTRAVERSABLE MEDIAN
701602-10	URBAN LN CLOSURE MULTI LN 2W WITH BI DIRECT LEFT TURN LN
701701-10	URBAN SINGLE LN CLOSURE MULTI LN INTERSECTION
701901-08	TRAFFIC CONTROL DEVICES
704001-08	TEMPORARY CONCRETE BARRIER
720001-01	SIGN PANEL MOUNTING DETAILS
720006-04	SIGN PANEL ERECTION DETAILS
720021-02	SIGN PANELS EXTRUDED ALUMINUM TYPE
725001-01	OBJECT AND TERMINAL MARKERS
728001-01	TELESCOPING STEEL SIGN SUPPORT
780001-05	TYPICAL PAVEMENT MARKINGS
782001-01	CURB REFLECTORS
782006-01	GUARDRAIL AND BARRIER WALL REFLECTOR MOUNTING DETAILS
805001-01	ELECTRICAL SERVICE INSTALLATION DETAILS
812001	RACEWAYS EMBEDDED IN STRUCTURE
821101-02	LUMINAIRE WIRING IN POLE
825011-04	LIGHTING CONTROLLER PEDESTAL MOUNT 240V
830011-03	LIGHT POLE STEEL MAST ARM
830026-01	TEMPORARY ROADWAY LIGHTING
836001-04	LIGHT POLE FOUNDATION
838001-01	BREAKAWAY DEVICES
878001-10	CONCRETE FOUNDATION DETAILS
880001-01	SPAN WIRE MOUNTED SIGNALS AND FLASHING BEACON INSTALLATION



USER NAME = horstkj	DESIGNED -	REVISED -
	DRAWN -	REVISED -
PLOT SCALE = 2.0000 ' / in	CHECKED -	REVISED -
PLOT DATE = 5/28/2020	DATE -	REVISED -

STATE OF ILLINOIS
DEPARTMENT OF TRANSPORTATION

PINECREST DRIVE OVER I74 STRUCTURE REPLACEMENT
INDEX OF SHEETS, HIGHWAY STANDARDS

SCALE:	SHEET	OF	SHEETS	STA.	TO STA.
--------	-------	----	--------	------	---------

F.A.I. RTE.	SECTION	COUNTY	TOTAL SHEETS	SHEET NO.
74	(90-14HB-1)BR1	TAZEWELL	212	2
		CONTRACT NO. 68894		
		ILLINOIS FED. AID PROJECT		

MODEL Default
FILE NAME: 3023716001.D4 Pinecrest Struct Replace PHUVCADDICADD SheetsD468894-11-500.dgn

CODE NO.	ITEM	UNIT	TOTAL QUANTITY	CONSTRUCTION CODE	
				NHPP FUNDS	
				90% FED / 10% STATE	90% FED / 10% STATE
				BRIDGE	ROADWAY
				0010	0006
				URBAN	URBAN
X0556100	PARTIAL DEPTH PATCHING (SPECIAL)	SQ YD	1786	0	1786
* X1400146	HELIX FOUNDATION AND BREAKAWAY DEVICE	EACH	1	1	0
* X1400222	BLUETOOTH DETECTOR	EACH	1	1	0
X4060995	TEMPORARY RAMP, SPECIAL	SQ YD	84	84	0
X4401198	HOT-MIX ASPHALT SURFACE REMOVAL, VARIABLE DEPTH	SQ YD	190	0	190
X4402805	ISLAND REMOVAL	SQ FT	769	769	0
X4403300	CONCRETE MEDIAN REMOVAL	SQ FT	5359	5359	0
X4421000	PARTIAL DEPTH PATCHING	TON	250	0	250
X6015000	REMOVE CONCRETE HEADWALLS FOR PIPE DRAINS	EACH	4	4	0
X6023508	INLETS, TYPE A, WITH SPECIAL FRAME AND GRATE	EACH	1	1	0
X6024502	INLETS, TYPE B, WITH SPECIAL FRAME AND GRATE	EACH	1	1	0
X6060500	CORRUGATED MEDIAN REMOVAL	SQ FT	830	830	0
X7010216	TRAFFIC CONTROL AND PROTECTION, (SPECIAL)	L SUM	1	1	0
X7040125	PINNING TEMPORARY CONCRETE BARRIER	EACH	168	168	0
X7050167	TEMPORARY TRAFFIC BARRIER TERMINAL, TYPE 1, SPECIAL (TANGENT)	EACH	1	1	0
X7240205	REMOVE SIGN COMPLETE	EACH	7	7	0

*= SPECIALTY ITEM



USER NAME = bnmwagehoft	DESIGNED -	REVISED -
	DRAWN -	REVISED -
PLOT SCALE = 100.0000 ' / in.	CHECKED -	REVISED -
PLOT DATE = 3/18/2020	DATE -	REVISED -

STATE OF ILLINOIS
DEPARTMENT OF TRANSPORTATION

PINECREST DRIVE OVER I74 STRUCTURE REPLACEMENT
SUMMARY OF QUANTITIES

SCALE:	SHEET 13	OF 15 SHEETS	STA.	TO STA.
--------	----------	--------------	------	---------

F.A.I. RTE.	SECTION	COUNTY	TOTAL SHEETS	SHEET NO.
74	(90-14HB-1)BR1	TAZEWELL	212	16
		CONTRACT NO. 68894		
		ILLINOIS	FED. AID PROJECT	

MODEL Default
FILE NAME: 302372016023716001.00 (177-009 D4 Pinecrest Struct. Replace PHVUCADDICADD Sheets)D468894-1H-500.dgn

				CONSTRUCTION CODE	
				NHPP FUNDS	
				90% FED / 10% STATE	90% FED / 10% STATE
CODE NO.	ITEM	UNIT	TOTAL QUANTITY	BRIDGE	ROADWAY
				0010	0006
				URBAN	URBAN
*	X7830060	GROOVING FOR RECESSED PAVEMENT MARKING, LETTERS AND SYMBOLS	SQ FT	421	0
*	X7830070	GROOVING FOR RECESSED PAVEMENT MARKING 5"	FOOT	8186	8327
*	X7830076	GROOVING FOR RECESSED PAVEMENT MARKING 9"	FOOT	2038	221
*	X7830078	GROOVING FOR RECESSED PAVEMENT MARKING 13"	FOOT	490	0
*	X7830090	GROOVING FOR RECESSED PAVEMENT MARKING 25"	FOOT	521	0
*	X8130110	JUNCTION BOX (SPECIAL)	EACH	1	0
	X8570001	SMART TRAFFIC MONITORING SYSTEM	CAL DA	44	0
*	X8710024	FIBER OPTIC CABLE IN CONDUIT, NO. 62.5/125, MM12F SM24F	FOOT	639	0
	X8570003	SMART TRAFFIC MONITORING DEVICE	CAL DA	352	0
*	X8710050	FIBER OPTIC ETHERNET DROP AND REPEAT SWITCH	EACH	1	0
	Z0001002	GUARDRAIL AGGREGATE EROSION CONTROL	TON	44	0
	Z0001495	BRIDGE APPROACH SHOULDER REMOVAL	SQ YD	63	0
	Z0004552	APPROACH SLAB REMOVAL	SQ YD	900	0
	Z0013798	CONSTRUCTION LAYOUT	L SUM	1	0
	Z0023500	FILLING EXISTING CULVERTS	CU YD	6	0
	Z0034105	MATERIAL TRANSFER DEVICE	TON	1047	1047
	Z0038119	PORTLAND CEMENT CONCRETE SURFACE REMOVAL 1 1/2"	SQ YD	196	0
*= SPECIALTY ITEM					

MAURER-STUTZ
ENGINEERS SURVEYORS

USER NAME = bnmwagehoft

DESIGNED -

DRAWN -

PLOT SCALE = 100.0000 ' / in.

PLOT DATE = 3/18/2020

REVISED -

REVISED -

REVISED -

REVISED -

STATE OF ILLINOIS
DEPARTMENT OF TRANSPORTATION

PINECREST DRIVE OVER I74 STRUCTURE REPLACEMENT
SUMMARY OF QUANTITIES

SCALE: SHEET 14 OF 15 SHEETS STA. TO STA.

F.A.I. RTE. 74

SECTION (90-14HB-1)BR1

COUNTY TAZEWELL

TOTAL SHEETS 212

SHEET NO. 17

CONTRACT NO. 68894

ILLINOIS FED. AID PROJECT

1

REV. 05/22/2020

REV. 4/21/20

PORTLAND CEMENT CONCRETE SURFACE REMOVAL 1 1/2"						
LOCATION				SQ YD		REMARKS
PINECREST						
51+48.92	TO	52+25.73	LT	196.4		HIGH POINT LN
TOTAL				196.4		

LOCATION	X4060995 TEMPORARY RAMP, SPECIAL	
	SQ YD	NOTES
RAMP A	50	15' WIDE X 30' LONG
RAMP B	34	15' WIDE X 20' LONG
TOTAL	84	

LOCATION	EARTH EXCAVATION	EXCAVATION ADJUSTED FOR SHRINKAGE (25%)	EMBANKMENT (FILL)	EARTHWORK BALANCE WASTE (+) OR SHORTAGE (-)
	CU YD	CU YD	CU YD	CU YD
BRIDGE SECTION				
PINECREST - STAGE 1	706.79	530.09	2390.91	-1860.82
PINECREST - STAGE 2	638.61	478.96	10698.20	-10219.24
FAI 74	104.91	78.68	57.28	21.41
RAMP A - BRIDGE	54.23	40.67	406.68	-366.01
RAMP B	105.52	79.14	0.11	79.03
RAMP C - BRIDGE	390.90	293.18	6.60	286.58
RAMP D	0.00	0.00	0.00	0.00
ROADWAY SECTION				
RAMP A - ROADWAY	20.27	15.20	30.06	-14.85
RAMP C - ROADWAY	65.12	48.84	32.45	16.39
BRIDGE SECTION SUBTOTAL	2000.96	1500.72	13559.77	-12059.05
ROADWAY SECTION SUBTOTAL	85.39	64.04	62.51	1.53
TOTAL	2086.35	1564.76	13622.28	-12057.52

EARTHWORK SUMMARY					
CODE NO.	ITEM	UNIT	TOTAL	BRIDGE	ROADWAY
20200100	EARTH EXCAVATION	CU YD	2095	2005	90
20400800	FURNISHED EXCAVATION	CU YD	12060	12060	0

PARTIAL DEPTH PATCHING SCHEDULE					
LOCATION	LENGTH	WIDTH		X0556100 PARTIAL DEPTH PATCHING (SPECIAL)	X4421000 PARTIAL DEPTH PATCHING
PINECREST DRIVE AND I-74 INTERCHANGE RAMPS	FT	FT	# OF PATCHES	SQ. YD.	TON
RAMP A					
	4	12	28	149.3	20.9
	6	12	2	16.0	2.2
	8	12	1	10.7	1.5
	4	14	3	18.7	2.6
	6	14	2	18.7	2.6
	20	14	1	31.1	4.4
	4	30	1	13.3	1.9
OUTSIDE EDGE OF PAVEMENT (RT)	1100	2	1	244.4	34.2
INSIDE EDGE OF PAVEMENT (LT)	1350	2	1	300.0	42.0
SUBTOTAL			40	802.2	112.3
RAMP B					
	4	16	7	49.8	7.0
	10	10	1	11.1	1.6
OUTSIDE EDGE OF PAVEMENT (RT)	700	2	1	155.6	21.8
SUBTOTAL			9	216.4	30.3
RAMP C					
	6	6	1	4.0	0.6
	4	10	2	8.9	1.2
	4	16	15	106.7	14.9
	6	16	3	32.0	4.5
TO REPAIR LONGITUDINAL JOINT	550	3	1	183.3	25.7
SUBTOTAL			22	334.9	46.9
RAMP D					
	4	10	1	4.4	0.6
	4	11	1	4.9	0.7
	4	15	17	113.3	15.9
	4	16	8	56.9	8.0
	4	25	2	22.2	3.1
	4	50	1	22.2	3.1
	6	15	1	10.0	1.4
	6	35	1	23.3	3.3
	8	16	1	14.2	2.0
	8	20	1	17.8	2.5
TO REPAIR LONGITUDINAL JOINT	430	3	1	143.3	20.1
SUBTOTAL			35	432.7	60.6
TOTAL			106	1786	250

NOTE: REMOVE EXISTING PAVEMENT TO A DEPTH OF 2.5"

MODEL: D46894 StagingOverview
FILE NAME: O:\PROJECTS\I74\I74-StagingOverview\Change CADD Files\I746894-stg-staging-gen_notes.dgn

PRE-STAGE OVERVIEW

I-74 PRE-STAGE A OVERVIEW

CLOSE ONE LANE IN EACH DIRECTION TO MILL AND RESURFACE THE INSIDE AND OUTSIDE SHOULDERS TO THE LIMITS SHOWN IN THE REMOVAL PLANS. ONE SHOULDER SHALL BE COMPLETELY PAVED BEFORE MILLING THE OTHER SHOULDER IN EACH DIRECTION. THE BOTTOM LIFT OF SHOULDER SHALL BE PLACED THE SAME DAY THE STRETCH OF SHOULDER IS MILLED. REMOVE THE EXISTING PROTECTIVE SHIELD UNDER THE BRIDGE AND INSTALL THE NEW PROTECTIVE SHIELD. USE A TRUCK MOUNTED ATTENUATOR TO PROTECT THE WORKERS INSTALLING THE PROTECTIVE SHIELD UNDER THE BRIDGE. DURING PRE-STAGE A THERE SHALL BE NO LANE CLOSURES OR EQUIPMENT OR WORKERS ON THE SHOULDERS ON I-74 ON WEEKDAYS BETWEEN 6:00AM AND 9:00AM OR BETWEEN 3:00PM AND 7:00PM.

TC&P STANDARDS 701400-09, 701406-12, 701411-09.

I-74 PRE-STAGE B OVERVIEW

ON WESTBOUND I-74:

CLOSE A LANE AND SHIFT THE OPEN LANE AS SHOWN IN THE STAGING PLANS TO INSTALL THE NEW CULVERT IN TWO STAGES. A TRUCK MOUNTED ATTENUATOR SHALL BE USED TO PROTECT WORKERS AND TO PROTECT TRAFFIC FROM THE DROP-OFF AT THE CULVERT INSTALLATION. NO DROP-OFF GREATER THAN THE DEPTH OF THE EXISTING PAVEMENT WILL BE ALLOWED WITHIN THE CLOSED PAVEMENT AREA OVERNIGHT. THE CONTRACTOR SHALL COMPLETE EACH STAGE OF THE PIPE CULVERT REPLACEMENT (INCLUDING PAVEMENT PATCH) AND REOPEN THE LANE TO TRAFFIC IN 3 CALENDAR DAYS OR LESS. THE TRAFFIC CONTROL SETUP AND TAKEDOWN SHALL NOT OCCUR ON WEEKDAYS BETWEEN 6:00 AM AND 9:00 AM OR BETWEEN 3:00 PM AND 7:00 PM.

TC&P STANDARDS 701400-09, 701401-12, 701411-09.

PINECREST DRIVE OVERVIEW

- AT A 4" DEPTH, MILL AND RESURFACE EXISTING SHOULDER ON THE EAST SIDE OF PINECREST.
TC&P STANDARDS 701501-06, 701601-09.

-INSTALL TEMPORARY SIGNALS AT EACH INTERSECTION OF PINECREST DRIVE AND THE RAMP TERMINALS.
TC&P STANDARDS 701006-05.

-REMOVE THE MEDIANS AND TRAFFIC ISLANDS ON PINECREST NEAR THE RAMP TERMINALS AS SHOWN ON REMOVAL PLANS. REPLACE WITH TEMPORARY PAVEMENT TO ALLOW TRAFFIC TO DETOUR ACROSS THE RAMPS IN LATER STAGES. MAINTAIN TWO-WAY TRAFFIC WITH 10-FT MINIMUM LANE WIDTHS AND 1-FT MINIMUM SHOULDER WIDTHS.
TC&P STANDARDS 701701-10, 701501-06.

-REMOVE THE MEDIAN ON PINECREST FROM STA 58+00 TO STA 59+00 AND FROM STA 61+00 TO STA 64+60 AND REPLACE WITH TEMPORARY PAVEMENT. MAINTAIN TWO-WAY TRAFFIC WITH 10-FT MINIMUM LANE WIDTHS AND 1-FT MINIMUM SHOULDER WIDTHS.
TC&P STANDARDS 701701-10.

STAGE I OVERVIEW

-ON PINECREST, SHIFT TRAFFIC TO THE EAST WITH ONE LANE PER DIRECTION AND NO TURN LANE.
MINIMUM LANE WIDTH IS 10', MINIMUM SHOULDER WIDTH IS 1'.

-SHIFT I-74 TRAFFIC TO THE OUTSIDE FOR THE REMAINDER OF STAGE I, MAINTAINING TWO LANES PER DIRECTION. CLOSE THE INSIDE LANES ON I-74 TO INSTALL TEMPORARY CONCRETE BARRIER.

-REMOVE THE WEST SIDE OF THE BRIDGE DECK.

-CLOSE I-74 IN BOTH DIRECTIONS FOR EVENINGS FROM 10:00PM - 5:00AM TO COMPLETE OVERHEAD STRUCTURE REMOVAL. DETOUR TRAFFIC ON THE RAMPS. RESUME PREVIOUS TRAFFIC PATTERNS DURING DAYTIME HOURS.
TC&P STANDARDS 701400-09, 701401-12; SHORT-TERM I-74 CLOSURE DETAILS.

-COMPLETE STAGE I REMOVAL AND REPLACEMENT OF THE MEDIAN PIER AND ABUTMENTS.

-CLOSE I-74 IN BOTH DIRECTIONS FOR EVENINGS FROM 10:00PM - 5:00AM TO COMPLETE STAGE I PLACEMENT OF THE STRUCTURAL STEEL. DETOUR TRAFFIC ON THE RAMPS. RESUME PREVIOUS TRAFFIC PATTERNS DURING DAYTIME HOURS.
TC&P STANDARDS 701400-09, 701401-12; SHORT-TERM I-74 CLOSURE DETAILS.

-ON THE WEST SIDE OF PINECREST, COMPLETE THE NEW ROAD PROFILE IN THE AREA BETWEEN THE APPROACHES AND THE RAMPS' BRIDGE-SIDE RADIUS RETURNS.

-CONSTRUCT THE BRIDGE DECK (WEST SIDE).

-AFTER THE SHORT-TERM I-74 CLOSURES FOR OVERHEAD STRUCTURE REMOVAL AND BEAM SETTING ARE COMPLETE, CLOSE RAMP C AND RAMP D FOR REHABILITATION AND RECONSTRUCTION. DETOUR RAMP C AND RAMP D TRAFFIC. SEE DETOUR DETAILS. CLOSE THE OUTSIDE LANES ON I-74 DURING OPERATIONS AT THE BOTTOMS OF THE RAMPS.
TC&P STANDARD 701451-05, 701400-09, 701406-12

STAGE II OVERVIEW

-ON I-74, MAINTAIN STAGE I TRAFFIC CONTROL UNTIL THE PROPOSED MEDIAN PIER AND IMPACT ATTENUATORS ARE IN PLACE.

-ON PINECREST, SHIFT TRAFFIC TO THE NEWLY COMPLETED WEST SIDE OF THE BRIDGE WITH ONE LANE PER DIRECTION AND NO TURN LANE. REOPEN RAMP C AND RAMP D. MINIMUM LANE WIDTH IS 10', MINIMUM SHOULDER WIDTH IS 1'.

-CLOSE RAMP A AND RAMP B. DETOUR RAMP A AND RAMP B TRAFFIC. SEE DETOUR DETAILS. DO NOT REMOVE ANY RAMP PAVEMENT UNTIL THE SHORT-TERM I-74 CLOSURES FOR OVERHEAD STRUCTURE REMOVAL ARE COMPLETE. INSTALL TEMPORARY RAMP, SPECIAL FOR DETOURING INTERSTATE TRAFFIC ON THE RAMPS DURING THE SHORT-TERM I-74 CLOSURES FOR OVERHEAD STRUCTURE REMOVAL. CLOSE THE OUTSIDE LANES ON I-74 DURING REHABILITATION OPERATIONS AT THE BOTTOMS OF THE RAMPS.
TC&P STANDARD 701451-05, 701400-09, 701406-12

-COMPLETE REMOVAL OF THE BRIDGE DECK, MEDIAN PIER, AND ABUTMENTS.

-CLOSE I-74 IN BOTH DIRECTIONS FOR EVENINGS FROM 10:00PM - 5:00AM TO COMPLETE OVERHEAD STRUCTURE REMOVAL. DETOUR TRAFFIC ON THE RAMPS. RESUME PREVIOUS TRAFFIC PATTERN DURING DAYTIME HOURS.
TC&P STANDARDS 701400-09, 701401-12; SHORT-TERM I-74 CLOSURE DETAILS.

-ON I-74, COMPLETE SUBSTRUCTURE CONSTRUCTION. COMPLETE MEDIAN WORK ON I-74.

-ON I-74, SHIFT LANES OF TRAFFIC TO THE INSIDE AS SHOWN ON THE STAGE 2: I-74 PLAN SHEETS.

-ON PINECREST, REBUILD THE EASTERLY RAMP INTERSECTIONS TO THE NEW PROFILE. WHEN COMPLETE, REOPEN RAMP A AND RAMP B.

-ON I-74, CLOSE OUTSIDE LANES TO REMOVE THE OUTSIDE PIERS.
TC&P STANDARDS 701400-09, 701401-12.

-CLOSE I-74 IN BOTH DIRECTIONS FOR EVENINGS FROM 10:00PM - 5:00AM TO COMPLETE STAGE II PLACEMENT OF THE STRUCTURAL STEEL. DETOUR TRAFFIC ON THE RAMPS. RESUME PREVIOUS TRAFFIC PATTERN DURING DAYTIME HOURS.
TC&P STANDARDS 701400-09, 701401-12; SHORT-TERM I-74 CLOSURE DETAILS.

-CONSTRUCT THE BRIDGE DECK.

-ON PINECREST, REBUILD EAST-SIDE APPROACHES TO THE NEW ROAD PROFILE.

-CONSTRUCT SLOPE WALLS. REOPEN I-74 TO NORMAL TRAFFIC FLOW.

-REPLACE SIGNAGE ON PINECREST. REOPEN PINECREST TO NORMAL TRAFFIC FLOW.
TC&P STANDARDS 701701-10, 701501-06 AND 701601-09

STAGE III OVERVIEW

-REPLACE THE MEDIANS ON PINECREST DR.
TC&P STANDARDS 701701-10, 701501-06, 701601-09.

NOTES:

1. THIS IS A SUGGESTED STAGING PLAN. THE CONTRACTOR SHALL SUBMIT ANY PROPOSED CHANGES TO THIS PLAN TO THE ENGINEER, IN WRITING, FOR CONSIDERATION. NO CHANGES SHALL BE MADE TO THE PROPOSED STAGING WITHOUT WRITTEN APPROVAL FROM THE ENGINEER. THE CONTRACTOR WILL BE RESPONSIBLE FOR ANY ADDITIONAL COSTS ASSOCIATED WITH CHANGES TO STAGING REQUESTED BY THE CONTRACTOR.
2. DURING STAGE I THERE SHALL BE NO LANE CLOSURES OR EQUIPMENT OR WORKERS ON THE SHOULDERS ON I-74 ON WEEKDAYS BETWEEN 6:00AM AND 9:00AM OR BETWEEN 3:00PM AND 7:00PM.
3. DURING STAGE II THERE SHALL BE NO LANE CLOSURES OR EQUIPMENT OR WORKERS ON THE SHOULDERS ON I-74 ON WEEKDAYS BETWEEN 6:00AM AND 9:00AM OR BETWEEN 3:00PM AND 7:00PM.
4. TEMPORARY CONCRETE BARRIER SHALL BE SECURED TO THE PAVEMENT ACCORDING TO SAFETY ENGINEERING POLICY MEMORANDUM 4-15 AND THE STANDARD SPECIFICATIONS.

NOTES (CONT.):

5. ALL TEMPORARY AND PERMANENT SIGNAGE SHALL BE POSITIONED IN ACCORDANCE WITH THE GUIDELINES IN THE MOST RECENT EDITION OF THE MANUAL ON UNIFORM TRAFFIC CONTROL AND DEVICES UNLESS OTHERWISE DIRECTED BY THE ENGINEER.
6. THE RAMP CLOSURES DURING STAGE I SHALL BE LIMITED TO NO MORE THAN 8 WEEKS. THE RAMPS SHALL BE REOPENED WHEN TRAFFIC ON PINECREST IS SWITCHED TO THE STAGE II LAYOUT.
7. THE RAMP CLOSURES DURING STAGE II SHALL BEGIN WHEN TRAFFIC ON PINECREST IS SWITCHED TO THE STAGE II LAYOUT. THE CLOSURES SHALL BE LIMITED TO NO MORE THAN 10 WEEKS. THE RAMPS WILL HAVE TO BE PARTIALLY OPENED DURING THE CLOSURE PERIOD TO ALLOW FOR DETOURING I-74 TRAFFIC DURING THE EVENING CLOSURES FOR OVERHEAD STRUCTURE REMOVAL AND BEAM SETTING. ENOUGH PROPOSED PAVEMENT SHALL BE IN PLACE BEFORE THE SHORT-TERM I-74 CLOSURE FOR BEAM SETTING SO THAT NO TEMPORARY RAMP OR TEMPORARY PAVEMENT WILL BE REQUIRED TO DETOUR INTERSTATE TRAFFIC ON THE RAMPS. THE TEMPORARY CONCRETE BARRIER ON PINECREST AT RAMP A SHALL BE TEMPORARILY RELOCATED, AS NEEDED, DURING THESE DETOURS. SEE TEMPORARY BARRIER NOTES ON STAGE 2: PINECREST PLAN SHEET.

NOTES (CONT.):

8. ON I-74 THE MINIMUM LANE WIDTH IS 11', AND THE MINIMUM SHOULDER WIDTH IS 2'.
9. STRUCTURE WORK SHALL NOT BEGIN BEFORE APRIL 1, 2021, UNLESS OTHERWISE APPROVED BY THE ENGINEER.



USER NAME	= horstkj
DESIGNED	-
DRAWN	-
PLOT SCALE	= 2.0000 ' / in
PLOT DATE	= 5/28/2020

DESIGNED	-
REVIS	-
CHECKED	-
DATE	-

REVISED	-
REVISED	-
REVISED	-
REVISED	-

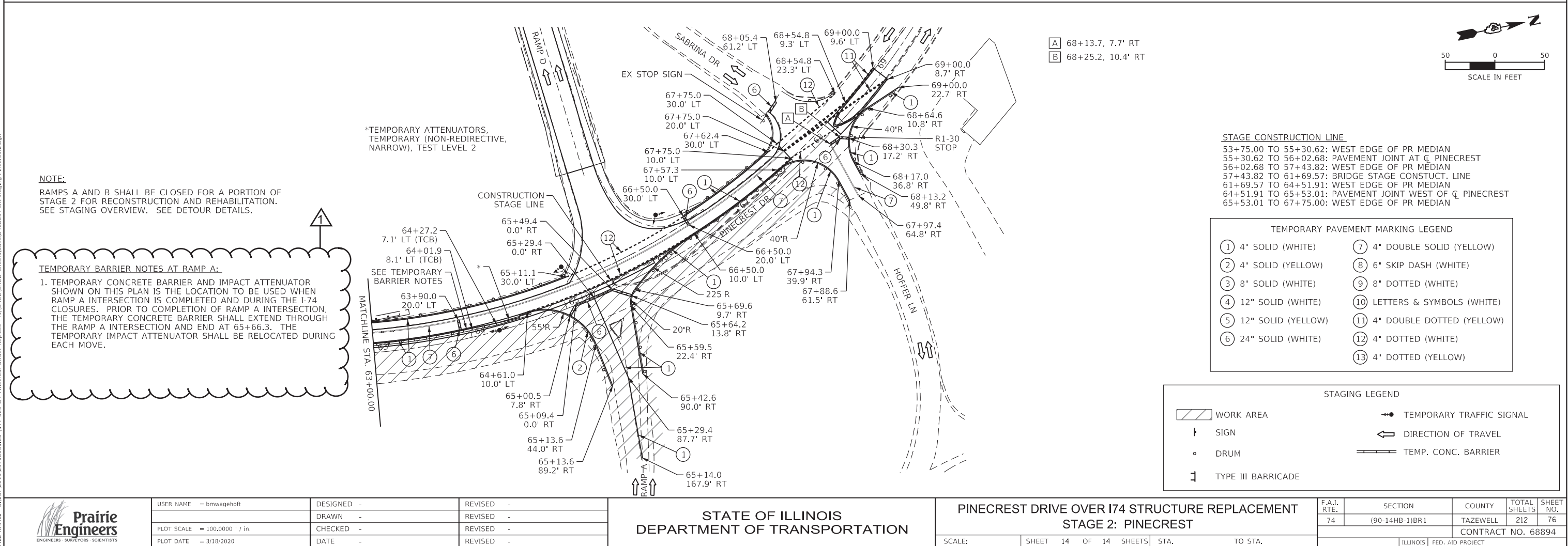
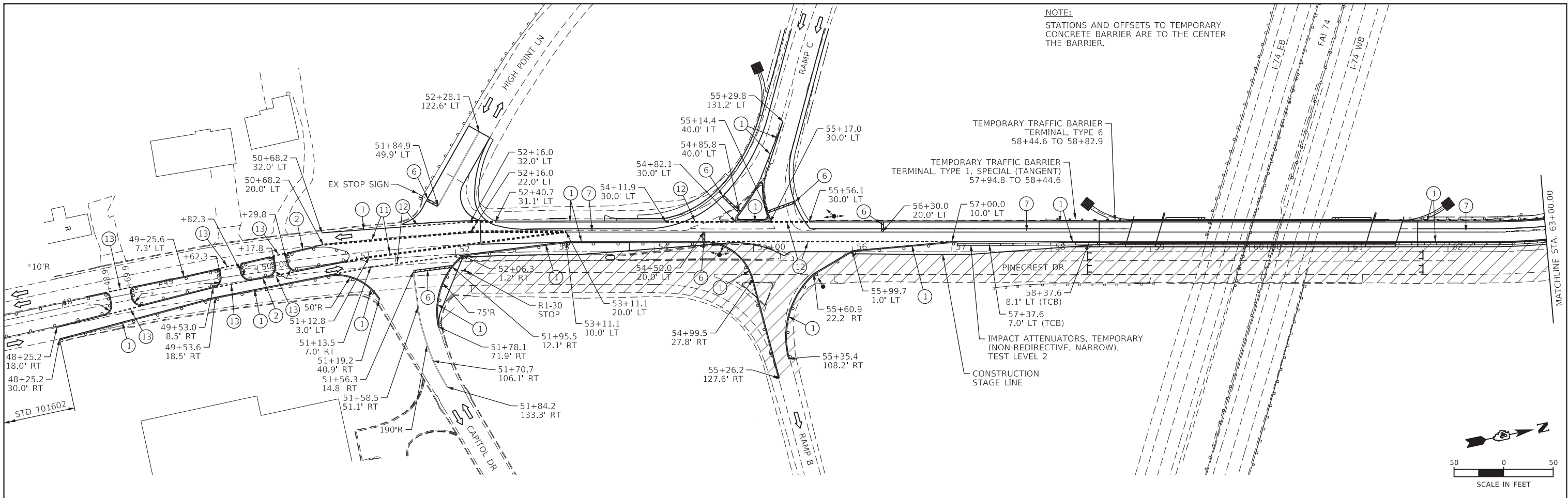
STATE OF ILLINOIS
DEPARTMENT OF TRANSPORTATION

PINECREST DRIVE OVER I74 STRUCTURE REPLACEMENT
(STAGING OVERVIEW AND WORKING RESTRICTIONS)

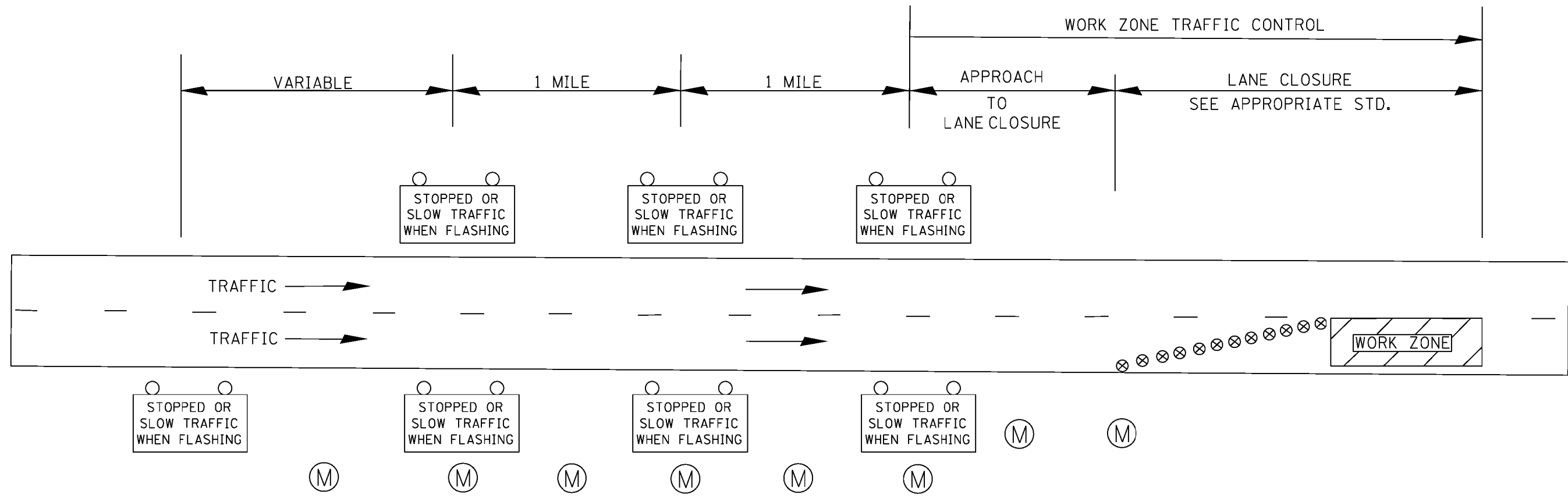
SCALE: SHEET 1 OF 14 SHEETS STA. TO STA.

F.A.I. RTE.	SECTION	COUNTY	TOTAL SHEETS	SHEET NO.
74	(90-14HB-1)BR1	TAZEWELL	212	63
		CONTRACT NO. 68894		
		ILLINOIS FED. AID PROJECT		

MODEL: D468994 Pincrest Stage 2
FILE NAME: S:\23730\B\23716001\100\1177009 D4 Pincrest Struct Replace PHIVCADD\CADD Sheets\SUBS\staging-Pincrest2.dgn



SMART TRAFFIC MONITORING SYSTEM
(TYPICAL EXAMPLE)

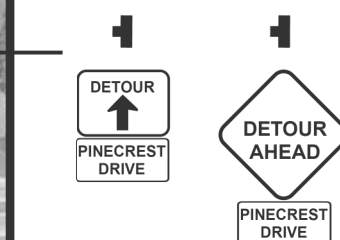


NOTES:

- ① ACTUAL LOCATION OF SMART MONITORING DEVICES SHALL BE BASED ON MANUFACTURER'S SPECIFICATIONS AND RECOMMENDATIONS ALONG WITH THE SPECIAL PROVISIONS AND AS DIRECTED BY THE ENGINEER.
- ② MODIFICATIONS TO LAYOUT MAY BE NECESSARY TO ACCOMODATE SPECIFIC CLOSURES. ALL CHANGES WILL BE APPROVED BY THE ENGINEER.

LEGEND


- STOPPED OR SLOW TRAFFIC WHEN FLASHING
STATIC WARNING SIGN WITH FLASHERS
48"X96" WARNING SIGN STATING:
"STOPPED OR SLOW TRAFFIC WHEN FLASHING"
- SMART TRAFFIC MONITORING
DEVICE (APPROX. HALF MILE SPACING)
- DRUM/BARRICADES
PER APPROPRIATE STANDARD



**STANDARD 701451-EXIT RAMP CLOSURE-
SHALL BE USED IN CONJUNCTION WITH THE
DETAILS AS SHOWN ON THIS PLAN SHEET.**

**-SIGN INFORMATION-
ALL STAGES
OF DETOUR**

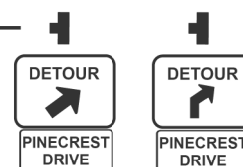
30 x 18- 5" LETTERS -BLACK ON ORANGE

 * **SIZE- 34 X 24 BLACK ON ORANGE**

EAST * 24 X 12 WHITE ON BLUE

 24 X 24 STANDARD DESIGN

* REFERS TO ALL SIGNS SIMILIAR



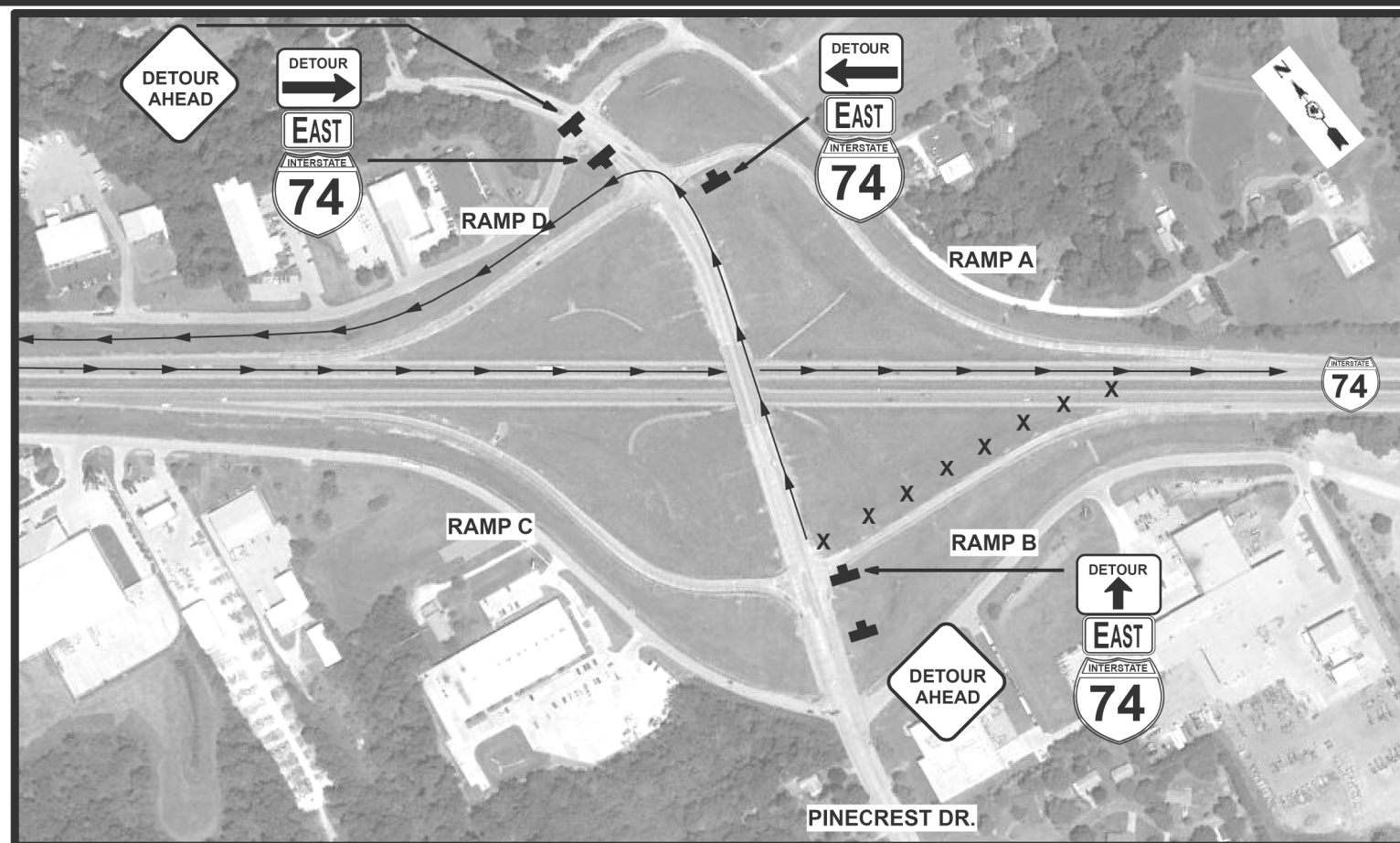
USER NAME = horstkj	DESIGNED -	REVISED -
	DRAWN -	REVISED -
PLOT SCALE = 2.0000 ' / in	CHECKED -	REVISED -
PLOT DATE = 5/28/2020	DATE -	REVISED -

**STATE OF ILLINOIS
DEPARTMENT OF TRANSPORTATION**

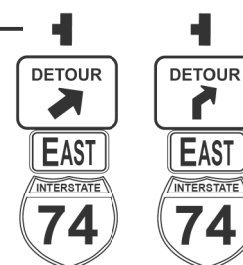
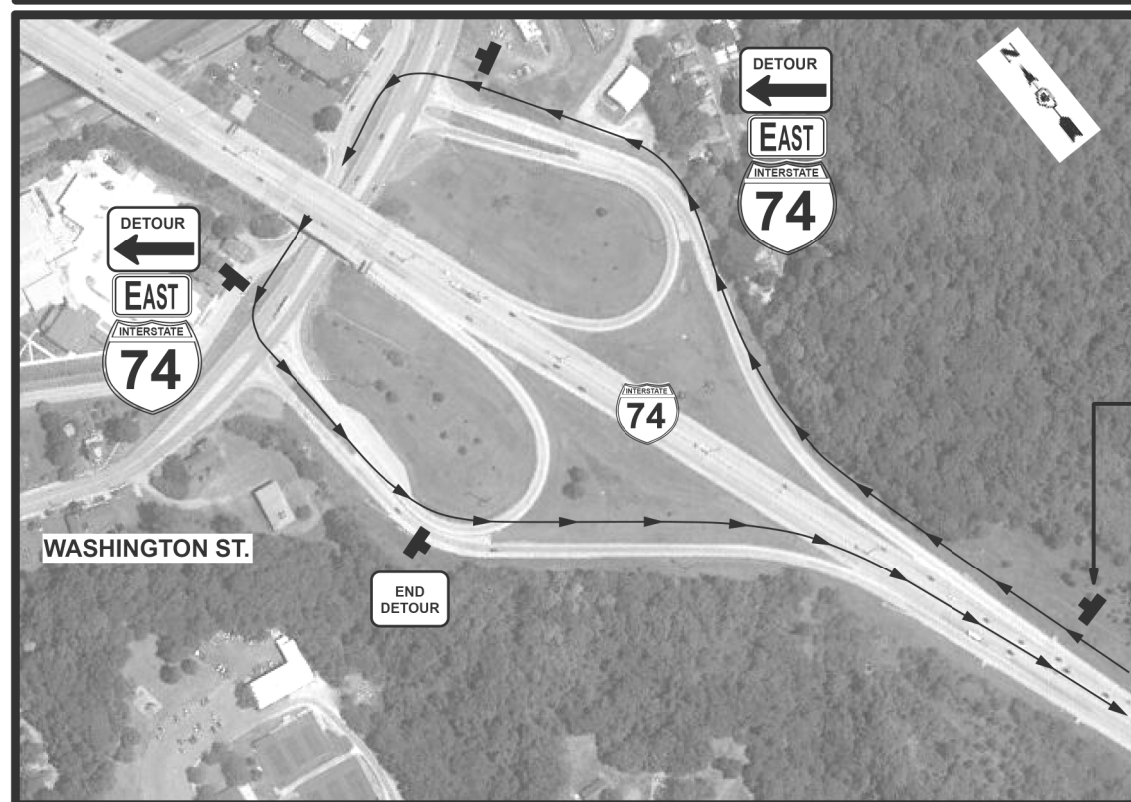
DETOUR DETAILS

SCALE:	SHEET	OF	SHEETS	STA.	TO STA.
--------	-------	----	--------	------	---------

F.A.I. RTE.	SECTION	COUNTY	TOTAL SHEETS	SHEET NO.
74	(90-14HB-1)BR1	TAZEWELL	212	766
		CONTRACT NO. 68894		
		ILLINOIS FED. AID PROJECT		



PINECREST RAMP B DETOUR

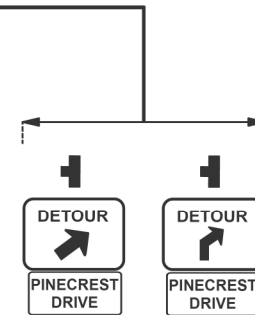


USER NAME = horstkj	DESIGNED -	REVISED -
	DRAWN -	REVISED -
PLOT SCALE = 2.0000 ' / in	CHECKED -	REVISED -
PLOT DATE = 5/28/2020	DATE -	REVISED -

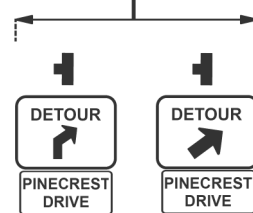
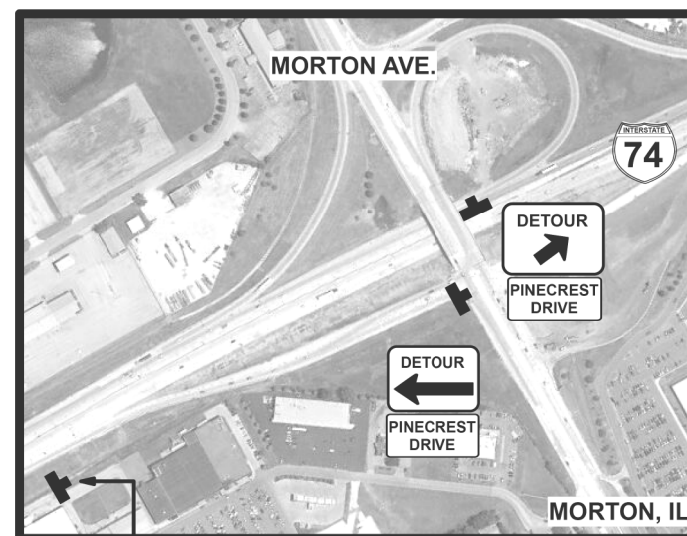
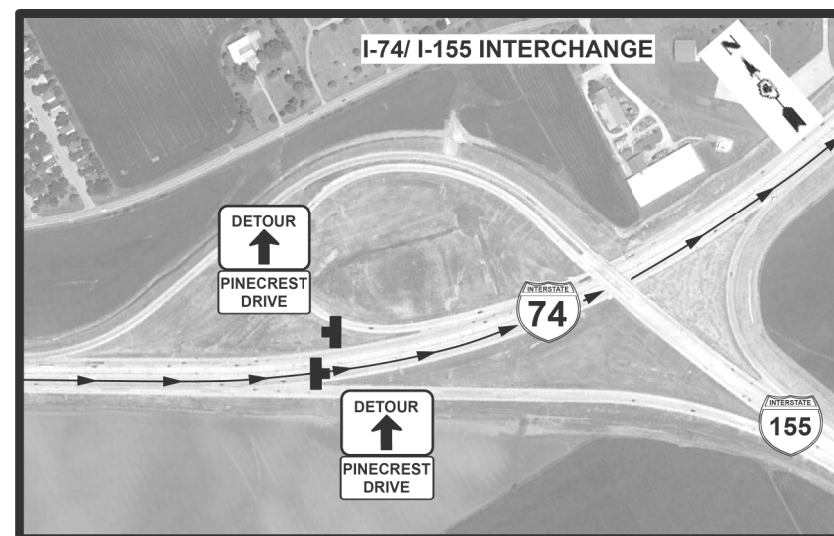
DETOUR DETAILS

SCALE:	SHEET	OF	SHEETS	STA.	TO STA.
--------	-------	----	--------	------	---------

F.A.I. RTE.	SECTION	COUNTY	TOTAL SHEETS	SHEET NO.
74	(90-14HB-1)BR1	TAZEWELL	212	760
		CONTRACT NO. 68894		
ILLINOIS		FED. AID PROJECT		

[illegible]

**STANDARD 701451-EXIT RAMP CLOSURE-
SHALL BE USED IN CONJUNCTION WITH THE
DETAILS AS SHOWN ON THIS PLAN SHEET.**



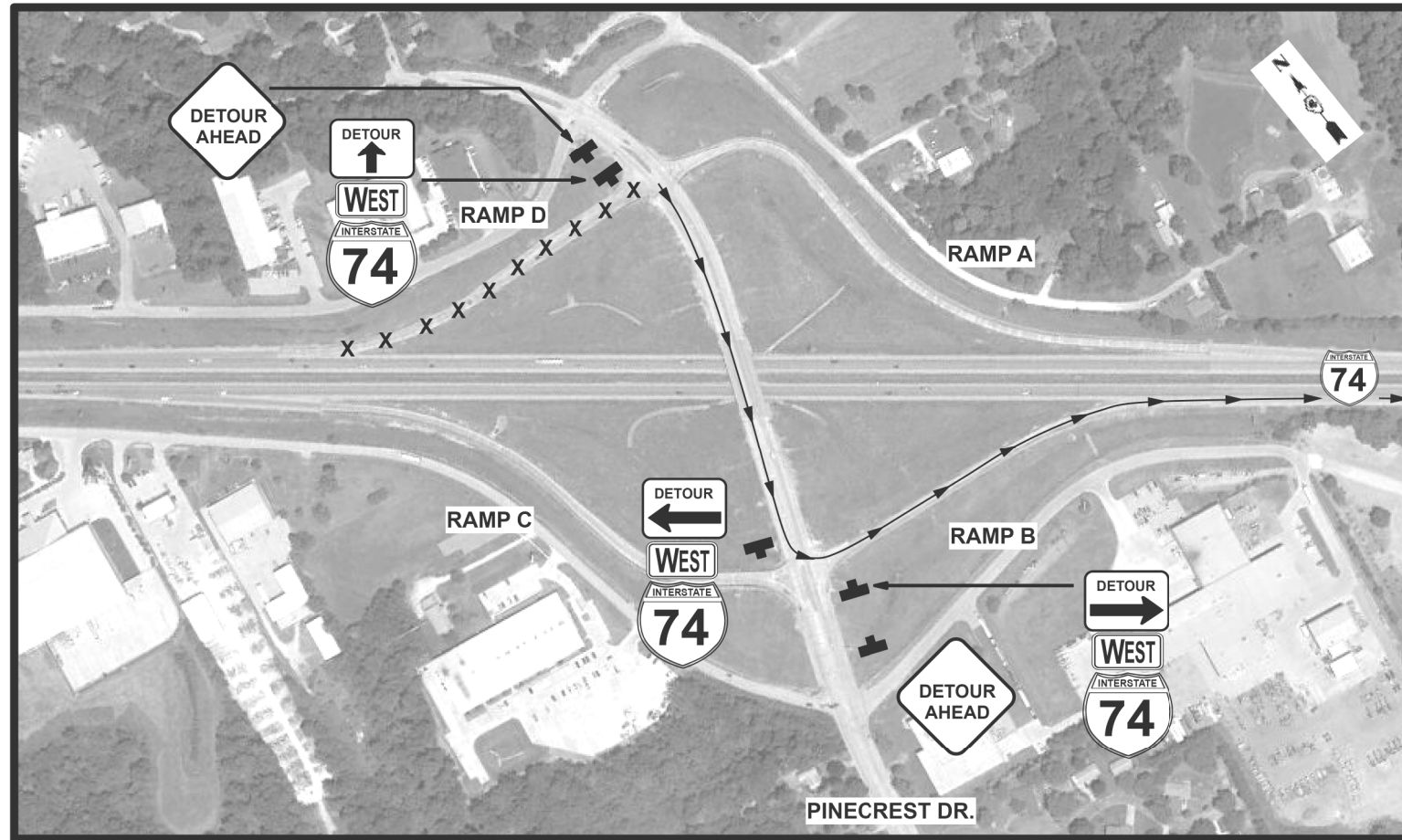
USER NAME = horstkj	DESIGNED -	REVISED -
	DRAWN -	REVISED -
PLOT SCALE = 2.0000 ' / in	CHECKED -	REVISED -
PLOT DATE = 5/28/2020	DATE -	REVISED -

STATE OF ILLINOIS
DEPARTMENT OF TRANSPORTATION

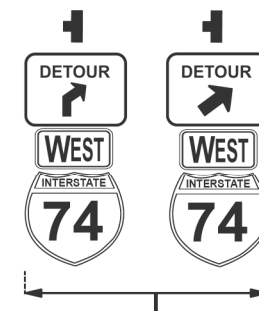
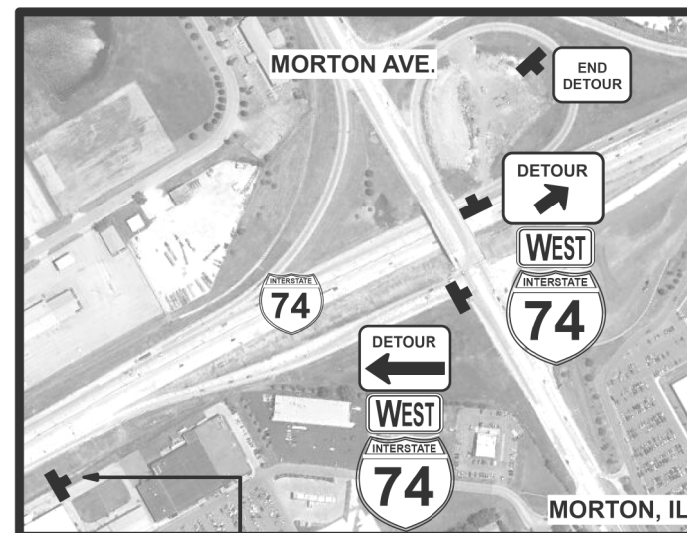
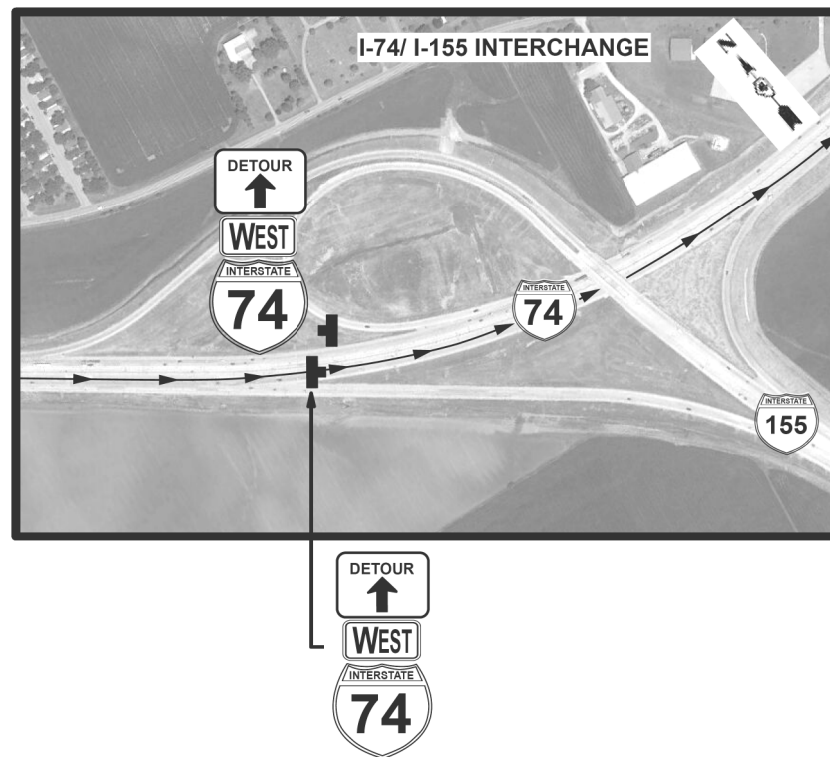
DETOUR DETAILS				
SCALE:	SHEET	OF	SHEETS	STA. TO STA.

F.A.I. RTE.	SECTION	COUNTY	TOTAL SHEETS	SHEET NO.
74	(90-14HB-1)BR1	TAZEWELL	212	76D
		CONTRACT NO. 68894		
		ILLINOIS	FED. AID PROJECT	

PINECREST RAMP D DETOUR



**STANDARD 701451-ENTRANCE RAMP CLOSURE-
SHALL BE USED IN CONJUNCTION WITH THE
DETAILS AS SHOWN ON THIS PLAN SHEET.**



USER NAME = horstkj	DESIGNED -	REVISED -
	DRAWN -	REVISED -
PLOT SCALE = 2.0000 ' / in	CHECKED -	REVISED -
PLOT DATE = 5/28/2020	DATE -	REVISED -

STATE OF ILLINOIS
DEPARTMENT OF TRANSPORTATION

DETOUR DETAILS

SCALE:	SHEET	OF	SHEETS	STA.	TO STA.
--------	-------	----	--------	------	---------

F.A.I. RTE.	SECTION	COUNTY	TOTAL SHEETS	SHEET NO.
74	(90-14HB-1)BR1	TAZEWELL	212	76E
		CONTRACT NO. 68894		
		ILLINOIS	FED. AID PROJECT	