

STATE OF ILLINOIS
DEPARTMENT OF TRANSPORTATION

F.A.P. RTE.	SECTION	COUNTY	TOTAL SHEETS	SHEET NO.
534	(111BR)BRR	HENDERSON	* 11	1
ILLINOIS			CONTRACT NO. 68F60	

* 11 = 1 = 12 TOTAL SHEETS

D-94-050-20

INDEX OF SHEETS

1. COVER SHEET
2. INDEX OF SHEETS, GENERAL NOTES, & STATUS OF UTILITIES
3. SUMMARY OF QUANTITIES
4. SCHEDULE OF QUANTITIES
5. LINE DIAGRAM
- 6-9. EXISTING STRUCTURE
10. GENERAL PLAN & ELEVATION
- 11-11A REPAIR DETAILS

PROPOSED
HIGHWAY PLANS

F.A.P. ROUTE 534 (IL 94)
SECTION (111BR)BRR
PROJECT
CONTRACT MAINTENANCE
HENDERSON COUNTY

C-94-080-20



LOCATION OF SECTION INDICATED THIS: - [black rectangle]

DESCRIPTION OF WORK

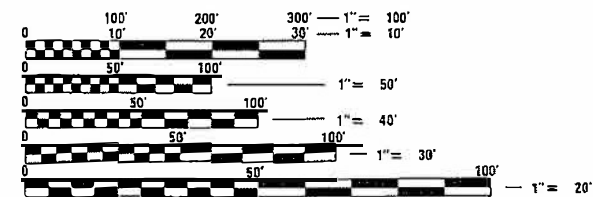
This spot improvement is located 1.5 miles south of Stronghurst, on the north abutment of S.N. 036-0010. Improvements consist of north abutment repairs with structural facade.

HIGHWAY STANDARDS

- 280001-07
- 701316-13
- 701901-08

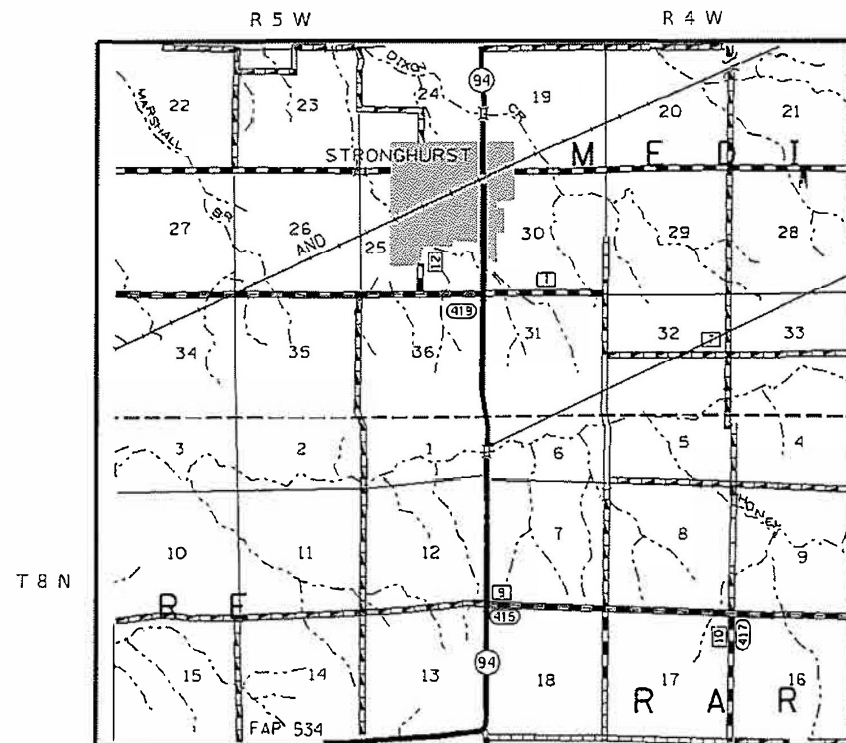
IL 94 DESIGN DESIGNATION

MINOR ARTERIAL
ADT = 1300 (2019)
MU = 10%
SU = 5.38%



FULL SIZE PLANS HAVE BEEN PREPARED USING STANDARD ENGINEERING SCALES. REDUCED SIZED PLANS WILL NOT CONFORM TO STANDARD SCALES. IN MAKING MEASUREMENTS ON REDUCED PLANS, THE ABOVE SCALES MAY BE USED.

J.U.L.I.E.
JOINT UTILITY LOCATION INFORMATION FOR EXCAVATORS
1-800-892-0123
OR 811



S.N. 036-0010
SPOT IMPROVEMENT
STA. 491+48.63

PROJECT ENGINEER RICH DOTSON (309-671-3455)
PROJECT MANAGER RON NOLTE (309-671-3470)

GROSS LENGTH = 0.00 FT. = 0.00 MILE
NET LENGTH = 0.00 FT. = 0.00 MILE

CONTRACT NO. 68F60

STATE OF ILLINOIS
DEPARTMENT OF TRANSPORTATION

SUBMITTED Mar 27 2020
Kensel A. Barnett KSD
REGIONAL ENGINEER

May 8, 2020 [Signature]
ENGINEER OF DESIGN AND ENVIRONMENT

May 8, 2020 [Signature]
DIRECTOR OF HIGHWAYS PROJECT IMPLEMENTATION

PRINTED BY THE AUTHORITY
OF THE STATE OF ILLINOIS

GENERAL NOTES

701.01 ADDITIONAL SUPPLEMENTAL TRAFFIC CONTROL

The Department reserves the right at any time to add additional Traffic Control Systems or devices within the active contract limits, by means of an additional contract. All terms of Article 105.08 of the Standard Specifications shall be followed by each Contractor.

JOB SPECIFIC DETAILS NOTES

CONTRACTOR WILL BE RESPONSIBLE FOR THE CONTAINMENT OF DEBRIS.
METHOD MUST BE APPROVED BY THE RESIDENT ENGINEER.

STATUS OF UTILITIES

NO UTILITY CONFLICTS ARE LOCATED WITHIN PROJECT LIMIT.

MODEL: Default
FILE NAME: \\w:\planroom\dot\illinois.gov\PI\DOT\Documents\DOT_Offices\District 6\al68f60\Plan_Details.dgn

USER NAME = elderzst	DESIGNED -	REVISED -
	DRAWN -	REVISED -
PLOT SCALE = 100,1627' / In.	CHECKED -	REVISED -
PLOT DATE = 3/24/2020	DATE -	REVISED -

**STATE OF ILLINOIS
DEPARTMENT OF TRANSPORTATION**

GENERAL NOTES & STATUS OF UTILITIES

SCALE: SHEET OF SHEETS STA. TO STA.

F.A.P. RTE.	SECTION	COUNTY	TOTAL SHEETS	SHEET NO.
534	(111BR)BRR	HENDERSON	11	2
CONTRACT NO. 68F60				
ILLINOIS FED. AID PROJECT				

CODE NO.	ITEM	UNIT	TOTAL QUANTITY	CONST. CODE
				0047
				BRIDGE
				PRESERVATION 100% STATE 036-0010
28000400	PERIMETER EROSION BARRIER	FOOT	54	54
50300225	CONCRETE STRUCTURES	CU YD	2	2
50800205	REINFORCEMENT BARS, EPOXY COATED	POUND	390	390
50800515	BAR SPLICERS	EACH	4	4
67100100	MOBILIZATION	L SUM	1	1
70100100	TRAFFIC CONTROL AND PROTECTION, STANDARD 701316	EACH	1	1
70106700	TEMPORARY RUMBLE STRIP	EACH	6	6
70107006	PAVEMENT MARKING BLACKOUT TAPE, 6"	FOOT	91	91
70107025	CHANGEABLE MESSAGE SIGN	CAL DA	30	30
70300100	SHORT-TERM PAVEMENT MARKING	FOOT	1057	1057
70300150	SHORT TERM PAVEMENT MARKING REMOVAL	SQ FT	331	331
89000100	TEMPORARY TRAFFIC SIGNAL INSTALLATION	EACH	1	1
Z0012754	STRUCTURAL REPAIR OF CONCRETE (DEPTH EQUAL TO OR LESS THAN 5 INCHES)	SQ FT	36	36
Z0073200	TEMPORARY SHORING AND CRIBBING	EACH	6	6

MODEL Default
FILE NAME: pm1\plan\com\d011\m01\gov\p\DDOT Documents\DDOT Offices\District 4\Projects\Squad 6_e\68F60\Plan_Details.dgn

USER NAME = e\derzis1	DESIGNED -	REVISED -
	DRAWN -	REVISED -
PLOT SCALE = 100.1627' / 1 in.	CHECKED -	REVISED -
PLOT DATE = 3/24/2020	DATE -	REVISED -

**STATE OF ILLINOIS
DEPARTMENT OF TRANSPORTATION**

SUMMARY OF QUANTITIES

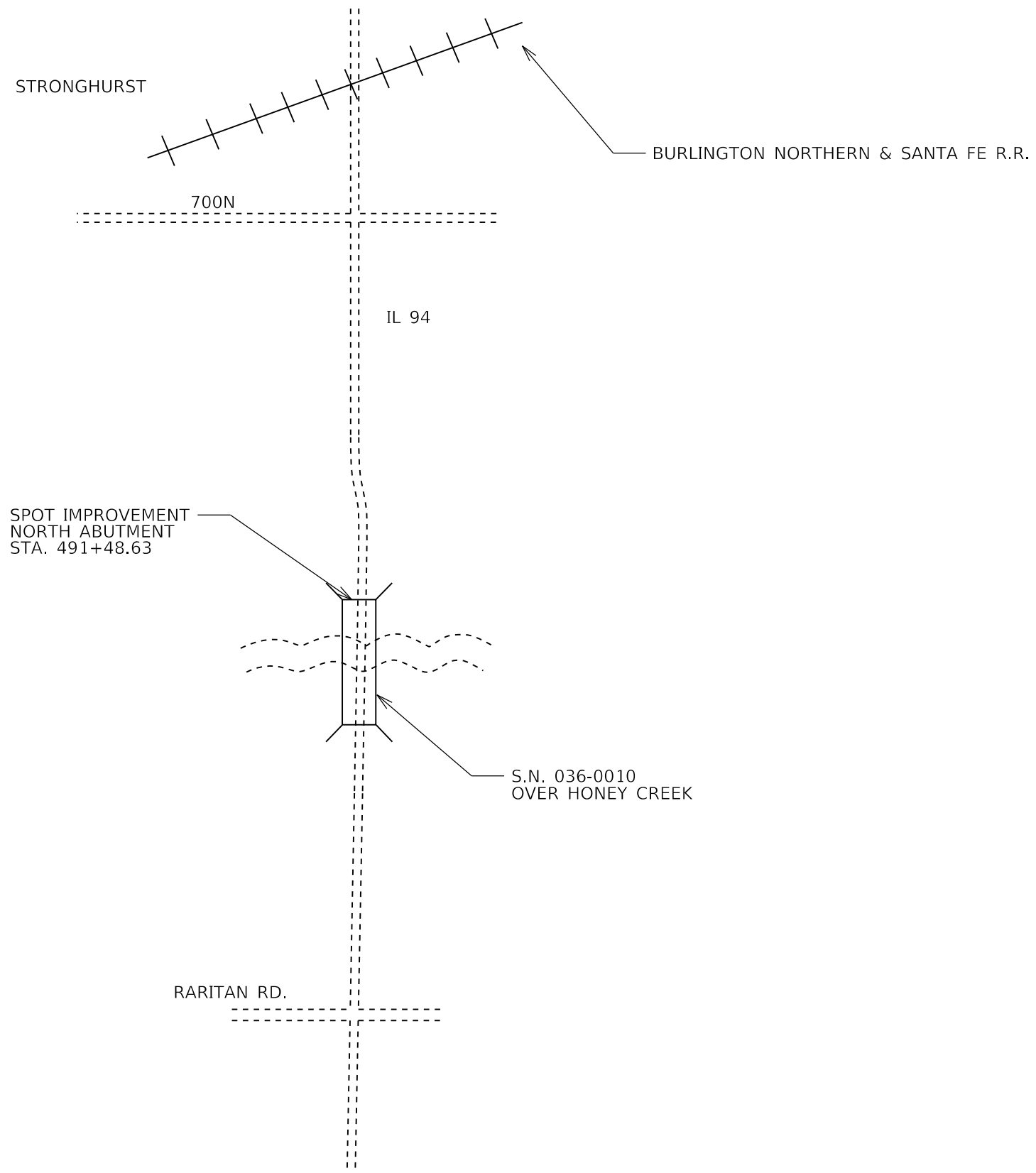
F.A.P. RTE.	SECTION	COUNTY	TOTAL SHEETS	SHEET NO.
534	(111BR)BRR	HENDERSON	11	3
CONTRACT NO. 68F60				
ILLINOIS FED. AID PROJECT				

LOCATION	67100100	70100100	70106700	89000100
	MOBILIZATION	TRAFFIC CONTROL AND PROTECTION, STANDARD 701316	TEMPORARY RUMBLE STRIPS	TEMPORARY TRAFFIC SIGNAL INSTALLATION
	L SUM	EACH	EACH	EACH
JOBSITE	1.0	1.0	6.0	1.0

LOCATION	70300100		70300150	70107006
	SHORT TERM PAVT MARKING		SHORT TERM PAVEMENT MARKING REMOVAL	PAVEMENT MARKING BLACKOUT TAPE, 6"
	LENGTH	LENGTH		
	4"WHITE FOOT	24" FOOT	SQ FT	FOOT
STAGE I				
STA.	489+09.63	TO	489+19.63	
				15.4
STA.	489+19.63	TO	491+23.63	204.0
STA.	491+23.63	TO	491+48.63	25.0
STA.	491+48.63	TO	492+31.97	83.3
STA.	492+31.97	TO	492+56.97	25.0
STA.	492+56.97	TO	493+16.97	60.0
STA.	493+16.97	TO	494+16.97	100.0
STA.	494+16.97	TO	494+76.97	15.4
STAGE II				
STA.	489+09.63	TO	489+19.63	
				15.4
STA.	489+19.63	TO	491+23.63	204.0
STA.	491+23.63	TO	491+48.63	25.0
STA.	491+48.63	TO	492+31.97	83.3
STA.	492+31.97	TO	492+56.97	25.0
STA.	492+56.97	TO	493+16.97	60.0
STA.	493+16.97	TO	494+16.97	100.0
STA.	494+16.97	TO	494+76.97	15.4
TOTAL				995
				62
				331
				91

LOCATION	28000400	
	PERIMETER EROSION BARRIER	
	FOOT	
NORTH ABUTMENT		
STA.	491+48.63	54.0
TOTAL		54

LOCATION	70107025	70106700
	CHANGEABLE MESSAGE SIGNS	TEMPORARY RUMBLE STRIPS
LOCATION	CAL DA	EACH
NB IL 94	15	3
SB IL 94	15	3
TOTAL	30	6



DRAWING NOT TO SCALE

MODEL: Default
FILE NAME: c:\p1\planning\dot\illinois\dot\Projects\DOT - Offices\District - al\Projects\Squad 6_0\68F60\Plan_Details.dgn

USER NAME = elderezist	DESIGNED -	REVISED -
	DRAWN -	REVISED -
PLOT SCALE = 100.1627' / in.	CHECKED -	REVISED -
PLOT DATE = 3/24/2020	DATE -	REVISED -

**STATE OF ILLINOIS
DEPARTMENT OF TRANSPORTATION**

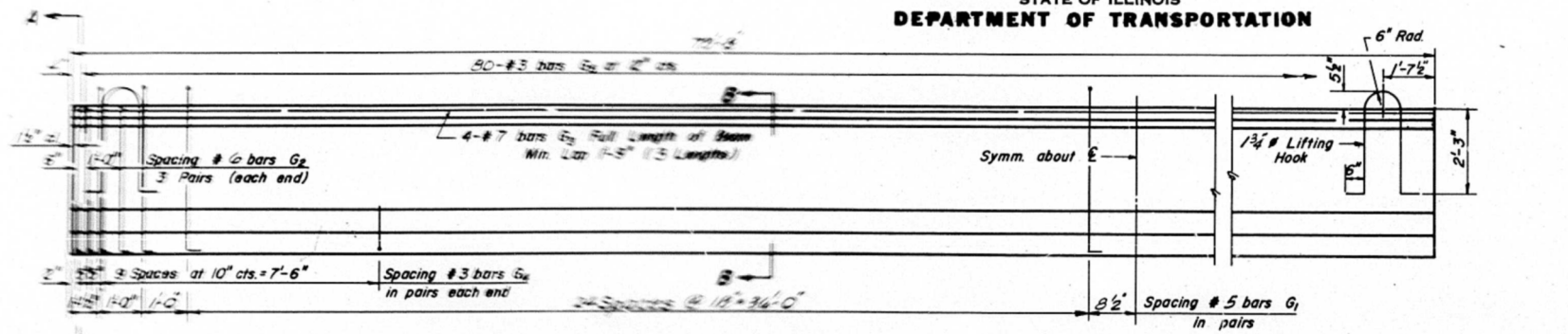
LINE DIAGRAM

SCALE: SHEET OF SHEETS STA. TO STA.

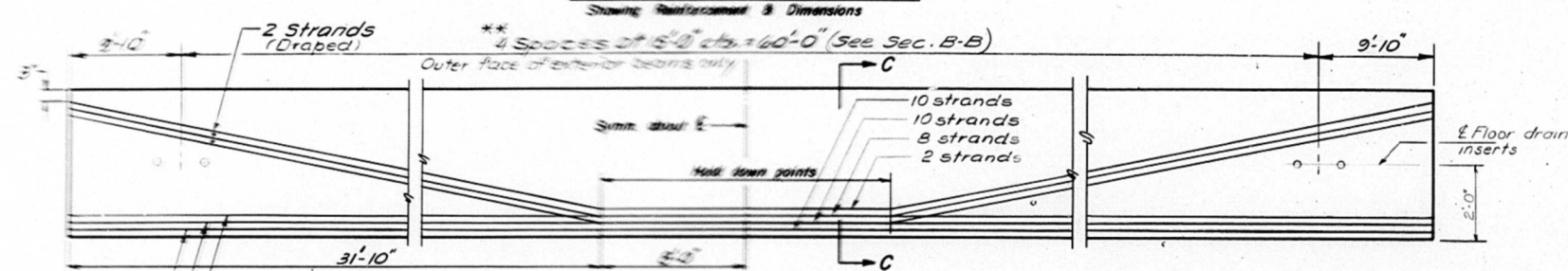
F.A.P. RTE.	SECTION	COUNTY	TOTAL SHEETS	SHEET NO.
534	(111BR)BRR	HENDERSON	11	5
CONTRACT NO. 68F60			ILLINOIS FED. AID PROJECT	

STATE OF ILLINOIS
DEPARTMENT OF TRANSPORTATION

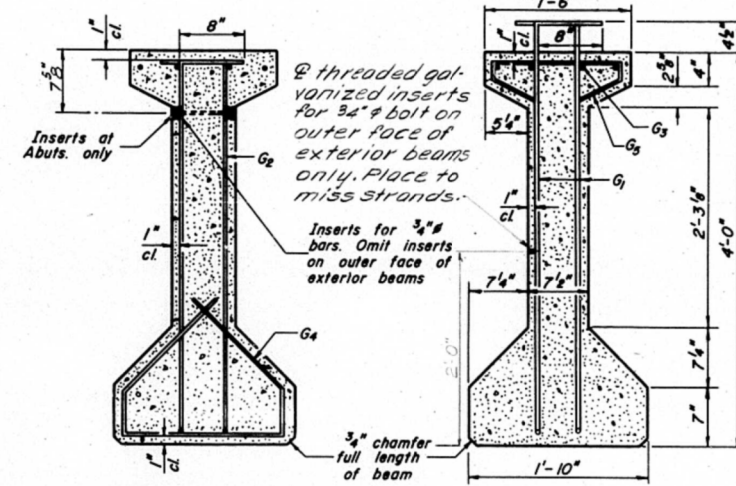
ROUTE NO.	SECTION	COUNTY	TOTAL SHEETS	SHEET NO.
F.A. 534	111BR	HENDERSON	18	11
SHEET NO. 7 10 SHEETS				



ELEVATION OF BEAMS

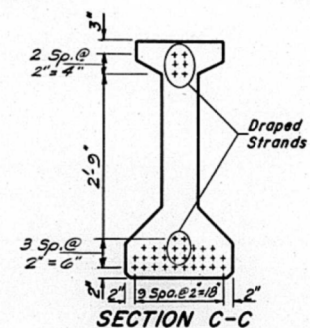


ELEVATION OF BEAMS

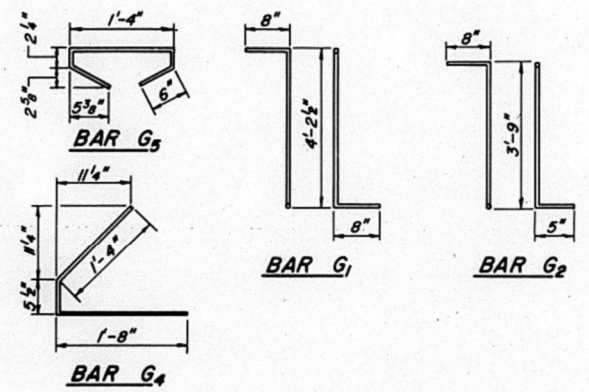


SECTION A-A

SECTION B-B



SECTION C-C



*BAR LIST

Bar	No.	Size	Length	Shape
G ₁	10B	#5	5'-6"	TL
G ₂	12	#6	4'-10"	TL
G ₃	12	#7	27'-8"	—
G ₄	4B	#3	3'-5"	L
G ₅	80	#3	2'-8 1/2"	○

*For one beam only.

BILL OF MATERIAL

Item	Unit	Total
Furnishing & Erecting Precast Prestressed Concrete I-Beams, 48"	Lin. Ft.	478

NOTES

All inserts and threaded rods for inserts, reinforcing and Prestressing Steel, and other items which are cast into the Precast Concrete I-Beams shall be included in the contract unit price per linear foot of "Furnishing And Erecting Precast Prestressed Concrete I-Beams, 48 In."

Prestressing Steel shall have a nominal diameter of 1/2".
Inserts for 3/4" threaded rods are to be two strut, coil type for interior I-Beams and single coil, flared loop type for exterior I-Beams.
Steel for lifting hooks shall be non-deformed bars f_y = 40,000 psi.

DESIGNED	EXAMINED
CHECKED	PASSED
DRAWN	APPROVED
CHECKED	DIRECTOR OF HIGHWAYS

PI-4-48 3-5-72

P.P.C. I-BEAM DETAILS
F.A. RT.534 SEC.III BR
HENDERSON COUNTY
STA.491+90.3

STATE OF ILLINOIS
DEPARTMENT OF TRANSPORTATION

EXISTING STRUCTURE

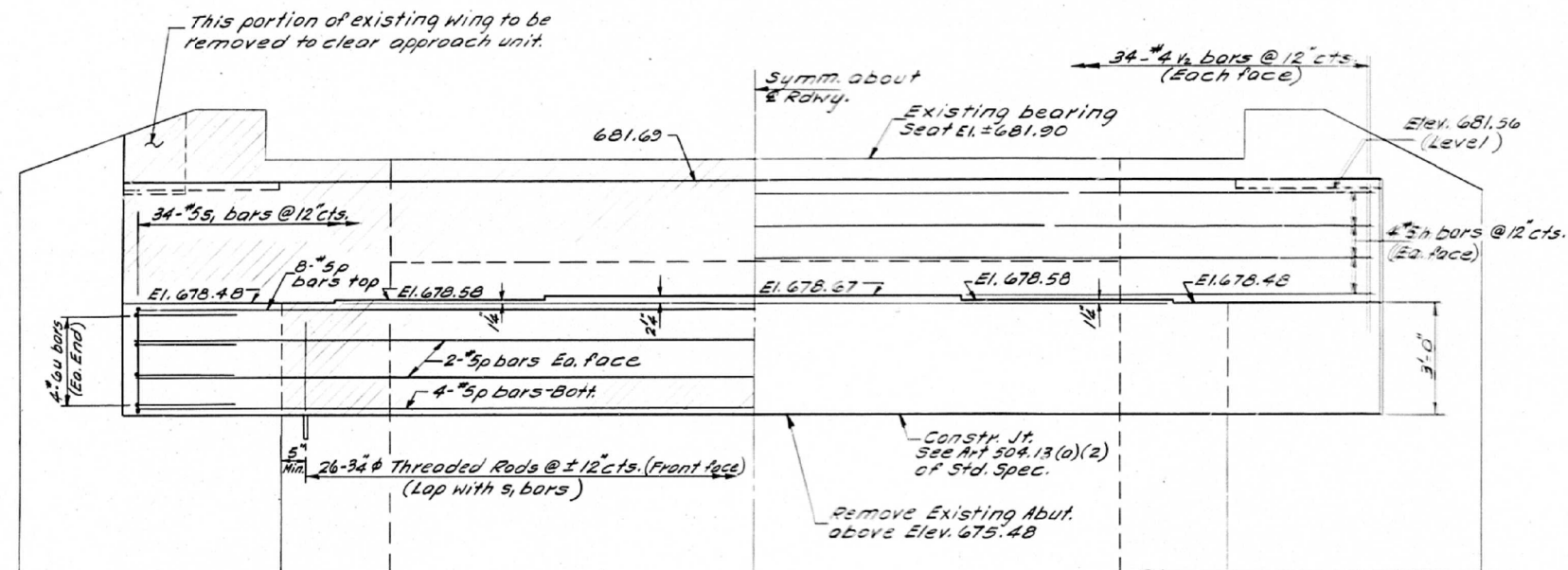
USER NAME = elderist	DESIGNED -	REVISED -
PLOT SCALE = 100,1627' / in.	DRAWN -	REVISED -
PLOT DATE = 3/24/2020	CHECKED -	REVISED -
	DATE -	REVISED -

SCALE:	SHEET 1	OF 4	SHEETS	STA.	TO STA.
--------	---------	------	--------	------	---------

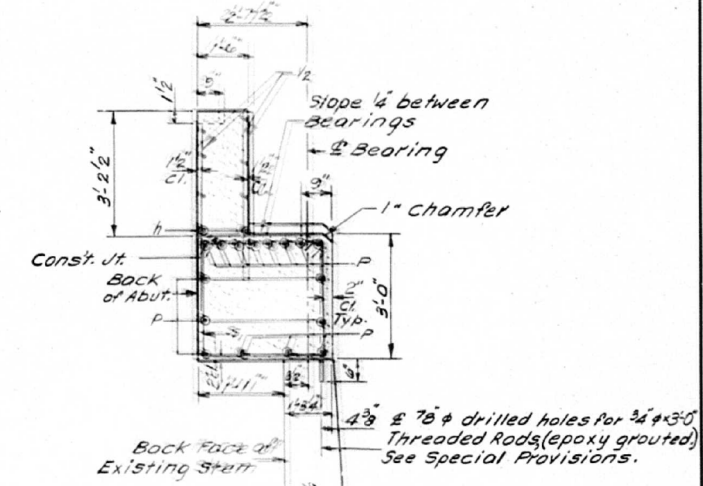
F.A.P. RTE.	SECTION	COUNTY	TOTAL SHEETS	SHEET NO.
534	(111BR)BRR	HENDERSON	11	6
CONTRACT NO. 68F60				
ILLINOIS FED. AID PROJECT				

STATE OF ILLINOIS
DEPARTMENT OF TRANSPORTATION

SECTION	COUNTY	TOTAL SHEETS	SHEET NO.	SHEET NO.
111BR	Henderson	18	14	10 SHEETS



ELEVATION



SECTION A-A

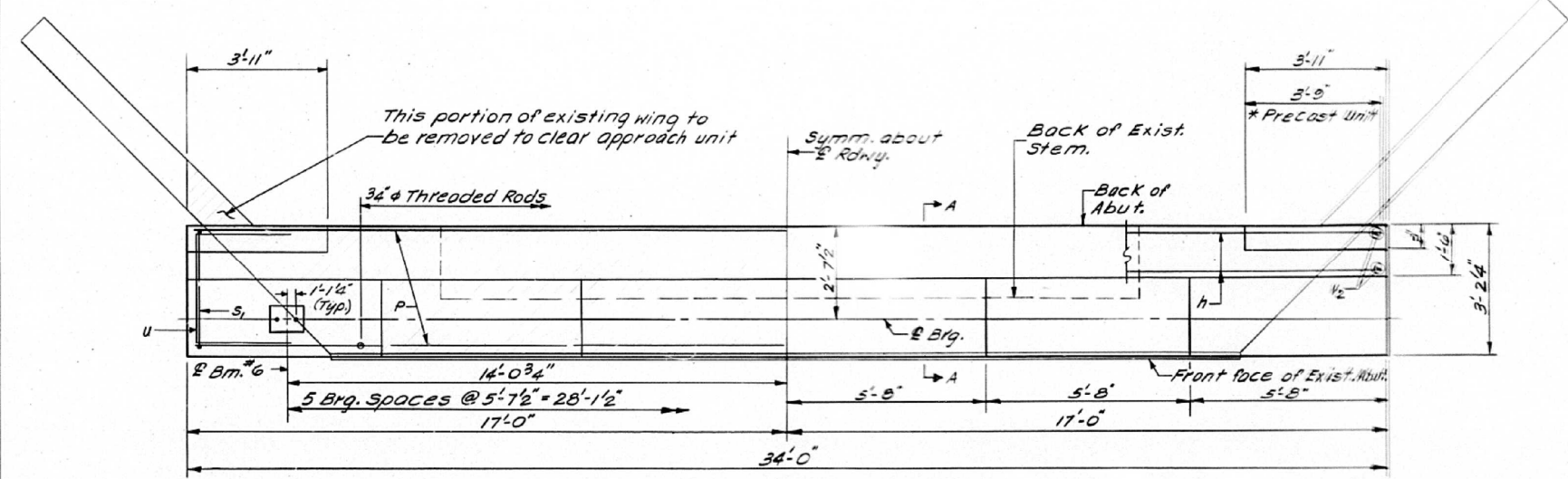
NOTES

Hatched area indicates concrete removal. Reinforcement extending into removed area shall be cleaned and incorporated into the new construction. Cut off existing reinforcement at Elev. 677.38.

All edges shall have standard 3/4" chamfers except as noted.

* See Sht. #3 for spacing of dowel bars in abutment for precast approach unit.

Four steps monolithically with cap. Space reinforcement to miss anchor bolts.



PLAN

BILL OF MATERIAL

BAR	No.	SIZE	Length	Shape
h	8	#5	33'-9"	—
P	16	#5	33'-9"	—
S ₁	34	#5	11'-11"	□
U	8	#6	8'-7"	□
V ₂	68	#4	4'-2"	—
Class X Concrete			Cu.Yds.	18.3
Reinforcement Bars			Lbs.	1560
Threaded rods 3/4" Each				26
Concrete Removal			Cu.Yds.	17.8

Details of S₁ & U bars on Sht. 9

DESIGNED *W. Thompson*

CHECKED *Steen & Rye*

DRAWN *LL*

CHECKED *SM*

EXAMINED *W. Thompson*

PASSED

APPROVED

SEPT. 28 1977

NORTH ABUTMENT
F.A. RT. 534 SEC. III BR
HENDERSON COUNTY
STA. 491+90.3

MODEL: Default
FILE NAME: dms:\planroom\dot\illinois\gov\p\w\DOT\Documents\IDOT_Offices\Distrikt 4\Projects\Squad 6 4\68F60\Plan_Details.dgn

USER NAME = elderzist	DESIGNED -	REVISED -
PLOT SCALE = 100.1627' / in.	DRAWN -	REVISED -
PLOT DATE = 3/24/2020	CHECKED -	REVISED -
	DATE -	REVISED -

STATE OF ILLINOIS
DEPARTMENT OF TRANSPORTATION

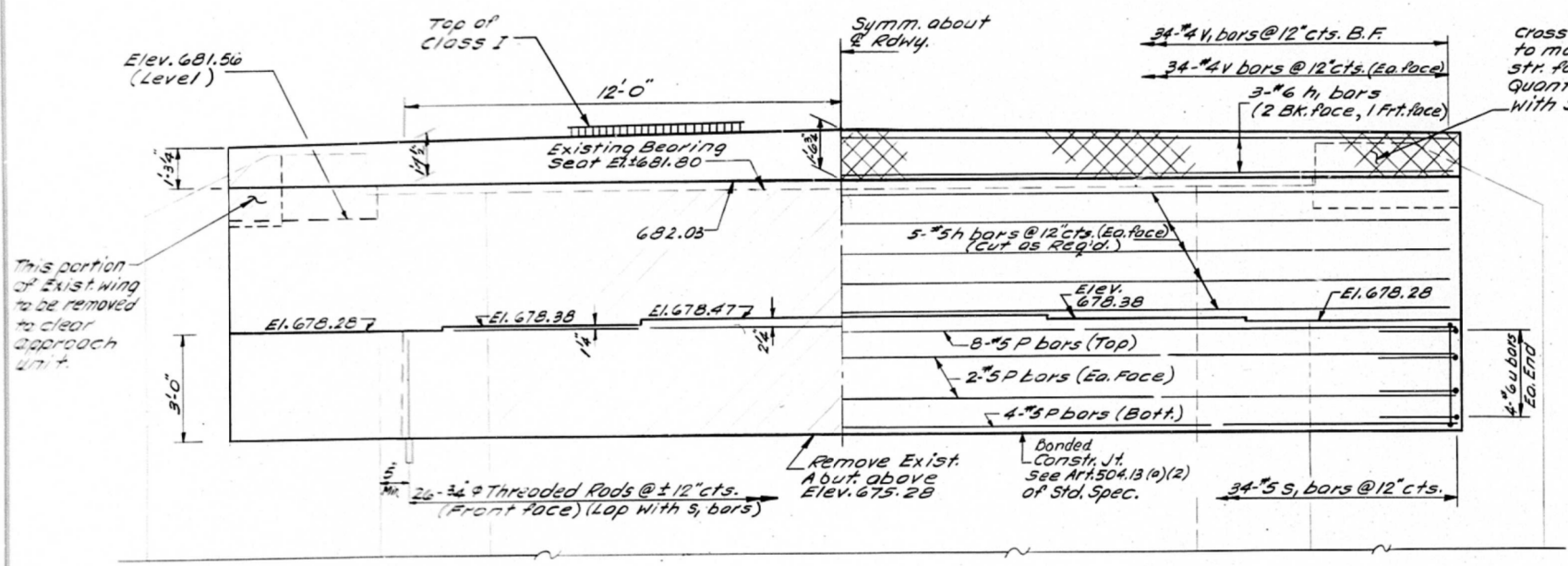
EXISTING STRUCTURE

SCALE: SHEET 2 OF 4 SHEETS STA. TO STA.

F.A.P. RTE.	SECTION	COUNTY	TOTAL SHEETS	SHEET NO.
534	(111BR)BR	HENDERSON	11	7
CONTRACT NO. 68F60				
ILLINOIS FED. AID PROJECT				

STATE OF ILLINOIS
DEPARTMENT OF TRANSPORTATION

ROUTE NO.	SECTION	COUNTY	TOTAL SHEETS	SHEET NO.	SHEET NO. 9
F.A. 534	111BR	HENDERSON	18	13	10 SHEETS
FED. ROAD DIST. NO. 7			FED. AID PROJECT		

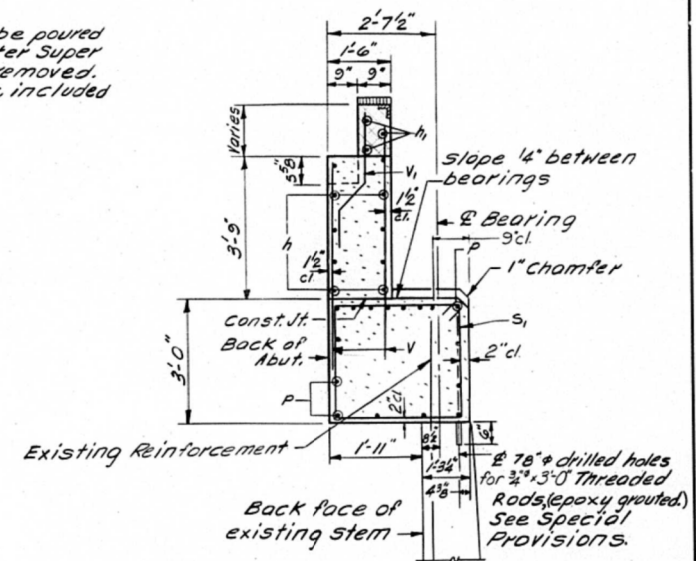


DIMENSIONS

ELEVATION

REINFORCEMENT

Cross hatched area to be poured to match Superstr. after Super str. forms have been removed. Quant. of Class X Conc. included with Superstr.



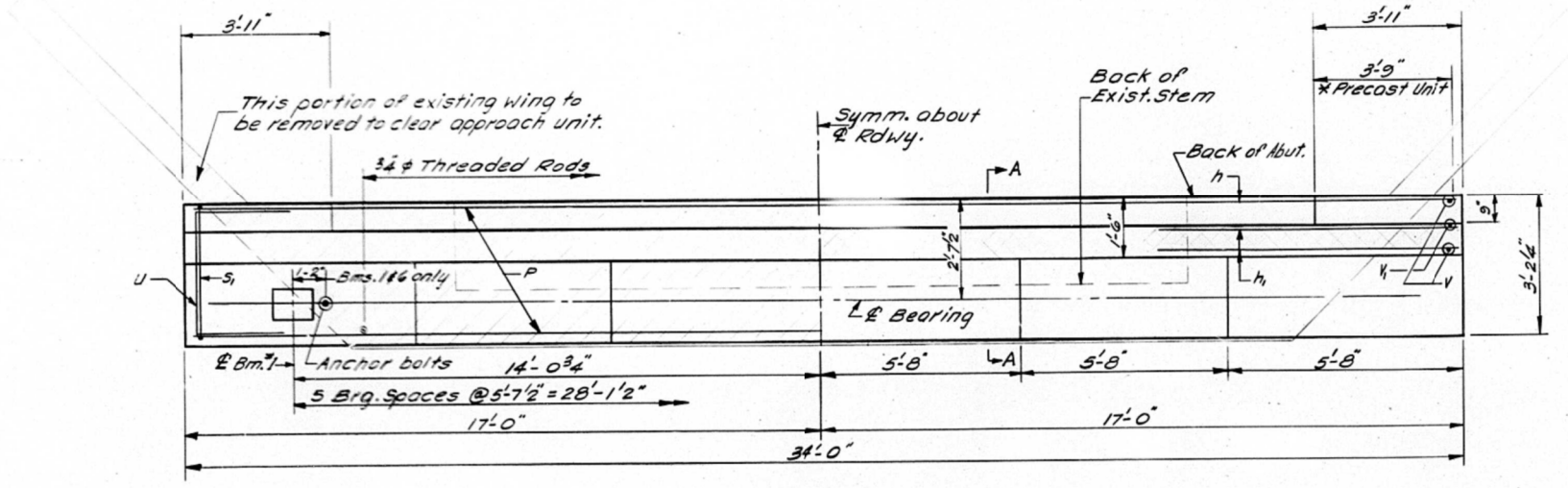
SECTION A-A

NOTES

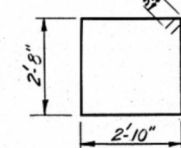
Hatched area indicates Concrete Removal. Reinforcement extending into removed area shall be cleaned and incorporated into the new construction. Cut off existing Reinforcement at El. 677.68. All edges shall have standard 3/4" chamfers except as noted. See Sht. #3 for spacing of dowel bars in abutment for precast approach unit. Pour steps monolithically with cap. Space Reinf. to miss Anchor bolts.

BILL OF MATERIAL

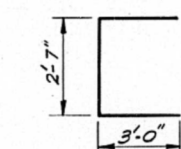
BAR	NO.	SIZE	Length	Shape
h	10	#5	33'-9"	—
h1	3	#6	33'-9"	—
P	16	#5	33'-9"	—
S1	34	#5	11'-11"	□
U	8	#6	8'-7"	□
V	68	#4	6'-0"	—
V1	34	#4	4'-3"	—
Class X Concrete			Cu. Yds.	13.3
Reinforcement Bars			Lbs.	1960
Threaded Rods 3/4" dia Each				26
Concrete Removal			Cu. Yds.	18.1



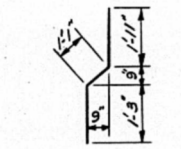
PLAN



BAR S1



BAR U



BAR V1

DESIGNED <i>W.T. Gange</i>	EXAMINED <i>SEPT. 20 1977</i>
CHECKED <i>Steve A. Meyer</i>	PASSED
DRAWN <i>[Signature]</i>	APPROVED
CHECKED <i>SAM</i>	

SOUTH ABUTMENT
F.A. RT. 534 SEC. III BR
HENDERSON COUNTY
STA. 491 + 90.3

MODEL: Default
FILE NAME: d:\planroom\dot\illinois\gov\p\dot\Documents\DOT_Office\Dist\Dist\4\projects\squad & 68f60\Plan_Details.dgn

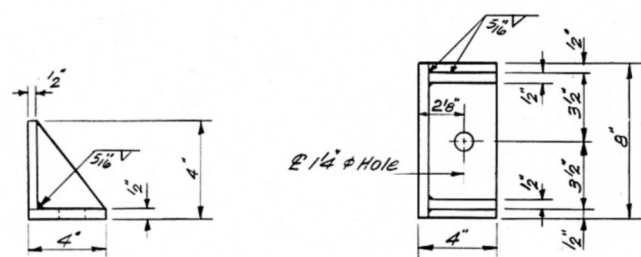
USER NAME = elderzst	DESIGNED -	REVISED -	STATE OF ILLINOIS DEPARTMENT OF TRANSPORTATION	EXISTING STRUCTURE	F.A.P. RTE.	SECTION	COUNTY	TOTAL SHEETS	SHEET NO.
PLOT SCALE = 100.1627' / in.	DRAWN -	REVISED -			534	(111BR)BRR	HENDERSON	11	8
PLOT DATE = 3/24/2020	CHECKED -	REVISED -			CONTRACT NO. 68F60				
	DATE -	REVISED -	SCALE:	SHEET 3 OF 4 SHEETS	STA. TO STA.	ILLINOIS FED. AID PROJECT			

STATE OF ILLINOIS
DEPARTMENT OF TRANSPORTATION

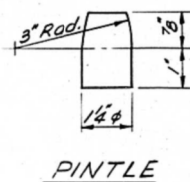
1/4" Pintles-Thread
or press fit 1" into
bearing assembly

ROUTE NO.	SECTION	COUNTY	TOTAL SHEETS	SHEET NO.
F.A.R. 534	111BR	Henderson	15	12
FED. ROAD DIST. NO. 1	CLASS	FED. AID PROJECT		

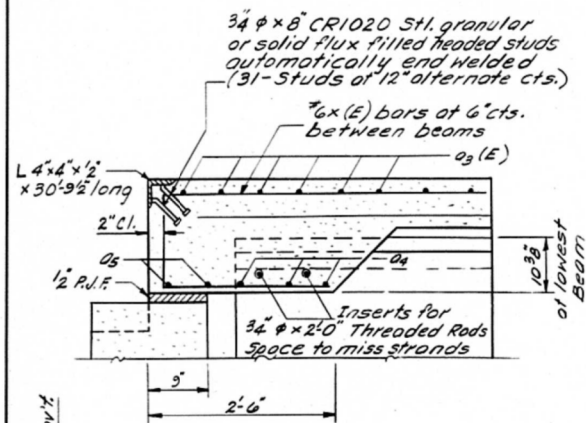
SHEET NO. 8
10 SHEETS



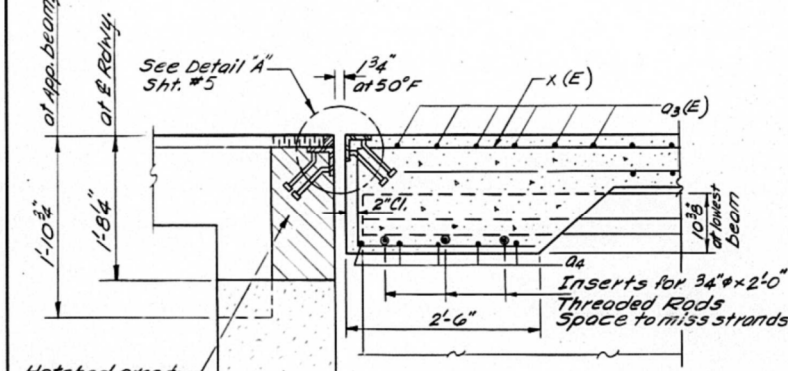
SIDE RETAINER



PINTLE



SECTION B-B
AT N. ABUTMENT

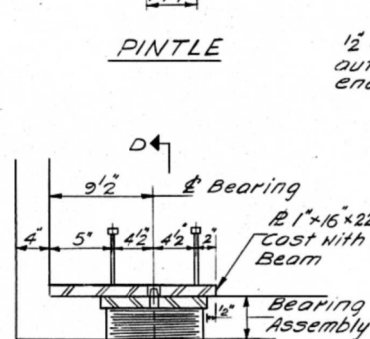


SECTION A-A
AT S. ABUTMENT

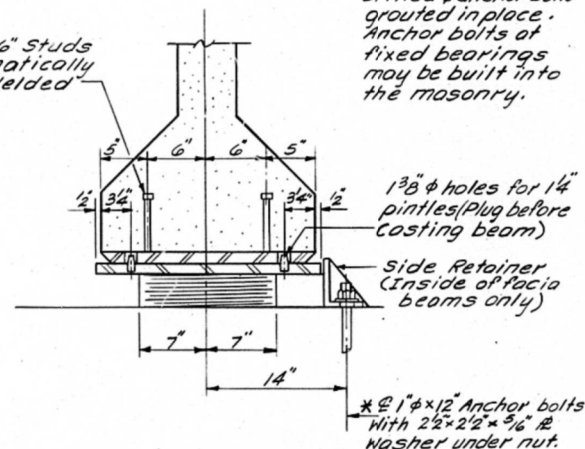
Hatched area to be poured after Superstr. forms have been removed. Quantity of class X Conc. included with Superstructure.

DESIGNED WITH	EXAMINED
CHECKED <i>Stan A. Meyer</i>	PASSED
DRAWN <i>SAH</i>	APPROVED
CHECKED <i>SAH</i>	

DESIGNED	REVISIONS
DRAWN	REVISIONS
CHECKED	REVISIONS
DATE	REVISIONS

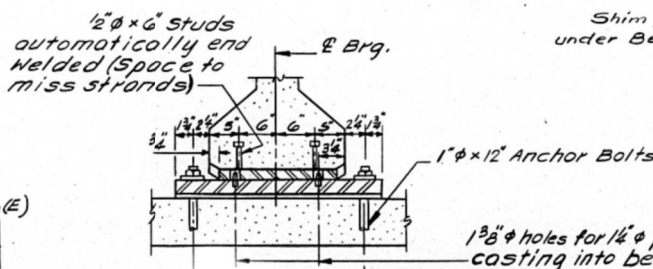


SECTION AT S. ABUTMENT

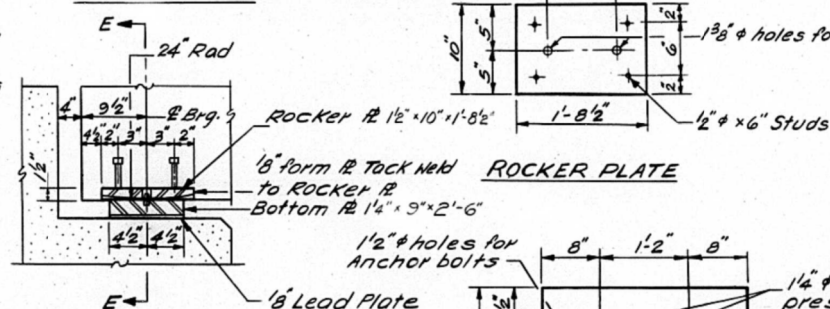


SECTION D-D

TYPE I ELASTOMERIC EXPANSION BEARING
(SOUTH ABUTMENT)

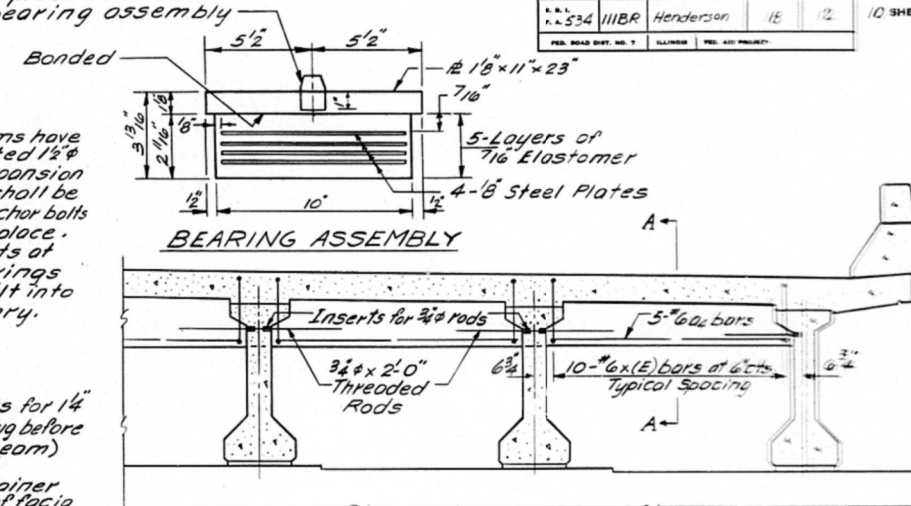


SECTION E-E

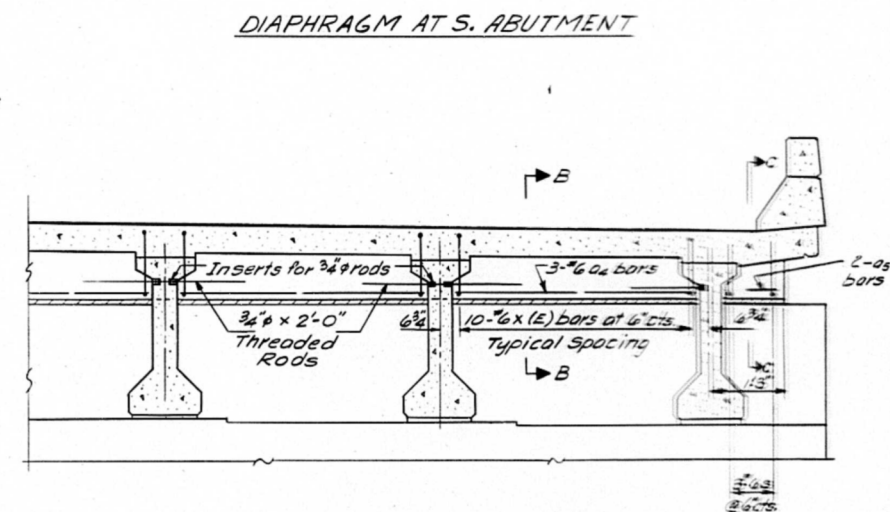


SECTION AT N. ABUT

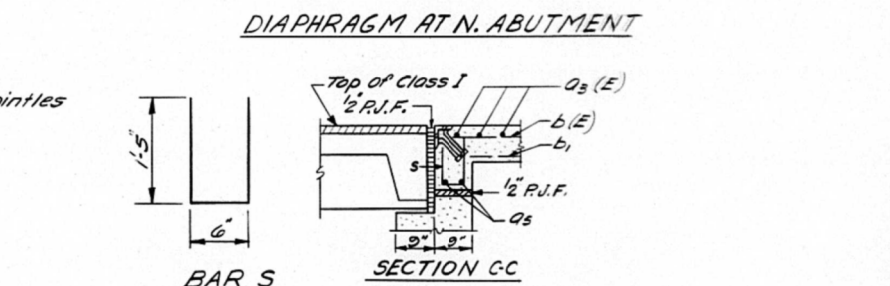
FIXED BEARING
NORTH ABUTMENT



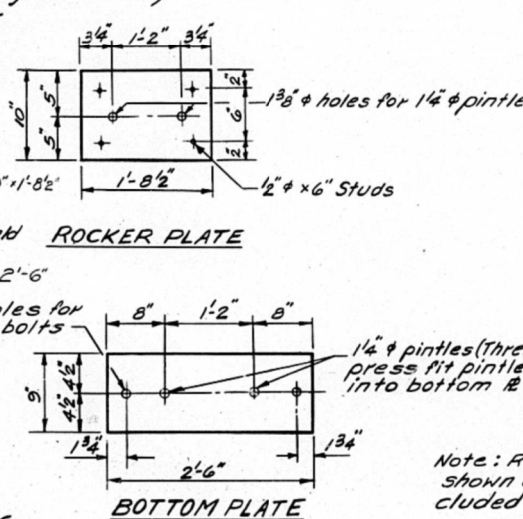
BEARING ASSEMBLY



DIAPHRAGM AT S. ABUTMENT



DIAPHRAGM AT N. ABUTMENT



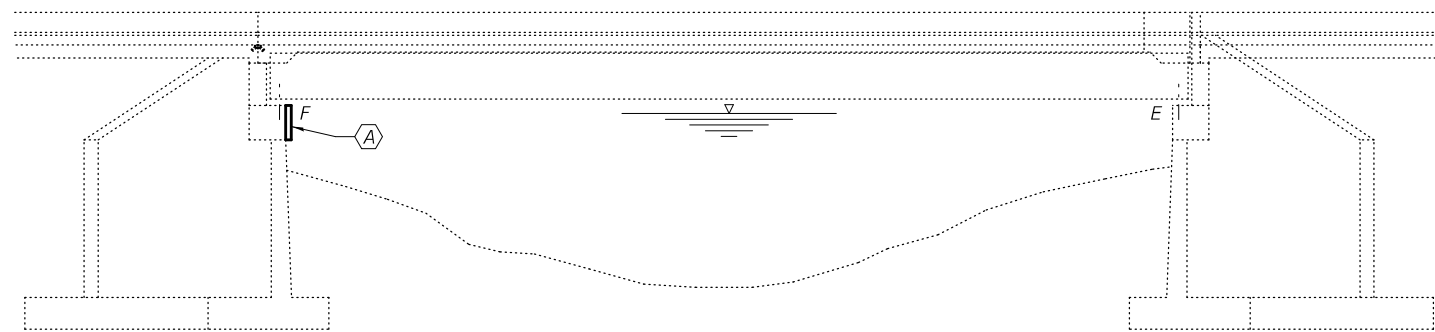
BOTTOM PLATE

Note: Reinforcement bars shown on this sht. are included in Bill of Mat on Sht. #6

BEARING & DIAPHRAGM DETAILS
F.A.R. 534 SEC. 111 BR
HENDERSON COUNTY
STA. 491+90.3

MODEL: Default
FILE NAME: p:\projects\illinois\dot\Documents\DOT_Offices\District_4\Projects\Squad_6_468F60\Plan_Details.dgn

USER NAME = elderzsl	DESIGNED -	REVISED -	STATE OF ILLINOIS DEPARTMENT OF TRANSPORTATION	EXISTING STRUCTURE	F.A.P. RTE. 534	SECTION (111BR)BRR	COUNTY HENDERSON	TOTAL SHEETS 11	SHEET NO. 9	
PLOT SCALE = 100.1627' / in.	DRAWN -	REVISED -			SCALE:	SHEET 4 OF 4 SHEETS	STA.	TO STA.	ILLINOIS	FED. AID PROJECT
PLOT DATE = 3/24/2020	CHECKED -	REVISED -							CONTRACT NO. 68F60	
	DATE -	REVISED -								

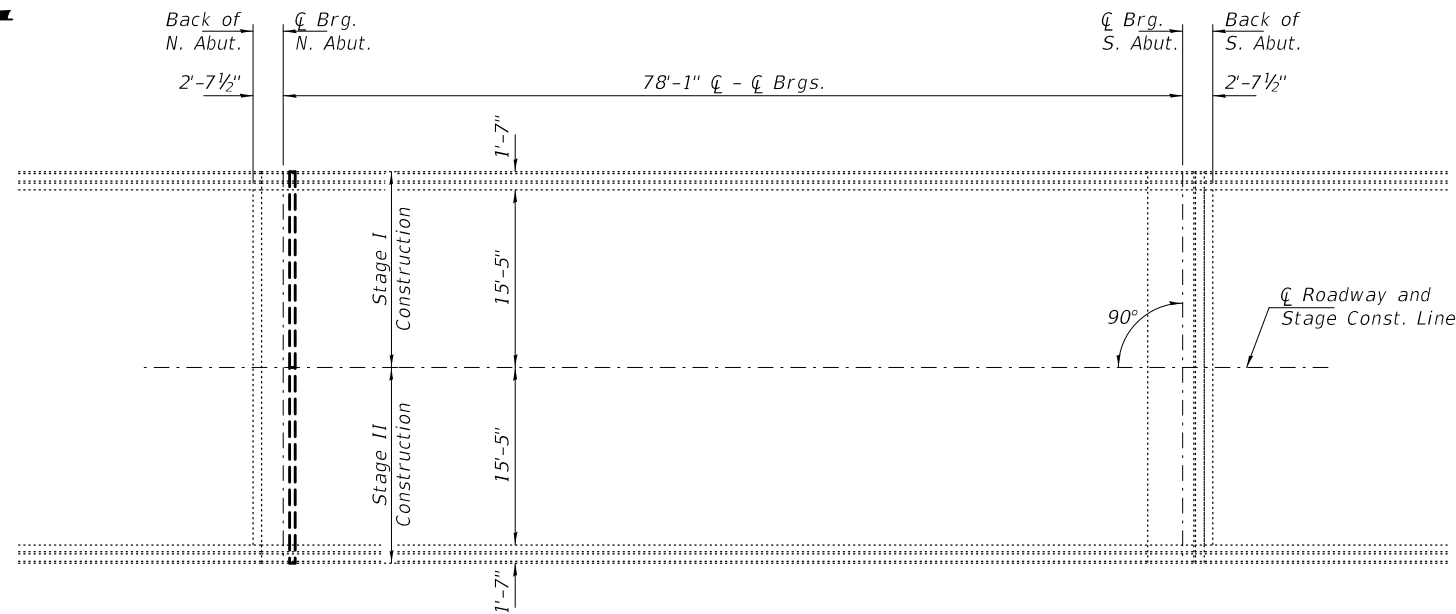
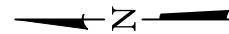


ELEVATION

GENERAL NOTES

Plan dimensions and details relative to existing plans are subject to nominal construction variations. The Contractor shall field verify existing dimensions and details affecting new construction and make necessary approved adjustments prior to construction or ordering of materials. Such variations shall not be cause for additional compensation for a change in scope of the work, however, the Contractor will be paid for the quantity actually furnished at the unit price bid for the work.

Reinforcement bars designated (E) shall be epoxy coated.
Existing reinforcement bars extending into the repair area shall be cleaned, straightened and incorporated into the new construction. Any reinforcement bars that are damaged during concrete removal shall be replaced with an approved bar splicer or anchorage system. Cost included with Concrete Structures.



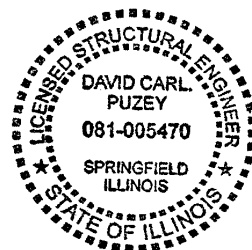
PLAN

Ⓐ - Abutment Cap Repair

TOTAL BILL OF MATERIAL

ITEM	UNIT	QUANTITY
Concrete Structures	Cu. Yd.	2.0
Reinforcement Bars, Epoxy Coated	Pound	390
Bar Splicers	Each	4
* Structural Repair of Concrete > 5"	Sq. Ft.	36
Temporary Shoring and Cribbing	Each	6

* Concrete to be poured monolithically with Concrete Structures.
Cost is included with Concrete Structures.



EXPIRES 11-30-2020

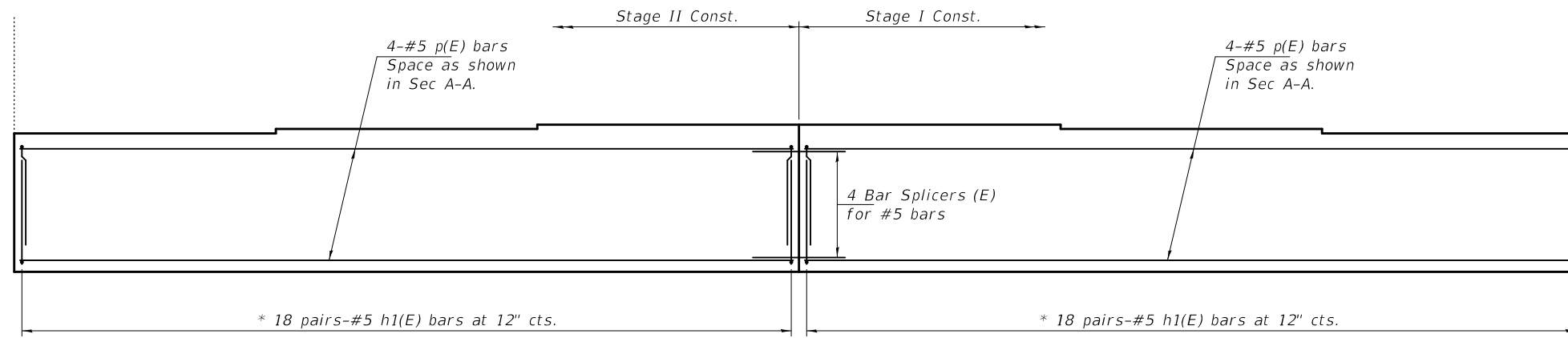
DESIGNED - Chi-Cheung Chau	EXAMINED - <i>Tracy A. Beck</i>	DATE - MAY 6, 2020
CHECKED - Adrian T. Halloway	PASSED - <i>David Carl Puze</i>	REVISER -
DRAWN - daburdell	ENGINEER OF BRIDGES AND STRUCTURES	REVISER -
CHECKED - CCC ATH		

STATE OF ILLINOIS
DEPARTMENT OF TRANSPORTATION

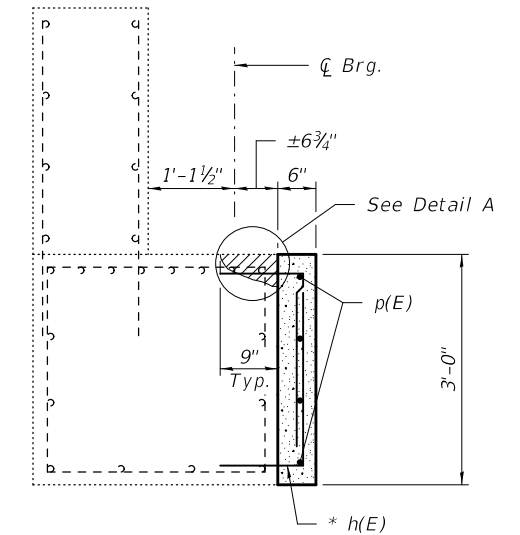
GENERAL PLAN AND ELEVATION
FAP 534 OVER HONEY CREEK
SN 036-0010

SHEET NO. 1 OF 3 SHEETS

F.A.P. RTE.	SECTION	COUNTY	TOTAL SHEETS	SHEET NO.
534	(111 BR) BRR	HENDERSON	11	10
CONTRACT NO. 68F60				
ILLINOIS FED. AID PROJECT				



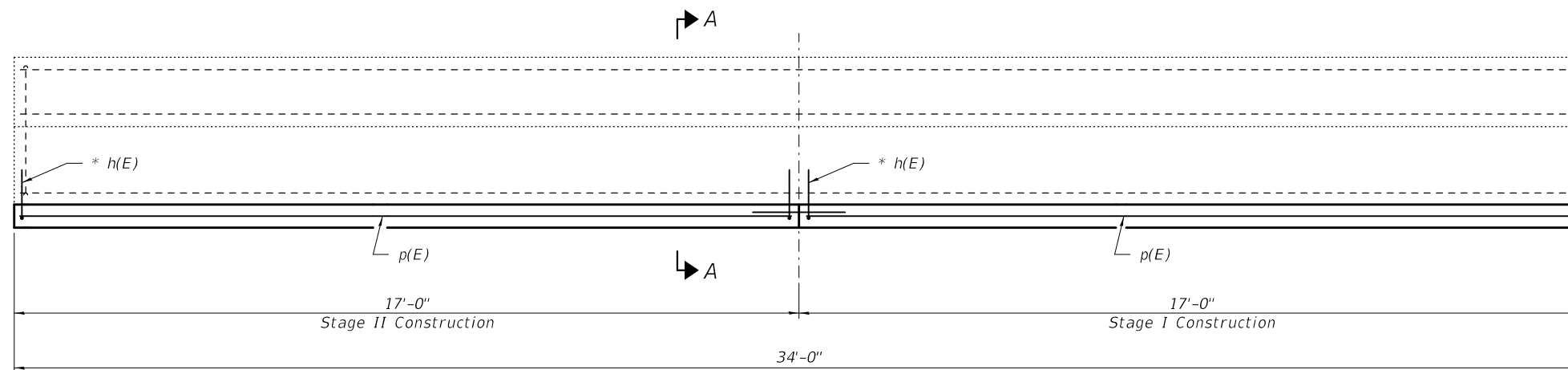
ELEVATION
(Looking North)



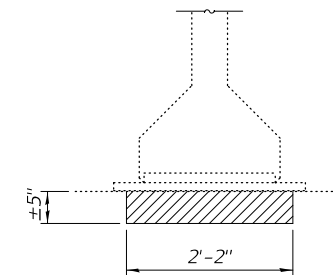
SECTION A-A

* Epoxy grout h(E) bars in 9" min. holes according to Article 584 of the Standard Specifications.

Note:
Hatched areas indicate damage at bearing locations.



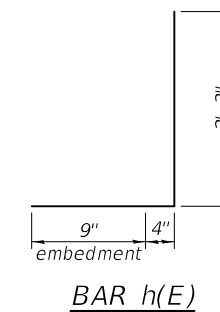
PLAN



DETAIL A

BEAM REACTIONS

R _ℓ	(K)	50.2
R _⊥	(K)	32.4
Imp.	(K)	8.1
R (Total)	(K)	90.7



BILL OF MATERIAL

Bar	No.	Size	Length	Shape	
h(E)	72	#5	3'-4"	┐	
p(E)	8	#5	16'-8"	—	
Concrete Structures				Cu. Yd.	2.0
Reinforcement Bars, Epoxy Coated				Pound	390
Bar Splicers				Each	4

DESIGNED - CCC
CHECKED - ATH
DRAWN - daburdell
CHECKED - CCC ATH

EXAMINED
PASSED

Timothy A. Daburdell
ENGINEER OF STRUCTURAL SERVICES

Carl R. King
ENGINEER OF BRIDGES AND STRUCTURES

DATE - MAY 6, 2020

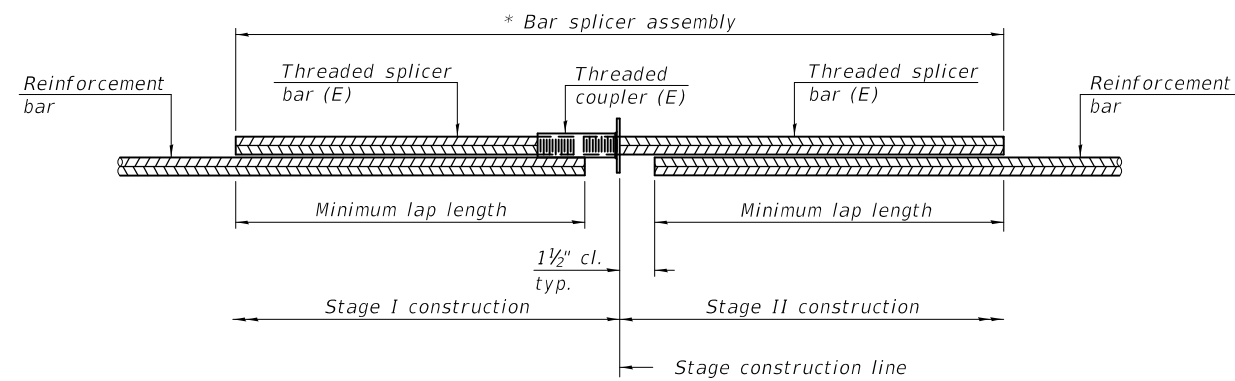
REVISED -
REVISED -

**STATE OF ILLINOIS
DEPARTMENT OF TRANSPORTATION**

**REPAIR DETAILS - NORTH ABUTMENT
SN 036-0010**

SHEET NO. 2 OF 3 SHEETS

F.A.P. RTE.	SECTION	COUNTY	TOTAL SHEETS	SHEET NO.
534	(111 BR) BRR	HENDERSON	11	11
CONTRACT NO. 68F60				
ILLINOIS FED. AID PROJECT				

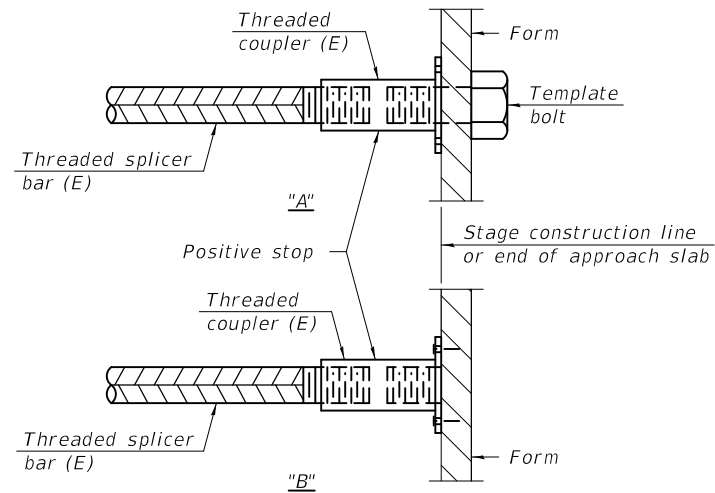


STANDARD BAR SPLICER ASSEMBLY PLAN
 (All components shall be provided from one supplier)

Threaded splicer bar length = min. lap length + 1 1/2" + thread length

* Epoxy not required on Bar Splicer Assembly components used in conjunction with black bars.

Location	Bar size	No. assemblies required	Minimum lap length
N. Abut.	#5	4	3'-4"

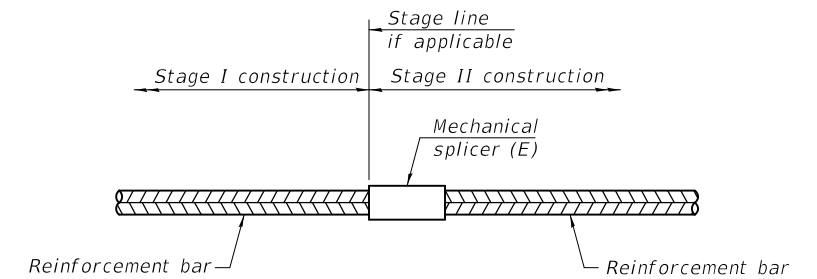


INSTALLATION AND SETTING METHODS

"A" : Set bar splicer assembly by means of a template bolt.

"B" : Set bar splicer assembly by nailing to wood forms or cementing to steel forms.

(E) : Indicates epoxy coating.



STANDARD MECHANICAL SPLICER

Location	Bar size	No. assemblies required

Notes:

Splicer bars shall be deformed with threaded ends and have a minimum 60 ksi yield strength.

All reinforcement shall be lapped and tied to the splicer bars.

Bar splicer assemblies shall be epoxy coated according to the requirements for reinforcement bars. See Section 508 of the Standard Specifications.

See approved list of bar splicer assemblies and mechanical splicers for alternatives.

BSD-1

1-1-2020

DESIGNED - CCC	EXAMINED	DATE - MAY 6, 2020
CHECKED - ATH	<i>Timothy A. ...</i> ENGINEER OF STRUCTURAL SERVICES	REVISED -
DRAWN - daburdell	PASSED	REVISED -
CHECKED - CCC ATH	<i>Carl ...</i> ENGINEER OF BRIDGES AND STRUCTURES	

**STATE OF ILLINOIS
 DEPARTMENT OF TRANSPORTATION**

BAR SPLICER ASSEMBLY AND MECHANICAL SPLICER DETAILS
SN 036-0010

SHEET NO. 3 OF 3 SHEETS

F.A.P. RTE.	SECTION	COUNTY	TOTAL SHEETS	SHEET NO.
534	(111 BR) BRR	HENDERSON	11	11A
CONTRACT NO. 68F60				
ILLINOIS FED. AID PROJECT				