

STATE OF ILLINOIS  
DEPARTMENT OF TRANSPORTATION

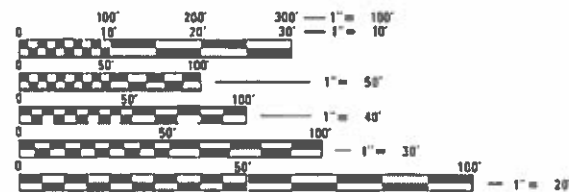
F.A.P. RTE.	SECTION	COUNTY	TOTAL SHEETS	SHEET NO.
310	(87) BP	SCHUYLER	6	1
CONTRACT NO. 72L57				

FOR INDEX OF SHEETS, SEE SHEET NO. 2

# PROPOSED HIGHWAY PLANS

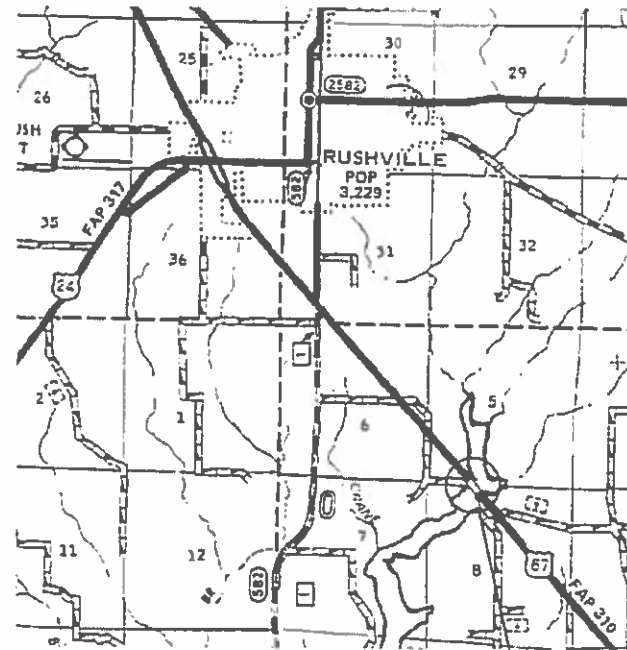
FAP ROUTE 310 (US 67)  
SECTION (87) BP  
PROJECT STP-1IZY(166)  
BRIDGE PAINTING  
SCHUYLER COUNTY

C-96-036-20



FULL SIZE PLANS HAVE BEEN PREPARED USING STANDARD ENGINEERING SCALES. REDUCED SIZED PLANS WILL NOT CONFORM TO STANDARD SCALES. IN MAKING MEASUREMENTS ON REDUCED PLANS, THE ABOVE SCALES MAY BE USED.

J.U.L.I.E.  
JOINT UTILITY LOCATION INFORMATION FOR EXCAVATORS  
1-800-892-0123  
OR 811



PROJECT LOCATION  
SN 085-0001  
US 67 OVER CRANE CREEK  
2.5 MI SE RUSHVILLE

BRIDGE MAINTENANCE ENGINEER: BRANDON DUDLEY – (217) 785-9290

GROSS LENGTH = x.xx FT. = x.xxx MILE  
NET LENGTH = x.xx FT. = x.xxx MILE

CONTRACT NO. 72L57

STATE OF ILLINOIS  
DEPARTMENT OF TRANSPORTATION

SUBMITTED Dec 11 2019  
*[Signature]* REGIONAL ENGINEER  
MAY 8 2020  
*[Signature]* ENGINEER OF DESIGN AND ENVIRONMENT  
MAY 8 2020  
*[Signature]* DIRECTOR OF HIGHWAYS PROJECT IMPLEMENTATION

PRINTED BY THE AUTHORITY  
OF THE STATE OF ILLINOIS





B.M. DA 300 = Chiseled "□" in top of center of concrete headwall NE of US 67, 0.9 miles NW of bridge 085-0001  
Elev. 569.176

Existing Structure: S.N. 085-0001 is a 3 span steel continuous structure built in 1959. The structure is 174'-7" Bk to Bk of abutments and has an O. to O. width of 35'-8" with a 30'-0" clear width. Span lengths are 54'-0", 63'-0" and 54'-0" with a skew of 0 Deg. The superstructure consists of a concrete deck with an overlay making a total thickness of 8" on 6-33" wide flange beams. The abutments are open with cap supported steel piles. The piers are hammerhead piers on steel piles.

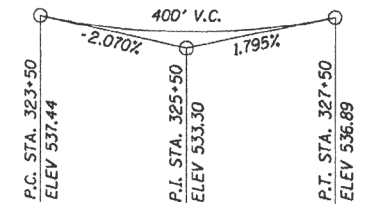
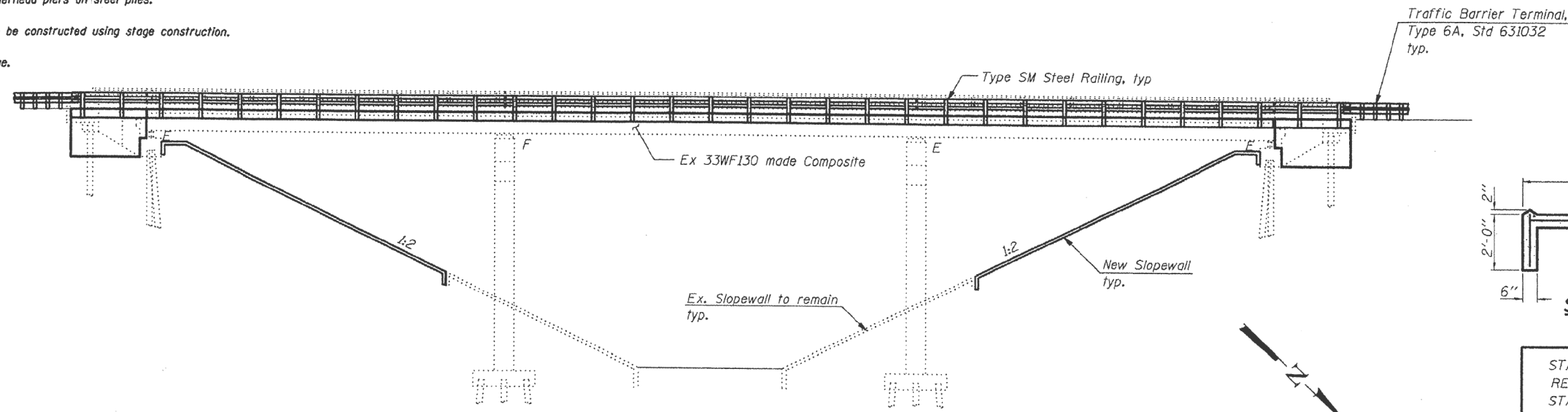
Bridge to be constructed using stage construction.

No Salvage.

STATE OF ILLINOIS  
DEPARTMENT OF TRANSPORTATION

SCOPE OF WORK

1. Remove and replace deck.
2. Remove and replace approach pavements.
3. Remove and replace abutment back walls.
4. Remove and replace upper portion of wingwalls.
5. Install stud shear connectors to make deck composite.
6. Replace the damaged slope wall sections.
7. Jack and remove existing expansion bearings at abutments. Replace with new elastomeric bearings and steel bolsters.
8. Proposed profile will be raised approximately 5". Change will be accommodated in the proposed fillets.



PR PROFILE US 67

LOADING HS-20

No allowance for future wearing surface.

DESIGN SPECIFICATIONS  
2002 AASHTO Standard Specifications  
for Highway Bridges

DESIGN STRESSES

FIELD UNITS (New Construction)

$f'_c = 3,500$  psi  
 $f_y = 60,000$  psi (Reinforcement)

FIELD UNITS (Existing Construction)

$f'_c = 3,500$  psi  
 $f_y = 40,000$  psi (Reinforcement)  
 $f_y = 33,000$  psi (Structural Steel)

SEISMIC DATA

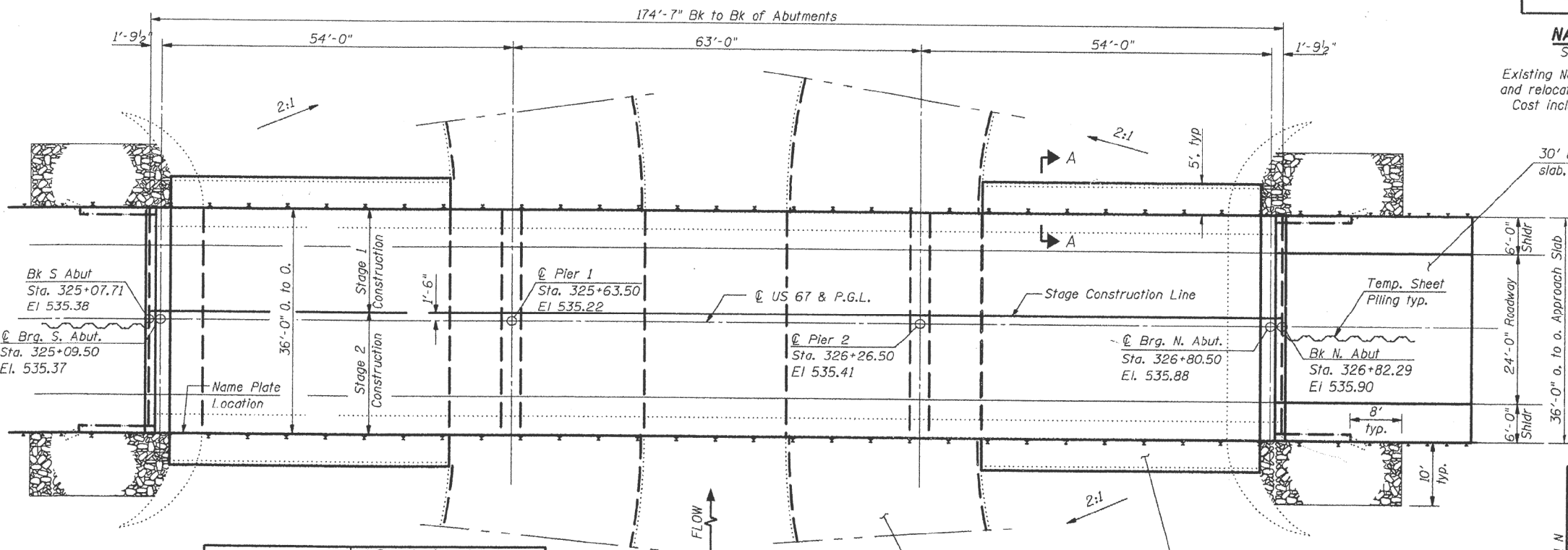
Seismic Category Zone (SPC) = A  
Bedrock Acceleration Coefficient (A) = .03g  
Site Coefficient (S) = 1.0

STATION 325+95.00  
RE-BUILT 20 BY  
STATE OF ILLINOIS  
F.A.P. 310 - SEC. (87B)BR  
LOADING HS20  
STRUCTURE NO. 085-0001

NAME PLATE

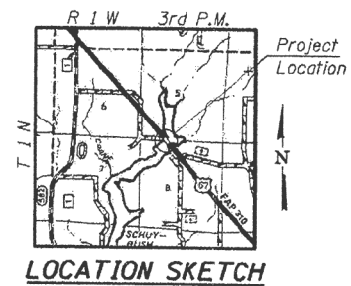
See Std. 515001

Existing Name Plate shall be cleaned and relocated next to new Name Plate. Cost included with "Name Plates."



02-Sept-2009  
Expires 30-Nov-2010

GENERAL PLAN  
F.A.P. 310 (US 67) OVER  
CRANE CREEK  
SECTION (87B)BR  
SCHUYLER COUNTY  
STRUCTURE NO. 085-0001  
STA. 325+95.00



SHEET NO. 1	F.A.P. RTE. 310 (US 67)	SECTION (87B) BR	COUNTY SCHUYLER	TOTAL SHEETS 80	SHEET NO. 42
20 SHEETS	CONTRACT NO. 72B95			ILLINOIS FED. AID PROJECT	

**HE**  
**HOELSCHER ENGINEERING**

11 Executive Drive Suite 12  
Fairview Heights, Illinois 62208  
(618) 624-8610  
(618) 624-8611 (fax)

2501 Chatham Road, Suite 120  
Springfield, Illinois 62704  
(217) 698-8610  
(217) 698-8608 (fax)

115 North Neil Street, Suite 105  
Champaign, Illinois 61820  
(217) 351-8610  
(217) 351-8611 (fax)

DESIGNED	CMW
CHECKED	JSA
DRAWN	TJW
CHECKED	CMW

APPROVED  
For Structural Adequacy Only

*Ralph E. Anderson*  
Engineer of Bridges & Structures

STATE OF ILLINOIS  
DEPARTMENT OF TRANSPORTATION

EXISTING BRIDGE PLANS, SN 085-0001  
(FOR INFORMATION ONLY)

SCALE: SHEET OF SHEETS STA. TO STA.

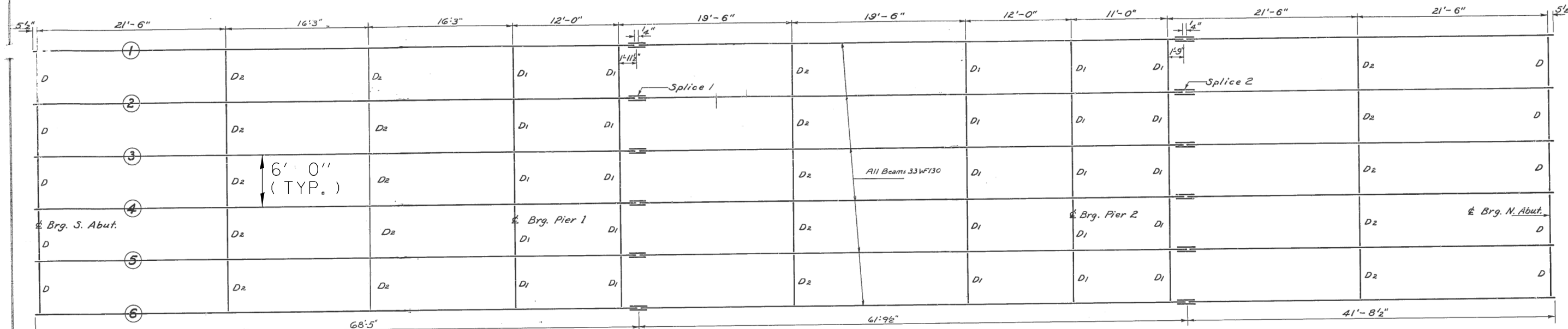
F.A.P. RTE. 310	SECTION (87) BP	COUNTY SCHUYLER	TOTAL SHEETS 6	SHEET NO. 4
CONTRACT NO. 72L57			ILLINOIS FED. AID PROJECT	

USER NAME = dudleybm	DESIGNED -	REVISED -
PLOT SCALE = 100,0000' / in.	DRAWN -	REVISED -
PLOT DATE = 12/10/2019	CHECKED -	REVISED -
	DATE -	REVISED -

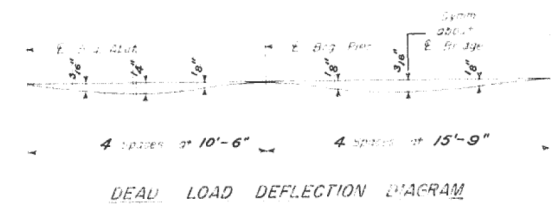
STATE OF ILLINOIS  
DEPARTMENT OF PUBLIC WORKS & BUILDINGS  
DIVISION OF HIGHWAYS

PROJECT NO.	SECTION	COUNTY	SHEET NO.	TOTAL SHEETS
4	87B	Schuyler	22	15

SHEET NO. 3  
8 SHEETS



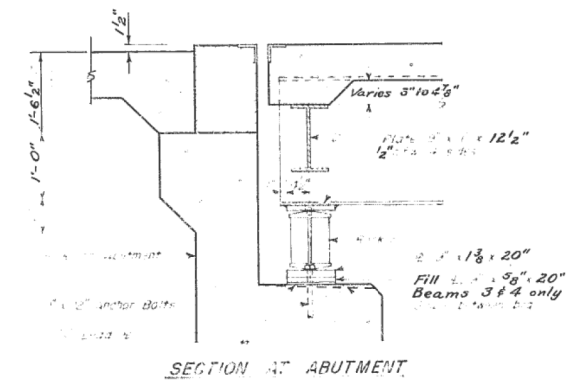
FRAMING PLAN



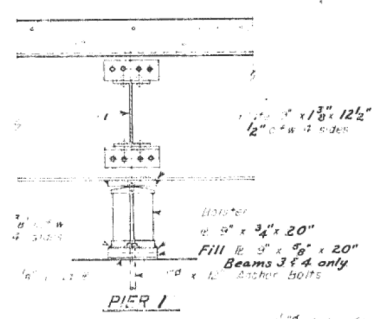
DEAD LOAD DEFLECTION DIAGRAM

ELEVATION TOP OF BEAMS

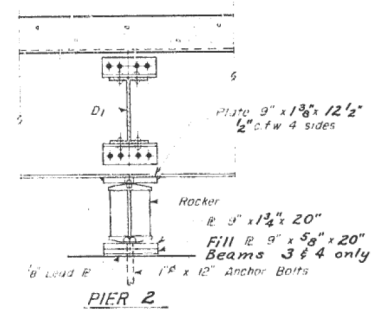
	Beam 1	Beam 2	Beam 3	Beam 4	Beam 5	Beam 6
Brig. S. Abut.	534.57	534.67	534.72	534.72	534.67	534.57
Brig. Pier 1	534.43	534.53	534.58	534.58	534.53	534.43
Splice 1	534.39	534.49	534.54	534.54	534.49	534.39
Brig. Pier 2	534.60	534.70	534.75	534.75	534.70	534.60
Splice 2	534.65	534.75	534.80	534.80	534.75	534.65
Brig. N. Abut.	535.07	535.17	535.22	535.22	535.17	535.07



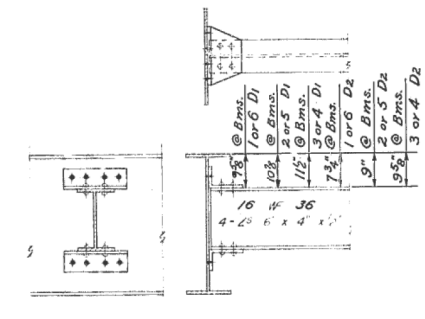
SECTION AT ABUTMENT



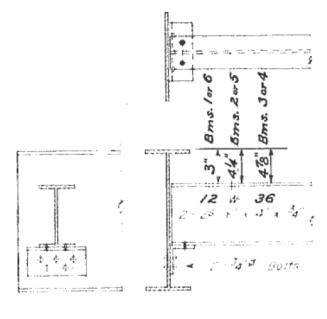
PIER 1



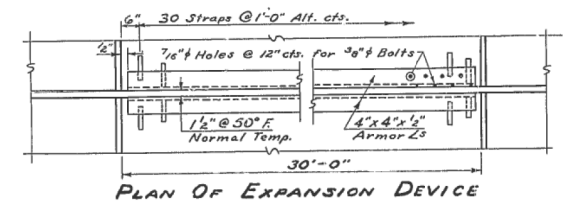
PIER 2



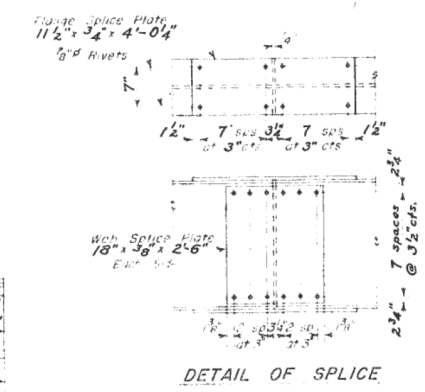
DIAPHRAGMS D1 & D2  
45 Required



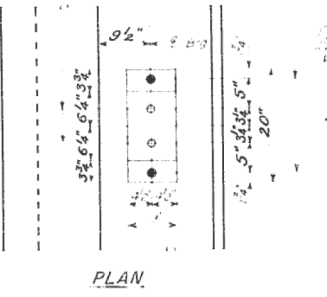
DIAPHRAGM D  
10 Required



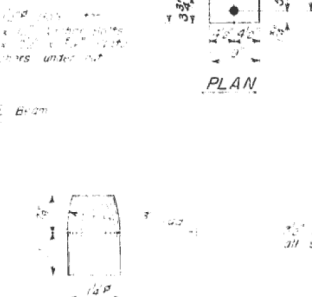
PLAN OF EXPANSION DEVICE



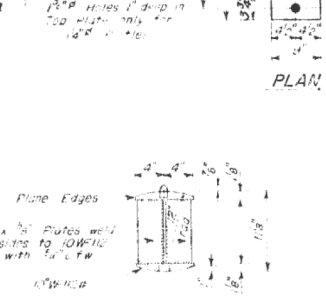
DETAIL OF SPLICE



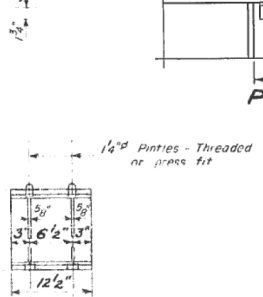
PLAN



DETAIL OF PINTLE



DETAIL OF BEARING AT PIER 2



DETAIL OF BEARING AT PIER 1

DESIGNED *Ronald C. Pitz*  
 EXAMINED *June 6, 1958*  
 DRAWN *W. A. Sorenson*  
 CHECKED *J. O. Sorenson*  
 DATE *9.9.58*  
 APPROVED *R. K. Batek*

**FRAMING PLAN &  
STRUCTURAL STEEL DETAILS**  
**F.A. RT. 4 SEC. 87B**  
**SCHUYLER COUNTY**  
**STATION 325 + 95**

MODEL: Default FILE NAME: C:\CONTRIB\OPERATIONS\Bridges\Bridges\CAD\72157 - 0850001.pml PLOT DATE: 1/15/2020

USER NAME = dudleybm	DESIGNED -	REVISED -
PLOT SCALE = 100,0000' / in.	DRAWN -	REVISED -
PLOT DATE = 1/15/2020	CHECKED -	REVISED -
	DATE -	REVISED -

**STATE OF ILLINOIS  
DEPARTMENT OF TRANSPORTATION**

EXISTING BRIDGE PLANS, SN 085-0001 (FOR INFORMATION ONLY)	
SCALE:	SHEET OF SHEETS STA. TO STA.

F.A.P. RTE.	SECTION	COUNTY	TOTAL SHEETS	SHEET NO.
310	(87) BP	SCHUYLER	6	5
ILLINOIS FED. AID PROJECT			CONTRACT NO. 72L57	

