

STATE OF ILLINOIS
DEPARTMENT OF TRANSPORTATION

F.A.S. P.T.E.	SECTION	COUNTY	TOTAL SHEETS	SHEET NO.
	(12, 13) PVMT PRSV	EFFINGHAM	14	1
ILLINOIS			CONTRACT NO. 74971	

* FAS 1652, FAU 8379 RUS 451

D-97-047-20



FOR INDEX OF SHEETS, SEE SHEET NO. 2

PROPOSED HIGHWAY PLANS

FAS ROUTE 1652, FAU ROUTE 8379 (US 45)
SECTION (12, 13) PVMT PRSV
PROJECT STP-LTLF(765)
CAPE SEAL
EFFINGHAM COUNTY

C-97-051-20

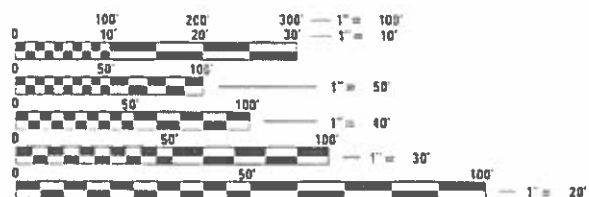
STATION EQUATION

STA 82+65.95 (BK) = 93+00.00 (AH)

BRIDGE OMISSION

STA 261+88 TO STA 262+31

ADT (2019) = 4250



FULL SIZE PLANS HAVE BEEN PREPARED USING STANDARD ENGINEERING SCALES. REDUCED SIZED PLANS WILL NOT CONFORM TO STANDARD SCALES IN MAKING MEASUREMENTS ON REDUCED PLANS THE ABOVE SCALES MAY BE USED.

J.U.L.I.E.
JOINT UTILITY LOCATION INFORMATION FOR EXCAVATORS
1-800-892-0123
OR 811

PROJECT ENGINEER BRIAN LEWIS
PROJECT MANAGER JESSICA HILLE

CONTRACT NO. 74971

PROJECT ENDS
STA 339+67

PROJECT BEGINS
STA 76+75



GROSS LENGTH = 25,257.95 FT. = 4.784 MILE
NET LENGTH = 25,214.95 FT. = 4.776 MILE

STATE OF ILLINOIS
DEPARTMENT OF TRANSPORTATION

SUBMITTED March 27 2020
Jeffrey P. Myerka REGIONAL ENGINEER
MAY 8 2020
Scott A. Etk ENGINEER OF DESIGN AND ENVIRONMENT
MAY 8 2020
Thomas J. ... DIRECTOR OF HIGHWAYS PROJECT IMPLEMENTATION

PRINTED BY THE AUTHORITY
OF THE STATE OF ILLINOIS

GENERAL NOTES

THE PROPOSED PROJECT IS LOCATED ON US 45 FROM NORTH OF RICKLEMAN AVENUE TO SHELBY/EFFINGHAM COUNTY LINE IN EFFINGHAM.

THE WORK INCLUDED IN SECTION (12,13)PVMT PRSV CONSISTS OF CAPE SEAL, PAINT PAVEMENT MARKING, THERMOPLASTIC PAVEMENT MARKING, RAISED REFLECTIVE PAVEMENT MARKERS REMOVAL, RAISED REFLECTIVE PAVEMENT MARKERS, PROTECTING OR RESETTING SURVEY MARKERS, TRAFFIC CONTROL, AND OTHER WORK NECESSARY TO COMPLETE THE SECTION.

IN ADDITION TO THE REQUIREMENTS OF ARTICLE 405.09(c) (4) EXISTING SURVEY MONUMENTS SHALL BE TEMPORARILY COVERED PRIOR TO APPLICATION OF THE CAPE SEAL TREATMENT TO PREVENT THE MATERIAL FROM BEING APPLIED TO THE SURVEY MONUMENTS. THE TEMPORARY COVERING SHALL BE REMOVED AFTER APPLICATION OF THE CAPE SEAL TREATMENT AND PRIOR TO OPENING TO TRAFFIC.

WATER BLAST THE THERMOPLASTIC PAVEMENT MARKING NORTH OF THE PILOT GAS STATION ENTRANCES BEING OVERLAID WITH CAPE SEAL.

RETRACE ALL THE THERMOPLASTIC PAVEMENT MARKING ON THE NORTHERN LEG OF THE RICKELMAN AVENUE INTERSECTION INCLUDING THE AREA OUTSIDE THE CAPE SEAL LIMITS.

QUANTITIES FOR PAINT PAVEMENT MARKING - LINE 4" CONSISTS OF 11,213 FEET OF YELLOW AND 48,288 FEET OF WHITE.

LONGITUDINAL JOINT REPAIR HAS BEEN INCLUDED TO FILL VOIDS LEFT BY THE REMOVAL OF RAISED REFLECTIVE PAVEMENT MARKERS.

THE FOLLOWING RATE OF APPLICATION HAS BEEN USED IN CALCULATING PLAN QUANTITIES:

LONGITUDINAL JOINT REPAIR 2.016 TON/CU YD

THE FOLLOWING IS A SUGGESTED SEQUENCE OF APPLICATION FOR PAVEMENT MARKINGS:

1. A-1 TREATMENT FOLLOWED IMMEDIATELY BY SHORT TERM PAVEMENT MARKING (PAINT).
2. CONSTRUCT MICROSURFACING IN THE LANE WITHOUT THE SHORT TERM PAVEMENT MARKING, ONCE THE MICROSURFACING HAS CURED, PLACE SHORT TERM PAVEMENT MARKING TYPE I MARKING (TAPE).
3. WITHIN THREE DAYS AFTER MICROSURFACING IS CONSTRUCTED TEMPORARY PAVEMENT MARKING SHALL BE PLACED. THIS SHALL BE PAINT. TAPE WILL NOT BE ALLOWED FOR THE TEMPORARY PAVEMENT MARKING.
4. A MINIMUM OF 30 DAYS LATER PAINT PAVEMENT MARKING, 4" SHALL BE PLACED.

INDEX OF SHEETS

SHEET NO.	ITEM
1	COVER SHEET
2	GENERAL NOTES & INDEX OF SHEETS
3	SUMMARY OF QUANTITIES
4	TYPICAL SECTIONS
5	SCHEDULE OF QUANTITIES
6-10	PLAN SHEETS
11-14	PAVEMENT MARKING DETAILS

THE FOLLOWING STANDARDS ARE A PART OF THESE PLANS AND ARE INCLUDED FOLLOWING THE LAST NUMBERED SHEET OF THE PLANS.

701001-02	OFF-ROAD OPERATIONS, 2L, 2W, MORE THAN 15' AWAY
701006-05	OFF-ROAD OPERATIONS, 2L, 2W, 15' TO 24" FROM PAVEMENT EDGE
701201-05	LANE CLOSURE, 2L, 2W, DAY ONLY, FOR SPEEDS >= 45 MPH
701301-04	LANE CLOSURE, 2L, 2W, SHORT TIME OPERATIONS
701306-04	LANE CLOSURE, 2L, 2W, SLOW MOVING OPERATIONS DAY ONLY, FOR SPEEDS >= 45 MPH
701311-03	LANE CLOSURE, 2L, 2W, MOVING OPERATIONS - DAY ONLY
701501-06	URBAN LANE CLOSURE, 2L, 2W, UNDIVIDED
701701-10	URBAN LANE CLOSURE, MULTILANE INTERSECTION
701901-08	TRAFFIC CONTROL DEVICES
780001-05	TYPICAL PAVEMENT MARKINGS
781001-04	TYPICAL APPLICATIONS RAISED REFLECTIVE PAVEMENT MARKERS

• FAS 1652, FAU 8379

MODEL: Default
FILE: \\blm1c01.pw.state.il.us\blm1c01\Projects\74971\CADD\Drawings\DOT_Offices\Drawings\74971-14-11-2020.dwg

USER NAME = steffenmk	DESIGNED -	REVISED -
	DRAWN -	REVISED -
PLOT SCALE = 100.0000' / in.	CHECKED -	REVISED -
PLOT DATE = 3/30/2020	DATE -	REVISED -

**STATE OF ILLINOIS
DEPARTMENT OF TRANSPORTATION**

GENERAL NOTES & INDEX OF SHEETS

SCALE: SHEET OF SHEETS STA. TO STA.

F.A.S. RTE.	SECTION	COUNTY	TOTAL SHEETS	SHEET NO.
*	(12, 13)PVMT PRSV	EFFINGHAM	14	2
CONTRACT NO. 74971				
			ILLINOIS	FED. AID PROJECT

80% FED 20% STATE

80% FED 20% STATE

SUMMARY OF QUANTITIES			TOTAL QUANTITIES	CONSTRUCTION TYPE CODE	
CODE NO	ITEM	UNIT		0005 URBAN	0005 RURAL
40500061	CAPE SEAL, TYPE II	SO YD	80262	25306	54956
67100100	MOBILIZATION	L SUM	1	0.34	0.66
70100450	TRAFFIC CONTROL AND PROTECTION, STANDARD 701201	L SUM	1	0.34	0.66
70100460	TRAFFIC CONTROL AND PROTECTION, STANDARD 701306	L SUM	1	0.34	0.66
70102620	TRAFFIC CONTROL AND PROTECTION, STANDARD 701501	L SUM	1	0.34	0.66
70102635	TRAFFIC CONTROL AND PROTECTION, STANDARD 701701	L SUM	1	0.34	0.66
70107025	CHANGEABLE MESSAGE SIGN	CAL DA	28	14	14
70300100	SHORT TERM PAVEMENT MARKING	FOOT	5045	1704	3341
70300150	SHORT TERM PAVEMENT MARKING REMOVAL	SO FT	841	284	557
70300220	TEMPORARY PAVEMENT MARKING - LINE 4"	FOOT	59612	17303	42309
* 78000100	THERMOPLASTIC PAVEMENT MARKING - LETTERS AND SYMBOLS	SO FT	47	47	0
* 78000200	THERMOPLASTIC PAVEMENT MARKING - LINE 4"	FOOT	5211	5211	0

SUMMARY OF QUANTITIES			TOTAL QUANTITIES	CONSTRUCTION TYPE CODE	
CODE NO	ITEM	UNIT		0005 URBAN	0005 RURAL
* 78000600	THERMOPLASTIC PAVEMENT MARKING - LINE 12"	FOOT	115	115	0
* 78000650	THERMOPLASTIC PAVEMENT MARKING - LINE 24"	FOOT	25	25	0
* 78001110	PAINT PAVEMENT MARKING - LINE 4"	FOOT	59609	17303	42306
* 78100100	RAISED REFLECTIVE PAVEMENT MARKER	EACH	336	127	209
78300200	RAISED REFLECTIVE PAVEMENT MARKER REMOVAL	EACH	336	127	209
X0327980	PAVEMENT MARKING REMOVAL - WATER BLASTING	SO FT	1830	1830	0
Z0033650	LONGITUDINAL JOINT REPAIR	TON	1.2	0.5	0.7
Z0049799	PROTECTING OR RESETTING SURVEY MARKERS	EACH	9	0	9

* SPECIALTY ITEM

* FAS 1652, FAU 8379

REV. - MS

MODEL: Default
FILE NAME: p:\pub\barcom.dwg
USER: steffennk
DESIGNED -
DRAWN -
CHECKED -
DATE -
PLOT SCALE = 100.0000' / in.
PLOT DATE = 3/27/2020

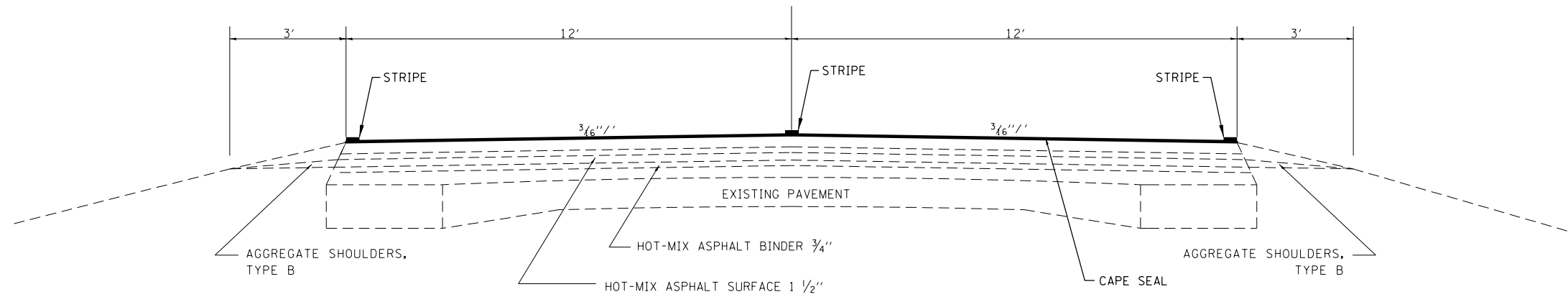
USER NAME = steffennk	DESIGNED -	REVISED -
	DRAWN -	REVISED -
PLOT SCALE = 100.0000' / in.	CHECKED -	REVISED -
PLOT DATE = 3/27/2020	DATE -	REVISED -

STATE OF ILLINOIS
DEPARTMENT OF TRANSPORTATION

SUMMARY OF QUANTITIES

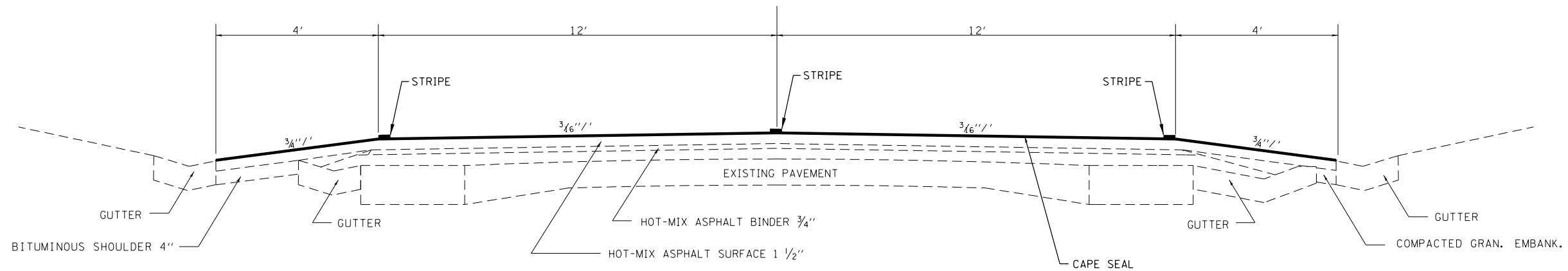
SCALE: SHEET OF SHEETS STA. TO STA.

F.A.S. RTE.	SECTION	COUNTY	TOTAL SHEETS	SHEET NO.
*	(12, 13)PVMT PRSV	EFFINGHAM	14	3
CONTRACT NO. 74971			ILLINOIS FED. AID PROJECT	



TYPICAL SECTION

STA 76+75 TO STA 250+81
 STA 259+08 TO STA 260+34 (LT SIDE ONLY)
 STA 260+34 TO STA 263+20
 STA 263+20 TO STA 267+37 (LT SIDE ONLY)
 STA 272+50 TO STA 274+75 (RT SIDE ONLY)
 STA 274+75 TO STA 339+67



TYPICAL SECTION

STA 250+81 TO STA 259+08
 STA 259+08 TO STA 260+34 (RT SIDE ONLY)
 STA 263+20 TO STA 267+37 (RT SIDE ONLY)
 STA 267+37 TO STA 272+50
 STA 272+50 TO STA 274+75 (LT SIDE ONLY)

• FAS 1652, FAU 8379

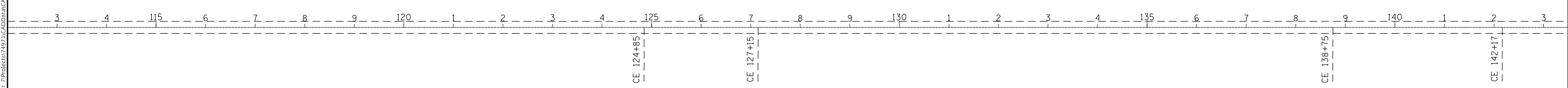
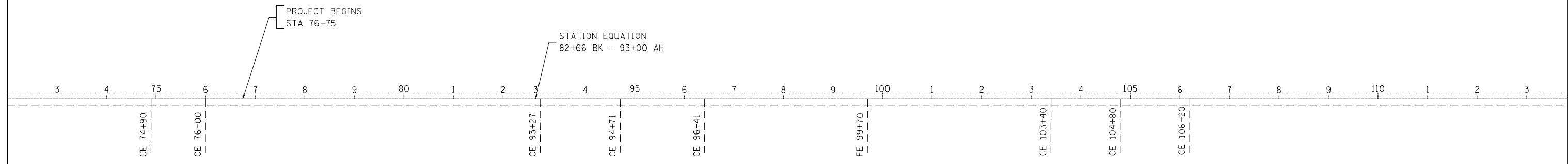
MODEL: Default
 FILE: Model: Pavement.dwg
 PROJECT: 74971\CAD\Drawings\DOT_Offices\Drawings\74971-Subtypical.dwg

USER NAME = steffemk	DESIGNED -	REVISED -
	DRAWN -	REVISED -
PLOT SCALE = 100,0000' / in.	CHECKED -	REVISED -
PLOT DATE = 3/27/2020	DATE -	REVISED -

**STATE OF ILLINOIS
 DEPARTMENT OF TRANSPORTATION**

TYPICAL SECTION	
SCALE:	SHEET OF SHEETS STA. TO STA.

F.A.S. RTE.	SECTION	COUNTY	TOTAL SHEETS	SHEET NO.
-	(12, 13) PVMT PRSV	EFFINGHAM	14	4
CONTRACT NO. 74971				
ILLINOIS FED. AID PROJECT				



MODEL: Default
 FILE: h:\m\c_p\pub\h\room\dat\illinois.gov\RWIDOT\Documents\IDOT_Offices\IDOT\74971\cadd\data\CAD\sheet\74971-shc.dwg

• FAS 1652, FAU 8379 (US 45)

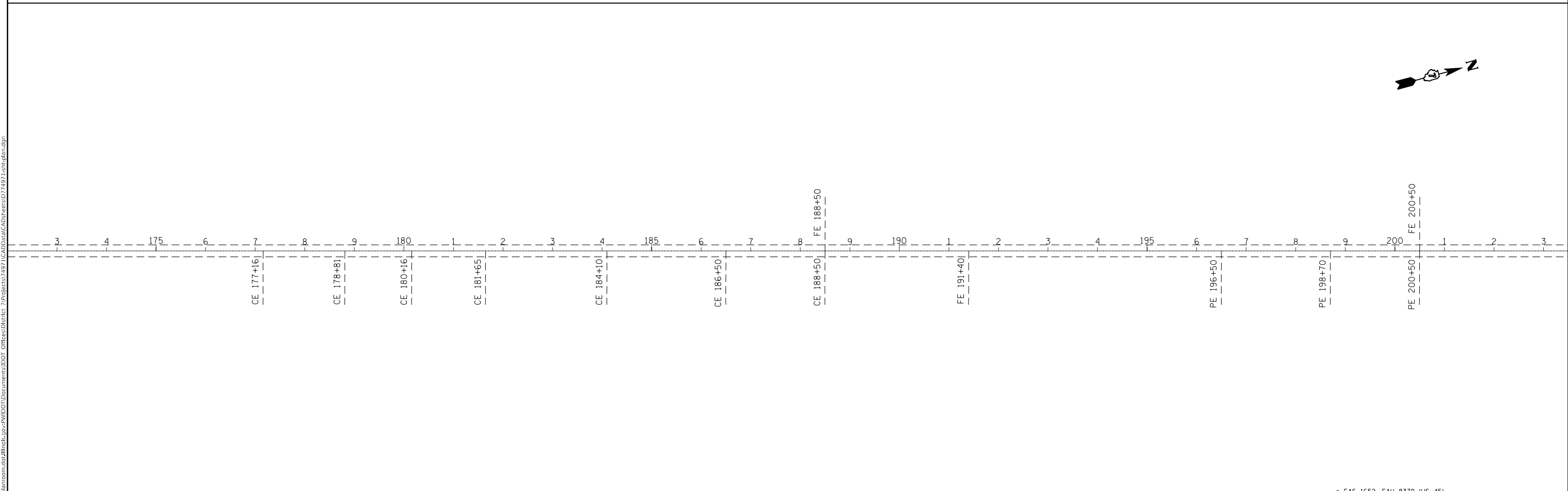
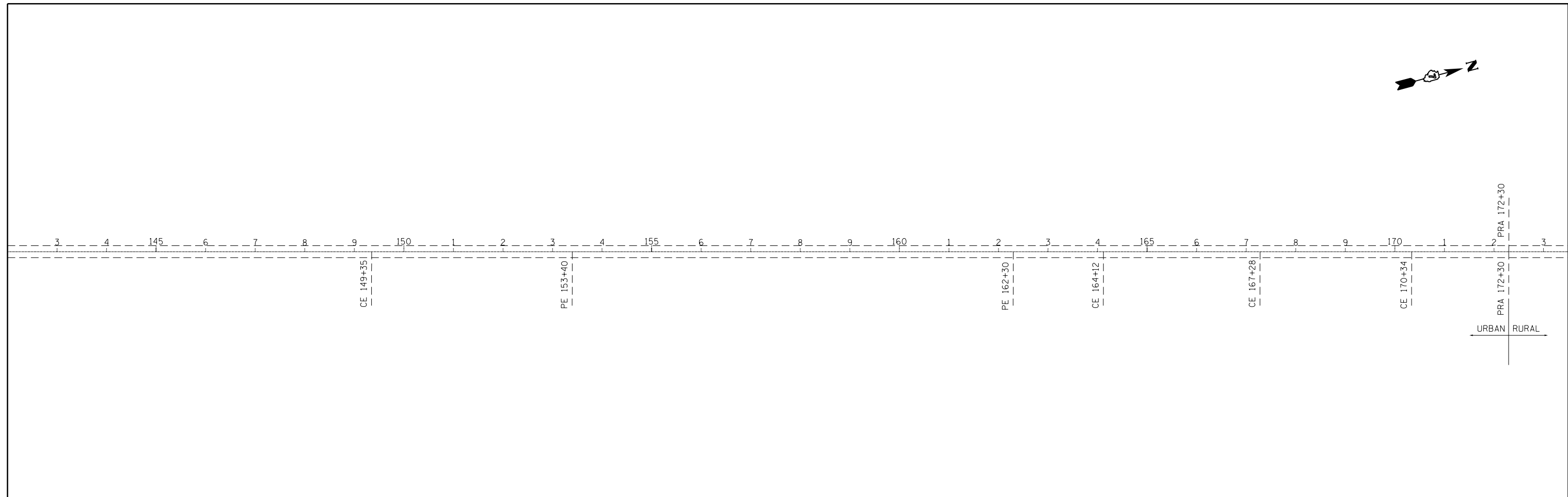
USER NAME = steffenmk	DESIGNED -	REVISED -
	DRAWN -	REVISED -
PLOT SCALE = 200.0000 ' / in.	CHECKED -	REVISED -
PLOT DATE = 3/27/2020	DATE -	REVISED -

STATE OF ILLINOIS
DEPARTMENT OF TRANSPORTATION

PLAN SHEET
STA 73+00 TO STA 143+00

SCALE: SHEET OF SHEETS STA. TO STA.

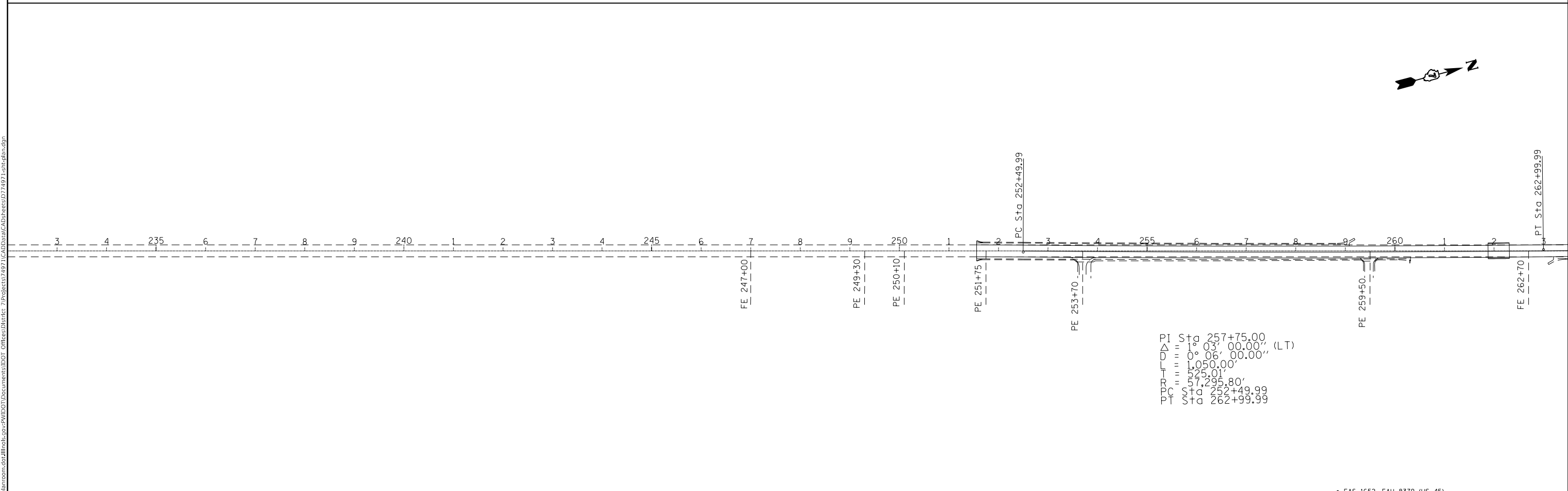
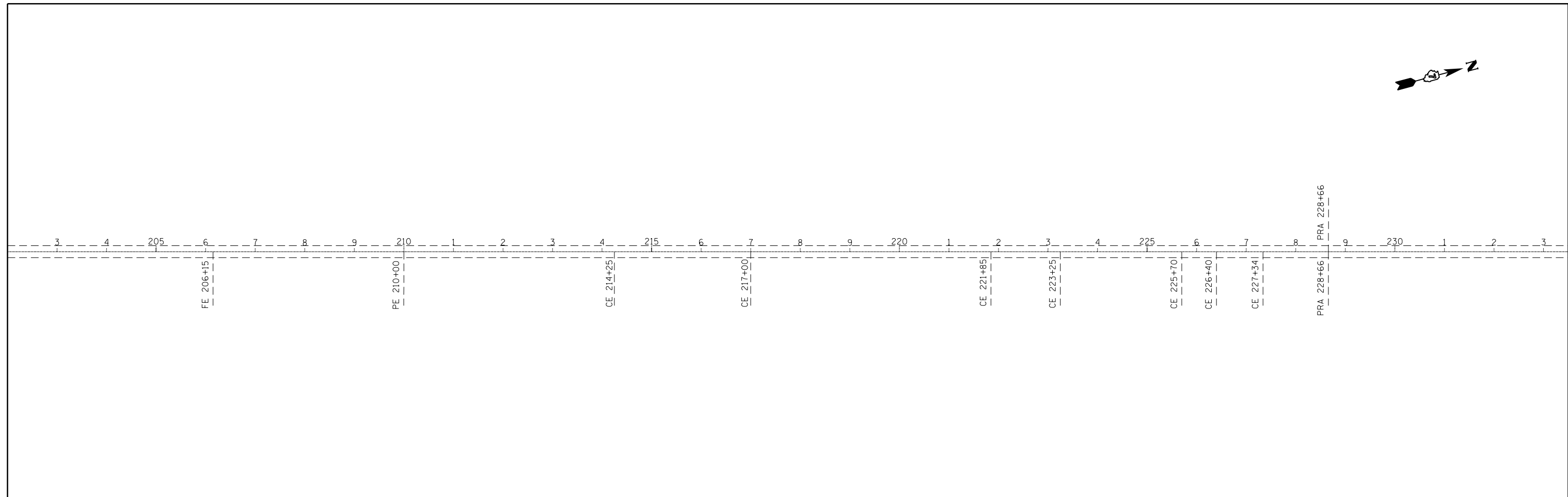
F.A.S. RTE.	SECTION	COUNTY	TOTAL SHEETS	SHEET NO.
*	(12, 13) PVMT PRSV	EFFINGHAM	14	6
CONTRACT NO. 74971				
ILLINOIS		FED. AID PROJECT		



MODEL: Default
 FILE: h:\m\c_p\pub\planroom.dwg
 PROJECT: 74971\ICAD\DATA\CAD\sheet\174971-shc-plan.dgn
 OFFICE: IDOT
 DATE: 3/27/2020

• FAS 1652, FAU 8379 (US 45)

USER NAME = steffemk PLOT SCALE = 200,0000' / in. PLOT DATE = 3/27/2020	DESIGNED -	REVISED -	STATE OF ILLINOIS DEPARTMENT OF TRANSPORTATION	PLAN SHEETS STA 143+00 TO STA 203+00			F.A.S. RTE.	SECTION	COUNTY	TOTAL SHEETS	SHEET NO.
	DRAWN -	REVISED -		SCALE:	SHEET	OF	SHEETS	STA.	TO	STA.	
	CHECKED -	REVISED -					*	(12, 13) PVMT PRSV	EFFINGHAM	14	7
	DATE -	REVISED -								CONTRACT NO. 74971	
							ILLINOIS			FED. AID PROJECT	



MODEL: Default
 FILE: \\blm1c2.pw.usplanning.com\data\illinois.gov\PWIDOT\Documents\DOT_Offices\District 7\Projects\74971\CAD\data\CAD\Drawings\74971-std-plan.dgn

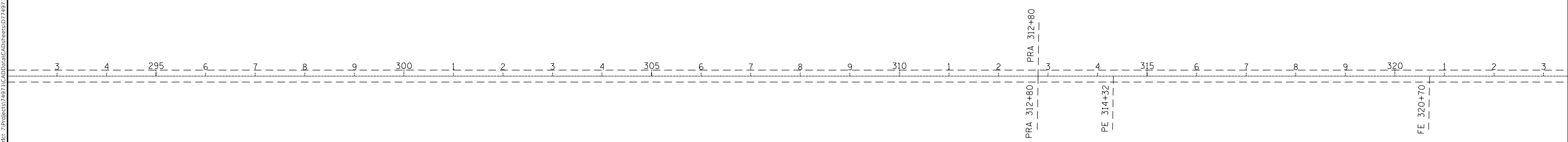
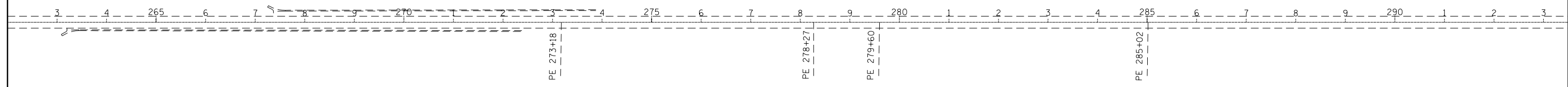
• FAS 1652, FAU 8379 (US 45)

USER NAME = steffemk	DESIGNED -	REVISED -
	DRAWN -	REVISED -
PLOT SCALE = 200.0000 ' / in.	CHECKED -	REVISED -
PLOT DATE = 3/27/2020	DATE -	REVISED -

STATE OF ILLINOIS
DEPARTMENT OF TRANSPORTATION

PLAN SHEETS			
STA 203+00 TO STA 263+00			
SCALE:	SHEET	OF SHEETS	STA. TO STA.

F.A.S. RTE.	SECTION	COUNTY	TOTAL SHEETS	SHEET NO.
12	13	PVMT PRSV	EFFINGHAM 14	8
			CONTRACT NO. 74971	
		ILLINOIS	FED. AID PROJECT	



MODEL: Default
 FILE: \\blm1c2.pw.usplanning.com\data\illinois.gov\PW\DOT\Documents\DOT_Offices\District 7\Projects\74971\CADD\data\CAD\Sheets\ID74971-shc-plan.dgn

• FAS 1652, FAU 8379 (US 45)

USER NAME = steffenmk	DESIGNED -	REVISED -
	DRAWN -	REVISED -
PLOT SCALE = 200.0000 ' / in.	CHECKED -	REVISED -
PLOT DATE = 3/27/2020	DATE -	REVISED -

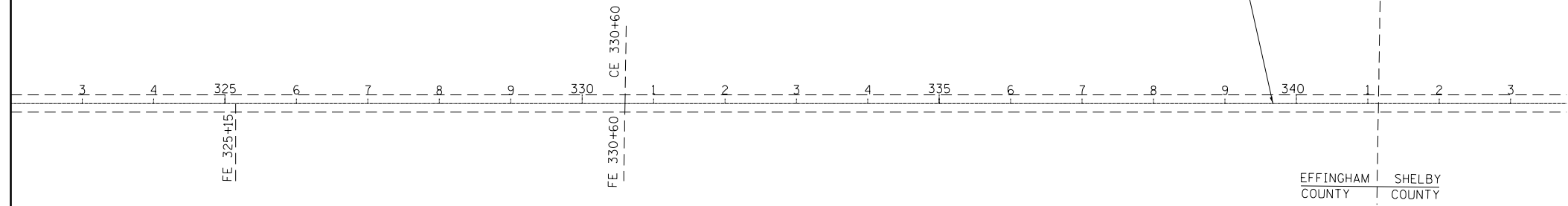
STATE OF ILLINOIS
DEPARTMENT OF TRANSPORTATION

PLAN SHEETS STA 263+00 TO STA 323+00			
SCALE:	SHEET	OF SHEETS	STA. TO STA.

F.A.S. RTE.	SECTION	COUNTY	TOTAL SHEETS	SHEET NO.
*	(12, 13) PVMT PRSV	EFFINGHAM	14	9
CONTRACT NO. 74971				
ILLINOIS		FED. AID PROJECT		



PROJECT ENDS
STA 339+67



MODEL: Default
 FILE: \\nas101.pw.state.il.us\pub\p1652\proj\74971\CADD\Drawings\DOT_Offices\Drawings\74971\CD\Drawings\74971-14-10-20.dwg

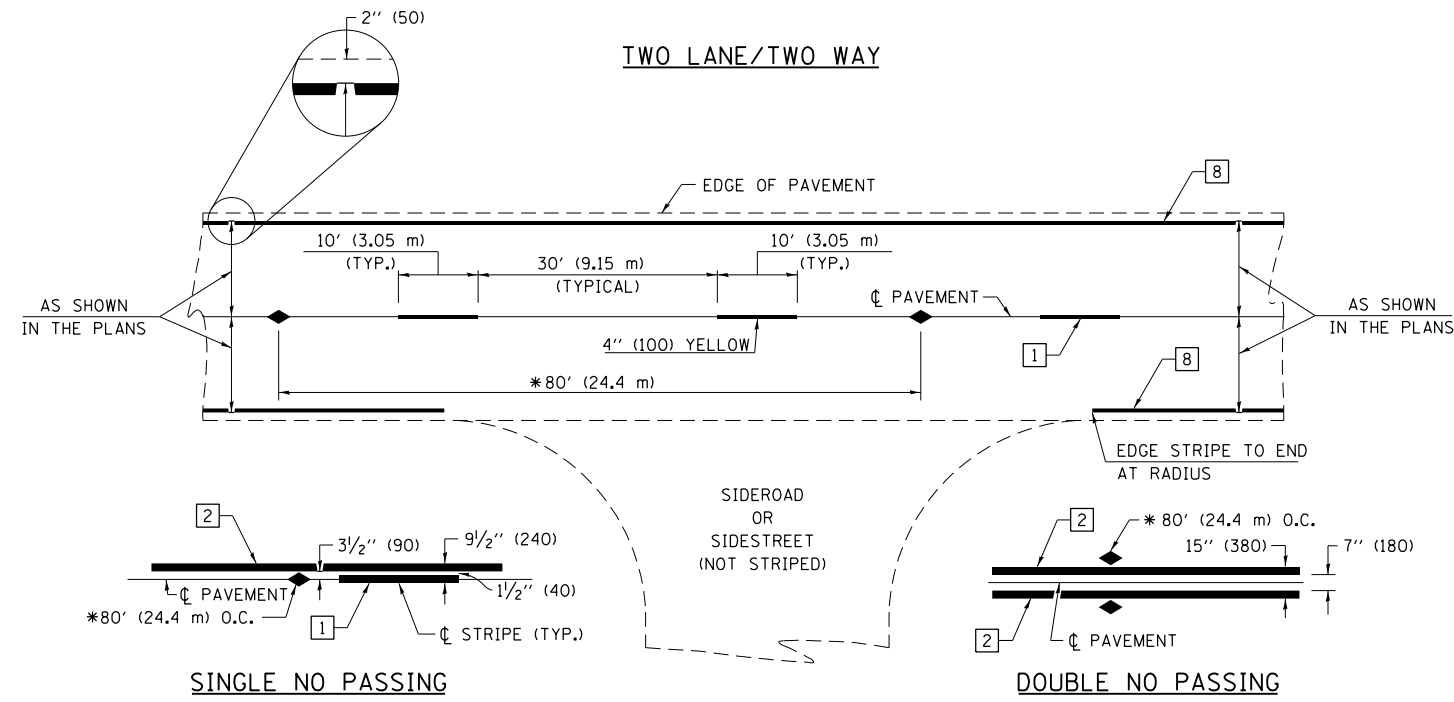
• FAS 1652, FAU 8379 (US 45)

USER NAME = steffenmk	DESIGNED -	REVISED -
	DRAWN -	REVISED -
PLOT SCALE = 200,0000 ' / in.	CHECKED -	REVISED -
PLOT DATE = 3/27/2020	DATE -	REVISED -

**STATE OF ILLINOIS
DEPARTMENT OF TRANSPORTATION**

PLAN SHEETS			
STA 323+00 TO STA 343+00			
SCALE:	SHEET	OF	SHEETS
	STA.	TO	STA.

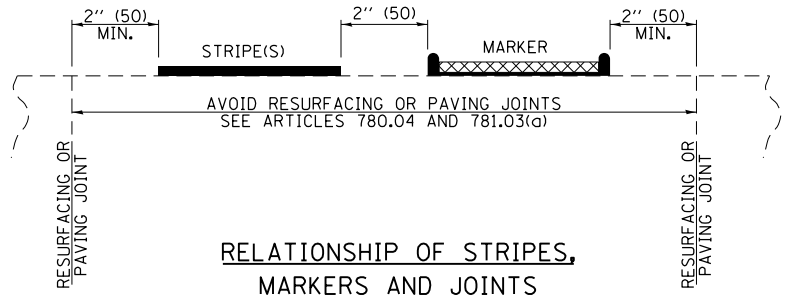
F.A.S. RTE.	SECTION	COUNTY	TOTAL SHEETS	SHEET NO.
*	(12, 13) PVMT PRSV	EFFINGHAM	14	10
CONTRACT NO. 74971			ILLINOIS FED. AID PROJECT	



* REDUCE TO 40' (12.2 m) O.C. ON CURVES WITH POSTED OR ADVISORY SPEEDS OF 45 mph (70 km/h) OR LESS.

PAVEMENT MARKING LEGEND

- 1 4" (100) SKIP-DASH (YELLOW)
- 2 4" (100) SOLID (YELLOW)
- 3 12" (300) DIAGONAL (YELLOW)
- 4 4" (100) DOUBLE YELLOW (NARROW)
- 5 12" (300) SOLID WHITE
- 6 RESERVED
- 7 6" (150) SKIP-DASH (WHITE)
- 8 4" (100) SOLID (WHITE)
- 9 12" (300) DIAGONAL (WHITE)
- 10 6" (150) SOLID (WHITE)
- 11 24" (600) STOP BAR (WHITE)
- 12 8" (200) SOLID (WHITE)
- 13 4" (100) PARKING WHITE

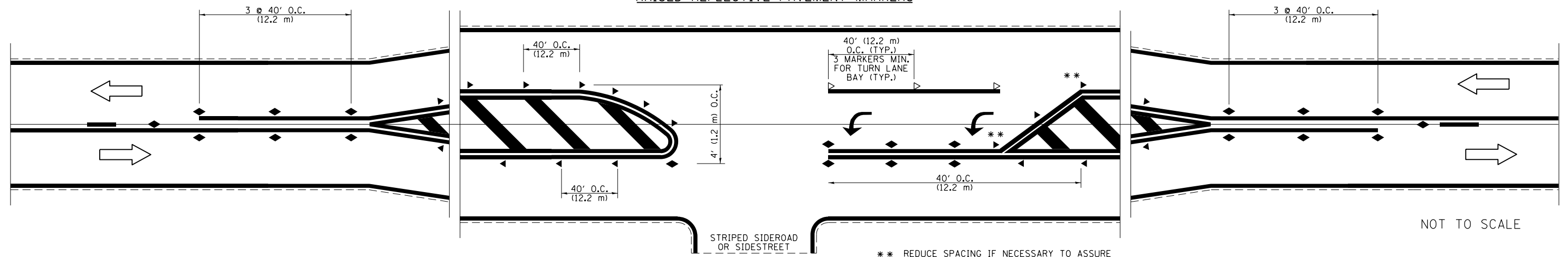


RELATIONSHIP OF STRIPES, MARKERS AND JOINTS

TYPICAL PAVEMENT MARKERS LEGEND

- ◆ TWO-WAY AMBER MARKER
- ▶ ONE-WAY AMBER MARKER
- ▷ ONE-WAY CRYSTAL MARKER

RAISED REFLECTIVE PAVEMENT MARKERS



NOT TO SCALE

FILE NAME =	USER NAME = steffennk	DESIGNED -	REVISED -
pw:\planroom.dot.illinois.gov\PIDOT\Documents\IDOT Offices\District 7\Projects\74971\CDRAWN\CADsheets\0774971-sht-details.dgn		REVISOR -	REVISED -
Default	PLOT SCALE = 100.0000' / in.	CHECKED -	REVISED -
	PLOT DATE = 3/27/2020	DATE -	REVISED -

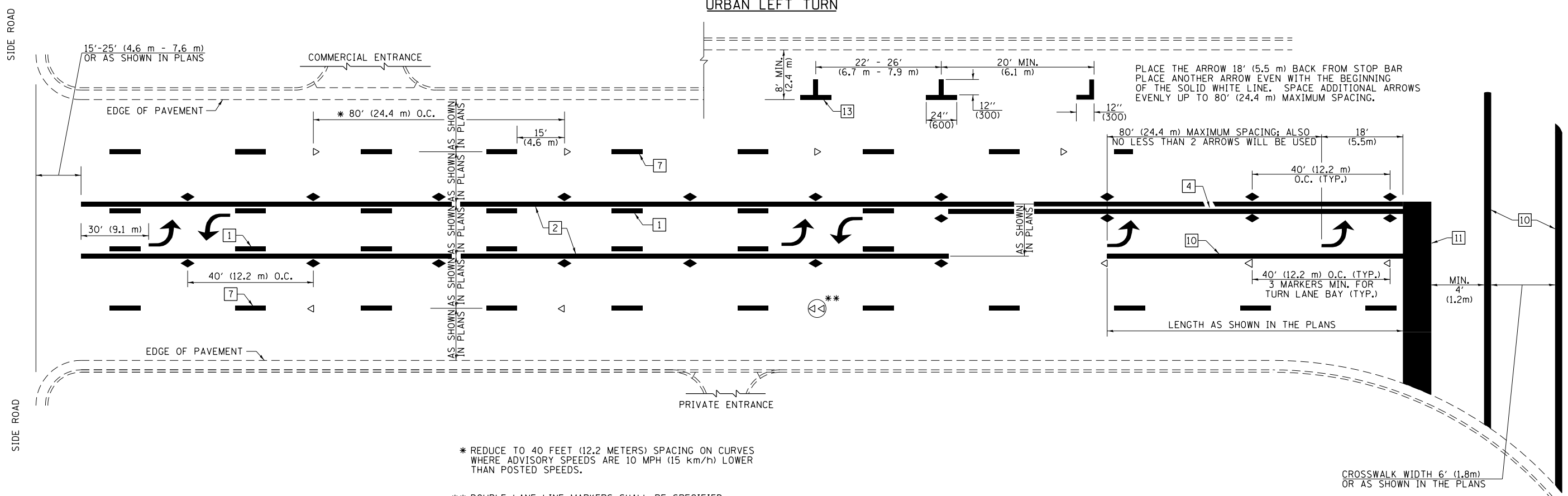
STATE OF ILLINOIS
DEPARTMENT OF TRANSPORTATION

PAVEMENT MARKING AND RAISED REFLECTIVE PAVEMENT MARKERS
(RURAL & URBAN APPLICATIONS)

SCALE: SHEET OF SHEETS STA. TO STA.

DISTRICT 7 DETAIL NO. 7800001				
F.A.S. RTE.	SECTION	COUNTY	TOTAL SHEETS	SHEET NO.
•	(12, 13)PVMT PRSV	EFFINGHAM	14	11
• FAS 1652, FAU 8379		CONTRACT NO. 74971		
ILLINOIS FED. AID PROJECT				

URBAN LEFT TURN



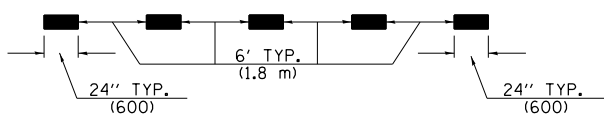
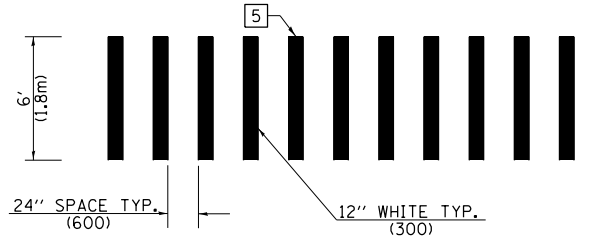
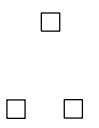
* REDUCE TO 40 FEET (12.2 METERS) SPACING ON CURVES WHERE ADVISORY SPEEDS ARE 10 MPH (15 km/h) LOWER THAN POSTED SPEEDS.

** DOUBLE LANE LINE MARKERS SHALL BE SPECIFIED AND SPACED AS SHOWN IN HIGHWAY STANDARD 781001 FOR MULTI-LANE DIVIDED AND UNDIVIDED HIGHWAYS.

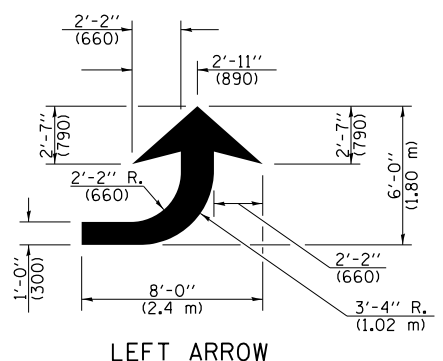
PAVEMENT MARKING LEGEND

- 1 4" (100) SKIP-DASH (YELLOW)
- 2 4" (100) SOLID (YELLOW)
- 3 12" (300) DIAGONAL (YELLOW)
- 4 4" (100) DOUBLE YELLOW (NARROW)
- 5 12" (300) SOLID WHITE
- 6 RESERVED
- 7 6" (150) SKIP-DASH (WHITE)
- 8 4" (100) SOLID (WHITE)
- 9 12" (300) DIAGONAL (WHITE)
- 10 6" (150) SOLID (WHITE)
- 11 24" (600) STOP BAR (WHITE)
- 12 8" (200) SOLID (WHITE)
- 13 4" (100) PARKING WHITE

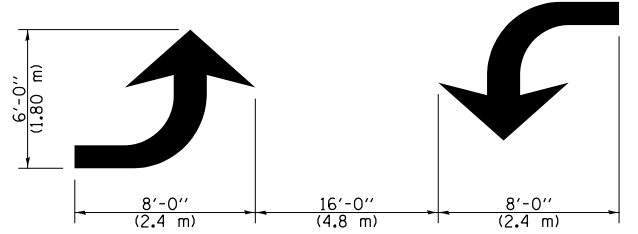
GENERAL NOTES



LANE LINE EXTENSIONS



LEFT ARROW



TYPICAL DOUBLE TURN ARROWS (WHITE)

NOT TO SCALE

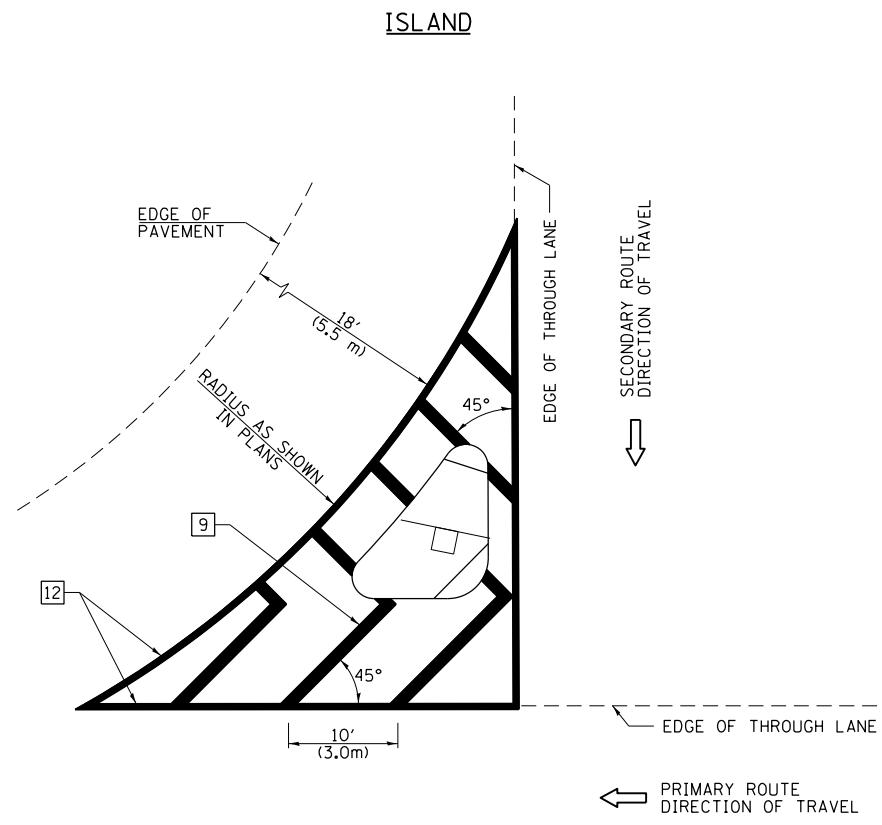
FILE NAME =	USER NAME = steffenmk	DESIGNED -	REVISED -
pw:\planroom.dot.illinois.gov\PIWIDOT\Documents\IDOT Offices\District 7\Projects\74971\CDRAW\CADsheets\0774971-sht-details.dgn		REVISION	REVISED -
Default	PLOT SCALE = 100.0000' / in.	CHECKED -	REVISED -
	PLOT DATE = 3/27/2020	DATE -	REVISED -

STATE OF ILLINOIS
DEPARTMENT OF TRANSPORTATION

PAVEMENT MARKING AND RAISED REFLECTIVE PAVEMENT MARKERS
(RURAL & URBAN APPLICATIONS)

SCALE: SHEET OF SHEETS STA. TO STA.

DISTRICT 7 DETAIL NO. 78000001				
F.A.S. RTE.	SECTION	COUNTY	TOTAL SHEETS	SHEET NO.
• FAS 1652, FAU 8379	(12, 13)PMVT PRSV	EFFINGHAM	14	12
			CONTRACT NO. 74971	
ILLINOIS FED. AID PROJECT				

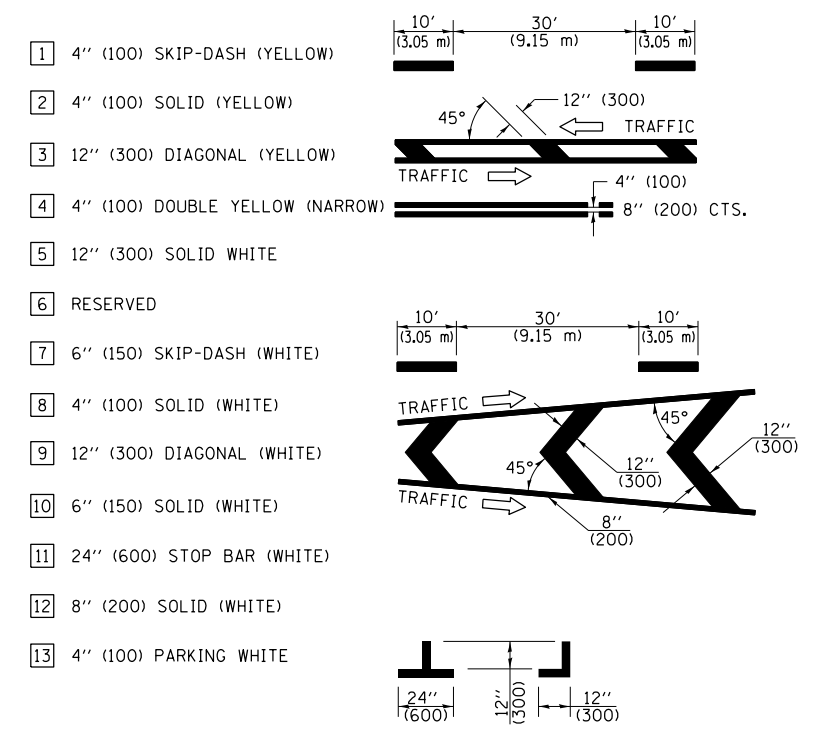


GENERAL NOTES

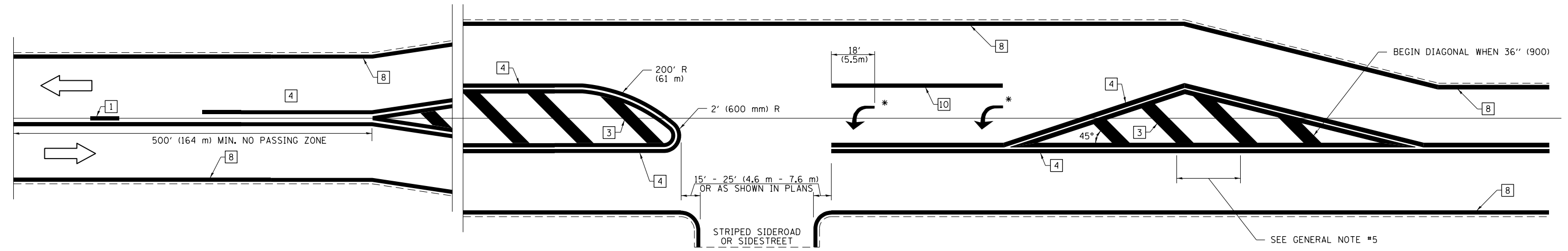
1. RAISED AND CORRUGATED MEDIANS SHALL BE OUTLINED WITH [2] IF PRESENT.
2. SOME OF THE INFORMATION INCLUDED WITH THIS DETAIL MAY NOT BE APPLICABLE TO THIS IMPROVEMENT.
3. PAVEMENT MARKINGS ARE TO BE EXTENDED THROUGH OMISSIONS WHEN APPLICABLE.
4. FINAL PAVEMENT MARKINGS SHALL BE IN PLACE PRIOR TO PLACING ANY RAISED REFLECTIVE PAVEMENT MARKERS.
5. THE FOLLOWING CRITERIA SHALL BE USED FOR SELECTING THE DIAGONAL PAVEMENT MARKING SPACING:

< 30 MPH (< 50 km/h)	15' (4.5 m)
30-45 MPH (50-75 km/h)	20' (6.0 m)
> 45 MPH (> 75 km/h)	30' (9.0 m)

PAVEMENT MARKING LEGEND



RURAL LEFT TURN STRIPING



* PLACE AN ARROW 18' (5.5 m) BACK FROM STOP BAR. PLACE ANOTHER ARROW EVEN WITH THE BEGINNING OF THE SOLID WHITE LINE. SPACE ADDITIONAL ARROWS EVENLY UP TO 80' (24.4 m) MAXIMUM SPACING. USE MINIMUM OF 2 ARROWS.

NOT TO SCALE

FILE NAME =	USER NAME = steffenmk	DESIGNED -	REVISED -
pw:\planroom.dot.illinois.gov\PIDOT\Documents\IDOT Offices\District 7\Projects\74971\CAD\Drawings\74971-sht-details.dgn		REVISION	REVISION
Default	PLOT SCALE = 100.0000' / in.	CHECKED -	REVISED -
	PLOT DATE = 3/27/2020	DATE -	REVISED -

**STATE OF ILLINOIS
DEPARTMENT OF TRANSPORTATION**

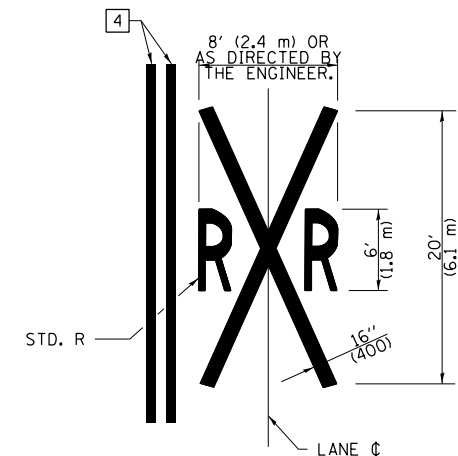
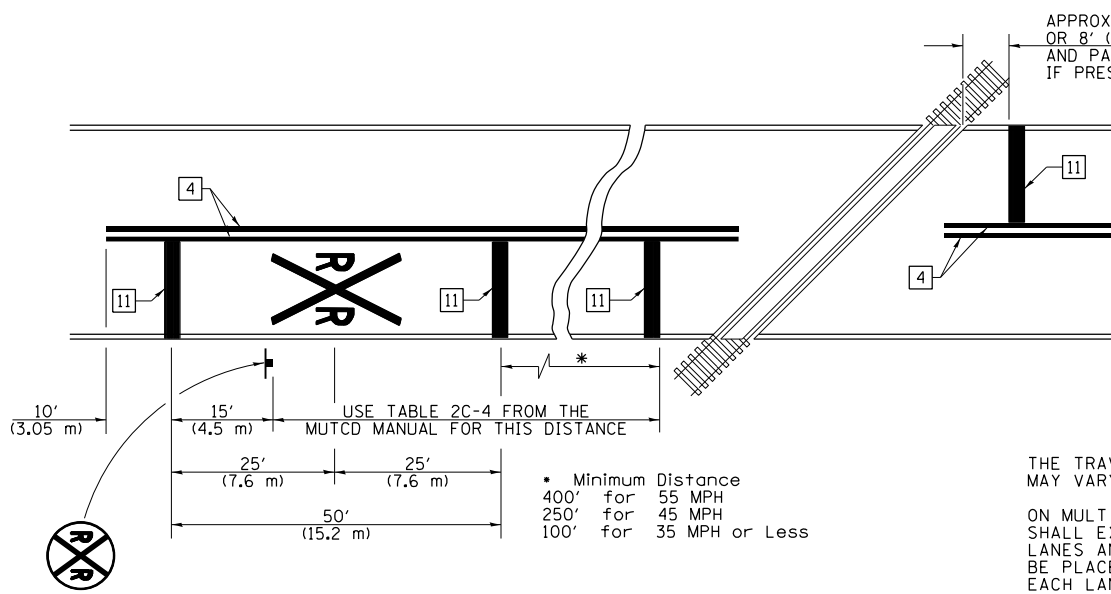
**PAVEMENT MARKING AND RAISED REFLECTIVE PAVEMENT MARKERS
(RURAL & URBAN APPLICATIONS)**

SCALE: SHEET OF SHEETS STA. TO STA.

DISTRICT 7 DETAIL NO. 7800001				
F.A.S. RTE.	SECTION	COUNTY	TOTAL SHEETS	SHEET NO.
	(12, 13)PVMT PRSV	EFFINGHAM	14	13
	FAS 1652, FAU 8379	CONTRACT NO. 74971		
ILLINOIS FED. AID PROJECT				

PAVEMENT MARKINGS AT RAILROAD-HIGHWAY GRADE CROSSING

PAVEMENT MARKING LEGEND



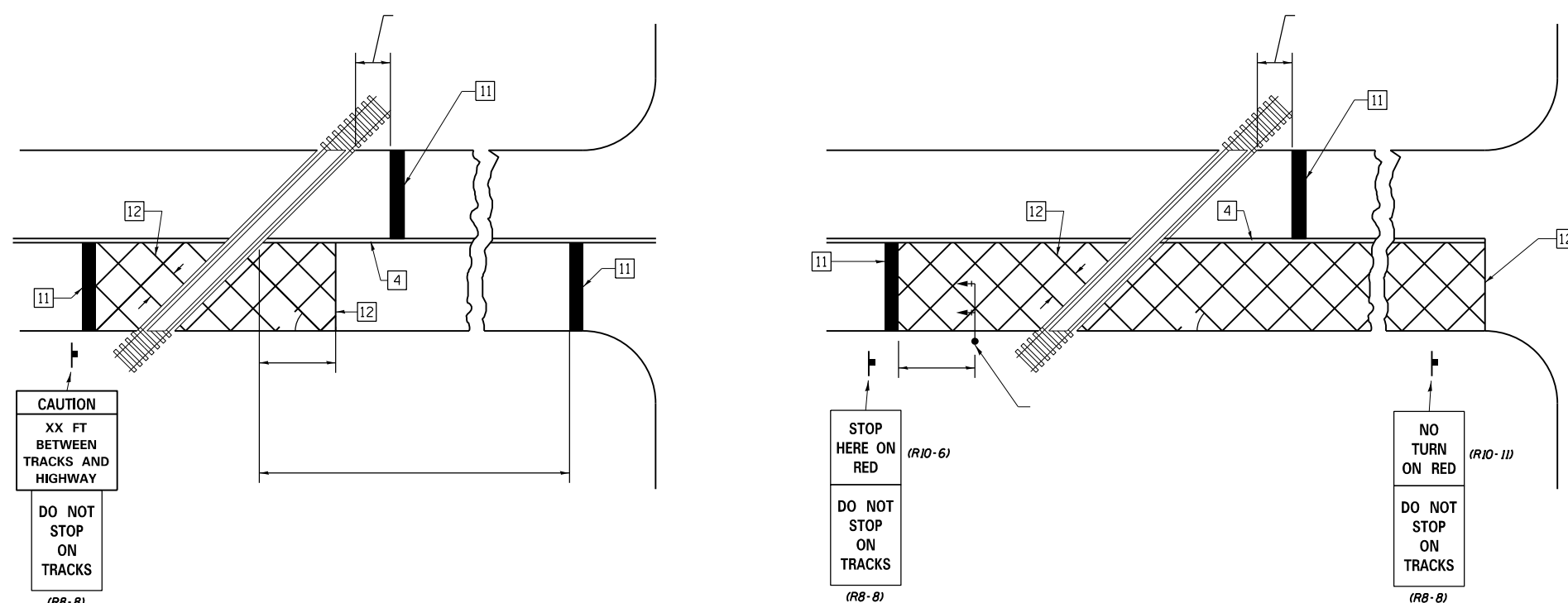
NOTES

THE TRAVERSE SPREAD OF THE "X" MAY VARY ACCORDING TO LANE WIDTH.

ON MULTI-LANE ROADS, THE STOP LINES SHALL EXTEND ACROSS ALL APPROACH LANES AND SEPARATE RXR SYMBOLS SHALL BE PLACED ADJACENT TO EACH OTHER IN EACH LANE.

WHEN THE PAVEMENT MARKING SYMBOL IS USED, A PORTION OF THE SYMBOL SHOULD BE LOCATED DIRECTLY ADJACENT TO THE ADVANCE WARNING SIGN (W10-1) AS PLACED BY TABLE II-1, CONDITION B OF THE MUTCD.

- 1 4" (100) SKIP-DASH (YELLOW)
- 2 4" (100) SOLID (YELLOW)
- 3 12" (300) DIAGONAL (YELLOW)
- 4 4" (100) DOUBLE YELLOW (NARROW)
- 5 12" (300) SOLID WHITE
- 6 RESERVED
- 7 6" (150) SKIP-DASH (WHITE)
- 8 4" (100) SOLID (WHITE)
- 9 12" (300) DIAGONAL (WHITE)
- 10 6" (150) SOLID (WHITE)
- 11 24" (600) STOP BAR (WHITE)
- 12 8" (200) SOLID (WHITE)
- 13 4" (100) PARKING WHITE



SUPPLEMENTAL PAVEMENT MARKING TREATMENT FOR RAILROAD-HIGHWAY GRADE CROSSING

GENERAL NOTES

- SUPPLEMENTAL PAVEMENT MARKINGS TO BE INSTALLED ONLY ON APPROACHES TO INTERSECTIONS CONTROLLED BY TRAFFIC SIGNALS WHICH ARE INTERCONNECTED WITH THE RAILROAD WARNING SIGNALS.
- EXTEND PAVEMENT MARKINGS TO THE INTERSECTION ONLY WHERE NEAR-SIDE TRAFFIC SIGNALS ARE USED.

NOT TO SCALE

FILE NAME =	USER NAME = steffenmk	DESIGNED -	REVISED -
p:\planroom.dot.illinois.gov\PIWIDOT\Documents\IDOT Offices\District 7\Projects\74971\CDRAW\CADsheets\0774971-sht-details.dgn		REVISION	REVISION
Default	PLOT SCALE = 100.0000' / in.	CHECKED -	REVISED -
	PLOT DATE = 3/27/2020	DATE -	REVISED -

STATE OF ILLINOIS
DEPARTMENT OF TRANSPORTATION

PAVEMENT MARKING AND RAISED REFLECTIVE PAVEMENT MARKERS
(RURAL & URBAN APPLICATIONS)

SCALE: SHEET OF SHEETS STA. TO STA.

DISTRICT 7 DETAIL NO. 78000001				
F.A.S. RTE.	SECTION	COUNTY	TOTAL SHEETS	SHEET NO.
• (12, 13)PVT PRSV		FAYETTE	14	14
• FAS 1652, FAU 8379			CONTRACT NO. 74971	
ILLINOIS FED. AID PROJECT				