

STATE OF ILLINOIS
DEPARTMENT OF TRANSPORTATION

F.A.P. RTE.	SECTION	COUNTY	TOTAL SHEETS	SHEET NO.
805	127,128PP-1	CLINTON	6	1
		ILLINOIS	CONTRACT NO. 76N56	

FOR INDEX OF SHEETS, SEE SHEET NO. 2

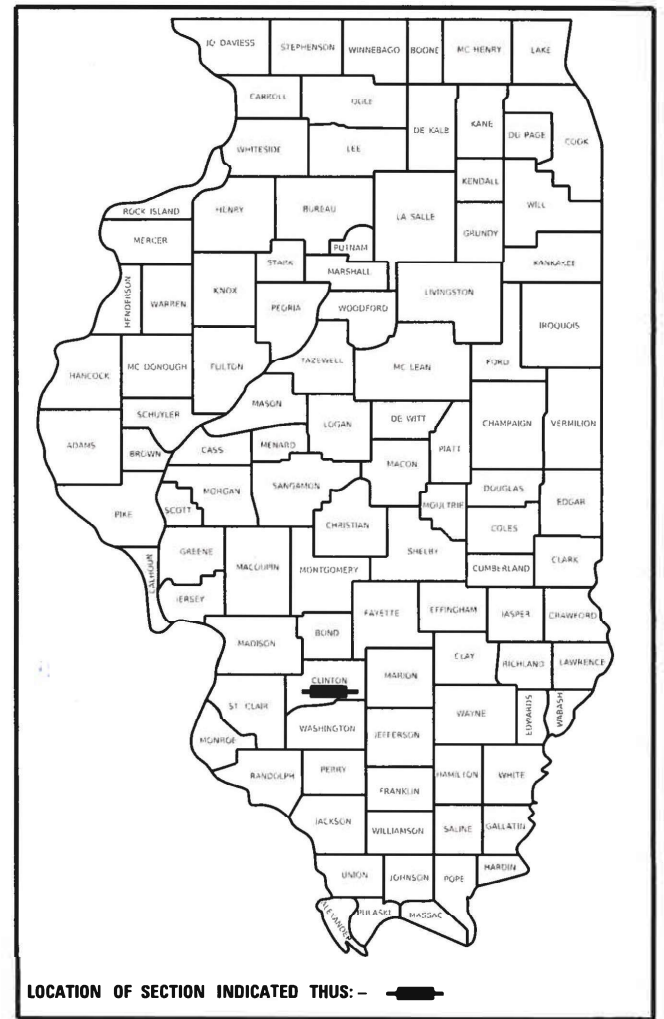
TRAFFIC DATA - FAP 805
ADT (2019) = 3350 (ACTUAL)
ADT (2020) = 3400 (ESTIMATED)
ADT (2040) = 3800 (ESTIMATED)
S.U. = 4.8%
M.U. = 4.5%

FUNCTIONAL CLASSIFICATION
MINOR ARTERIAL

PROPOSED HIGHWAY PLANS

FAP ROUTE 805 (IL 161)
SECTION 127,128PP-1
PATCHING
CLINTON COUNTY

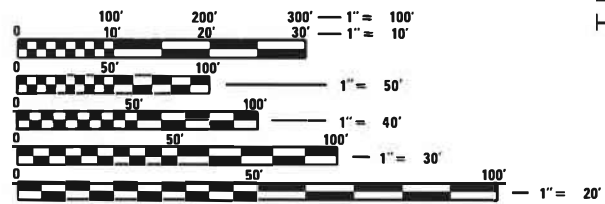
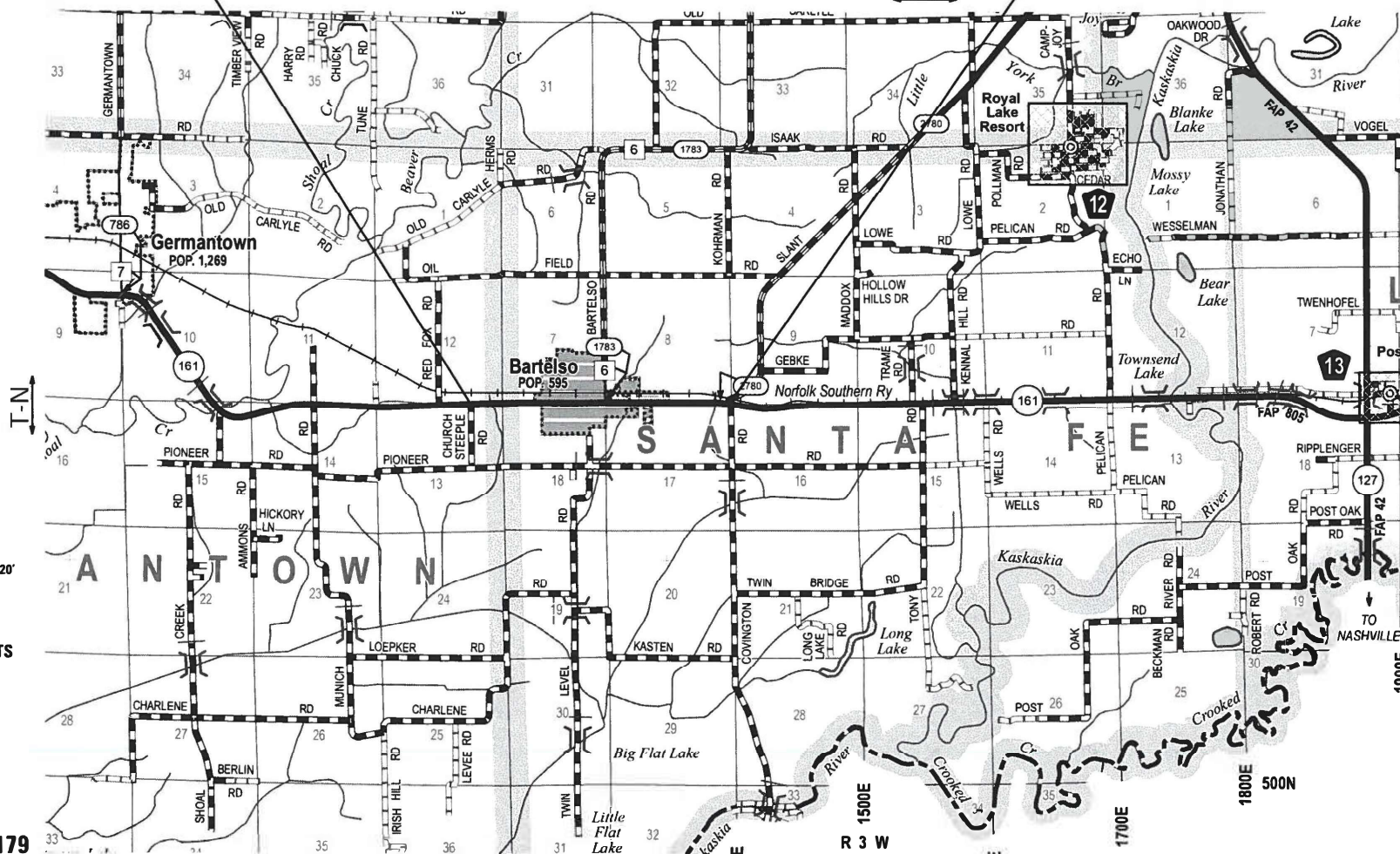
D-98-089-20



BEGIN PROJECT
STATION 5+00
LAT:38°32'10.77"N
LON:89°29'2.93"W

PROJECT END
STATION 109+30
LAT:38°32'10.71"N
LON:89°26'51.77"W

C-98-105-20



FULL SIZE PLANS HAVE BEEN PREPARED USING STANDARD ENGINEERING SCALES. REDUCED SIZED PLANS WILL NOT CONFORM TO STANDARD SCALES. IN MAKING MEASUREMENTS ON REDUCED PLANS, THE ABOVE SCALES MAY BE USED.

J.U.L.I.E.
JOINT UTILITY LOCATION INFORMATION FOR EXCAVATORS
1-800-892-0123
OR 811

PROJECT ENGINEER: HERVE GELIN, (618) 346-3179
PROJECT MANAGER: SAMUEL COLLINS, (618) 346-3145

GROSS LENGTH = 10430 FT. = 1.98 MILE
NET LENGTH = 10430 FT. = 1.98 MILE

CONTRACT NO. 76N56

STATE OF ILLINOIS
DEPARTMENT OF TRANSPORTATION

SUBMITTED March 20, 2020
K. Roberts REGIONAL ENGINEER

May 8, 2020 [Signature]
ENGINEER OF DESIGN AND ENVIRONMENT

May 8, 2020 [Signature]
DIRECTOR OF HIGHWAYS PROJECT IMPLEMENTATION

PRINTED BY THE AUTHORITY
OF THE STATE OF ILLINOIS

INDEX OF SHEETS:

- 1 COVER SHEET
- 2 INDEX OF SHEETS, GENERAL NOTES, HIGHWAY STANDARDS, AND COMMITMENTS
- 3 SUMMARY OF QUANTITIES
- 4 TYPICAL SECTIONS
- 5 SCHEDULE OF QUANTITIES
- 6 ROADWAY LAYOUT

HIGHWAY STANDARDS:

- 000001-07 STANDARD SYMBOLS, ABBREVIATIONS, AND PATTERNS
- 001006 DECIMAL OF A INCH AND FOOT
- 442201-03 CLASS C AND D PATCHES
- 701201-05 LANE CLOSURE, 2L, 2W, DAY ONLY, SPEEDS > 45MPH
- 701336-07 LANE CLOSURE, 2L, 2W, WORK AREA IN SERIES, FOR SPEEDS > 45 MPH
- 701501-06 URBAN LANE CLOSURE, 2L, 2W, UNDIVIDED
- 701901-08 TRAFFIC CONTROL DEVICES
- 781001-04 TYPICAL APPLICATIONS RAISED REFLECTIVE PAVEMENT MARKERS
- 780001-05 TYPICAL PAVEMENT MARKINGS

GENERAL NOTES:

- 1. LIMITED SURVEY WAS PERFORMED FOR THIS PROJECT. PLANS WERE MADE USING MICROFILM AND FIELD MEASUREMENTS.
- 2. FLAGGERS ARE REQUIRED AT ALL TIMES DURING PATCHING OPERATIONS.
- 3. THE FOLLOWING MIXTURE REQUIREMENTS ARE APPLICABLE FOR THIS PROJECT:

MIXTURE USE	PATCHING	
	BINDER	SURFACE
AC/PG	PG 64-22	PG 64-22
RAP% (MAX)	SEE SPECIAL PROV.	SEE SPECIAL PROV.
DESIGN AIR VOIDS	4.0% @ Ndes=70	4.0% @ Ndes=70
MIX COMPOSITION (GRADATION MIXTURE)	IL 19.0	IL 9.5
FRICITION AGG	MIXTURE "B"	MIXTURE "C"
QUALITY MGMT PROGRAM	QC/QA	QC/QA

COMMITMENTS:

NONE

REV. - MS

MODEL: SMODELNAMES
FILE NAME: SFILES

USER NAME = SUSERS	DESIGNED - _____	REVISED - _____	STATE OF ILLINOIS DEPARTMENT OF TRANSPORTATION	INDEX OF SHEETS, COMMITMENTS, GENERAL NOTES AND STANDARDS	F.A.P. RTE. 805	SECTION 127-128PP-1	COUNTY CLINTON	TOTAL SHEETS 6	SHEET NO. 2		
PLOT SCALE = S SCALES	CHECKED - _____	REVISED - _____			SCALE: NTS	SHEET 1 OF 1 SHEETS	STA. 5 + 00	TO STA. 109 + 30	CONTRACT NO. 76N56		
PLOT DATE = S DATES	DATE - _____	REVISED - _____			ILLINOIS FED. AID PROJECT						

RURAL
CONSTR. CODE
100% STATE
ROADWAY
0006
S.N.

CODE NO.	ITEM	UNIT	TOTAL QUANTITY	
44201789	CLASS D PATCHES, TYPE II, 12 INCH	SQ YD	842	842
44201794	CLASS D PATCHES, TYPE III, 12 INCH	SQ YD	242	242
44201796	CLASS D PATCHES, TYPE IV, 12 INCH	SQ YD	1379	1379
67100100	MOBILIZATION	L SUM	1	1
70100450	TRAFFIC CONTROL AND PROTECTION, STANDARD 701201	L SUM	1	1
70100600	TRAFFIC CONTROL AND PROTECTION, STANDARD 701336	L SUM	1	1
70102620	TRAFFIC CONTROL AND PROTECTION, STANDARD 701501	L SUM	1	1
*78001110	PAINT PAVEMENT MARKING - LINE 4"	FOOT	1796	1796
*78100100	RAISED REFLECTIVE PAVEMENT MARKER	EACH	12	12

* SPECIALTY ITEM

REV. - MS

MODEL: SMODEL\MANES
FILE NAME: SHELERS

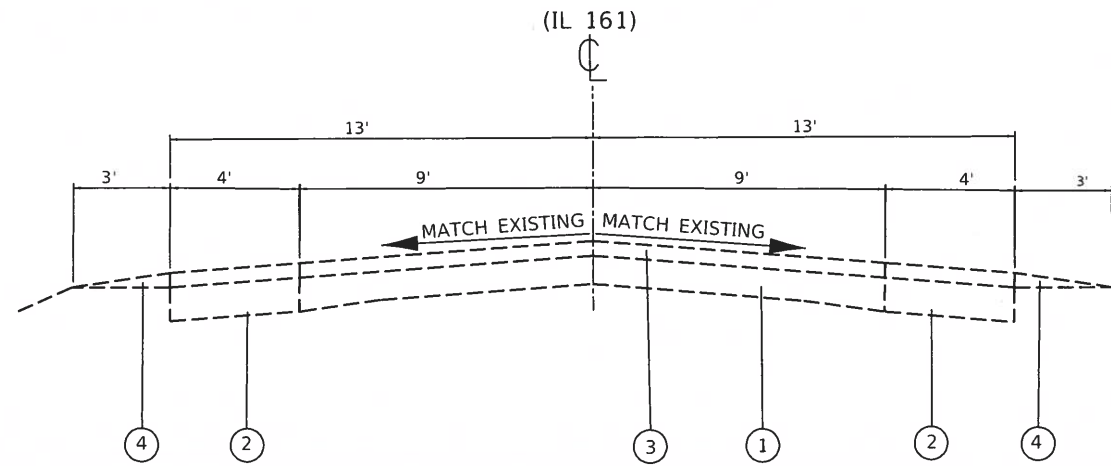
USER NAME = SUSER5	DESIGNED - _____	REVISED - _____
PLOT SCALE = SCALES	DRAWN - _____	REVISED - _____
PLOT DATE = SDATES	CHECKED - _____	REVISED - _____
	DATE - _____	REVISED - _____

STATE OF ILLINOIS
DEPARTMENT OF TRANSPORTATION

SUMMARY OF QUANTITIES

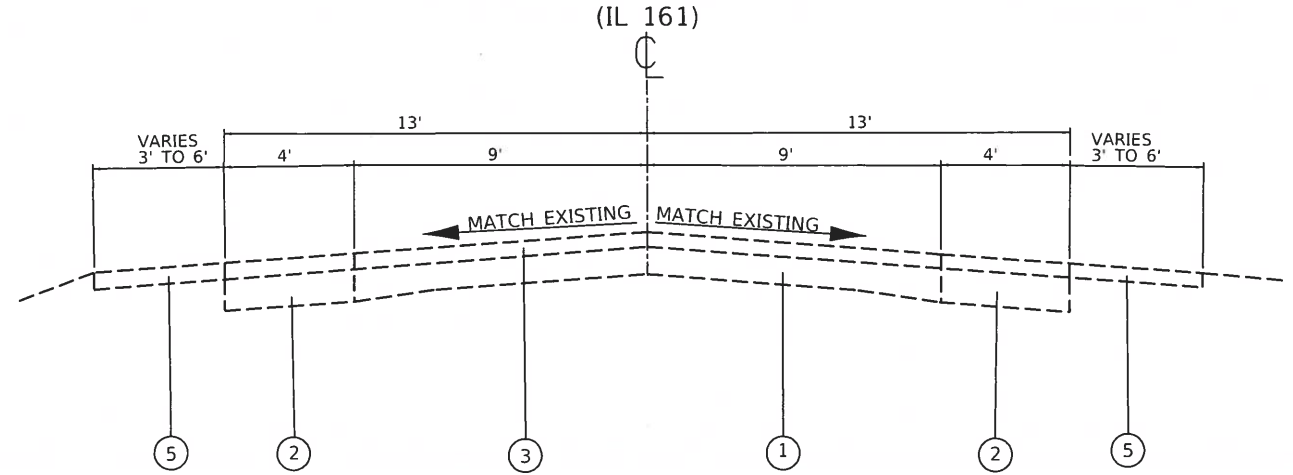
SCALE: NTS SHEET 1 OF 1 SHEETS STA. 5 + 00 TO STA. 109 + 30

F.A.P. RTE.	SECTION	COUNTY	TOTAL SHEETS	SHEET NO.
805	127.128PP-1	CLINTON	6	3
				CONTRACT NO. 76N56
ILLINOIS FED. AID PROJECT				



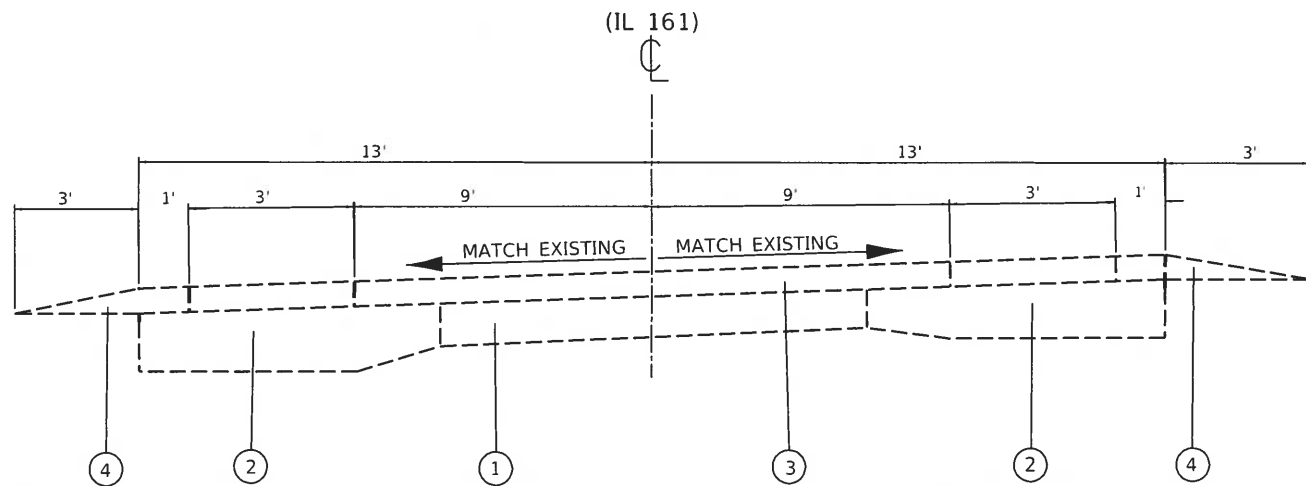
EXISTING TYPICAL SECTION

STA. 5+00 TO 38+48
STA. 61+45 TO 108+81



EXISTING TYPICAL SECTION

STA. 38+48 TO 61+45



EXISTING TYPICAL ELEVATED SECTION

STA. 108+81 TO 109+60

LEGEND

- ① EXISTING CONCRETE PAVEMENT (9"-7"-9")
- ② EXISTING HMA BASE COURSE WIDENING
- ③ EXISTING HMA RESURFACING 3"
- ④ EXISTING AGGREGATE SHOULDER
- ⑤ EXISTING BITUMINOUS COLD MIX

MODEL: \\MODELNAME\$
FILE NAME: \\P:\lanroom\dot\illinois.gov\FWIDOT\Documents\DOT - Offices\District 8\Projects\0876N56\CADD\Drawings\0876N56-shl-byrcr.dwg

USER NAME = Default	DESIGNED - _____	REVISED - _____
PLOT SCALE = 40.0376' / in.	DRAWN - _____	REVISED - _____
PLOT DATE = 3/4/2020	CHECKED - _____	REVISED - _____
	DATE - _____	REVISED - _____

**STATE OF ILLINOIS
DEPARTMENT OF TRANSPORTATION**

TYPICAL SECTIONS

SCALE: NTS SHEET 1 OF 1 SHEETS STA. 5 + 00 TO STA. 109 + 30

F.A.P. RTE.	SECTION	COUNTY	TOTAL SHEETS	SHEET NO.
805	127.128PP-1	CLINTON	6	4
CONTRACT NO. 76N56			ILLINOIS FED. AID PROJECT	

PATCHING SCHEDULE					
LOCATION	LENGTH FEET	WIDTH FEET	CLASS D PATCHES 12"		
			TYPE II	TYPE III	TYPE IV
			SQ YDS	SQ YDS	SQ YDS
EASTBOUND					
8+43	40	13			58
9+70	4	13	6		
10+07	4	13	6		
11+18	4	13	6		
15+09	4	13	6		
15+88	4	13	6		
16+41	4	13	6		
16+67	4	13	6		
16+78	4	13	6		
17+46	4	13	6		
17+73	4	13	6		
17+94	4	13	6		
18+31	4	13	6		
18+46	4	13	6		
19+42	20	13			29
19+84	4	13	6		
20+47	6	13	9		
20+89	6	13	9		
24+54	12	13		18	
25+49	20	13			29
26+33	50	13			73
27+86	4	13	6		
28+29	4	13	6		
28+87	4	13	6		
30+19	4	13	6		
32+03	4	13	6		
35+41	90	13			130
40+43	120	13			174
41+22	4	13	6		
47+40	40	4		18	
48+51	10	13	15		
55+74	4	13	6		
56+53	4	13	6		
57+27	4	13	6		
58+65	30	13			44
59+12	4	13	6		
59+23	4	13	6		
59+75	4	13	6		
60+07	4	13	6		
60+92	4	13	6		
61+97	6	13	9		
64+30	10	13	15		
68+57	10	13	15		
74+43	6	13	9		
74+86	6	13	9		
76+07	6	13	9		
80+72	16	13		24	
82+62	10	13	15		
85+94	8	13	12		
89+27	16	13		24	
89+27	16	13		24	
92+28	30	13			44
92+48	6	13	9		
93+49	6	13	9		
93+86	6	13	9		
95+13	4	13	6		
98+67	4	13	6		
99+14	4	13	6		
99+67	4	13	6		
102+21	100	13			145
103+63	4	13	6		
104+42	4	13	6		
105+32	4	13	6		
109+07	4	13	6		
SUB TOTAL			369	84	726

PATCHING SCHEDULE, CONTINUED					
LOCATION	LENGTH FEET	WIDTH FEET	CLASS D PATCHES 12"		
			TYPE II	TYPE III	TYPE IV
			SQ YDS	SQ YDS	SQ YDS
WESTBOUND					
8+43	16	13		24	
9+70	4	13	6		
10+07	4	13	6		
11+18	4	13	6		
15+09	4	13	6		
15+88	4	13	6		
16+41	4	13	6		
16+67	4	13	6		
16+78	4	13	6		
17+46	4	13	6		
17+73	4	13	6		
17+94	4	13	6		
18+31	4	13	6		
18+46	4	13	6		
19+42	20	13			29
19+84	4	13	6		
20+47	6	13	9		
20+89	6	13	9		
24+54	12	13		18	
25+49	20	13			29
27+86	4	13	6		
28+29	4	13	6		
28+87	4	13	6		
30+19	4	13	6		
32+03	4	13	6		
35+41	90	13			130
40+43	120	13			174
41+22	4	13	6		
47+40	40	4		18	
50+99	6	13	9		
55+74	4	13	6		
56+53	4	13	6		
57+27	4	13	6		
58+65	10	13	15		
59+12	4	13	6		
59+23	4	13	6		
59+75	4	13	6		
60+07	4	13	6		
60+92	4	13	6		
64+30	10	13	15		
68+57	10	13	15		
74+43	6	13	9		
74+86	6	13	9		
76+07	6	13	9		
80+72	16	13		24	
82+62	10	13	15		
85+94	8	13	12		
89+27	16	13		24	
92+28	12	13		18	
92+48	6	13	9		
93+49	6	13	9		
93+86	6	13	9		
95+13	4	13	6		
98+67	4	13	6		
99+14	4	13	6		
99+67	4	13	6		
101+84	100	6			67
102+21	30	13			44
104+42	4	13	6		
105+32	4	13	6		
109+07	4	13	6		
SUB TOTALS			363	126	473
SUB TOTALS, PREVIOUS COLUMN			369	84	726
ANTICIPATED FAILURES (15% TOTAL)			110	32	180
TOTAL			842	242	1379

PAVEMENT MARKING SCHEDULE			
LOCATION	PAINT PAVEMENT MARKING - LINE 4"		RAISED REFLECTIVE PAVEMENT MARKERS
	SOLID WHITE EDGE LINE	SKIP-DASH YELLOW	TWO-WAY AMBER
	FEET	FEET	EACH
8+43 TO 109+30			
		240	12
8+43	56		
9+70	8		
10+07	8		
11+18	8		
15+09	8		
15+58	8		
16+41	8		
16+67	8		
16+78	8		
17+46	8		
17+73	8		
17+94	8		
18+31	8		
18+46	8		
19+42	40		
19+84	8		
20+47	12		
20+89	12		
24+54	24		
25+49	40		
26+33	50		
27+86	8		
28+29	8		
28+87	8		
30+19	8		
32+03	8		
35+41	180		
40+43	240		
41+22	8		
47+40	80		
48+51	10		
50+99	6		
55+74	8		
56+53	8		
57+27	8		
58+65	40		
59+12	8		
59+23	8		
59+75	8		
60+07	8		
60+92	8		
61+97	6		
64+30	20		
68+57	20		
74+43	12		
74+86	12		
76+07	12		
80+72	32		
82+62	20		
85+94	16		
89+27	32		
92+28	42		
92+48	12		
93+49	12		
93+86	12		
95+13	8		
98+67	8		
99+14	8		
99+67	8		
101+84	100		
102+21	130		
103+63	4		
104+42	8		
105+32	8		
109+07	8		
SUB TOTAL	1556	240	12
TOTAL		1796	12

MODEL - 640DELIMAMES
 FILE NAME - \\mtr\mtr\com\for_illinois\pwr\PHWDD\Documents\DOT_Offices\District_B\Project\876NS6\CADD\DWG\CADD\sets\876NS6-sht-schedule.dgn

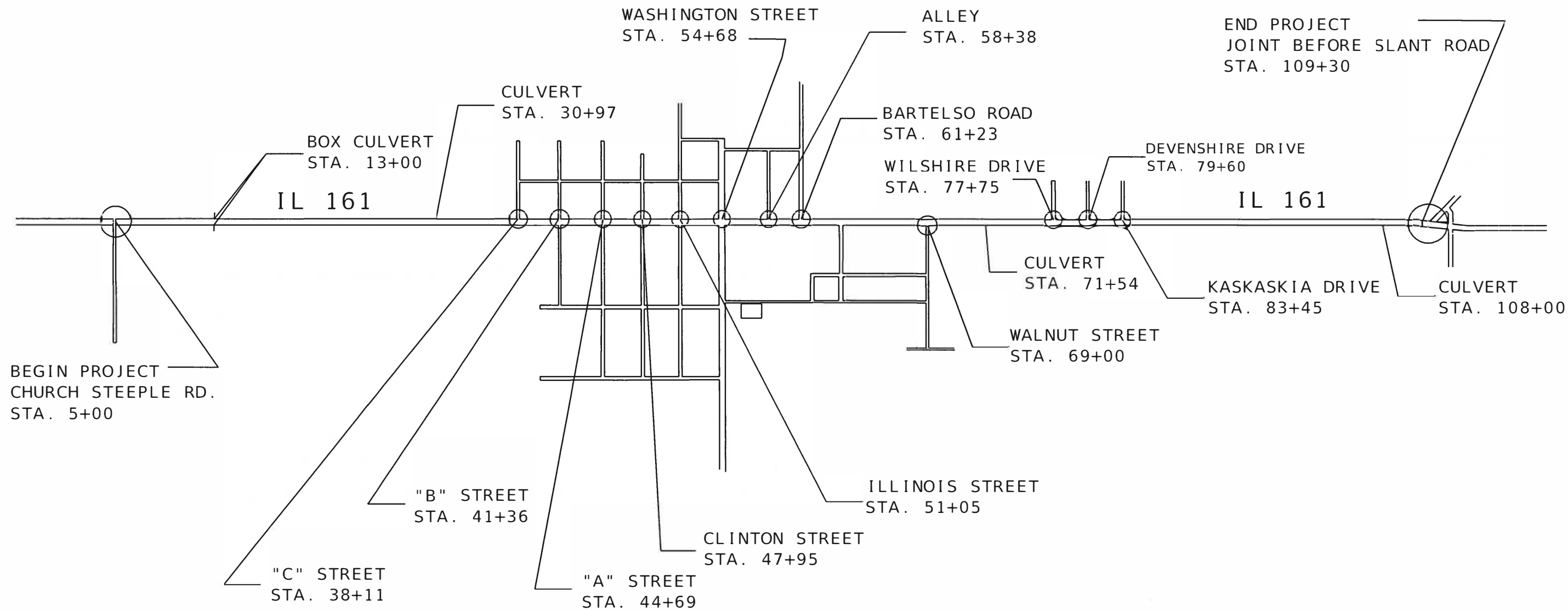
USER NAME = Default	DESIGNED - _____	REVISED - _____
PLOT SCALE = 1/9960' / 1 in.	DRAWN - _____	REVISED - _____
PLOT DATE = 3/4/2020	CHECKED - _____	REVISED - _____
	DATE - _____	REVISED - _____

**STATE OF ILLINOIS
DEPARTMENT OF TRANSPORTATION**

SCHEDULE OF QUANTITIES

SCALE: NTS SHEET 1 OF 2 SHEETS STA. 5 + 00 TO STA. 109 + 30

F.A.P. RTE.	SECTION	COUNTY	TOTAL SHEETS	SHEET NO.
805	127.128PP-1	CLINTON	6	5
CONTRACT NO. 76NS6			ILLINOIS FED. AID PROJECT	



BEGIN PROJECT
CHURCH STEEPLE RD.
STA. 5+00

END PROJECT
JOINT BEFORE SLANT ROAD
STA. 109+30

NOTES

START AT EAST SIDE OF CHURCH STEEPLE INTERSECTION
ALL THE STATIONS ARE TAKEN AT MIDDLE OF INTERSECTIONS
ENDS AT JOINT (240 FT) BEFORE SLANT ROAD

MODEL: SMOKE NAMES
 FILE NAME: \\planning\com\dot\illinois.gov\PI\DOT\Documents\DOT_Offices\District_B\Projects\127128PP\127128PP-1\DOT_76N56.spk_blan.dgn

USER NAME = Default	DESIGNED - _____	REVISED - _____
PLOT SCALE = 856.9240 / in.	DRAWN - _____	REVISED - _____
PLOT DATE = 3/4/2020	CHECKED - _____	REVISED - _____
	DATE - _____	REVISED - _____

STATE OF ILLINOIS
DEPARTMENT OF TRANSPORTATION

ROADWAY LAYOUT

 SCALE: NTS SHEET 1 OF 1 SHEETS STA. 5 + 00 TO STA. 109 + 30

F.A.P. RTE.	SECTION	COUNTY	TOTAL SHEETS	SHEET NO.
805	127.128PP-1	CLINTON	6	6

CONTRACT NO. 76N56

ILLINOIS FED. AID PROJECT