

STATE OF ILLINOIS  
DEPARTMENT OF TRANSPORTATION

F.A.R.T.E.	SECTION	COUNTY	TOTAL SHEETS	SHEET NO.
*	D9 BRIDGE REPAIR 2020-2	JOHNSON	34	1
		ILLINOIS	CONTRACT NO. 78730	
* F.A.P. 726 / F.A.S. 932 (IL 37 / IL 147)				

FOR INDEX OF SHEETS, SEE SHEET NO. 3

FOR SUMMARY OF QUANTITIES, SEE SHEET NO. 4-6

# PROPOSED HIGHWAY PLANS

F.A.P. 726 / F.A.S. 932 ROUTE IL 37 / IL 147  
SECTION D9 BRIDGE REPAIR 2020-2  
PROJECT STP-D5QN(577)  
BRIDGE DECK REPAIR  
JOHNSON COUNTY

C-99-066-19

**BRIDGE NO. 1**  
SN 044-0011  
F.A.P. 726 (IL 37)  
2017 ADT=1850, 12% TRUCKS  
TOWNSHIP - COUNTY UNIT ROAD DIST. 01  
POSTED SPEED: 55 MPH

**BRIDGE NO. 2**  
SN 044-0054  
F.A.S. 932 (IL 147)  
2017 ADT=950, 22% TRUCKS  
TOWNSHIP - COUNTY UNIT ROAD DIST. 01  
POSTED SPEED: 55 MPH

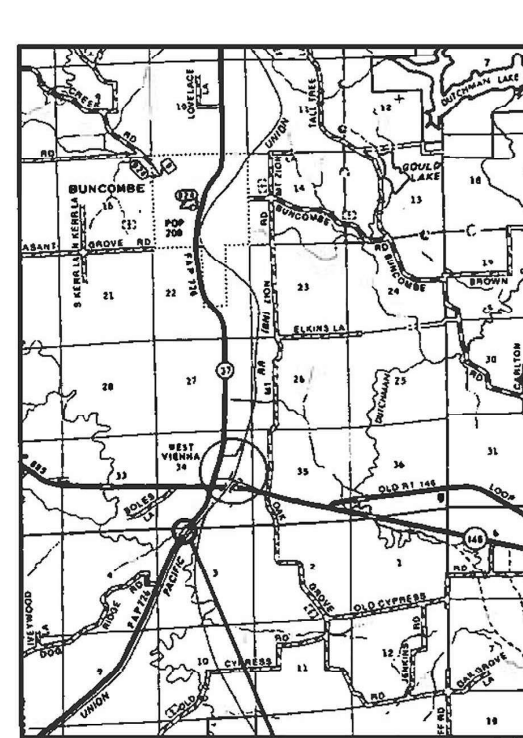
**BRIDGE NO. 3**  
SN 044-0025  
F.A.S. 932 (IL 147)  
2017 ADT=625, 20% TRUCKS  
TOWNSHIP - COUNTY UNIT ROAD DIST. 01  
POSTED SPEED: 50 MPH

**BRIDGE NO. 4**  
SN 044-0027  
F.A.S. 932 (IL 147)  
2017 ADT=450, 17% TRUCKS  
TOWNSHIP - COUNTY UNIT ROAD DIST. 01  
POSTED SPEED: 55 MPH

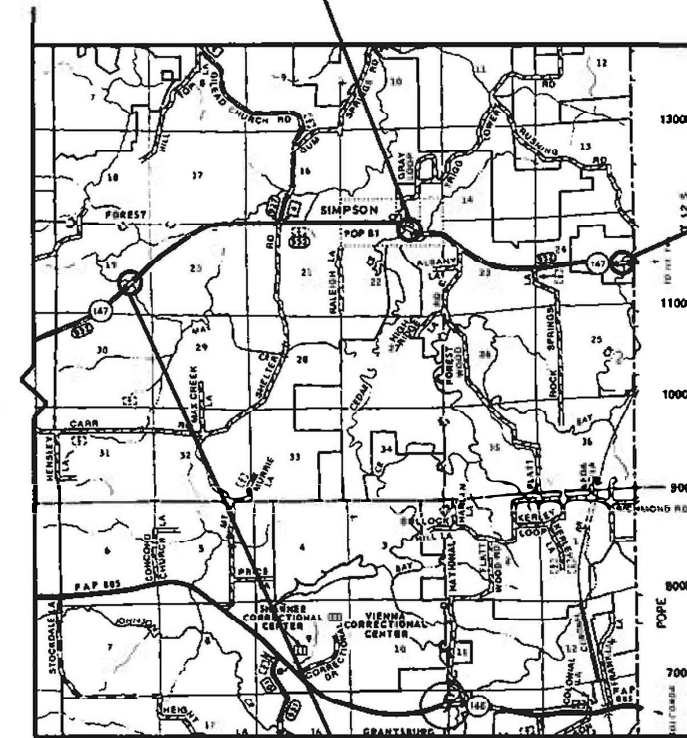
J.U.L.I.E.  
JOINT UTILITY LOCATION INFORMATION FOR EXCAVATORS  
1-800-892-0123  
OR 811

PROJECT ENGINEER: DAVID PICHE  
PROJECT DESIGNER: BILL PORTER

CONTRACT NO. 78730



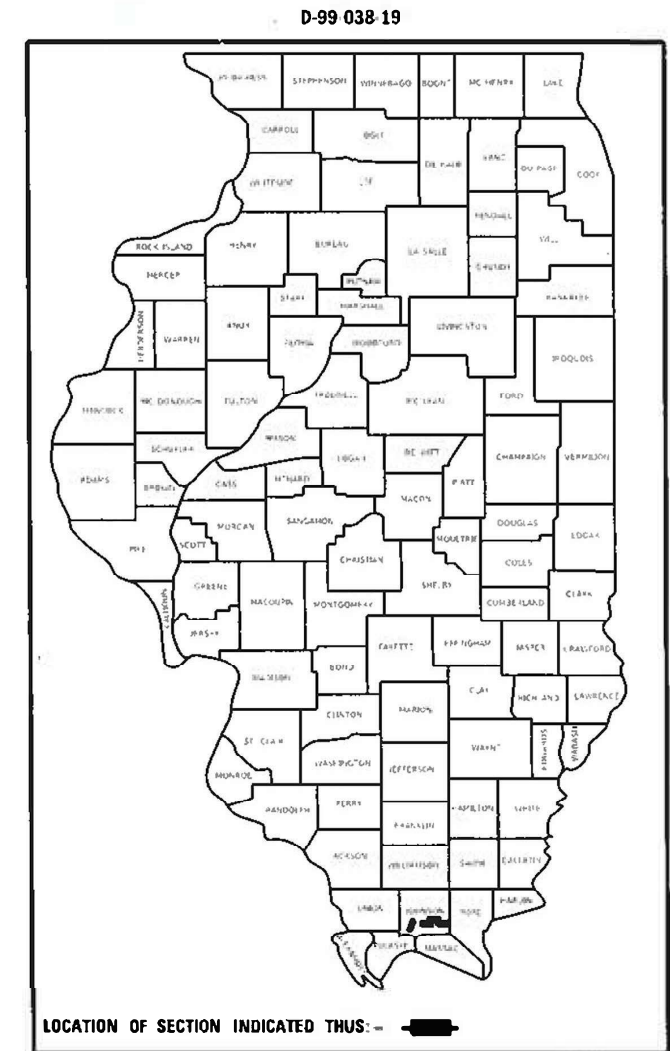
**BRIDGE NO. 1**  
SN 044-0011  
OVER CACHE RIVER  
0.5 MILES SOUTH OF WEST VIENNA



**BRIDGE NO. 2**  
SN 044-0054  
OVER MAX CREEK  
2.4 MILES WEST OF SIMPSON

**BRIDGE NO. 3**  
SN 044-0025  
OVER CEDAR CREEK  
AT EAST EDGE OF SIMPSON

**BRIDGE NO. 4**  
SN 044-0027  
OVER BAY CREEK  
0.2 MILES WEST OF THE POPE COUNTY LINE



STATE OF ILLINOIS  
DEPARTMENT OF TRANSPORTATION

SUBMITTED March 17, 2020  
Kush Roberts REGIONAL ENGINEER

May 8, 2020 [Signature]  
ENGINEER OF DESIGN AND ENVIRONMENT

May 8, 2020 [Signature]  
DIRECTOR OF HIGHWAYS PROJECT IMPLEMENTATION

PRINTED BY THE AUTHORITY  
OF THE STATE OF ILLINOIS



**INDEX OF SHEETS**

1	COVER SHEET
2	SIGNATURES
3	GENERAL NOTES, INDEX OF SHEETS, AND STANDARDS
4-6	SUMMARY OF QUANTITIES
7-17	SN 044-0011 BRIDGE REPAIR DETAILS
18-22	SN 044-0025 BRIDGE REPAIR DETAILS
23-29	SN 044-0027 BRIDGE REPAIR DETAILS
30-34	SN 044-0054 BRIDGE REPAIR DETAILS

**STANDARDS**

000001-06	STANDARD SYMBOLS, ABBREVIATIONS AND PATTERNS
001001-02	AREAS OF REINFORCEMENT BARS
001006	DECIMAL OF AN INCH AND OF A FOOT
701001-02	OFF-RD OPERATIONS, 2L, 2W, MORE THAN 15' AWAY
701006-05	OFF-RD OPERATIONS, 2L, 2W, 15' TO 24" FROM PAVEMENT EDGE
701201-04	LANE CLOSURE, 2L, 2W, DAY ONLY, FOR SPEEDS ≥ 45 MPH
701311-03	LANE CLOSURE, 2L, 2W, MOVING OPERATIONS-DAY_ONLY
701316-12	LANE CLOSURE, 2L, 2W, BRIDGE REPAIR FOR SPEEDS ≥ 45 MPH
701326-04	LANE CLOSURE, 2L, 2W, PAVEMENT WIDENING, FOR SPEEDS ≥ 45 MPH
701901-05	TRAFFIC CONTROL DEVICES
780001-05	TYPICAL PAVEMENT MARKINGS
782006	GUARDRAIL AND BARRIER WALL REFLECTOR MOUNTING DETAILS
862001-01	UNINTERRUPTIBLE POWER SUPPLY

**GENERAL NOTES**

FACTORS USED FOR ESTIMATING PLAN QUANTITIES ARE AS FOLLOWS AND SHALL NOT BE USED FOR THE BASIS OF FINAL QUANTITIES:  
 ALL HOT MIX ASPHALT 2.016 TONS/CU YD

CONCRETE REMOVAL QUANTITIES ARE ESTIMATED. THE FINAL LOCATIONS AND QUANTITIES WILL BE DETERMINED BY THE ENGINEER AND MARKED ON THE AS-BUILT PLANS.

COMMITMENTS: NONE

**MIXTURE REQUIREMENTS**

Locations	Hot-Mix Asphalt Surface Course
Mixture Use(s):	Hot-Mix Asphalt Surface Course, Mix C, N70
AB/PG:	PG64-22
ABR % (Max):	See Special Provision
Design Air Voids:	4.0 %, 70 Gyration Design
Mixture Composition: (Gradation Mixture)	IL-9.5FG
Friction Aggregate:	C Surface
Mixture Weight:	112 lbs/Sq Yd/in
Quality Management Program:	QCQA
Sublot Size:	NA

Locations	Hot-Mix Asphalt Base Course Widening
Mixture Use(s):	Hot-Mix Asphalt Binder Course, N30, IL-19.0L
AB/PG:	PG64-22
ABR % (Max):	See Special Provision
Design Air Voids:	4.0 %, 30 Gyration Design
Mixture Composition: (Gradation Mixture)	IL-19.0L
Friction Aggregate:	None
Mixture Weight:	112 lbs/Sq Yd/in
Quality Management Program:	QCQA
Sublot Size:	NA

\* F.A.P. 726 / F.A.S. 932 (IL 37 / IL 147)

MODEL: Default  
 FILE: I:\data\p\proj\lancoms.d\illinois\p\proj\DOT\Documents\DOT\_Offices\Chartet\_P\Projects\78730\CAD\Drawings\0978730-Sheet2.dgn

USER NAME = porterc	DESIGNED - _____	REVISED - _____	<b>STATE OF ILLINOIS DEPARTMENT OF TRANSPORTATION</b>	<b>INDEX OF SHEETS, GENERAL NOTES, MIXTURE REQUIREMENTS AND STANDARDS</b>		F.A. RTE.	SECTION	COUNTY	TOTAL SHEETS	SHEET NO.	
PLOT SCALE = 100.0031' / in.	DRAWN - _____	REVISED - _____		SCALE: _____	SHEET _____ OF _____ SHEETS	STA. _____ TO STA. _____	*	D9 BRIDGE REPAIR 2020-2	JOHNSON	34	3
PLOT DATE = 4/24/2020	CHECKED - _____	REVISED - _____						CONTRACT NO. 78730			
	DATE - _____	REVISED - _____						ILLINOIS		FED. AID PROJECT	

# SUMMARY OF QUANTITIES

COUNTY:	JOHNSON COUNTY			
ROUTE:	IL 37	IL 147	IL 147	IL 147
FUNDING:	80% FED / 20% STATE	80% FED / 20% STATE	80% FED / 20% STATE	80% FED / 20% STATE
LOCATION:	RURAL	RURAL	RURAL	RURAL
	044-0011	044-0054	044-0025	044-0027
	0013	0013	0013	0013

CODE NUMBER	ITEM DESCRIPTION	UNIT	TOTAL QUANTITY	044-0011 0013	044-0054 0013	044-0025 0013	044-0027 0013
35600716	HOT-MIX ASPHALT BASE COURSE WIDENING, 10"	SQ YD	344	128	72	72	72
40600290	BITUMINOUS MATERIALS (TACK COAT)	POUND	1,327	952	0	0	375
40600982	HOT-MIX ASPHALT SURFACE REMOVAL - BUTT JOINT	SQ YD	392	107	0	0	285
40600990	TEMPORARY RAMP	SQ YD	22	11	0	0	11
40604002	HOT-MIX ASPHALT SURFACE COURSE, IL-9.5FG, MIX "C", N70	TON	256	181	0	0	75
44004250	PAVED SHOULDER REMOVAL	SQ YD	344	128	72	72	72
50102400	CONCRETE REMOVAL	CU YD	26.4	17.1	0	4.5	4.8
50300255	CONCRETE SUPERSTRUCTURE	CU YD	28.3	18.7	0	4.5	5.1
50300300	PROTECTIVE COAT	SQ YD	72	40	0	14	18
50800205	REINFORCEMENT BARS, EPOXY COATED	POUND	3,405	2,180	0	565	660
50800515	BAR SPLICERS	EACH	44	20	0	12	12
52000110	PREFORMED JOINT STRIP SEAL	FOOT	379	251	0	64	64
58100200	WATERPROOFING MEMBRANE SYSTEM	SQ YD	2,161	1,609	0	0	552

REV. - MS

FAP. 726 / FAS. 932 (IL 37 / IL 147)

MODEL: D:\p1\work\11111111.dwg; FILE NAME: 11111111.dwg; PROJECT: 11111111; OFFICE: DISTRICT 9; PROJECT: 78730; CAD: 11111111; SHEET: 34

USER NAME = WILSONDA	DESIGNED -	REVISED -	<b>STATE OF ILLINOIS DEPARTMENT OF TRANSPORTATION</b>	<b>SUMMARY OF QUANTITIES</b>				F.A. RTE.	SECTION	COUNTY	TOTAL SHEETS	SHEET NO.
PLOT SCALE = 100.0000' / in.	DRAWN -	REVISED -		* D9 BRIDGE REPAIR 2020-2	JOHNSON	34	4	CONTRACT NO. 78730				
PLOT DATE = 3/17/2020	CHECKED -	REVISED -		SCALE:	SHEET	OF	SHEETS	STA.	TO STA.	ILLINOIS	FED. AID PROJECT	
	DATE -	REVISED -										

# SUMMARY OF QUANTITIES - CONT

COUNTY:	JOHNSON COUNTY			
ROUTE:	IL 37	IL 147	IL 147	IL 147
FUNDING:	80% FED / 20% STATE	80% FED / 20% STATE	80% FED / 20% STATE	80% FED / 20% STATE
LOCATION:	RURAL	RURAL	RURAL	RURAL
TOTAL QUANTITY	044-0011 0013	044-0054 0013	044-0025 0013	044-0027 0013

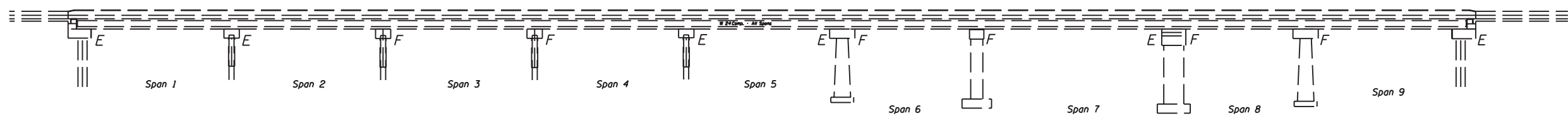
CODE NUMBER	ITEM DESCRIPTION	UNIT	TOTAL QUANTITY	044-0011 0013	044-0054 0013	044-0025 0013	044-0027 0013
60300105	FRAMES AND GRATES TO BE ADJUSTED	EACH	4	4	0	0	0
67000400	ENGINEER'S FIELD OFFICE, TYPE A	CAL MO	12	3	3	3	3
67100100	MOBILIZATION	L SUM	1	0.25	0.25	0.25	0.25
70100100	TRAFFIC CONTROL AND PROTECTION, STANDARD 701316	EACH	4	1	1	1	1
70100450	TRAFFIC CONTROL AND PROTECTION, STANDARD 701201	L SUM	1	0.25	0.25	0.25	0.25
70100500	TRAFFIC CONTROL AND PROTECTION, STANDARD 701326	L SUM	1	0.25	0.25	0.25	0.25
70103815	TRAFFIC CONTROL SURVEILLANCE	CAL DA	24	6	6	6	6
70106500	TEMPORARY BRIDGE TRAFFIC SIGNALS	EACH	4	1	1	1	1
70106700	TEMPORARY RUMBLE STRIPS	EACH	24	6	6	6	6
70107025	CHANGEABLE MESSAGE SIGN	CAL DA	112	28	28	28	28
70300100	SHORT TERM PAVEMENT MARKING	FOOT	486	164	105	105	112
70300150	SHORT TERM PAVEMENT MARKING REMOVAL	SQ FT	162	55	35	35	37

MODEL: Default  
 FILE: M:\MSA\Projects\78730\CAD\Drawings\CAD\Drawings\78730-01-01.dwg

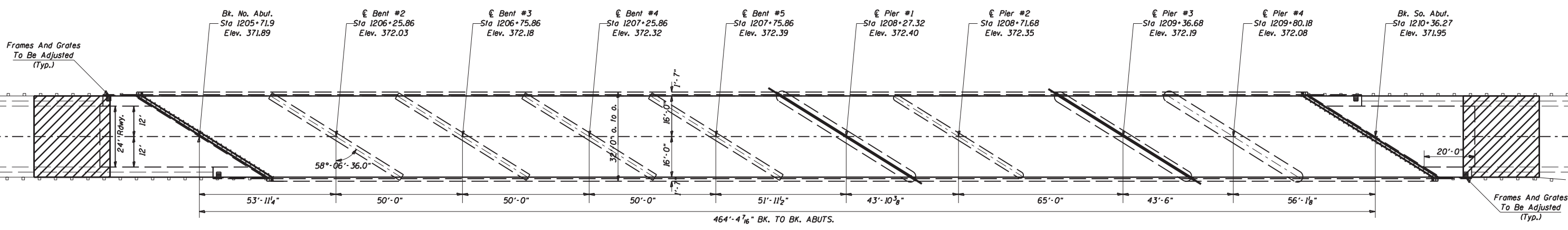
F.A.P. 726 / F.A.S. 932 (IL 37 / IL 147)

USER NAME = WILSONDA	DESIGNED -	REVISED -	<b>STATE OF ILLINOIS DEPARTMENT OF TRANSPORTATION</b>	<b>SUMMARY OF QUANTITIES</b>			F.A. RTE.	SECTION	COUNTY	TOTAL SHEETS	SHEET NO.
PLOT SCALE = 100.0000' / in.	DRAWN -	REVISED -					* D9 BRIDGE REPAIR 2020-2	JOHNSON	34	5	
PLOT DATE = 3/17/2020	CHECKED -	REVISED -		SCALE: SHEET OF SHEETS STA. TO STA.			CONTRACT NO. 78730		ILLINOIS FED. AID PROJECT		
	DATE -	REVISED -									





**ELEVATION**



**PLAN**

**GENERAL NOTES**

Plan dimensions and details relative to existing plans are subject to nominal construction variations. The Contractor shall field verify existing dimensions and details affecting new construction and make necessary approved adjustments prior to construction or ordering of materials. Such variations shall not be cause for additional compensation for a change in scope of the work, however, the Contractor will be paid for the quantity actually furnished at the unit price bid for the work.

Joint openings shall be adjusted according to Article 520.04 of the Std. Specs. when the deck is poured at an ambient temperature other than 50°F.

Prior to pouring the new concrete deck section, all heavy or loose rust, loose mill scale, and other loose or potentially detrimental foreign material shall be removed from the surfaces in contact with concrete. Tightly adhered paint may remain unless otherwise noted. Removal shall be accomplished by methods that will not damage the steel and the cost will be included in the pay item covering removal of the existing concrete.

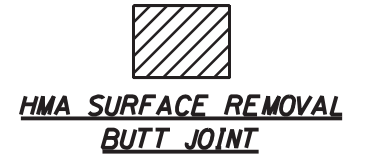
Existing reinforcement bars extending into the removal area shall be cleaned, straightened and incorporated into the new construction. Any reinforcement bars that are damaged during concrete removal shall be replaced with an approved bar splicer or anchorage system. Cost included with Concrete Removal.

Reinforcement bars designated (E) shall be epoxy coated.

Areas of deck repairs shown are estimated. The Engineer shall show actual locations of deck repairs on as-built plans.

The cost to remove and re-erect the terminals attached to the parapets shall be included in the cost of Concrete Removal.

The deck surface shall have its final finish tined according to Article 420.09(e)(1) of the Standard Specifications. Cost included with Concrete Superstructure.



**TOTAL BILL OF MATERIAL**

ITEM	UNIT	QUANTITY
Concrete Removal	Cu. Yd.	17.2
Concrete Superstructure	Cu. Yd.	18.8
Protective Coat	Sq. Yd.	40
Reinforcement Bars, Epoxy Coated	Pound	2180
Bar Splicers	Each	20
Preformed Joint Strip Seal	Foot	251
Waterproofing Membrane System	Sq. Yd.	1609
Deck Slab Repair (Partial Depth)	Sq. Yd.	0.8
Approach Slab Repair (Partial Depth)	Sq. Yd.	10.4
Frames and Grates to be Adjusted	Each	4
Structural Repair of Concrete (Depth ≤ 5")	Sq. Ft.	59
Hot-Mix Asphalt Surface Course, IL 9.5FG, Mix "C", N70	Ton	181
Hot-Mix Asphalt Base Course Widening, 10"	Sq. Yd.	128
Hot-Mix Asphalt Surface Removal - Butt Joint	Sq. Yd.	107
Paved Shoulder Removal	Sq. Yd.	128
Bituminous Materials (Tack Coat)	Pound	952
Temporary Ramp	Sq. Yd.	11
Bridge Deck Concrete Crack Sealer	Foot	700

\* On New Concrete Only



*David Carl Puzey* 04/28/2020

Expires: 11/30/2020

**BRIDGE REPAIRS  
IL 37 OVER CACHE RIVER  
JOHNSON COUNTY  
S.N. 044-0011**

\* F.A.P. 726 / F.A.S. 932 (IL 37 / IL 147)

MODEL: Default  
FILE: NAME: p:\pub\arcoms.dat  
PROJECT: 38730\CADData\CAD\brackets\0978730-sheet1.dgn

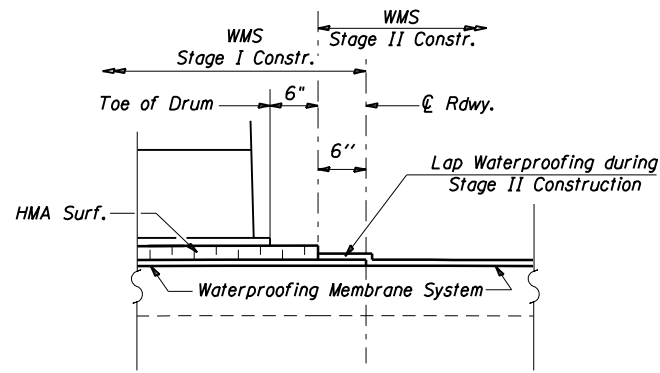
USER NAME = porterc	DESIGNED - _____	REVISED - _____
PLOT SCALE = 40.0030 ' / in.	DRAWN - _____	REVISED - _____
PLOT DATE = 4/28/2020	CHECKED - _____	REVISED - _____
	DATE - _____	REVISED - _____

**STATE OF ILLINOIS  
DEPARTMENT OF TRANSPORTATION**

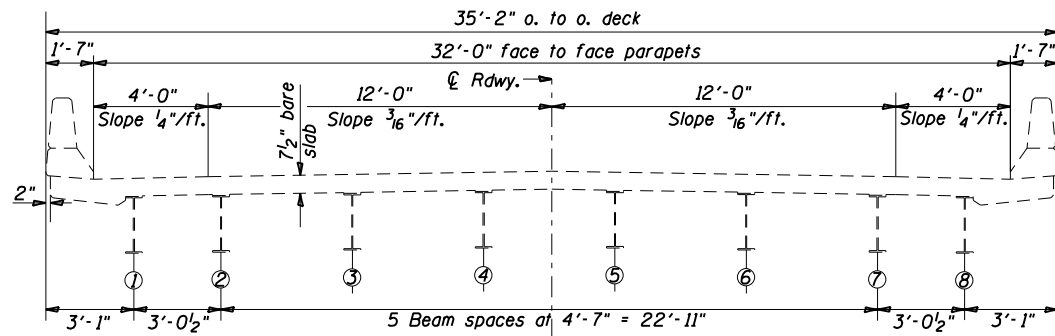
**GENERAL PLAN AND ELEVATION  
SN 044-0011**

SCALE: \_\_\_\_\_ SHEET \_\_\_\_\_ OF \_\_\_\_\_ SHEETS STA. \_\_\_\_\_ TO STA. \_\_\_\_\_

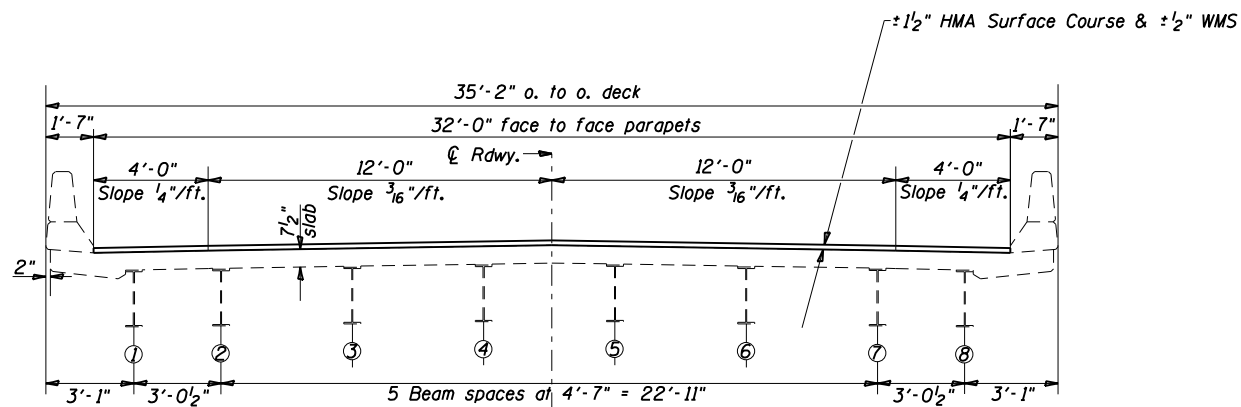
F.A. RTE. *	SECTION	COUNTY	TOTAL SHEETS	SHEET NO.
D9 BRIDGE REPAIR 2020-2		JOHNSON	34	7
CONTRACT NO. 78730			ILLINOIS FED. AID PROJECT	



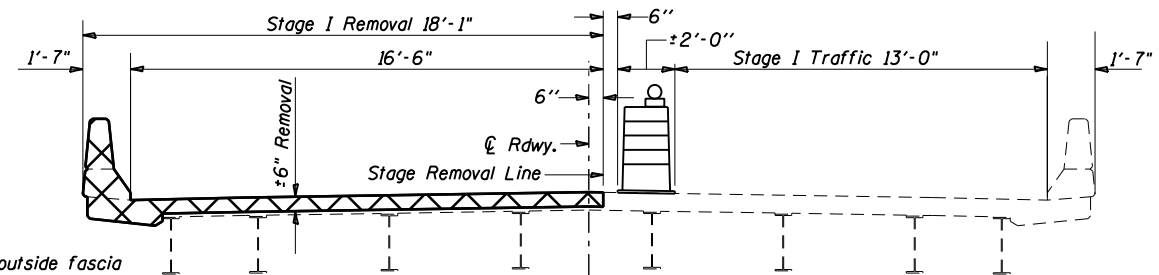
**WATERPROOFING TREATMENT AT STAGE CONSTRUCTION**



**TYPICAL BRIDGE SECTION - EXISTING**

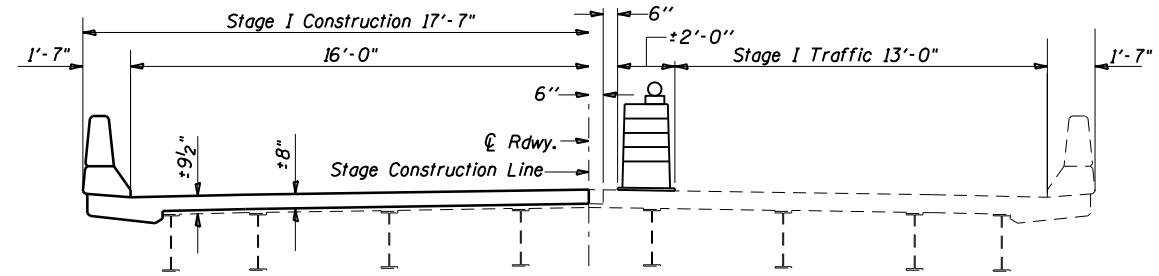


**TYPICAL BRIDGE SECTION - PROPOSED**

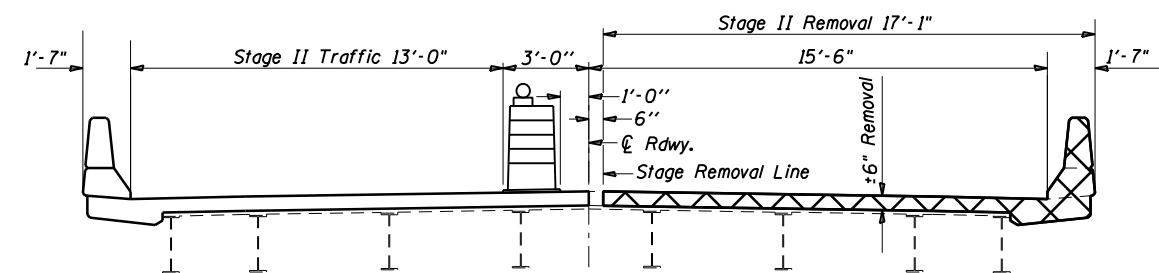


Remove full depth outside fascia beam flange on deck span (also remove full depth outside vaulted abutment curtain wall on approach span)

**STAGE I REMOVAL**

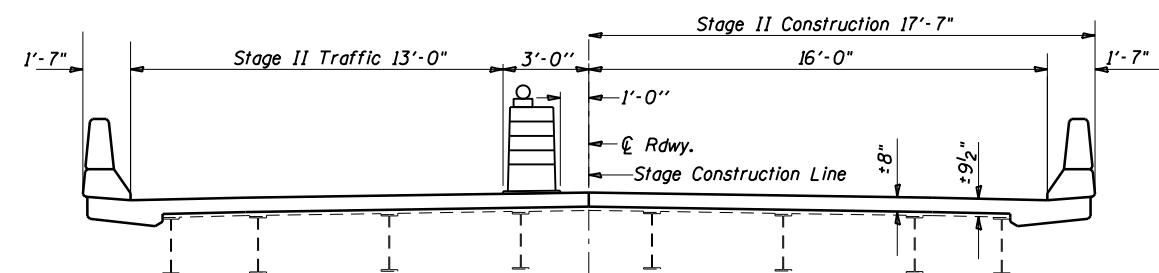


**STAGE I CONSTRUCTION**



Remove full depth outside fascia beam flange on deck span (also remove full depth outside vaulted abutment curtain wall on approach span)

**STAGE II REMOVAL**



**STAGE II CONSTRUCTION**

\* F.A.P. 726 / F.A.S. 932 (IL 37 / IL 147)

Concrete Removal (Shown at Joint Locations on Deck Side)

Notes: All Sections looking South

\* F.A.P. 726 / F.A.S. 932 (IL 37 / IL 147)

STATE OF ILLINOIS  
DEPARTMENT OF TRANSPORTATION

TYPICAL SECTIONS AND STAGING  
SN 044-0011 - SPANS #1 THRU #5

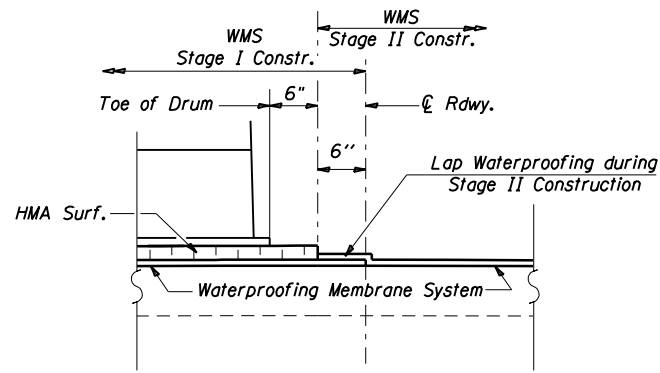
USER NAME = porterc	DESIGNED - CPL	REVISED - _____
DRAWN - CPL	REVISIONS - _____	
PLOT SCALE = 6.6999' / in.	CHECKED - MAS	REVISIONS - _____
PLOT DATE = 4/24/2020	DATE - 06/11/18	REVISIONS - _____

SCALE: \_\_\_\_\_ SHEET \_\_\_\_\_ OF \_\_\_\_\_ SHEETS STA. \_\_\_\_\_ TO STA. \_\_\_\_\_

F.A. RTE.	SECTION	COUNTY	TOTAL SHEETS	SHEET NO.
*	D9 BRIDGE REPAIR 2020-2	JOHNSON	34	8
			CONTRACT NO. 78730	
ILLINOIS FED. AID PROJECT				

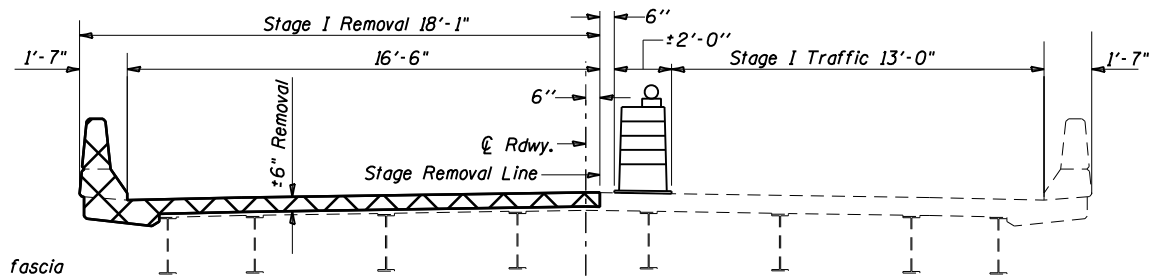
MODEL: Default  
 FILE: MasE:proj\plan\sn044\0011\DOT\Documents\DOT\_Office\Drawings\044-0011-SPANS#1-THRU#5-SHEETS.dgn  
 PROJECT: 2020-2 BRIDGE REPAIR 2020-2  
 CADD: DataCAD\Drawings\044-0011-SPANS#1-THRU#5-SHEETS.dgn



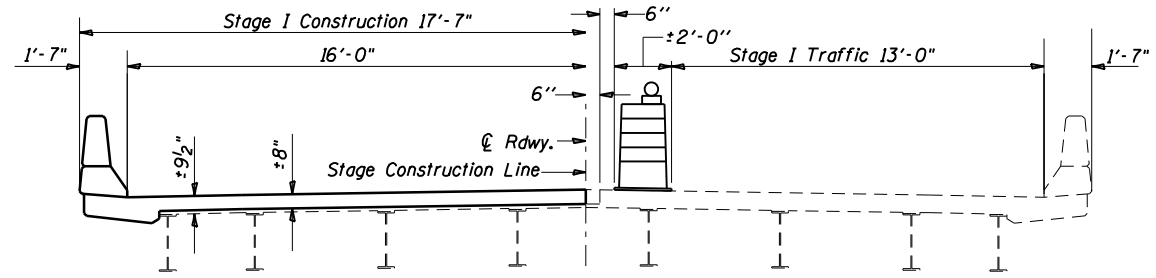


**WATERPROOFING TREATMENT AT STAGE CONSTRUCTION**

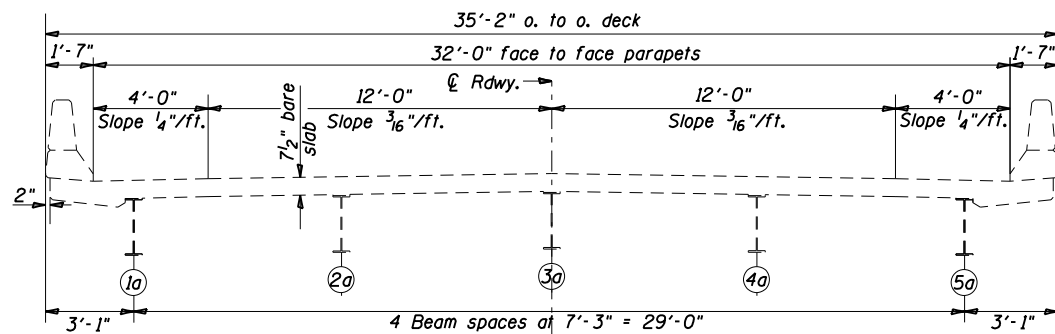
Remove full depth outside fascia beam flange on deck span (also remove full depth outside vaulted abutment curtain wall on approach span)



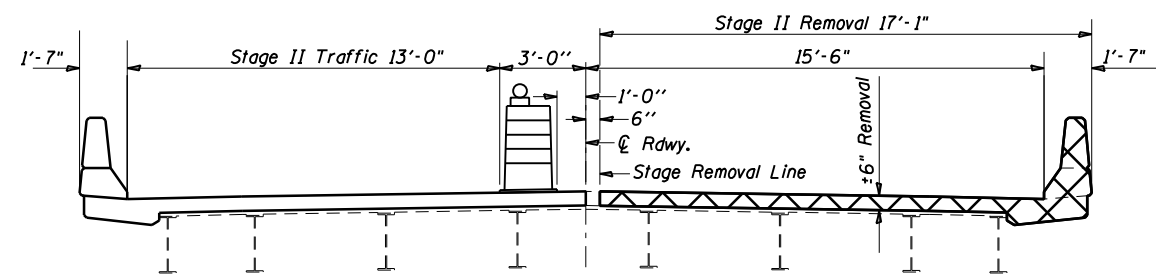
**STAGE I REMOVAL**



**STAGE I CONSTRUCTION**

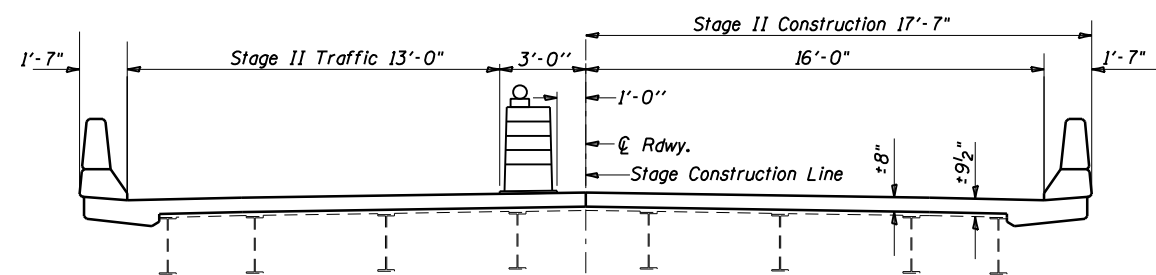


**TYPICAL BRIDGE SECTION - EXISTING**



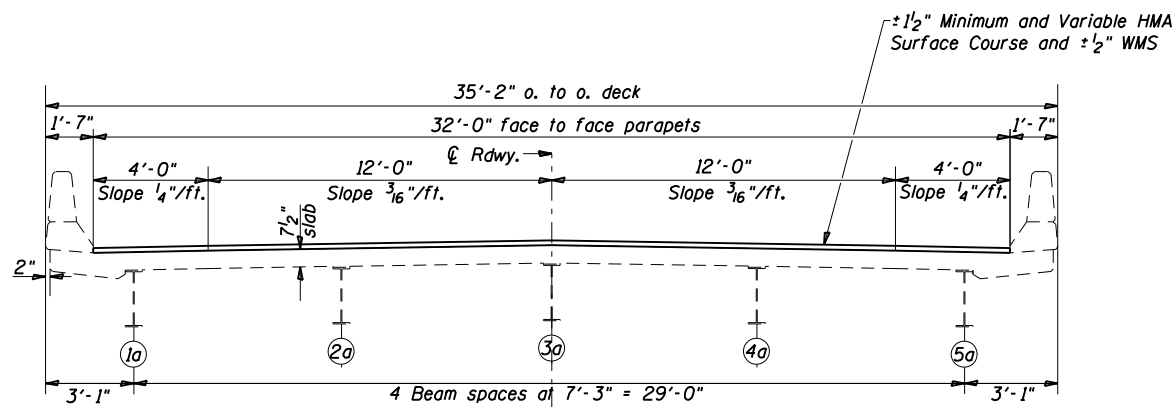
**STAGE II REMOVAL**

Remove full depth outside fascia beam flange on deck span (also remove full depth outside vaulted abutment curtain wall on approach span)



**STAGE II CONSTRUCTION**

Concrete Removal (Shown at Joint Locations on Deck Side)  
Notes: All Sections looking South



**TYPICAL BRIDGE SECTION - PROPOSED**

STATE OF ILLINOIS  
DEPARTMENT OF TRANSPORTATION

TYPICAL SECTIONS AND STAGING  
SN 044-0011 - SPANS #6 THRU #9

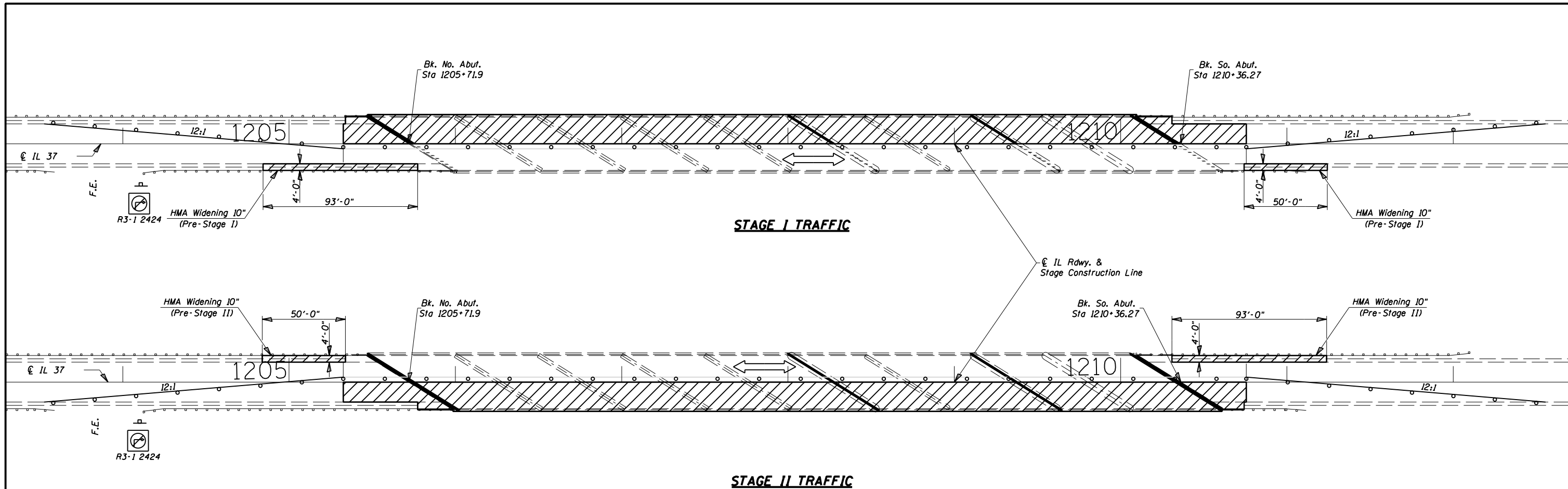
\* F.A.P. 726 / F.A.S. 932 (IL 37 / IL 147)

USER NAME = porterc	DESIGNED - CPL	REVISED -
DRAWN - CPL	REVISIONS -	
PLOT SCALE = 6.7000' / in.	CHECKED - MAS	REVISIONS -
PLOT DATE = 4/24/2020	DATE - 06/11/18	REVISIONS -

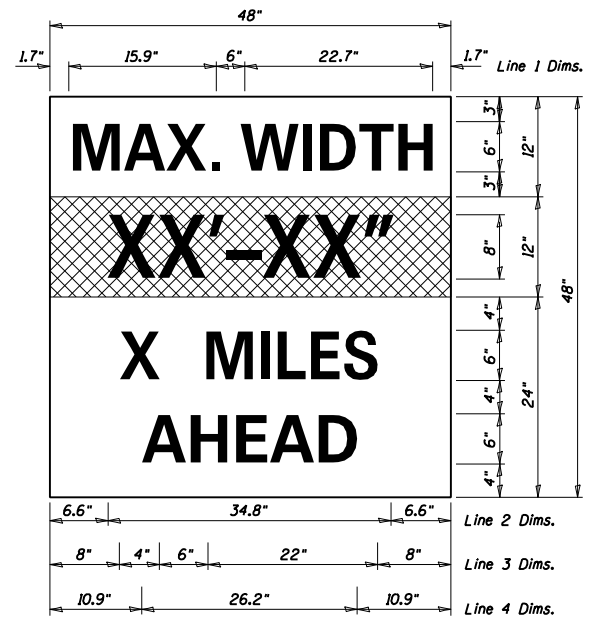
SCALE: \_\_\_\_\_ SHEET \_\_\_\_\_ OF \_\_\_\_\_ SHEETS STA. \_\_\_\_\_ TO STA. \_\_\_\_\_

F.A. RTE.	SECTION	COUNTY	TOTAL SHEETS	SHEET NO.
*	D9 BRIDGE REPAIR 2020-2	JOHNSON	34	9
			CONTRACT NO. 78730	
ILLINOIS FED. AID PROJECT				

MODEL: D:\full...  
 FILE: M:\E...  
 PROJECT: 78730\DATA\CAD\Drawings\DOT\Office\Drawings\9\Projects\78730\CAD\Drawings\DOT\78730-Sheet1.dgn



Notes: See standard 701316 for additional details.



**Notes for Max Width Sign:**

1. Install a max width sign each direction on IL 37 to give traffic approaching work zone notice to change routes if needed. Exact locations as directed by engineer.
2. The contractor shall furnish the posts and erect the signs at the locations directed by the engineer, all signs shall be post mounted.
3. The noted work, including signs, posts, hardware and labor shall be included in the contract unit price, Each, for Traffic Control and Protection, Std. 701316. No other compensation will be allowed.
4. The width shown on the W12-I103 sign shall be 11'-6" for both Stage I and Stage II.
5. The "X" Miles Ahead will be determined by the engineer.

**W12-I103**  
 W12-I103, No Border  
 "MAX WIDTH" 6D, No Border, Black on White  
 "XX'-XX" 8D, No Border, Black on Orange  
 "X MILES" 6D, No Border, Black on White  
 "AHEAD" 6D, No Border, Black on White

MODEL: Default  
 FILE: M:\E:\Projects\78730\CADD\Drawings\DOT\Office\Sheet1.dwg  
 PROJECT: 78730\CADD\Drawings\DOT\Office\Sheet1.dwg  
 USER: porterc  
 DATE: 4/24/2020

\* F.A.P. 726 / F.A.S. 932 (IL 37 / IL 147)

USER NAME = porterc	DESIGNED - _____	REVISED - _____
PLOT SCALE = 60.0026 ' / in.	CHECKED - _____	REVISED - _____
PLOT DATE = 4/24/2020	DATE - _____	REVISED - _____

**STATE OF ILLINOIS  
DEPARTMENT OF TRANSPORTATION**

**STAGING DETAILS  
SN 044-0011**

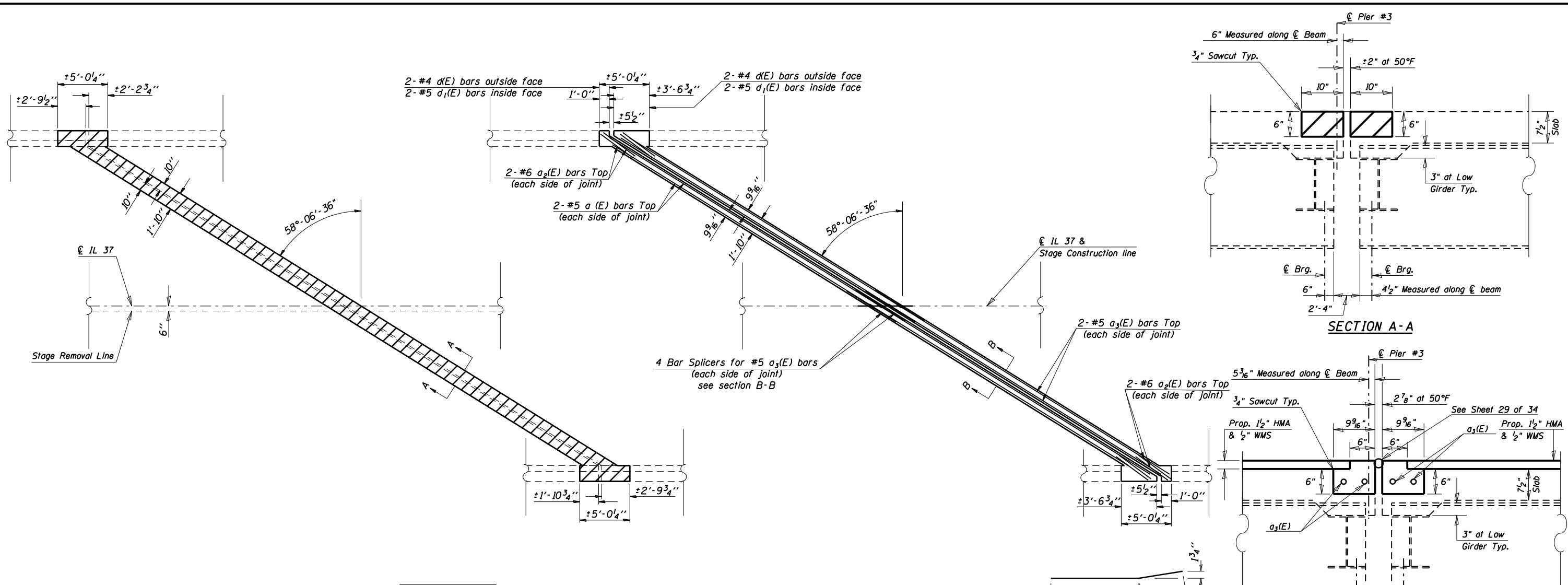
SCALE: \_\_\_\_\_ SHEET \_\_\_\_\_ OF \_\_\_\_\_ SHEETS STA. \_\_\_\_\_ TO STA. \_\_\_\_\_

F.A. RTE.	SECTION	COUNTY	TOTAL SHEETS	SHEET NO.
*	D9 BRIDGE REPAIR 2020-2	JOHNSON	34	10
CONTRACT NO. 78730			ILLINOIS FED. AID PROJECT	





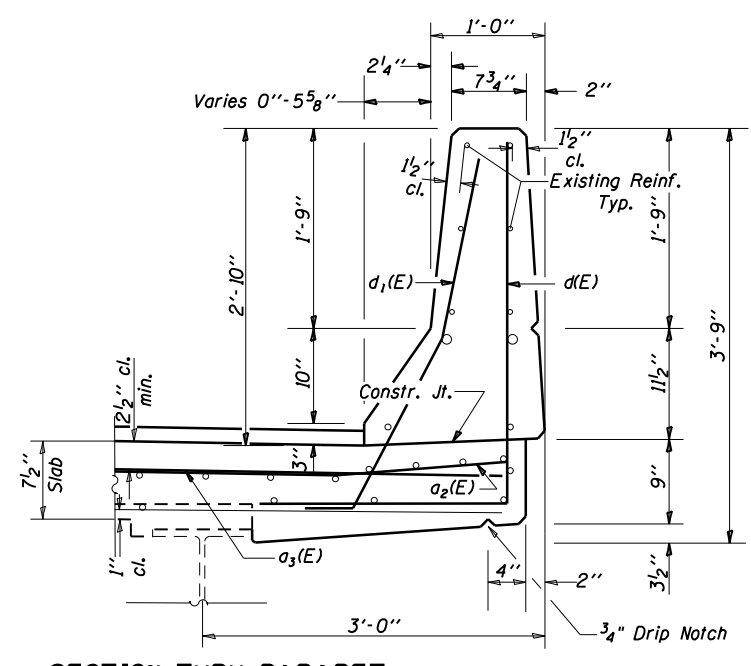
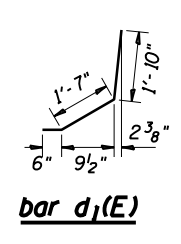
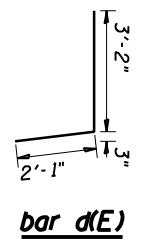
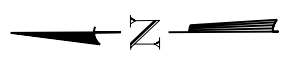
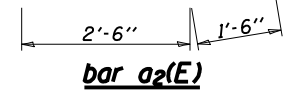




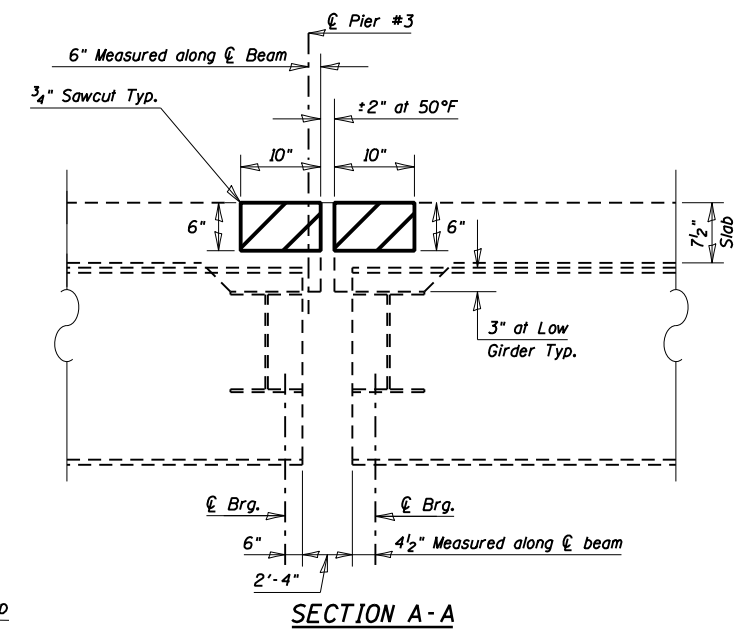
**PIER #3 PLAN**  
Showing Concrete Removal



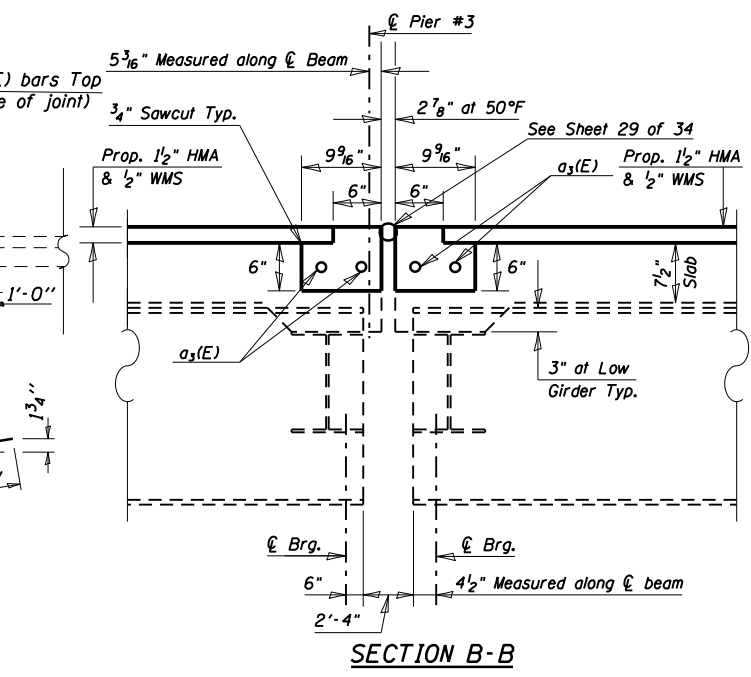
**PIER #3 PLAN**  
Showing New Concrete



**SECTION THRU PARAPET**



**SECTION A-A**



**SECTION B-B**

**BILL OF MATERIAL PIER #3**

Bar	No.	Size	Length	Shape
a <sub>2</sub> (E)	8	#6	4'-0"	—
a <sub>3</sub> (E)	8	#5	31'-10"	—
d(E)	8	#4	5'-3"	J
d <sub>1</sub> (E)	8	#5	3'-11"	J
Bar Splicers			Each	4
Concrete Superstructure			Cu Yd	3.4
Concrete Removal			Cu Yd	3.5
Reinforcement Bars, Epoxy Coated			Pound	380

\* F.A.P. 726 / F.A.S. 932 (IL 37 / IL 147)

MODEL: Defaul...  
 FILE: I:\AME...  
 PROJECT: 78730\CADData\CAD\Drawings\0978730-Sheet1.dgn

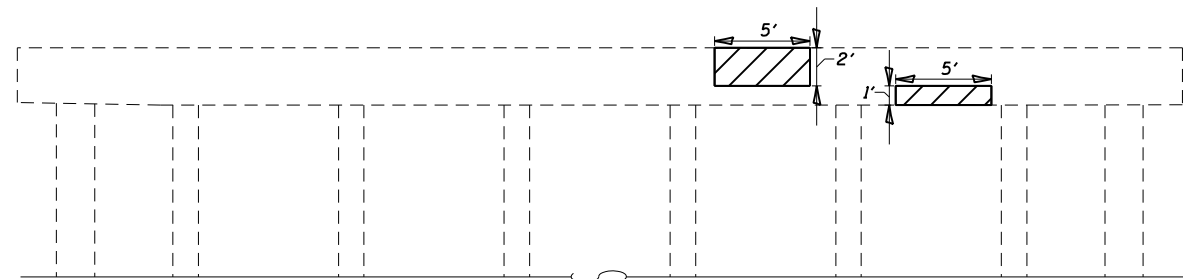
USER NAME = porterc	DESIGNED - _____	REVISED - _____
DRAWN - _____	REVISED - _____	REVISED - _____
PLOT SCALE = 10.0501' / in.	CHECKED - _____	REVISED - _____
PLOT DATE = 4/24/2020	DATE - _____	REVISED - _____

**STATE OF ILLINOIS**  
**DEPARTMENT OF TRANSPORTATION**

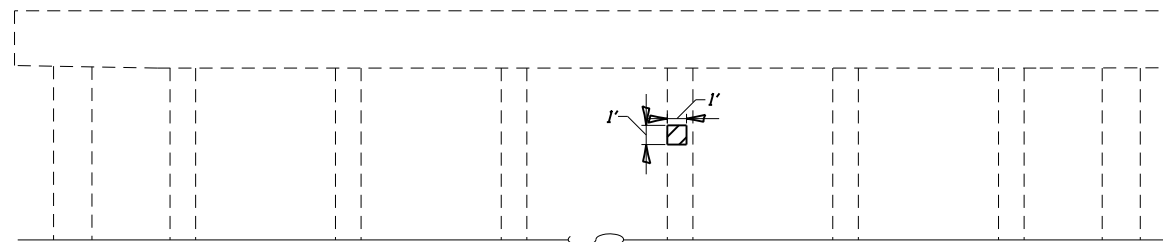
**PIER #3 JOINT DETAILS**  
**SN 044-0011**

SCALE: \_\_\_\_\_ SHEET \_\_\_\_\_ OF \_\_\_\_\_ SHEETS STA. \_\_\_\_\_ TO STA. \_\_\_\_\_

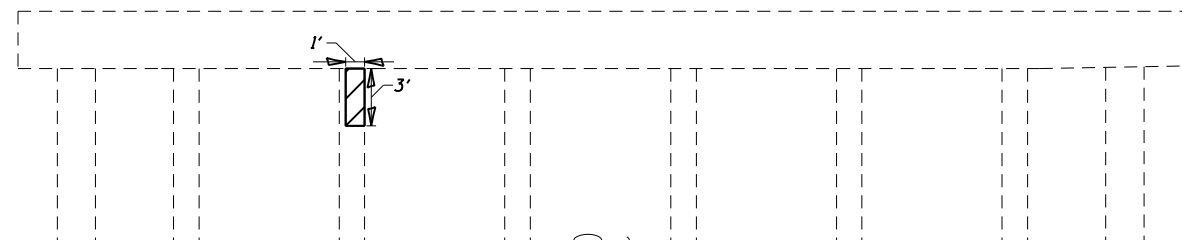
F.A. RTE.	SECTION	COUNTY	TOTAL SHEETS	SHEET NO.
*	D9 BRIDGE REPAIR 2020-2	JOHNSON	34	14
CONTRACT NO. 78730			ILLINOIS FED. AID PROJECT	



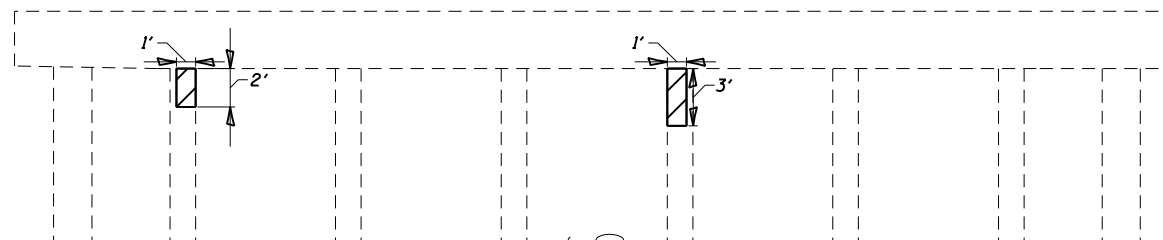
**NORTH FACE BENT #2**  
LOOKING SOUTH  
PERPENDICULAR TO BENT



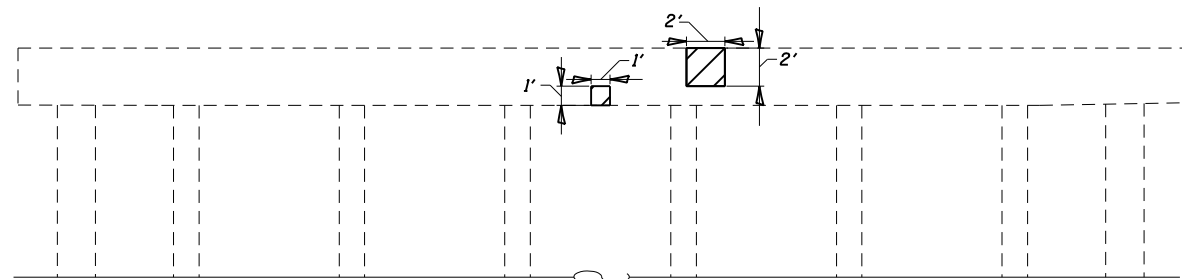
**NORTH FACE BENT #4**  
LOOKING SOUTH  
PERPENDICULAR TO BENT



**SOUTH FACE BENT #4**  
LOOKING NORTH  
PERPENDICULAR TO BENT



**NORTH FACE BENT #5**  
LOOKING SOUTH  
PERPENDICULAR TO BENT



**SOUTH FACE BENT #5**  
LOOKING NORTH  
PERPENDICULAR TO BENT



Structural repair of concrete  $\leq$  5"

\* F.A.P. 726 / F.A.S. 932 (IL 37 / IL 147)

MODEL: D:\default  
 FILE: M:\MS\_E\_Plan\plan\comps.dwt  
 I:\Illinois\pwr\I\DOT\Documents\DOT\_Offices\District\_9\Projects\78730\CADD\Bent\Sheet1\0778730-sheet1.dgn

USER NAME = porterc	DESIGNED - _____	REVISED - _____
DRAWN - _____	REVISIONS - _____	REVISIONS - _____
PLOT SCALE = 10.0494' / in.	CHECKED - _____	REVISIONS - _____
PLOT DATE = 4/24/2020	DATE - _____	REVISIONS - _____

**STATE OF ILLINOIS  
DEPARTMENT OF TRANSPORTATION**

**SUBSTRUCTURE REPAIRS  
SN 044-0011**

SCALE: \_\_\_\_\_ SHEET \_\_\_\_\_ OF \_\_\_\_\_ SHEETS STA. \_\_\_\_\_ TO STA. \_\_\_\_\_

F.A. RTE.	SECTION	COUNTY	TOTAL SHEETS	SHEET NO.
*	D9 BRIDGE REPAIR 2020-2	JOHNSON	34	15
			CONTRACT NO. 78730	
ILLINOIS FED. AID PROJECT				



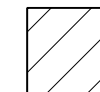
**NORTH FACE PIER #1**  
 LOOKING SOUTH  
 PERPENDICULAR TO PIER



**SOUTH FACE PIER #1**  
 LOOKING NORTH  
 PERPENDICULAR TO PIER

**BILL OF MATERIAL**

ITEM	UNIT	TOTAL
Structural repair of concrete (Depth $\leq$ 5 Inches)	Sq. Ft.	59



Structural repair of concrete  $\leq$  5"

\* F.A.P. 726 / F.A.S. 932 (IL 37 / IL 147)

MODEL: Default  
 FILE NAME: P:\Highways\Illinois\p04\PROJECTS\DOT Documents\DOT Office\Drawings\Projects\78730\CADD\Drawings\0778730-Sheet1.dgn

USER NAME = porterwc	DESIGNED - _____	REVISED - _____
	DRAWN - _____	REVISED - _____
PLOT SCALE = 10.0499 ' / in.	CHECKED - _____	REVISED - _____
PLOT DATE = 4/24/2020	DATE - _____	REVISED - _____

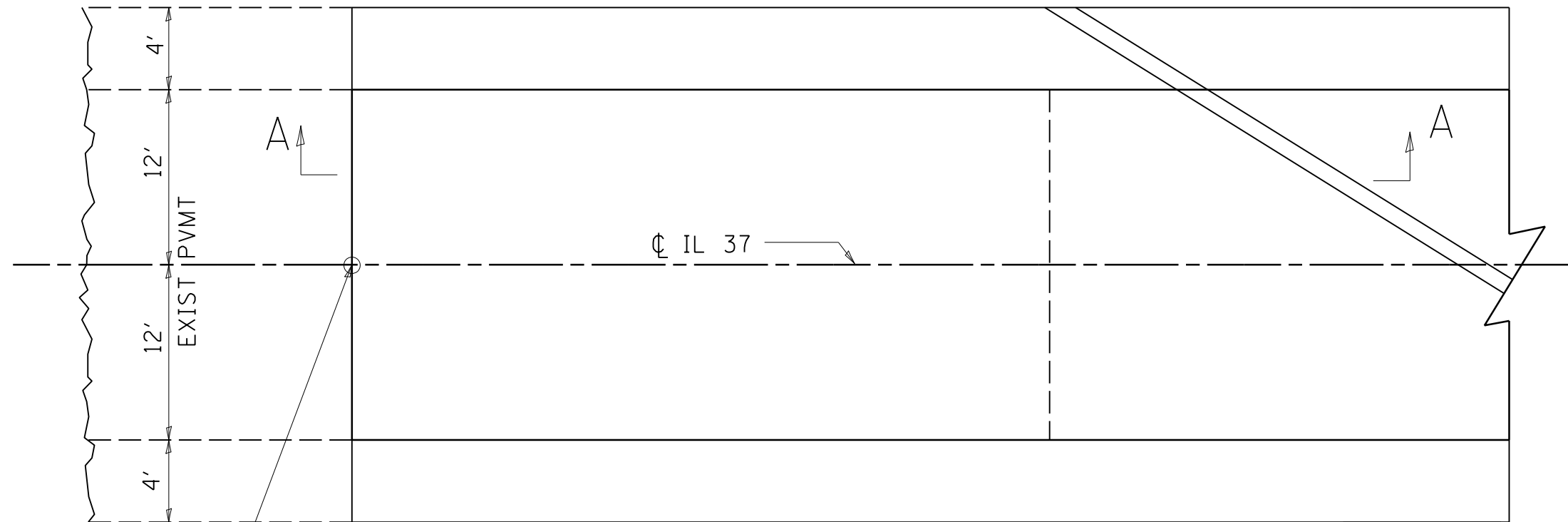
**STATE OF ILLINOIS  
 DEPARTMENT OF TRANSPORTATION**

<b>SUBSTRUCTURE REPAIRS</b>	
<b>SN 044-0011</b>	
SCALE: _____	SHEET ____ OF ____ SHEETS STA. _____ TO STA. _____

F.A. RTE.	SECTION	COUNTY	TOTAL SHEETS	SHEET NO.
*	D9 BRIDGE REPAIR 2020-2	JOHNSON	34	16
CONTRACT NO. 78730				
ILLINOIS FED. AID PROJECT				

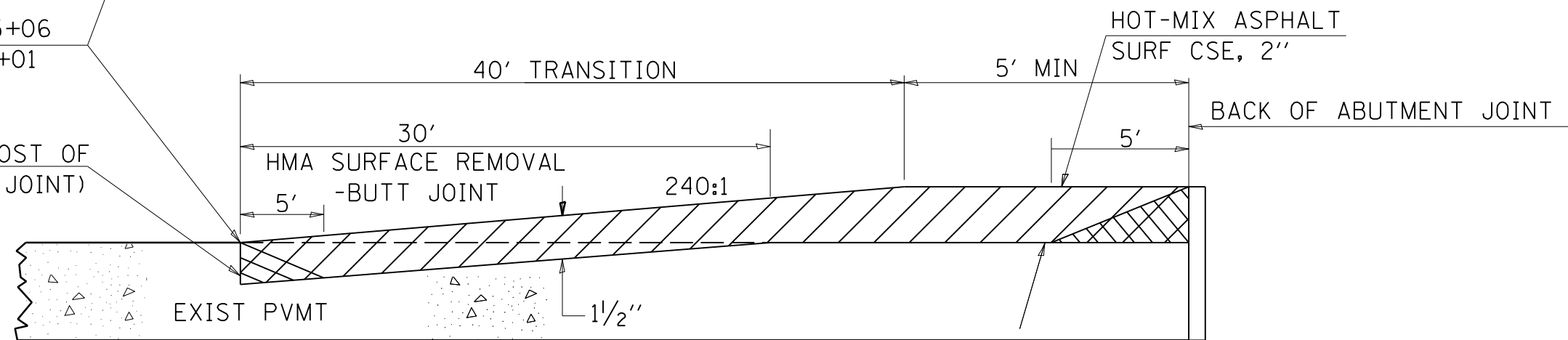


# BUTT JOINT

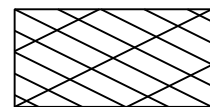


STA 1205+06  
STA 1211+01

SAW CUT (INCLUDED IN THE COST OF  
HMA SURFACE REMOVAL-BUTT JOINT)



### LEGEND:



TEMPORARY RAMP



HMA SURF CSE

### SECTION A-A

#### REVISIONS

DRAWN	03-09-17
REVISED	
REVISED	
REVISED	

STD. 9-118

\* F.A.P. 726 / F.A.S. 932 (IL 37 / IL 147)

MODEL: Defaul  
FILE: \\nas0101.pw.state.il.us\proj\p11111\DOT\Documents\DOT\_Office\Distric\_9\Project\726\730\CADD\Drawings\02\726-Sheet1.dgn

USER NAME = porterc	DESIGNED - ASH	REVISED - _____
	DRAWN - ASH	REVISED - _____
PLOT SCALE = 50.0056' / in.	CHECKED - MAS	REVISED - _____
PLOT DATE = 4/24/2020	DATE - 10/01/2019	REVISED - _____

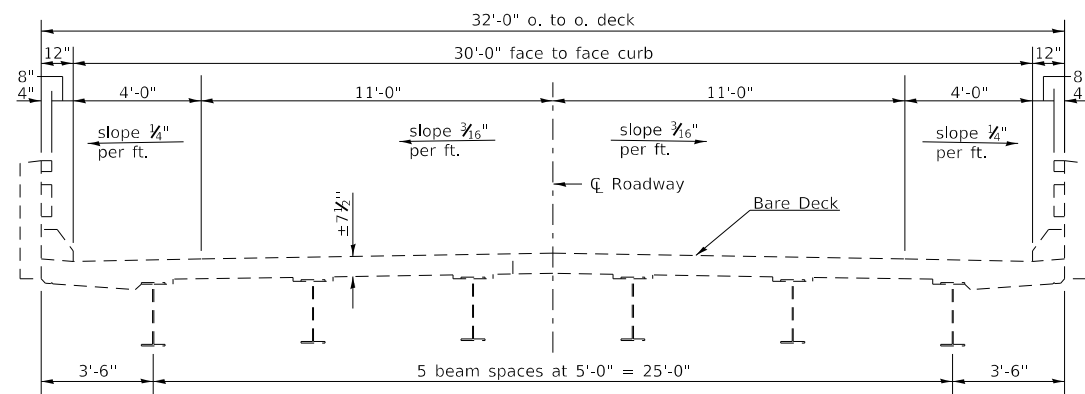
**STATE OF ILLINOIS  
DEPARTMENT OF TRANSPORTATION**

**BUTT JOINT DETAIL**

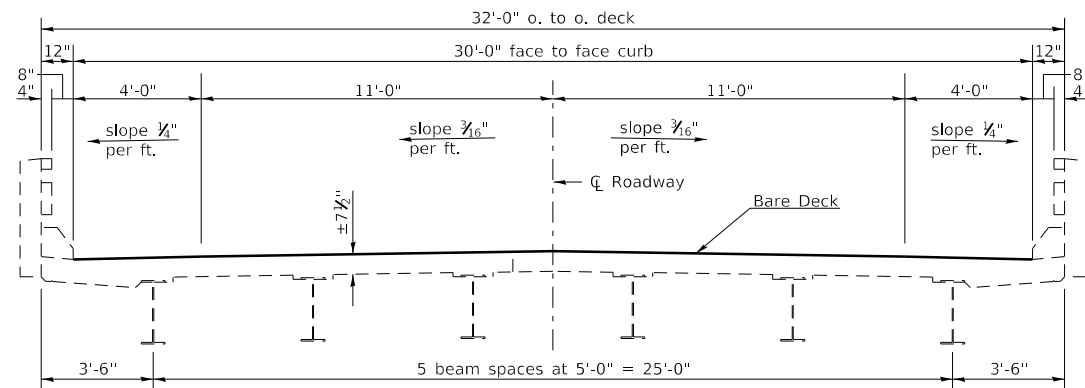
SCALE: \_\_\_\_\_ SHEET \_\_\_\_\_ OF \_\_\_\_\_ SHEETS STA. \_\_\_\_\_ TO STA. \_\_\_\_\_

F.A. RTE.	SECTION	COUNTY	TOTAL SHEETS	SHEET NO.
*	D9 BRIDGE REPAIR 2020-2	JOHNSON	34	17
				CONTRACT NO. 78730
ILLINOIS FED. AID PROJECT				

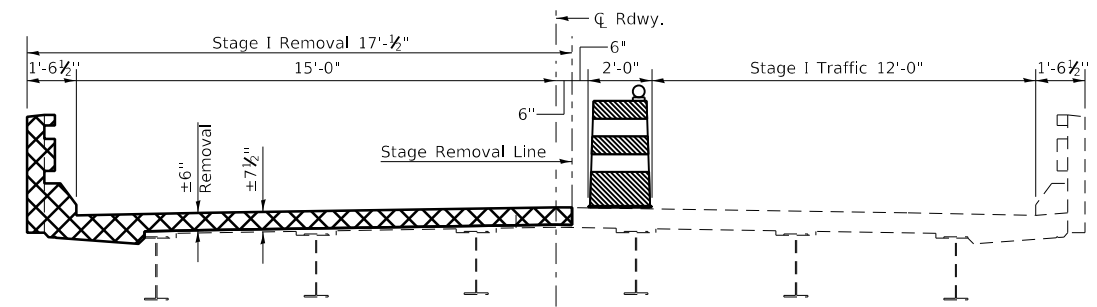




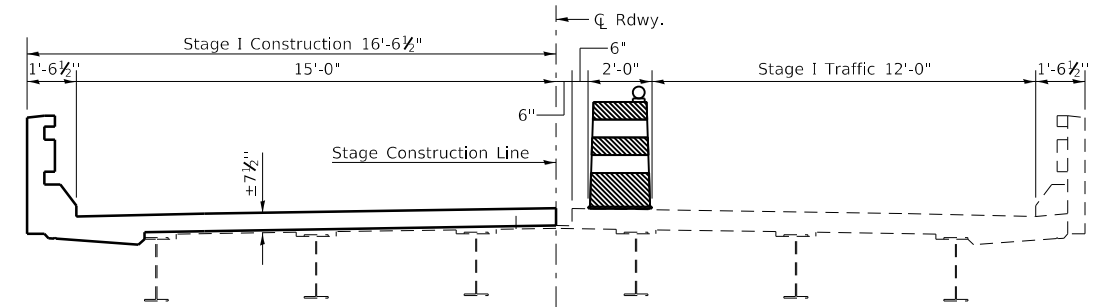
EXISTING CROSS SECTION  
(Looking East)



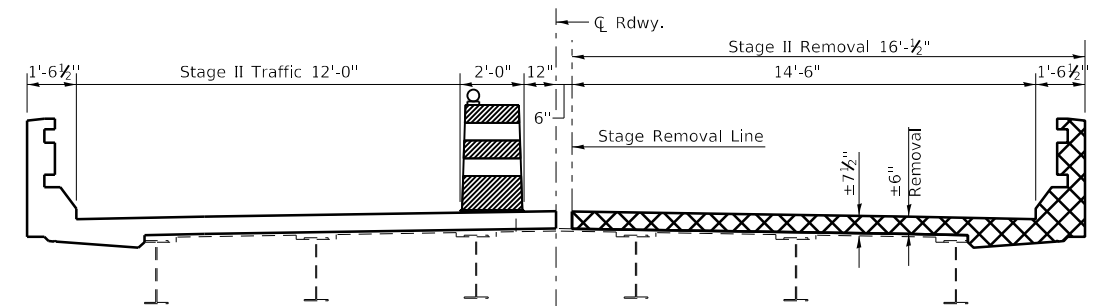
PROPOSED CROSS SECTION  
(Looking East)



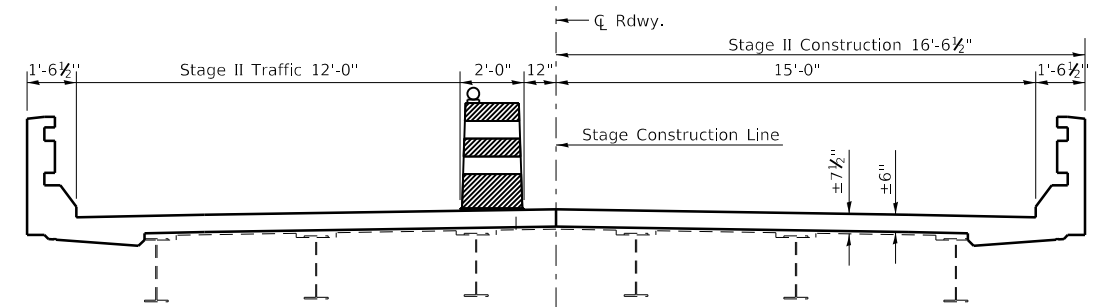
STAGE I REMOVAL  
(At Joint Locations Only)



STAGE I CONSTRUCTION  
(At Joint Locations Only)



STAGE II REMOVAL  
(At Joint Locations Only)



STAGE II CONSTRUCTION  
(At Joint Locations Only)

Note:  
All Edges Shall Have 3/4" Chamfer

Concrete Removal

\* F.A.P. 726 / F.A.S. 932 (IL 37 / IL 147)

MODEL: Default  
FILE: Model: 1920200000.dwg  
PROJECT: 1920200000.dwg  
DRAWING: 1920200000.dwg  
DATE: 4/24/2020

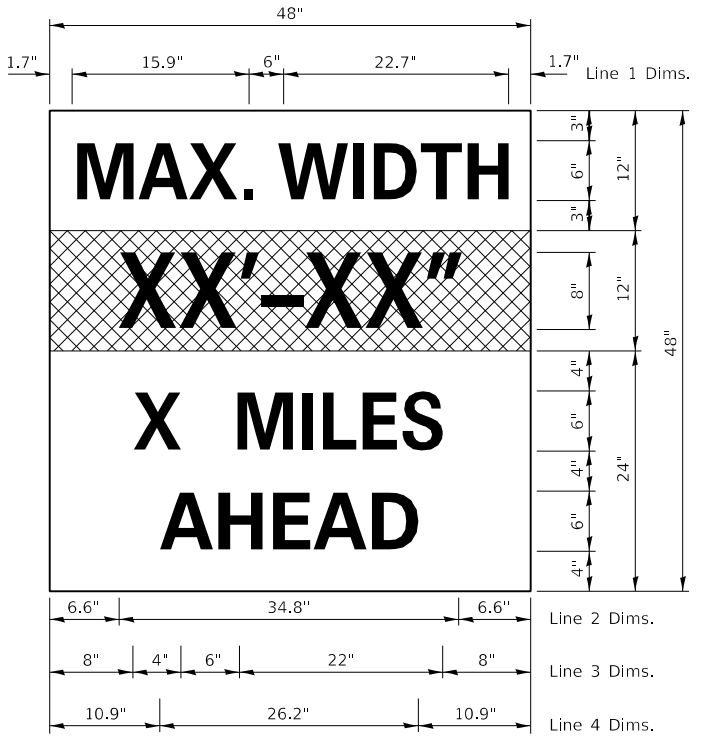
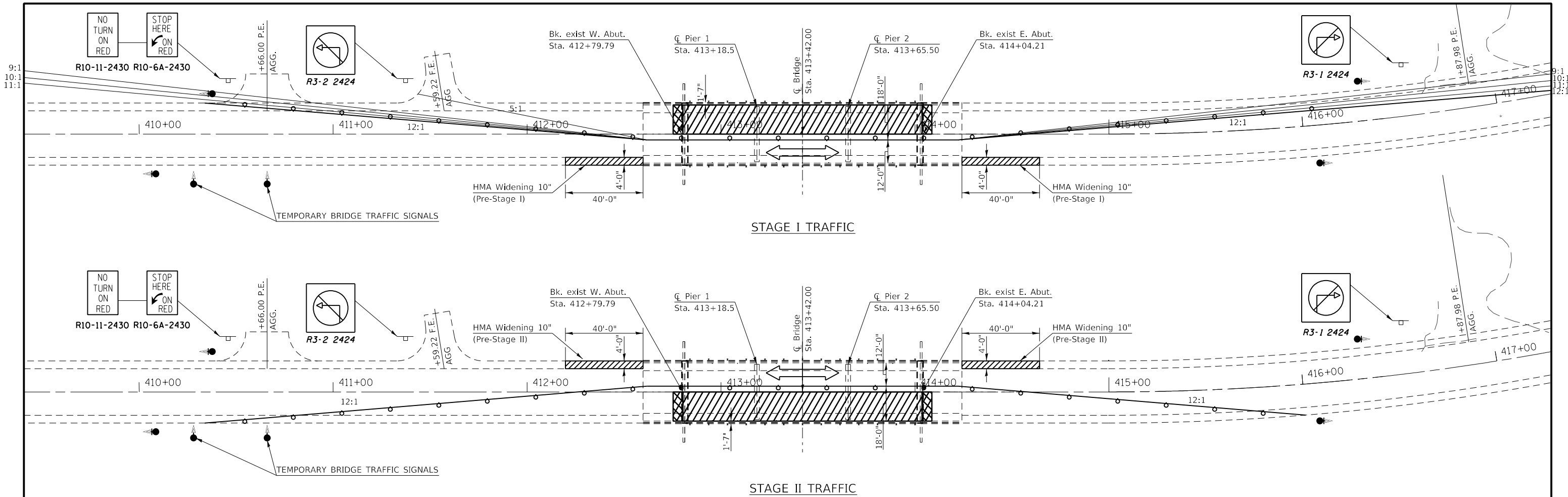
USER NAME = porterc	DESIGNED - _____	REVISED - _____
DRAWN - _____	REVISIONS - _____	
PLOT SCALE = 6.0013' / in.	CHECKED - _____	REVISED - _____
PLOT DATE = 4/24/2020	DATE - _____	REVISED - _____

STATE OF ILLINOIS  
DEPARTMENT OF TRANSPORTATION

STAGING SN. 044-0025

SCALE: \_\_\_\_\_ SHEET \_\_\_\_\_ OF \_\_\_\_\_ SHEETS STA. \_\_\_\_\_ TO STA. \_\_\_\_\_

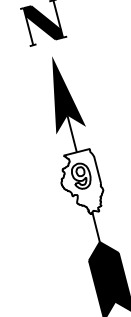
F.A. RTE.	SECTION	COUNTY	TOTAL SHEETS	SHEET NO.
*	D9 BRIDGE REPAIR 2020-2	JOHNSON	34	19
			CONTRACT NO. 78730	
ILLINOIS FED. AID PROJECT				



**W12-I103**  
 W12-I103, No Border  
 "MAX WIDTH" 6D, No Border, Black on White  
 "XX'-XX'" 8D, No Border, Black on Orange  
 "X MILES" 6D, No Border, Black on White  
 "AHEAD" 6D, No Border, Black on White

**Notes for Max Width Sign:**

1. Install a Max Width Sign each direction on IL 147 to give traffic approaching work zone enough advance notice to change routes if needed. Exact locations as directed by engineer.
2. The contractor shall furnish the posts and erect the signs at the locations directed by the engineer. All signs shall be post mounted.
3. The noted work, including signs, posts, hardware and labor shall be included in the contract unit price, each, for Traffic Control and Protection, Std. 701316, no other compensation will be allowed.
4. The width shown on the W12-I103 sign shall be 18" less than what is shown in the staged lane widths or as directed by the Engineer.
5. The "X" MILES AHEAD will be determined by the engineer.



**LEGEND:**

- WORK AREA
- TEMPORARY RAMP

MODEL: D:\full...  
 FILE: M:\E...  
 PROJECT: 78730\CAD\Drawings\DOT\Office\Drawings\9\Projects\78730\CAD\Drawings\DOT\78730-sheet2.dwg

\* F.A.P. 726 / F.A.S. 932 (IL 37 / IL 147)

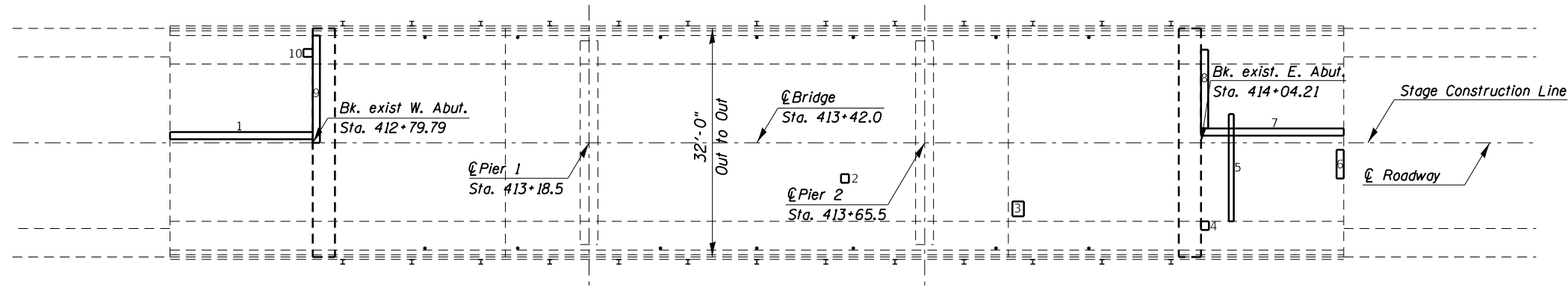
USER NAME = porterc	DESIGNED - _____	REVISED - _____
DRAWN - _____	REVISOR - _____	REVISOR - _____
PLOT SCALE = 49.9997' / in.	CHECKED - _____	REVISOR - _____
PLOT DATE = 4/24/2020	DATE - _____	REVISOR - _____

**STATE OF ILLINOIS  
 DEPARTMENT OF TRANSPORTATION**

**STAGE CONSTRUCTION DETAILS  
 SN 044-0025**

SCALE: \_\_\_\_\_ SHEET \_\_\_\_\_ OF \_\_\_\_\_ SHEETS STA. \_\_\_\_\_ TO STA. \_\_\_\_\_

F.A. RTE.	SECTION	COUNTY	TOTAL SHEETS	SHEET NO.
*	D9 BRIDGE REPAIR 2020-2	JOHNSON	34	20
			CONTRACT NO. 78730	
ILLINOIS FED. AID PROJECT				



Patch Number	Station	Offset From $\bar{C}$ (Foot)	Length (Foot)	Width (Foot)	Area (Sq. Ft.)	Area (Sq. Yd.)
1	412 + 59.79	0.50	20.00	1.00	20.00	2.22
2	413 + 58.80	1.23	1.10	1.10	1.21	0.13
3	413 + 77.79	8.20	1.60	2.10	3.36	0.37
4	414 + 04.21	11.00	1.10	1.20	1.32	0.15
5	414 + 08.11	4.00	1.30	15.00	19.50	2.17
6	414 + 23.21	1.00	1.00	4.00	4.00	0.44
7	414 + 04.21	1.00	20.00	1.00	20.00	2.22
8	414 + 04.21	2.00	1.00	11.00	11.00	1.22
9	412 + 79.79	0.00	1.00	15.00	15.00	1.67
10	412 + 78.49	12.00	1.30	1.10	1.43	0.16
Total					10.75	



MODEL: Default  
 FILE NAME: P:\Vlanroon\dot\illmate\gov\FW\DOT\Documents\DOT - Offices\District\_9\Projects\78730\CADD\Detail\CAD\Sheet\0978730-09sheet2.dgn

\* F.A.P. 726 / F.A.S. 932 (IL 37 / IL 147)

	USER NAME = porterc	DESIGNED - _____	REVISED - _____	<b>STATE OF ILLINOIS DEPARTMENT OF TRANSPORTATION</b>	<b>SN 044-0025 PATCHING DETAILS</b>	F.A. RTE:	SECTION	COUNTY	TOTAL SHEETS	SHEET NO.	
	PLOT SCALE = 20.0829 ' / in.	CHECKED - _____	REVISED - _____			*	D9 BRIDGE REPAIR 2020-2	JOHNSON	34	21	
	PLOT DATE = 4/24/2020	DATE - _____	REVISED - _____			SCALE: _____ SHEET ___ OF ___ SHEETS STA. _____ TO STA. _____		ILLINOIS FED. AID PROJECT			
							CONTRACT NO. 78730				



**GENERAL NOTES**

Plan dimensions and details relative to existing plans are subject to nominal construction variations. The Contractor shall field verify existing dimensions and details affecting new construction and make necessary approved adjustments prior to construction or ordering of materials. Such variations shall not be cause for additional compensation for a change in scope of the work, however, the Contractor will be paid for the quantity actually furnished at the unit price bid for the work.

Joint openings shall be adjusted according to Article 520.04 of the Std. Specs. when the deck is poured at an ambient temperature other than 50°F.

Prior to pouring the new concrete deck section, all heavy or loose rust, loose mill scale, and other loose or potentially detrimental foreign material shall be removed from the surfaces in contact with concrete. Tightly adhered paint may remain unless otherwise noted. Removal shall be accomplished by methods that will not damage the steel and the cost will be included in the pay item covering removal of the existing concrete.

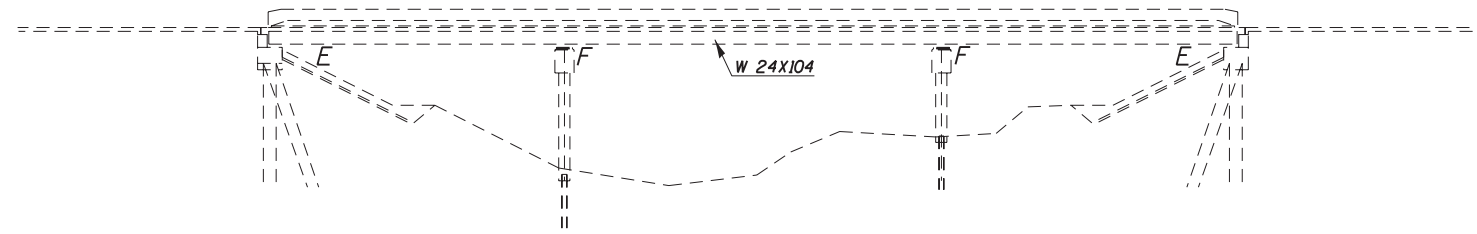
Existing reinforcement bars extending into the removal area shall be cleaned, straightened and incorporated into the new construction. Any reinforcement bars that are damaged during concrete removal shall be replaced with an approved bar splicer or anchorage system. Cost included with Concrete Removal.

Reinforcement bars designated (E) shall be epoxy coated.

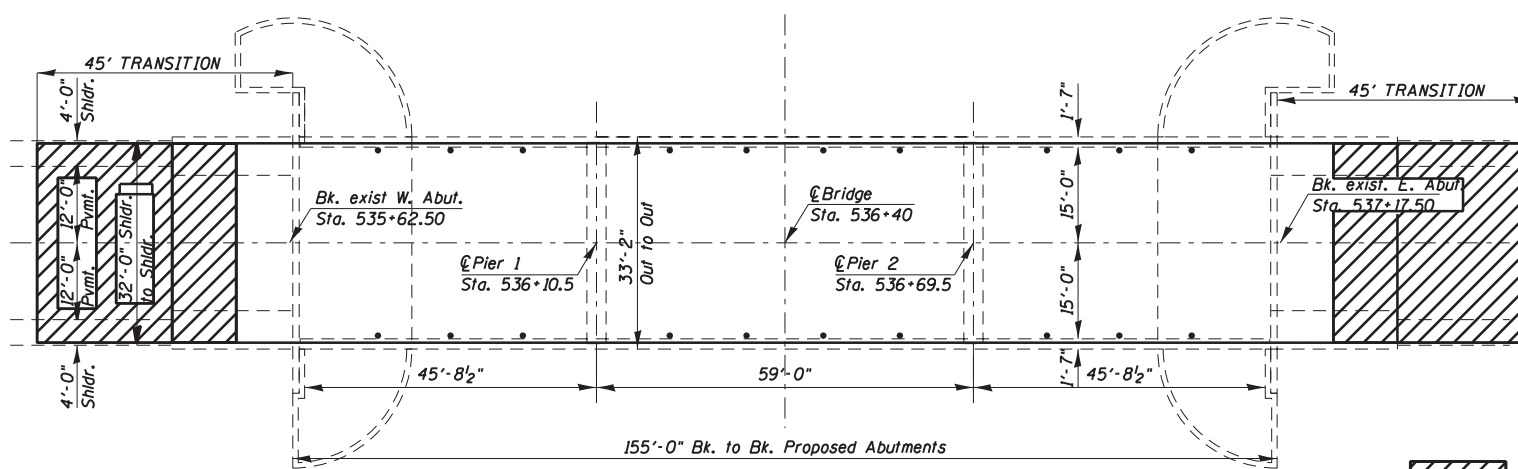
Areas of deck repairs shown are estimated. The Engineer shall show actual locations of deck repairs on as-built plans.

The cost to remove and re-erect the terminals attached to the parapets shall be included in the cost of Concrete Removal.

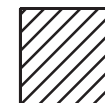
The deck surface shall have its final finish dry tined according to Article 420.09(e)(1) of the Standard Specifications. Cost included with Concrete Superstructure.



**ELEVATION**



**PLAN**



HMA SURFACE REMOVAL - BUTT JOINT



*David Carl Puzey* 04/28/2020  
Expires: 11/30/2020

**TOTAL BILL OF MATERIAL**

ITEM	UNIT	QUANTITY
Deck Slab Repair (Partial Depth)	Sq. Yd.	53
Reinforcement Bars, Epoxy Coated	Pound	660
Approach Slab Repair (Partial Depth)	Sq. Yd.	10
Bar Splicer	Each	12
Concrete Superstructure	Cu. Yd.	5.1
Concrete Removal	Cu. Yd.	4.8
Waterproofing Membrane System	Sq. Yd.	552
Hot-Mix Asphalt Surface Course, IL-9.5 FG, N70	Ton	75
HMA Base Course Widening, 10"	Sq. Yd.	72
Paved Shoulder Removal	Sq. Yd.	72
Bituminous Materials (Tack Coat)	Pound	375
HMA Surface Removal - Butt Joint	Sq. Yd.	285
Temporary Ramp	Sq. Yd.	11
Protective Coat	Sq. Yd.	18
Preformed Joint Strip Seal	Foot	64

\* On New Concrete Only

**BRIDGE REPAIRS  
IL 147 OVER BAY CREEK  
JOHNSON COUNTY  
S.N. 044-0027**

\* F.A.P. 726 / F.A.S. 932 (IL 37 / IL 147)

MODEL: Default  
FILE NAME: dx:\planroom\dot\illinois\gov\FWIDOT\Documents\DOT\Office\District 9\Projects\18730\CAD\Drawings\DOT\18730-sheets.dgn

USER NAME = portercw	DESIGNED - _____	REVISED - _____
	DRAWN - _____	REVISED - _____
PLOT SCALE = 30.0356' / in.	CHECKED - _____	REVISED - _____
PLOT DATE = 4/24/2020	DATE - _____	REVISED - _____

**STATE OF ILLINOIS  
DEPARTMENT OF TRANSPORTATION**

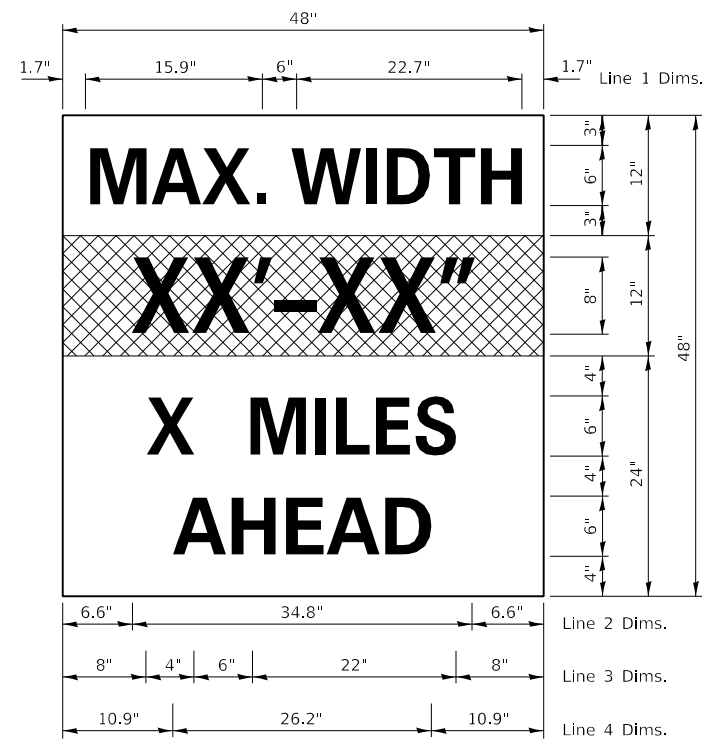
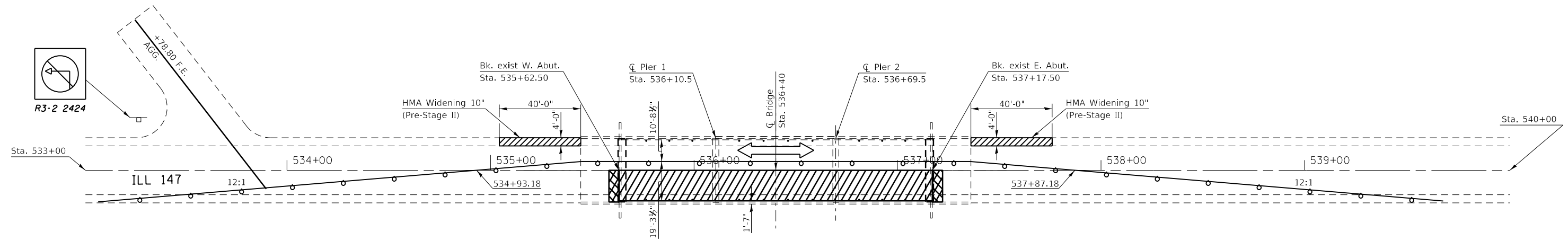
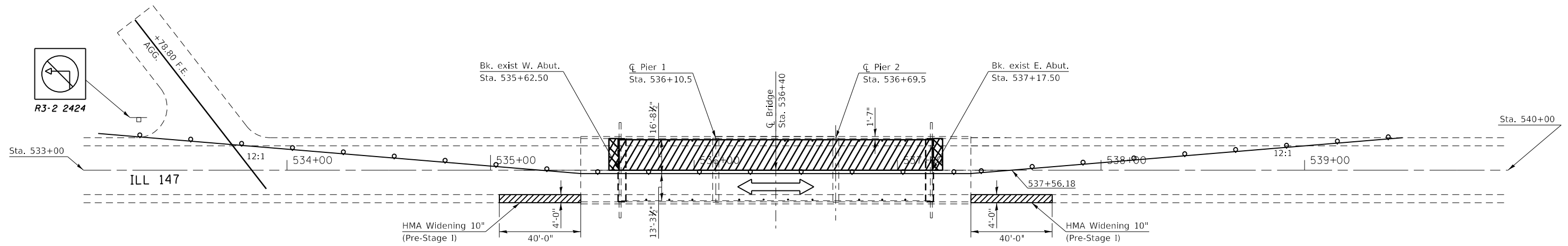
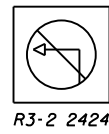
**SN 044-0027**

SCALE: \_\_\_\_\_ SHEET \_\_\_\_\_ OF \_\_\_\_\_ SHEETS STA. \_\_\_\_\_ TO STA. \_\_\_\_\_

F.A. RTE.	SECTION	COUNTY	TOTAL SHEETS	SHEET NO.
*	D9 BRIDGE REPAIR 2020-2	JOHNSON	34	23
			CONTRACT NO. 78730	
ILLINOIS / FED. AID PROJECT				







**W12-I103**

W12-I103, No Border  
 "MAX WIDTH" 6D, No Border, Black on White  
 "XX'-XX'" 8D, No Border, Black on Orange  
 "X MILES" 6D, No Border, Black on White  
 "AHEAD" 6D, No Border, Black on White

**Notes for Max Width Sign:**

1. Install a Max Width Sign each direction on IL 147 to give traffic approaching work zone enough advance notice to change routes if needed. Exact locations as directed by engineer.
2. The contractor shall furnish the posts and erect the signs at the locations directed by the engineer. All signs shall be post mounted.
3. The noted work, including signs, posts, hardware and labor shall be included in the contract unit price, each, for Traffic Control and Protection, Std. 701316, no other compensation will be allowed.
4. The width shown on the W12-I103 sign shall be 18" less than what is shown in the staged lane widths or as directed by the Engineer.
5. The "X" MILES AHEAD will be determined by the engineer.



**LEGEND:**

- WORK AREA
- TEMPORARY RAMP

\* F.A.P. 726 / F.A.S. 932 (IL 37 / IL 147)

MODEL: D:\full...  
 FILE: M:\E...  
 PROJECT: 78730\CADD\Drawings\DOT Documents\Sheet 9\Project\78730\CADD\Drawings\DOT Documents\Sheet 9\78730-sheet2.dgn

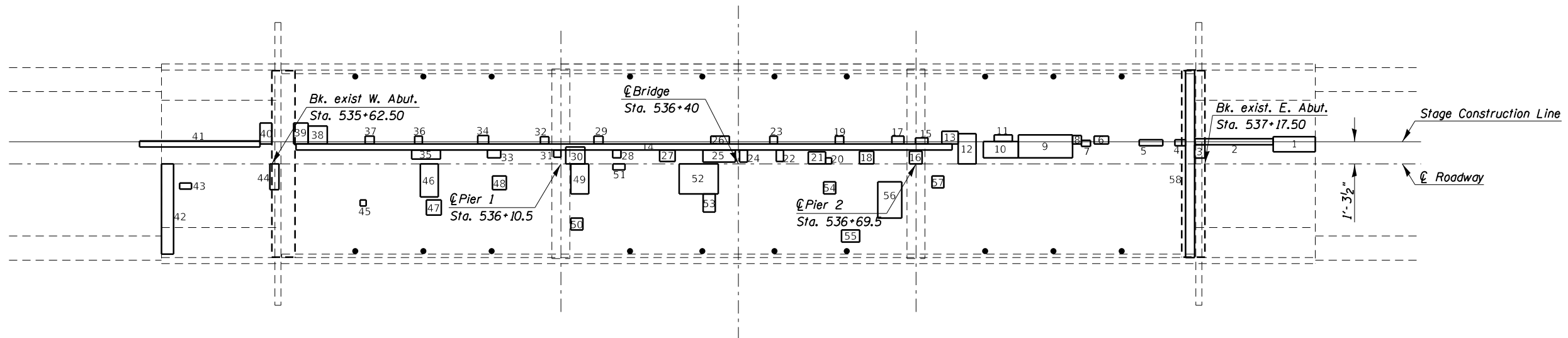
USER NAME = porterc	DESIGNED - _____	REVISED - _____
DRAWN - _____	REVISIONS - _____	REVISIONS - _____
PLOT SCALE = 49.9995' / in.	CHECKED - _____	REVISIONS - _____
PLOT DATE = 4/24/2020	DATE - _____	REVISIONS - _____

**STATE OF ILLINOIS  
 DEPARTMENT OF TRANSPORTATION**

**STAGE CONSTRUCTION DETAILS  
 SN 044-0027**

SCALE: \_\_\_\_\_ SHEET \_\_\_\_\_ OF \_\_\_\_\_ SHEETS STA. \_\_\_\_\_ TO STA. \_\_\_\_\_

F.A. RTE.	SECTION	COUNTY	TOTAL SHEETS	SHEET NO.
*	D9 BRIDGE REPAIR 2020-2	JOHNSON	34	25
			CONTRACT NO. 78730	
ILLINOIS FED. AID PROJECT				



Patch Number	Station	Offset From $\bar{C}$ (Foot)	Length (Foot)	Width (Foot)	Area (Sq. Ft.)	Area (Sq. Yd.)
1	537 + 28.85	2.00	7.00	2.50	17.50	1.94
2	537 + 15.85	2.80	13.00	1.00	13.00	1.44
3	537 + 15.80	0.97	1.70	2.20	3.74	0.42
4	537 + 12.50	3.00	1.80	1.00	1.80	0.20
5	537 + 06.60	3.00	3.90	1.00	3.90	0.43
6	536 + 99.10	3.30	2.40	1.30	3.12	0.35
7	536 + 97.00	2.90	1.50	1.00	1.50	0.17
8	536 + 95.50	3.30	1.50	1.40	2.10	0.23
9	536 + 86.50	1.00	9.00	3.80	34.20	3.80
10	536 + 80.70	1.00	5.80	2.70	15.66	1.74
11	536 + 82.50	3.30	3.00	1.10	3.30	0.37
12	536 + 76.50	0.00	3.00	5.00	15.00	1.67
13	536 + 73.80	3.30	2.70	2.10	5.67	0.63
14	535 + 66.50	2.30	109.00	1.00	109.00	12.11
15	536 + 69.40	3.30	2.10	1.00	2.10	0.23
16	536 + 68.40	0.00	2.60	2.10	5.46	0.61
17	536 + 65.50	3.30	2.00	1.30	2.60	0.29
18	536 + 60.10	0.00	2.40	2.10	5.04	0.56
19	536 + 56.10	3.30	1.40	1.30	1.82	0.20
20	536 + 54.50	0.00	1.00	1.00	1.00	0.11
21	536 + 51.60	0.00	2.00	2.90	5.80	0.64
22	536 + 46.30	0.40	1.20	1.90	2.28	0.25
23	536 + 45.20	3.30	1.30	1.30	1.69	0.19
24	536 + 40.20	0.30	1.30	2.00	2.60	0.29
25	536 + 34.10	0.30	5.40	2.00	10.80	1.20
26	536 + 35.40	3.30	3.10	1.30	4.03	0.45
27	536 + 26.90	0.40	1.90	2.60	4.94	0.55
28	536 + 19.10	1.00	1.40	1.30	1.82	0.20
29	536 + 16.00	3.30	1.50	1.30	1.95	0.22
30	536 + 11.30	0.00	3.20	2.80	8.96	1.00
31	536 + 09.30	1.10	1.20	1.20	1.44	0.16
32	536 + 07.10	3.30	1.40	1.20	1.68	0.19
33	535 + 98.30	1.00	2.20	1.30	2.86	0.32
34	535 + 96.70	3.30	1.80	1.40	2.52	0.28
35	535 + 85.70	0.80	4.80	1.50	7.20	0.80
36	535 + 86.20	3.30	1.30	1.30	1.69	0.19
37	535 + 78.00	3.30	1.50	1.30	1.95	0.22
38	535 + 68.50	3.30	3.20	3.00	9.60	1.07
39	535 + 66.10	3.30	2.40	3.50	8.40	0.93
40	535 + 60.50	3.30	2.00	3.50	7.00	0.78
41	535 + 40.50	2.80	20.00	1.00	20.00	2.22
Westbound Total						39.65

Patch Number	Station	Offset From $\bar{C}$ (Foot)	Length (Foot)	Width (Foot)	Area (Sq. Ft.)	Area (Sq. Yd.)
42	535 + 44.15	0.00	2.00	15.00	30.00	3.33
43	535 + 47.15	3.20	2.00	1.00	2.00	0.22
44	535 + 62.15	0.00	1.50	4.30	6.45	0.72
45	535 + 77.15	6.00	1.00	1.00	1.00	0.11
46	535 + 87.15	0.00	3.00	5.50	16.50	1.83
47	535 + 88.15	6.00	2.50	2.50	6.25	0.69
48	535 + 99.15	2.00	2.30	2.30	5.29	0.59
49	536 + 12.15	0.00	3.00	5.00	15.00	1.67
50	536 + 12.15	9.00	2.00	2.00	4.00	0.44
51	536 + 19.15	0.00	2.00	1.00	2.00	0.22
52	536 + 30.15	0.00	6.50	5.00	32.50	3.61
53	536 + 34.15	5.00	3.00	2.00	6.00	0.67
54	536 + 54.15	3.00	2.00	2.00	4.00	0.44
55	536 + 57.15	11.00	3.00	2.00	6.00	0.67
56	536 + 63.15	3.00	4.00	6.00	24.00	2.67
57	536 + 72.15	2.00	2.00	2.00	4.00	0.44
58	537 + 14.30	0.00	1.50	30.00	45.00	5.00
Eastbound Total						23.32



MODEL: D:\p\h\k  
 FILE NAME: d:\p\h\k\9\Projects\78730\CAD\Drawings\CAD\Drawings\078730\Drawings2.dwg

\* F.A.P. 726 / F.A.S. 932 (IL 37 / IL 147)

USER NAME = jporterwc	DESIGNED - _____	REVISED - _____
PLOT SCALE = 20.0733 ' / in.	DRAWN - _____	REVISED - _____
PLOT DATE = 4/24/2020	CHECKED - _____	REVISED - _____
	DATE - _____	REVISED - _____

**STATE OF ILLINOIS**  
**DEPARTMENT OF TRANSPORTATION**

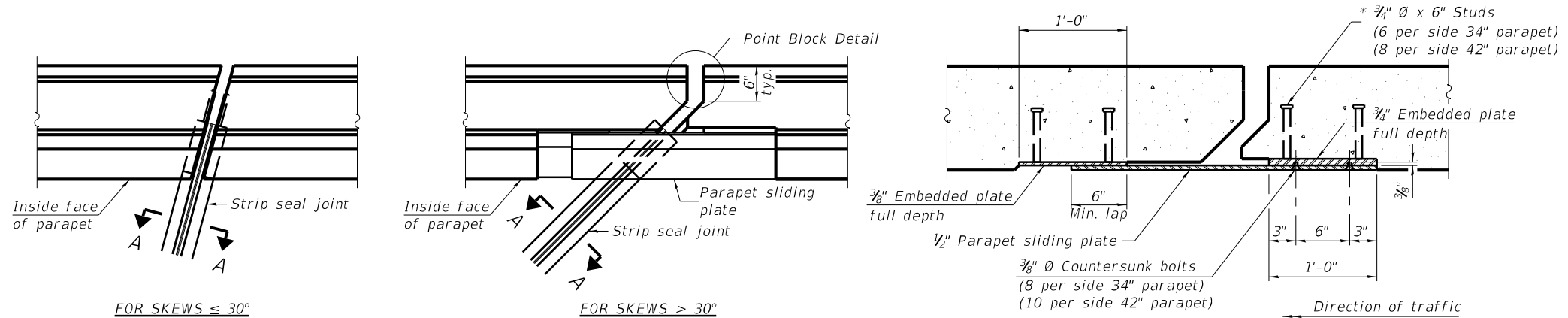
**SN 044-0027 PATCHING DETAILS**

SCALE: \_\_\_\_\_ SHEET \_\_\_\_\_ OF \_\_\_\_\_ SHEETS STA. \_\_\_\_\_ TO STA. \_\_\_\_\_

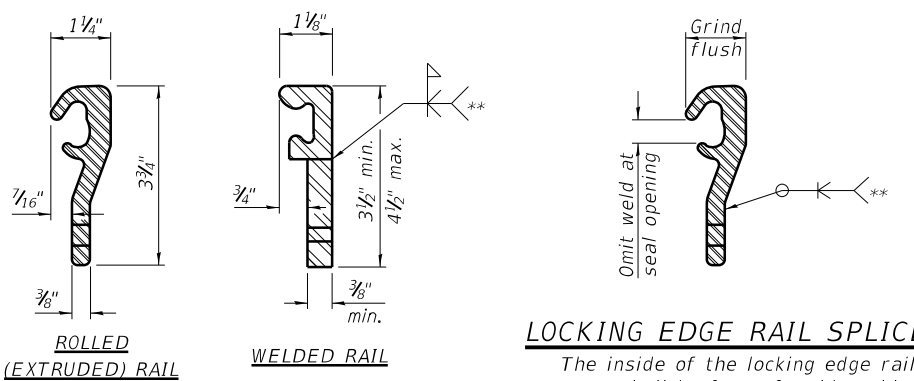
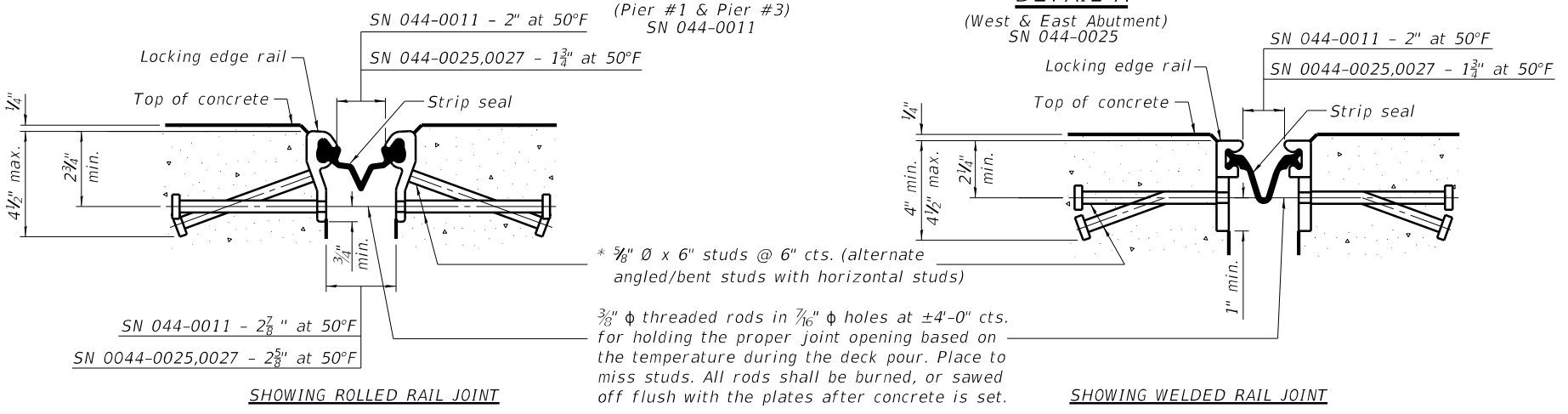
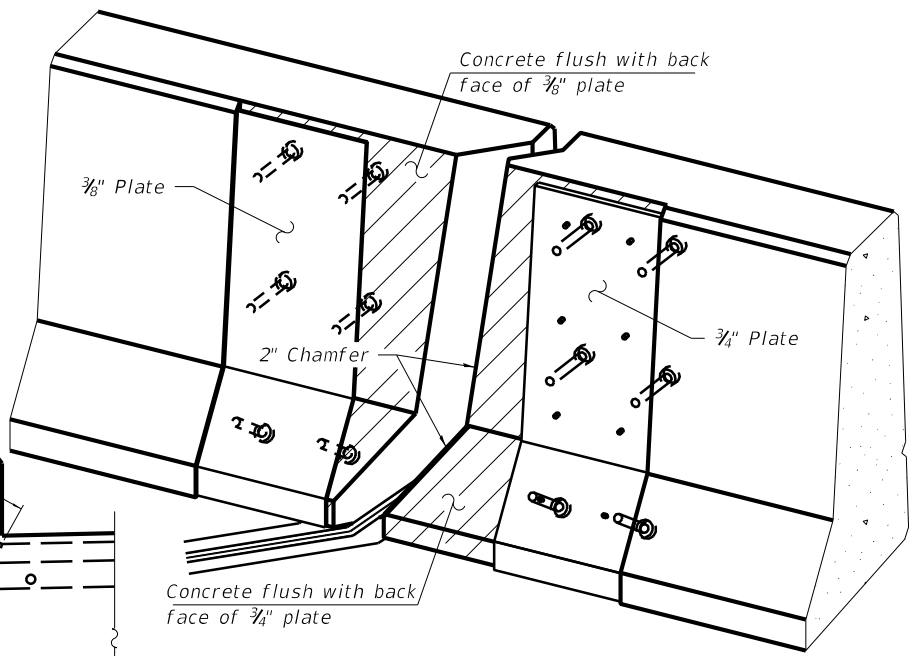
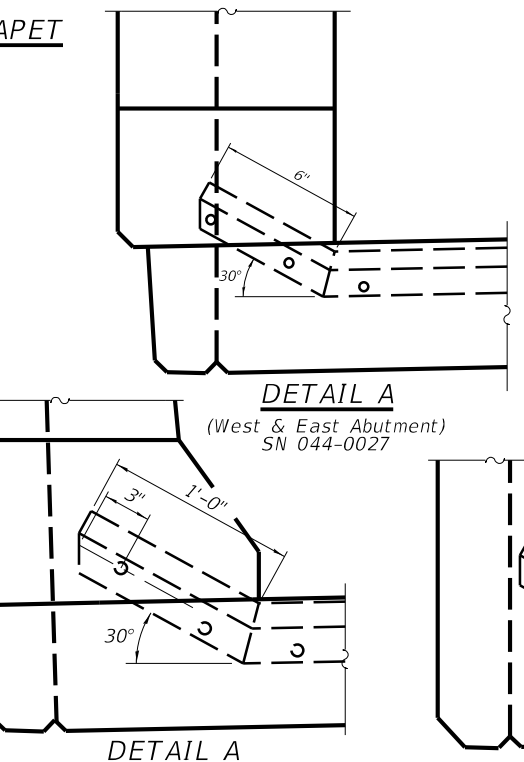
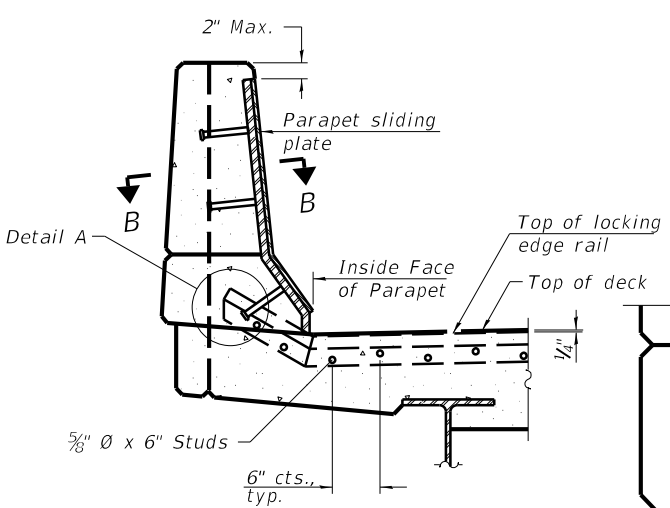
F.A. RTE. *	SECTION	COUNTY	TOTAL SHEETS	SHEET NO.
	D9 BRIDGE REPAIR 2020-2	JOHNSON	34	26
CONTRACT NO. 78730				
ILLINOIS FED. AID PROJECT				







**Notes:**  
 The strip seal shall be made continuous and shall have a minimum thickness of  $\frac{1}{4}$ ". The configuration of the strip seal shall match the configuration of the locking edge rails. Open or "webbed" strip seal gland configurations are not permitted. The gland shall be sized for a maximum rated movement of 4 inches.  
 The locking edge rails depicted are configured for typical applications and are conceptual only. The actual configuration of the locking edge rails and matching strip seal may vary from manufacturer to manufacturer provided they fit the application and meet the minimum anchorage shown. Flanged edge rails, however, will not be allowed.  
 The manufacturer's recommended installation methods shall be followed.  
 All steel components shall be galvanized after fabrication according to Article 520.03 of the Standard Specifications.  
 The Maximum space between locking edge rail segments shall be  $\frac{3}{16}$ " and sealed with a suitable sealant; however, any rail joint within 10' measured perpendicular to the face of the curb or parapet shall be welded as shown in the locking edge rail splice detail.  
 Cost of parapet sliding plates, embedded plates, and anchorage studs included with Preformed Joint Strip Seal.  
 34" F-shape barrier shown, 42" F-shape similar as noted.  
 The concrete opening below the strip seal will vary based on the locking edge rail chosen by the Contractor. Deck and parapet lengths shown elsewhere in the plans are dimensioned to the concrete opening, not the joint opening, and are based on the rolled locking edge rail. If the Contractor elects to use a different locking edge rail, dimensional adjustments may be required. Such adjustments shall be at no additional cost to the State.



**LOCKING EDGE RAIL SPLICE**  
 The inside of the locking edge rail groove shall be free of weld residue.  
 Rolled rail shown, welded rail similar.

**BILL OF MATERIAL**

Item	Unit	Structure No.			Total
		044-0011	044-0025	044-0027	
Preformed Joint Strip Seal	Foot	251	64	64	379

\* F.A.P. 726 / F.A.S. 932 (IL 37 / IL 147)

MODEL - Definitive  
 FILE - I:\Users\pporter\Documents\DOT - Office\Detail - 0\Projects\2020\CAD\Drawings\0272730-Sheet2.dgn  
 MODEL - Definitive  
 FILE - I:\Users\pporter\Documents\DOT - Office\Detail - 0\Projects\2020\CAD\Drawings\0272730-Sheet2.dgn

USER NAME = porterwc	DESIGNED - ASH	REVISED -
PLOT SCALE = 55.0049 ' / in.	DRAWN - ASH	REVISED -
PLOT DATE = 4/24/2020	CHECKED - MAS	REVISED -
	DATE - 10/01/2019	REVISED -

**STATE OF ILLINOIS**  
**DEPARTMENT OF TRANSPORTATION**

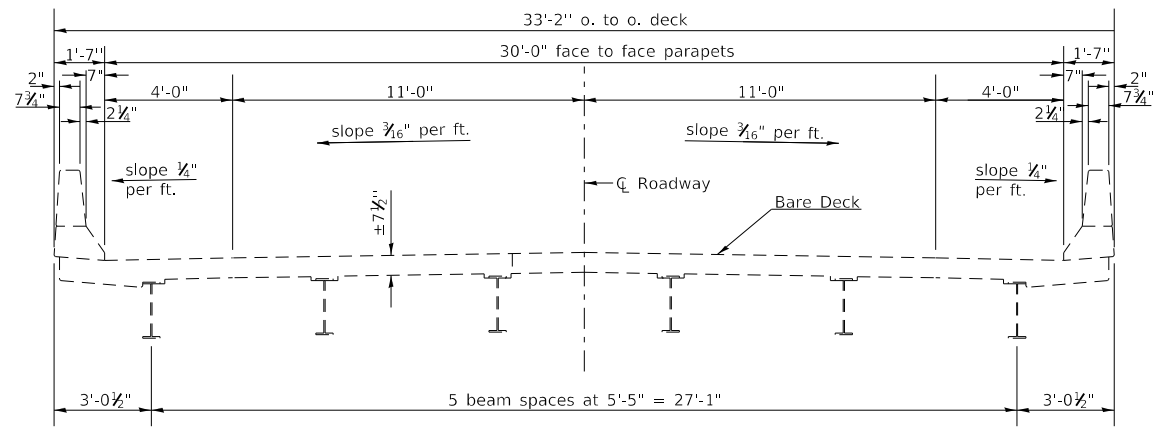
**PREFORMED JOINT STRIP SEAL**  
**SN 044-0011,0025,0027**

SCALE: \_\_\_\_\_ SHEET \_\_\_\_\_ OF \_\_\_\_\_ SHEETS STA. \_\_\_\_\_ TO STA. \_\_\_\_\_

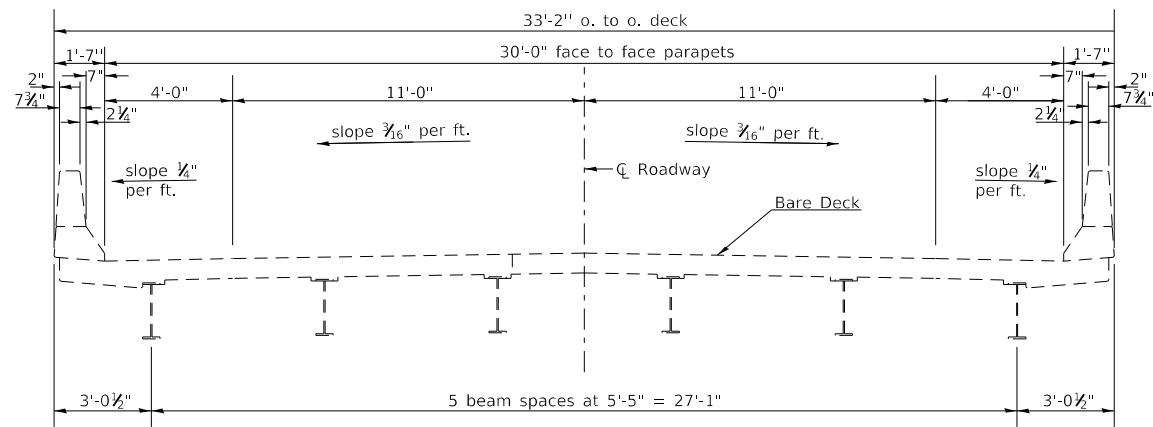
F.A. RTE.	SECTION	COUNTY	TOTAL SHEETS	SHEET NO.
*	D9 BRIDGE REPAIR 2020-2	JOHNSON	34	29

CONTRACT NO. 78730  
 ILLINOIS FED. AID PROJECT

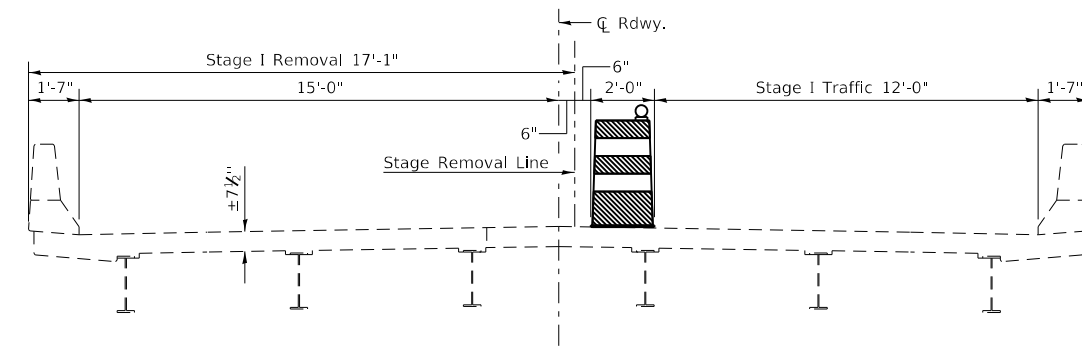




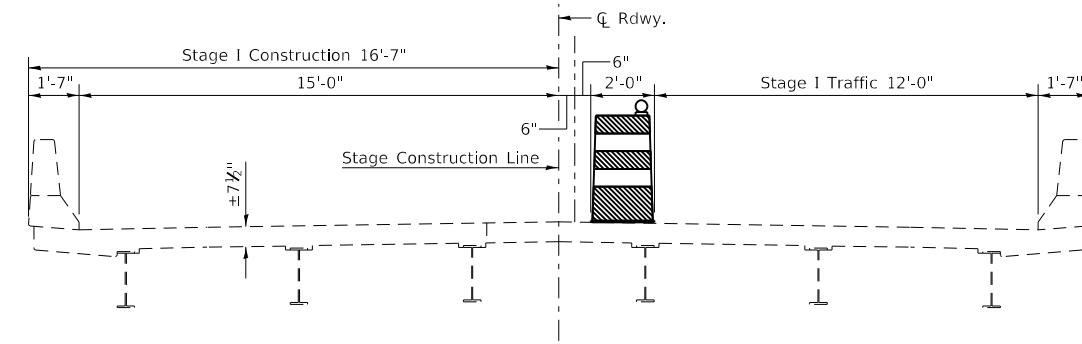
EXISTING CROSS SECTION  
(Looking East)



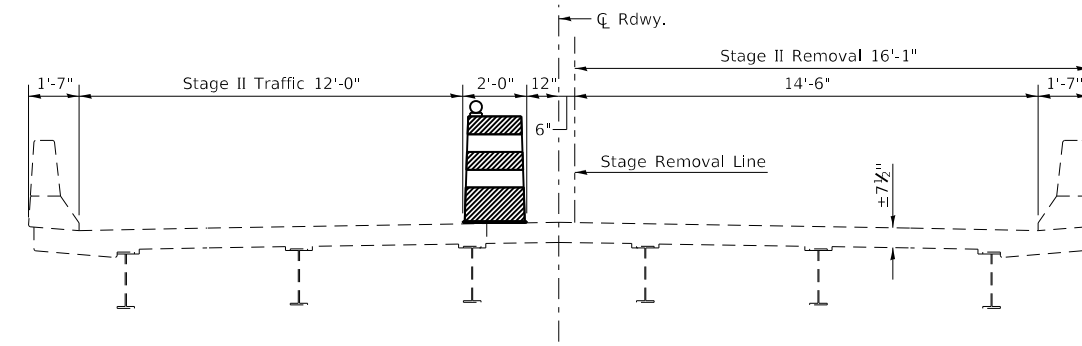
PROPOSED CROSS SECTION  
(Looking East)



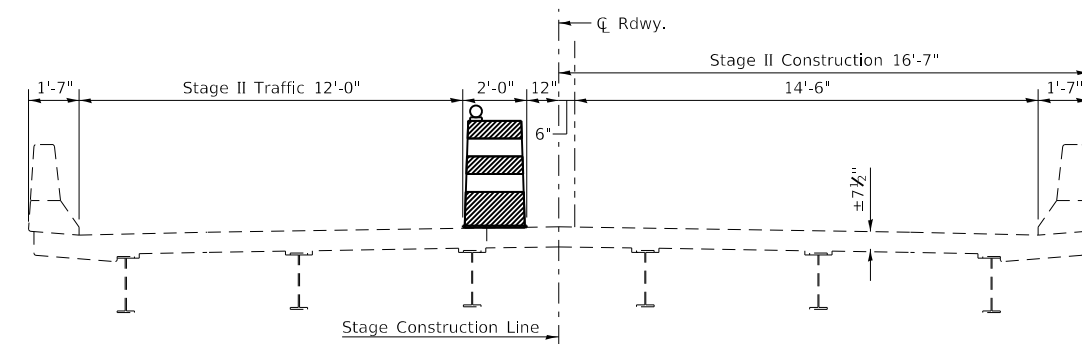
STAGE I REMOVAL



STAGE I CONSTRUCTION



STAGE II REMOVAL



STAGE II CONSTRUCTION

Note:  
All Edges Shall Have 3/4" Chamfer

\* F.A.P. 726 / F.A.S. 932 (IL 37 / IL 147)

MODEL: Default  
 FILE NAME: p:\projects\2020\2020-2\bridge\staging\staging.dgn  
 PROJECT: 2020-2\bridge\staging\staging.dgn  
 OFFICE: District Office  
 DATE: 4/24/2020

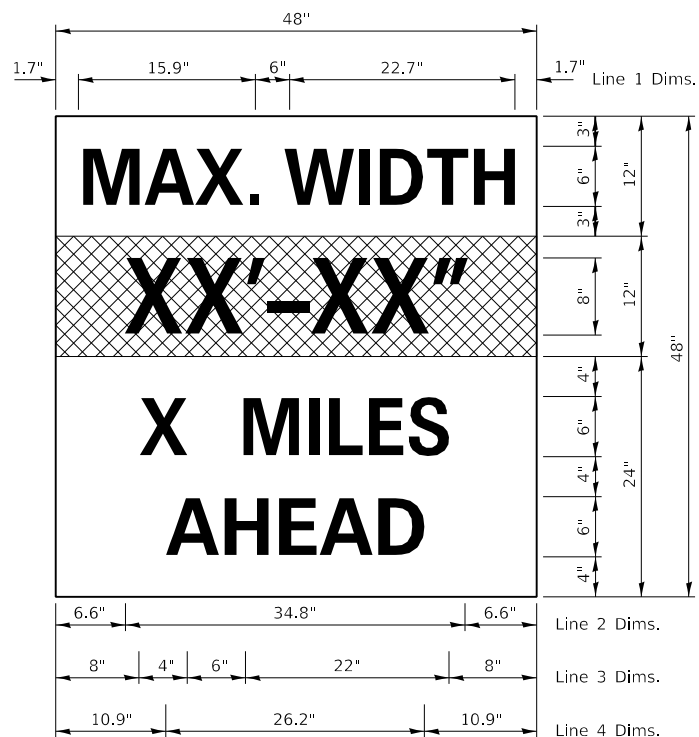
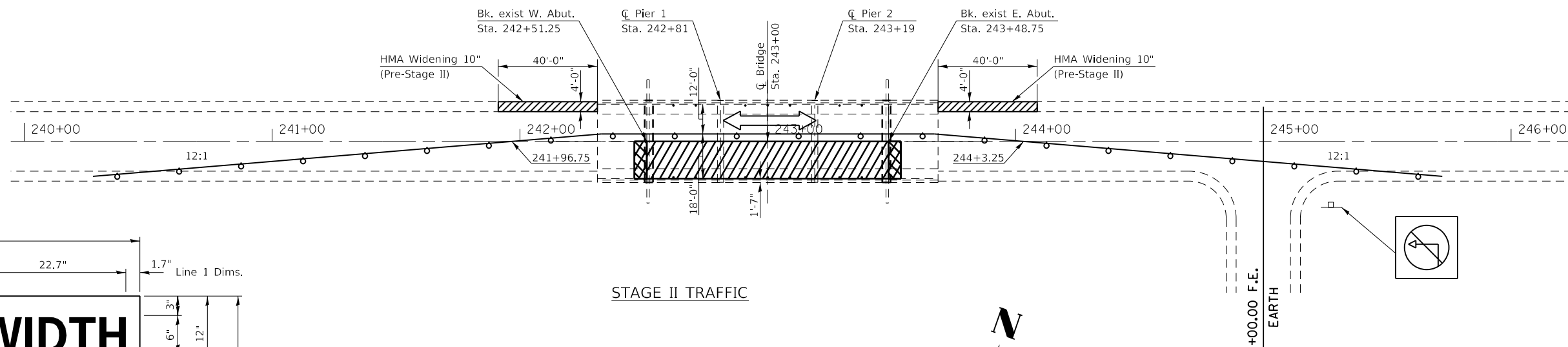
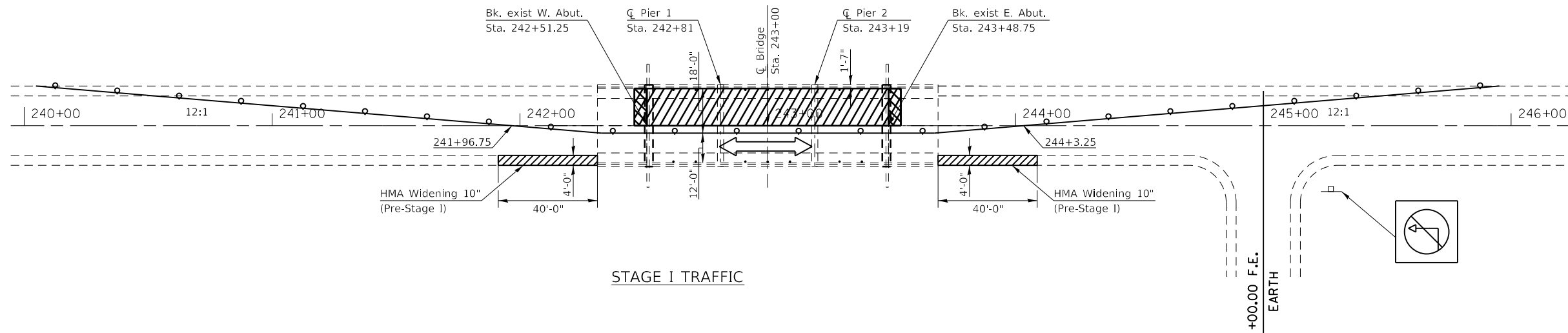
USER NAME = portercw	DESIGNED - _____	REVISED - _____
DRAWN - _____	REVISIONS - _____	REVISIONS - _____
PLOT SCALE = 6.0047' / in.	CHECKED - _____	REVISIONS - _____
PLOT DATE = 4/24/2020	DATE - _____	REVISIONS - _____

STATE OF ILLINOIS  
DEPARTMENT OF TRANSPORTATION

STAGING SN. 044-0054

SCALE: \_\_\_\_\_ SHEET \_\_\_\_\_ OF \_\_\_\_\_ SHEETS STA. \_\_\_\_\_ TO STA. \_\_\_\_\_

F.A. RTE.	SECTION	COUNTY	TOTAL SHEETS	SHEET NO.
*	D9 BRIDGE REPAIR 2020-2	JOHNSON	34	31
ILLINOIS FED. AID PROJECT			CONTRACT NO. 78730	



**W12-I103**

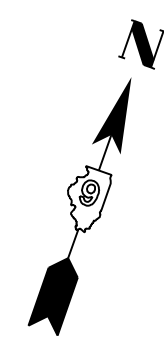
W12-I103, No Border  
 "MAX WIDTH" 6D, No Border, Black on White  
 "XX'-XX'" 8D, No Border, Black on Orange  
 "X MILES" 6D, No Border, Black on White  
 "AHEAD" 6D, No Border, Black on White

**Notes for Max Width Sign:**

1. Install a Max Width Sign each direction on IL 147 to give traffic approaching work zone enough advance notice to change routes if needed. Exact locations as directed by engineer.
2. The contractor shall furnish the posts and erect the signs at the locations directed by the engineer. All signs shall be post mounted.
3. The noted work, including signs, posts, hardware and labor shall be included in the contract unit price, each, for Traffic Control and Protection, Std. 701316, no other compensation will be allowed.
4. The width shown on the W12-I103 sign shall be 18" less than what is shown in the staged lane widths or as directed by the Engineer.
5. The "X" MILES AHEAD will be determined by the engineer.

**LEGEND:**

- WORK AREA
- TEMPORARY RAMP



MODEL: Defaul  
 FILE: \\sdrfs-pw\planning\comps.dat\Illinois\pwr\W12-I103\Documents\DOT\_Office\Drawings\9\Projects\78730\CADData\CADsheets\0978730-sheet2.dgn

\* F.A.P. 726 / F.A.S. 932 (IL 37 / IL 147)

USER NAME = porterc DESIGNED - _____ DRAWN - _____ PLOT SCALE = 50.0017' / in. CHECKED - _____ PLOT DATE = 4/24/2020 DATE - _____		REVISED - _____ REVISED - _____ REVISED - _____ REVISED - _____		<b>STATE OF ILLINOIS</b> <b>DEPARTMENT OF TRANSPORTATION</b>		<b>STAGE CONSTRUCTION DETAILS</b> <b>SN 044-0054</b>		F.A. RTE. - _____ SECTION - _____ COUNTY - _____ * D9 BRIDGE REPAIR 2020-2 JOHNSON 34 32 CONTRACT NO. 78730	
SCALE: _____ SHEET _____ OF _____ SHEETS STA. _____ TO STA. _____				ILLINOIS FED. AID PROJECT					





