

F.A.U.	SECTION	COUNTY	TOTAL SHEETS	SHEET NO.
9218	18-00081-06-BR	ST. CLAIR	10	1
ILLINOIS CONTRACT NO. 97730				

06-12-2020 LETTING ITEM 125

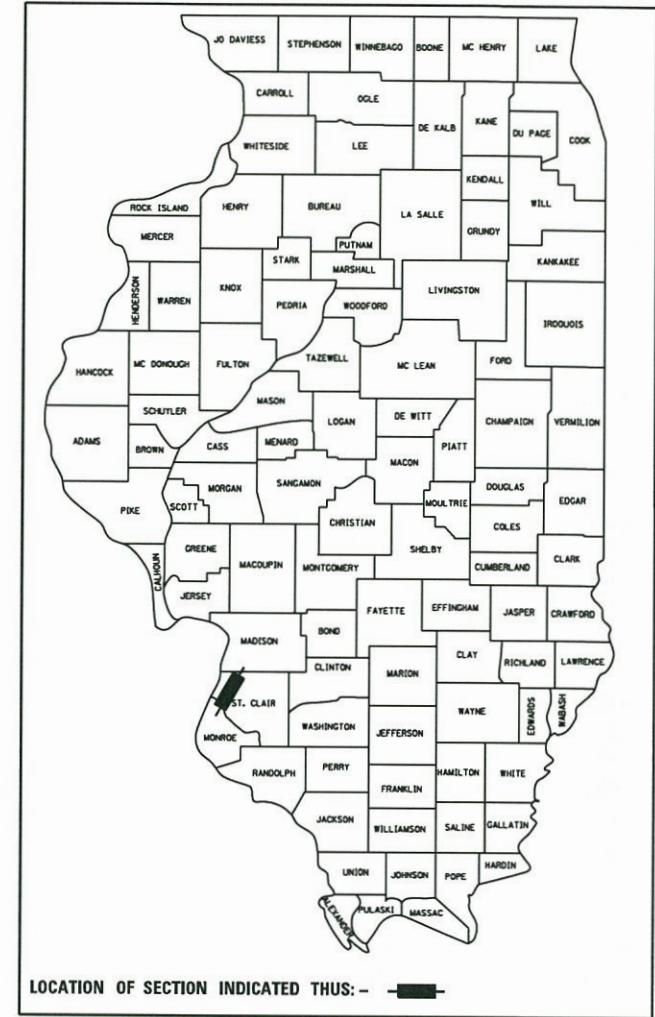
INDEX OF SHEETS

- 1 COVER SHEET
- 2 STANDARDS LIST & GENERAL NOTES
- 3 SUMMARY OF QUANTITIES
- 4 TYPICAL SECTIONS
- 5 SCHEDULE OF QUANTITIES
- 6 EXISTING PLAN
- 7 DETOUR PLAN
- 8 GUARDRAIL DETAIL
- 9-10 BRIDGE PLANS

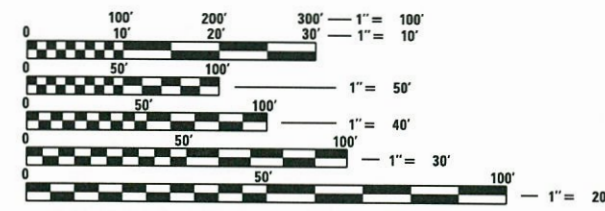
**STATE OF ILLINOIS
DEPARTMENT OF TRANSPORTATION**

**PLANS FOR PROPOSED
FEDERAL AID PROJECT**

**STP-BR FUNDS
FAU 9218 (COUNTY HIGHWAY 39)
SECTION 18-00081-06-BR
STRUCTURE NO: 082-3086
PROJECT NO. Q8PS(895)
ST. CLAIR COUNTY
C-98-018-22**

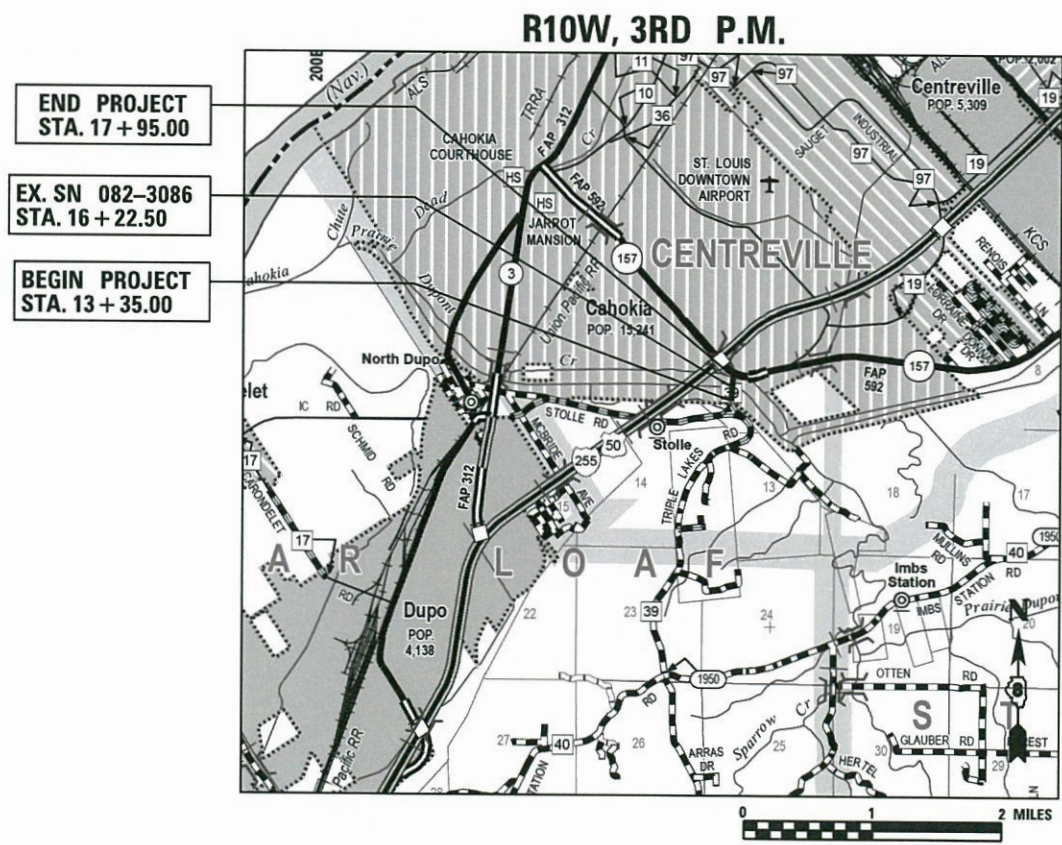


**COUNTY HIGHWAY 39
MINOR ARTERIAL
ADT = 2550 (2018), 4812 (2040)
DESIGN SPEED = 40 MPH**



CONFORM TO STANDARD SCALES. IN MAKING MEASUREMENTS FULL SIZE PLANS HAVE BEEN PREPARED USING STANDARD ENGINEERING SCALES. REDUCED SIZED PLANS WILL NOT ON REDUCED PLANS, THE ABOVE SCALES MAY BE USED.

J.U.L.I.E.
JOINT UTILITY LOCATION INFORMATION FOR EXCAVATION
1-800-892-0123
OR 811



GROSS LENGTH = 460.00 FT. = (0.087 MI)
NET LENGTH = 460.00 FT. = (0.087 MI)



2-19-20
Kevin M. Ostermiller
KEVIN M. OSTERMILLER, P.E.
LICENSE NO. 062-066764 EXPIRATION DATE 11-30-2021

STATE OF ILLINOIS
DEPARTMENT OF TRANSPORTATION

APPROVED *February 26, 2020*
[Signature]
ST. CLAIR COUNTY ENGINEER

PASSED *March 26, 2020*
[Signature]
DISTRICT 8 ENGINEER
LOCAL ROADS & STREETS

RELEASED FOR BID BASED ON LIMITED REVIEW *March 26, 2020*
[Signature]
REGION FIVE ENGINEER

**PRINTED BY THE AUTHORITY
OF THE STATE OF ILLINOIS**

TWM
ENGINEERING
GEOSPATIAL SERVICES

PLANS PREPARED BY:
4940 Old Collinsville Road
Swansea, Illinois 62226
Tel: 618.624.4488
www.twm-inc.com
ILLINOIS - MISSOURI - TENNESSEE

Illinois Professional Design Firm
No. 184-001220
License Expires: 4/30/2021

GENERAL NOTES

- IT IS NOT WARRANTED THAT THIS DOCUMENT CONTAINS COMPLETE INFORMATION REGARDING EASEMENTS, RESERVATIONS, RESTRICTIONS, RIGHT-OF-WAYS, BUILDING LINE SETBACKS, AND OTHER ENCUMBRANCES. FOR COMPLETE INFORMATION, A TITLE OPINION OR COMMITMENT FOR TITLE INSURANCE SHOULD BE OBTAINED AND THOROUGHLY REVIEWED.
- THE CONTRACTOR SHALL VERIFY ALL DIMENSIONS AND CONDITIONS IN THE FIELD PRIOR TO ORDERING OF MATERIALS AND COMMENCING CONSTRUCTION.

UTILITIES

ILLINOIS STATE LAW REQUIRES A 48-HOUR NOTICE BE GIVEN TO ALL UTILITIES BEFORE DIGGING. FIELD MARKING OF FACILITIES MAY BE OBTAINED BY CONTACTING J.U.L.I.E. OR FOR NON-MEMBERS, THE UTILITY COMPANY DIRECTLY. AGENCIES KNOWN TO HAVE FACILITIES WITHIN THE PROJECT AREA ARE AS FOLLOWS:

- *AMEREN IP - GAS & ELECTRIC
- *AT&T - TELEPHONE
- *CHARTER COMMUNICATIONS - CABLE TV
- *CITY OF CAHOKIA - WATER & SEWER

MEMBERS OF J.U.L.I.E. CALL TOLL FREE (800) 892-0123 OR 811 AND ARE INDICATED BY *
NON-J.U.L.I.E. MEMBERS MUST BE NOTIFIED INDIVIDUALLY.

REFER TO THE "STATUS OF UTILITIES TO BE ADJUSTED" SPECIAL PROVISIONS FOR ADDITIONAL INFORMATION.

HIGHWAY STANDARDS

000001-07	STANDARD SYMBOLS, ABBREVIATIONS AND PATTERNS
001001-02	AREAS OF REINFORCEMENT BARS
001006	DECIMAL OF AN INCH AND OF A FOOT
630001-12	STEEL PLATE BEAM GUARDRAIL
630301-09	SHOULDER WIDENING FOR TYPE 1 (SPECIAL) GUARDRAIL TERMINALS
631011-10	TRAFFIC BARRIER TERMINAL, TYPE 2
701901-08	TRAFFIC CONTROL DEVICES
782006-01	GUARDRAIL AND BARRIER WALL REFLECTOR MOUNTING DETAILS
BLR21-09	TYPICAL APPLICATION OF TRAFFIC CONTROL DEVICES FOR CONSTRUCTION ON RURAL LOCAL HIGHWAYS

MIXTURE REQUIREMENTS

MIXTURE USE	SURFACE
AC/PG	PG 64-22
RAP % (MAX)	SEE SPECIAL PROVISION
DESIGN AIR VOIDS	4.0% @ Ndes=90
MIX COMPOSITION (GRADATION MIXTURE)	IL 9.5
FRICTION AGG	MIXTURE "D"

PLAN QUANTITIES FOR BITUMINOUS CONCRETE ITEMS ARE CALCULATED USING A UNIT WEIGHT OF 112 LB / SQ YD / INCH

*** SEE BRIDGE PLANS FOR HOT-MIX ASPHALT LIMITS**

COMMITMENTS

NONE

MODEL: D:\64bit
 FILE NAME: P:\2018\180810M_CADD - DWG\4.7_Tran\CADD_Sheets\180810 - 02 - chr-GN.dgn



TWM, INC.
 www.twm-inc.com
 IL DESIGN FIRM
 LICENSE NO:
 184-001220

USER NAME = kostermiller	DESIGNED - KMO	REVISED -
PLOT SCALE = 2,0000' / in.	DRAWN - KMO	REVISED -
PLOT DATE = 2/19/2020	CHECKED - JWS	REVISED -
	DATE - 2/19/2020	REVISED -



**ST. CLAIR COUNTY
 DEPARTMENT OF
 ROADS AND BRIDGES**

HIGHWAY STANDARDS, GENERAL NOTES AND COMMITMENTS			
SCALE: NONE	SHEET 1	OF 1 SHEETS	STA. TO STA.

F.A.U.	SECTION	COUNTY	TOTAL SHEETS	SHEET NO.
9218	18-00081-06-BR	ST. CLAIR	10	2
CONTRACT NO. 97730				
		ILLINOIS	FED. AID PROJECT	

CODE NO.	PAY ITEM	UNIT	TOTAL QUANTITY
20200100	EARTH EXCAVATION	CU YD	50
40604064	HOT-MIX ASPHALT SURFACE COURSE, IL-9.5, MIX "D", N90	TON	93
58100200	WATERPROOFING MEMBRANE SYSTEM	SQ YD	805
58300100	PORTLAND CEMENT MORTAR FAIRING COURSE	FOOT	2160
Δ 63000001	STEEL PLATE BEAM GUARDRAIL, TYPE A, 6 FOOT POSTS	FOOT	37.5
Δ 63000007	STEEL PLATE BEAM GUARDRAIL, TYPE B, 6 FOOT POSTS	FOOT	100
Δ 63100045	TRAFFIC BARRIER TERMINAL, TYPE 2	EACH	2
Δ 63100167	TRAFFIC BARRIER TERMINAL, TYPE 1 (SPECIAL) TANGENT	EACH	2
63200310	GUARDRAIL REMOVAL	FOOT	204
67100100	MOBILIZATION	L SUM	1
70107025	CHANGEABLE MESSAGE SIGN	CAL DA	112
Δ 72501000	TERMINAL MARKER - DIRECT APPLIED	EACH	2
Δ 78001110	PAINT PAVEMENT MARKING - LINE 4"	FOOT	970
Δ 78200005	GUARDRAIL REFLECTORS, TYPE A	EACH	10

CODE NO.	PAY ITEM	UNIT	TOTAL QUANTITY
Z0012754	STRUCTURAL REPAIR OF CONCRETE (DEPTH EQUAL TO OR LESS THAN 5 INCHES)	SQ FT	20
Z0017300	DOWEL REPAIR	EACH	45
Z0029300	GROUT REPAIR	FOOT	15
Z0032700	KEYWAY REPAIR	FOOT	540
X1200206	HOT-MIX ASPHALT SURFACE REMOVAL COMPLETE	SQ YD	805
X2010510	CLEARING AND GRUBBING	L SUM	1
Δ X6300130	STEEL PLATE BEAM GUARDRAIL, TYPE A (SPECIAL)	FOOT	12.5
X7010216	TRAFFIC CONTROL AND PROTECTION, (SPECIAL)	L SUM	1

Δ SPECIALTY ITEMS

MODEL: Default
FILE NAME: P:\2018\1808104.CADD - DWG\4.7 Tran\CADD_Sheet\180810 - 03 - PH-500.dgn



TWM, INC.
WWW.TWM-INC.COM
IL DESIGN FIRM
LICENSE NO:
184-001220

USER NAME = kostermiller
PLOT SCALE = 2.0000" / in.
PLOT DATE = 3/18/2020

DESIGNED - KMO
DRAWN - KMO
CHECKED - JWS
DATE - 2/19/2020

REVISED -
REVISED -
REVISED -
REVISED -

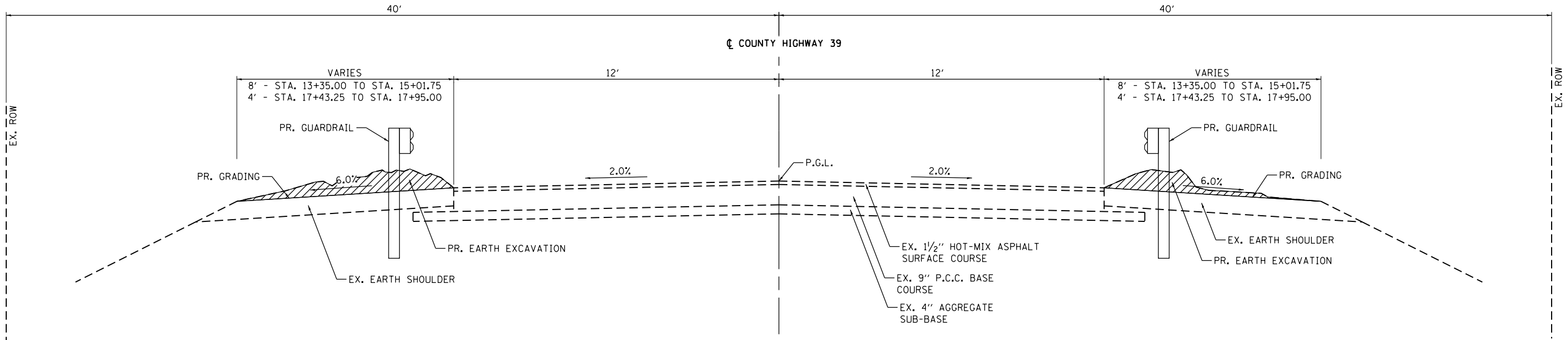


**ST. CLAIR COUNTY
DEPARTMENT OF
ROADS AND BRIDGES**

**SUMMARY OF QUANTITIES
COUNTY HIGHWAY 39**

SCALE: NONE SHEET 1 OF 1 SHEETS STA. TO STA.

F.A.U.	SECTION	COUNTY	TOTAL SHEETS	SHEET NO.
9218	18-00081-06-BR	ST. CLAIR	10	3
CONTRACT NO. 97730			ILLINOIS FED. AID PROJECT	



COUNTY HIGHWAY 39

STA. 13+35.00 TO STA. 15+01.75
 STA. 17+43.25 TO STA. 17+95.00

* STA. 15+01.75 TO STA. 17+43.25 (SEE BRIDGE PLANS)

MODEL: Dwg.dgn
 FILE NAME: P:\2018\1808104_CADD - DWG\4.7_Tran\CADD_Sheets\180810 - 04 - sht-cyrcal.dgn


TWM, INC.
 www.twm-inc.com
 IL DESIGN FIRM
 LICENSE NO: 184-001220

USER NAME = kostermiller
PLOT SCALE = 2,0000' / in.
PLOT DATE = 2/19/2020

DESIGNED - KMO	REVISED -
DRAWN - KMO	REVISED -
CHECKED - JWS	REVISED -
DATE - 2/19/2020	REVISED -



ST. CLAIR COUNTY
DEPARTMENT OF
ROADS AND BRIDGES

TYPICAL SECTION			
COUNTY HIGHWAY 39			
SCALE:	SHEET 1	OF 1	SHEETS
	STA. 13+35.00 TO STA. 17+95.00		

F.A.U.	SECTION	COUNTY	TOTAL SHEETS	SHEET NO.
9218	18-00081-06-BR	ST. CLAIR	10	4
CONTRACT NO. 97730				
ILLINOIS FED. AID PROJECT				

EARTHWORK SCHEDULE				
LOCATION				EARTH EXCAVATION
STA.	TO	STA.	NOTES	CU YD
CH 39				
13+35.00	TO	15+01.75	LEFT - 8' WIDE	20
13+35.00	TO	15+01.75	RIGHT - 8' WIDE	20
17+43.25	TO	17+95.00	LEFT - 4' WIDE	5
17+43.25	TO	17+95.00	RIGHT - 4' WIDE	5
TOTAL :				50

PAVEMENT MARKING SCHEDULE					
LOCATION				PAINT PAVEMENT MARKING LINE	PAINT PAVEMENT MARKING LINE
				4"	4"
STA.				DOUBLE SOLID	SOLID
				YELLOW	WHITE
TO	STA.	NOTES	FOOT	FOOT	
CH 39					
15+01.75	TO	17+43.25	LT		242
15+01.75	TO	17+43.25	CL	484	
15+01.75	TO	17+43.25	RT		242
TOTAL :				970	

GUARDRAIL SCHEDULE										
LOCATION				STEEL PLATE BEAM GUARDRAIL, TYPE A, 6 FOOT POSTS	STEEL PLATE BEAM GUARDRAIL, TYPE B, 6 FOOT POSTS	TRAFFIC BARRIER TERMINAL, TYPE 2	TRAFFIC BARRIER TERMINAL, TYPE 1 (SPECIAL) TANGENT	STEEL PLATE BEAM GUARDRAIL, TYPE A (SPECIAL)	GUARDRAIL REFLECTORS, TYPE A	TERMINAL MARKER - DIRECT APPLIED
STA.	TO	STA.	NOTES	FOOT	FOOT	EACH	EACH	FOOT	EACH	EACH
CH 39										
13+35.00	TO	15+01.75	LEFT		25		1			1
13+35.00	TO	15+01.75	RIGHT	37.5	25		1			1
17+43.25	TO	17+95.00	LEFT		25	1		6.25		
17+43.25	TO	17+95.00	RIGHT		25	1		6.25		
13+35.00	TO	17+95.00	LEFT						5	
13+35.00	TO	17+95.00	RIGHT						5	
TOTAL :				37.5	100	2	2	12.5	10	2

GUARDRAIL REMOVAL SCHEDULE				
LOCATION				GUARDRAIL REMOVAL
STA.	TO	STA.	NOTES	FOOT
CH 39				
14+67.08	TO	15+04.58	LEFT	37.5
14+29.58	TO	15+04.58	RIGHT	75.0
17+40.42	TO	17+85.92	LEFT	45.5
17+40.42	TO	17+85.92	RIGHT	45.5
TOTAL :				204

MODEL: D:\p4\h\1\180810\4_CADD - DWG\4.7_Tran\CADD_Sheets\180810 - 05 - sht-schedule.dgn
 FILE NAME: P:\2018\180810\4_CADD - DWG\4.7_Tran\CADD_Sheets\180810 - 05 - sht-schedule.dgn



TWM, INC.
 www.twm-inc.com
 IL DESIGN FIRM
 LICENSE NO:
 184-001220

USER NAME = kostermiller
 DESIGNED - KMO
 DRAWN - KMO
 CHECKED - JWS
 DATE - 2/19/2020

REVISED -
 REVISED -
 REVISED -
 REVISED -



**ST. CLAIR COUNTY
 DEPARTMENT OF
 ROADS AND BRIDGES**

**SCHEDULE OF QUANTITIES
 COUNTY HIGHWAY 39**

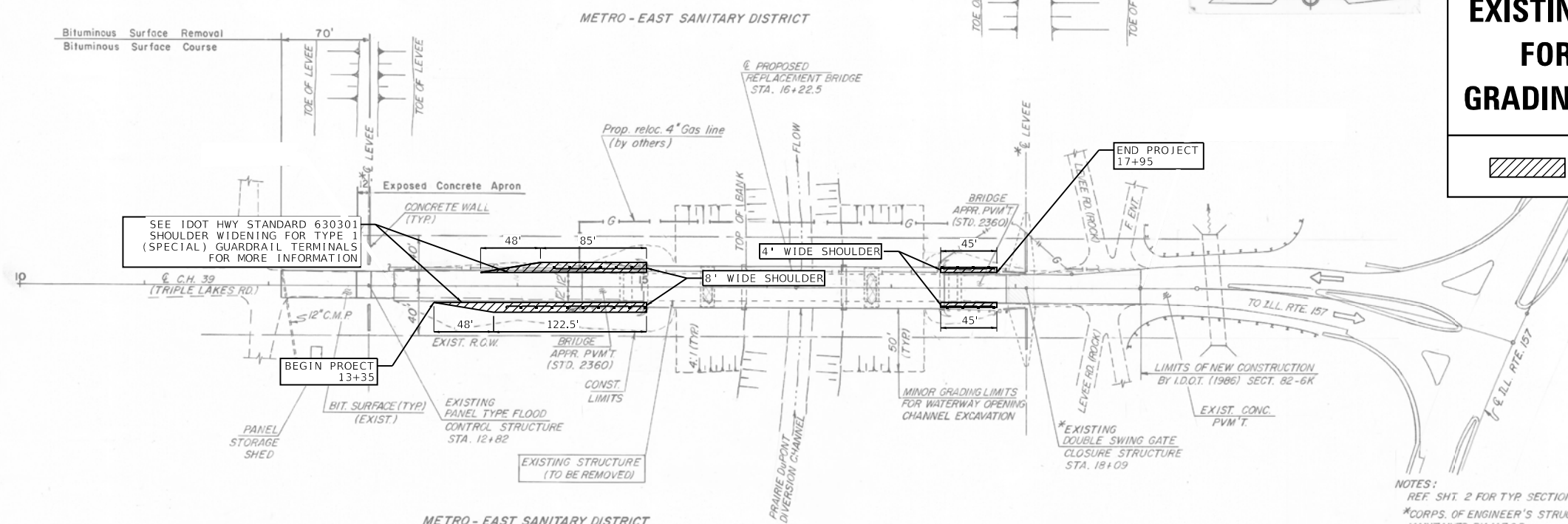
SCALE: NONE SHEET 1 OF 1 SHEETS STA. TO STA.

F.A.U.	SECTION	COUNTY	TOTAL SHEETS	SHEET NO.
9218	18-00081-06-BR	ST. CLAIR	10	5
CONTRACT NO. 97730				
ILLINOIS FED. AID PROJECT				

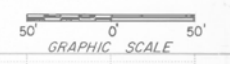
ROUTE NO.	SECTION	COUNTY	TOTAL SHEETS	SHEET NO.
C.H. 39	87-00081-03-BR	ST. CLAIR	14	4

EXISTING PLAN (1991) FOR SHOULDER GRADING LIMITS ONLY

 PROPOSED SHOULDER GRADING



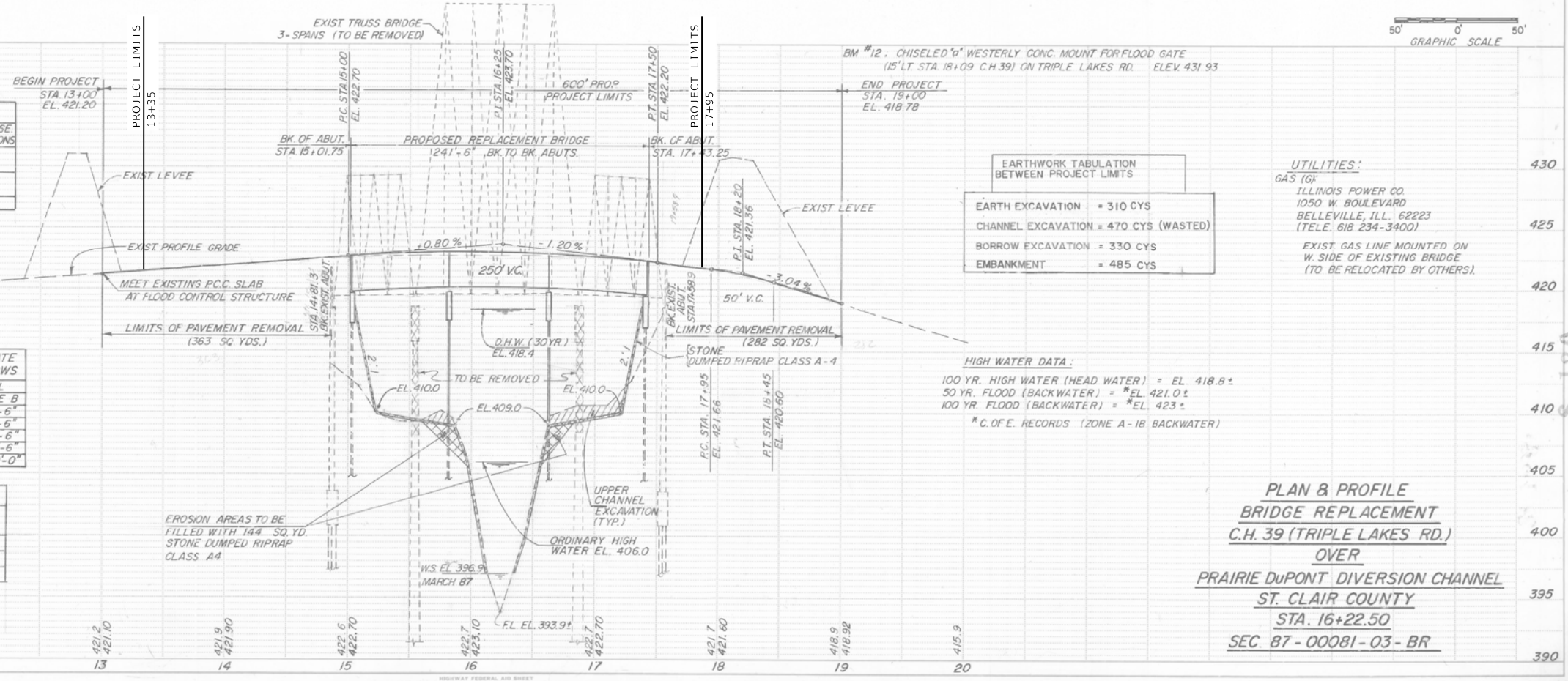
NOTES:
REF. SHT. 2 FOR TYP. SECTION
*CORPS. OF ENGINEER'S STRUCTURES MAINTAINED BY M.E.S.D.



BR. APPR. P.V.M.T. SQ. YD.	REINF. BARS LBS	BIT. CONC. SURF. CSE CLASS I, MIX D, TONS
STA. 14+52.08 TO STA. 15+02.08	133	10,325
STA. 17+42.92 TO STA. 17+92.92	133	10,325
TOTALS	266	20,650

TERMINAL SECTIONS	RAIL			
	TYPE 1	TYPE 2	TYPE A	TYPE B
LT. STA. 14+67.08 TO STA. 15+04.58	1		12'-6"	
RT. STA. 14+29.58 TO STA. 15+04.58	1		37'-6"	12'-6"
LT. STA. 17+40.42 TO STA. 17+85.92		1	18'-9"	12'-6"
RT. STA. 17+40.42 TO STA. 17+85.92		1	18'-9"	12'-6"
TOTALS	2 EA.	2 EA.	75'-0"	50'-0"

LOCATION	LINE 4" (SOLID WHITE)	LINE 4" YELLOW SKIP
LT. STA. 13+00 TO STA. 19+00	600	
RT. STA. 13+00 TO STA. 19+00	600	
Q. STA. 13+00 TO STA. 19+00		150



EARTH EXCAVATION	= 310 CYS
CHANNEL EXCAVATION	= 470 CYS (WASTED)
BORROW EXCAVATION	= 330 CYS
EMBANKMENT	= 485 CYS

UTILITIES:
GAS (6")
ILLINOIS POWER CO.
1050 W. BOULEVARD
BELLEVILLE, ILL. 62223
(TELE. 618 234-3400)
EXIST. GAS LINE MOUNTED ON W. SIDE OF EXISTING BRIDGE (TO BE RELOCATED BY OTHERS).

PLAN & PROFILE BRIDGE REPLACEMENT C.H. 39 (TRIPLE LAKES RD.) OVER PRAIRIE DuPONT DIVERSION CHANNEL ST. CLAIR COUNTY STA. 16+22.50 SEC. 87 - 00081 - 03 - BR

120

DATE	2/87
BY	KP
APPROVED	AKS
NOTED	AKS
NO.	3/88

DATE	2/07
BY	KP
APPROVED	AKS
NOTED	AKS
NO.	3/08

120



TWM, INC.
www.twm-inc.com
IL DESIGN FIRM LICENSE NO: 184-001220

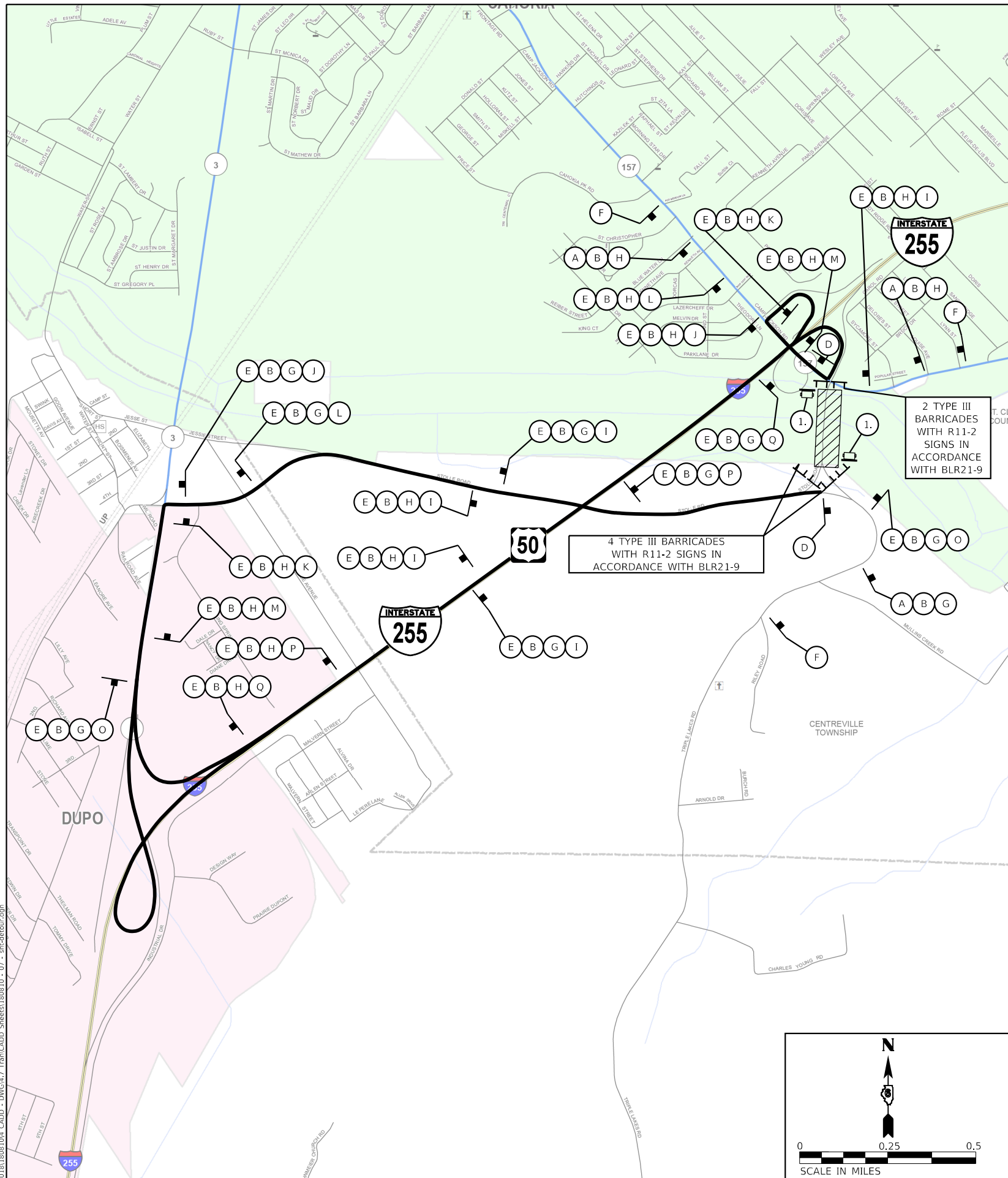
USER NAME = kostermiller
DESIGNED - KMO
DRAWN - KMO
CHECKED - JWS
DATE - 2/19/2020

REVISED -
REVISED -
REVISED -
REVISED -

ST. CLAIR COUNTY
DEPARTMENT OF
ROADS AND BRIDGES

EXISTING PLAN (1991) FOR SHOULDER GRADING LIMITS ONLY
COUNTY HIGHWAY 39
SCALE: NONE SHEET 1 OF 1 SHEETS STA. 13+35.00 TO STA. 17+95.00

F.A.U.	SECTION	COUNTY	TOTAL SHEETS	SHEET NO.
9218	18-00081-06-BR	ST. CLAIR	10	6
ILLINOIS			FED. AID PROJECT	



PROPOSED SIGNAGE

W20-3		R11-2	M4-8a	M4-8	W20-2
(A)	(B)	(C)	(D)	(E)	(F)
M3-1	M3-3	M6-3	M6-1L	M6-1R	M6-3L
(G)	(H)	(I)	(J)	(K)	(L)
M6-3R	M5-2L	M6-2L	M5-2R	M6-2R	
(M)	(N)	(O)	(P)	(Q)	

CHANGEABLE MESSAGE SIGN SUGGESTED TEXT

- 1. TRIPLE LAKES RD. CLOSED XX-XX-20 TO XX-XX-20 (FOR 14 DAYS PRIOR TO CLOSURE)
- TRIPLE LAKES RD. CLOSED UNTIL XX-XX-20 (DURING CLOSURE) FOLLOW DETOUR

LEGEND

- PROPOSED POST MOUNTED SIGN
- TYPE III BARRICADE
- CHANGEABLE MESSAGE SIGN
- DETOUR ROUTE
- WORK ZONE

NOTES

- ALL CHANGEABLE MESSAGE SIGNS TO BE PLACED AS SHOWN ON THE PLAN OR AT THE DIRECTION OF THE ENGINEER. MESSAGES POSTED ON THE CHANGEABLE MESSAGE SIGNS SHALL BE THE RESPONSIBILITY OF THE CONTRACTOR. COST INCLUDED IN THE COST OF CHANGEABLE MESSAGE SIGNS.
- ALL ROAD CLOSURE SIGNAGE TO BE PLACED IN ACCORDANCE WITH BLR21-9 PER THE DIRECTION OF THE ENGINEER.

MODEL: D:\dtd\11...
 FILE NAME: P:\2018\11808104_CADD...DWG\4.7_Tran\CADD_Sheets\180810...07...sh-detour.dwg



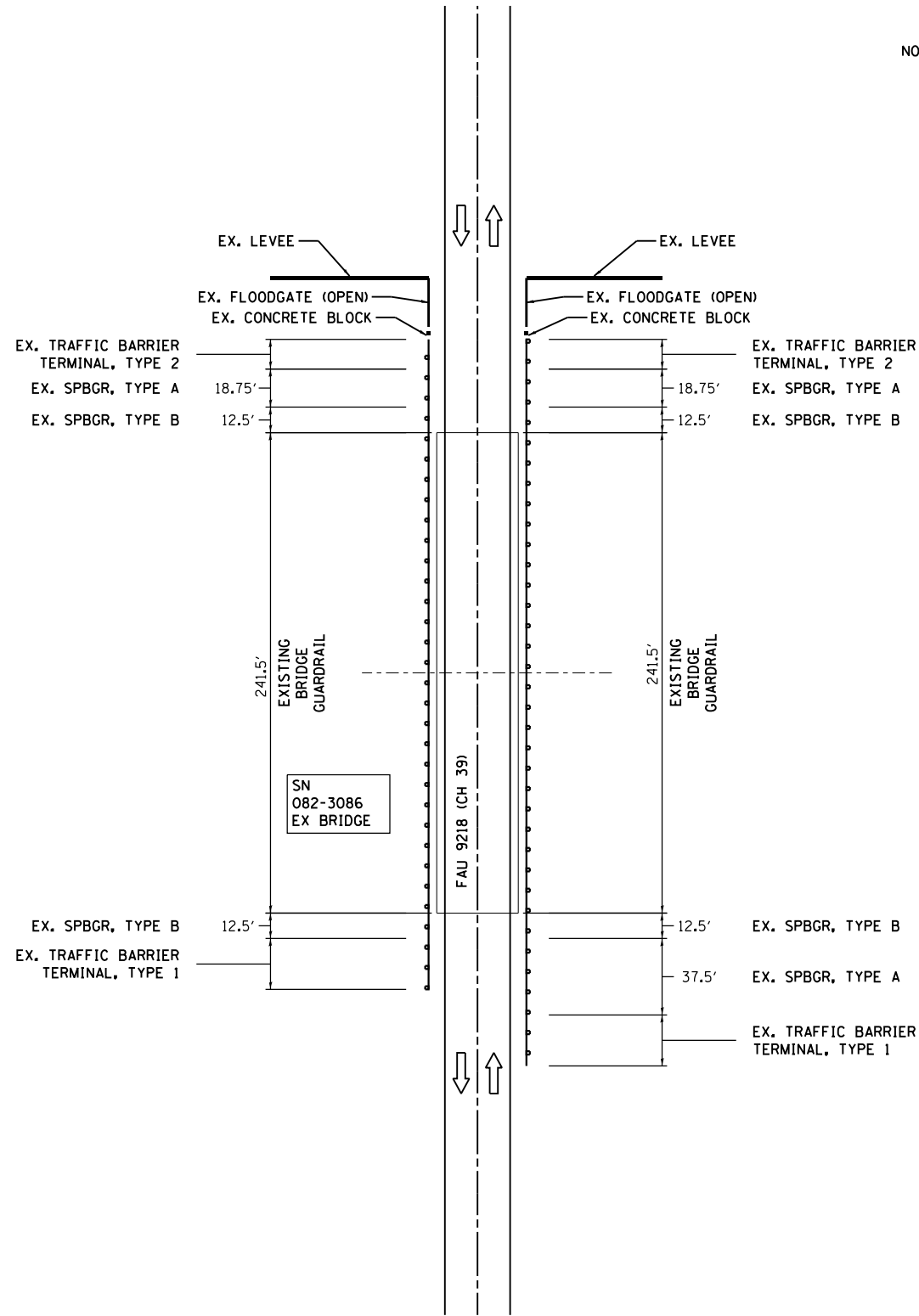
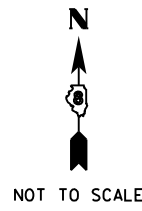
USER NAME = kostermiller	DESIGNED - KMO	REVISED -
PLOT SCALE = 3960.0000' / in.	DRAWN - KMO	REVISED -
PLOT DATE = 2/19/2020	CHECKED - JWS	REVISED -
	DATE - 2/19/2020	REVISED -



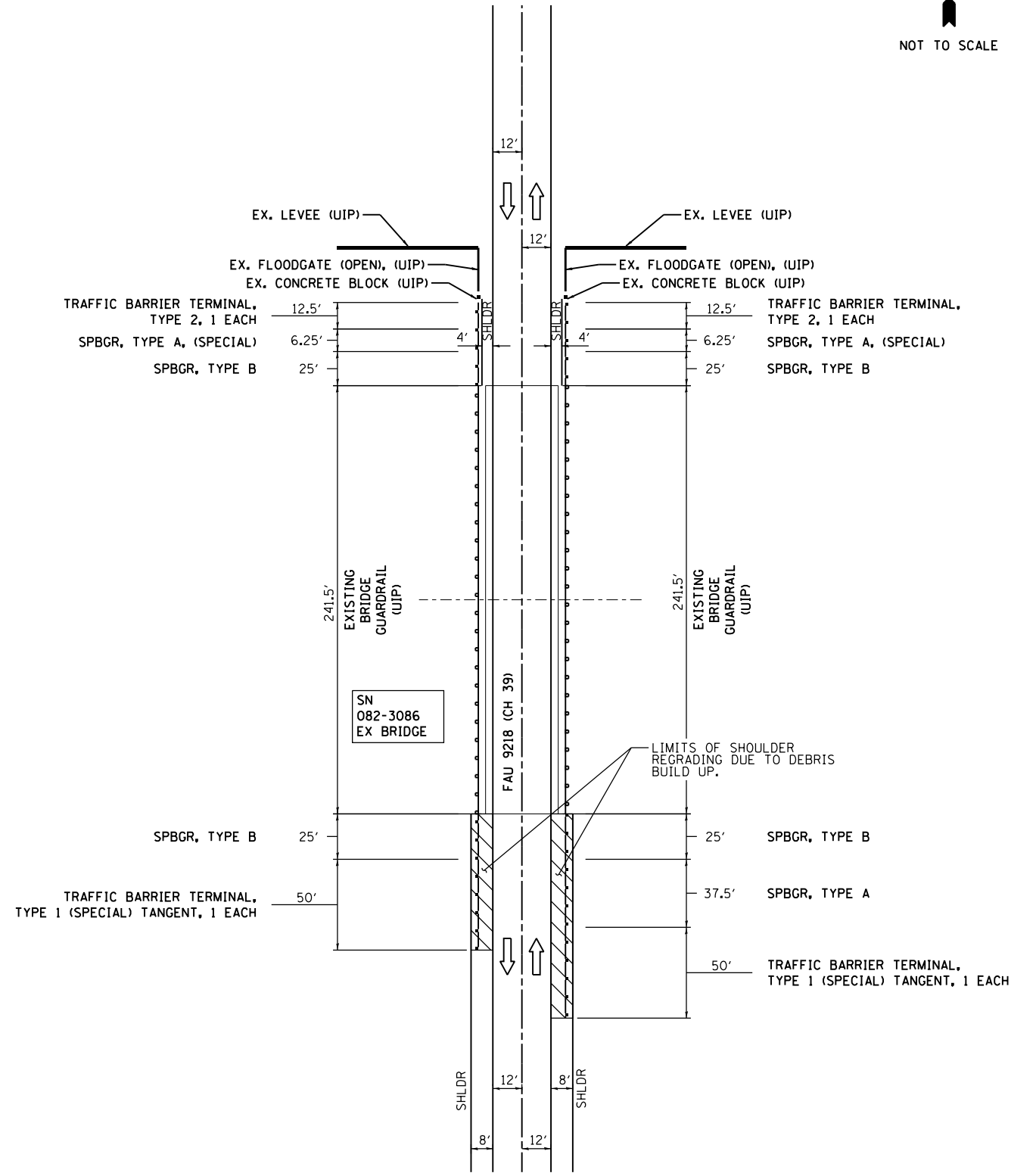
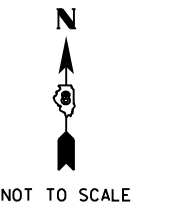
**ST. CLAIR COUNTY
DEPARTMENT OF
ROADS AND BRIDGES**

DETOUR PLAN			
COUNTY HIGHWAY 39			
SCALE:	SHEET 1	OF 1 SHEETS	STA. TO STA.

F.A.U.	SECTION	COUNTY	TOTAL SHEETS	SHEET NO.
9218	18-00081-06-BR	ST. CLAIR	10	7
ILLINOIS FED. AID PROJECT			CONTRACT NO. 97730	



EXISTING LAYOUT



PROPOSED LAYOUT

MODEL: D:\p4\it...
 FILE NAME: P:\2018\1808104_CADD...
 USER: kostermiller



TWM, INC.
 www.twm-inc.com
 ILLINOIS DESIGN FIRM
 LICENSE NO: 184-001220

USER NAME = kostermiller
 DESIGNED - KMO
 DRAWN - KMO
 CHECKED - JWS
 DATE - 2/19/2020

REVISED -
 REVISED -
 REVISED -
 REVISED -



**ST. CLAIR COUNTY
 DEPARTMENT OF
 ROADS AND BRIDGES**

**GUARDRAIL DETAIL
 COUNTY HIGHWAY 39**

SCALE: SHEET 1 OF 1 SHEETS STA. TO STA.

F.A.U.	SECTION	COUNTY	TOTAL SHEETS	SHEET NO.
9218	18-00081-06-BR	ST. CLAIR	10	8
CONTRACT NO. 97730				
ILLINOIS FED. AID PROJECT				

GENERAL NOTES

Plan dimensions and details relative to existing plans are subject to nominal construction variations. The contractor shall field verify existing dimensions and details affecting new construction and make necessary approved adjustments prior to construction or ordering of materials. Such variations shall not be cause for additional compensation for a change in scope of the work, however, the Contractor will be paid for the quantity actually furnished at the unit price bid for the work.

The quantity for "Keyway Repair" has been estimated at 25% of all the keyways. The Engineer shall determine the actual quantities after the removal of the HMA wearing surface.

The quantity for "Structural Repair of Concrete" has been estimated at 100% of backwall length. The Engineer shall determine the actual quantities after the removal of the HMA wearing surface.

The quantity for "Grout Repair" has been estimated at 25% of Bent 1 and Bent 2 joint length. The Engineer shall determine the actual quantities after the removal of the HMA wearing surface.

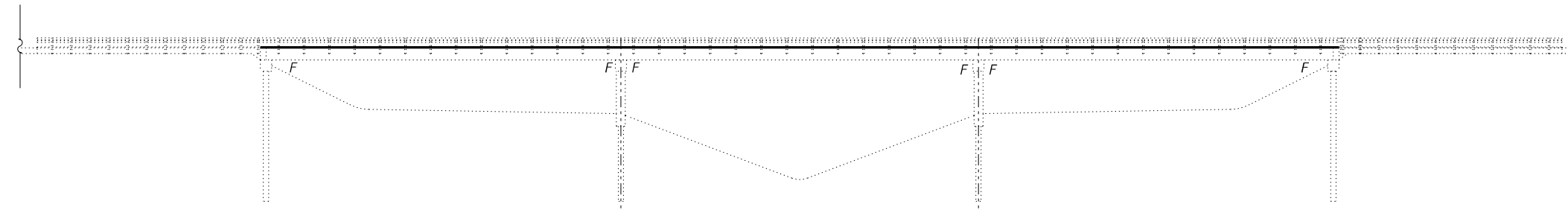
The quantity for "Dowel Repair" has been estimated at 25% of all the dowels. The Engineer shall determine the actual quantities after the removal of the HMA wearing surface.

Removal of lime dust and aggregate on bridge shoulders shall be included in Hot-Mix Asphalt Surface Removal Complete.

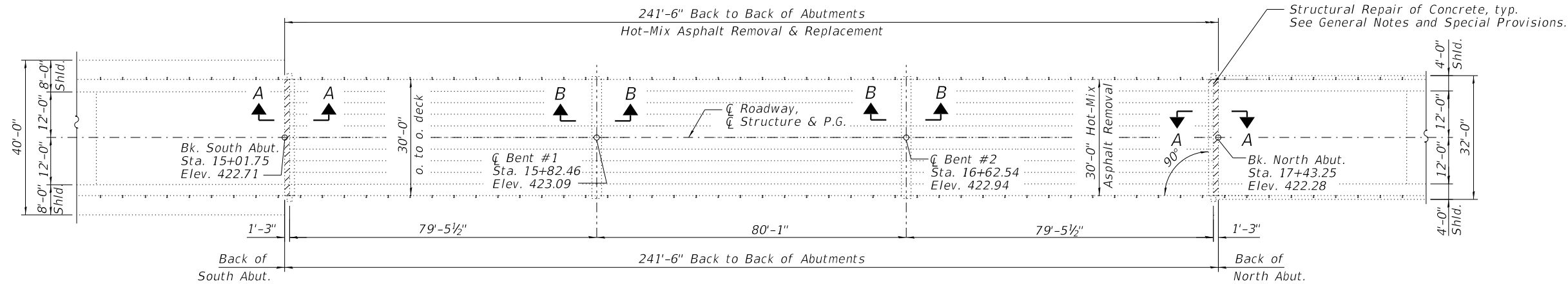
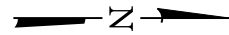
Bench Mark: BM #12 Chiseled "□" westerly conc. moun. for Flood Gate on Triple Lakes Rd., Elev. 431.93

Existing Structure: SN 082-3086 was built in 1992 under Section 87-00081-03-BR of C.H. 39 at Station 16+22.50. The existing three-span structure consists of simple span PPC deck beams supported on pile bent abutments and piers (metal shell piles). The structure is 241'-6" back to back of abutments and 30'-0" out to out of deck beams. Keyways shall be repaired and bituminous overlay and waterproofing membrane shall be removed and replaced. Traffic is to be detoured.

No Salvage.



ELEVATION
(Looking West)

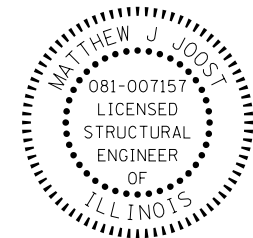


PLAN

See Sheet 2 for Sections A-A and B-B

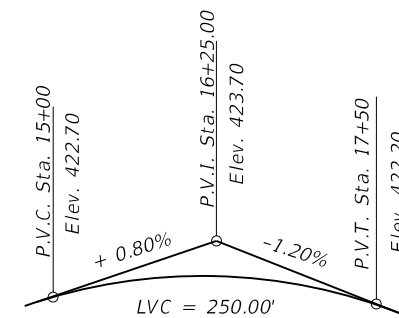
EXISTING DESIGN SPECIFICATIONS

AASHTO (1989), 1990 Interims

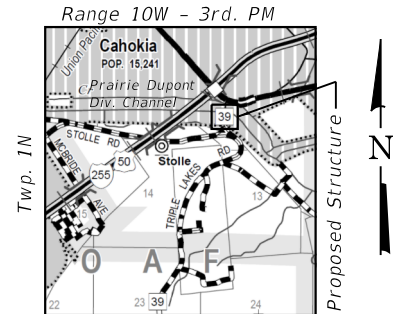


Matthew J. Joost
02/19/2020
EXPIRES 11/30/2020

I certify that to the best of my knowledge, information and belief, the repair details are structurally adequate for the design loading shown on the plans. The design is an economical one for the style of the structure and complies with the requirements of the current AASHTO Standard Specifications for Highway Bridges.



PROFILE GRADE
(along Centerline Roadway)



LOCATION SKETCH

INDEX OF SHEETS

1. General Plan & Elevation
2. Repair Details

TOTAL BILL OF MATERIAL

ITEM	UNIT	SUPER	SUB	TOTAL
Hot-Mix Asphalt Surface Course, IL-9.5, Mix "D", N90	Ton	93		93
Waterproofing Membrane System	Sq. Yd.	805		805
Portland Cement Mortar Fairing Course	Foot	2160		2160
Grout Repair	Foot	15		15
Keyway Repair	Foot	540		540
Hot-Mix Asphalt Surface Removal Complete	Sq. Yd.	805		805
Structural Repair of Concrete (Depth Equal to or Less than 5")	Sq. Ft.		20	20
Dowel Repair	Each	45		45

GENERAL PLAN & ELEVATION
C.H. 39 OVER
PRAIRIE DuPONT DIV. CHANNEL
SEC. 18-00081-06-BR
ST. CLAIR COUNTY
STATION 16+22.50
STRUCTURE NO. 082-3086

FILE NAME = F:\2018\180810-4 CAD - DWG\4.4 Struct\Keyway Repair_Plan\0823086-97730-009-General_Plan and Elevation.dgn

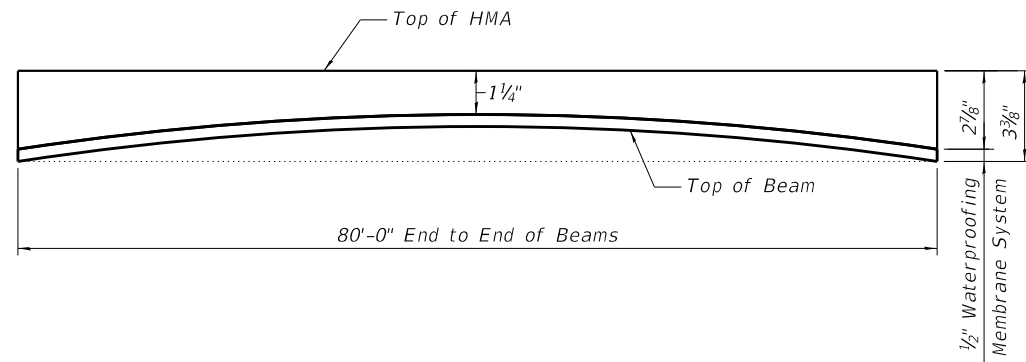


USER NAME = nparajuli	DESIGNED - NP	REVISED
	CHECKED - MJJ	REVISED
PLOT SCALE = 0:2.0000 '1' / 11"	DRAWN - NP	REVISED
PLOT DATE = 2/19/2020	CHECKED - MJJ	REVISED

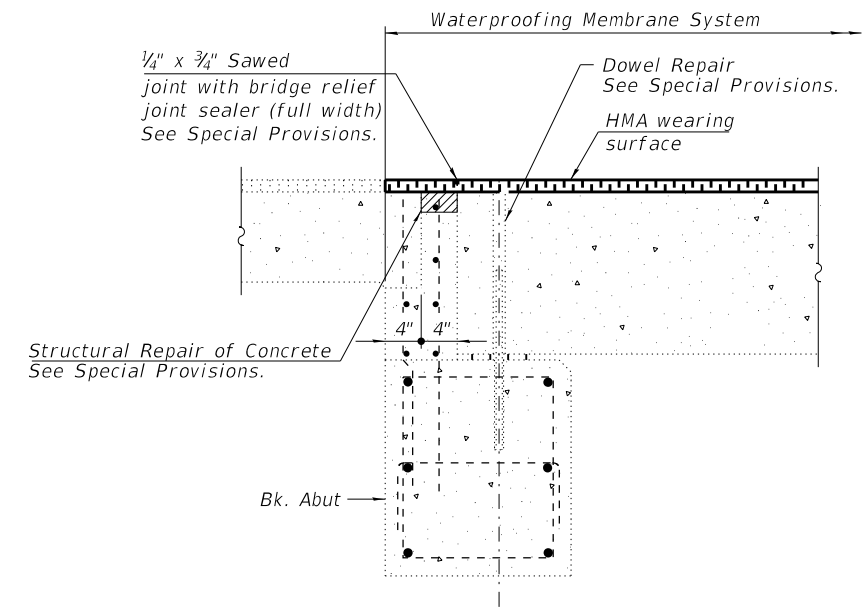
STATE OF ILLINOIS
ST. CLAIR COUNTY DEPT. OF ROADS & BRIDGES

GENERAL PLAN & ELEVATION
STRUCTURE NO. 082-3086
SHEET NO. 1 OF 2 SHEETS

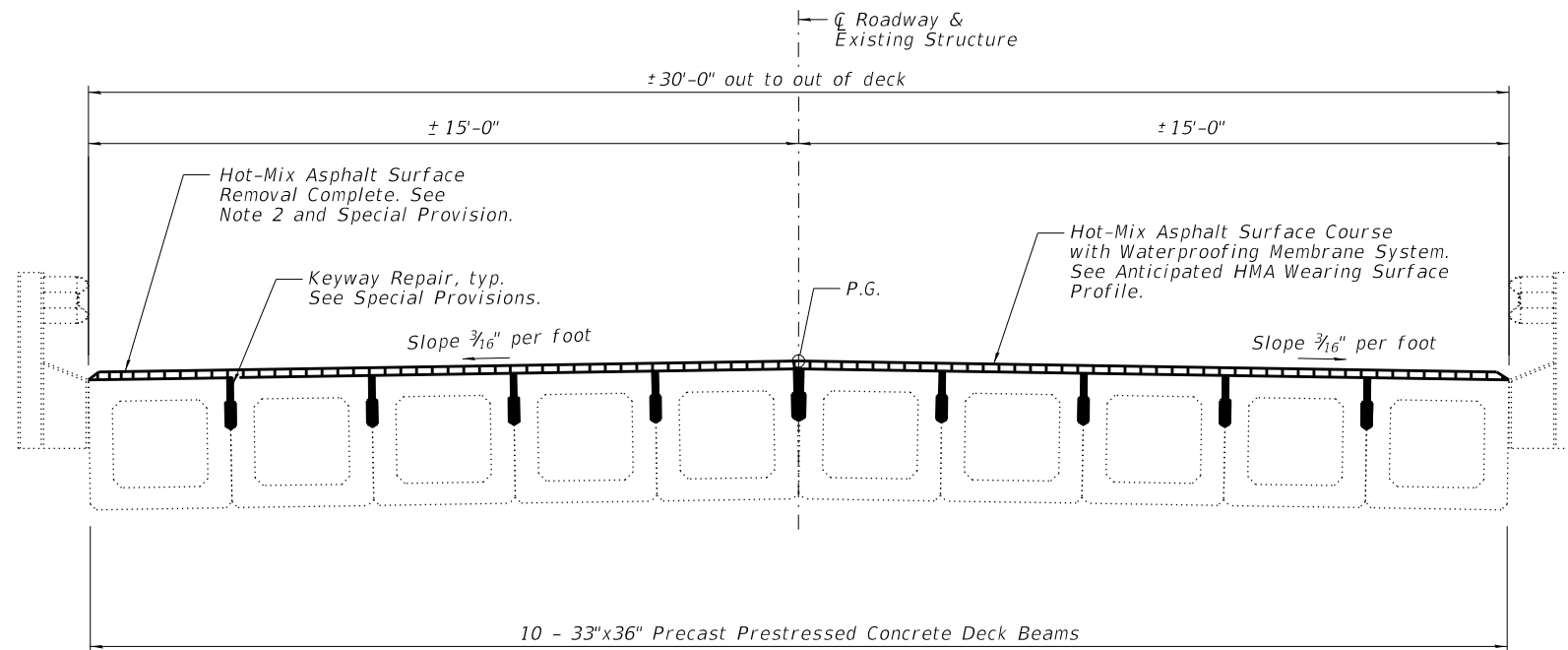
F.A.U.	SECTION	COUNTY	TOTAL SHEETS	SHEET NO.
9218	18-00081-06-BR	ST. CLAIR	10	9
CONTRACT NO. 97730				
ILLINOIS FED. AID PROJECT				



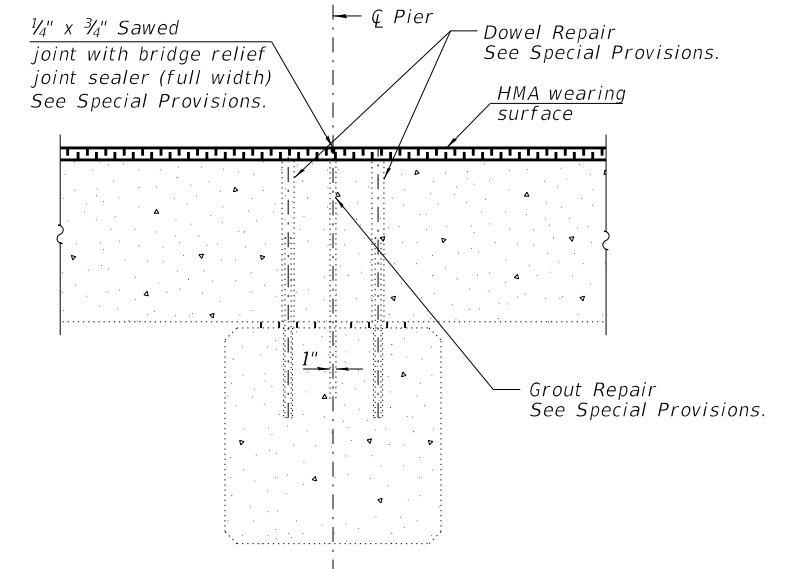
ANTICIPATED HMA WEARING SURFACE PROFILE
 (For information only. 1 Span Shown. Each Span is the same.)



SECTION A-A



CROSS SECTION



SECTION B-B

Notes:
 1. See Sheet 1 for location of Sections A-A and B-B.
 2. Contractor shall remove entire HMA Surface Course and Waterproofing Membrane System. According to the existing bridge plans, the existing HMA surface course and Waterproofing Membrane System vary from 3 3/8" thick at the supports (abutments and piers) to 1 3/4" thick at the center of the spans. The Contractor shall field verify thickness.

FILE NAME = F:\2018\180810\4 CAD - DWG\4.4 Struct\Keyway Repair - Plans\0823086-97730-010-Repair_Details.dgn



TWM, INC.
 www.twm-inc.com
 IL DESIGN FIRM
 LICENSE NO:
 184-001220

USER NAME	= nparajuli	DESIGNED	- NP	REVISED	
		CHECKED	- MJJ	REVISED	
PLOT SCALE	= 0:2.0000 '1' / 11"	DRAWN	- NP	REVISED	
PLOT DATE	= 2/18/2020	CHECKED	- MJJ	REVISED	

STATE OF ILLINOIS
ST. CLAIR COUNTY DEPT. OF ROADS & BRIDGES

REPAIR DETAILS
STRUCTURE NO. 082-3086

SHEET NO. 2 OF 2 SHEETS

F.A.U.	SECTION	COUNTY	TOTAL SHEETS	SHEET NO.
9218	18-00081-06-BR	ST. CLAIR	10	10
CONTRACT NO. 97730				
ILLINOIS FED. AID PROJECT				