



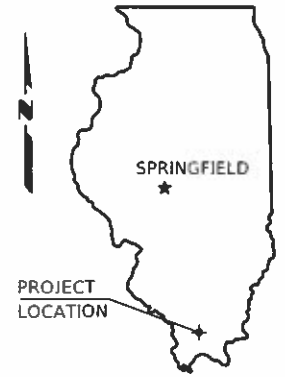
06-12-2020 LETTING ITEM 128

STATE OF ILLINOIS
DEPARTMENT OF TRANSPORTATION
PLANS FOR PROPOSED

SURFACE TRANSPORTATION PROGRAM

FAS ROUTE 1931 (GOREVILLE ROAD)
SECTION 17-00070-00-RS
PROJECT NO. YVN7(824)
JOB NO. C-99-033-18

ROUTE	SECTION	COUNTY	TOTAL SHEETS	SHEET NO.
FAS 1931	17-00070-00-RS	JOHNSON	11	7
PROJECT NO. YVN7(824)			CONTRACT NO. 99638	

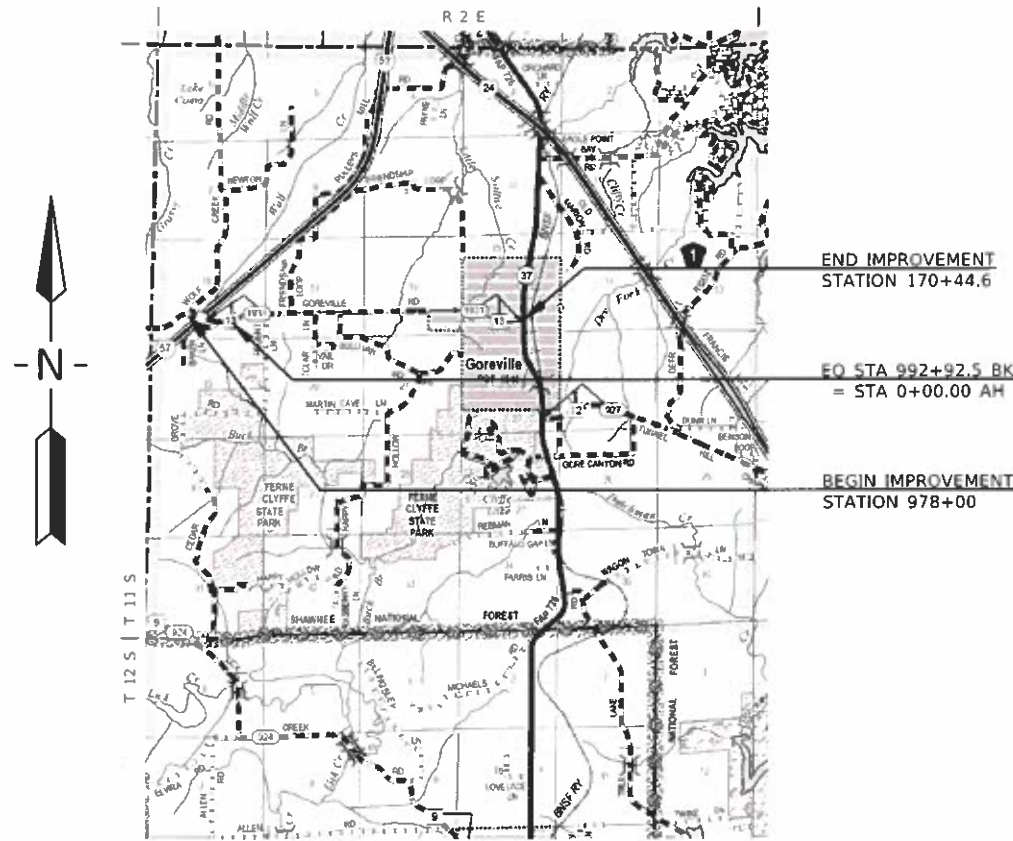


JOHNSON COUNTY

SEE SHEET 2 FOR INDEX OF SHEETS

Previously constructed as Section 92-00048-00-RS
Section 30 Q
& Section 44-1

CLASSIFICATION : MAJOR COLLECTOR
ADT : 1,000 - 2,050
DESIGN SPEED : 50 MPH

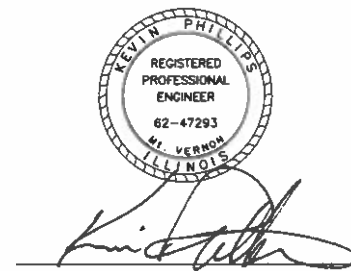


LOCATION MAP

SCALE: 1" = 2 MILES

NET LENGTH OF IMPROVEMENT = 18,537.10 FT. = 3.5108 MILES

CONTRACT NO. 99638



Kevin Phillips
PROFESSIONAL ENGINEER
#062-047293
EXPIRES NOV. 30, 2021

Round Table Design, Inc.
PROFESSIONAL ENGINEERING - LAND SURVEYING
1457 HIGHWAY 145 S HARRISBURG, IL (618) 253-6017

ILLINOIS DEPARTMENT OF TRANSPORTATION	
Approved	3-25-2020 <i>Stu Kelly</i> Johnson County Engineer
Passed	04/04/2020 <i>[Signature]</i> District 5 Engineer of Local Roads and Streets
Releasing for Bid Based on Limited Review	04/04/2020 <i>Keith Roberts</i> Keith Roberts, P.E. Acting Region Five Engineer J/E

C:\Projects\180110\2180110 All.dwg, 3/30/2020 12:36:48 PM

ROUTE	SECTION	COUNTY	TOTAL SHEETS	SHEET NO.
FAS 1931	17-00070-00-R5	JOHNSON	11	2
PROJECT NO. YVN7(824)			CONTRACT NO. 99638	

SUMMARY OF QUANTITIES

<u>CODE NO.</u>	<u>PAY ITEM</u>	<u>UNIT</u>	<u>TOTAL</u>
* Z0033700	LONGITUDINAL JOINT SEALANT	FOOT	18,348
Δ * Z0052000	REPAIR STEEL PLATE BEAM GUARDRAIL, TYPE A	FOOT	150
* X1200207	REMOVE AND RELAY PIPE CULVERTS (SPECIAL)	FOOT	120
Δ * X6330900	VERTICAL ADJUSTMENT OF GUARDRAIL	FOOT	3,150
* X7010216	TRAFFIC CONTROL AND PROTECTION, (SPECIAL)	L SUM	1
* 20800150	TRENCH BACKFILL	CU YD	80
* 28100807	STONE DUMPED RIPRAP, CLASS A4	TON	20
40600275	BITUMINOUS MATERIALS (PRIME COAT)	POUND	44
40600290	BITUMINOUS MATERIALS (TACK COAT)	POUND	33,740
40600990	TEMPORARY RAMP	SQ YD	37
40602985	HOT-MIX ASPHALT BINDER COURSE, IL-9.5, N70	TON	2,010
40603085	HOT-MIX ASPHALT BINDER COURSE, IL-19.0, N70	TON	105
40604052	HOT-MIX ASPHALT SURFACE COURSE, IL-9.5, MIX "C", N70	TON	4,380
42400100	PORTLAND CEMENT CONCRETE SIDEWALK 4 INCH	SQ FT	84
42400800	DETECTABLE WARNINGS	SQ FT	16
44000157	HOT-MIX ASPHALT SURFACE REMOVAL, 2"	SQ YD	702
44000600	SIDEWALK REMOVAL	SQ FT	84
44200069	PAVEMENT PATCHING, TYPE III, 6 INCH	SQ YD	36
44200071	PAVEMENT PATCHING, TYPE IV, 6 INCH	SQ YD	223
44300200	STRIP REFLECTIVE CRACK CONTROL TREATMENT	FOOT	254
48102100	AGGREGATE WEDGE SHOULDER, TYPE B	TON	1,020
50105220	PIPE CULVERT REMOVAL	FOOT	114
50800105	REINFORCEMENT BARS	POUND	2,181
50800205	REINFORCEMENT BARS, EPOXY COATED	POUND	179
54002020	EXPANSION BOLTS 3/4 INCH	EACH	28
54003000	CONCRETE BOX CULVERTS	CU YD	10.7
542A2773	PIPE CULVERTS, CLASS A, TYPE 4 48"	FOOT	110
54213693	PRECAST REINFORCED CONCRETE FLARED END SECTIONS 48"	EACH	2
Δ 63100167	TRAFFIC BARRIER TERMINAL, TYPE 1 (SPECIAL) TANGENT	EACH	2
63200310	GUARDRAIL REMOVAL	FOOT	50
67100100	MOBILIZATION	L SUM	1
70300100	SHORT TERM PAVEMENT MARKING	FOOT	1,824
70300220	TEMPORARY PAVEMENT MARKING - LINE 4"	FOOT	59,886
Δ 72501000	TERMINAL MARKER - DIRECT APPLIED	EACH	3
Δ 78000100	THERMOPLASTIC PAVEMENT MARKING - LETTERS AND SYMBOLS	SQ FT	14
Δ 78000500	THERMOPLASTIC PAVEMENT MARKING - LINE 8"	FOOT	102
Δ 78000610	THERMOPLASTIC PAVEMENT MARKING - LINE 16"	FOOT	44
Δ 78000650	THERMOPLASTIC PAVEMENT MARKING - LINE 24"	FOOT	27
Δ 78001110	PAINT PAVEMENT MARKING - LINE 4"	FOOT	61,312
Δ 78100100	RAISED REFLECTIVE PAVEMENT MARKER	EACH	254
Δ 78200005	GUARDRAIL REFLECTORS, TYPE A	EACH	24
78300200	RAISED REFLECTIVE PAVEMENT MARKER REMOVAL	EACH	254

* SEE SPECIAL PROVISIONS

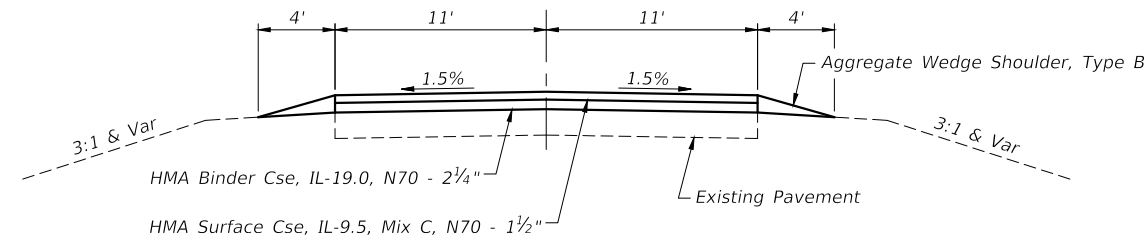
Δ SPECIALTY ITEMS

INDEX OF SHEETS

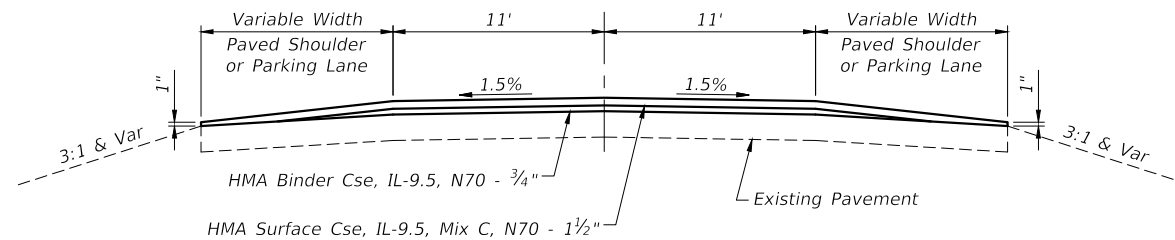
1. COVER SHEET
 2. INDEX OF SHEETS & SUMMARY OF QUANTITIES
 3. TYPICAL SECTIONS
 4. MISCELLANEOUS DETAILS
 - 5.-8. PLAN SHEETS
 9. PLAN DETAILS
 10. BOX CULVERT EXTENSION - 158+70 LT
 11. BOX CULVERT EXTENSION - 158+70 RT
- STANDARDS
- | | |
|-----------|---------------------------------------|
| 000001-07 | STD SYMBOLS, ABBREVIATIONS & PATTERNS |
| 280001-07 | TEMPORARY EROSION CONTROL SYSTEMS |
| 424026-03 | ENTRANCE / ALLEY PEDESTRIAN CROSSING |
| 542301-03 | PRC FLARED END SECTION |
| 630001-12 | STEEL PLATE BEAM GUARDRAIL |
| 635001-02 | DELINEATORS |
| 701001-02 | TRAFFIC CONTROL |
| 701006-05 | TRAFFIC CONTROL |
| 701011-05 | TRAFFIC CONTROL |
| 701201-05 | TRAFFIC CONTROL |
| 701206-05 | TRAFFIC CONTROL |
| 701301-04 | TRAFFIC CONTROL |
| 701306-04 | TRAFFIC CONTROL |
| 701311-03 | TRAFFIC CONTROL |
| 701336-07 | TRAFFIC CONTROL |
| 701501-06 | TRAFFIC CONTROL |
| 701901-08 | TRAFFIC CONTROL DEVICES |
| 725001-01 | OBJECT AND TERMNAL MARKERS |
| 780001-05 | TYPICAL PAVEMENT MARKINGS |
| 781001-04 | RAISED REFLECTIVE PAVEMENT MARKERS |
| 782006-01 | GR & BARR WALL REFLECTOR MNTG DETAILS |
| BLR 21-9 | TYP APPLICATION OF TRAF CONTR DEVICES |
| BLR 24-2 | MAILBOX TURNOUTS FOR LOCAL ROADS |

SUMMARY OF QUANTITIES
& INDEX OF SHEETS
FAS 1931 (GORVILLE ROAD)
SECTION 17-00070-00-R5
PROJECT YVN7(824)
JOHNSON COUNTY

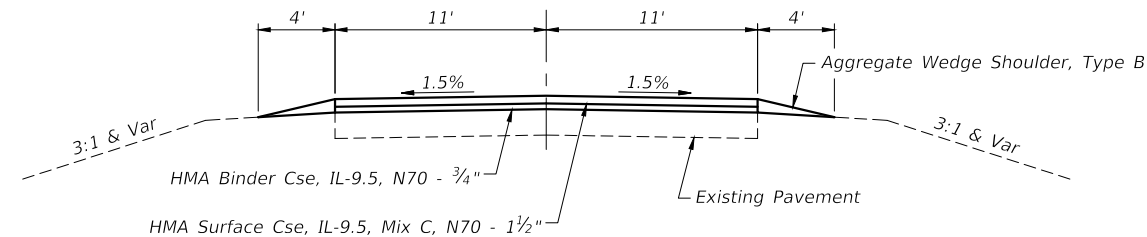
ROUTE	SECTION	COUNTY	TOTAL SHEETS	SHEET NO.
FAS 1931	17-00070-00-RS	JOHNSON	11	3
PROJECT NO. YVN7(824)			CONTRACT NO. 99638	



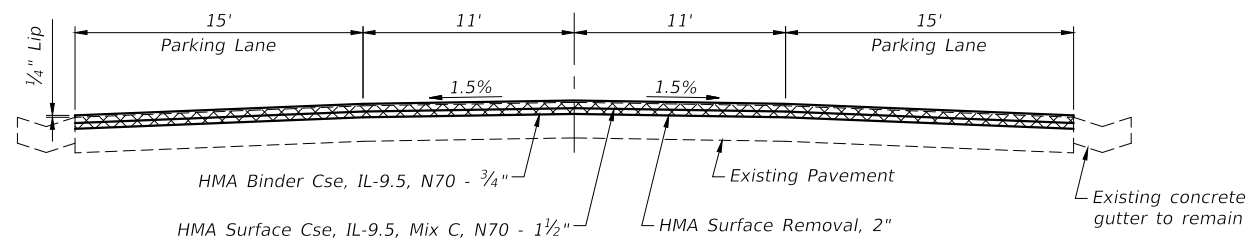
PROPOSED TYPICAL SECTION
STA 978+00 - STA 980+10



PROPOSED TYPICAL SECTION
STA 980+10 - STA 992+92.5
STA 167+80 - STA 169+23



PROPOSED TYPICAL SECTION
STA 0+00 - STA 167+80



PROPOSED TYPICAL SECTION
STA 169+23 - STA 170+44.6

GENERAL NOTES

Any mention of "prime" in these plans shall be construed to mean either Bituminous Materials (Prime Coat) or Bituminous Materials (Tack Coat) in accordance with Section 406 of the Standard Specifications for Road and Bridge Construction.

Bituminous Materials Prime/Tack Coat shall be applied to the full width of the existing surface or aggregate base at the rates shown below.

The location of underground utilities shown on the plans is an approximation and is included for information only.

Factors used for quantity calculations are as follows:

Hot-Mix Asphalt	112.0 Lbs/Sq Yd/Inch
Aggregate/Riprap	2.025 Tons/Cu Yd
Bit Materials (Prime Coat), on Agg Base	0.25 Lbs/Sq Ft
Bit Materials (Tack Coat), on HMA Base	0.05 Lbs/Sq Ft
on HMA Lift	0.025 Lbs/Sq Ft

HOT-MIX ASPHALT MIXTURE REQUIREMENTS

Mixture Use:	HMA Binder Course, IL-19.0, N70
PG:	PG64-22
RAP% (Max):	10
Design Air Voids:	4% @ N _{des} 70
Mixture Composition: (Gradation Mixture)	IL-19.0mm
Friction Aggregate:	None

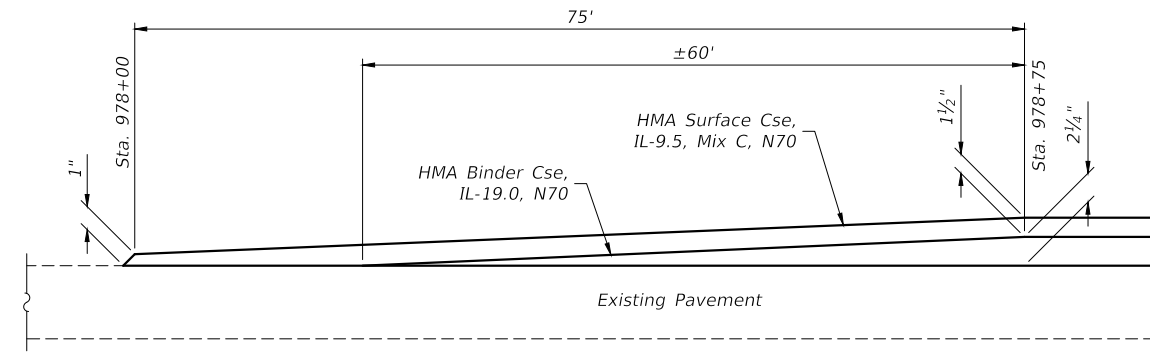
Mixture Use:	HMA Binder Course, IL-9.5, N70
PG:	PG64-22
RAP% (Max):	10
Design Air Voids:	4% @ N _{des} 70
Mixture Composition: (Gradation Mixture)	IL-9.5mm
Friction Aggregate:	None

Mixture Use:	HMA Surface Course, IL-9.5 Mix "C", N70
PG:	PG64-22
RAP% (Max):	10
Design Air Voids:	4% @ N _{des} 70
Mixture Composition: (Gradation Mixture)	IL-9.5mm
Friction Aggregate:	C Surface

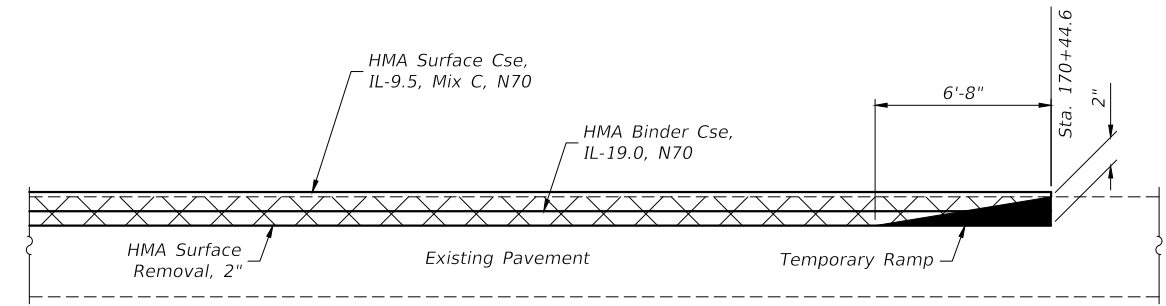
TYPICAL SECTIONS

FAS 1931 (GORVILLE ROAD)
SECTION 17-00070-00-RS
PROJECT YVN7(824)
JOHNSON COUNTY

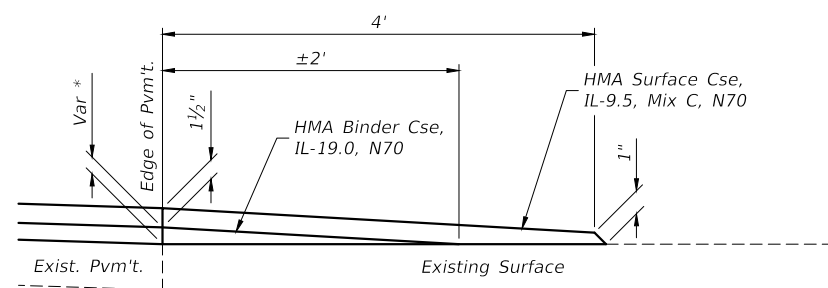
ROUTE	SECTION	COUNTY	TOTAL SHEETS	SHEET NO.
FAS 1931	17-00070-00-RS	JOHNSON	11	4
PROJECT NO. YVN7(824)			CONTRACT NO. 99638	



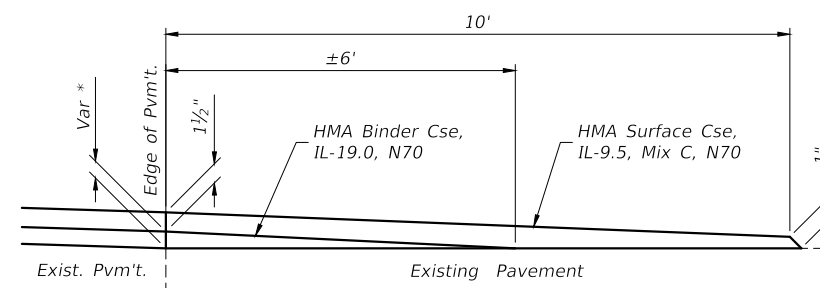
BEGINNING TAPER
(Also use for Wolf Creek Road taper)



ENDING BUTT JOINT

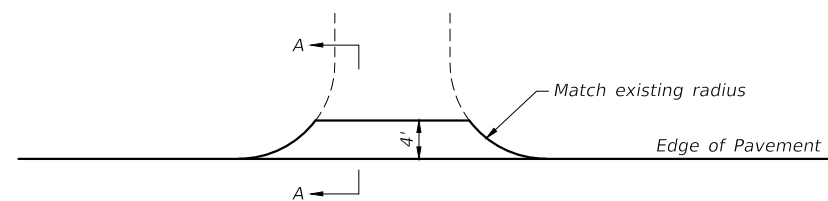


SECTION A-A PRIVATE ENTRANCE (Est. No. = 55)

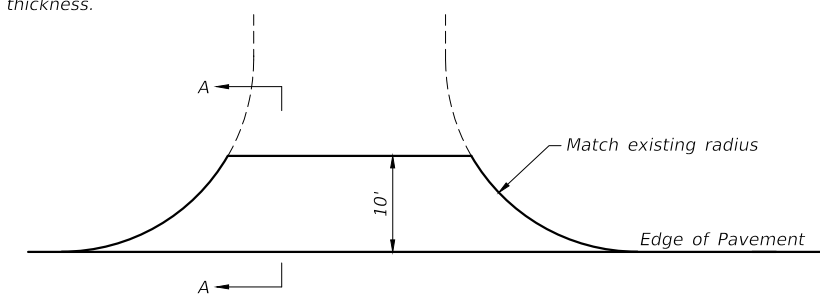


SECTION A-A SIDE ROAD (Est. No. = 15)

* Match roadway binder thickness.



TYPICAL ENTRANCE DETAILS

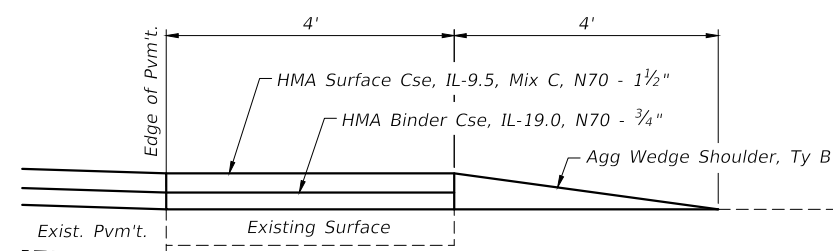


TYPICAL SIDE ROAD DETAILS

SCHEDULE OF PAVEMENT MARKING LINE 4" (LIN. FT.)			
Location	Centerline (Yellow Dashed)	Edge Line (White Solid)	No Passing (Yellow Solid)
Goreville Road	2,800	35,536	22,694
Wolf Creek Road	20	262	--
TOTALS	2,820	35,798	22,694

See Standard 780001 for typical pavement markings.

SCHEDULE OF "NO PASSING ZONES"			
WESTBOUND (LEFT) LANE		EASTBOUND (RIGHT) LANE	
Location	Length	Location	Length
Sta. 978+00 to Sta. 16+80	3,173'	Sta. 978+00 to Sta. 8+25	2,318'
Sta. 24+00 to Sta. 37+65	1,365'	Sta. 15+40 to Sta. 26+70	1,130'
Sta. 69+15 to Sta. 95+60	2,645'	Sta. 60+45 to Sta. 84+35	2,390'
Sta. 115+80 to Sta. 132+10	1,630'	Sta. 104+55 to Sta. 121+00	1,645'
Sta. 144+65 to Sta. 170+44	2,579'	Sta. 132+25 to Sta. 170+44	3,819'
TOTALS	11,392'		11,302'

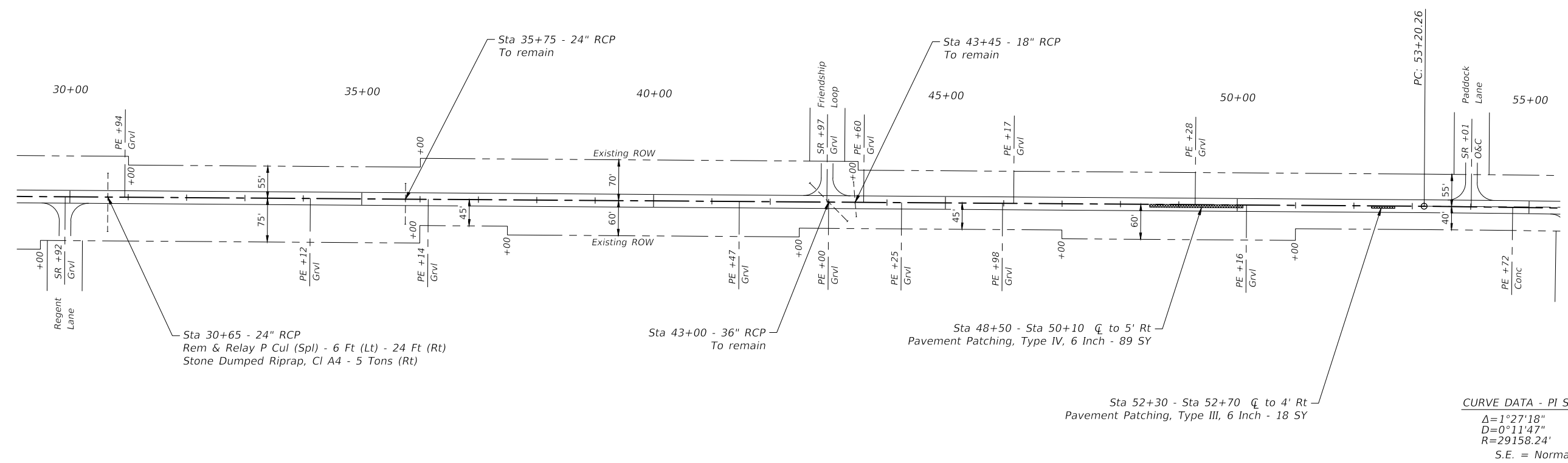


TYPICAL MAILBOX TURNOUT
(See Standard BLR 24 for more details)

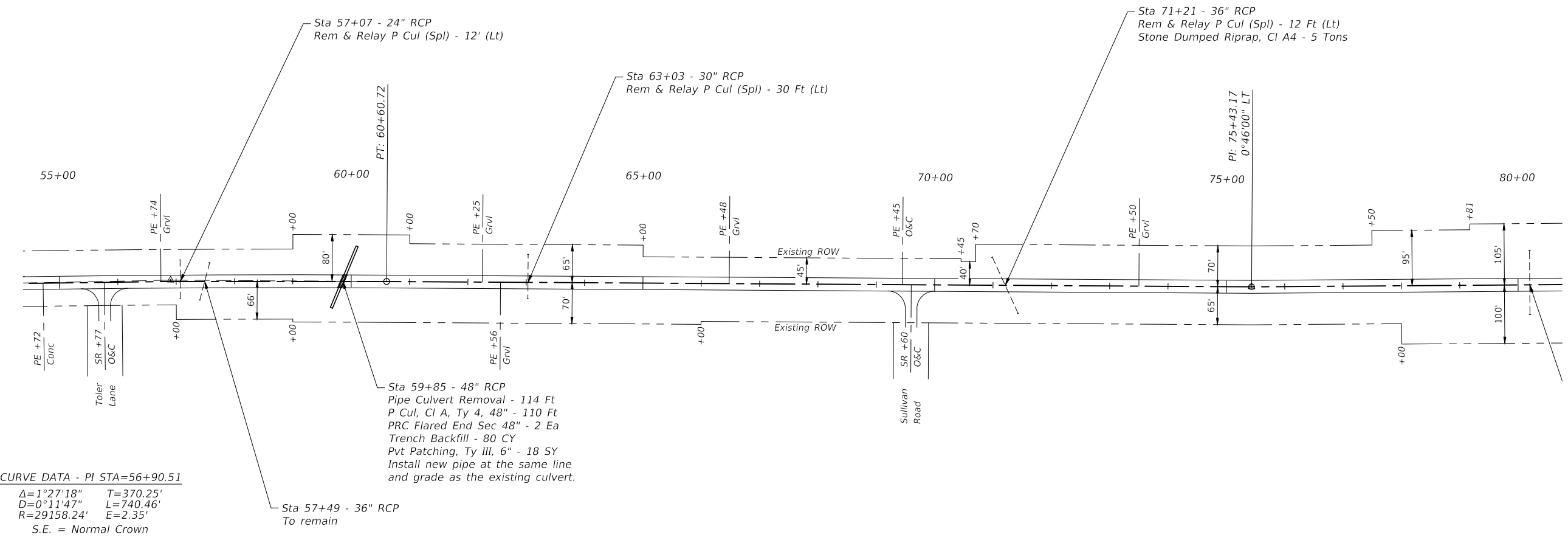
MISCELLANEOUS DETAILS

FAS 1931 (GORVILLE ROAD)
SECTION 17-00070-00-RS
PROJECT YVN7(824)
JOHNSON COUNTY

ROUTE	SECTION	COUNTY	TOTAL SHEETS	SHEET NO.
FAS 1931	17-00070-00-RS	JOHNSON	11	6
PROJECT NO. YVN7(824)			CONTRACT NO. 99638	

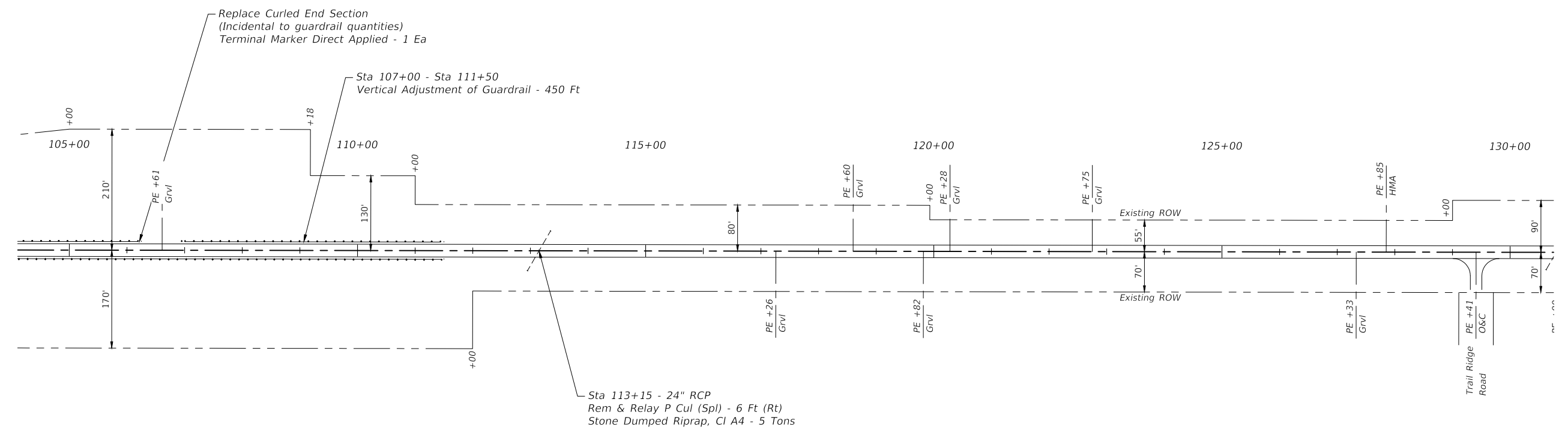
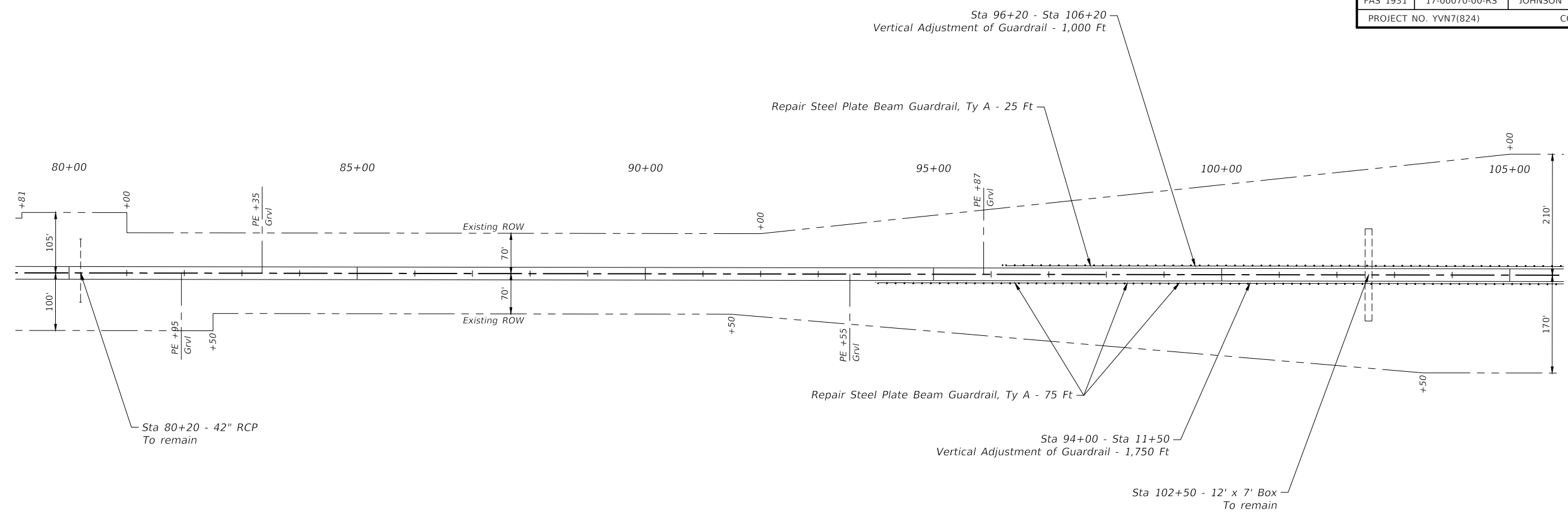


CURVE DATA - PI STA=56+90.51
 $\Delta=1^{\circ}27'18''$ $T=370.25'$
 $D=0^{\circ}11'47''$ $L=740.46'$
 $R=29158.24'$ $E=2.35'$
S.E. = Normal Crown

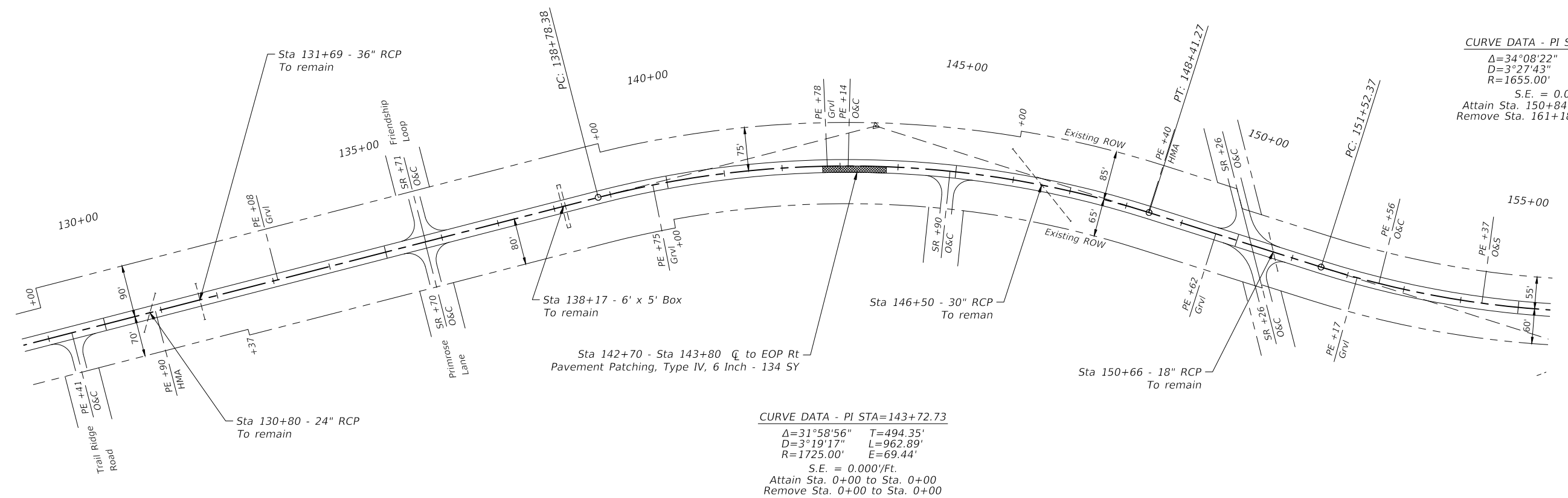


CURVE DATA - PI STA=56+90.51
 $\Delta=1^{\circ}27'18''$ $T=370.25'$
 $D=0^{\circ}11'47''$ $L=740.46'$
 $R=29158.24'$ $E=2.35'$
S.E. = Normal Crown

ROUTE	SECTION	COUNTY	TOTAL SHEETS	SHEET NO.
FAS 1931	17-00070-00-RS	JOHNSON	11	7
PROJECT NO. YVN7(824)			CONTRACT NO. 99638	



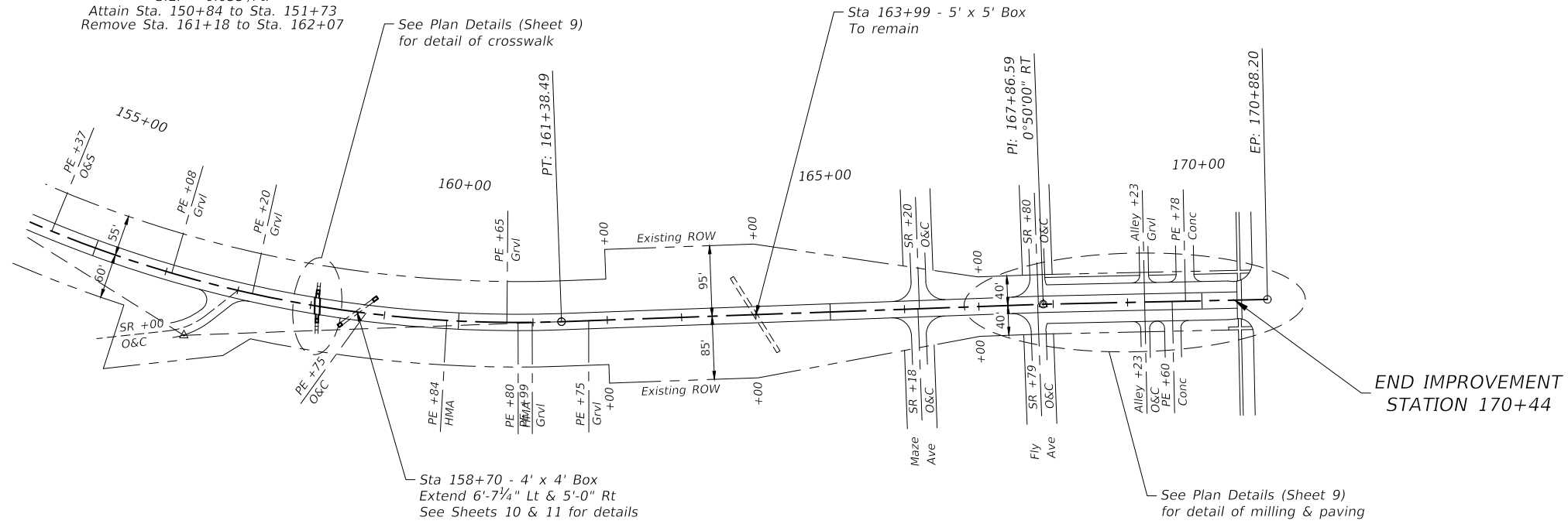
ROUTE	SECTION	COUNTY	TOTAL SHEETS	SHEET NO.
FAS 1931	17-00070-00-RS	JOHNSON	11	8
PROJECT NO. YVN7(824)			CONTRACT NO. 99638	



CURVE DATA - PI STA=156+60.56
 $\Delta=34^{\circ}08'22''$ $T=508.19'$
 $D=3^{\circ}27'43''$ $L=986.12'$
 $R=1655.00'$ $E=76.27'$
 $S.E. = 0.035'/Ft.$
 Attain Sta. 150+84 to Sta. 151+73
 Remove Sta. 161+18 to Sta. 162+07

CURVE DATA - PI STA=143+72.73
 $\Delta=31^{\circ}58'56''$ $T=494.35'$
 $D=3^{\circ}19'17''$ $L=962.89'$
 $R=1725.00'$ $E=69.44'$
 $S.E. = 0.000'/Ft.$
 Attain Sta. 0+00 to Sta. 0+00
 Remove Sta. 0+00 to Sta. 0+00

CURVE DATA - PI STA=156+60.56
 $\Delta=34^{\circ}08'22''$ $T=508.19'$
 $D=3^{\circ}27'43''$ $L=986.12'$
 $R=1655.00'$ $E=76.27'$
 $S.E. = 0.035'/Ft.$
 Attain Sta. 150+84 to Sta. 151+73
 Remove Sta. 161+18 to Sta. 162+07



See Plan Details (Sheet 9) for detail of crosswalk

Sta 158+70 - 4' x 4' Box
 Extend 6'-7/4" Lt & 5'-0" Rt
 See Sheets 10 & 11 for details

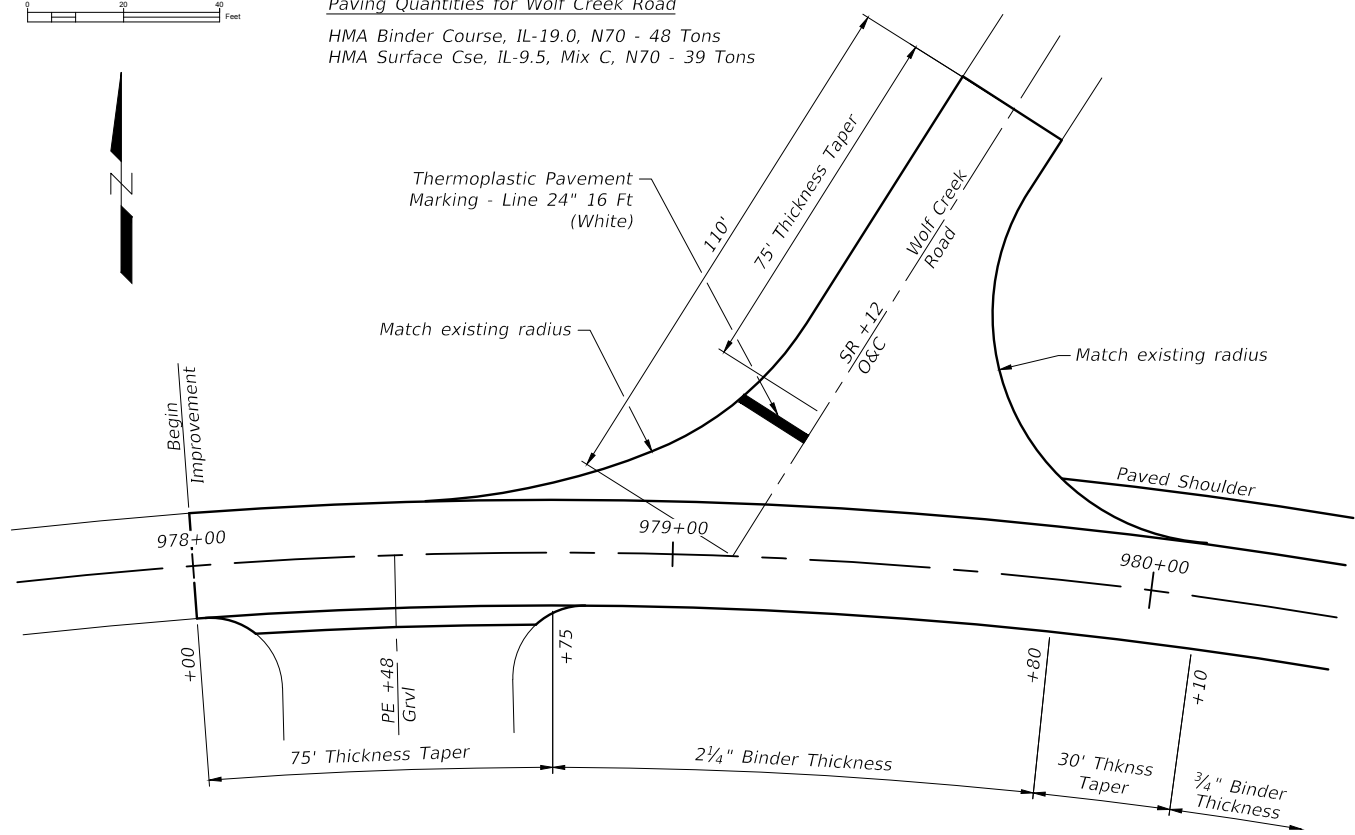
See Plan Details (Sheet 9) for detail of milling & paving

END IMPROVEMENT STATION 170+44

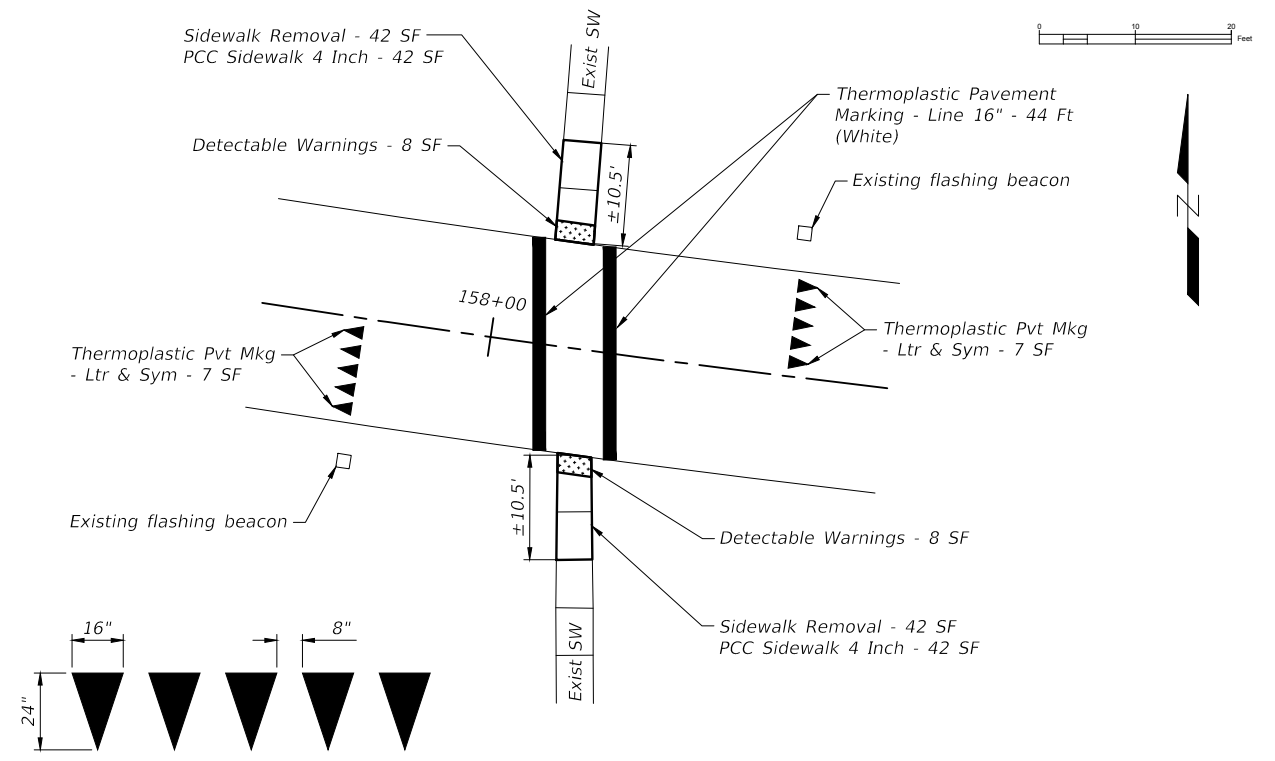
ROUTE	SECTION	COUNTY	TOTAL SHEETS	SHEET NO.
FAS 1931	17-00070-00-RS	JOHNSON	11	9
PROJECT NO. YVN7(824)			CONTRACT NO. 99638	



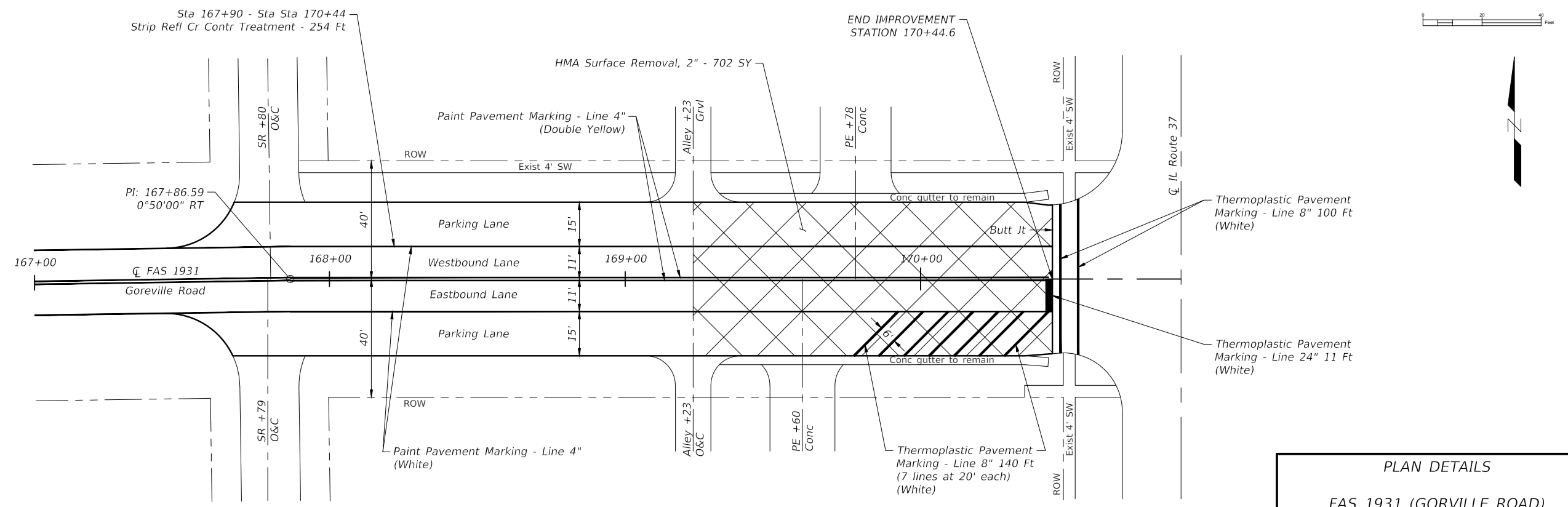
Paving Quantities for Wolf Creek Road
 HMA Binder Course, IL-19.0, N70 - 48 Tons
 HMA Surface Cse, IL-9.5, Mix C, N70 - 39 Tons



WOLF CREEK ROAD DETAILS - BOP



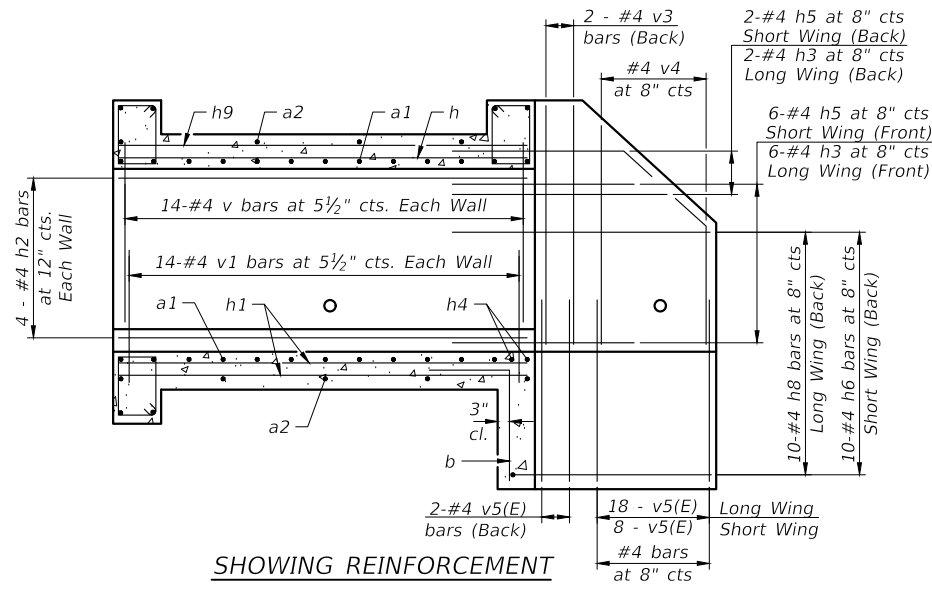
CROSSWALK DETAILS - STATION 158+09



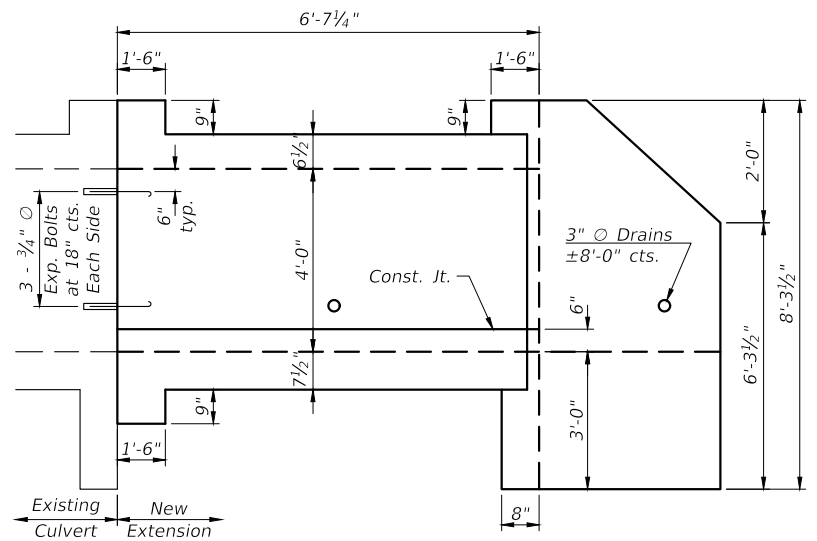
MILLING & STRIPING DETAILS - EOP

PLAN DETAILS
 FAS 1931 (GORVILLE ROAD)
 SECTION 17-00070-00-RS
 PROJECT YVN7(824)
 JOHNSON COUNTY

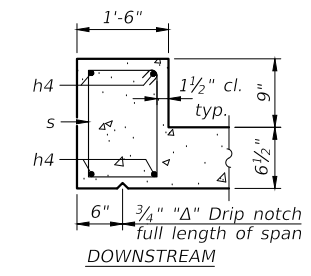
ROUTE	SECTION	COUNTY	TOTAL SHEETS	SHEET NO.
FAS 1931	17-00070-00-RS	JOHNSON	11	10
PROJECT NO. YVN7(824)			CONTRACT NO. 99638	



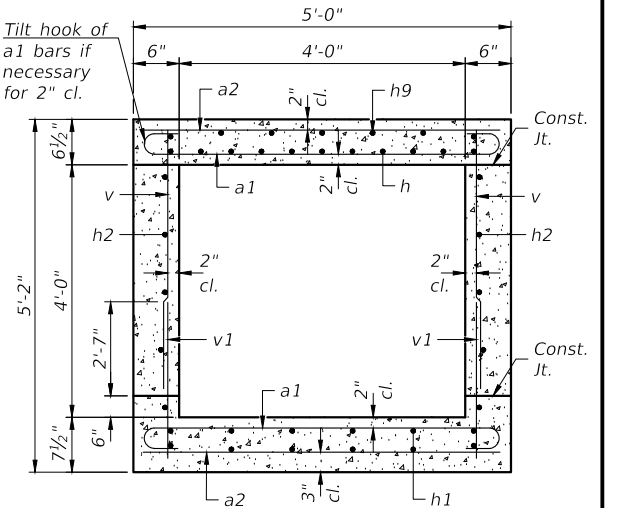
SHOWING REINFORCEMENT



SHOWING OUTLINE

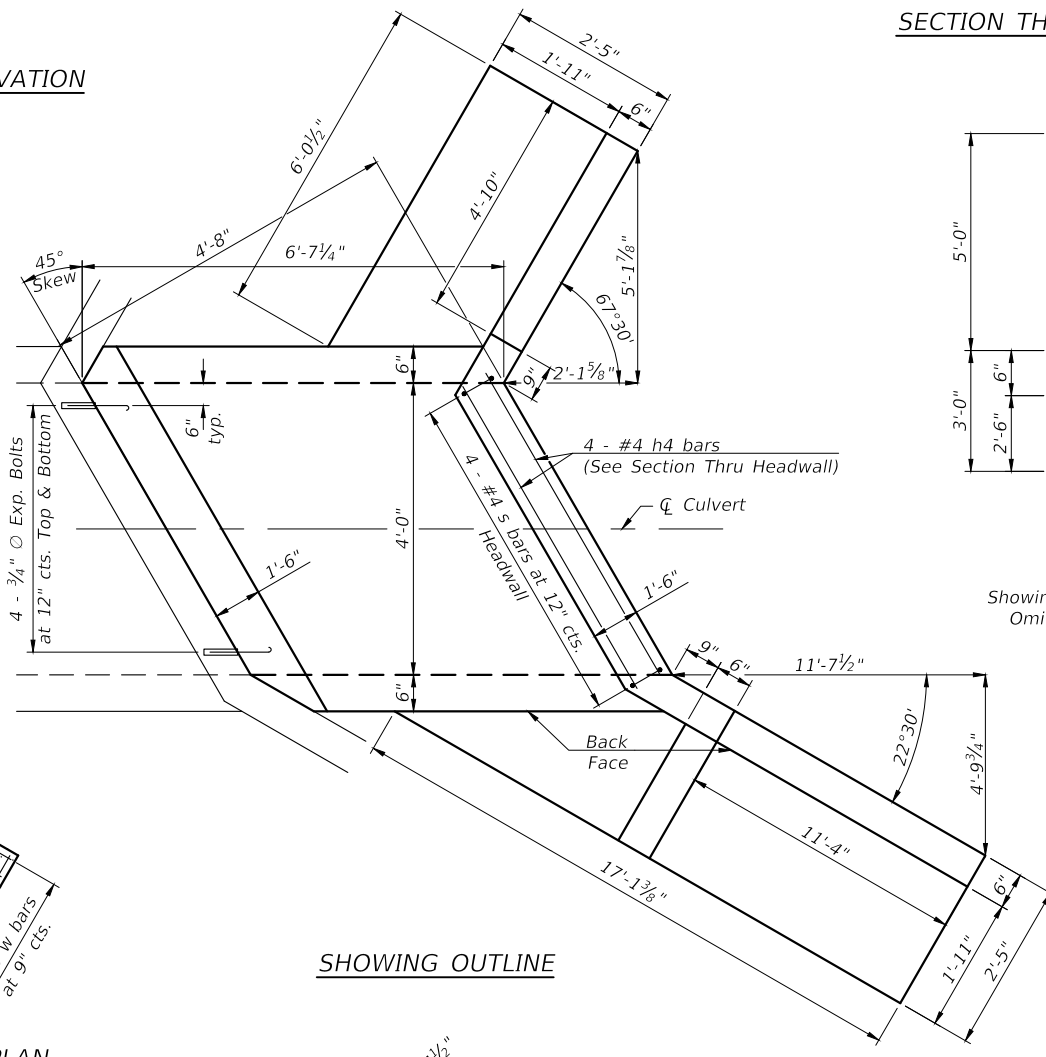


SECTION THRU HEADWALL

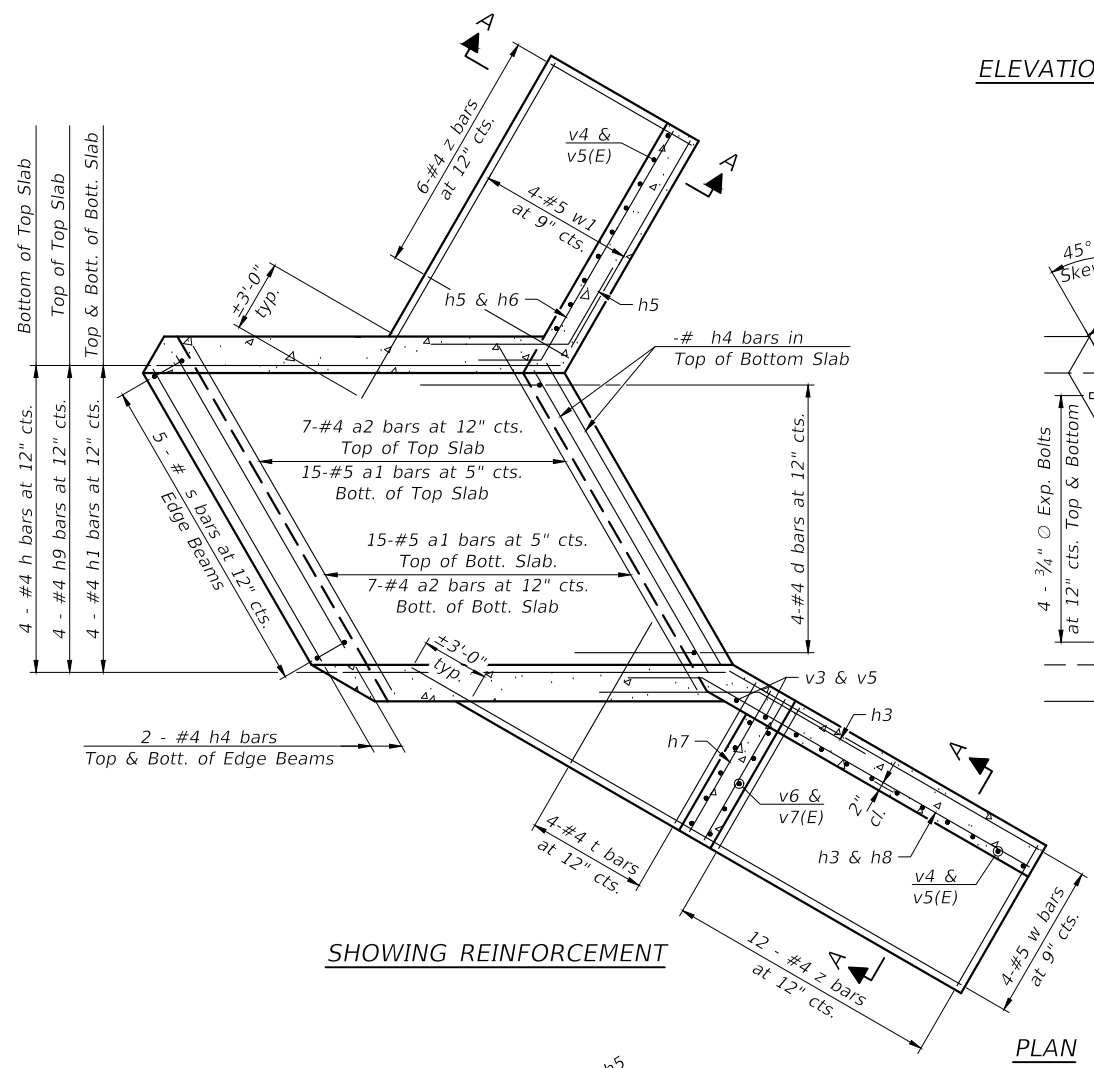


SECTION THRU BARREL

ELEVATION

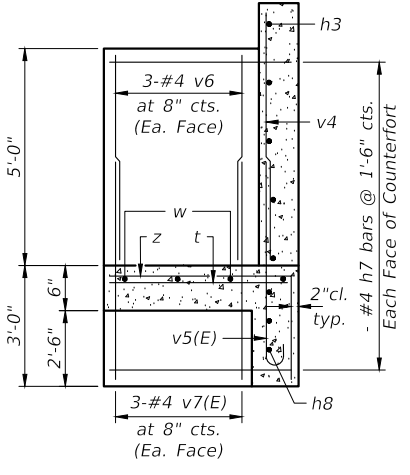


SHOWING OUTLINE



SHOWING REINFORCEMENT

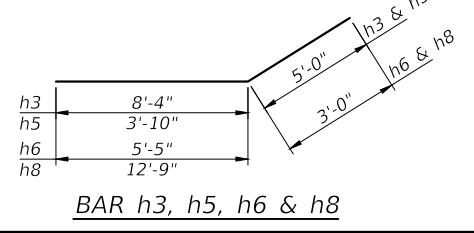
PLAN



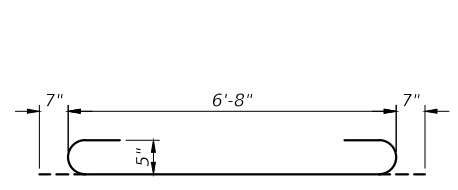
SECTION A-A
Showing long wing with counterfort.
Omit counterfort at short wing.

BILL OF MATERIAL

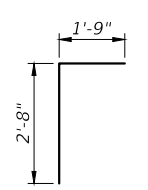
Bar	No.	Size	Length	Shape
a1	30	#5	7'-10"	C
a2	14	#4	6'-8"	—
d	4	#4	4'-5"	L
h	4	#4	6'-3"	—
h1	8	#4	6'-3"	—
h2	8	#4	6'-3"	—
h3	8	#4	13'-4"	—
h4	14	#4	6'-8"	—
h5	8	#4	8'-10"	—
h6	10	#4	8'-5"	—
h7	12	#4	2'-1"	—
h8	10	#4	15'-9"	—
h9	4	#4	6'-3"	—
s	14	#4	5'-3"	C
t	4	#4	2'-1"	—
v	28	#4	3'-8"	—
v1	28	#4	3'-6"	—
v3	4	#4	4'-9"	—
v4	26	#4	5'-0"	—
v5(E)	30	#4	4'-10"	C
v6	6	#4	4'-8"	—
v7(E)	6	#4	5'-11"	—
w	4	#5	19'-6"	—
w1	4	#5	8'-6"	—
z	18	#4	4'-9"	L
Concrete Box Culverts			Cu. Yd.	6.7
Reinforcement Bars			Pound	1,259
Reinforcement Bars, Epoxy Coated			Pound	121
Expansion Bolts			Each	14



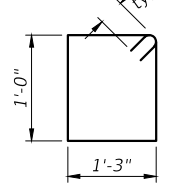
BAR h3, h5, h6 & h8



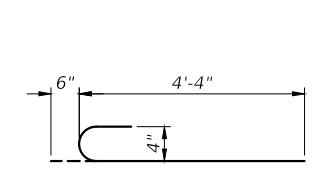
BAR a1



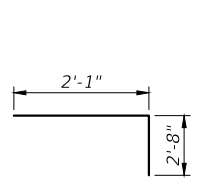
BAR d



BAR s



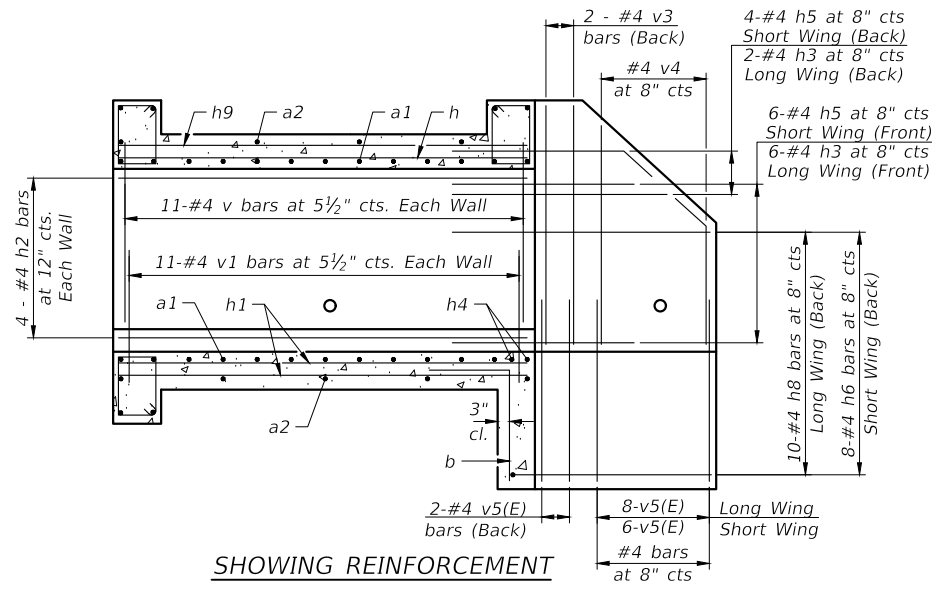
BAR v5(E)



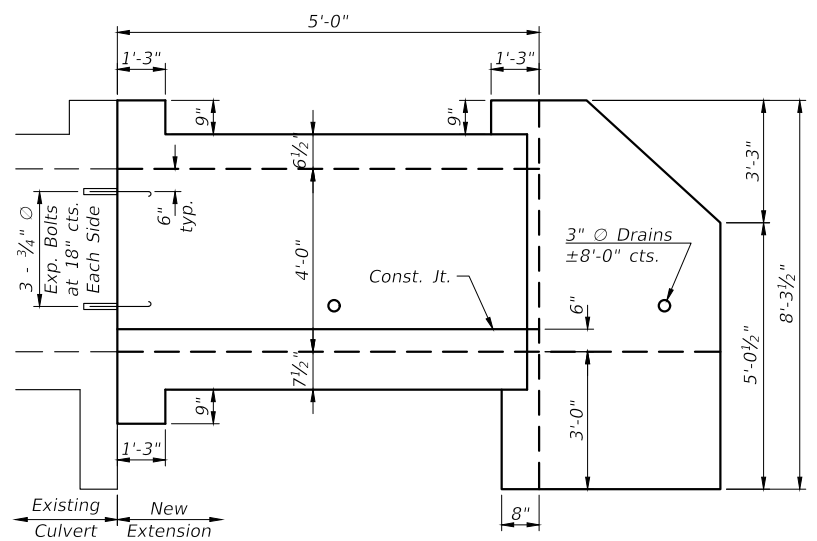
BAR z

BOX CULVERT EXTENSION
STATION 158+70 LEFT
FAS 1931 (GORVILLE ROAD)
SECTION 17-00070-00-RS
PROJECT YVN7(824)
JOHNSON COUNTY

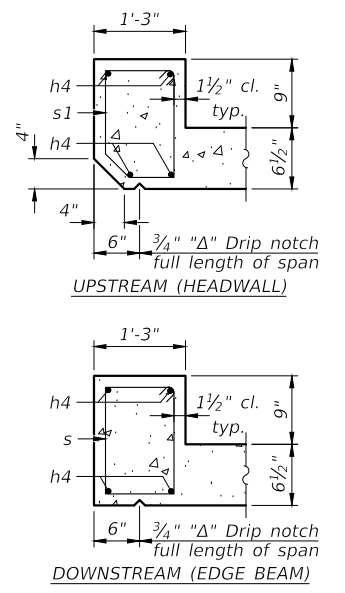
ROUTE	SECTION	COUNTY	TOTAL SHEETS	SHEET NO.
FAS 1931	17-00070-00-RS	JOHNSON	11	11
PROJECT NO. YVN7(824)			CONTRACT NO. 99638	



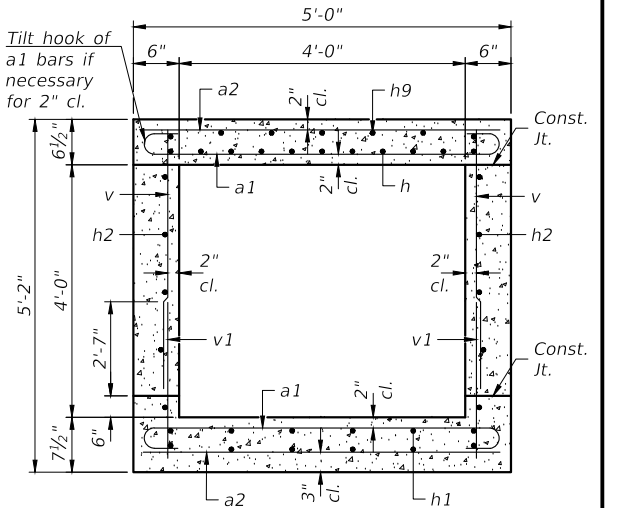
SHOWING REINFORCEMENT



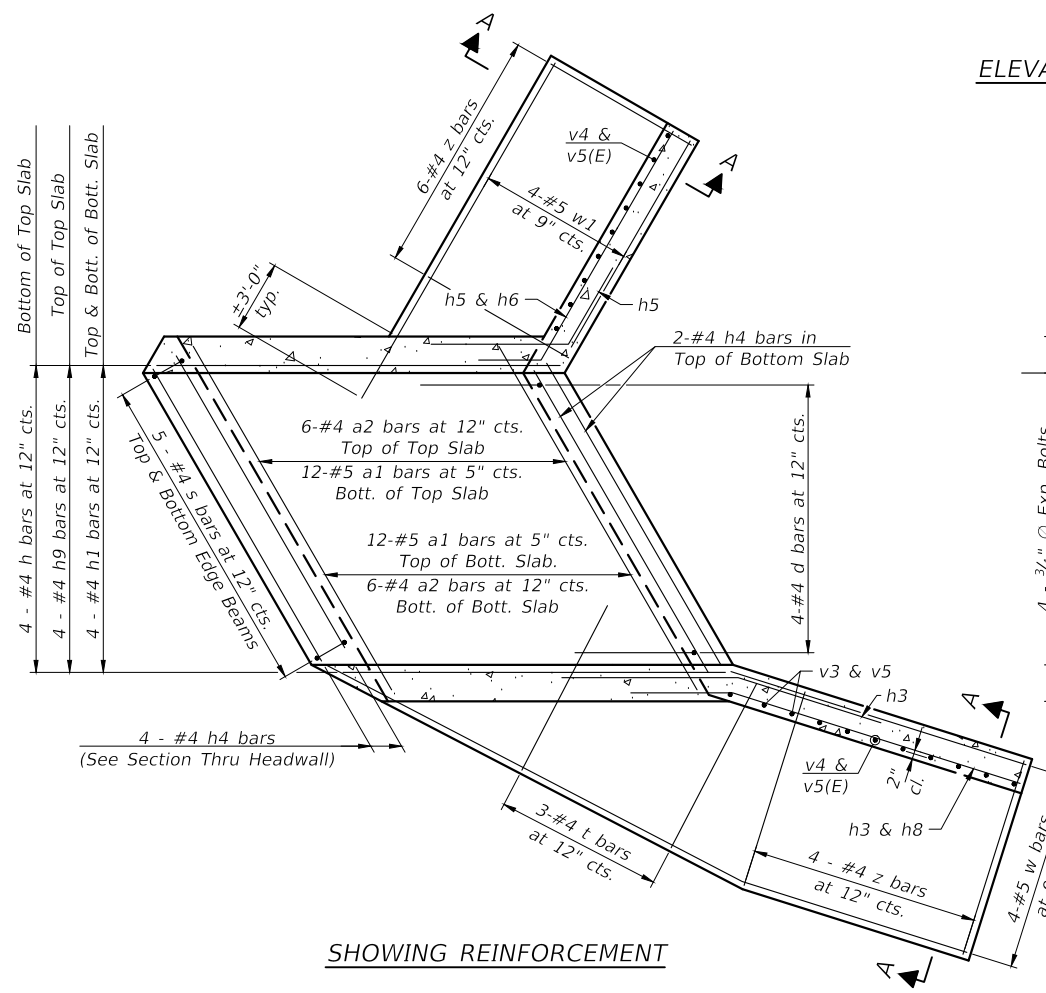
SHOWING OUTLINE



SECTION THRU HEADWALL

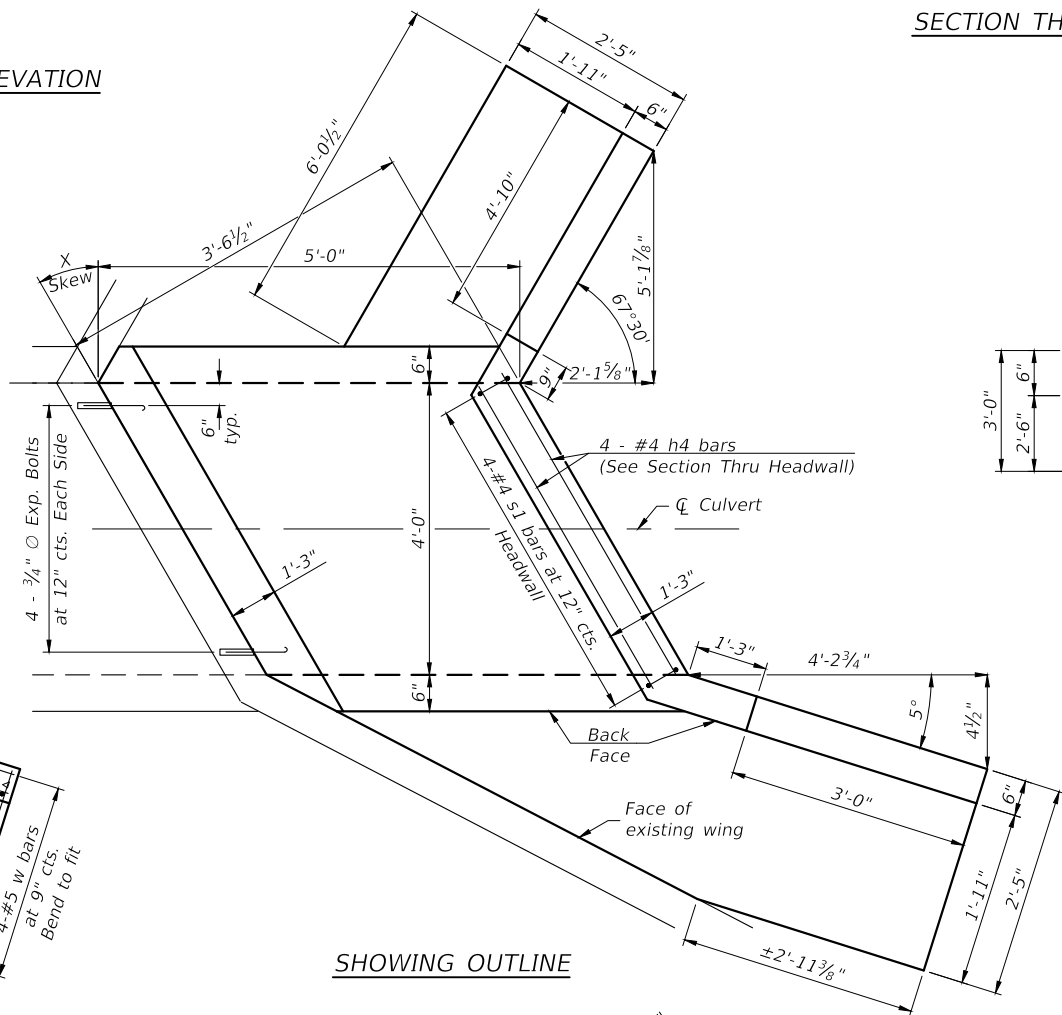


SECTION THRU BARREL

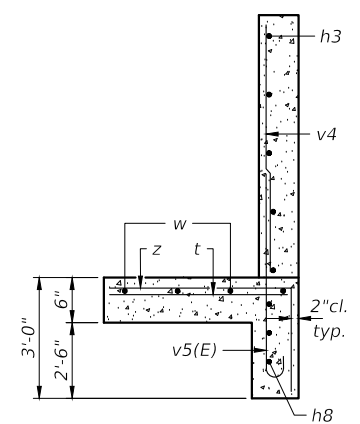


SHOWING REINFORCEMENT

ELEVATION



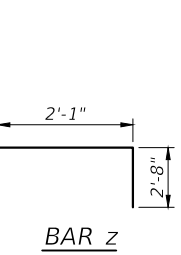
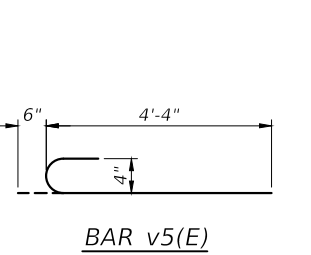
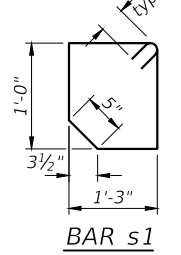
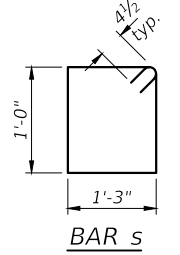
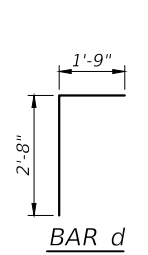
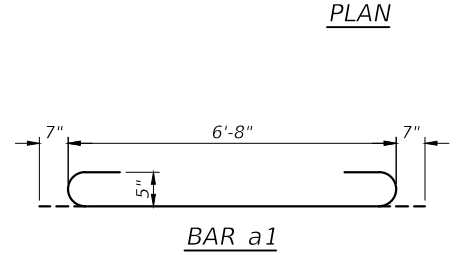
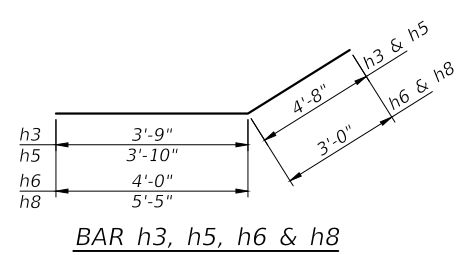
SHOWING OUTLINE



SECTION A-A

BILL OF MATERIAL

Bar	No.	Size	Length	Shape
a1	24	#5	7'-10"	C
a2	12	#4	6'-8"	—
d	4	#4	4'-5"	L
h	4	#4	4'-8"	—
h1	8	#4	4'-8"	—
h2	8	#4	4'-8"	—
h3	8	#4	8'-5"	—
h4	14	#4	6'-8"	—
h5	10	#4	8'-6"	—
h6	8	#4	7'-0"	—
h8	10	#4	8'-5"	—
h9	4	#4	4'-8"	—
s	10	#4	5'-3"	C
s1	4	#4	5'-1"	C
t	3	#4	1'-7"	—
v	22	#4	3'-8"	—
v1	22	#4	3'-6"	—
v3	4	#4	4'-9"	—
v4	14	#4	5'-0"	—
v5(E)	18	#4	4'-10"	C
w	4	#5	10'-7"	—
w1	4	#5	8'-6"	—
z	10	#4	4'-9"	L
Concrete Box Culverts	Cu. Yd.	4.0		
Reinforcement Bars	Pound	922		
Reinforcement Bars, Epoxy Coated	Pound	58		
Expansion Bolts	Each	14		



BOX CULVERT EXTENSION
STATION 158+70 RIGHT
FAS 1931 (GORVILLE ROAD)
SECTION 17-00070-00-RS
PROJECT YVN7(824)
JOHNSON COUNTY